

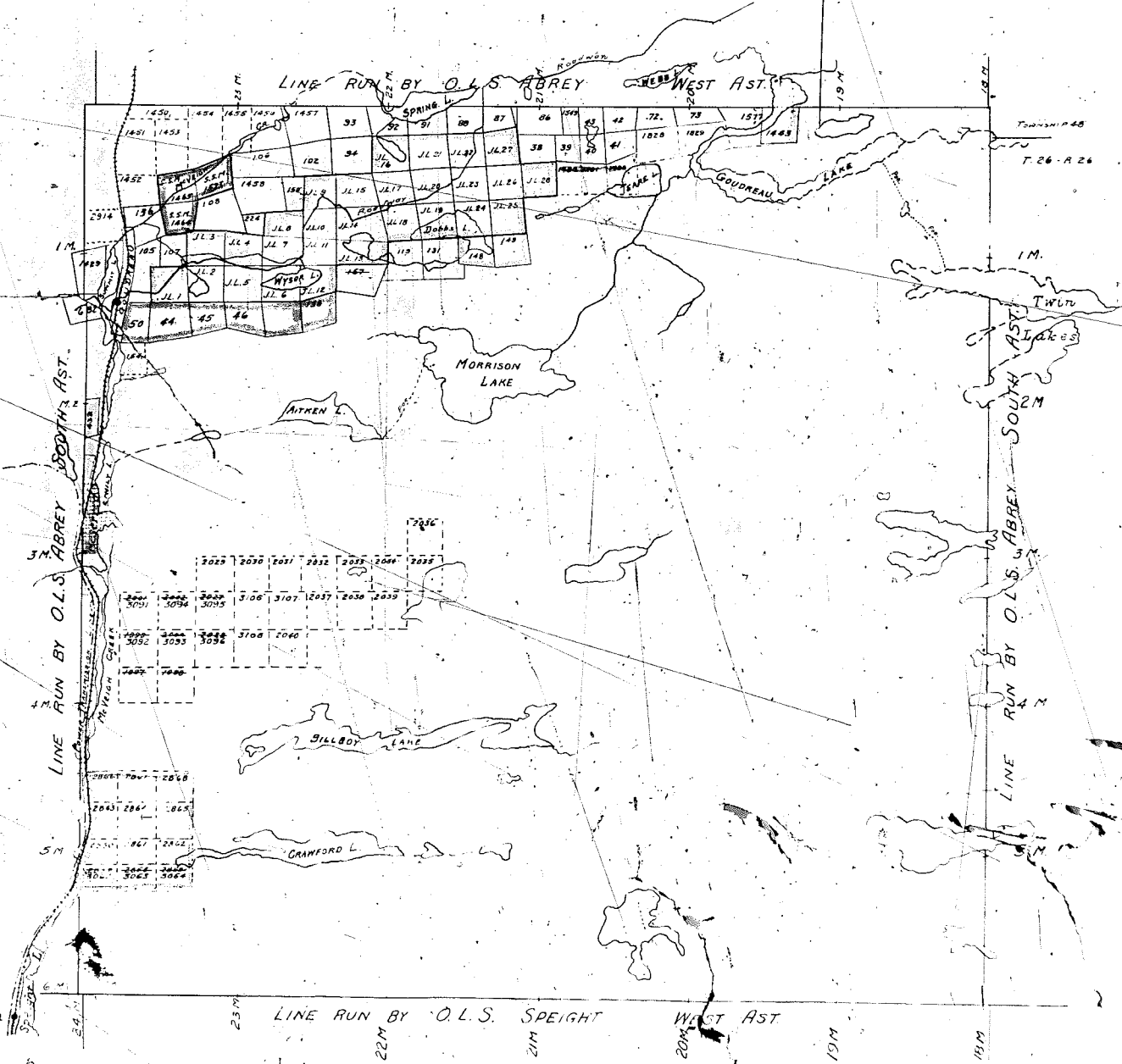
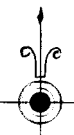
**Terms of Use:** NOTICE: This is a dated, archived document that does not represent current mining claim activity in Ontario. This archived document is provided for information purposes only and MNDM and the Government of Ontario accept no liability and make no warranty or any representation regarding the use, accuracy, applicability, completeness, performance, availability, security or reliability of the information. \*This archive "Historical Claim Map" does not meet provincial accessibility standards. If you need accessible formats, communication support or would like information about this map please contact the Provincial Recording Office @ 1-888-415-9845 Ext 5784. For current mining claim status, please use the MNDM online claim maps website at: <http://www.mndm.gov.on.ca/en/mines-and-minerals/applications/claimaps>

# Tp. 27 Range XXVI.

## ALCOMA

Scale 40 chs = 1 inch

A.C. and H.B. R<sup>Y</sup>  
Sault Ste Marie, Ontario.



1526

AMB 31 1850

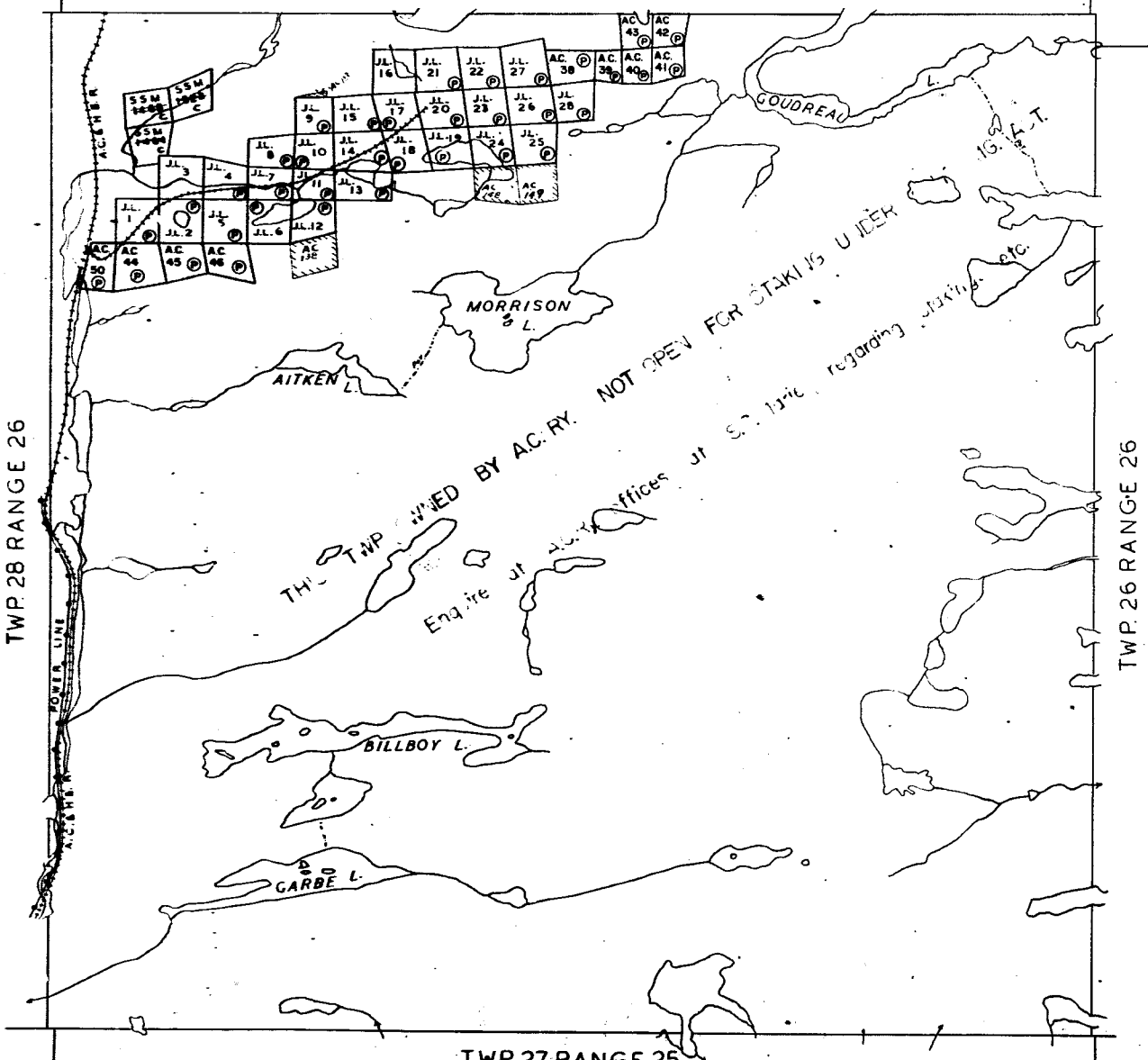
# TWP. 27 RANGE 26 (AGUDONIE TWP.)

SAULT STE. MARIE MINING DIVISION  
DISTRICT OF ALGOMA

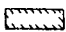
M. 1526

Scale 40 Chains 1 Inch

TWP. 49



THIS TWP. ALGOMA CENTRAL & HUDSON BAY RY. LAND GRANT.

Land shown thus may be staked under the Ontario Mining Act. 

OFFICE MAP

# TWP. 27 RANGE 26 (AGUONIE TWP.)

M. 1526

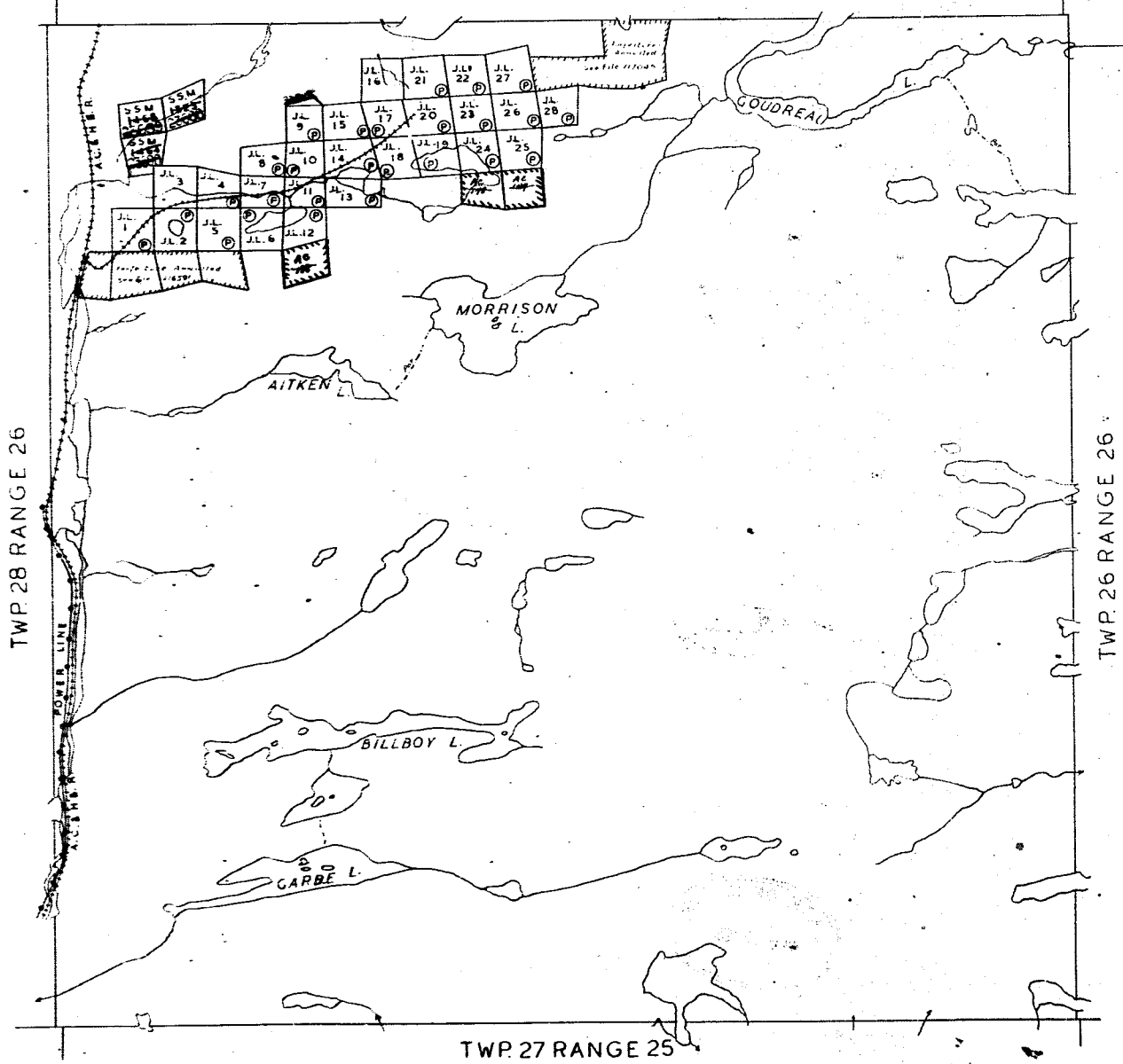
SAULT STE. MARIE MINING DIVISION  
DISTRICT OF ALGOMA

Scale 40 Chains 1 Inch

*A. C. R. Twp*

TWP. 49

*with exception see 23088590 and*



TWP. 28 RANGE 26

TWP. 26 RANGE 26

TWP. 27 RANGE 25

THIS TWP. ALGOMA CENTRAL & HUDSON BAY  
RY. LAND GRANT.

*Labels shown this may be stated upon the District Mining Act*

G.S.

G.2724

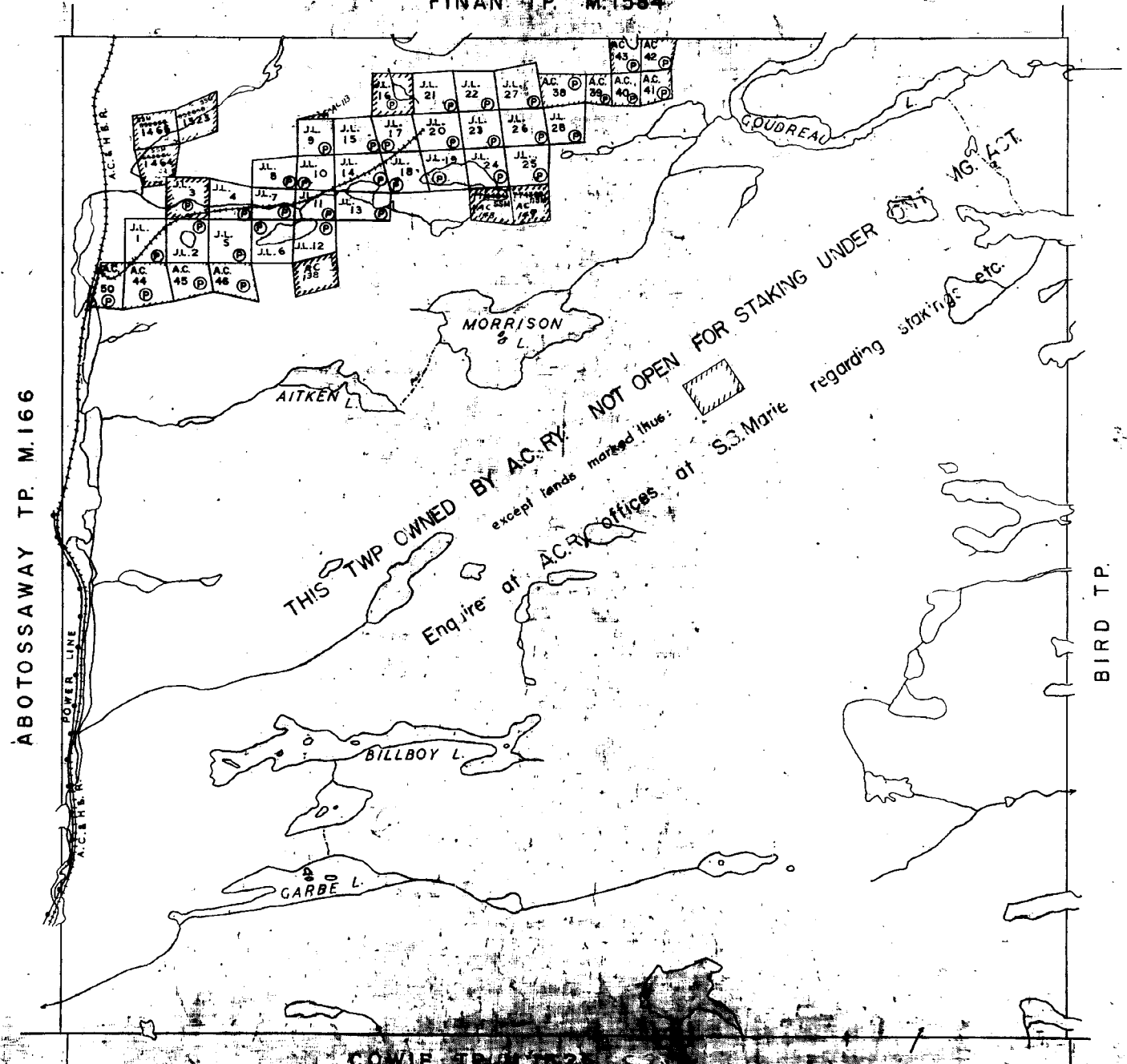
SAULT STE MARIE MINING DIVISION  
DISTRICT OF ALGOMA

Scale 40 Chains to an Inch

400' SURFACE RIGHTS RESERVATION  
AROUND ALL LAKES & RIVERS.

S. S. MARIE  
MINING DIV.  
**RECEIVED**  
MAR 25 1965  
7:8 9:10:11:12:1:2:3:4:5:6

FINAN TP. M. 1584



ABOTOSSAWAY TP. M. 166

BIRD TP.

COWIE TP. M. 1582

THIS TWP ALGOMA CENTRAL HUDSON BAY  
RY. LAND GRANT

G. 2724  
M. 1526

ONTARIO

MINISTRY OF NATURAL RESOURCES  
SURVEYS AND MAPPING BRANCH

# AGUONIE TP.

(Tp. 27, R. 26)

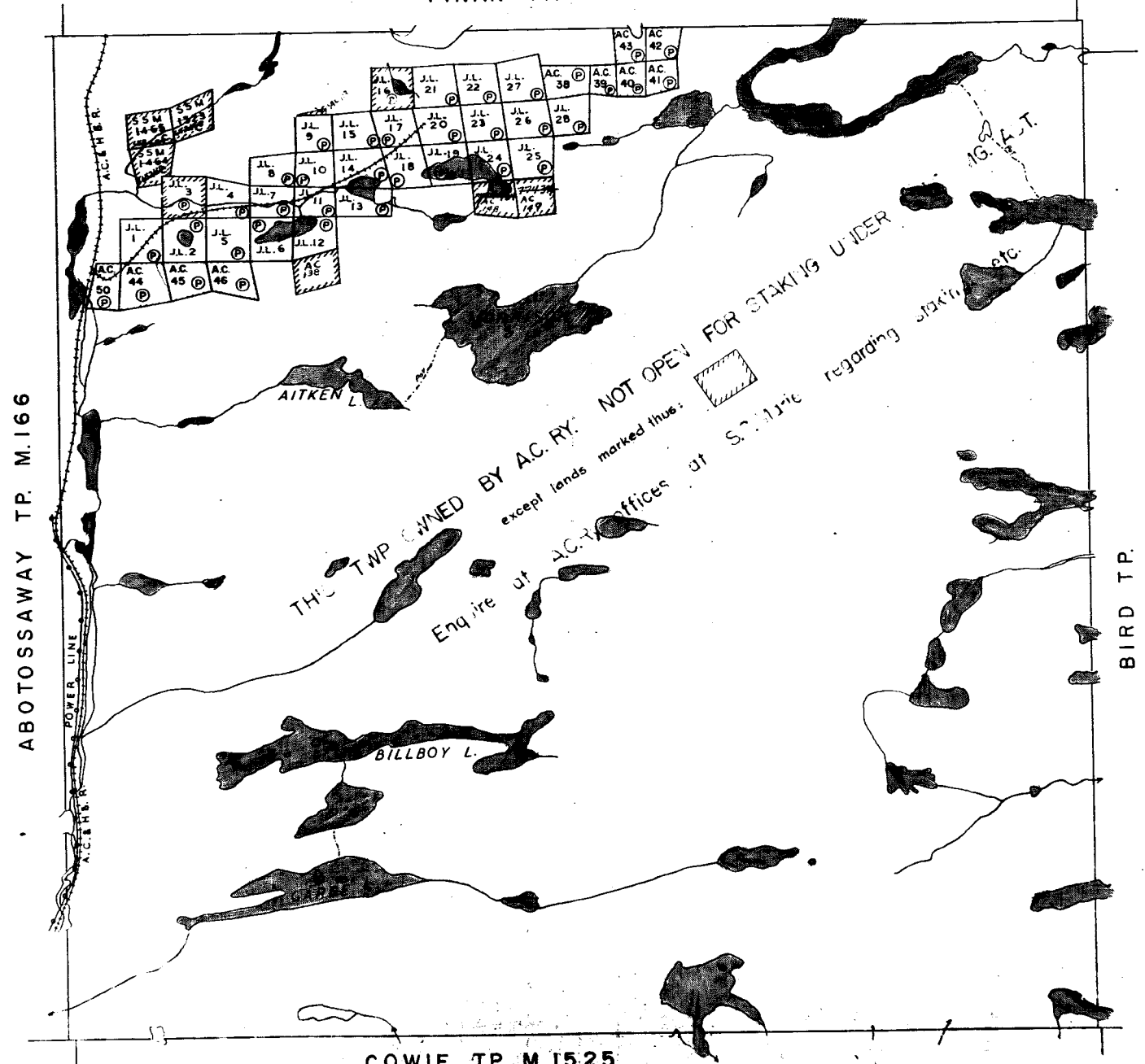
SAULT STE. MARIE MINING DIVISION  
DISTRICT OF ALGOMA

Scale 40 Chains 1 Inch

400' SURFACE RIGHTS RESERVATION  
AROUND ALL LAKES & RIVERS.

DATE OF ISSUE  
MAR 18 1975

FINAN TP. M. 1584



COWIE TP. M. 1525

THIS TWP ALGOMA CENTRAL & HUDSON BAY  
BY LAND GRANT.

*Revised by mlyler 30/6/84*

1526

OFFICE MAP

# TWP. 27 RANGE 26 (AGUONIE TWP.)

SAULT STE. MARIE MINING DIVISION  
DISTRICT OF ALGOMA

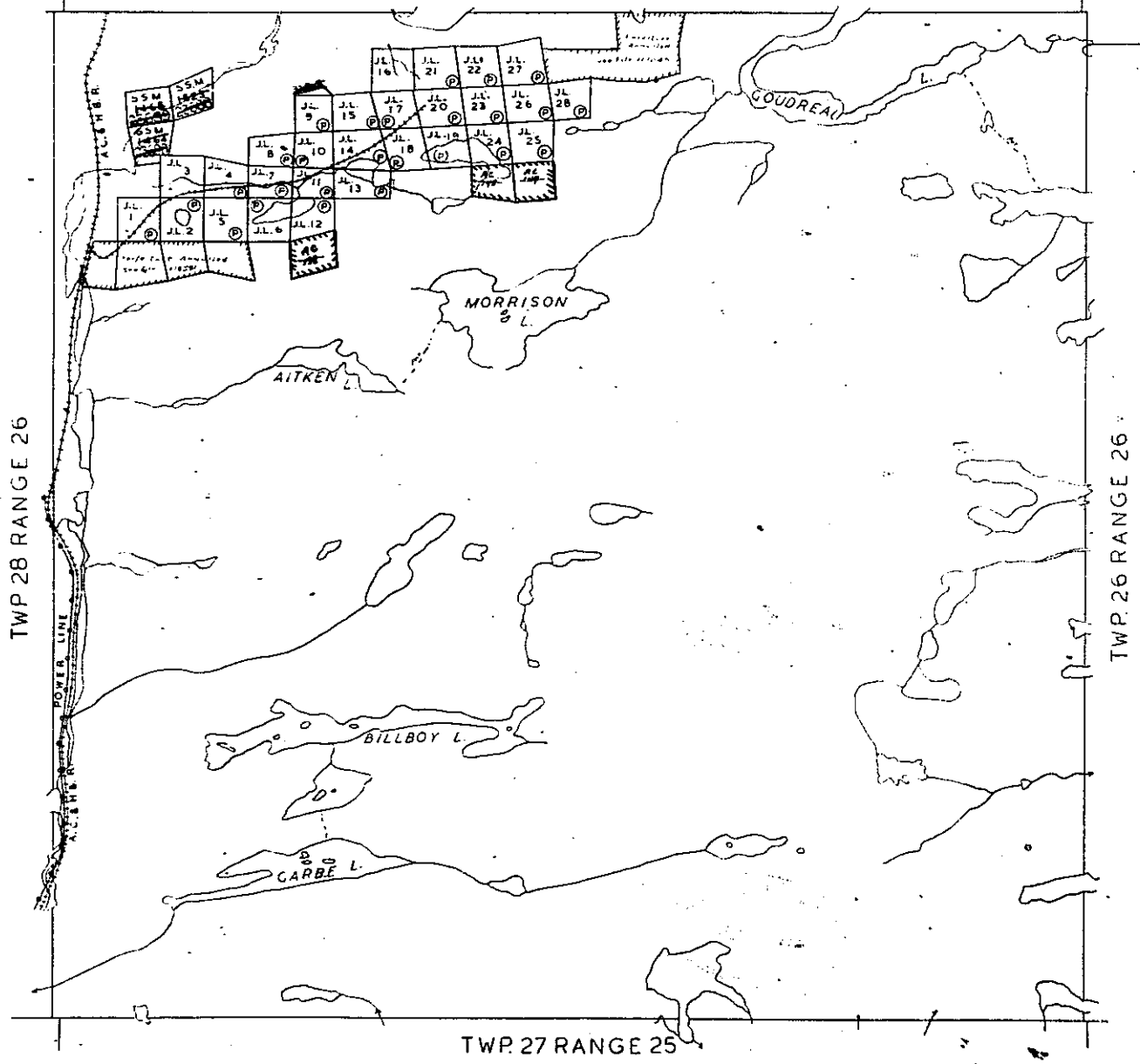
M. 1526

Scale 40 Chains 1 Inch

*A.C.R. Twp*

TWP. 49

*cont. exception see 23018590 and*



THIS TWP. ALGOMA CENTRAL & HUDSON BAY  
RY. LAND GRANT.

*Lands shown may be stated upon the Ontario Mining Act*



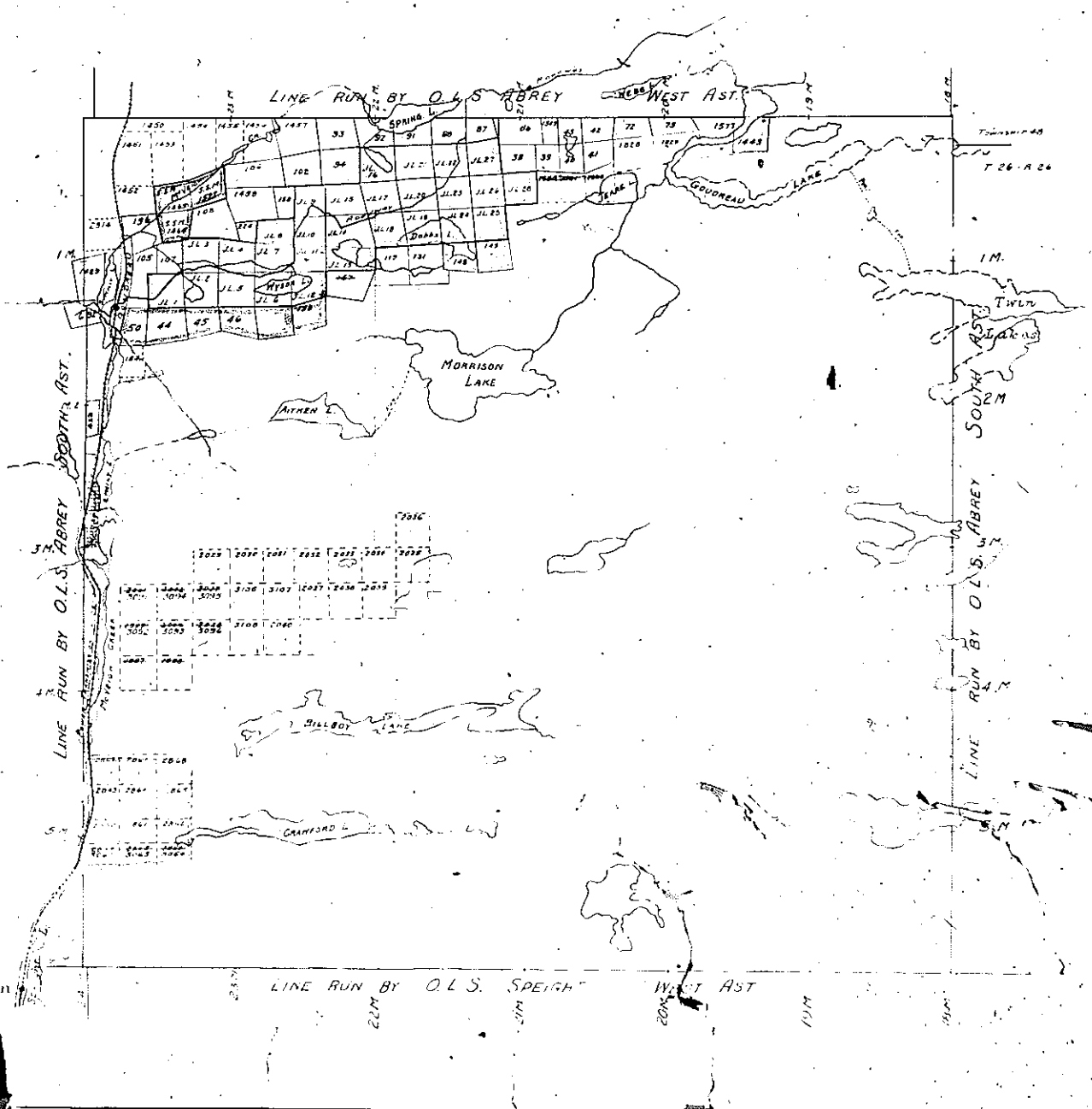
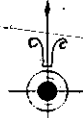
G.S.

# Tp. 27 Range XXVI.

## ALGOMA

Scale 40 chs - 1 inch

A.C. and H.B.R.  
Sault Ste Marie, Ontario.





1526

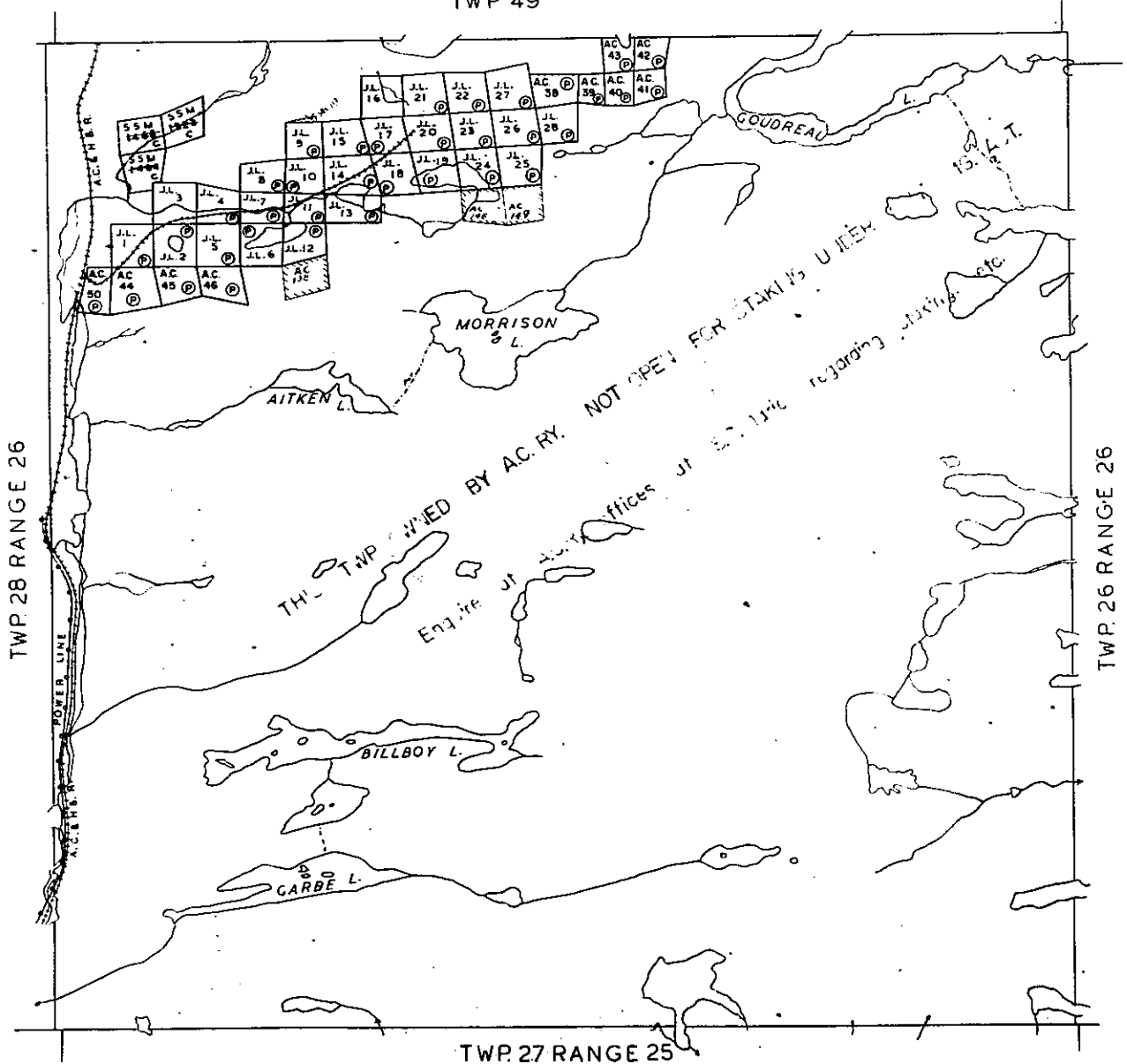
1526

# TWP. 27 RANGE 26 (AGUDONIE TWP.)

SAULT STE. MARIE MINING DIVISION  
DISTRICT OF ALGOMA  
Scale 40 Chains 1 Inch

M. 1526

TWP 49



THIS TWP. ALGOMA CENTRAL & HUDSON BAY RY. LAND GRANT.

Lands shown thus may be staked under the Ontario Mining Act. 