

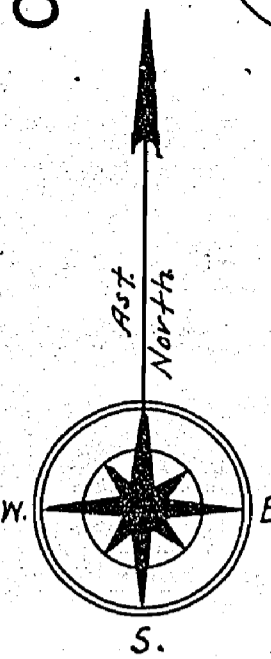
(R1) Sec. 35 W-LL-c1535/99 ONT MNS/199
M15

TWP. OF D'AVAUGOUR

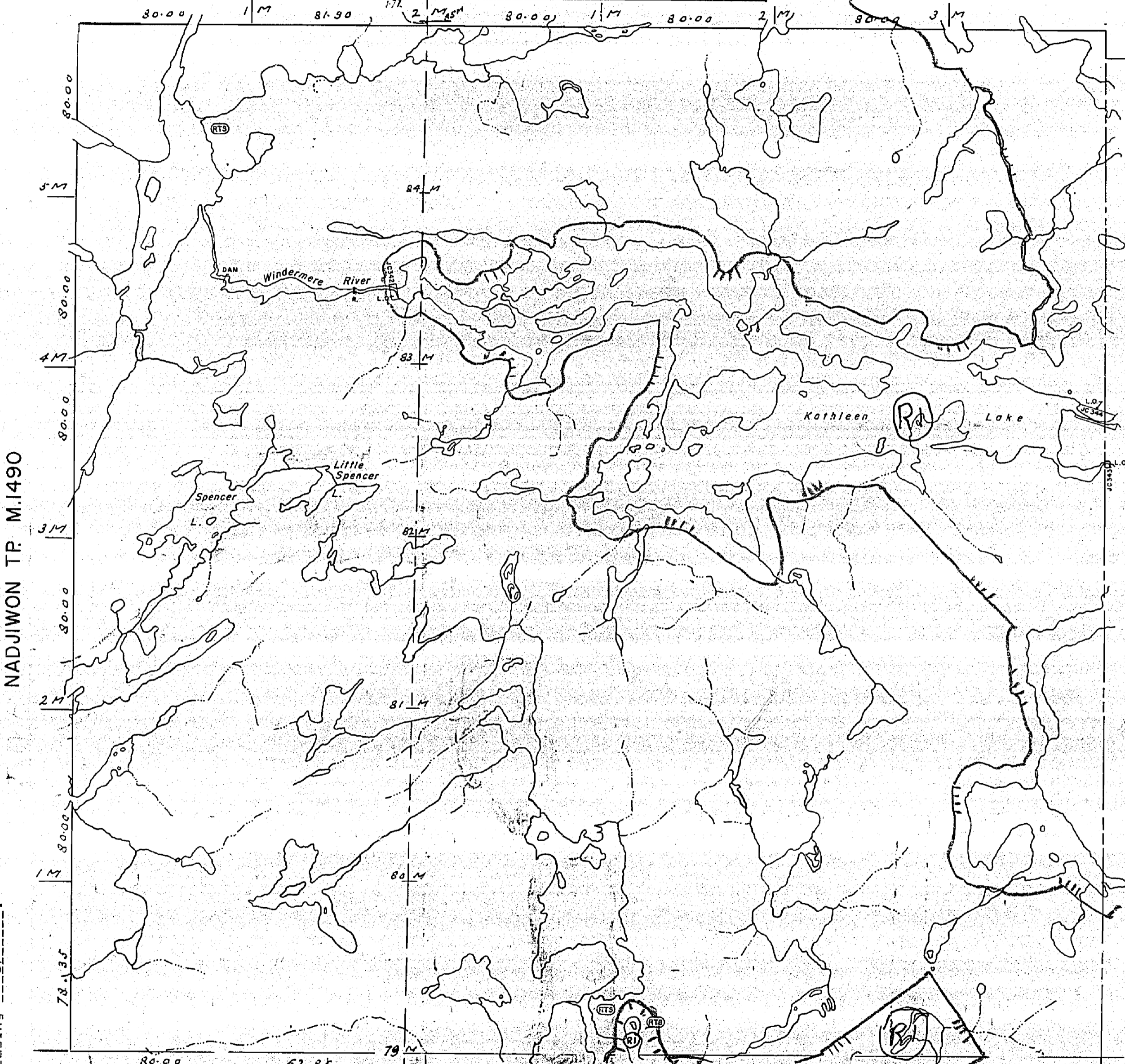
SAULT STE. MARIE - MINING DIVISION
DISTRICT OF SUDBURY

Scale 40 chains to an inch.

RECEIVED
FEB 16 1987



HORNELL TWP.



NADJWON TP. M.1490

DRUILLETES TP. M.1578

LAFORME TP. M.1491

COSENS TWP.

The 1975 Magnetic Bearing
Approx. 6.0' Annual Change
Increasing

Notes.

- Railways shown
- Paved Highways
- Gravel
- Highway Road No.
- Other Roads
- Trails
- Telephone
- Electric
- L.U.P.

- Non-perennial streams
- Bridges
- Canals
- Power Lines
- Water
- Water
- Water

THE INFORMATION THAT APPEARS ON THIS MAP HAS BEEN COMPILED FROM VARIOUS SOURCES, AND ACCURACY IS NOT GUARANTEED. THOSE WISHING TO STAKE MINING CLAIMS SHOULD CONSULT WITH THE MINING RECORDER, MINISTRY OF NORTHERN DEVELOPMENT AND MINES, FOR ADDITIONAL INFORMATION ON THE STATUS OF THE LANDS SHOWN HEREON.