

760

Shannon Twp.

THE TOWNSHIP OF

DEVITT

DISTRICT OF COCHRANE

PORCUPINE MINING DIVISION

SCALE: 1-INCH=40 CHAINS

LEGEND

- PATENTED LAND (P)
- CROWN LAND SALE (CS)
- LEASES (L)
- LOCATED LAND (Loc)
- LICENSE OF OCCUPATION (L.O.)
- ROADS (—)
- IMPROVED ROADS (—)
- KING'S HIGHWAY (—)
- RAILWAYS (—)
- POWER LINES (—)
- MARSH OR MUSKEG (—)

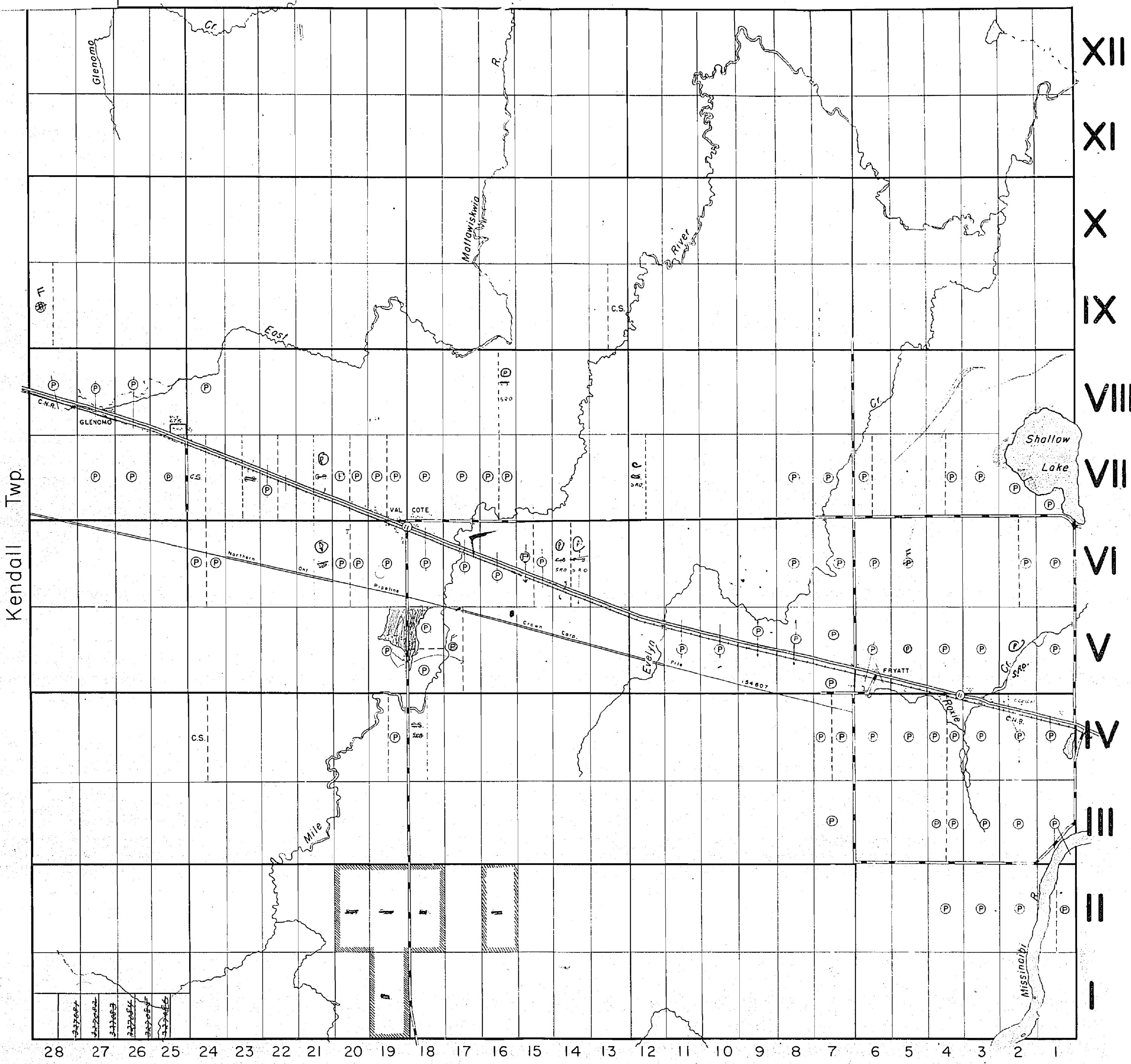
NOTES

Area marked thus *|||||* reserved for Reforestation to Dept. of Lands & Forest.

400' Surface Rights Reservation around all Lakes and Rivers.

Res. Open For Staking Sec. 43.

Asm 19 Con 5 - R. U. Leemit
Land Not Patented



Kendall Twp.

Eilber Twp.

Stauton Twp.

MINING RECORDER
RECEIVED
 SEP 2 & 1962

PORCUPINE

PLAN NO. - M 760

DEPARTMENT OF MINES - ONTARIO -

THE TOWNSHIP OF
DEVITT

DISTRICT OF COCHRANE
PORCUPINE MINING DIVISION

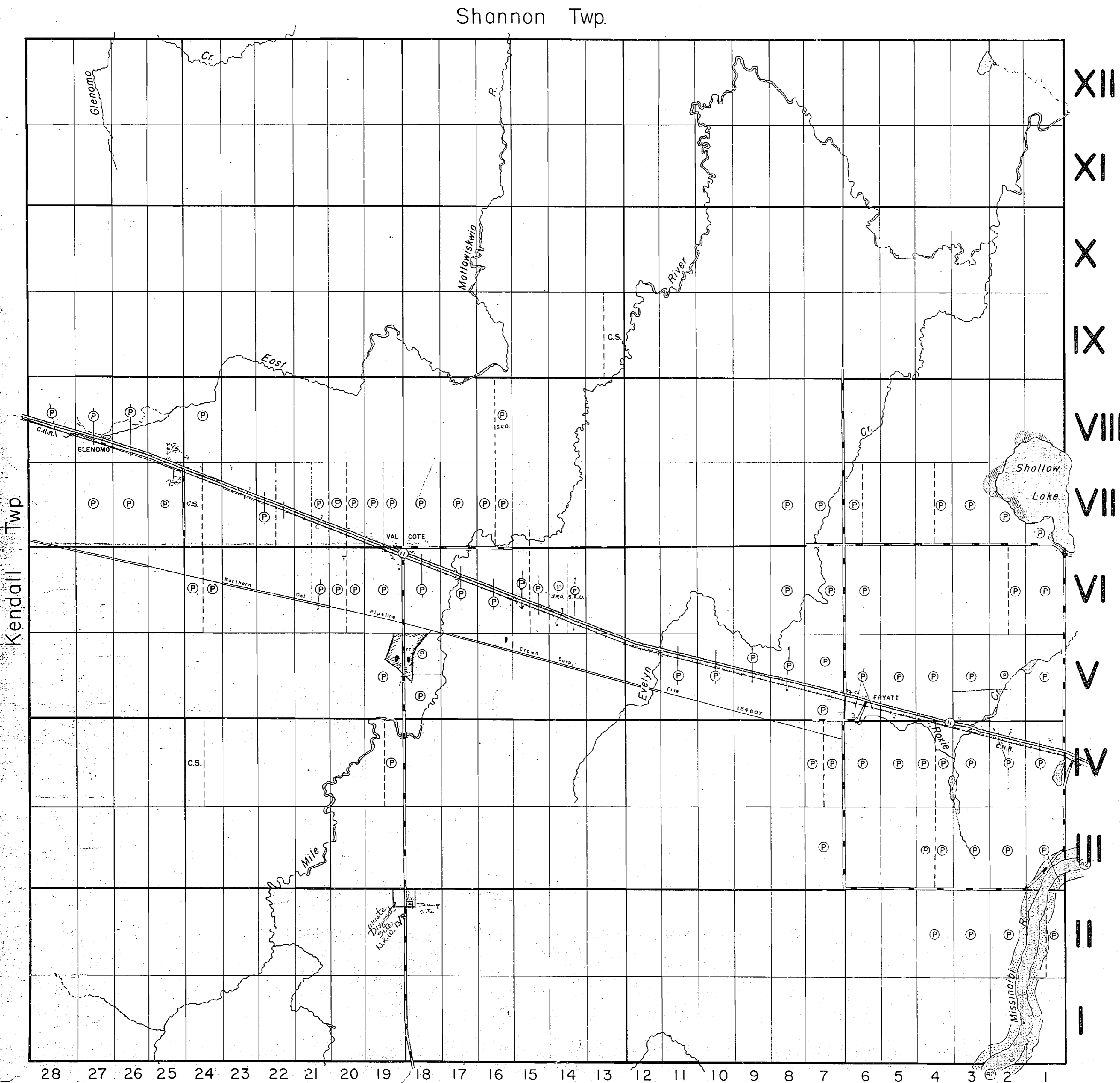
SCALE: 1-INCH=40 CHAINS

LEGEND

PATENTED LAND	(P)
CROWN LAND SALE	(C.S.)
LEASES	(L)
LOCATED LAND	(Loc)
LICENSE OF OCCUPATION	(L.O.)
ROADS	(---)
IMPROVED ROADS	(=)
KING'S HIGHWAY	(=)
RAILWAYS	(=)
POWER LINES	(=)
MARSH OR MUSKEG	(---)

NOTES

Area marked as reserved for Re-forestation by Dept. of Lands & Forests
400' Surface Rights Reservation around all Lakes and Rivers.
Areas withdrawn from staking under Section 42 of the Mining Act.
File 185159 Date Oct 10 Disposition SRA 4/2
Lot 18-19 - Conc 5 L.U.P.
• Land Use Permit



RECEIVED
DEC 10 1973
AM 7 18 19 10 11 12 1 2 3 4 5 6 PM

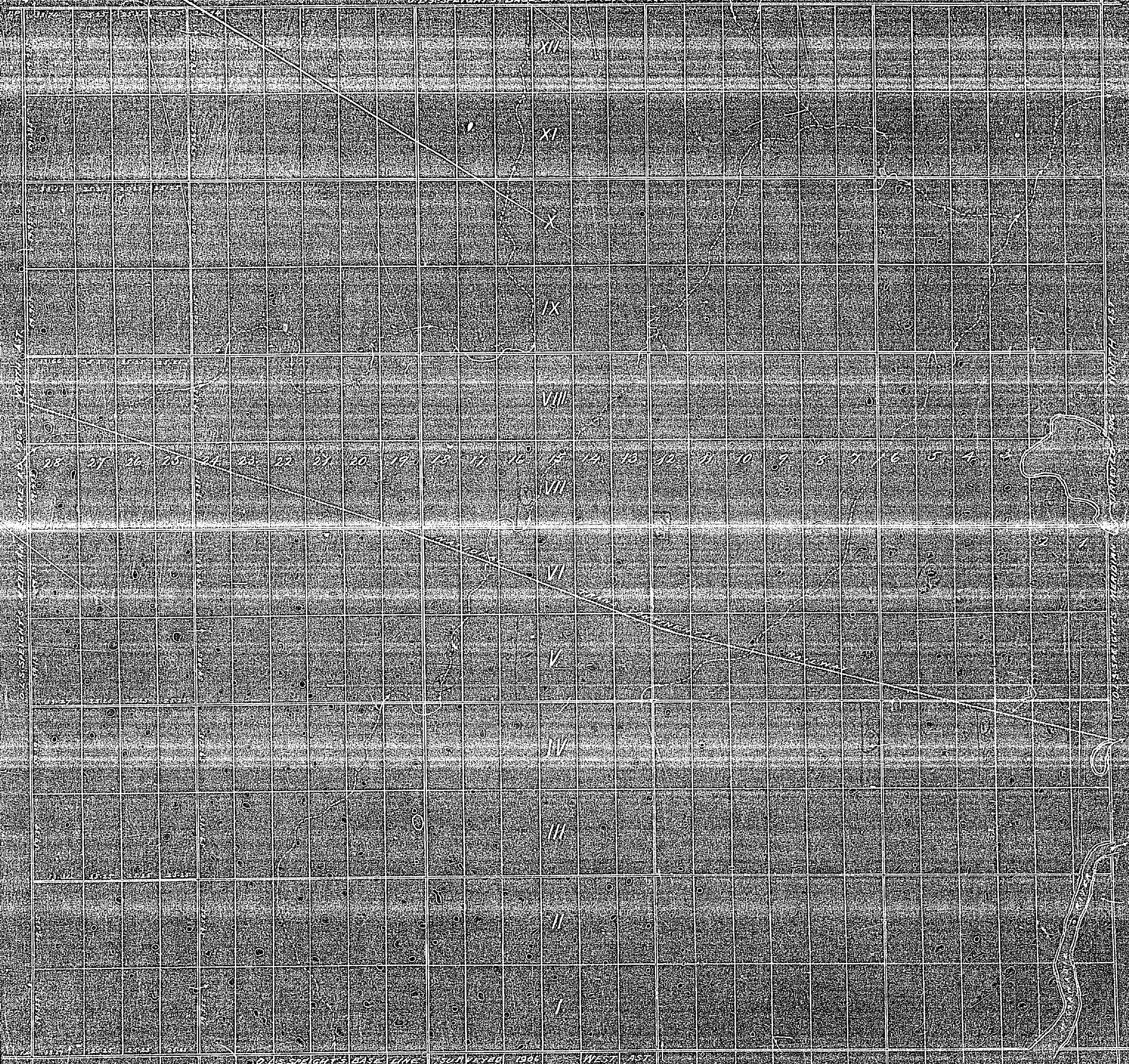
PLAN NO. - M 760

DEVITT.

DISTRICT - ALCONA

Scale - 1 inch = 1 mile

O. L. SPRIGHT'S BASE LINE SURVEYED 1840 WEST 1ST



STAUNTON

Copyright - Walter Bentley, G. L. S. 1884

*Devitt open for settlement
except Concessions 10, 11 + 12*

*Devitt open for settlement
except Concessions 10, 11 + 12*

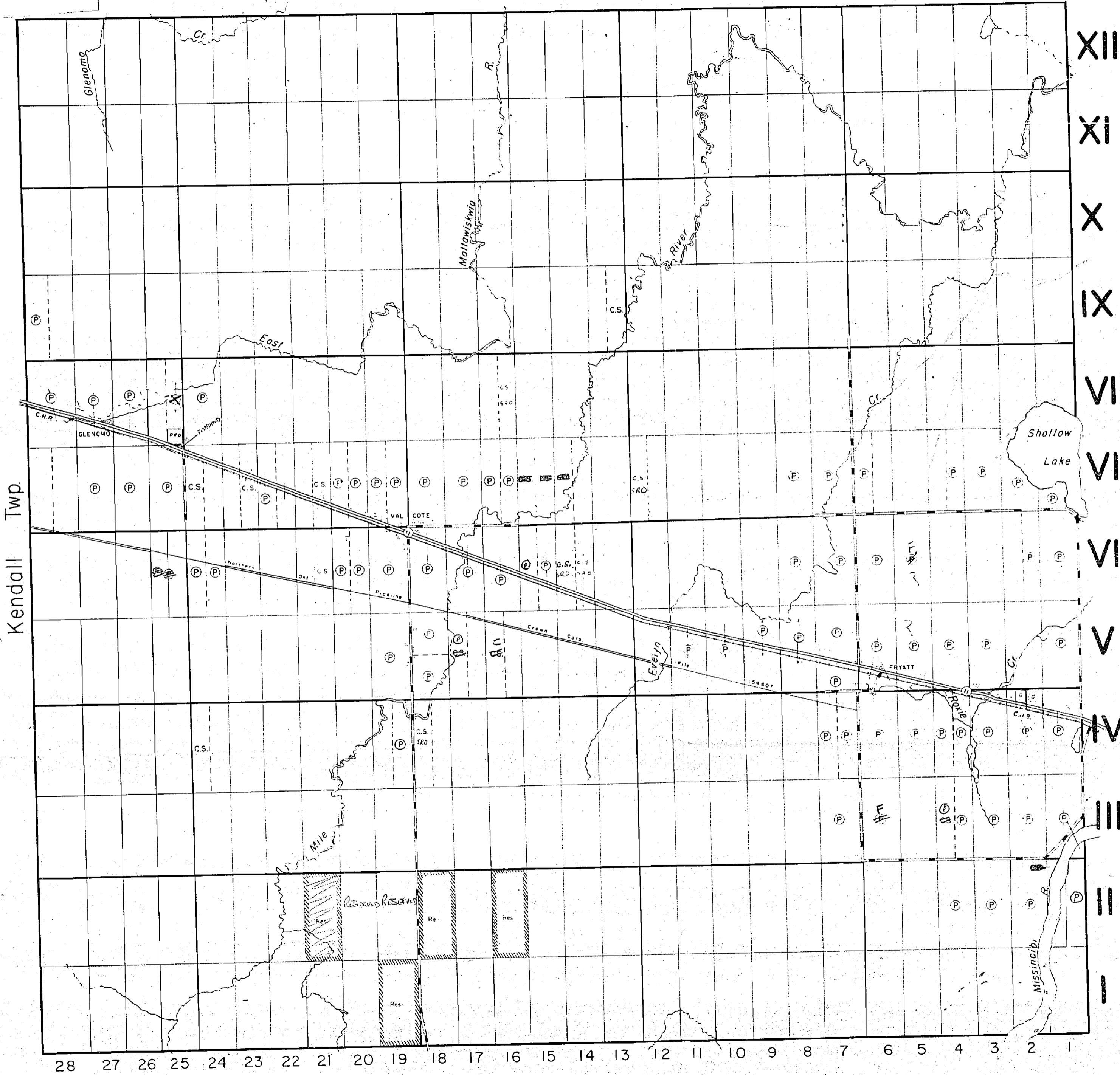
M760

LEGEND

- PATENTED LAND (P)
- CROWN LAND SALE (CS)
- LEASES (L)
- LOCATED LAND (Loc)
- LICENSE OF OCCUPATION (L.O.)
- ROADS (—)
- IMPROVED ROADS (—)
- KING'S HIGHWAY (—)
- RAILWAYS (—)
- POWER LINES (—)
- MARSH OR MUSKEG (—)

NOTES

Area marked thus reserved for Reforestation to Dept. of Lands & Forest.



Kendall Twp.

Eilber Twp.

Stauton Twp.

760

Shannon Twp.

THE TOWNSHIP OF

DEVITT

DISTRICT OF COCHRANE

PORCUPINE MINING DIVISION

SCALE: 1-INCH= 40 CHAINS

LEGEND

- PATENTED LAND (P)
- CROWN LAND SALE (C.S.)
- LEASES (L)
- LOCATED LAND (Loc)
- LICENSE OF OCCUPATION (L.O.)
- ROADS (—)
- IMPROVED ROADS (—)
- KING'S HIGHWAY (—)
- RAILWAYS (—)
- POWER LINES (—)
- MARSH OR MUSKEG (—)

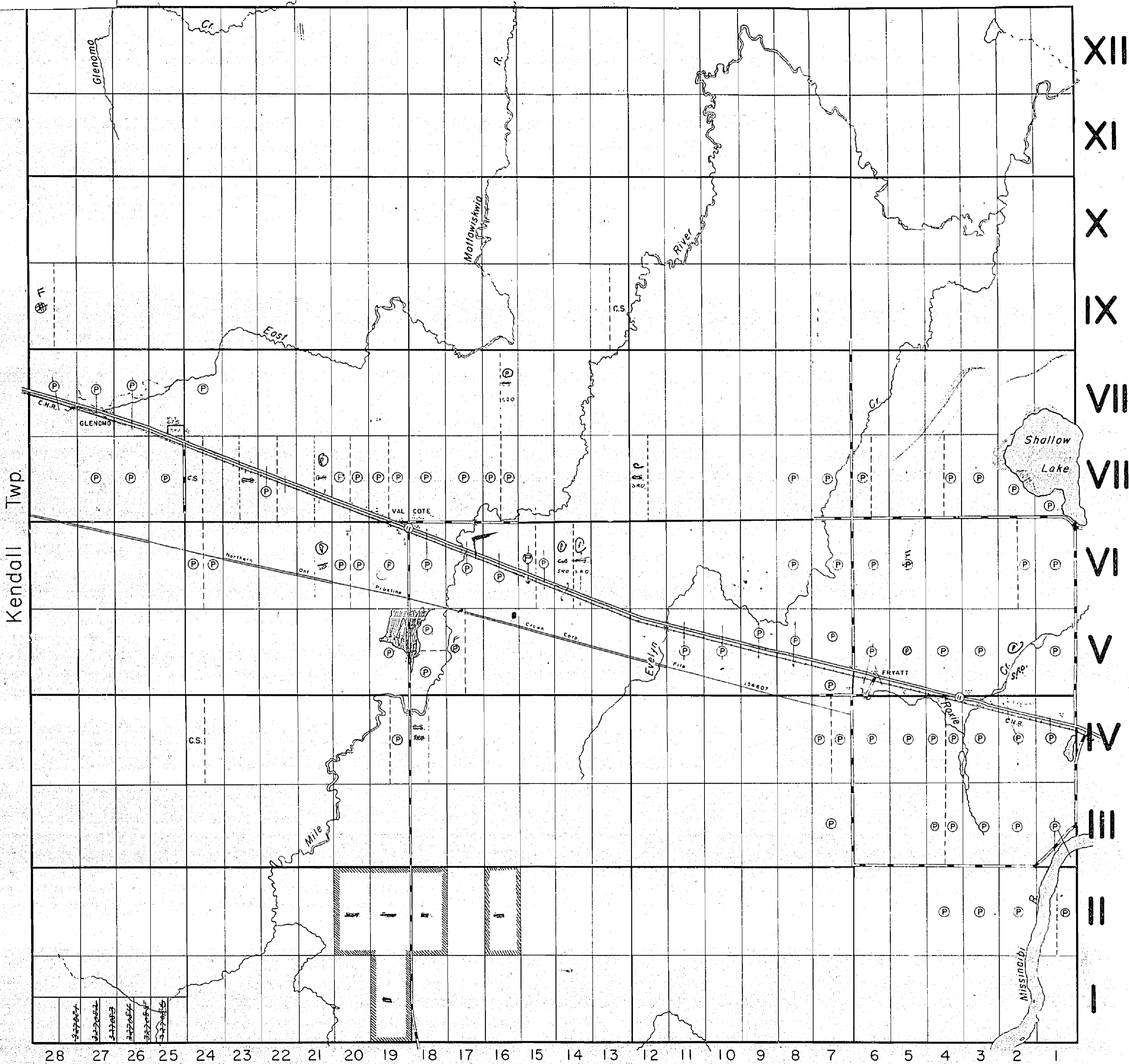
NOTES

Area marked thus //// reserved for Reforestation to Dept. of Lands & Forest.

400' Surface Rights Reservation around all Lakes and Rivers.

Res. Open For Staking Sec. 43.

Lot 19 Cont. 5 - R. U. Leamit
© Leamit & Co. Ltd.



Kendall Twp.

Eilber Twp.

Stauton Twp.

MINING RECORDER
RECEIVED
SEP 28 1962

PORCUPINE

PLAN NO. - M 760

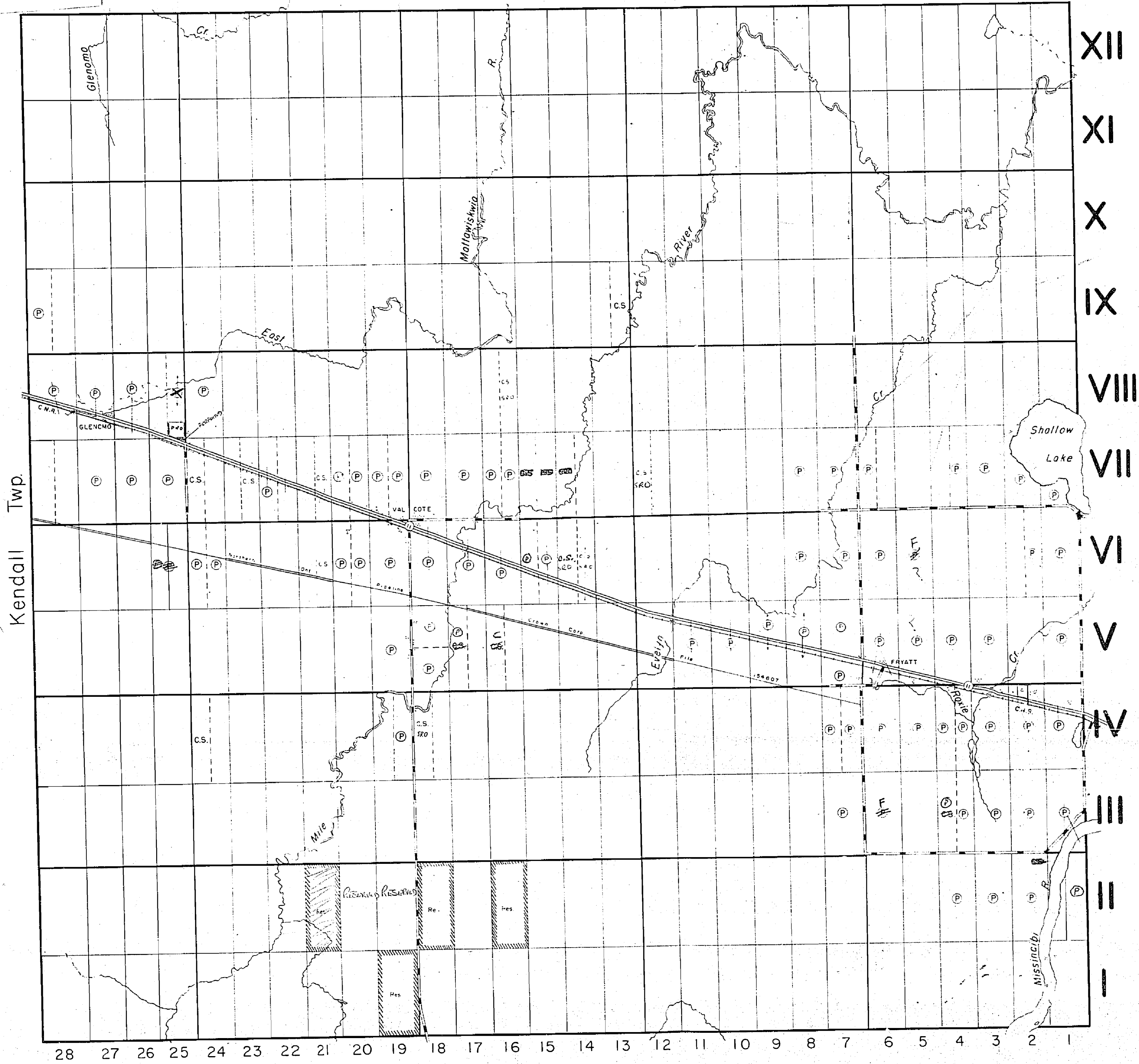
DEPARTMENT OF MINES
—ONTARIO—

LEGEND

PATENTED LAND	(P)
CROWN LAND SALE	(CS)
LEASES	(L)
LOCATED LAND	Loc
LICENSE OF OCCUPATION	L.O.
ROADS	—
IMPROVED ROADS	—
KING'S HIGHWAY	—
RAILWAYS	—
POWER LINES	—
MARSH OR MUSKEG	—

NOTES

Area marked thus: [hatched] reserved for
Reforestation to Dept. of Lands & Forest.



Kendall Twp.

Eilber Twp.

Stauton Twp.

Shannon Twp.

THE TOWNSHIP OF
OF

DEVITT

DISTRICT OF
COCHRANE

PORCUPINE
MINING DIVISION

SCALE: 1-INCH=40 CHAINS

LEGEND

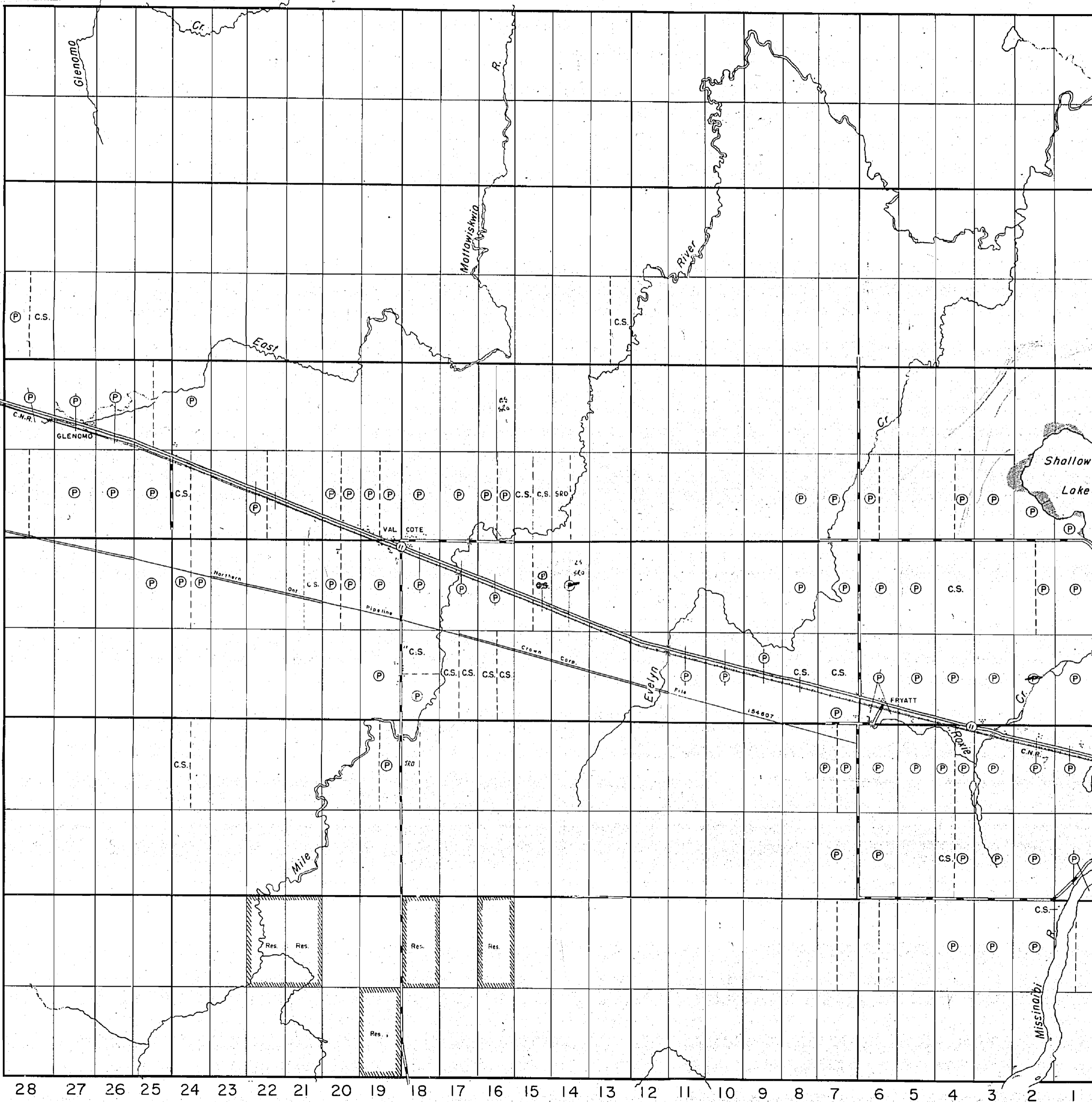
- PATENTED LAND Ⓟ
- CROWN LAND SALE C.S.
- LEASES Ⓛ
- LOCATED LAND Loc.
- LICENSE OF OCCUPATION L.O.
- ROADS —
- IMPROVED ROADS —
- KING'S HIGHWAY —
- RAILWAYS —
- POWER LINES —
- MARSH OR MUSKEG —

NOTES

Area marked thus: reserved for
Reforestation to Dept. of Lands & Forest.

Kendall Twp.

Eilber Twp.



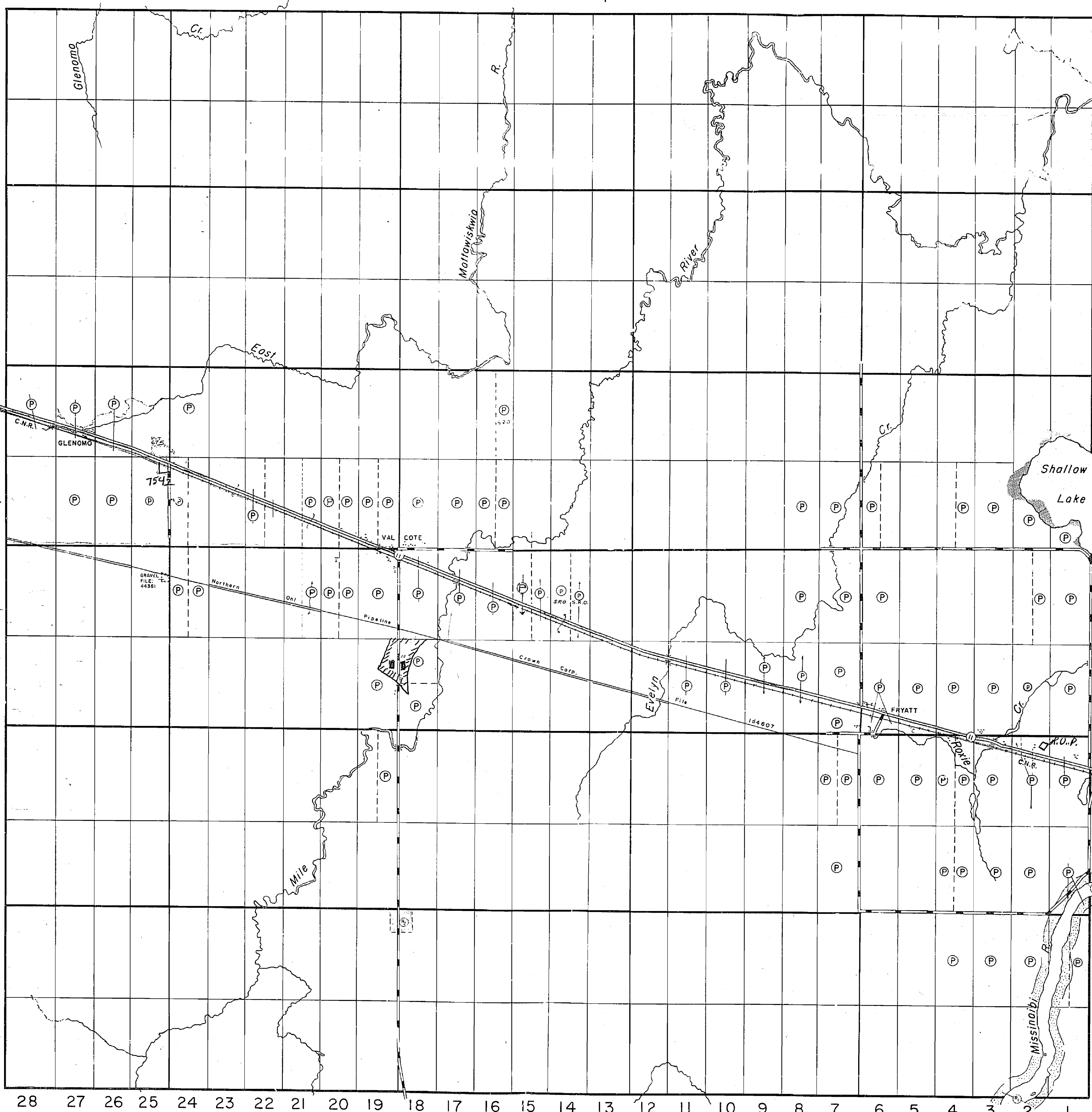
28 27 26 25 24 23 22 21 20 19 18 17 16 15 14 13 12 11 10 9 8 7 6 5 4 3 2 1

Stauton Twp.

PLAN NO. - M 760

DEPARTMENT OF MINES
—ONTARIO—

Shannon Twp.



THE TOWNSHIP OF

DEVITT

DISTRICT OF COCHRANE

PORCUPINE MINING DIVISION

SCALE: 1-INCH=40 CHAINS

LEGEND

- PATENTED LAND (P)
- CROWN LAND SALE LEASES (C.S.)
- LOCATED LAND (L)
- LICENSE OF OCCUPATION Loc.
- ROADS L.O.
- IMPROVED ROADS [Symbol]
- KING'S HIGHWAY [Symbol]
- RAILWAYS [Symbol]
- POWER LINES [Symbol]
- MARSH OR MUSKEG [Symbol]

NOTES

Area marked thus: [Symbol] reserved for Reforestation to Dept. of Lands & Forest.

400' Surface Rights Reservation around all Lakes and Rivers.

Areas withdrawn from staking under Section 43 of the Mining Act (R.S.O. 1970).

Order No.	File	Date	Disposition
13781 NR.	183199	8/15/70	S.N.B.M.R.
	66574	12/2/81	S.R.O.

J. U. P.

Kendall Twp.

Eilber Twp.

28 27 26 25 24 23 22 21 20 19 18 17 16 15 14 13 12 11 10 9 8 7 6 5 4 3 2 1

Stauton Twp.

PLAN NO. - M 760

ONTARIO
MINISTRY OF NATURAL RESOURCES
SURVEYS AND MAPPING BRANCH

Shannon Twp.

THE TOWNSHIP OF
OF

DEVITT

DISTRICT OF
COCHRANE

PORCUPINE
MINING DIVISION

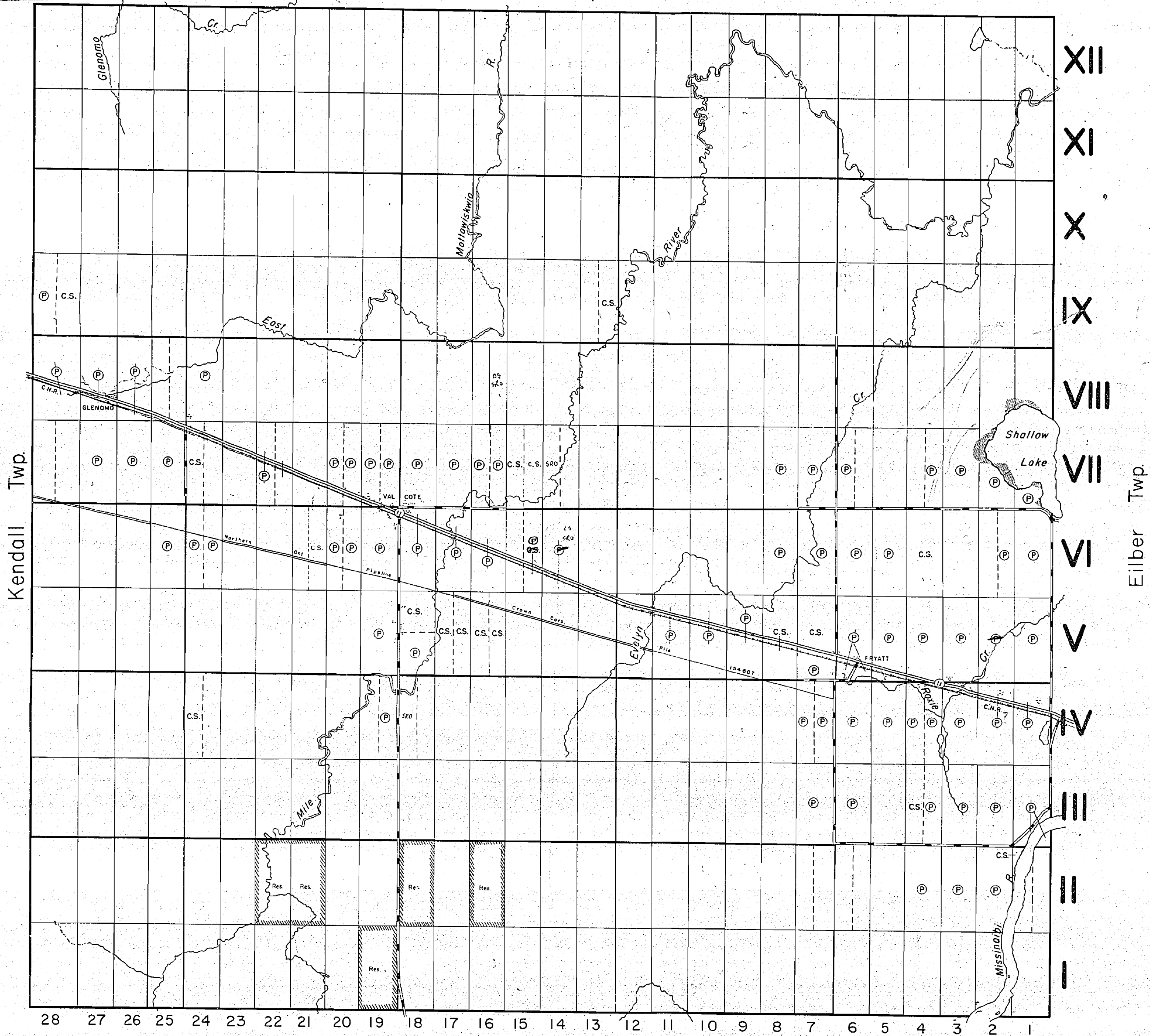
SCALE: 1-INCH=40 CHAINS

LEGEND

- PATENTED LAND Ⓟ
- CROWN LAND SALE C.S.
- LEASES Ⓛ
- LOCATED LAND Loc.
- LICENCE OF OCCUPATION L.O.
- ROADS —
- IMPROVED ROADS —
- KING'S HIGHWAY —
- RAILWAYS —
- POWER LINES —
- MARSH OR MUSKEG —

NOTES

Area marked thus: reserved for Reforestation to Dept. of Lands & Forest.



Kendall Twp.

Eilber Twp.

Stauton Twp.

PLAN NO. - M 760

DEPARTMENT OF MINES
—ONTARIO—

Twp file

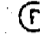
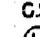
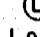
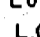

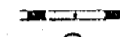



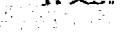

DEVITT

DISTRICT OF COCHRANE

SUDBURY MINING DIVISION

SCALE: 1-INCH=40 CHAINS

LEGEND

- PATENTED LAND 
- CROWN LAND SALE 
- LEASES 
- LOCATED LAND 
- LICENSE OF OCCUPATION 
- ROADS 
- IMPROVED ROADS 
- KING'S HIGHWAY 
- RAILWAYS 
- POWER LINES 
- MARSH OR MUSKEG 

NOTES

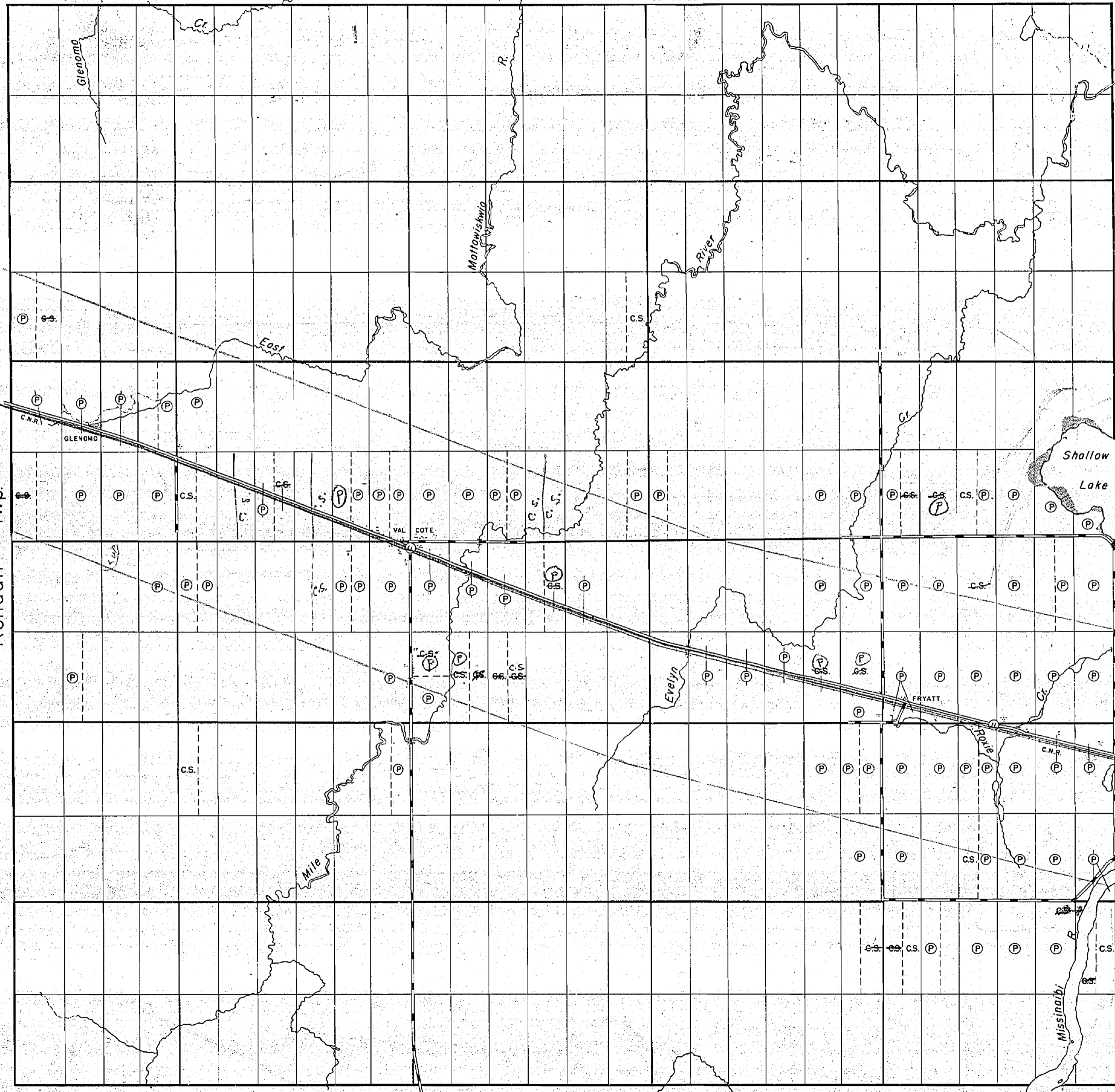
1 mile Right of way reserved on all claims on each side of National Gas Line 9th Sept 20th 195

XII
XI
X
IX
VIII
VII
VI
V
IV
III
II
I

Kendall Twp.

Eilber Twp.

Proposed National Gas Line

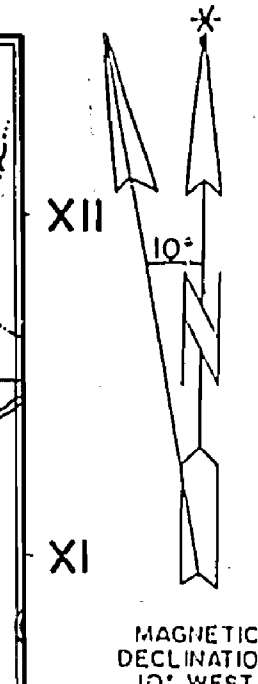
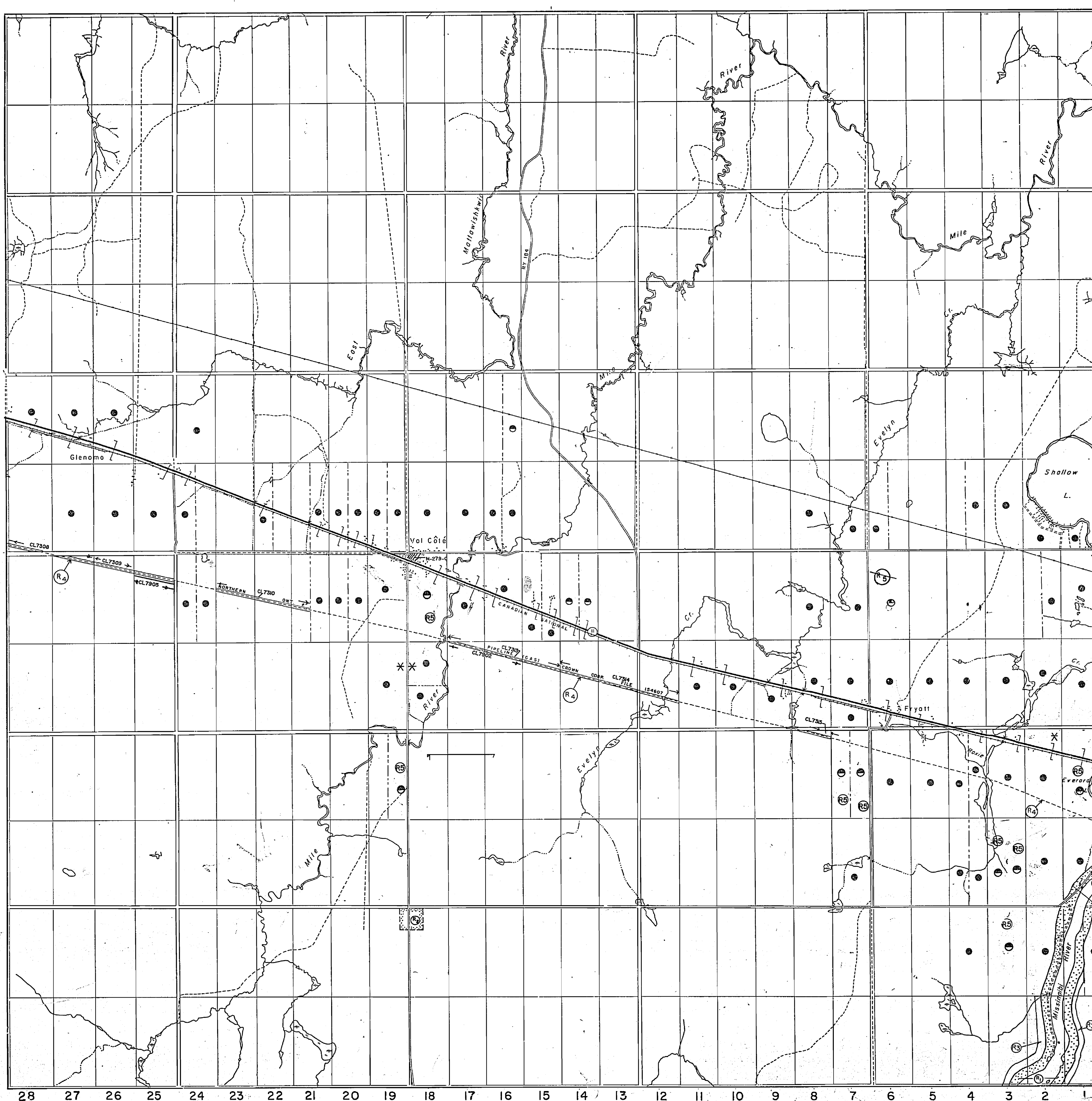


28 27 26 25 24 23 22 21 20 19 18 17 16 15 14 13 12 11 10 9 8 7 6 5 4 3 2 1

M-760

SHANNON TWP.

KENDALL TWP.

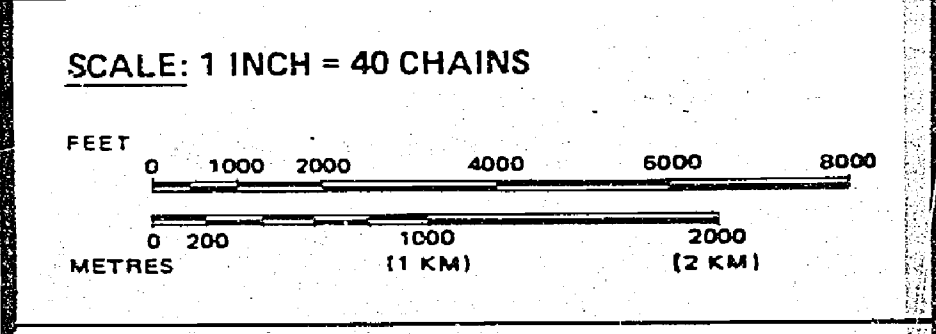


HIGHWAY AND ROUTE No.	
OTHER ROADS	
TRAILS	
SURVEYED LINES:	
TOWNSHIPS, BASE LINES, ETC.	
LOTS, MINING CLAIMS, PARCELS, ETC.	
UNSURVEYED LINES:	
LOT LINES	
PARCEL BOUNDARY	
MINING CLAIMS ETC.	
RAILWAY AND RIGHT OF WAY	
UTILITY LINES	
NON-PERENNIAL STREAM	
FLOODING OR FLOODING RIGHTS	
SUBDIVISION OR COMPOSITE PLAN	
RESERVATIONS	
ORIGINAL SHORELINE	
MARSH OR MUSKEG	
MINES	
TRAVERSE MONUMENT	

DISPOSITION OF CROWN LANDS

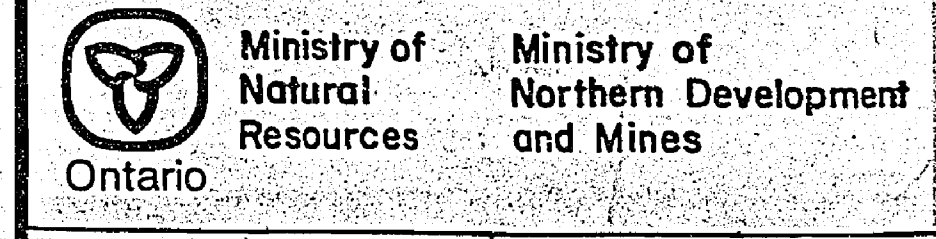
TYPE OF DOCUMENT	SYMBOL
PATENT, SURFACE & MINING RIGHTS	
" SURFACE RIGHTS ONLY	
" MINING RIGHTS ONLY	
LEASE, SURFACE & MINING RIGHTS	
" SURFACE RIGHTS ONLY	
" MINING RIGHTS ONLY	
LICENCE OF OCCUPATION	
ORDER-IN-COUNCIL	
RESERVATION	
CANCELLED	
SAND & GRAVEL	
LAND USE PERMIT	

NOTE: MINING RIGHTS IN PARCELS PATENTED PRIOR TO MAY 6 1913, VESTED IN ORIGINAL PATENTEE BY THE PUBLIC LANDS ACT, R.S.O. 1970, CHAP. 380, SEC. 63, SUBSEC 1.



THE INFORMATION THAT APPEARS ON THIS MAP HAS BEEN COMPILED FROM VARIOUS SOURCES, AND ACCURACY IS NOT GUARANTEED. THOSE WISHING TO STAKE MINING CLAIMS SHOULD CONSULT WITH THE MINING RECORDER, MINISTRY OF NORTHERN DEVELOPMENT AND MINES, FOR ADDITIONAL INFORMATION ON THE STATUS OF THE LANDS SHOWN HEREON.

TOWNSHIP
DEVITT
M.N.R. ADMINISTRATIVE DISTRICT
HEARST
MINING DIVISION
PORCUPINE
LAND TITLES / REGISTRY DIVISION
COCHRANE



STAUNTON TWP.

Shannon Twp.

THE TOWNSHIP OF DEVITT

DISTRICT OF COCHRANE

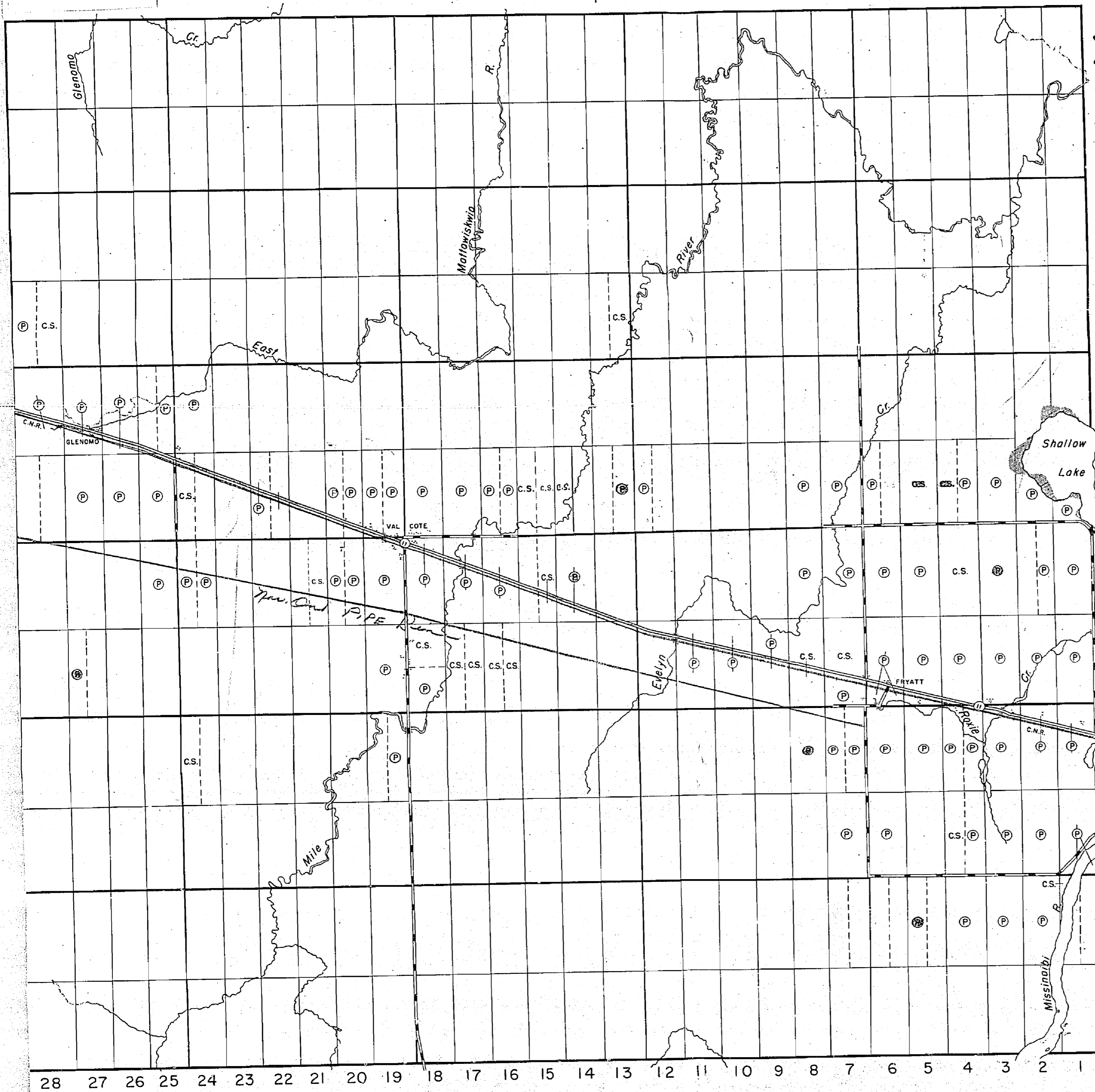
PORCUPINE MINING DIVISION

SCALE: 1-INCH=40 CHAINS

LEGEND

- PATENTED LAND (P)
- CROWN LAND SALE (C.S.)
- LEASES (L)
- LOCATED LAND (Loc.)
- LICENSE OF OCCUPATION (L.O.)
- ROADS (—)
- IMPROVED ROADS (—)
- KING'S HIGHWAY (—)
- RAILWAYS (—)
- POWER LINES (—)
- MARSH OR MUSKEG (—)

NOTES



XII
XI
X
IX
VIII
VII
VI
V
IV
III
II
I

Eilber Twp.

28 27 26 25 24 23 22 21 20 19 18 17 16 15 14 13 12 11 10 9 8 7 6 5 4 3 2 1

Stauton Twp.

Shannon Twp.

Twp file

THE TOWNSHIP OF

DEVITT

DISTRICT OF COCHRANE

SUDBURY MINING DIVISION

SCALE: 1-INCH = 40 CHAINS

LEGEND

- PATENTED LAND Ⓟ
- CROWN LAND SALE Ⓢ.
- LEASES Ⓛ
- LOCATED LAND Loc.
- LICENSE OF OCCUPATION L.O.
- ROADS —
- IMPROVED ROADS —
- KING'S HIGHWAY —
- RAILWAYS —
- POWER LINES —
- MARSH OR MUSKEG —

NOTES

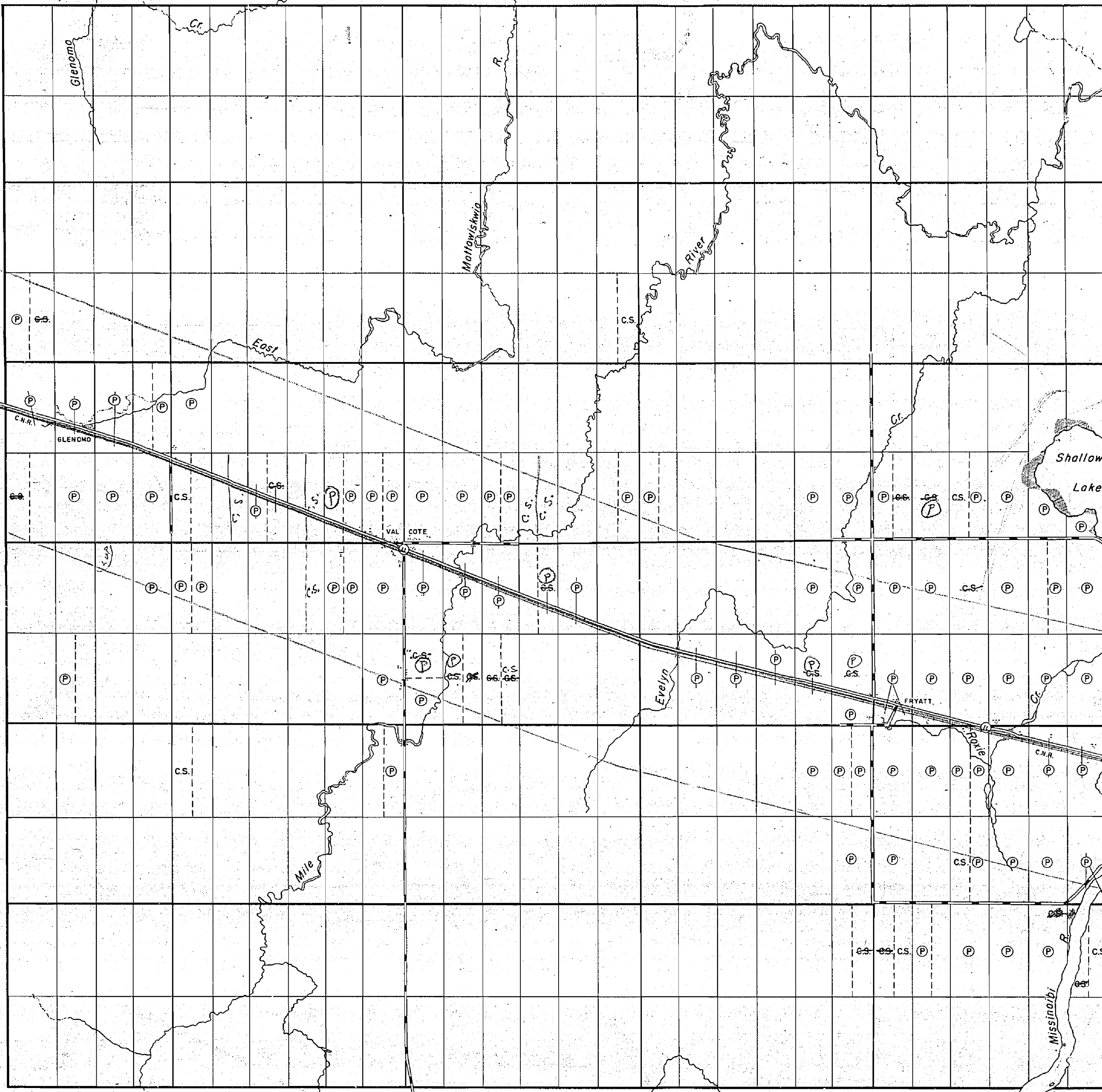
1 mile Right of way reserved on all claims on each side of Northern Gas line 9/7/11 Sept 24/15

XII
 XI
 X
 IX
 VIII
 VII
 VI
 V
 IV
 III
 II
 I

Kendall Twp.

Eilber Twp.

Provincial Natural Gas Line



28 27 26 25 24 23 22 21 20 19 18 17 16 15 14 13 12 11 10 9 8 7 6 5 4 3 2 1

Stauton Twp.

M. 760

PLAN NO. -S-136

DEPARTMENT OF MINES
—ONTARIO—

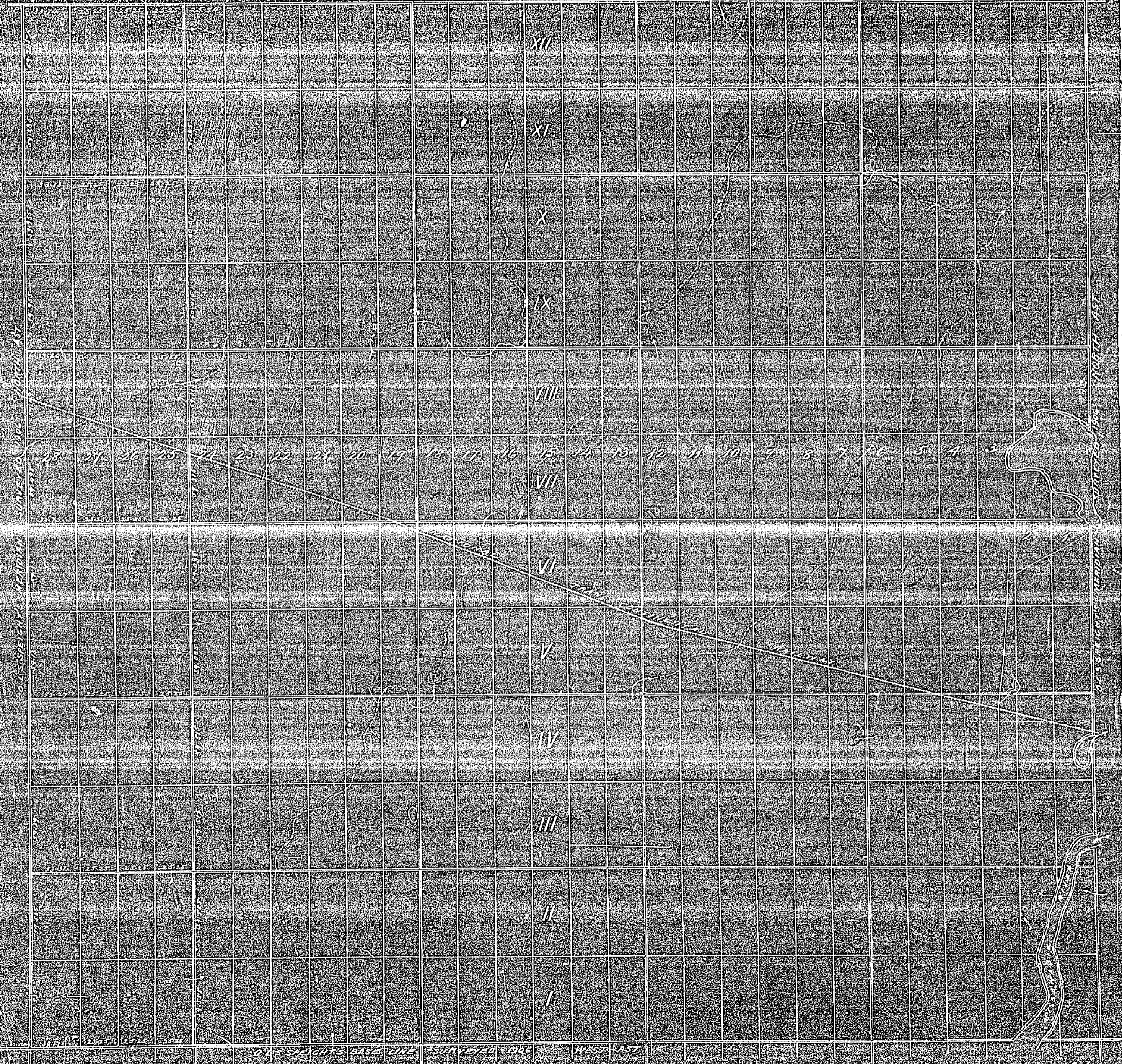
760

DEVITT.

DISTRICT OF ALGONIA

Scale 1:25000

DEVIFF'S BASE LINE SURVEYED 1886 WEST 1ST



STAUNTON

Copyright 1886 by Wm. Devitt

Devitt's map for settlement 1886
June 30 June 1886

Devitt open for settlement
except Concessions 10. 11 + 12

M760