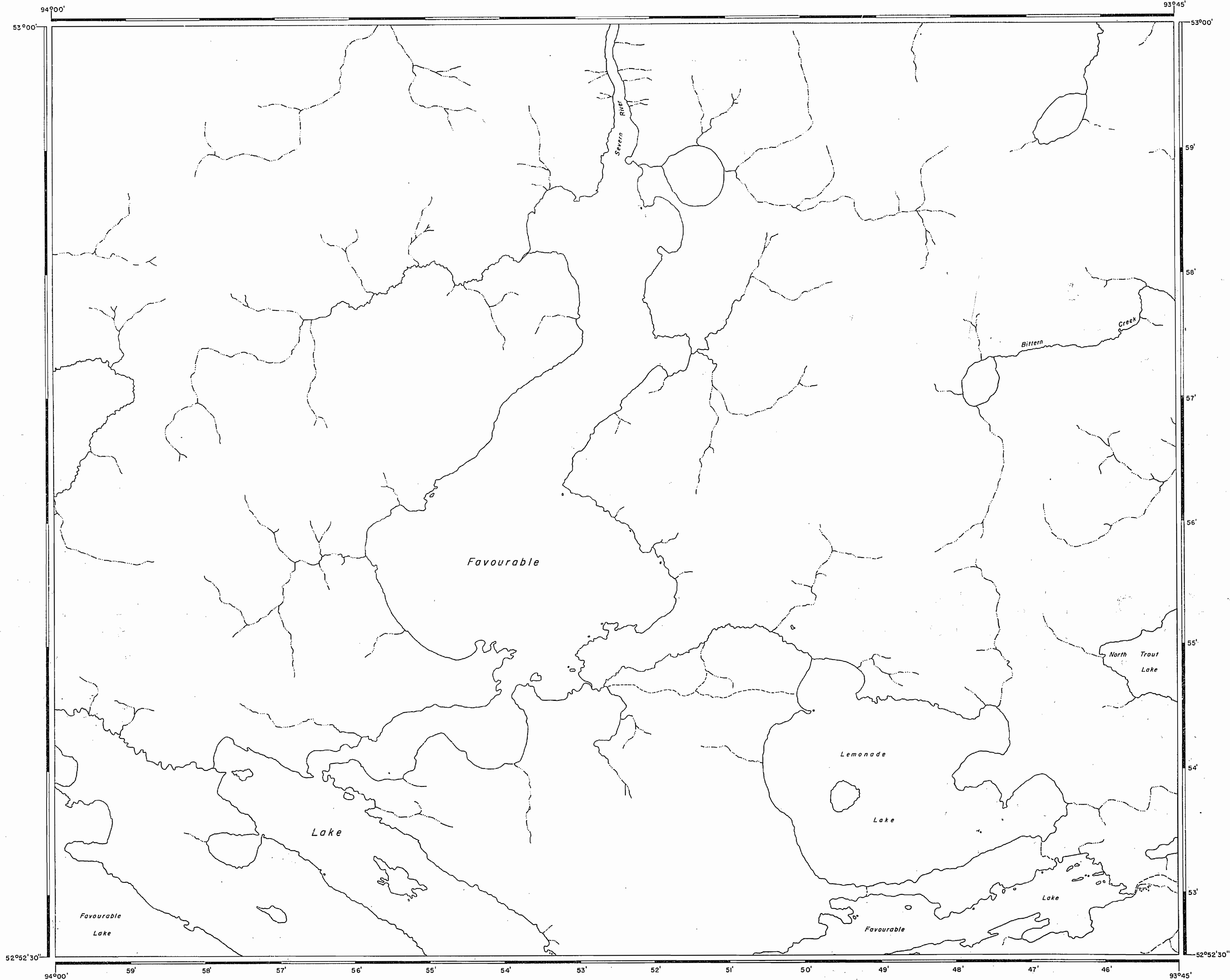


TRIM LINE

North of Favourable Lake G-1827



Favourable Lake (South part) G-1775

REFERENCES

AREAS WITHDRAWN FROM DISPOSITION

* M.R.O. - MINING RIGHTS ONLY
S.R.O. - SURFACE RIGHTS ONLY
M.+S. - MINING AND SURFACE RIGHTS

Description	Order No.	Date	Disposition	File
-------------	-----------	------	-------------	------

LEGEND

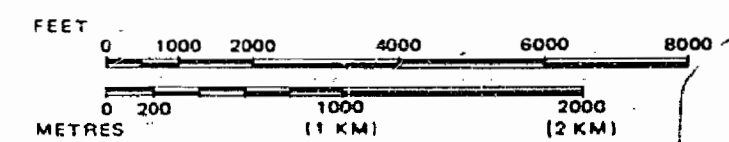
HIGHWAY AND ROUTE No.
OTHER ROADS
TRAILS
SURVEYED LINES:
TOWNSHIPS, BASE LINES, ETC.
LOTS, MINING CLAIMS, PARCELS, ETC.
UNSURVEYED LINES:
LOT LINES
PARCEL BOUNDARY
MINING CLAIMS ETC.
RAILWAY AND RIGHT OF WAY
UTILITY LINES
NON-PERENNIAL STREAM
FLOODING OR FLOODING RIGHTS
SUBDIVISION OR COMPOSITE PLAN
RESERVATIONS
ORIGINAL SHORELINE
MARSH OR MUSKEG
MINES
TRAVERSE MONUMENT

DISPOSITION OF CROWN LANDS

TYPE OF DOCUMENT	SYMBOL
PATENT, SURFACE & MINING RIGHTS	
" SURFACE RIGHTS ONLY	
" MINING RIGHTS ONLY	
LEASE, SURFACE & MINING RIGHTS	
" SURFACE RIGHTS ONLY	
" MINING RIGHTS ONLY	
LICENCE OF OCCUPATION	
ORDER-IN-COUNCIL	
RESERVATION	
CANCELLED	
SAND & GRAVEL	

NOTE: MINING RIGHTS IN PARCELS PATENTED PRIOR TO MAY 6, 1915, VESTED IN ORIGINAL PATENTEE BY THE PUBLIC LANDS ACT, R.S.O. 1979, CHAP. 380, SEC. 63, SUBSEC. 1.

SCALE: 1 INCH = 40 CHAINS

AREA
FAVOURABLE LAKE
(NORTH PART)

M.N.R. ADMINISTRATIVE DISTRICT

RED LAKE

MINING DIVISION

RED LAKE

LAND TITLES / REGISTRY DIVISION

KENORA / PATRICIA

Ministry of
Natural
ResourcesLand
Management
BranchDate
FEBRUARY 14, 1983Number
G-1774

THE INFORMATION THAT
APPEARS ON THIS MAP
HAS BEEN COMPILED
FROM VARIOUS SOURCES,
AND ACCURACY IS NOT
GUARANTEED. THOSE
WISHING TO STAKE MIN-
ING CLAIMS SHOULD CON-
SULT WITH THE MINING
RECORDER, MINISTRY OF
NORTHERN DEVELOP-
MENT AND MINES, FOR AD-
DITIONAL INFORMATION
ON THE STATUS OF THE
LANDS SHOWN HEREON.

2880

M3020

AREA OF

FAVOURABLE LAKE
NORTH PART

DISTRICT OF
KENORA
PATRICIA PORTION

RED LAKE
MINING DIVISION

SCALE: 1-INCH = 40 CHAINS

LEGEND

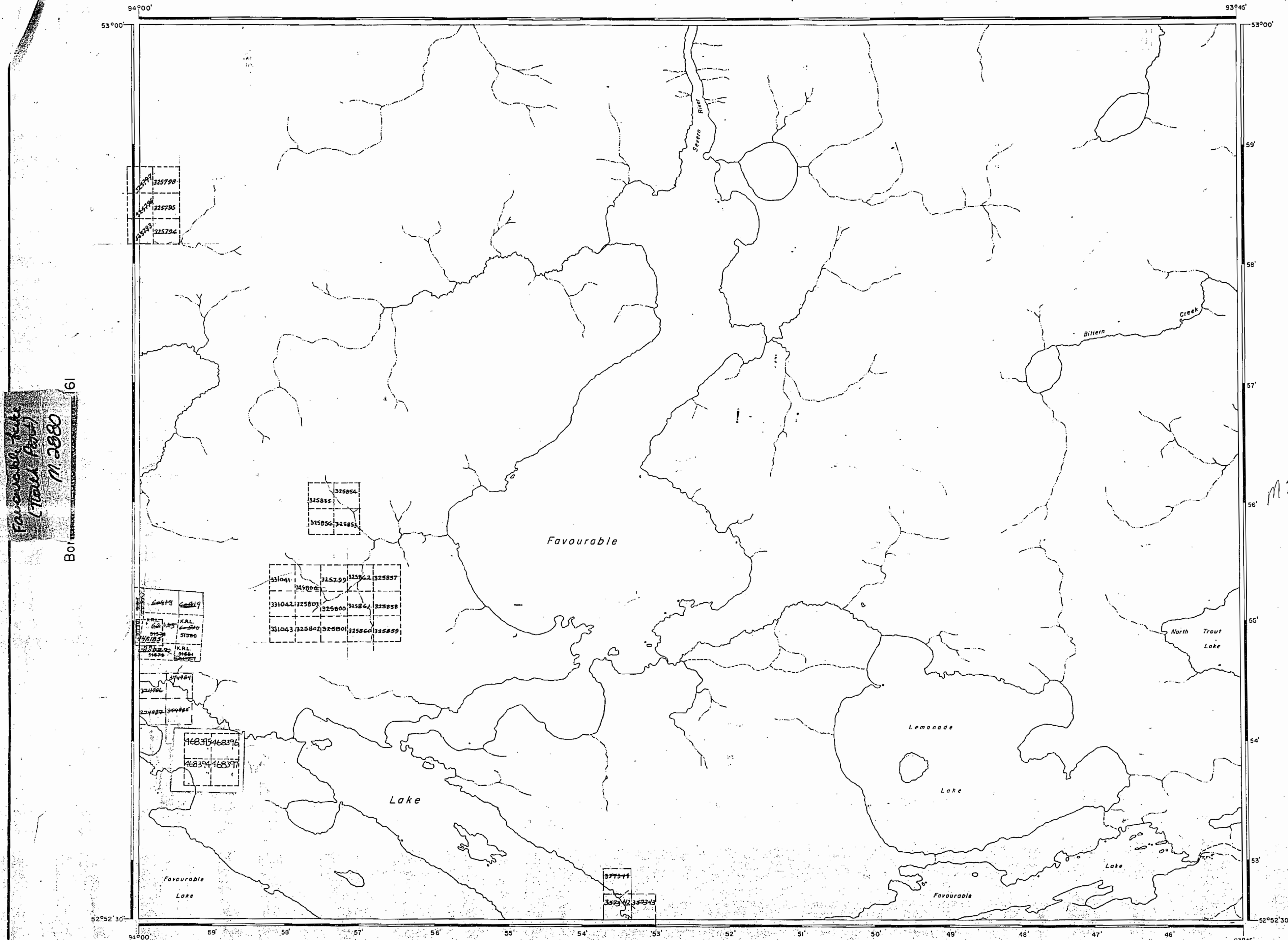
PATENTED LAND	Ⓟ
CROWN LAND SALE	C.S.
LEASES	Ⓛ
LOCATED LAND	Loc.
LICENSE OF OCCUPATION	L.O.
MINING RIGHTS ONLY	M.R.O.
SURFACE RIGHTS ONLY	S.R.O.
ROADS	—
IMPROVED ROADS	—
KING'S HIGHWAYS	—
RAILWAYS	—
POWER LINES	—
MARSH OR MUSKEG	—
MINES	—
CANCELLED	C.

NOTES

400' Surface Rights Reservation around
all lakes and rivers.

PLAN NO. M.2880

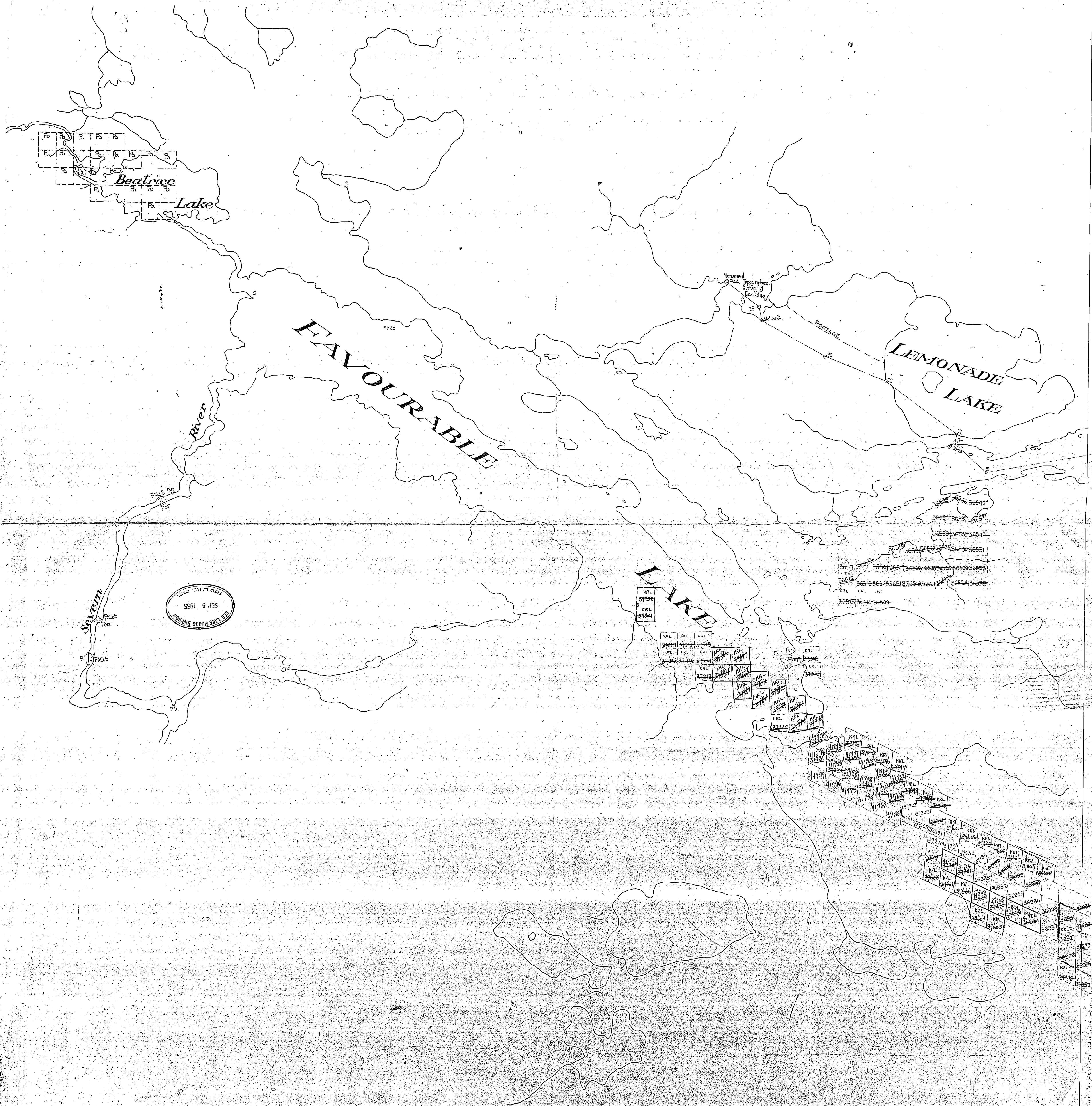
DEPARTMENT OF MINES
ONTARIO

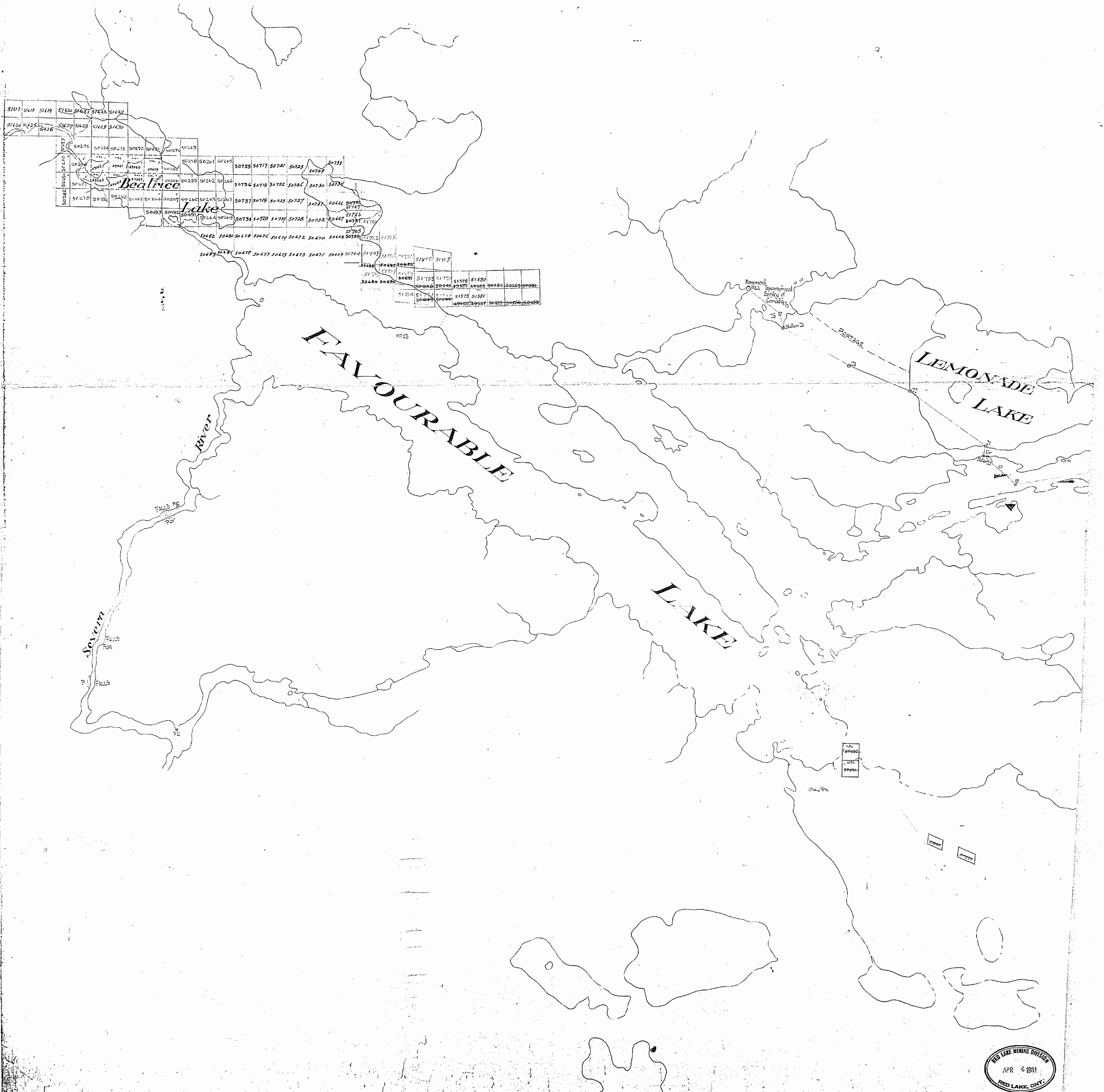


Favourable Lake (South part) - M.2881

Favourable Lake
(Patricia Portion)
M.2880

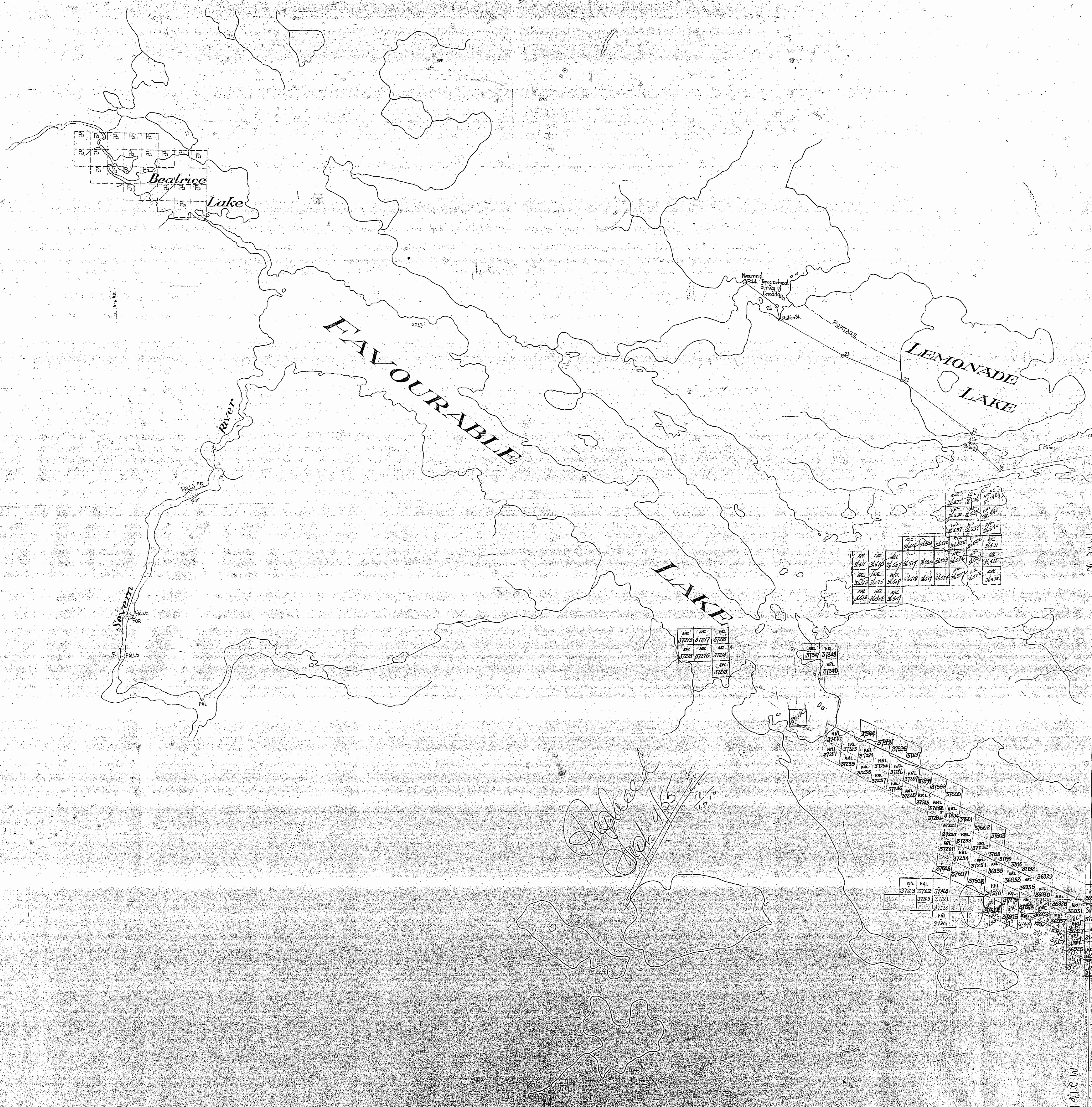
M.2883





FAVOURABLE LAKE AREA.

M-2161



2880

M3020

AREA OF

FAVOURABLE LAKE NORTH PART

DISTRICT OF
KENORA
PATRICIA PORTION

RED LAKE
MINING DIVISION

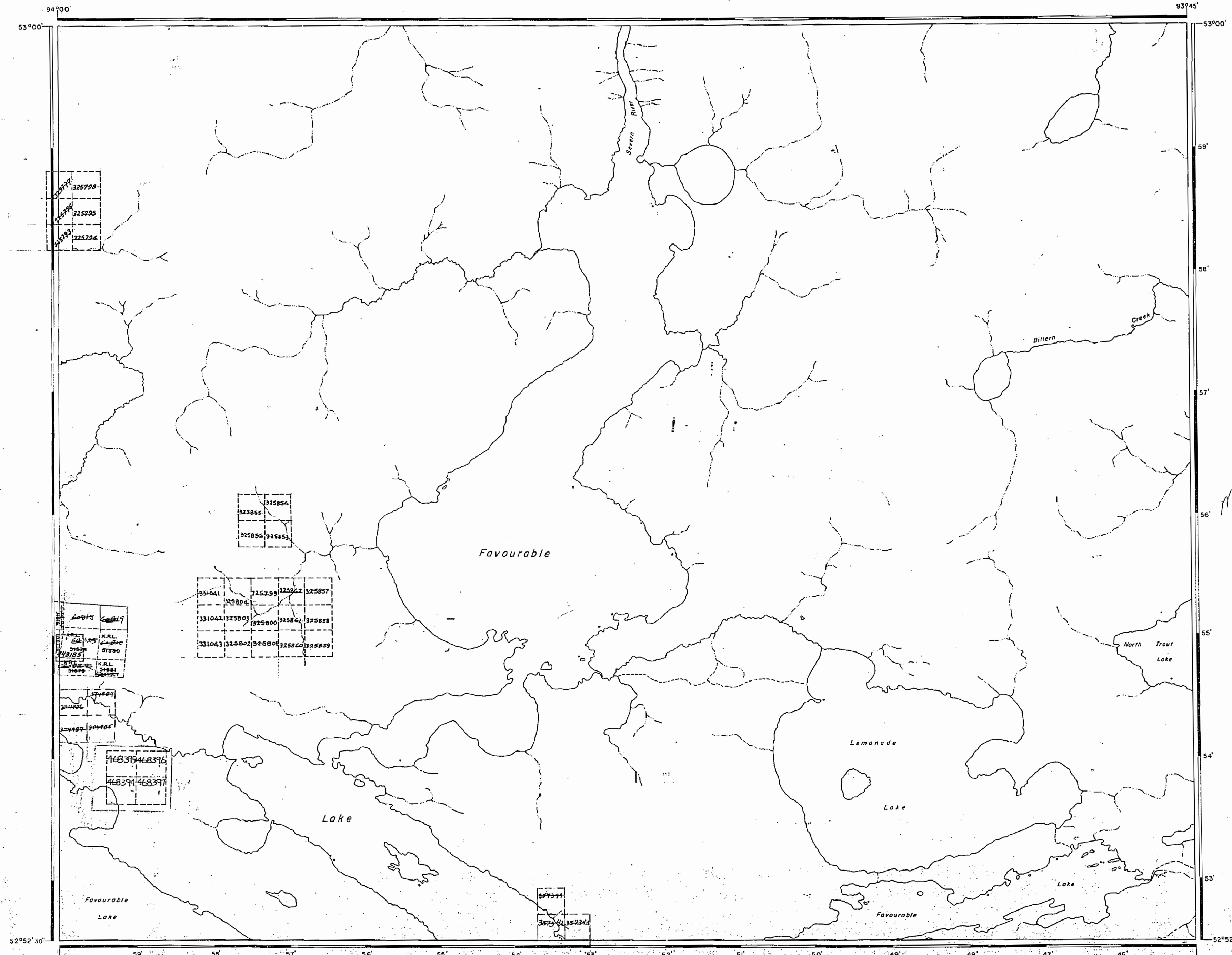
SCALE: 1-INCH = 40 CHAINS

LEGEND

PATENTED LAND	Ⓟ
CROWN LAND SALE	C.S.
LEASES	Ⓛ
LOCATED LAND	Loc.
LICENSE OF OCCUPATION	L.O.
MINING RIGHTS ONLY	M.R.O.
SURFACE RIGHTS ONLY	S.R.O.
ROADS	—
IMPROVED ROADS	—
KING'S HIGHWAYS	—
RAILWAYS	—
POWER LINES	—
MARSH OR MUSKEG	—
MINES	—
CANCELLED	C.

NOTES

400' Surface Rights Reservation around
all lakes and rivers.



Favourable Lake (South part) - M.2881

PLAN NO. M.2880

DEPARTMENT OF MINES

— ONTARIO —