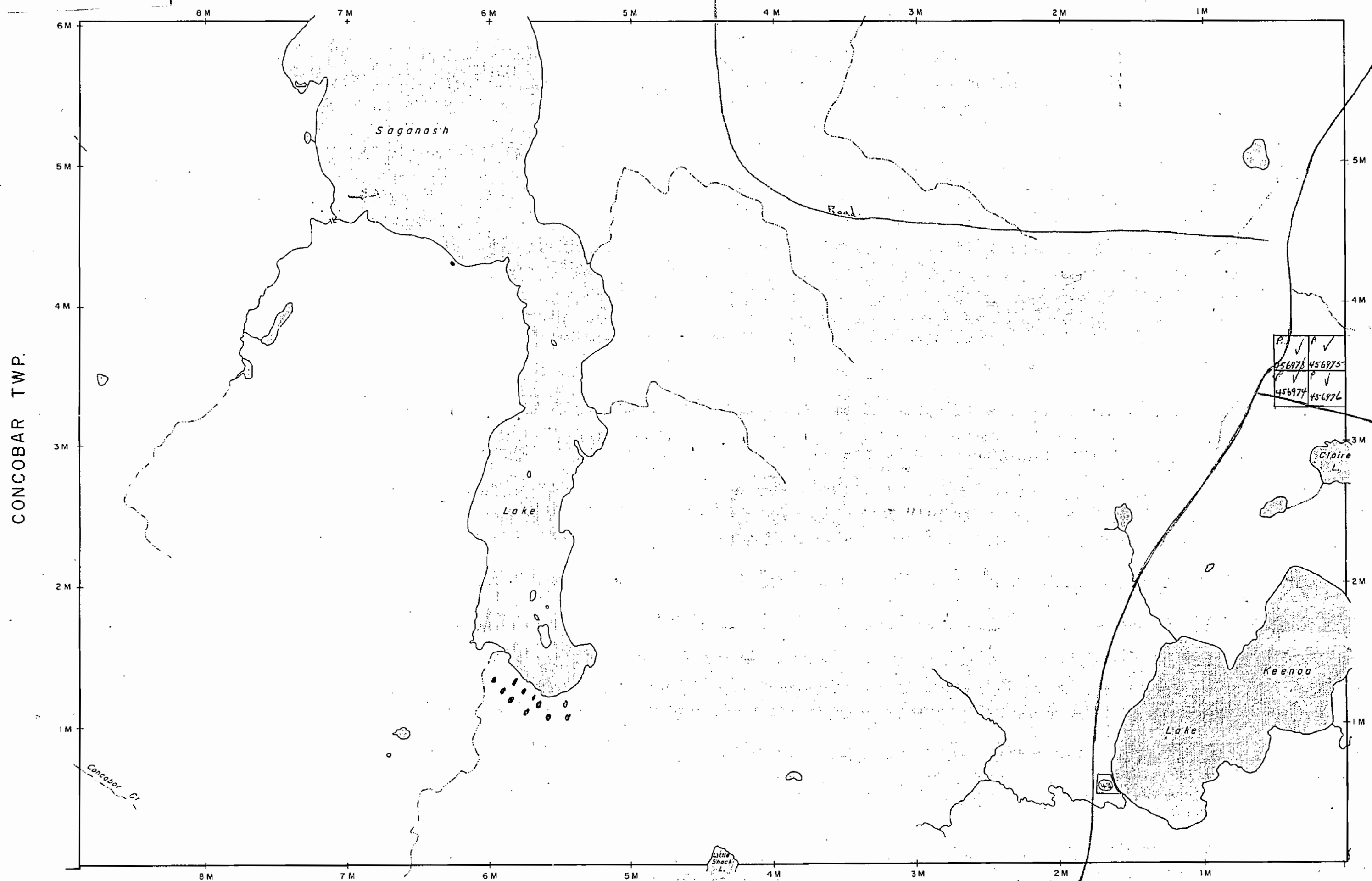


806

STAPLES TWP.

M - 1125



THE TOWNSHIP OF

FENTON

DISTRICT OF COCHRANE

PORCUPINE MINING DIVISION

SCALE: 1-INCH = 40 CHAINS

LEGEND

PATENTED LAND	Ⓟ
CROWN LAND SALE	C.S.
LEASES	Ⓛ
LOCATED LAND	Loc.
LICENSE OF OCCUPATION	L.O.
MINING RIGHTS ONLY	M.R.O.
SURFACE RIGHTS ONLY	S.R.O.
ROADS	—
IMPROVED ROADS	—
KING'S HIGHWAYS	—
RAILWAYS	—
POWER LINES	—
MARSH OR MUSKEG	—
MINES	X
CANCELLED	C.

NOTES

• *Land Use Permit*

④ S.R.O. Withdrawn Nov 22/74

RECEIVED
DEC 10 1973
PM
7 15 10 11 12 13 14 15 16

PLAN NO. M. 806

ONTARIO
MINISTRY OF NATURAL RESOURCES
SURVEYS AND MAPPING BRANCH

SEATON TWP.

M - 1096

CONCOBAR TWP.

SLACK TWP.

THE TOWNSHIP OF

FENTON

DISTRICT OF COCHRANE

PORCUPINE MINING DIVISION

SCALE: 1-INCH=40 CHAINS

LEGEND

- PATENTED LAND Ⓟ
- CROWN LAND SALE C.S.
- LEASES Ⓞ
- LOCATED LAND Loc.
- LICENSE OF OCCUPATION L.O.
- MINING RIGHTS ONLY M.R.O.
- SURFACE RIGHTS ONLY S.R.O.
- ROADS —
- IMPROVED ROADS —
- KING'S HIGHWAYS —
- RAILWAYS —
- POWER LINES —
- MARSH OR MUSKEG —
- MINES X
- CANCELLED C.

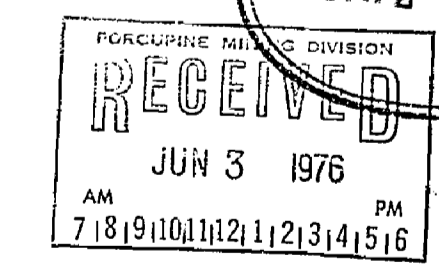
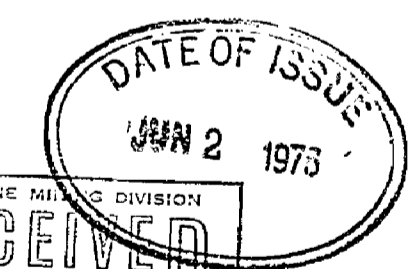
NOTES

400' surface rights reservation along the shores of all lakes and rivers.

Areas withdrawn from staking under Section 43 of the Mining Act (R.S.O. 1970).

Order No.	File	Date	Disposition
43	W.60/74	198520	22/11/74 S.R.O.

LAND USE PERMITS



PLAN NO. M. 806

ONTARIO
MINISTRY OF NATURAL RESOURCES
SURVEYS AND MAPPING BRANCH

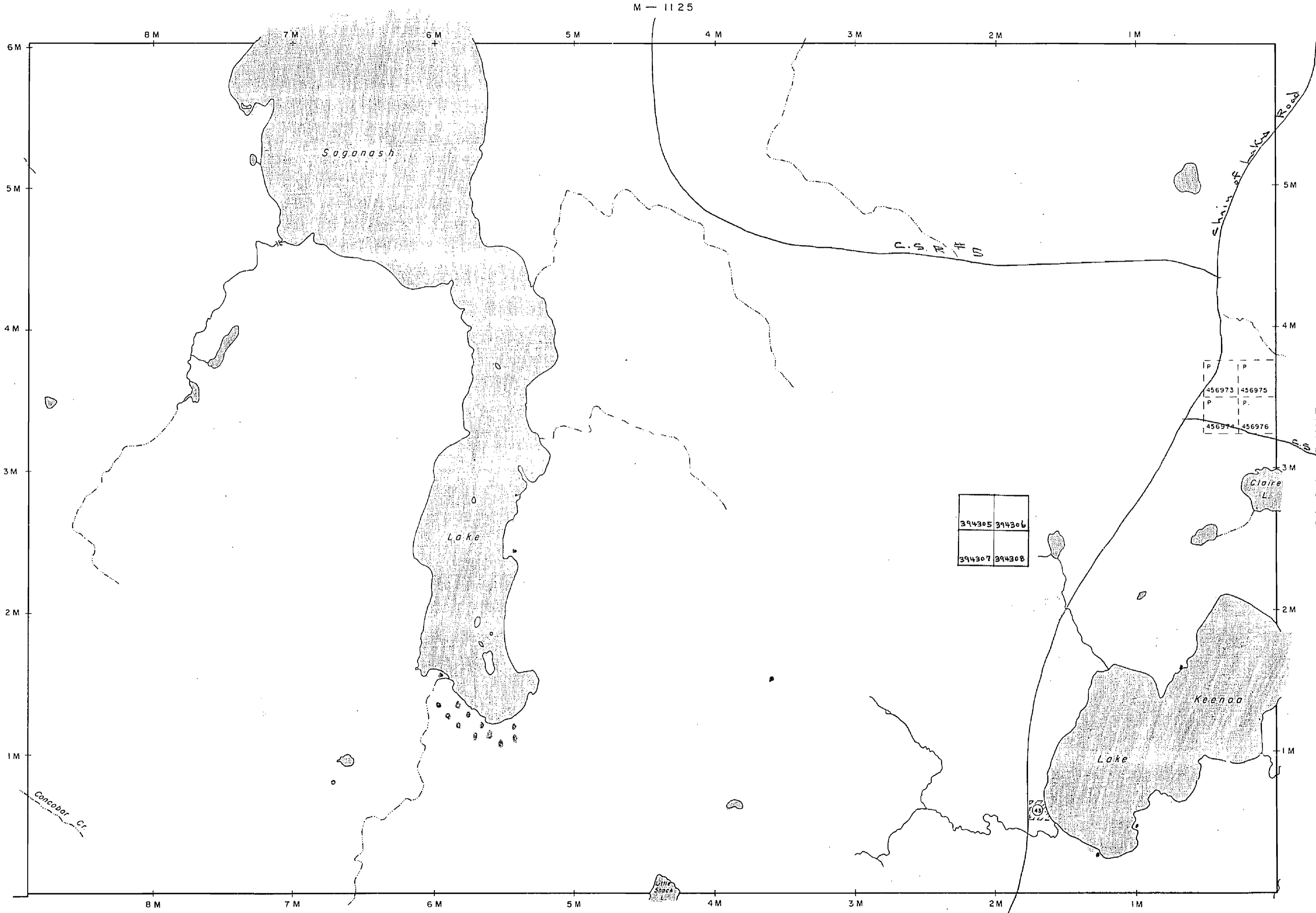
STAPLES TWP.
M-1125

SEATON TWP.
M-1096

CONCOBAR TWP.

SLACK TWP.
M-1017

FENTON TWP.



STAPLES TWP.
M - 1125

THE TOWNSHIP OF
FENTON

DISTRICT OF COCHRANE
PORCUPINE MINING DIVISION

SCALE: 1-INCH = 40 CHAINS

LEGEND

- | | |
|-----------------------|--------|
| PATENTED LAND | ⊙ |
| CROWN LAND SALE | C.S. |
| LEASES | ⊖ |
| LOCATED LAND | Loc. |
| LICENSE OF OCCUPATION | L.O. |
| MINING RIGHTS ONLY | M.R.O. |
| SURFACE RIGHTS ONLY | S.R.O. |
| ROADS | — |
| IMPROVED ROADS | — |
| KING'S HIGHWAYS | — |
| RAILWAYS | — |
| POWER LINES | — |
| MARSH OR MUSKEG | — |
| MINES | ⊗ |
| CANCELLED | C. |

NOTES

400' surface rights reservation along the shores of all lakes and rivers.

Areas withdrawn from staking under Section 43 of the Mining Act (R.S.O.1970).

Order No.	File	Date	Disposition
43	w.60/74	188520	22/11/74 S.R.O.

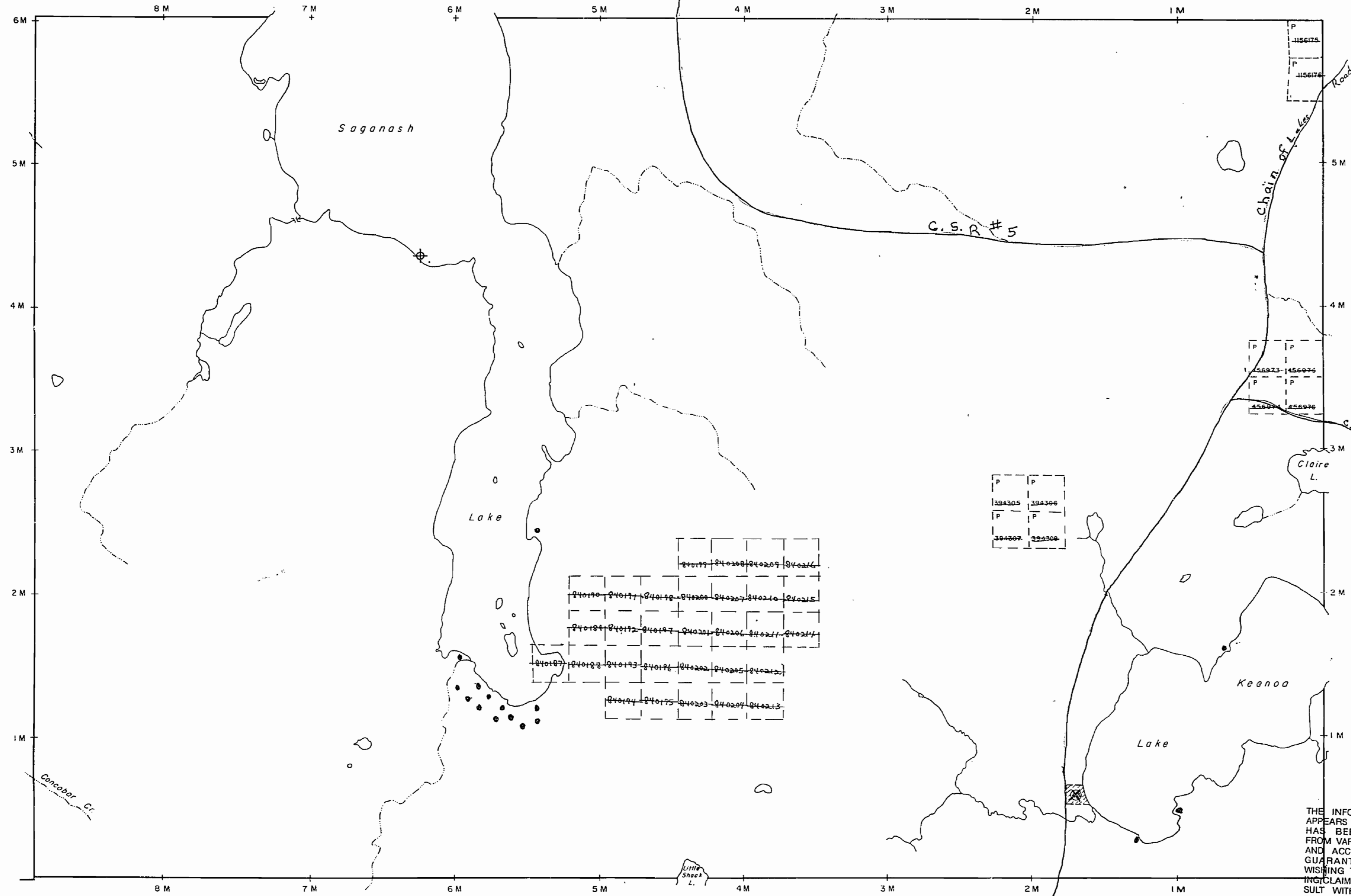
A. U. P.
⊕ REMOTE TOURIST CAMP

MAP REPLACED JULY 30, 1992 BY D.C.

Rec. Feb. 11/80

PLAN NO. **M. 806**

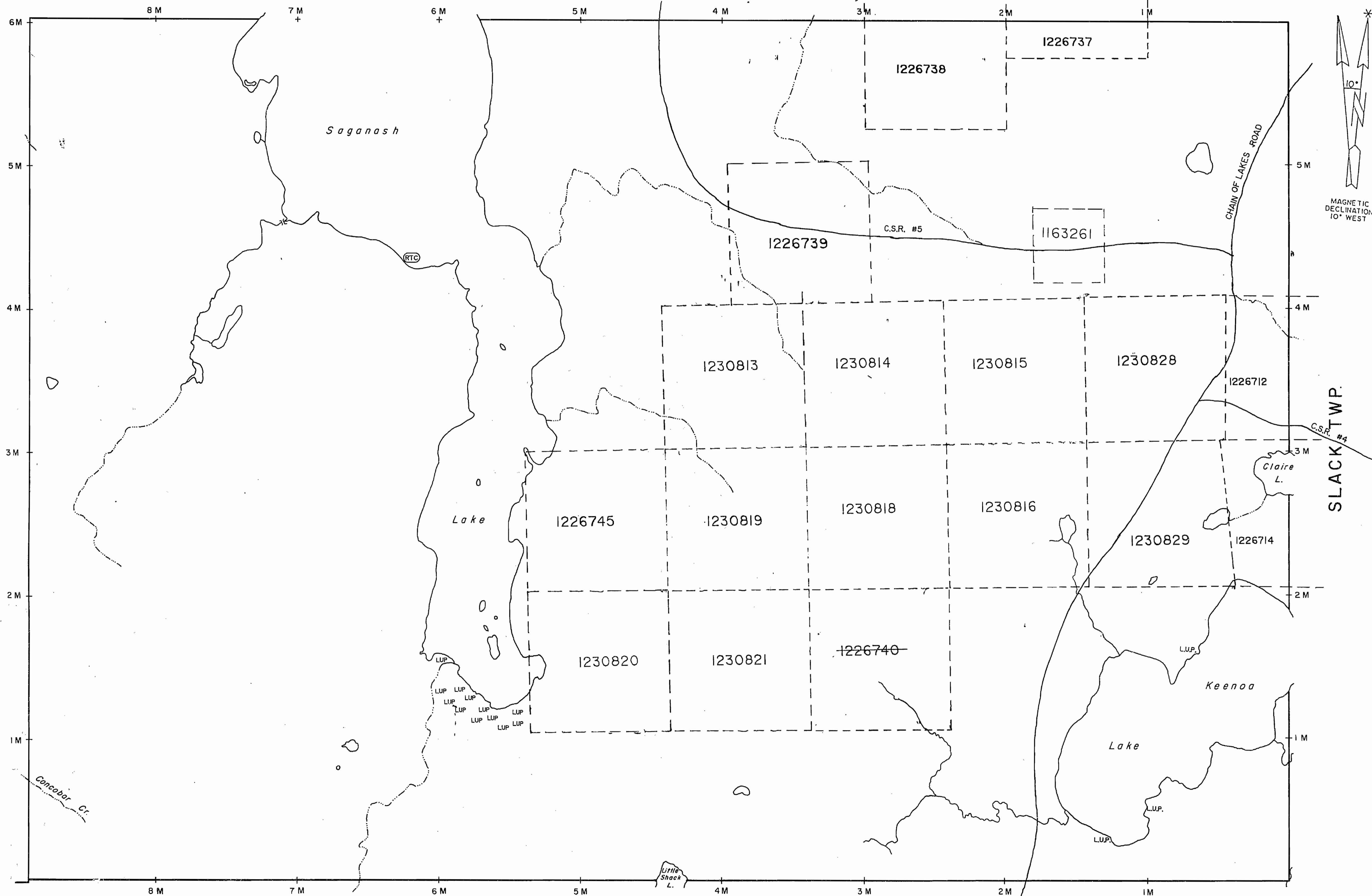
ONTARIO
MINISTRY OF NATURAL RESOURCES
SURVEYS AND MAPPING BRANCH



THE INFORMATION THAT APPEARS ON THIS MAP HAS BEEN COMPILED FROM VARIOUS SOURCES, AND ACCURACY IS NOT GUARANTEED. THOSE WISHING TO STAKE MINING CLAIMS SHOULD CONSULT WITH THE MINING RECORDER, MINISTRY OF NORTHERN DEVELOPMENT AND MINES, FOR ADDITIONAL INFORMATION ON THE STATUS OF THE LANDS SHOWN HEREON.

SEATON TWP.
M - 1096

STAPLES TWP.



SEATON TWP.

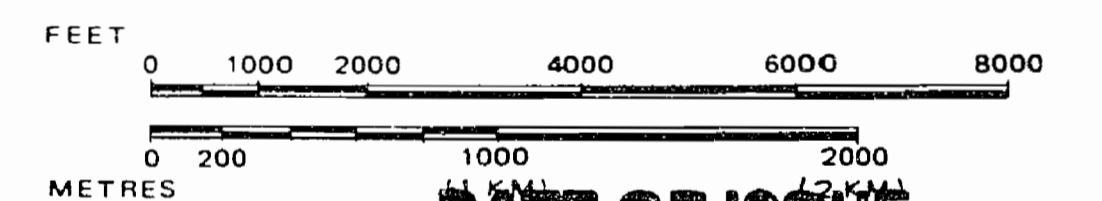
LEGEND

HIGHWAY AND ROUTE No.	
OTHER ROADS	
TRAILS	
SURVEYED LINES:	
TOWNSHIPS, BASE LINES, ETC.	
LOTS, MINING CLAIMS, PARCELS, ETC.	
UNSURVEYED LINES:	
LOT LINES	
PARCEL BOUNDARY	
MINING CLAIMS ETC.	
RAILWAY AND RIGHT OF WAY	
UTILITY LINES	
NON-PERENNIAL STREAM	
FLOODING OR FLOODING RIGHTS	
SUBDIVISION OR COMPOSITE PLAN	
RESERVATIONS	
ORIGINAL SHORELINE	
MARSH OR MUSKEG	
MINES	
TRAVERSE MONUMENT	

DISPOSITION OF CROWN LANDS

TYPE OF DOCUMENT	SYMBOL
PATENT, SURFACE & MINING RIGHTS	
" SURFACE RIGHTS ONLY	
" MINING RIGHTS ONLY	
LEASE, SURFACE & MINING RIGHTS	
" SURFACE RIGHTS ONLY	
" MINING RIGHTS ONLY	
LICENCE OF OCCUPATION	
ORDER-IN-COUNCIL	
RESERVATION	
CANCELLED	
SAND & GRAVEL	
LAND USE PERMIT - L.U.P.	
REMOTE TOURIST CAMP - (RTC)	

SCALE: 1 INCH = 40 CHAINS



DATE OF ISSUE

APR 14 1998

PROVINCIAL RECORDING OFFICE - SUDBURY

TOWNSHIP

FENTON

M.N.R. ADMINISTRATIVE DISTRICT

HEARST

MINING DIVISION

PORCUPINE

LAND TITLES / REGISTRY DIVISION

COCHRANE



Ministry of Natural Resources

Ministry of Northern Development and Mines

Date

Number

ACTIVATED JULY 30, 1992 BY P.D.

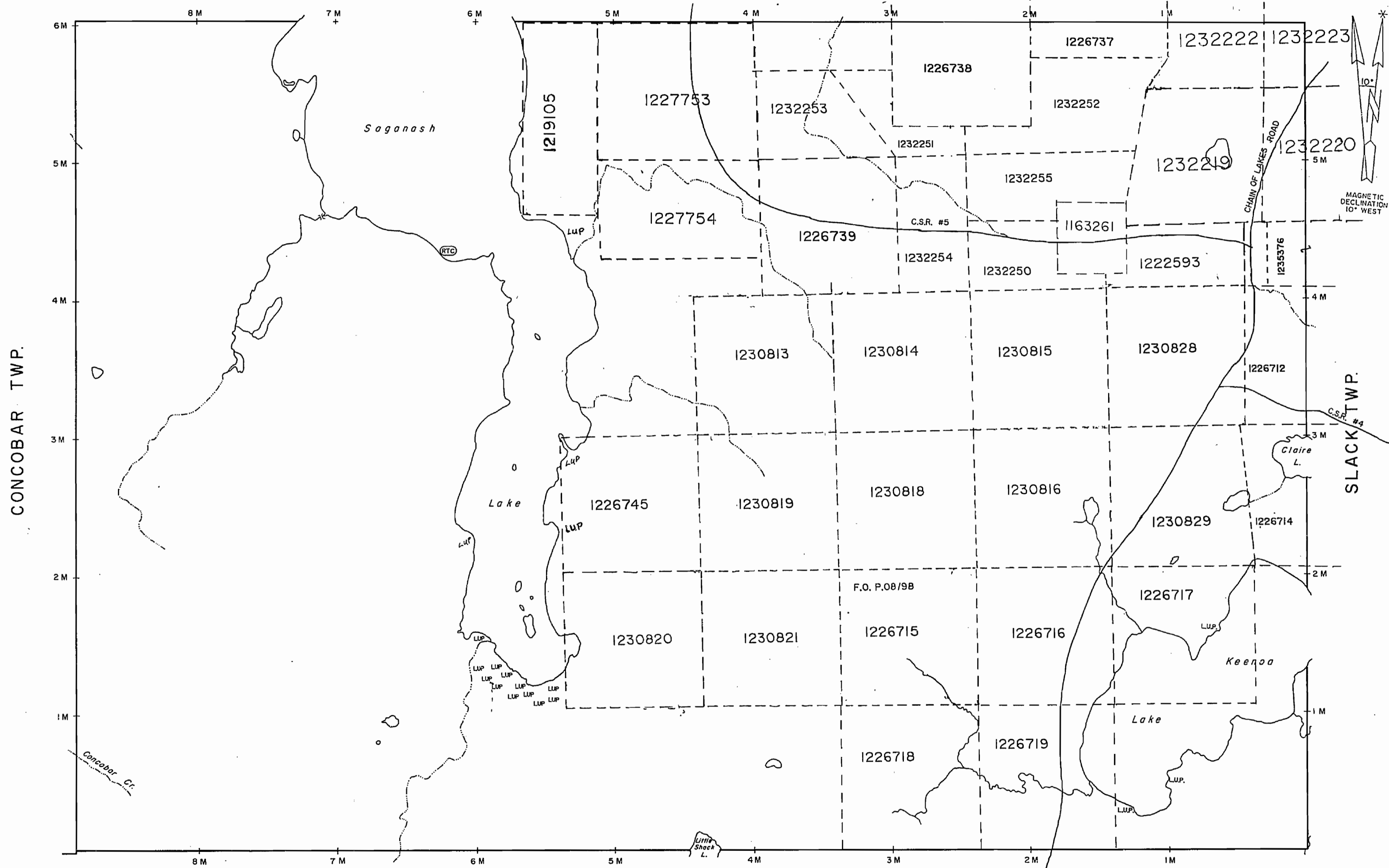
CHECKED BY D.C.

G-874

THE INFORMATION THAT APPEARS ON THIS MAP HAS BEEN COMPILED FROM VARIOUS SOURCES, AND ACCURACY IS NOT GUARANTEED. THOSE WISHING TO STAKE MINING CLAIMS SHOULD CONSULT WITH THE MINING

RECORDER, MINISTRY OF NORTHERN DEVELOPMENT AND MINES, FOR ADDITIONAL INFORMATION

STAPLES TWP.

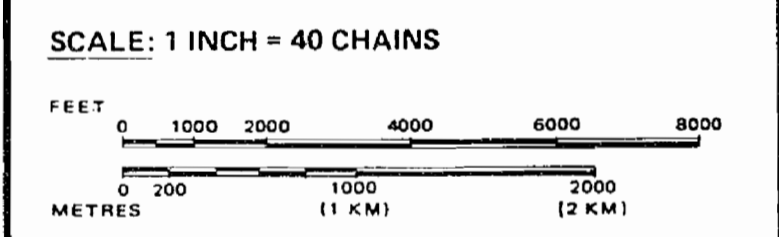


LEGEND

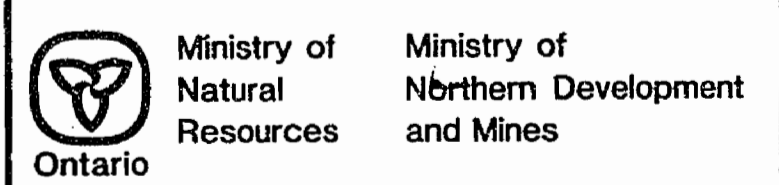
- HIGHWAY AND ROUTE No.
- OTHER ROADS
- TRAILS
- SURVEYED LINES:
 - TOWNSHIPS, BASE LINES, ETC.
 - LOTS, MINING CLAIMS, PARCELS, ETC.
- UNSURVEYED LINES:
 - LOT LINES
 - PARCEL BOUNDARY
 - MINING CLAIMS ETC.
- RAILWAY AND RIGHT OF WAY
- UTILITY LINES
- NON-PERENNIAL STREAM
- FLOODING OR FLOODING RIGHTS
- SUBDIVISION OR COMPOSITE PLAN
- RESERVATIONS
- ORIGINAL SHORELINE
- MARSH OR MUSKEG
- MINES
- TRAVERSE MONUMENT

DISPOSITION OF CROWN LANDS

TYPE OF DOCUMENT	SYMBOL
PATENT, SURFACE & MINING RIGHTS	
" SURFACE RIGHTS ONLY	
" MINING RIGHTS ONLY	
LEASE, SURFACE & MINING RIGHTS	
" SURFACE RIGHTS ONLY	
" MINING RIGHTS ONLY	
LICENCE OF OCCUPATION	
ORDER-IN-COUNCIL	
RESERVATION	
CANCELLED	
SAND & GRAVEL	
LAND USE PERMIT - L.U.P.	
REMOTE TOURIST CAMP - RTC	



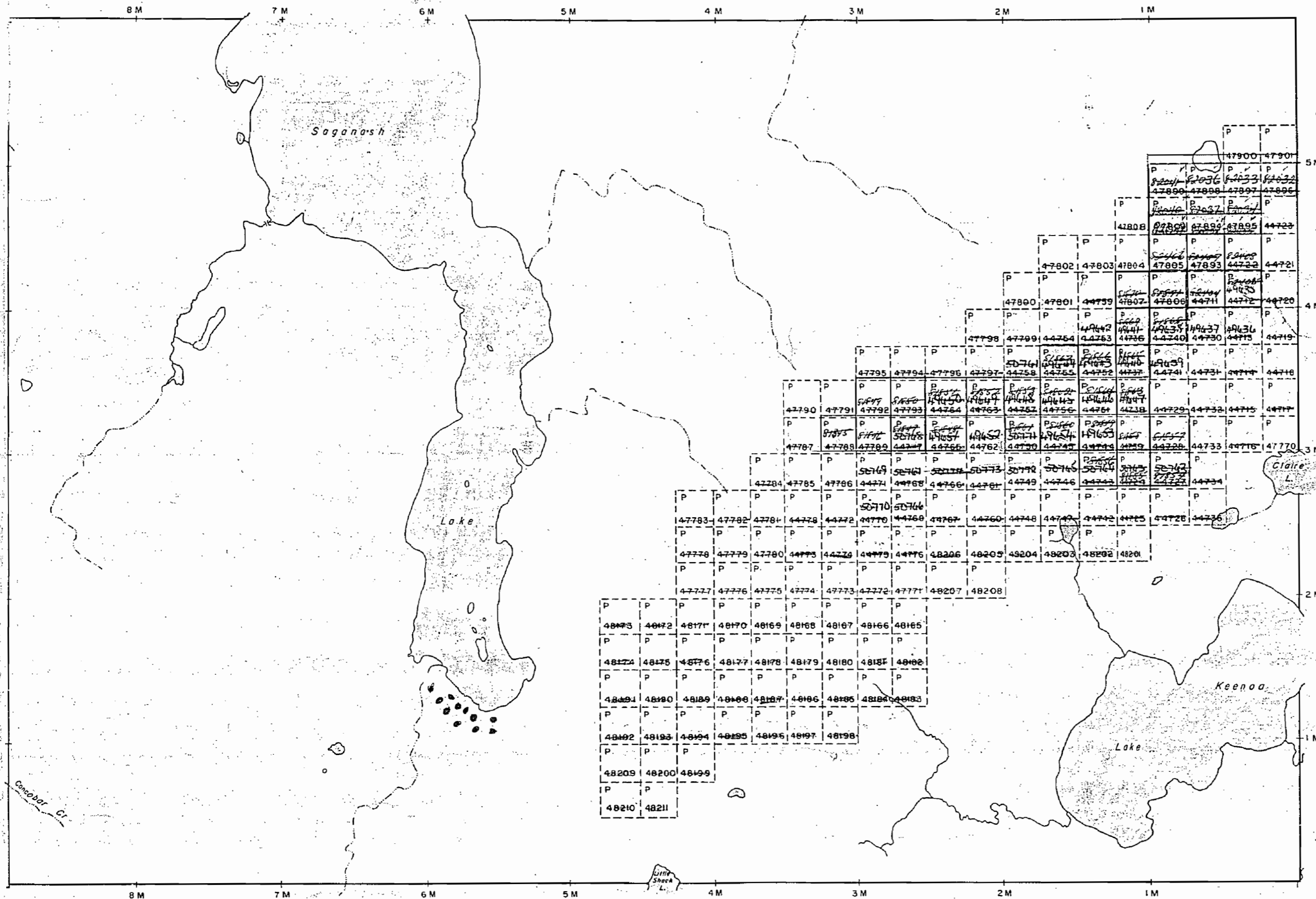
TOWNSHIP
FENTON
 M.N.R. ADMINISTRATIVE DISTRICT
 HEARST
 MINING DIVISION
 PORCUPINE
 LAND TITLES / REGISTRY DIVISION
 COCHRANE



Date: ACTIVATED JULY 30, 1992 BY P.D. CHECKED BY D.C.
 Number: **G-874**

THE INFORMATION THAT APPEARS ON THIS MAP HAS BEEN COMPILED FROM VARIOUS SOURCES, AND ACCURACY IS NOT GUARANTEED. THOSE WISHING TO STAKE MINING CLAIMS SHOULD CONSULT WITH THE MINING RECORDER, MINISTRY OF NORTHERN DEVELOPMENT AND MINES, FOR ADDITIONAL INFORMATION ON THE STATUS OF THE LANDS SHOWN HEREON.

STAPLES TWP.
M - 1125



SEATON TWP.
M - 1096

THE TOWNSHIP
OF

FENTON

DISTRICT OF
COCHRANE

PORCUPINE
MINING DIVISION

SCALE: 1-INCH = 40 CHAINS

LEGEND

- PATENTED LAND Ⓟ
- CROWN LAND SALE C.S.
- LEASES Ⓛ
- LOCATED LAND Loc.
- LICENSE OF OCCUPATION L.O.
- MINING RIGHTS ONLY M.R.O.
- SURFACE RIGHTS ONLY S.R.O.
- ROADS —
- IMPROVED ROADS —
- KING'S HIGHWAYS —
- RAILWAYS —
- POWER LINES —
- MARSH OR MUSKEG —
- MINES *
- CANCELLED C.

NOTES

400' Reserve around all Lakes & Rivers to Dept. of Lands & Forests:

• Rent Use Permit

PLAN NO. M. 806

DEPARTMENT OF MINES

— ONTARIO —

908

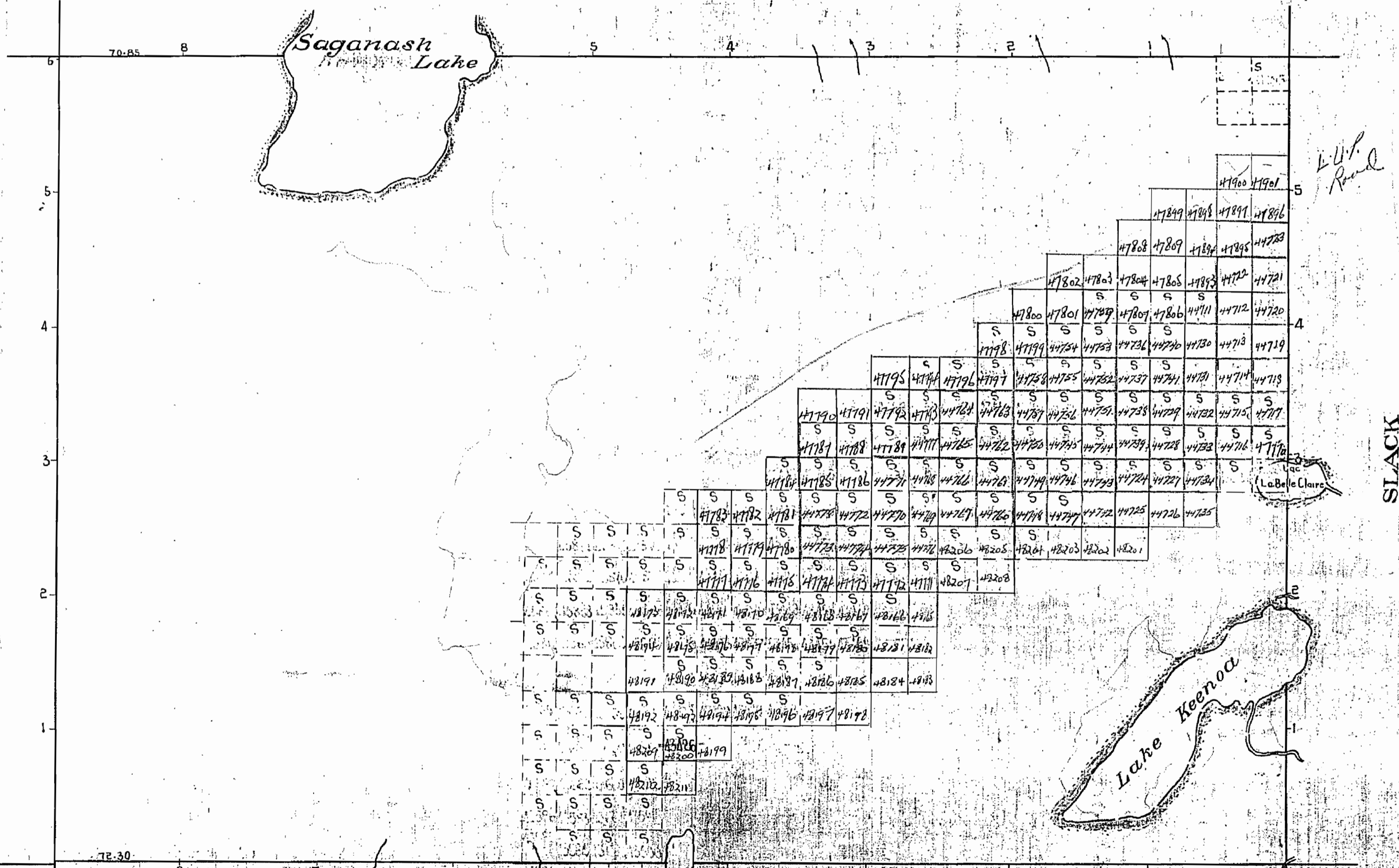
FENTON

DISTRICT OF SUDBURY
PORCUPINE MINING DIVISION
SCALE 40 CHAINS TO ONE INCH

M-806

*L.U.P. Road 66'
Reservation 66'
Road and side
300' on each side
66' height of
3/4-1-1905*

STAPLES



Note: Reservation of the surface rights over a strip 100ft in width and perpendicular to the shore line of Saganash Lake.

SECTION

908

EENTON

DISTRICT OF SUDBURY

M 806

SCALE 40 CHAINS TO ONE INCH

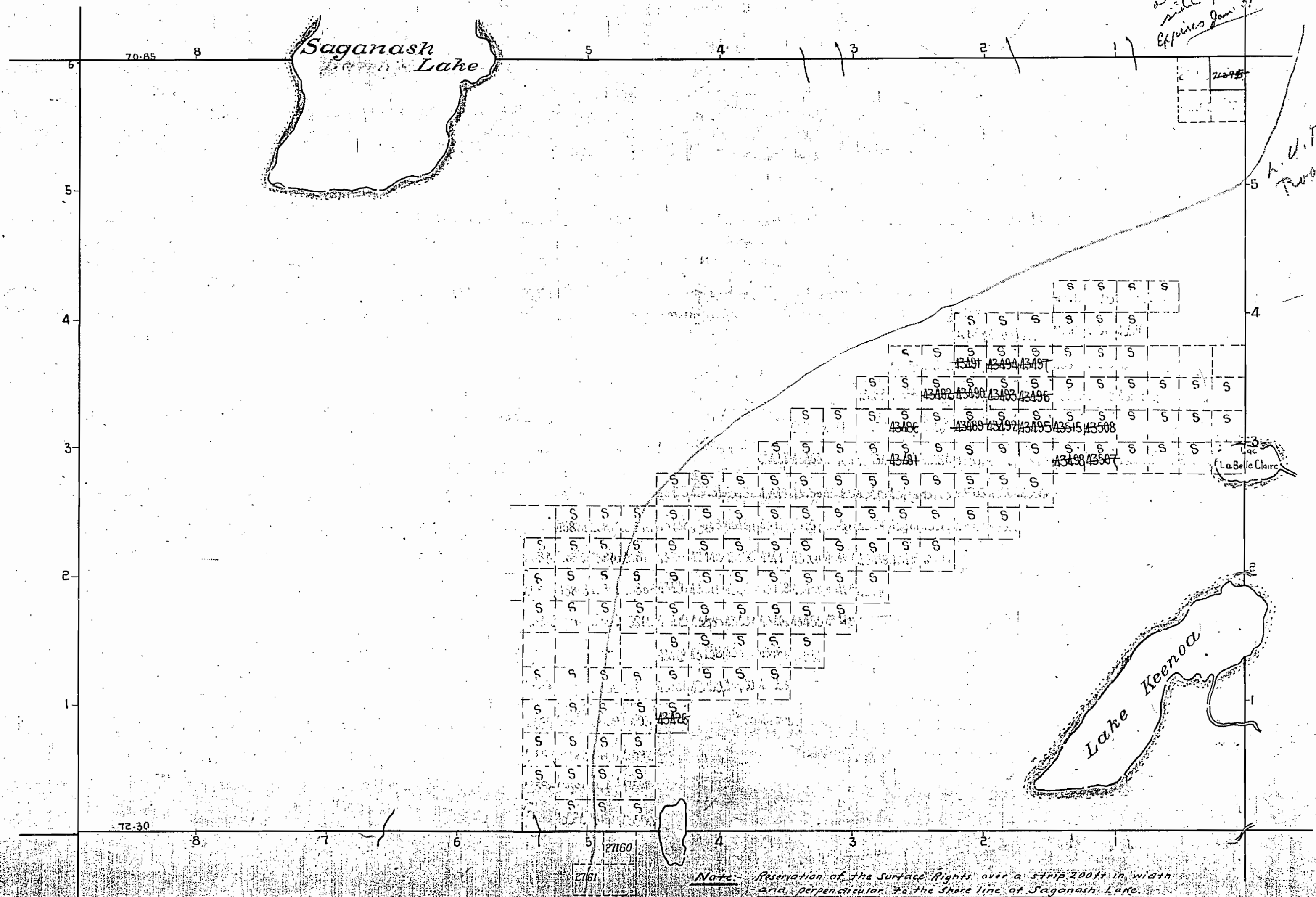
STAPLES

L.V.P. Road 405-8
Reservation 66' for road
and additional 300' on each
side of 66' first right of way
Exp. Jan 3/83

L.V.P. Road

CONCOBAR

SLACK



Note: Reservation of the Surface Rights over a strip 200ft in width and perpendicular to the shore line of Saganash Lake and others, shown hereon thus

SEATON

806

STAPLES TWP.
M - 1125

M - 1125

THE TOWNSHIP
OF

FENTON

DISTRICT OF
COCHRANE

PORCUPINE
MINING DIVISION

SCALE: 1-INCH=40 CHAINS

LEGEND

PATENTED LAND	⊙
CROWN LAND SALE	C.S.
LEASES	⊖
LOCATED LAND	Loc.
LICENSE OF OCCUPATION	L.O.
MINING RIGHTS ONLY	M.R.O.
SURFACE RIGHTS ONLY	S.R.O.
ROADS	—
IMPROVED ROADS	—
KING'S HIGHWAYS	—
RAILWAYS	—
POWER LINES	—
MARSH OR MUSKEG	—
MINES	⊗
CANCELLED	C.

NOTES

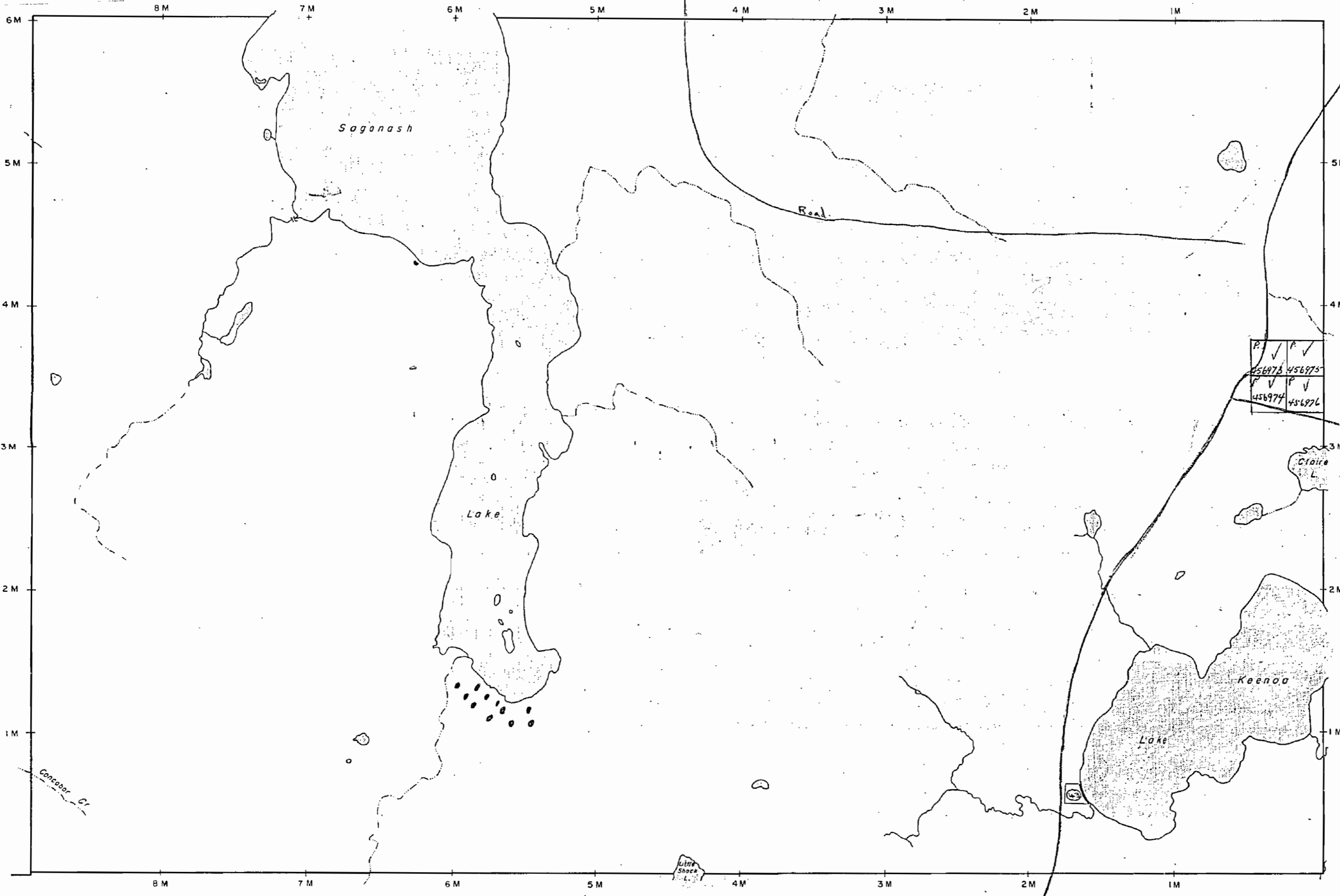
• Land Use Permit
 (43) S.R.O. withdrawn Nov. 22/74

RECEIVED
 DEC 10 1973
 7 8 9 10 11 12 13 14 15 16

PLAN NO. **M. 806**

ONTARIO
MINISTRY OF NATURAL RESOURCES
SURVEYS AND MAPPING BRANCH

CONCOBAR TWP.

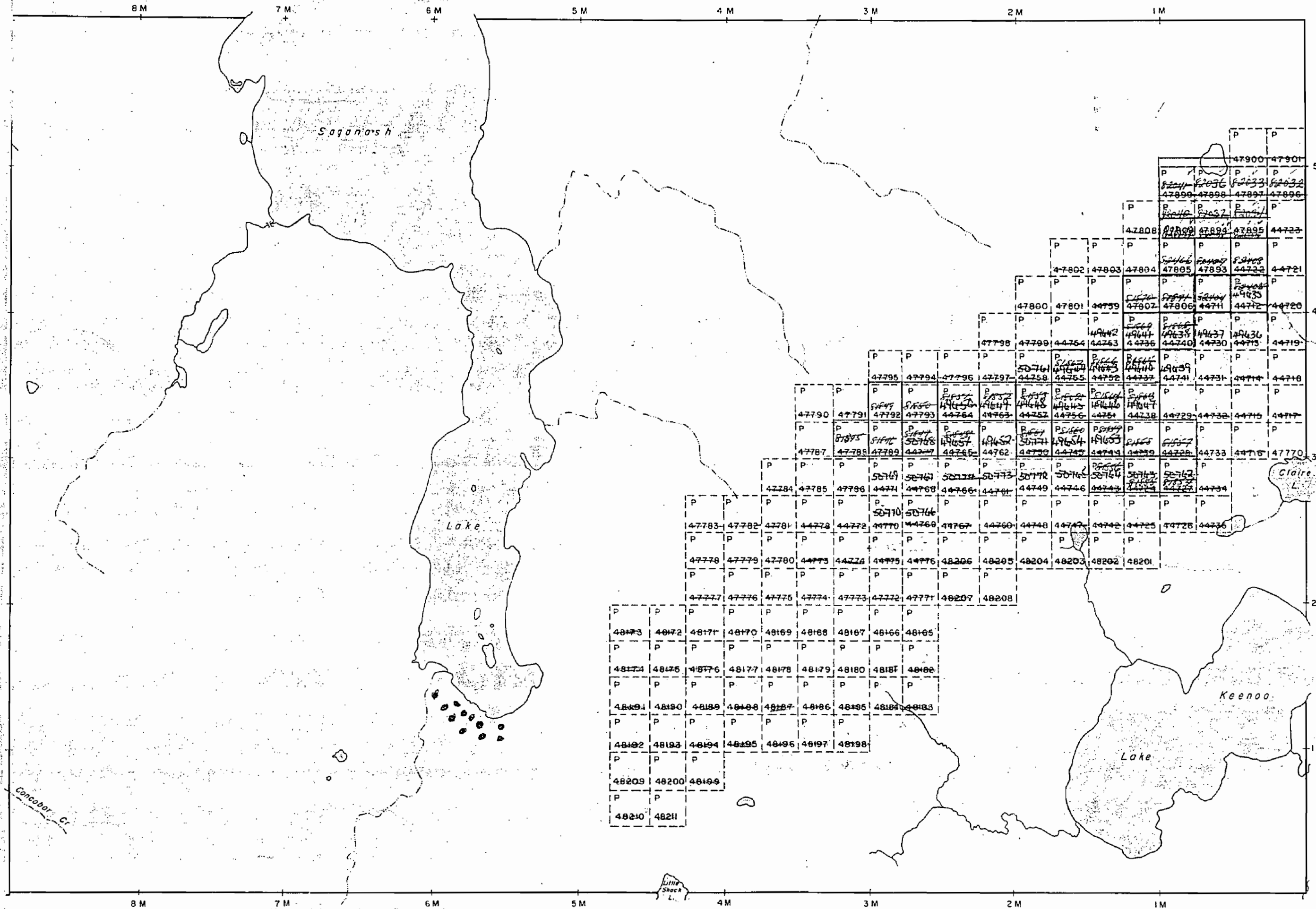


SEATON TWP.
M - 1096

SLACK TWP.
M - 117

806

STAPLES TWP.
M - 1125



SEATON TWP.
M - 1096

THE TOWNSHIP
OF

FENTON

DISTRICT OF
COCHRANE

PORCUPINE
MINING DIVISION

SCALE: 1-INCH = 40 CHAINS

LEGEND

- PATENTED LAND Ⓟ
- CROWN LAND SALE C.S.
- LEASES Ⓛ
- LOCATED LAND Loc.
- LICENSE OF OCCUPATION L.O.
- MINING RIGHTS ONLY M.R.O.
- SURFACE RIGHTS ONLY S.R.O.
- ROADS — — — — —
- IMPROVED ROADS — — — — —
- KING'S HIGHWAYS — — — — —
- RAILWAYS — — — — —
- POWER LINES — — — — —
- MARSH OR MUSKEG — — — — —
- MINES X
- CANCELLED C.

NOTES

400' Reserve around all Lakes & Rivers to Dept. of Lands & Forests:

• *Land Use Permit*

PLAN NO. **M. 806**

DEPARTMENT OF MINES

— ONTARIO —

908

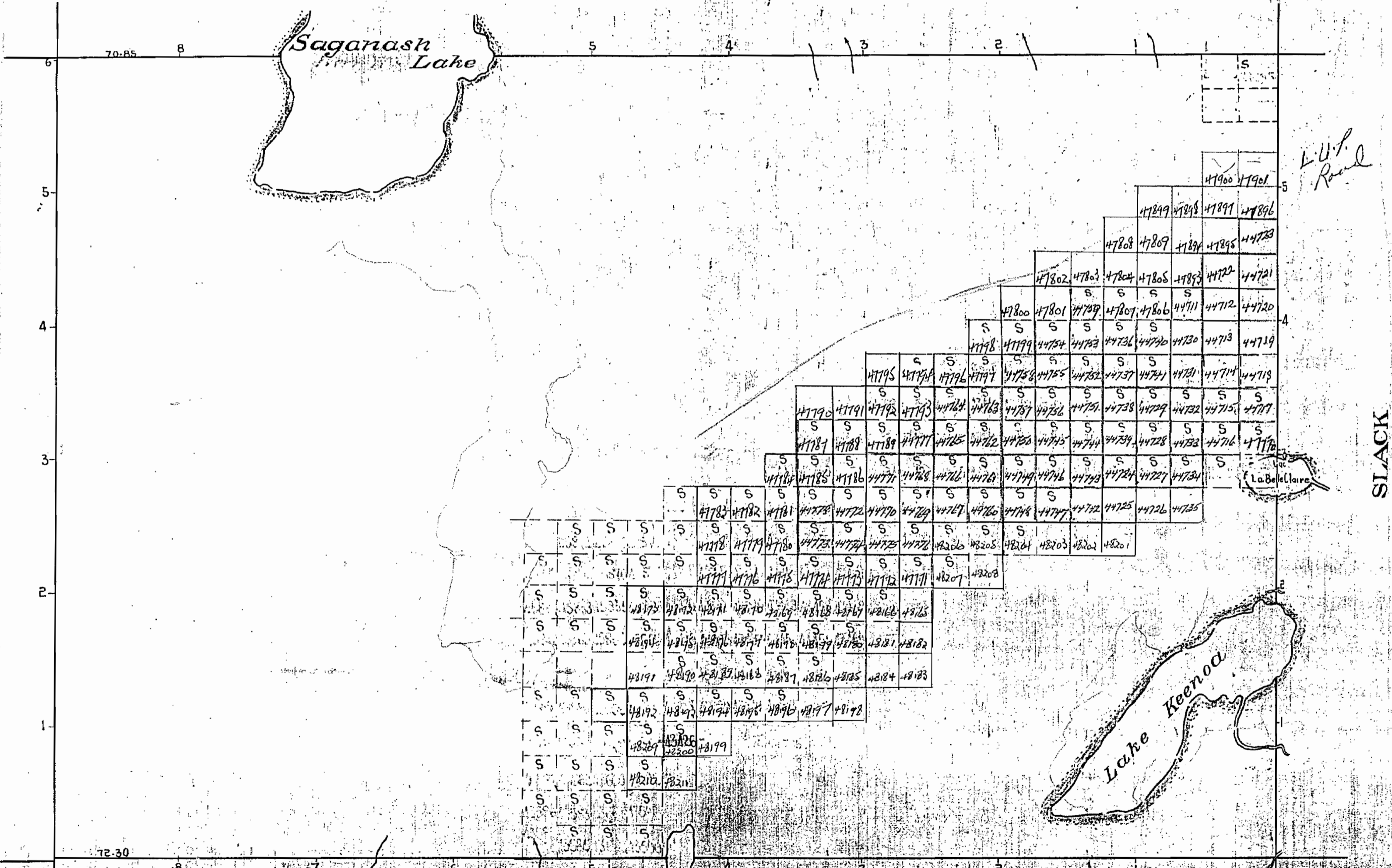
FENTON

DISTRICT OF SUDBURY
PORCUPINE MINING DIVISION
SCALE 40 CHAINS TO ONE INCH

M. S. G. L.

*L. U. P. Road
Reservations 66
Road and water
300' on each side
66' height of dam
P. J. Lewis Jan 31*

STAPLES



Notes: Reservation of the surface rights over a strip of land in width 200' perpendicular to the shore line of Saganash Lake. One of the reservations hereon show...

908

EENTON

DISTRICT OF SUDBURY *M 806*

SCALE 40 CHAINS TO ONE INCH

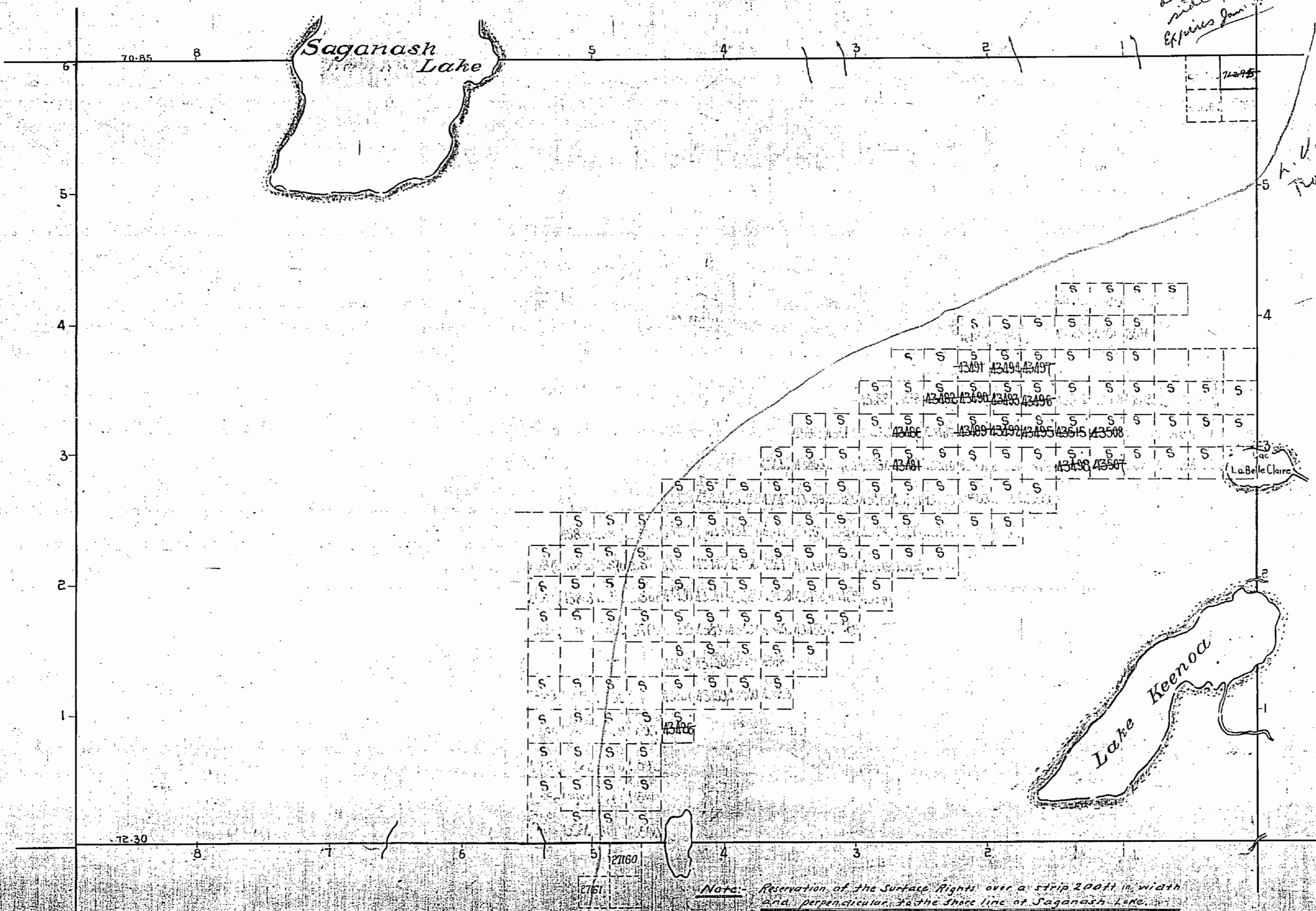
STAPLES

*L.V.P. Road 4¹⁵-8
Reservation 56' for road
and additional 300' on each
side of 66' front right of way
Expires Jan 3/53*

*L.V.P.
Road*

CONCOBAR

SLACK



Note: Reservation of the Surface Rights over a strip 200ft in width and perpendicular to the shore line of Saganash Lake, and others, shown hereon thus

SEATON