

A.C. AND H.B. RLY. LAND GRANT.
PLAN OF

TWP. 27. R. 2 ^{Fiddler} **46-2759**
SAULT STE. MARIE MINING DIVISION.
DISTRICT OF ALGOMA.

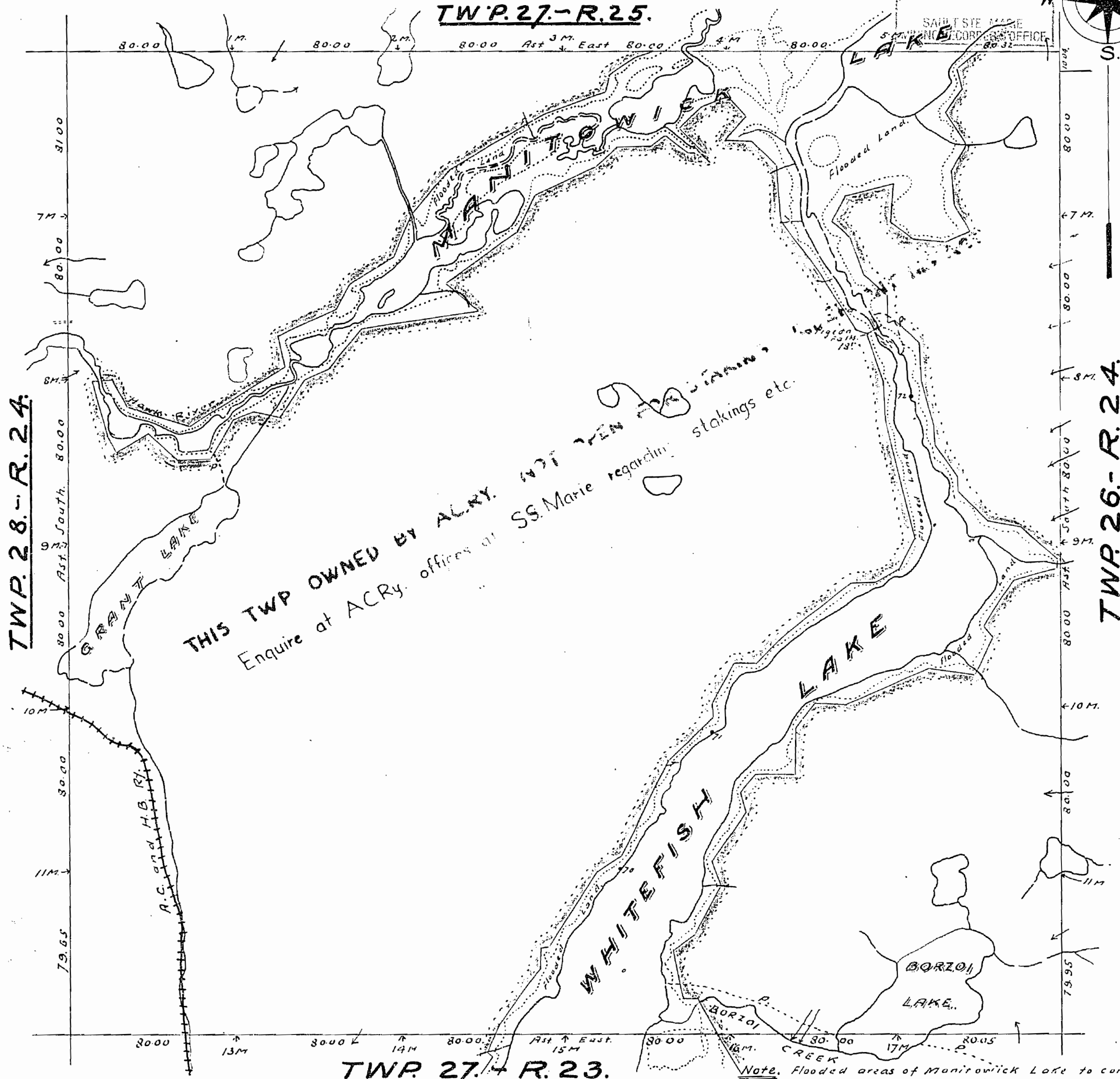
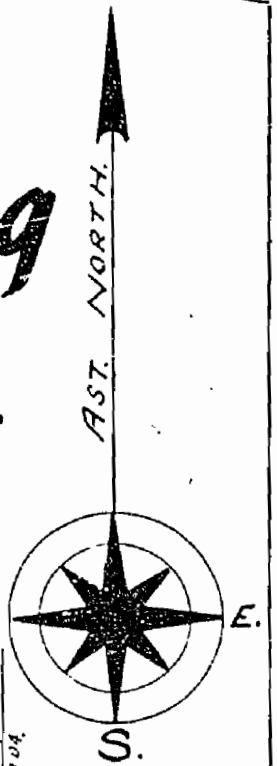
Scale, 40 chains to an inch.

TWP. 27.-R. 25.

DATE OF ISSUE

OCT 21 1958

SAULT STE. MARIE
 MINING DIVISION
 RECORDS OFFICE



TWP. 28.-R. 24.

TWP. 26.-R. 24.

TWP. 27.-R. 23.

Surface reservations 200' wide by Dept. of L. & A.
 Shown hereon thus ~~~~~

Note. Flooded areas of Manitowick Lake to contour 1019.65ft shown thus ~~~~~
 Flooded areas of Whitefish Lake to contour 1020 ft. shown thus ~~~~~
 Arbitrary boundaries shown thus ~~~~~
 Railway, from A.C. & H.B. Ry. R/W Plan 1308.

REFERENCES

AREAS WITHDRAWN FROM DISPOSITION

M.R.O. - MINING RIGHTS ONLY
S.R.O. - SURFACE RIGHTS ONLY
M.+S. - MINING AND SURFACE RIGHTS

Description	Order No.	Date	Disposition	File
-------------	-----------	------	-------------	------

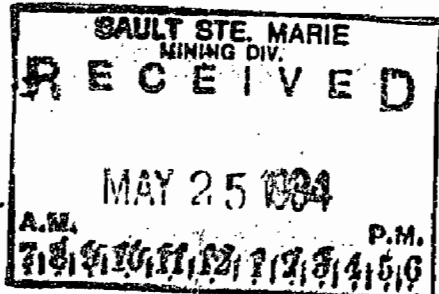
AREAS ADMINISTERED UNDER THE ONTARIO MINING ACT ARE SHOWN THUS

FOR STATUS OF THE REMAINDER OF THIS TOWNSHIP ENQUIRE AT THE ALGOMA CENTRAL RAILWAY OFFICES- SAULT STE. MARIE, ONTARIO.

W.P.L.A. No. 54 COVERS FLOODING RIGHTS TO CONTOUR ELEV. 1028' (JC 438, JC 447) TO GREAT LAKES POWER CORP. FILE 148239.

The 1975 Magnetic Bearing Approx. 5° W. Annual Change increasing 2'

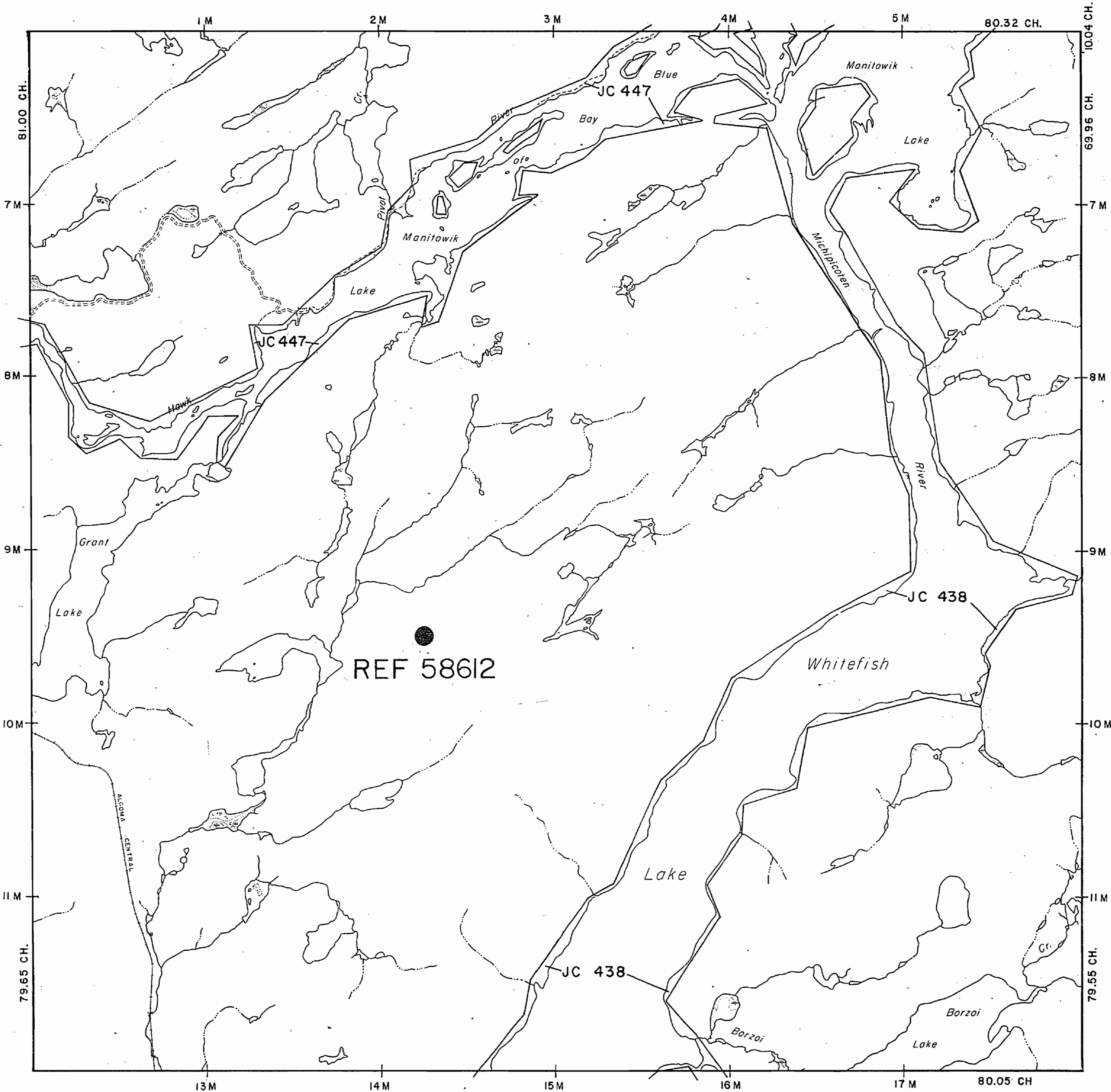
THE INFORMATION THAT APPEARS ON THIS MAP HAS BEEN COMPILED FROM VARIOUS SOURCES, AND ACCURACY IS NOT GUARANTEED. THOSE WISHING TO TAKE MINING CLAIMS SHOULD CONSULT WITH THE MINING RECORDER, MINISTRY OF NORTHERN DEVELOPMENT AND MINES, FOR ADDITIONAL INFORMATION ON THE STATUS OF THE LANDS SHOWN HEREON.



COWIE TWP. G-2397

ESQUEGA TWP. G-2758

ISAAC TWP. G-2773



MANESS TWP. G-2998

LEGEND

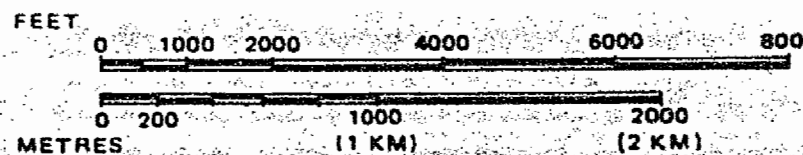
- HIGHWAY AND ROUTE No.
- OTHER ROADS
- TRAILS
- SURVEYED LINES:
 - TOWNSHIPS, BASE LINES, ETC.
 - LOTS, MINING CLAIMS, PARCELS, ETC.
- UNSURVEYED LINES:
 - LOT LINES
 - PARCEL BOUNDARY
 - MINING CLAIMS ETC.
- RAILWAY AND RIGHT OF WAY
- UTILITY LINES
- NON-PERENNIAL STREAM
- FLOODING OR FLOODING RIGHTS
- SUBDIVISION OR COMPOSITE PLAN
- RESERVATIONS
- ORIGINAL SHORELINE
- MARSH OR MUSKEG
- MINES
- TRAVERSE MONUMENT

DISPOSITION OF CROWN LANDS

TYPE OF DOCUMENT	SYMBOL
PATENT, SURFACE & MINING RIGHTS	●
" SURFACE RIGHTS ONLY	○
" MINING RIGHTS ONLY	○
LEASE, SURFACE & MINING RIGHTS	■
" SURFACE RIGHTS ONLY	■
" MINING RIGHTS ONLY	■
LICENCE OF OCCUPATION	○
ORDER-IN-COUNCIL	○
RESERVATION	○
CANCELLED	○
SAND & GRAVEL	○

NOTE: MINING RIGHTS IN PARCELS PATENTED PRIOR TO MAY 6, 1913, VESTED IN ORIGINAL PATENTEE BY THE PUBLIC LANDS ACT, R.S.O. 1970, CHAP. 380, SEC. 63, SUBSEC. 1.

SCALE: 1 INCH = 40 CHAINS



TOWNSHIP

FIDDLER

M.N.R. ADMINISTRATIVE DISTRICT
WAWA
MINING DIVISION
SAULT STE. MARIE
LAND TITLES / REGISTRY DIVISION
ALGOMA



Ministry of Natural Resources
Land Management Branch

Date FEBRUARY 1984

Number

G-2759