

476

Hartle Twp.

THE TOWNSHIP OF
OF
FLETT

DISTRICT OF NIPISSING
TIMISKAMING
MINING DIVISION

SCALE: 1-INCH=40 CHAINS

LEGEND

- PATENTED LAND (P)
- CROWN LAND SALE C.S.
- LEASES (L)
- LOCATED LAND Loc.
- LICENSE OF OCCUPATION L.O.
- MINING RIGHTS ONLY M.R.O.
- SURFACE RIGHTS ONLY S.R.O.
- ROADS [Symbol]
- IMPROVED ROADS [Symbol]
- KING'S HIGHWAYS [Symbol]
- RAILWAYS [Symbol]
- POWER LINES [Symbol]
- MARSH OR MUSKEG [Symbol]
- MINES [Symbol]
- CANCELLED C.

NOTES

400' Surface rights reservation around all lakes and rivers.

L.O. 6065 Covers Flooding Rights H.E.P.C. Of Ontario. File 46192.

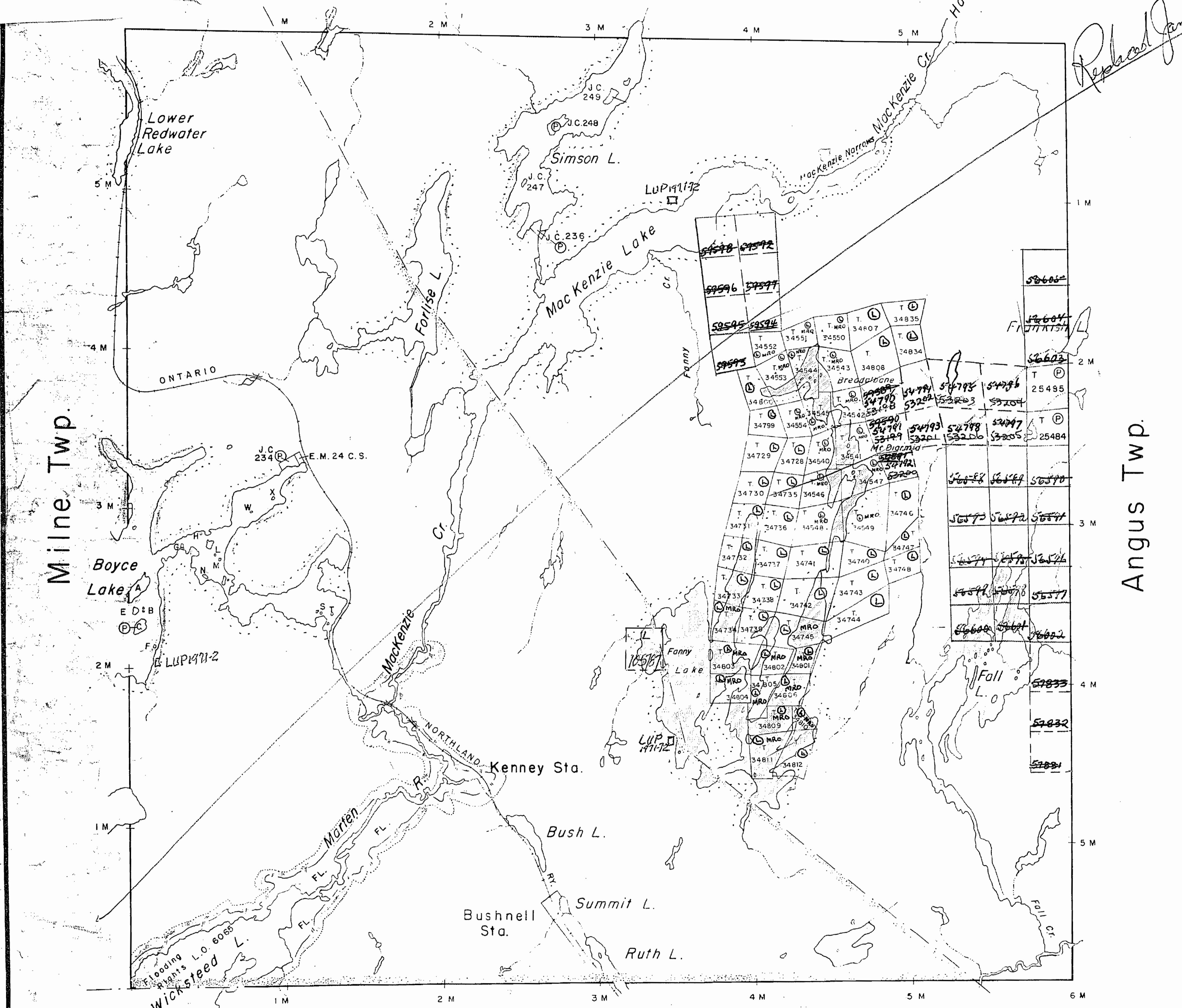
Approximate location of Timagami Provincial Forest shown thus: [Symbol]



PLAN NO.- M. 476

DEPARTMENT OF MINES

— ONTARIO —



J.V.K.

* Oct 1982

THE TOWNSHIP OF
OF
FLETT

DISTRICT OF NIFISSING
SUDBURY
MINING DIVISION

SCALE: 1-INCH=40 CHAINS

LEGEND

| | |
|------------------------|--------|
| PATENTED LAND | Ⓟ |
| CROWN LAND SALE LEASES | Ⓞ |
| LOCATED LAND | Ⓛ |
| LICENSE OF OCCUPATION | Ⓛ.o. |
| MINING RIGHTS ONLY | M.R.O. |
| SURFACE RIGHTS ONLY | S.R.O. |
| ROADS | — |
| IMPROVED ROADS | — |
| KING'S HIGHWAYS | — |
| RAILWAYS | — |
| POWER LINES | — |
| MARSH OR MUSKEG | — |
| MINES | — |
| CANCELLED | — |

NOTES

400' Surface rights reservation around all lakes and rivers.

L.O. 6065 Covers Flooding Rights H.E.P.C. Of Ontario. File 46192.

Approximate location of Timagami Provincial Forest shown thus: —

Wicksteed Lake: Lands subject to flooding. Withdrawn from disposition July 20, 1970, File 160707, vol. 2.

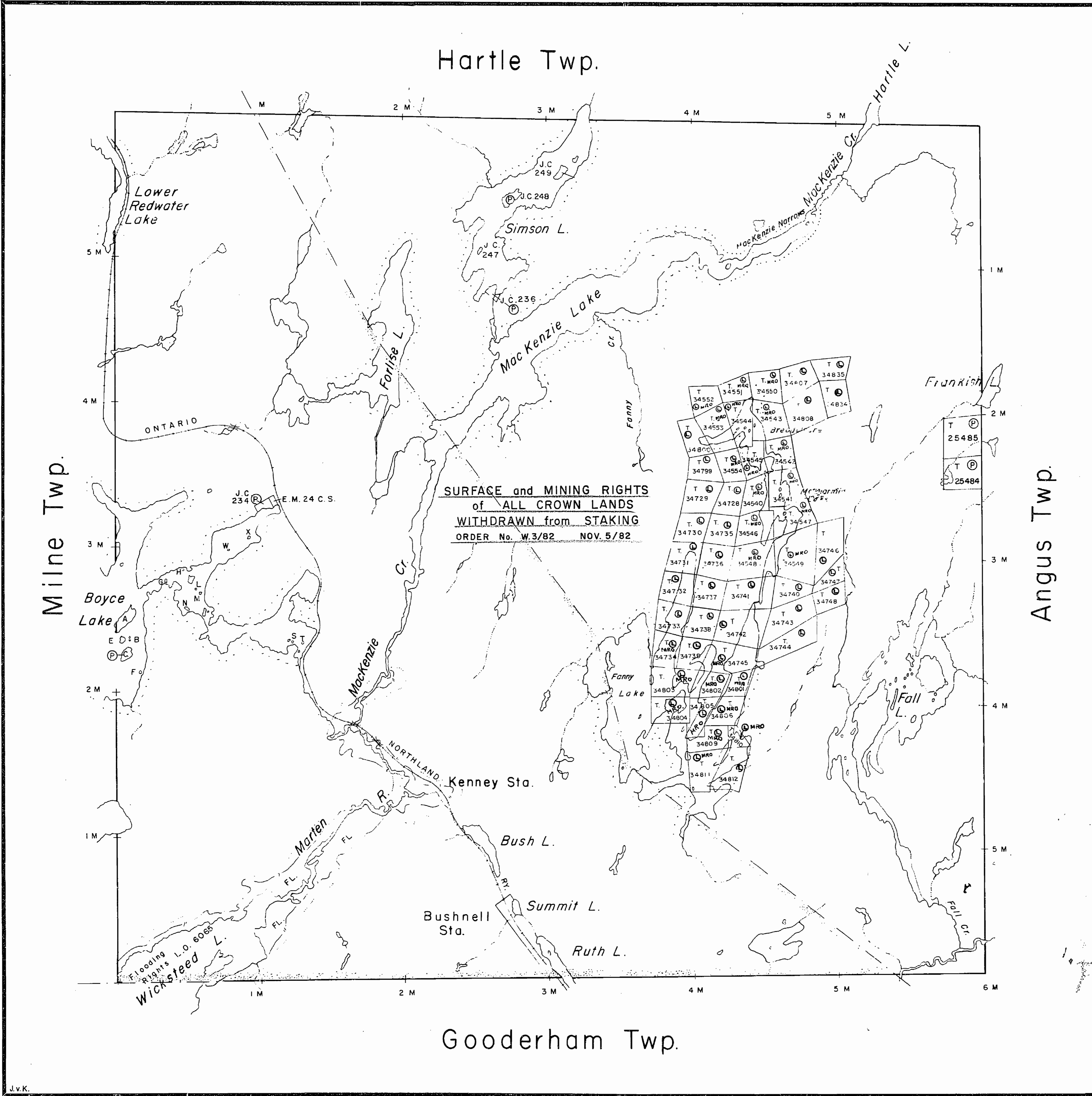
Township closed to staking effective May 8 '78, Sec.38(f) of Mining Act.

* IN SERVICE 1983 10 01 - J.W.

FLETT

PLAN NO.- M.476

ONTARIO
MINISTRY OF NATURAL RESOURCES
SURVEYS AND MAPPING BRANCH



M.476

M.476

FLETT TWP

FLETT TWP

M.476

M.476

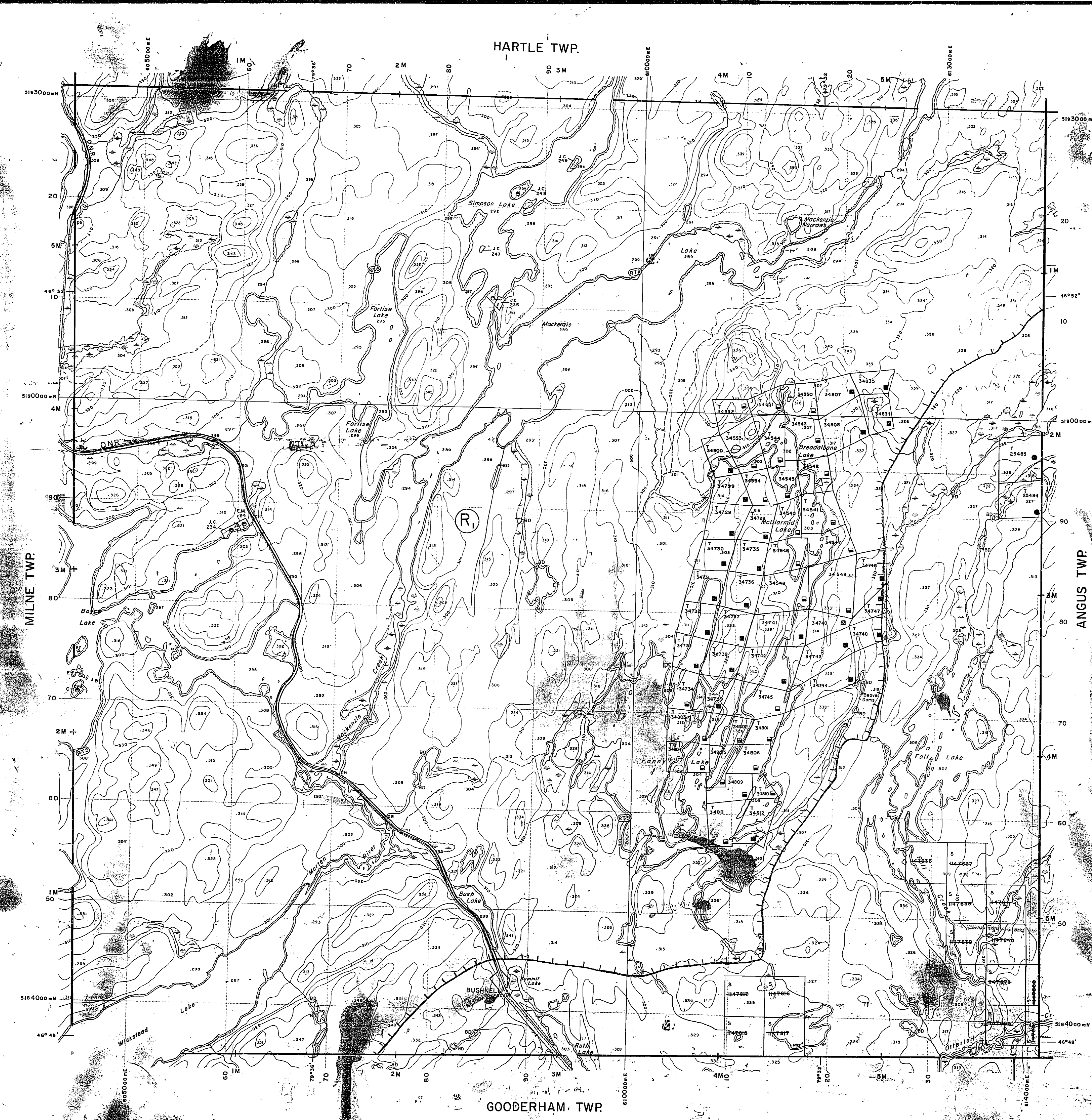
MAP SYMBOLOLOGY

| | |
|--------------------------------------|---------------------------------|
| Aerial Cableway | Pipeline |
| Boundary | Railroad |
| International | Single Track |
| District, Township | Double Track |
| Indian Reserve | Abandonment |
| Approximate | Terracing |
| Lot, Concession | Road |
| Approximate | Highway, County |
| Park Boundary | Terracing |
| Bridge | Access (road of doubtful |
| Road, Railroad | maintenance or |
| Building | unimproved driveway) |
| Chimney | Trail, Back Road |
| Cliff, Pit, Pile | (partoon, utility) |
| Contours | Rapids |
| Interpreted | Double line river |
| Approximate | with multiple rapids |
| Depression | Double line river |
| Control Points | with multiple rapids |
| Horizontal | Reservoir |
| Vertical | River, Stream, Canal |
| Culvert | Approximate |
| Falls | Direction of flow |
| Depth line river | Rock |
| Fence, Hedge, Wall | Significant |
| Feature Outline | Spot Elevation |
| (Construction Features, etc.) | (from elevation) |
| Flooded Land | Prisms |
| Lock | Tower |
| Marsh or Swamp | Transmission Line |
| Mast | Pole |
| Mine Head Frame | Prism |
| Outcrop | Tunnel |
| | Utility Poles |
| | Wharf, Dock, Pier |
| | Wooded Area |

AREAS WITHDRAWN FROM DISPOSITION

| | | | | |
|---|------------------|-------------|--------------------|-------------|
| M.R.O. - MINING RIGHTS ONLY | | | | |
| S.R.O. - SURFACE RIGHTS ONLY | | | | |
| M.+S. - MINING AND SURFACE RIGHTS | | | | |
| Description | Order No. | Date | Disposition | File |
| Sec 36/80 | W 3/82 | Nov. 5/82 | M.+S. | |
| Part of order No 3182 REOPENED by order | | | | |
| O.M. 01/90 NER effective April 3/1990 at 7:00 AM EAT. | | | | |

NOTE:
"THIS MAP SHOWS THE APPROXIMATE LOCATION OF THE BOUNDARIES OF THE AREA WHICH IS THE SUBJECT OF CURRENT LITIGATION, THE EXACT LOCATION WILL BE SHOWN FOLLOWING CONFIRMATION BY THE PARTIES TO THE ACTION"



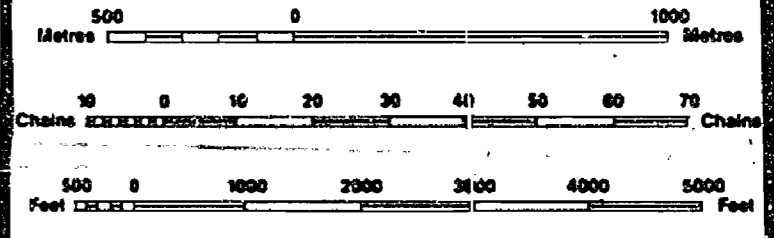
LEGEND

| | |
|---|--|
| HIGHWAY AND ROUTE No. | |
| OTHER ROADS | |
| TRAILS | |
| SURVEYED LINES: | |
| TOWNSHIPS, BASE LINES, ETC. | |
| LOTS, MINING CLAIMS, PARCELS, ETC. | |
| UNSURVEYED LINES: | |
| LOT LINES | |
| PARCEL BOUNDARY | |
| MINING CLAIMS ETC. | |
| RAILWAY AND RIGHT OF WAY | |
| UTILITY LINES | |
| NON-PERENNIAL STREAM | |
| FLOODING OR FLOODING RIGHTS | |
| SUBDIVISION OR COMPOSITE PLAN | |
| RESERVATIONS | |
| ORIGINAL SHORELINE | |
| MARSH OR MUSKIE | |
| MINES | |
| TRAVERSE MONUMENT | |

DISPOSITION OF CROWN LANDS

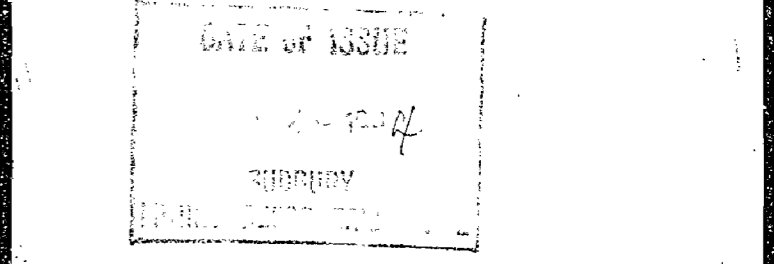
| | |
|--|---------------|
| TYPE OF DOCUMENT | SYMBOL |
| PATENT, SURFACE & MINING RIGHTS | |
| SURFACE RIGHTS ONLY | |
| MINING RIGHTS ONLY | |
| LEASE, SURFACE & MINING RIGHTS | |
| SURFACE RIGHTS ONLY | |
| MINING RIGHTS ONLY | |
| LICENCE OF OCCUPATION | |
| ORDER-IN-COUNCIL | |
| RESERVATION | |
| CANCELLED | |
| SAND & GRAVEL | |

NOTE: MINING RIGHTS IN PARCELS PATENTED PRIOR TO MAY 5, 1913, VESTED IN ORIGINAL PATENTEE BY THE PUBLIC LANDS ACT, R.S.O. 1970, CHAP. 300, SEC. 63, SUBSEC. 1.



SCALE 1:20 000
GRID ZONE 17

REMOTE TOURIST SET-UP



THE INFORMATION THAT APPEARS ON THIS MAP HAS BEEN COMPILED FROM VARIOUS SOURCES, AND ACCURACY IS NOT GUARANTEED. THOSE WISHING TO STAKE MINING CLAIMS SHOULD CONSULT WITH THE MINING RECORDER, MINISTRY OF NORTHERN DEVELOPMENT AND MINES, FOR ADDITIONAL INFORMATION CONCERNING THE STATUS OF THE LANDS SHOWN HEREON.

TOWNSHIP
FLETT
M.N.R. ADMINISTRATIVE DISTRICT
TEMAGAMI
MINING DIVISION
SUDBURY
LAND TITLES / REGISTRY DIVISION
NIPISSING

Ministry of Natural Resources
Land Management Branch
Ontario

Original Compilation: MAY, 1985
Revised: G-1711

G-1711
FLETT TWP
16 14 12 10 8 6 4 2 2 4 6 8 10 12 14 16

G-1711
FLETT TWP
16 14 12 10 8 6 4 2 2 4 6 8 10 12 14 16

151-1
151-1
151-1
151-1

MAP SYMBOLOLOGY

| | |
|---|---|
| Aerial Cableway | Pipeline (above ground) |
| Boundary | Railroad |
| International | Single Track |
| District, Township Section Boundaries | Double Track |
| Approach | Abandoned |
| Lot, Concession | Turntable |
| Approach | Road |
| Park Boundary | Highway, County |
| Bridge | Turntable |
| Beam, Railroad | Access Road of doubtful maintenance or abandoned (dashed) |
| Building | Trail, Bush Road (single, alley) |
| Chimney | Rapids |
| Cliff, Pit, Pile | Double line river with multiple rapids |
| Contours | Double line river with multiple rapids |
| Interpreted | Reservoir |
| Approximate | River, Stream, Canal |
| Depression | Approximate position |
| Control Points | Direction of flow |
| Horizontal | Rock |
| Vertical | Spot Elevation (lake elevations) |
| Culvert | Fence, Hedge, Wall |
| Falls | Transmission Line |
| Double line river | Poles |
| Feature Outline (Construction features, etc.) | Pipes |
| Flooded Land | Tunnel |
| Lock | Utility Poles |
| Marsh or Swamp | Wharf, Dock, Pier |
| Mast | Wooded Area |
| Mine Head Frame | |
| Outcrop | |

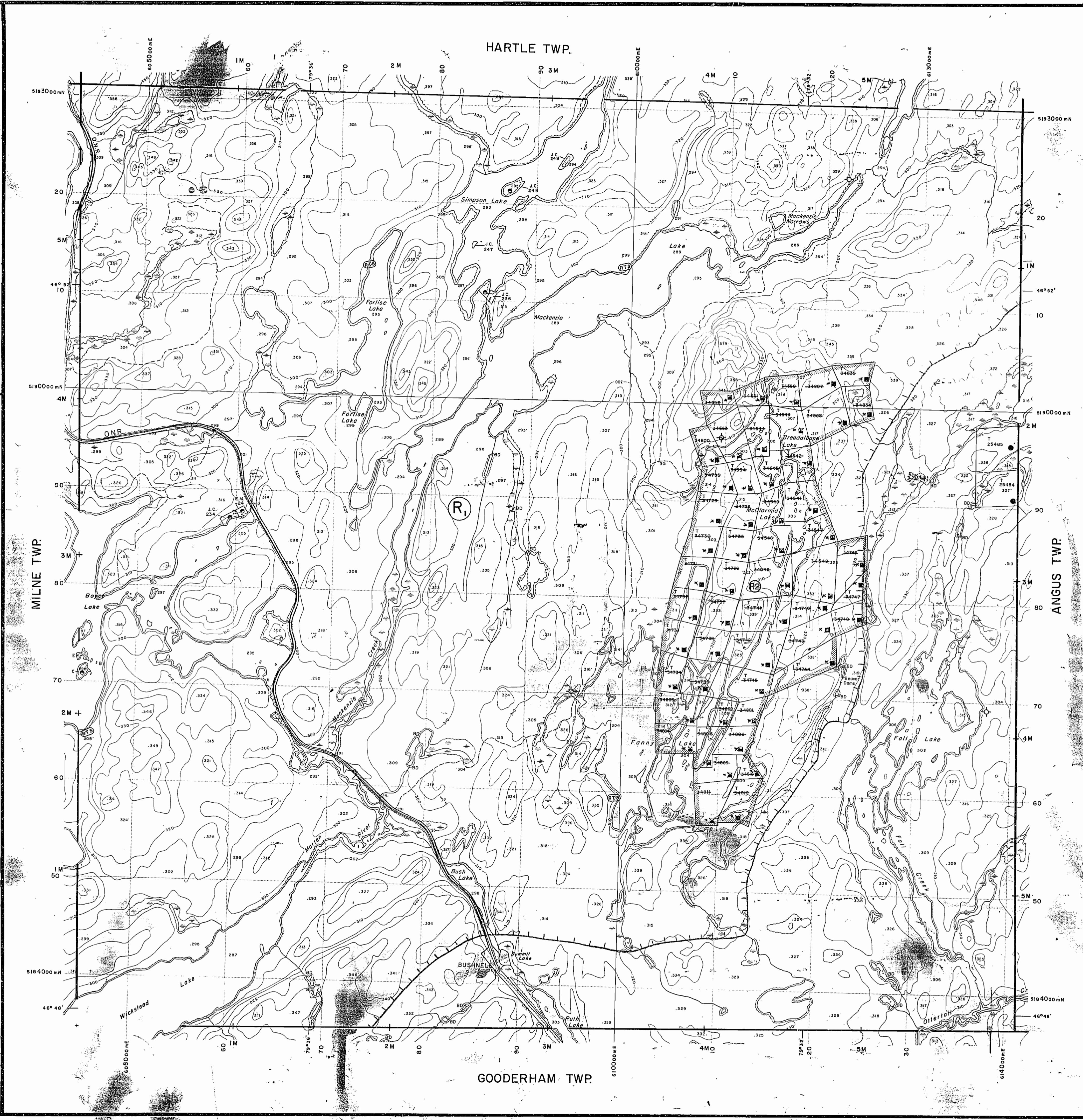
AREAS WITHDRAWN FROM DISPOSITION

- M.R.O. - MINING RIGHTS ONLY
- S.R.O. - SURFACE RIGHTS ONLY
- M.+S. - MINING AND SURFACE RIGHTS

| Description | Order No. | Date | Disposition | File |
|--|-----------|-----------|-------------|--------|
| Part of order No 3182 REPEATED by order | | | | |
| O-M. 0/50 NER effective April 3/90 at 7:00 AM E.S.T. | | | | |
| SEC.35/90 W-ONT-77/94 | | MAY 27/94 | M.S. | 195350 |

NOTE:
"THIS MAP SHOWS THE APPROXIMATE LOCATION OF THE BOUNDARIES OF THE AREA WHICH IS THE SUBJECT OF CURRENT LITIGATION. THE EXACT LOCATION WILL BE SHOWN FOLLOWING CONFIRMATION BY THE PARTIES TO THE ACTION"

* JUNE 1, 1994 OPENINGS
ONTARIO GAZETTE-VOL.127-20
MAY 14, 1994 PAGE 1976



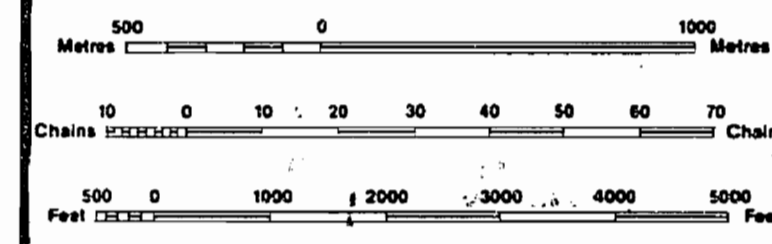
LEGEND

| | |
|------------------------------------|--|
| HIGHWAY AND ROUTE No. | |
| OTHER ROADS | |
| TRAILS | |
| SURVEYED LINES: | |
| TOWNSHIPS, BASE LINES, ETC. | |
| LOTS, MINING CLAIMS, PARCELS, ETC. | |
| UNSURVEYED LINES: | |
| LOT LINES | |
| PARCEL BOUNDARY | |
| MINING CLAIMS ETC. | |
| RAILWAY AND RIGHT OF WAY | |
| UTILITY LINES | |
| NON-PERENNIAL STREAM | |
| FLOODING OR FLOODING RIGHTS | |
| SUBDIVISION OR COMPOSITE PLAN | |
| RESERVATIONS: | |
| ORIGINAL SHORELINE | |
| MARSH OR MUSKEG | |
| MINES | |
| TRAVERSE MONUMENT | |

DISPOSITION, OF CROWN LANDS

| TYPE OF DOCUMENT | SYMBOL |
|---------------------------------|--------|
| PATENT, SURFACE & MINING RIGHTS | ● |
| " SURFACE RIGHTS ONLY | ○ |
| " MINING RIGHTS ONLY | ○ |
| LEASE, SURFACE & MINING RIGHTS | ■ |
| " SURFACE RIGHTS ONLY | □ |
| " MINING RIGHTS ONLY | □ |
| LICENCE OF OCCUPATION | ▽ |
| ORDER-IN-COUNCIL | OC |
| RESERVATION | ○ |
| CANCELLED | ○ |
| SAND & GRAVEL | ○ |
| LAND USE PERMIT | ○ |

NOTE: MINING RIGHTS IN PARCELS PATENTED PRIOR TO MAY 6, 1912, VESTED IN ORIGINAL PATENTEE BY THE PUBLIC LANDS ACT, R.S.O. 1970, CHAP. 380, SEC. 63, SUBSEC. 1.



DATE OF ISSUE
MAY 8 1998
SUDBURY
MINING RECORDER'S OFFICE

THE INFORMATION THAT APPEARS ON THIS MAP HAS BEEN COMPILED FROM VARIOUS SOURCES, AND ACCURACY IS NOT GUARANTEED. THOSE WISHING TO STAKE MINING CLAIMS SHOULD CONSULT WITH THE MINING RECORDER, MINISTRY OF NORTHERN DEVELOPMENT AND MINES, FOR ADDITIONAL INFORMATION ON THE STATUS OF THE LANDS SHOWN HEREON.

TOWNSHIP
FLETT
M.N.R. ADMINISTRATIVE DISTRICT
TEMAGAMI
MINING DIVISION
SUDBURY
LAND TITLES / REGISTRY DIVISION
NIPISSING

Ministry of Natural Resources
Land Management Branch
Ontario

Original Compilation: MAY, 1985
Revised:

Number
G-1711

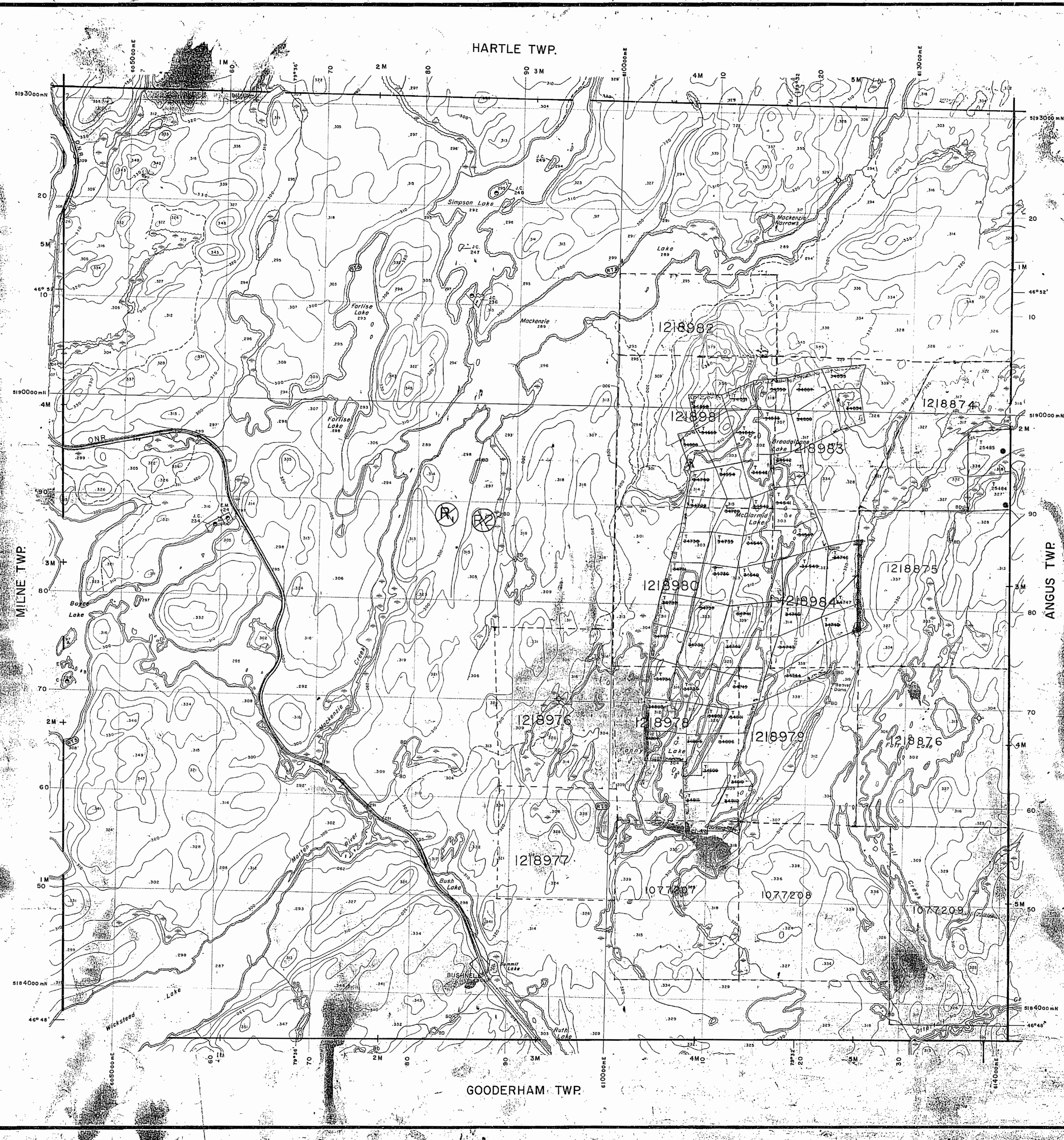
MAP SYMBOLOLOGY

| | |
|--|--|
| | |
| | |
| | |
| | |
| | |
| | |
| | |
| | |
| | |
| | |
| | |
| | |
| | |
| | |
| | |
| | |
| | |
| | |
| | |
| | |
| | |
| | |

AREAS WITHDRAWN FROM DISPOSITION

| |
|--|
| M.R.O. - MINING RIGHTS ONLY |
| S.R.O. - SURFACE RIGHTS ONLY |
| M.S. - MINING AND SURFACE RIGHTS |
| Description Order No. Date Disposition File 2225790 3-2379 8/2/82 M.S. 19220 244-24400 9-2/82 M.S. 19220 Part of order No. 3182 REOPENED by order O.M. 0/90 NER effective April 3, 1990 at 7:00 AM E.S.T. SEC 35/90 - W-DNT-77/94 - MAY-27/94 - M.S. - 19220 |

JUNE 1, 1934 OPENINGS
ONTARIO GAZETTE-VOL 127-20
MAY 15, 1934, PAGE 1576



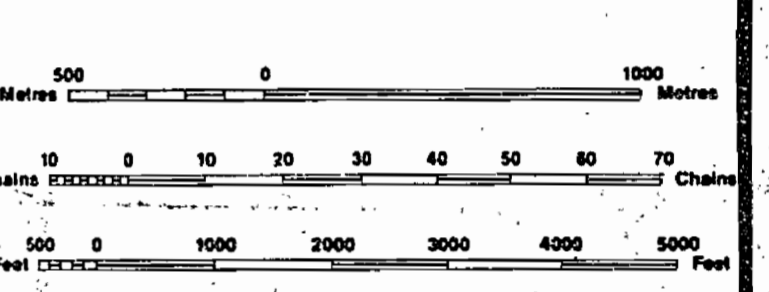
LEGEND

| | |
|--|--|
| | |
| | |
| | |
| | |
| | |
| | |
| | |
| | |
| | |
| | |

DISPOSITION OF CROWN LANDS

| TYPE OF DOCUMENT | SYMBOL |
|---------------------------------|--------|
| PATENT, SURFACE & MINING RIGHTS | ● |
| " SURFACE RIGHTS ONLY | ○ |
| " MINING RIGHTS ONLY | ◐ |
| LEASE, SURFACE & MINING RIGHTS | ◑ |
| " SURFACE RIGHTS ONLY | ◒ |
| " MINING RIGHTS ONLY | ◓ |
| LICENCE OF OCCUPATION | ◔ |
| ORDER-IN-COUNCIL | OC |
| RESERVATION | ○ |
| CANCELLED | ○ |
| SAND & GRAVEL LAND USE PERMIT | ○ |

NOTE: MINING RIGHTS IN PARCELS PATENTED PRIOR TO MAY 6, 1912, VESTED IN ORIGINAL PATENTEES BY THE PUBLIC LANDS ACT, R.S.O. 1970, CHAP. 380, SEC. 63, SUBSEC. 1.



REMOTE TOURIST SET-UP

THIS TOWNSHIP FALLS WITHIN THE TEMAGAMI COMPREHENSIVE PLANNING AREA. SPECIAL WORKING CONDITIONS MAY APPLY TO EXPLORATION ACTIVITIES. FOR MORE DETAILS PLEASE CONTACT:
DISTRICT MANAGER,
NORTH BAY DISTRICT
MINISTRY, NATURAL RESOURCES

THE INFORMATION THAT APPEARS ON THIS MAP HAS BEEN COMPILED FROM VARIOUS SOURCES, AND ACCURACY IS NOT GUARANTEED. THOSE WISHING TO STAKE MINING CLAIMS SHOULD CONSULT WITH THE MINING RECORDER, MINISTRY OF NORTHERN DEVELOPMENT AND MINES, FOR ADDITIONAL INFORMATION ON THE STATUS OF THE LANDS SHOWN HEREON.

TOWNSHIP
FLETT

M.N.R. ADMINISTRATIVE DISTRICT
TEMAGAMI
MINING DIVISION
SUBSURY
LAND TITLES / REGISTRY DIVISION
NIPISSING

Ministry of Natural Resources
Land Management Branch

Original Compilation: MAY, 1985
Revised: **G-1711**

DATE OF ISSUE
JUN 16, 1998
PROVINCIAL RECORDING OFFICE - SUBSURY

G-1511

G-1511

G-1711

FLETT TWP

G-1711

MAP SYMBOLOLOGY

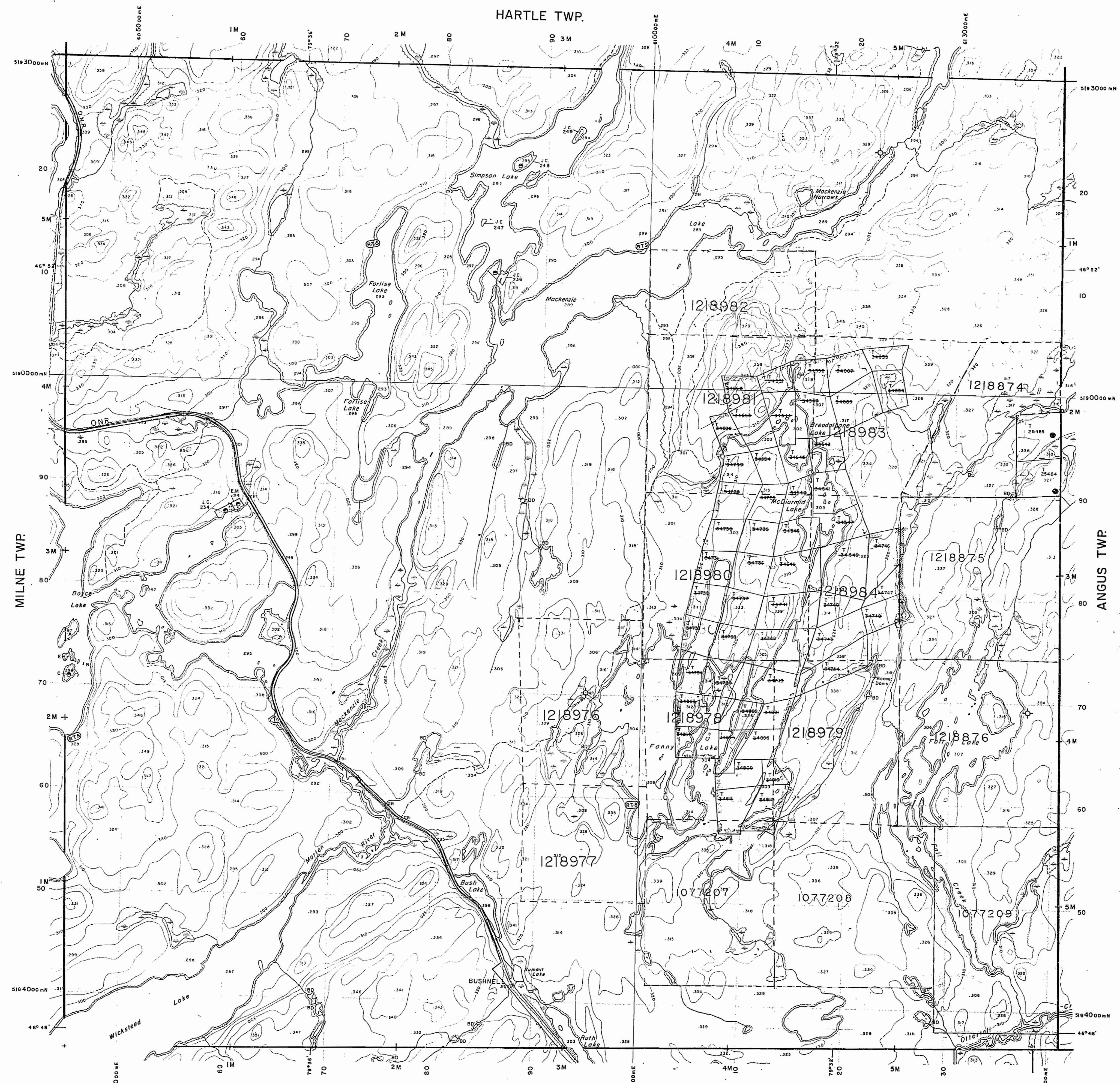
| | | |
|--------------------------------------|---------------------------------------|-------------------------|
| Aerial Cableway | Pipeline | Railroad |
| Boundary | Single Track | Double Track |
| International | Abandonment | Turbine |
| Interprovincial | Road | Highway, County |
| District, Township | Access (road of doubtful | Trail, Back Road |
| Indian Reserve | width of significant driveway) | (outage, alley) |
| Approximate | Rapids | |
| Lot, Concession | Double line river | |
| Approximate | with multiple rapids | |
| Perk Boundary | Double line river | |
| Bridge | with multiple rapids | |
| Road, Railroad | Reservoir | |
| Building | River, Stream, Canal | |
| Chimney | Approximate | |
| Cliff, Pit, Pile | Reservoir | |
| Contours | Approximate | |
| Interpreted | Reservoir | |
| Approximate | Reservoir | |
| Depression | Reservoir | |
| Control Points | Reservoir | |
| Horizontal | Reservoir | |
| Vertical | Reservoir | |
| Culvert | Reservoir | |
| Falls | Reservoir | |
| Double line river | Reservoir | |
| Fence, Hedge, Wall | Reservoir | |
| Feature Outline | Reservoir | |
| (Construction features, etc.) | Reservoir | |
| Flooded Land | Reservoir | |
| Lock | Reservoir | |
| Marsh or Swamp | Reservoir | |
| Mast | Reservoir | |
| Mine Head Frame | Reservoir | |
| Outcrop | Reservoir | |

AREAS WITHDRAWN FROM DISPOSITION

| | | | |
|-----------------------------------|-----------|-------------|--------|
| M.R.O. - MINING RIGHTS ONLY | Order No. | Disposition | File |
| S.R.O. - SURFACE RIGHTS ONLY | 357/85 | 1985/198 | 135160 |
| M.+S. - MINING AND SURFACE RIGHTS | 357/85 | 1985/198 | 135160 |

Part of order No 3182 REOPENED by order
O.M. 0190 NER effective April 3/1990 at 7:00 AM E.S.T.
SEC-35/80 W-GNT-77/94 MAY-27/94 MBS-199180

* JUNE 1, 1994 OPENINGS
NT-1710 SALETTE-VOL.127-20
MAY 1, 1994 PAGE 1976



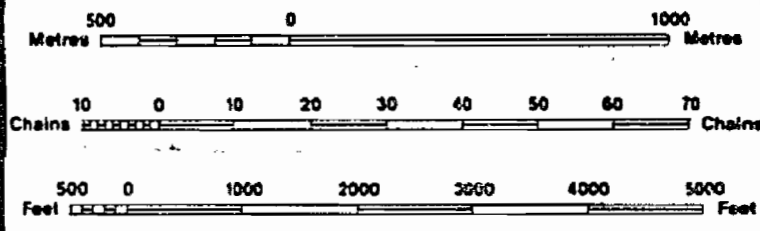
LEGEND

| | |
|--------------------------------------|--|
| HIGHWAY AND ROUTE No. | |
| OTHER ROADS | |
| TRAILS | |
| SURVEYED LINES: | |
| TOWNSHIPS, BASE LINES, ETC. | |
| LOTS, MINING CLAIMS, PARCELS, ETC. | |
| UNSURVEYED LINES: | |
| LOT LINES | |
| PARCEL BOUNDARY | |
| MINING CLAIMS ETC. | |
| RAILWAY AND RIGHT OF WAY | |
| UTILITY LINES | |
| NON-PERENNIAL STREAM | |
| FLOODING OR FLOODING RIGHTS | |
| SUBDIVISION OR COMPOSITE PLAN | |
| RESERVATIONS | |
| ORIGINAL SHORELINE | |
| MARSH OR MUSKEG | |
| MINES | |
| TRAVERSE MONUMENT | |

DISPOSITION OF CROWN LANDS

| TYPE OF DOCUMENT | SYMBOL |
|---------------------------------|--------|
| PATENT, SURFACE & MINING RIGHTS | |
| " SURFACE RIGHTS ONLY | |
| " MINING RIGHTS ONLY | |
| LEASE, SURFACE & MINING RIGHTS | |
| " SURFACE RIGHTS ONLY | |
| " MINING RIGHTS ONLY | |
| LICENCE OF OCCUPATION | |
| ORDER-IN-COUNCIL | |
| RESERVATION | |
| CANCELLED | |
| SAND & GRAVEL | |
| LAND USE PERMIT | |

NOTE: MINING RIGHTS IN PARCELS PATENTED PRIOR TO MAY 9, 1913, VESTED IN ORIGINAL PATENTEE BY THE PUBLIC LANDS ACT, R.S.O. 1970, CHAP. 380, SEC. 63, SUBSEC. 1.



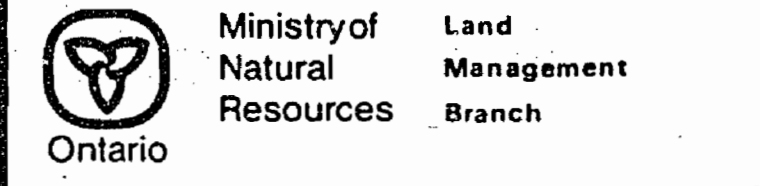
SCALE 1:20 000
GRID ZONE:17

REMOTE TOURIST SET-UP

THIS TOWNSHIP FALLS WITHIN THE TEMAGAMI COMPREHENSIVE PLANNING AREA. SPECIAL WORKING CONDITIONS MAY APPLY TO EXPLORATION ACTIVITIES. FOR MORE DETAILS PLEASE CONTACT:
DISTRICT MANAGER,
NORTH BAY DISTRICT
MINISTRY, NATURAL RESOURCES

THE INFORMATION THAT APPEARS ON THIS MAP HAS BEEN COMPILED FROM VARIOUS SOURCES, AND ACCURACY IS NOT GUARANTEED. THOSE WISHING TO STAKE MINING CLAIMS SHOULD CONSULT WITH THE MINING RECORDER, MINISTRY OF NORTHERN DEVELOPMENT AND MINES, FOR ADDITIONAL INFORMATION ON THE STATUS OF THE LANDS SHOWN HEREON.

TOWNSHIP
FLETT
M.N.R. ADMINISTRATIVE DISTRICT
TEMAGAMI
MINING DIVISION
SUDBURY
LAND TITLES / REGISTRY DIVISION
NIPISSING



Original Completion: MAY, 1985
Revised:
Number: G-1711

G-1711

FLETT TWP

G-1711

476

Hartle Twp.

THE TOWNSHIP OF

FLETT

DISTRICT OF NIPISSING

TIMISKAMING MINING DIVISION

SCALE: 1-INCH=40 CHAINS

LEGEND

- PATENTED LAND Ⓟ
- CROWN LAND SALE C.S.
- LEASES Ⓛ
- LOCATED LAND Loc.
- LICENSE OF OCCUPATION L.O.
- MINING RIGHTS ONLY M.R.O.
- SURFACE RIGHTS ONLY S.R.O.
- ROADS —
- IMPROVED ROADS —
- KING'S HIGHWAYS —
- RAILWAYS —
- POWER LINES —
- MARSH OR MUSKEG —
- MINES Ⓜ
- CANCELLED C.

NOTES

400' Surface rights reservation around all lakes and rivers.

L.O. 6065 Covers Flooding Rights H.E.P.C. Of Ontario. File 46192.

Approximate location of Timagami Provincial Forest shown thus: —



PLAN NO.- M. 476

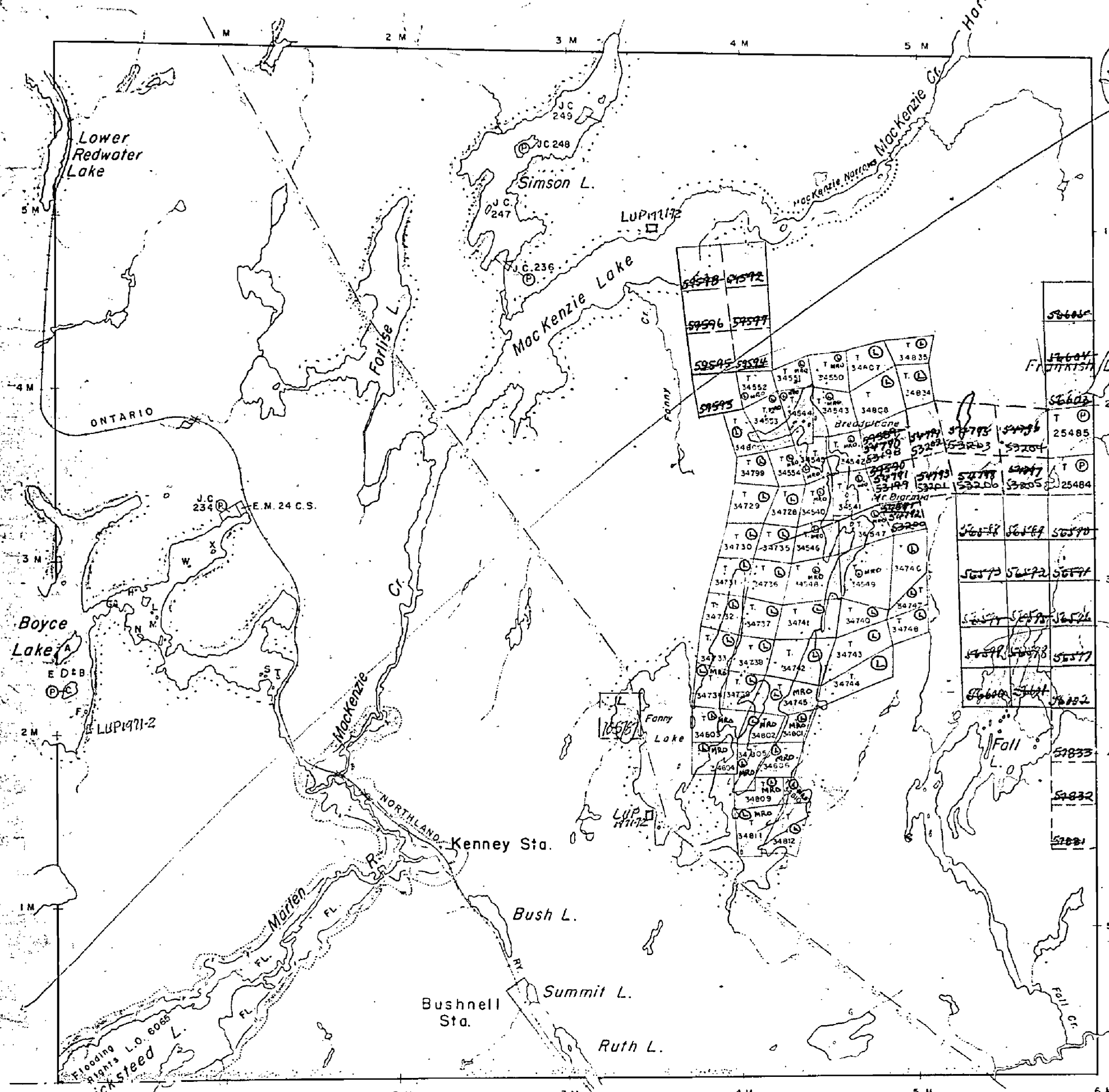
DEPARTMENT OF MINES

— ONTARIO —

Milne Twp.

Angus Twp.

Gooderham Twp.



Revised Jan 18/12

OFFICE USE ONLY
Hartle Twp.

THE TOWNSHIP
OF

FLETT

DISTRICT OF
NIPISSING

LARDER LAKE
MINING DIVISION

SCALE: 1-INCH=40 CHAINS

LEGEND

| | |
|-----------------------|--------|
| PATENTED LAND | Ⓟ |
| CROWN LAND SALE | C.S. |
| LEASES | Ⓞ |
| LOCATED LAND | Loc. |
| LICENSE OF OCCUPATION | L.O. |
| MINING RIGHTS ONLY | M.R.O. |
| SURFACE RIGHTS ONLY | S.R.O. |
| ROADS | — |
| IMPROVED ROADS | — |
| KING'S HIGHWAYS | — |
| RAILWAYS | — |
| POWER LINES | — |
| MARSH OR MUSKEG | — |
| MINES | ⓧ |
| CANCELLED | Ⓞ |

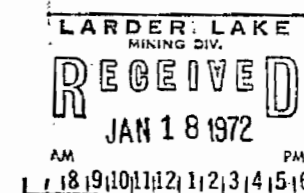
NOTES

400' Surface rights reservation around all lakes and rivers.

L.O. 6065 Covers Flooding Rights H.E.P.C. Of Ontario. File 46192.

Approximate location of Timagami Provincial Forest shown thus: —

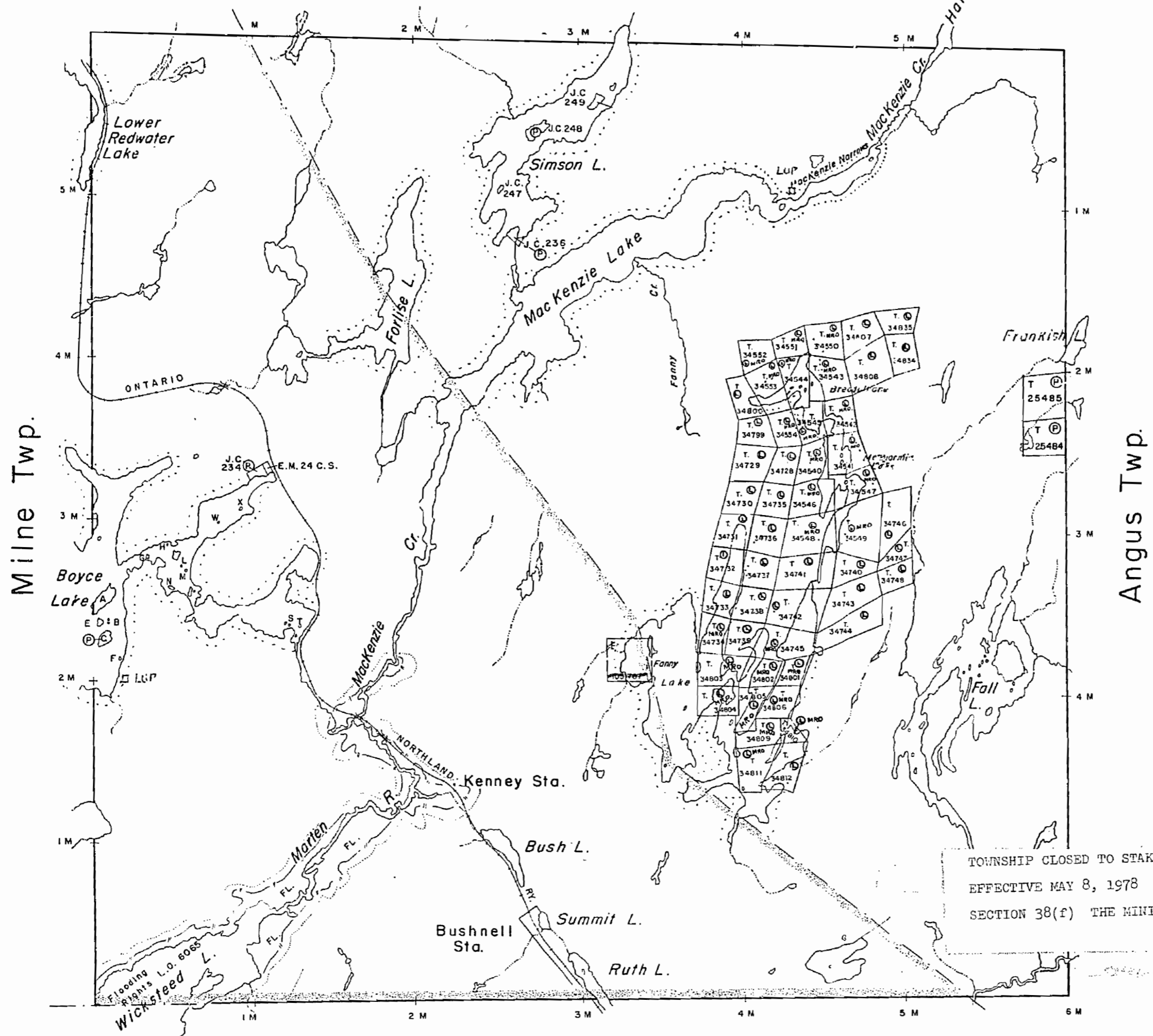
Wicksteed Lake: Lands subject to flooding. Withdrawn from disposition July 20, 1970, File 160707, vol. 2.



FLETT

PLAN NO.- M. 476

**ONTARIO
DEPARTMENT OF MINES
AND NORTHERN AFFAIRS**



TOWNSHIP CLOSED TO STAKING
EFFECTIVE MAY 8, 1978
SECTION 38(f) THE MINING ACT

Township Closed to Staking
Effective Nov. 5, 1982,
Section 36(1)(a) The Mining
Act.

* Oct/83

THE TOWNSHIP OF

FLETT

DISTRICT OF NIPISSING

SUDBURY MINING DIVISION

SCALE: 1-INCH=40 CHAINS

LEGEND

| | |
|-----------------------|--------|
| PATENTED LAND | Ⓟ |
| CROWN LAND SALE | C.S. |
| LEASES | Ⓞ |
| LOCATED LAND | Loc. |
| LICENSE OF OCCUPATION | L.O. |
| MINING RIGHTS ONLY | M.R.O. |
| SURFACE RIGHTS ONLY | S.R.O. |
| ROADS | — |
| IMPROVED ROADS | — |
| KING'S HIGHWAYS | — |
| RAILWAYS | — |
| POWER LINES | — |
| MARSH OR MUSKEG | — |
| MINES | Ⓧ |
| CANCELLED | C. |

NOTES

400' Surface rights reservation around all lakes and rivers.

L.O. 6065 Covers Flooding Rights H.E.P.C. Of Ontario. File 46192.

Approximate location of Timagami Provincial Forest shown thus: —

Wicksteed Lake: Lands subject to flooding. Withdrawn from disposition July 20, 1970, File 160707, vol. 2.

Township closed to staking effective May 8 '78, Sec.38(f) of Mining Act.

* IN SERVICE 1983 10 01 - J.W.

FLETT

PLAN NO.- M.476

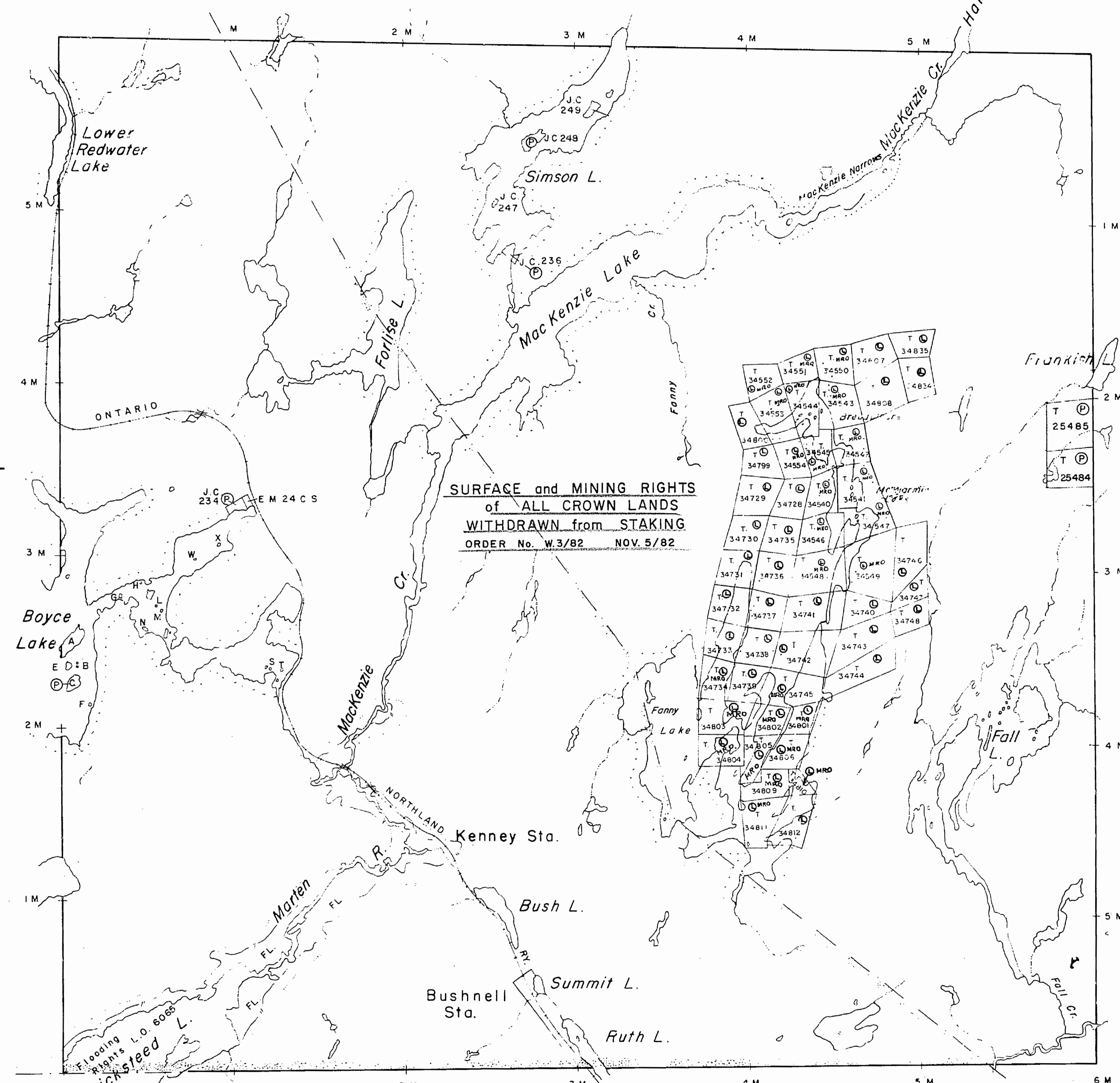
ONTARIO
MINISTRY OF NATURAL RESOURCES
SURVEYS AND MAPPING BRANCH

Hartle Twp.

Milne Twp.

Angus Twp.

Gooderham Twp.



M.476

M.476

FLETT JWB

FLETT JWB

M.476

M.476