

2213

Carmichael Twp.

THE TOWNSHIP OF

FORD

DISTRICT OF COCHRANE

PORCUPINE MINING DIVISION

SCALE: 1-INCH 40 CHAINS

M 2213 49

LEGEND

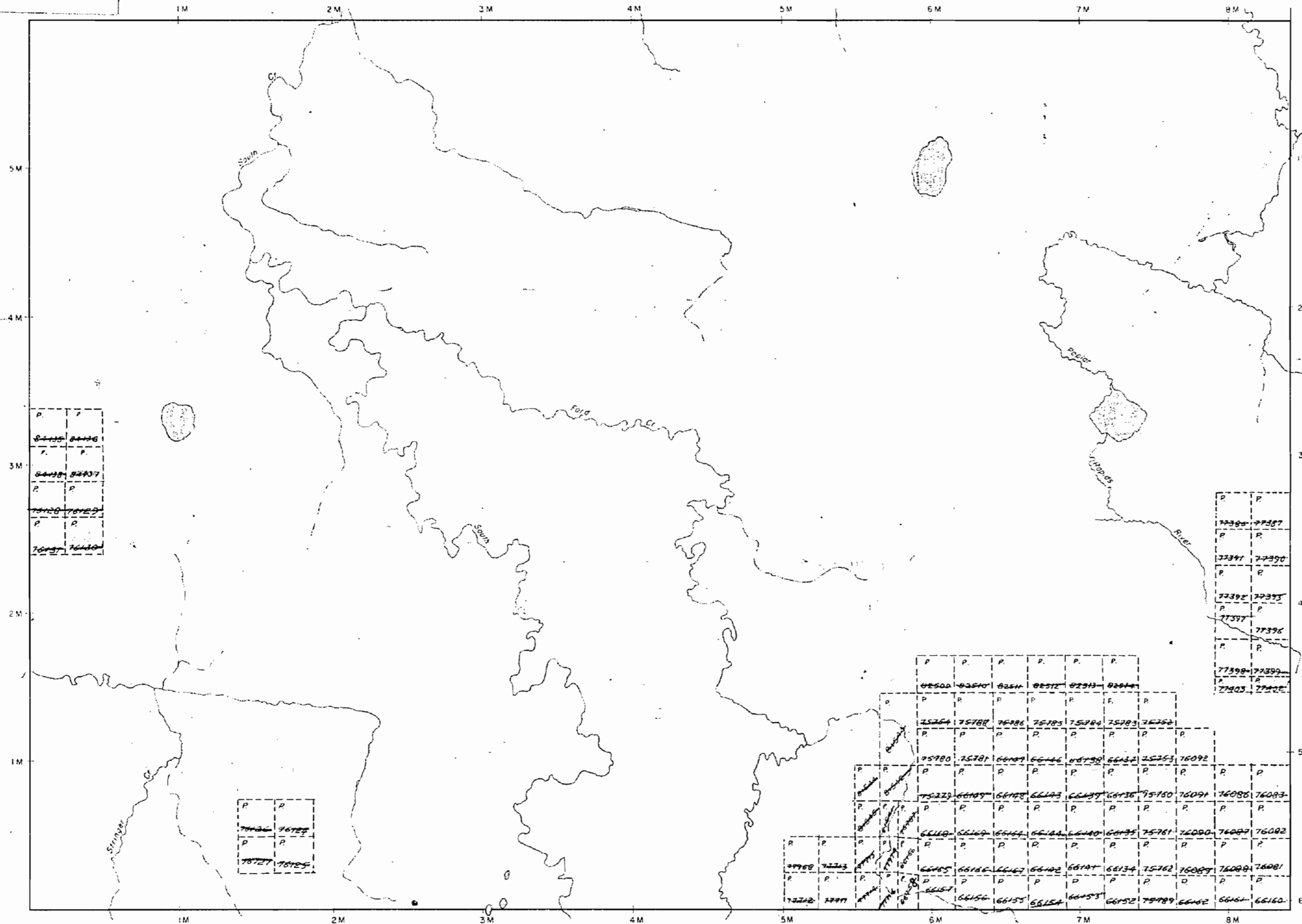
- PATENTED LAND Ⓟ
- CROWN LAND SALE CS
- LEASES Ⓛ
- LOCATED LAND Loc
- LICENSE OF OCCUPATION L.O.
- MINING RIGHTS ONLY M.R.O.
- SURFACE RIGHTS ONLY S.R.O.
- ROADS —
- IMPROVED ROADS —
- KING'S HIGHWAYS —
- RAILWAYS —
- POWER LINES —
- MARSH OR MUSKEG —
- MINES X

NOTES

400' Reserve around all lakes & rivers to Dept. of Lands & Forests

Stringer Twp.

Laidlaw Twp.



Oke Twp.



PLAN NO. - M-2213

DEPARTMENT OF MINES -ONTARIO-

THE TOWNSHIP OF

FORD

DISTRICT OF COCHRANE

PORCUPINE MINING DIVISION

SCALE: 1-INCH 40 CHAINS

LEGEND

PATENTED LAND	Ⓟ
CROWN LAND SALE	C.S.
LEASES	Ⓛ
LOCATED LAND	Loc.
LICENSE OF OCCUPATION	L.O.
MINING RIGHTS ONLY	M.R.O.
SURFACE RIGHTS ONLY	S.R.O.
ROADS	—
IMPROVED ROADS	—
KING'S HIGHWAYS	—
RAILWAYS	—
POWER LINES	—
MARSH OR MUSKEG	—
MINES	Ⓜ
CANCELLED	Ⓧ

NOTES

400' Reserve around all lakes & rivers to Dept. of Lands & Forests.

PORCUPINE MINING DIVISION
RECEIVED
 MAR 10 1972
 AM 7 18 19 10 11 12 1 12 1 3 14 15 16 PM

PLAN NO. - M-2213

ONTARIO
DEPARTMENT OF MINES
AND NORTHERN AFFAIRS

Carmichael Twp.



Stringer Twp.

Laidlaw Twp.

Oke Twp.

CARMICHAEL Twp. M-2071

THE TOWNSHIP OF

FORD

DISTRICT OF COCHRANE

PORCUPINE MINING DIVISION

SCALE: 1-INCH = 40 CHAINS

LEGEND

PATENTED LAND	Ⓟ
CROWN LAND SALE	C.S.
LEASES	Ⓛ
LOCATED LAND	Loc.
LICENSE OF OCCUPATION	L.O.
MINING RIGHTS ONLY	M.R.O.
SURFACE RIGHTS ONLY	S.R.O.
ROADS	—
IMPROVED ROADS	—
KING'S HIGHWAYS	—
RAILWAYS	—
POWER LINES	—
MARSH OR MUSKEG	⊛
MINES	⚡
CANCELLED	C.

NOTES

400' Reserve around all lakes & rivers

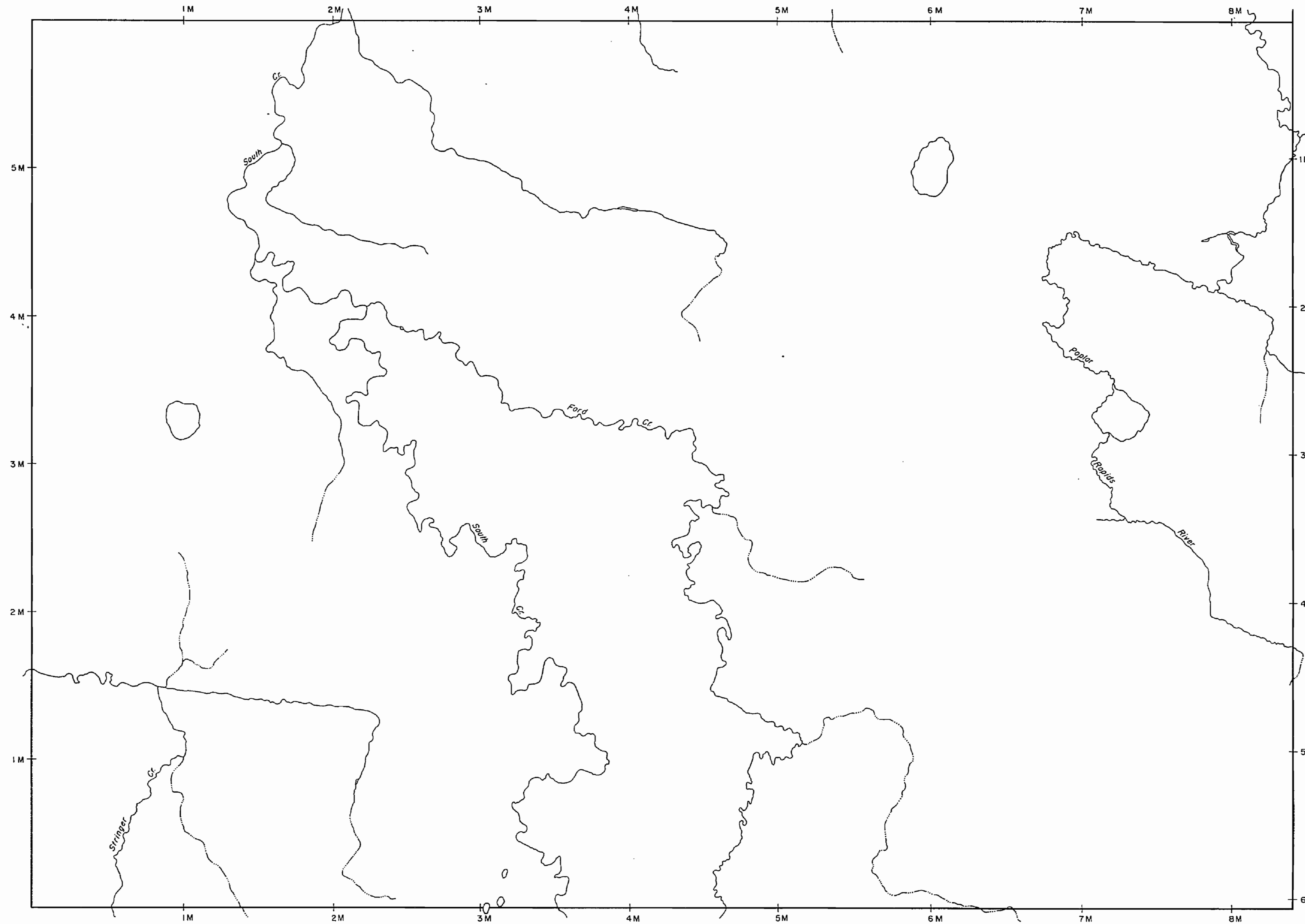
S.R. & M.R. Reserved in N.W. corner of Twp for prescribed burning July 21/80 Order #NR.W.94/80 (Res. until Oct. 31/80)

MAP REPLACED JULY 13, 1992 BY D.C.

Received Feb 12/80

PLAN NO. - M-2213

ONTARIO
MINISTRY OF NATURAL RESOURCES
SURVEYS AND MAPPING BRANCH



STRINGER Twp. M-2177

LAIDLAW Twp. M-1967

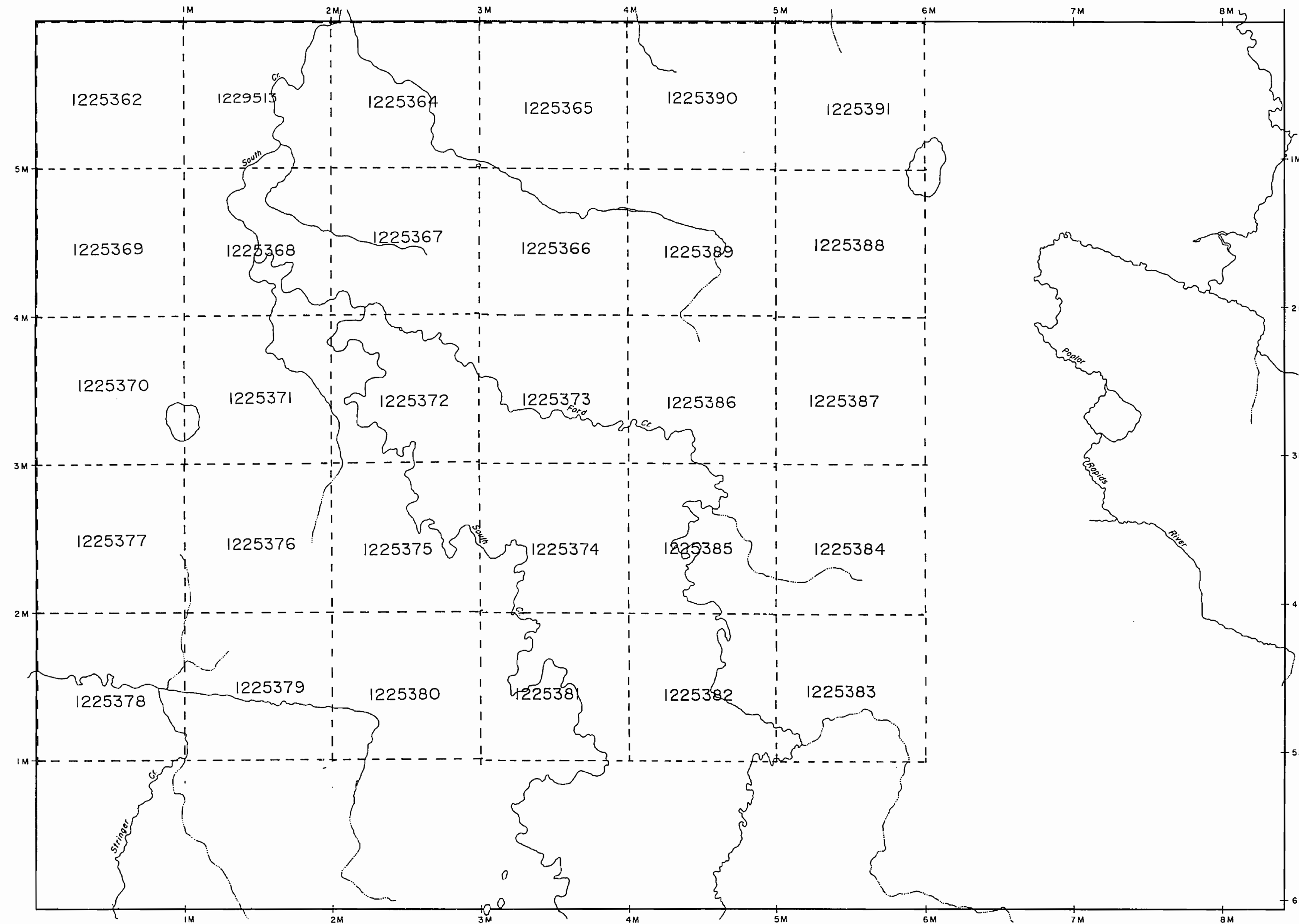
OKE Twp. M-2000

Carmichael Twp.

Stringer Twp.

Laidlaw Twp.

Oke Twp.



LEGEND

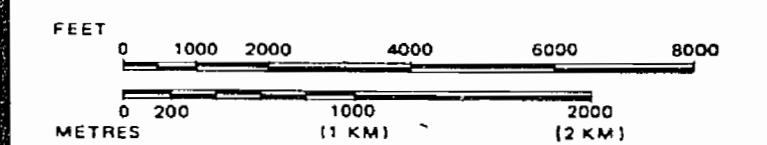
- HIGHWAY AND ROUTE No.
- OTHER ROADS
- TRAILS
- SURVEYED LINES:
 - TOWNSHIPS, BASE LINES, ETC.
 - LOTS, MINING CLAIMS, PARCELS, ETC.
- UNSURVEYED LINES:
 - LOT LINES
 - PARCEL BOUNDARY
 - MINING CLAIMS ETC.
- RAILWAY AND RIGHT OF WAY
- UTILITY LINES
- NON-PERENNIAL STREAM
- FLOODING OR FLOODING RIGHTS
- SUBDIVISION OR COMPOSITE PLAN
- RESERVATIONS
- ORIGINAL SHORELINE
- MARSH OR MUSKEG
- MINES
- TRAVERSE MONUMENT

THE INFORMATION THAT APPEARS ON THIS MAP HAS BEEN COMPILED FROM VARIOUS SOURCES AND ACCURACY IS NOT GUARANTEED. THOSE WISHING TO STAKE MINING CLAIMS SHOULD CONSULT WITH THE MINING RECORDER, MINISTRY OF NORTHERN DEVELOPMENT AND MINES, FOR ADDITIONAL INFORMATION ON THE STATUS OF THE LANDS SHOWN HEREON.

DISPOSITION OF CROWN LANDS

TYPE OF DOCUMENT	SYMBOL
PATENT, SURFACE & MINING RIGHTS	
" SURFACE RIGHTS ONLY	
" MINING RIGHTS ONLY	
LEASE, SURFACE & MINING RIGHTS	
" SURFACE RIGHTS ONLY	
" MINING RIGHTS ONLY	
LICENCE OF OCCUPATION	
ORDER-IN-COUNCIL	
RESERVATION	
CANCELLED	
SAND & GRAVEL	

SCALE: 1 INCH = 40 CHAINS



TOWNSHIP

FORD

M.N.R. ADMINISTRATIVE DISTRICT

HEARST

MINING DIVISION

PORCUPINE

LAND TITLES / REGISTRY DIVISION

COCHRANE



Ministry of Natural Resources Ontario

Ministry of Northern Development and Mines

Date MAY 7, 1992

Number

ACTIVATED JULY 13, 1992 BY D.C. CHECKED G.W.

G-877

2213

Carmichael Twp.

THE TOWNSHIP OF

FORD

DISTRICT OF COCHRANE

PORCUPINE MINING DIVISION

SCALE: 1-INCH = 40 CHAINS

LEGEND

- PATENTED LAND Ⓟ
- CROWN LAND SALE C.S.
- LEASES Ⓛ
- LOCATED LAND Loc.
- LICENSE OF OCCUPATION L.O.
- MINING RIGHTS ONLY M.R.O.
- SURFACE RIGHTS ONLY S.R.O.
- ROADS —
- IMPROVED ROADS —
- KING'S HIGHWAYS —
- RAILWAYS —
- POWER LINES —
- MARSH OR MUSKEG —
- MINES Ⓜ

NOTES

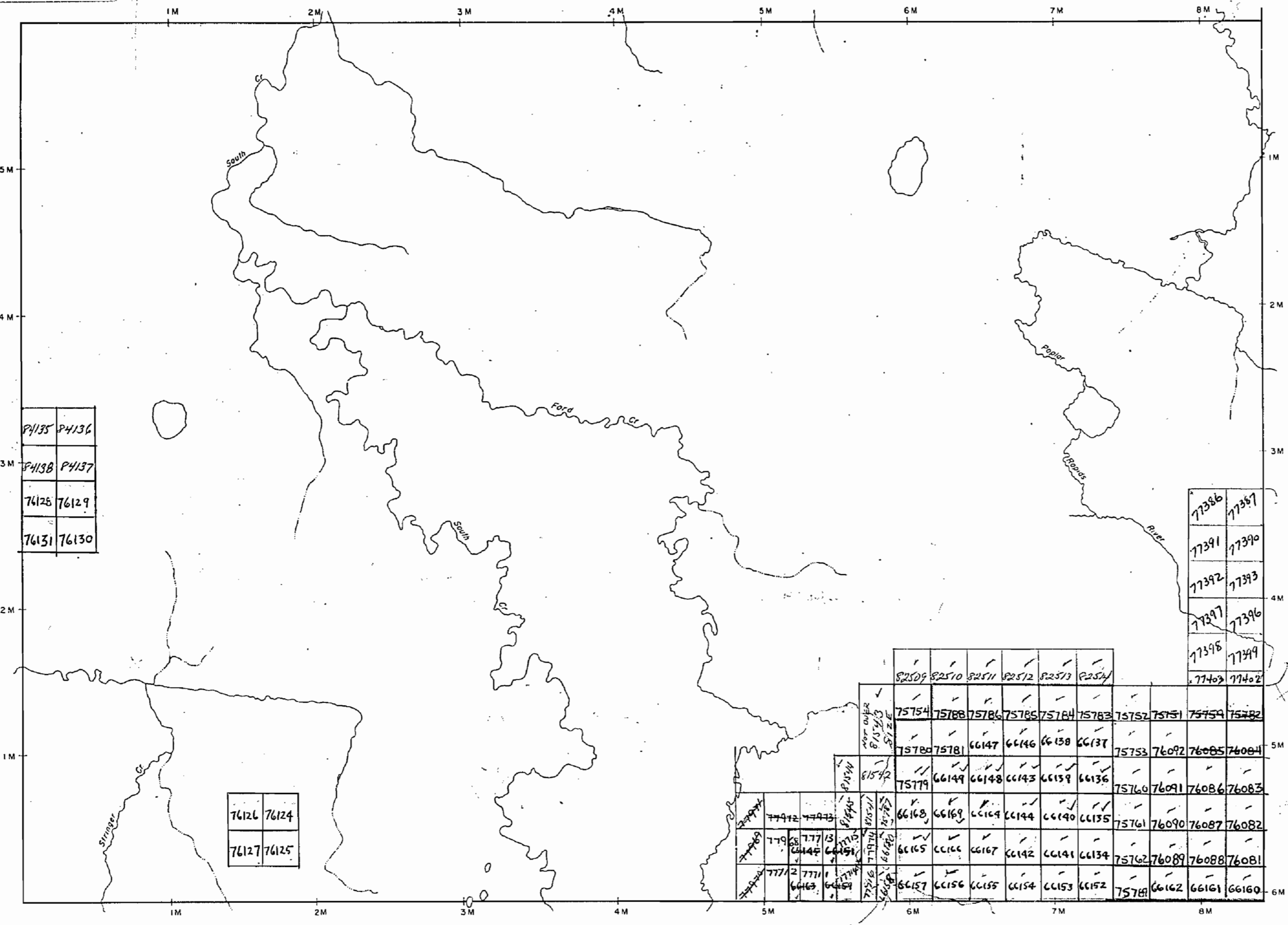
400' Reserve around all lakes & rivers to Dept. of Lands & Forests.

PLAN NO. - M-2213

DEPARTMENT OF MINES
-ONTARIO-

Stringer Twp.

Laidlaw Twp.



Oke Twp.

2213

Carmichael Twp.

THE TOWNSHIP OF

FORD

DISTRICT OF COCHRANE

PORCUPINE MINING DIVISION

SCALE: 1-INCH = 40 CHAINS

LEGEND

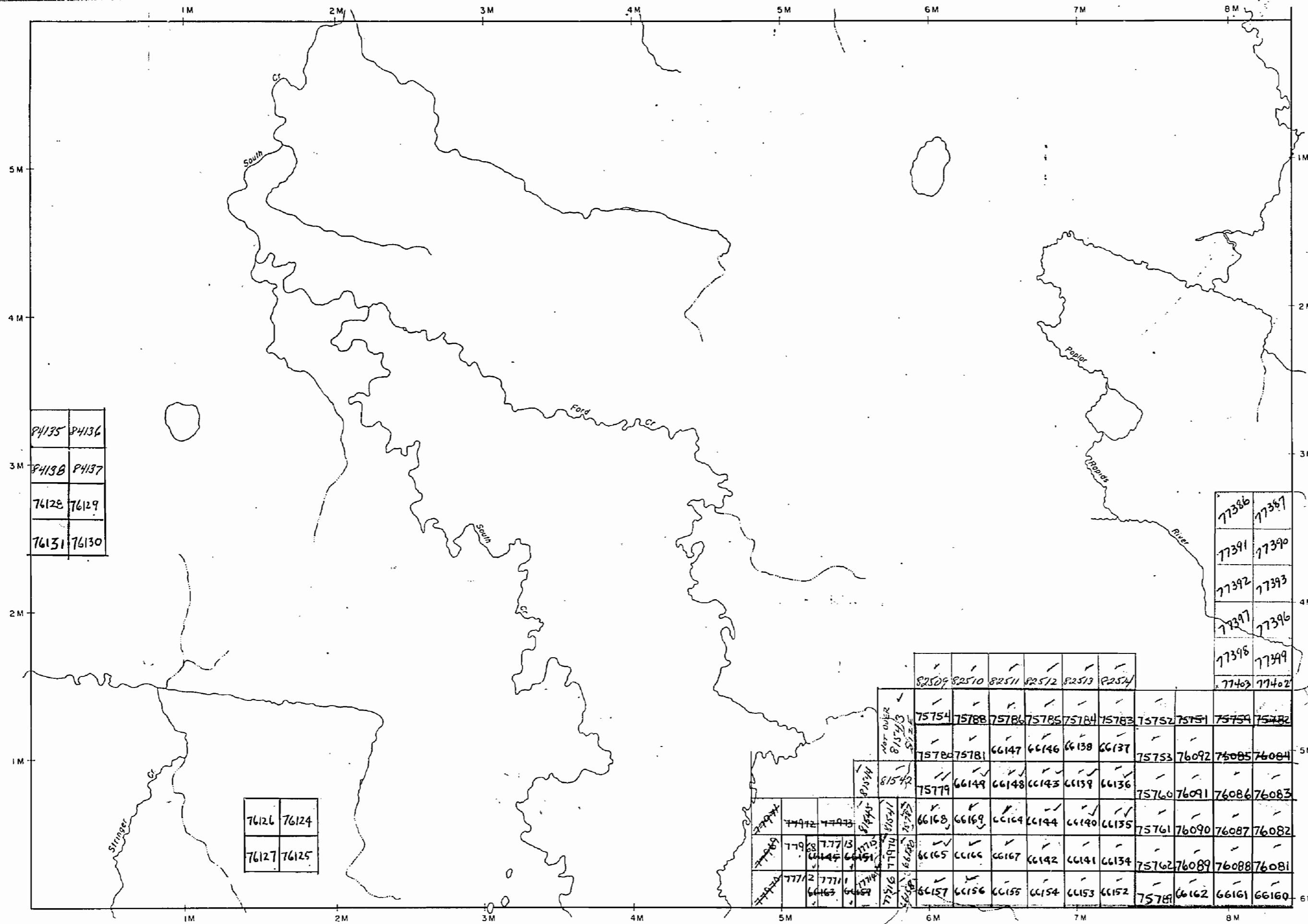
- PATENTED LAND Ⓟ
- CROWN LAND SALE CS
- LEASES Ⓞ
- LOCATED LAND L&C
- LICENSE OF OCCUPATION L.O.
- MINING RIGHTS ONLY M.R.O.
- SURFACE RIGHTS ONLY S.R.O.
- ROADS —
- IMPROVED ROADS —
- KING'S HIGHWAYS —
- RAILWAYS —
- POWER LINES —
- MARSH OR MUSKEG —
- MINES —
- CANCELLED —

NOTES

400' Reserve around all lakes & rivers to Dept. of Lands & Forests.

Stringer Twp.

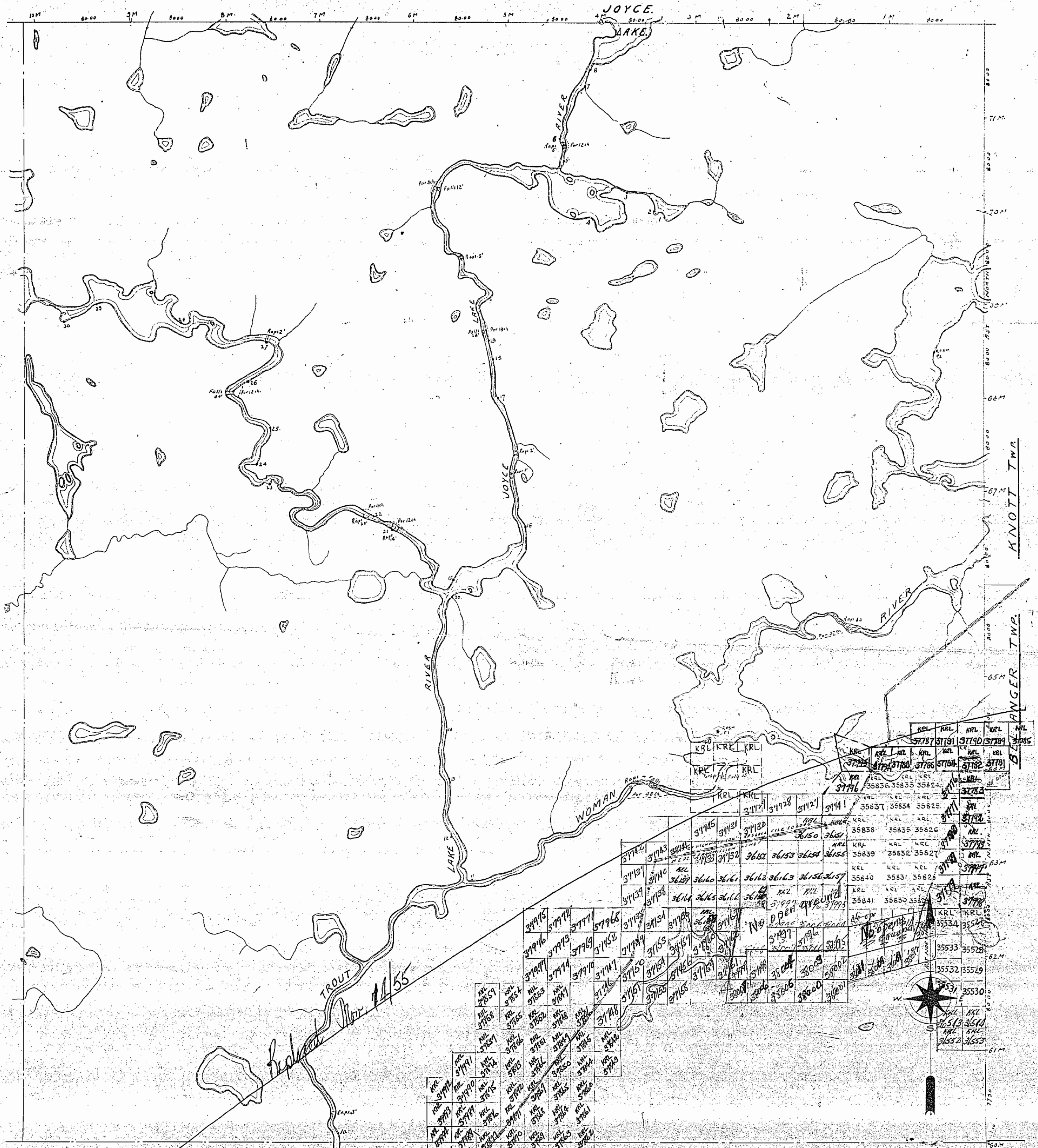
Laidlaw Twp.



Oke Twp.

PLAN NO. - M-2213

DEPARTMENT OF MINES
-ONTARIO-

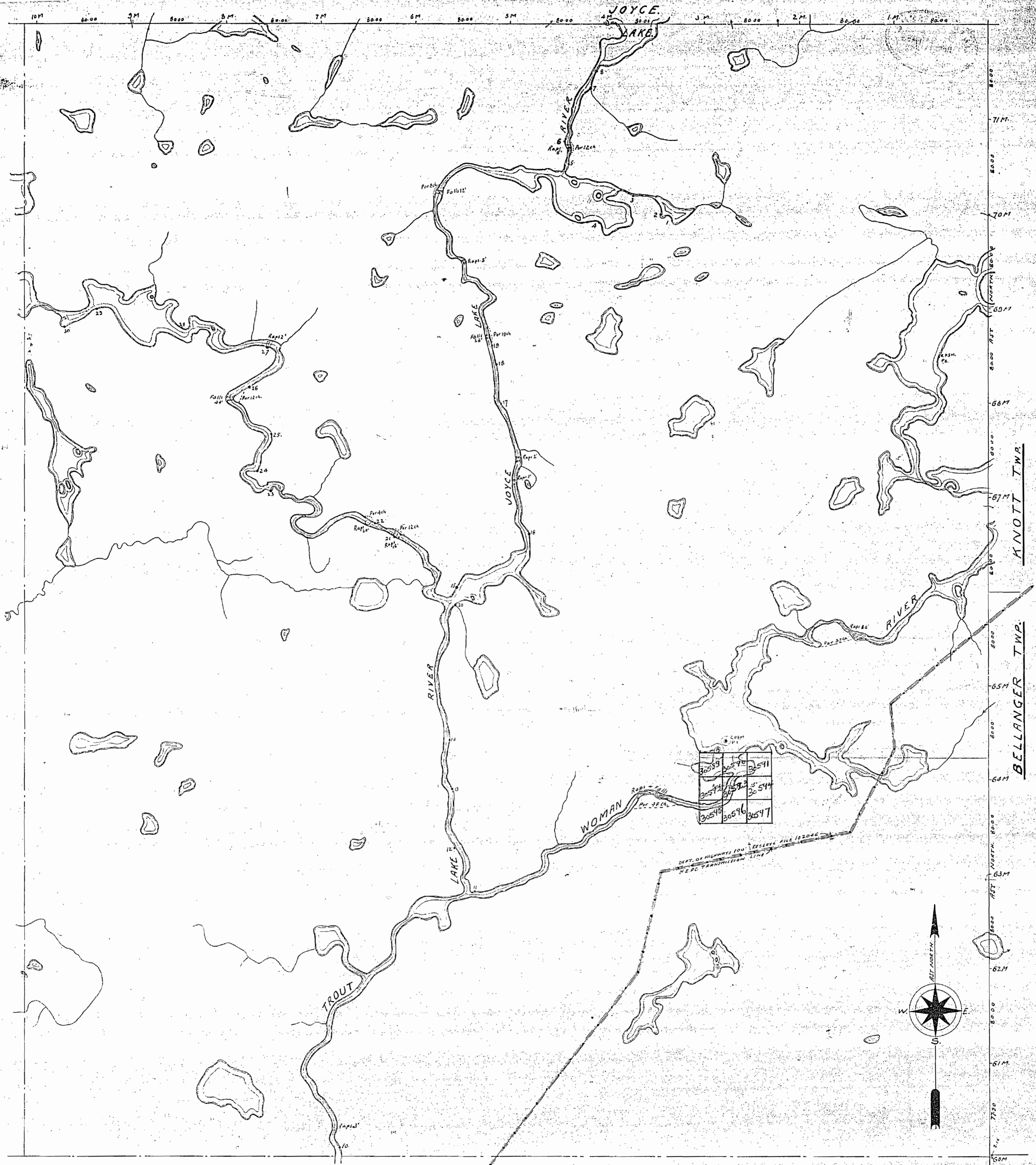


PLAN OF
TROUT LAKE RIVER AREA,
AND
JOYCE LAKE & RIVER AREA.
DISTRICT OF KENORA & PATRICIA PORTION.

RED LAKE MINING DIVISION
 Scale: 40 chains to an inch.

M. 2213

East Edge of
 East Meridian by O.L.S. No. 100, 1920
 North Base by O.L.S. Speight & Van Nuyssland 1924
 Traverses of Joyce Lake, Trout Lake River, Joyce Lake River by O.L.S. C.A. 1927
 1927 Traverses, measurements shown thus $\frac{1}{2}$ 1/2
 Topographical Survey Control, Department of Interior, Ottawa, Ontario
 Other Lakes & Rivers from Royal Survey, Topographical Survey, Dept. of Interior, Ottawa, Ontario
 Power Transmission Lines, Justin Morris Contracted Gold River Ltd. Co. Falls - Woman Lake
 by O.L.S. R.D. 1916 shown thus $\frac{1}{2}$ 1/2
 65 miles Surveyed by R.F. Owen, O.L.S. 1936
 JUL 16 1954
 RED LAKE, ONT.
 Compiled Nov. 1935



**PLAN OF
TROUT LAKE RIVER AREA,
AND
JOYCE LAKE & RIVER AREA.
DISTRICT OF KENORA & PATRICIA PORTION.**

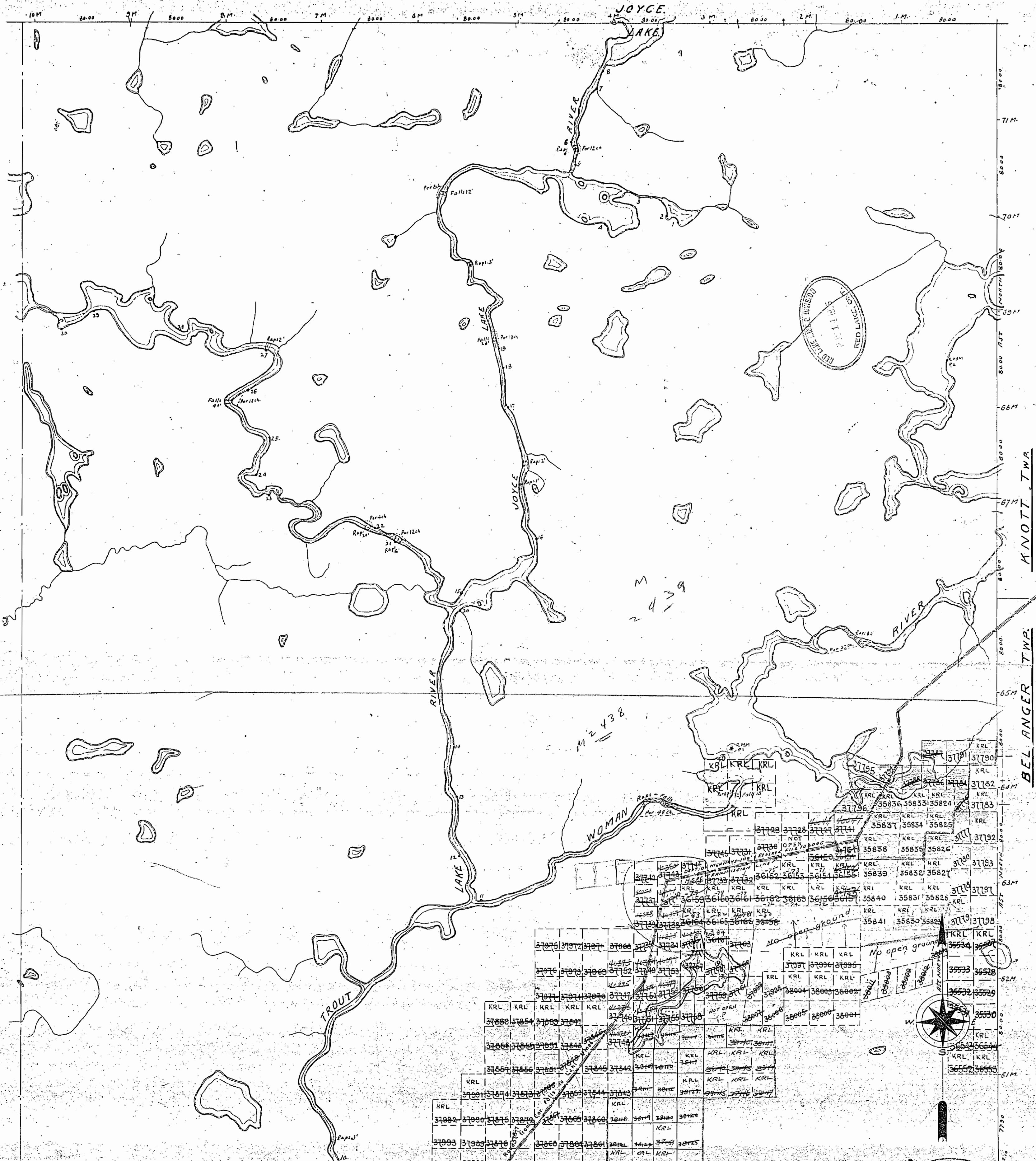
RED LAKE MINING DIVISION,
Scale: 40 chains to an inch.

M. 2213

East Bay of
East Meridian by D.S. & Co. 1920
North Base by G.S. Wright & Son, Assn., 1924
Traverse of Joyce Lake, Trout Lake River, Joyce Lake River by G.S. Wright & Son, Assn., 1927
Topographic Survey, Central District, Dominion Dept. of Interior
Other Lakes & Rivers from Aerial Survey, Topographic Survey, Dominion Dept. of Interior
C.O. Smith & Son, Ltd., 1928
Power Transmission Lines, Junction, Ontario, Canada, 1928
S.O.S. & Co., 1928

Compiled Nov. 1928

AVOTT TWP.
BELLANGER TWP.



PLAN OF
TROUT LAKE RIVER AREA,
AND
JOYCE LAKE & RIVER AREA.

DISTRICT OF KENORA, PATRICIA PORTION.
RED LAKE MINING DIVISION.

Scale: 40 chains to an inch.

M.2213

East Boundary of Joyce Lake by O.S. No. 1250
 North Boundary of Joyce Lake by O.S. No. 1250
 Traverse of Joyce Lake, Trout Lake River, Joyce Lake River by O.S. C.R. 1250
 (See Traverse monuments shown there) etc.
 Geographical Survey Control Traverse Monument, Dominion Dept. of Interior
 shown that R.L.M.
 Other Land & Rivers from Aerial Survey, Topographic Survey, Dominion Dept. of Interior
 & as shown on Trout Lake Sheet.
 Power Transmission Line, Jackson Station Consolidated Gold Mines, Ltd., Co. Falls, Woman's Lake
 by O.S. R. 1250 shown that 65 wire Surveyed by R.L.M. dated O.S. 1250
 Compiled Nov. 1955.

M-2213

2213

Carmichael Twp.

THE TOWNSHIP OF

FORD

DISTRICT OF COCHRANE

PORCUPINE MINING DIVISION

SCALE: 1-INCH 40 CHAINS

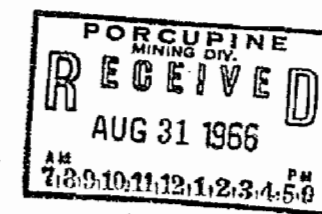
M 2213 4B

LEGEND

- PATENTED LAND Ⓟ
- CROWN LAND SALE C.S.
- LEASES Ⓛ
- LOCATED LAND Loc.
- LICENSE OF OCCUPATION L.O.
- MINING RIGHTS ONLY M.R.O.
- SURFACE RIGHTS ONLY S.R.O.
- ROADS —
- IMPROVED ROADS —
- KING'S HIGHWAYS —
- RAILWAYS —
- POWER LINES —
- MARSH OR MUSKEG —
- MINES X

NOTES

400' Reserve around all lakes & rivers to Dept. of Lands & Forests



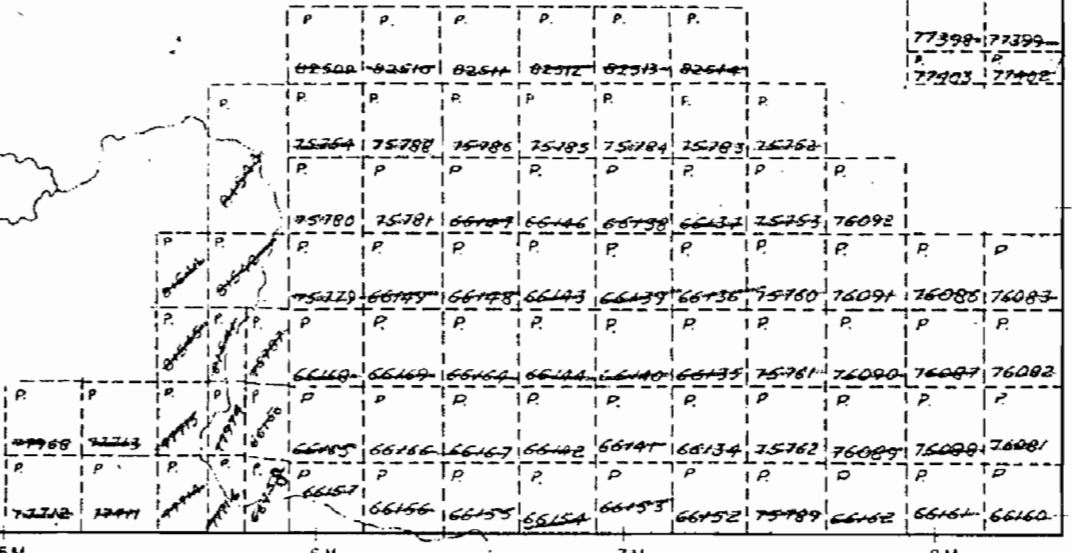
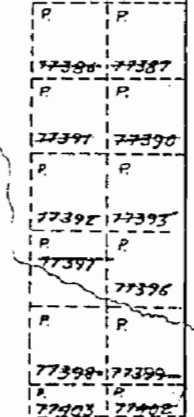
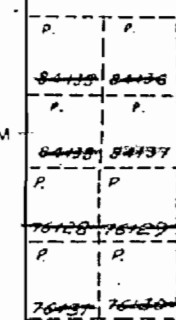
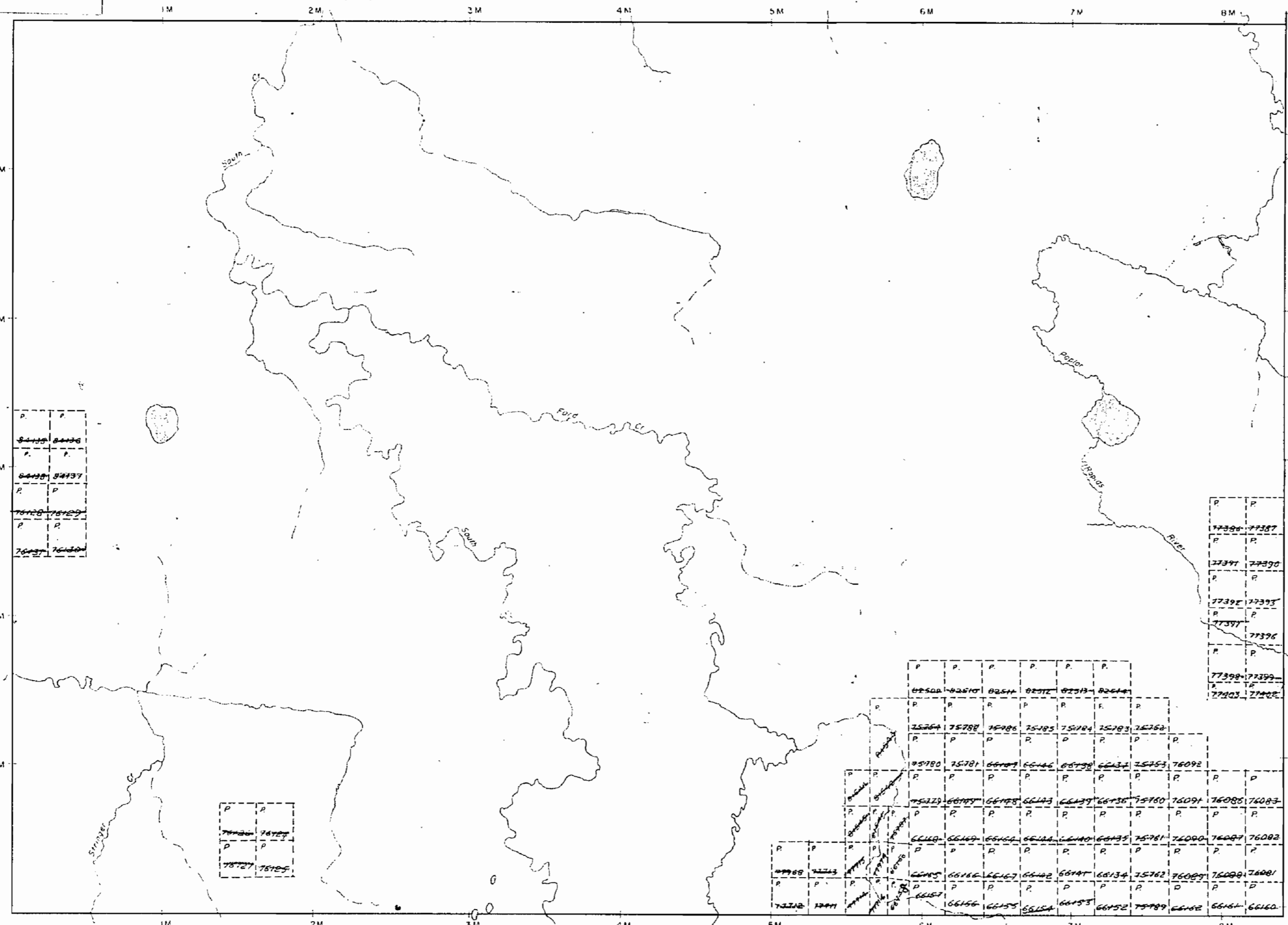
PLAN NO. - M-2213

DEPARTMENT OF MINES -ONTARIO-

Stringer Twp.

Laidlaw Twp.

Oke Twp.



2213

Carmichael Twp.

THE TOWNSHIP OF

FORD

DISTRICT OF COCHRANE

PORCUPINE MINING DIVISION

SCALE. 1-INCH = 40 CHAINS

LEGEND

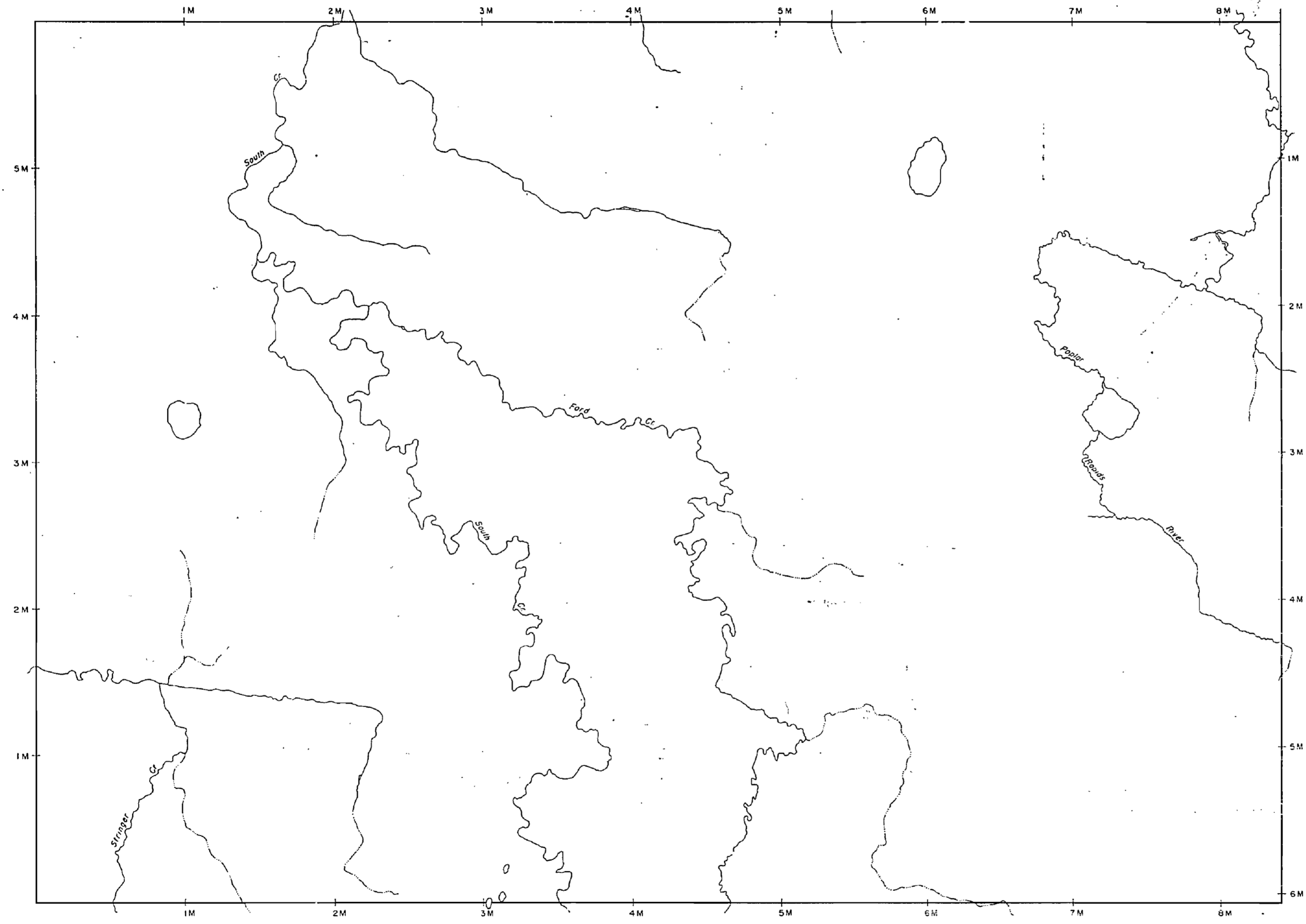
PATENTED LAND	⊙
CROWN LAND SALE	C.S.
LEASES	Ⓛ
LOCATED LAND	Loc.
LICENSE OF OCCUPATION	L.O.
MINING RIGHTS ONLY	M.R.O.
SURFACE RIGHTS ONLY	S.R.O.
ROADS	—
IMPROVED ROADS	—
KING'S HIGHWAYS	—
RAILWAYS	—
POWER LINES	—
MARSH OR MUSKEG	—
MINES	⌘
CANCELLED	C

NOTES

400' Reserve around all lakes & rivers to Dept. of Lands & Forests.

Stringer Twp.

Laidlaw Twp.



Oke Twp.

PLAN NO. - M-2213

DEPARTMENT OF MINES
-ONTARIO-

2213

Carmichael Twp.

THE TOWNSHIP OF
OF
FORD

DISTRICT OF COCHRANE

PORCUPINE MINING DIVISION

SCALE: 1-INCH = 40 CHAINS

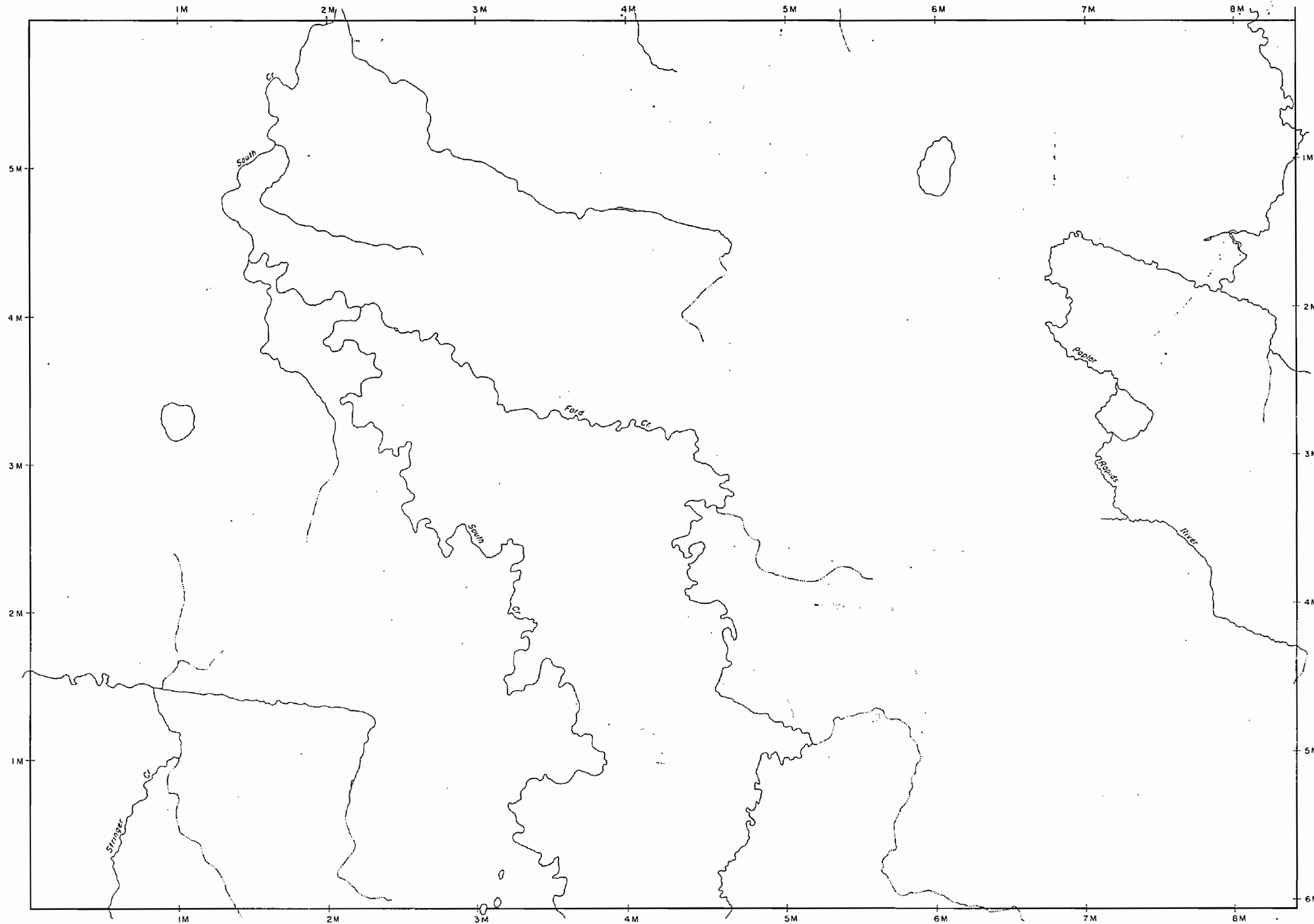
LEGEND

PATENTED LAND	Ⓟ
CROWN LAND SALE	C.S.
LEASES	Ⓛ
LOCATED LAND	Loc.
LICENSE OF OCCUPATION	L.O.
MINING RIGHTS ONLY	M.R.O.
SURFACE RIGHTS ONLY	S.R.O.
ROADS	— — — — —
IMPROVED ROADS	— — — — —
KING'S HIGHWAYS	— — — — —
RAILWAYS	— — — — —
POWER LINES	— — — — —
MARSH OR MUSKEG	— — — — —
MINES	Ⓜ
CANCELLED	Ⓧ

NOTES

400' Reserve around all lakes & rivers to Dept. of Lands & Forests.

Stringer Twp.



Laidlaw Twp.

Oke Twp.

PLAN NO. - M-2213

DEPARTMENT OF MINES
-ONTARIO-