



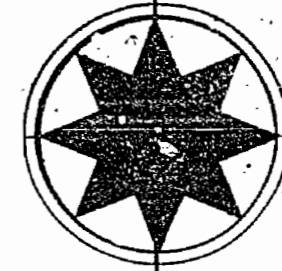
1720

LYBFEIGH TMB W-1150

# FRALEIGH TP.

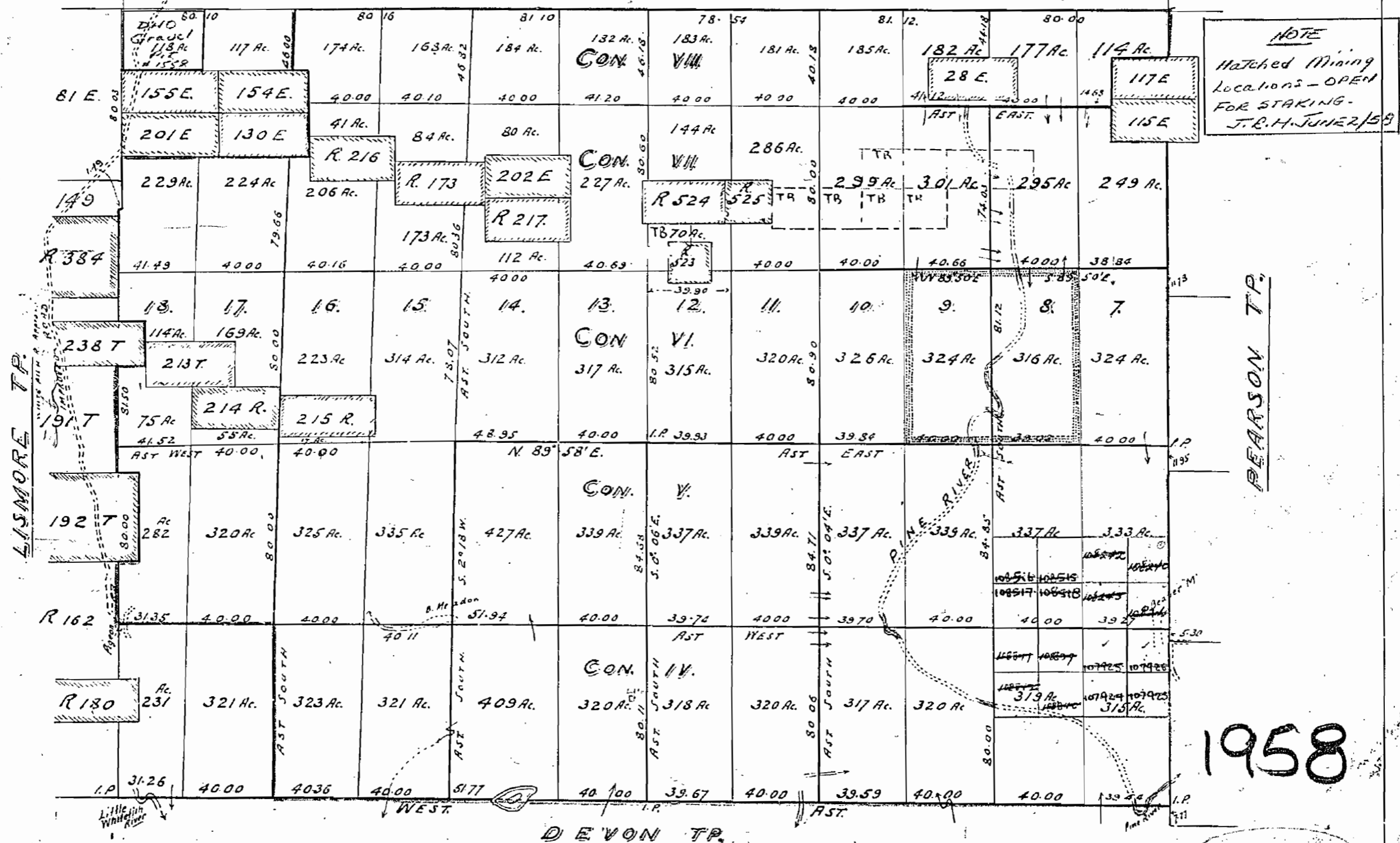
THUNDER BAY DISTRICT.

Scale: 40 Chs = 1 Inch.



LYBSTER TP.

GILLIES



**NOTE**  
 Matched Mining  
 Locations - OPEN  
 FOR STAKING -  
 J.R.H. JUNE 2/58

LISMORE TP.

PEARSON TP.

DEVON TP.

**Note**  
 That portion of Fraleigh Tp. enclosed in heavy lines was surveyed in 1914  
 by E.R. Bingham, O.L.S.  
 Remainder of Fraleigh Tp. was surveyed in 1908 by R.M. Paulin O.L.S.

**Note:**  
 GRAVEL WITHIN LOTS STIPPLED THUS: [Symbol]  
 RESERVED TO ONTARIO DEPT. OF HIGHWAYS. FILE: 108478.

SUBDIVISION ANNULLED - SEE LETTER J.R.MCGINN - Nov. 14/63

Improved roads shown thus: [Symbol] Surveyed  
 and instructions by R.S. Kirkup O.L.S. 1932.

HATCHING AREA ON LOCATIONS - OPEN FOR STAKING  
 SEE LETTER J.R.MCGINN JUNE 2/58

1958

M 1720

97

1720

# FRALEIGH TP.

THUNDERBAY DISTRICT.

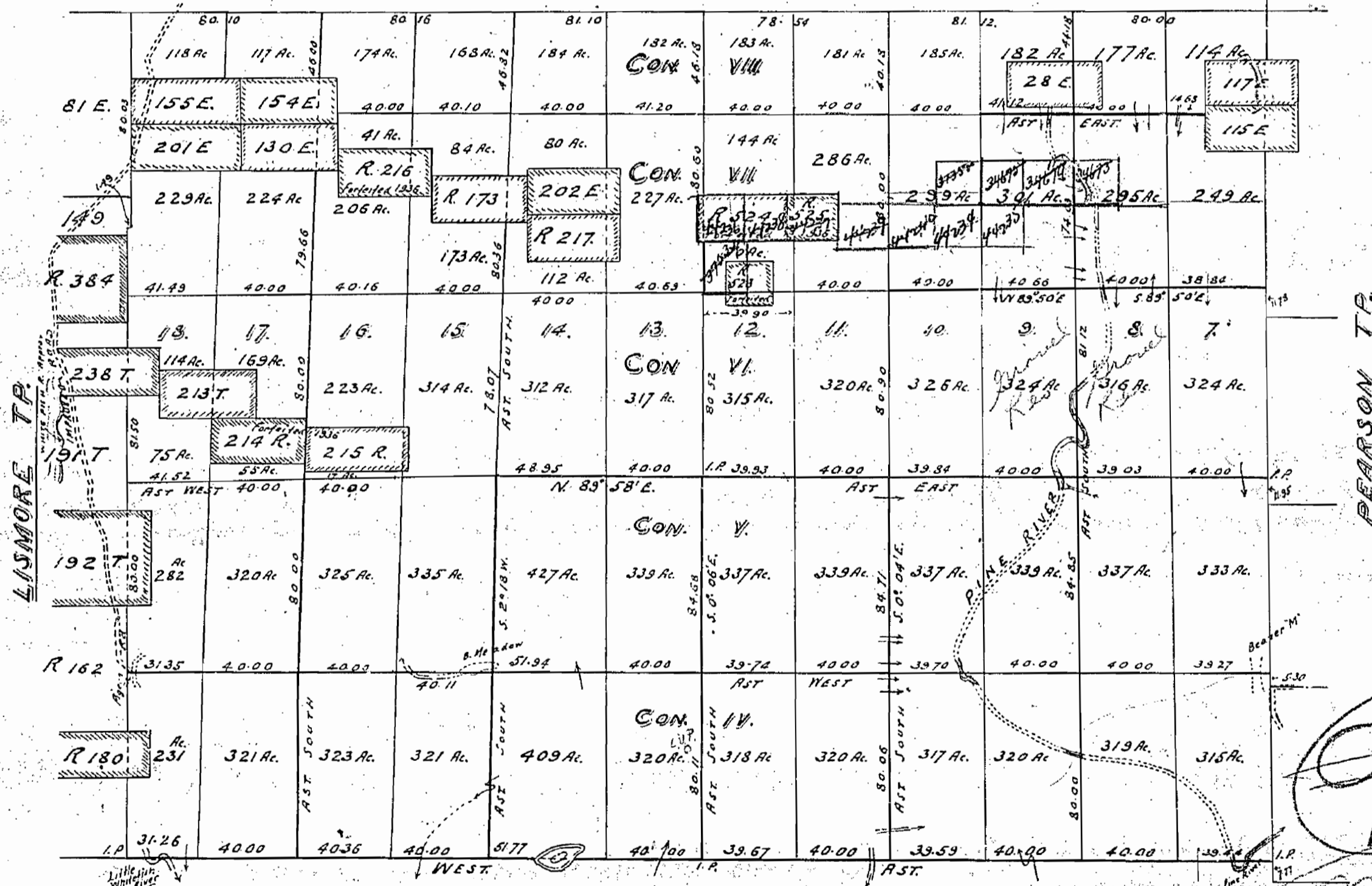
Scale: 40 Chs = 1 Inch.



T.B. 12

LYBSTER TP.

GILLIES



NOTE  
That portion of Fraleigh Tp enclosed in heavy lines was surveyed in 1914  
by E.K. Bingham, O.L.S.  
Remainder of Fraleigh Tp was surveyed in 1908 by F.W. Paulin O.L.S.

Improved roads shown thus == Surveyed  
under instructions by R.S. Kirkup O.L.S. 1932.

97  
M1720  
RECEIVED  
LAND DIVISION

OCT 11 9 45 AM 1945

**DISPOSITION OF CROWN LANDS**

TYPE OF DOCUMENT	SYMBOL
PATENT, SURFACE & MINING RIGHTS	●
" SURFACE RIGHTS ONLY	○
" MINING RIGHTS ONLY	○
LEASE, SURFACE & MINING RIGHTS	■
" SURFACE RIGHTS ONLY	■
" MINING RIGHTS ONLY	■
LICENCE OF OCCUPATION	◄
ORDER-IN-COUNCIL	⊙
RESERVATION	⊙
CANCELLED	⊙
SAND & GRAVEL	⊙

NOTE: MINING RIGHTS IN PARCELS PATENTED PRIOR TO MAY 6, 1913, VESTED IN ORIGINAL PATENTEE BY THE PUBLIC LANDS ACT, R.S.O. 1970, CHAP. 380, SEC. 63, SUBSEC 1.

**REFERENCES**

**SAND & GRAVEL**

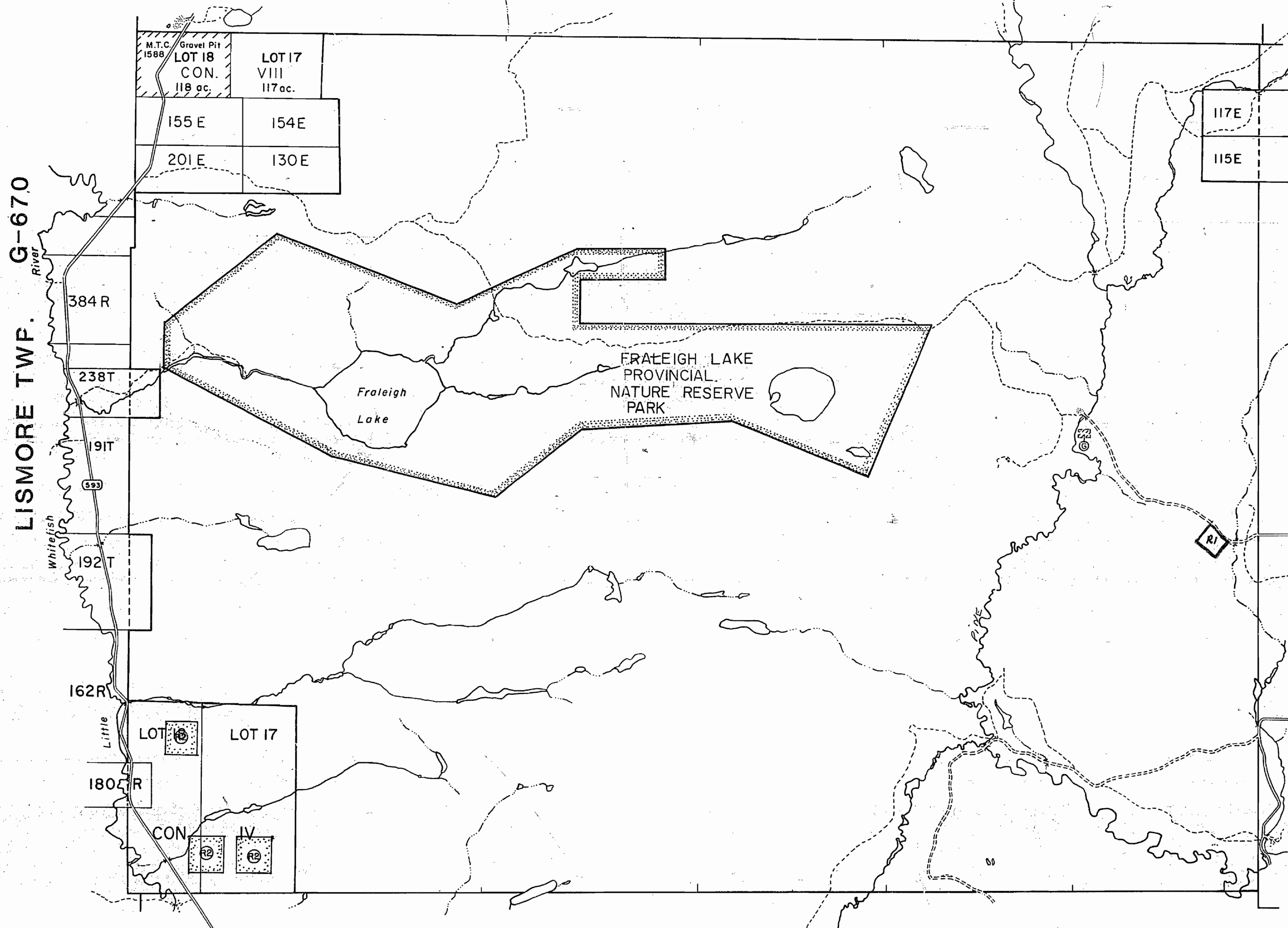
**AREAS WITHDRAWN FROM DISPOSITION**

- M.R.O. - MINING RIGHTS ONLY
- S.R.O. - SURFACE RIGHTS ONLY
- M.+S. - MINING AND SURFACE RIGHTS

Description	Order No.	Date	Disposition	File
MNR DUMP SITE	W-54/87		S.R.O.	
MINING AND SURFACE RIGHTS WITHDRAWN FROM STAKING ORDER WTR 23/94 NWR DATED 06/05/94 TO PROTECT FOREST RESEARCH SAMPLE PLOTS.				

THE INFORMATION THAT APPEARS ON THIS MAP HAS BEEN COMPILED FROM VARIOUS SOURCES AND ACCURACY IS NOT GUARANTEED. THOSE WISHING TO STAKE MINING CLAIMS SHOULD CONSULT WITH THE MINING RECORDER, MINISTRY OF NORTHERN DEVELOPMENT AND MINES, FOR ADDITIONAL INFORMATION ON THE STATUS OF THE LANDS SHOWN HEREON.

LYBSTER TWP. G-671



DEVON TWP. G-650

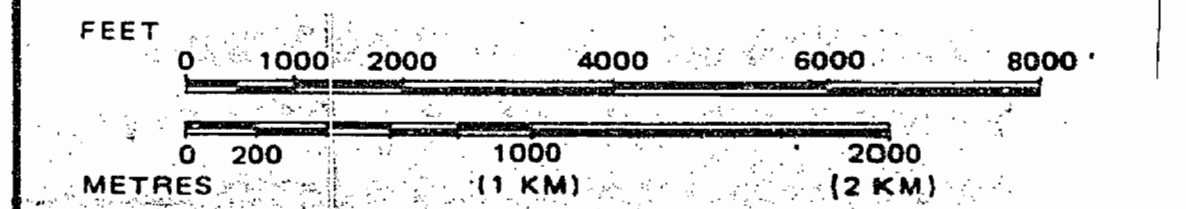
PEARSON TWP. G 682

**REFERENCES**

**LEGEND**

- HIGHWAY AND ROUTE No.
- OTHER ROADS
- TRAILS
- SURVEYED LINES:
  - TOWNSHIPS, BASE LINES, ETC.
  - LOTS, MINING CLAIMS, PARCELS, ETC.
- UNSURVEYED LINES:
  - LOT LINES
  - PARCEL BOUNDARY
  - MINING CLAIMS ETC.
- RAILWAY AND RIGHT OF WAY
- UTILITY LINES
- NON-PERENNIAL STREAM
- FLOODING OR FLOODING RIGHTS
- SUBDIVISION OR COMPOSITE PLAN
- RESERVATIONS
- ORIGINAL SHORELINE
- MARSH OR MUSKEG
- MINES
- TRAVERSE MONUMENT
- LAND USE PERMITS FOR COMMERCIAL TOURISM, OUTPOST CAMPS.

SCALE: 1 INCH = 40 CHAINS



**TOWNSHIP**

**FRALEIGH**

M.N.R. ADMINISTRATIVE DISTRICT  
**THUNDER BAY**

MINING DIVISION  
**THUNDER BAY**

LAND TITLES / REGISTRY DIVISION  
**THUNDER BAY**

Ministry of Natural Resources  
Land Management Branch

Ontario  
DECEMBER 8, 1986

Date MARCH 23, 1982.

Number  
**G-656**

