

1257

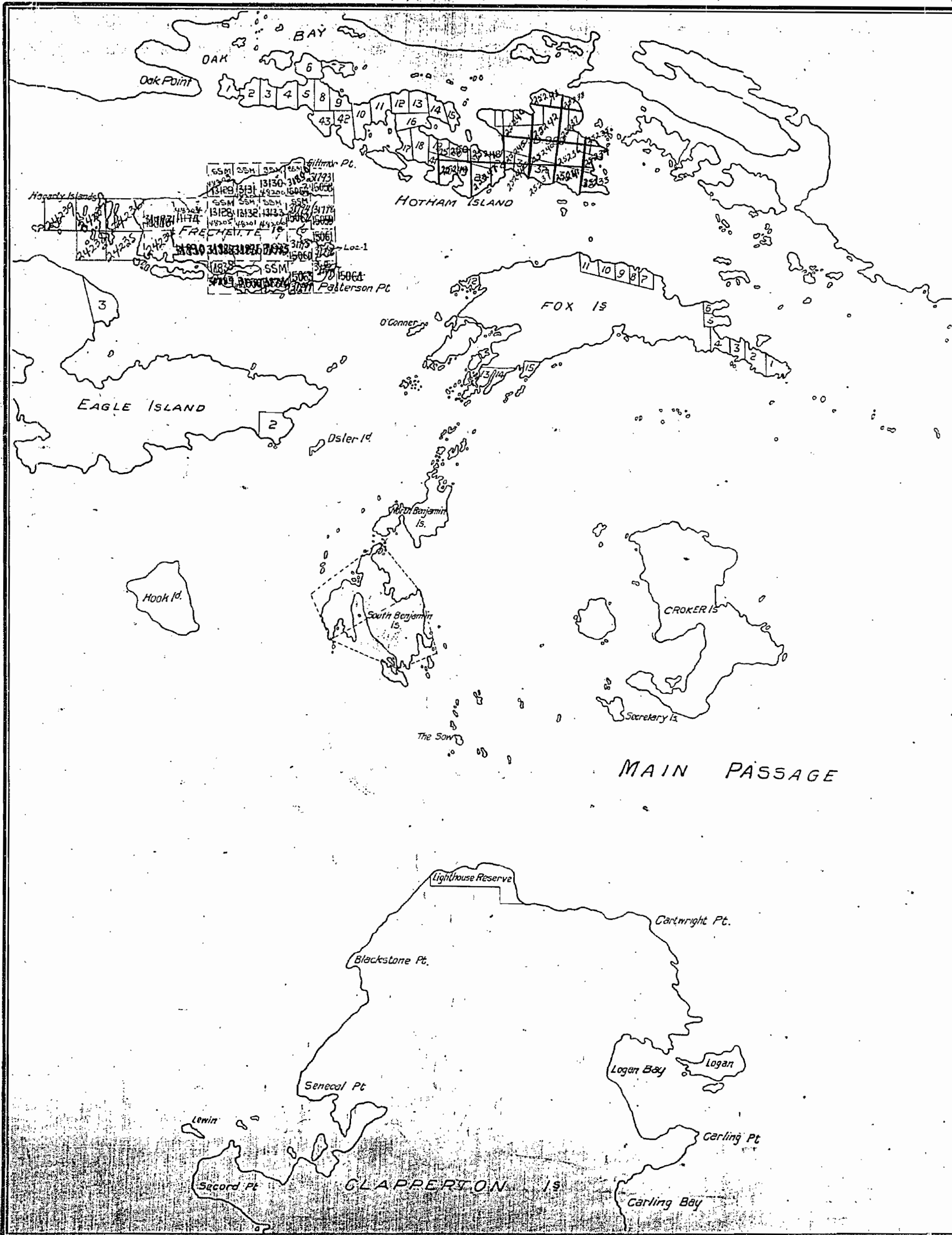
OFFICE MAP

Frechette Isl.

22° 30' S 125° 30' W

Hotham Isl.

M. 1257



FRECHETTE ISLAND

SUDBURY RECEIVED
FEB 1959
MINING DIVISION

FRECHETTE ISLAND
M. 1257

EAST PART OF HOTHAM ISLAND Staked

Not Staked



SAGE

MAIN LAND

Carling Pt

Carling Bay

CLAPPERTON IS

Lewis

Secord Pt

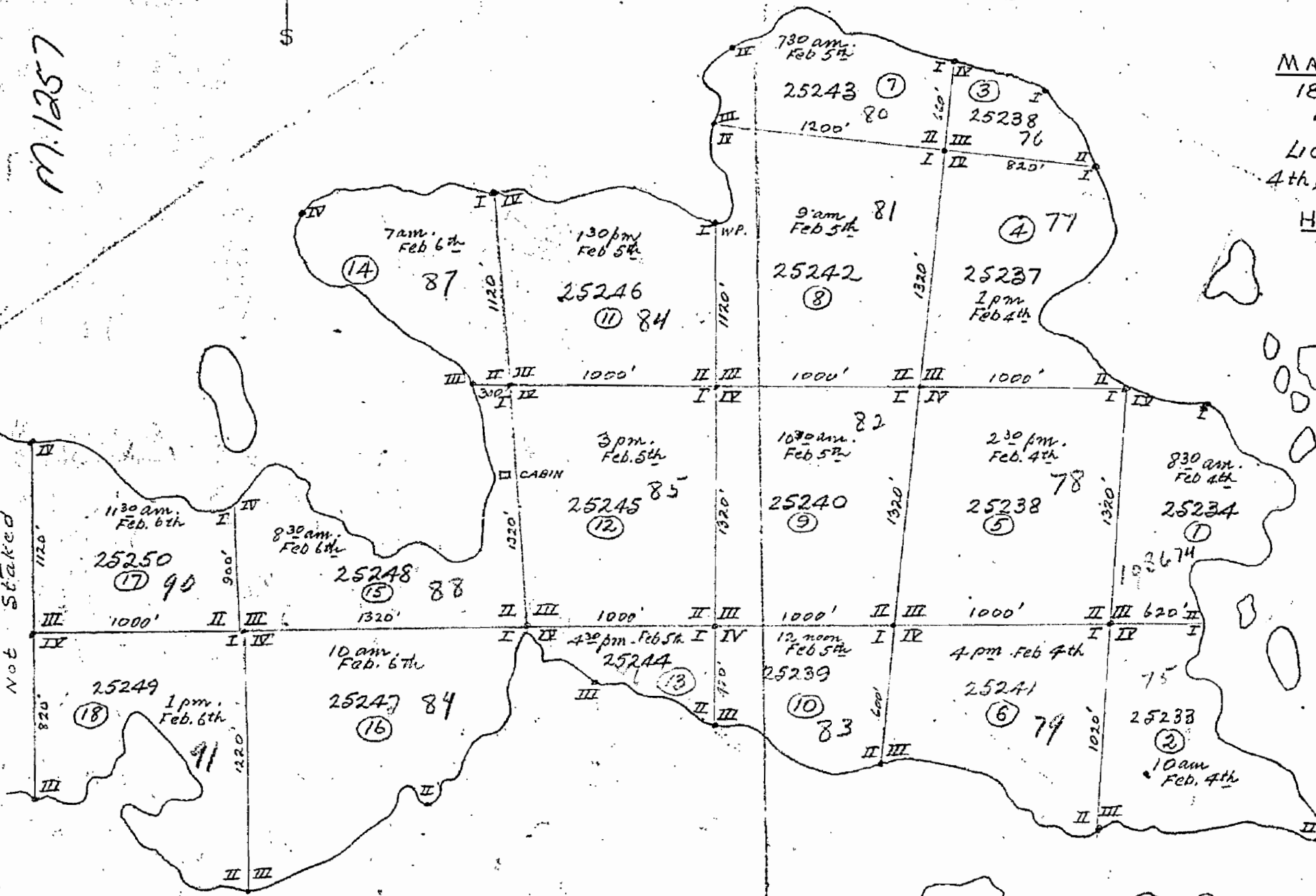
MASTER SKETCH
18 claims staked
by A. Hopkins
Lic. No. E. 12440
4th, 5th & 6th Feb. 1959

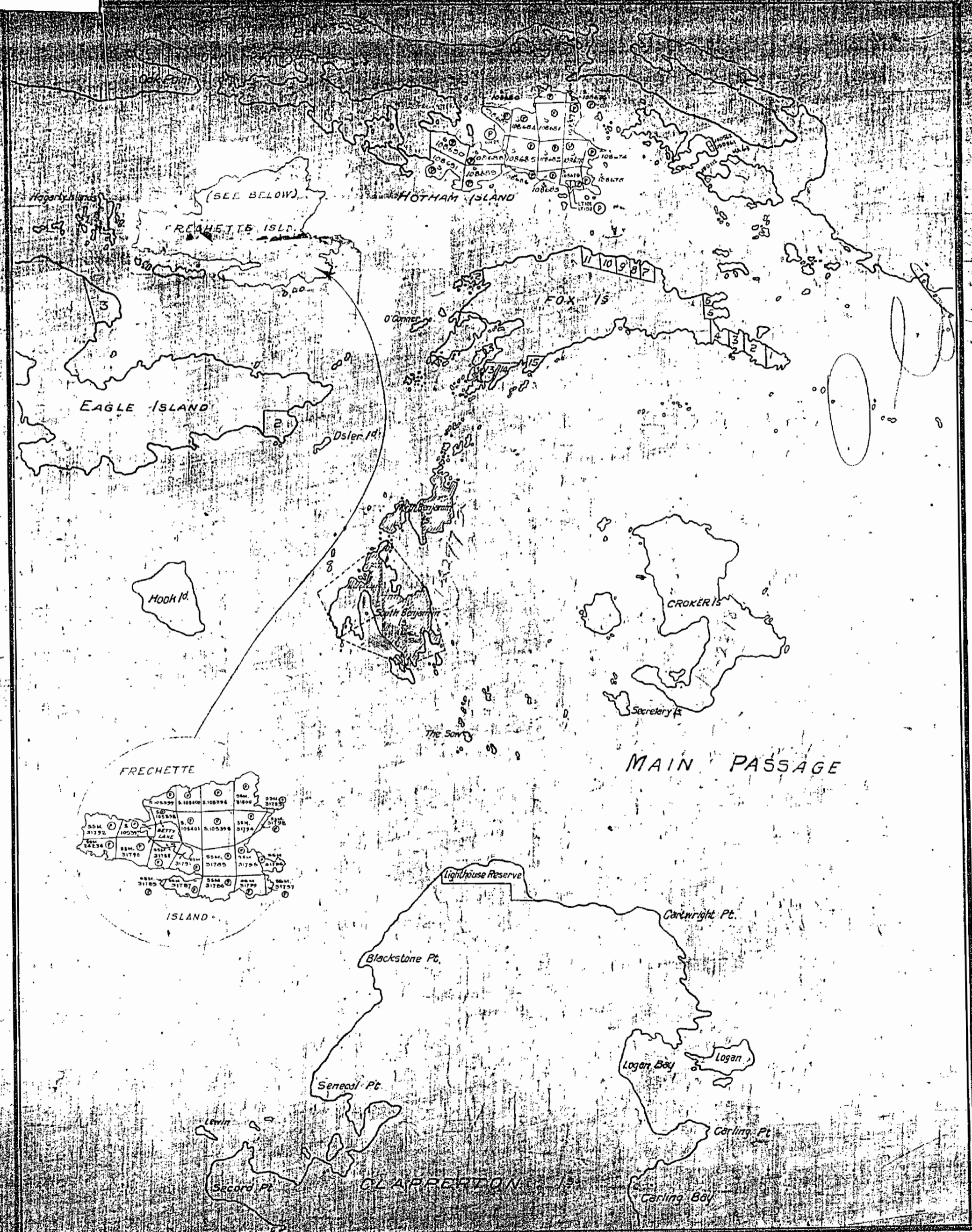
HOTHAM ISLAND
North Channel
Lake Huron, Ont.

Claim Nos are former S.S.M. Nos.

Scale: 1" = 500'

A. Hopkins



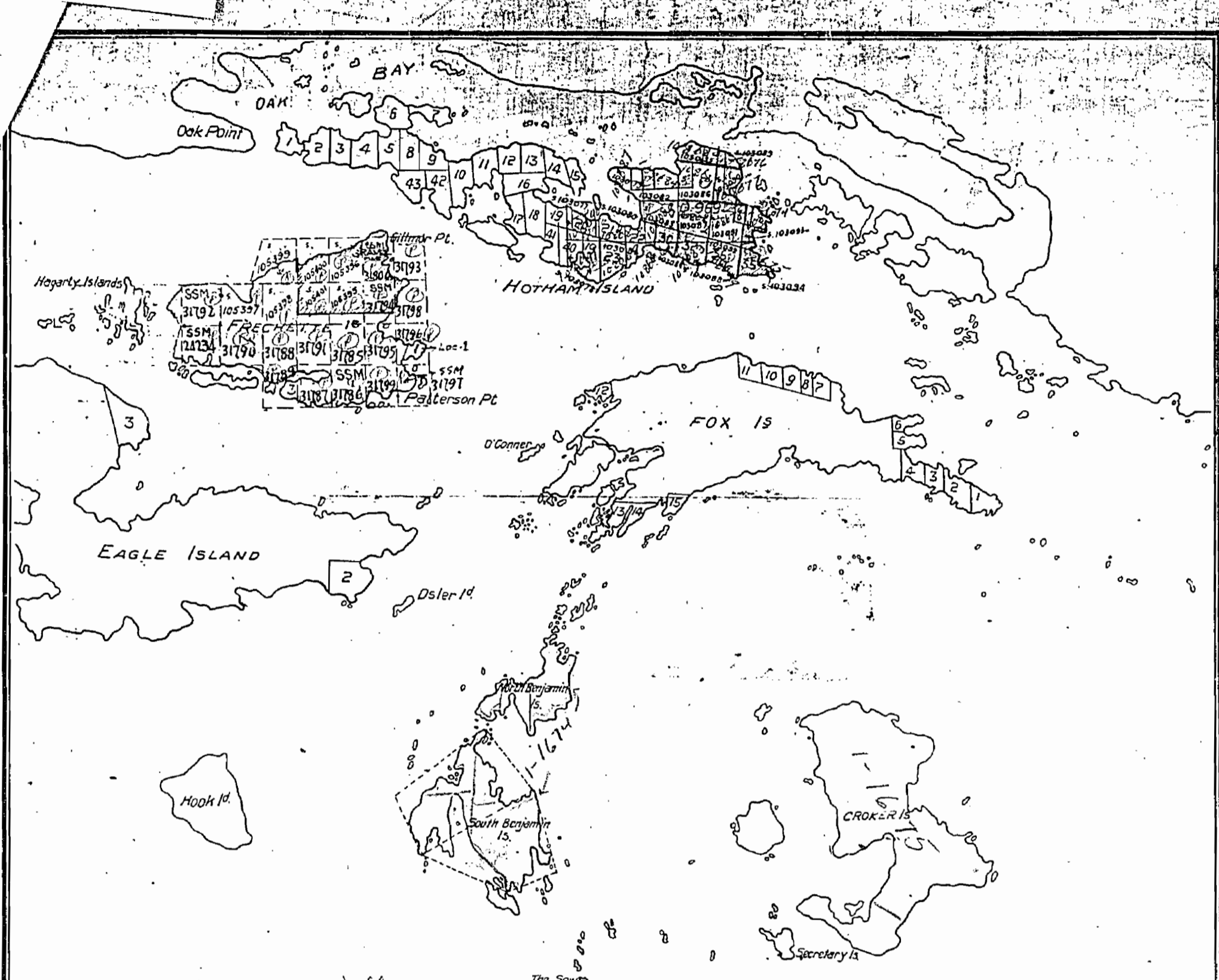


1257

FRECHETTE ISLANDS

FRECHETTE ISLAND

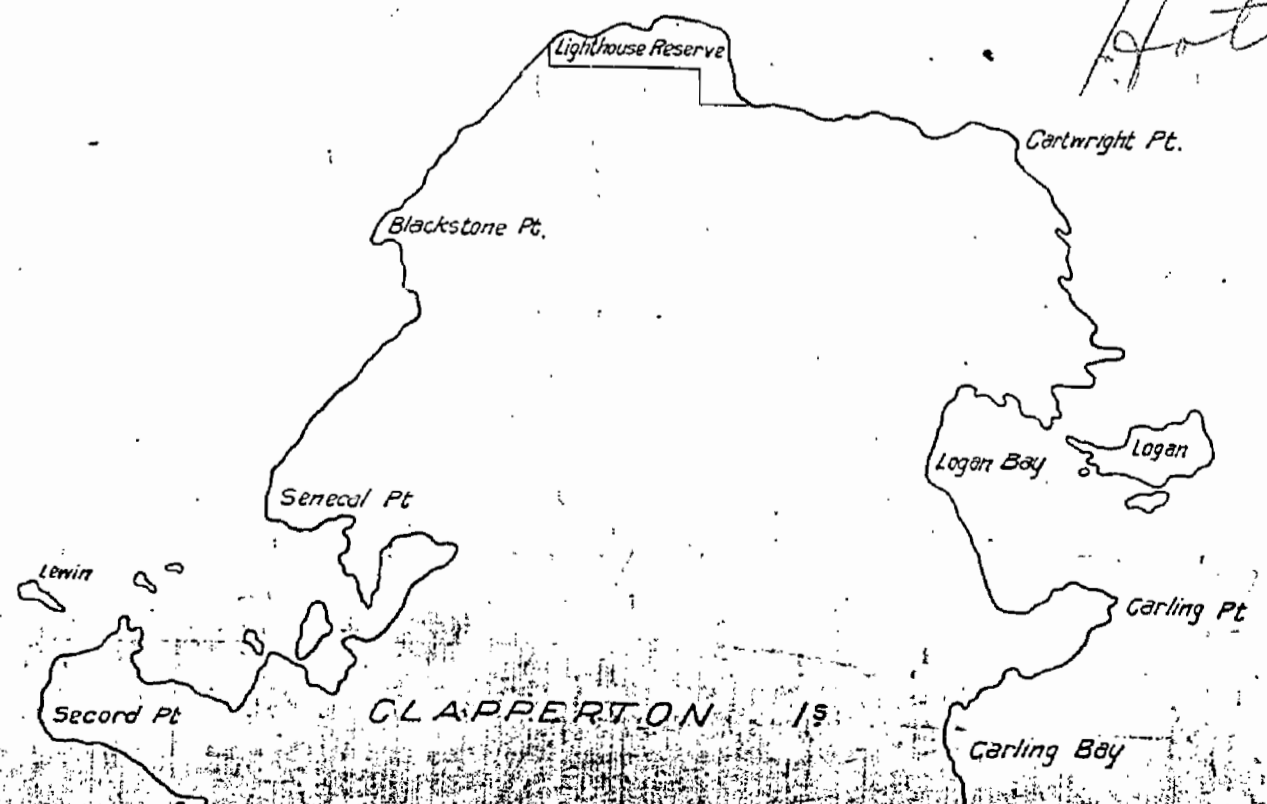
M. 1257



Islands in Lake Huron within
 from sketch Nov. 23/26
 Sect. 39 Sub. (C)

MAIN PASSAGE

Frechette Is
Hotham Is



SUDBURY
 RECEIVED
 FEB 1958
 MINING DIVISION

AREA OF
FRECHETTE ISLAND

DISTRICT OF
ALGOMA - MANITOULIN

SUDBURY
MINING DIVISION

SCALE: 1-INCH = 40 CHAINS

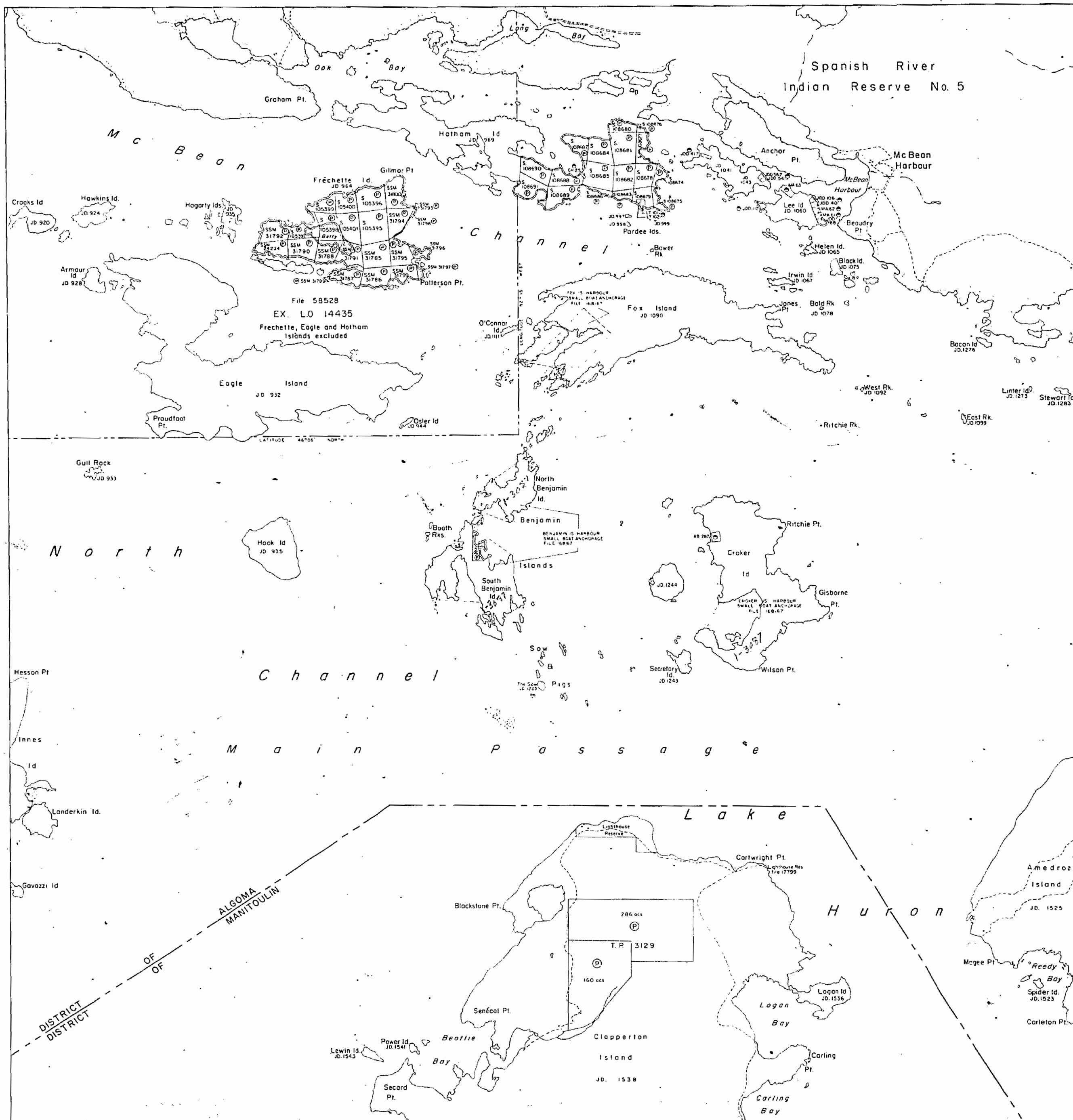
LEGEND

PATENTED LAND	Ⓟ
CROWN LAND SALE	C.S.
LEASES	Ⓛ
LOCATED LAND	Loc.
LICENSE OF OCCUPATION	L.O.
MINING RIGHTS ONLY	M.R.O.
SURFACE RIGHTS ONLY	S.R.O.
ROADS	—
IMPROVED ROADS	—
KING'S HIGHWAYS	—
RAILWAYS	—
POWER LINES	—
MARSH OR MUSKEG	—
MINES	Ⓜ
CANCELLED	ⓧ

NOTES

400' surface rights reservation around all lakes and rivers.

Summer resort locations patented for surface rights only indicated thus: Ⓟ



PLAN NO. - **M-1257**

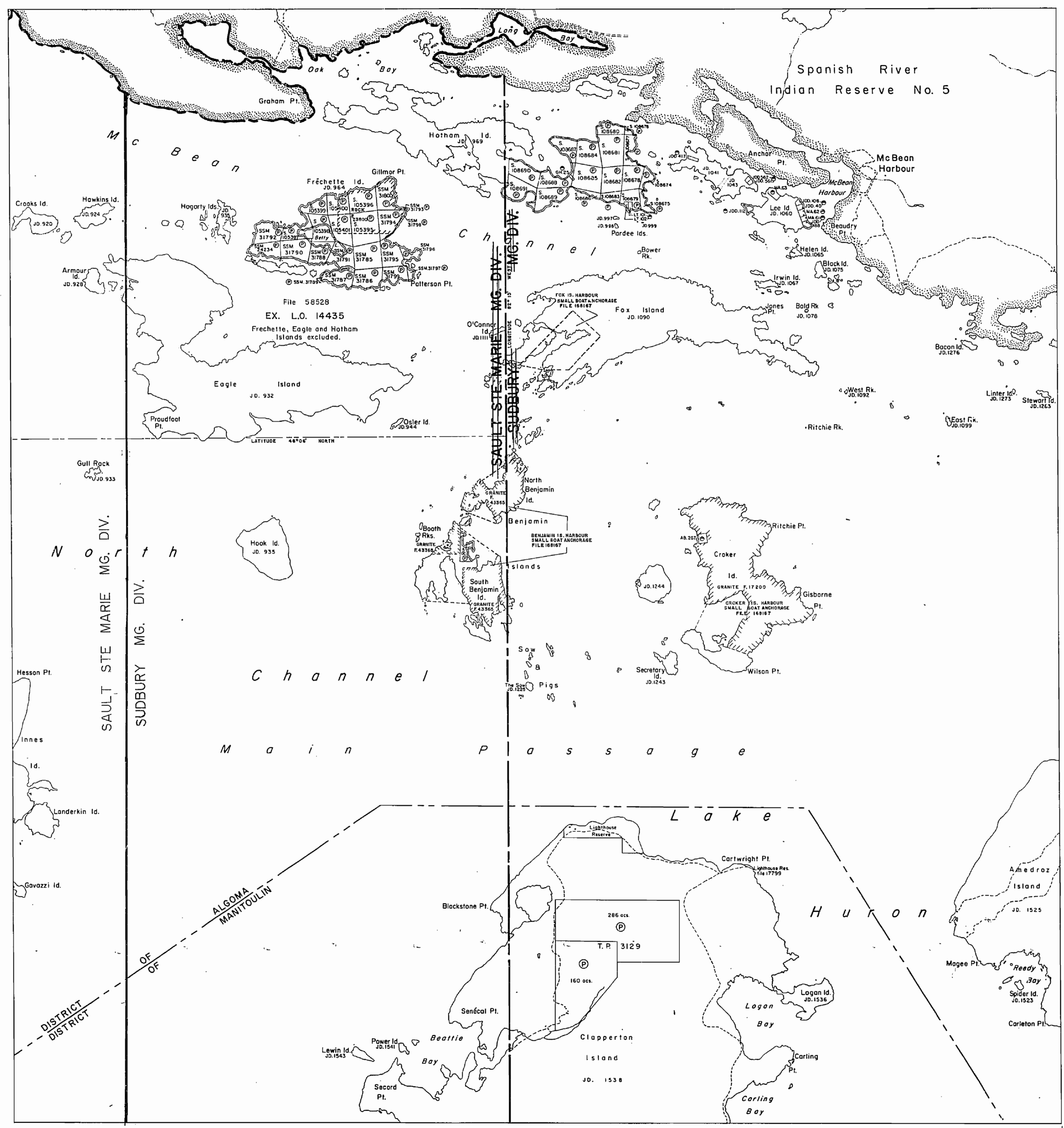
DEPARTMENT OF MINES
- ONTARIO -

June 1974

M1525

M1525

M1525



AREA OF
FRECHETTE ISLAND
 DISTRICT OF
 ALGOMA - MANITOULIN
 SAULT STE. MARIE &
 SUDBURY
 MINING DIVISION
 SCALE: 1-INCH = 40 CHAINS

LEGEND

PATENTED LAND	⊙
CROWN LAND SALE	C.S.
LEASES	⊖
LOCATED LAND	Loc.
LICENSE OF OCCUPATION	L.O.
MINING RIGHTS ONLY	M.R.O.
SURFACE RIGHTS ONLY	S.R.O.
ROADS	
IMPROVED ROADS	—
KING'S HIGHWAYS	—
RAILWAYS	—
POWER LINES	—
MARSH OR MUSKEG	—
MINES	—
CANCELLED	—

NOTES

400' surface rights reservation around all lakes and rivers.

Summer resort locations patented for surface rights only indicated thus: ⊙

Islands in Lake Huron WITHDRAWN FROM STAKING. File 58528.

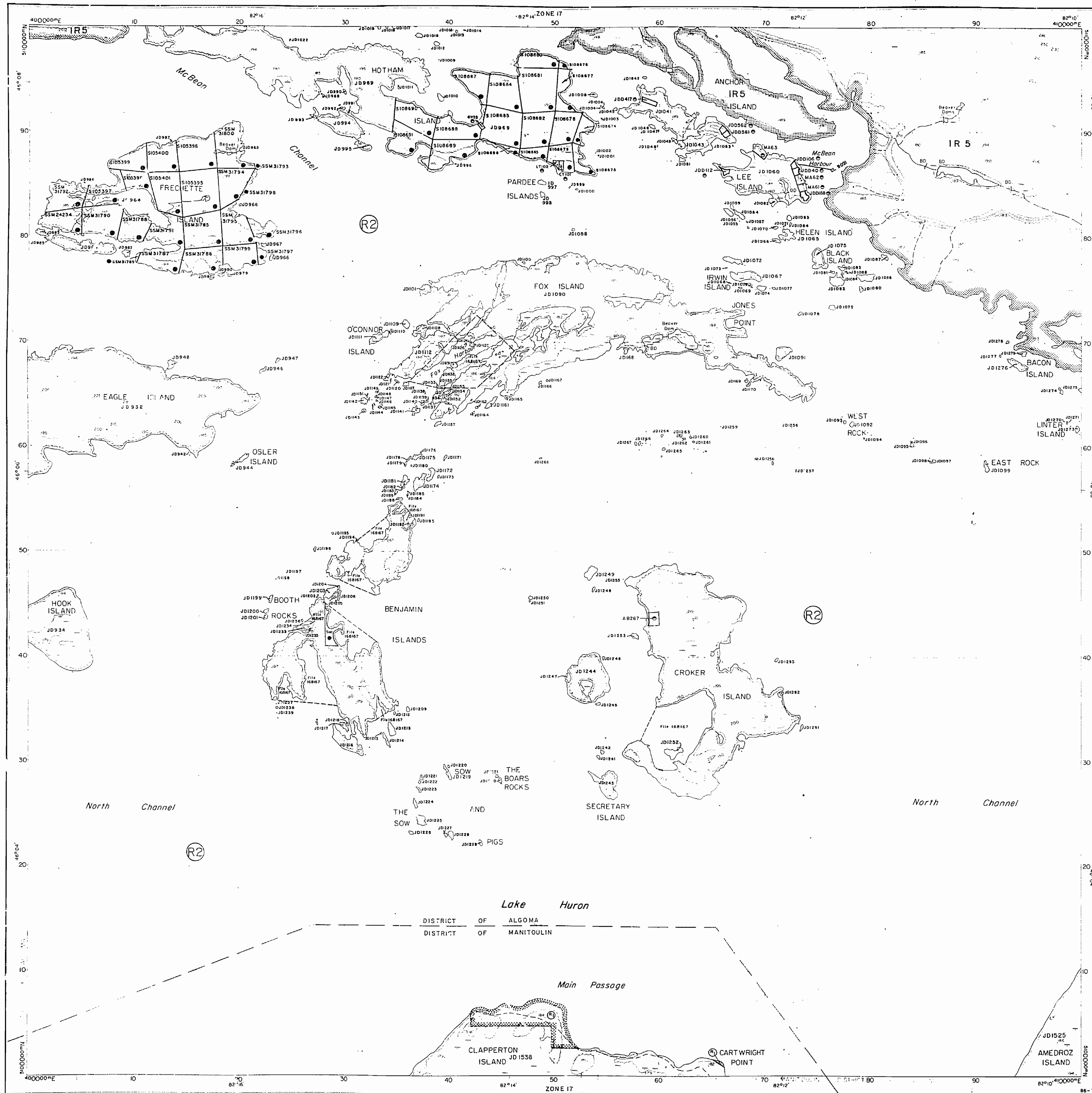
Land under the waters of Lake Huron withdrawn from staking by Order in Council dated Apr 30, 1912

No Quarry Permits to be issued on Any Islands on this Mylar (Linen). Any Enquiries to be directed to J.C. Smith (Mining Lands Section) See Letter of October 15, 1972

THE INFORMATION THAT APPEARS ON THIS MAP HAS BEEN COMPILED FROM VARIOUS SOURCES; AND ACCURACY IS NOT GUARANTEED. THOSE WISHING TO STAKE MINING CLAIMS SHOULD CONSULT WITH THE MINING RECORDER, MINISTRY OF NORTHERN DEVELOPMENT AND MINES, FOR ADDITIONAL INFORMATION ON THE STATUS OF THE LANDS SHOWN HEREON.

NATIONAL TOPOGRAPHIC SERIES 41J1
 PLAN NO.- **M-1257**
 ONTARIO
 MINISTRY OF NATURAL RESOURCES
 SURVEYS AND MAPPING BRANCH

46°01'05"
 82°09'25" approx.

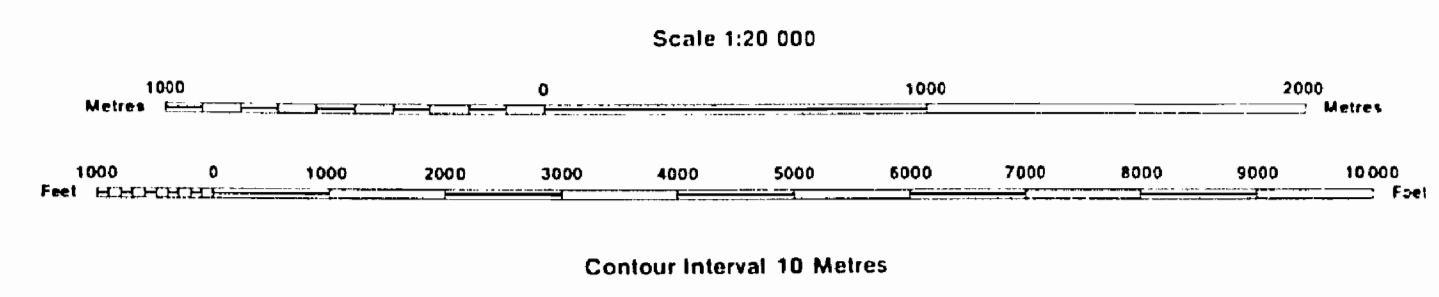


INDEX TO LAND DISPOSITION

PLAN
G-2946
AREA

M.N.R. ADMINISTRATIVE DISTRICT
ESPANOLA
MINING DIVISION
SUDBURY
LAND TITLES/REGISTRY DIVISION
ALGOMA / MANITOULIN

THE INFORMATION THAT APPEARS ON THIS MAP HAS BEEN COMPILED FROM VARIOUS SOURCES, AND ACCURACY IS NOT GUARANTEED. THOSE WISHING TO STAKE MINING CLAIMS SHOULD CONSULT WITH THE MINING RECORDER, MINISTRY OF NORTHERN DEVELOPMENT AND MINES, FOR ADDITIONAL INFORMATION ON THE STATUS OF THE LANDS SHOWN HEREON.



NO CLAIMS BE RECORDED ON THIS PLAN

AREAS WITHDRAWN FROM DISPOSITION

MRO - Mining Rights Only
SRO - Surface Rights Only
M - S - Mining and Surface Rights

Description	Order No.	Date	Disposition	File
LIGHTHOUSE RESERVE			S.R.O.	17799
SEC.35	W-3-30/97 NER	23/02/97	M-S	195150

SYMBOLS

Boundary
Township, Meridian, Baseline
Road allowance; surveyed
shoreline
Lot/Concession; surveyed
unsurveyed
Parcel; surveyed
unsurveyed
Right-of-way; road
railway
utility
Reservation
Cliff, Pit, Pile
Contour
Interpolated
Approximate
Depression
Control point (horizontal)
Flooded land
Mine head frame
Pipeline (above ground)
Railway; single track
double track
abandoned
Road; highway, county, township
access
trail, bush
Shoreline (original)
Transmission line
Wooded area

NOTES

ISLANDS IN LAKE HURON ARE WITHDRAWN FROM STAKING. FILE - 58528

LAND UNDER THE WATERS OF LAKE HURON IS WITHDRAWN FROM STAKING BY ORDER IN COUNCIL DATED APRIL 30, 1992

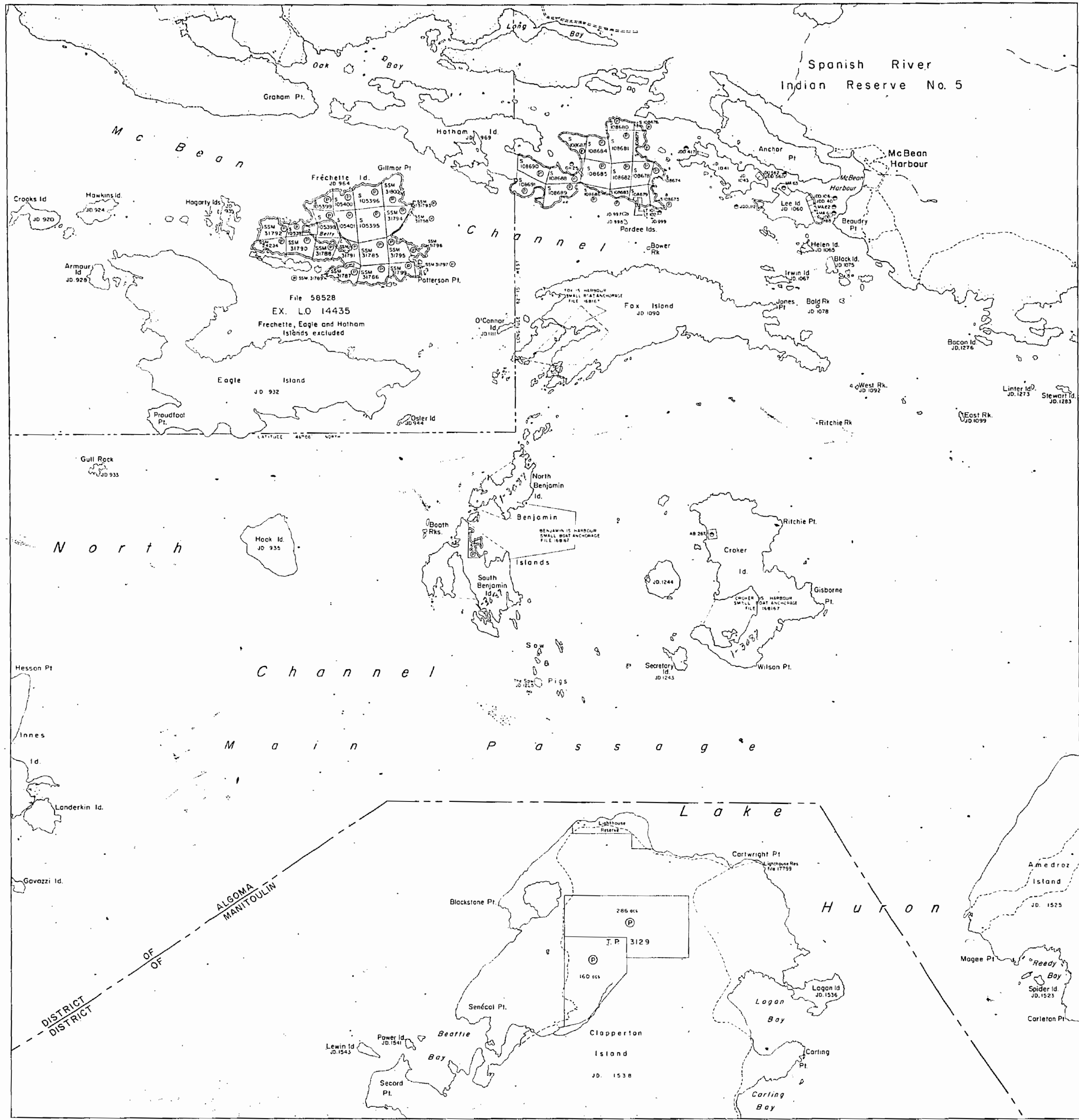
400 SURFACE RIGHTS RESERVATION AROUND ALL LAKES AND RIVERS

FILE 168167 - SMALL BOAT ANCHORAGES - PUBLIC LANDS ACT.

DISPOSITION OF CROWN LANDS

Patent
Surface & Mining Rights
Surface Rights Only
Mining Rights Only
Lease
Surface & Mining Rights
Surface Rights Only
Mining Rights Only
Licence of Occupation
Order-in-Council
Cancelled
Reservation
Sand & Gravel

STATE OF ONTARIO
MINING RECORDERS OFFICE
IN SERVICE OCT. 13/93



AREA OF
FRECHETTE ISLAND

DISTRICT OF
ALGOMA - MANITOULIN

SUDBURY
MINING DIVISION

SCALE: 1-INCH = 40 CHAINS

LEGEND

PATENTED LAND	Ⓟ
CROWN LAND SALE	C.S.
LEASES	Ⓛ
LOCATED LAND	LOC.
LICENSE OF OCCUPATION	L.O.
MINING RIGHTS ONLY	M.R.O.
SURFACE RIGHTS ONLY	S.R.O.
ROADS	—
IMPROVED ROADS	—
KING'S HIGHWAYS	—
RAILWAYS	—
POWER LINES	—
MARSH OR MUSKEG	—
MINES	—
CANCELLED	—

NOTES

400' surface rights reservation around all lakes and rivers.

Summer resort locations patented for surface rights only indicated thus: Ⓟ

PLAN NO.- **M-1257**

DEPARTMENT OF MINES
- ONTARIO -

FRECHETTE ISLAND

SUDBURY RECEIVED
FEB. 1958
MINING DIVISION

SAGE
Frechette Is.
Hotham Is.

FRECHETTE ISLAND
M. 1257

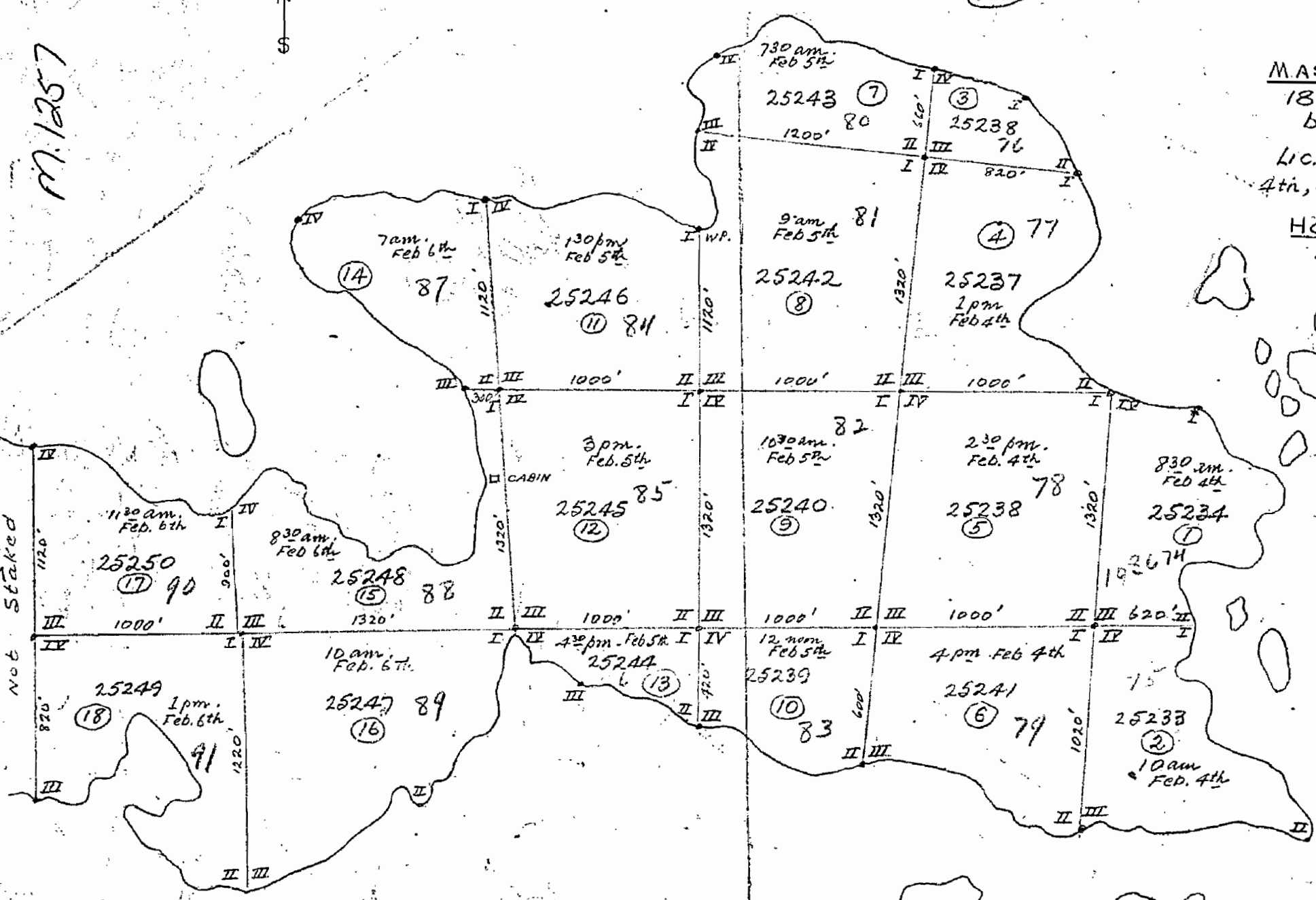
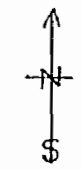
MASTER SKETCH
18 claims staked
by A. Hopkins
Lic. No. E. 12440
4th, 5th & 6th Feb. 1959

HOTHAM ISLAND
North Channel
Lake Huron, Ont.

CLARKEPTON IS.

EAST PART OF HOTHAM ISLAND

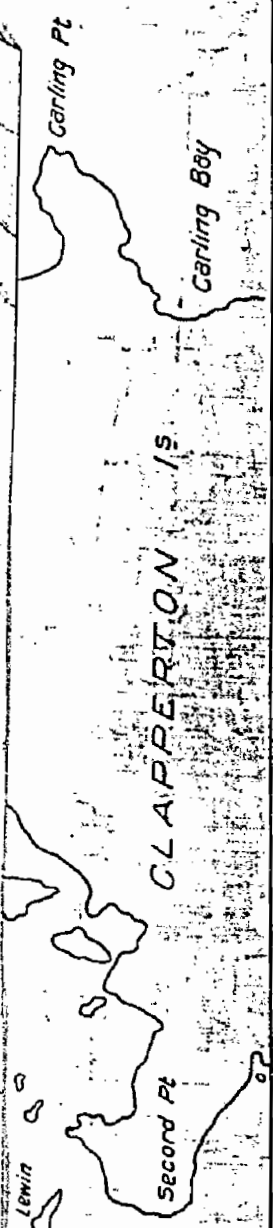
Not Staked



Claim Nos are former S.S.M. Nos.

Scale: 1" = 500'

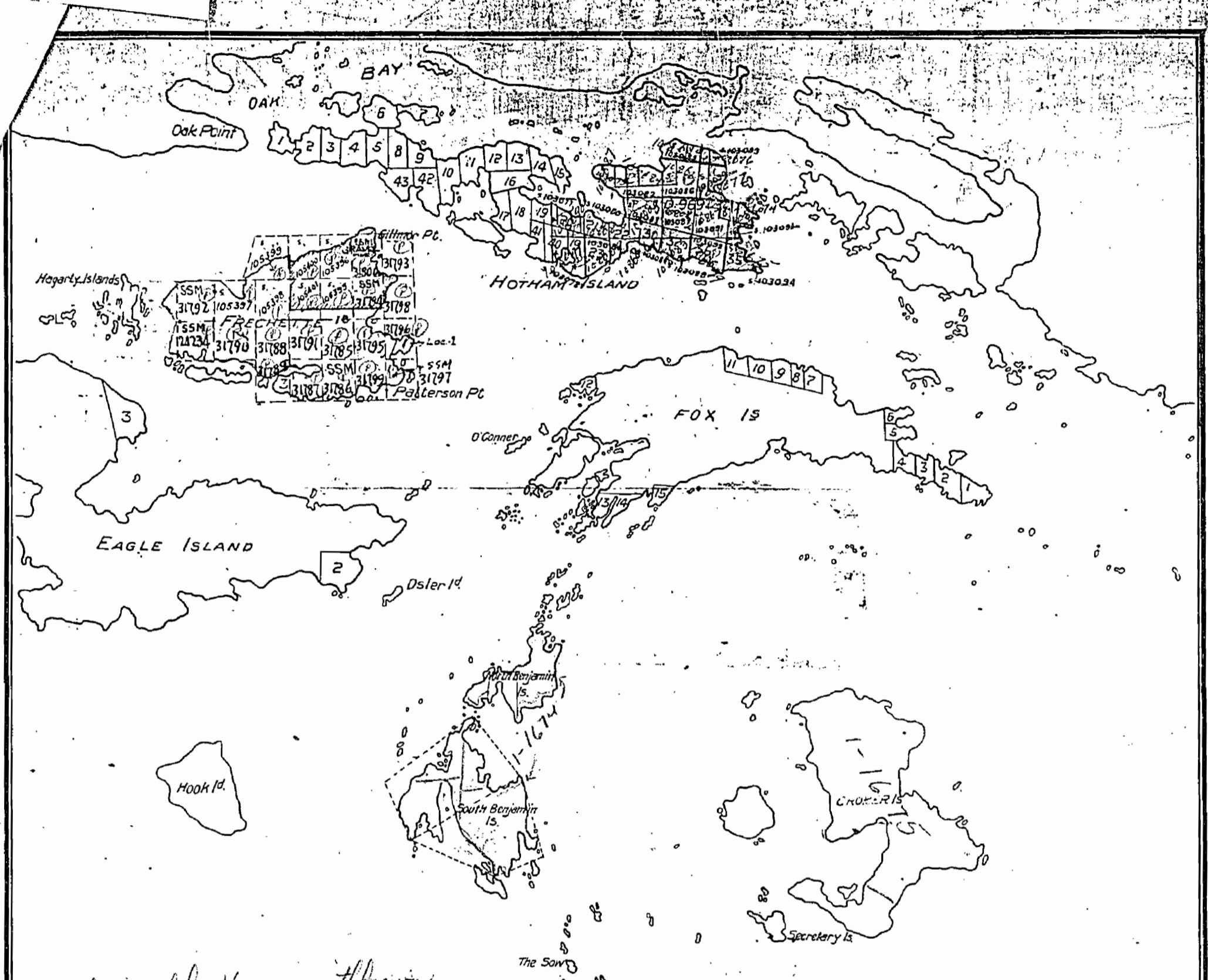
A. Hopkins



1257

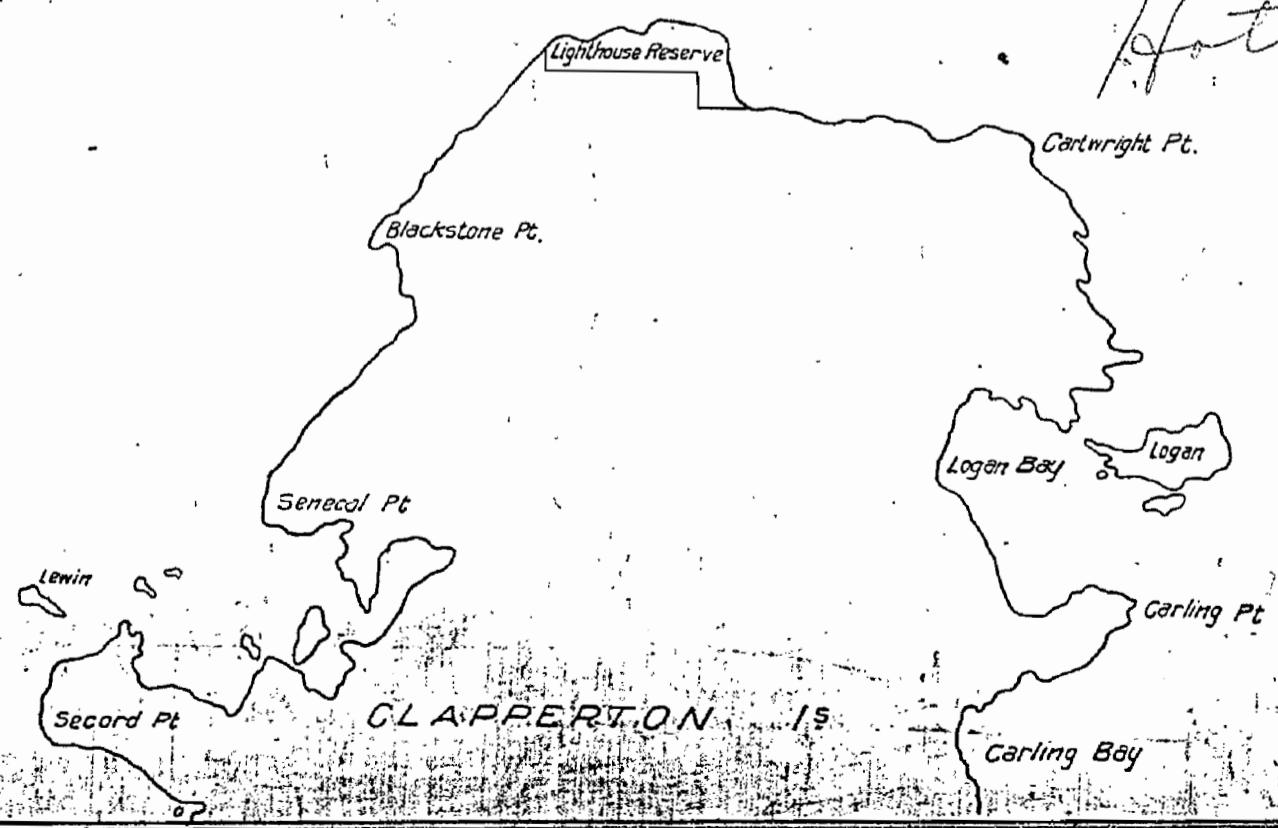
FRECHETTE ISLAND

FRECHETTE ISLAND M. 1257

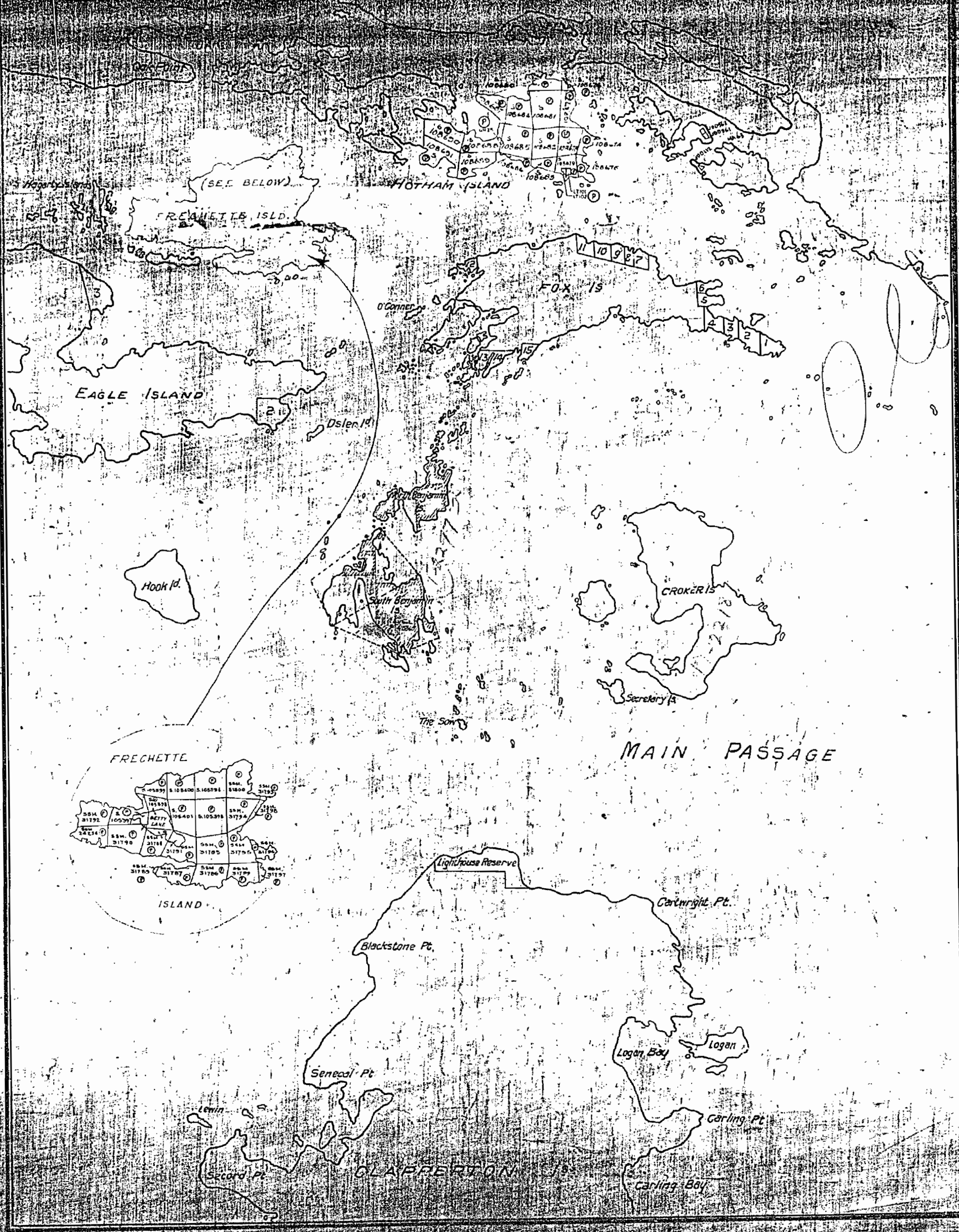


Islands in Lake Huron within
 from sketching Nov. 23/26
 Sect. 39 Sub. (c)

MAIN PASSAGE
 Frechette Is.
 Hotham Is.



SUBBURY
 RECEIVED
 FEB 1958
 MINING DIVISION



1257

OFFICE MAP

Frechette Isl.

Frechette Island 22° 30' S

Hotham Isl.

M. 1257

