

Aug 22/84

THE TOWNSHIP OF
OF
FRENCH

DISTRICT OF
NIPISSING

SUDBURY
MINING DIVISION

SCALE: 1-INCH=40 CHAINS

LEGEND

PATENTED LAND	(P)
CROWN LAND SALE	C.S.
LEASES	(L)
LOCATED LAND	Loc.
LICENSE OF OCCUPATION	L.O.
MINING RIGHTS ONLY	M.R.O.
SURFACE RIGHTS ONLY	S.R.O.
ROADS	—
IMPROVED ROADS	—
KING'S HIGHWAYS	—
RAILWAYS	—
POWER LINES	—
MARSH OR MUSKEG	—
MINES	—
CANCELLED	—

NOTES

400' Surface Rights Reservation around
all Lakes and Rivers.

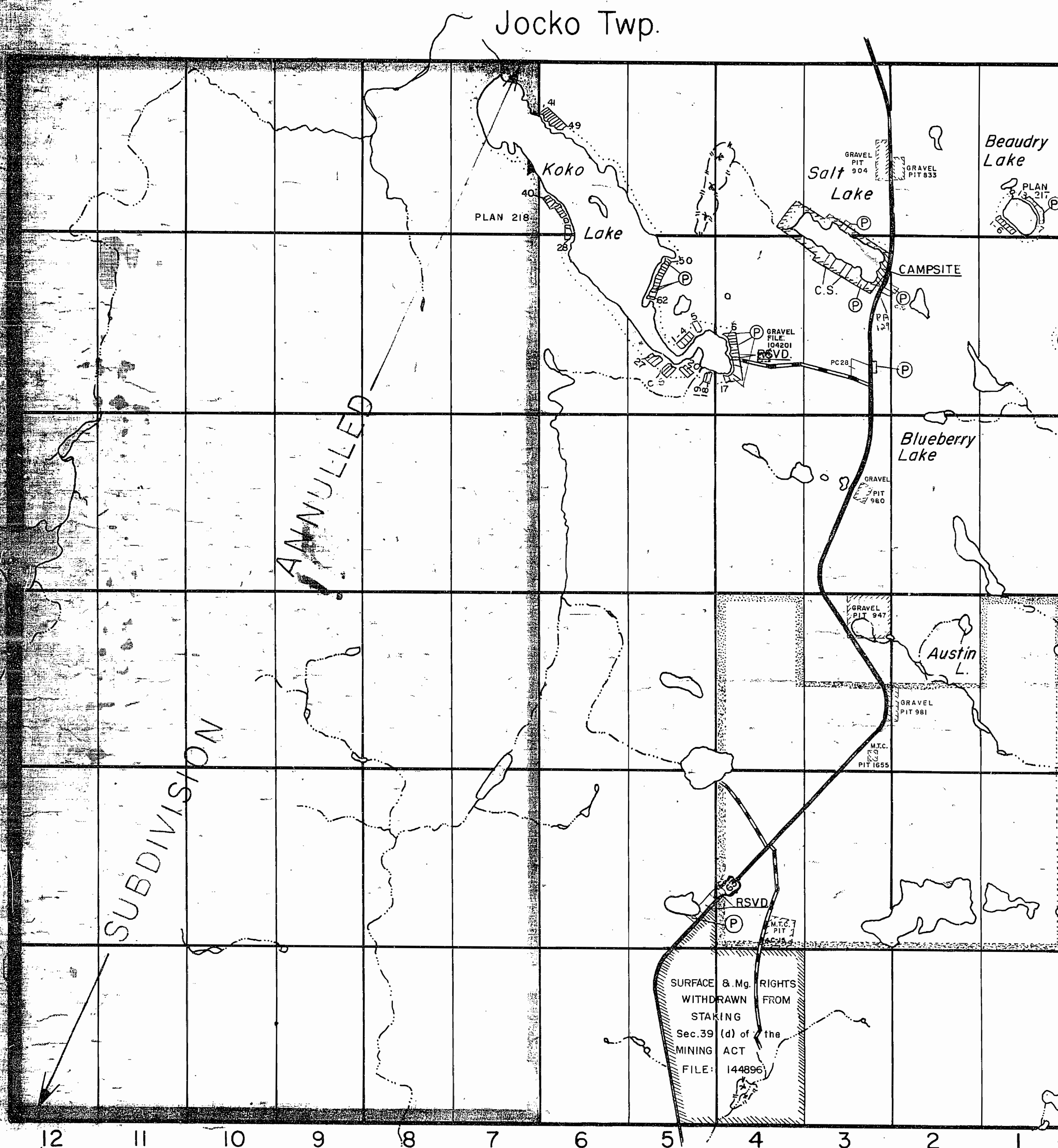
AREA MARKED THUS: SURFACE RIGHTS ONLY
RESERVED FROM STAKING UNDER SEC. 39(d) OF
THE MINING ACT. FILE: 144896 & 127297

Area Shown
Surface Rights Withdrawn From Staking.
Section 42 Mining Act
File 160707 - Vol. 2

FRENCH

PLAN NO.- M. 818

ONTARIO
MINISTRY OF NATURAL RESOURCES
SURVEYS AND MAPPING BRANCH



Jocko Twp.

VI

V

IV

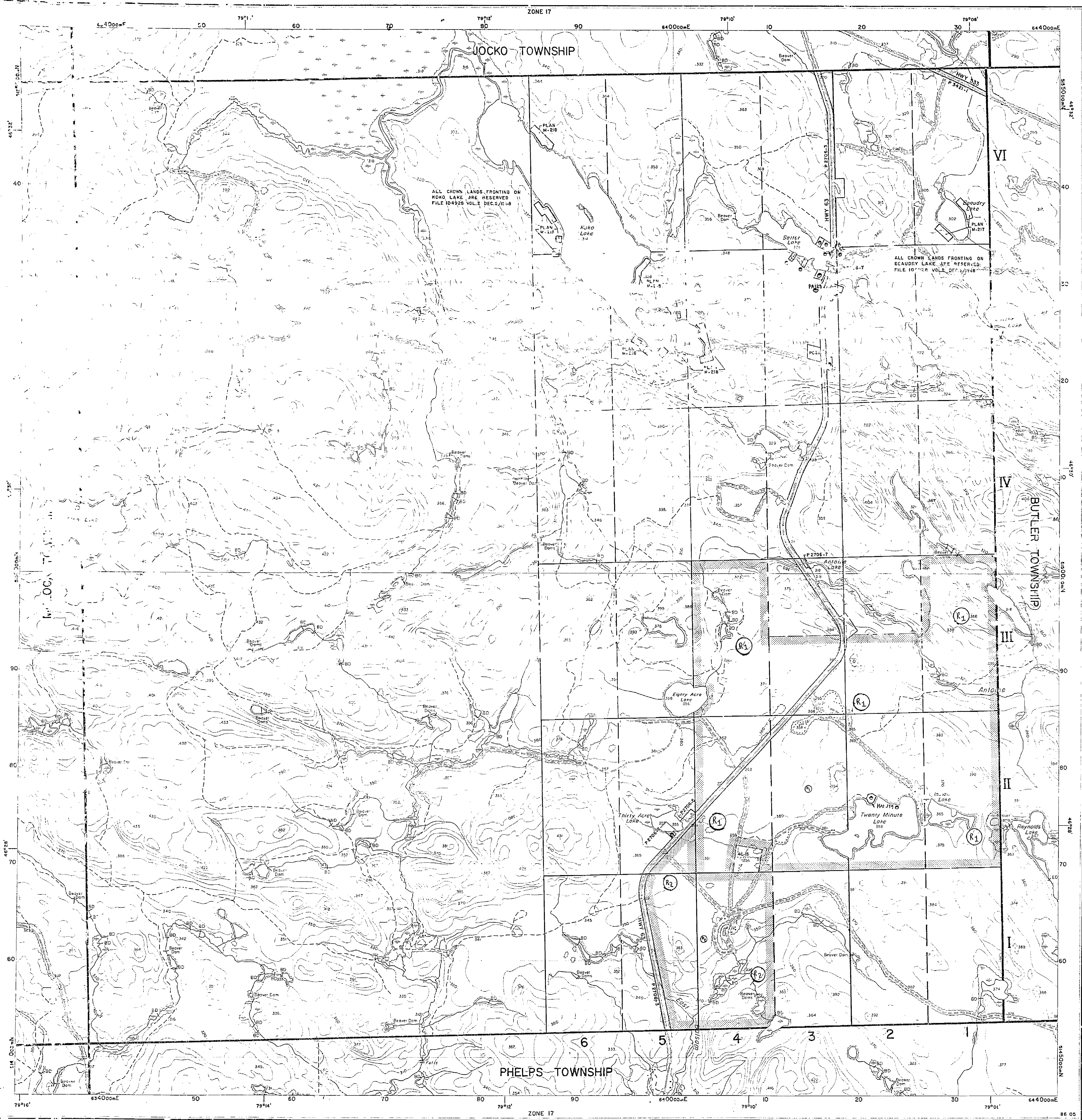
III

II

I

Butler Twp.

Phelps Twp.



Ministry of
Natural
Resources

Ministry of
Northern Development
and Mines

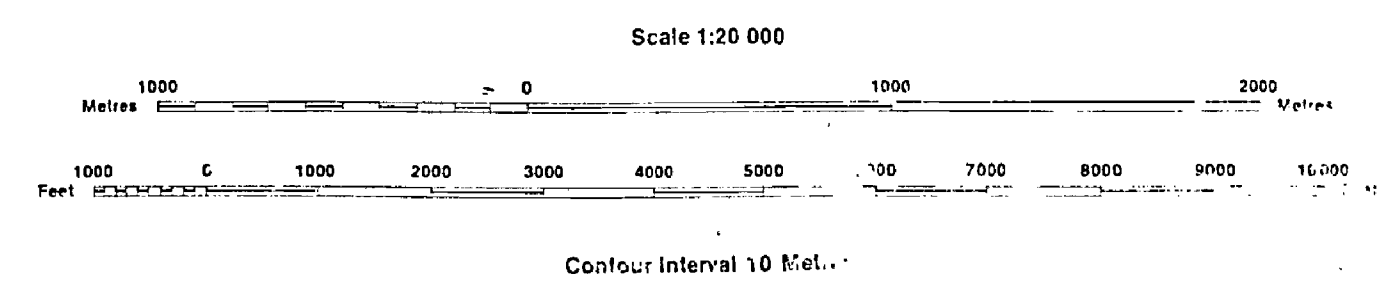
In Service: Feb. 3/88

INDEX TO LAND DISPOSITION

PLAN
G-1696
TOWNSHIP

M.N.R. ADMINISTRATIVE DISTRICT
NORTH BAY
MINING DIVISION
SUDBURY
LAND TITLES/REGISTRY DIVISION
NIPISSING

FRENCH

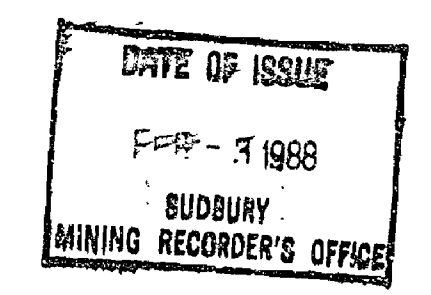


AREAS WITHDRAWN FROM DISPOSITION

MRO - Mining Rights Only
SRO - Surface Rights Only
M+S - Mining and Surface Rights

SYMBOLS	
Boundary	
Township, Meridian, Baseline	
Reserve allowance; surveyed	
shoreline	
Lot/Concession; surveyed	
unsurveyed	
Parcel; surveyed	
unsurveyed	
Right-of-way; road	
railway	
utility	
Reservation	
Cliff, Pit, Pile	
Contour	
Interpolated	
Approximate	
Depression	
Control point (horizontal)	
Flooded land	
Mine Load frame	
Pipeline (above ground)	
Railway; single track	
double track	
abandoned	
Road; highway, county, township	
access	
trail, bush	
Shoreline (original)	
Transmission line	
Wooded area	

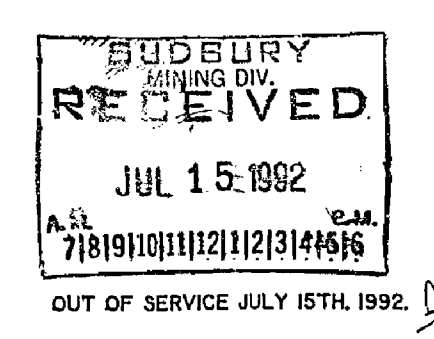
Boundary	Order No.	Date	Disposition	File
1	1	17/1/54	CR	164
2	2	1/1/54	SR & MR	177567



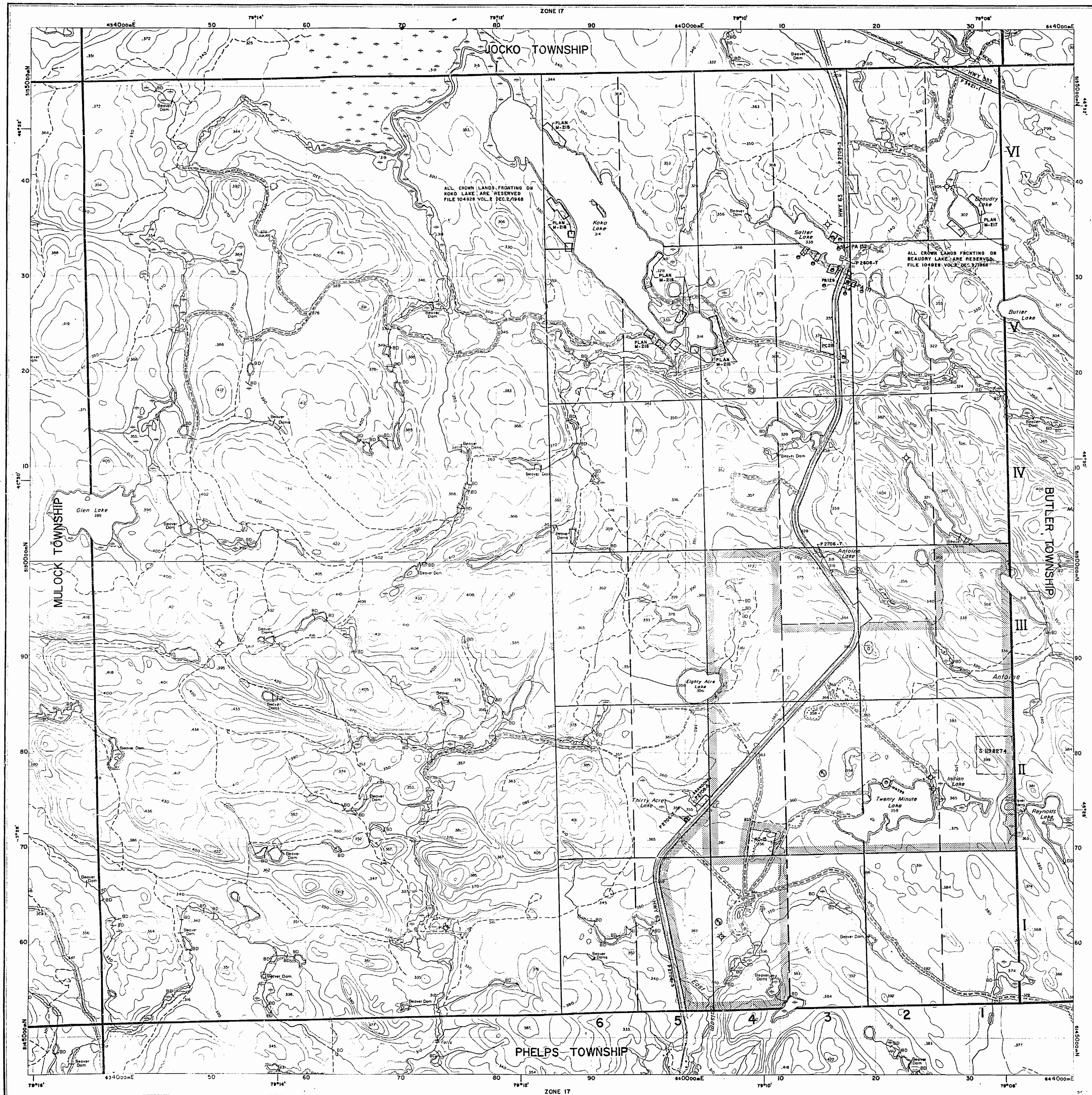
DISPOSITION OF CROWN LANDS

Patent	
Surface & Mining Rights	
Surface Rights Only	
Mining Rights Only	
Lease	
Surface & Mining Rights	
Surface Rights Only	
Mining Rights Only	
Licence of Occupation	
Order-in-Council	
Cancelled	
Reservation	
Sand & Gravel	

NOTE: TOWNSHIP PARTIALLY ANNULED JANUARY 2/1964



THE INFORMATION THAT APPEARS ON THIS MAP HAS BEEN COMPILED FROM VARIOUS SOURCES, AND ACCURACY IS NOT GUARANTEED. THOSE WISHING TO STAKE MINING CLAIMS SHOULD CONSULT WITH THE MINING RECORDER, MINISTRY OF NORTHERN DEVELOPMENT AND MINES, FOR ADDITIONAL INFORMATION ON THE STATUS OF THE LANDS SHOWN HEREON.



Ministry of
Natural
Resources

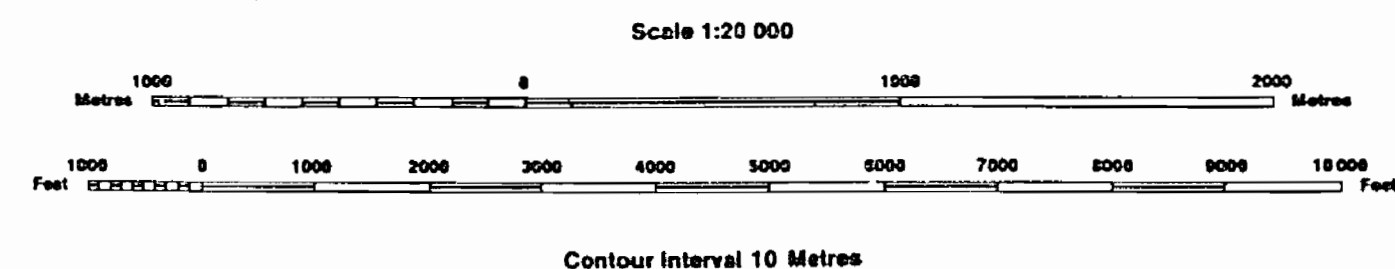
Ministry of
Northern Development
and Mines

INDEX TO LAND DISPOSITION

PLAN
G-1696
TOWNSHIP

FRENCH

M.N.R. ADMINISTRATIVE DISTRICT
NORTH BAY
MINING DIVISION
SUDBURY
LAND TITLES/REGISTRY DIVISION
NIPISSING



AREAS WITHDRAWN FROM DISPOSITION

MRO - Mining Rights Only
SRO - Surface Rights Only
M + S - Mining and Surface Rights

Description	Order No.	Date	Disposition	File
① CROWN RESERVE		17/11/54	SR	144096 127297
② FISH HATCHERY		17/11/54	SR & MR	127297

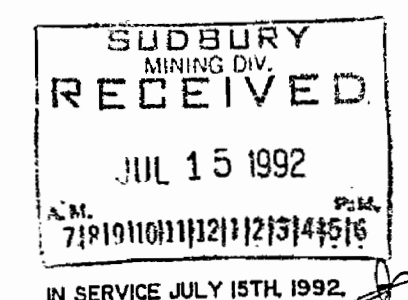
SYMBOLS

Boundary	
Township, Meridian, Baseline
Road allowance; surveyed
shoreshore
Lot/Concession; surveyed
unsurveyed
Parcel; surveyed
unsurveyed
Right-of-way; road
railway
utility
Reservation
Cliff, Pit, Pile
Contour
Interpolated
Approximate
Depression
Control point (horizontal)
Flooded land
Mine head frame
Pipeline (above ground)
Railway; single track
double track
abandoned
Road; highway, county, township
access
trail, bush
Shoreline (original)
Transmission line
Wooded area

DISPOSITION OF CROWN LANDS

Patent	
Surface & Mining Rights
Surface Rights Only
Mining Rights Only
Lease	
Surface & Mining Rights
Surface Rights Only
Mining Rights Only
Licence of Occupation
Order-in-Council
Cancelled
Reservation
Sanit & Gravel
LAND USE PERMIT

NOTE: TOWNSHIP PARTIALLY ANNULED JANUARY 2/1964



Jocko Twp. OFFICE USE ONLY

THE TOWNSHIP
OF

FRENCH

DISTRICT OF
NIPISSING

SUDBURY
MINING DIVISION

SCALE: 1-INCH=40 CHAINS

LEGEND

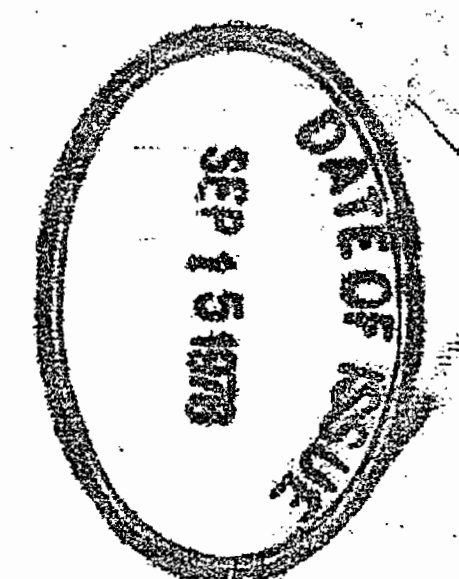
PATENTED LAND	Ⓟ
CROWN LAND SALE	C.S.
LEASES	Ⓛ
LOCATED LAND	Loc.
LICENSE OF OCCUPATION	L.O.
MINING RIGHTS ONLY	M.R.O.
SURFACE RIGHTS ONLY	S.R.O.
ROADS	—
IMPROVED ROADS	—
KING'S HIGHWAYS	—
RAILWAYS	—
POWER LINES	—
MARSH OR MUSKEG	—
MINES	—
CANCELLED	—

NOTES

400' Surface Rights Reservation around
all Lakes and Rivers.

AREA MARKED THUS: SURFACE RIGHTS ONLY
RESERVED FROM STAKING UNDER SEC. 39(d) of
THE MINING ACT. FILE: 144896 & 127297

Area Shown
Surface Rights Withdrawn From Staking.
Section 42 Mining Act
File 160707 - Vol. 2



FRENCH

PLAN NO.- M. 818

ONTARIO

MINISTRY OF NATURAL RESOURCES

SURVEYS AND MAPPING BRANCH

VI

V

IV

III

II

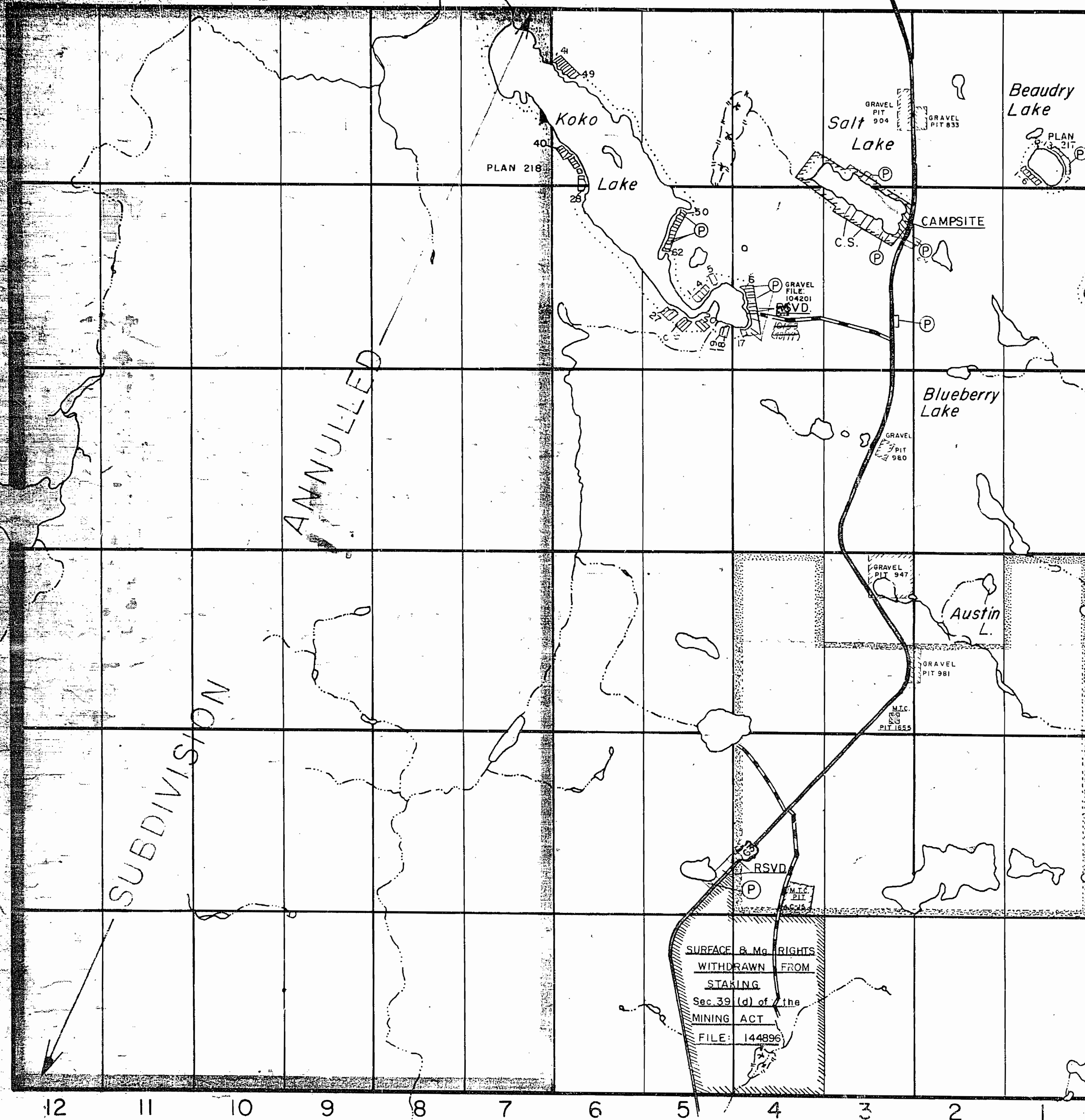
I

Butler Twp.

Mullock Twp.

ANNULLED

SUBDIVISION



Phelps Twp.

Jocko Twp. OFFICE USE ONLY

THE TOWNSHIP OF
FRENCH

DISTRICT OF
NIPISSING

SUDBURY
MINING DIVISION

SCALE: 1-INCH=40 CHAINS

LEGEND

PATENTED LAND
CROWN LAND SALE
LEASES
LOCATED LAND
LICENSE OF OCCUPATION
MINING RIGHTS ONLY
SURFACE RIGHTS ONLY
ROADS
IMPROVED ROADS
KING'S HIGHWAYS
RAILWAYS
POWER LINES
MARSH OR MUSKEG
MINES
CANCELLED

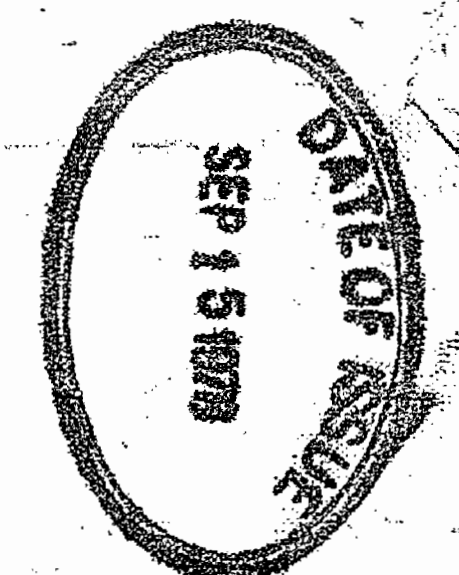
P
C.S.
L
Loc
L.O.
M.R.O.
S.R.O.
R
C

NOTES

400' Surface Rights Reservation around
all Lakes and Rivers.

AREA MARKED THUS: SURFACE RIGHTS ONLY
RESERVED FROM STAKING UNDER SEC. 39(d) OF
THE MINING ACT. FILE: 144896 & 127297

Area Shown
Surface Rights Withdrawn From Staking.
Section 42 Mining Act
File 160707 - Vol. 2



FRENCH

PLAN NO.- M. 818

ONTARIO
MINISTRY OF NATURAL RESOURCES
SURVEYS AND MAPPING BRANCH

VI

V

IV

III

II

I

Butler Twp.

Phelps Twp.

PLAN 218

Koko Lake

Salt Lake

Beaudry Lake

CAMP SITE

Blueberry Lake

Austin L.

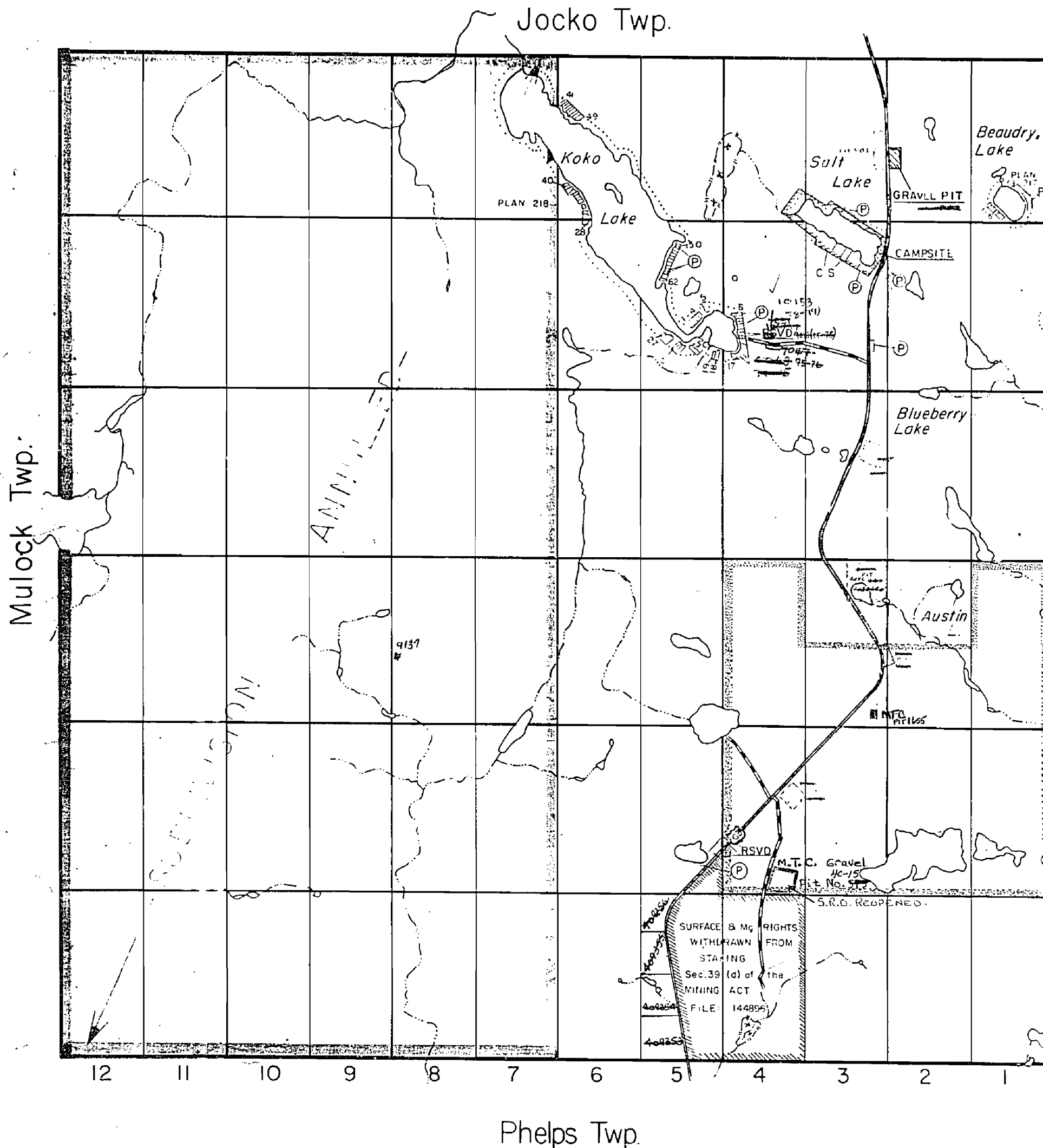
SURFACE & M. RIGHTS
WITHDRAWN FROM
STAKING
Sec. 39 (d) of the
MINING ACT
FILE: 144896

Mullock Twp.

ANNULLED

SUBDIVISION

12 11 10 9 8 7 6 5 4 3 2 1



SUDBURY
MINING DIV.
RECEIVED
JUN 22 1970
A.M. 7 8 9 10 11 12 1 2 3 4 5 6 P.M.

VI

V

IV

III

II

I

Butler Twp.

THE TOWNSHIP
OF
FRENCH

DISTRICT OF
NIPISSING

SUDBURY
MINING DIVISION

SCALE: 1 INCH = 40 CHAINS

LEGEND

PATENTED LAND	Ⓟ
CROWN LAND SALE	C.S.
LEASES	Ⓛ
LOCATED LAND	Loc.
LICENSE OF OCCUPATION	L.O.
MINING RIGHTS ONLY	M.R.O.
SURFACE RIGHTS ONLY	S.R.O.
ROADS	—
IMPROVED ROADS	—
KING'S HIGHWAYS	— 63 —
RAILWAYS	—
POWER LINES	—
MARSH OR MUSKEG	—
MINES	—
CANCELLED	—

NOTES

400' Surface Rights Reservation around
all Lakes and Rivers.

AREA MARKED THUS SURFACE RIGHTS ONLY
RESERVED FROM STAKING UNDER SEC. 39(d) OF
THE MINING ACT FILE: 144896 & 127297.

Area Shown
Surface Rights Withdrawn From Staking,
Section 42 Mining Act
File 144896 - Vol 2

FRENCH

PLAN NO.-M. 818

DEPARTMENT OF MINES

— ONTARIO —