

1728

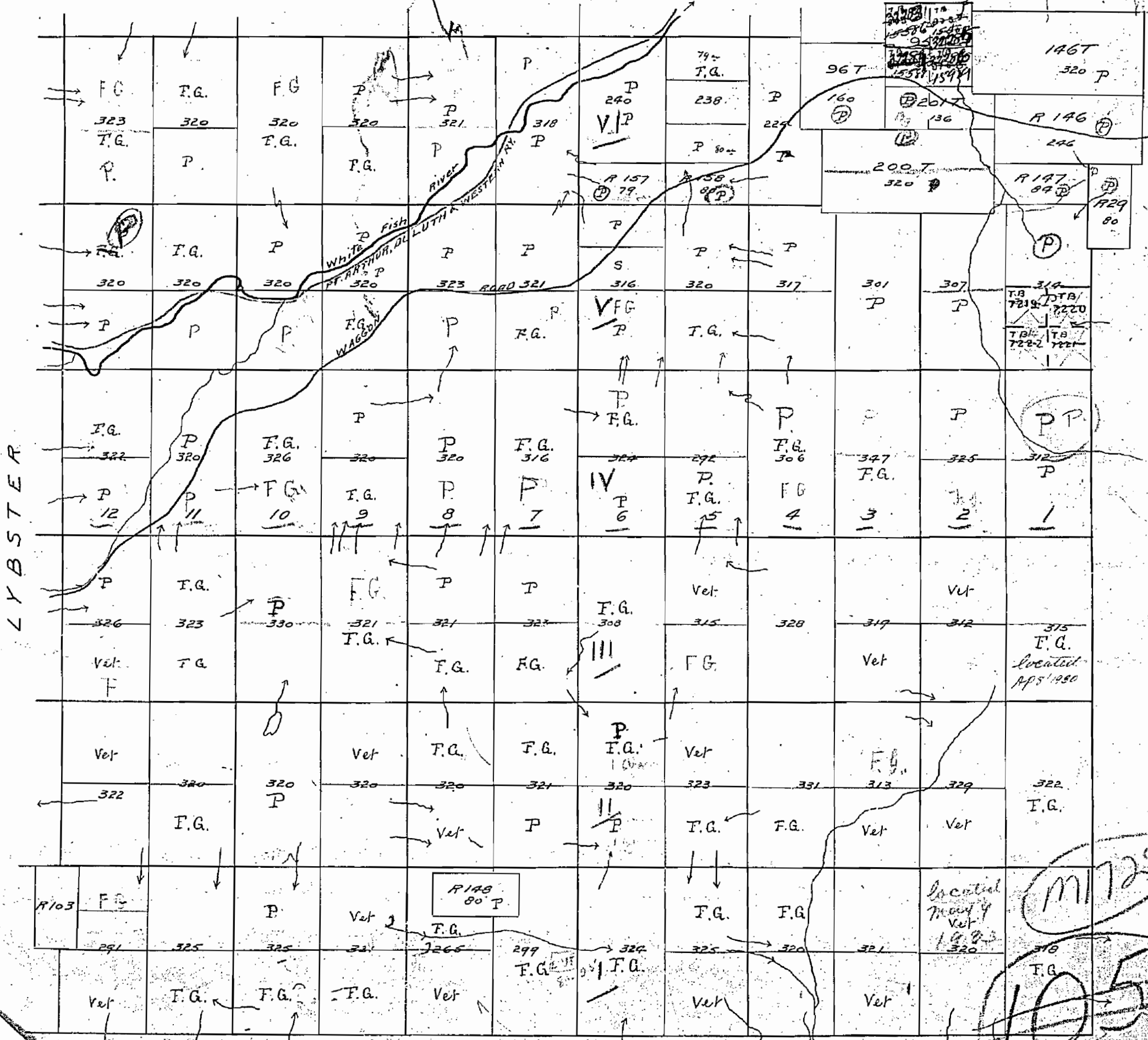
GILLIES

SURVEYED BY T.O. BOLGER P.L.S.

1885

SCALE, 40 CHS. = 1 INCH.

O'CONNOR



LYBSTER

M 1728

105

located
May 4
Vet
1893

located
Apr 1890

R103

R148
80 P

318
F.G.

320
Vet

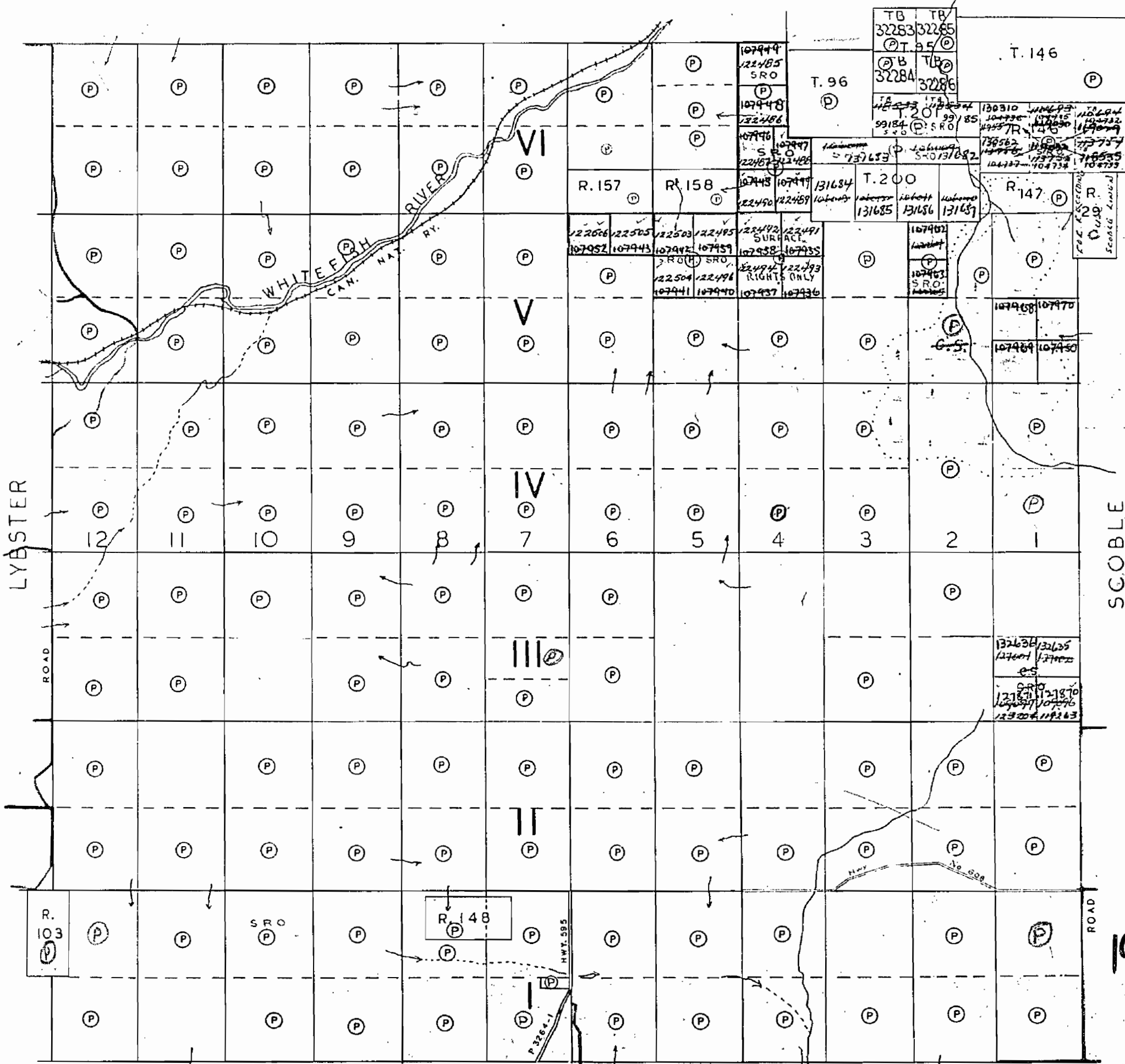
1728

GILLIES

PORT ARTHUR MINING DIVISION
DISTRICT OF THUNDER BAY

Scale 40 Chains 1 Inch

O'CONNOR



LYBSTER

ROAD

SCOBLE

ROAD

1963

PEARSON

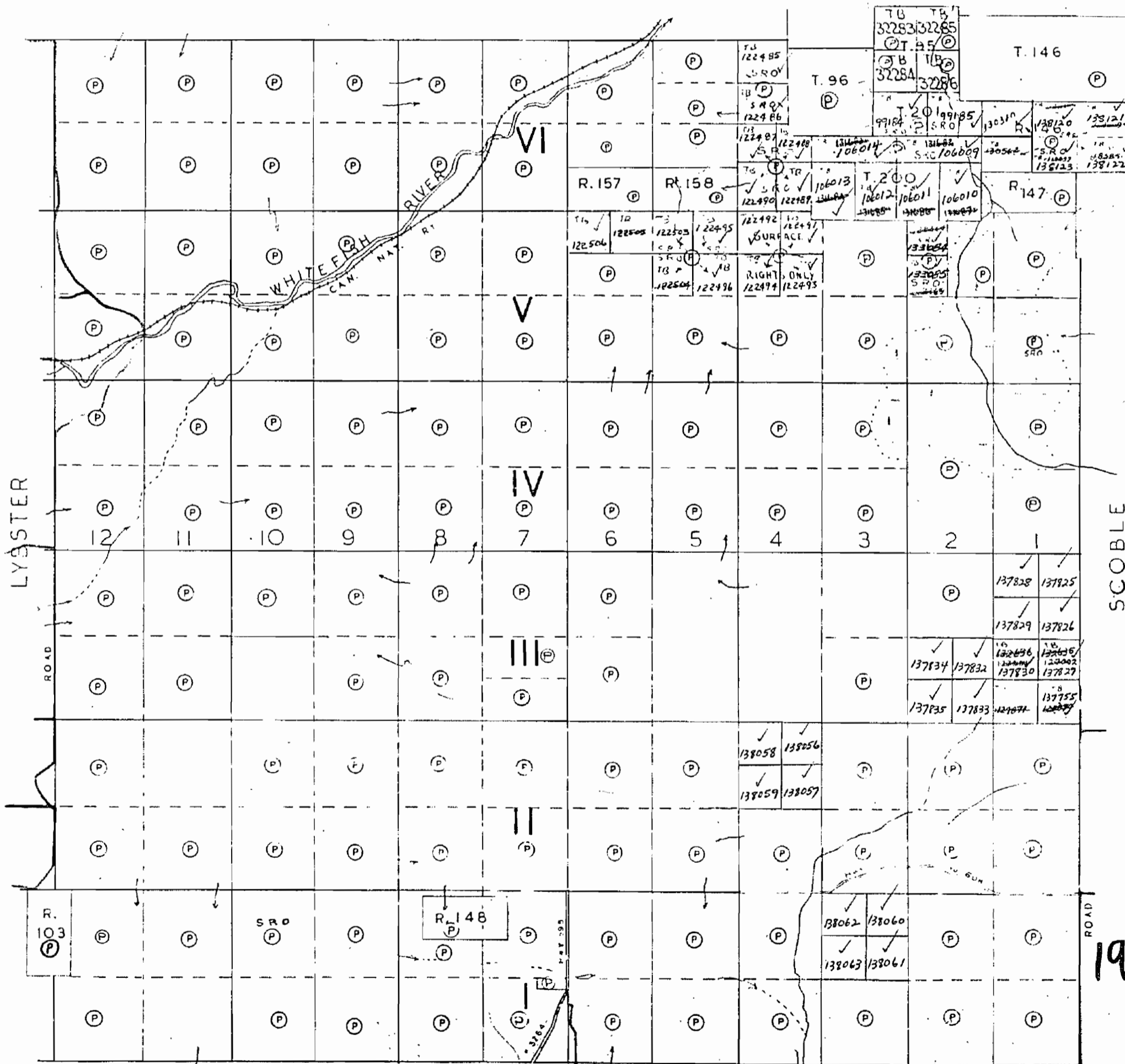
M1728

1728

GILLIES LTD

PORT ARTHUR MINING DIVISION
DISTRICT OF THUNDER BAY
Scale 40 Chains 1 Inch

O'CONNOR



PEARSON

1967

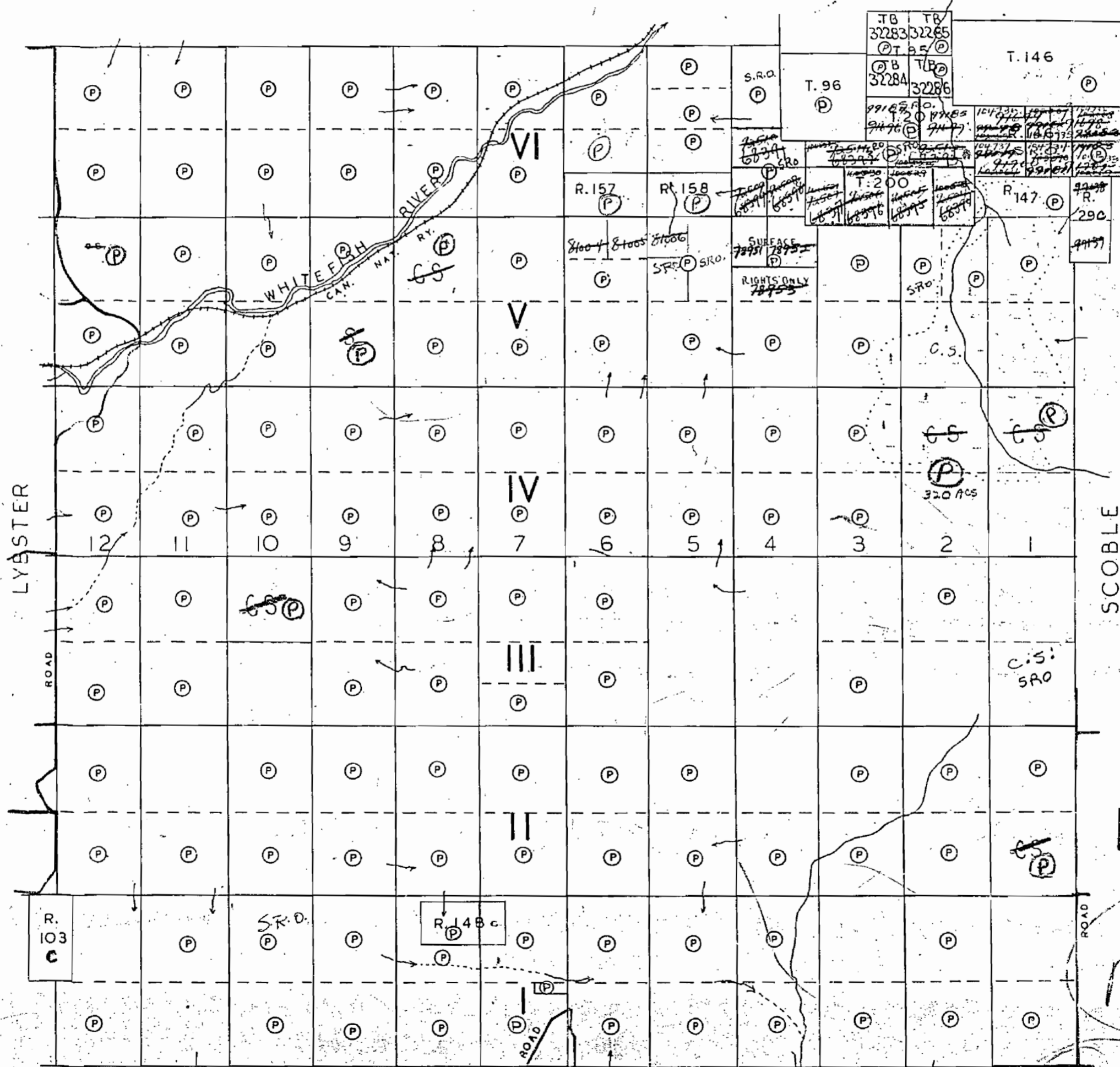
M1728

1728

GILLIES

PORT ARTHUR MINING DIVISION
DISTRICT OF THUNDER BAY
Scale 40 Chains 1 Inch

O'CONNOR



PEARSON

1955

M1728

105

G.S.

1728

M.1728
ONTARIO

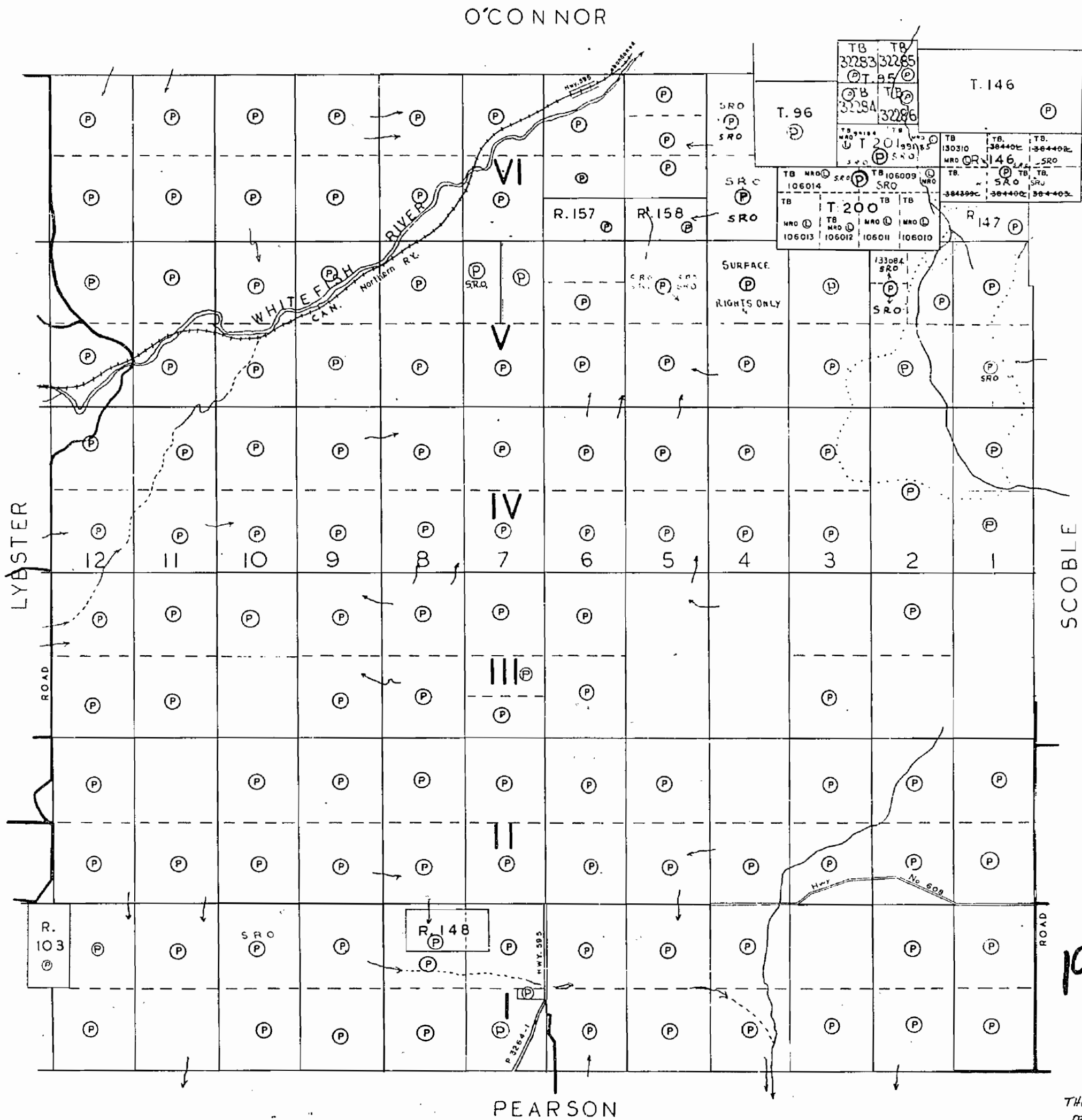
MINISTRY OF NATURAL RESOURCES
SURVEYS AND MAPPING BRANCH

GILLIES

THUNDER BAY MINING DIVISION
DISTRICT OF THUNDER BAY
Scale 40 Chains 1 Inch

NOTES

400' surface rights reservation along the shores
of all lakes and rivers.



1977

THUNDER BAY
DEC 17, 1976

M1728

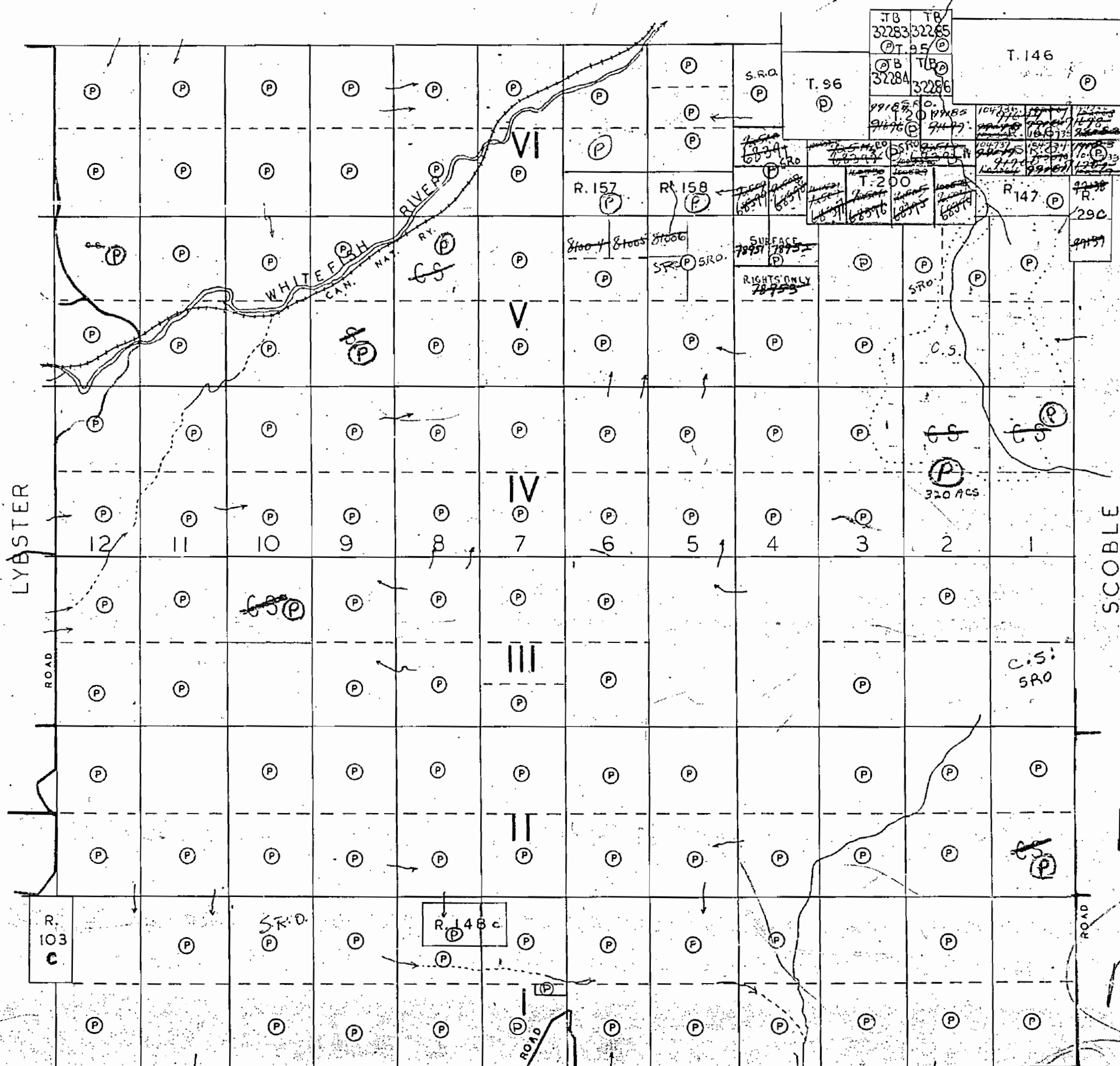
1728

GILLIES

PORT ARTHUR MINING DIVISION
DISTRICT OF THUNDER BAY

Scale 40 Chains 1 Inch

O'CONNOR



1955

M1728

105

G.S.

REFERENCES

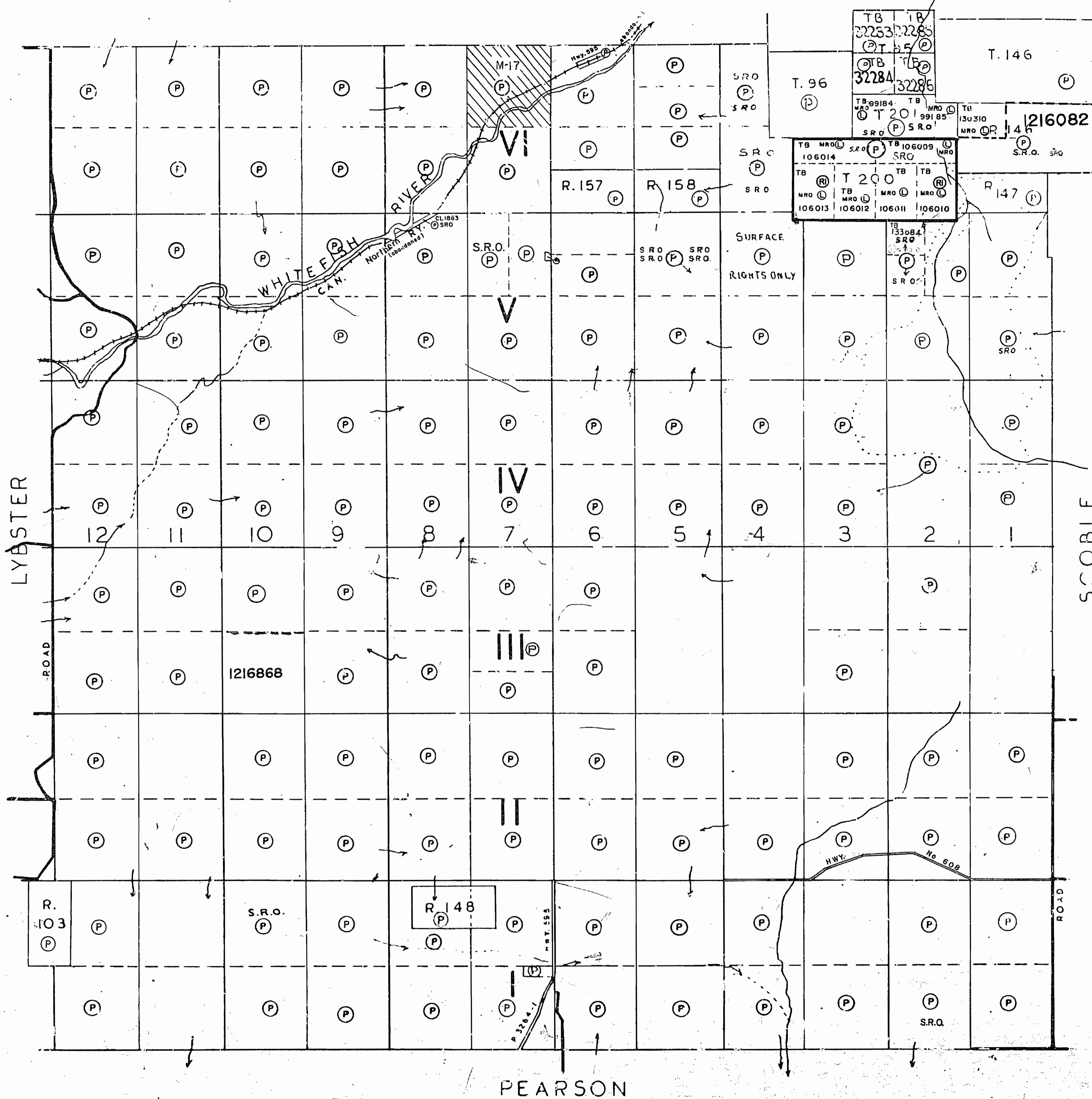
AREAS WITHDRAWN FROM DISPOSITION

- M.R.O. - MINING RIGHTS ONLY
- S.R.O. - SURFACE RIGHTS ONLY
- M.+S. - MINING AND SURFACE RIGHTS

Description Order No. Date Disposition File

Ⓜ MINING RIGHTS WITHDRAWN FROM STAKING ORDER NO. W-TB-75/94-NWR DATED 19/05/84 TO PREVENT ADVERSE ALIENATION WHILE MINISTER CONSIDERS ANNULMENT OF CERTIFICATE OF TERMINATION.

O'CONNOR 678



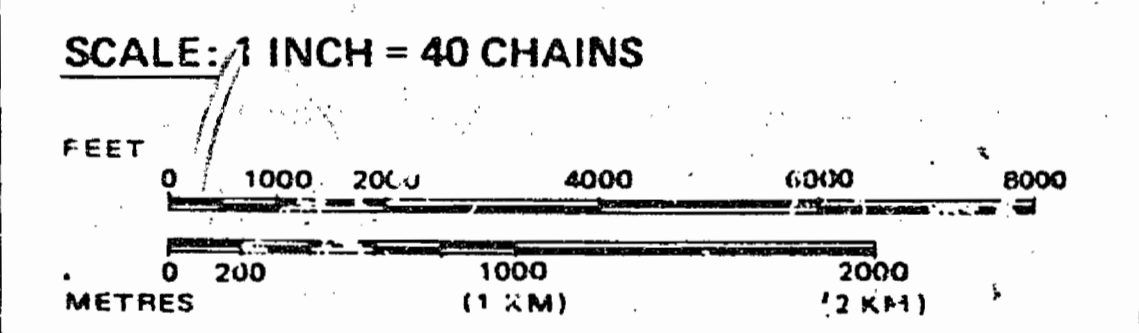
LEGEND

- HIGHWAY AND ROUTE No.
- OTHER ROADS
- TRAILS
- SURVEYED LINES:
 - TOWNSHIPS, BASE LINES, ETC
 - LOTS, MINING CLAIMS, PARCELS, ETC.
- UNSURVEYED LINES:
 - LOT LINES
 - PARCEL BOUNDARY
 - MINING CLAIMS ETC.
- RAILWAY AND RIGHT OF WAY
- UTILITY LINES
- NON-PERENNIAL STREAM
- FLOODING OR FLOODING RIGHTS
- SUBDIVISION OR COMPOSITE PLAN
- RESERVATIONS
- ORIGINAL SHORELINE
- MARSH OR MUSKEG
- MINES
- TRAVERSE MONUMENT

DISPOSITION OF CROWN LANDS

TYPE OF DOCUMENT	SYMBOL
PATENT, SURFACE & MINING RIGHTS	ⓂⓃ
" SURFACE RIGHTS ONLY	Ⓝ
" MINING RIGHTS ONLY	Ⓜ
LEASE, SURFACE & MINING RIGHTS	ⓂⓃ
" SURFACE RIGHTS ONLY	Ⓝ
" MINING RIGHTS ONLY	Ⓜ
LICENCE OF OCCUPATION	Ⓝ
ORDER-IN-COUNCIL	Ⓝ
RESERVATION	Ⓝ
CANCELLED	Ⓝ
SAND & GRAVEL	Ⓝ
LAND USE PERMITS FOR COMMERCIAL TOURISM/OUTPOST CAMPS	Ⓝ

NOTE: MINING RIGHTS IN PARCELS PATENTED BY OR C.M.Y. 6 1913, VESTED IN ORIGINAL PATENTEE BY THE PUBLIC LANDS ACT, R.S.O. 1970, CHAP. 389, S.20, FS. 31 & 32.



GILLIES TWP.

M.N.R. ADMINISTRATIVE DISTRICT
THUNDER BAY
 MINING DIVISION
THUNDER BAY
 LAND TITLES / REGISTRY DIVISION
THUNDER BAY

Ministry of Natural Resources
 Ministry of Northern Development and Mines
 Ontario
 August 21, 1986

Date: JULY, 1986
 Number: **G-657**

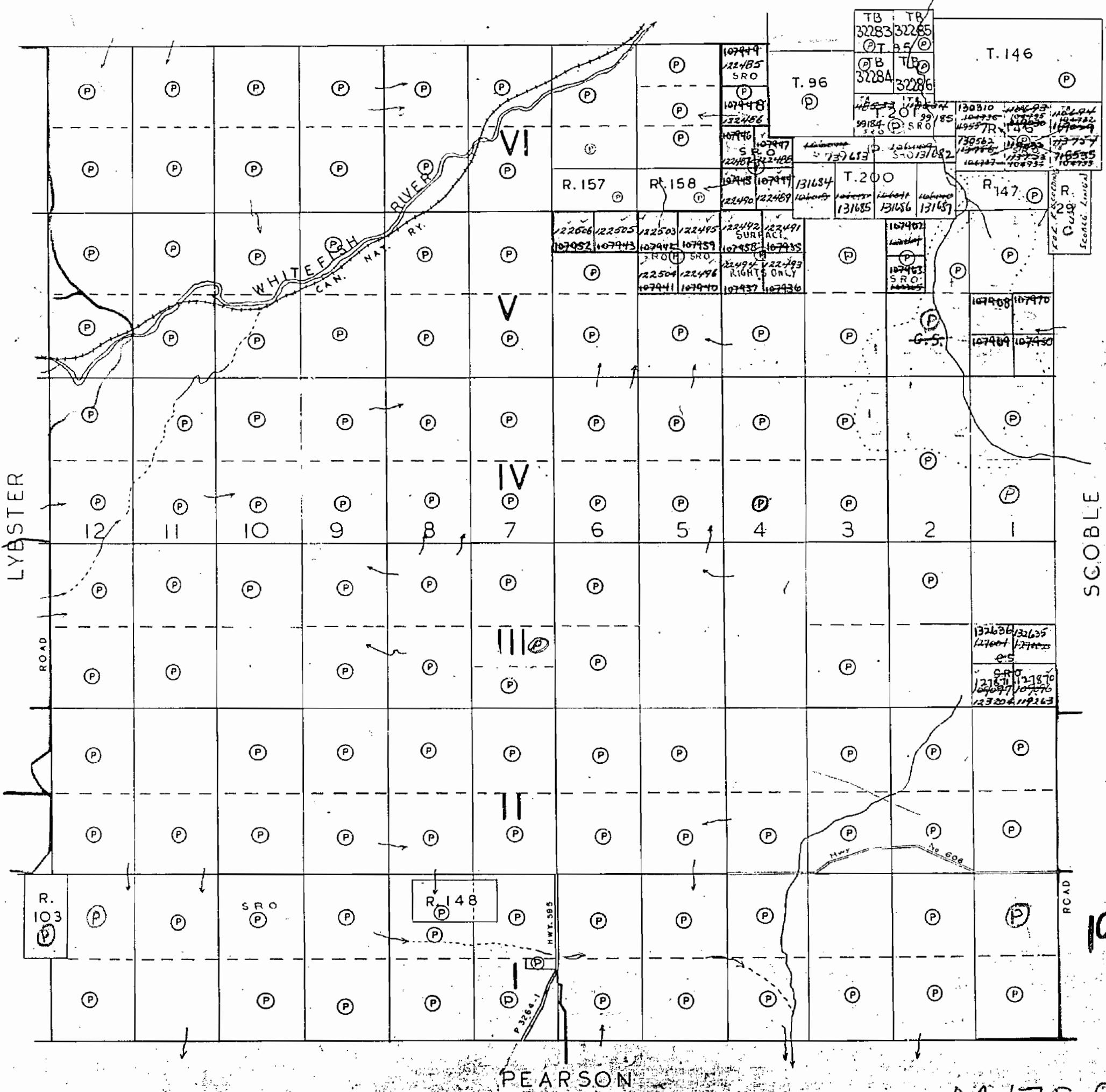
THE INFORMATION THAT APPEARS ON THIS MAP HAS BEEN COMPILED FROM VARIOUS SOURCES, AND ACCURACY IS NOT GUARANTEED. THOSE WISHING TO STAKE MINING CLAIMS SHOULD CONSULT WITH THE MINING RECORDER, MINISTRY OF NORTHERN DEVELOPMENT AND MINES, FOR ADDITIONAL INFORMATION ON THE STATUS OF THE LANDS SHOWN HEREON.

1728

GILLIES

PORT ARTHUR MINING DIVISION
DISTRICT OF THUNDERBAY
Scale 40 Chains 1 Inch

O'CONNOR



1963

PEARSON

M1728

REFERENCES

AREAS WITHDRAWN FROM DISPOSITION

M.R.O. - MINING RIGHTS ONLY

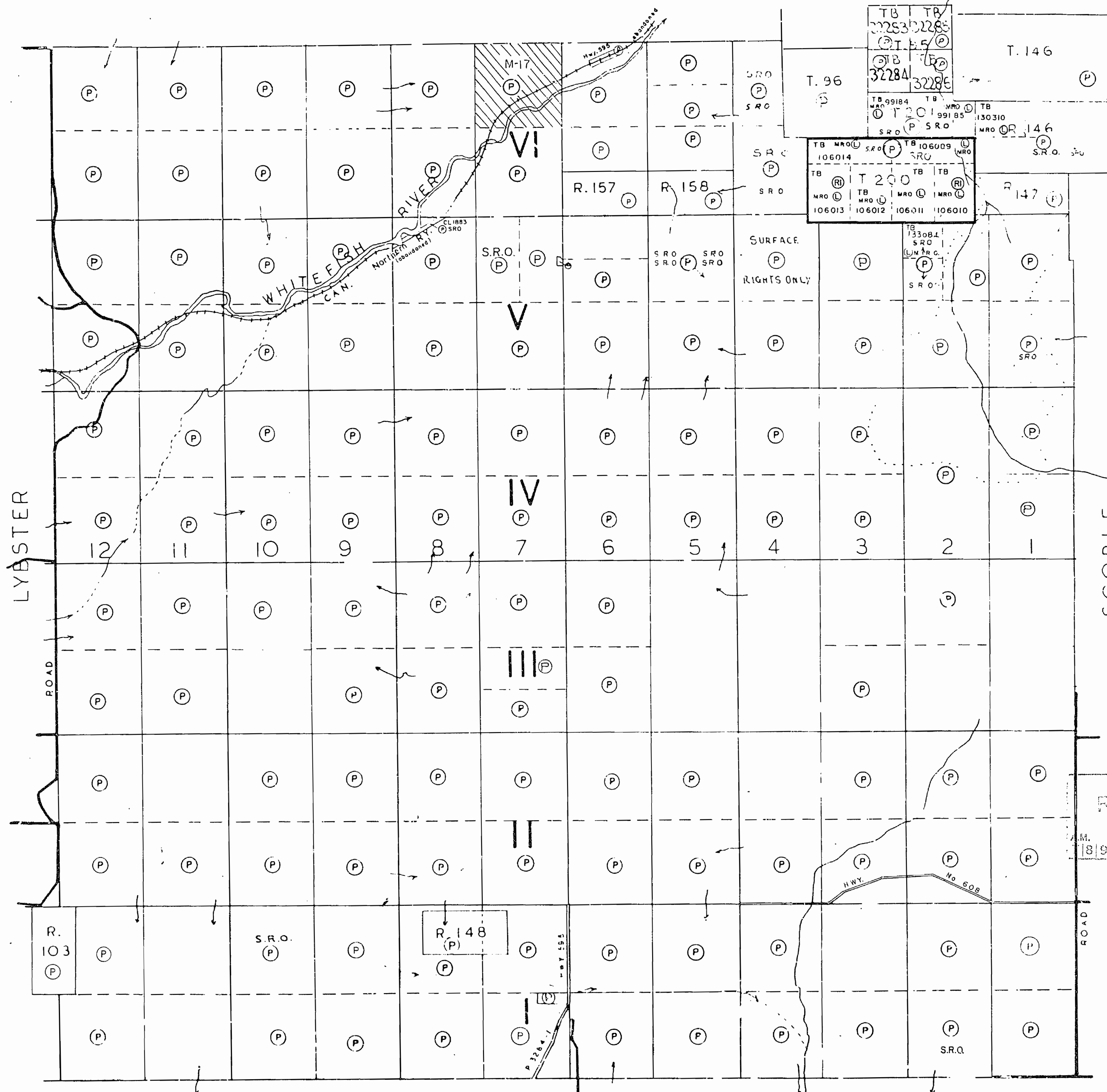
S.R.O. - SURFACE RIGHTS ONLY

M.+S. - MINING AND SURFACE RIGHTS

Description Order No. Date Disposition File

MINING RIGHTS WITHDRAWN FROM STAKING ORDER NO. W-TB-75/94/NWR DATED 19/05/94, TO PREVENT ADVERSE ALIENATION WHILE MINISTER CONSIDERS ANNULMENT OF CERTIFICATE OF TERMINATION.

O'CONNOR 678



THE INFORMATION THAT APPEARS ON THIS MAP HAS BEEN COMPILED FROM VARIOUS SOURCES, AND ACCURACY IS NOT GUARANTEED. THOSE WISHING TO STAKE MINING CLAIMS SHOULD CONSULT WITH THE MINING RECORDER, MINISTRY OF NORTHERN DEVELOPMENT AND MINES, FOR ADDITIONAL INFORMATION ON THE STATUS OF THE LANDS SHOWN HEREON.

LEGEND

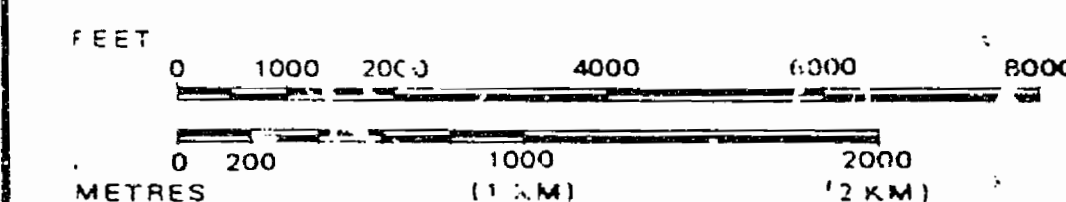
- HWY AND ROUTE No.
- OTHER ROADS
- TRA L S
- SURVEYED LINES:
 - TOWNSHIPS, BASE LINES, ETC
 - LOTS, MINING CLAIMS, PARCELS, ETC.
- UNSURVEYED LINES:
 - LOT LINES
 - PARCEL BOUNDARY
 - MINING CLAIMS ETC.
- RAILWAY AND RIGHT OF WAY
- UTILITY LINES
- NON-PERMANENT STREAM
- FLOODING OR FLOODING RIGHTS
- SUBDIVISION OR COMPOSITE PLAN
- RESERVATIONS
- ORIGINAL SHORELINE
- MARSH OR MUSKEG
- MINES
- TRAVERSE MONUMENT

DISPOSITION OF CROWN LANDS

TYPE OF DOCUMENT	SYMBOL
PATENT, SURFACE & MINING RIGHTS	
" SURFACE RIGHTS ONLY	
" MINING RIGHTS ONLY	
LEASE, SURFACE & MINING RIGHTS	
" SURFACE RIGHTS ONLY	
" MINING RIGHTS ONLY	
LICENCE OF OCCUPATION	
ORDER-IN-COUNCIL	
RESERVATION	
CANCELLED	
SAND & GRAVEL	
LAND USE PERMITS FOR COMMERCIAL TOURISM/OUTPOST CAMPS	

NOTE: MINING RIGHTS IN PARCELS PATENTED PRIOR TO MAY 6 1913, VESTED IN ORIGINAL PATENTEE BY THE PUBLIC LANDS ACT, R.S.O. 1970, CHAP. 382, SEC. 63, SUBSEC. 1.

SCALE: 1 INCH = 40 CHAINS



GILLIES TWP.

M.N.R. ADMINISTRATIVE DISTRICT
THUNDER BAY
 MINING DIVISION
THUNDER BAY
 LAND TITLES / REGISTRY DIVISION
THUNDER BAY

Ministry of Natural Resources
 Ministry of Northern Development and Mines
 Or.ario August 21, 1986

Date JULY, 1986

Number **G-657**

MAY 31, 1995
 G-657

1728

M.1728
ONTARIO

MINISTRY OF NATURAL RESOURCES
SURVEYS AND MAPPING BRANCH

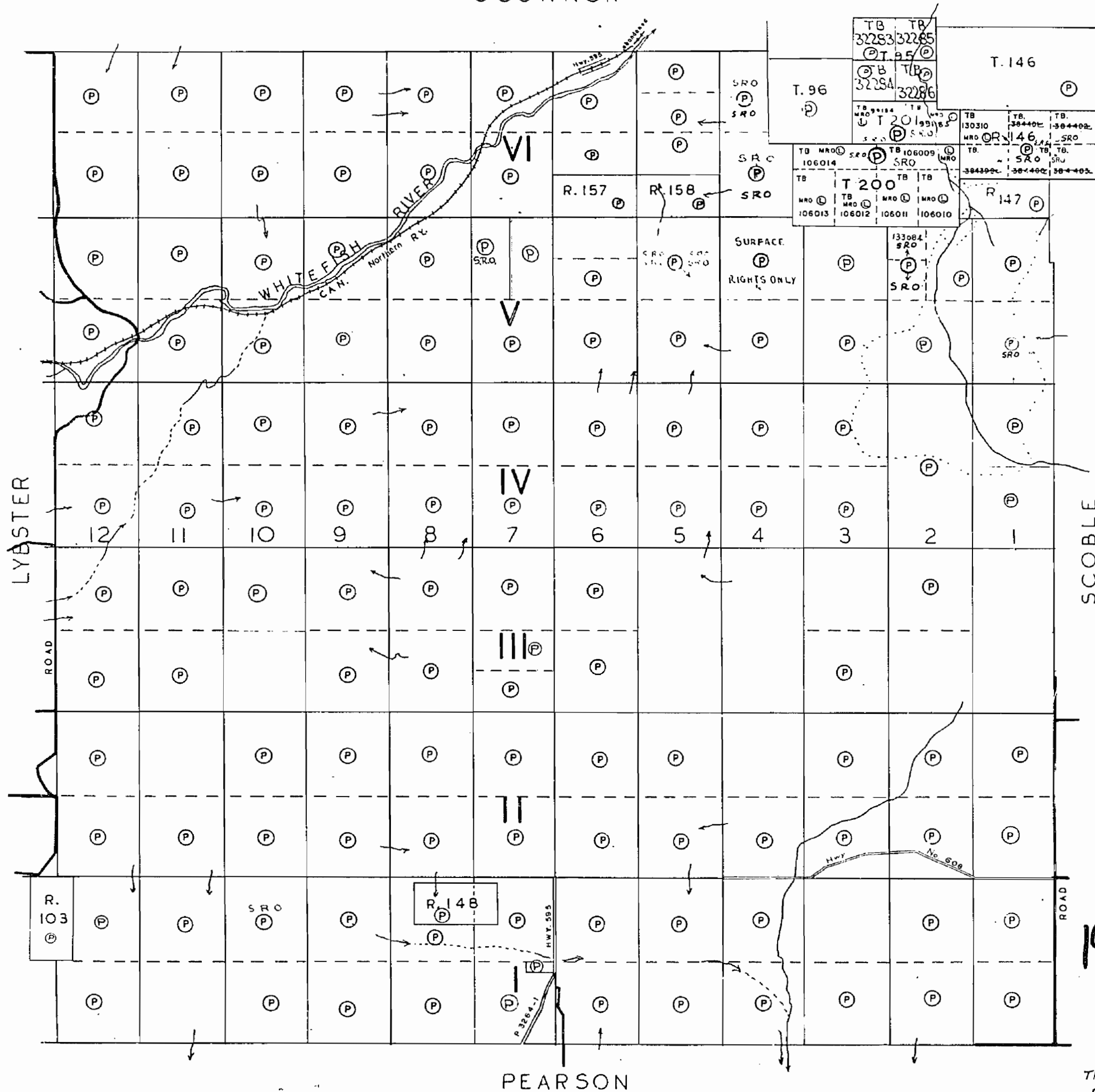
GILLIES

THUNDER BAY MINING DIVISION
DISTRICT OF THUNDER BAY
Scale 40 Chains 1 Inch

NOTES

400' surface rights reservation along the shores
of all lakes and rivers.

O'CONNOR



1977

PEARSON

M1728

THUNDER BAY
DEC 17, 1976

1728

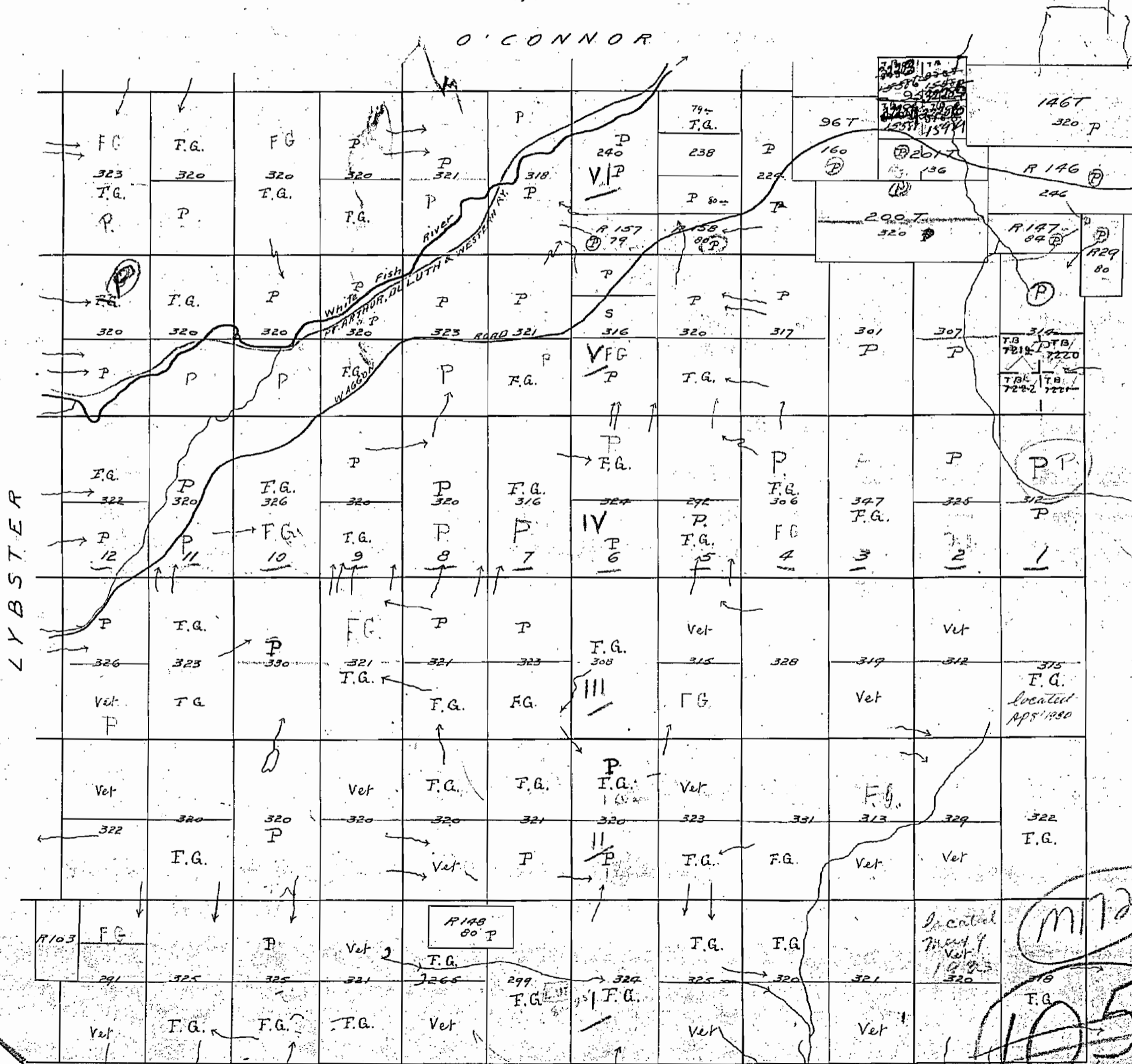
GILLIES

SURVEYED BY T.O. BOLGER P.L.S.

1885

SCALE, 40 CHS. = 1 INCH.

O'CONNOR



LYBSTER

M 1728

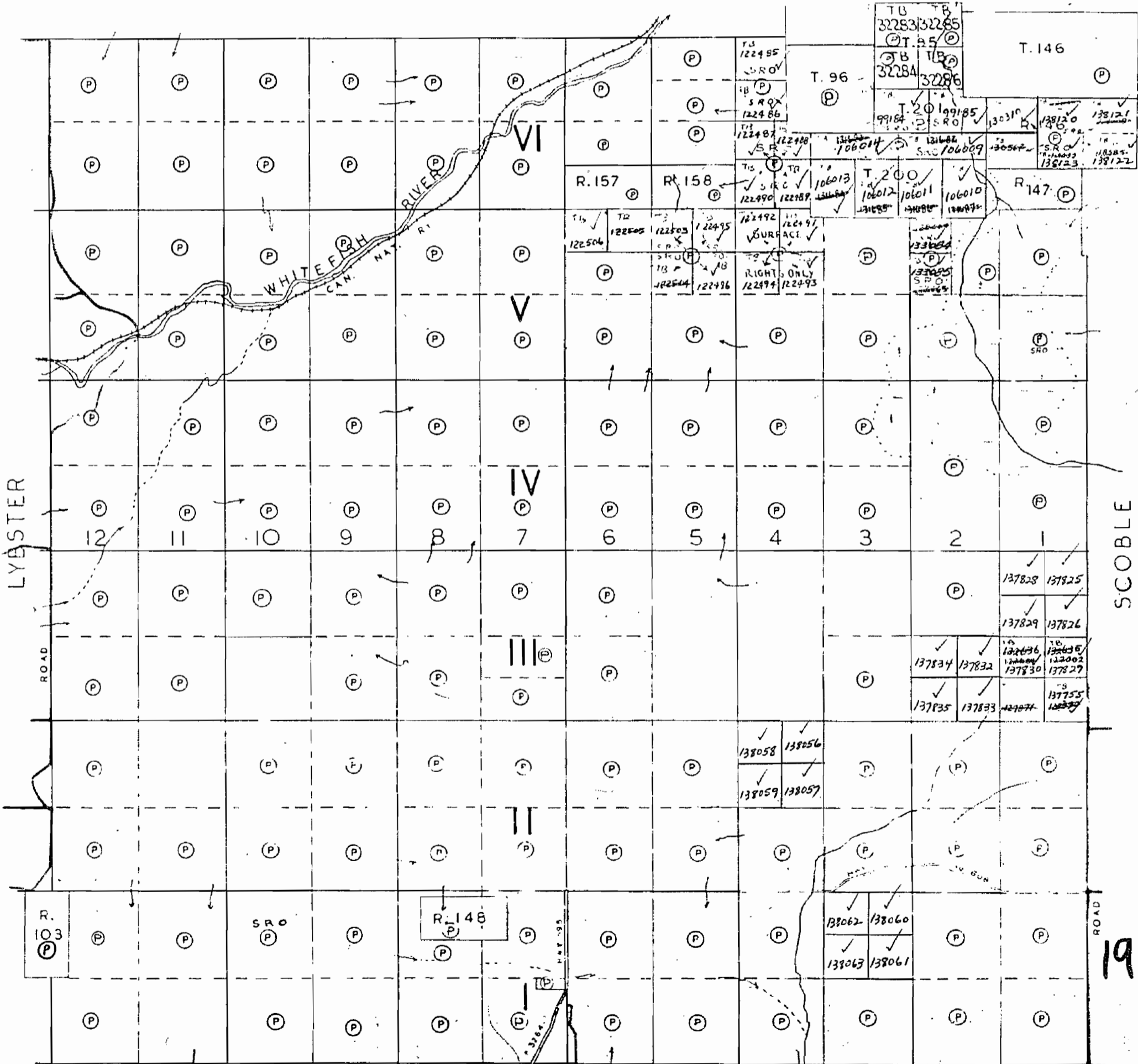
105

1728

GILLIES

PORT ARTHUR MINING DIVISION
DISTRICT OF THUNDER BAY
Scale 40 Chains 1 Inch

O'CONNOR



1967

M1728