

THE TOWNSHIP
OF
GLACKMEYER
DISTRICT OF
COCHRANE
TIMISKAMING
MINING DIVISION
SCALE: 1-INCH=40 CHAINS

LEGEND

PATENTED LAND	⊙
CROWN LAND SALE	C.S.
LEASES	⊖
LOCATED LAND	Loc.
LICENSE OF OCCUPATION	L.O.
MINING RIGHTS ONLY	M.R.O.
SURFACE RIGHTS ONLY	S.R.O.
ROADS	—
IMPROVED ROADS	—
KING'S HIGHWAYS	—
RAILWAYS	—
POWER LINES	—
MARSH OR MUSKEG	—
MINES	⋈

NOTES

400' Reserve to Dept. of Lands & Forests shown thus: —

Mining Rights Only on Mining Cls. staked out and recorded on or after July 25, 50 Ontario Reg. 169-50 Ontario Gazette, Aug. 5, 50.

Mines & Minerals are Reserved by Ontario Reg. 199/50 Sept. 1/50

All Lands Bordering Abitibi River Subject to Flooding Rights: —



PLAN NO. T-81
DEPARTMENT OF MINES
—ONTARIO—

THE TOWNSHIP OF

GLACKMEYER

DISTRICT OF COCHRANE

PORCUPINE MINING DIVISION

SCALE: 1-INCH=40 CHAINS

LEGEND

PATENTED LAND	⊙
CROWN LAND SALE	C.S.
LEASES	⊖
LOCATED LAND	Loc.
LICENSE OF OCCUPATION	L.O.
MINING RIGHTS ONLY	M.R.O.
SURFACE RIGHTS ONLY	S.R.O.
ROADS	—
IMPROVED ROADS	—
KING'S HIGHWAYS	—
RAILWAYS	—
POWER LINES	—
MARSH OR MUSKEG	—
MINES	X

NOTES

400' Reserve to Dept. of Lands & Forests shown thus

• *Basic Use Permit*

43 *Surface + Mining Rights with survey from staking, sale or lease, Dec 11/73*

~~CANC. ORDER #NR. 0.91180 MAY 29/80~~

All Lands Bordering Abitibi River Subject to Flooding Rights to H.E.P.C.

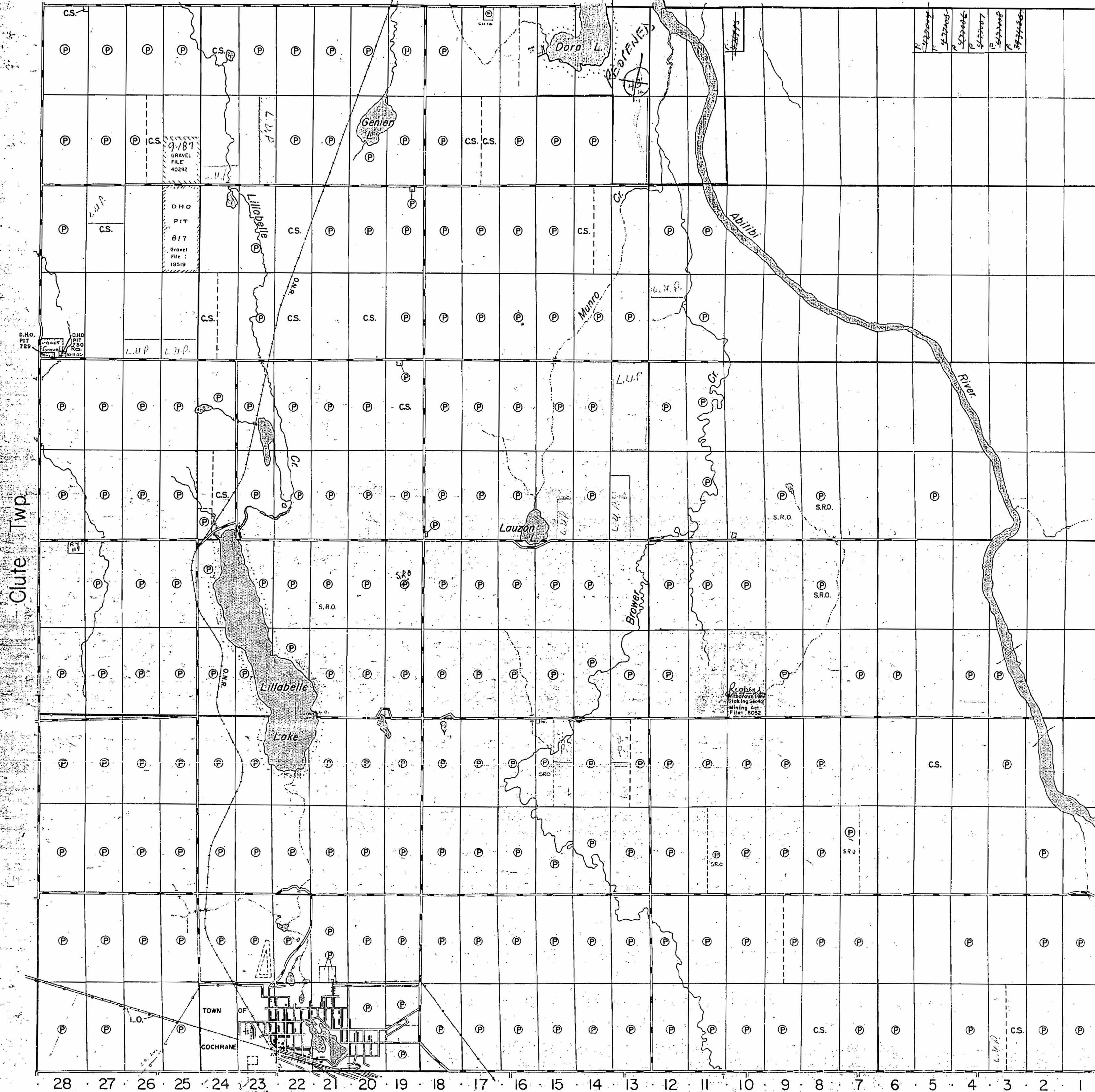
Lot, Split, Cont. S., respect -

RECEIVED
DEC 10 1973
AM 7 18 10 11 12 13 14 15 16 PM

PLAN NO- M-485

ONTARIO
MINISTRY OF NATURAL RESOURCES
SURVEYS AND MAPPING BRANCH

Blount Twp.



XII
XI
X
IX
VIII
VII
VI
V
IV
III
II
I

Kennedy Twp.

Lamarche Twp.

Brower Twp.

GEM

THE TOWNSHIP OF
OF
GLACKMEYER
DISTRICT OF COCHRANE
PORCUPINE MINING DIVISION
SCALE: 1-INCH= 40 CHAINS

LEGEND

PATENTED LAND	⊙
CROWN LAND SALE	C.S.
LEASES	⊖
LOCATED LAND	Loc.
LICENSE OF OCCUPATION	L.O.
MINING RIGHTS ONLY	M.R.O.
SURFACE RIGHTS ONLY	S.R.O.
ROADS	—
IMPROVED ROADS	—
KING'S HIGHWAYS	—
RAILWAYS	—
POWER LINES	—
MARSH OR MUSKEG	—
MINES	⊗
PATENTED for S.R.O.	⊙

NOTES

400' surface rights reservation along the shores of all lakes and rivers.

Flooding rights to El. 780' contour on Abitibi R. to Ontario Hydro

Areas withdrawn from staking under Section 43 of the Mining Act. (R.S.O. 70)
Order No. File Date Disposition

L.U.P. LAND USE PERMIT *

A.U.P. (recreational trail)

Ⓢ SNOWMOBILE TRAIL NOTICE RECEIVED 92-DEC-09

F.T. THIS TWP. IS SUBJECT TO FOREST ACTIVITIES IN 1994/95

DATE OF ISSUE
MAY 29 1998

PROVINCIAL RECORDING
OFFICE - SUBURBAN

THE INFORMATION THAT APPEARS ON THIS MAP HAS BEEN COMPILED FROM VARIOUS SOURCES, AND ACCURACY IS NOT GUARANTEED. THOSE WISHING TO STAKE MINING CLAIMS SHOULD CONSULT WITH THE MINING RECORDER, MINISTRY OF NORTHERN DEVELOPMENT AND MINES, FOR ADDITIONAL INFORMATION ON THE STATUS OF THE LANDS SHOWN HEREON.

PLAN NO- M-485

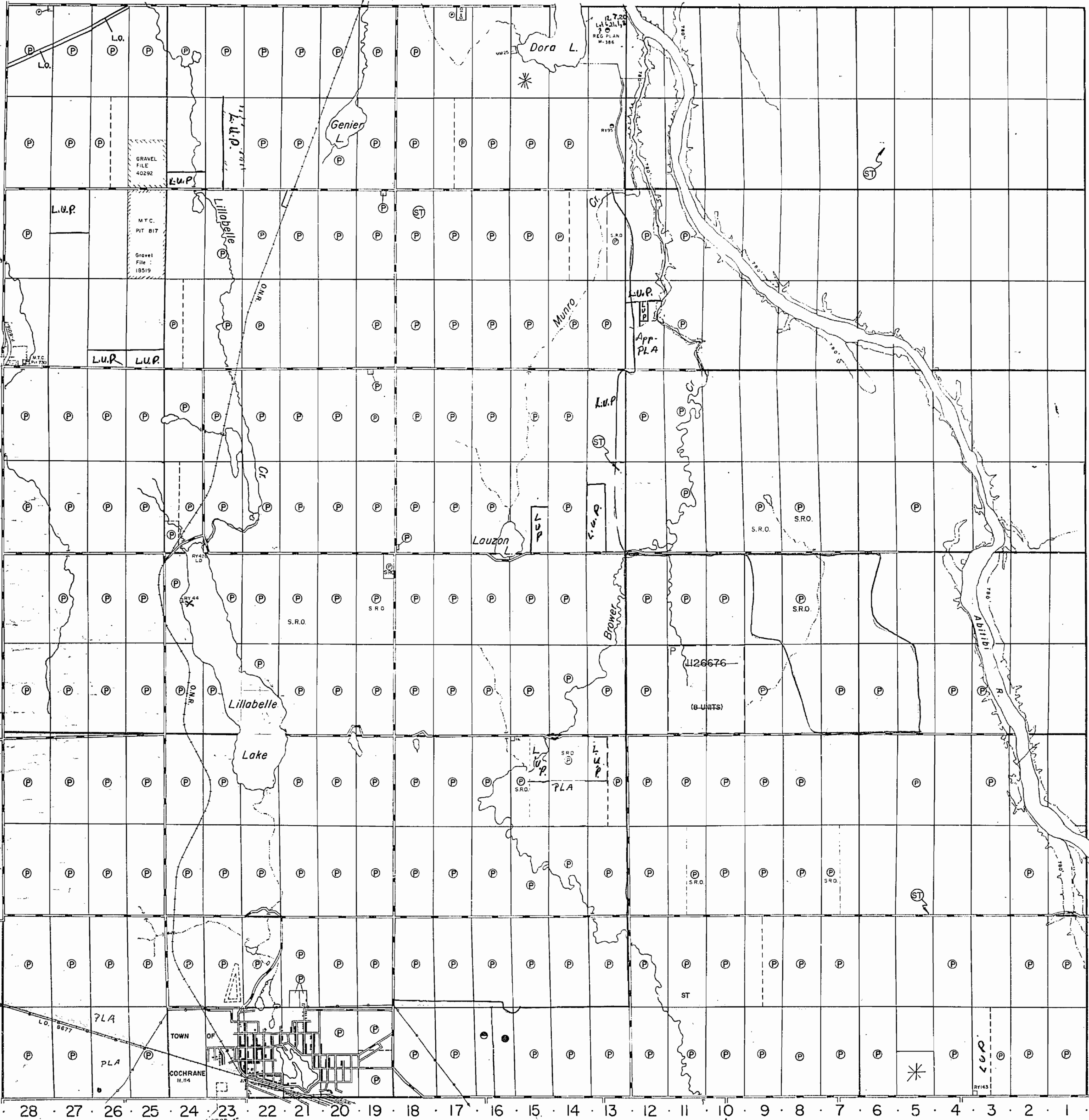
ONTARIO
MINISTRY OF NATURAL RESOURCES
SURVEYS AND MAPPING BRANCH



Lamarche Twp.
M. 526

Brower Twp.
M. 430

M.420
Blount Twp.



XII
XI
X
IX
VIII
VII
VI
V
IV
III
II
I

THE TOWNSHIP
OF
GLACKMEYER
DISTRICT OF
COCHRANE
PORCUPINE
MINING DIVISION
SCALE: 1-INCH=40 CHAINS

LEGEND

PATENTED LAND	⊕
CROWN LAND SALE	C.S.
LEASES	⊙
LOCATED LAND	Loc.
LICENSE OF OCCUPATION	L.O.
MINING RIGHTS ONLY	M.R.O.
SURFACE RIGHTS ONLY	S.R.O.
ROADS	—
IMPROVED ROADS	—
KING'S HIGHWAYS	—
RAILWAYS	—
POWER LINES	—
MARSH OR MUSKEG	—
MINES	⊗
*PATENTED for S.R.O.	⊙

NOTES

400' surface rights reservation along the shores of all lakes and rivers.

Flooding rights to El. 780' contour on Abitibi R. to Ontario Hydro

Areas withdrawn from staking under Section 43 of the Mining Act. (R.S.O. 70)

Order No.	File	Date	Disposition

L.U.P. LAND USE PERMIT *

L.O.P. (recreational trail)

ST SNOWMOBILE TRAIL NOTICE RECEIVED 92-DEC-09

FR THIS TWP. IS SUBJECT TO FOREST ACTIVITIES IN 1994/95

THE INFORMATION THAT APPEARS ON THIS MAP HAS BEEN COMPILED FROM VARIOUS SOURCES, AND ACCURACY IS NOT GUARANTEED. THOSE WISHING TO STAKE MINING CLAIMS SHOULD CONSULT WITH THE MINING RECORDER, MINISTRY OF NORTHERN DEVELOPMENT AND MINES, FOR ADDITIONAL INFORMATION ON THE STATUS OF THE LANDS SHOWN HEREON.

PLAN NO.- M-485

ONTARIO
MINISTRY OF NATURAL RESOURCES
SURVEYS AND MAPPING BRANCH

M.451
Clute Twp.

M.515
Kennedy Twp.

Lamarche Twp.
M.526

Brower Twp.
M.430

28 27 26 25 24 23 22 21 20 19 18 17 16 15 14 13 12 11 10 9 8 7 6 5 4 3 2 1

M.420
Blount Twp.



M.451
Clute Twp.

Lamarche Twp.
M. 526

Brower Twp.
M. 430

XII
XI
X
IX
VIII
VII
VI
V
IV
III
II
I

M.515
Kennedy Twp.

THE TOWNSHIP
OF
GLACKMEYER
DISTRICT OF
COCHRANE
PORCUPINE
MINING DIVISION
SCALE: 1-INCH= 40 CHAINS

LEGEND

PATENTED LAND	⊙
CROWN LAND SALE	C.S.
LEASES	⊖
LOCATED LAND	Loc.
LICENSE OF OCCUPATION	L.O.
MINING RIGHTS ONLY	M.R.O.
SURFACE RIGHTS ONLY	S.R.O.
ROADS	—
IMPROVED ROADS	—
KING'S HIGHWAYS	—
RAILWAYS	—
POWER LINES	—
MARSH OR MUSKEG	—
MINES	✱
PATENTED for S.R.O.	⊙

NOTES

400' surface rights reservation along the shores of all lakes and rivers.

Flooding rights to El. 780' contour on Abitibi R. to Ontario Hydro

Areas withdrawn from staking under Section 43 of the Mining Act. (R.S.O. 70)

Order No.	File	Date	Disposition

• L.U.P. LAND USE PERMIT ✱

— L.U.P. (recreational trail)

ST SNOWMOBILE TRAIL NOTICE RECEIVED 92-DEC-09

F₁ THIS TWP. IS SUBJECT TO FOREST ACTIVITIES IN 1994/95

DATE OF ISSUE

MAY 13 1996

PROVINCIAL RECORDING
OFFICE - SUDBURY

THE INFORMATION THAT APPEARS ON THIS MAP HAS BEEN COMPILED FROM VARIOUS SOURCES, AND ACCURACY IS NOT GUARANTEED. THOSE WISHING TO STAKE MINING CLAIMS SHOULD CONSULT WITH THE MINING RECORDER, MINISTRY OF NORTHERN DEVELOPMENT AND MINES, FOR ADDITIONAL INFORMATION ON THE STATUS OF THE LANDS SHOWN HEREON.

PLAN NO.- M-485

ONTARIO
MINISTRY OF NATURAL RESOURCES
SURVEYS AND MAPPING BRANCH

Blount Twp.

Clute Twp.

Lamarche Twp.

Brower Twp.

XII

XI

X

IX

VIII

VII

VI

V

IV

III

II

I

Kennedy Twp.

THE TOWNSHIP OF
OF
GLACKMEYER
DISTRICT OF COCHRANE
TIMISKAMING MINING DIVISION
SCALE: 1-INCH=40 CHAINS

LEGEND

PATENTED LAND	⊙
CROWN LAND SALE	C.S.
LEASES	⊖
LOCATED LAND	Loc.
LICENSE OF OCCUPATION	L.O.
MINING RIGHTS ONLY	M.R.O.
SURFACE RIGHTS ONLY	S.R.O.
ROADS	—
IMPROVED ROADS	—
KING'S HIGHWAYS	—
RAILWAYS	—
POWER LINES	—
MARSH OR MUSKEG	—
MINES	⋈

NOTES

400' Reserve to Dept. of Lands & Forests shown thus: ————

Mining Rights Only on Mining Cls. staked out and recorded on or after July 25, 50 Ontario Reg. 169-50—Ontario Gazette Aug. 5, 50.

Mines & Minerals are Reserved by Ontario Reg. 199/50 Sept. 1/50

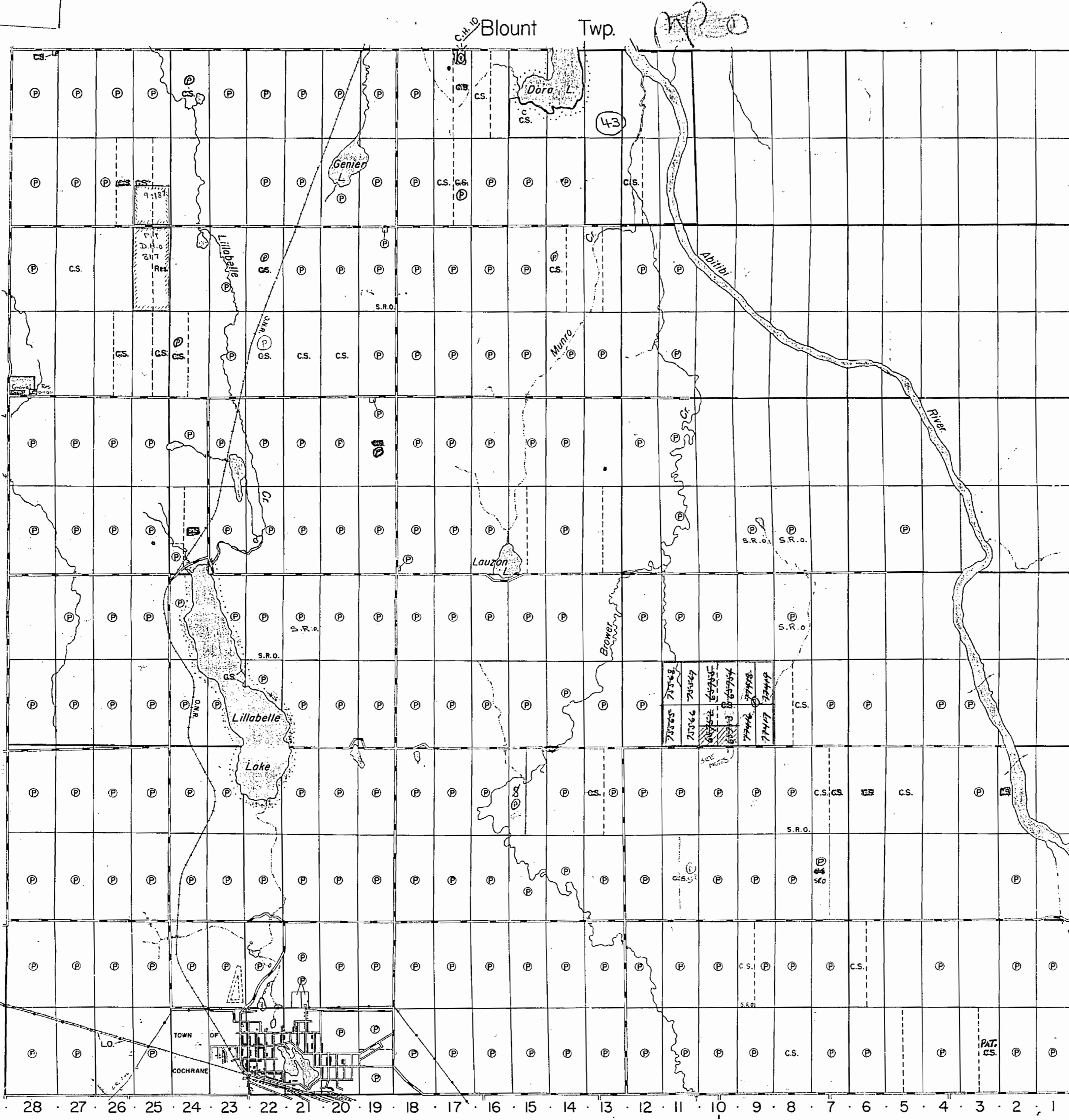
All Lands Bordering Abitibi River Subject to Flooding Rights: ————



M-485

PLAN NO. T-81

DEPARTMENT OF MINES —ONTARIO—



THE TOWNSHIP OF
GLACKMEYER
 DISTRICT OF COCHRANE
 PORCUPINE MINING DIVISION
 SCALE: 1-INCH=40 CHAINS

LEGEND

PATENTED LAND	⊕
CROWN LAND SALE	C.S.
LEASES	⊙
LOCATED LAND	Loc.
LICENSE OF OCCUPATION	L.O.
MINING RIGHTS ONLY	M.R.O.
SURFACE RIGHTS ONLY	S.R.O.
ROADS	—
IMPROVED ROADS	—
KING'S HIGHWAYS	—
RAILWAYS	—
POWER LINES	—
MARSH OR MUSKEG	—
MINES	✱

NOTES

400' Reserve to Dept. of Lands & Forests shown thus: —

Mining Rights Only on Mining Cls. staked out and recorded on or after July 25, 1950 - Ontario Reg. 169/50 - Ontario Gazette - Aug. 5, 1950. SEE LAND BOOK

Mines & Minerals are Reserved by Ontario Reg. 199/50 Sept. 1/50

All Lands Bordering Abitibi River Subject to Flooding Rights: H.C.P.C.

AREA SURROUNDING THIS WITHDRAWN FROM STAKING - SURFACE & MINING RIGHTS - BY A PERIOD OF FIVE YEARS FROM OCT 1/67 TO OCT. 1/72 - FOR REGIONAL DEVELOPMENT BY DEPT. OF ENERGY, MINES AND RESOURCES - CANADA

• Last Use Permit

(43) Surface & Mining Rights withdrawn from staking, sale or lease. Dec. 11/73

PLAN NO- M-485

DEPARTMENT OF MINES
 —ONTARIO—

XII
 XI
 X
 IX
 VIII
 VII
 VI
 V
 IV
 III
 II
 I

Kennedy Twp.

Clute Twp.

Blount Twp.

Lamarche Twp.

Brower Twp.

28 · 27 · 26 · 25 · 24 · 23 · 22 · 21 · 20 · 19 · 18 · 17 · 16 · 15 · 14 · 13 · 12 · 11 · 10 · 9 · 8 · 7 · 6 · 5 · 4 · 3 · 2 · 1

TOWN OF COCHRANE

Handwritten scribble

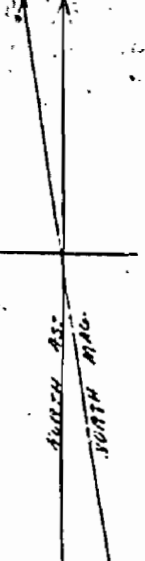
GLACKMEYER.

DISTRICT OF NIPISSING
now Timistaming.

Scale: - 40 Chains to 1 inch.

M 458

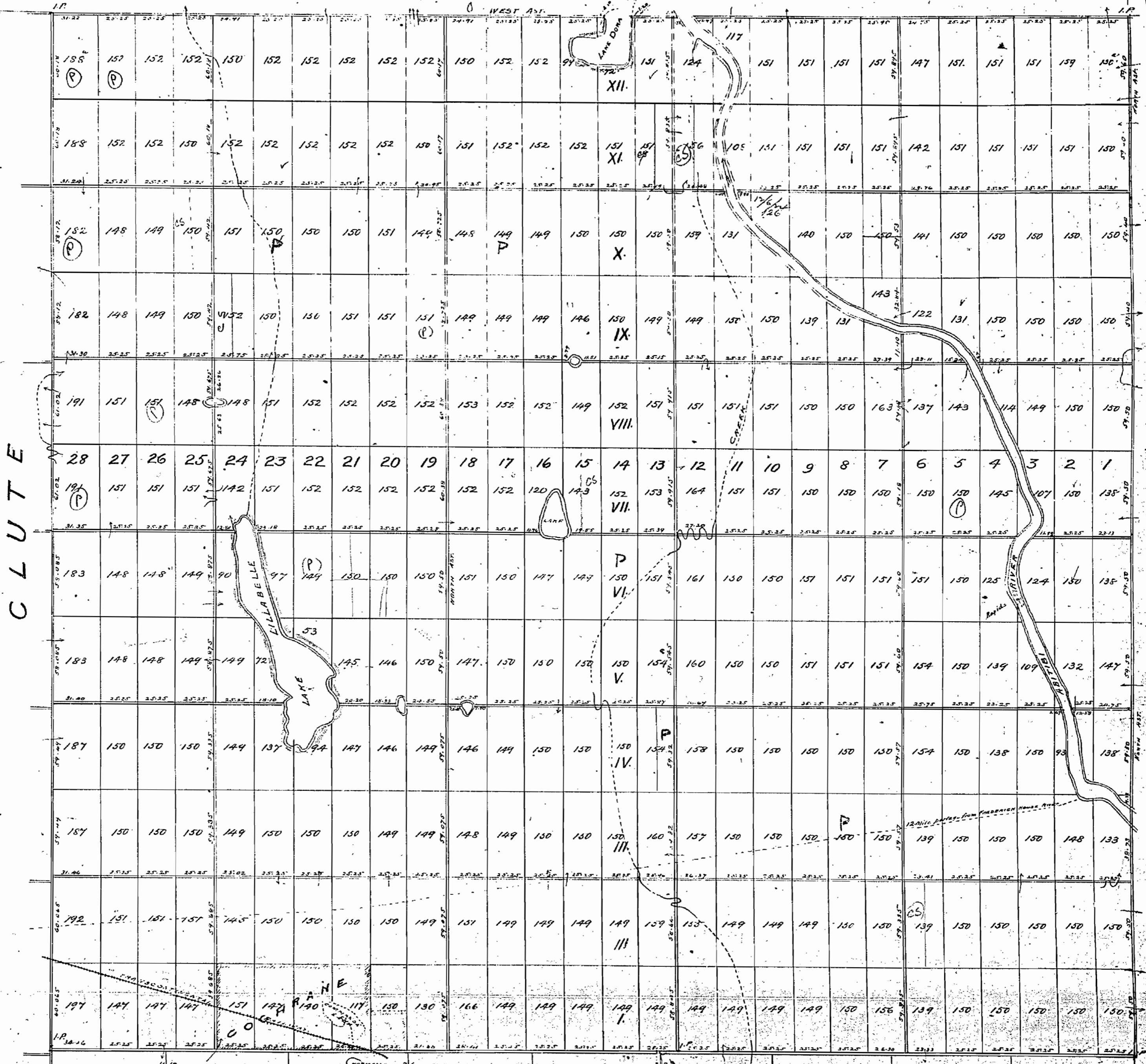
Mining Rights only - 25 July 50



Under C. & D. Agency, see Map of C. & D.

DISTRICT OF ALGOMA

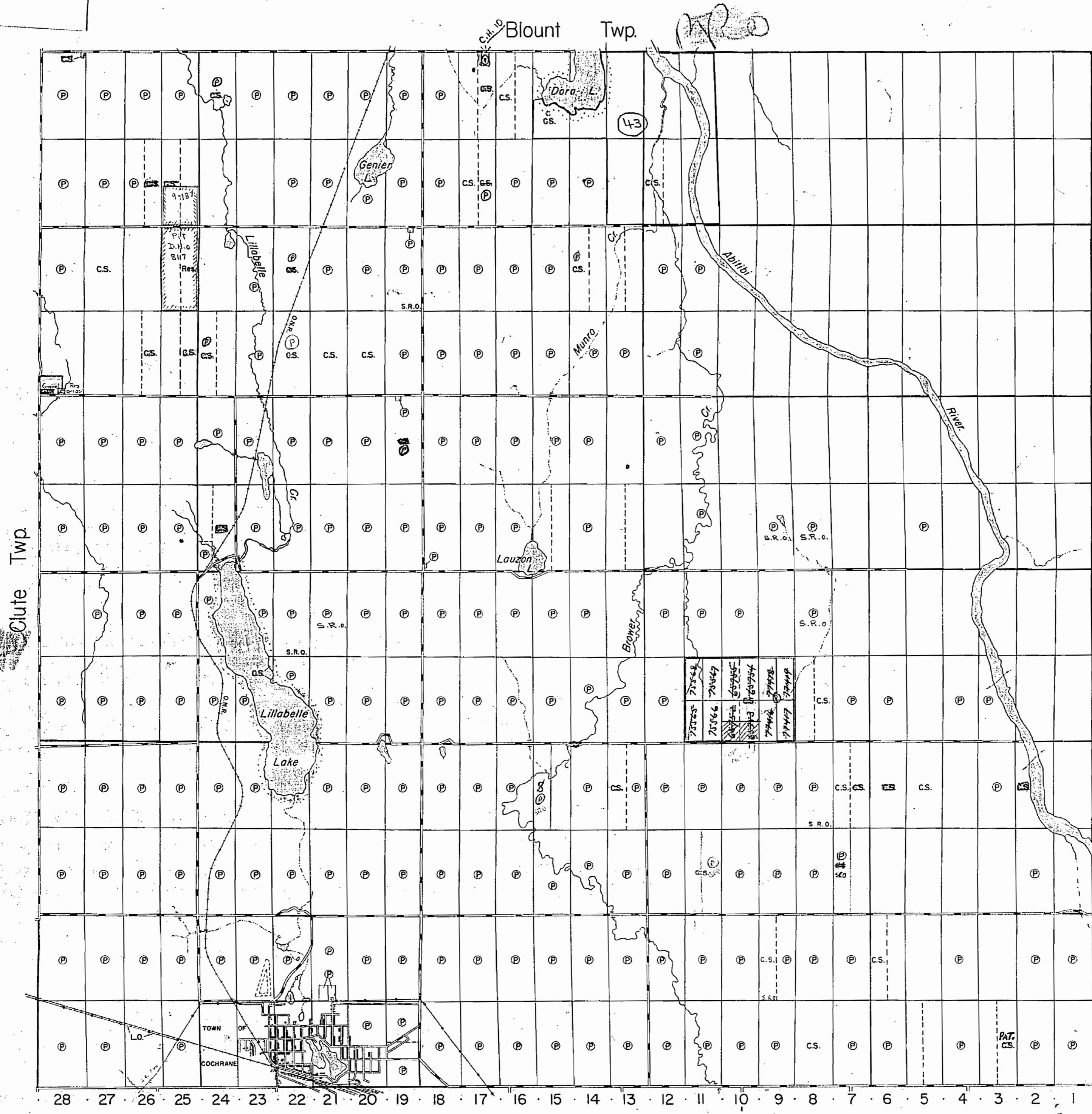
KENNEDY



LAMARCHE

BROWER

(Signed) A. S. Code O. L. S.
Dec. 12th 1907.



THE TOWNSHIP OF
GLACKMEYER
 DISTRICT OF COCHRANE
 PORCUPINE MINING DIVISION
 SCALE: 1-INCH=40 CHAINS

LEGEND

PATENTED LAND	⊙
CROWN LAND SALE	C.S.
LEASES	⊖
LOCATED LAND	⊙
LICENSE OF OCCUPATION	L.O.
MINING RIGHTS ONLY	M.R.O.
SURFACE RIGHTS ONLY	S.R.O.
ROADS	—
IMPROVED ROADS	—
KING'S HIGHWAYS	—
RAILWAYS	—
POWER LINES	—
MARSH OR MUSKEG	—
MINES	⊗

NOTES

400' Reserve to Dept. of Lands & Forests shown thus: [Symbol]

Mining Rights Only on Mining Cls. staked out and recorded on or after July 25, 1950 - Ontario Reg. 169-50 - Ontario Gazette - Aug. 5, 1950. SEE L.A.D. D.O.

Mines & Minerals are Reserved by Ontario Reg. 199/50 Sept. 1/50

All Lands Bordering Abitibi River Subject to Flooding Rights: U.E.P.C.

AREA SHOWN THIS WITHDRAWN FROM STAKE - SURFACE RIGHTS ONLY - FOR A PERIOD OF FIVE YEARS FROM OCT 1/67 TO OCT 1/72 - FOR REVENUE DEPARTMENT OF ENERGY, MINES AND RESOURCES - CANADA

• Land Use Permit

(43) Surface & Mining Rights withdrawn from staking, sale or lease. Dec. 11/73

PLAN NO.- M-485
 DEPARTMENT OF MINES
 —ONTARIO—