

* Sept 14/85

NOTES

400' surface rights reservation along the shores of all lakes and rivers.

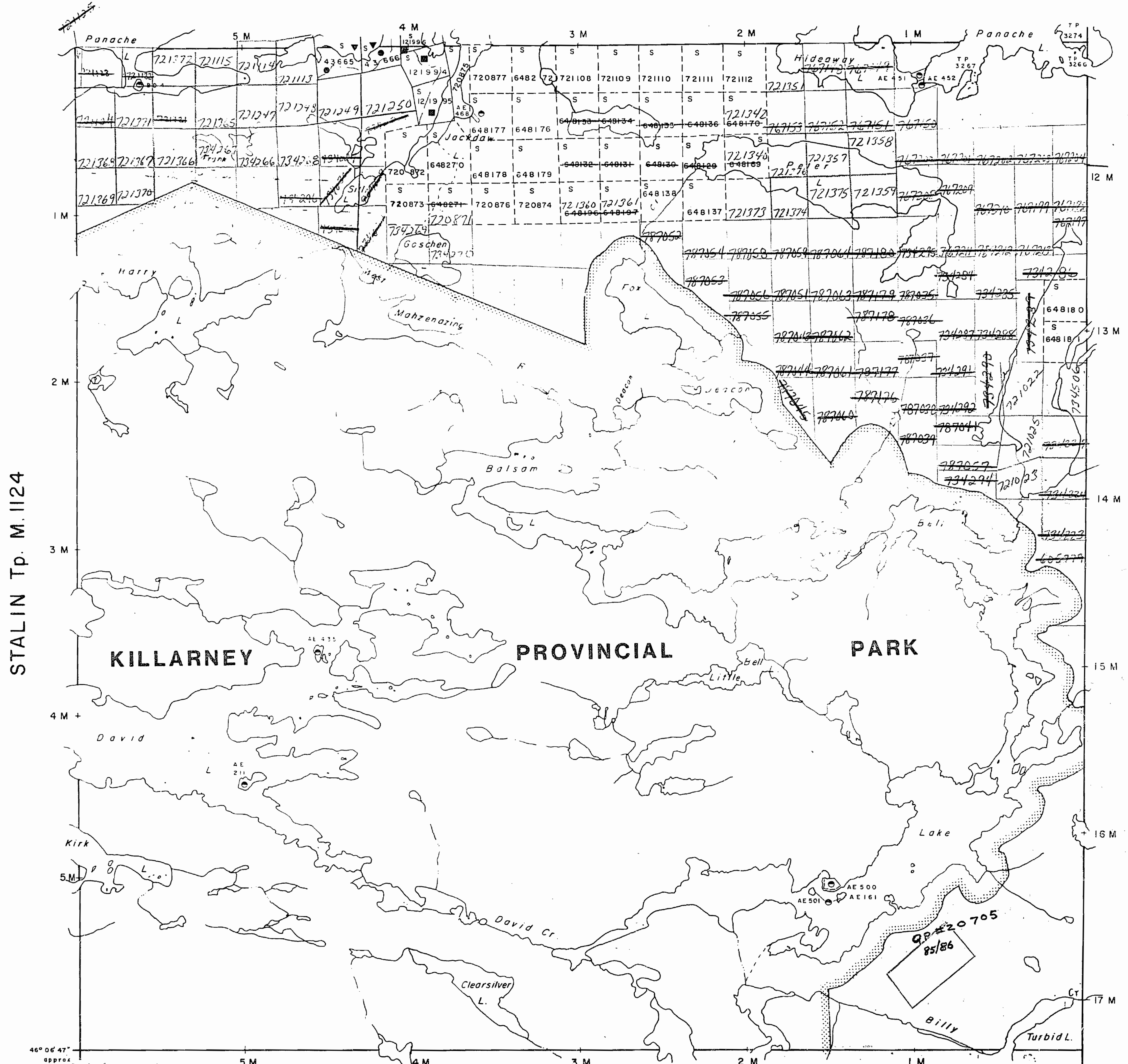
AREAS WITHDRAWN FROM DISPOSITION

- M.R.O. - MINING RIGHTS ONLY
- S.R.O. - SURFACE RIGHTS ONLY
- M.+S. - MINING AND SURFACE RIGHTS

Description	Order No.	Date	Disposition	File
-------------	-----------	------	-------------	------

* IN SERVICE 1983 09 14th. - UCM

CAEN Tp. M.696

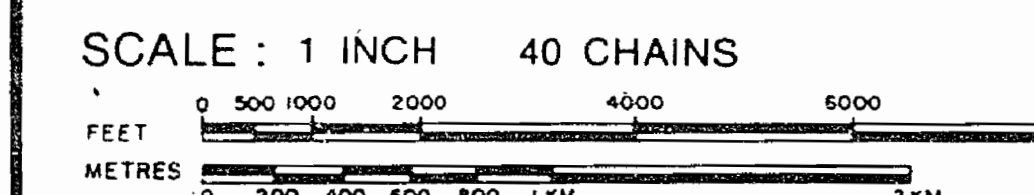


LEGEND

- HIGHWAY AND ROUTE No.
- OTHER ROADS
- TRAILS
- SURVEYED LINES:
 - TOWNSHIPS, BASE LINES, ETC.
 - LOTS, MINING CLAIMS, PARCELS, ETC.
- UNSURVEYED LINES:
 - LOT LINES
 - PARCEL BOUNDARY
 - MINING CLAIMS ETC.
- RAILWAY AND RIGHT OF WAY
- UTILITY LINES
- NON-PERENNIAL STREAM
- FLOODING OR FLOODING RIGHTS
- SUBDIVISION
- ORIGINAL SHORELINE
- MARSH OR MUSKEG
- MINES

DISPOSITION OF CROWN LANDS

TYPE OF DOCUMENT	SYMBOL
PATENT, SURFACE & MINING RIGHTS	
.. SURFACE RIGHTS ONLY	
.. MINING RIGHTS ONLY	
LEASE, SURFACE & MINING RIGHTS	
.. SURFACE RIGHTS ONLY	
.. MINING RIGHTS ONLY	
LICENCE OF OCCUPATION	
CROWN LAND SALE	C.S.
ORDER-IN-COUNCIL	OC
RESERVATION	
CANCELLED	
SAND & GRAVEL	



ACRES	HECTARES
40	16

TOWNSHIP

GOSCHEN

DISTRICT

SUDBURY

MINING DIVISION

SUDBURY



Ministry of Natural Resources

Ontario - Surveys and Mapping Branch

Date 1-75

Plan No.

Whitney Block
Queen's Park, Toronto

M. 892

GOSCHEN

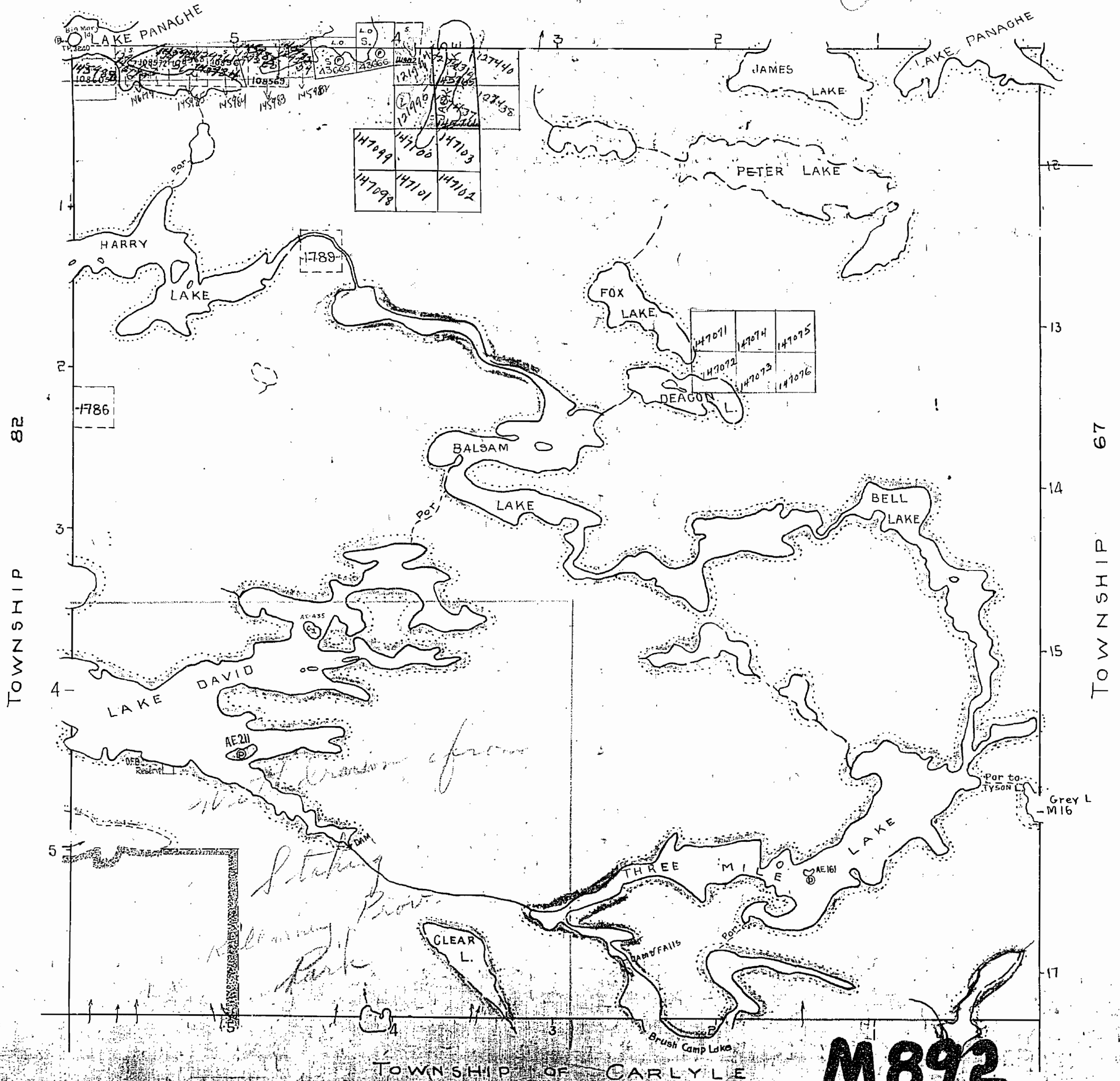
DISTRICT OF SUDBURY

Deeds in Lake Panage withdrawn from staking Nov. 23/26 Act. 39 (ch. 4)

Scale 40 Chains = 1 Inch

Old

CAEN TWP.



AREA SHOWN THIS WITHDRAWN FROM STAKING RESERVED FOR PARK PURPOSES FILE 163005

Surface reservation also made by Dept of L. & E. shown hereon this

M892

GOSCHEN

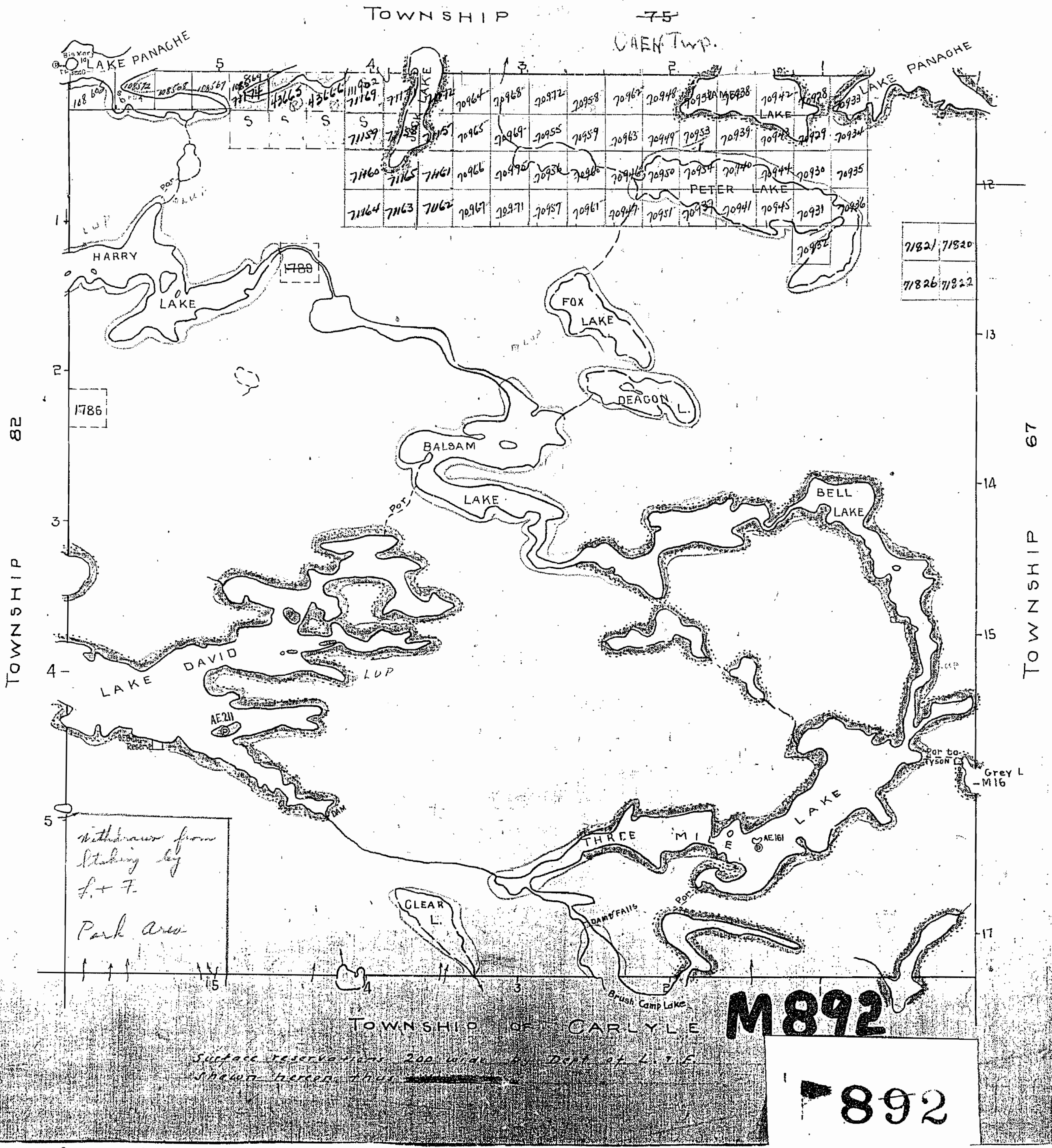
Old

Islands on Panache Lake withdrawn from Staking 7/00 22/26 but 29 sub. (c)

DISTRICT OF SUDBURY

Scale 40Chains = 1 Inch

400' Res.



Withdrawn from Staking by L. + F. Park Area

M892

892

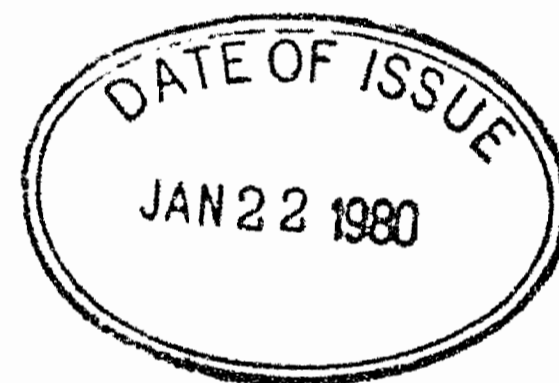
Surface reservations 200 wide by Dept. of L. & E. shown hereon thus

NOTES

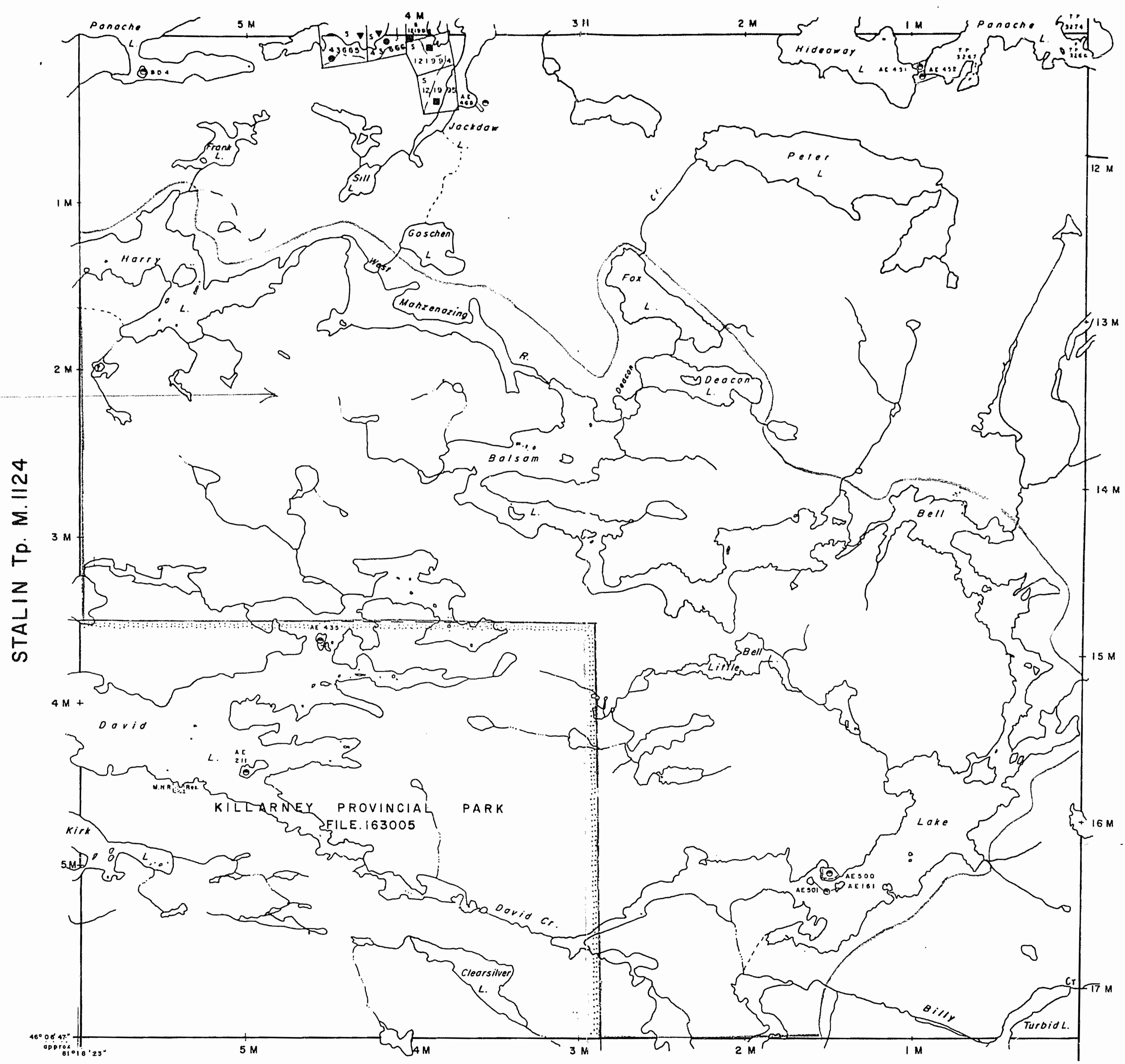
* 400' surface rights reservation along the shores of all lakes and rivers.

All islands in Panache Lake withdrawn from staking November 23 1926

Withdrawal Order No. W.13/80
 Proposal July 24, 1980
 See Memo of D.M. to M.R.



CAEN Tp. M.696



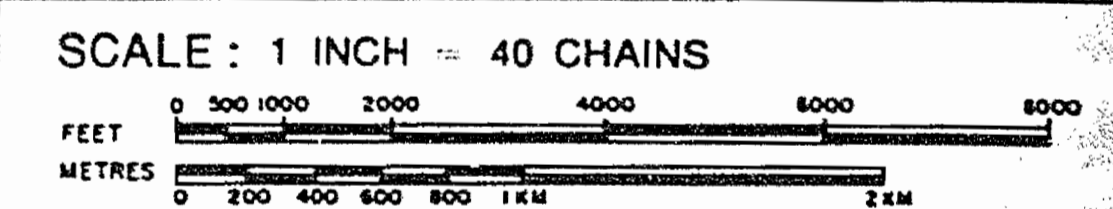
CARLYLE Tp. M.702

LEGEND

HIGHWAY AND ROUTE No.	
OTHER ROADS	
TRAILS	
SURVEYED LINES:	
TOWNSHIPS, BASE LINES, ETC.	
LOTS, MINING CLAIMS, PARCELS, ETC.	
UNSURVEYED LINES:	
LOT LINES	
PARCEL BOUNDARY	
MINING CLAIMS ETC.	
RAILWAY AND RIGHT OF WAY	
UTILITY LINES	
NON-PERENNIAL STREAM	
FLOODING OR FLOODING RIGHTS	
SUBDIVISION	
ORIGINAL SHORELINE	
MARSH OR MUSKEG	
MINES	

DISPOSITION OF CROWN LANDS

TYPE OF DOCUMENT	SYMBOL
PATENT, SURFACE & MINING RIGHTS	
" SURFACE RIGHTS ONLY	
" MINING RIGHTS ONLY	
LEASE, SURFACE & MINING RIGHTS	
" SURFACE RIGHTS ONLY	
" MINING RIGHTS ONLY	
LICENCE OF OCCUPATION	
CROWN LAND SALE	
ORDER-IN-COUNCIL	
RESERVATION	
CANCELLED	
SAND & GRAVEL	



ACRES	HECTARES
40	16

TOWNSHIP
GOSCHEN
 DISTRICT
 SUDBURY
 MINING DIVISION
 SUDBURY

Ministry of Natural Resources
 Ontario Surveys and Mapping Branch
 Date 1-75 Plan No. **M.892**
 Whitney Block Queen's Park, Toronto

BEVIN Tp. M.662

SALE Tp. M.1086

STALIN Tp. M.1124

46° 04' 47" APPROX 81° 10' 23"

588 M

GOSCHEN Twp.

588 M

NOTES

400' surface rights reservation along the shores of all lakes and rivers.

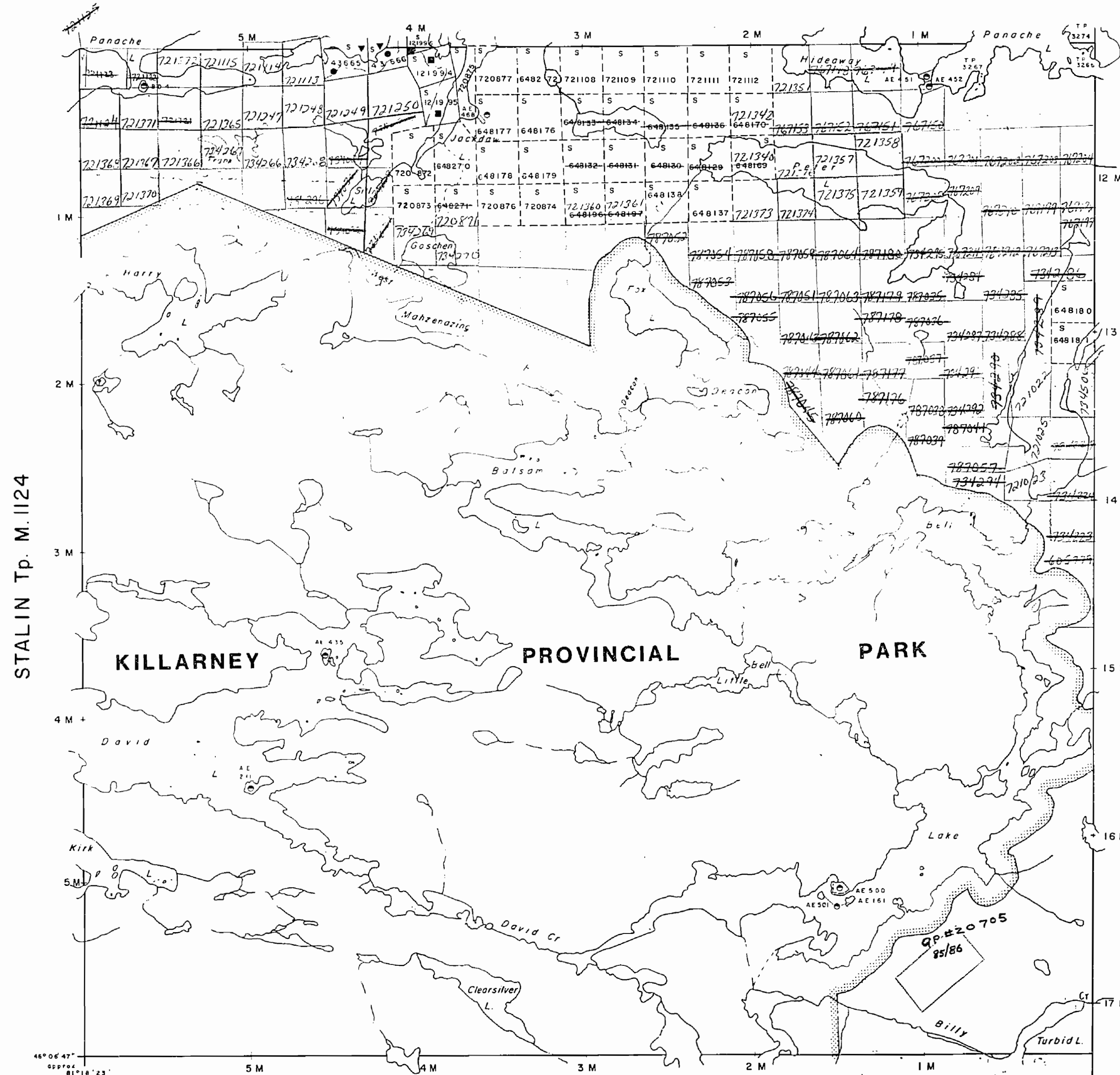
AREAS WITHDRAWN FROM DISPOSITION

- M.R.O. - MINING RIGHTS ONLY
- S.R.O. - SURFACE RIGHTS ONLY
- M.+S. - MINING AND SURFACE RIGHTS

Description	Order No.	Date	Disposition	File
* IN SERVICE 1983 09 14th. - Jcm				

* IN SERVICE 1983 09 14th. - Jcm

CAEN Tp. M.696



CARLYLE Tp. M.702

LEGEND

- HIGHWAY AND ROUTE No. [Symbol]
- OTHER ROADS [Symbol]
- TRAILS [Symbol]
- SURVEYED LINES:
 - TOWNSHIPS, BASE LINES, ETC. [Symbol]
 - LOTS, MINING CLAIMS, PARCELS, ETC. [Symbol]
- UNSURVEYED LINES:
 - LOT LINES [Symbol]
 - PARCEL BOUNDARY [Symbol]
 - MINING CLAIMS ETC. [Symbol]
- RAILWAY AND RIGHT OF WAY [Symbol]
- UTILITY LINES [Symbol]
- NON-PERENNIAL STREAM [Symbol]
- FLOODING OR FLOODING RIGHTS [Symbol]
- SUBDIVISION [Symbol]
- ORIGINAL SHORELINE [Symbol]
- MARSH OR MUSKEG [Symbol]
- MINES [Symbol]

DISPOSITION OF CROWN LANDS

TYPE OF DOCUMENT	SYMBOL
PATENT, SURFACE & MINING RIGHTS	[Symbol]
SURFACE RIGHTS ONLY	[Symbol]
MINING RIGHTS ONLY	[Symbol]
LEASE, SURFACE & MINING RIGHTS	[Symbol]
SURFACE RIGHTS ONLY	[Symbol]
MINING RIGHTS ONLY	[Symbol]
LICENCE OF OCCUPATION	[Symbol]
CROWN LAND SALE	C.S.
ORDER-IN-COUNCIL	OC
RESERVATION	[Symbol]
CANCELLED	[Symbol]
SAND & GRAVEL	[Symbol]

SCALE: 1 INCH = 40 CHAINS



TOWNSHIP

GOSCHEN

DISTRICT

SUDBURY
 MINING DIVISION
 SUDBURY



Ministry of Natural Resources

Ontario - Surveys and Mapping Branch

Date 1-75

Plan No.

Whitney Block
Queen's Park, Toronto

M. 892

588 M

GOSCHEN Twp.

588 M

MAP SYMBOLOGY

Aerial Cableway	Pipeline
Boundary	Railroad
International	Single Track
Provincial	Double Track
District, Township, Lot, Concession	Abandoned
Approximate	Terracing
Bridge	Road
Road, Railroad	Highway, County
Building	Township
Chimney	Access (road of doubtful maintenance or significant driveway)
Cliff, Pit, Pile	Trail, Back Road (portage, alley)
Contours	Rapids
Intermittent	Double line river with multiple rapids
Approximate	Double line river with multiple rapids
Depression	Reservoir
Control Points	River, Stream, Canal
Horizontal	Approximate
Vertical	Approximate
Culvert	Direction of flow
Falls	Rock
Double line river	Significant
Fence, Hedge, Wall	Shoal
Feature Outline	Spot Elevation
(Construction features, etc.)	(like elevations) 100.0
Flooded Land	Tower
Lock	Transmission Line
Marsh or Swamp	Poles
Mast	Pylons
Mine Head Frame	Tunnel
Outcrop	Utility Poles
	Wharf, Dock, Pier
	Wooded Area

AREAS WITHDRAWN FROM DISPOSITION

M.R.O. - MINING RIGHTS ONLY				
S.R.O. - SURFACE RIGHTS ONLY				
M+S. - MINING AND SURFACE RIGHTS				
Description	Order No.	Date	Disposition	File

SAND and GRAVEL

QUARRY PERMIT

CAEN TWP.

STALIN TWP.

CARLYLE TWP.

BEVIN TWP.

SALE TWP.

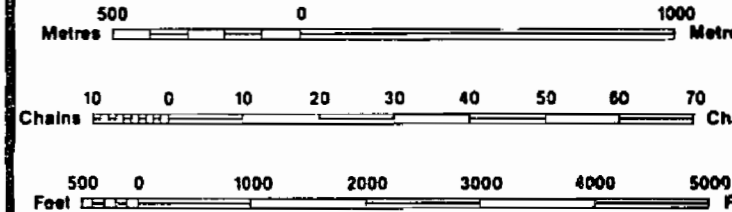
LEGEND

HIGHWAY AND ROUTE No.	
OTHER ROADS	
TRAILS	
SURVEYED LINES:	
TOWNSHIPS, BASE LINES, ETC.	
LOTS, MINING CLAIMS, PARCELS, ETC.	
UNSURVEYED LINES:	
LOT LINES	
PARCEL BOUNDARY	
MINING CLAIMS ETC.	
RAILWAY AND RIGHT OF WAY	
UTILITY LINES	
NON-PERENNIAL STREAM	
FLOODING OR FLOODING RIGHTS	
SUBDIVISION OR COMPOSITE PLAN	
RESERVATIONS	
ORIGINAL SHORELINE	
MARSH OR MUSKEG	
MINES	
TRAVERSE MONUMENT	

DISPOSITION OF CROWN LANDS

TYPE OF DOCUMENT	SYMBOL
PATENT, SURFACE & MINING RIGHTS	●
" SURFACE RIGHTS ONLY	○
" MINING RIGHTS ONLY	◐
LEASE, SURFACE & MINING RIGHTS	■
" SURFACE RIGHTS ONLY	◼
" MINING RIGHTS ONLY	◑
LICENCE OF OCCUPATION	◔
ORDER-IN-COUNCIL	OC
RESERVATION	○
CANCELLED	○
SAND & GRAVEL	○

NOTE: MINING RIGHTS IN PARCELS PATENTED PRIOR TO MAY 6, 1913, VESTED IN ORIGINAL PATENTEE BY THE PUBLIC LANDS ACT, R.S.O. 1910, CHAP. 380, SEC. 83, SUBSEC. 1.



SCALE 1:20 000

GRID ZONE: 17

THE INFORMATION THAT APPEARS ON THIS MAP HAS BEEN COMPILED FROM VARIOUS SOURCES, AND ACCURACY IS NOT GUARANTEED. THOSE WISHING TO STAKE MINING CLAIMS SHOULD CONSULT WITH THE MINING RECORDER, MINISTRY OF NORTHERN DEVELOPMENT AND MINES, FOR ADDITIONAL INFORMATION ON THE STATUS OF THE LANDS SHOWN HEREON.

DATE OF ISSUE

MAY - 7 1992

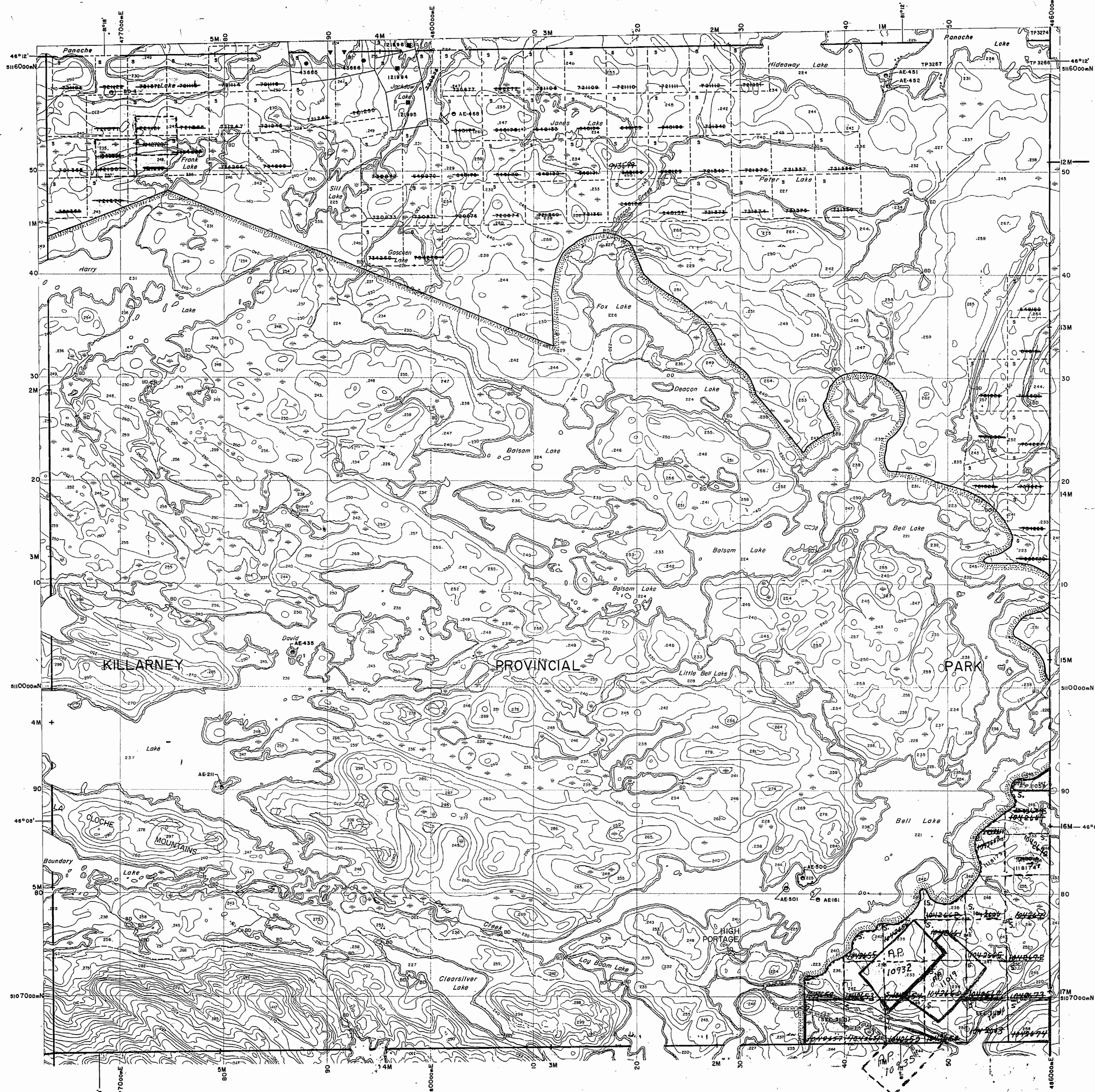
SUBSURY
MINING RECORDER'S OFFICE

TOWNSHIP
GOSCHEN

M.N.R. ADMINISTRATIVE DISTRICT
SUBSURY
MINING DIVISION
SUBSURY
LAND TITLES / REGISTRY DIVISION
SUBSURY



Original Completion: JUNE, 1986
Number
G-3199



MAP SYMBOLOLOGY

Aerial Cableway	Pipeline (above ground)
Boundary	Railroad
International	Single Track
District, Township	Double Track
Indian Reserve	Abandoned
Accession	Turbine
Lot, Concession	Road
Appropriate	Highway, County
Part Boundary	Township
Bridge	Access (trace of doubtful
Road, Railroad	metamorphic or significant driveway)
Building	Trail, Back Road (portage, alley)
Chimney	Rapids
Cliff, Pit, Pile	Double line river with multiple rapids
Contours	Double line river with multiple rapids
Intermittent	Reservoir
Approximate	River, Stream, Canal
Depression	Approximate
Control Points	Direction of flow
Horizontal	Rock
Vertical	Shoal
Culvert	Spot Elevation (above elevation)
Falls	Tower
Double line river	Transmission Line
Fence, Hedge, Wall	Pole
Feature Outline (Construction features, etc.)	Pyrene
Flooded Land	Tunnel
Lock	Utility Poles
Marsh or Swamp	Wharf, Dock, Pier
Mast	Wooded Area
Mine Head Frame	
Outcrop	

AREAS WITHDRAWN FROM DISPOSITION

M.R.O. - MINING RIGHTS ONLY				
S.R.O. - SURFACE RIGHTS ONLY				
M.+S. - MINING AND SURFACE RIGHTS				
Description	Order No.	Date	Disposition	File

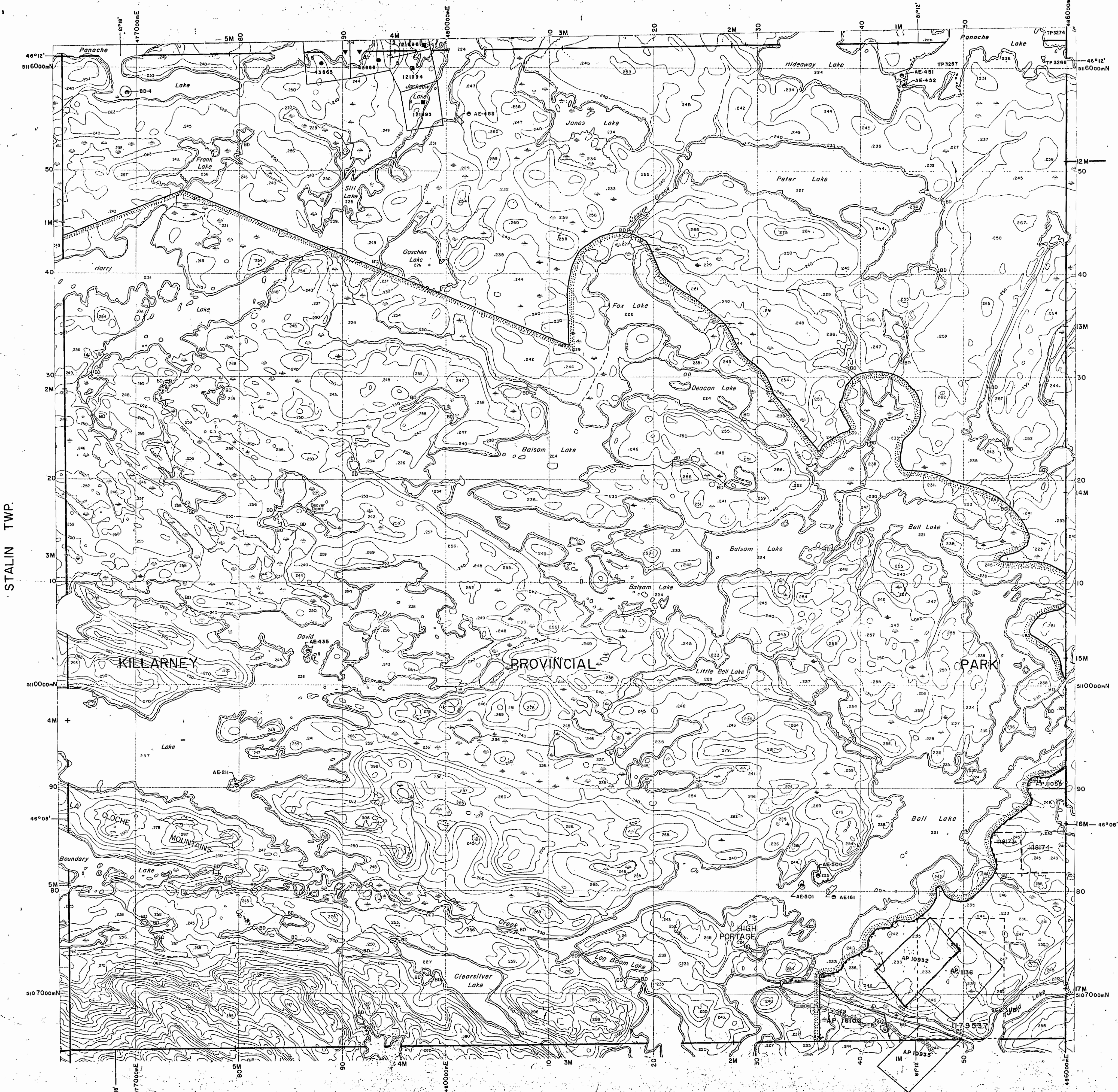
DATE OF ISSUE

JUN 16 1999
PROVINCIAL RECORDING OFFICE - SUDBURY

SAND and GRAVEL

QUARRY PERMIT
AP 10932 EXPIRY MAY 15, 1994
AP 10935 EXPIRY MAY 28, 1994
AP 1075 EXPIRY OCT. 23, 1992
AP 16106 EXPIRY MAY 31, 1998

CAEN TWP.



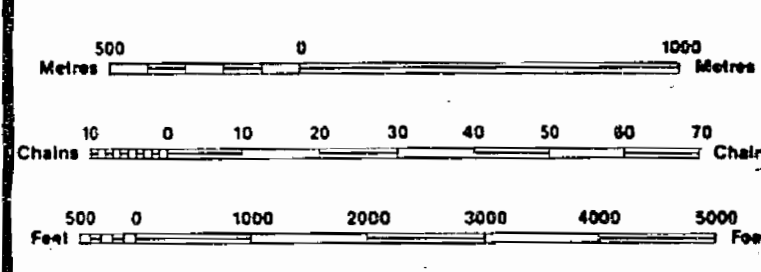
LEGEND

HIGHWAY AND ROUTE No.	
OTHER ROADS	
TRAILS	
SURVEYED LINES:	
TOWNSHIPS, BASE LINES, ETC.	
LOTS, MINING CLAIMS, PARCELS, ETC.	
UNSURVEYED LINES:	
LOT LINES	
PARCEL BOUNDARY	
MINING CLAIMS ETC.	
RAILWAY AND RIGHT OF WAY	
UTILITY LINES	
NON-PERENNIAL STREAM	
FLOODING OR FLOODING RIGHTS	
SUBDIVISION OR COMPOSITE PLAN	
RESERVATIONS	
ORIGINAL SHORELINE	
MARSH OR MUSKEG	
MINES	
TRAVERSE MONUMENT	

DISPOSITION OF CROWN LANDS

TYPE OF DOCUMENT	SYMBOL
PATENT, SURFACE & MINING RIGHTS	●
" SURFACE RIGHTS ONLY	○
" MINING RIGHTS ONLY	◐
LEASE, SURFACE & MINING RIGHTS	■
" SURFACE RIGHTS ONLY	□
" MINING RIGHTS ONLY	◑
LICENCE OF OCCUPATION	▽
ORDER-IN-COUNCIL	OC
RESERVATION	○
CANCELLED	○
SAND & GRAVEL	○

NOTE: MINING RIGHTS IN PARCELS PATENTED PRIOR TO MAY 6, 1913, VESTED IN ORIGINAL PATENTEES BY THE PUBLIC LANDS ACT, R.S.O. 1970, CHAP. 380, SEC. 63, SUBSEC. 1.



SCALE 1:20 000

GRID ZONE: 17

THE INFORMATION THAT APPEARS ON THIS MAP HAS BEEN COMPILED FROM VARIOUS SOURCES, AND ACCURACY IS NOT GUARANTEED. THOSE WISHING TO STAKE MINING CLAIMS SHOULD CONSULT WITH THE MINING RECORDER, MINISTRY OF NORTHERN DEVELOPMENT AND MINES, FOR ADDITIONAL INFORMATION ON THE STATUS OF THE LANDS SHOWN HEREON.

TOWNSHIP
GOSCHEN
M.N.R. ADMINISTRATIVE DISTRICT
SUDBURY
MINING DIVISION
SUDBURY
LAND TITLES / REGISTRY DIVISION
SUDBURY

Ministry of Natural Resources
Land Management Branch
Ontario

Original Compilation: JUNE, 1985
Number: G-3199
Revised:

MAP SYMBOLOGY

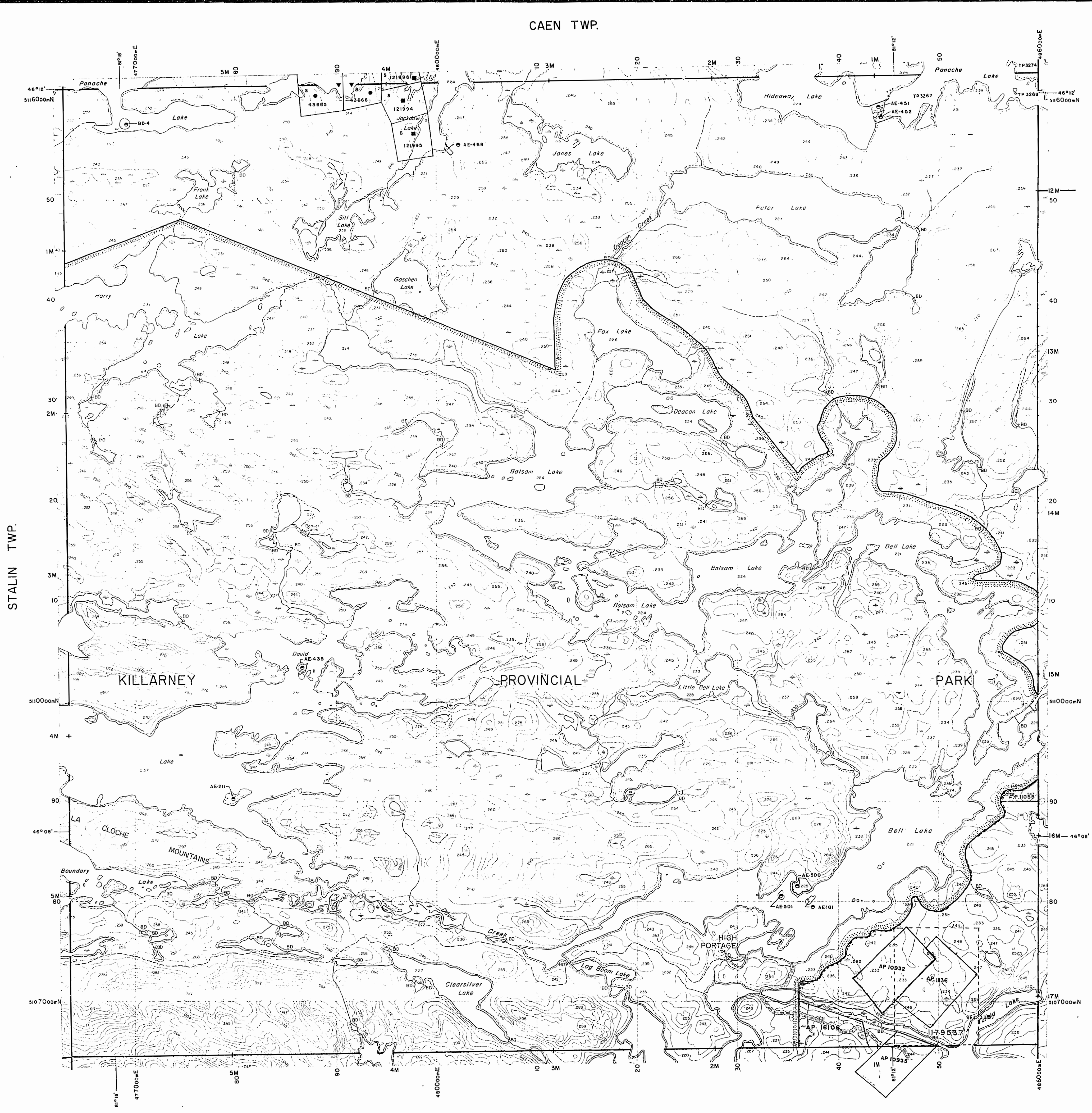
Aerial Cowlway	Pipeline (above ground)
Boundary	Railroad
Intermittent	Single Track
Disturbance	Double Track
Approximate	Abandoned
Lot, Concession	Road
Approximate	Highway, County
Path Boundary	Township
Bridge	Access (road of doubtful maintenance or significant driveway)
Man, Railroad	Trail, Back Road (not for utility)
Building	Double line river with multiple rapids
Chimney	Rapids
Cliff, Pit, Pile	Double line river with multiple rapids
Contours	Reservoir
Interpolated	River, Stream, Canal
Approximate	Approximate
Depression	Approximate
Control Points	Approximate
Horizontal	Approximate
Vertical	Approximate
Culvert	Approximate
Falls	Approximate
Depth line river	Approximate
Fence, Hedge, Wall	Approximate
Feature Outline (Construction features, etc.)	Approximate
Flooded Land	Approximate
Marsh or Swamp	Approximate
Moat	Approximate
Mine Head Frame	Approximate
Outcrop	Approximate

AREAS WITHDRAWN FROM DISPOSITION

M.R.O. - MINING RIGHTS ONLY				
S.R.O. - SURFACE RIGHTS ONLY				
M.+S. - MINING AND SURFACE RIGHTS				
Description	Order No.	Date	Disposition	File

SAND and GRAVEL

QUARRY PERMIT
AP 10932 EXPIRY MAY 13, 1994
AP 10935 EXPIRY MAY 28, 1994
AP 11075 EXPIRY OCT. 23, 1992
AP 16106 EXPIRY MAY 31, 1998

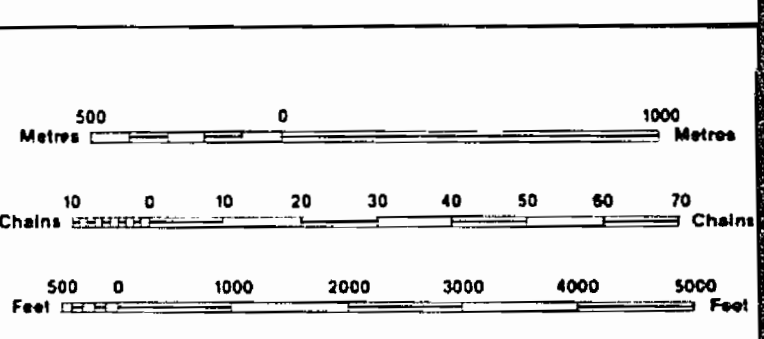


LEGEND

HIGHWAY AND ROUTE No	
OTHER ROADS	
TRAILS	
SURVEYED LINES:	
TOWNSHIPS, BASE LINES, ETC.	
LOTS, MINING CLAIMS, PARCELS, ETC.	
UNSURVEYED LINES:	
LOT LINES	
PARCEL BOUNDARY	
MINING CLAIMS ETC.	
RAILWAY AND RIGHT OF WAY	
UTILITY LINES	
NON PERENNIAL STREAM	
FLOODING OR FLOODING RIGHTS	
SUBDIVISION OR COMPOSITE PLAN	
RESERVATIONS	
ORIGINAL SHORELINE	
MARSH OR MUSKEG	
MINES	
TRAVERSE MONUMENT	

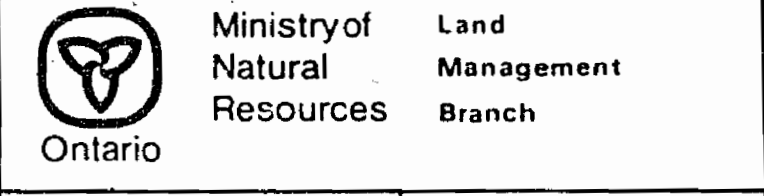
DISPOSITION OF CROWN LANDS

TYPE OF DOCUMENT	SYMBOL
PATENT, SURFACE & MINING RIGHTS	
" SURFACE RIGHTS ONLY	
" MINING RIGHTS ONLY	
LEASE, SURFACE & MINING RIGHTS	
" SURFACE RIGHTS ONLY	
" MINING RIGHTS ONLY	
LICENCE OF OCCUPATION	
ORDER-IN-COUNCIL	
RESERVATION	
CANCELLED	
SAND & GRAVEL	



THE INFORMATION THAT APPEARS ON THIS MAP HAS BEEN COMPILED FROM VARIOUS SOURCES AND ACCURACY IS NOT GUARANTEED. THOSE WISHING TO STAKE MINING CLAIMS SHOULD CONSULT WITH THE MINING RECORDER, MINISTRY OF NORTHERN DEVELOPMENT AND MINES, FOR ADDITIONAL INFORMATION ON THE STATUS OF THE LANDS SHOWN HEREON.

TOWNSHIP
GOSCHEN
M.N.R. ADMINISTRATIVE DISTRICT
SUDBURY
MINING DIVISION
SUDBURY
LAND TITLES / REGISTRY DIVISION
SUDBURY



Original Completion: JUNE, 1985
Number: **G-3199**

BEVIN TWP.

SALE TWP.

CAEN TWP.

CARLYLE TWP.

STALIN TWP.

KILLARNEY

PROVINCIAL

PARK

CLOCHE MOUNTAINS

HIGH PORTAGE

892

GOSCHEN

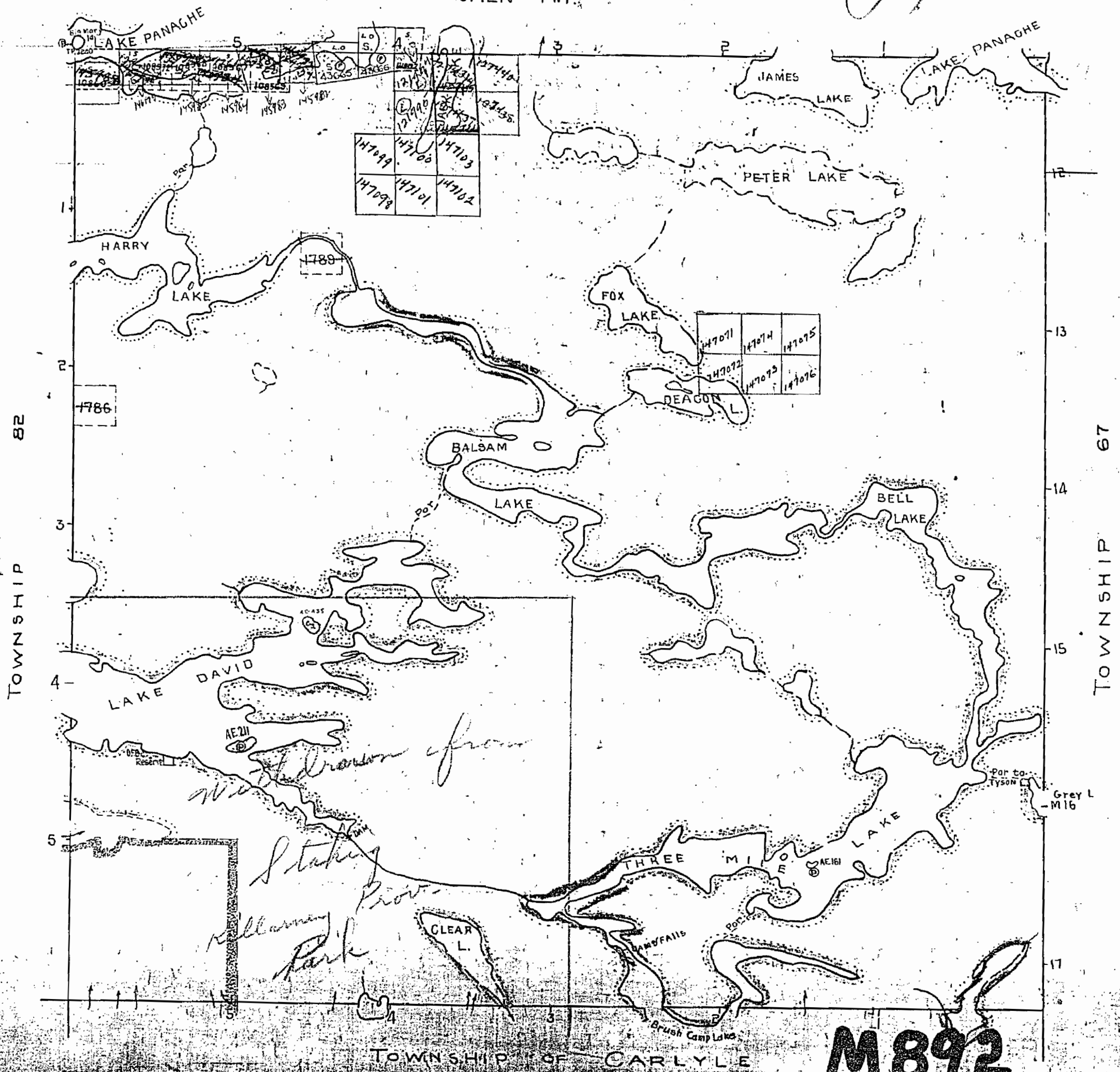
DISTRICT OF SUDBURY

Delimited in Lake Passage withdrawn from staking Nov. 23/26 Sect. 39 Sub. (c)

Scale 40 Chains = 1 Inch

DD

CAEN TWP.



AREA SHOWN THUS WITHDRAWN FROM STAKING RESERVED FOR PARK PURPOSES FILE 163005

M892

892

GOSCHEN

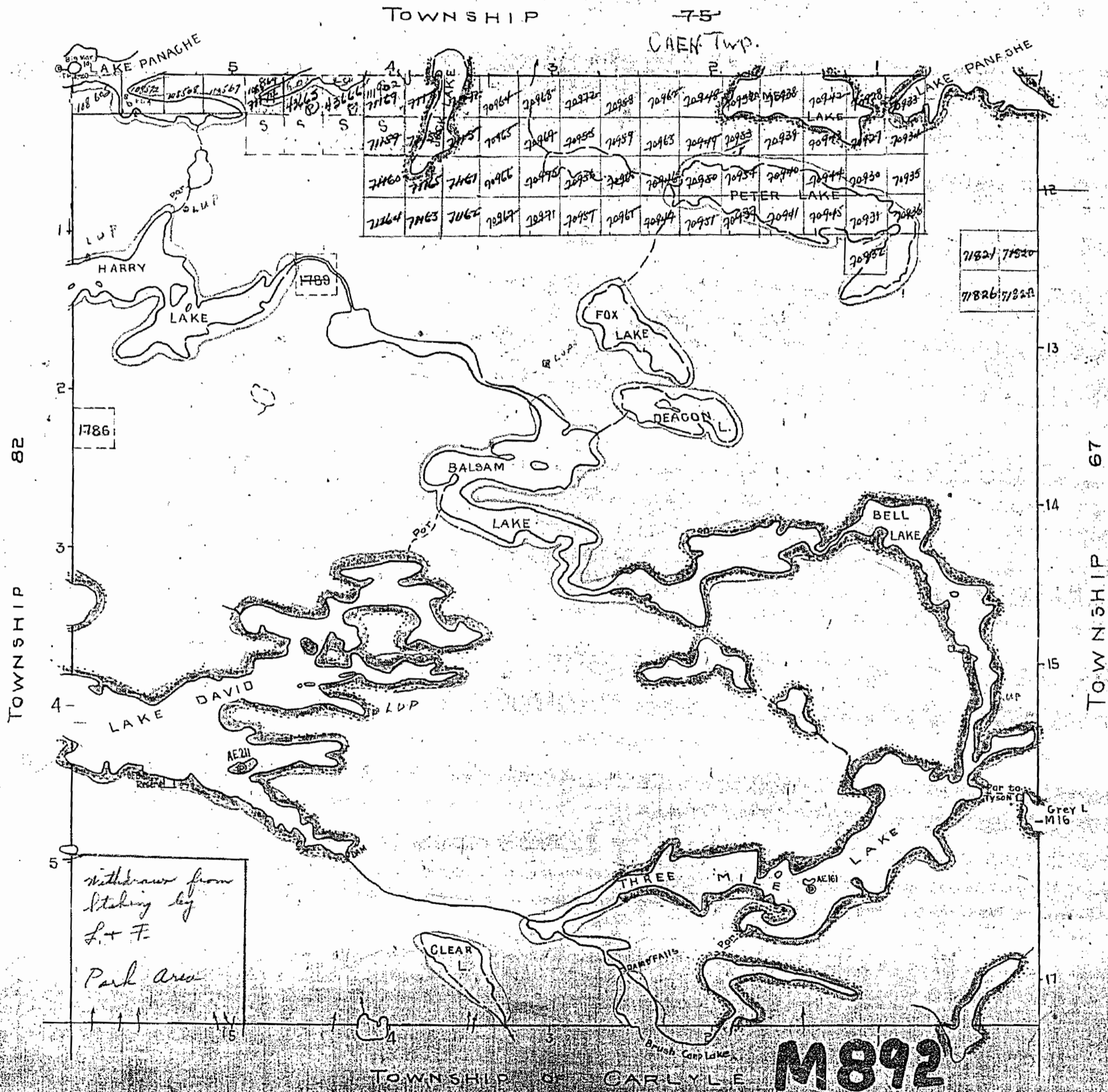
Old

Islands in Panache Lake withdrawn from Staking Nov. 23/26 Act. 39 sub. (c)

DISTRICT OF SUDBURY

Scale 40 Chains = 1 Inch

1/100 Res.



Withdrawn from
Staking by
L. + F.
Park Area

M892

Surface elevations 200' and above are shown in red.

892

GOSCHEN

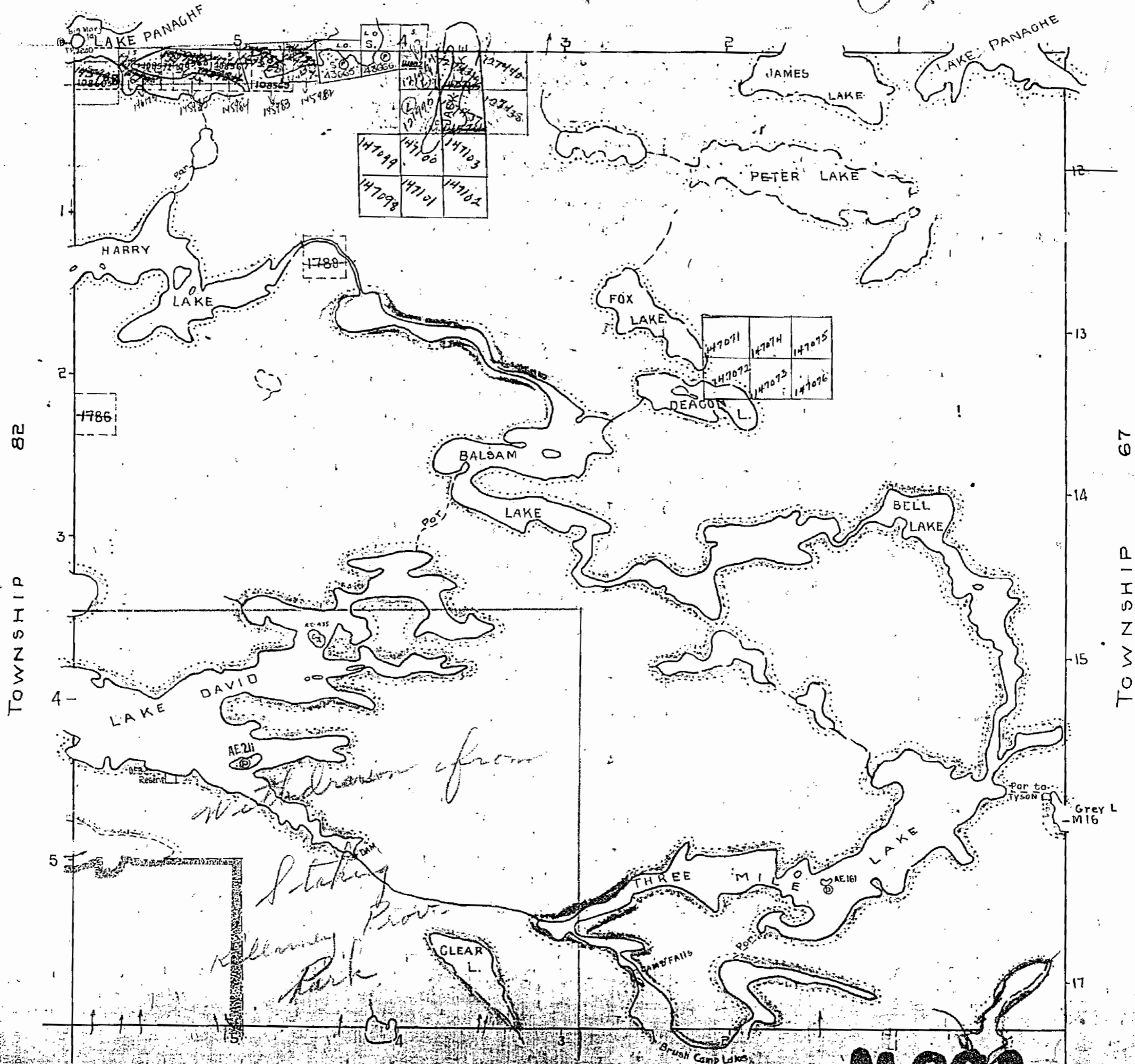
DISTRICT OF SUDBURY

Islands in Lake Passage withdrawn from staking Nov. 23/26 Act. 39 sub. (c)

Scale 40 Chains = 1 Inch

Old

CAEN TWP.



TOWNSHIP 82

TOWNSHIP 67

TOWNSHIP OF CARLYLE

M892

AREA SHOWN THUS WITHDRAWN FROM STAKING RESERVED FOR PARK PURPOSES FILE 163005

Surface reservations and other interests in land of the District of Sudbury

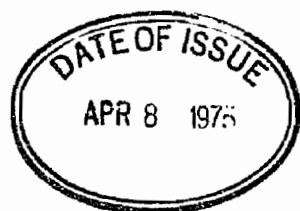
NOTES

400' surface rights reservation along the shores of all lakes and rivers.

All islands in Panache Lake withdrawn from staking November 23 1926

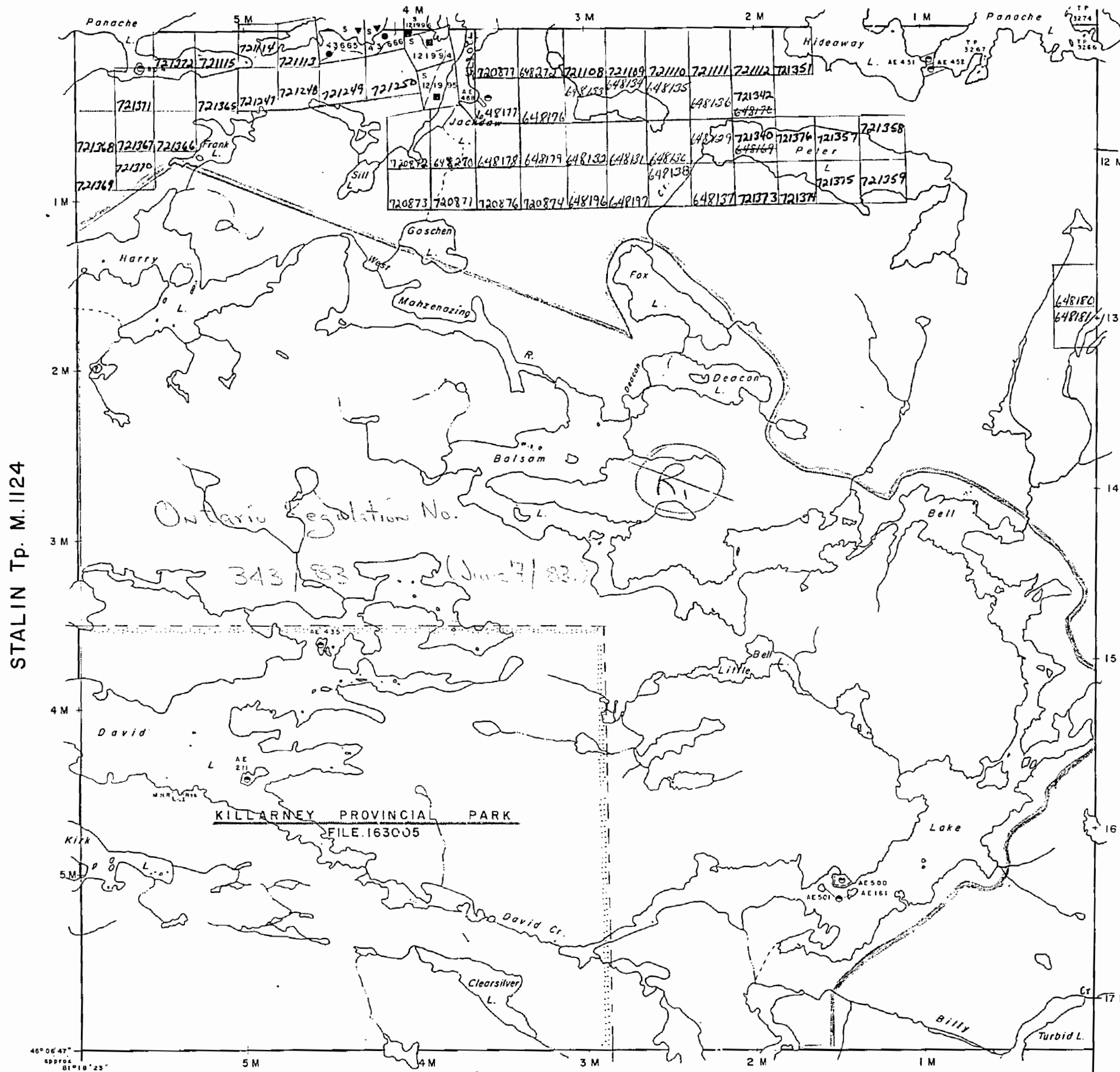
* (R) SR & M.R. WITHDRAWN FROM STAKING W/13/80 see Carlyle Twp. Lind Roll

* Replaced by Ontario Regulation No. 343/83. (June 7/1983)



OFFICE USE ONLY

CAEN Tp. M.696



LEGEND

- HIGHWAY AND ROUTE No.
- OTHER ROADS
- TRAILS
- SURVEYED LINES:
 - TOWNSHIPS, BASE LINES, ETC.
 - LOTS, MINING CLAIMS, PARCELS, ETC.
- UNSURVEYED LINES:
 - LOT LINES
 - PARCEL BOUNDARY
 - MINING CLAIMS ETC.
- RAILWAY AND RIGHT OF WAY
- UTILITY LINES
- NON-PERENNIAL STREAM
- FLOODING OR FLOODING RIGHTS
- SUBDIVISION
- ORIGINAL SHORELINE
- MARSH OR MUSKEG
- MINES

DISPOSITION OF CROWN LANDS

TYPE OF DOCUMENT	SYMBOL
PATENT, SURFACE & MINING RIGHTS	
" SURFACE RIGHTS ONLY	
" MINING RIGHTS ONLY	
LEASE, SURFACE & MINING RIGHTS	
" SURFACE RIGHTS ONLY	
" MINING RIGHTS ONLY	
LICENCE OF OCCUPATION	
CROWN LAND SALE	
ORDER-IN-COUNCIL	
RESERVATION	
CANCELLED	
SAND & GRAVEL	

SCALE: 1 INCH = 40 CHAINS



ACRES	HECTARES
40	16

TOWNSHIP

GOSCHEN

DISTRICT

SUDBURY

MINING DIVISION

SUDBURY

Ministry of Natural Resources

Ontario Surveys and Mapping Branch

Date 1975 Plan No.

Whitney Block Queen's Park, Toronto

M. 892

CARLYLE Tp. M.702