

906

Crockett Twp. - M.740

SUDBURY
MINING DIV.
RECEIVED
JUN 22 1910
A.M. 7, 8, 9, 10, 11, 12, 1, 2, 3, 4, 5, 6 P.

THE TOWNSHIP
OF

HALCROW

DISTRICT OF
SUDBURY

SUDBURY
MINING DIVISION

SCALE: 1-INCH 40 CHAINS

LEGEND

- PATENTED LAND (P)
- CROWN LAND SALE (C.S.)
- LEASES (L)
- LOCATED LAND (Loc.)
- LICENSE OF OCCUPATION (L.O.)
- MINING RIGHTS ONLY (M.R.O.)
- SURFACE RIGHTS ONLY (S.R.O.)
- ROADS
- IMPROVED ROADS
- KING'S HIGHWAYS
- RAILWAYS
- POWER LINES
- MARSH OR MUSKEG
- MINES
- CANCELLED (C)

NOTES

400' Surface Rights Reservation around all lakes and rivers.

Lackner Twp. - M.975

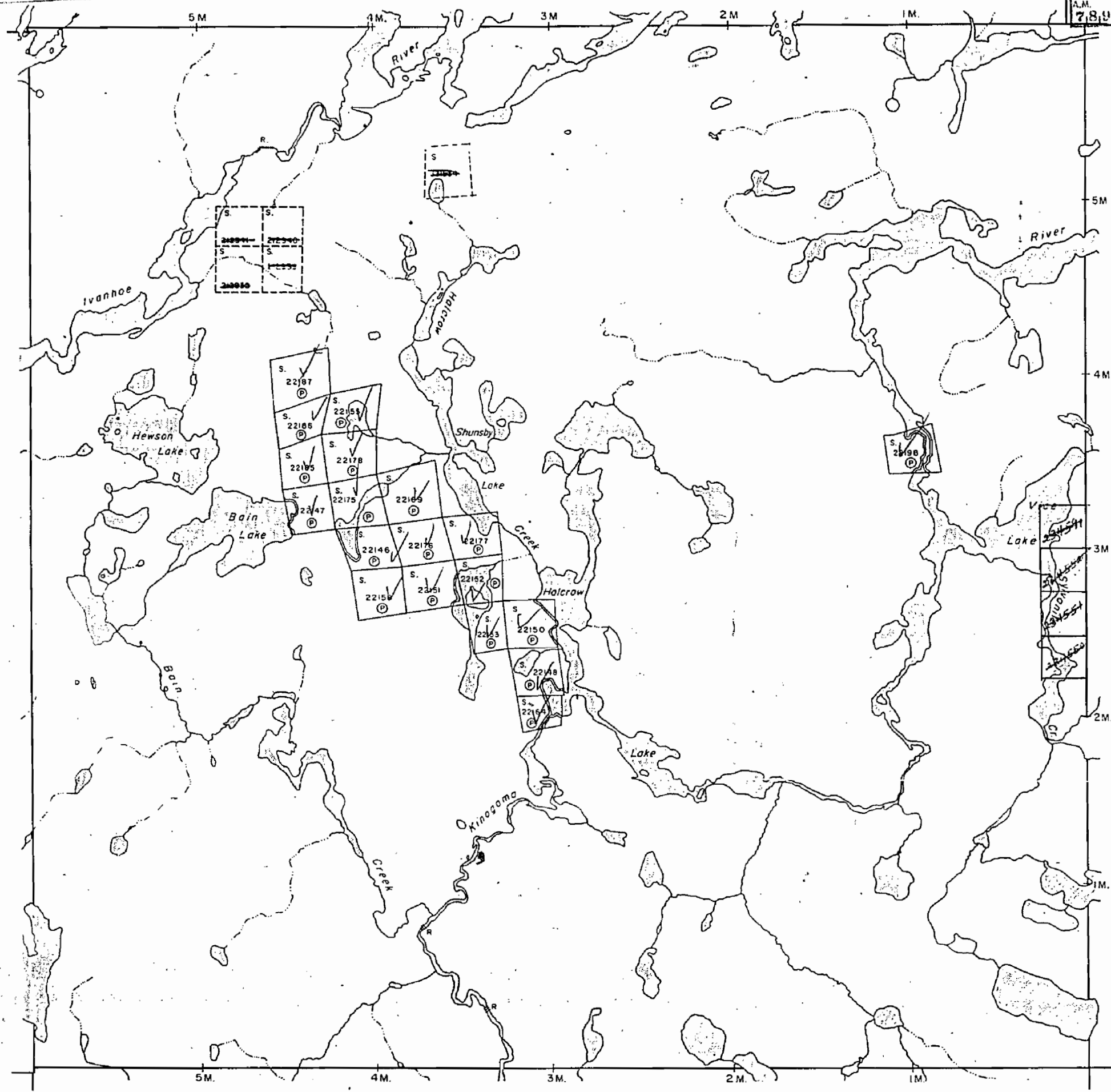
Denyes Twp. - M.758

Tooms Twp. - M.1159

PLAN NO. M.906

DEPARTMENT OF MINES

— ONTARIO —



Crockett Twp. - M.740

THE TOWNSHIP OF
OF
HALCROW

DISTRICT OF
SUDBURY

PORCUPINE
MINING DIVISION

SCALE: 1-INCH 40 CHAINS

LEGEND

- PATENTED LAND (P)
- CROWN LAND SALE (C.S.)
- LEASES (L)
- LOCATED LAND (Loc.)
- LICENSE OF OCCUPATION (L.O.)
- MINING RIGHTS ONLY (M.R.O.)
- SURFACE RIGHTS ONLY (S.R.O.)
- ROADS
- IMPROVED ROADS
- KING'S HIGHWAYS
- RAILWAYS
- POWER LINES
- MARSH OR MUSKEG
- MINES
- CANCELLED

NOTES

400' Surface Rights Reservation around all lakes and rivers.

• L.U.P.

DATE OF ISSUE
JUN 5 1974

PORCUPINE MINING DIVISION
RECEIVED
JUN 7 1974
AM 7 18 9 10 11 12 1 2 3 4 5 6 PM

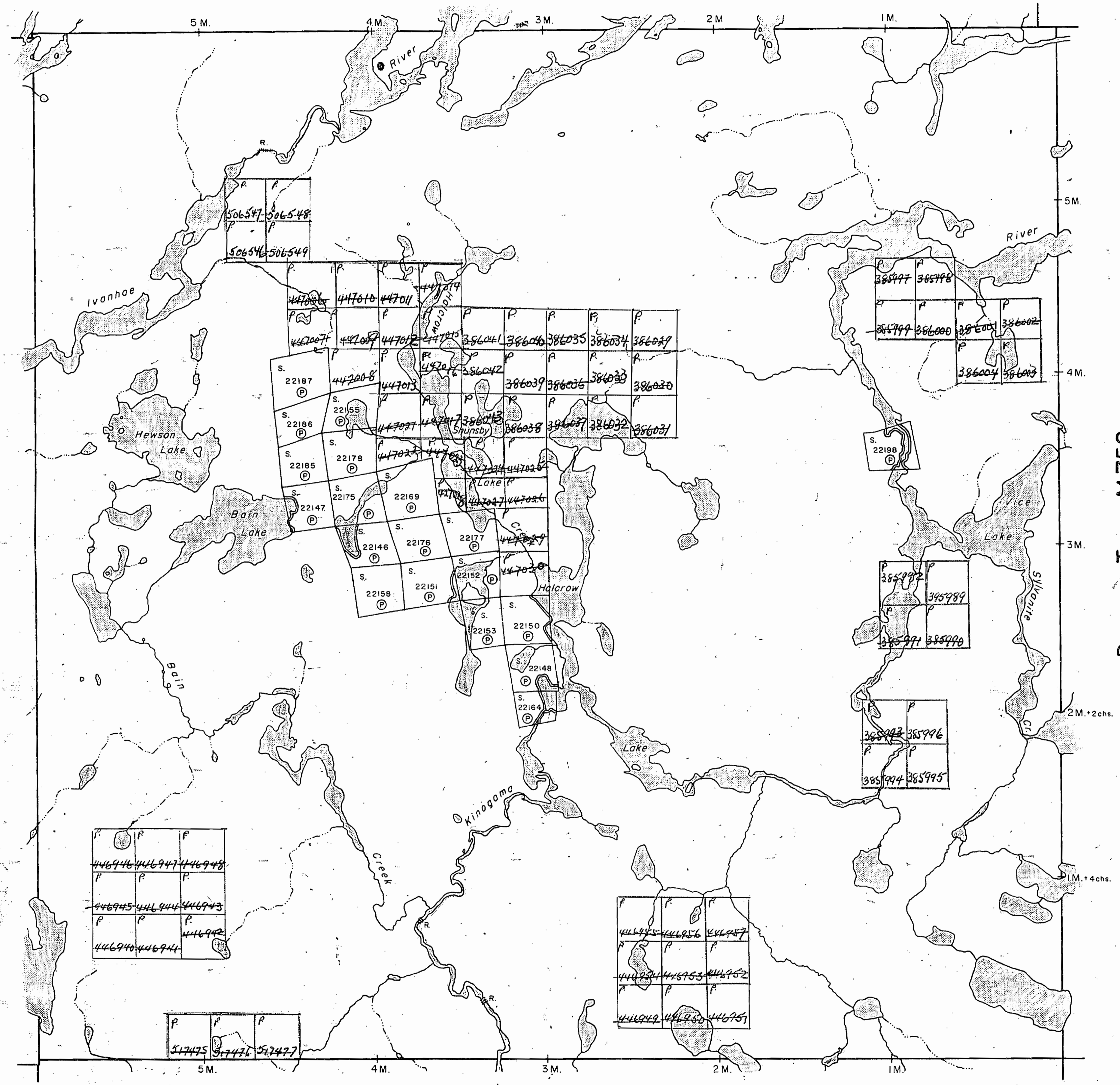
PLAN NO. **M.906**

ONTARIO
MINISTRY OF NATURAL RESOURCES
SURVEYS AND MAPPING BRANCH

Lackner Twp. - M.975

Denyes Twp. - M.758

Tooms Twp. - M.1159



Crockett Twp. - M.740

THE TOWNSHIP OF
OF
HALCROW

DISTRICT OF
SUDBURY

PORCUPINE
MINING DIVISION

SCALE: 1-INCH = 40 CHAINS

LEGEND

PATENTED LAND	Ⓟ
CROWN LAND SALE	C.S.
LEASES	Ⓛ
LOCATED LAND	Loc.
LICENSE OF OCCUPATION	L.O.
MINING RIGHTS ONLY	M.R.O.
SURFACE RIGHTS ONLY	S.R.O.
ROADS	—
IMPROVED ROADS	—
KING'S HIGHWAYS	—
RAILWAYS	—
POWER LINES	—
MARSH OR MUSKEG	—
MINES	Ⓜ
CANCELLED	C.

NOTES

400' Surface Rights Reservation around
all lakes and rivers.

OUT OF SERVICE OCT. 19, 1989

Received May 8/80

PLAN NO. **M.906**

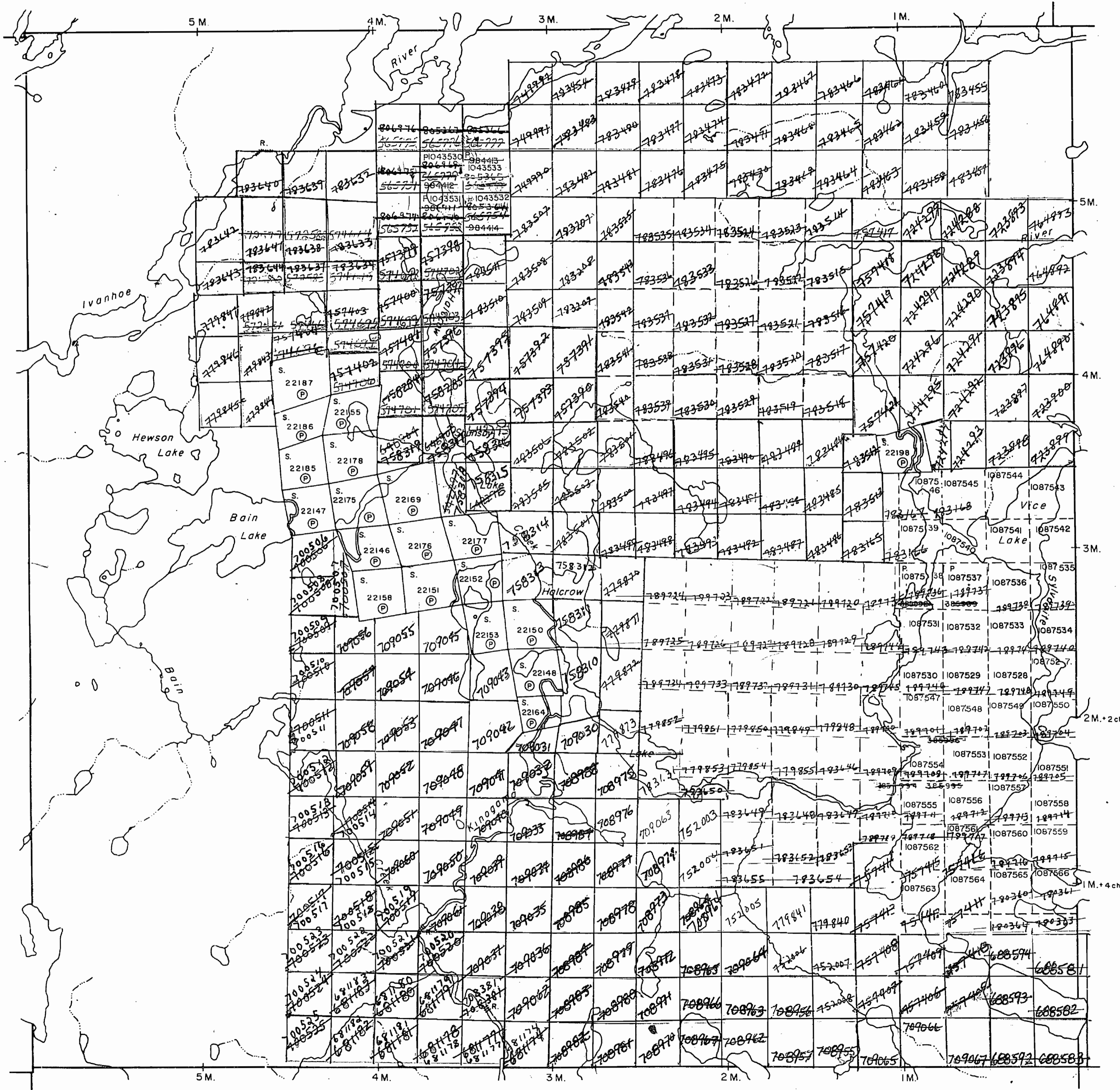
ONTARIO
MINISTRY OF NATURAL RESOURCES
SURVEYS AND MAPPING BRANCH

Lackner Twp. - M.975

Denyes Twp. - M.758

Tooms Twp. - M.1159

MAGNETIC
DECLINATION
9° WEST



Crockett Twp. - M.740

THE TOWNSHIP OF
OF
HALCROW

DISTRICT OF
SUDBURY

SUDBURY
MINING DIVISION

SCALE: 1-INCH = 40 CHAINS

LEGEND

- PATENTED LAND Ⓟ
- CROWN LAND SALE C.S.
- LEASES Ⓛ
- LOCATED LAND Loc.
- LICENSE OF OCCUPATION L.O.
- MINING RIGHTS ONLY M.R.O.
- SURFACE RIGHTS ONLY S.R.O.
- ROADS — — — — —
- IMPROVED ROADS — — — — —
- KING'S HIGHWAYS — — — — —
- RAILWAYS — — — — —
- POWER LINES — — — — —
- MARSH OR MUSKEG — — — — —
- MINES Ⓜ
- CANCELLED C.
- ⊕ REMOTE TOURIST CAMPS

NOTES

400' Surface Rights Reservation around
all lakes and rivers.

THE INFORMATION THAT
APPEARS ON THIS MAP
HAS BEEN COMPILED
FROM VARIOUS SOURCES,
AND ACCURACY IS NOT
GUARANTEED. THOSE
WISHING TO STAKE MIN-
ING CLAIMS SHOULD CON-
SULT WITH THE MINING
RECORDER, MINISTRY OF
NORTHERN DEVELOP-
MENT AND MINES, FOR AD-
DITIONAL INFORMATION
ON THE STATUS OF THE
LANDS SHOWN HEREON.

MAP REPLACED JULY 14, 1992
BY D.C.

IN SERVICE EFFECTIVE OCT. 19 1989 CHECKED BY D. CHOLETTE

PLAN NO. **M.906**

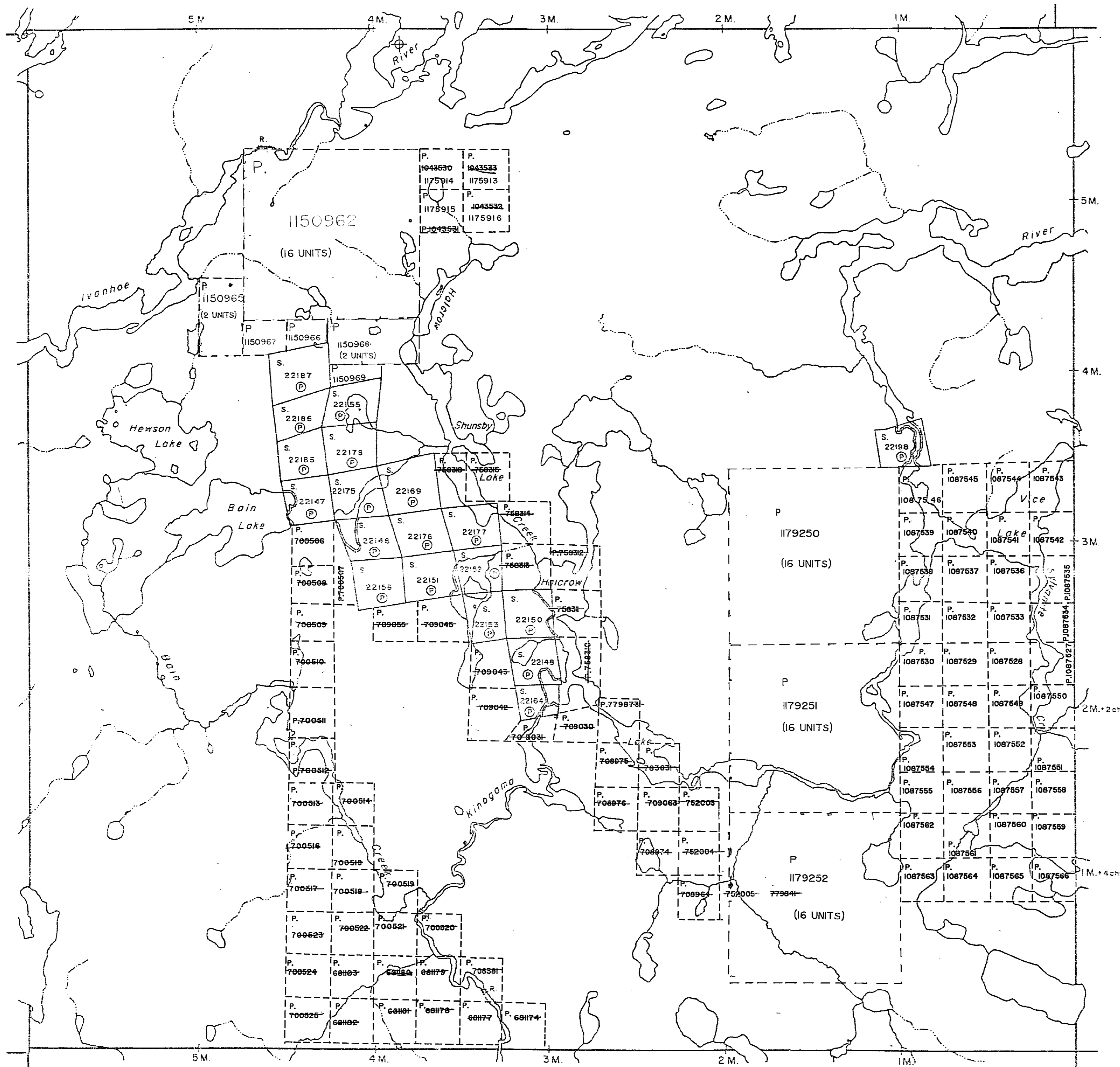
DEPARTMENT OF MINES

— ONTARIO —

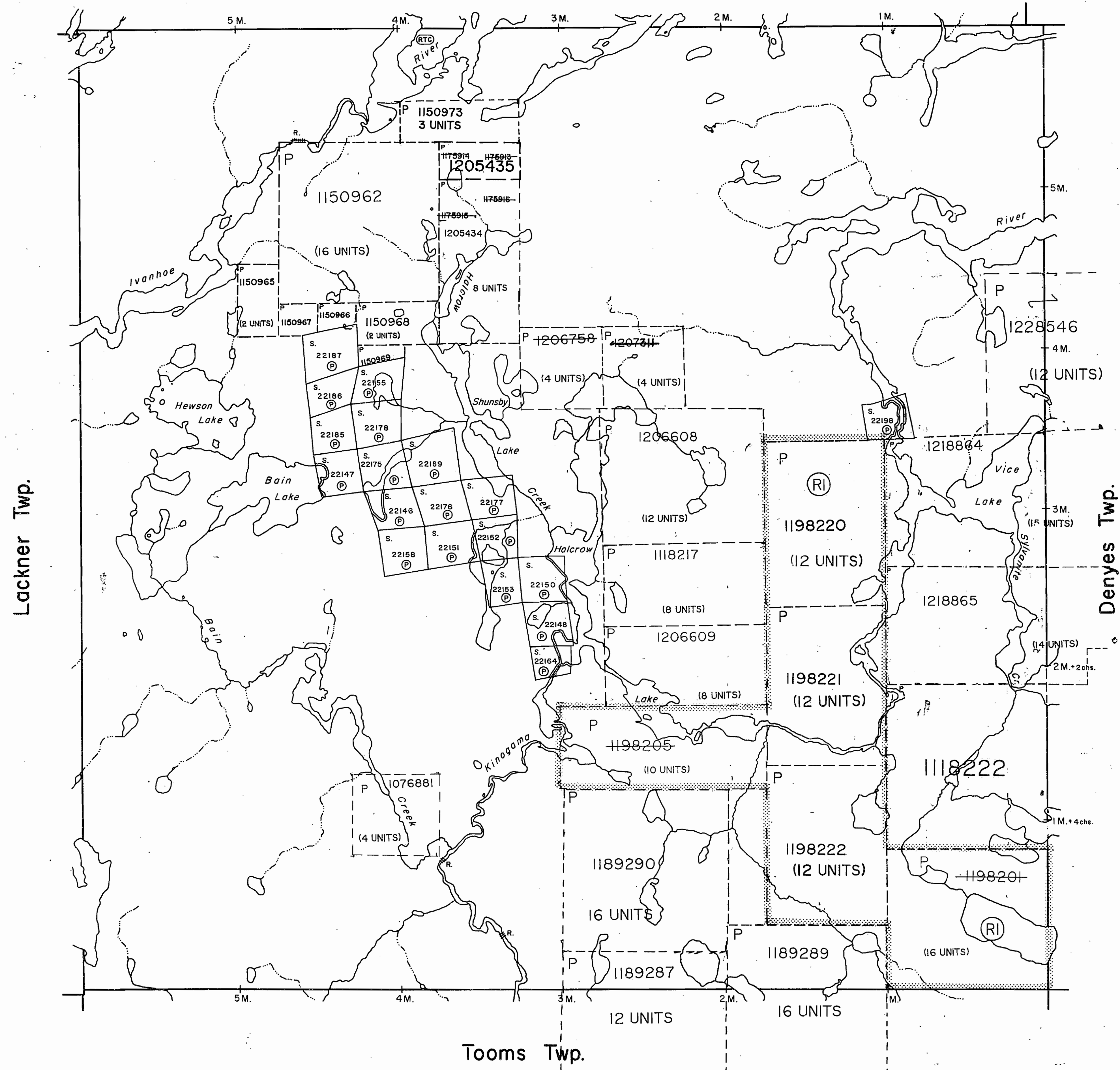
Lackner Twp. - M.975

Denyes Twp. - M.758

Tooms Twp. - M.1159



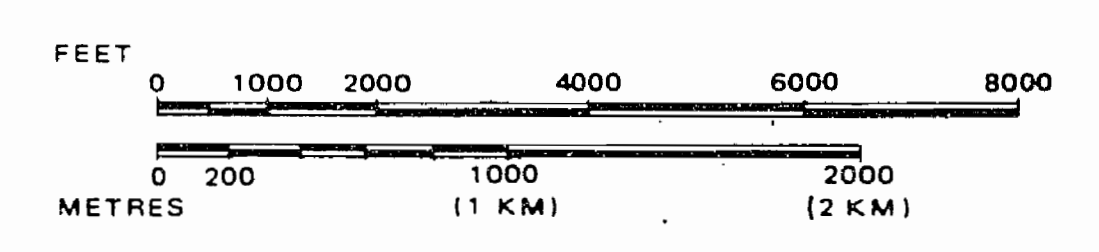
Crockett Twp.



LEGEND

- PATENTED LAND (P)
- CROWN LAND SALE (C.S.)
- LEASES (L)
- LOCATED LAND (Loc.)
- LICENSE OF OCCUPATION (L.O.)
- MINING RIGHTS ONLY (M.R.O.)
- SURFACE RIGHTS ONLY (S.R.O.)
- ROADS
- IMPROVED ROADS
- KING'S HIGHWAYS
- RAILWAYS
- POWER LINES
- MARSH OR MUSKEG
- MINES
- CANCELLED
- (RTC) REMOTE TOURIST CAMP

SCALE: 1 INCH = 40 CHAINS



TOWNSHIP

HALCROW

M.N.R. ADMINISTRATIVE DISTRICT

CHAPLEAU

MINING DIVISION

PORCUPINE

LAND TITLES / REGISTRY DIVISION

SUDBURY

DATE OF ISSUE

MAY 13 1992

PROVINCIAL RECORDING OFFICE - SUDBURY



Ministry of Natural Resources Ontario

Ministry of Northern Development and Mines

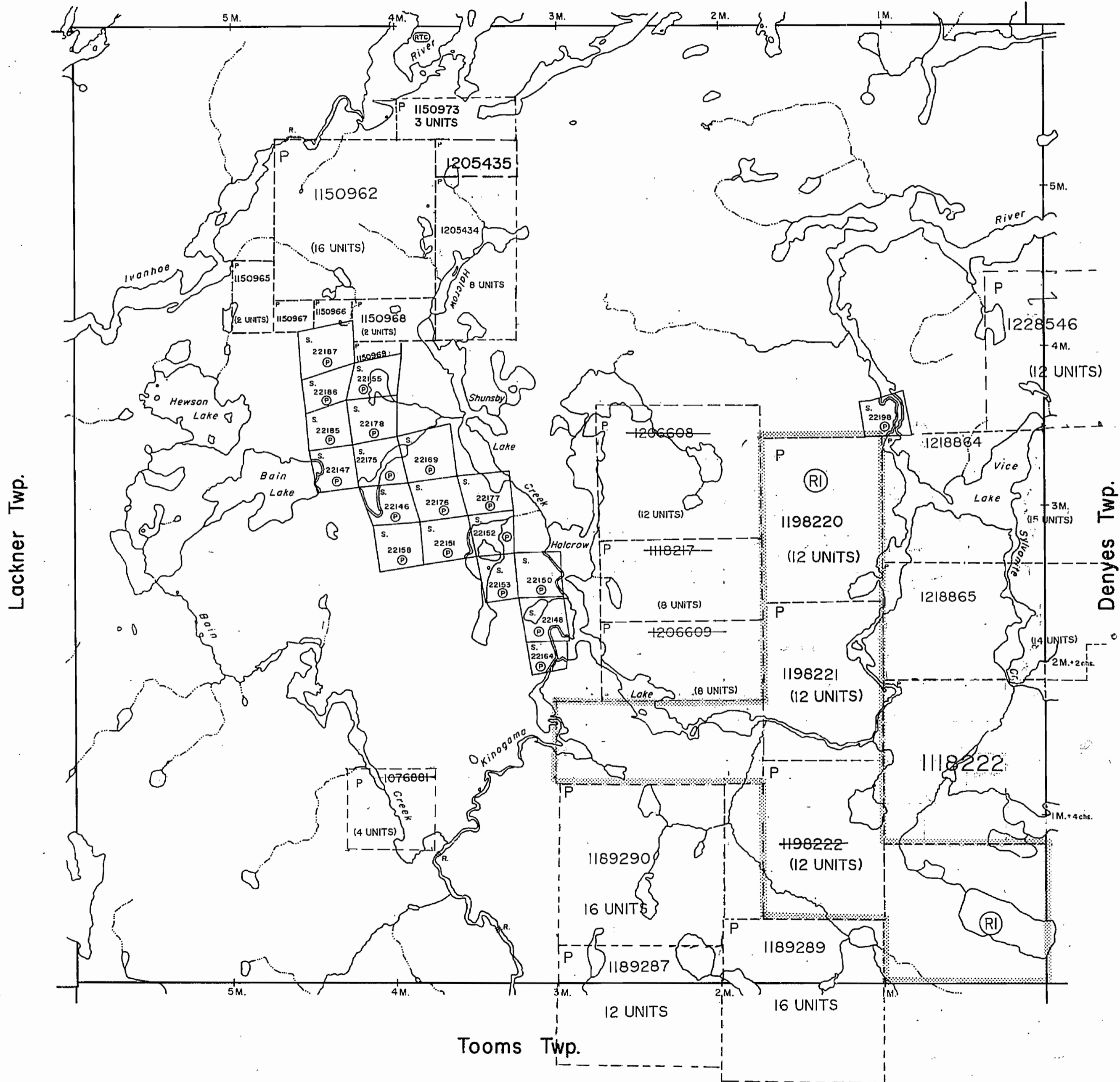
Date MAY, 1992

Number

ACTIVATED JULY 14, 1992 BY D.C. CHECKED BY G.W.

G-1135

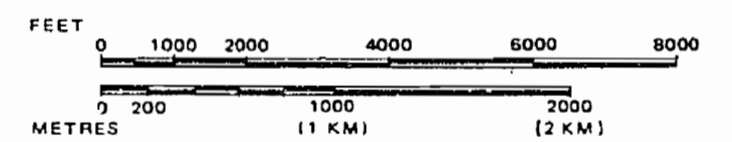
Crockett Twp.




LEGEND

- PATENTED LAND (P)
- CROWN LAND SALE (C.S.)
- LEASES (L)
- LOCATED LAND (Loc.)
- LICENSE OF OCCUPATION (L.O.)
- MINING RIGHTS ONLY (M.R.O.)
- SURFACE RIGHTS ONLY (S.R.O.)
- ROADS (—)
- IMPROVED ROADS (—)
- KING'S HIGHWAYS (—)
- RAILWAYS (—)
- POWER LINES (—)
- MARSH OR MUSKEG (—)
- MINES (—)
- CANCELLED (—)
- (RT) REMOTE TOURIST CAMP

SCALE: 1 INCH = 40 CHAINS



TOWNSHIP
HALCROW
 M.N.R. ADMINISTRATIVE DISTRICT
 CHAPLEAU
 MINING DIVISION
 PORCUPINE
 LAND TITLES / REGISTRY DIVISION
 SUDBURY


 Ministry of Natural Resources
 Ministry of Northern Development and Mines

Date MAY, 1992

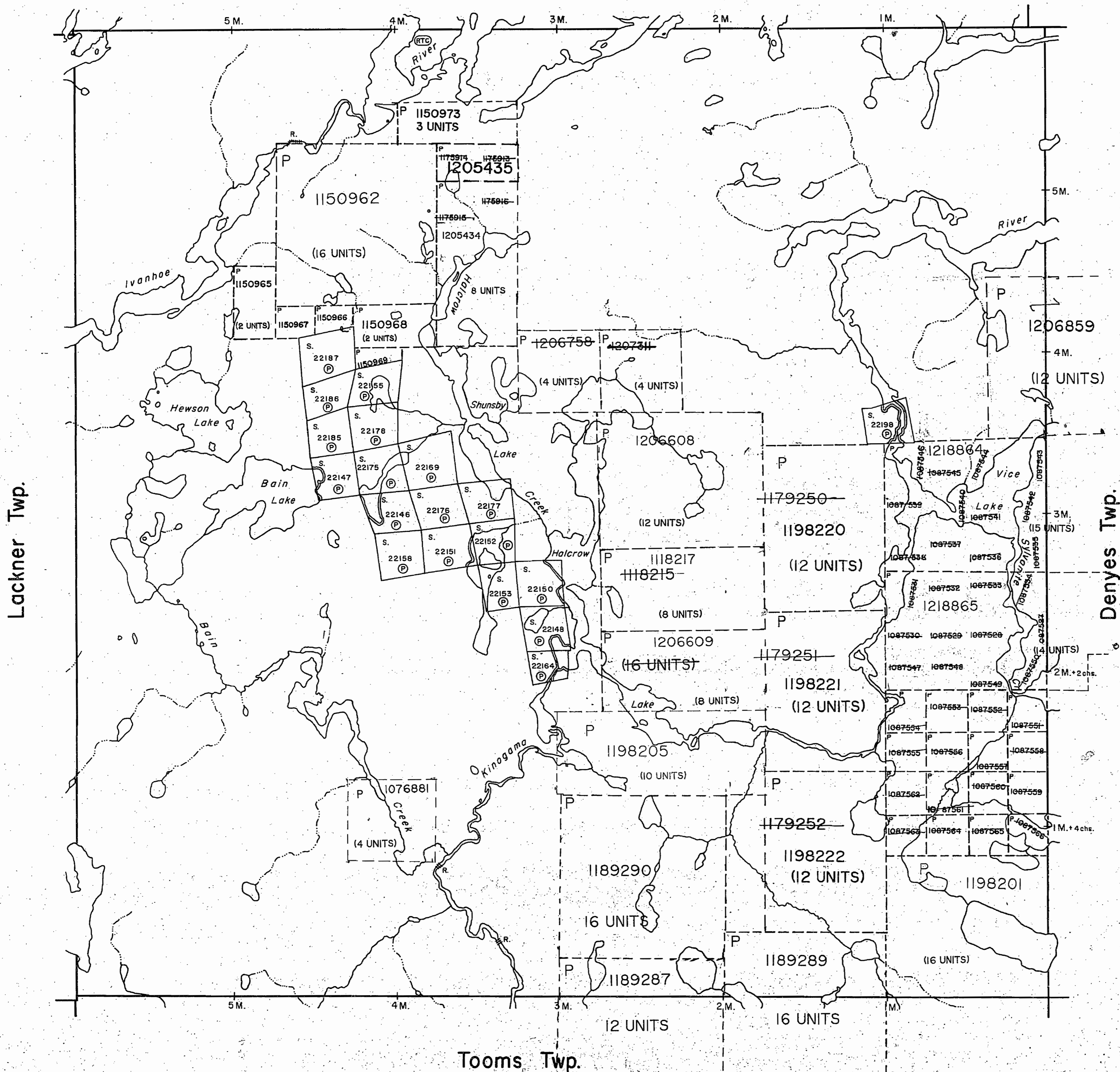
Number

ACTIVATED JULY 14, 1992 BY D.C.

CHECKED BY G.W.

G-1135

Crockett Twp.



Lackner Twp.

Denyes Twp.

Tooms Twp.

DATE OF ISSUE

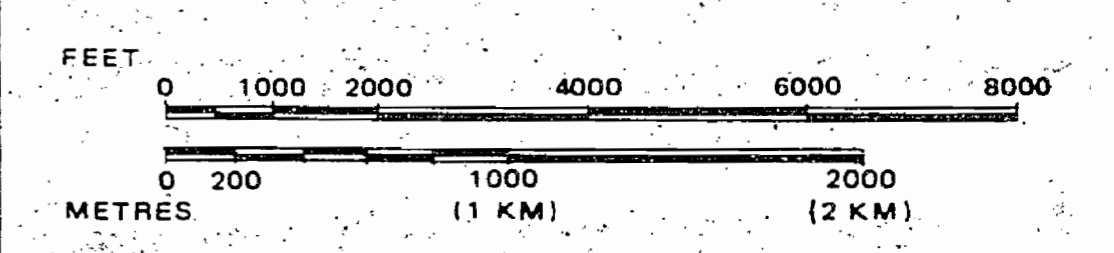
OCT 23 1997

PROVINCIAL RECORDING
OFFICE - SUDBURY

LEGEND

- PATENTED LAND (P)
- CROWN LAND SALE (C.S.)
- LEASES (L)
- LOCATED LAND (Loc.)
- LICENSE OF OCCUPATION (L.O.)
- MINING RIGHTS ONLY (M.R.O.)
- SURFACE RIGHTS ONLY (S.R.O.)
- ROADS:
 - IMPROVED ROADS (—)
 - KING'S HIGHWAYS (—)
- RAILWAYS (—)
- POWER LINES (—)
- MARSH OR MUSKEG (—)
- MINES (X)
- CANCELLED (C)
- (RTC) REMOTE TOURIST CAMP

SCALE: 1 INCH = 40 CHAINS



TOWNSHIP
HALCROW
M.N.R. ADMINISTRATIVE DISTRICT
CHAPLEAU
MINING DIVISION
PORCUPINE
LAND TITLES / REGISTRY DIVISION
SUDBURY

Ministry of Natural Resources Ontario
Ministry of Northern Development and Mines

Date - MAY, 1992
Number
G-1135
ACTIVATED JULY 14, 1992 BY D.C.
CHECKED BY G.W.

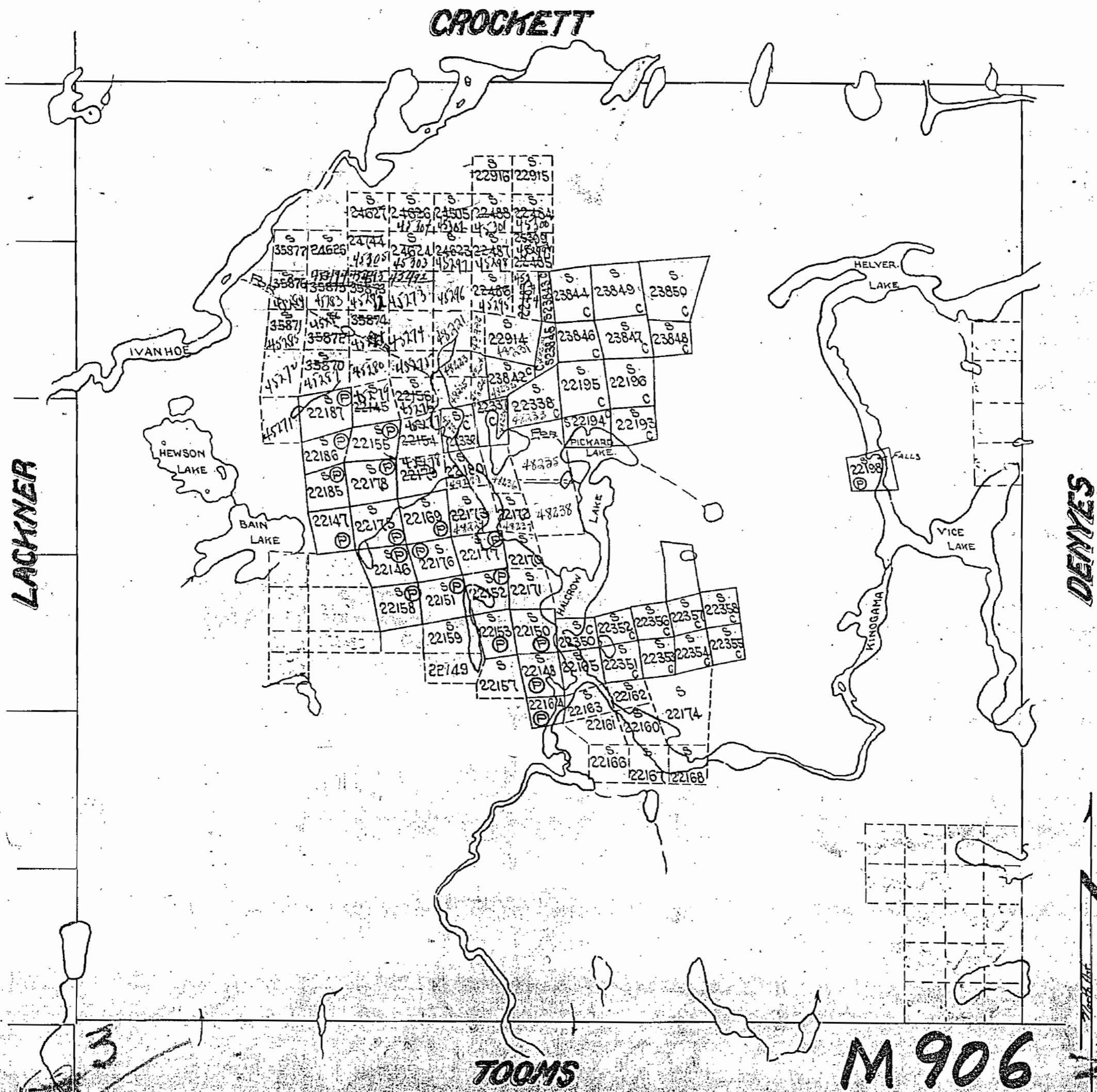
14T
1AP.
ED
ES,
IOT
SE
MIN-
ON-
NG
OF
JP-
AD-
ON
THE
N.

3

HALCROW

DISTRICT OF SUDBURY

Scale - 40 Chains = 1 inch.



N. Bdy run by OLS. A.C. Young 1920
 E. H.J. Beatty 1906
 W. A.C. Young 1920
 S.
 Lakes & Rivers from Micrometer Survey by H.C. Rickaby

M 906

DATE OF ISSUE
 NOV. 20 1941

906

Crockett Twp. - M.740

SUDBURY
MINING DIV.
RECEIVED
JUN 22 1970
A.M. P.
7 8 9 10 11 12 1 2 3 4 5 6

THE TOWNSHIP
OF

HALCROW

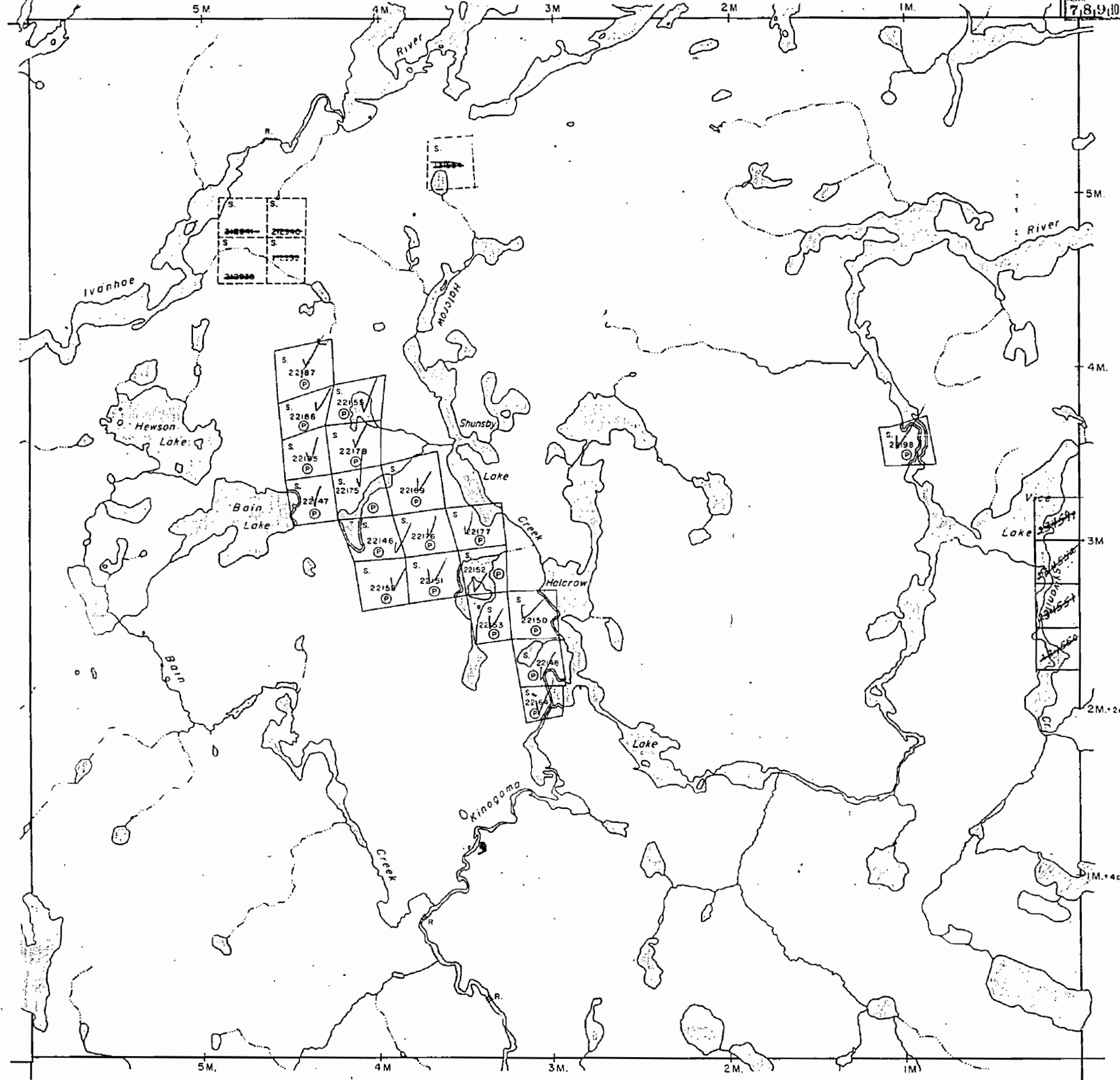
DISTRICT OF
SUDBURY

SUDBURY
MINING DIVISION

SCALE: 1-INCH 40 CHAINS

Lackner Twp. - M.975

Denyes Twp. - M.758



LEGEND

PATENTED LAND	(P)
CROWN LAND SALE	C.S.
LEASES	(L)
LOCATED LAND	Loc.
LICENSE OF OCCUPATION	L.O.
MINING RIGHTS ONLY	M.R.O.
SURFACE RIGHTS ONLY	S.R.O.
ROADS	—
IMPROVED ROADS	—
KING'S HIGHWAYS	—
RAILWAYS	—
POWER LINES	—
MARSH OR MUSKEG	—
MINES	X
CANCELLED	C.

NOTES

400' Surface Rights Reservation around all lakes and rivers.

Tooms Twp. - M.1159

PLAN NO. M.906

DEPARTMENT OF MINES

— ONTARIO —

906

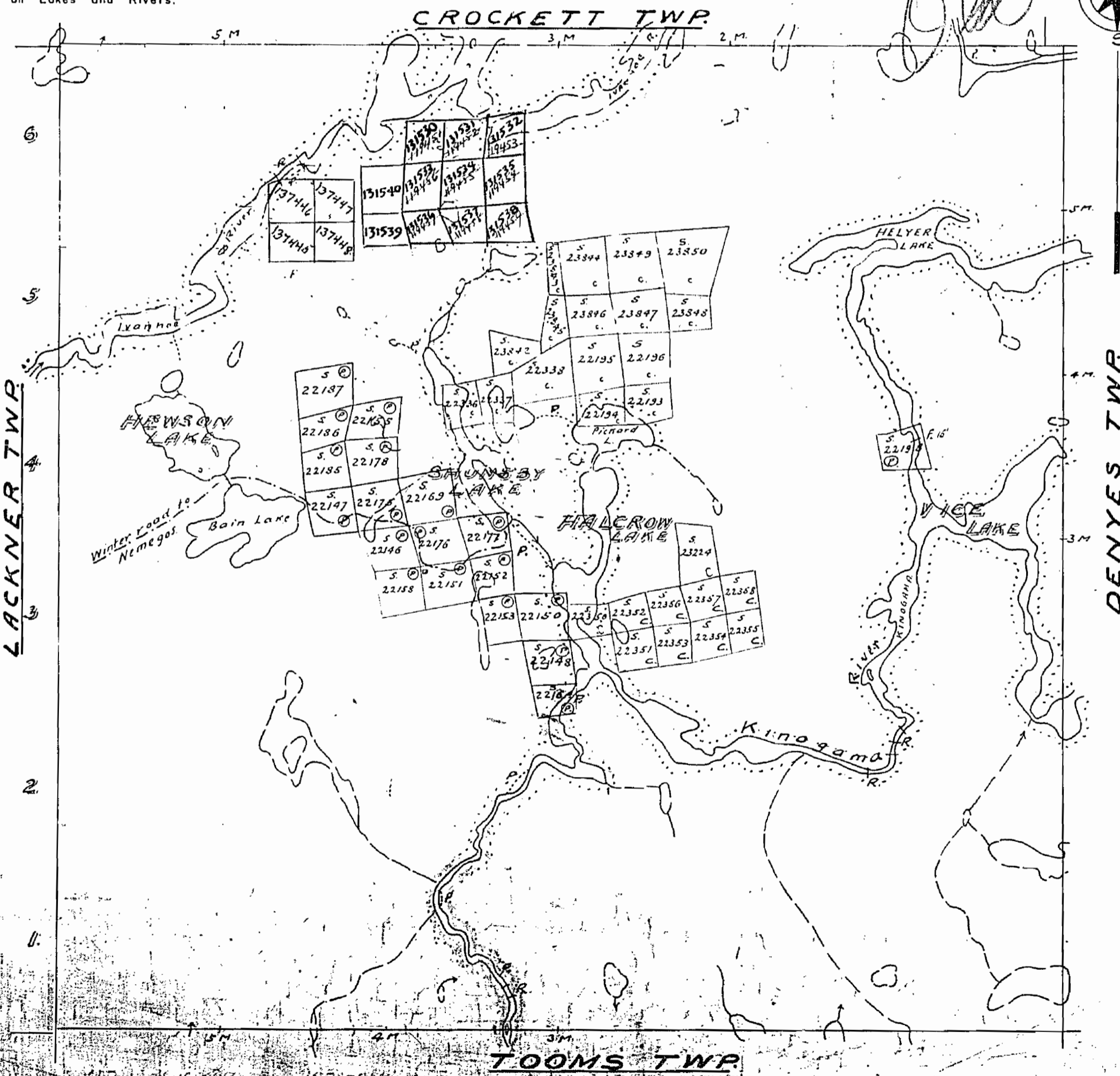
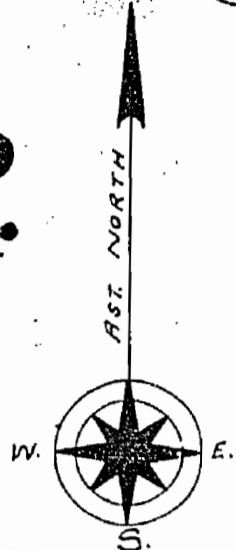
711-906

PLAN OF
HALCROW TWP.
 SUDBURY MINING DIVISION.
 DISTRICT OF SUDBURY

NOTE

400' Surface Rights Reservation
around all Lakes and Rivers.

Scale, 40 chains to an inch.



LACKNER TWP

DENYES TWP

TOOMS TWP

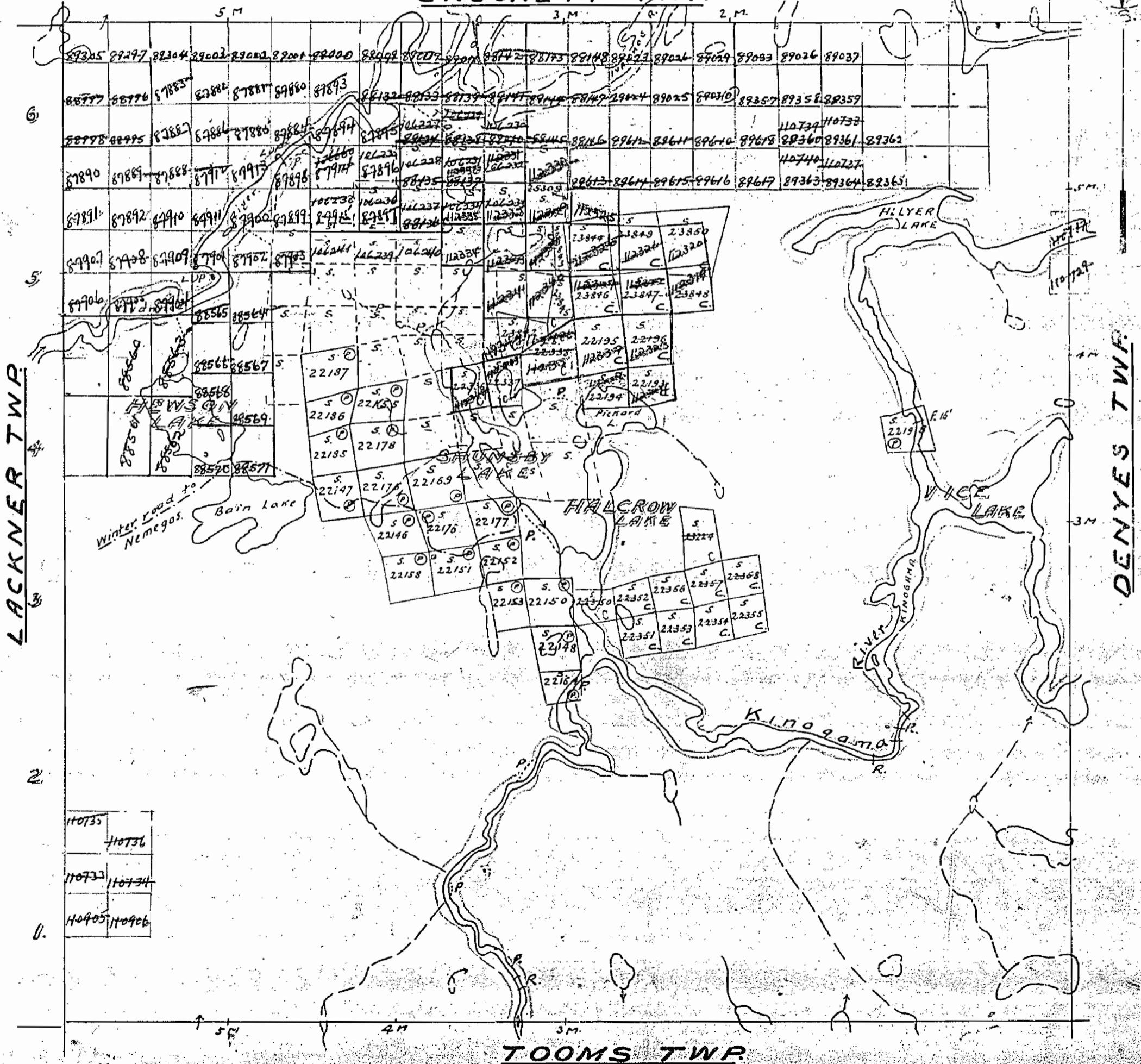
HALCROW TWP

PLAN OF
HALCROW TWP
 SUDBURY MINING DIVISION.
 DISTRICT OF SUDBURY.

Scale, 40 chains to an inch.

CROCKETT TWP.

Old
 M-906

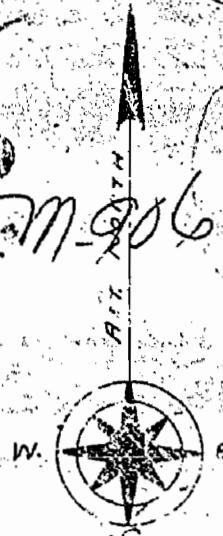


110735	110736
110733	110734
110405	110406

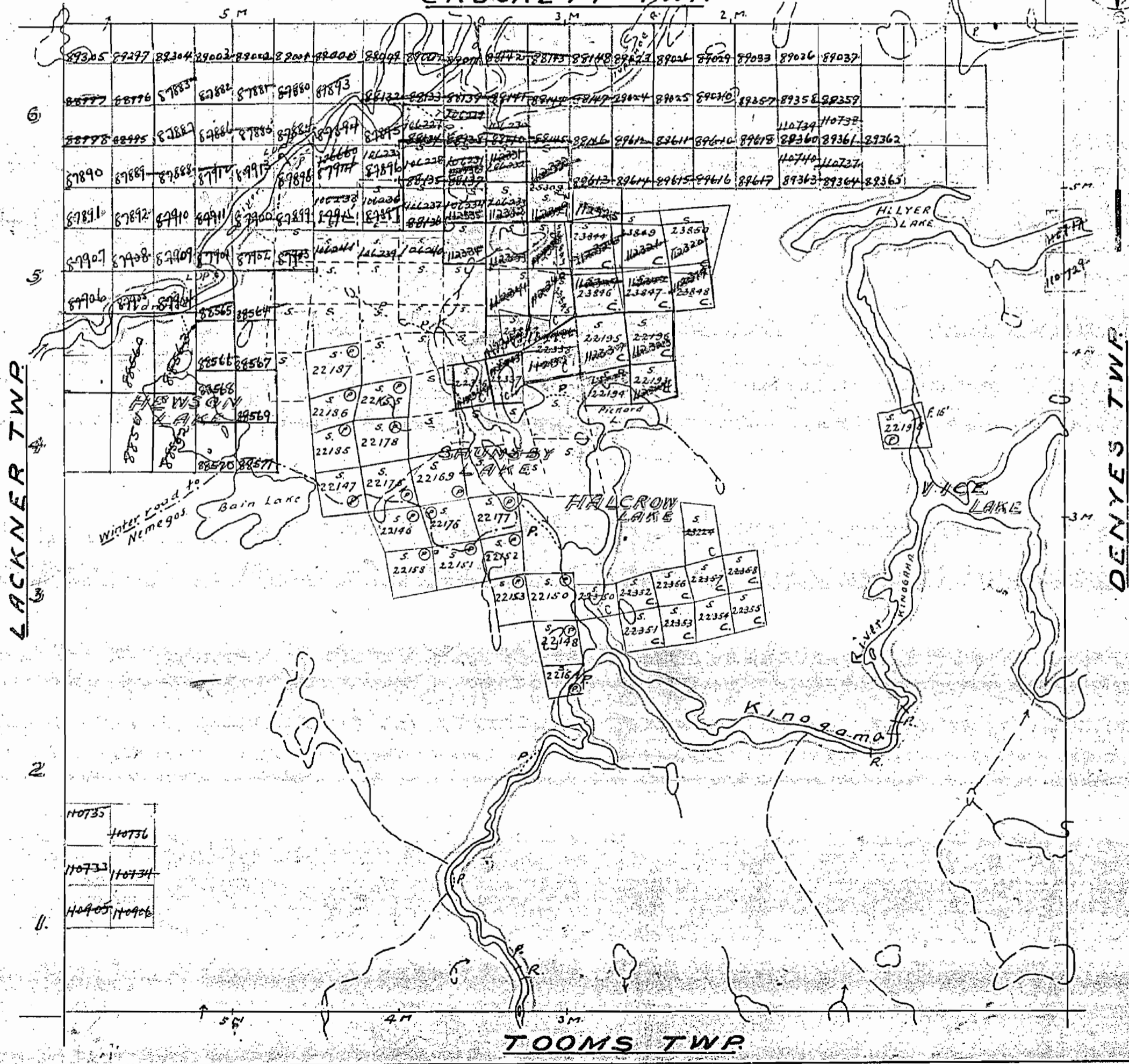
PLAN OF
HALCROW TWP
 SUDBURY MINING DIVISION
 DISTRICT OF SUDBURY.

Old
M. 906

Scale, 40 chains to an inch.



CROCKETT TWP.



LACKNER TWP

DENYES TWP

TOOMS TWP

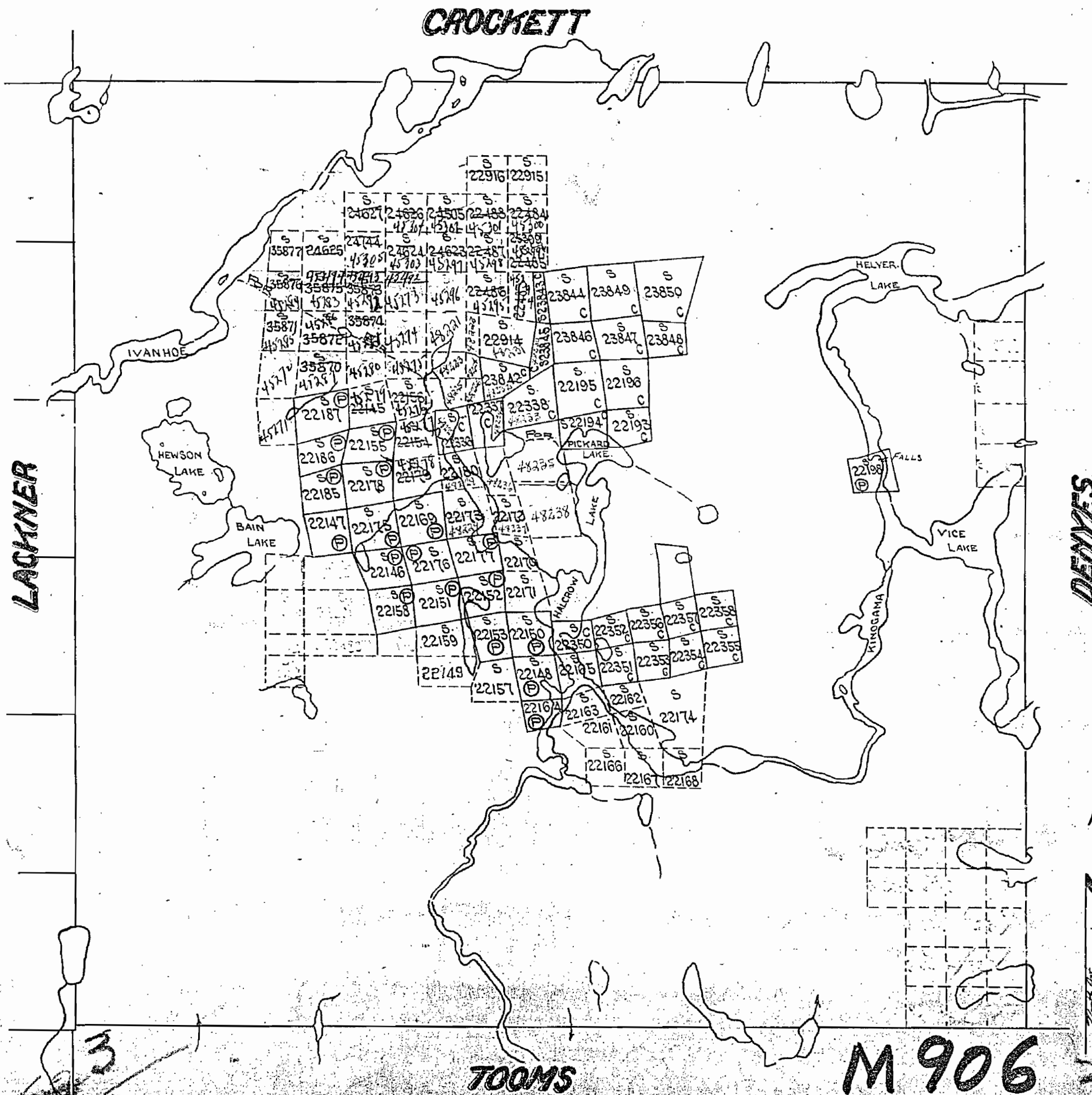
110735	110736
110733	110734
110705	110706

3

HALCROW

DISTRICT OF SUDBURY

Scale - 40 Chains - 1 inch.



N. Bdy run by O.L.S. A.C. Young 1920
 E. H.J. Beatty 1906
 W. A.C. Young 1920
 S.
 Lakes & Rivers from Micrometer Survey by H.C. Rickaby

DATE OF ISSUE
 NOV 26 1941

M 906

3

3

3