

# HALIFAX TWP. FORMERLY TOWNSHIP 60

DISTRICT OF SUDBURY.  
SUDBURY MINING DIVISION.

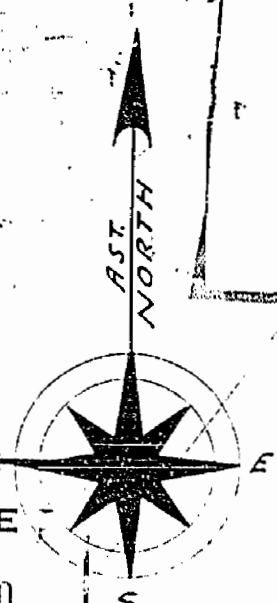
Scale: 40 chains to an inch.

**NOTE**

400' Surface Rights Reservation  
around all Lakes and Rivers.

TILTON TWP.

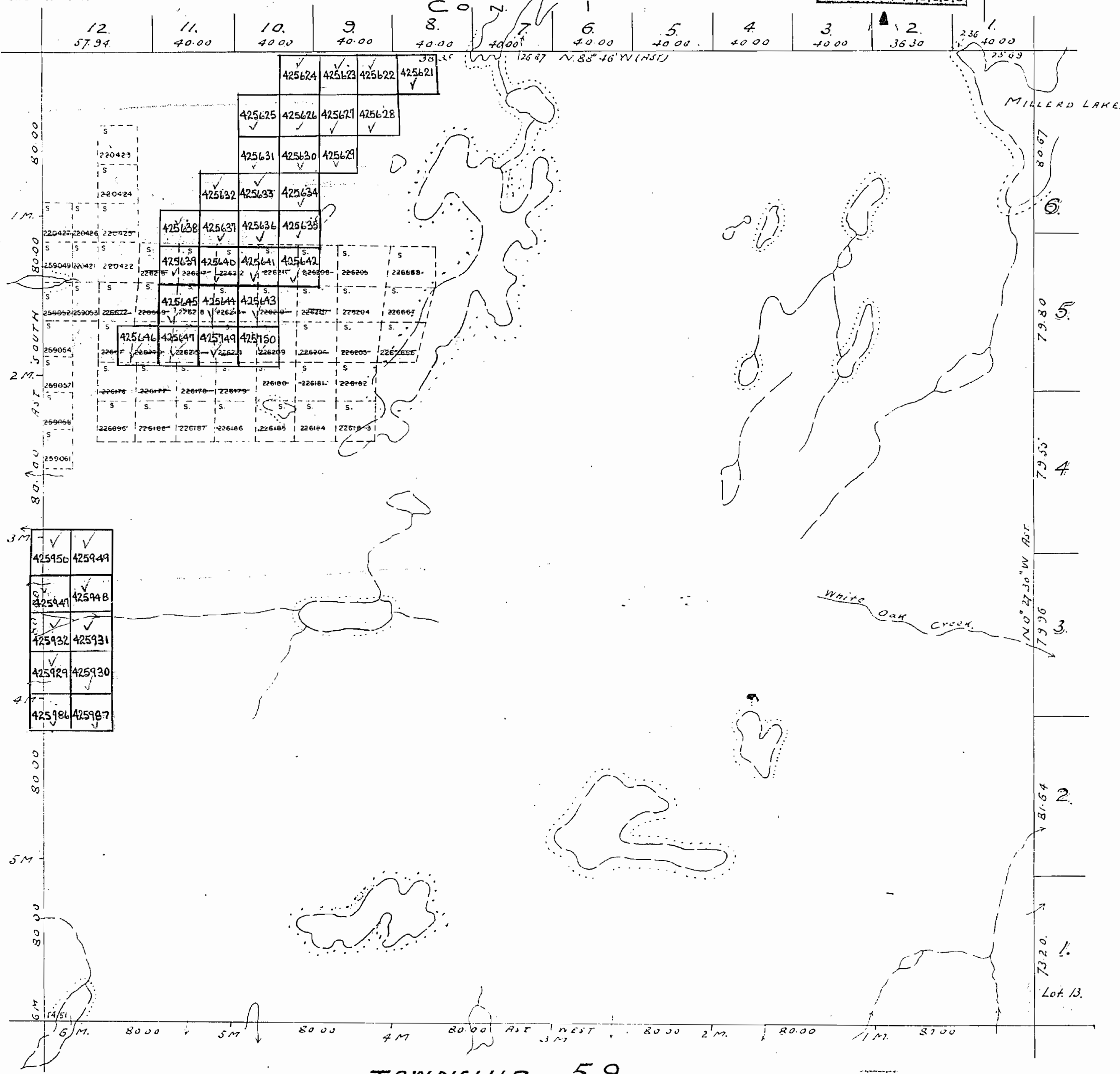
SUDBURY  
MINING DIV.  
RECEIVED  
JUN 24 1930  
A.M. P.M.  
7 8 9 10 11 12 1 2 3 4 5 6



907

TOWNSHIP 68.

LAURA TWP.



N. Bdy. by O. L. S. J. W. Fitzgerald 1898.  
S. " " P. L. S. Wm. Ball 1873-4.  
E. " " O. L. S. W. W. Stull 1905.  
W. " " P. L. S. Wm. Ball 1873-4.

Parcels marked R are Patented  
L Leased  
LO under Lic. of Occ.  
Authentic only from Jan'y. 1932.

Dept. of Surveys  
Parliament Buildings  
Toronto Ontario Canada.

Dec 3rd 1930. **M907**

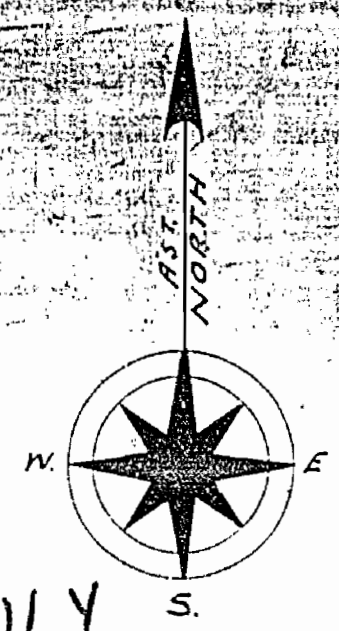
HALIFAX

# HALIFAX TWP. FORMERLY TOWNSHIP 60

M.907

ONTARIO  
MINISTRY OF NATURAL RESOURCES  
SURVEYS AND MAPPING BRANCH

**DISTRICT OF SUDBURY.**  
**SUDBURY MINING DIVISION.**



DATE OF ISSUE  
AUG 3 - 1976

Scale: 40 chains to an inch.

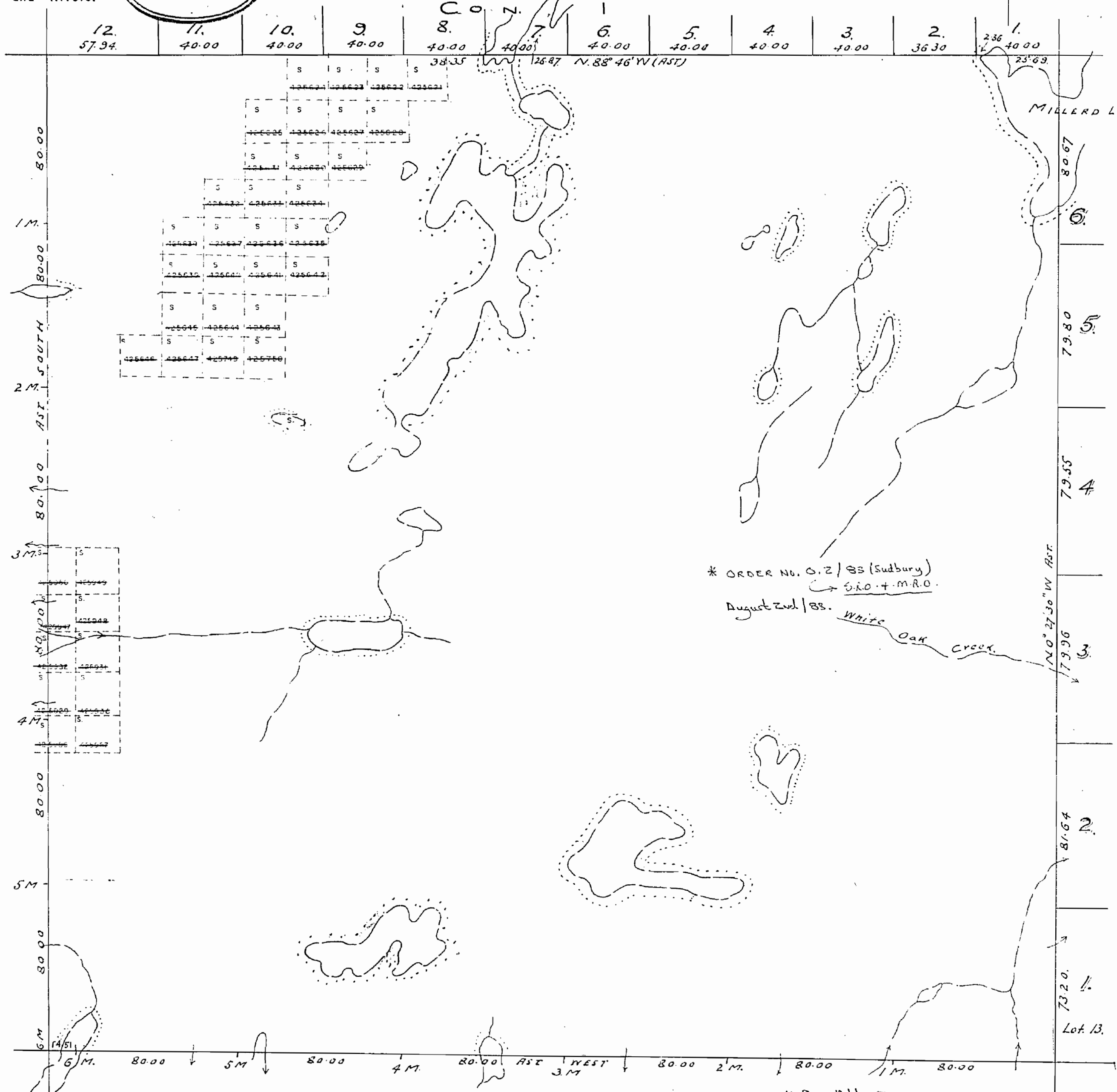
**NOTE**

400' Surface Rights Reservation  
around all Lakes and Rivers.

**TILTON TWP. OFFICE USE ONLY**

TOWNSHIP 68.

LAURA TWP.



\* ORDER NO. O. 2 / 83 (Sudbury)  
S.R.O. + M.R.O.  
August 2nd / 83.

\* See Atlee Twp. Land Roll file.

N. Bdy. by O. L. S. J. W. Fitzgerald 1898.  
S. P. L. S. Wm Ball 1873-4.  
E. O. L. S. Wm Still 1905.  
W. P. L. S. Wm Ball 1873-4.

Parcels marked P are Patented  
L Leased  
L.O. under Lic. of Occ.  
Authentic only from Jan. 1932.

**TOWNSHIP 59.**

Dept. of Surveys  
Parliament Buildings  
Toronto Ontario Canada.  
Dec 3rd 1930.

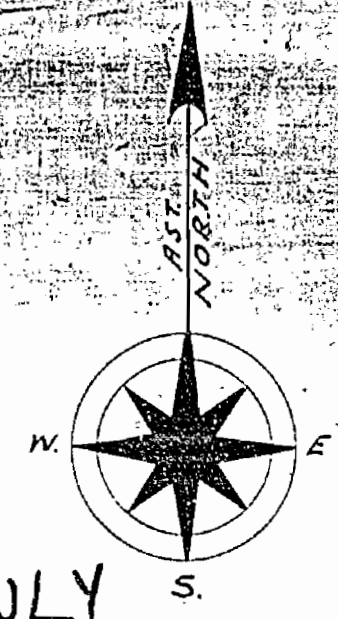
HALIFAX

# HALIFAX TWP. FORMERLY TOWNSHIP 60

M.907

ONTARIO  
MINISTRY OF NATURAL RESOURCES  
SURVEYS AND MAPPING BRANCH

DISTRICT OF SUDBURY  
SUDBURY MINING DIVISION.



DATE OF ISSUE  
AUG 3 - 1976

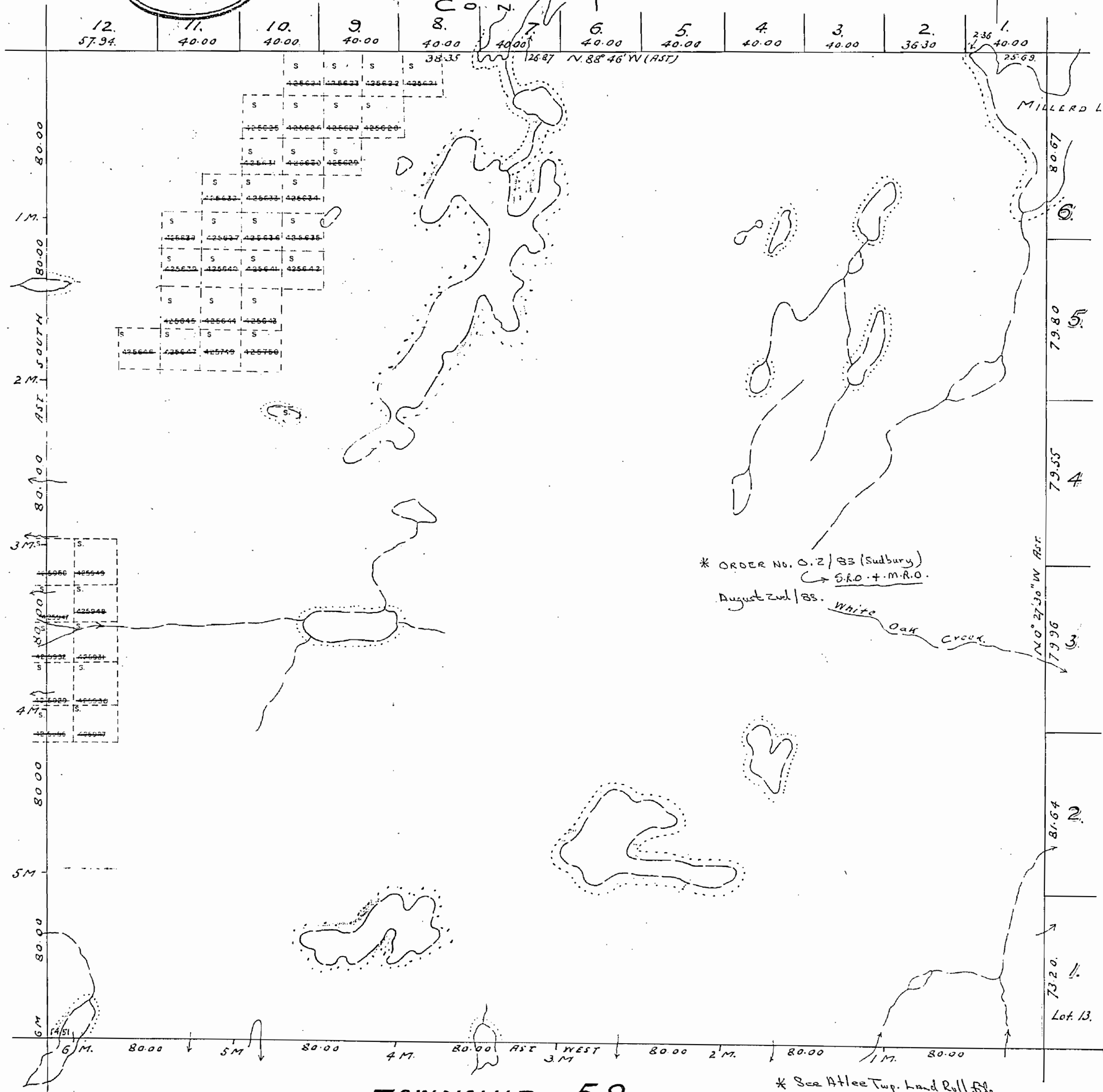
Scale: 40 chains to an inch.

NOTE  
400' Surface Rights Reservation  
around all Lakes and Rivers.

TILTON TWP. OFFICE USE ONLY

TOWNSHIP 68.

LAURA TWP.



N. Bdy. by O. L. S. J. W. Fitzgerald 1898.  
S. " " P. L. S. Wm. Ball - 1873-4.  
E. " " O. L. S. Wm. Stull - 1905.  
W. " " P. L. S. Wm. Ball - 1873-4.

Parcels marked P are Patented  
L Leased  
L.O. under Lic. of Occ.  
Authentic only from Jan'y. 1932.

Dept. of Surveys  
Parliament Buildings  
Toronto Ontario Canada  
Dec 3rd 1930.

HALIFAX

MAP SYMBOLOLOGY

Aerial Cableway	Pipeline (above ground)
Boundary	Railroad
International	Single Track
Provincial	Double Track
District, Township Indian Reserve	Abandoned
Apparatus	Turbine
Lot, Concession	Road
Approximate	Highway, County
Paris Boundary	Township
Bridge	Access (road of doubtful
Road, Railroad	significance of
Building	multiple driveways)
Chimney	Trait, Back Road (barge, alley)
Cliff, Pit, Pile	Rapids
Contours	Double line river with multiple rapids
Interpreted	Double line river with multiple rapids
Approximate	Reservoir
Depression	River, Stream, Canal
Control Points	Approximate
Horizontal	Assumed
Vertical	Direction of flow
Culvert	Shoal
Falls	Spot Elevation (true elevation)
Double line river	Tower
Fence, Hedge, Wall	Transmission Line
Feature Outline (Construction features, etc.)	Pole
Flooded Land	Pylon
Lock	Tunnel
Marsh or Swamp	Utility Poles
Mast	Wharf, Dock, Pier
Mine Head Frame	Wooded Area
Outcrop	

AREAS WITHDRAWN FROM DISPOSITION

M.R.O. - MINING RIGHTS ONLY  
 S.R.O. - SURFACE RIGHTS ONLY  
 M.+S. - MINING AND SURFACE RIGHTS

Description	Order No.	Date	Disposition	File

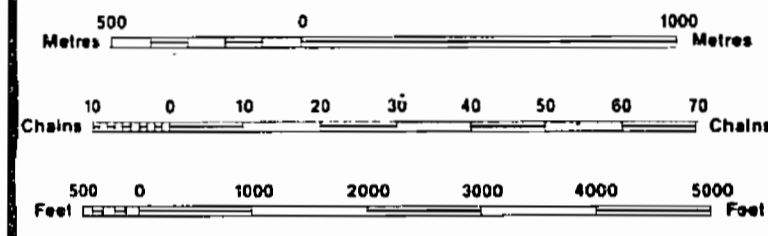
LEGEND

Highway and Route No.	
Other Roads	
Trails	
Surveyed Lines:	
Townships, Base Lines, Etc.	
Lots, Mining Claims, Parcels, Etc.	
Unsurveyed Lines:	
Lot Lines	
Parcel Boundary	
Mining Claims Etc.	
Railway and Right of Way	
Utility Lines	
Non Perennial Stream	
Flooding or Flooding Rights	
Subdivision or Composite Plan	
Reservations	
Original Shoreline	
Marsh or Muskeg	
Mines	
Traverse Monument	

DISPOSITION OF CROWN LANDS

TYPE OF DOCUMENT	SYMBOL
PATENT, SURFACE & MINING RIGHTS	
" SURFACE RIGHTS ONLY	
" MINING RIGHTS ONLY	
LEASE, SURFACE & MINING RIGHTS	
" SURFACE RIGHTS ONLY	
" MINING RIGHTS ONLY	
LICENCE OF OCCUPATION	
ORDER-IN-COUNCIL RESERVATION	
CANCELLED	
SAND & GRAVEL	
LAND USE PERMIT	

NOTE: MINING RIGHTS IN PARCELS PATENTED PRIOR TO MAY 6, 1913, VESTED IN ORIGINAL PATENTEE BY THE PUBLIC LANDS ACT, R.S.O. 1970, CHAP. 380, SEC. 63, SUBSEC. 1.



SCALE 1:20 000  
 GRID ZONE : 17

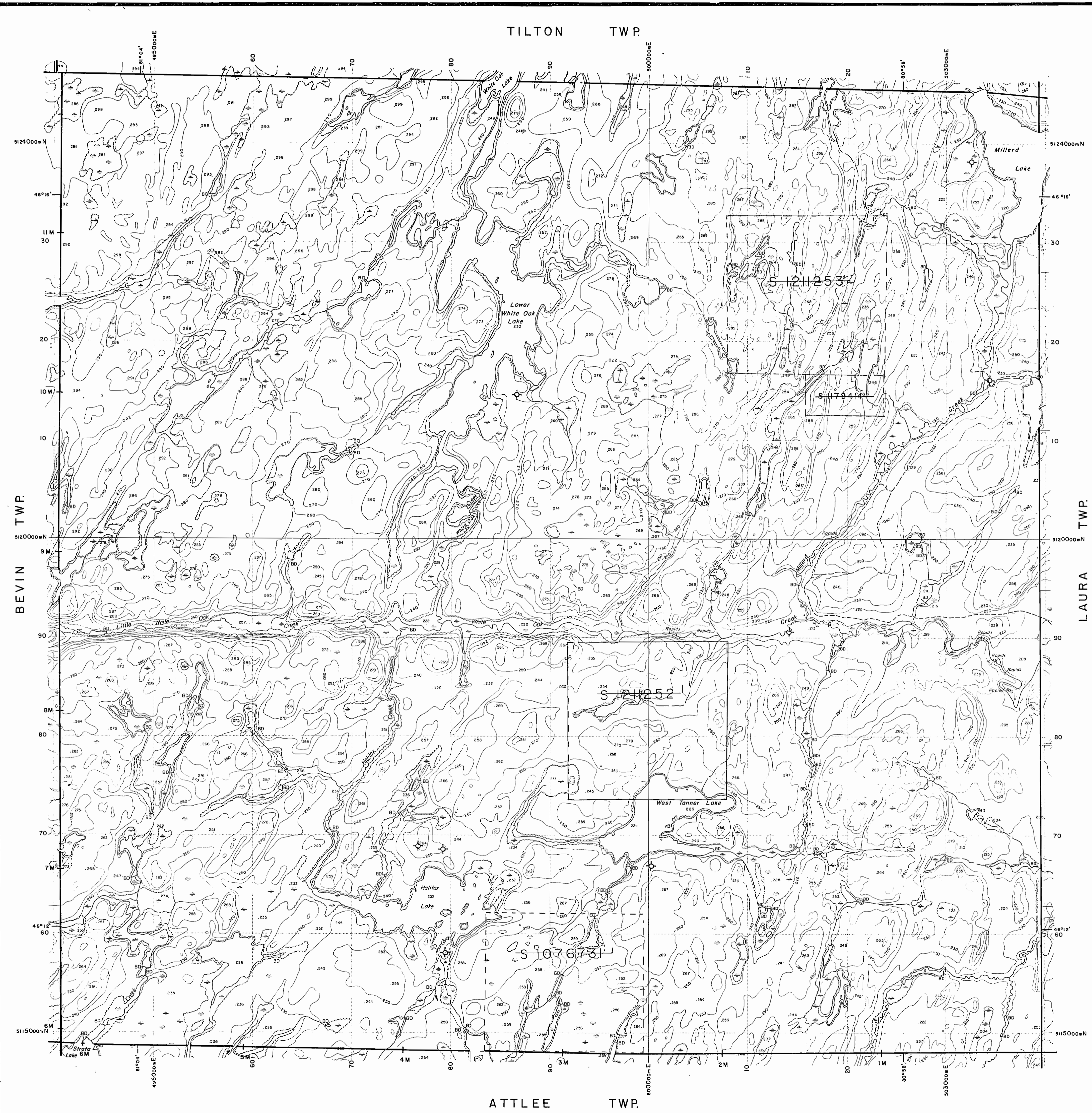
DATE OF ISSUE  
 JUN 16 1998  
 PROVINCIAL RECORDING OFFICE - SUBURRY

THE INFORMATION THAT APPEARS ON THIS MAP HAS BEEN COMPILED FROM VARIOUS SOURCES, AND ACCURACY IS NOT GUARANTEED. THOSE WISHING TO STAKE MINING CLAIMS SHOULD CONSULT WITH THE MINING RECORDER, MINISTRY OF NORTHERN DEVELOPMENT AND MINES, FOR ADDITIONAL INFORMATION ON THE STATUS OF THE LANDS SHOWN HEREON.

TOWNSHIP  
**HALIFAX**  
 M.N.R. ADMINISTRATIVE DISTRICT  
 SUBURRY  
 MINING DIVISION  
 SUBURRY  
 LAND TITLES / REGISTRY DIVISION  
 SUBURRY

Ministry of Natural Resources Ontario  
 Land Management Branch

Original Compilation: JULY, 1985  
 Revised: **G-3195**



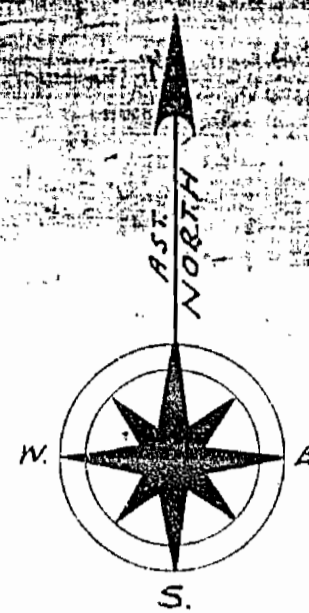
# HALIFAX TWP.

## FORMERLY TOWNSHIP 60

ONTARIO  
 MINISTRY OF NATURAL RESOURCES  
 SURVEYS AND MAPPING BRANCH

DISTRICT OF SUDBURY.  
 SUDBURY MINING DIVISION.

Scale: 40 chains to an inch.

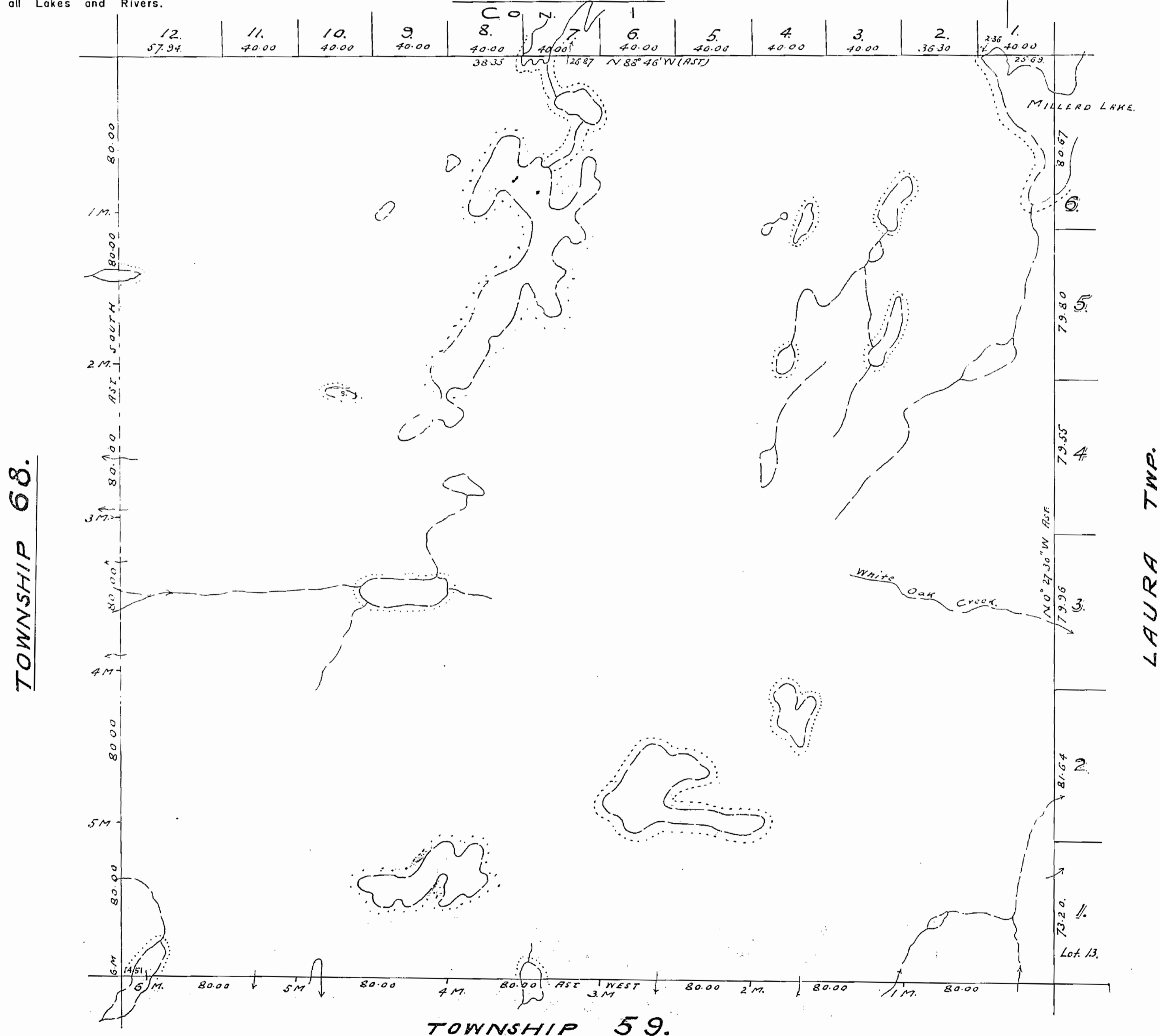


M. 907

**NOTE**

400' Surface Rights Reservation  
 around all Lakes and Rivers.

**TILTON TWP.**



N. Bdy. by O. L. S. J. W. Fitzgerald 1898.  
 S. " " P. L. S. Wm. Ball. 1873-4.  
 E. " " O. L. S. W. W. Stull 1905.  
 W. " " P. L. S. Wm. Ball. 1873-4.

Parcels marked P are Patented  
 L. Leased  
 L.O. under Lic. of occ.  
 Authentic only from Jan'y. 1932.

Dept. of Surveys  
 Parliament Buildings  
 Toronto Ontario Canada.  
 Dec 3rd 1930.

\* IN SERVICE JUNE 1884 - W

HALIFAX

907

# HALIFAX TWP. FORMERLY TOWNSHIP 60

DISTRICT OF SUDBURY.  
SUDBURY MINING DIVISION.

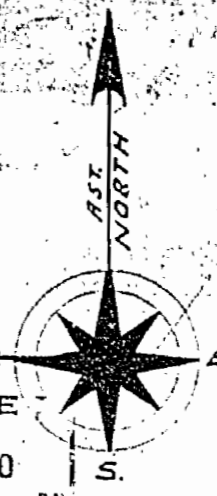
Scale: 40 chains to an inch.

**NOTE**

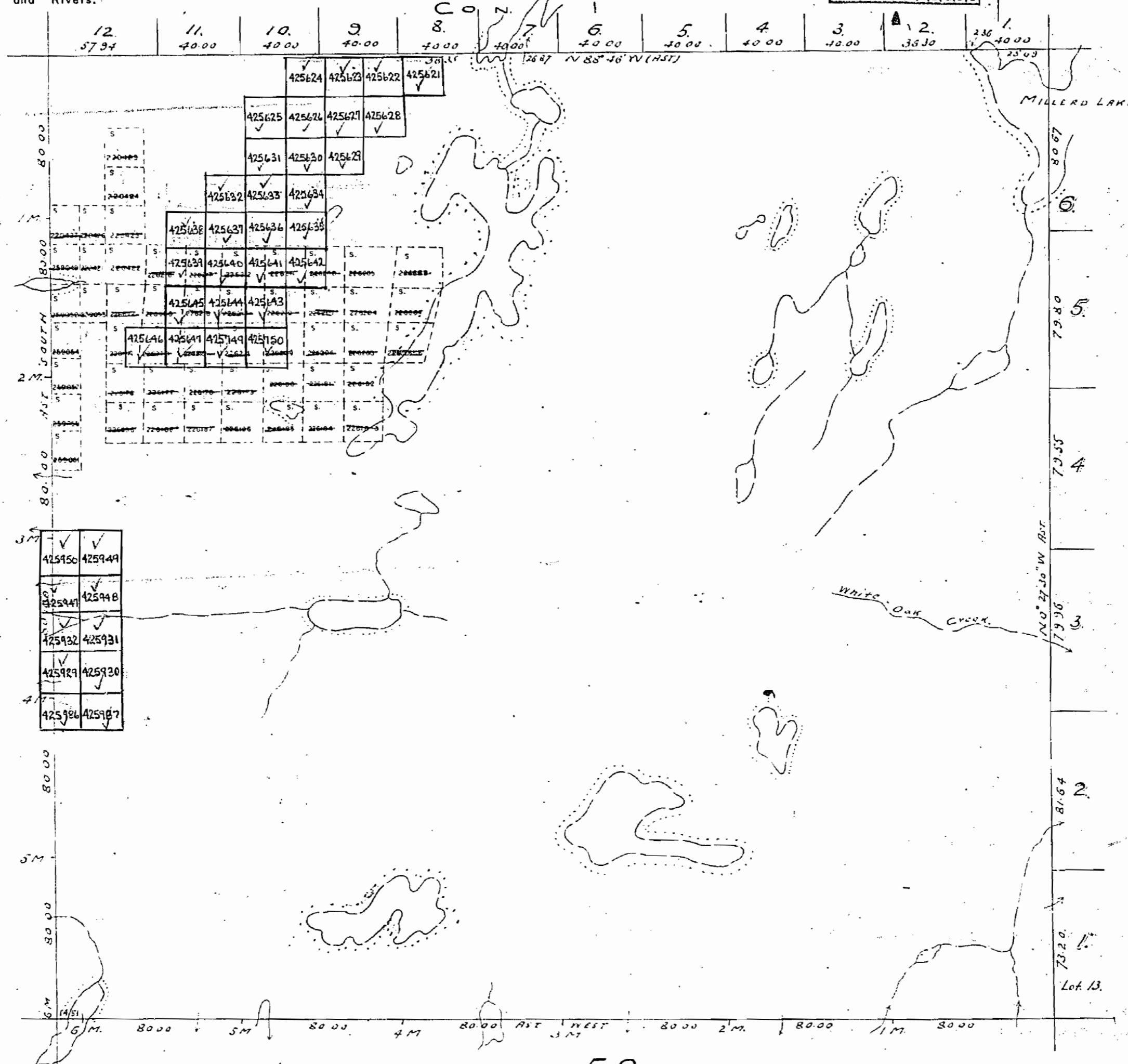
400' Surface Rights Reservation  
around all Lakes and Rivers.

TILTON TWP.

SUDBURY  
RECEIVED  
JUN 22 1970  
A.M. 7,8,9,10,11,12,13,15,16



TOWNSHIP 68.



LAURA TWP.

TOWNSHIP 59.

N Bdy. by O L S. J.W. Fitzgerald 1898  
S. . . . . P L S. Wm Ball 1873-8.  
E. . . . . O L S. Wm Stull 1905.  
W. . . . . P L S. Wm Ball 1873-4.

Parcels marked P are Patented  
L. Leased  
L.O. under Lic. of Occ.  
Authentic only from Jan'y 1932.

Dept. of Surveys  
Parliament Buildings  
Toronto Ontario Canada.

Dec 3rd 1930. **M907**

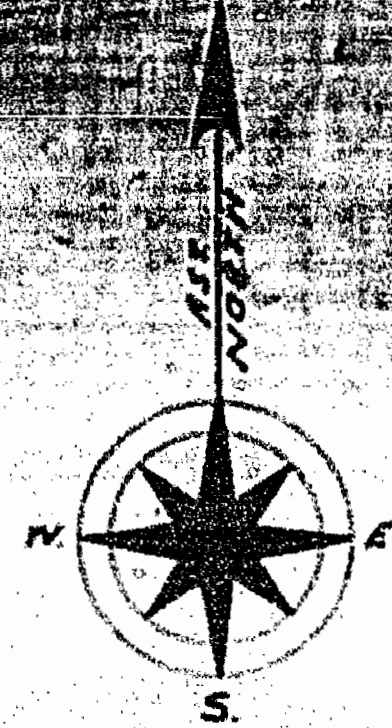
HALIFAX

# HALIFAX TWP. FORMERLY TOWNSHIP 60

ONTARIO  
MINISTRY OF NATURAL RESOURCES  
SURVEYS AND MAPPING BRANCH

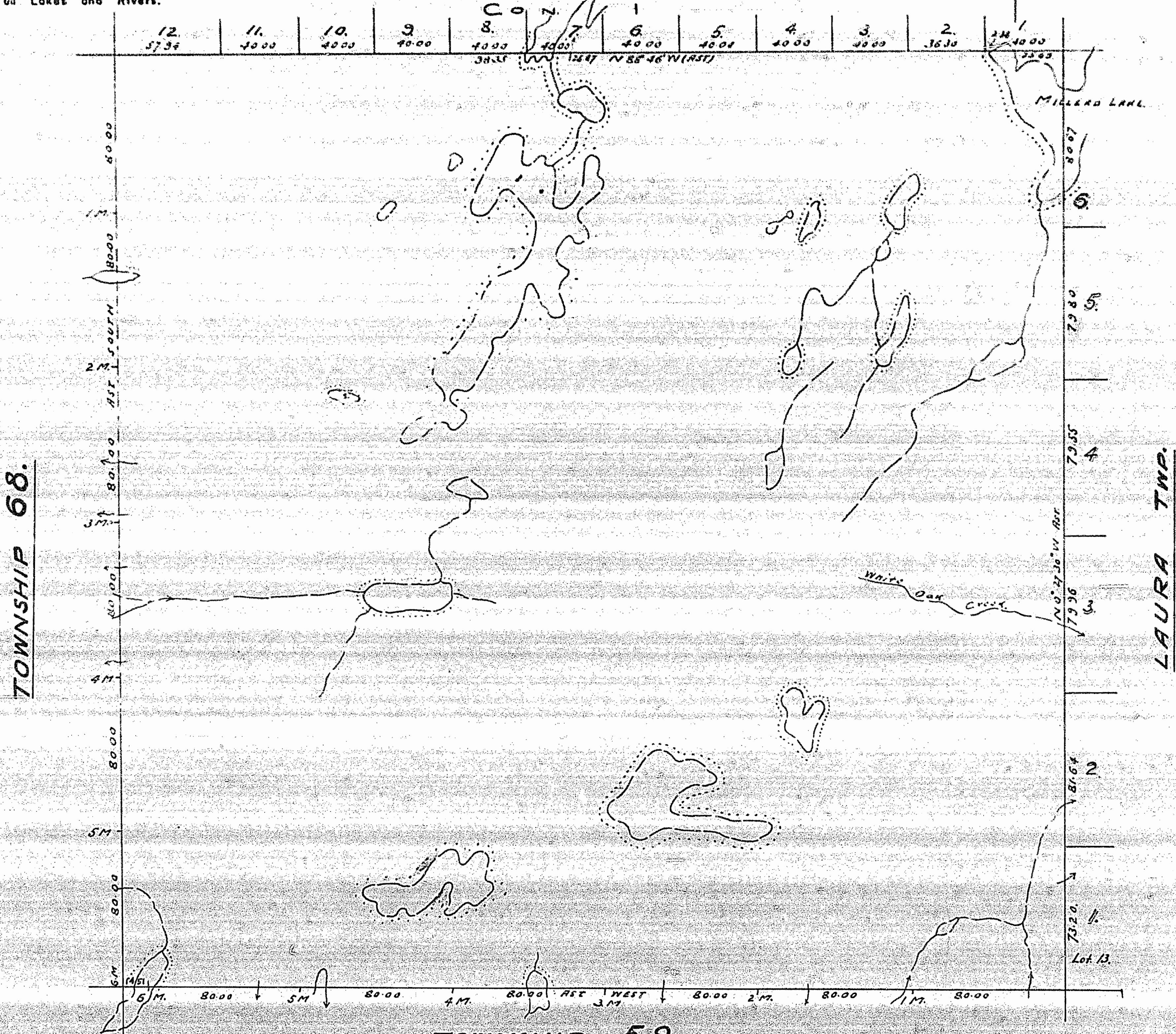
**DISTRICT OF SUDBURY**  
**SUDBURY MINING DIVISION.**

Scale: 40 chains to an inch.



**NOTE**  
400' Surface Rights Reservation  
around all Lakes and Rivers.

## TILTON TWP.



N. Bay. by O. L. S. J. W. Fitzgerald 1898.  
S. " " P. L. S. Wm. Ball 1873-4.  
E. " " O. L. S. W. W. Still 1905.  
W. " " P. L. S. Wm. Ball 1873-4.

Parcels marked P. are Patented  
L. Leased  
L.O. under Lic. of occ.  
Authentic only from Jan'y 1932.

Dept. of Surveys  
Parliament Buildings  
Toronto Ontario Canada

Dec 3<sup>rd</sup> 1930.

\* IN SERVICE JUNE 1884 -

HALIFAX

907

# HALIFAX TWP. FORMERLY TOWNSHIP 60

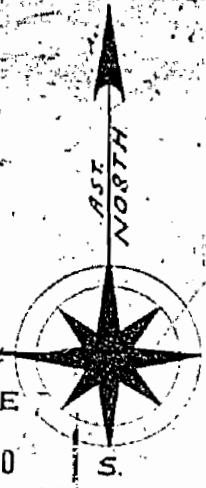
DISTRICT OF SUDBURY.  
SUDBURY MINING DIVISION.

Scale: 40 chains to an inch.

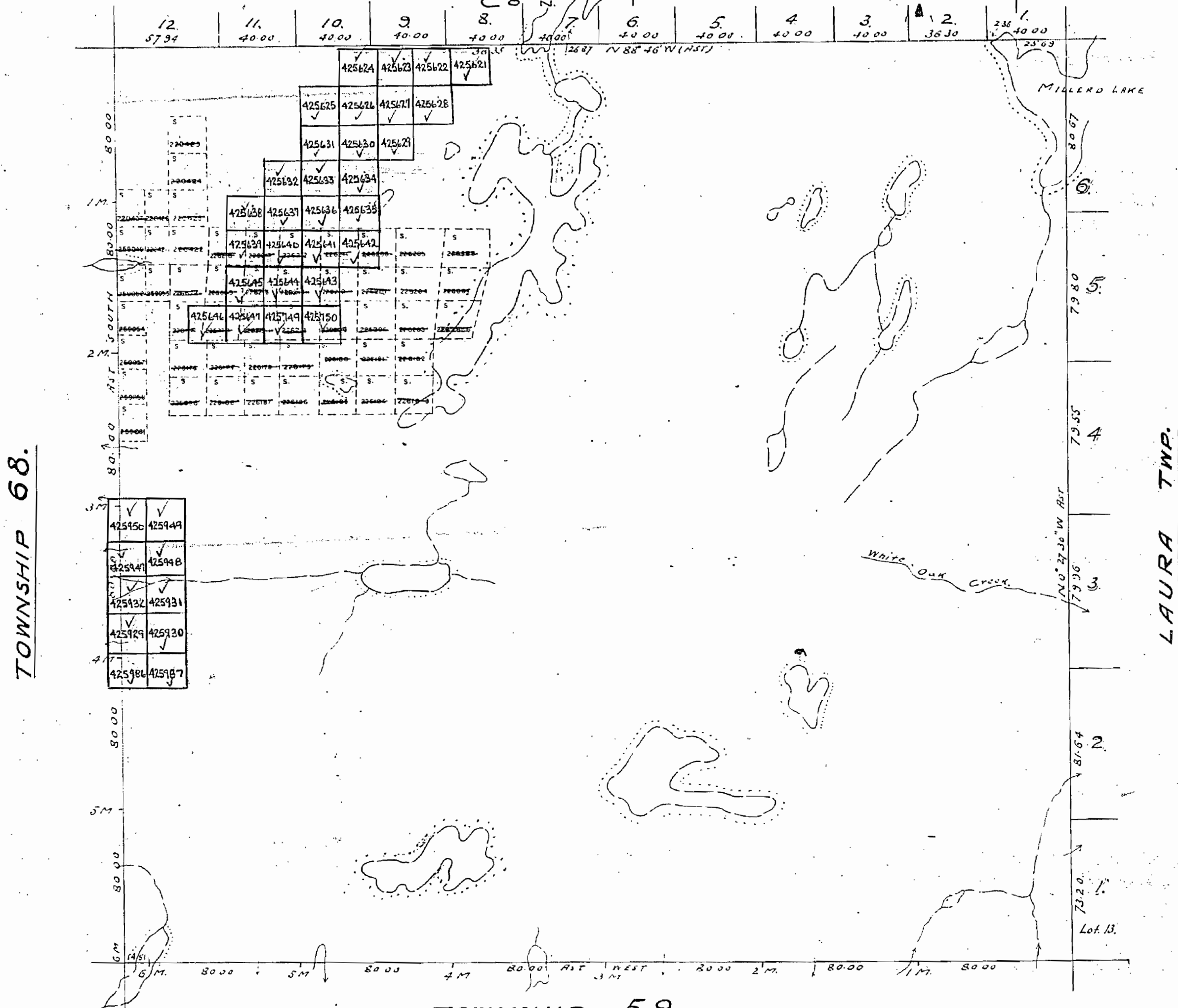
**NOTE**

400' Surface Rights Reservation  
around all Lakes and Rivers.

SUDBURY  
MINING DIV.  
RECEIVE  
JUN 23 1930  
A.M. 7 18 P.M. 11 12 13 15 16



TILTON TWP.



TOWNSHIP 68.

LAURA TWP.

TOWNSHIP 59.

N. Bdy. by O. L. S. J. W. Fitzgerald 1838.  
S. " " P. L. S. Wm. Ball - 1873-4.  
E. " " O. L. S. Wm. Stull - 1905.  
W. " " P. L. S. Wm. Ball - 1873-4.

Parcels marked P are Patented  
L Leased  
L.O. under Lic. of Occ.  
Authentic only from Jan'y. 1932.

Dept. of Surveys  
Parliament Building  
Toronto Ontario Canada

Dec 3<sup>rd</sup> 1930. **M907**

HALIFAX



MAP SYMBOLOLOGY

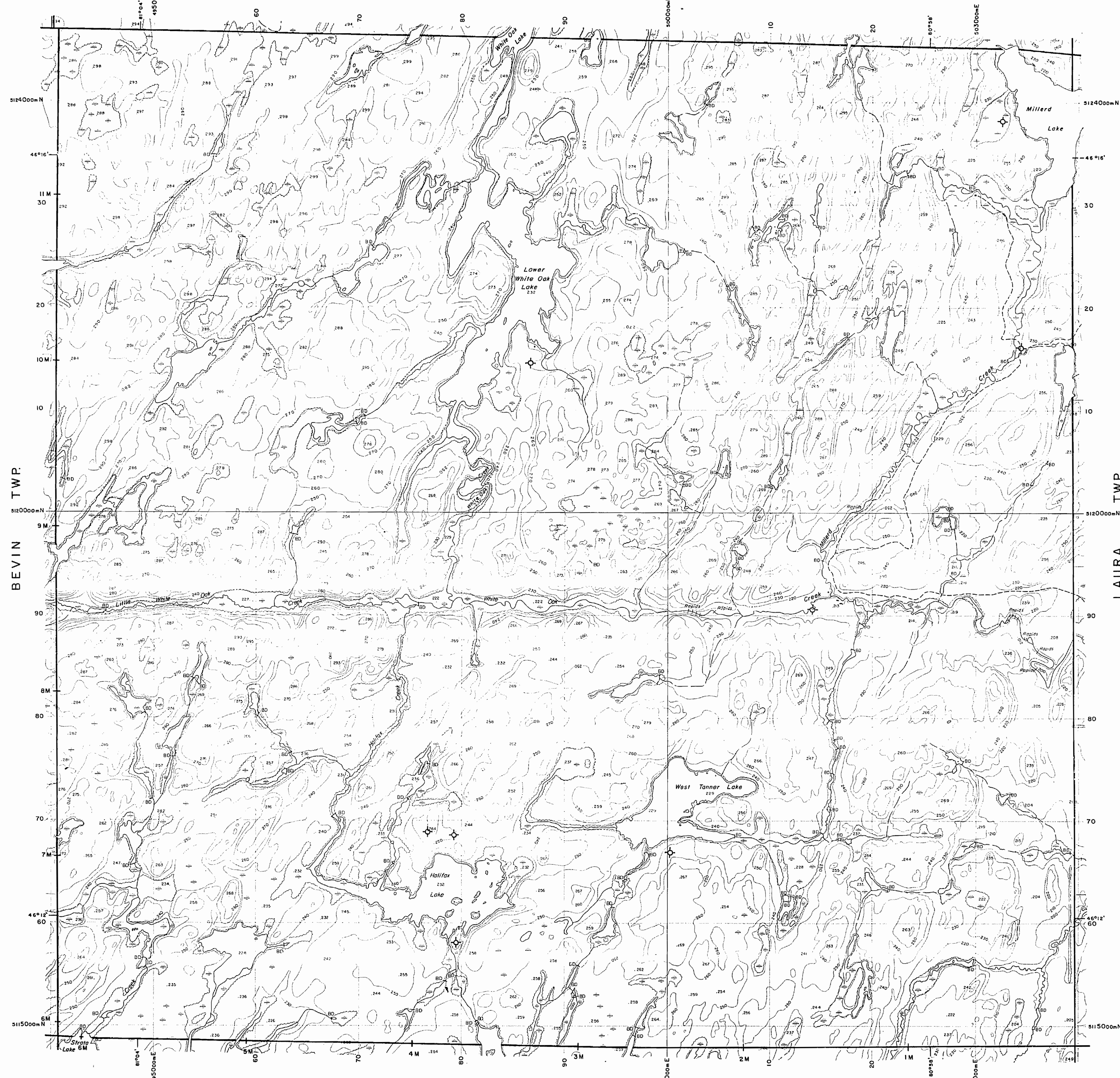
Aerial Cableway	Pipeline (over ground)
Boundary	Railroad
Interpretation	Single track
District, Township	Double track
Index	Abandoned
Approximate	Turbidity
Lot, Concession	Road
Approximate	Highway, County
Park Boundary	Trunk Road (single, double)
Bridge	Access (least of depthful, not less than 10m)
Head, Railroad	Trail, Bush Road (single, double)
Building	Rapids
Chimney	Double line river with multiple rapids
Cliff, Pit, Pile	Double line river with multiple rapids
Contours	Reservoir
Interpretation	River, Stream, Canal
Approximate	Approximate
Control Points	Horizontal
Vertical	Vertical
Culvert	Fall
Falls	Spot Elevation
Double line river	Tower
Fence, Hedge, Wall	Transmission Line
Feature Outline (Construction, etc.)	Pole
Flooded Land	Palms
Lock	Tunnel
Marsh or Swamp	Utility Pole
Mast	Wharf, Dock, Pier
Mine Head Frame	Wooded Area
Outcrop	

AREAS WITHDRAWN FROM DISPOSITION

- M.R.O. - MINING RIGHTS ONLY
- S.R.O. - SURFACE RIGHTS ONLY
- M.+S. - MINING AND SURFACE RIGHTS

Description	Order No.	Date	Disposition	File

TILTON TWP.



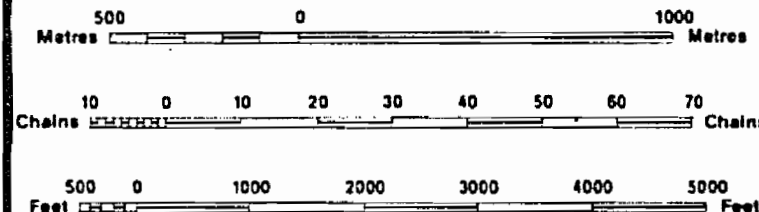
LEGEND

HIGHWAY AND ROUTE No.	
OTHER ROADS	
TRAILS	
SURVEYED LINES:	
TOWNSHIPS, BASE LINES, ETC.	
LOTS, MINING CLAIMS, PARCELS, ETC.	
UNSURVEYED LINES	
LOT LINES	
PARCEL BOUNDARY	
MINING CLAIMS ETC.	
RAILWAY AND RIGHT OF WAY	
UTILITY LINES	
NON-PERENNIAL STREAM	
FLOODING OR FLOODING RIGHTS	
SUBDIVISION OR COMPOSITE PLAN	
RESERVATIONS	
ORIGINAL SHORELINE	
MARSH OR MUSKEG	
MINES	
TRAVERSE MONUMENT	

DISPOSITION OF CROWN LANDS

TYPE OF DOCUMENT	SYMBOL
PATENT, SURFACE & MINING RIGHTS	
" SURFACE RIGHTS ONLY	
" MINING RIGHTS ONLY	
LEASE, SURFACE & MINING RIGHTS	
" SURFACE RIGHTS ONLY	
" MINING RIGHTS ONLY	
LICENCE OF OCCUPATION	
ORDER-IN-COUNCIL	
RESERVATION	
CANCELLED	
SAND & GRAVEL	
LAND USE PERMIT	

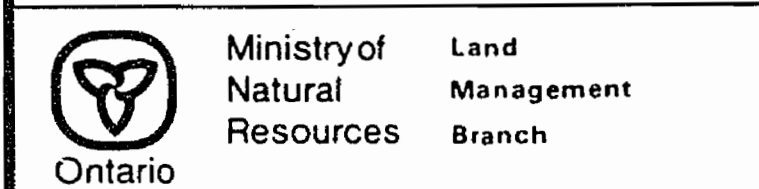
NOTE: MINING RIGHTS IN PARCELS PATENTED PRIOR TO MAY 6, 1912, VESTED IN ORIGINAL PATENTEES BY THE PUBLIC LANDS ACT, R.S.O. 1970, CHAP. 380, SEC. 63, SUBSEC. 1.



SCALE 1:20 000  
GRID ZONE : 17

THE INFORMATION THAT APPEARS ON THIS MAP HAS BEEN COMPILED FROM VARIOUS SOURCES AND ACCURACY IS NOT GUARANTEED. THOSE WISHING TO STAKE MINING CLAIMS SHOULD CONSULT WITH THE MINING RECORDER, MINISTRY OF NORTHERN DEVELOPMENT AND MINES, FOR ADDITIONAL INFORMATION ON THE STATUS OF THE LANDS SHOWN HEREON.

TOWNSHIP  
**HALIFAX**  
M.N.R. ADMINISTRATIVE DISTRICT  
SUDBURY  
MINING DIVISION  
SUDBURY  
LAND TITLES / REGISTRY DIVISION  
SUDBURY



Original Completion: JULY, 1985  
Revised:  
Number  
**G-3195**

ATLEE TWP.