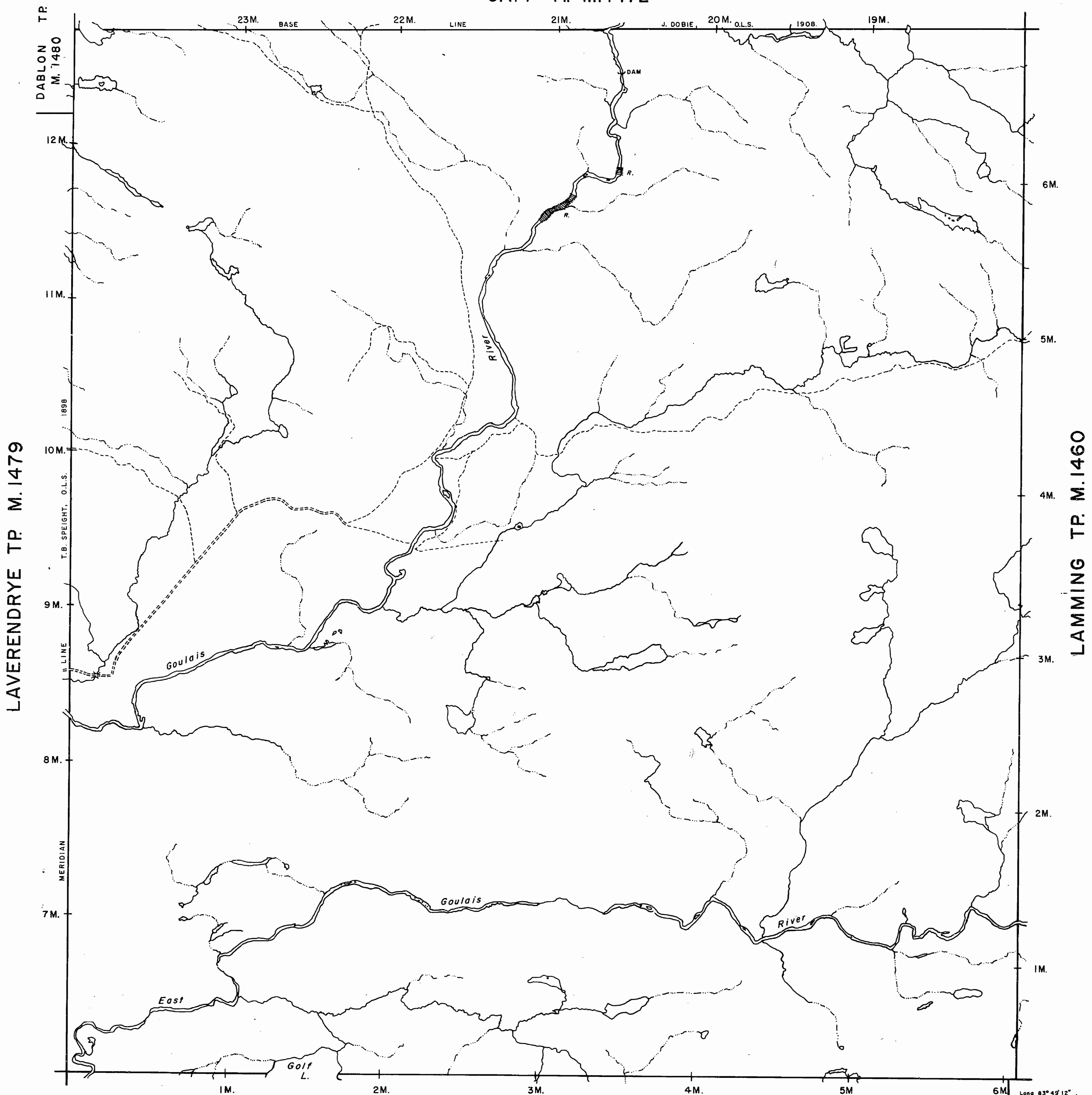
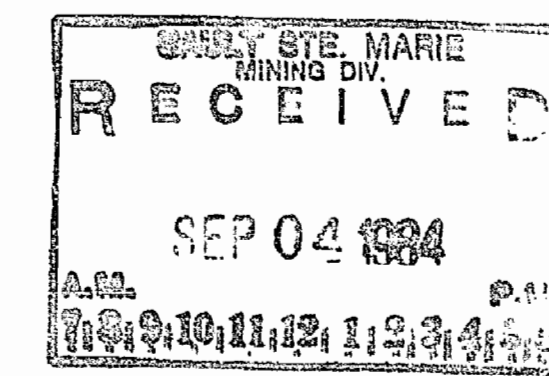


GAPP TP M.1472



NOTES

400' surface rights reservation along the shores of all lakes and rivers.



LEGEND

- PATENTED LAND Ⓟ or \*
- PATENTED FOR SURFACE RIGHTS ONLY Ⓞ
- LEASE Ⓢ
- LICENSE OF OCCUPATION L.O.
- CROWN LAND SALES C.S.
- LOCATED LAND Loc.
- CANCELLED C.
- MINING RIGHTS ONLY M.R.O.
- SURFACE RIGHTS ONLY S.R.O.
- HIGHWAY & ROUTE NO.
- ROADS
- TRAILS
- RAILWAYS
- POWER LINES
- MARSH OR MUSKEG
- MINES

\*used only with summer resort locations or when space is limited

TOWNSHIP OF  
**HYNES**  
 (Former TP.23R.II)  
 DISTRICT OF  
 ALGOMA

SAULT STE. MARIE  
 MINING DIVISION

SCALE : 1 INCH = 40 CHAINS (1/2 MILE)

DR. *K.I.* PLAN NO. **M.1470**  
 DATE *DEC. '71.*

ONTARIO  
 MINISTRY OF NATURAL RESOURCES  
 SURVEYS AND MAPPING BRANCH

DAUMONT TP M.1469

Long 83°45'12" Approx  
 Lat. 46°52'56"

*Replaced by G. 3107 - Jan 5/87 M.S.*

**G.3170**

C-3107

HYNES TWP

C-3107

REFERENCES

AREAS WITHDRAWN FROM DISPOSITION

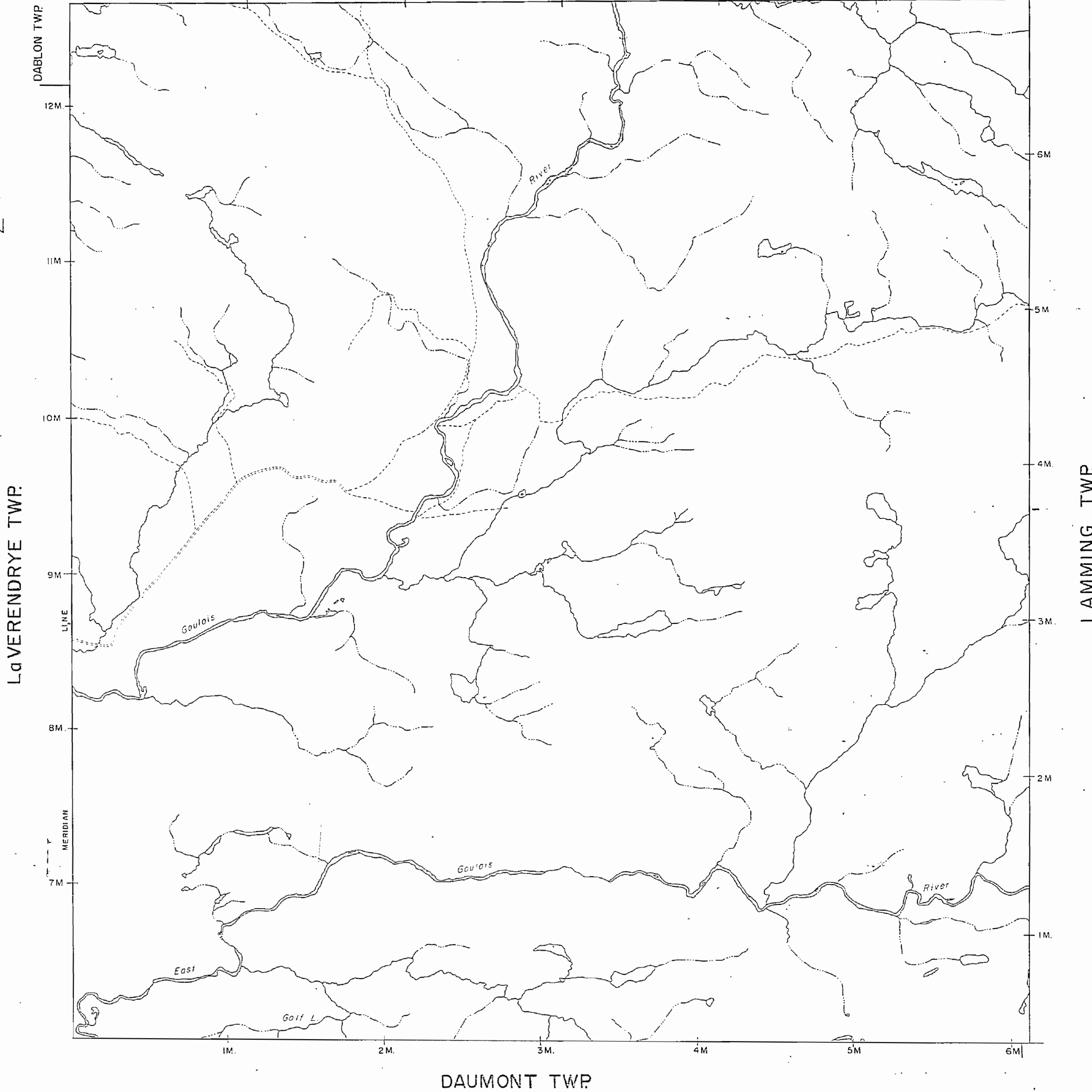
M.R.O. - MINING RIGHTS ONLY

S.R.O. - SURFACE RIGHTS ONLY

M.+S. - MINING AND SURFACE RIGHTS

Description Order No. Date Disposition File

GAPP TWP



LEGEND

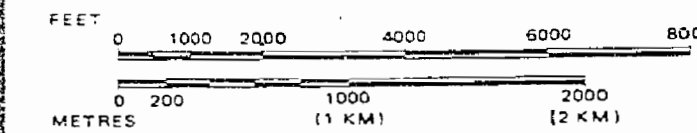
- HIGHWAY AND ROUTE No.
- OTHER ROADS
- TRAILS
- SURVEYED LINES:
  - TOWNSHIPS, BASE LINES, ETC.
  - LOTS, MINING CLAIMS, PARCELS, ETC.
- UNSURVEYED LINES:
  - LOT LINES
  - PARCEL BOUNDARY
  - MINING CLAIMS ETC.
- RAILWAY AND RIGHT OF WAY
- UTILITY LINES
- NON-PERENNIAL STREAM
- FLOODING OR FLOODING RIGHTS
- SUBDIVISION OR COMPOSITE PLAN
- RESERVATIONS
- ORIGINAL SHORELINE
- MARSH OR MUSKEG
- MINES
- TRAVERSE MONUMENT

DISPOSITION OF CROWN LANDS

TYPE OF DOCUMENT	SYMBOL
PATENT, SURFACE & MINING RIGHTS	
" SURFACE RIGHTS ONLY	
" MINING RIGHTS ONLY	
LEASE, SURFACE & MINING RIGHTS	
" SURFACE RIGHTS ONLY	
" MINING RIGHTS ONLY	
LICENCE OF OCCUPATION	
ORDER-IN-COUNCIL	
RESERVATION	
CANCELLED	
SAND & GRAVEL	

NOTE: MINING RIGHTS IN PARCELS PATENTED PRIOR TO MAY 6, 1913, VESTED IN ORIGINAL PATENTEE BY THE PUBLIC LANDS ACT, R.S.O. 1970, CHAP. 380, SEC. 63, SUBSEC 1.

SCALE: 1 INCH = 40 CHAINS



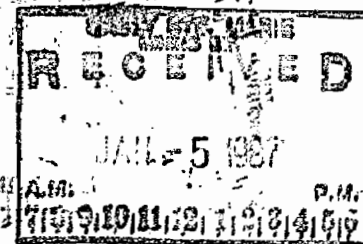
TOWNSHIP  
**HYNES**  
 M.N.R. ADMINISTRATIVE DISTRICT  
**SAULT STE. MARIE**  
 MINING DIVISION  
**SAULT STE. MARIE**  
 LAND TITLES / REGISTRY DIVISION  
**ALGOMA**

Ministry of Natural Resources Ontario  
 Ministry of Northern Development and Mines

Date DECEMBER, 1986 Number

G-3107

*replaced Aug 25/88 - CK.*



C-3107

HYNES TWP

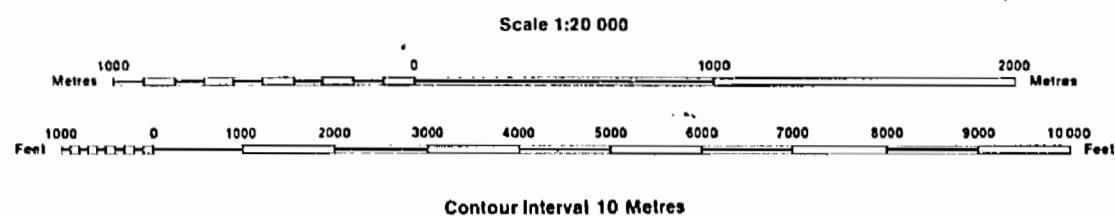
C-3107



**INDEX TO LAND DISPOSITION**

PLAN  
**G-3107**  
 TOWNSHIP  
**HYNES**

M.N.R. ADMINISTRATIVE DISTRICT  
**SAULT STE. MARIE**  
 MINING DIVISION  
**SAULT STE. MARIE**  
 LAND TITLES/REGISTRY DIVISION  
**ALGOMA**



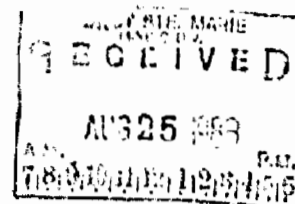
Boundary	.....
Township, Meridian, Baseline	.....
Road allowance; surveyed	.....
shoreline	.....
Lot/Concession; surveyed	.....
unsurveyed	.....
Parcel; surveyed	.....
unsurveyed	.....
Right-of-way; road	.....
railway	.....
utility	.....
Reserve	.....
Cliff, Pit, Pile	.....
Contour	.....
Interpolated	.....
Approximate	.....
Depression	.....
Control point (horizontal)	.....
Flooded land	.....
Mine head frame	.....
Pipeline (above ground)	.....
Railway; single track	.....
double track	.....
abandoned	.....
Road; highway, county, township	.....
access	.....
trail, bush	.....
Shoreline (original)	.....
Transmission line	.....
Wooded area	.....

Patent	.....
Surface & Mining Rights	.....
Surface Rights Only	.....
Mining Rights Only	.....
Lease	.....
Surface & Mining Rights	.....
Surface Rights Only	.....
Mining Rights Only	.....
Licence of Occupation	.....
Order-in-Council	.....
Cancelled	.....
Reservation	.....
Sand & Gravel	.....

Description	Order No.	Date	Disposition	File
(R) SEC. 36	W-1/90	90/01/08	M85	188536
		90/10/22	EFFECTIVE	

Map base and land disposition drafting by Surveys and Mapping Branch, Ministry of Natural Resources.

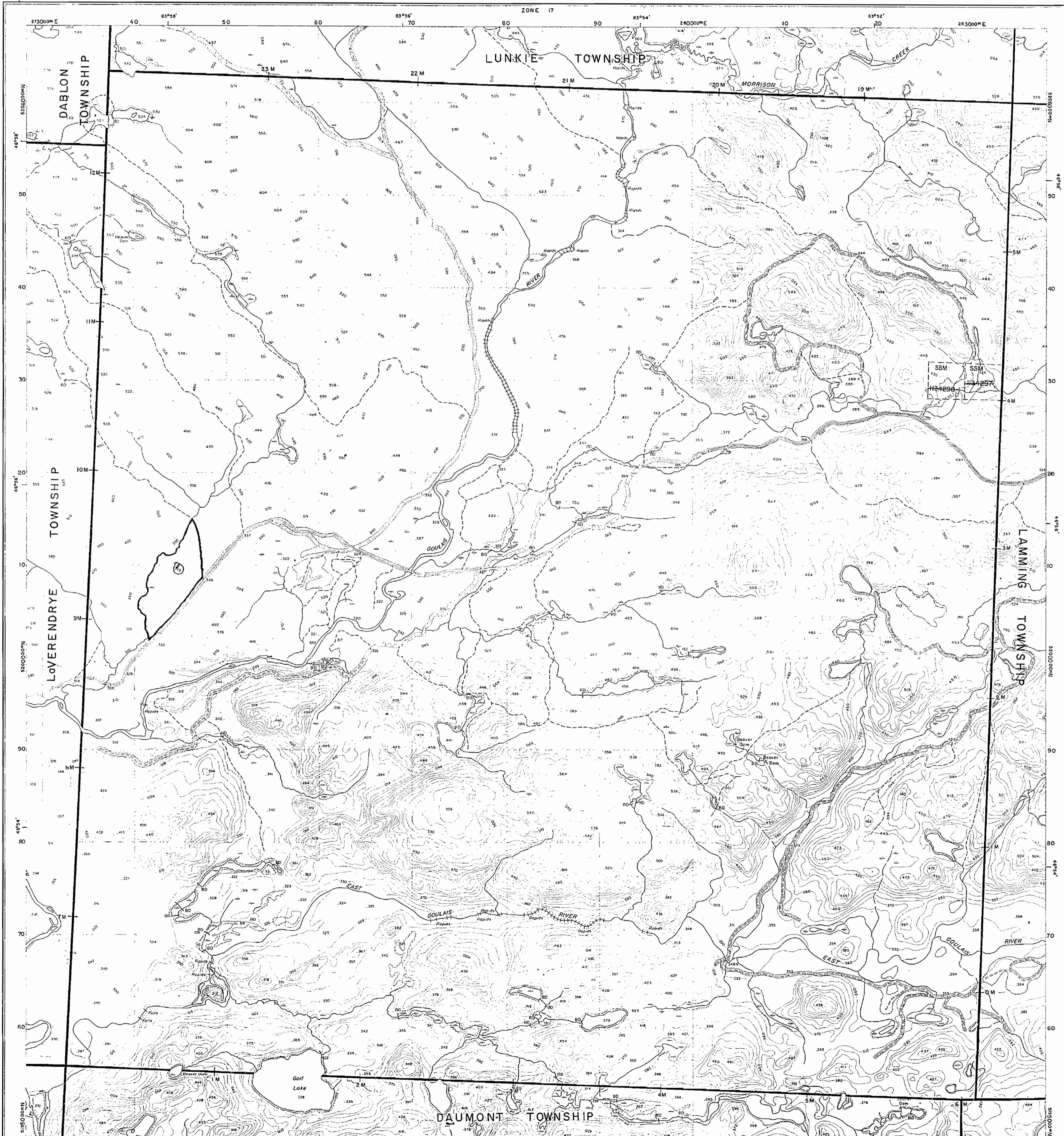
The disposition of land, location of lot fabric and parcel boundaries on this index was compiled for administrative purposes only.



THE INFORMATION THAT APPEARS ON THIS MAP HAS BEEN COMPILED FROM VARIOUS SOURCES AND ACCURACY IS NOT GUARANTEED. THOSE WISHING TO STAKE MINING CLAIMS SHOULD CONSULT WITH THE MINING RECORDER, MINISTRY OF NORTHERN DEVELOPMENT AND MINES FOR ADDITIONAL INFORMATION ON THE STATUS OF THE LANDS SHOWN HEREON.

The 1980 Magnetic Bearing  
 Approx. 1% Annual Change  
 Increasing 24

1791-92

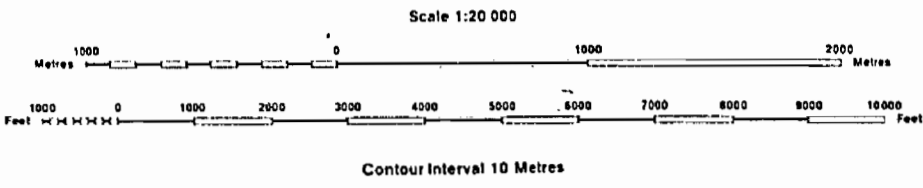




**INDEX TO LAND DISPOSITION**

PLAN  
**G-3107**  
 TOWNSHIP  
**HYNES**

M.N.R. ADMINISTRATIVE DISTRICT  
**SAULT STE. MARIE**  
 MINING DIVISION  
**SAULT STE. MARIE**  
 LAND TITLES/REGISTRY DIVISION  
**ALGOMA**



**SYMBOLS**

Boundary	.....
Township, Meridian, Baseline.....	—————
Road allowance; surveyed.....	———
shoreline.....	———
Lot/Concession; surveyed.....	———
unsurveyed.....	.....
Parcel; surveyed.....	———
unsurveyed.....	.....
Right-of-way; road.....	———
railway.....	———
utility.....	———
Reservation.....	.....
Chf. Pit, Pile.....	.....
Contour.....	.....
Interpolated.....	.....
Approximate.....	.....
Depression.....	.....
Control point (horizontal).....	.....
Flooded land.....	.....
Mine head frame.....	.....
Pipeline (above ground).....	.....
Railway; single track.....	.....
double track.....	.....
abandoned.....	.....
Road; highway, county, township.....	.....
access.....	.....
trail, bush.....	.....
Shoreline (original).....	.....
Transmission line.....	.....
Wooded area.....	.....

**DISPOSITION OF CROWN LANDS**

Patent	.....
Surface & Mining Rights.....	.....
Surface Rights Only.....	.....
Mining Rights Only.....	.....
Lease	.....
Surface & Mining Rights.....	.....
Surface Rights Only.....	.....
Mining Rights Only.....	.....
Licence of Occupation.....	.....
Order-in-Council.....	.....
Cancelled.....	.....
Reservation.....	.....
Sand & Gravel.....	.....

**AREAS WITHDRAWN FROM DISPOSITION**

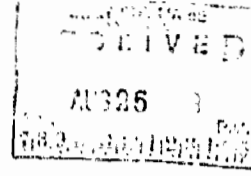
MRO - Mining Rights Only  
 SRO - Surface Rights Only  
 M+S - Mining and Surface Rights

Description	Order No.	Date	Disposition	File
(R) SEC. 36	W-190	90/01/08	MBS	188536
		90/01/22		

THE INFORMATION THAT APPEARS ON THIS MAP HAS BEEN COMPILED FROM VARIOUS SOURCES, AND ACCURACY IS NOT GUARANTEED. THOSE WISHING TO STAKE MINING CLAIMS SHOULD CONSULT WITH THE MINING RECORDER, MINISTRY OF NORTHERN DEVELOPMENT AND MINES, FOR ADDITIONAL INFORMATION ON THE STATUS OF THE LANDS SHOWN HEREIN.

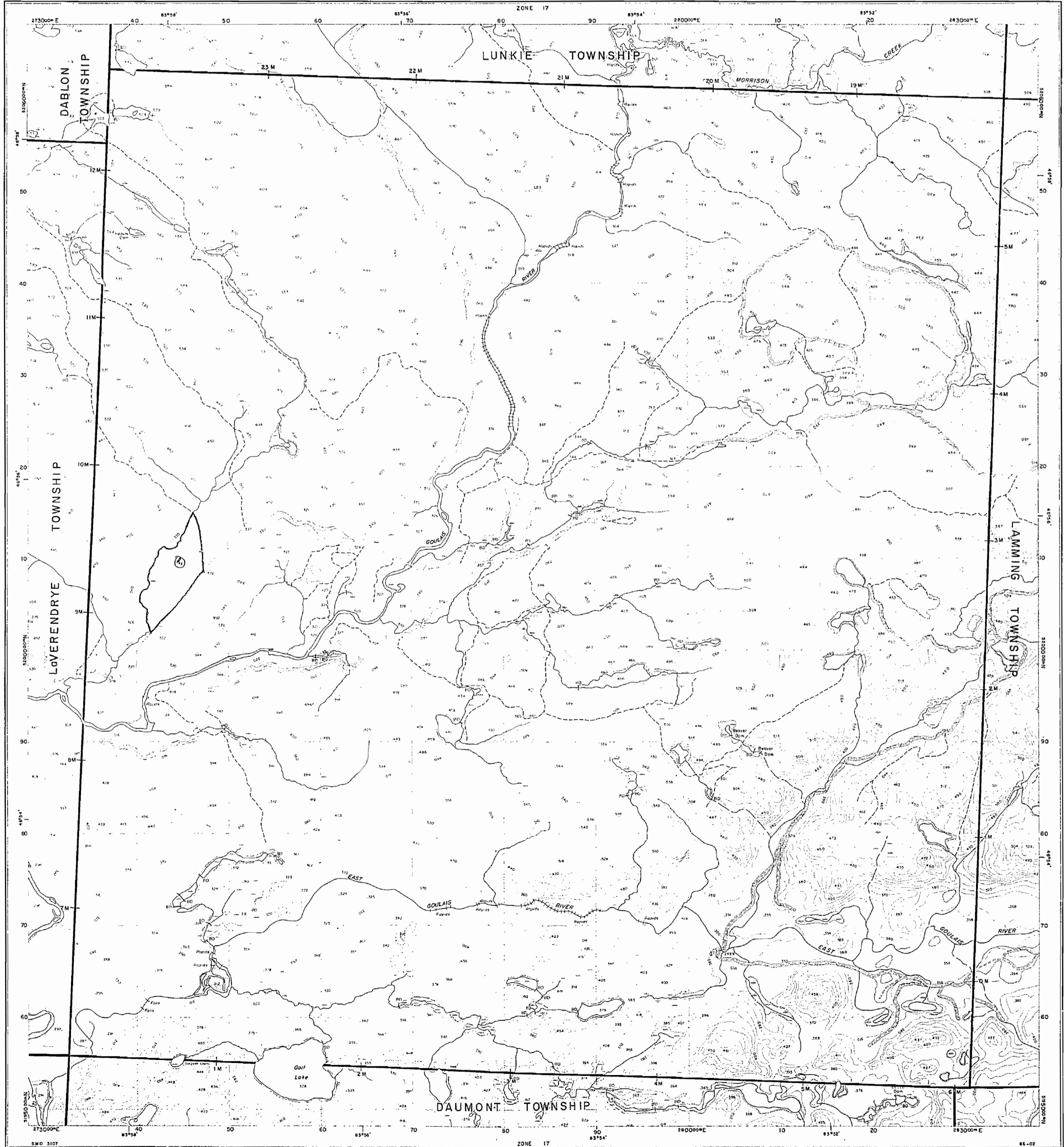
Map base and land disposition drafting by Surveys and Mapping Branch, Ministry of Natural Resources.

The disposition of land, location of lot fabric and parcel boundaries on this index was compiled for administrative purposes only.



The 1980 Magnetic Bearing Approx. 115° Annual Change Increasing 2°

1791-72







1470

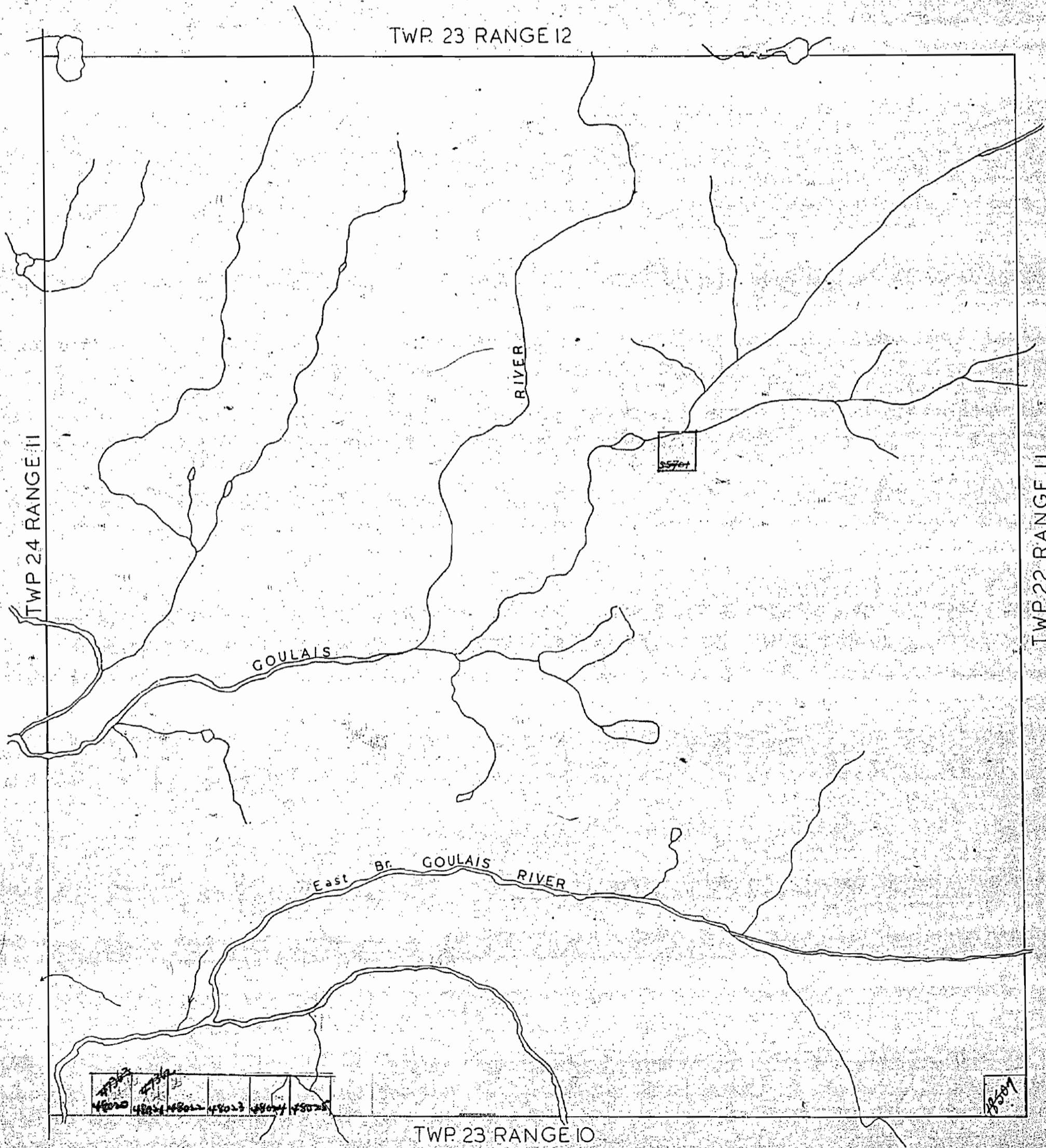
# TWP. 23 RANGE XI

(HYNES) M. 1470

SAULT STE. MARIE MINING DIVISION  
DISTRICT OF ALGOMA

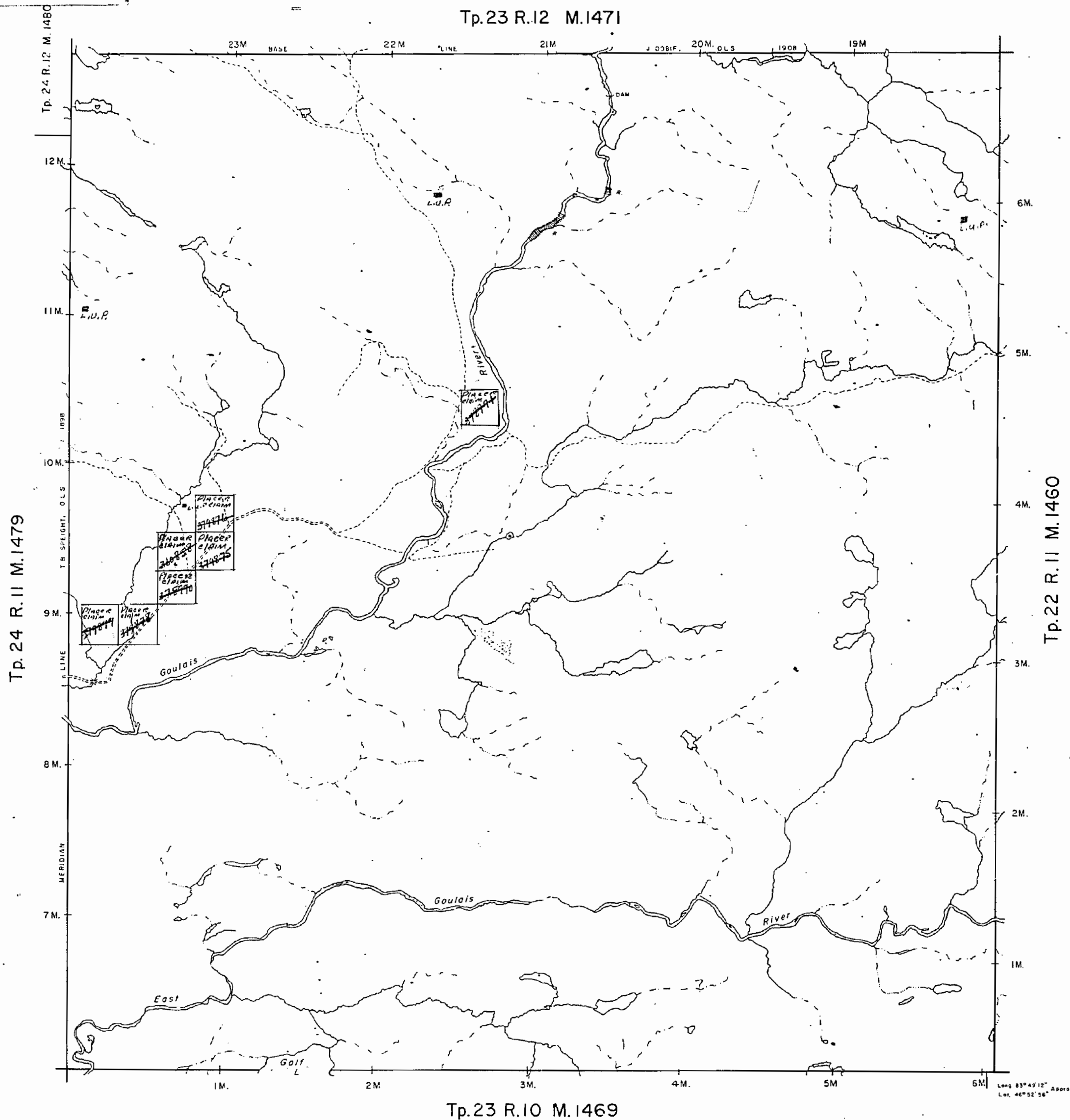
Scale 40 Chains 1 Inch

OFFICE MAP



1470

Tp.23 R.12 M.1471



NOTES

400 surface rights reservation along the shores of all lakes and rivers.

S. S. MARIE  
MINING DIV.  
**RECEIVED**  
FEB 16 1972  
AM 78010112123456  
A

LEGEND

- PATENTED LAND P or C
- PATENTED FOR SURFACE RIGHTS ONLY L
- LEASE L
- LICENSE OF OCCUPATION L.O.
- CROWN LAND SALES C.S.
- LOCATED LAND Loc.
- CANCELLED C
- MINING RIGHTS ONLY M.R.G.
- SURFACE RIGHTS ONLY S.R.O.
- HIGHWAY & ROUTE NO.
- ROADS
- TRAILS
- RAILWAYS
- POWER LINES
- MARSH OR MUSKEG
- MINES

\*used only with summer resort locations or when space is limited

TOWNSHIP OF

**Tp.23 R.11**

DISTRICT OF (HYNES)  
ALGOMA

SAULT STE. MARIE  
MINING DIVISION

SCALE : 1 INCH. = 40 CHAINS (1/2 MILE)

DR *K I* PLAN NO. **M.1470**  
DATE *DEC '71*

ONTARIO  
DEPARTMENT OF MINES  
AND NORTHERN AFFAIRS

Tp.23 R.10 M.1469

Long 83°49'12" Approx  
Lat. 46°52'56"



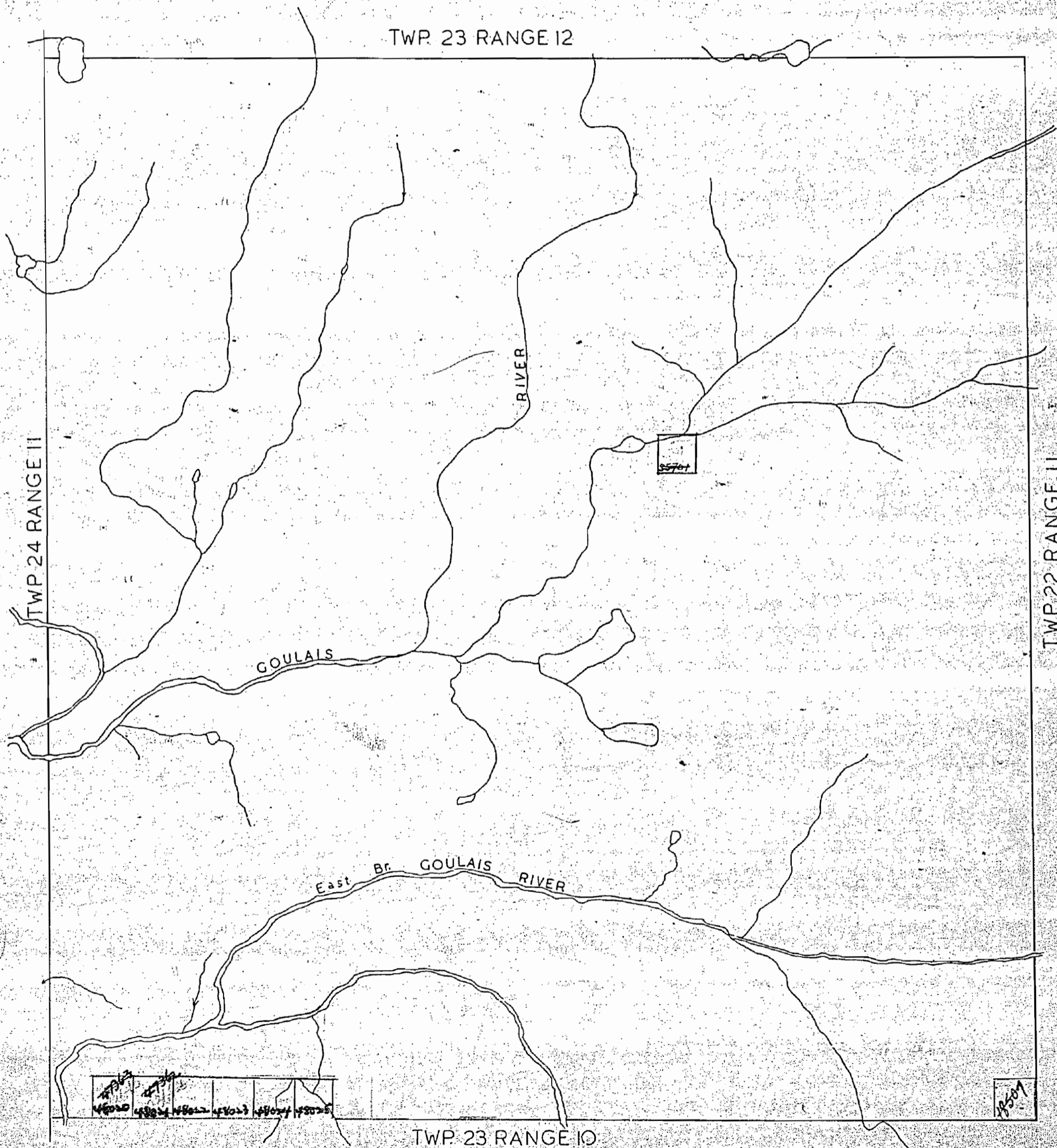
1470

# TWP. 23 RANGE XI

(HYNES) M. 1470

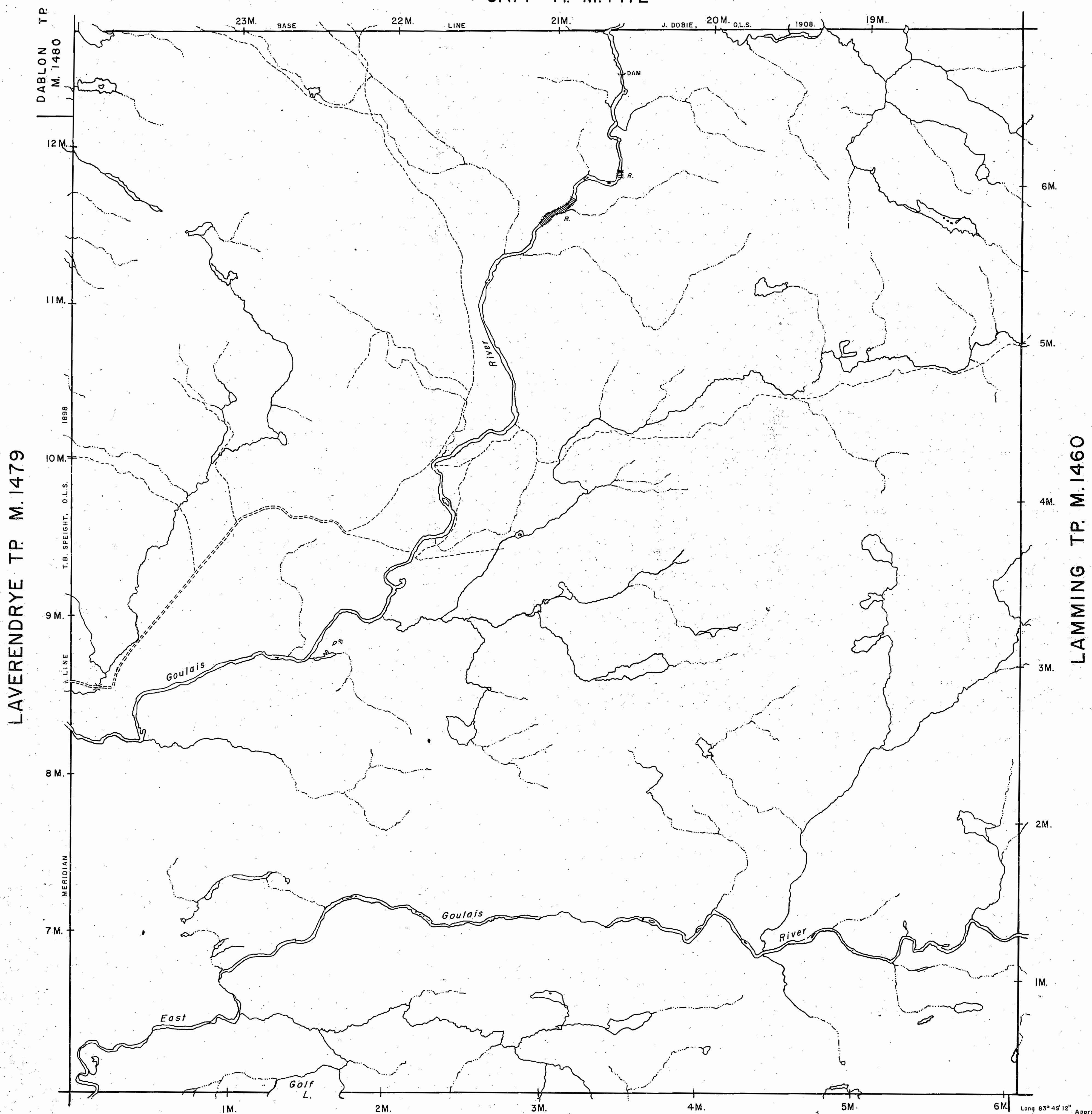
SAULT STE. MARIE MINING DIVISION  
DISTRICT OF ALGOMA  
Scale 40 Chains 1 Inch

OFFICE MAP





GAPP TP. M. 1472

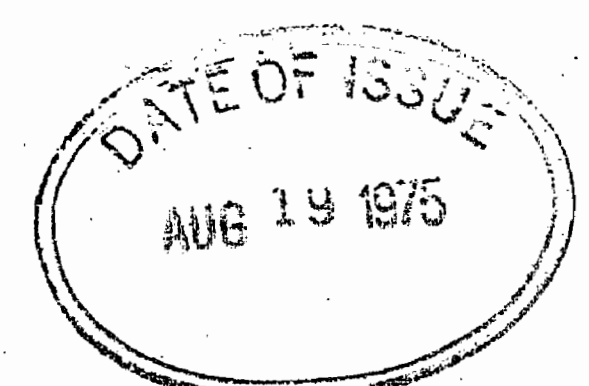


NOTES

400 surface rights reservation along the shores of all lakes and rivers.

*NOTE - This Twp. is covered by Unspecified Pit Permit No. 15177-32. ~~15177-32~~ - Wabunish of Canada Ltd. - (see file for details)*

*NOTE - Part of this Twp. is covered by Unspecified Pit Permit No. 2475. ABITIBI PAPER COMPANY LTD. #15177-32 (see file for details).*



LEGEND

- PATENTED LAND Ⓟ or ●\*
- PATENTED FOR SURFACE RIGHTS ONLY Ⓞ
- LEASE Ⓢ
- LICENSE OF OCCUPATION L.O.
- CROWN LAND SALES C.S.
- LOCATED LAND Loc.
- CANCELLED C.
- MINING RIGHTS ONLY M.R.O.
- SURFACE RIGHTS ONLY S.R.O.
- HIGHWAY & ROUTE NO.
- ROADS
- TRAILS
- RAILWAYS
- POWER LINES
- MARSH OR MUSKEG
- MINES

\*used only with summer resort locations or when space is limited

TOWNSHIP OF  
**HYNES**  
 (Former TP. 23 R. 11)  
 DISTRICT OF  
 ALGOMA

SAULT STE. MARIE  
 MINING DIVISION

SCALE: 1 INCH = 40 CHAINS (1/2 MILE)

DR. *K.I.* PLAN NO. **M. 1470**  
 DATE *DEC. '71.*

ONTARIO  
 MINISTRY OF NATURAL RESOURCES  
 SURVEYS AND MAPPING BRANCH

DAUMONT TP. M. 1469

Long 83° 49' 12" Approx.  
 Lat. 46° 52' 56"

*Replaced by mylan Sept. 4/84*

**G.3170**