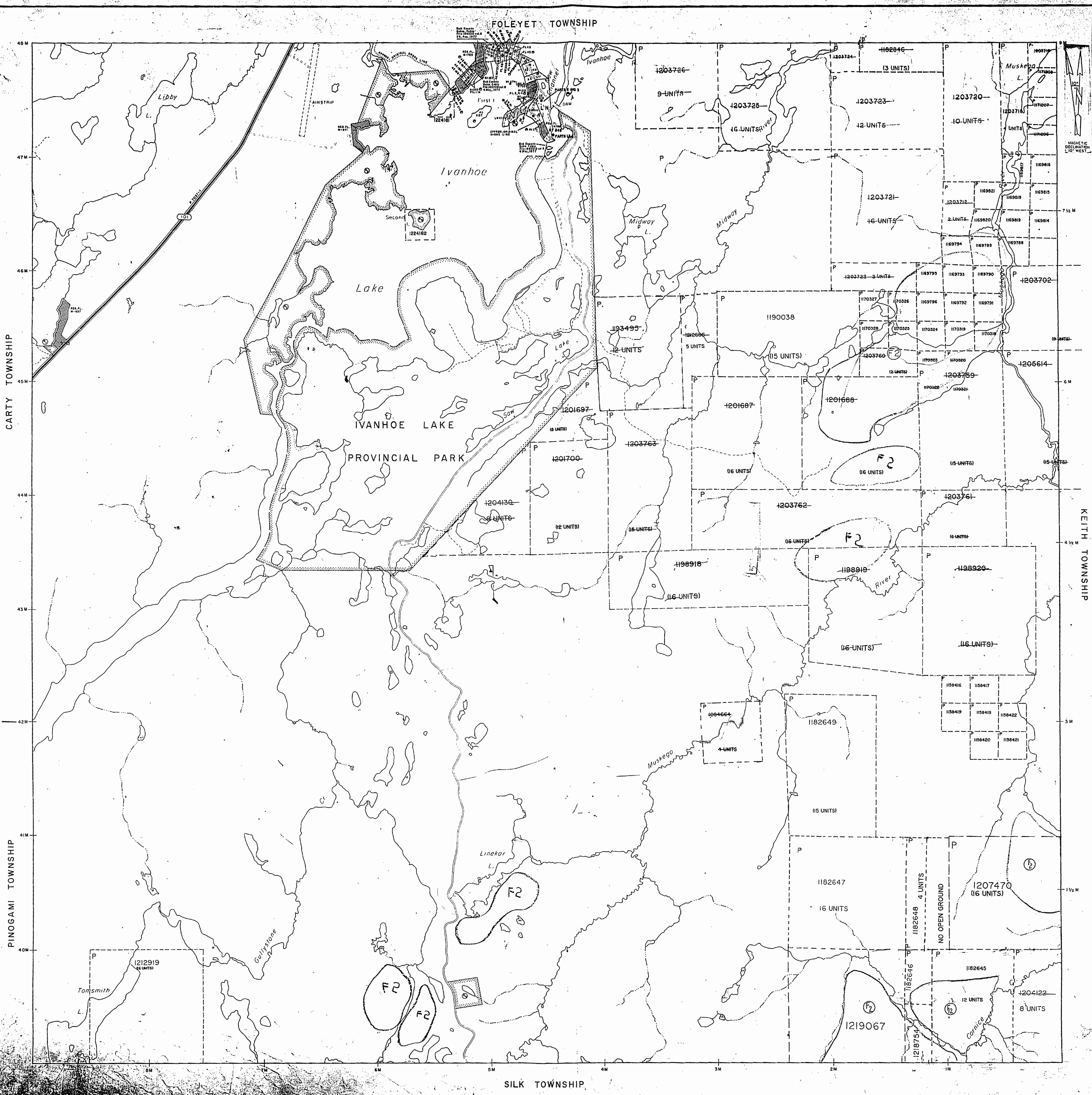


REFERENCES

AREAS WITHDRAWN FROM DISPOSITION

Area	Date	Dimensions	File
1. A.O. MINING RIGHTS ONLY	27/7/70	M.A.R.	183003
2. A.O. SURFACE RIGHTS ONLY	30/7/71	M.A.R.	183002
3. A.O. MINING AND SURFACE RIGHTS	19/2/72	M.A.R.	183002-4
	20/7/72	M.A.R.	183002
	27/7/77	S.R.O.	183003

THE INFORMATION SHOWN ON THIS MAP HAS BEEN COMPILED FROM VARIOUS SOURCES AND ACCURACY IS NOT GUARANTEED. THOSE WISHING TO STAKE MINING CLAIMS SHOULD CONSULT WITH THE MINING RECORDER, MINISTRY OF NORTHERN DEVELOPMENT AND MINES, FOR ADDITIONAL INFORMATION ON THE STATUS OF THE LANDS SHOWN HEREON.



LEGEND

HIGHWAY AND ROUTE No.	OTHER ROADS
TRAILS	SURVEYED LINES
TOWNSHIPS, BASE LINES, ETC.	LOTS, MINING CLAIMS, PARCELS, ETC.
UNSURVEYED LINES:	LOT LINES
PARCEL BOUNDARY	MINING CLAIMS ETC.
RAILWAY AND RIGHT OF WAY	UTILITY LINES
NON PERENNIAL STREAM	FLOODING OR FLOODING RIGHTS
SUBDIVISION OR COMPOSITE PLAN	RESERVATIONS
ORIGINAL SHORELINE	MARSH OR MUSKEG
MINES	TRaverse MONUMENT

DISPOSITION OF CROWN LANDS

TYPE OF DOCUMENT	SYMBOL
PATENT, SURFACE & MINING RIGHTS	○
" SURFACE RIGHTS ONLY	○
" MINING RIGHTS ONLY	○
LEASE, SURFACE & MINING RIGHTS	○
" SURFACE RIGHTS ONLY	○
" MINING RIGHTS ONLY	○
LICENCE OF OCCUPATION	○
ORDER-IN-COUNCIL	○
RESERVATION	○
CANCELLED	○
SAND & GRAVEL	○

NOTE: MINING RIGHTS IN PARCELS PATENTED PRIOR TO MAY 8, 1912, VESTED IN ORIGINAL PATENTEE BY THE PUBLIC LANDS ACT, R.S.O. 1910, CHAP. 300, SEC. 183 SUBSECTION 1.

SCALE 1:20 000

THIS TWP. IS SUBJECT TO FOREST ACTIVITY IN 1996. FURTHER INFORMATION ON FILE. 96/97

DATE OF ISSUE

MAY 14 1998

PROVINCIAL RECORDING OFFICE - SUDBURY

TOWNSHIP

IVANHOE

M.N.R. ADMINISTRATIVE DISTRICT

CHAPLEAU

MINING DIVISION

PORCUPINE

LAND TITLES / REGISTRY DIVISION

SUDBURY

Ministry of Natural Resources and Mines

Ministry of Northern Development

Ontario

Date: OCTOBER, 1996

Revised: OCTOBER, 1996

Drawn: G-1102

951

IVANHOE 2510

IVANHOE

District of Sudbury

Scale 40 Chains = 1 Inch

200 Res. M. 951

FOLEYET



CARTY

PINGAMI

KEITH

XII

XI

X

IX

VIII

VII

VI

V

IV

III

II

I

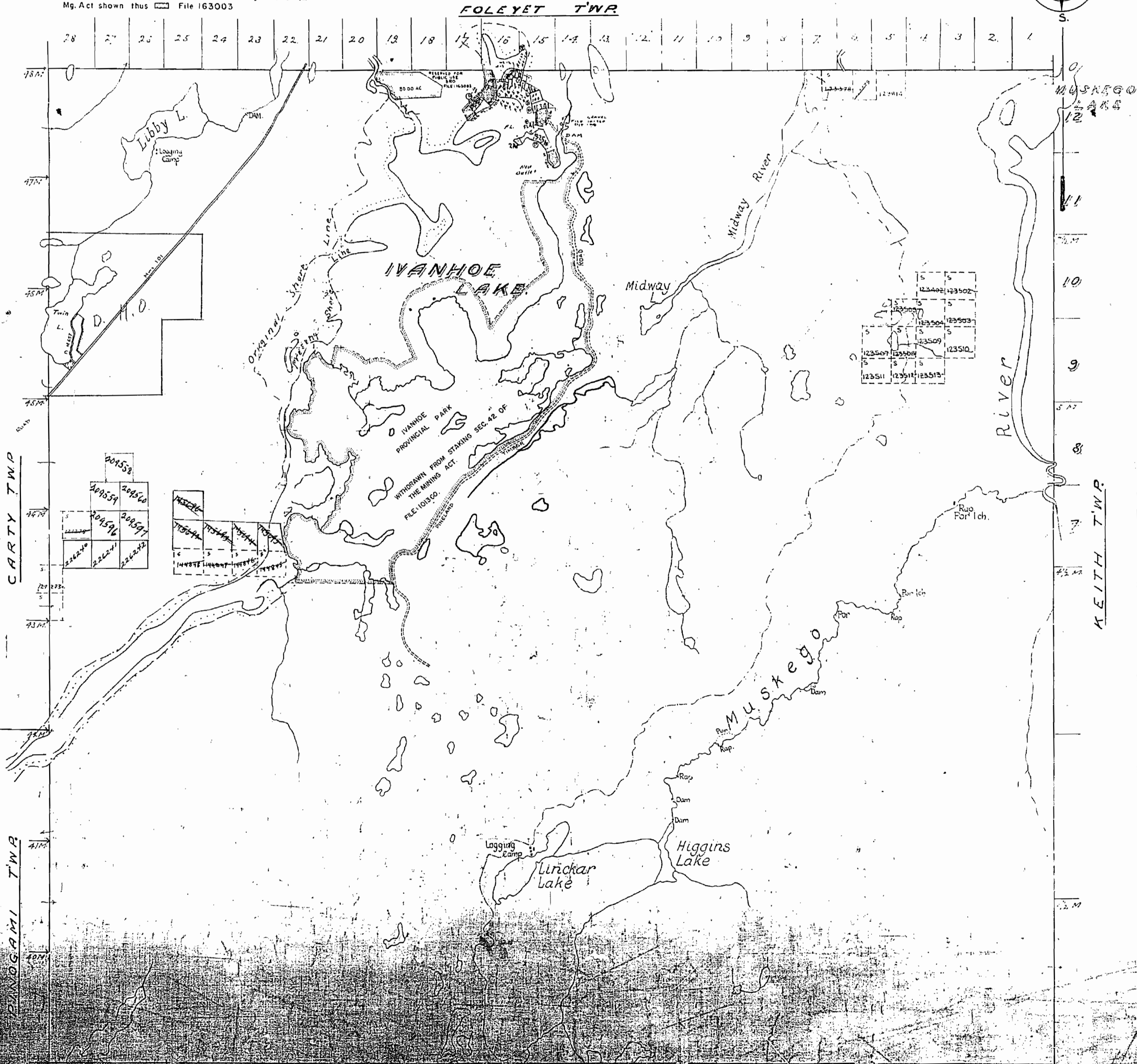
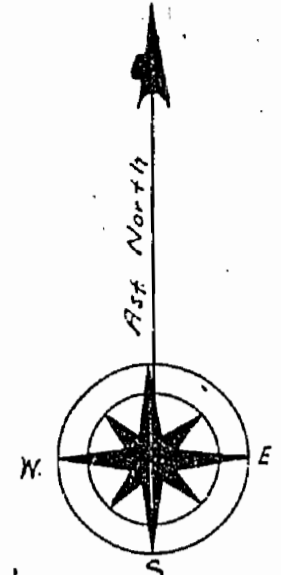
951

PLAN OF
IVANHOE TWP. m-951
SUBBURY MINING DIVISION.
DISTRICT OF SUBBURY.

NOTES:
400' Surface Rights Reservation
around all Lakes and Rivers.

Surface Rights Only withdrawn from staking Sec 3-4(d)
Mg. Act shown thus [Symbol] File 163003

Scale, 40 chains to an inch.



CARTY TWP

PINDOGAMI TWP

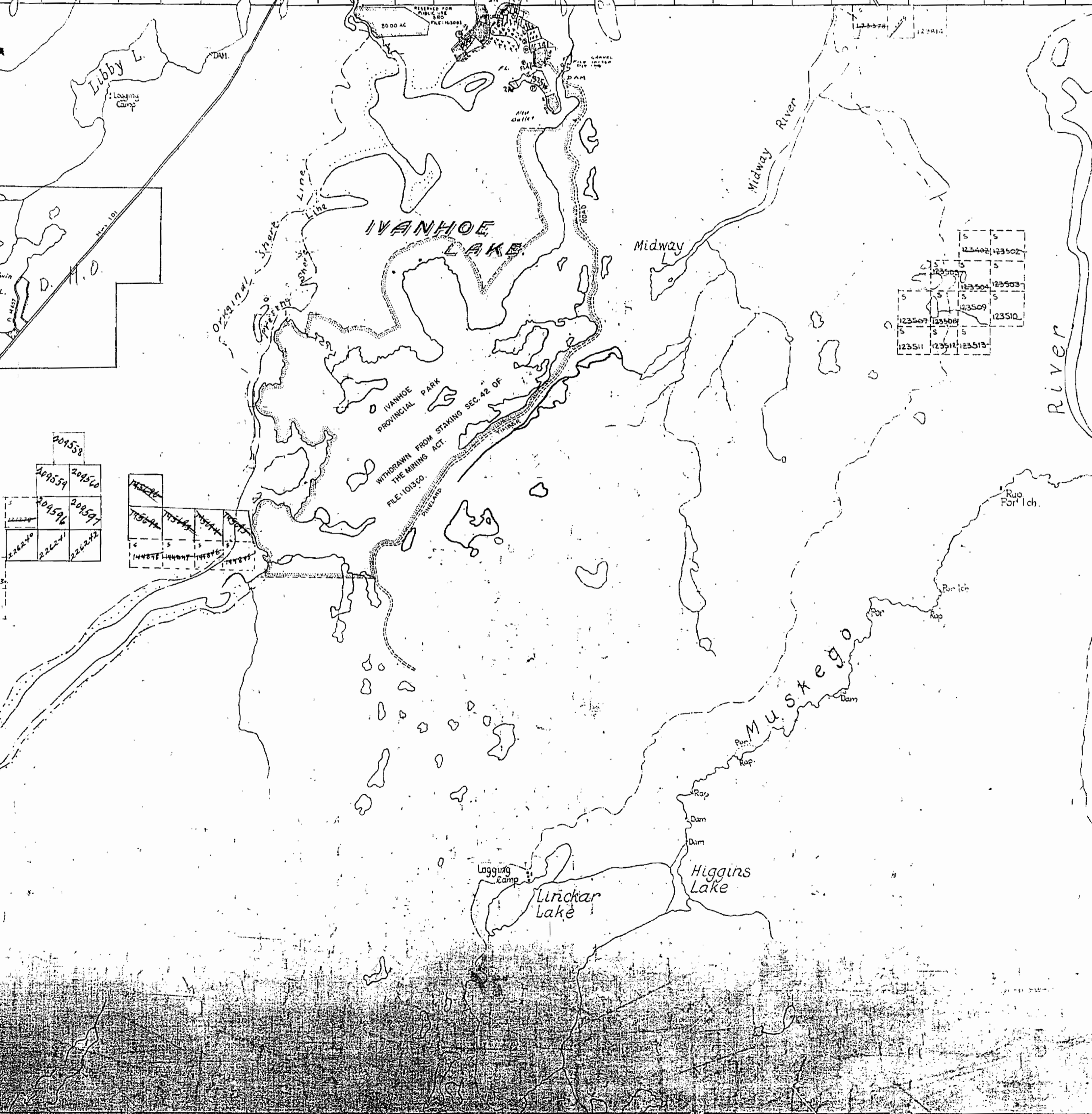
KEITH TWP

FOLEYET TWP

28 27 26 25 24 23 22 21 20 19 18 17 16 15 14 13 12 11 10 9 8 7 6 5 4 3 2 1

48 A.
47 A.
46 A.
45 A.
44 A.
43 A.
42 A.
41 A.
40 A.
39 A.
38 A.
37 A.
36 A.
35 A.
34 A.
33 A.
32 A.
31 A.
30 A.
29 A.
28 A.
27 A.
26 A.
25 A.
24 A.
23 A.
22 A.
21 A.
20 A.
19 A.
18 A.
17 A.
16 A.
15 A.
14 A.
13 A.
12 A.
11 A.
10 A.
9 A.
8 A.
7 A.
6 A.
5 A.
4 A.
3 A.
2 A.
1 A.

12
11
10
9
8
7
6
5
4
3
2
1



951

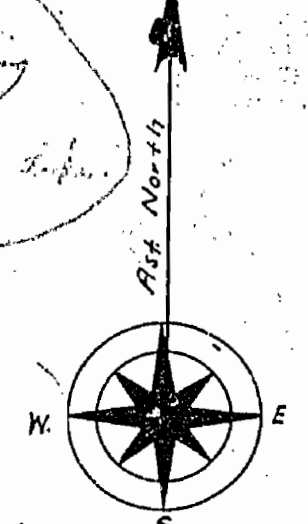
PLAN OF *old* IVANHOE TWP. SUBBURY MINING DIVISION. DISTRICT OF SUBBURY.

Scale, 40 chains to an inch.

*outlined in Red
not open to staking
P. Park
E. side of the lake.*

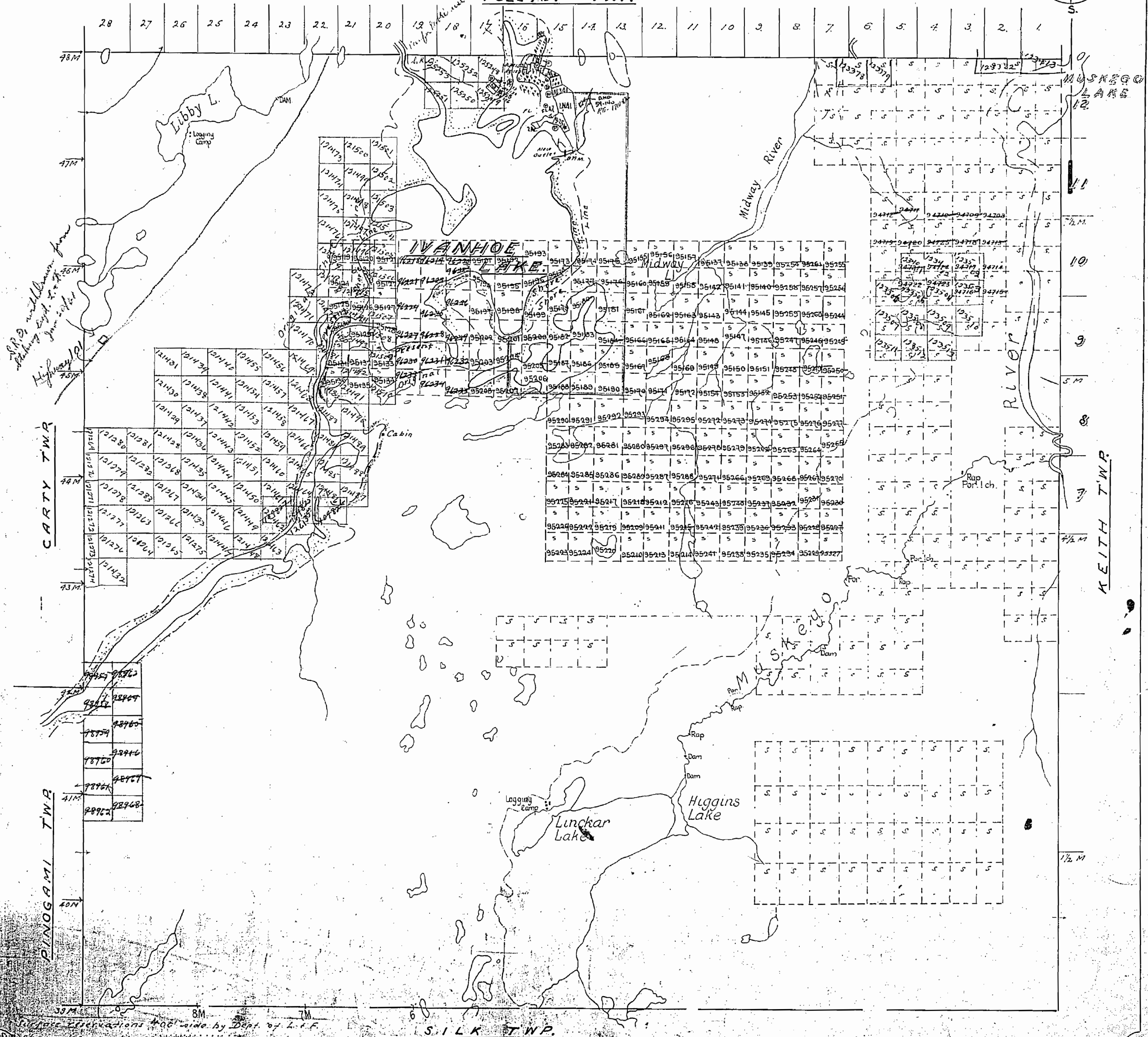
*400' red
M-951*

*See section
127th July 1877*



FOLEYET TWP.

28 27 26 25 24 23 22 21 20 19 18 17 16 15 14 13 12 11 10 9 8 7 6 5 4 3 2 1



*Highway
45m*

CARTY TWP.

PINGOGAMI TWP.

KEITH TWP.

SILK TWP.

These observations made by Dept. of L. & F.

IVANHOE TWP. M. 951

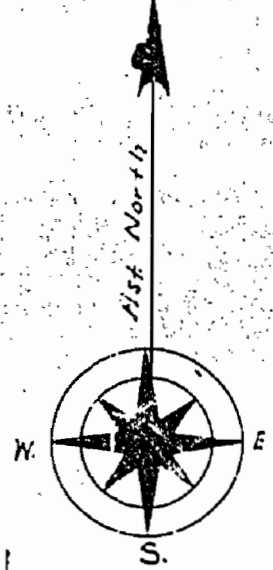
951

PLAN OF IVANHOE TWP. SUBBURY MINING DIVISION. DISTRICT OF SUBBURY.

M-951

400. Feet

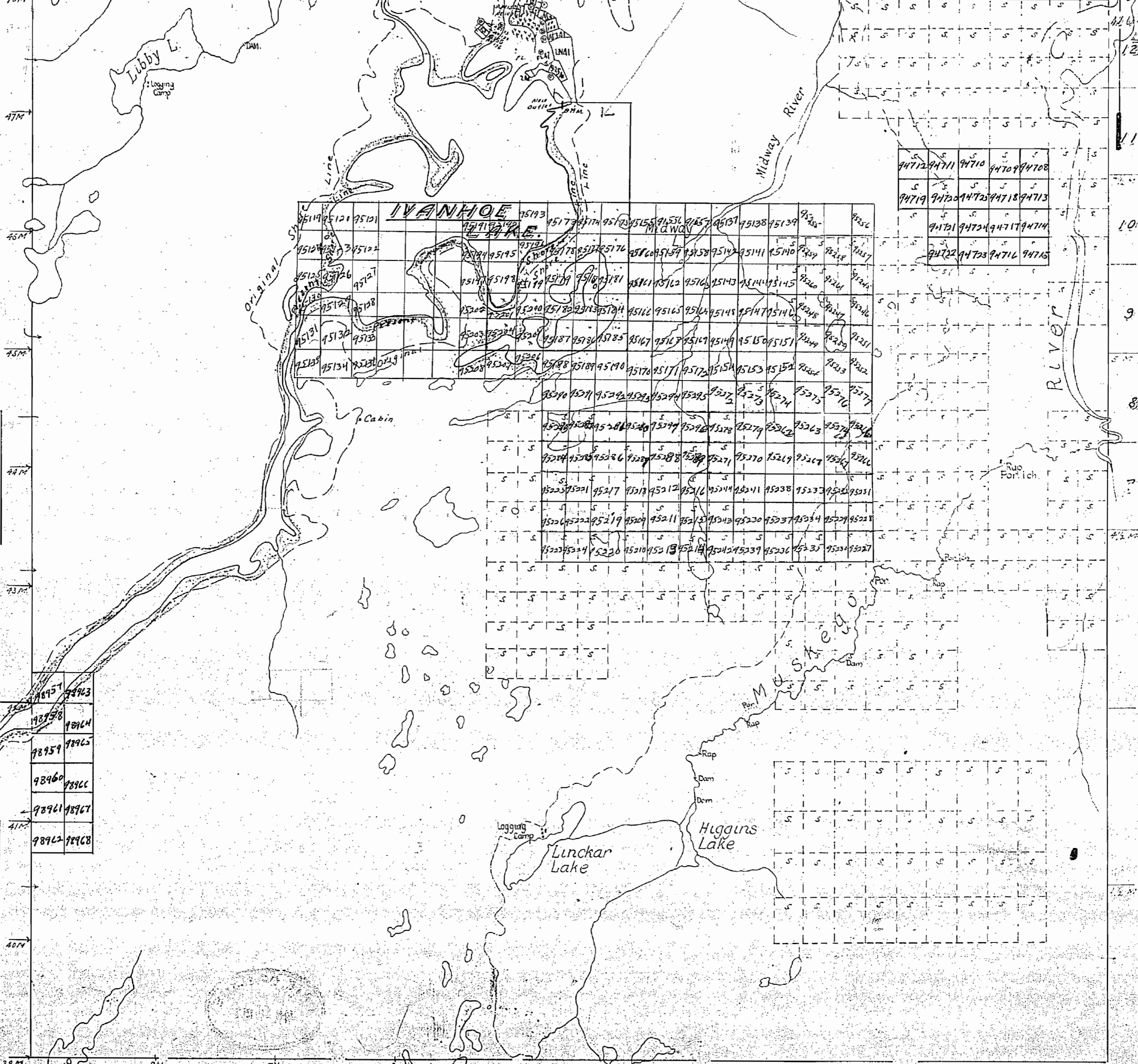
Scale, 40 chains to an inch.



FOLEYET TWP

Provincial Park area
appl. to records accepted as M.R.O.

28 27 26 25 24 23 22 21 20 19 18 17 16 15 14 13 12 11 10 9 8 7 6 5 4 3 2 1



94712	94711	94710	94709	94708
94719	94720	94721	94718	94713
94721	94722	94717	94714	
94722	94723	94716	94715	

CARTY TWP

PINOGAMI TWP

KEITH TWP

SILK TWP

Surface reservations 200' wide by Dept. of L. & F.
shown hereon this map.

951

PLAN OF IVANHOE TWP. SUDBURY MINING DIVISION. DISTRICT OF SUDBURY.

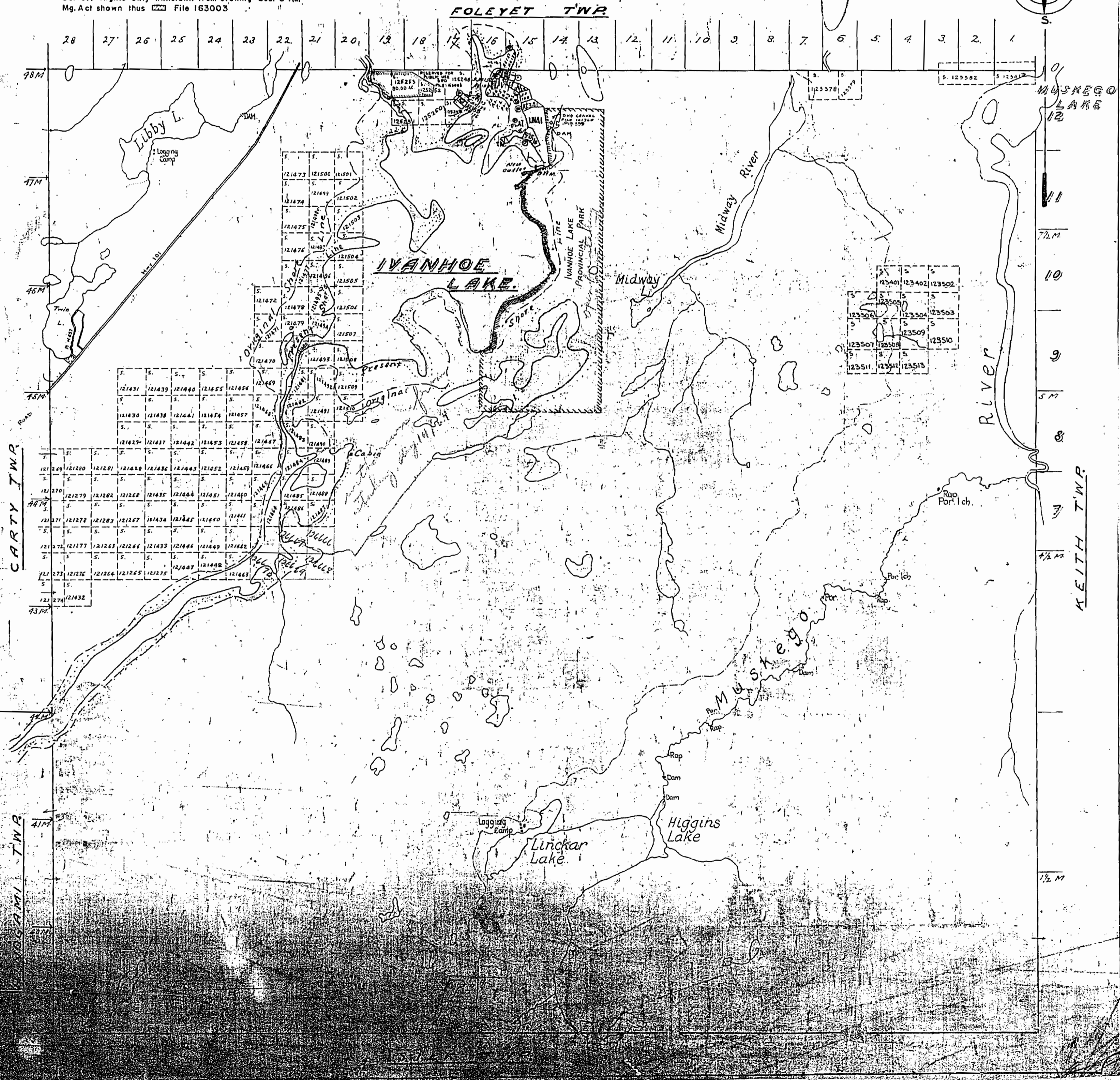
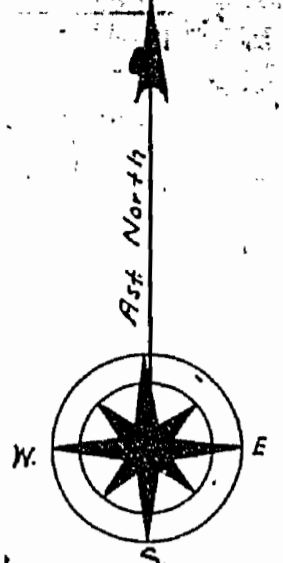
M-951
[Handwritten signature]

NOTES:

400' Surface Rights Reservation
around all Lakes and Rivers.

Surface Rights Only withdrawn from staking Sec. 34(d)
Mg. Act shown thus  File 163003

Scale, 40 chains to an inch.



951

IVANHOE TWP.

SUDBURY MINING DIVISION.
DISTRICT OF SUDBURY.

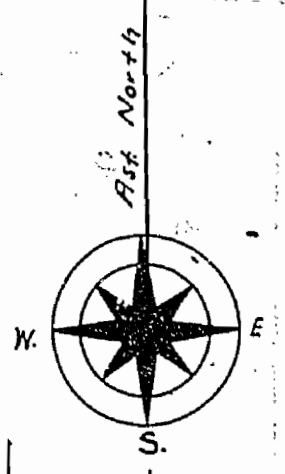
M-951

NOTES:

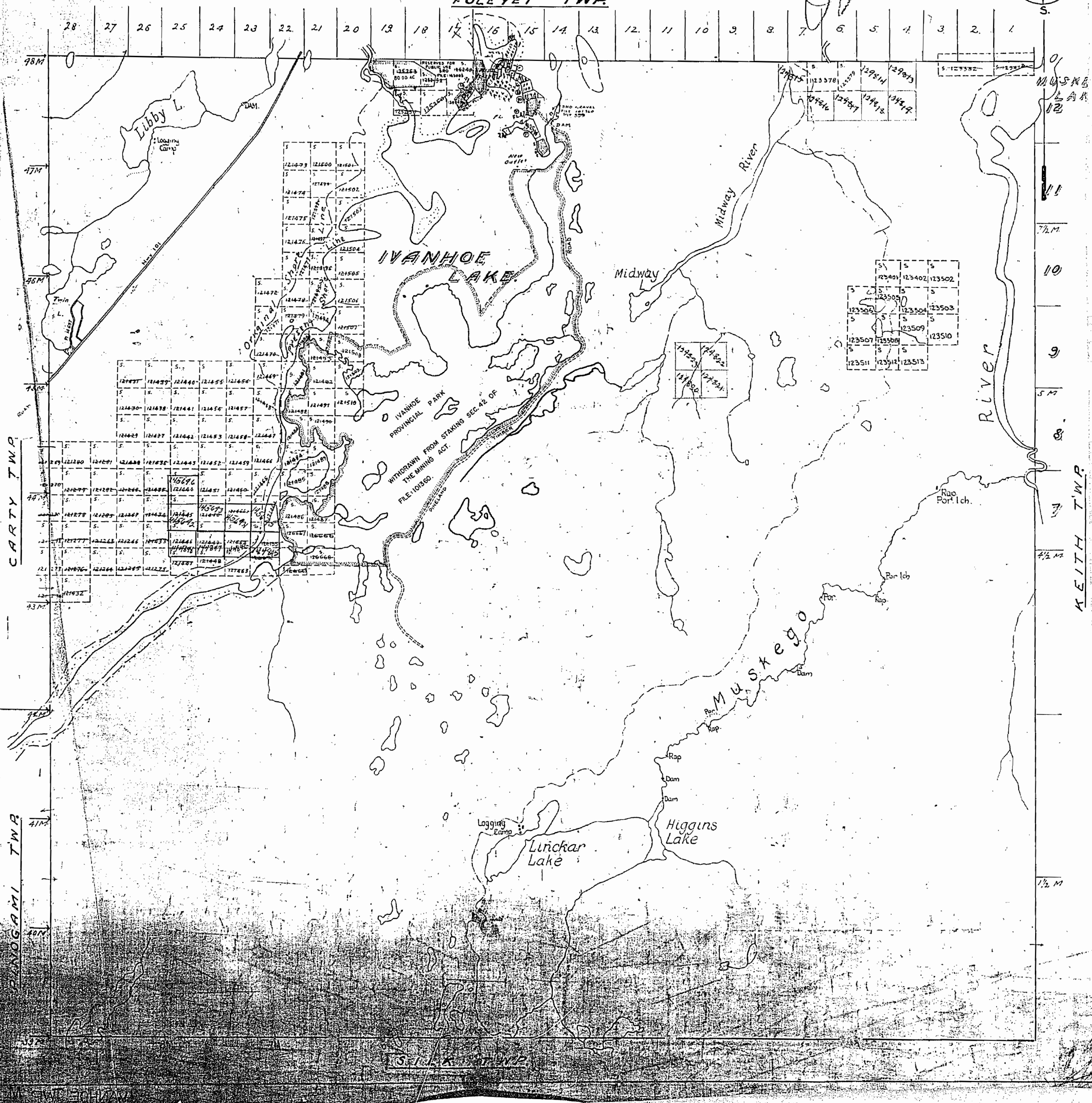
400' Surface Rights Reservation
around all Lakes and Rivers.

Surface Rights Only withdrawn from staking Sec. 34(d)
Mg. Act shown thus  File 163003

Scale, 40 chains to an inch.



FOLEYET TWP.



CARY TWP.

PLANOGRAMI TWP.

KEITH TWP.

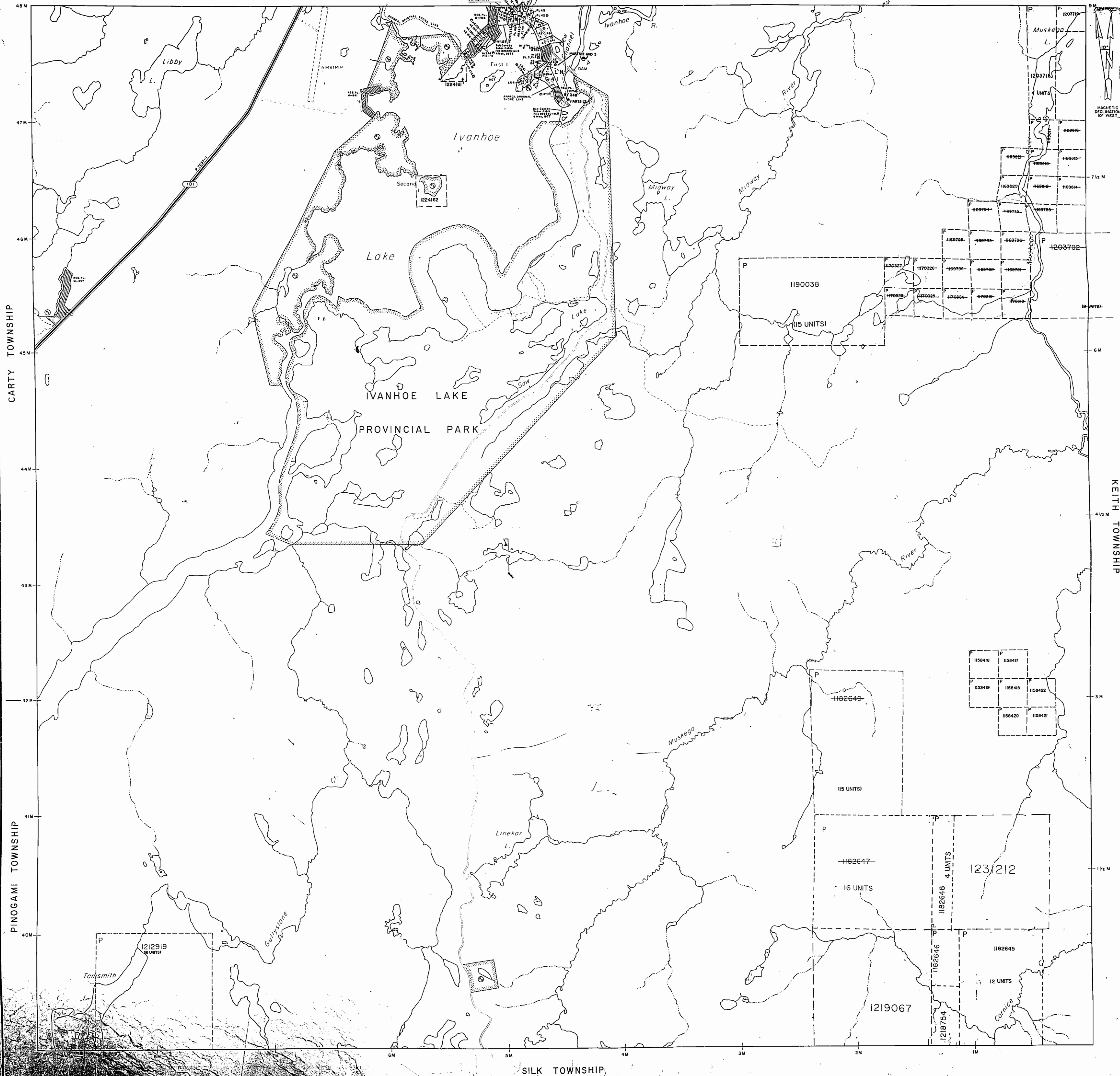
S. 34(d) M. G. ACT.

REFERENCES

AREAS WITHDRAWN FROM DISPOSITION

Order No.	Date	Description	File
25/17/70		M.R.D. MINING RIGHTS ONLY	163003
30/1/71	M.B.B.	SURFACE RIGHTS ONLY	163002
15/2/72	M.B.B.	MINING AND SURFACE RIGHTS	163002-163
20/2/72	M.B.B.		163002
26/7/77	S.A.S.		163003

FOLEYET TOWNSHIP



LEGEND

- HIGHWAY AND ROUTE No.
- OTHER ROADS
- TRAILS
- SURVEYED LINES: TOWNSHIP BASE LINES, ETC.
- LOTS, MINING CLAIMS, PARCELS, ETC.
- UNSURVEYED LINES
- LOT LINES
- PARCEL BOUNDARY
- MINING CLAIMS ETC.
- RAILWAY AND RIGHT OF WAY
- UTILITY LINES
- NON-PERENNIAL STREAM
- FLOODING OR FLOODING RIGHTS
- SUBDIVISION OR COMPOSITE PLAN
- RESERVATIONS
- ORIGINAL SHORELINE
- MARSH OR MUSKEG
- MINES
- TRAVERSE MONUMENT

DISPOSITION OF CROWN LANDS

TYPE OF DOCUMENT	SYMBOL
PATENT, SURFACE & MINING RIGHTS	○
" SURFACE RIGHTS ONLY	○
" MINING RIGHTS ONLY	○
LEASE, SURFACE & MINING RIGHTS	○
" SURFACE RIGHTS ONLY	○
" MINING RIGHTS ONLY	○
LICENCE OF OCCUPATION	○
ORDER-IN-COUNCIL	○
RESERVATION	○
CANCELLED	○
SAND & GRAVEL	○

NOTE: MINING RIGHTS IN PARCELS PATENTED PRIOR TO MAY 6, 1953, VESTED IN ORIGINAL PATENTEES BY THE PUBLIC LANDS ACT, R.S.O. 1970, CHAP. 380, SEC. 42, SUBSEC. 1.

SCALE 1:20 000

THIS TWP. IS SUBJECT TO FOREST ACTIVITY IN 1995/96. FURTHER INFORMATION ON FILE. 96/97

TOWNSHIP
IVANHOE
M.N.R. ADMINISTRATIVE DISTRICT
CHAPLEAU
MINING DIVISION
PORCUPINE
LAND TITLES / REGISTRY DIVISION
SUDBURY

Ministry of Natural Resources and Mines
Ontario

Date: OCTOBER, 1996
ESTIMATED 20% BASE BY S.C.
CHECKED BY A.S.
Number: **G-1102**

THE INFORMATION THAT APPEARS ON THIS MAP HAS BEEN COMPILED FROM VARIOUS SOURCES. NO ACCURACY IS NOT GUARANTEED. THOSE WISHING TO STAKE MINING CLAIMS SHOULD CONSULT WITH THE MINING REGISTRY DIVISION, MINISTRY OF NORTHERN DEVELOPMENT AND MINES FOR ADDITIONAL INFORMATION ON THE STATUS OF THE LANDS SHOWN HEREON.

951

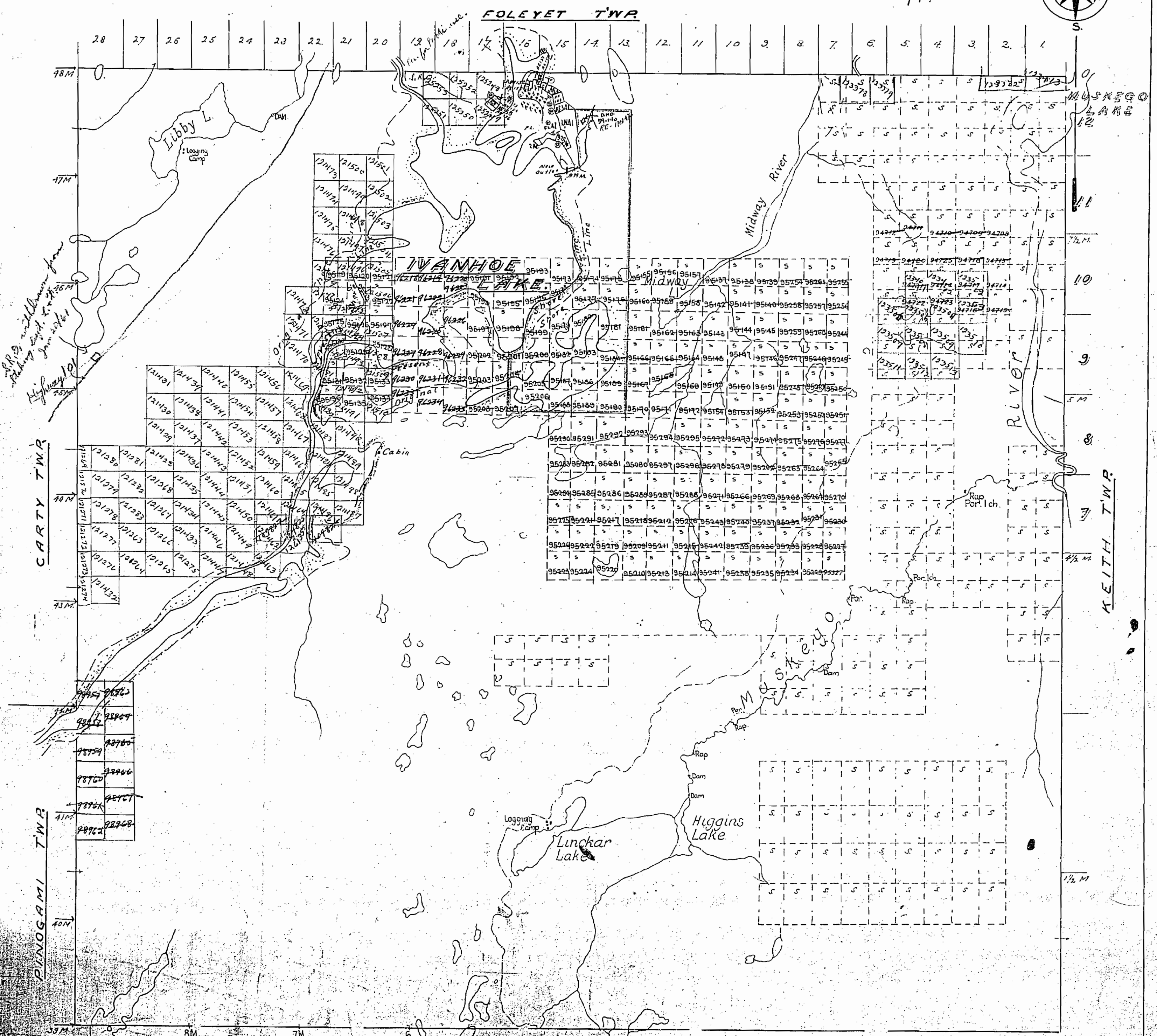
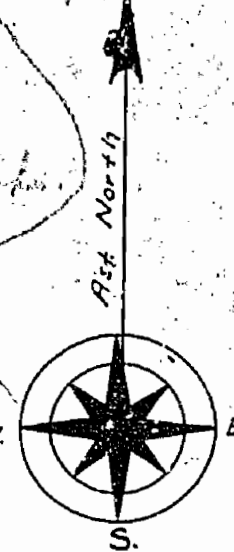
office

PLAN OF *J. Ed* IVANHOE TWP. SUDBURY MINING DIVISION. DISTRICT OF SUDBURY.

*outlined in Red
not going to staking
P. Park
E. side of the lake*

Scale, 40 chains to an inch.

*400' res.
M-951*



Map prepared by Dept. of L. & F.

S. ILK TWP.

951

PLAN OF IVANHOE TWP. SUDBURY MINING DIVISION. DISTRICT OF SUDBURY.

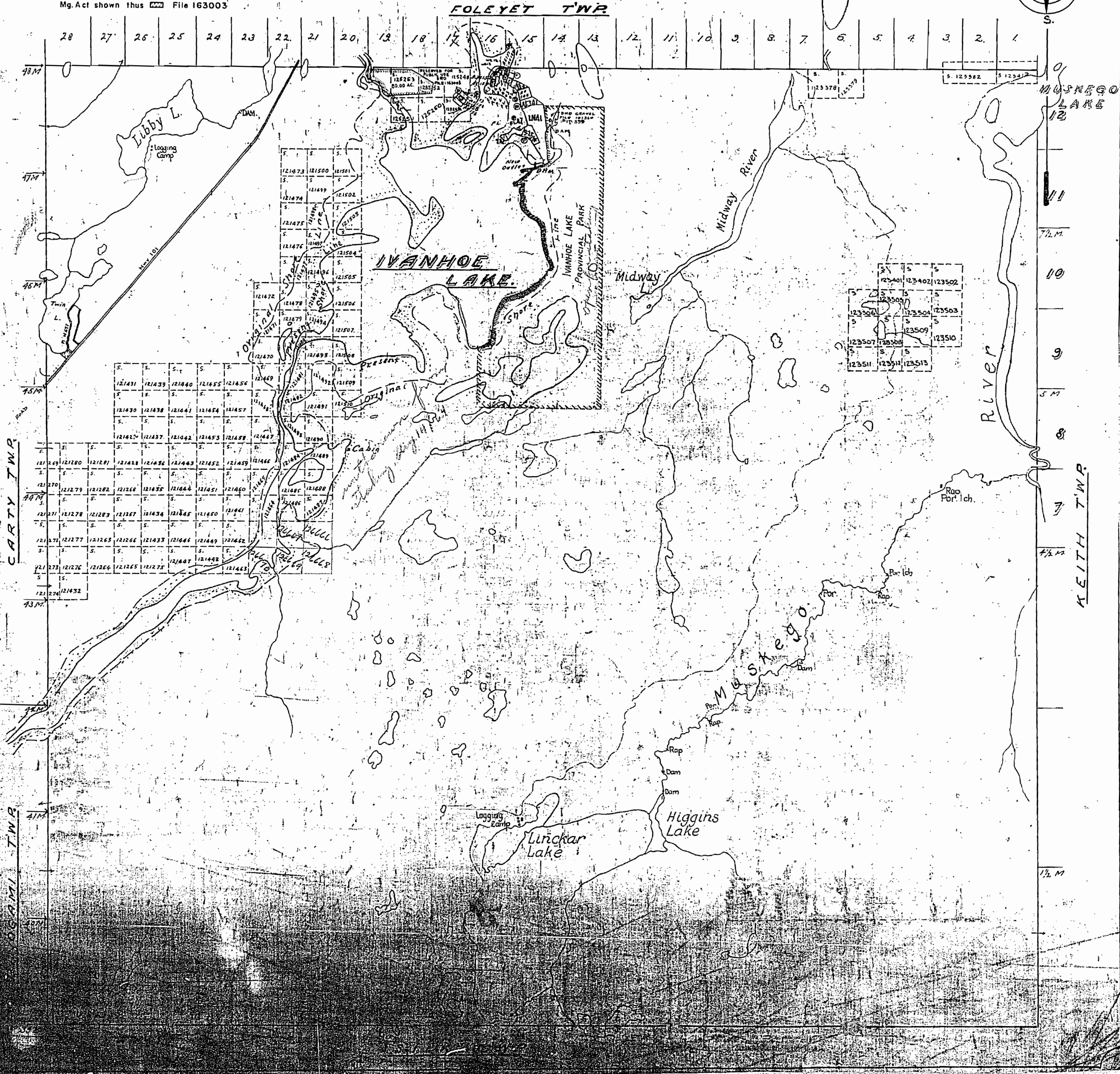
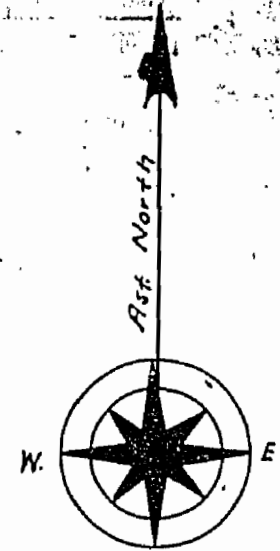
M-951
JD

NOTES:

400' Surface Rights Reservation
around all Lakes and Rivers.

Surface Rights Only withdrawn from staking Sec. 34(d)
Mg. Act shown thus  File 163003

Scale, 40 chains to an inch.



951

IVANHOE TWP.

SUDBURY MINING DIVISION.

DISTRICT OF SUDBURY.

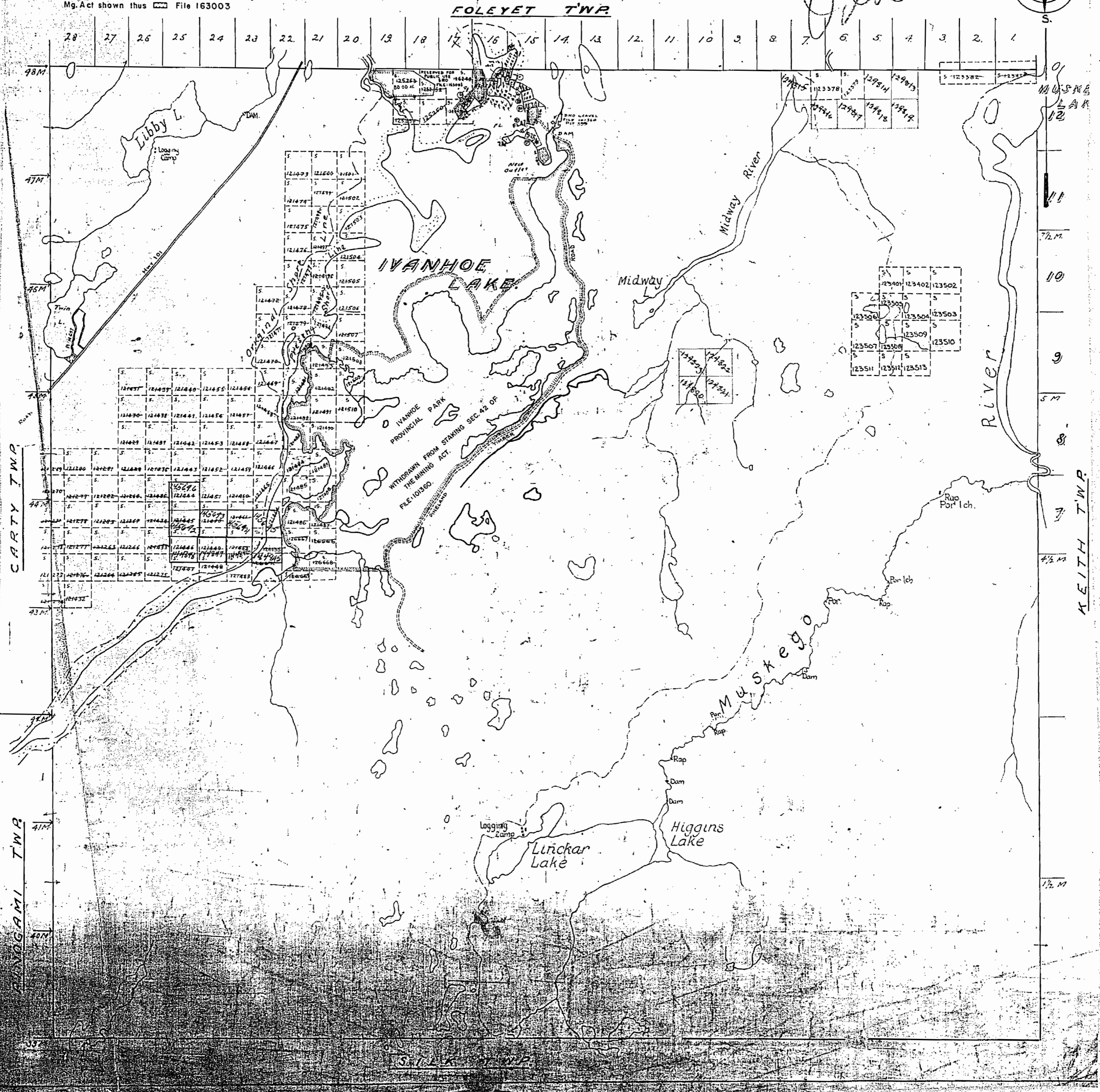
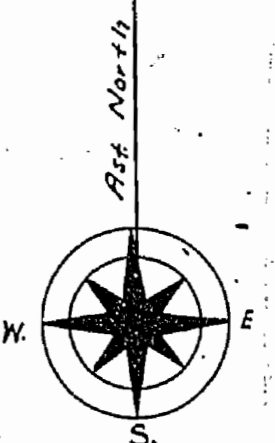
M-951

NOTES:

400' Surface Rights Reservation
around all Lakes and Rivers.

Surface Rights Only withdrawn from staking Sec. 34(a)
Mg. Act shown thus  File 163003

Scale, 40 chains to an inch.



CARTY TWP.

MUSKOGEE TWP.

KEITH TWP.

SUDBURY TWP.

951

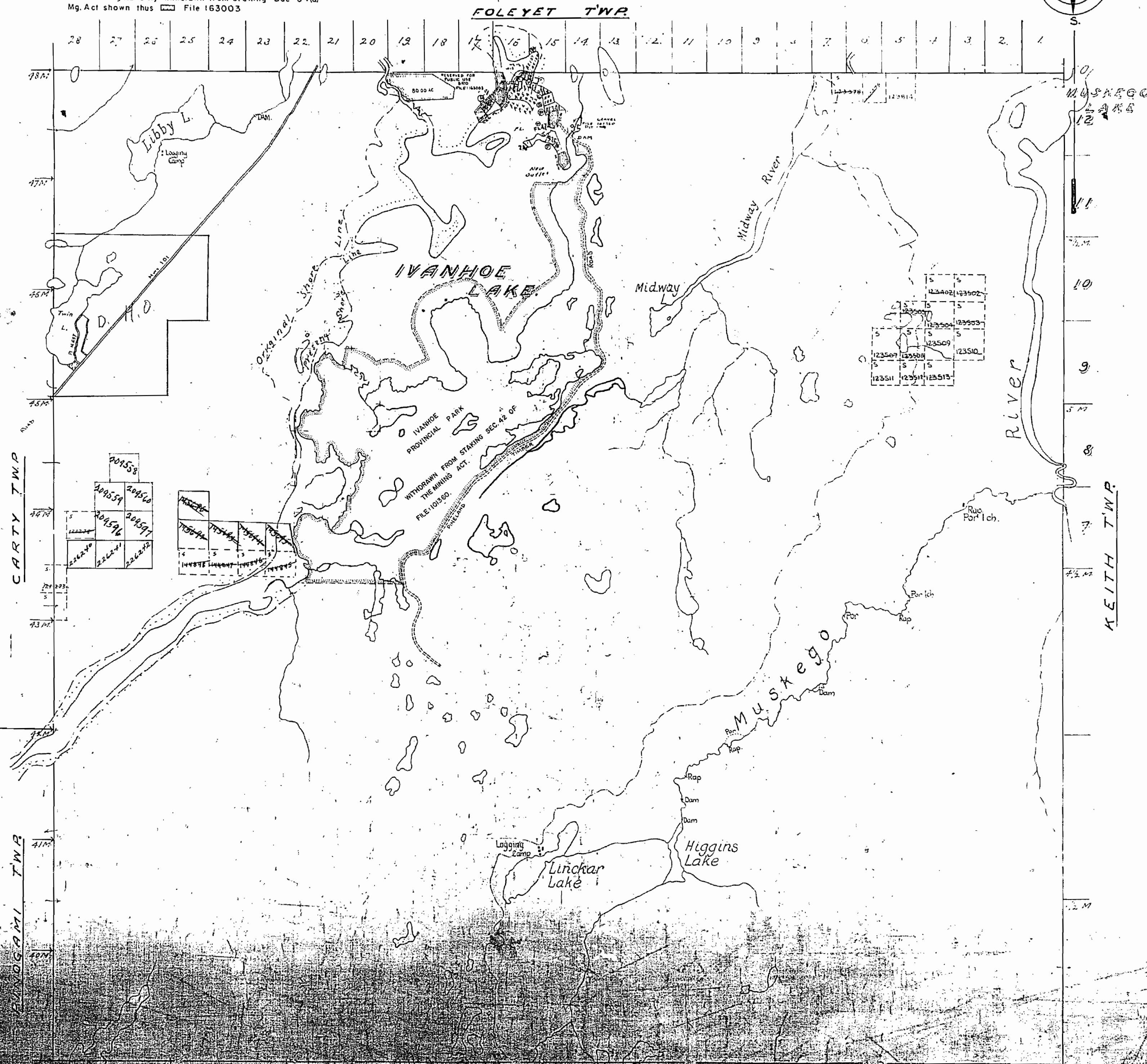
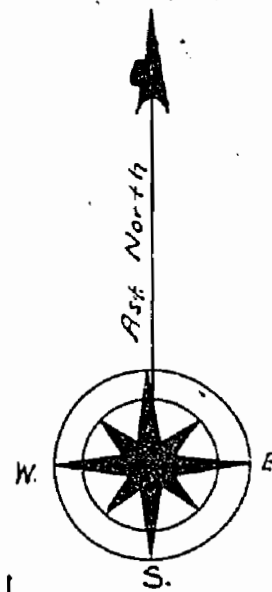
PLAN OF
IVANHOE TWP. M-951
SUDBURY MINING DIVISION.
DISTRICT OF SUDBURY.

NOTES:

400' Surface Rights Reservation
around all Lakes and Rivers.

Surface Rights Only withdrawn from staking Sec 34(d)
Mg. Act shown thus  File 163003

Scale, 40 chains to an inch.



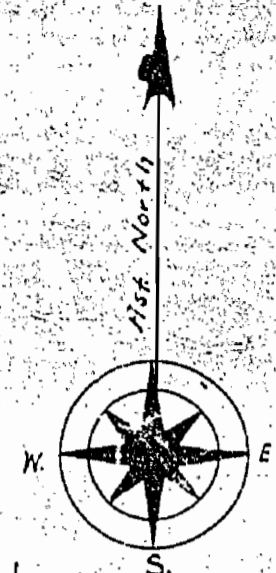
951

PLAN OF IVANHOE TWP. SUBBURY MINING DIVISION. DISTRICT OF SUBBURY.

M-951

400 Feet

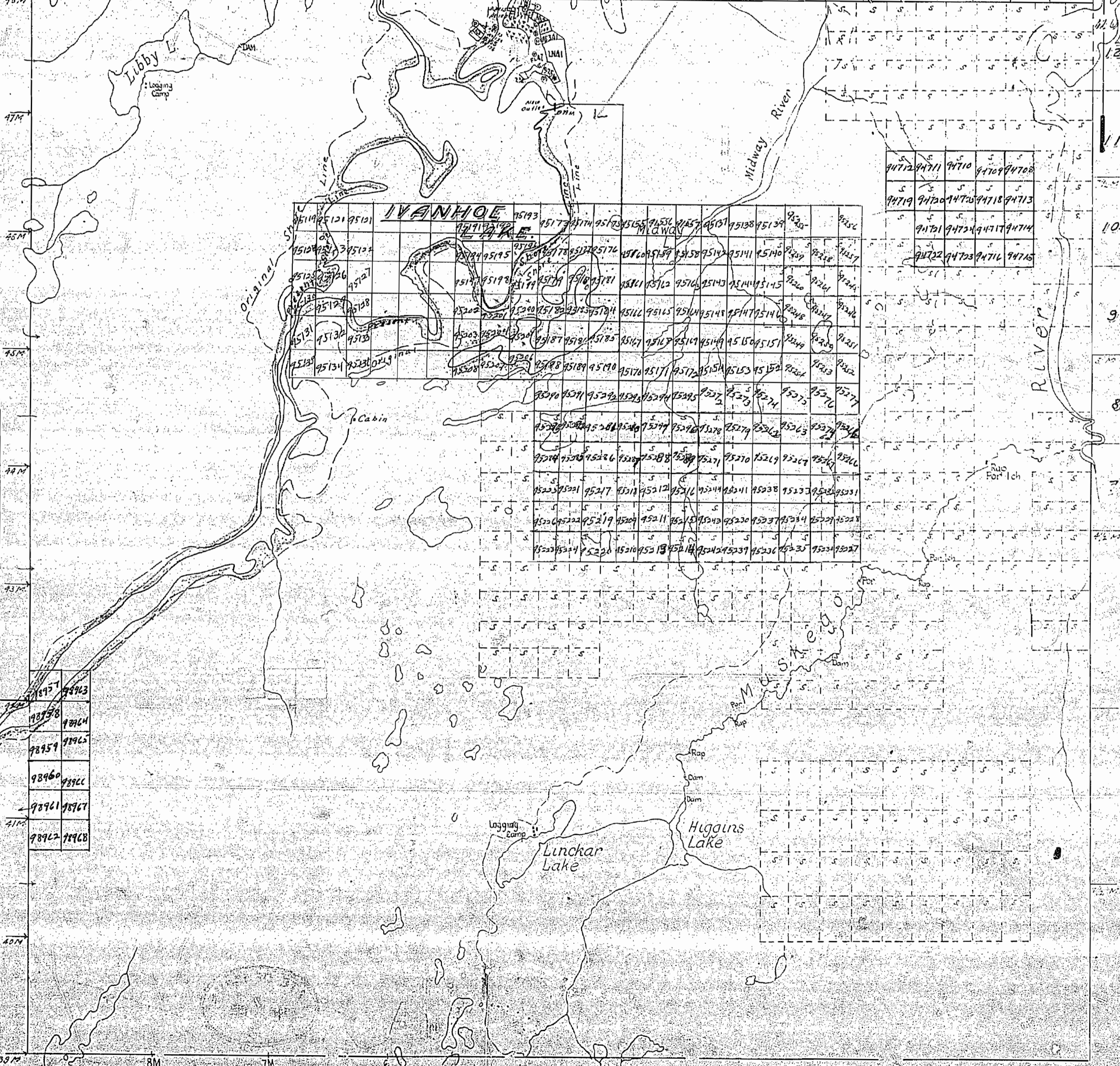
Scale, 40 chains to an inch.



FOLEYET TWP.

Provincial Park area
appl. to records accepted as M.R.O.

28 27 26 25 24 23 22 21 20 19 18 17 16 15 14 13 12 11 10 9 8 7 6 5 4 3 2 1



95114	95121	95129	95193	95177	95174	95178	95155	95152	95157	95151	95138	95139	95202	95201	95204
95104	95112	95122	95194	95179	95175	95176	95156	95153	95158	95154	95141	95140	95203	95205	95207
95123	95127	95127	95195	95180	95178	95177	95157	95154	95159	95155	95142	95141	95206	95208	95210
95125	95129	95129	95196	95181	95179	95178	95158	95155	95160	95156	95143	95142	95207	95209	95211
95126	95130	95130	95197	95182	95180	95179	95159	95156	95161	95157	95144	95143	95208	95210	95212
95127	95131	95131	95198	95183	95181	95180	95160	95157	95162	95158	95145	95144	95209	95211	95213
95128	95132	95132	95199	95184	95182	95181	95161	95158	95163	95159	95146	95145	95210	95212	95214
95129	95133	95133	95200	95185	95183	95182	95162	95159	95164	95160	95147	95146	95211	95213	95215
95130	95134	95134	95201	95186	95184	95183	95163	95160	95165	95161	95148	95147	95212	95214	95216
95131	95135	95135	95202	95187	95185	95184	95164	95161	95166	95162	95149	95148	95213	95215	95217
95132	95136	95136	95203	95188	95186	95185	95165	95162	95167	95163	95150	95149	95214	95216	95218
95133	95137	95137	95204	95189	95187	95186	95166	95163	95168	95164	95151	95150	95215	95217	95219
95134	95138	95138	95205	95190	95188	95187	95167	95164	95169	95165	95152	95151	95216	95218	95220
95135	95139	95139	95206	95191	95189	95188	95168	95165	95170	95166	95153	95152	95217	95219	95221
95136	95140	95140	95207	95192	95190	95189	95169	95166	95171	95167	95154	95153	95218	95220	95222
95137	95141	95141	95208	95193	95191	95190	95170	95167	95172	95168	95155	95154	95219	95221	95223
95138	95142	95142	95209	95194	95192	95191	95171	95168	95173	95169	95156	95155	95220	95222	95224
95139	95143	95143	95210	95195	95193	95192	95172	95169	95174	95170	95157	95156	95221	95223	95225
95140	95144	95144	95211	95196	95194	95193	95173	95170	95175	95171	95158	95157	95222	95224	95226
95141	95145	95145	95212	95197	95195	95194	95174	95171	95176	95172	95159	95158	95223	95225	95227
95142	95146	95146	95213	95198	95196	95195	95175	95172	95177	95173	95160	95159	95224	95226	95228
95143	95147	95147	95214	95199	95197	95196	95176	95173	95178	95174	95161	95160	95225	95227	95229
95144	95148	95148	95215	95200	95198	95197	95177	95174	95179	95175	95162	95161	95226	95228	95230
95145	95149	95149	95216	95201	95199	95198	95178	95175	95180	95176	95163	95162	95227	95229	95231
95146	95150	95150	95217	95202	95200	95199	95179	95176	95181	95177	95164	95163	95228	95230	95232
95147	95151	95151	95218	95203	95201	95200	95180	95177	95182	95178	95165	95164	95229	95231	95233
95148	95152	95152	95219	95204	95202	95201	95181	95178	95183	95179	95166	95165	95230	95232	95234
95149	95153	95153	95220	95205	95203	95202	95182	95179	95184	95180	95167	95166	95231	95233	95235
95150	95154	95154	95221	95206	95204	95203	95183	95180	95185	95181	95168	95167	95232	95234	95236
95151	95155	95155	95222	95207	95205	95204	95184	95181	95186	95182	95169	95168	95233	95235	95237
95152	95156	95156	95223	95208	95206	95205	95185	95182	95187	95183	95170	95169	95234	95236	95238
95153	95157	95157	95224	95209	95207	95206	95186	95183	95188	95184	95171	95170	95235	95237	95239
95154	95158	95158	95225	95210	95208	95207	95187	95184	95189	95185	95172	95171	95236	95238	95240
95155	95159	95159	95226	95211	95209	95208	95188	95185	95190	95186	95173	95172	95237	95239	95241
95156	95160	95160	95227	95212	95210	95209	95189	95186	95191	95187	95174	95173	95238	95240	95242
95157	95161	95161	95228	95213	95211	95210	95190	95187	95192	95188	95175	95174	95239	95241	95243
95158	95162	95162	95229	95214	95212	95211	95191	95188	95193	95189	95176	95175	95240	95242	95244
95159	95163	95163	95230	95215	95213	95212	95192	95189	95194	95190	95177	95176	95241	95243	95245
95160	95164	95164	95231	95216	95214	95213	95193	95190	95195	95191	95178	95177	95242	95244	95246
95161	95165	95165	95232	95217	95215	95214	95194	95191	95196	95192	95179	95178	95243	95245	95247
95162	95166	95166	95233	95218	95216	95215	95195	95192	95197	95193	95180	95179	95244	95246	95248
95163	95167	95167	95234	95219	95217	95216	95196	95193	95198	95194	95181	95180	95245	95247	95249
95164	95168	95168	95235	95220	95218	95217	95197	95194	95199	95195	95182	95181	95246	95248	95250
95165	95169	95169	95236	95221	95219	95218	95198	95195	95200	95196	95183	95182	95247	95249	95251
95166	95170	95170	95237	95222	95220	95219	95199	95196	95201	95197	95184	95183	95248	95250	95252
95167	95171	95171	95238	95223	95221	95220	95200	95197	95202	95198	95185	95184	95249	95251	95253
95168	95172	95172	95239	95224	95222	95221	95201	95198	95203	95199	95186	95185	95250	95252	95254
95169	95173	95173	95240	95225	95223	95222	95202	95199	95204	95200	95187	95186	95251	95253	95255
95170	95174	95174	95241	95226	95224	95223	95203	95200	95205	95201	95188	95187	95252	95254	95256
95171	95175	95175	95242	95227	95225	95224	95204	95201	95206	95202	95189	95188	95253	95255	95257
95172	95176	95176	95243	95228	95226	95225	95205	95202	95207	95203	95190	95189	95254	95256	95258
95173	95177	95177	95244	95229	95227	95226	95206	95203	95208	95204	95191	95190	95255	95257	95259
95174	95178	95178	95245	95230	95228	95227	95207	95204	95209	95205	95192	95191	95256	95258	95260
95175	95179	95179	95246	95231	95229	95228	95208	95205	95210	95206	95193	95192	95257	95259	95261
95176	95180	95180	95247	95232	95230	95229	95209	95206	95211	95207	95194	95193	95258	95260	95262
95177	95181	95181	95248	95233	95231	95230	95210	95207	95212	95208	95195	95194	95259	95261	95263
95178	95182	95182	95249	95234	95232	95231	95211	95208	95213	95209	95196	95195	95260	95262	95264
95179	95183	95183	95250	95235	95233	95232	95212	95209	95214	95210	95197	95196	95261	95263	95265
95180	95184	95184	95251	95236	95234	95233	95213	95210	95215	95211	95198	95197	95262	95264	95266
95181	95185	95185	95252	95237	95235	95234	95214	95211	95216	95212	95199	95198	95263	95265	95267
95182	95186	95186	95253	95238	95236	95235	95215	95212	95217	95213	95200	95199	95264	95266	95268
95183	95187	95187	95254	95239	95237	95236	95216	95213	95218	95214	95201	95200	95265	95267	95269
95184	95188	95188	95255	95240	95238	95237	95217	95214	95219	95215	95202	95201	95266	95268	95270
95185	95189	95189	95256	95241	95239	95238	95218	95215	95220	95216	95203	95202	95267	95269	95271
95186	95190	95190	95257	95242	95240	95239	95219	95216	95221	95217	95204	95203	95268	95270	95272
95187	95191	95191	95258	95243	95241	95240	95220	95217	95222	95218	95205	95204	95269	95271	95273
95188	95192	95192	95259	95244	95242	95241	95221	95218	95223	95219	95206	95205	95270	95272	95274
95189	95193	95193	95260	95245	95243	95242	95222	95219	95224	95220	95207	95206	95271	95273	95275
95190	95194	95194	95261	95246	95244	95243	95223	95220	95225	95221	95208	95207	95272	95274	95276
95191	95195	95195	95262	95247	95245	95244	95224	95221	95226	95222	95209	95208	95273	95275	95277
95192	95196	95196	95263	95248	95246	95245	95225	95222	95227	95223	95210	95209	95274	95276	95278
95193	95197	95197	95264	95249	95247	95246	95226	95223	95228	95224					

951

IVANHOE

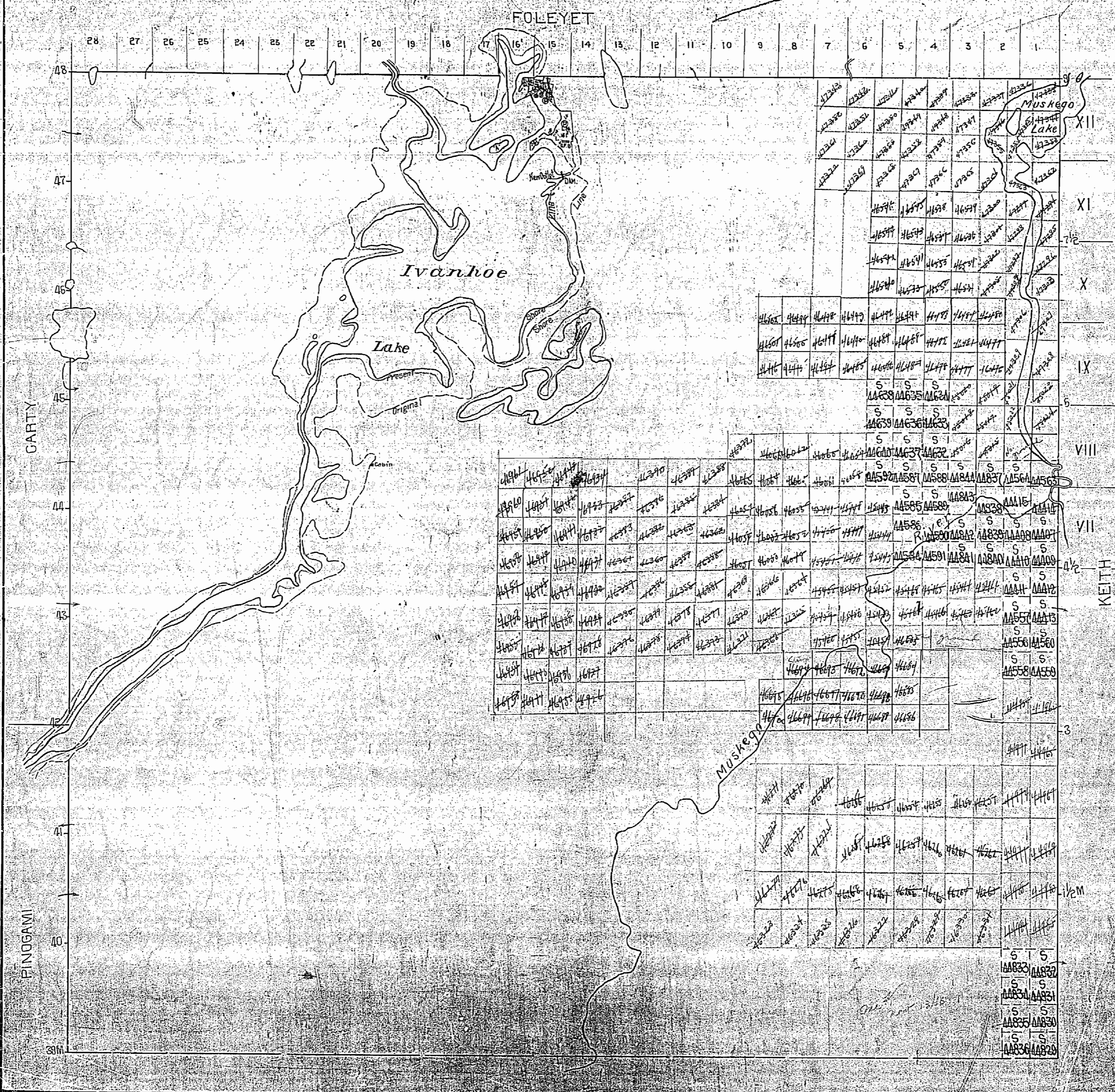
951

IVANHOE

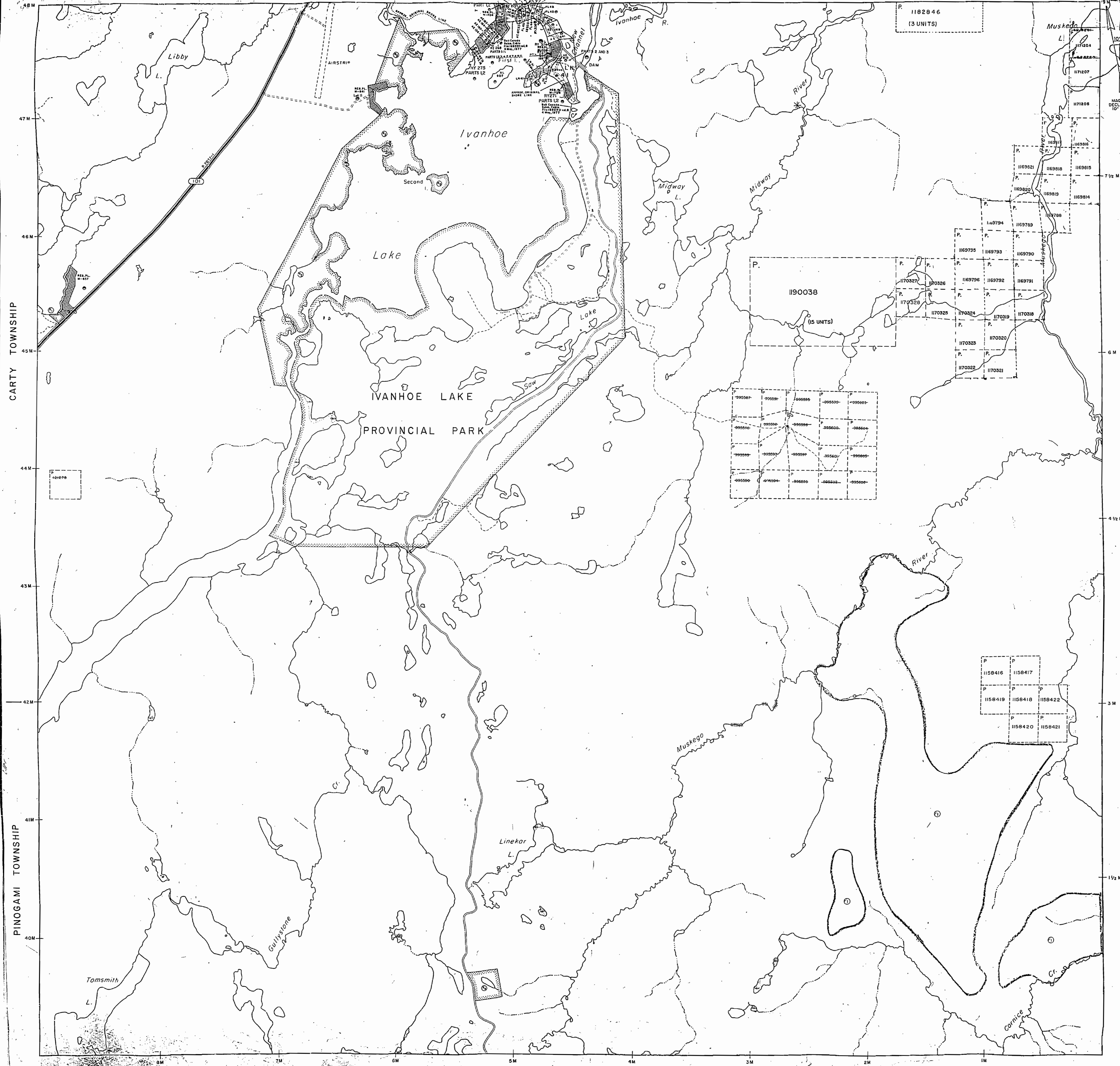
District of Sudbury

Scale 40 Chains = 1 inch

200 Res. M. 951



FOLEYET TOWNSHIP



LEGEND

- Highway and Route No.
- Other Road
- Trails
- Surveyed Lines
- Townships, Base Lines, Etc.
- Lots, Mining Claims, Parcels, Etc.
- Unsurveyed Lines
- Lot Lines
- Parcel Boundary
- Mining Claims Etc.
- Railway and Right of Way
- Utility Lines
- Non-Perennial Stream
- Flooding or Flooding Rights
- Subdivision or Composite Plan
- Reservations
- Original Shoreline
- Marsh or Muskeg
- Mines
- Traverse Monument
- Land Use Permit

DISPOSITION OF CROWN LANDS

TYPE OF DOCUMENT	SYMBOL
PATENT, SURFACE & MINING RIGHTS	●
" SURFACE RIGHTS ONLY	○
" MINING RIGHTS ONLY	◐
LEASE, SURFACE & MINING RIGHTS	◑
" SURFACE RIGHTS ONLY	◒
" MINING RIGHTS ONLY	◓
LICENCE OF OCCUPATION	◔
ORDER-IN-COUNCIL	OC
RESERVATION	○
CANCELLED	○
SAND & GRAVEL	○

NOTE: MINING RIGHTS IN PARCELS PATENTED PRIOR TO MAY 6, 1913, VESTED IN ORIGINAL PATENTEE BY THE PUBLIC LANDS ACT, R.S.O. 1910, CHAP. 300, SEC. 63, SUBSEC. 1.

SCALE 1:20 000

NOTES

①

REFERENCES

AREAS WITHDRAWN FROM DISPOSITION

DESCRIPTION	ORDER NO.	DATE	DISPOSITION	FILE
M.R.O. - MINING RIGHTS ONLY	22/2160			163003
S.R.O. - SURFACE RIGHTS ONLY	30/1771	M.B.S.		163002
M.R.S. - MINING AND SURFACE RIGHTS	15/1772	M.B.S.		163002 VOL. 3
	27/1772	M.B.S.		163002
M.N.R. RESERVE	24/1167	S.R.O.		163003

① THIS TWP. IS SUBJECT TO FOREST ACTIVITIES IN 1991 FURTHER INFORMATION AVAILABLE ON FILE.

MAP REPLACED SEPTEMBER 15, 1992 BY D.C.

THE INFORMATION THAT APPEARS ON THIS MAP HAS BEEN COMPILED FROM VARIOUS SOURCES, AND ACCURACY IS NOT GUARANTEED. THOSE WISHING TO STAKE MINING CLAIMS SHOULD CONSULT WITH THE MINING RECORDER, MINISTRY OF NORTHERN DEVELOPMENT AND MINES, FOR ADDITIONAL INFORMATION ON THE STATUS OF THE LANDS SHOWN HEREON.

TOWNSHIP
IVANHOE
M.N.R. ADMINISTRATIVE DISTRICT
CHAPLEAU
MINING DIVISION
PORCUPINE
LAND TITLES / REGISTRY DIVISION
SUDBURY

Ministry of Natural Resources Ontario
Ministry of Northern Development and Mines

Date OCTOBER, 1986
G-1102

M 951

ONTARIO
MINISTRY OF NATURAL RESOURCES
SURVEYS AND MAPPING BRANCH

PLAN OF IVANHOE TWP.

PORCUPINE MINING DIVISION DISTRICT OF SUDBURY.

REGISTERED PLAN OF SUBDIVISION
Pending application
under Public Lands Act

NOTES:

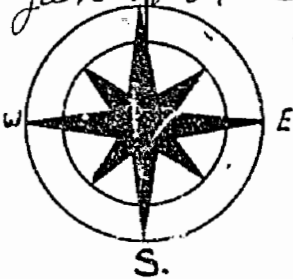
400' Surface Rights Reservation
around all Lakes and Rivers.

- S.U.P. Surface Rights Only withdrawn from staking Sec. 34(d)
- Mg. Act shown thus [Symbol] File 163003
- [Symbol] QUARRY PERMIT

Rec'd Sept 9/81
Removed from active
files Jan 8/87 of

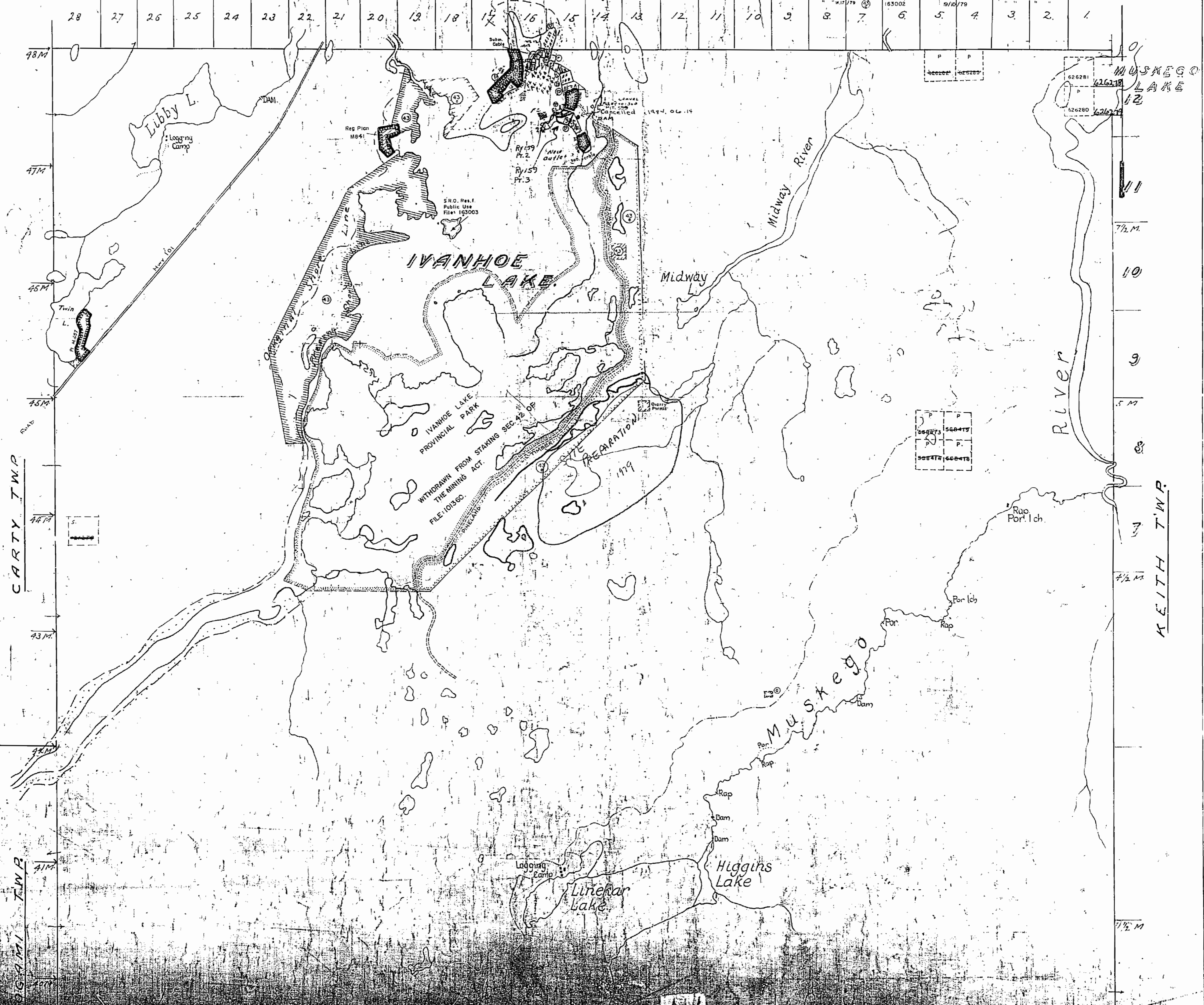
Areas withdrawn from staking under Section 43 of the Mining Act (R.S.O. 1970).

File	Date	Disposition
163002	30/7/71	Mining & Surface Rights
163002	15/2/72	mining & surface rights
163002	27/7/72	mining & surface rights
163002	4/10/72	S.R.O.



Scale, 40 chains to an inch.

FOLEYET TWP



CARTY TWP

KEITH TWP

FOLEYET TWP