

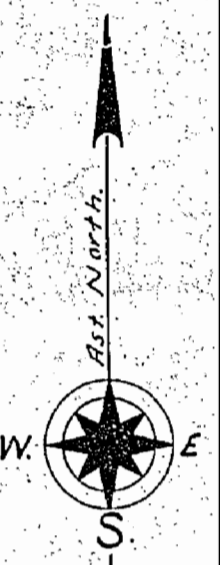
1764



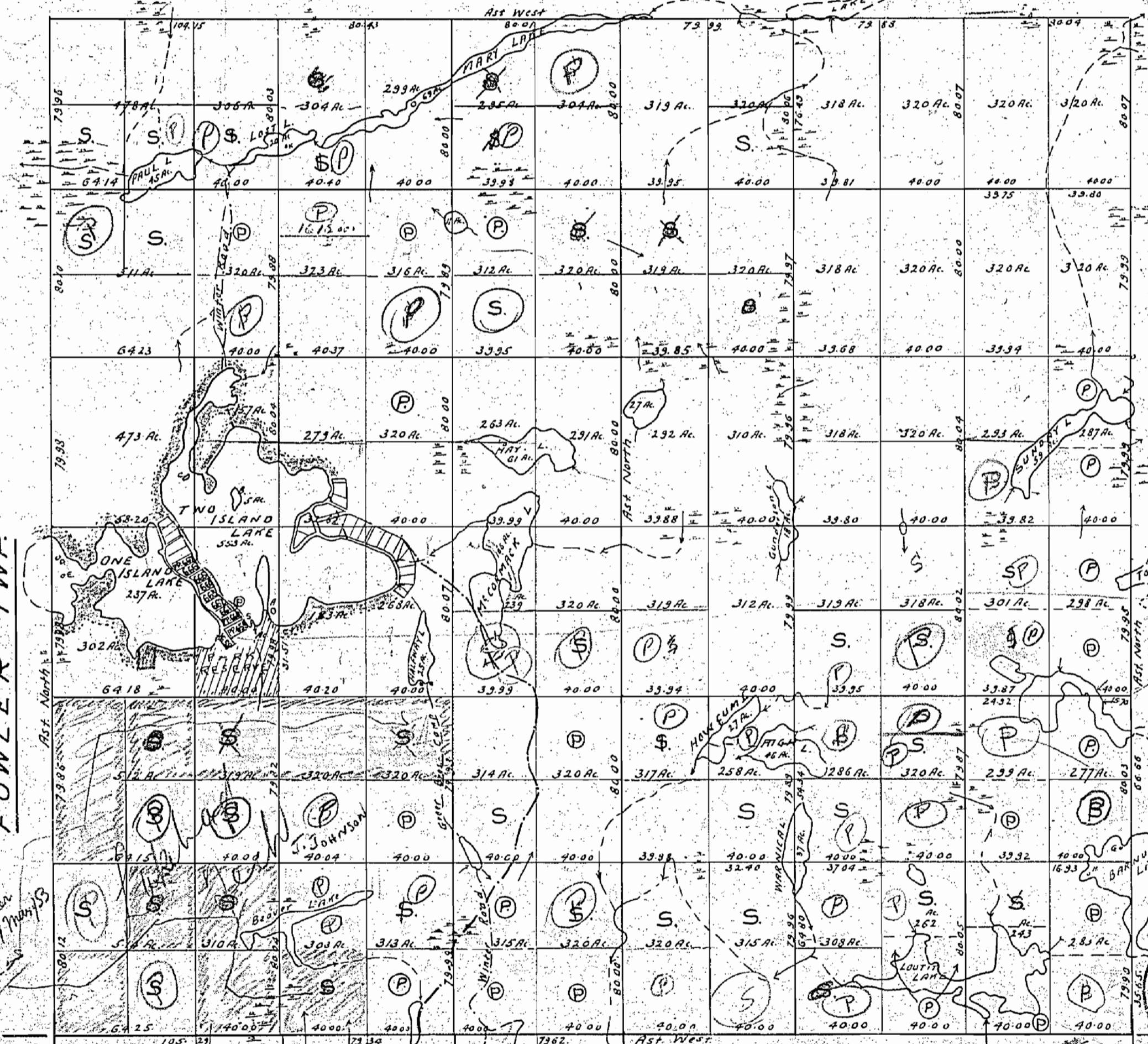
PLAN OF JACQUES TWP.

PORT ARTHUR MINING DIVISION.
DISTRICT OF THUNDER BAY.

Scale 40 chains to an inch.



Lot. 12 11 10 9 8 7 6 5 4 3 2 1



FOWLER TWP.

GORHAM TWP.

WARE TWP.

See file
217 May 1949

Surface reservations 200' wide by
Dept of H.F. shown here on this
1949

M1764
###



1764

THE TOWNSHIP OF
OF
JACQUES

DISTRICT OF
THUNDER BAY
PORT ARTHUR
MINING DIVISION

SCALE: 1-INCH=40 CHAINS

LEGEND

PATENTED LAND	(P)
CROWN LAND SALE	C.S.
LEASES	(L)
LOCATED LAND	Loc.
LICENSE OF OCCUPATION	L.O.
ROADS	—
IMPROVED ROADS	—
RAILWAYS	—
POWER LINES	—
MARSH OR MUSKEG	—

NOTES

RESERVED FOR PARK SITE MARKED
THUS: —

400' Surface Rights Reservation around
all lakes and rivers.

Land granted to Ontario Department of
Education by O.C. dated March 12, 1953,
shown thus: — File No. 80929.

Additional parcel in Lot 12, Con. 3, contain-
ing 19.59 acs, granted Feb. 17, 1955.

T.B

PLAN NO. - M1764

DEPARTMENT OF MINES
—ONTARIO—

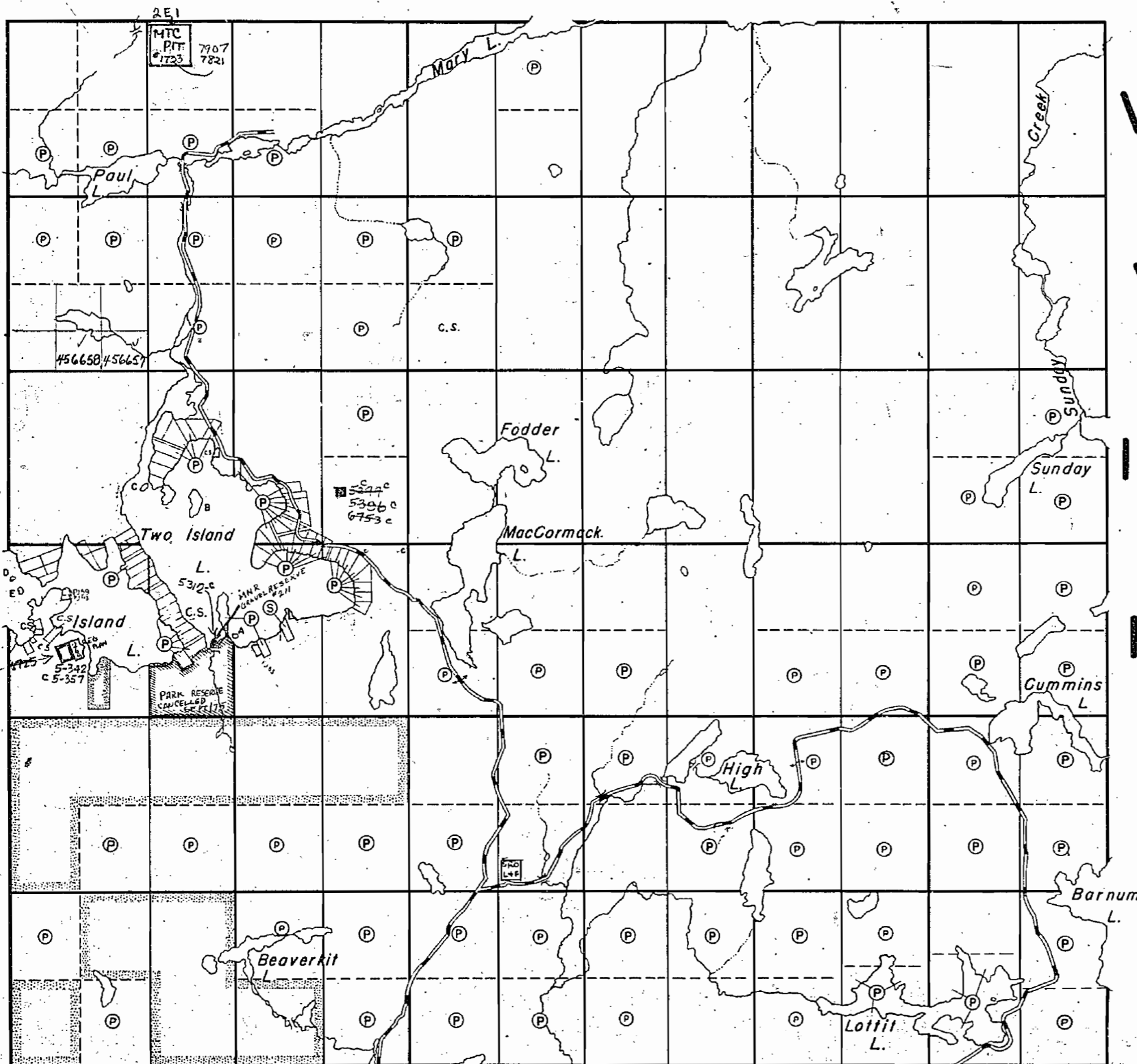
FOWLER TWP.

GORHAM TWP.

1968

MTC
should
be lot 11
con. 3
1/2 N 1/2

JK



MTC
PIT
#1735
7907
7821

456658/456657

5347
5306 c
6753 c

5-342
c 5-357

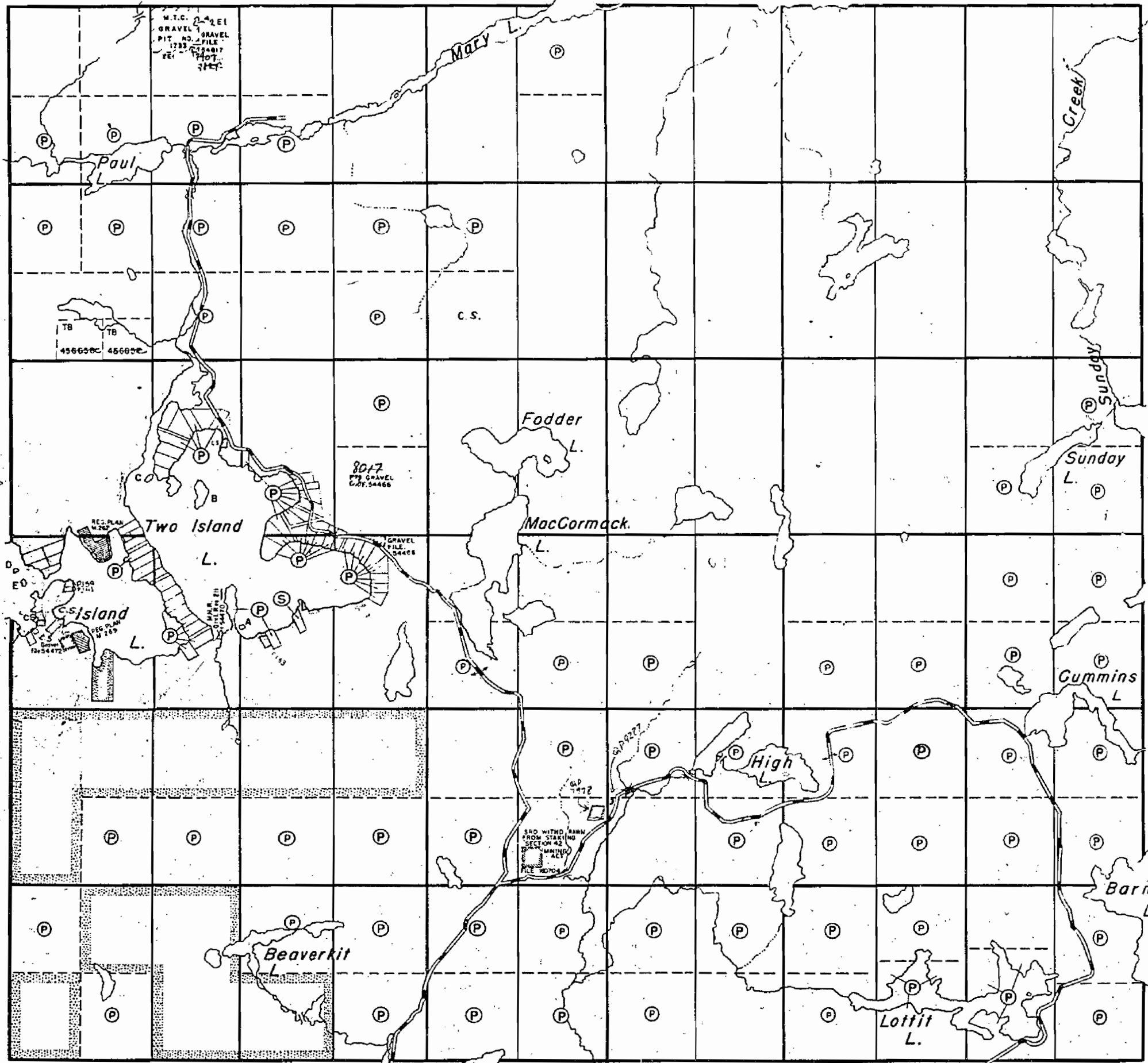
NO
L 1/2

1764

FOWLER TWP.

GORHAM TWP.

1977



VI

V

IV

III

II

I

THE TOWNSHIP OF
JACQUES

DISTRICT OF THUNDER BAY
THUNDER BAY MINING DIVISION

SCALE: 1-INCH=40 CHAINS

LEGEND

PATENTED LAND	(P)
CROWN LAND SALE	G.S.
LEASES	(L)
LOCATED LAND	Loc.
LICENSE OF OCCUPATION	L.O.
ROADS	—
IMPROVED ROADS	—
RAILWAYS	—
POWER LINES	—
MARSH OR MUSKIE	—

NOTES

400' Surface Rights Reservation around all lakes and rivers.

Land granted to Ontario Department of Education by O.C. dated March 12, 1953, shown thus: [stippled pattern] File No. 80929.

Additional parcel in Lot 12, Con. 3, containing 1959 acs, granted Feb. 17, 1955.

Jan. 21/77

THUNDER BAY DISTRICT

PLAN NO. - M.1764

MINISTRY OF NATURAL RESOURCES
SURVEYS AND MAPPING BRANCH

THE TOWNSHIP
OF
JACQUES

DISTRICT OF
THUNDER BAY
THUNDER BAY
MINING DIVISION

SCALE: 1-INCH=40 CHAINS

LEGEND

PATENTED LAND	(P)
CROWN LAND SALE	(C.S.)
LEASES	(L)
LOCATED LAND	Loc.
LICENSE OF OCCUPATION	L.O.
ROADS	—
IMPROVED ROADS	—
RAILWAYS	—
POWER LINES	—
MARSH OR MUSKEG	—

NOTES

400' Surface Rights Reservation around all lakes and rivers.

Land granted to Ontario Department of Education by O.C. dated March 12, 1953, shown thus: [stippled pattern] File No. 80929.

Additional parcel in Lot 12, Con. 3, containing 19.59 acs, granted Feb. 17, 1955.

JAN. 21/77

(1) SURFACE RIGHTS RESERVED
WNCR 36/81

THUNDER BAY DISTRICT

PLAN NO. - M.1764

ONTARIO
MINISTRY OF NATURAL RESOURCES
SURVEYS AND MAPPING BRANCH

FOWLER TWP.

GORHAM TWP.

VI

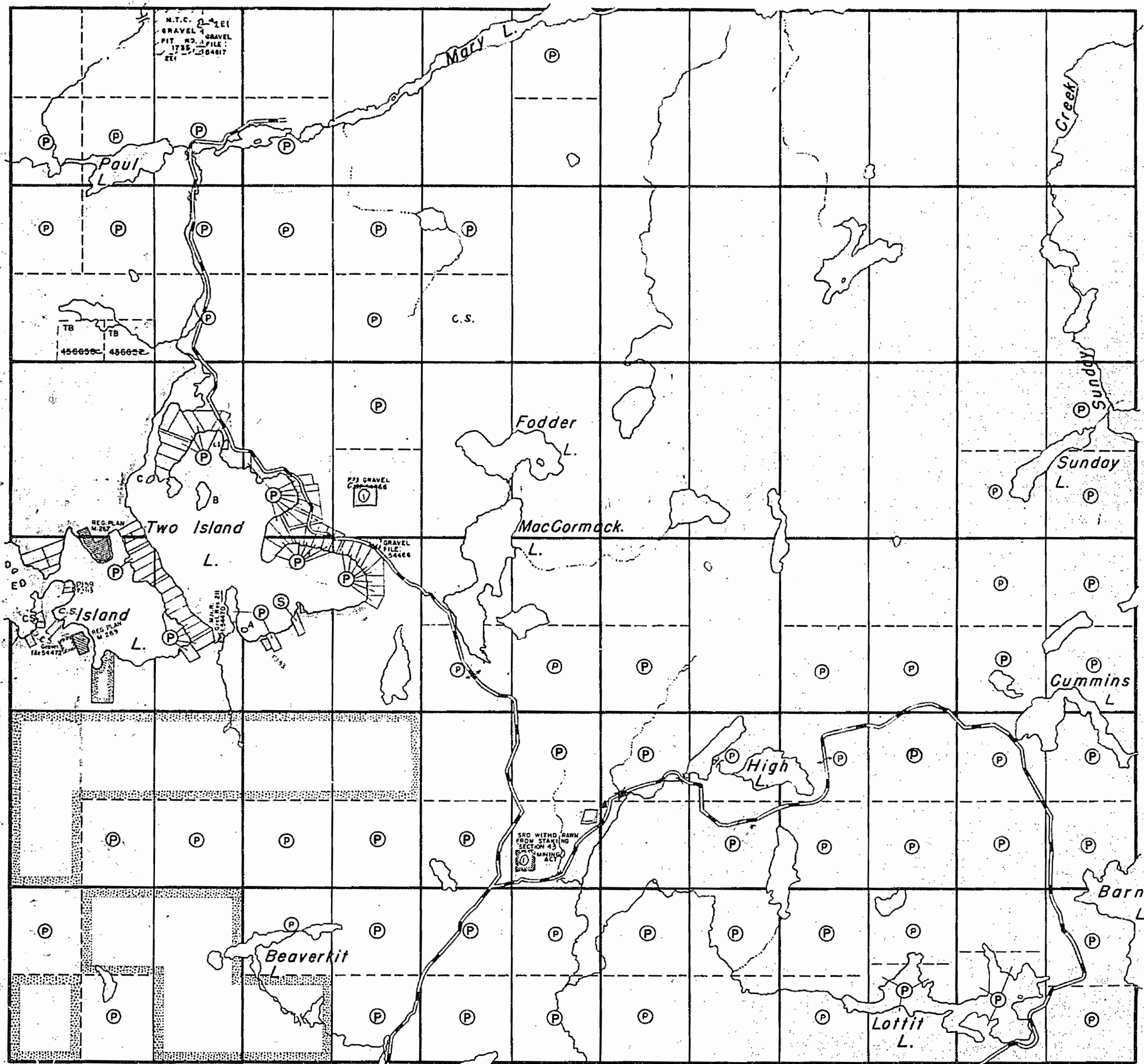
V

IV

III

II

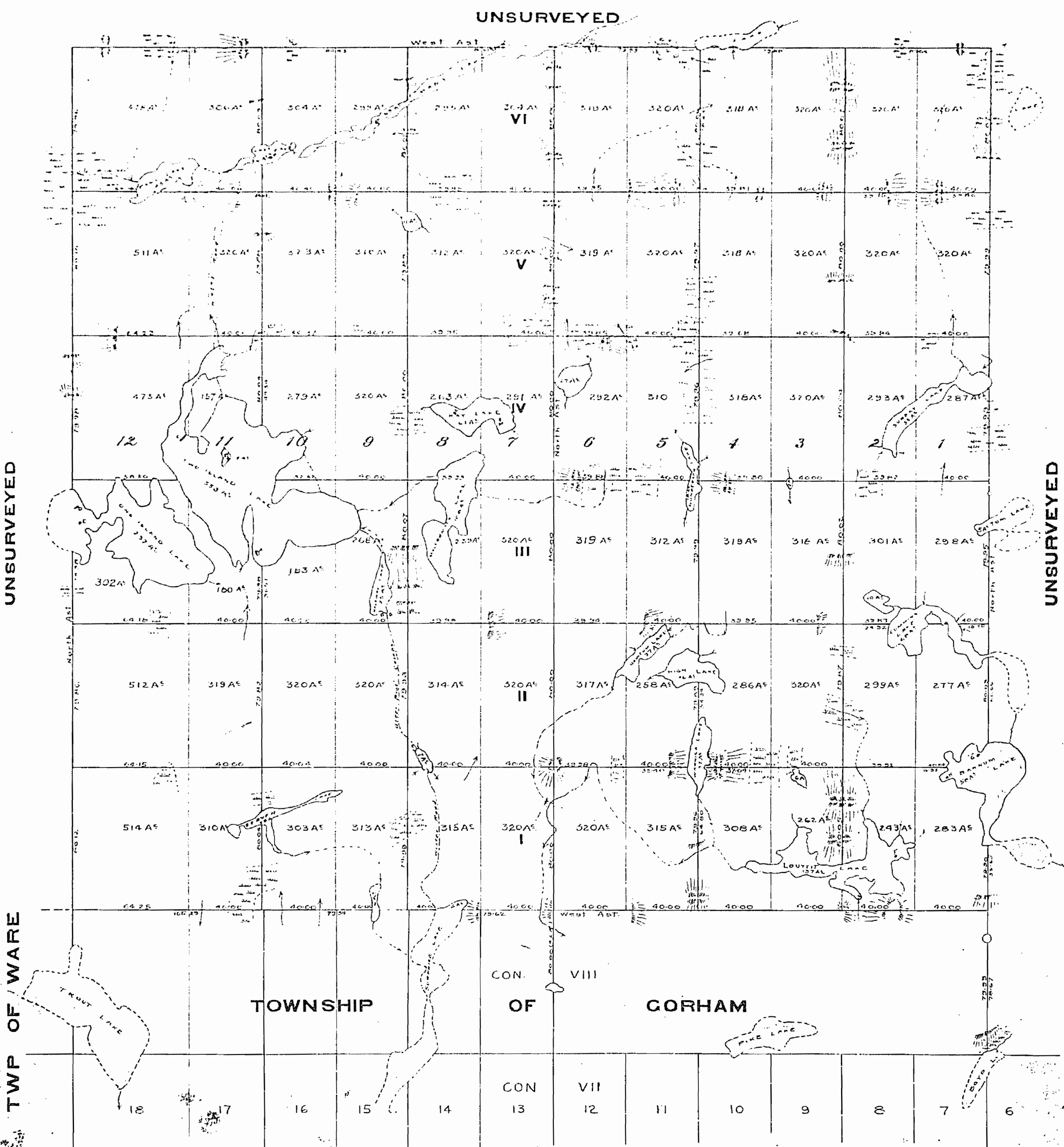
I



JK

PLAN OF THE TOWNSHIP OF
JACQUES #666
 DISTRICT OF THUNDER BAY
 ONTARIO
 SURVEYED BY PHILLIPS & BENNER
 1914
 SCALE: 40⁰⁰⁰ = 1⁰⁰⁰

- AREA -
 LOTS 27532 ACRES
 WATER 1668
 ISLAND 7
 TOTAL 24207



I hereby certify that this plan is correct and is prepared from actual survey made under my personal supervision and that I was in my own proper person present on the ground during the progress of such survey
 PORT ARTHUR, Dec. 21st, 1914.

PHILLIPS & BENNER
 Per J. K. Benner
 ONTARIO LAND SURVEYOR

Examined with field notes Feb. 17th 1915 - S.H.
 Copy to 17 Feb 23rd 1915 - S.H.
 Returned 4 Dec 1915

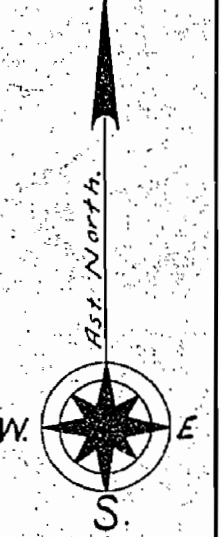
1764



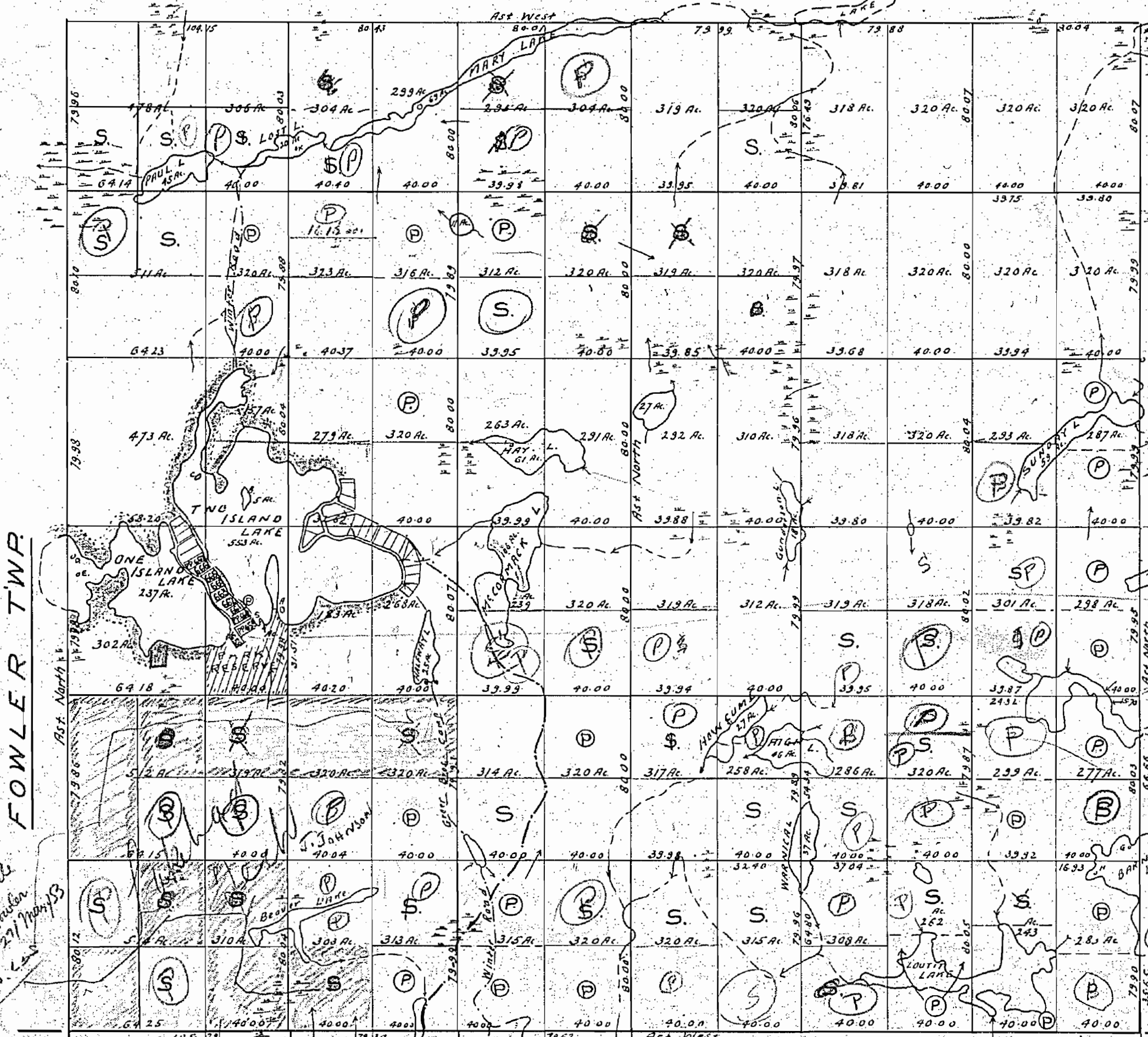
PLAN OF JACQUES TWP.

PORT ARTHUR MINING DIVISION.
DISTRICT OF THUNDER BAY.

Scale 40 chains to an inch.



Lot 12 11 10 9 8 7 6 5 4 3 2 1



FOWLER TWP.

WARE TWP.

GORHAM TWP.

See file
Port Arthur
27/1/1949
C.S. 625

Surface reservations 200 wide by
Dept. of H.P. shown hereon - this
1949

1764
#



JACQUES Twp. T.B. 101

1764

THE TOWNSHIP OF
OF
JACQUES

DISTRICT OF
THUNDER BAY
PORT ARTHUR
MINING DIVISION

SCALE: 1-INCH=40 CHAINS

LEGEND

PATENTED LAND	Ⓟ
CROWN LAND SALE	C.S.
LEASES	Ⓛ
LOCATED LAND	Loc.
LICENSE OF OCCUPATION	L.O.
ROADS	—
IMPROVED ROADS	—
RAILWAYS	—
POWER LINES	—
MARSH OR MUSKEG	—

NOTES

RESERVED FOR PARK SITE MARKED
THUS: —

400' Surface Rights Reservation around
all lakes and rivers.

Land granted to Ontario Department of
Education by O. C. dated March 12, 1953,
shown thus: — File No. 80929.

Additional parcel in Lot 12, Con. 3, contain-
ing 19.59 acs, granted Feb. 17, 1955.

T.B

PLAN NO. - M1764

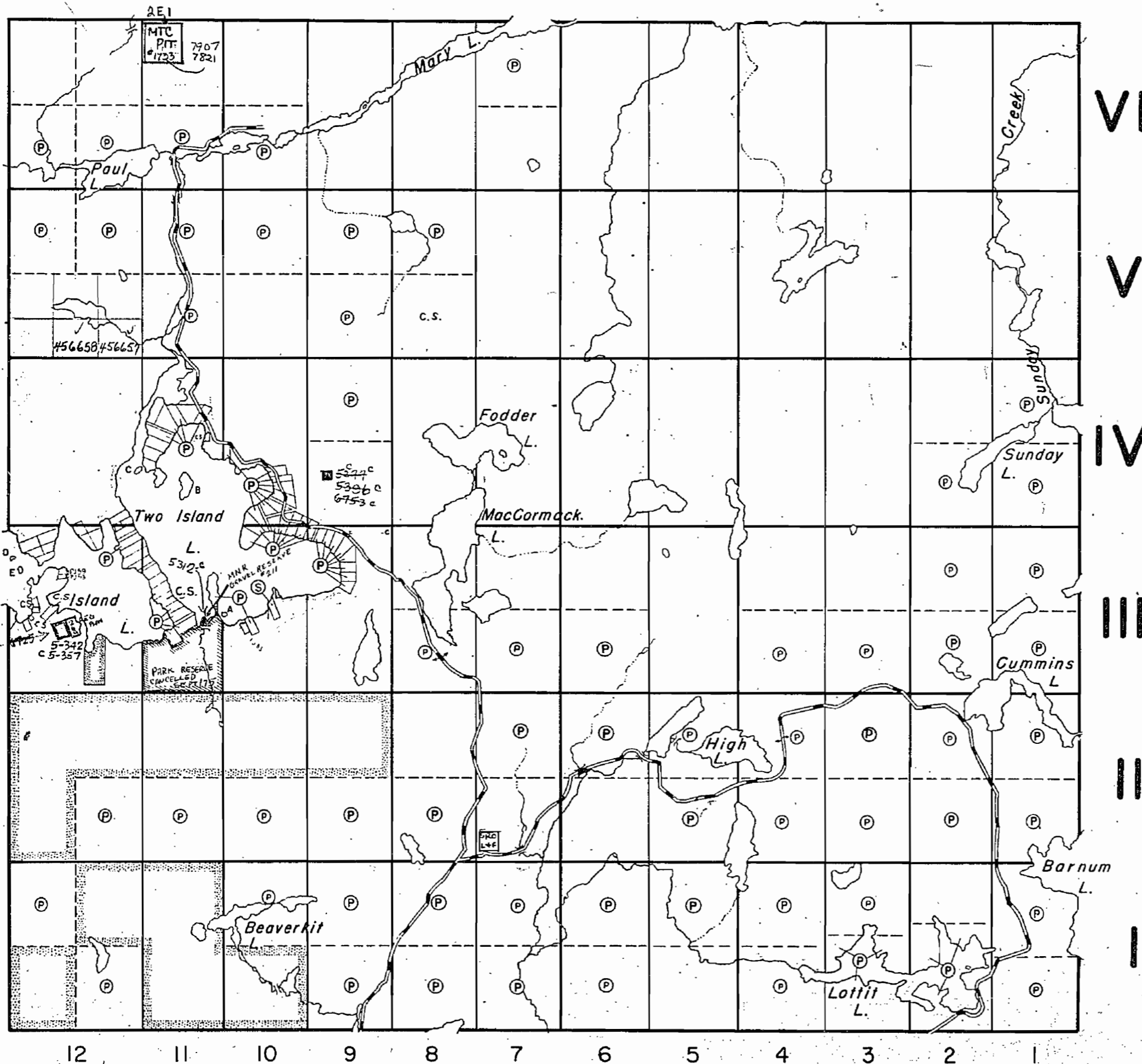
DEPARTMENT OF MINES
—ONTARIO—

FOWLER TWP.

GORHAM TWP.

1968

MTC
should be lot 11
con. 6
M1764



1764

THE TOWNSHIP OF
OF
JACQUES

DISTRICT OF
THUNDER BAY
THUNDER BAY
MINING DIVISION

SCALE: 1-INCH=40 CHAINS

LEGEND

PATENTED LAND	Ⓟ
CROWN LAND SALE	C.S.
LEASES	Ⓛ
LOCATED LAND	Loc.
LICENSE OF OCCUPATION	L.O.
ROADS	—
IMPROVED ROADS	—
RAILWAYS	—
POWER LINES	—
MARSH OR MUSKEG	—

NOTES

400' Surface Rights Reservation around all lakes and rivers.

Land granted to Ontario Department of Education by O.C. dated March 12, 1953, shown thus: [stippled pattern] File No. 80929.

Additional parcel in Lot 12, Con. 3, containing 19.59 acs, granted Feb. 17, 1955.

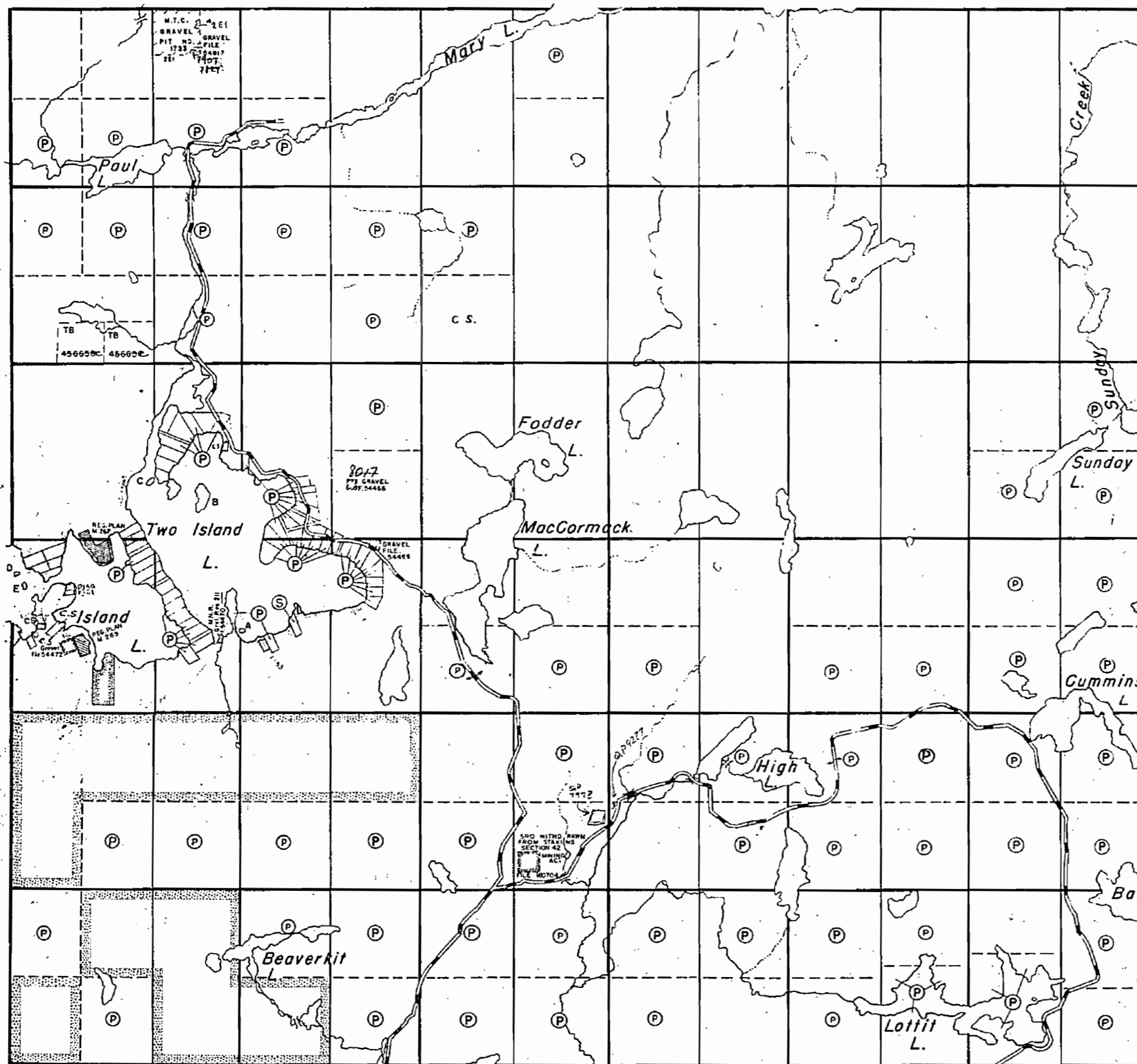
Jan. 21/77

THUNDER BAY DISTRICT

PLAN NO. - M.1764

MINISTRY OF NATURAL RESOURCES
SURVEYS AND MAPPING BRANCH

FOWLER TWP.



VI

V

IV

III

II

I

12

11

10

9

8

7

6

5

4

3

2

1

GORHAM TWP.

1977

NOTES

Land granted to Ontario Department of Education by O.C. dated March 12, 1953, shown thus: [Symbol] File No. 80929
 Additional parcel in Lot 12, Con.3, containing 19.59 acs, granted Feb. 17, 1955.

SAND & GRAVEL

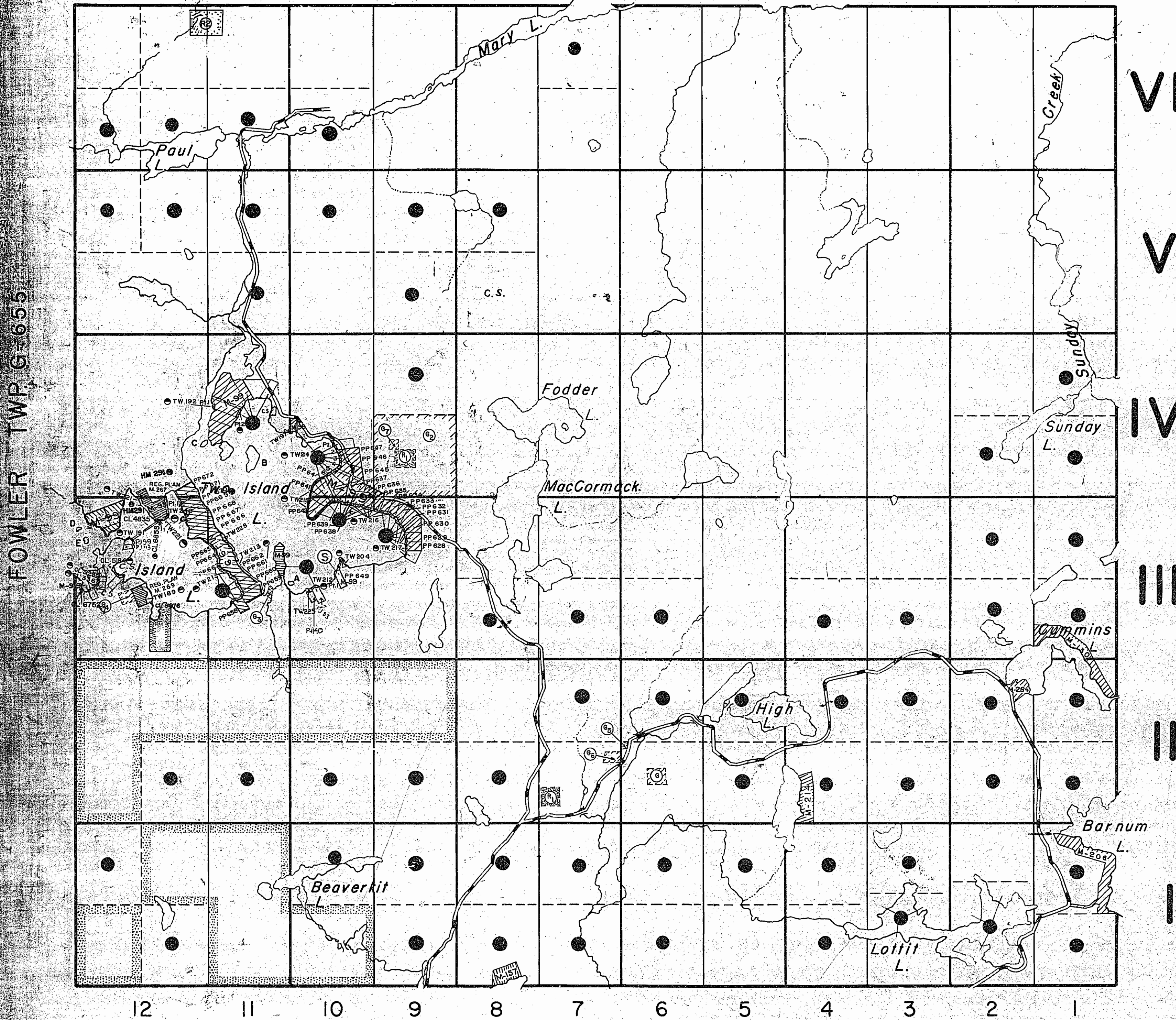
- ⊙ QUARRY PERMIT
- ⊙ M.T.C. GRAVEL PIT No. 1733 2E-1 FILE: 54617
- ⊙ " " " No. 2E-43
- ⊙ M.N.R. GRAVEL RES. 211 FILE: 54470
- ⊙ GRAVEL FILE: 54472
- ⊙ " " 54427
- ⊙ " " 54429
- ⊙ GRAVEL

AREAS WITHDRAWN FROM DISPOSITION

S.R. — SURFACE RIGHTS M.R. — MINING RIGHTS

Description	Order No.	Date	Disposition	File
⊙ MINING AND SURFACE RIGHTS WITHDRAWN FROM STAKING ORDER WTS 23/94 NWR DATED 06/05/94 TO PROTECT FOREST RESEARCH SAMPLE PLOTS	NCR W36/81	27/2/81	S.R.O.	188542

STIRRETT BAY (Dog Lake G-



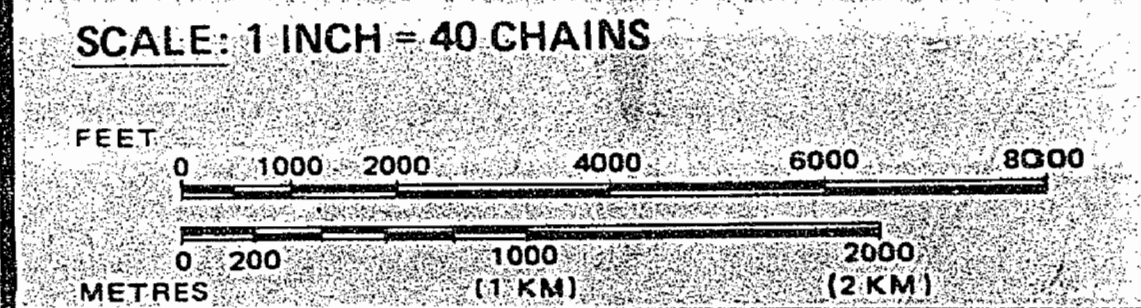
LEGEND

- HIGHWAY AND ROUTE No. [Symbol]
- OTHER ROADS [Symbol]
- TRAILS [Symbol]
- SURVEYED LINES:
 - TOWNSHIPS, BASE LINES, ETC. [Symbol]
 - LOTS, MINING CLAIMS, PARCELS, ETC. [Symbol]
- UNSURVEYED LINES:
 - LOT LINES [Symbol]
 - PARCEL BOUNDARY [Symbol]
 - MINING CLAIMS ETC. [Symbol]
- RAILWAY AND RIGHT OF WAY [Symbol]
- UTILITY LINES [Symbol]
- NON-PERENNIAL STREAM [Symbol]
- FLOODING OR FLOODING RIGHTS [Symbol]
- SUBDIVISION OR COMPOSITE PLAN [Symbol]
- RESERVATIONS [Symbol]
- ORIGINAL SHORELINE [Symbol]
- MARSH OR MUSKEG [Symbol]
- MINES [Symbol]
- TRAVERSE MONUMENT [Symbol]

DISPOSITION OF CROWN LANDS

TYPE OF DOCUMENT	SYMBOL
PATENT, SURFACE & MINING RIGHTS	●
" SURFACE RIGHTS ONLY	○
" MINING RIGHTS ONLY	◐
LEASE, SURFACE & MINING RIGHTS	■
" SURFACE RIGHTS ONLY	◼
" MINING RIGHTS ONLY	◻
LICENCE OF OCCUPATION	▼
ORDER-IN-COUNCIL	OC
RESERVATION	⊙
CANCELLED	⊖
SAND & GRAVEL	⊙

LAND USE PERMITS FOR COMMERCIAL, TOURISM, OUTPOST CAMPS
 NOTE: MINING RIGHTS IN PARCELS PATENTED PRIOR TO MAY 6, 1913, VESTED IN ORIGINAL PATENTEE BY THE PUBLIC LANDS ACT, R.S.O. 1970, CHAP. 380, SEC. 63, SUBSEC. 1.



TOWNSHIP
JACQUES TWP.
 M.N.R. ADMINISTRATIVE DISTRICT
THUNDER BAY
 MINING DIVISION
THUNDER BAY
 LAND TITLES / REGISTRY DIVISION
THUNDER BAY

Ontario Ministry of Natural Resources Land Management Branch

Ontario **JUNE 3, 1982**

Date	MARCH 1982	Number	G-666
------	------------	--------	--------------