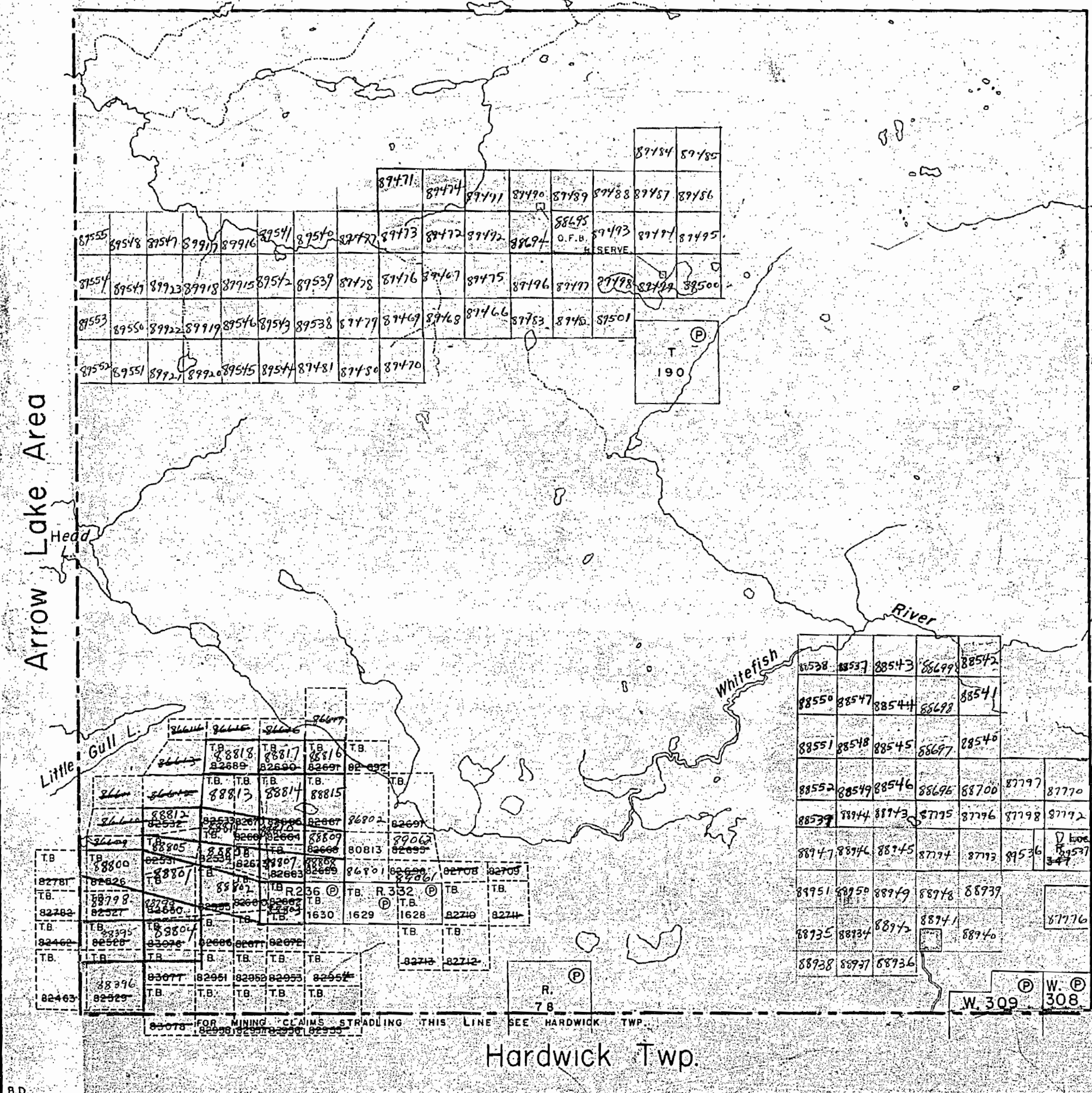


1765

NEVIN TWP



THE TOWNSHIP
OF

JEAN

DISTRICT OF
THUNDER BAY
THUNDER BAY
MINING DIVISION

SCALE: 1-INCH=40 CHAINS

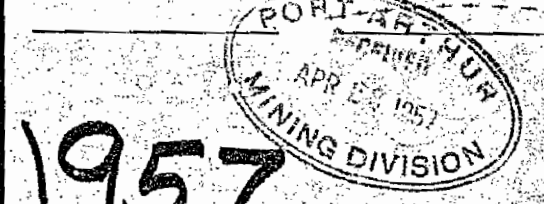
LEGEND

- PATENTED LAND ⊙ or C.S.
- CROWN LAND SALE ⊙
- LEASES ⊙
- LOCATED LAND Loc.
- LICENSE OF OCCUPATION L.O.
- MINING RIGHTS ONLY M.R.O.
- SURFACE RIGHTS ONLY S.R.C.
- ROADS —
- IMPROVED ROADS —
- KING'S HIGHWAYS —
- RAILWAYS —
- POWER LINES —
- MARSH OR MUSKEG —
- MINES X

NOTES

Area Reserved to Dept of Highway
Shown Thus: ———

Abandoned Railway Shown Thus: ———



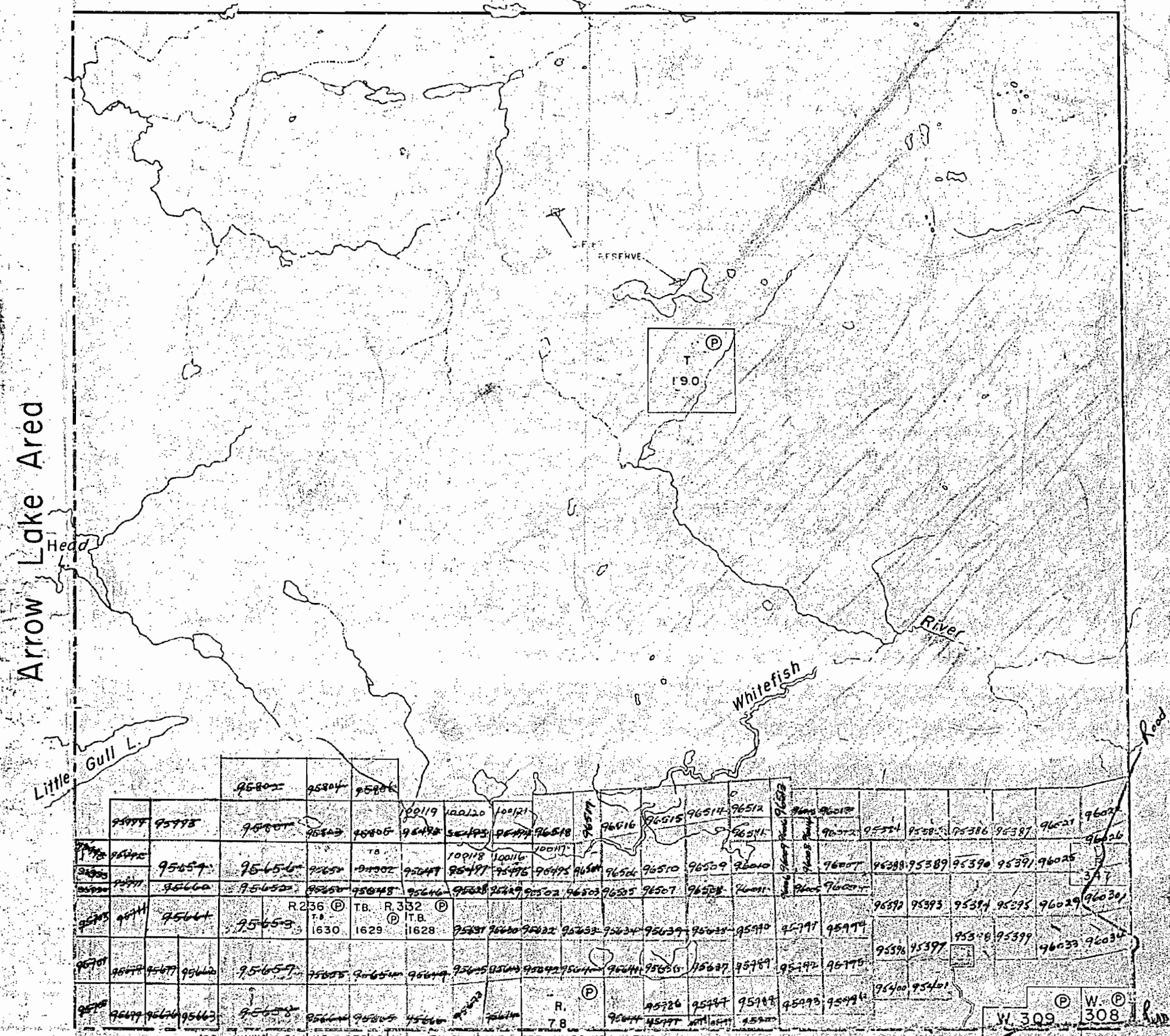
1957
m 1765
141A

PLAN

DEPARTMENT OF MINES
—ONTARIO—

B.D.

THE TOWNSHIP OF
 OF
JEAN
 DISTRICT OF
 THUNDER BAY
 THUNDER BAY
 MINING DIVISION
 SCALE: 1-INCH= 40 CHAINS



LEGEND

PATENTED LAND	Ⓟ
CROWN LAND SALE	Ⓞ or C.S.
LEASES	Ⓛ
LOCATED LAND	Loc.
LICENSE OF OCCUPATION	L.O.
MINING RIGHTS ONLY	M.R.O.
SURFACE RIGHTS ONLY	S.R.O.
ROADS	—
IMPROVED ROADS	—
KING'S HIGHWAYS	—
RAILWAYS	—
POWER LINES	—
MARSH OR MUSKEG	—
MINES	X

NOTES

Area Reserved to Dept of Highway
 Shown Thus -

Abandoned Railway Shown Thus -

*□ include Townships & Townships & Counties
 cancelled - see letter J.R. to R. B. 1/1/60*

1959

PLAN M1765

DEPARTMENT OF MINES
 —ONTARIO—

OR MINING CLAIMS STRADDLING THIS LINE SEE HARDWICK TWP.
 Hardwick Twp.

1765

THE TOWNSHIP
OF

JEAN

DISTRICT OF
THUNDER BAY

THUNDER BAY
MINING DIVISION

SCALE: 1-INCH= 40 CHAINS

LEGEND

PATENTED LAND	Ⓟ
CROWN LAND SALE	Ⓞ or C.S.
LEASES	Ⓢ
LOCATED LAND	Loc.
LICENSE OF OCCUPATION	L.O.
MINING RIGHTS ONLY	M.R.O.
SURFACE RIGHTS ONLY	S.R.O.
ROADS	— — — — —
IMPROVED ROADS	— — — — —
KING'S HIGHWAYS	— — — — —
RAILWAYS	— — — — —
POWER LINES	— — — — —
MARSH OR MUSKEG	— — — — —
MINES	Ⓧ

NOTES

Area Reserved to Dept. of Highway
Shown Thus ————

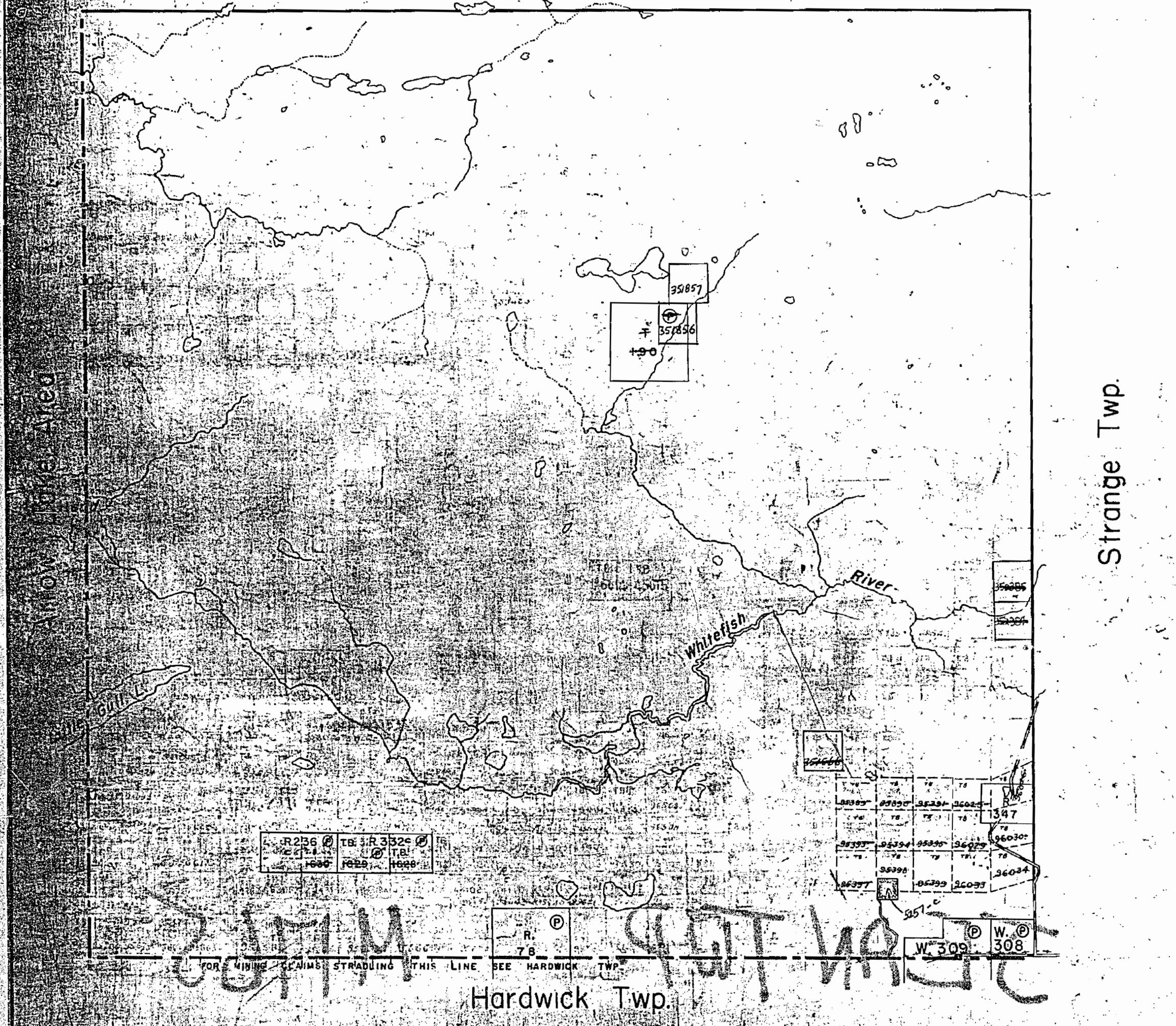
Abandoned Railway Shown Thus ————

400' SURFACE RIGHTS RESERVATION
AROUND ALL LAKES & RIVERS

1965

PLAN M. 1765

DEPARTMENT OF MINES
— ONTARIO —



Strange Twp.

Hardwick Twp.

FOR MINING CLAIMS STRADDLING THIS LINE SEE HARDWICK TWP.

OF

JEAN

DISTRICT OF THUNDER BAY

THUNDER BAY MINING DIVISION

SCALE: 1-INCH= 40 CHAINS

LEGEND

PATENTED LAND	Ⓟ
CROWN LAND SALE	Ⓢ or C.S.
LEASES	Ⓛ
LOCATED LAND	Loc.
LICENSE OF OCCUPATION	L.O.
MINING RIGHTS ONLY	M.R.O.
SURFACE RIGHTS ONLY	S.R.O.
ROADS	—
IMPROVED ROADS	—
KING'S HIGHWAYS	—
RAILWAYS	—
POWER LINES	—
MARSH OR MUSKEG	—
MINES	ⓧ

NOTES

Area Reserved to Dept. of Highway

Shown Thus -

Abandoned Railway Shown Thus -

400' SURFACE RIGHTS RESERVATION AROUND ALL LAKES & RIVERS

JAN. 25/77

Oct. 18/84

THUNDER BAY DISTRICT

PLAN M. 1765

ONTARIO

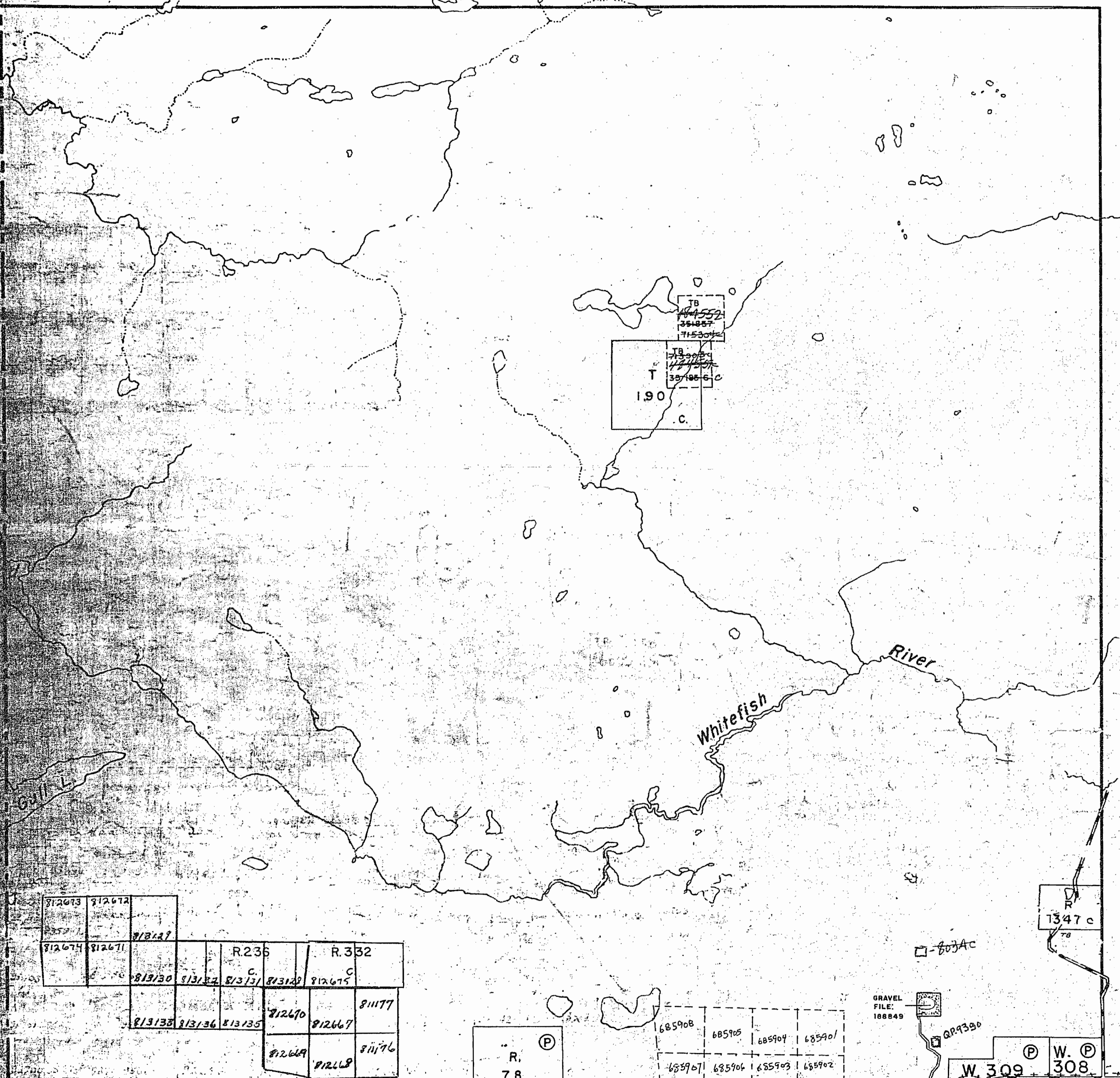
MINISTRY OF NATURAL RESOURCES

SURVEYS AND MAPPING BRANCH

Strange Twp.

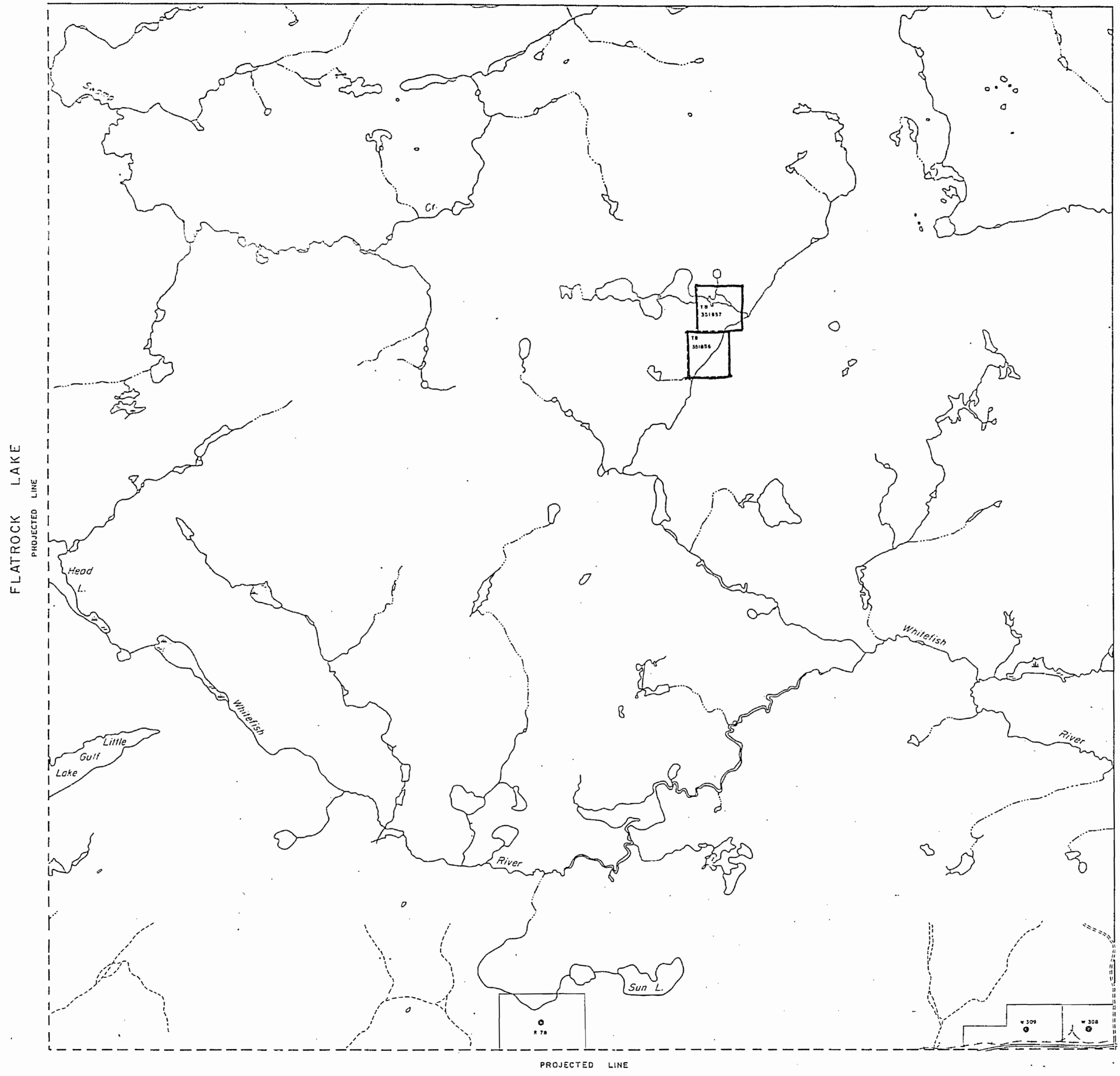
Hardwick Twp.

FOR MINING CLAIMS STRADDLING THIS LINE SEE HARDWICK TWP.



DISPOSITION
 M.S. - MINING RIGHTS ONLY
 S.R. - SURFACE RIGHTS ONLY
 M.S. - MINING AND S.R. - SURFACE RIGHTS

FLATROCK LAKE



PROJECTED LINE
 HARDWICK TOWNSHIP

LEGEND

HIGHWAY AND ROUTE No.	—+—+—+—
OTHER ROADS	—+—+—
TRAILS	---
SURVEYED LINES	—+—+—
TOWNSHIP BASE LINES ETC.	—+—+—
LOTS MINING CLAIMS PARCELS, ETC.	—+—+—
UNSURVEYED LINES	---
LOT LINES	---
PAVEMENT BOUNDARY	---
MINING CLAIMS ETC.	---
RAILWAY AND RIGHT OF WAY	---
UTILITY LINES	---
NON PERMANENT STREAM	---
FLOODING OR FLOODING RIGHTS	---
SUBDIVISION OR COMPOSITE PLAN	---
RESERVATIONS	---
ORIGINAL SHORELINE	---
MARSH OR MUSKIEG	---
MINES	---
TRAVERSE MONUMENT	---

DISPOSITION OF CROWN LANDS

TYPE OF DOCUMENT	SYMBOL
PATENT, SURFACE & MINING RIGHTS	○
— SURFACE RIGHTS ONLY	○
— MINING RIGHTS ONLY	○
LEASE, SURFACE & MINING RIGHTS	■
— SURFACE RIGHTS ONLY	■
— MINING RIGHTS ONLY	■
LICENCE OF OCCUPATION	○
ORDER IN COUNCIL	OC
RESERVATION	○
CANCELLED	○
SAND & GRAVEL	○

NOTE: MINING RIGHTS IN PARCELS PATENTED PRIOR TO MAY 1 1912 VESTED IN ORIGINAL PATENTEE BY THE PUBLIC LANDS ACT R.S.O. 1970 CHAP. 340 SFC. 62, SUBSEC. 1



SCALE 1:20 000

STRANGE TOWNSHIP

Summer Resort Locations Not Open For Staking - Sec. 31 (c).

TOWNSHIP
JEAN
 M.N.R. ADMINISTRATIVE DISTRICT
 THUNDER BAY
 MINING DIVISION
 THUNDER BAY
 LAND TITLES / REGISTRY DIVISION
 THUNDER BAY
 Nov 7, 1986

Ministry of Natural Resources
 Ontario
 Ministry of Northern Development and Mines

Date: SEPTEMBER, 1986. Number
G-683

DISPOSITION OF CROWN LANDS

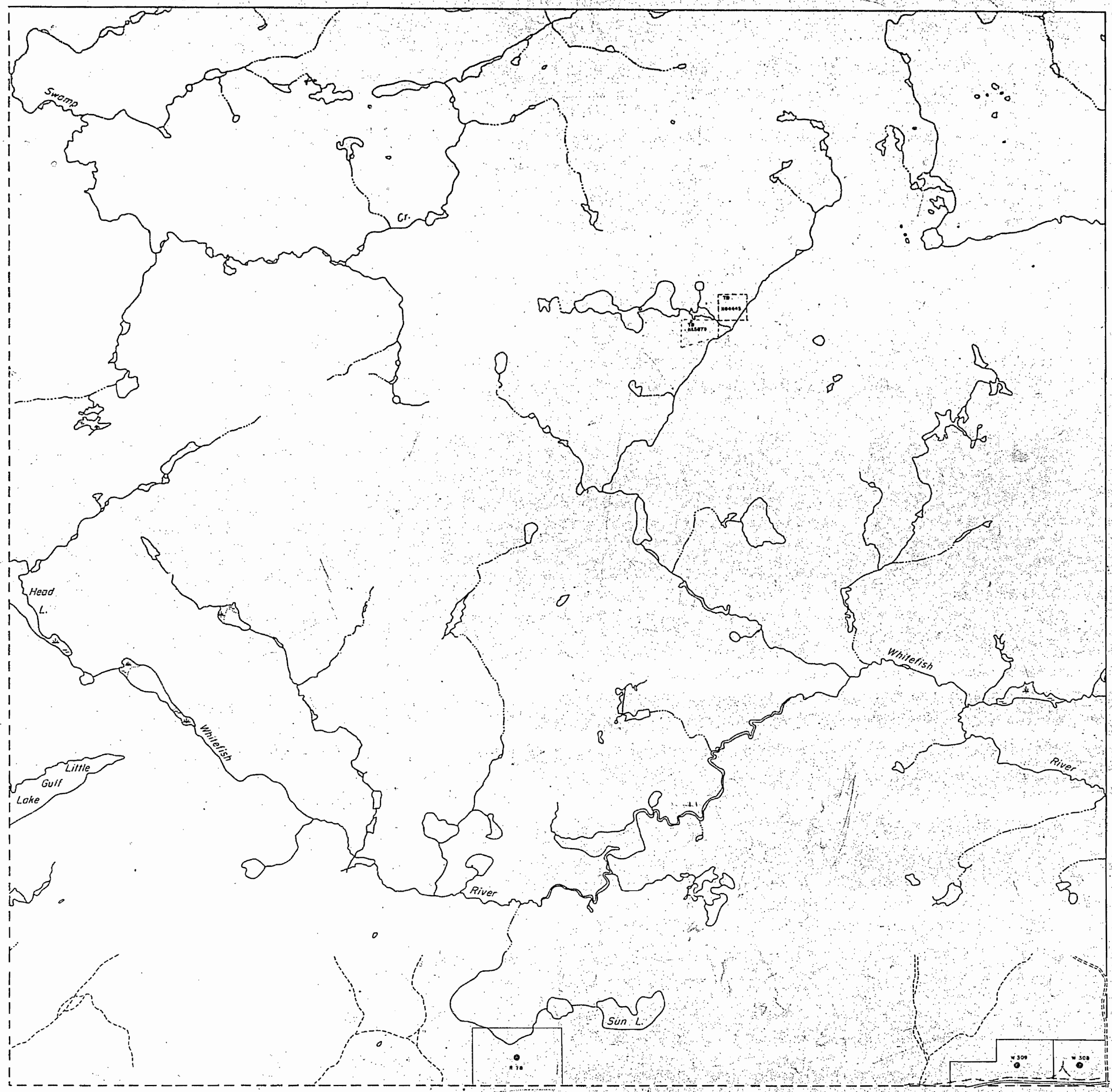
- 1.0 - MINING RIGHTS ONLY
- 2.0 - SURFACE RIGHTS ONLY
- 3.0 - MINING AND SURFACE RIGHTS

Order No. Date Description Fee

RECEIVED
THUNDER BAY
MINING DIVISION
27 OCT 27 AM '00

FLATROCK LAKE

FLATROCK LAKE
PROJECTED LINE



PROJECTED LINE
HARDWICK TOWNSHIP

STRANGE TOWNSHIP

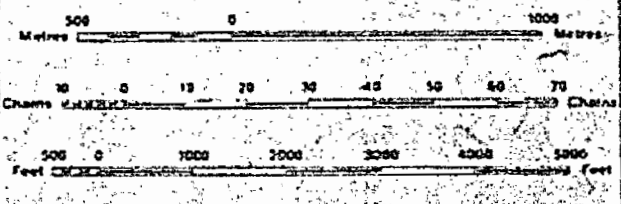
LEGEND

- HIGHWAY AND ROUTE NO.
- OTHER ROADS
- TRAILS
- SURVEYED LINES
- TOWNSHIPS, BASE LINES, ETC.
- LOTS, MINING CLAIMS, PARCELS, ETC.
- UN-SURVEYED LINES
- LOT LINES
- PARCEL BOUNDARY
- MINING CLAIMS ETC.
- RAILWAY AND RIGHT OF WAY
- UTILITY LINES
- NON-PERMANENT STREAM
- FLOODING OR FLOODING RIGHTS
- SUBDIVISION OR COMPOSITE PLAN
- RESERVATIONS
- ORIGINAL SHORELINE
- MARSH OR MUSKEG
- MINES
- TRAVERSE MONUMENT

DISPOSITION OF CROWN LANDS

TYPE OF DOCUMENT	SYMBOL
PATENT, SURFACE & MINING RIGHTS	○
SURFACE RIGHTS ONLY	○
MINING RIGHTS ONLY	○
LEASE, SURFACE & MINING RIGHTS	□
SURFACE RIGHTS ONLY	□
MINING RIGHTS ONLY	□
LICENCE OF OCCUPATION	○
ORDER IN COUNCIL	○
RESERVATION	○
CANCELLED	○
SAND & GRAVEL	○

NOTE: MINING RIGHTS IN PARCELS PATENTED PRIOR TO MAY 8, 1912, VESTED IN ORIGINAL PATENTEES BY THE PUBLIC LANDS ACT, R.S.O. 1970, CHAP. 380, SEC. 53, SUBSEC. 1.



TOWNSHIP
JEAN
M.N.R. ADMINISTRATIVE DISTRICT
THUNDER BAY
MINING DIVISION
THUNDER BAY
LAND TITLES / REGISTRY DIVISION
THUNDER BAY
Nov 7, 1986

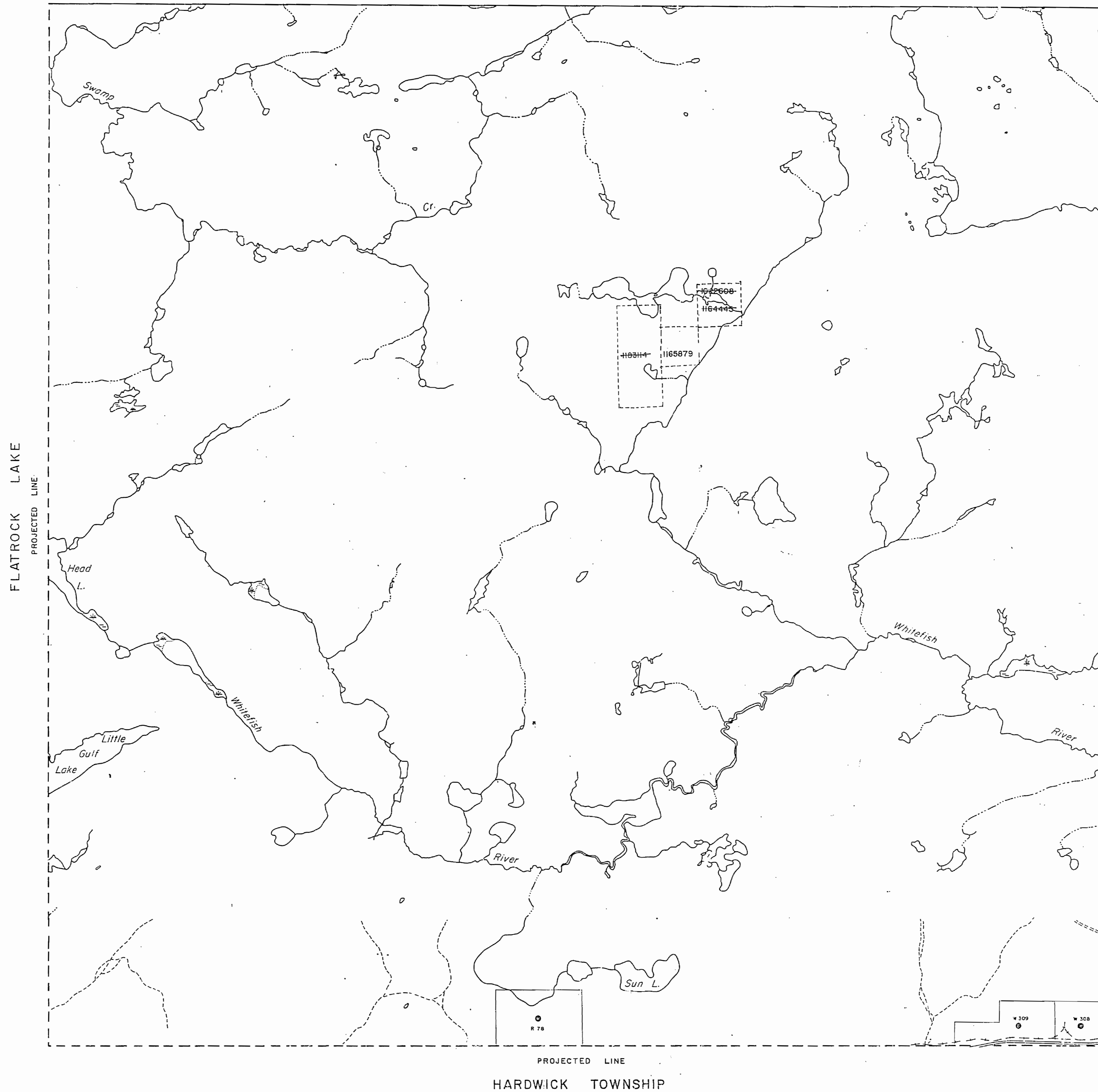
Ministry of Natural Resources Ontario
Ministry of Northern Development and Mines

SEPTEMBER 1986
Number
G-683

M.S. - MINING RIGHTS ONLY
 S.R.O. - SURFACE RIGHTS ONLY
 M.S. - MINING AND SURFACE RIGHTS

Description	Order No.	Date	Disposition	File

FLATROCK LAKE



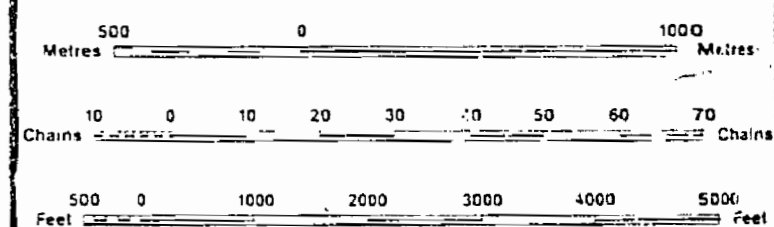
LEGEND

- HIGHWAY AND ROUTE No.
- OTHER ROADS
- TRAILS
- SURVEYED LINES
- TOWNSHIPS, BASE LINES, ETC.
- LOTS, MINING CLAIMS, PARCELS, ETC.
- UNSURVEYED LINES
- LOT LINES
- PARCEL BOUNDARY
- MINING CLAIMS ETC.
- RAILWAY AND RIGHT OF WAY
- UTILITY LINES
- NON PERENNIAL STREAM
- FLOODING OR FLOODING RIGHTS
- SUBDIVISION OR COMPOSITE PLAN
- RESERVATIONS
- ORIGINAL SHORELINE
- MARSH OR MUSKEG
- MINES
- TRAVERSE MONUMENT

DISPOSITION OF CROWN LANDS

TYPE OF DOCUMENT	SYMBOL
PATENT, SURFACE & MINING RIGHTS	
" SURFACE RIGHTS ONLY	
" MINING RIGHTS ONLY	
LEASE, SURFACE & MINING RIGHTS	
" SURFACE RIGHTS ONLY	
" MINING RIGHTS ONLY	
LICENCE OF OCCUPATION	
ORDER IN COUNCIL	
RESERVATION	
CANCELLED	
SAND & GRAVEL	
LAND USE PERMITS FOR COMMERCIAL TOURISM/OUTPOST CAMPS	

NOTE: MINING RIGHTS IN PARCELS PATENTED PRIOR TO M.A.Y. 1913, VESTED IN ORIGINAL PATENTEES BY THE PUBLIC LANDS ACT, R.S.O. 1910, CHAP. 380, SEC. 63, SUBSEC. 1.



SCALE 1:20 000

THUNDER BAY
 MINING DIVISION
 RECEIVED
 OCT 19 1995
 AM 7,8,9,10,11,12,13,14,15,16 PM

"Summer Resort" Locations Not Open For Staking. Sec. 31 (c).

TOWNSHIP
JEAN
 M.N.R. ADMINISTRATIVE DISTRICT
 THUNDER BAY
 MINING DIVISION
 THUNDER BAY
 LAND TITLES / REGISTRY DIVISION
 THUNDER BAY

Ministry of Natural Resources Ontario
 Ministry of Northern Development and Mines

Date: SEPTEMBER, 1986. Number: **G-683**

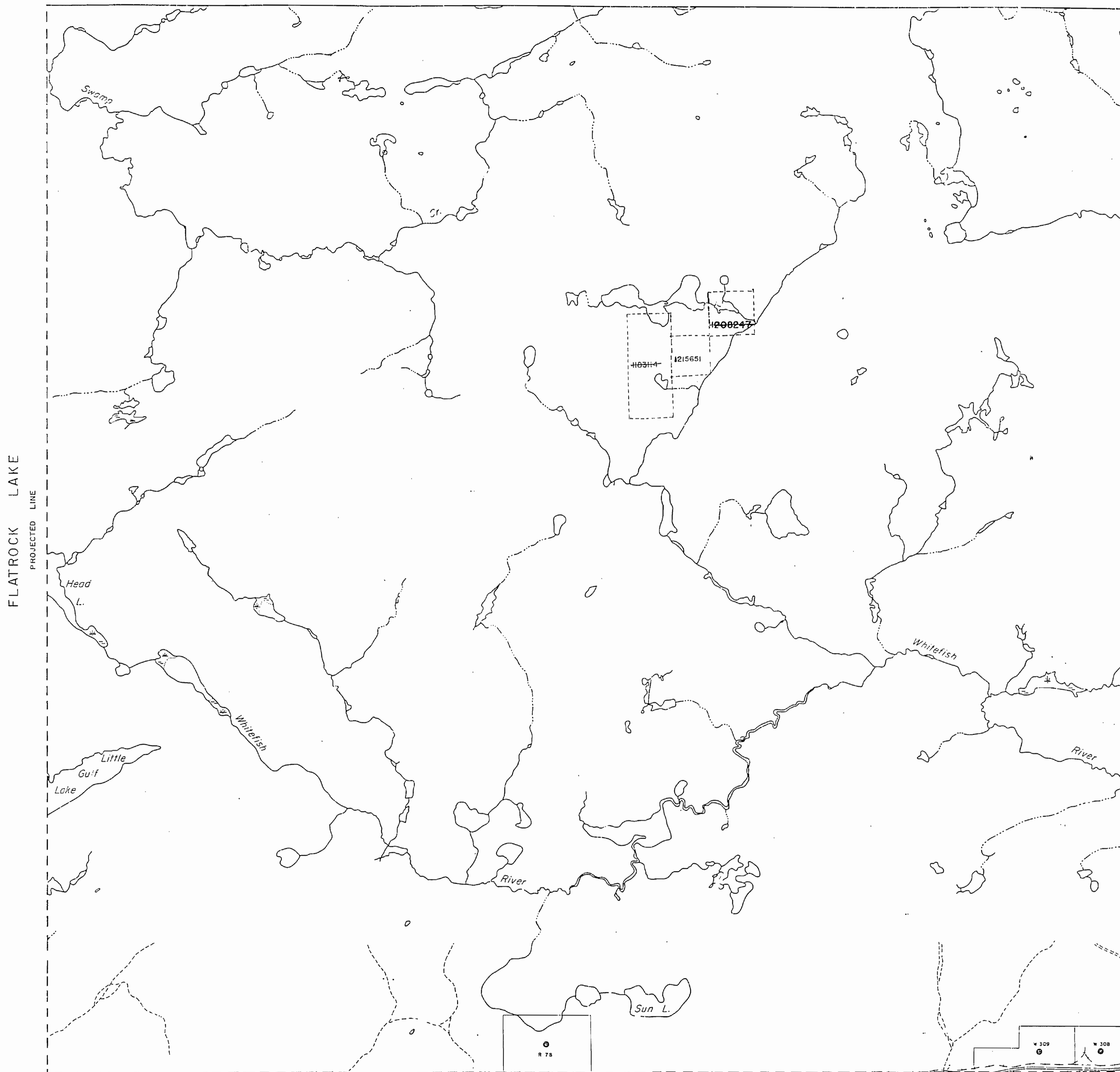
OCT 19, 1995

G-683

M.S. - MINING RIGHTS ONLY
 S.R. - SURFACE RIGHTS ONLY
 M.S. - MINING AND SURFACE RIGHTS

Disposition	Order No.	Date	Disposition	File

FLATROCK LAKE



FLATROCK LAKE
PROJECTED LINE

PROJECTED LINE
HARDWICK TOWNSHIP

STRANGE TOWNSHIP

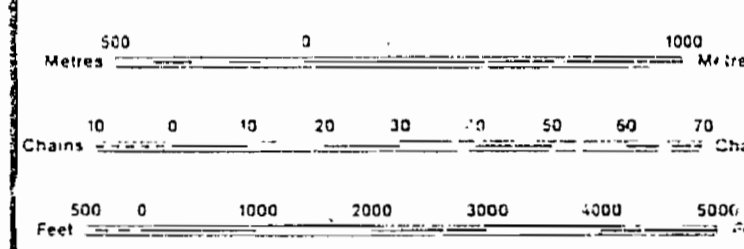
LEGEND

HIGHWAY AND ROUTE No.	
OTHER ROADS	
TRAILS	
SURVEYED LINES	
TOWNSHIPS, BASE LINES, ETC.	
LOTS, MINING CLAIMS, PARCELS, ETC.	
UN-SURVEYED LINES	
LOT LINES	
PARCEL BOUNDARY	
MINING CLAIMS ETC.	
RAILWAY AND RIGHT OF WAY	
UTILITY LINES	
NON-PERENNIAL STREAM	
FLOODING OR FLOODING RIGHTS	
SUBDIVISION OR COMPOSITE PLAN	
RESERVATIONS	
ORIGINAL SHORELINE	
MARSH OR MUSKEG	
MINES	
TRAVERSE MONUMENT	

DISPOSITION OF CROWN LANDS

TYPE OF DOCUMENT	SYMBOL
PATENT, SURFACE & MINING RIGHTS	
" SURFACE RIGHTS ONLY	
" MINING RIGHTS ONLY	
LEASE, SURFACE & MINING RIGHTS	
" SURFACE RIGHTS ONLY	
" MINING RIGHTS ONLY	
LICENCE OF OCCUPATION	
ORDER IN COUNCIL	
RESERVATION	
CANCELLED	
SAND & GRAVEL	
LAND USE PERMITS FOR COMMERCIAL TOURISM, OUTPOST CAMPS	

NOTE: MINING RIGHTS IN PARCELS PATENTED PRIOR TO MAY 1, 1915, VESTED IN ORIGINAL PATENTEES BY THE PUBLIC LANDS ACT, R.S.O. 1910, CHAP. 380, SEC. 63, SUBSEC. 1.



SCALE 1:20 000

DATE OF ISSUE
 MAR 16 1988
 PROVINCIAL RECORDING
 OFFICE - SUDBURY

*Summer Resort Locations Not Open For Staking - Sec. 31 (c).

TOWNSHIP
JEAN
 M.N.R. ADMINISTRATIVE DISTRICT
 THUNDER BAY
 MINING DIVISION
 THUNDER BAY
 LAND TITLES, REGISTRY DIVISION
 THUNDER BAY
 Nov 7, 1986

Ministry of Natural Resources
 Ministry of Northern Development and Mines

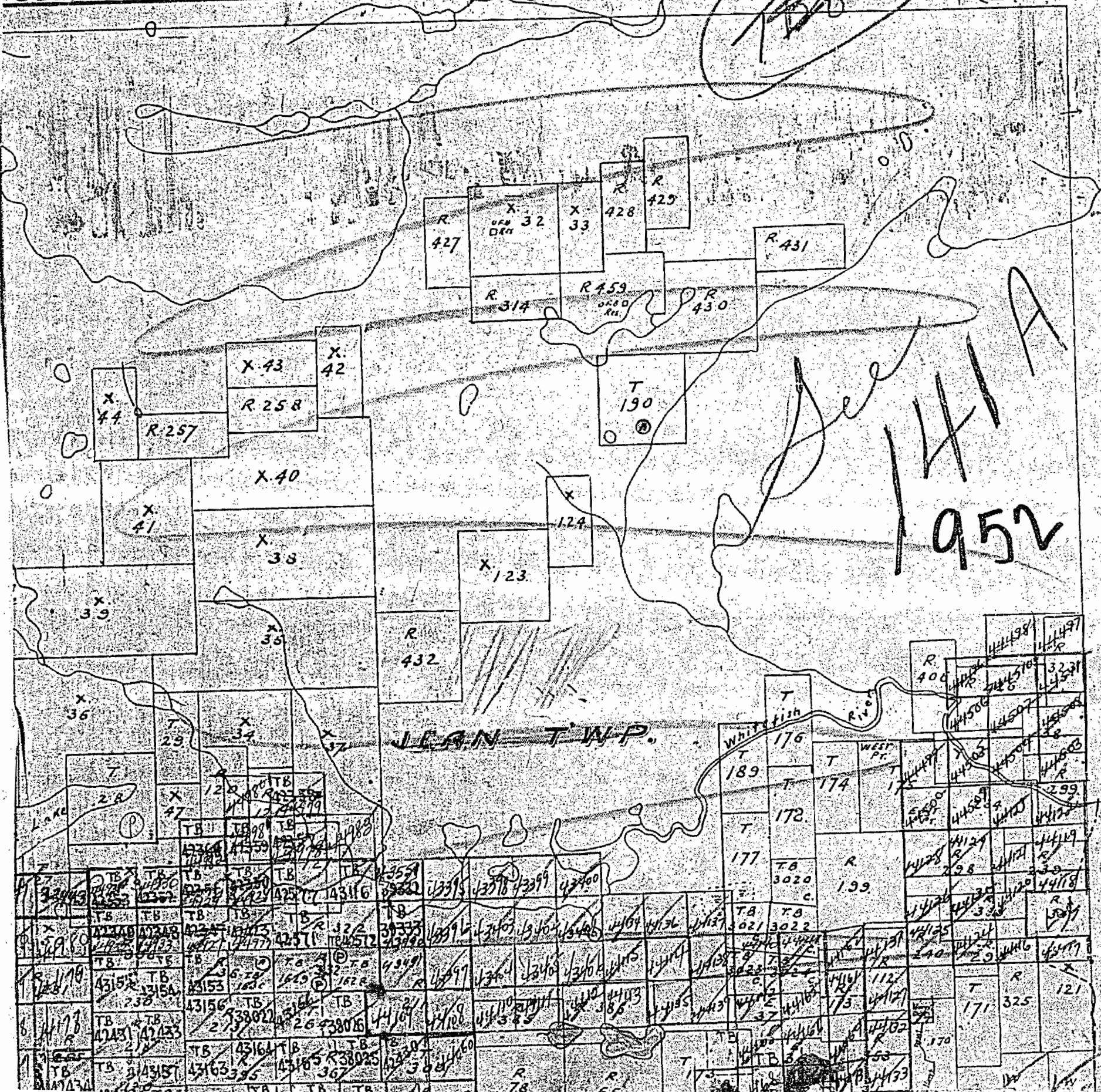
Date: SEPTEMBER, 1986. Number: **G-683**

1765

PLAN OF WHITEFISH LAKE AREA

OF THUNDER BAY. HUR MINING DIVISION.

Scale: 40 chains to an inch



Handwritten scribble

1952

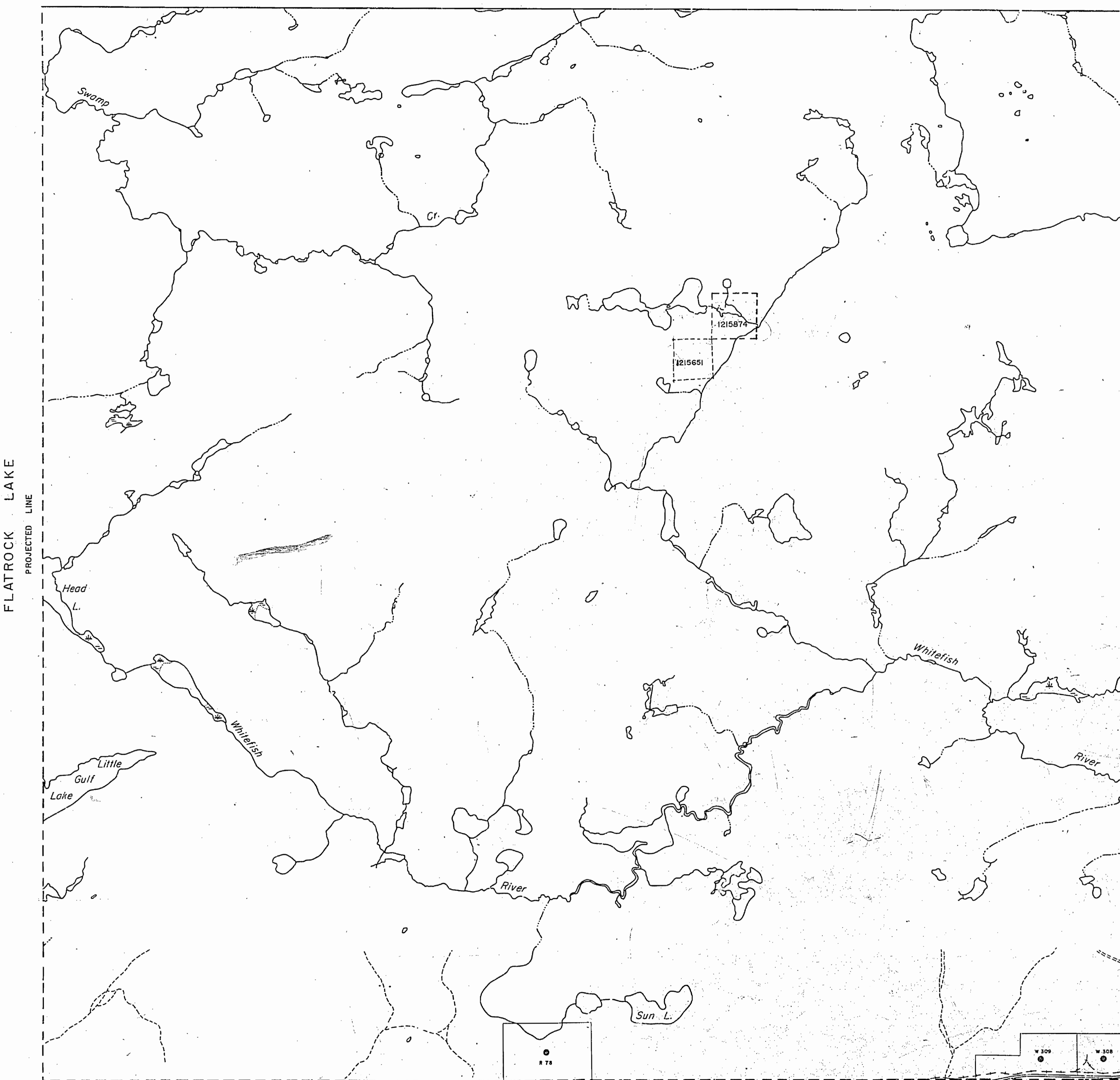
Handwritten notes

FLATROCK LAKE

DISPOSITION

M.R.O. - MINING RIGHTS ONLY
 S.R.O. - SURFACE RIGHTS ONLY
 M.S. - MINING AND SURFACE RIGHTS

Description	Order No.	Date	Disposition	File



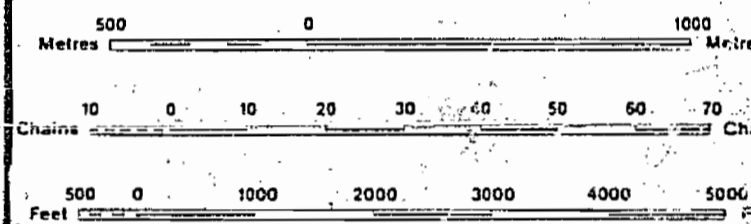
LEGEND

- HIGHWAY AND ROUTE No.
- OTHER ROADS
- TRAILS
- SURVEYED LINES:
 - TOWNSHIPS, BASE LINES, ETC.
 - LOTS, MINING CLAIMS, PARCELS, ETC.
- UNSURVEYED LINES:
 - LOT LINES
 - PARCEL BOUNDARY
 - MINING CLAIMS ETC.
- RAILWAY AND RIGHT OF WAY
- UTILITY LINES
- NON PERENNIAL STREAM
- FLOODING OR FLOODING RIGHTS
- SUBDIVISION OR COMPOSITE PLAN
- RESERVATIONS
- ORIGINAL SHORELINE
- MARSH OR MUSKEG
- MINES
- TRAVERSE MONUMENT

DISPOSITION OF CROWN LANDS

TYPE OF DOCUMENT	SYMBOL
PATENT, SURFACE & MINING RIGHTS	
" SURFACE RIGHTS ONLY	
" MINING RIGHTS ONLY	
LEASE, SURFACE & MINING RIGHTS	
" SURFACE RIGHTS ONLY	
" MINING RIGHTS ONLY	
LICENCE OF OCCUPATION	
ORDER-IN-COUNCIL	
RESERVATION	
CANCELLED	
SAND & GRAVEL	
LAND USE PERMITS FOR COMMERCIAL TOURISM, OUTPOST CAMPS	

NOTE: MINING RIGHTS IN PARCELS PATENTED PRIOR TO MAY 1, 1913, VESTED IN ORIGINAL PATENTEES BY THE PUBLIC LANDS ACT, R.S.O. 1970, CHAP. 380, SEC. 63, SUBSEC. 1.



SCALE 1:20 000

"Summer Resort" Locations Not Open For Staking. Sec. 31 (c).

TOWNSHIP

JEAN

M.N.R. ADMINISTRATIVE DISTRICT

THUNDER BAY

MINING DIVISION

THUNDER BAY

LAND TITLES / REGISTRY DIVISION

THUNDER BAY

Nov 7, 1986

Ministry of Natural Resources Ontario
 Ministry of Northern Development and Mines

D 31 SEPTEMBER, 1986

Number

G-683

PROJECTED LINE
 HARDWICK TOWNSHIP

FLATROCK LAKE
 PROJECTED LINE

STRANGE TOWNSHIP

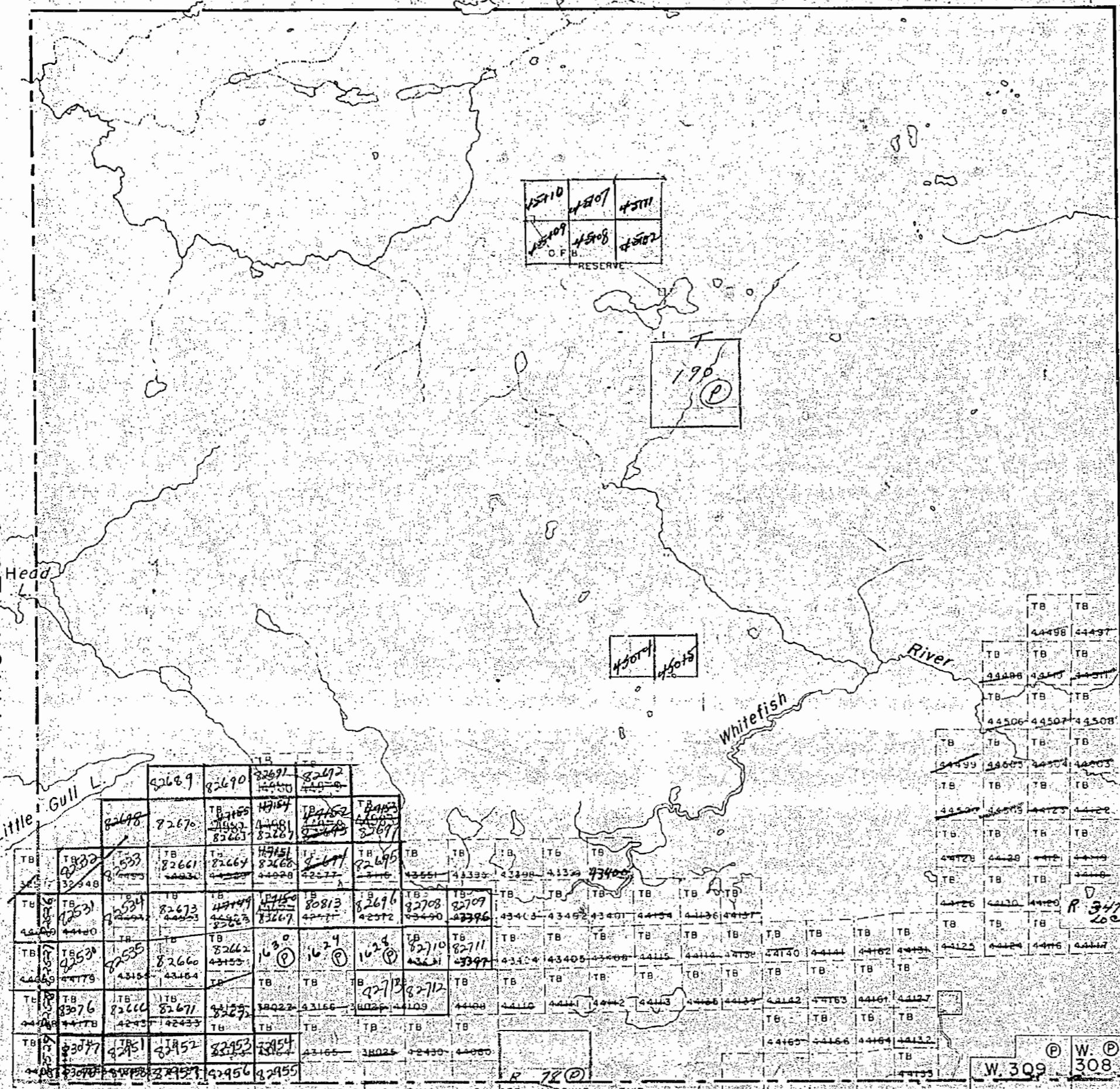
1765

A.D.I. BT. PWT. MAIL

PORT ARTHUR
RECEIVED
AUG 21 1952
MINING DIVISION

Arrow Lake Area

Strange Twp.



THE TOWNSHIP
OF

JEAN

DISTRICT OF
THUNDER BAY

THUNDER BAY
MINING DIVISION

SCALE 1-INCH=40 CHAINS

LEGEND

- | | |
|-----------------------|--------|
| PATENTED LAND | Ⓟ |
| CROWN LAND SALE | Ⓢ or Ⓣ |
| LEASES | Ⓛ |
| LOCATED LAND | Loc. |
| LICENSE OF OCCUPATION | L.O. |
| MINING RIGHTS ONLY | M.R.O. |
| SURFACE RIGHTS ONLY | S.R.O. |
| ROADS | — |
| IMPROVED ROADS | — |
| KING'S HIGHWAYS | — |
| RAILWAYS | — |
| POWER LINES | — |
| MARSH OR MUSKOG | — |
| MINES | X |

NOTES

Area Reserved to Dept of Highway
Shown Thus -

Abandoned Railway Shown Thus -

M1765

###

1952

PLAN NO.-141A

DEPARTMENT OF MINES
—ONTARIO—

PORT ARTHUR
RECEIVED
AUG 21 1952
MINING DIVISION

Hardwick Twp.

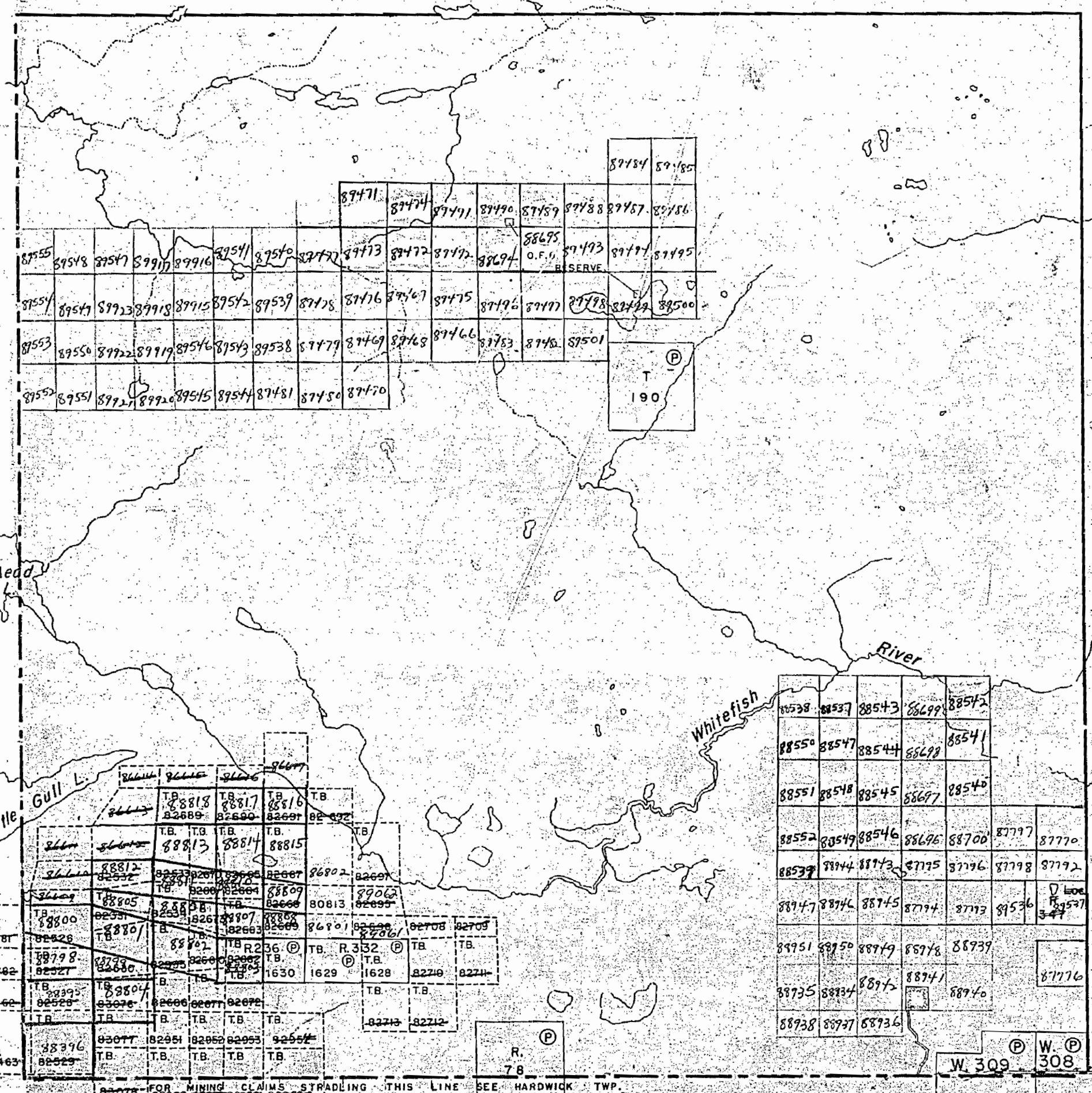
FOR MINING CLAIMS STRADDLING THIS LINE SEE HARDWICK TWP

1765

JEAN TWP

Arrow Lake Area

Strange Twp.



THE TOWNSHIP
OF
JEAN
DISTRICT OF
THUNDER BAY
THUNDER BAY
MINING DIVISION

SCALE: 1-INCH= 40 CHAINS

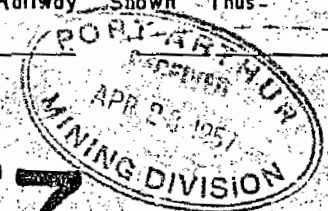
LEGEND

- PATENTED LAND
 - CROWN LAND SALE
 - LEASES
 - LOCATED LAND
 - LICENSE OF OCCUPATION
 - MINING RIGHTS ONLY
 - SURFACE RIGHTS ONLY
 - ROADS
 - IMPROVED ROADS
 - KING'S HIGHWAYS
 - RAILWAYS
 - POWER LINES
 - MARSH OR MUSKEG
 - MINES
- ⊙ or ⊚ C.S.
 - ⊙ Loc
 - ⊙ L.O.
 - ⊙ M.R.O.
 - ⊙ S.R.O.

NOTES

Area Reserved to Dept of Highway
Shown Thus - [Symbol]

Abandoned Railway Shown Thus - [Symbol]



1957
m1765
141A

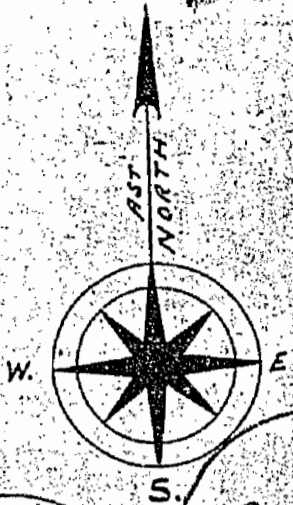
PLAN
DEPARTMENT OF MINES
—ONTARIO—

B.D.

1765

PLAN OF WITTEFISH LAKE AREA

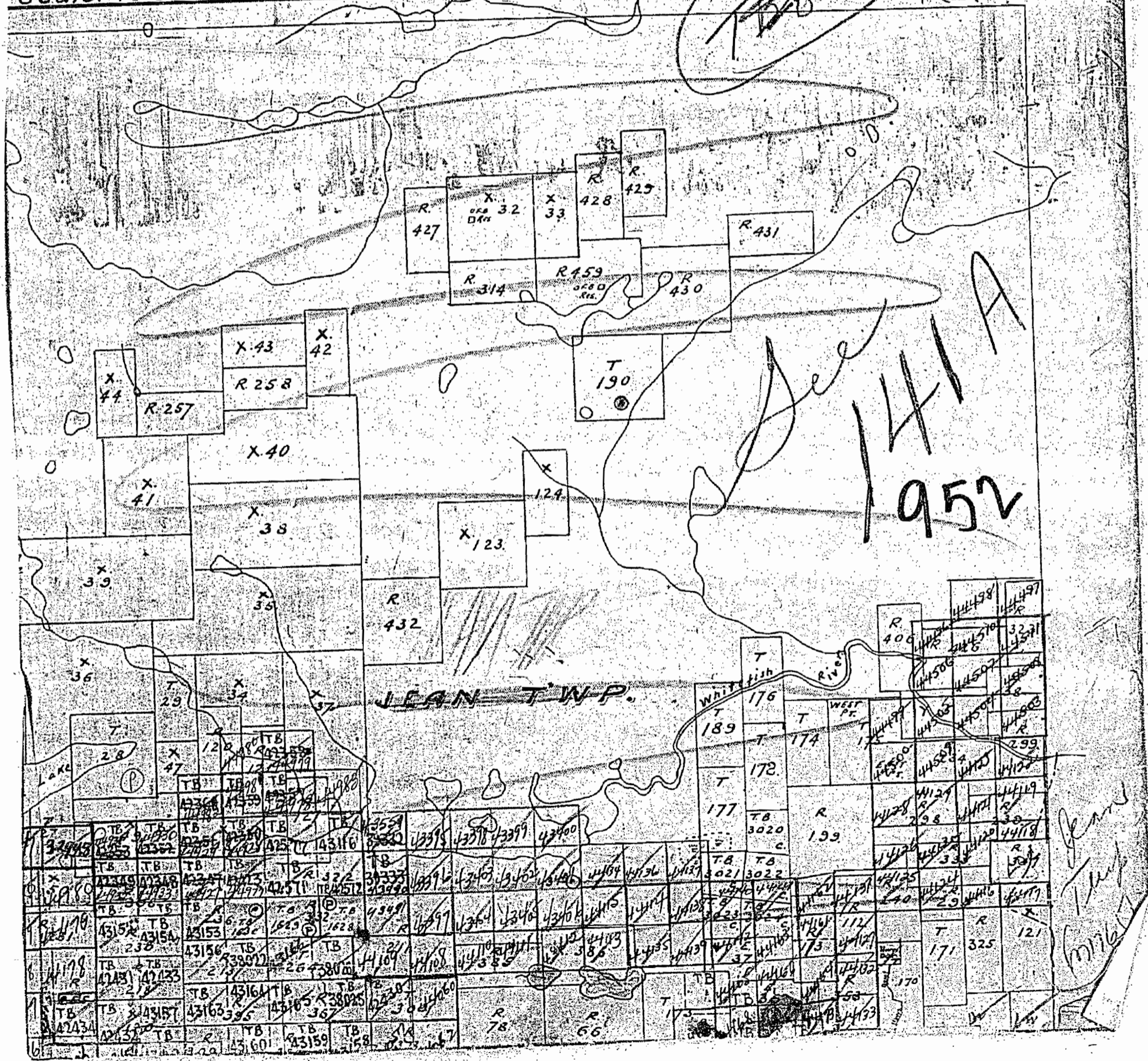
PORT ARTHUR
RECEIVED
FEB 4 1952
MINING DIVISION



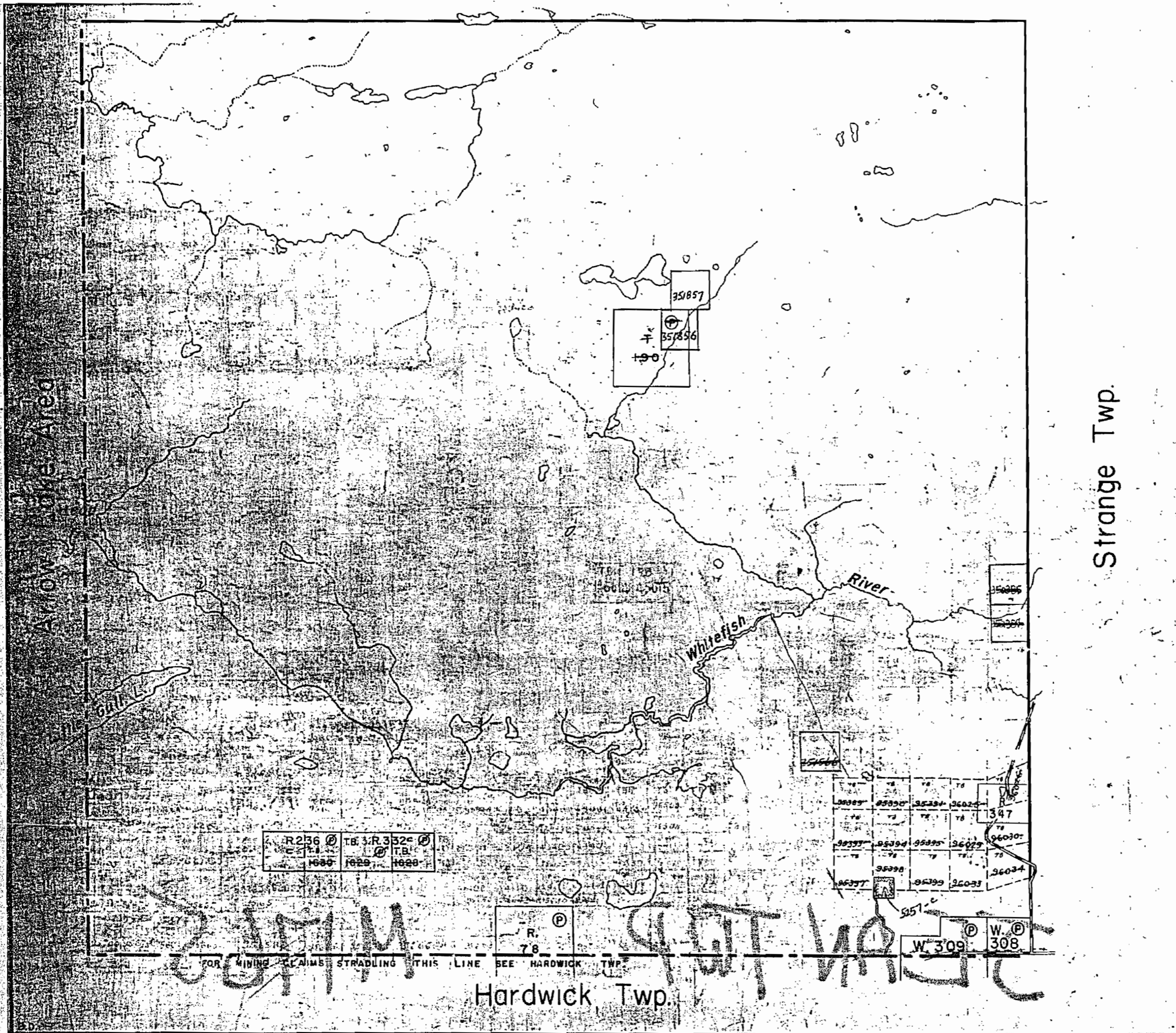
OF THUNDER BAY. HUR MINING DIVISION.

Scale: 40 chains to an inch

Handwritten: 1762 (circled), 21 (circled)



1765



THE TOWNSHIP
OF
JEAN
DISTRICT OF
THUNDER BAY
THUNDER BAY
MINING DIVISION
SCALE: 1-INCH= 40 CHAINS

LEGEND

PATENTED LAND	Ⓟ
CROWN LAND SALE	Ⓢ or C.S.
LEASES	Ⓛ
LOCATED LAND	Loc.
LICENSE OF OCCUPATION	L.O.
MINING RIGHTS ONLY	M.R.O.
SURFACE RIGHTS ONLY	S.R.O.
ROADS	—
IMPROVED ROADS	—
KING'S HIGHWAYS	—
RAILWAYS	—
POWER LINES	—
MARSH OR MUSKEG	—
MINES	—

NOTES

Area Reserved to Dept. of Highway
Shown Thus ———

Abandoned Railway Shown Thus ———

400' SURFACE RIGHTS RESERVATION
AROUND ALL LAKES & RIVERS

1965

PLAN M. 1765
DEPARTMENT OF MINES
—ONTARIO—

Strange Twp.

Hardwick Twp.

FOR MINING CLAIMS STRADLING THIS LINE SEE HARDWICK TWP.

THE TOWNSHIP OF
OF

JEAN

DISTRICT OF
THUNDER BAY

THUNDER BAY
MINING DIVISION

SCALE: 1-INCH=40 CHAINS

LEGEND

- PATENTED LAND Ⓟ
- CROWN LAND SALE Ⓢ or C.S.
- LEASES Ⓞ
- LOCATED LAND Loc.
- LICENSE OF OCCUPATION L.O.
- MINING RIGHTS ONLY M.R.O.
- SURFACE RIGHTS ONLY S.R.O.
- ROADS —
- IMPROVED ROADS —
- KING'S HIGHWAYS —
- RAILWAYS —
- POWER LINES —
- MARSH OR MUSKEG —
- MINES X

NOTES

Area Reserved to Dept. of Highway

Shown Thus -

Abandoned Railway Shown Thus -

*□ Includes 1/2 Townships - Township of Cabin
Cancelled - see letter J.R. to C.M. 11/60*

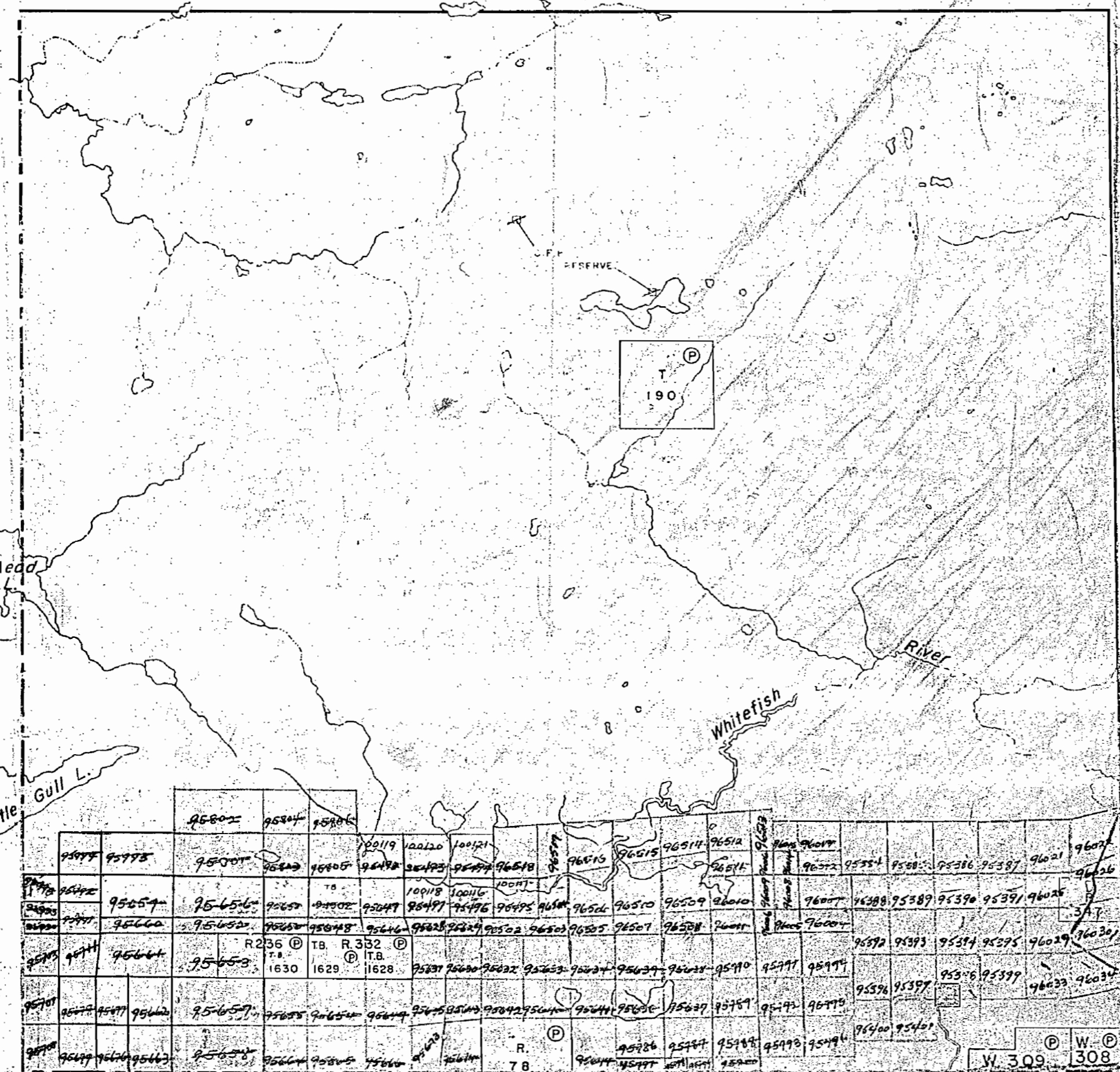
1959

PLAN M1765

DEPARTMENT OF MINES
— ONTARIO —

Arrow Lake Area

Strange Twp.



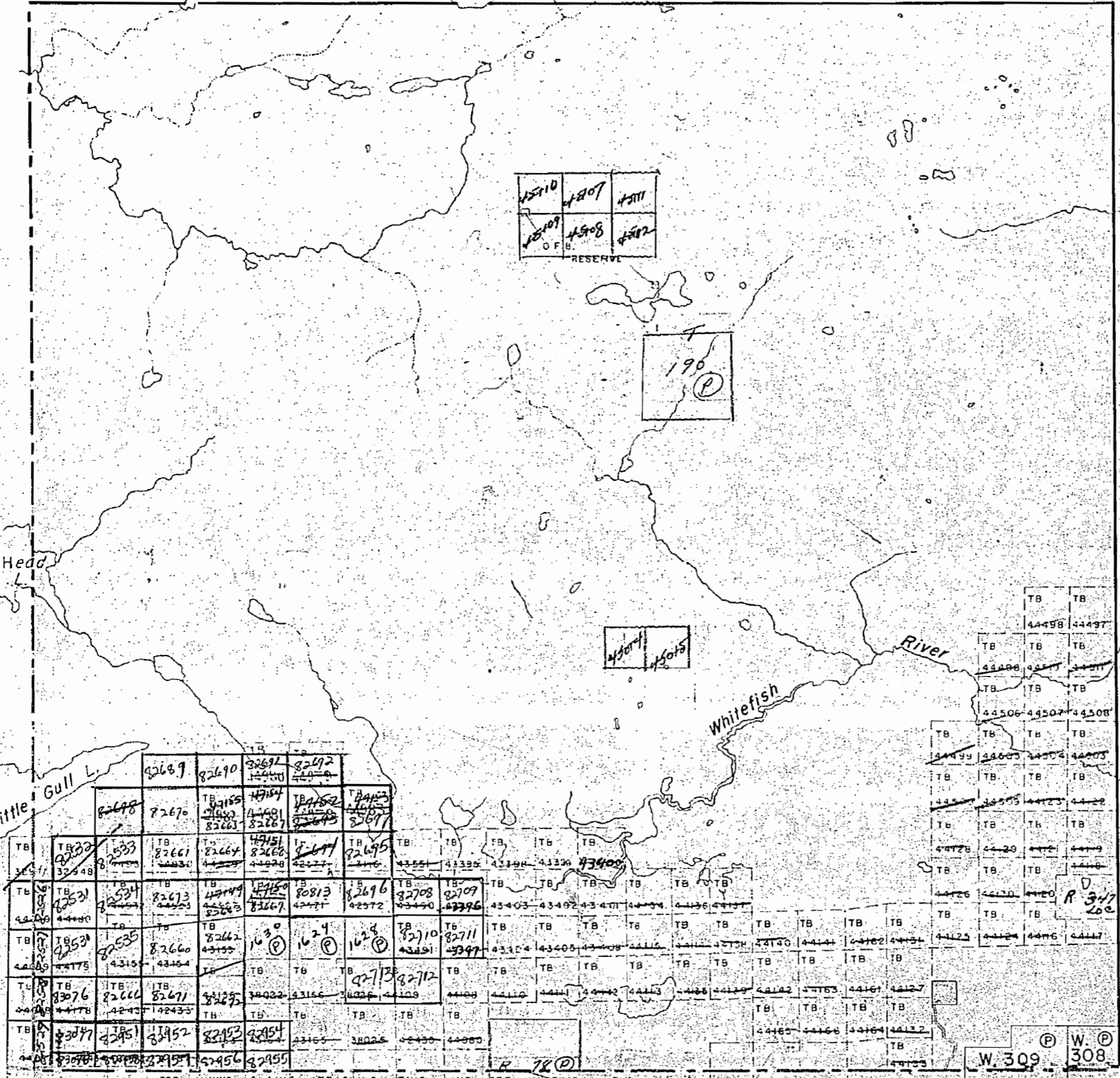
95977	95978	95979	95980	95981	95982	95983	95984	95985	95986	95987	95988	95989	95990	95991	95992	95993	95994	95995	95996	95997	95998	95999	96000	96001	96002	96003	96004	96005	96006	96007	96008	96009	96010	96011	96012	96013	96014	96015	96016	96017	96018	96019	96020	96021	96022	96023	96024	96025	96026	96027	96028	96029	96030	96031	96032	96033	96034	96035	96036	96037	96038	96039	96040	96041	96042	96043	96044	96045	96046	96047	96048	96049	96050	96051	96052	96053	96054	96055	96056	96057	96058	96059	96060	96061	96062	96063	96064	96065	96066	96067	96068	96069	96070	96071	96072	96073	96074	96075	96076	96077	96078	96079	96080	96081	96082	96083	96084	96085	96086	96087	96088	96089	96090	96091	96092	96093	96094	96095	96096	96097	96098	96099	96100	96101	96102	96103	96104	96105	96106	96107	96108	96109	96110	96111	96112	96113	96114	96115	96116	96117	96118	96119	96120	96121	96122	96123	96124	96125	96126	96127	96128	96129	96130	96131	96132	96133	96134	96135	96136	96137	96138	96139	96140	96141	96142	96143	96144	96145	96146	96147	96148	96149	96150	96151	96152	96153	96154	96155	96156	96157	96158	96159	96160	96161	96162	96163	96164	96165	96166	96167	96168	96169	96170	96171	96172	96173	96174	96175	96176	96177	96178	96179	96180	96181	96182	96183	96184	96185	96186	96187	96188	96189	96190	96191	96192	96193	96194	96195	96196	96197	96198	96199	96200	96201	96202	96203	96204	96205	96206	96207	96208	96209	96210	96211	96212	96213	96214	96215	96216	96217	96218	96219	96220	96221	96222	96223	96224	96225	96226	96227	96228	96229	96230	96231	96232	96233	96234	96235	96236	96237	96238	96239	96240	96241	96242	96243	96244	96245	96246	96247	96248	96249	96250	96251	96252	96253	96254	96255	96256	96257	96258	96259	96260	96261	96262	96263	96264	96265	96266	96267	96268	96269	96270	96271	96272	96273	96274	96275	96276	96277	96278	96279	96280	96281	96282	96283	96284	96285	96286	96287	96288	96289	96290	96291	96292	96293	96294	96295	96296	96297	96298	96299	96300	96301	96302	96303	96304	96305	96306	96307	96308	96309	96310	96311	96312	96313	96314	96315	96316	96317	96318	96319	96320	96321	96322	96323	96324	96325	96326	96327	96328	96329	96330	96331	96332	96333	96334	96335	96336	96337	96338	96339	96340	96341	96342	96343	96344	96345	96346	96347	96348	96349	96350	96351	96352	96353	96354	96355	96356	96357	96358	96359	96360	96361	96362	96363	96364	96365	96366	96367	96368	96369	96370	96371	96372	96373	96374	96375	96376	96377	96378	96379	96380	96381	96382	96383	96384	96385	96386	96387	96388	96389	96390	96391	96392	96393	96394	96395	96396	96397	96398	96399	96400	96401	96402	96403	96404	96405	96406	96407	96408	96409	96410	96411	96412	96413	96414	96415	96416	96417	96418	96419	96420	96421	96422	96423	96424	96425	96426	96427	96428	96429	96430	96431	96432	96433	96434	96435	96436	96437	96438	96439	96440	96441	96442	96443	96444	96445	96446	96447	96448	96449	96450	96451	96452	96453	96454	96455	96456	96457	96458	96459	96460	96461	96462	96463	96464	96465	96466	96467	96468	96469	96470	96471	96472	96473	96474	96475	96476	96477	96478	96479	96480	96481	96482	96483	96484	96485	96486	96487	96488	96489	96490	96491	96492	96493	96494	96495	96496	96497	96498	96499	96500	96501	96502	96503	96504	96505	96506	96507	96508	96509	96510	96511	96512	96513	96514	96515	96516	96517	96518	96519	96520	96521	96522	96523	96524	96525	96526	96527	96528	96529	96530	96531	96532	96533	96534	96535	96536	96537	96538	96539	96540	96541	96542	96543	96544	96545	96546	96547	96548	96549	96550	96551	96552	96553	96554	96555	96556	96557	96558	96559	96560	96561	96562	96563	96564	96565	96566	96567	96568	96569	96570	96571	96572	96573	96574	96575	96576	96577	96578	96579	96580	96581	96582	96583	96584	96585	96586	96587	96588	96589	96590	96591	96592	96593	96594	96595	96596	96597	96598	96599	96600	96601	96602	96603	96604	96605	96606	96607	96608	96609	96610	96611	96612	96613	96614	96615	96616	96617	96618	96619	96620	96621	96622	96623	96624	96625	96626	96627	96628	96629	96630	96631	96632	96633	96634	96635	96636	96637	96638	96639	96640	96641	96642	96643	96644	96645	96646	96647	96648	96649	96650	96651	96652	96653	96654	96655	96656	96657	96658	96659	96660	96661	96662	96663	96664	96665	96666	96667	96668	96669	96670	96671	96672	96673	96674	96675	96676	96677	96678	96679	96680	96681	96682	96683	96684	96685	96686	96687	96688	96689	96690	96691	96692	96693	96694	96695	96696	96697	96698	96699	96700	96701	96702	96703	96704	96705	96706	96707	96708	96709	96710	96711	96712	96713	96714	96715	96716	96717	96718	96719	96720	96721	96722	96723	96724	96725	96726	96727	96728	96729	96730	96731	96732	96733	96734	96735	96736	96737	96738	96739	96740	96741	96742	96743	96744	96745	96746	96747	96748	96749	96750	96751	96752	96753	96754	96755	96756	96757	96758	96759	96760	96761	96762	96763	96764	96765	96766	96767	96768	96769	96770	96771	96772	96773	96774	96775	96776	96777	96778	96779	96780	96781	96782	96783	96784	96785	96786	96787	96788	96789	96790	96791	96792	96793	96794	96795	96796	96797	96798	96799	96800	96801	96802	96803	96804	96805	96806	96807	96808	96809	96810	96811	96812	96813	96814	96815	96816	96817	96818	96819	96820	96821	96822	96823	96824	96825	96826	96827	96828	96829	96830	96831	96832	96833	96834	96835	96836	96837	96838	96839	96840	96841	96842	96843	96844	96845	96846	96847	96848	96849	96850	96851	96852	96853	96854	96855	96856	96857	96858	96859	96860	96861	96862	96863	96864	96865	96866	96867	96868	96869	96870	96871	96872	96873	96874	96875	96876	96877	96878	96879	96880	96881	96882	96883	96884	96885	96886	96887	96888	96889	96890	96891	96892	96893	96894	96895	96896	96897	96898	96899	96900	96901	96902	96903	96904	96905	96906	96907	96908	96909	96910	96911	96912	96913	96914	96915	96916	96917	96918	96919	96920	96921	96922	96923	96924	96925	96926	96927	96928	96929	96930	96931	96932	96933	96934	96935	96936	96937	96938	96939	96940	96941	96942	96943	96944	96945	96946	96947	96948	96949	96950	96951	96952	96953	96954	96955	96956	96957	96958	96959	96960	96961	96962	96963	96964	96965	96966	96967	96968	96969	96970	96971	96972	96973	96974
-------	-------	-------	-------	-------	-------	-------	-------	-------	-------	-------	-------	-------	-------	-------	-------	-------	-------	-------	-------	-------	-------	-------	-------	-------	-------	-------	-------	-------	-------	-------	-------	-------	-------	-------	-------	-------	-------	-------	-------	-------	-------	-------	-------	-------	-------	-------	-------	-------	-------	-------	-------	-------	-------	-------	-------	-------	-------	-------	-------	-------	-------	-------	-------	-------	-------	-------	-------	-------	-------	-------	-------	-------	-------	-------	-------	-------	-------	-------	-------	-------	-------	-------	-------	-------	-------	-------	-------	-------	-------	-------	-------	-------	-------	-------	-------	-------	-------	-------	-------	-------	-------	-------	-------	-------	-------	-------	-------	-------	-------	-------	-------	-------	-------	-------	-------	-------	-------	-------	-------	-------	-------	-------	-------	-------	-------	-------	-------	-------	-------	-------	-------	-------	-------	-------	-------	-------	-------	-------	-------	-------	-------	-------	-------	-------	-------	-------	-------	-------	-------	-------	-------	-------	-------	-------	-------	-------	-------	-------	-------	-------	-------	-------	-------	-------	-------	-------	-------	-------	-------	-------	-------	-------	-------	-------	-------	-------	-------	-------	-------	-------	-------	-------	-------	-------	-------	-------	-------	-------	-------	-------	-------	-------	-------	-------	-------	-------	-------	-------	-------	-------	-------	-------	-------	-------	-------	-------	-------	-------	-------	-------	-------	-------	-------	-------	-------	-------	-------	-------	-------	-------	-------	-------	-------	-------	-------	-------	-------	-------	-------	-------	-------	-------	-------	-------	-------	-------	-------	-------	-------	-------	-------	-------	-------	-------	-------	-------	-------	-------	-------	-------	-------	-------	-------	-------	-------	-------	-------	-------	-------	-------	-------	-------	-------	-------	-------	-------	-------	-------	-------	-------	-------	-------	-------	-------	-------	-------	-------	-------	-------	-------	-------	-------	-------	-------	-------	-------	-------	-------	-------	-------	-------	-------	-------	-------	-------	-------	-------	-------	-------	-------	-------	-------	-------	-------	-------	-------	-------	-------	-------	-------	-------	-------	-------	-------	-------	-------	-------	-------	-------	-------	-------	-------	-------	-------	-------	-------	-------	-------	-------	-------	-------	-------	-------	-------	-------	-------	-------	-------	-------	-------	-------	-------	-------	-------	-------	-------	-------	-------	-------	-------	-------	-------	-------	-------	-------	-------	-------	-------	-------	-------	-------	-------	-------	-------	-------	-------	-------	-------	-------	-------	-------	-------	-------	-------	-------	-------	-------	-------	-------	-------	-------	-------	-------	-------	-------	-------	-------	-------	-------	-------	-------	-------	-------	-------	-------	-------	-------	-------	-------	-------	-------	-------	-------	-------	-------	-------	-------	-------	-------	-------	-------	-------	-------	-------	-------	-------	-------	-------	-------	-------	-------	-------	-------	-------	-------	-------	-------	-------	-------	-------	-------	-------	-------	-------	-------	-------	-------	-------	-------	-------	-------	-------	-------	-------	-------	-------	-------	-------	-------	-------	-------	-------	-------	-------	-------	-------	-------	-------	-------	-------	-------	-------	-------	-------	-------	-------	-------	-------	-------	-------	-------	-------	-------	-------	-------	-------	-------	-------	-------	-------	-------	-------	-------	-------	-------	-------	-------	-------	-------	-------	-------	-------	-------	-------	-------	-------	-------	-------	-------	-------	-------	-------	-------	-------	-------	-------	-------	-------	-------	-------	-------	-------	-------	-------	-------	-------	-------	-------	-------	-------	-------	-------	-------	-------	-------	-------	-------	-------	-------	-------	-------	-------	-------	-------	-------	-------	-------	-------	-------	-------	-------	-------	-------	-------	-------	-------	-------	-------	-------	-------	-------	-------	-------	-------	-------	-------	-------	-------	-------	-------	-------	-------	-------	-------	-------	-------	-------	-------	-------	-------	-------	-------	-------	-------	-------	-------	-------	-------	-------	-------	-------	-------	-------	-------	-------	-------	-------	-------	-------	-------	-------	-------	-------	-------	-------	-------	-------	-------	-------	-------	-------	-------	-------	-------	-------	-------	-------	-------	-------	-------	-------	-------	-------	-------	-------	-------	-------	-------	-------	-------	-------	-------	-------	-------	-------	-------	-------	-------	-------	-------	-------	-------	-------	-------	-------	-------	-------	-------	-------	-------	-------	-------	-------	-------	-------	-------	-------	-------	-------	-------	-------	-------	-------	-------	-------	-------	-------	-------	-------	-------	-------	-------	-------	-------	-------	-------	-------	-------	-------	-------	-------	-------	-------	-------	-------	-------	-------	-------	-------	-------	-------	-------	-------	-------	-------	-------	-------	-------	-------	-------	-------	-------	-------	-------	-------	-------	-------	-------	-------	-------	-------	-------	-------	-------	-------	-------	-------	-------	-------	-------	-------	-------	-------	-------	-------	-------	-------	-------	-------	-------	-------	-------	-------	-------	-------	-------	-------	-------	-------	-------	-------	-------	-------	-------	-------	-------	-------	-------	-------	-------	-------	-------	-------	-------	-------	-------	-------	-------	-------	-------	-------	-------	-------	-------	-------	-------	-------	-------	-------	-------	-------	-------	-------	-------	-------	-------	-------	-------	-------	-------	-------	-------	-------	-------	-------	-------	-------	-------	-------	-------	-------	-------	-------	-------	-------	-------	-------	-------	-------	-------	-------	-------	-------	-------	-------	-------	-------	-------	-------	-------	-------	-------	-------	-------	-------	-------	-------	-------	-------	-------	-------	-------	-------	-------	-------	-------	-------	-------	-------	-------	-------	-------	-------	-------	-------	-------	-------	-------	-------	-------	-------	-------	-------	-------	-------	-------	-------	-------	-------	-------	-------	-------	-------	-------	-------	-------	-------	-------	-------	-------	-------	-------	-------	-------	-------	-------	-------	-------	-------	-------	-------	-------	-------	-------	-------	-------	-------	-------	-------	-------	-------	-------	-------	-------	-------	-------	-------	-------	-------	-------	-------	-------	-------	-------	-------	-------	-------	-------	-------	-------	-------	-------	-------	-------	-------	-------	-------	-------	-------	-------	-------	-------	-------	-------	-------	-------	-------	-------	-------	-------	-------	-------	-------	-------	-------	-------	-------	-------	-------	-------	-------	-------	-------	-------	-------	-------	-------	-------	-------	-------	-------	-------	-------	-------	-------	-------	-------	-------	-------	-------	-------	-------	-------	-------	-------	-------	-------	-------	-------	-------	-------	-------	-------	-------	-------	-------	-------	-------	-------	-------	-------	-------	-------	-------	-------	-------	-------	-------	-------	-------	-------	-------	-------	-------	-------	-------	-------	-------	-------	-------	-------	-------	-------	-------	-------	-------	-------	-------	-------	-------	-------	-------	-------	-------	-------	-------	-------

1765

TEAM TWP. 141

PORT ARTHUR
RECEIVED
AUG 21 1952
MINING DIVISION

Arrow Lake Area



Hardwick Twp.

Strange Twp.

THE TOWNSHIP
OF
PORT ARTHUR
RECEIVED
AUG 21 1952
MINING DIVISION

JEAN

DISTRICT OF
THUNDER BAY

THUNDER BAY
MINING DIVISION

SCALE: 1-INCH= 40 CHAINS

LEGEND

- PATENTED LAND ⊕
- CROWN LAND SALE ⊙ or C.S.
- LEASES ⊖
- LOCATED LAND Loc.
- LICENSE OF OCCUPATION L.O.
- MINING RIGHTS ONLY M.R.O.
- SURFACE RIGHTS ONLY S.R.O.
- ROADS —
- IMPROVED ROADS —
- KING'S HIGHWAYS —
- RAILWAYS —
- POWER LINES —
- MARSH OR MUSKEG —
- MINES *

NOTES

Area Reserved to Dept of Highway
Shown Thus: ———

Abandoned Railway Shown Thus: ———

M1765

1952

PLAN NO. - 141 A

DEPARTMENT OF MINES
— ONTARIO —

PORT ARTHUR
RECEIVED
AUG 21 1952
MINING DIVISION