

CARILLON LAKE AREA M.1973

AREA OF

KEIGAT LAKE

DATE OF ISSUE
 SEP 21 1998
 DISTRICT OF KENORA
 PROVINCIAL RECORDS (PARTIAL PORTION)
 OFFICE - SUDBURY

RED LAKE
 MINING DIVISION

SCALE: 1-INCH = 40 CHAINS

LEGEND

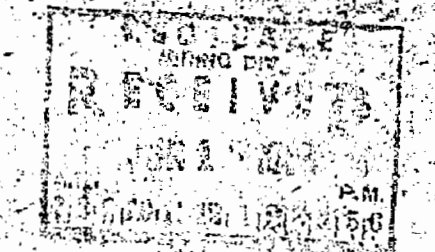
- PATENTED LAND Ⓟ C.S.
- CROWN LAND SALE Ⓞ Loc.
- LEASES Ⓞ L.O.
- LOCATED LAND Ⓞ M.R.O.
- LICENSE OF OCCUPATION Ⓞ S.R.O.
- MINING RIGHTS ONLY
- SURFACE RIGHTS ONLY
- ROADS
- IMPROVED ROADS
- KING'S HIGHWAYS
- RAILWAYS
- POWER LINES
- MARSH OR MUSKEG
- MINES
- CANCELLED
- PATENT SURFACE RIGHTS ONLY

NOTES

400' surface rights reservation along the shores of all lakes and rivers.

REMOTE TOURISM SITE Ⓜ

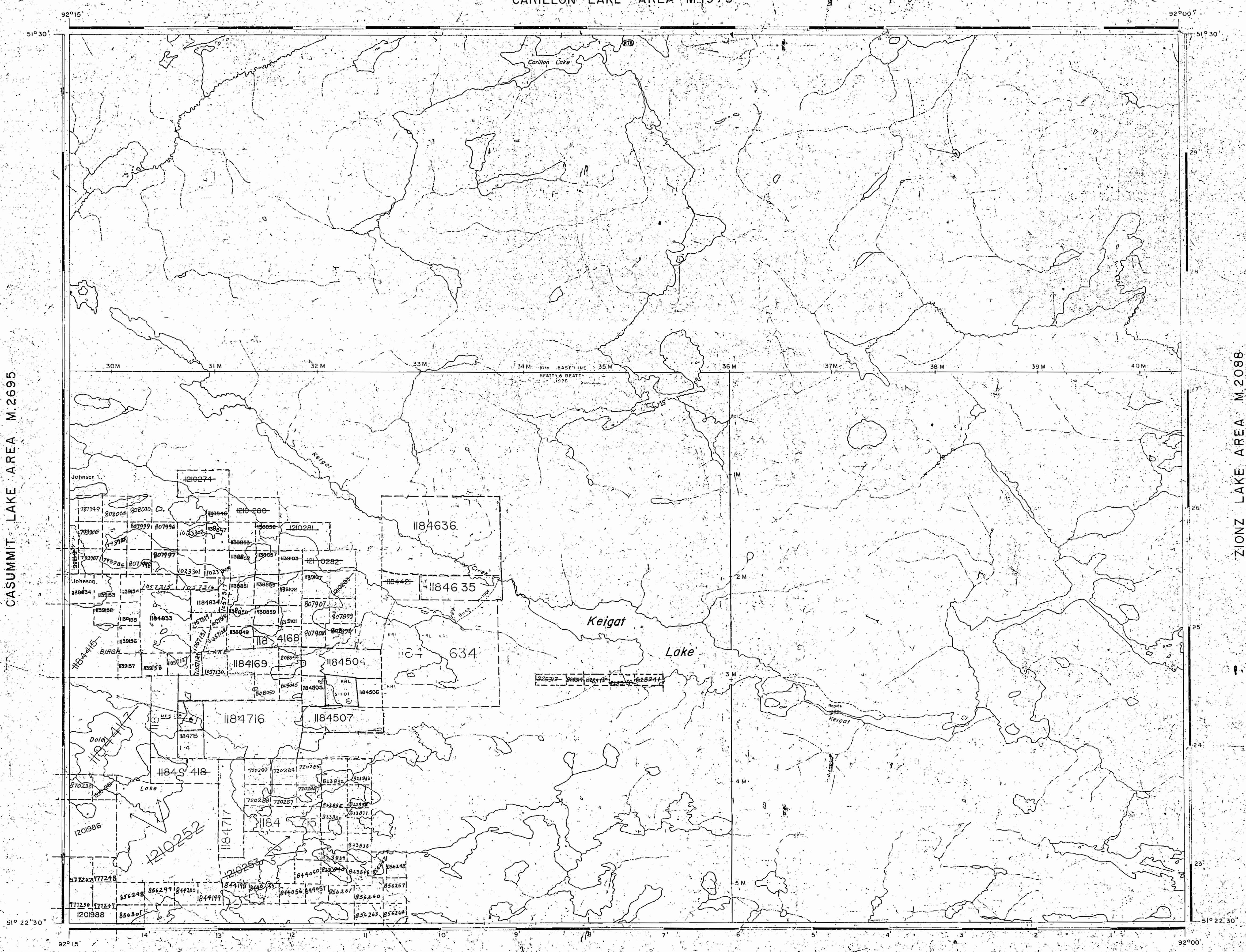
THE INFORMATION THAT APPEARS ON THIS MAP HAS BEEN COMPILED FROM VARIOUS SOURCES AND ACCURACY IS NOT GUARANTEED. THOSE WISHING TO STAKE MINING CLAIMS SHOULD CONSULT WITH THE MINING RECORDER, MINISTRY OF NORTHERN DEVELOPMENT AND MINES, FOR ADDITIONAL INFORMATION ON THE STATUS OF THE LANDS SHOWN HEREON.



NATIONAL TOPOGRAPHIC SERIES 52 N 8

PLAN NO. **G-2086**

ONTARIO
 MINISTRY OF NATURAL RESOURCES
 SURVEYS AND MAPPING BRANCH



CASUMMIT LAKE AREA M.2695

ZIONZ LAKE AREA M.2088

SEAGRAVE LAKE AREA M.2685

KEIGAT LAKE

080

080

KEIGAT LAKE

DISTRICT OF
KENORA
(PATRICIA PORTION)

RED LAKE
MINING DIVISION

SCALE: 1-INCH = 40 CHAINS

LEGEND

PATENTED LAND	⊙
CROWN LAND SALE	C.S.
LEASES	⊖
LOCATED LAND	Loc.
LICENSE OF OCCUPATION	L.O.
MINING RIGHTS ONLY	M.R.O.
SURFACE RIGHTS ONLY	S.R.O.
ROADS	—
IMPROVED ROADS	—
KING'S HIGHWAYS	—
RAILWAYS	—
POWER LINES	—
MARSH OR MUSKEG	—
MINES	⋈
CANCELLED	C.
PATENT SURFACE RIGHTS ONLY	⊖

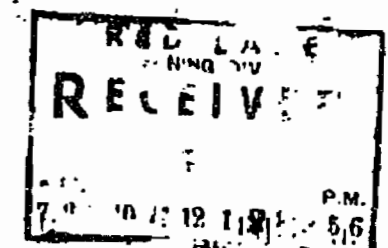
NOTES

400' surface rights reservation along the shores of all lakes and rivers.

REMOTE TOURISM SITE



THE INFORMATION THAT APPEARS ON THIS MAP HAS BEEN COMPILED FROM VARIOUS SOURCES, AND ACCURACY IS NOT GUARANTEED. THOSE WISHING TO STAKE MINING CLAIMS SHOULD CONSULT WITH THE MINING RECORDER, MINISTRY OF NORTHERN DEVELOPMENT AND MINES, FOR ADDITIONAL INFORMATION ON THE STATUS OF THE LANDS SHOWN HEREON.



NATIONAL TOPOGRAPHIC SERIES 52 N 8

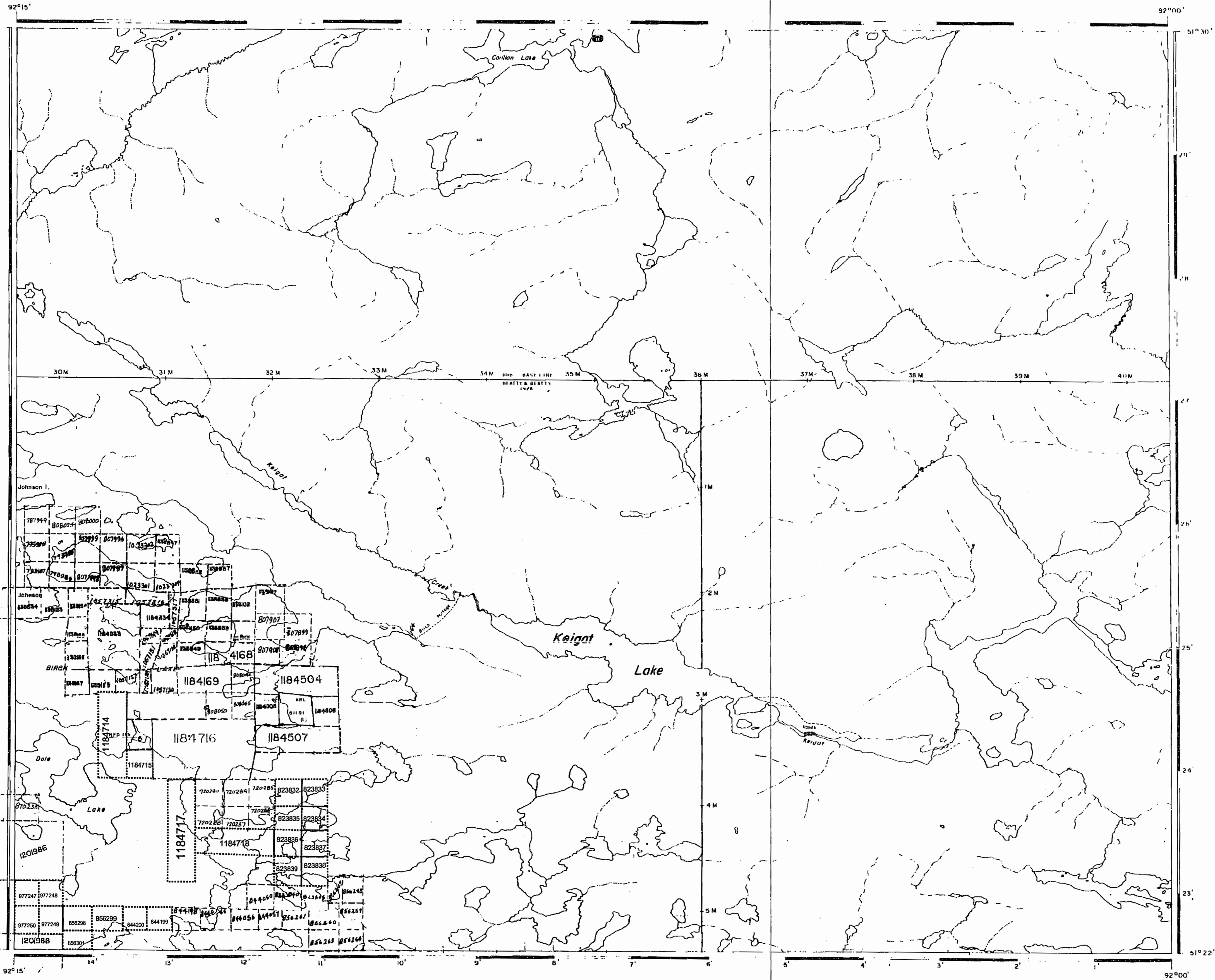
PLAN NO. **G-2086**

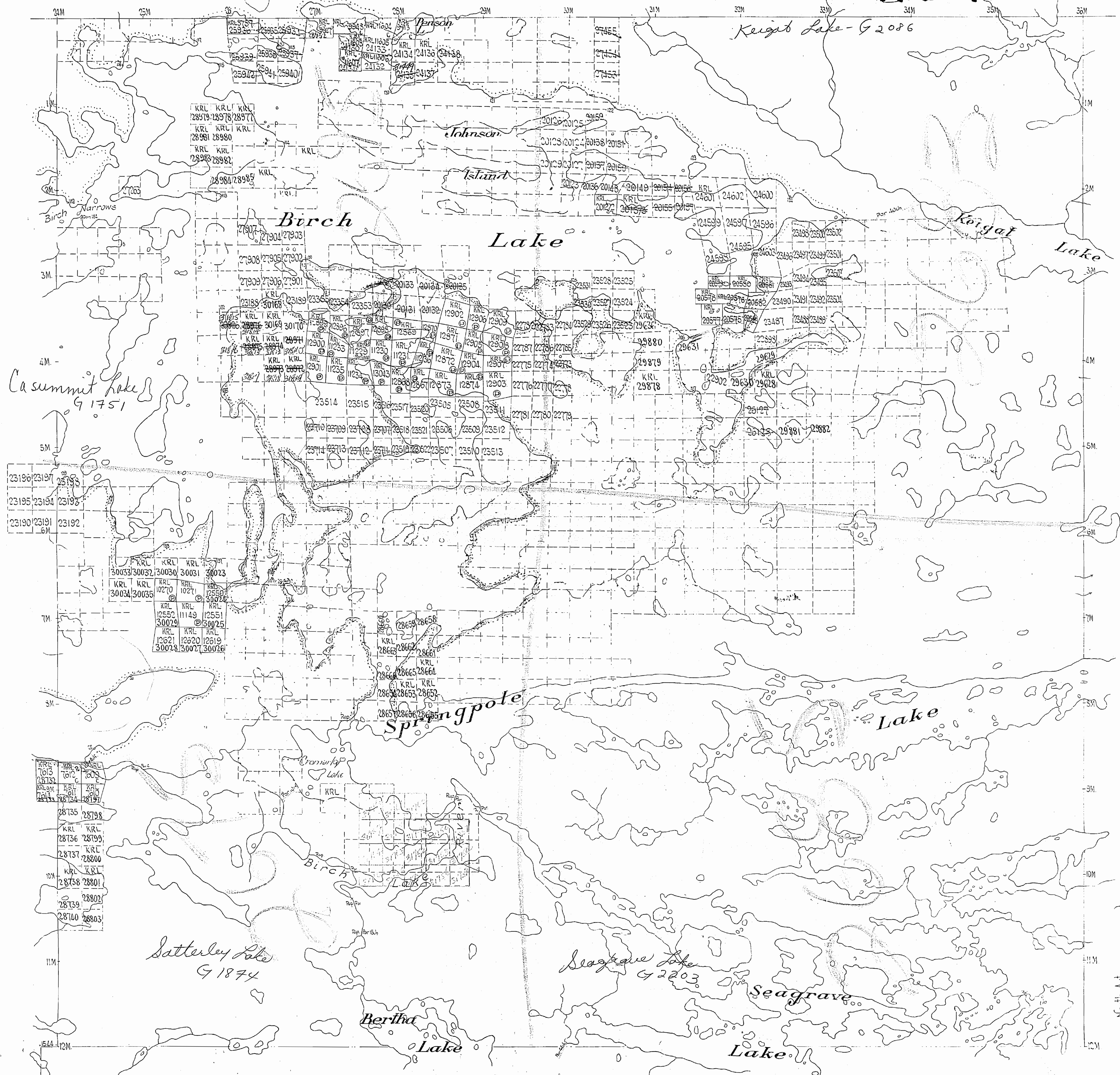
ONTARIO
MINISTRY OF NATURAL RESOURCES
SURVEYS AND MAPPING BRANCH

CASUMMIT LAKE AREA M.2695

ZIONZ LAKE AREA M.2088

SEAGRAVE LAKE AREA M.2685





Surface reservations 200' wide by Dept of L. & K. shown thus
This reservation to apply also along the shorelines of all islands lying within
the area delineated

Scale - 40 Chains = 1 Inch

North Ast.

AREA OF
KEIGAT LAKE

DISTRICT OF
KENORA
(PATRICIA PORTION)

RED LAKE
MINING DIVISION

SCALE: 1-INCH = 40 CHAINS

LEGEND

- PATENTED LAND Ⓟ
- CROWN LAND SALE Ⓢ
- LEASES Ⓞ
- LOCATED LAND Loc.
- LICENSE OF OCCUPATION L.O.
- MINING RIGHTS ONLY M.R.O.
- SURFACE RIGHTS ONLY S.R.O.
- ROADS —
- IMPROVED ROADS —
- KING'S HIGHWAYS —
- RAILWAYS —
- POWER LINES —
- MARSH OR MUSKEG —
- MINES X
- CANCELLED C

NOTES

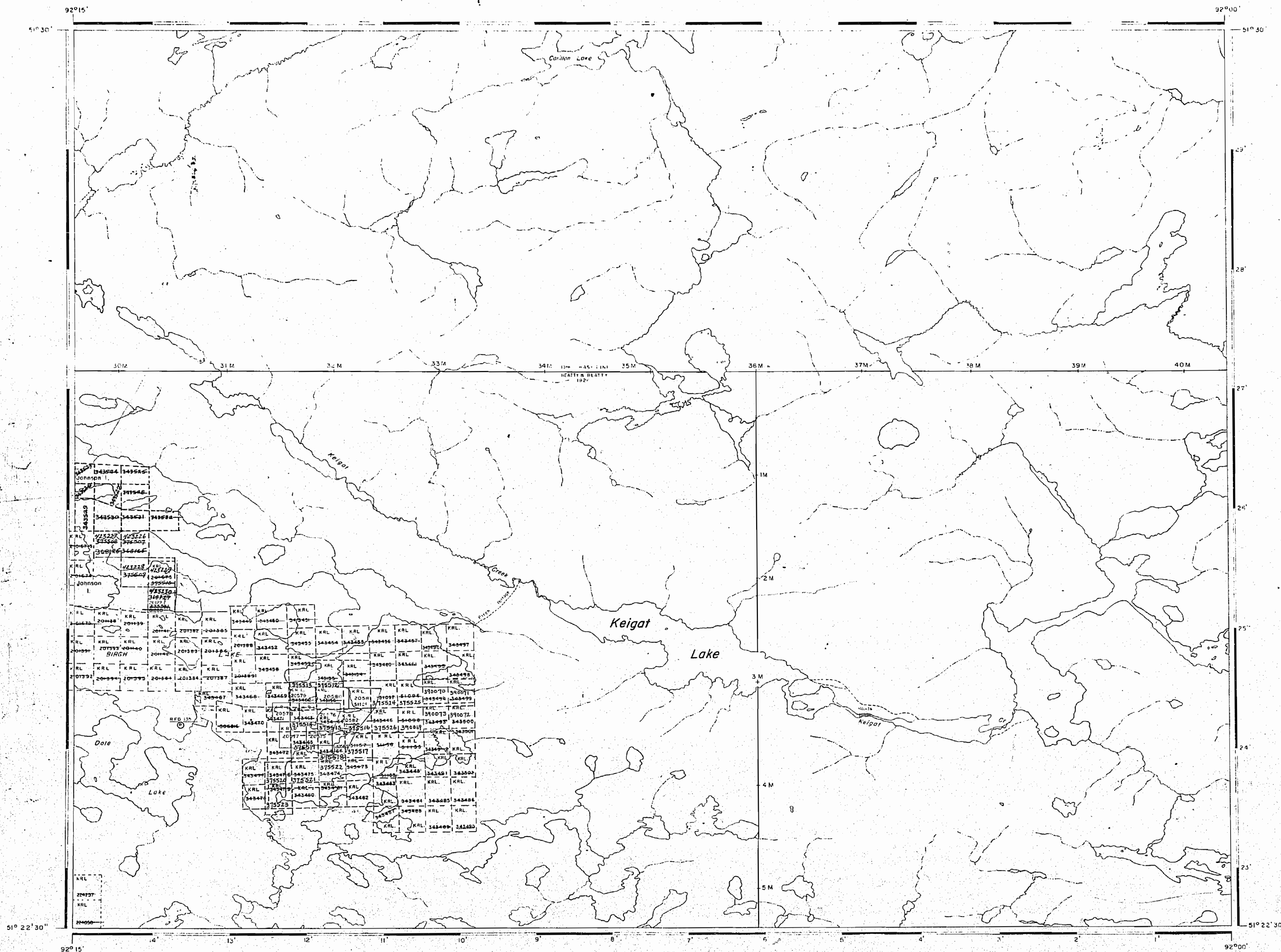
400' Reserve around all Lakes & Rivers
to Dept. of Lands & Forests.

NOV 20 1972
AR 713 (9101102, 11213141516)
FM

NATIONAL TOPOGRAPHIC SERIES 52 N

PLAN NO. M.2683

ONTARIO
DEPARTMENT OF MINES
AND NORTHERN AFFAIRS



AREA OF
KEIGAT LAKE

DISTRICT OF
KENORA
(PATRICIA PORTION)

RED LAKE
MINING DIVISION

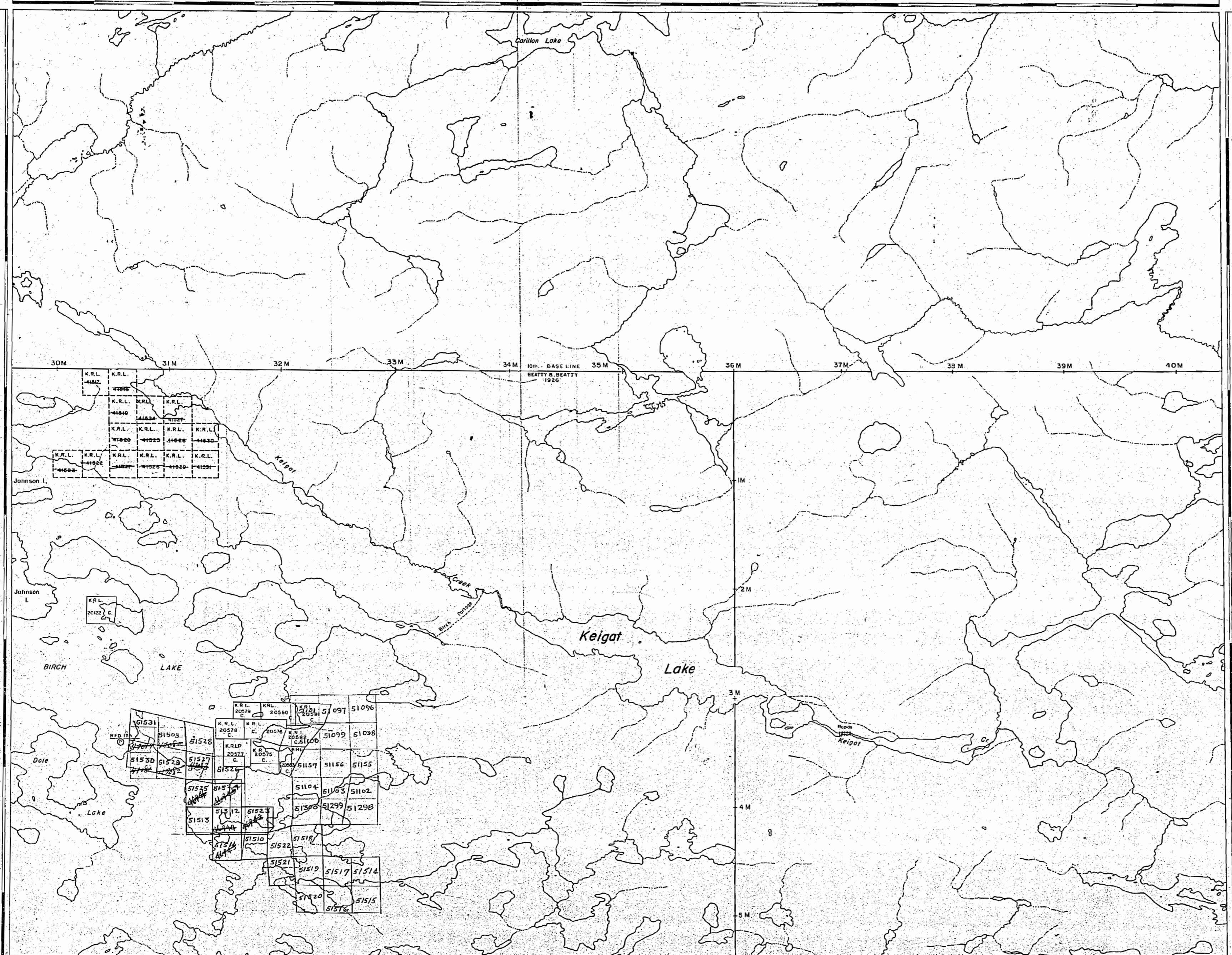
SCALE: 1-INCH = 40 CHAINS

LEGEND

- PATENTED LAND Ⓟ
- CROWN LAND SALE C.S.
- LEASES Ⓞ
- LOCATED LAND Loc.
- LICENSE OF OCCUPATION L.O.
- MINING RIGHTS ONLY M.R.O.
- SURFACE RIGHTS ONLY S.R.O.
- ROADS —
- IMPROVED ROADS —
- KING'S HIGHWAYS —
- RAILWAYS —
- POWER LINES —
- MARSH OR MUSKEG —
- MINES —
- CANCELLED C.

NOTES

400' Reserve around all Lakes & Rivers
to Dept. of Lands & Forests.



PLAN NO. **M. 2683**

DEPARTMENT OF MINES
— ONTARIO —

AREA OF

KEIGAT LAKE

DISTRICT OF
KENORA
(PATRICIA PORTION)

RED LAKE
MINING DIVISION

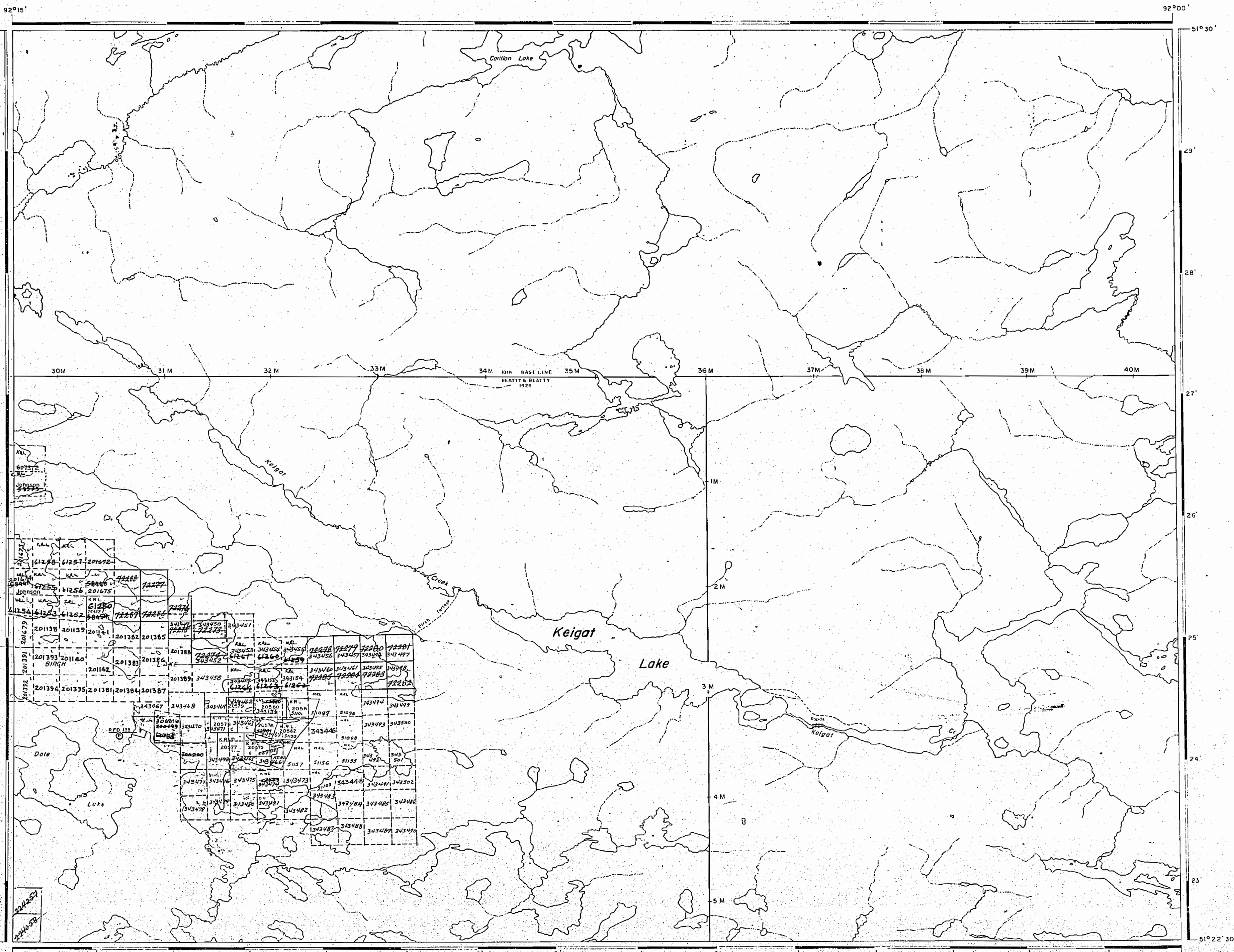
SCALE: 1-INCH = 40 CHAINS

LEGEND

- PATENTED LAND ⊙ C.S.
- CROWN LAND SALE ⊙ C.S.
- LEASES ⊙ Loc.
- LOCATED LAND ⋯ L.O.
- LICENSE OF OCCUPATION ⋯ M.R.O.
- MINING RIGHTS ONLY ⋯ S.R.O.
- SURFACE RIGHTS ONLY ⋯ S.R.O.
- ROADS —
- IMPROVED ROADS —
- KING'S HIGHWAYS —
- RAILWAYS —
- POWER LINES —
- MARSH OR MUSKEG —
- MINES ⋈
- CANCELLED C.

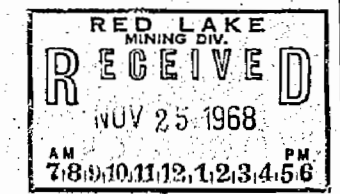
NOTES

400' Reserve around all Lakes & Rivers
to Dept. of Lands & Forests.



M. 2685

M. 2685



PLAN NO. M. 2683

DEPARTMENT OF MINES
— ONTARIO —

CARILLON LAKE AREA M.1973

AREA OF

KEIGAT LAKE

DISTRICT OF
KENORA
(PATRICIA PORTION)

RED LAKE
MINING DIVISION

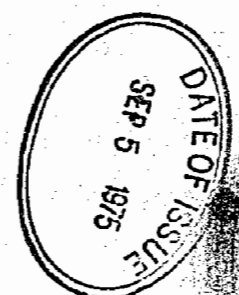
SCALE: 1-INCH = 40 CHAINS

LEGEND

- PATENTED LAND ⊙
- CROWN LAND SALE ⊙
- LEASES ⊙
- LOCATED LAND Loc.
- LICENSE OF OCCUPATION L.O.
- MINING RIGHTS ONLY M.R.O.
- SURFACE RIGHTS ONLY S.R.O.
- ROADS —
- IMPROVED ROADS —
- KING'S HIGHWAYS —
- RAILWAYS —
- POWER LINES —
- MARSH OR MUSKEG —
- MINES —
- CANCELLED C.
- PATENT SURFACE RIGHTS ONLY ⊙

NOTES

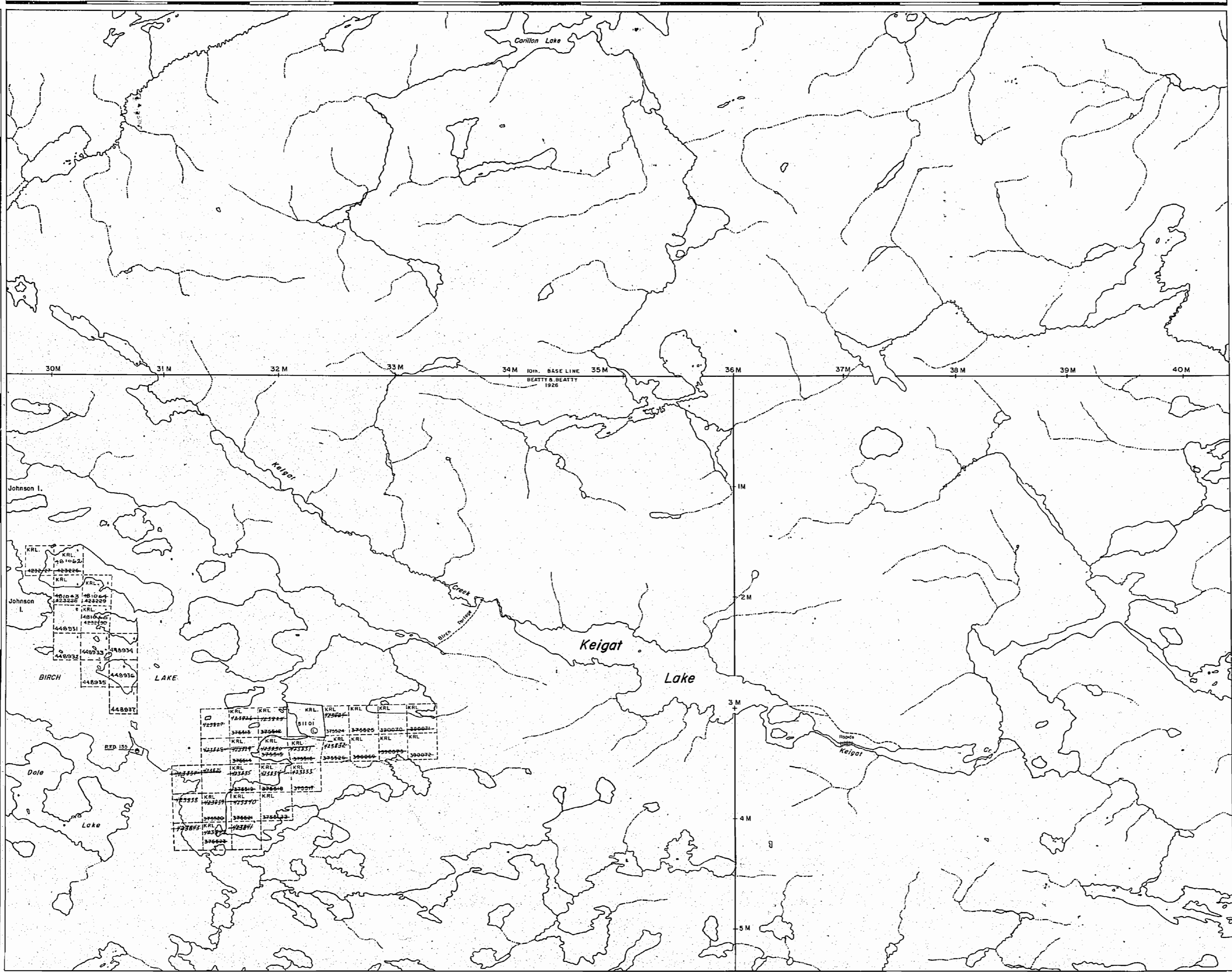
400' surface rights reservation along the shores of all lakes and rivers.



NATIONAL TOPOGRAPHIC SERIES 52 N 8

PLAN NO. M. 2683

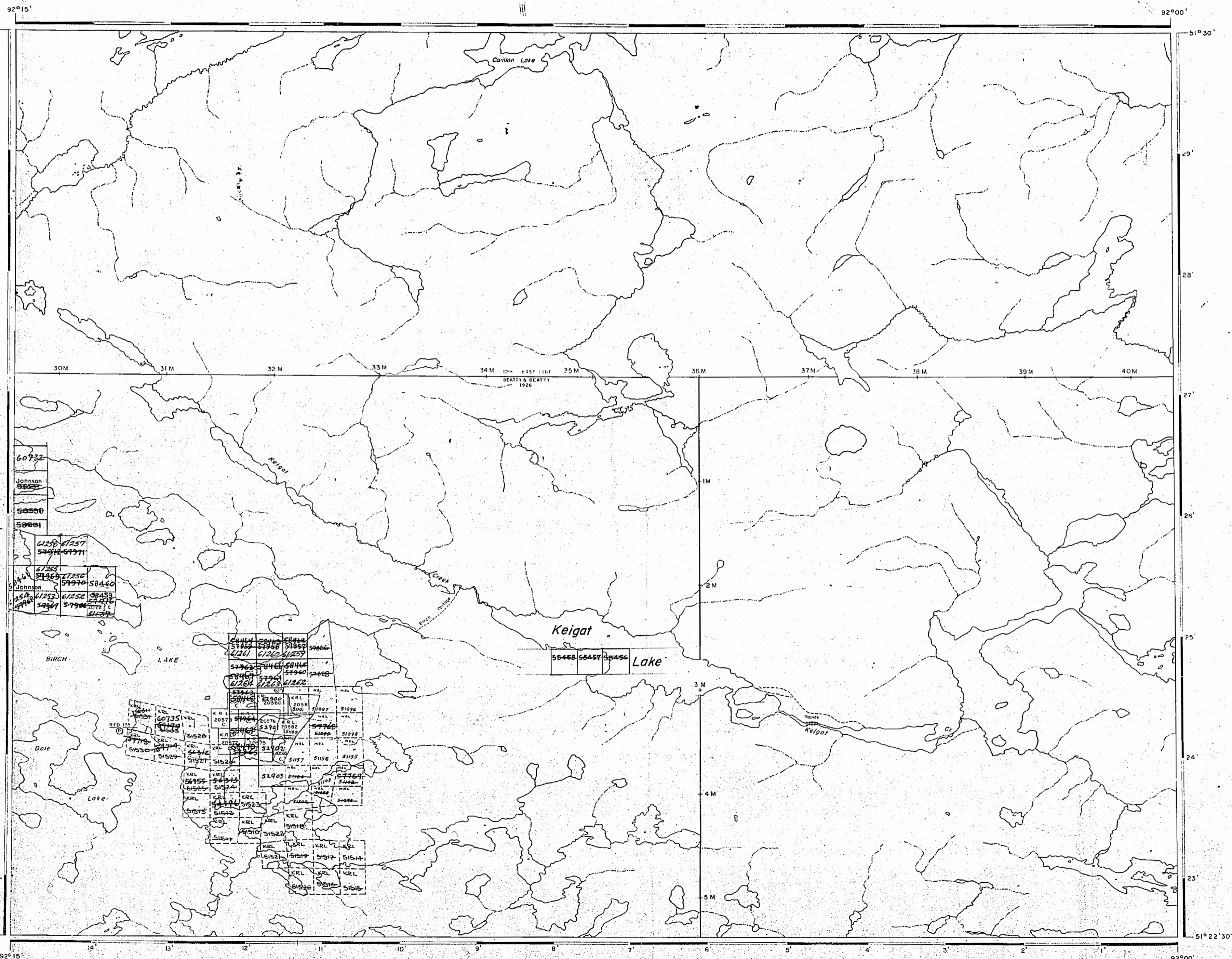
ONTARIO
MINISTRY OF NATURAL RESOURCES
SURVEYS AND MAPPING BRANCH



CASUMMIT LAKE AREA M.2695

ZIONZ LAKE AREA M.2088

SEAGRAVE LAKE AREA M.2685



AREA OF

KEIGAT LAKE

DISTRICT OF
KENORA
(PATRICIA PORTION)

RED LAKE
MINING DIVISION

SCALE: 1-INCH = 40 CHAINS

LEGEND

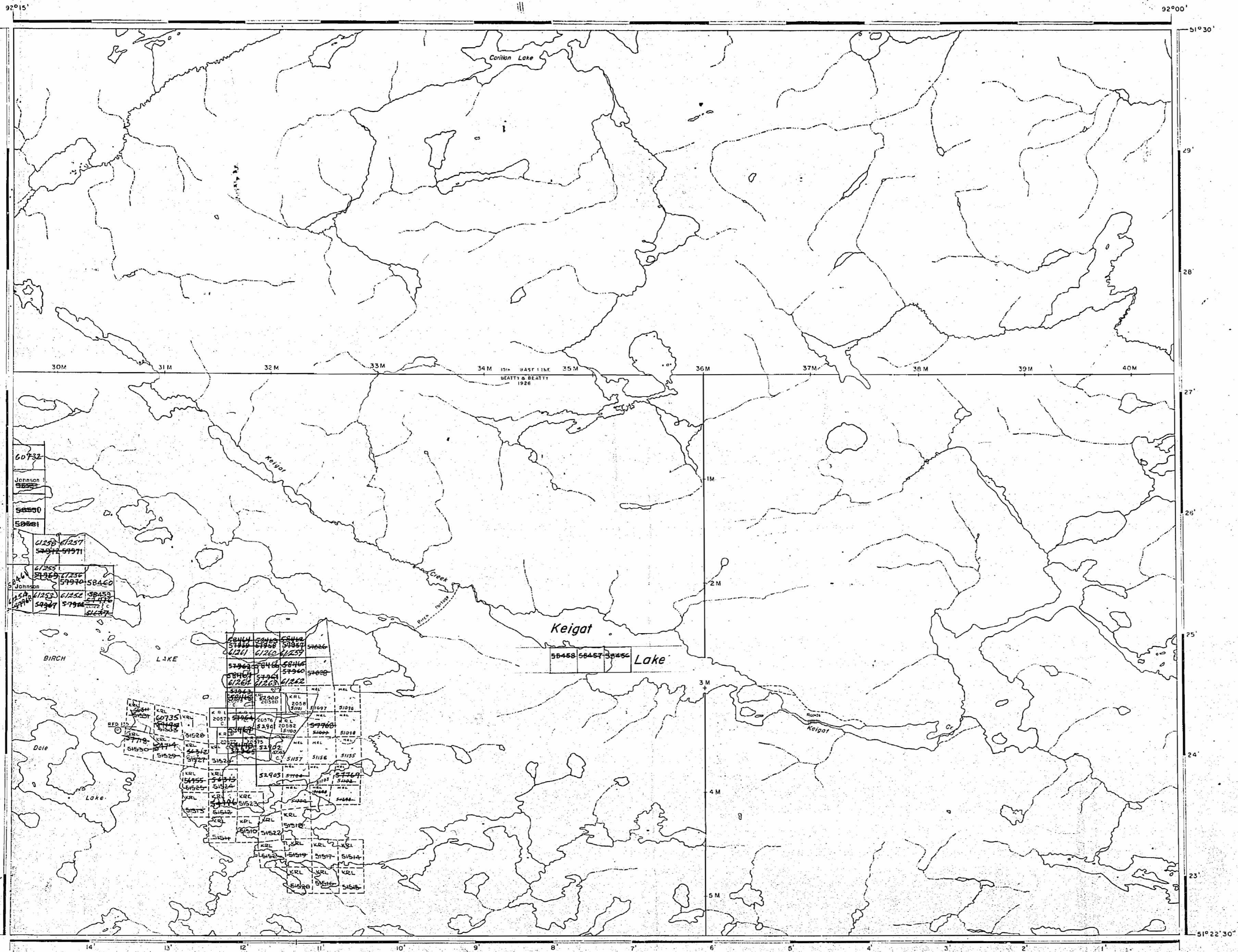
PATENTED LAND	Ⓟ
CROWN LAND SALE	C.S.
LEASES	Ⓛ
LOCATED LAND	Loc
LICENSE OF OCCUPATION	L.O.
MINING RIGHTS ONLY	M.R.O.
SURFACE RIGHTS ONLY	S.R.O.
ROADS	—
IMPROVED ROADS	—
KING'S HIGHWAYS	—
RAILWAYS	—
POWER LINES	—
MARSH OR MUSKEG	—
MINES	Ⓧ
CANCELLED	C.

NOTES

400' Reserve around all Lakes & Rivers
to Dept. of Lands & Forests.

PLAN NO. M. 2683

DEPARTMENT OF MINES
— ONTARIO —





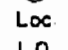
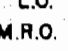
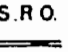

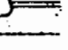
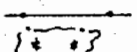
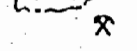



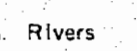
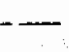

AREA OF
KEIGAT LAKE

DISTRICT OF
KENORA
(PATRICIA PORTION)

RED LAKE
MINING DIVISION

SCALE: 1-INCH = 40 CHAINS

LEGEND

- PATENTED LAND  P
- CROWN LAND SALE  C.S.
- LEASES  L.
- LOCATED LAND  Loc.
- LICENSE OF OCCUPATION  L.O.
- MINING RIGHTS ONLY  M.R.O.
- SURFACE RIGHTS ONLY  S.R.O.
- ROADS 
- IMPROVED ROADS 
- KING'S HIGHWAYS 
- RAILWAYS 
- POWER LINES 
- MARSH OR MUSKEG 
- MINES  X
- CANCELLED  C.

NOTES

400' Reserve around all Lakes & Rivers
to Dept. of Lands & Forests.

PLAN NO. M. 2683

DEPARTMENT OF MINES
— ONTARIO —

KEIGAT LAKE

DISTRICT OF
KENORA
(PATRICIA PORTION)

RED LAKE
MINING DIVISION

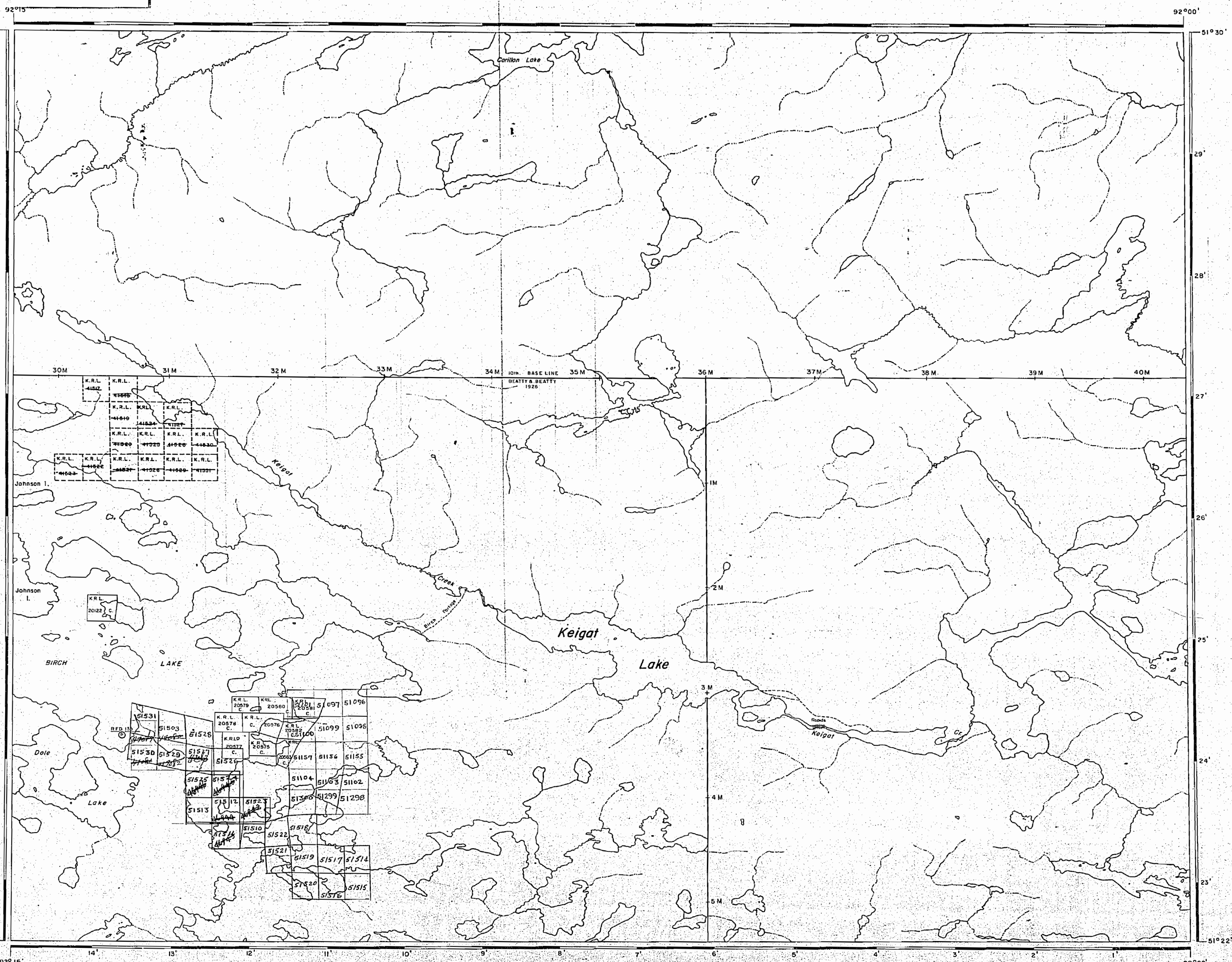
SCALE: 1-INCH = 40 CHAINS

LEGEND

PATENTED LAND	⊙
CROWN LAND SALE	C.S.
LEASES	⊖
LOCATED LAND	Loc.
LICENSE OF OCCUPATION	L.O.
MINING RIGHTS ONLY	M.R.O.
SURFACE RIGHTS ONLY	S.R.O.
ROADS	—
IMPROVED ROADS	—
KING'S HIGHWAYS	—
RAILWAYS	—
POWER LINES	—
MARSH OR MUSKEG	—
MINES	⌘
CANCELLED	C.

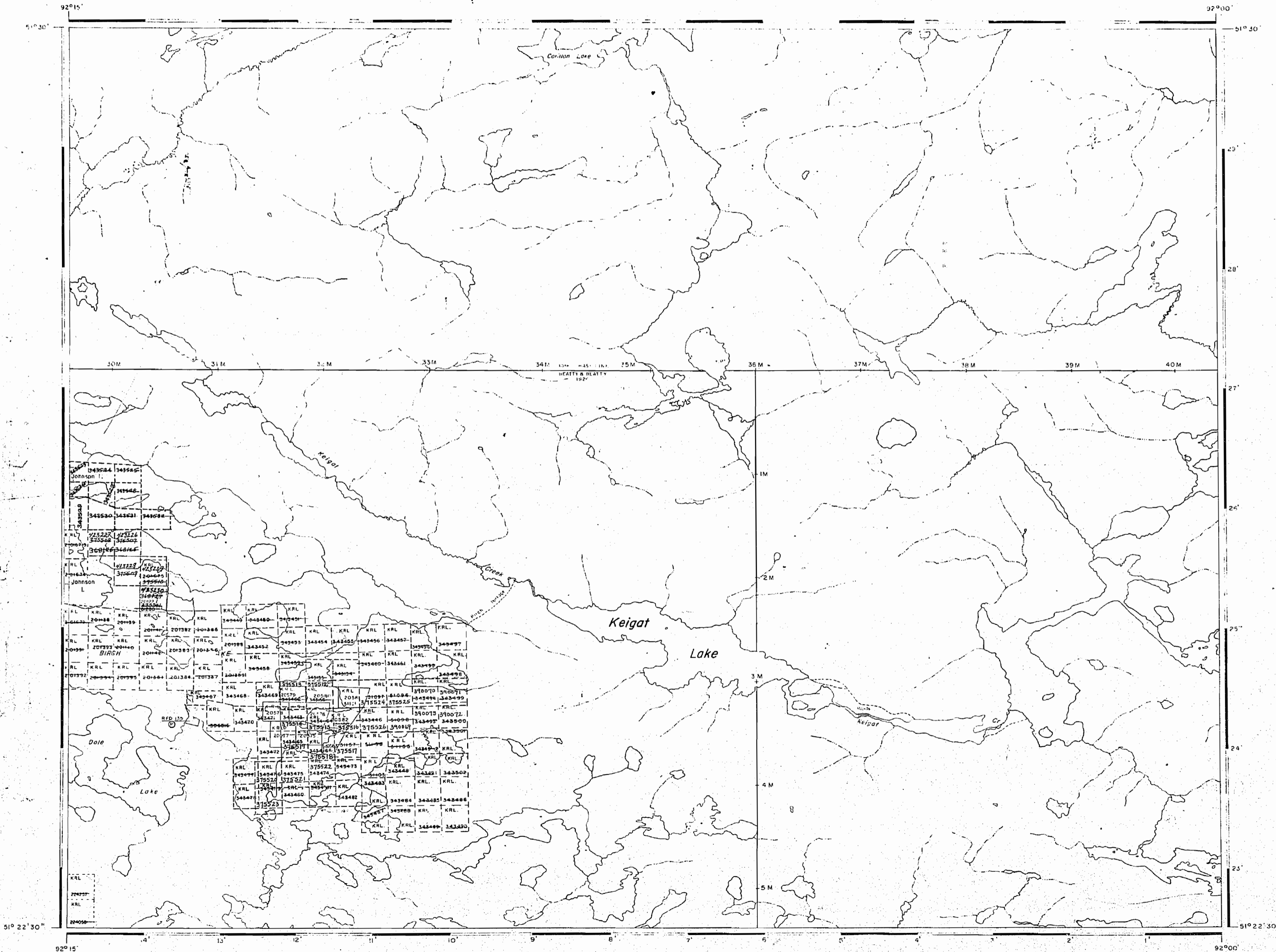
NOTES

400' Reserve around all Lakes & Rivers to Dept. of Lands & Forests.



PLAN NO. M.2683

DEPARTMENT OF MINES
— ONTARIO —



AREA OF
KEIGAT LAKE

DISTRICT OF
KENORA
(PATRICIA PORTION)

RED LAKE
MINING DIVISION

SCALE: 1-INCH = 40 CHAINS

LEGEND

- | | |
|-----------------------|--------|
| PATENTED LAND | ⊙ |
| CROWN LAND SALE | ⊙ |
| LEASES | ⊙ |
| LOCATED LAND | ⊙ |
| LICENSE OF OCCUPATION | ⊙ |
| MINING RIGHTS ONLY | M.R.O. |
| SURFACE RIGHTS ONLY | S.R.O. |
| ROADS | — |
| IMPROVED ROADS | — |
| KING'S HIGHWAYS | — |
| RAILWAYS | — |
| POWER LINES | — |
| MARSH OR MUSKEG | — |
| MINES | ⋈ |
| CANCELLED | C. |

NOTES

400' Reserve around all Lakes & Rivers to Dept. of Lands & Forests.

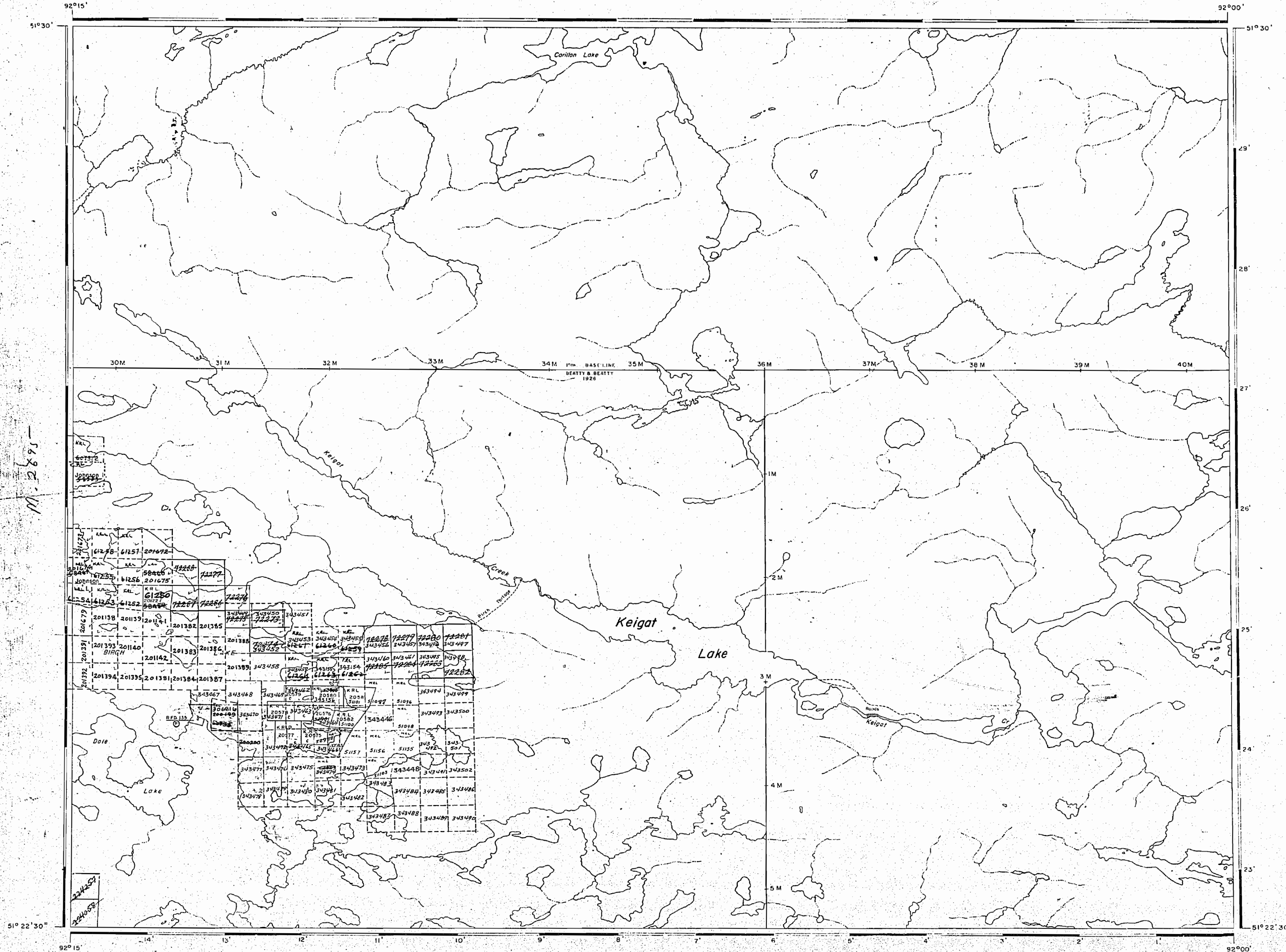
APR 10 1972
7:39:10:12:1:2:3:4:5:6

NATIONAL TOPOGRAPHIC SERIES 52 N

PLAN NO. M.2683

ONTARIO
DEPARTMENT OF MINES
AND NORTHERN AFFAIRS

2683



AREA OF
KEIGAT LAKE

DISTRICT OF
KENORA
(PATRICIA PORTION)

RED LAKE
MINING DIVISION

SCALE: 1-INCH = 40 CHAINS

LEGEND

- PATENTED LAND ⊙
- CROWN LAND SALE C.S.
- LEASES ⊖
- LOCATED LAND Loc.
- LICENSE OF OCCUPATION L.O.
- MINING RIGHTS ONLY M.R.O.
- SURFACE RIGHTS ONLY S.R.O.
- ROADS —
- IMPROVED ROADS —
- KING'S HIGHWAYS —
- RAILWAYS —
- POWER LINES —
- MARSH OR MUSKEG —
- MINES X
- CANCELLED C.

NOTES

400' Reserve around all Lakes & Rivers
to Dept. of Lands & Forests.

RED LAKE
RECEIVED
NOV 25 1968
AM 7:8.9.10.11.12.1.2.3.4.5.6 PM

PLAN NO. M.2683

DEPARTMENT OF MINES
— ONTARIO —

M. 2685

CARILLON LAKE AREA M.1973

AREA OF

KEIGAT LAKE

DISTRICT OF KENORA (PATRICIA PORTION)

RED LAKE MINING DIVISION

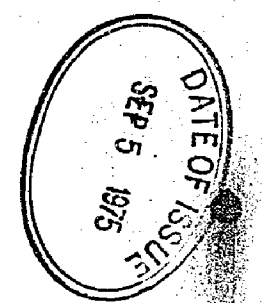
SCALE: 1-INCH = 40 CHAINS

LEGEND

- PATENTED LAND Ⓢ
- CROWN LAND SALE C.S.
- LEASES Ⓛ
- LOCATED LAND L.C.
- LICENSE OF OCCUPATION L.O.
- MINING RIGHTS ONLY M.R.O.
- SURFACE RIGHTS ONLY S.R.O.
- ROADS —
- IMPROVED ROADS —
- KING'S HIGHWAYS —
- RAILWAYS —
- POWER LINES —
- MARSH OR MUSKEG —
- MINES *
- CANCELLED c.
- PATENT SURFACE RIGHTS ONLY Ⓢ

NOTES

400' surface rights reservation along the shores of all lakes and rivers.



CASUMMIT LAKE AREA M.2695

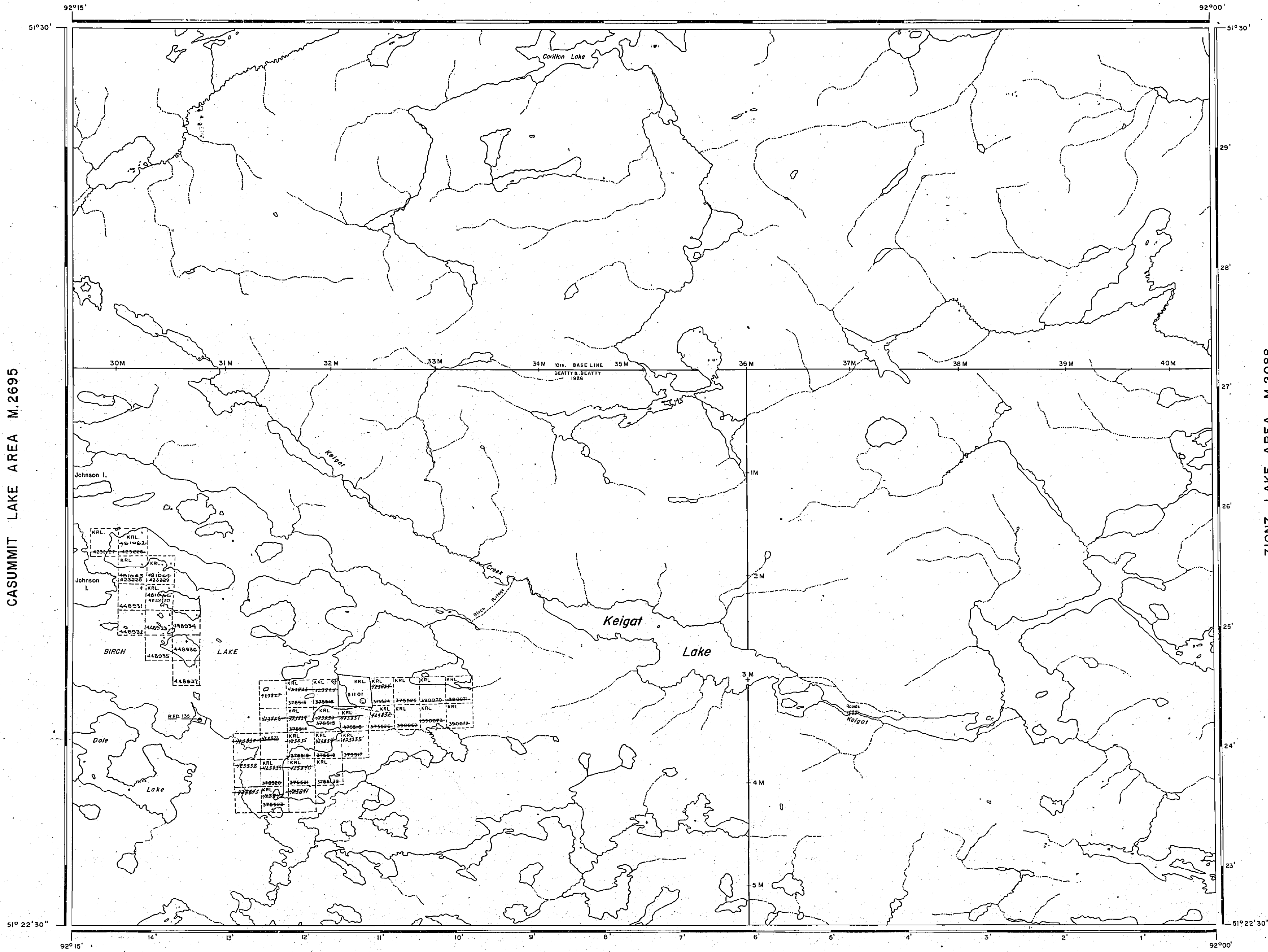
ZIONZ LAKE AREA M.2088

SEAGRAVE LAKE AREA M.2685

NATIONAL TOPOGRAPHIC SERIES 52 N 8

PLAN NO. M.2683

ONTARIO MINISTRY OF NATURAL RESOURCES SURVEY AND MAPPING BRANCH



CARILLON LAKE AREA M.1973

AREA OF
KEIGAT LAKE

DISTRICT OF
KENORA
(PATRICIA PORTION)

RED LAKE
MINING DIVISION

SCALE: 1-INCH = 40 CHAINS

LEGEND

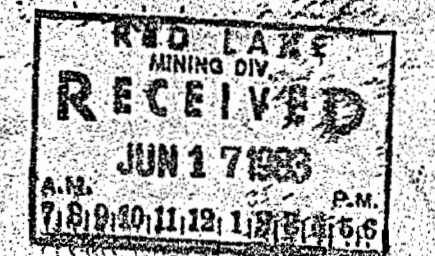
- PATENTED LAND Ⓟ
- CROWN LAND SALE C.S.
- LEASES Ⓞ
- LOCATED LAND Loc.
- LICENSE OF OCCUPATION L.O.
- MINING RIGHTS ONLY M.R.O.
- SURFACE RIGHTS ONLY S.R.O.
- ROADS |||
- IMPROVED ROADS |||
- KING'S HIGHWAYS |||
- RAILWAYS |||
- POWER LINES |||
- MARSH OR MUSKEG |||
- MINES Ⓜ
- CANCELLED Ⓞ
- PATENT SURFACE RIGHTS ONLY Ⓞ

NOTES

400' surface rights reservation along the shores of all lakes and rivers.

REMOTE TOURISM SITE Ⓜ

THE INFORMATION THAT APPEARS ON THIS MAP HAS BEEN COMPILED FROM VARIOUS SOURCES AND ACCURACY IS NOT GUARANTEED. THOSE WISHING TO STAKE MINING CLAIMS SHOULD CONSULT WITH THE MINING RECORDER, MINISTRY OF NORTHERN DEVELOPMENT AND MINES, FOR ADDITIONAL INFORMATION ON THE STATUS OF THE LANDS SHOWN HEREON.



NATIONAL TOPOGRAPHIC SERIES 52 N 8

PLAN NO. **G-2086**

ONTARIO
MINISTRY OF NATURAL RESOURCES
SURVEYS AND MAPPING BRANCH

