

AREA OF

KILBURN LAKE

DISTRICT OF
KENORA
(PATRICIA PORTION)

KENORA
MINING DIVISION

SCALE: 1-INCH = 40 CHAINS

LEGEND

PATENTED LAND	⊙
CROWN LAND SALE	CS
LEASES	⊙
LOCATED LAND	Loc
LICENSE OF OCCUPATION	LO
MINING RIGHTS ONLY	M.R.O.
SURFACE RIGHTS ONLY	S.R.O.
ROADS	—
IMPROVED ROADS	—
KING'S HIGHWAYS	—
RAILWAYS	—
POWER LINES	—
MARSH OR MUSKEG	—
MINES	*

NOTES

400' Reserve around all Lakes & Rivers to
Dept. of Lands & Forests.

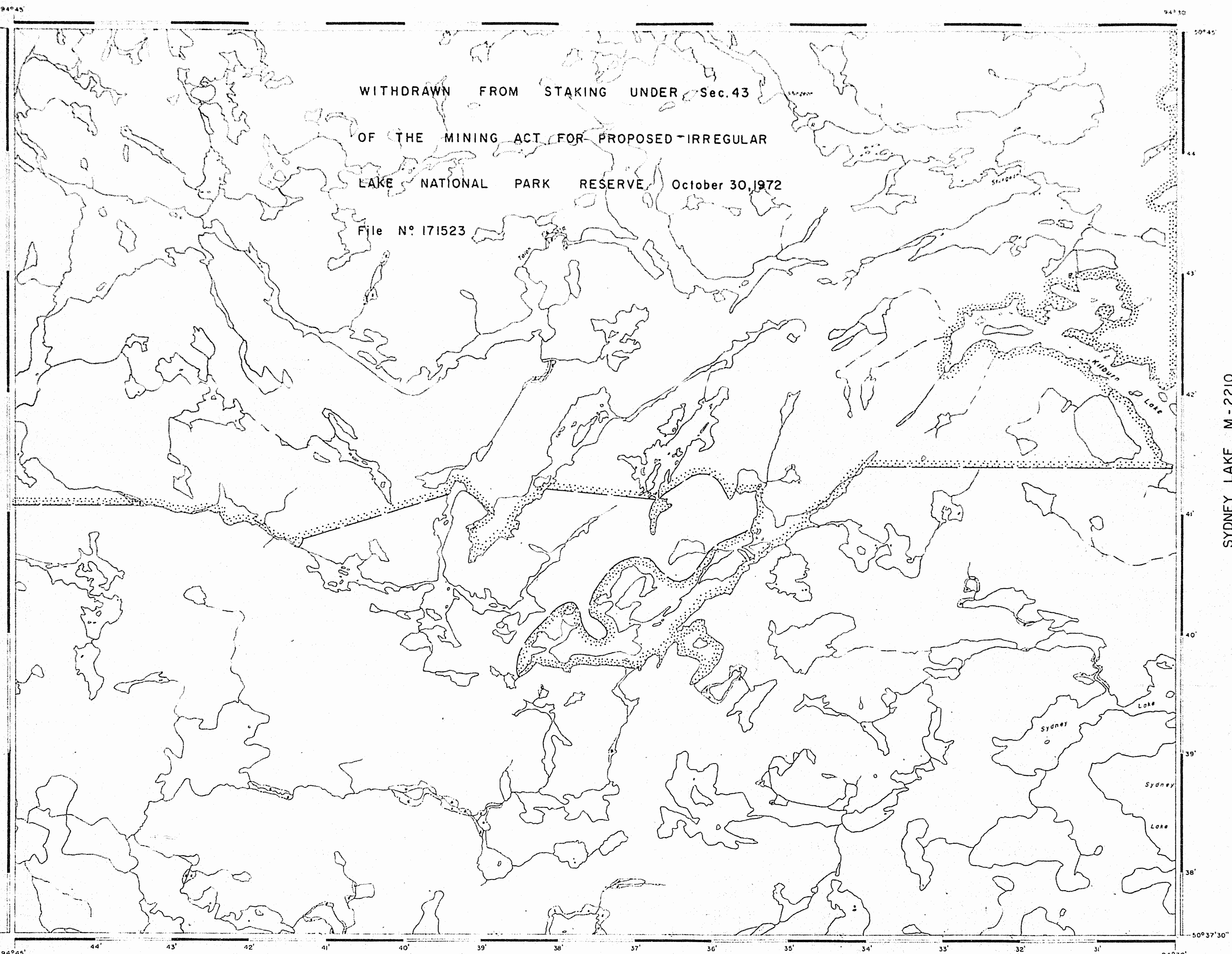
KENORA
FILED
REC'D. NOV 13 1972
RECEIPT No.
MINING DIVISION

2

NATIONAL TOPOGRAPHIC SERIES 52 L

PLAN NO. **M-2175**

**ONTARIO
DEPARTMENT OF MINES
AND NORTHERN AFFAIRS**



AREA OF

KILBURN LAKE

DISTRICT OF
KENORA
(PATRICIA PORTION)

KENORA-RED LAKE
MINING DIVISION

SCALE: 1-INCH = 40 CHAINS

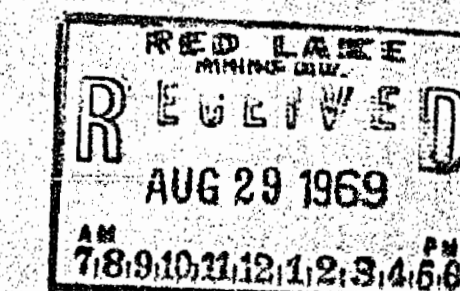
LEGEND

- PATENTED LAND
- CROWN LAND SALE
- LEASES
- LOCATED LAND
- LICENSE OF OCCUPATION
- MINING RIGHTS ONLY
- SURFACE RIGHTS ONLY
- ROADS
- IMPROVED ROADS
- KING'S HIGHWAYS
- RAILWAYS
- POWER LINES
- MARSH OR MUSKEG
- MINES

NOTES

400' Reserve around all Lakes & Rivers
Dept. of Lands & Forests.

The Surface and Mining Rights
withdrawn from Prospecting, Staking,
Out, Sale, or Lease. Order under
Section 43 Chapter 274, R.S.O. 1970
of the Mining Act. Irregular Lake
National Park Reserve. October 30, 1970

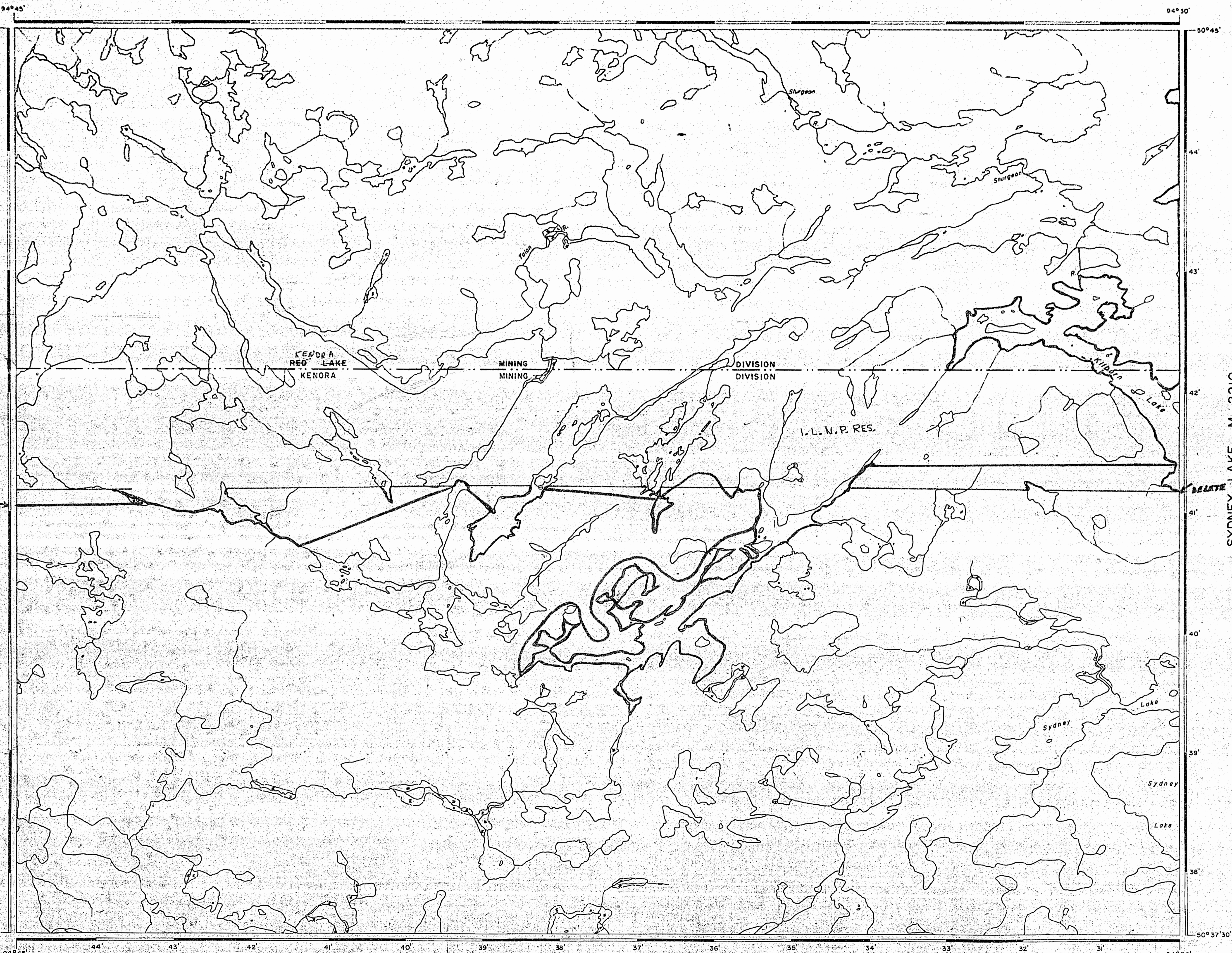


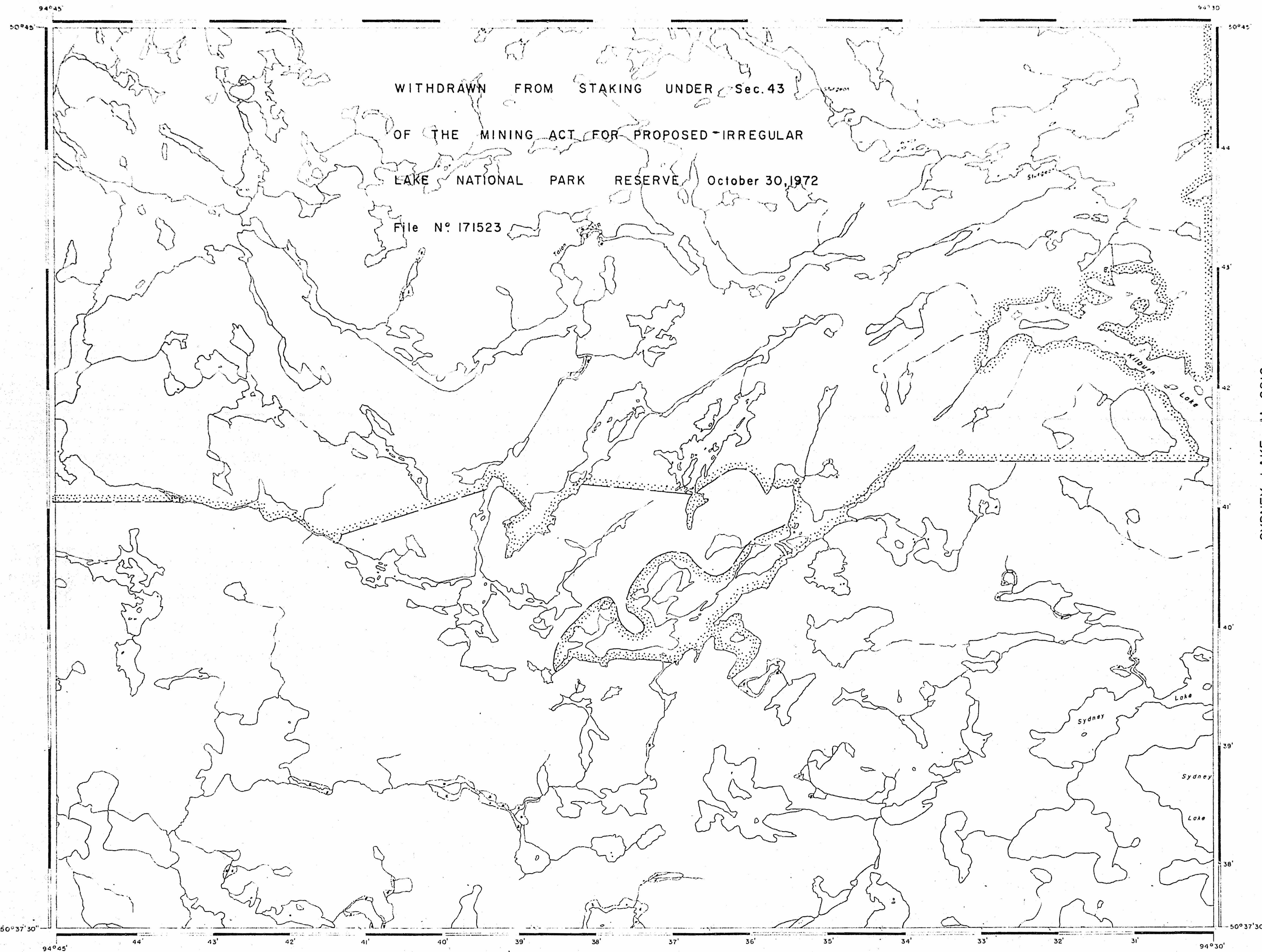
PLAN NO M-2175

DEPARTMENT OF MINES

- ONTARIO -

SYDNEY LAKE M-2210





AREA OF
KILBURN LAKE

DISTRICT OF
KENORA
(PATRICIA PORTION)

KENORA
MINING DIVISION

SCALE: 1-INCH = 40 CHAINS

LEGEND

PATENTED LAND	⊙
CROWN LAND SALE	C.S.
LEASES	⊕
LOCATED LAND	Loc.
LICENSE OF OCCUPATION	L.O.
MINING RIGHTS ONLY	M.R.O.
SURFACE RIGHTS ONLY	S.R.O.
ROADS	—
IMPROVED ROADS	—
KING'S HIGHWAYS	—
RAILWAYS	—
POWER LINES	—
MARSH OR MUSKEG	—
MINES	⋈

NOTES

400' Reserve around all Lakes & Rivers to
Dept. of Lands & Forests.

KENORA
FILED:
REC'D. NOV 13 1972
RECEIPT No.
MINING DIVISION

2

NATIONAL TOPOGRAPHIC SERIES 52 L

PLAN NO. **M-2175**

ONTARIO
DEPARTMENT OF MINES
AND NORTHERN AFFAIRS

AREA OF

KILBURN LAKE

DISTRICT OF
KENORA
(PATRICIA PORTION)

KENORA
MINING DIVISION

SCALE: 1-INCH = 40 CHAINS

LEGEND

PATENTED LAND	Ⓟ
CROWN LAND SALE	C.S.
LEASES	Ⓛ
LOCATED LAND	Loc.
LICENSE OF OCCUPATION	L.O.
MINING RIGHTS ONLY	M.R.O.
SURFACE RIGHTS ONLY	S.R.O.
ROADS	—
IMPROVED ROADS	—
KING'S HIGHWAYS	—
RAILWAYS	—
POWER LINES	—
MARSH OR MUSKEG	—
MINES	⌘

NOTES

400' Surface Rights Reservation along the shores of all lakes and rivers.

AREAS WITHDRAWN FROM DISPOSITION

S.R. — SURFACE RIGHTS M.R. — MINING RIGHTS

Description	Order No.	Date	Disposition	File
Ⓟ Proposed Park Reserve		28/10/77	S.R.O.	171523

#3

Obsolete May 30/84

DATE OF ISSUE

SEP 16 1982

Ministry of Natural Resources
TORONTO

NATIONAL TOPOGRAPHIC, SERIES 52L

PLAN NO. **M-2175**

ONTARIO
MINISTRY OF NATURAL RESOURCES
SURVEYS AND MAPPING BRANCH

94°45'

94°30'

50°45'

WITHDRAWN FROM STAKING UNDER Sec. 43

OF THE MINING ACT FOR PROPOSED IRREGULAR

LAKE NATIONAL PARK RESERVE October 30, 1972

File No. 171523

WOBOLAND CARIBOU

PROVINCIAL PARK

(R1)

SYDNEY LAKE M - 2210

94°45'

44'

43'

42'

41'

40'

39'

38'

37'

36'

35'

34'

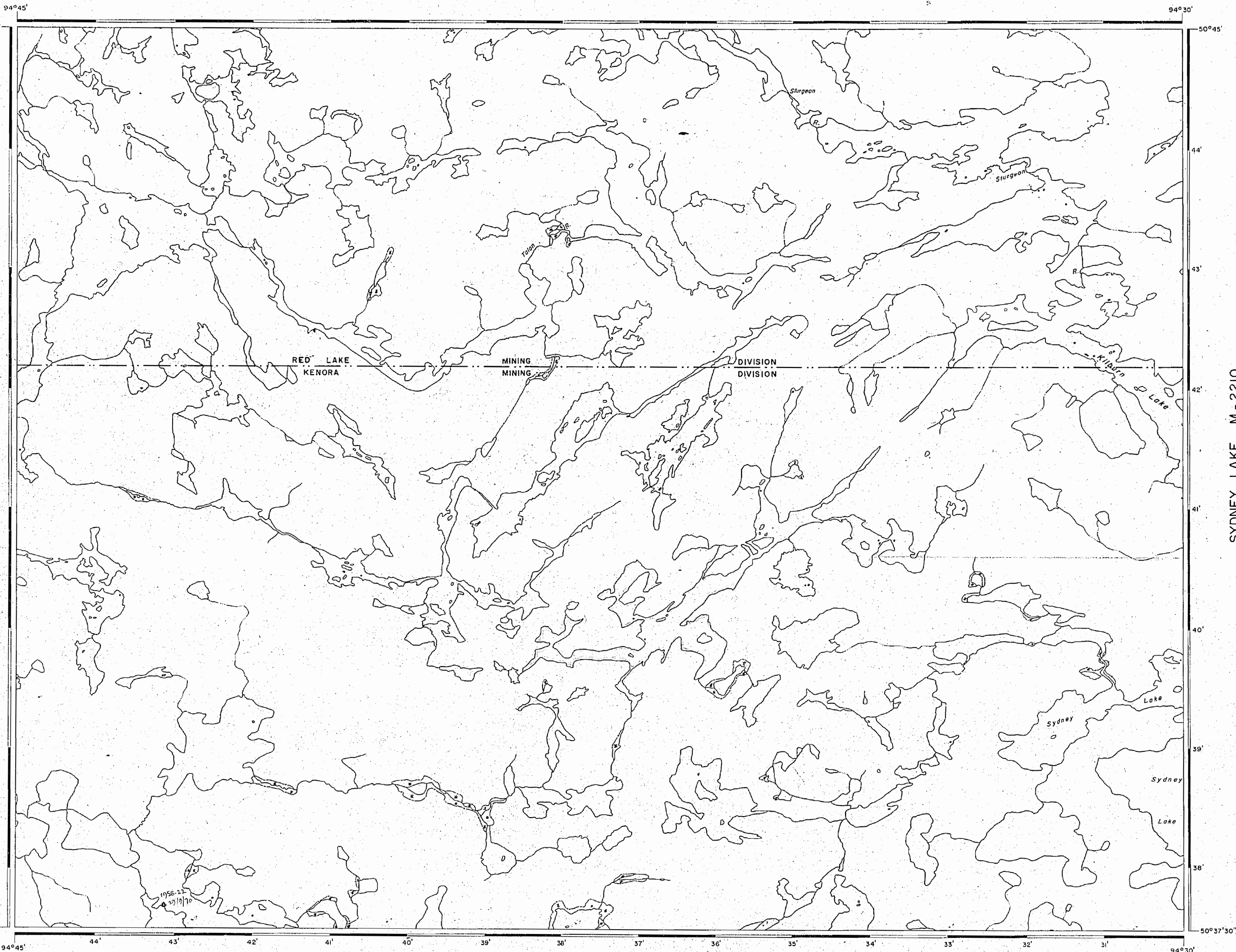
33'

32'

31'

94°30'

50°37'30"



AREA OF
KILBURN LAKE

DISTRICT OF
KENORA
(PATRICIA PORTION)

KENORA-RED LAKE
MINING DIVISION

SCALE: 1-INCH = 40 CHAINS

LEGEND

PATENTED LAND	⊙
CROWN LAND SALE	C.S.
LEASES	⊙
LOCATED LAND	Loc.
LICENSE OF OCCUPATION	L.O.
MINING RIGHTS ONLY	M.R.O.
SURFACE RIGHTS ONLY	S.R.O.
ROADS	—
IMPROVED ROADS	—
KING'S HIGHWAYS	—
RAILWAYS	—
POWER LINES	—
MARSH OR MUSKEG	—
MINES	✱

NOTES

400' Reserve around all Lakes & Rivers to
Dept. of Lands & Forests.



PLAN NO. **M-2175**

DEPARTMENT OF MINES
— ONTARIO —

AREA OF

KILBURN LAKE

DISTRICT OF
KENORA
(PATRICIA PORTION)

KENORA-RED LAKE
MINING DIVISION

SCALE: 1-INCH = 40 CHAINS

LEGEND

PATENTED LAND	⊙
CROWN LAND SALE	CS
LEASES	⊙
LOCATED LAND	LOC
LICENSE OF OCCUPATION	LO
MINING RIGHTS ONLY	MRO
SURFACE RIGHTS ONLY	SRO
ROADS	—
IMPROVED ROADS	—
KING'S HIGHWAYS	—
RAILWAYS	—
POWER LINES	—
MARSH OR MUSKEG	—
MINES	*

NOTES

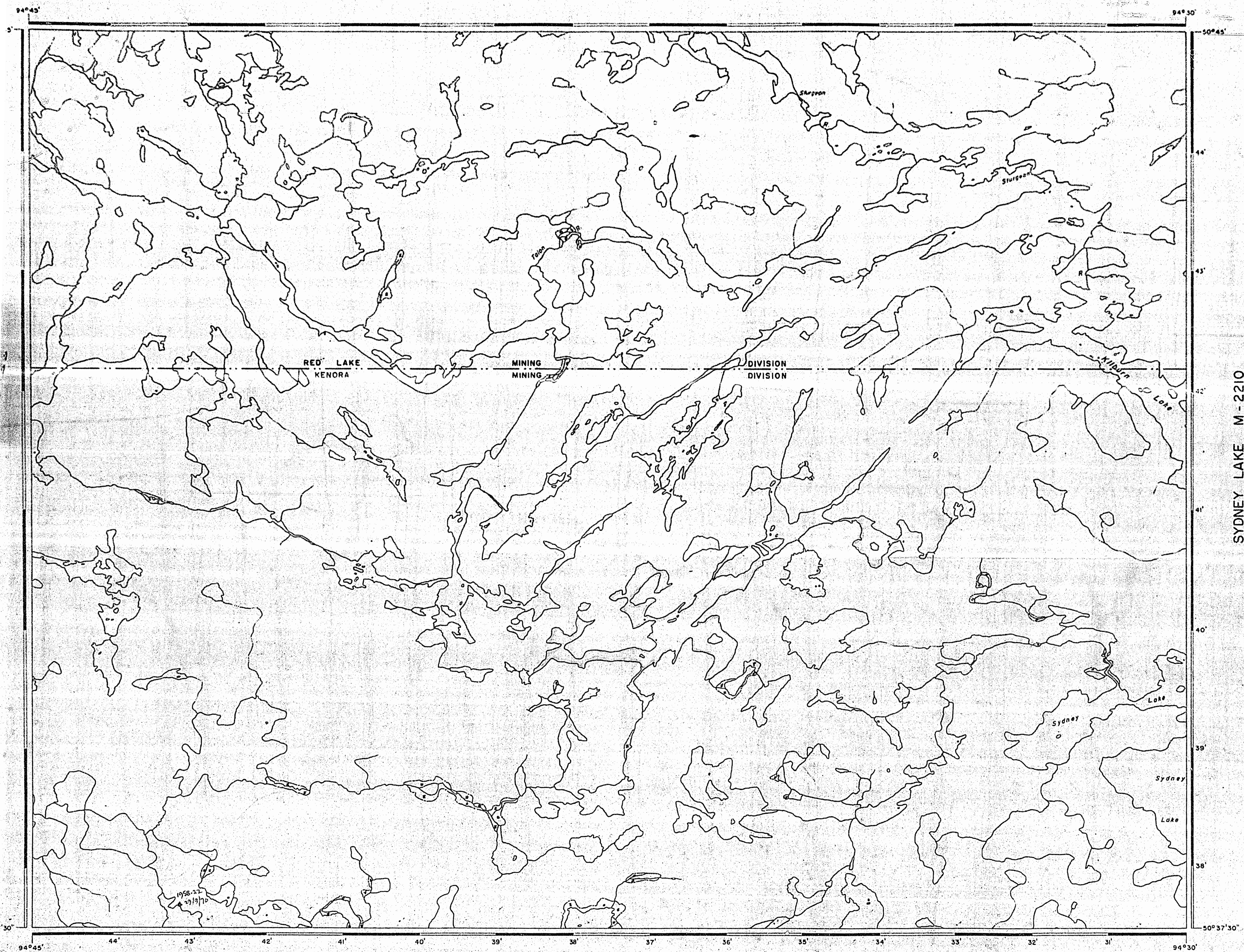
400' Reserve around all Lakes & Rivers
Dept. of Lands & Forests.

RECEIVED
APR 24 1961
KENORA MINING DIV.

#1

PLAN NO. M-2175

DEPARTMENT OF MINES
— ONTARIO —



SYDNEY LAKE M-2210

1958-22
191970

RED LAKE MINING DIVISION
MAR 23 1956
RED LAKE, ONT.

M-2175

Kilburn Lake

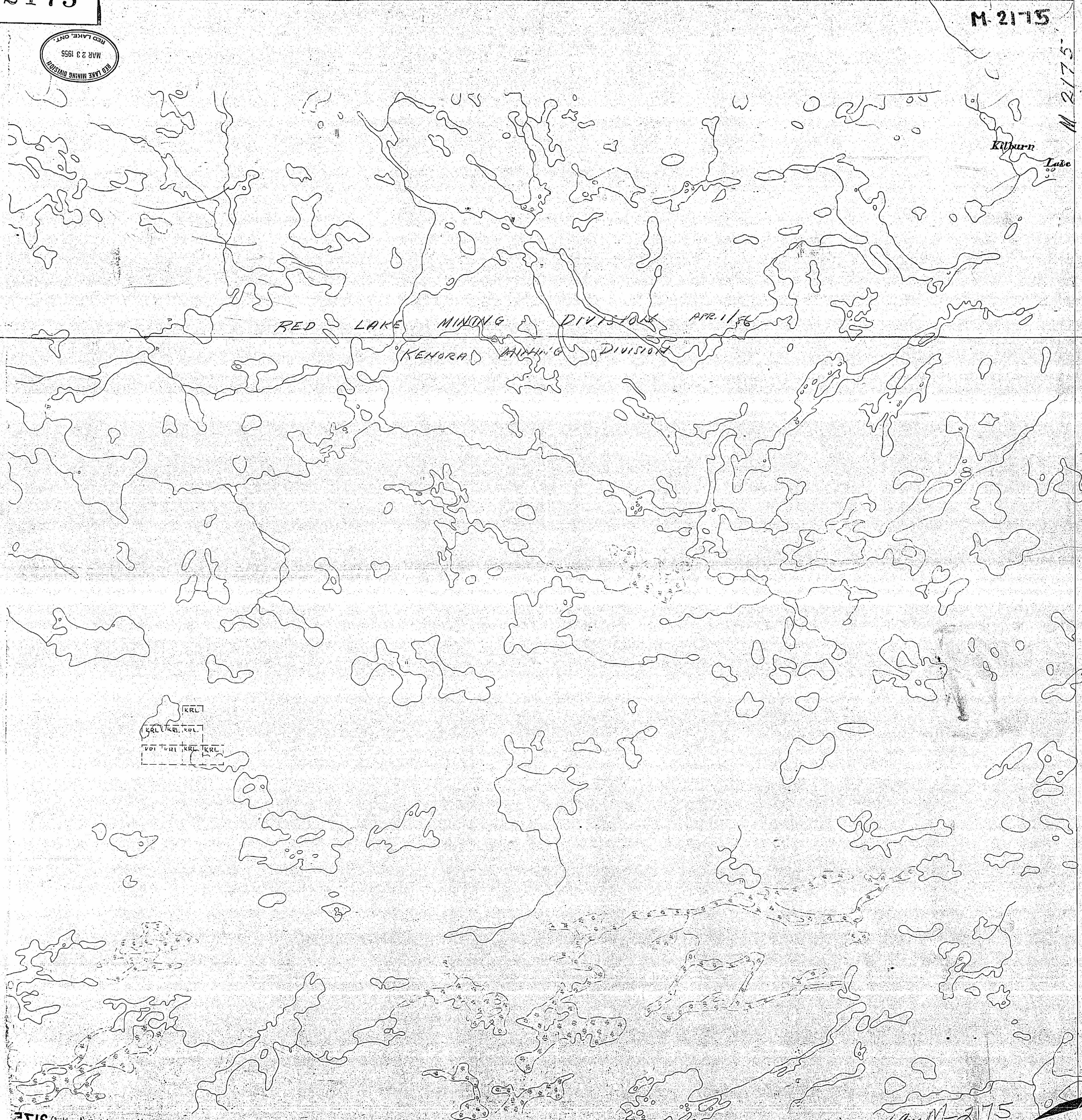
RED LAKE MINING DIVISION APR. 11/56

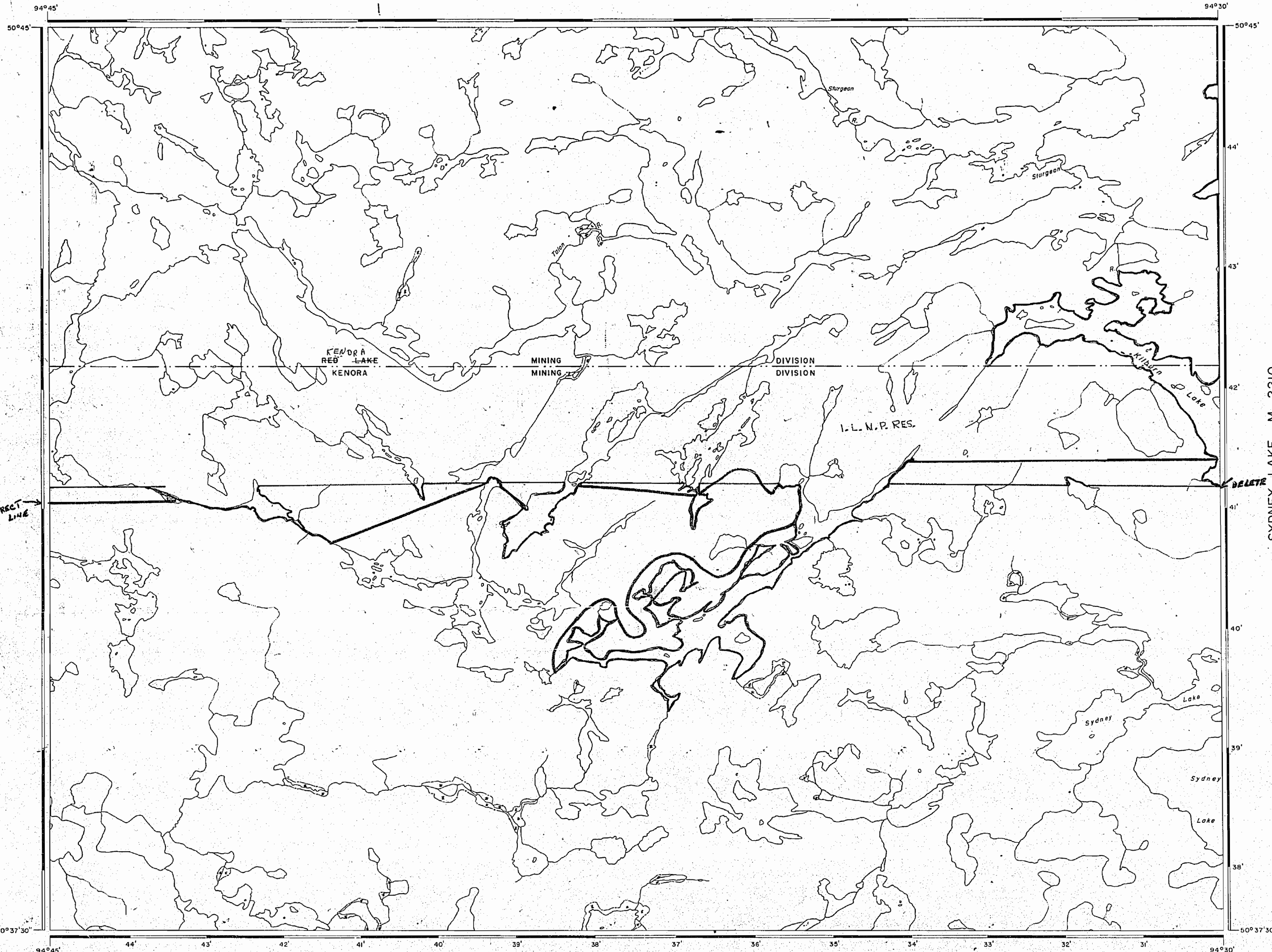
KENORA MINING DIVISION

KRL
KRL/KRL, KRL
KRL KRL KRL KRL

KILBURN LAKE (Area W of) SITE

Kilburn Lake M-2175





AREA OF
KILBURN LAKE

DISTRICT OF
KENORA
(PATRICIA PORTION)

KENORA-RED LAKE
MINING DIVISION

SCALE: 1-INCH = 40 CHAINS

LEGEND

PATENTED LAND	Ⓟ
CROWN LAND SALE	Ⓢ
LEASES	Ⓛ
LOCATED LAND	Ⓛ
LICENSE OF OCCUPATION	L.O.
MINING RIGHTS ONLY	M.R.O.
SURFACE RIGHTS ONLY	S.R.O.
ROADS	—
IMPROVED ROADS	—
KING'S HIGHWAYS	—
RAILWAYS	—
POWER LINES	—
MARSH OR MUSKEG	—
MINES	Ⓧ

NOTES

400' Reserve around all Lakes & Rivers to Dept. of Lands & Forests.

The Surface and Mining Rights withdrawn from Prospecting, Staking Out, Sale, or Lease. Order under Section 43 Chapter 274, R.S.O. 1970 of the Mining Act. Irregular Lake National Park Reserve. October 30, 1972.

RED LAKE
MINING DIV.
RECEIVED
AUG 29 1969
AM 7:8:9 10:11:12:1:2:3:4:5:6 PM

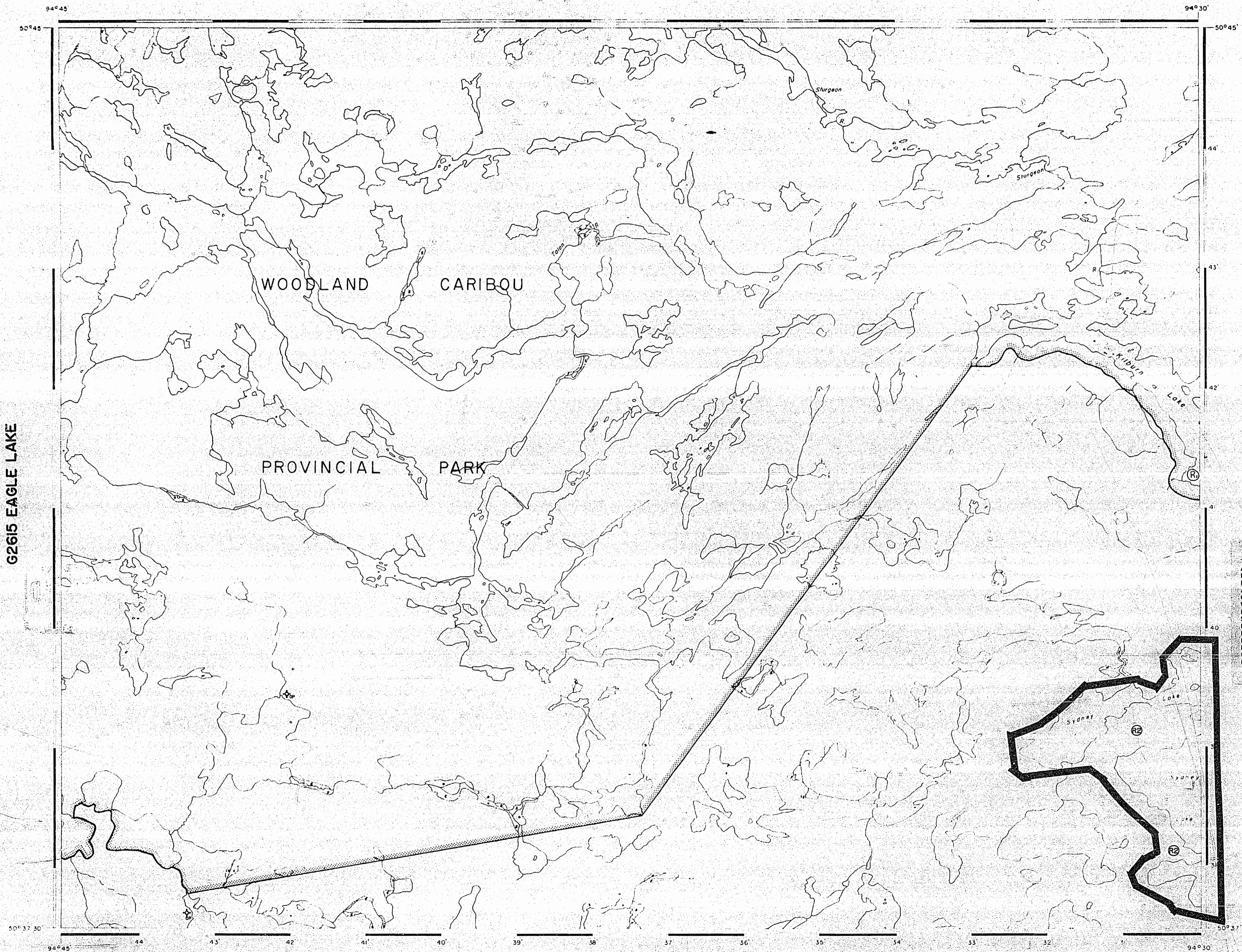
PLAN NO. **M-2175**

DEPARTMENT OF MINES
— ONTARIO —

SYDNEY LAKE M-2210

CORRECT LINE

DELETE



G2615 EAGLE LAKE

G2609 CONNETT LAKE

LEGEND

- HIGHWAY AND ROUTE No.
- OTHER ROADS
- TRAILS
- SURVEYED LINES:
 - TOWNSHIPS, BASE LINES, ETC.
 - LOTS, MINING CLAIMS PARCELS, ETC.
- UNSURVEYED LINES
 - LOT LINES
 - PARCEL BOUNDARY
 - MINING CLAIMS ETC.
- RAILWAY AND RIGHT OF WAY
- UTILITY LINES
- NON PERENNIAL STREAM
- FLOODING OR FLOODING RIGHTS
- SUBDIVISION OR COMPOSITE PLAN
- RESERVATIONS
- ORIGINAL SHORELINE
- MARSH OR MUSKOG
- MINES
- TRAVEL MONUMENT
- TOURIST CAMPS (OP - OUTPOST)

DISPOSITION OF CROWN LANDS

TYPE OF DOCUMENT	SYMBOL
PATENT SURFACE & MINING RIGHTS	
SURFACE RIGHTS ONLY	
MINING RIGHTS ONLY	
LEASE SURFACE & MINING RIGHTS	
SURFACE RIGHTS ONLY	
MINING RIGHTS ONLY	
LICENCE OF OCCUPATION	
ORDER-IN-COUNCIL	
RESERVATION	
CANCELLED	
SAND & GRAVEL	

NOTE: MINING RIGHTS IN PARCELS PATENTED PRIOR TO MAY 6 1913 VESTED IN ORIGINAL PATENTEE BY THE PUBLIC LANDS ACT, R.S.O. 1910, CHAP. 380, SEC. 63, SUBSEC. 1.

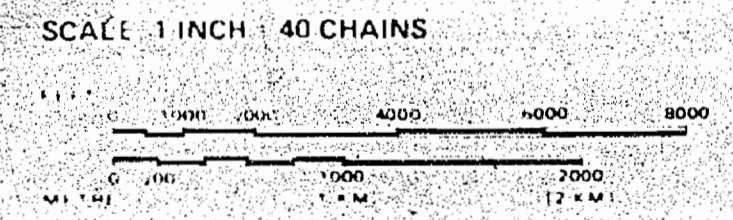
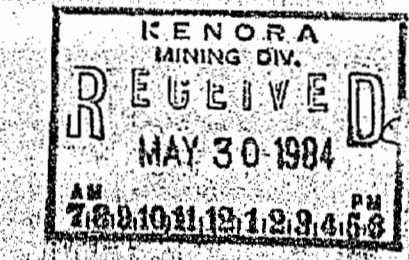
REFERENCES

AREAS WITHDRAWN FROM DISPOSITION

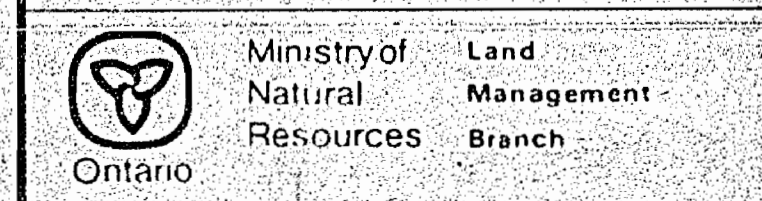
M.R.O.	MINING RIGHTS ONLY			
S.R.O.	SURFACE RIGHTS ONLY			
M+S	MINING AND SURFACE RIGHTS			
Description	Order No.	Date	Disposition	File
SEC35 W-LL-P2370/00		AUG 02/00	M+S	
(200m from waters edge)				

EFFECTIVE DATE

THE INFORMATION THAT APPEARS ON THIS MAP HAS BEEN COMPILED FROM VARIOUS SOURCES AND ACCURACY IS NOT GUARANTEED. THOSE WISHING TO STATE MINING CLAIMS SHOULD CONSULT WITH THE MINING RECORDER, MINISTRY OF NORTHERN DEVELOPMENT AND MINES, FOR ADDITIONAL INFORMATION ON THE STATUS OF THE LANDS SHOWN HEREON.

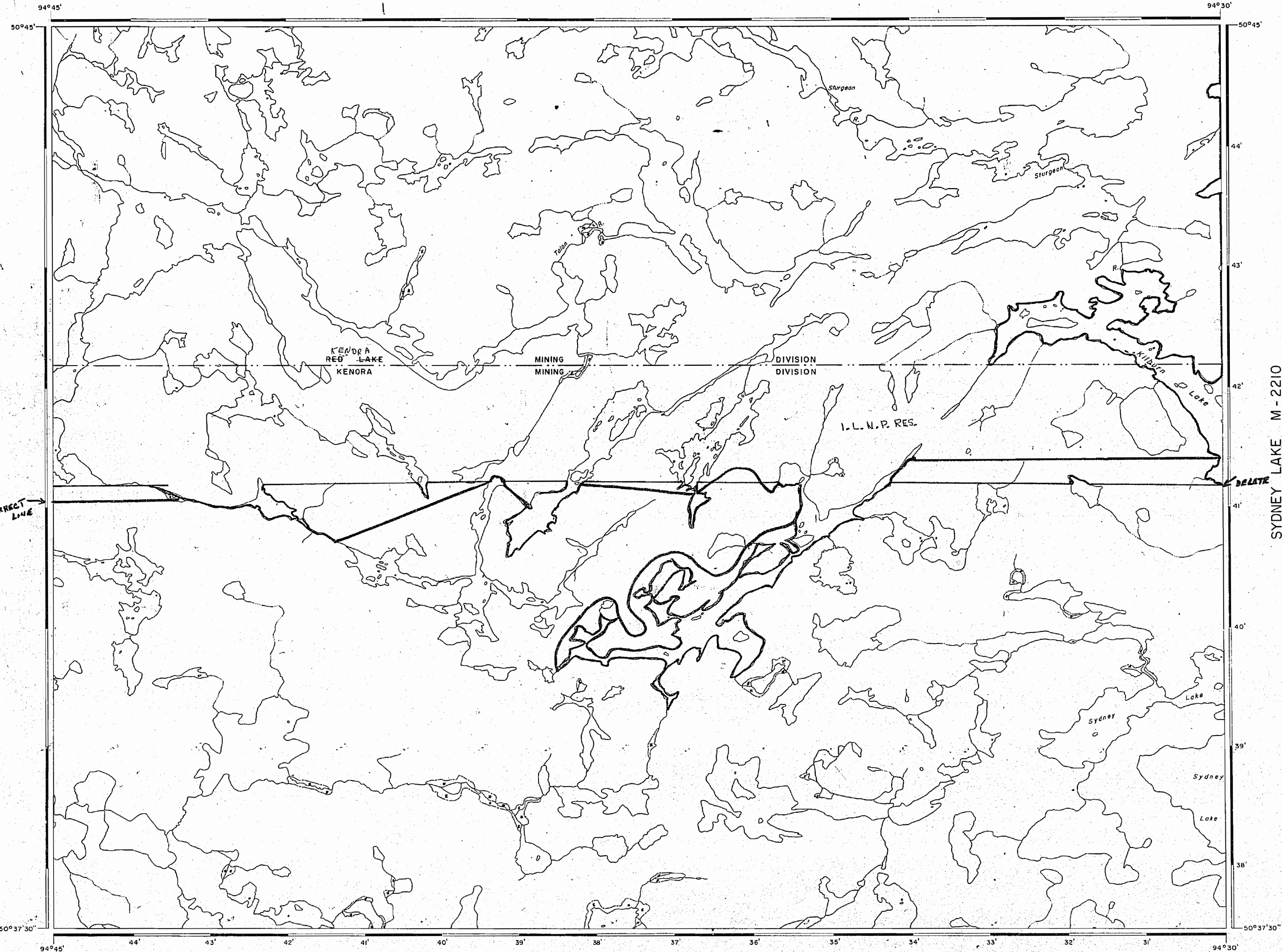


AREA
KILBURN LAKE
 M.N.R. ADMINISTRATIVE DISTRICT
KENORA
 MINING DIVISION
KENORA/RED LAKE
 LAND TITLES / REGISTRY DIVISION
KENORA (PATRICIA PORTION)



Date: MARCH 1984
 Number: M-2175 G-2625

2175



AREA OF
KILBURN LAKE

DISTRICT OF
KENORA
(PATRICIA PORTION)

KENORA-RED LAKE
MINING DIVISION

SCALE: 1-INCH = 40 CHAINS

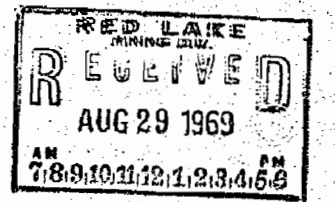
LEGEND

PATENTED LAND	⊙
CROWN LAND SALE	C.S.
LEASES	⊖
LOCATED LAND	Loc.
LICENSE OF OCCUPATION	L.O.
MINING RIGHTS ONLY	M.R.O.
SURFACE RIGHTS ONLY	S.R.O.
ROADS	—
IMPROVED ROADS	—
KING'S HIGHWAYS	—
RAILWAYS	—
POWER LINES	—
MARSH OR MUSKEG	—
MINES	⊗

NOTES

400' Reserve around all Lakes & Rivers to Dept. of Lands & Forests.

The Surface and Mining Rights withdrawn from Prospecting, Staking Out, Sale, or Lease. Order under Section 43 Chapter 274, R.S.O. 1970 of the Mining Act. Irregular Lake National Park Reserve. October 30, 1972.



PLAN NO. **M-2175**

DEPARTMENT OF MINES
- ONTARIO -



RED LAKE MINING DIVISION APR. 11/56

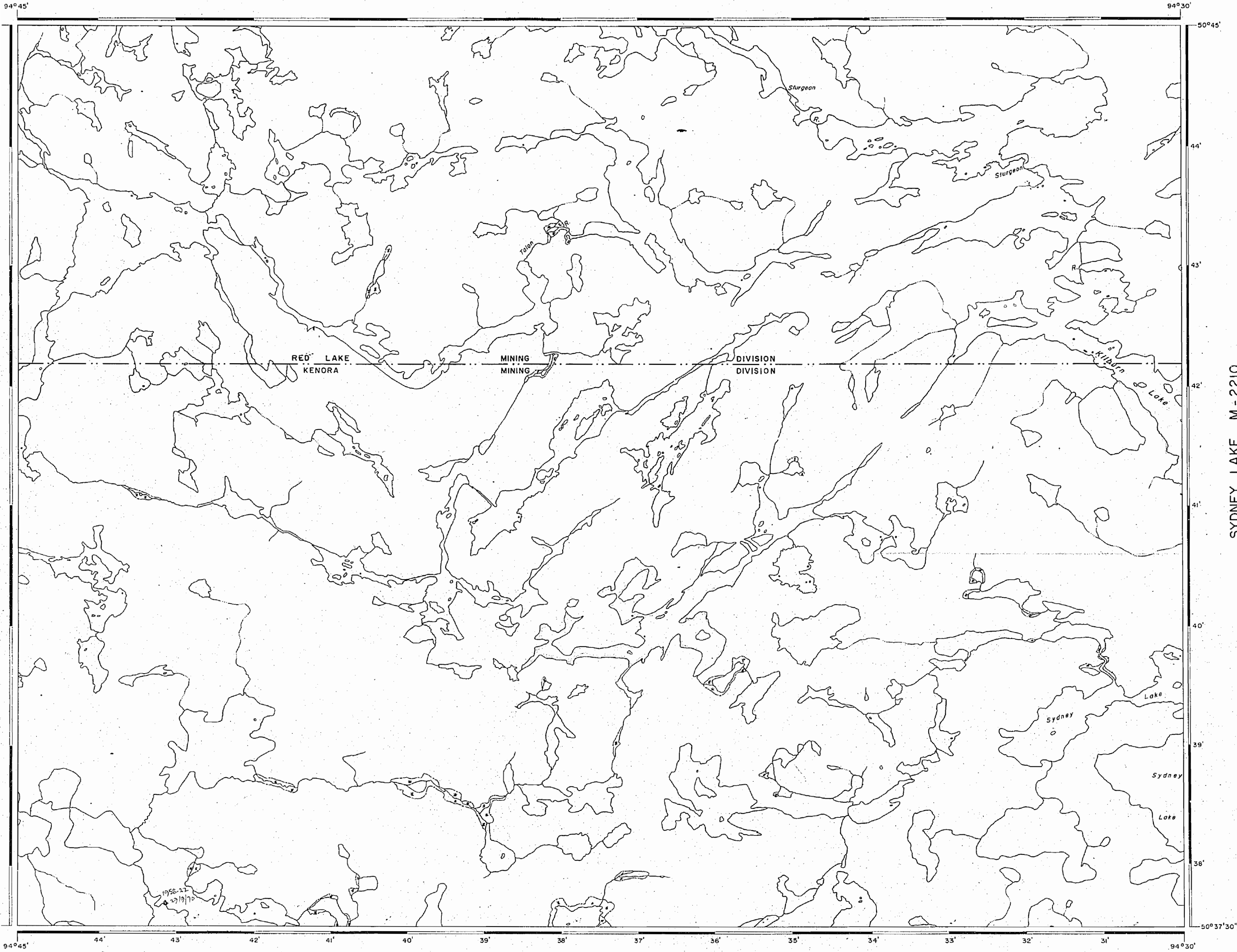
KENORA MINING DIVISION

Kilburn Lake

KRL
KRL KRL KRL
KRL KRL KRL KRL

KILBURN LAKE (Area W of) SITE

Kilburn Area M-2175



AREA OF
KILBURN LAKE

DISTRICT OF
KENORA
(PATRICIA PORTION)

KENORA-RED LAKE
MINING DIVISION

SCALE: 1-INCH = 40 CHAINS

LEGEND

PATENTED LAND	Ⓟ
CROWN LAND SALE	C.S.
LEASES	Ⓛ
LOCATED LAND	Loc.
LICENSE OF OCCUPATION	L.O.
MINING RIGHTS ONLY	M.R.O.
SURFACE RIGHTS ONLY	S.R.O.
ROADS	—
IMPROVED ROADS	—
KING'S HIGHWAYS	—
RAILWAYS	—
POWER LINES	—
MARSH OR MUSKEG	—
MINES	⋈

NOTES

400' Reserve around all Lakes & Rivers
Dept. of Londs & Forests.



SYDNEY LAKE M-2210

PLAN NO. **M-2175**

DEPARTMENT OF MINES
— ONTARIO —

AREA OF

KILBURN LAKE

DISTRICT OF
KENORA
(PATRICIA PORTION)

KENORA-RED LAKE
MINING DIVISION

SCALE: 1-INCH = 40 CHAINS

LEGEND

PATENTED LAND	⊙
CROWN LAND SALE	C.S.
LEASES	⊕
LOCATED LAND	Loc
LICENSE OF OCCUPATION	L.O.
MINING RIGHTS ONLY	M.R.O.
SURFACE RIGHTS ONLY	S.R.O.
ROADS	—
IMPROVED ROADS	—
KING'S HIGHWAYS	—
RAILWAYS	—
POWER LINES	—
MARSH OR MUSKEG	—
MINES	⋆

NOTES

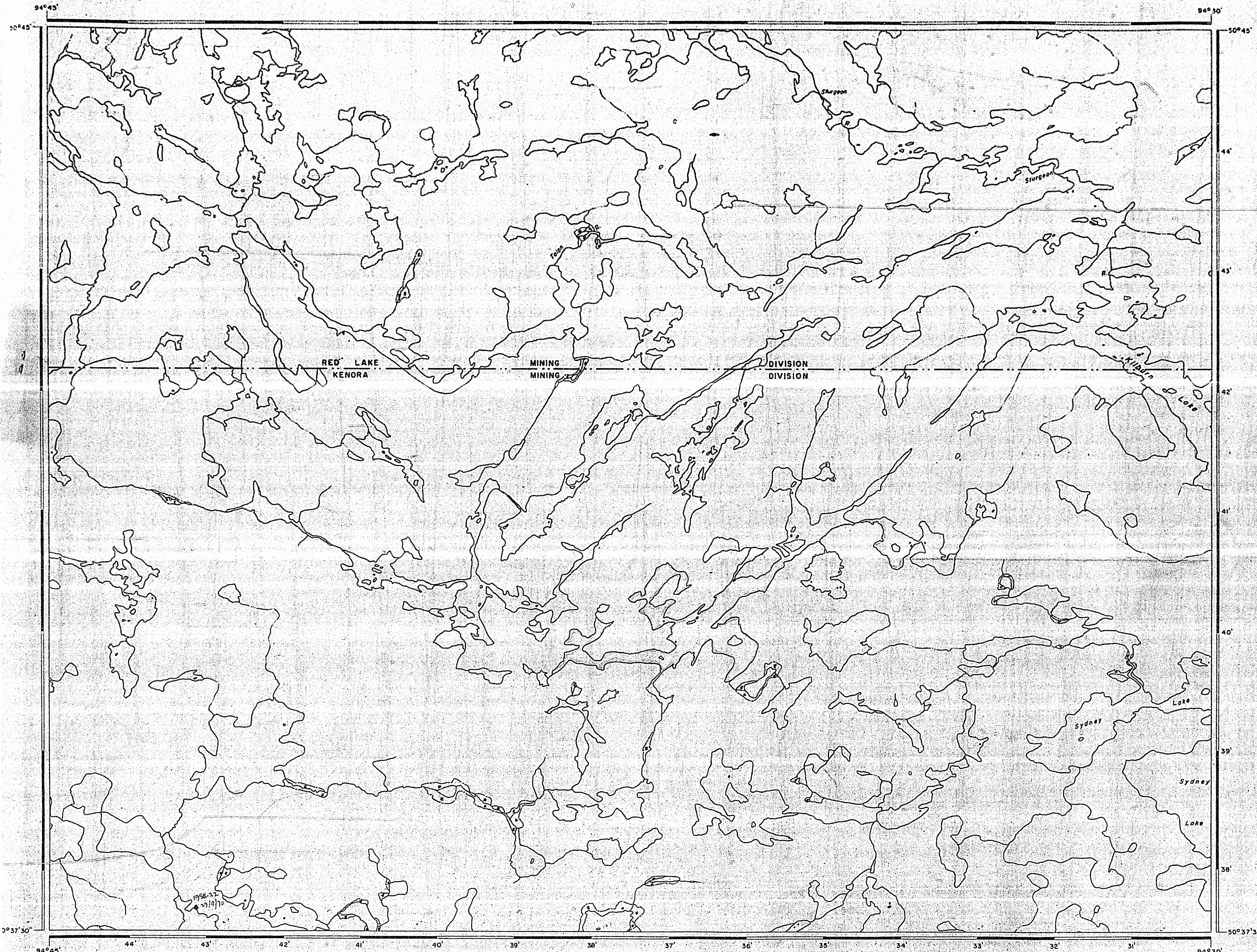
400' Reserve around all Lakes & Rivers
Dept. of Lands & Forests.



#1

PLAN NO. M-2175

DEPARTMENT OF MINES
- ONTARIO -



SYDNEY LAKE M-2210