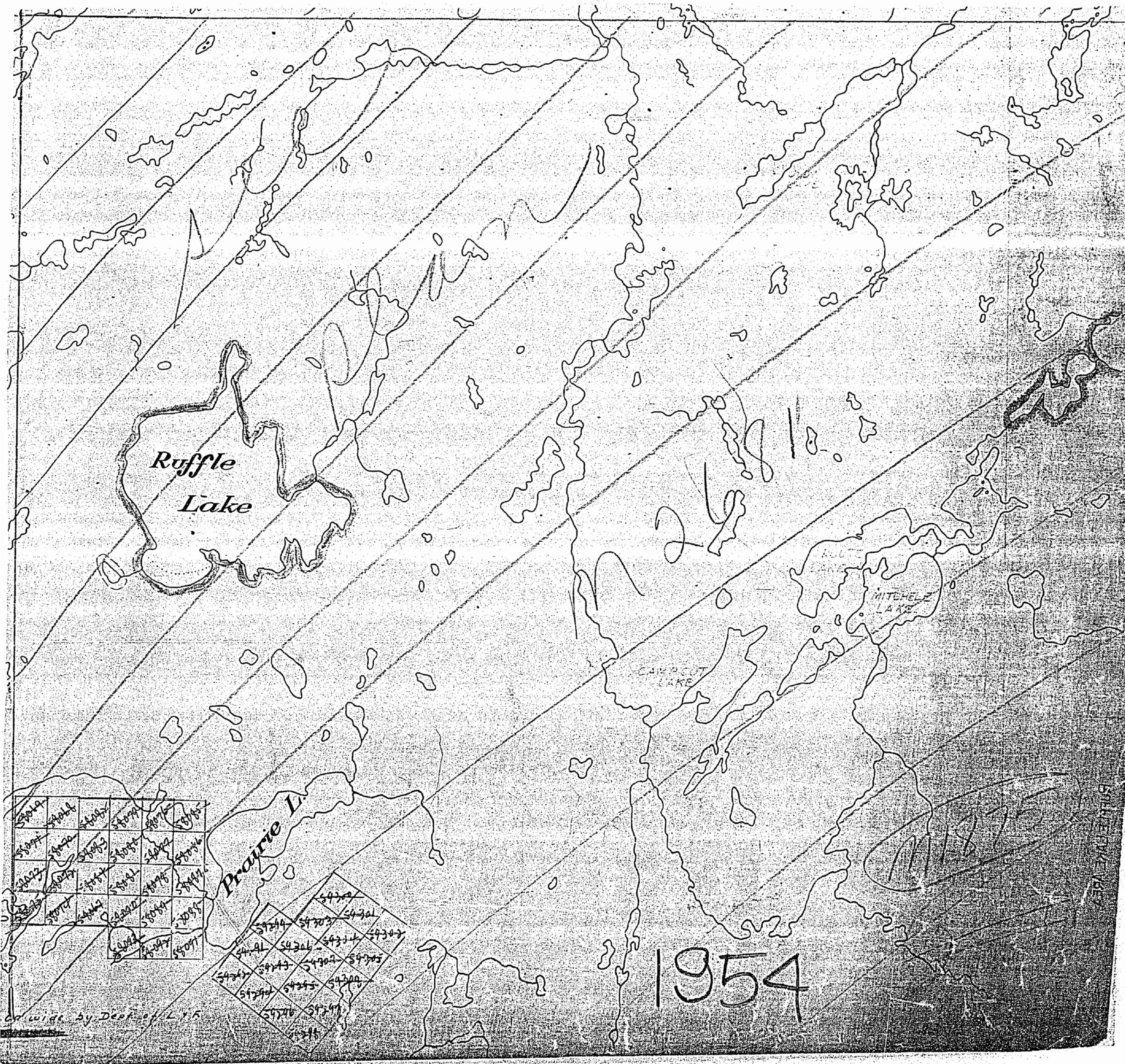
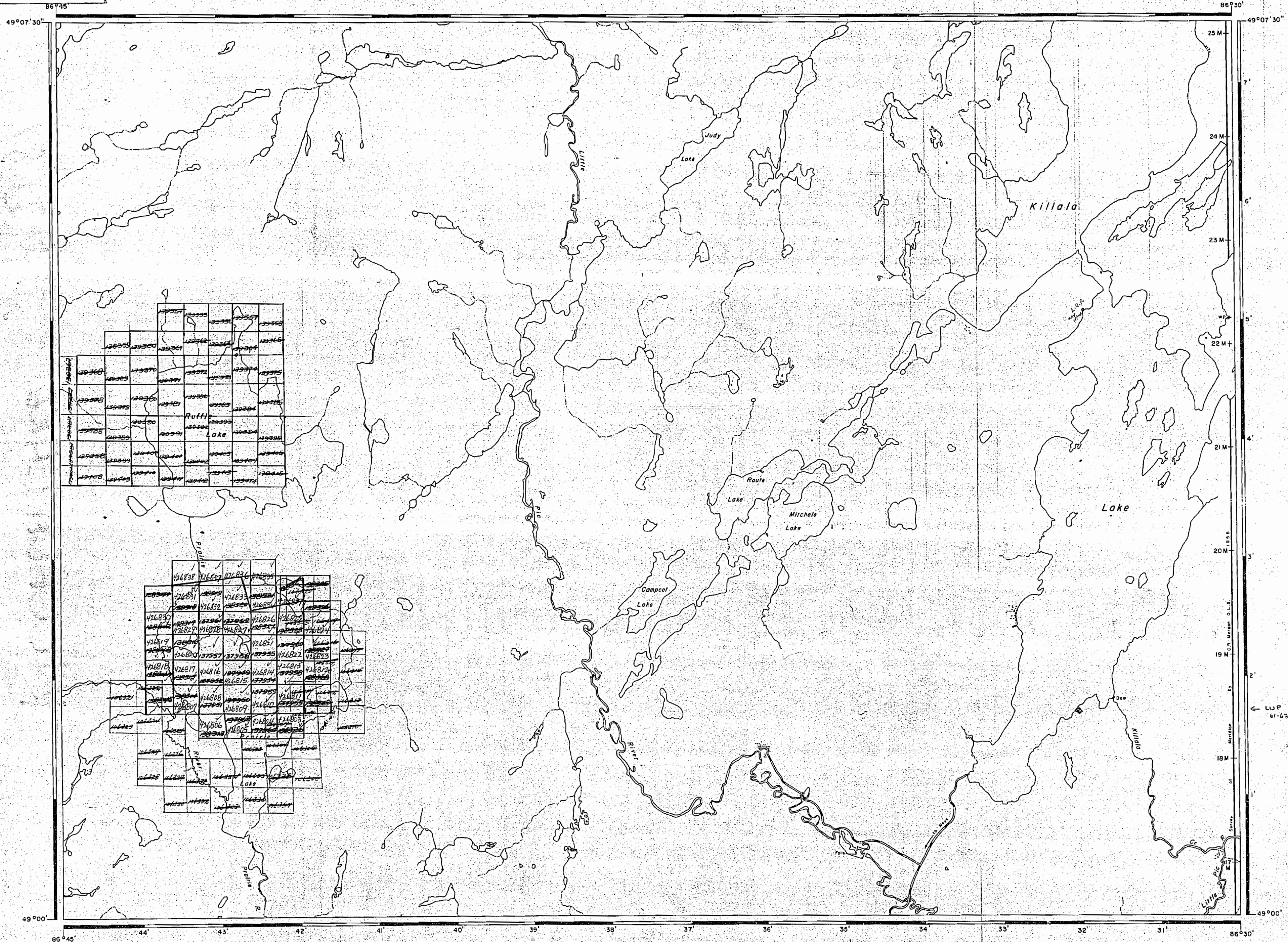


2681







AREA OF

# KILLALA LAKE

DISTRICT OF THUNDER BAY

PORT ARTHUR MINING DIVISION

SCALE: 1-INCH = 40 CHAINS

### LEGEND

- PATENTED LAND Ⓟ
- CROWN LAND SALE C.S.
- LEASES Ⓞ
- LOCATED LAND Loc.
- LICENSE OF OCCUPATION L.O.
- MINING RIGHTS ONLY M.R.O.
- SURFACE RIGHTS ONLY S.R.O.
- ROADS —
- IMPROVED ROADS —
- KING'S HIGHWAYS —
- RAILWAYS —
- POWER LINES —
- MARSH OR MUSKEG —
- MINES ⚡
- CANCELLED C.

### NOTES

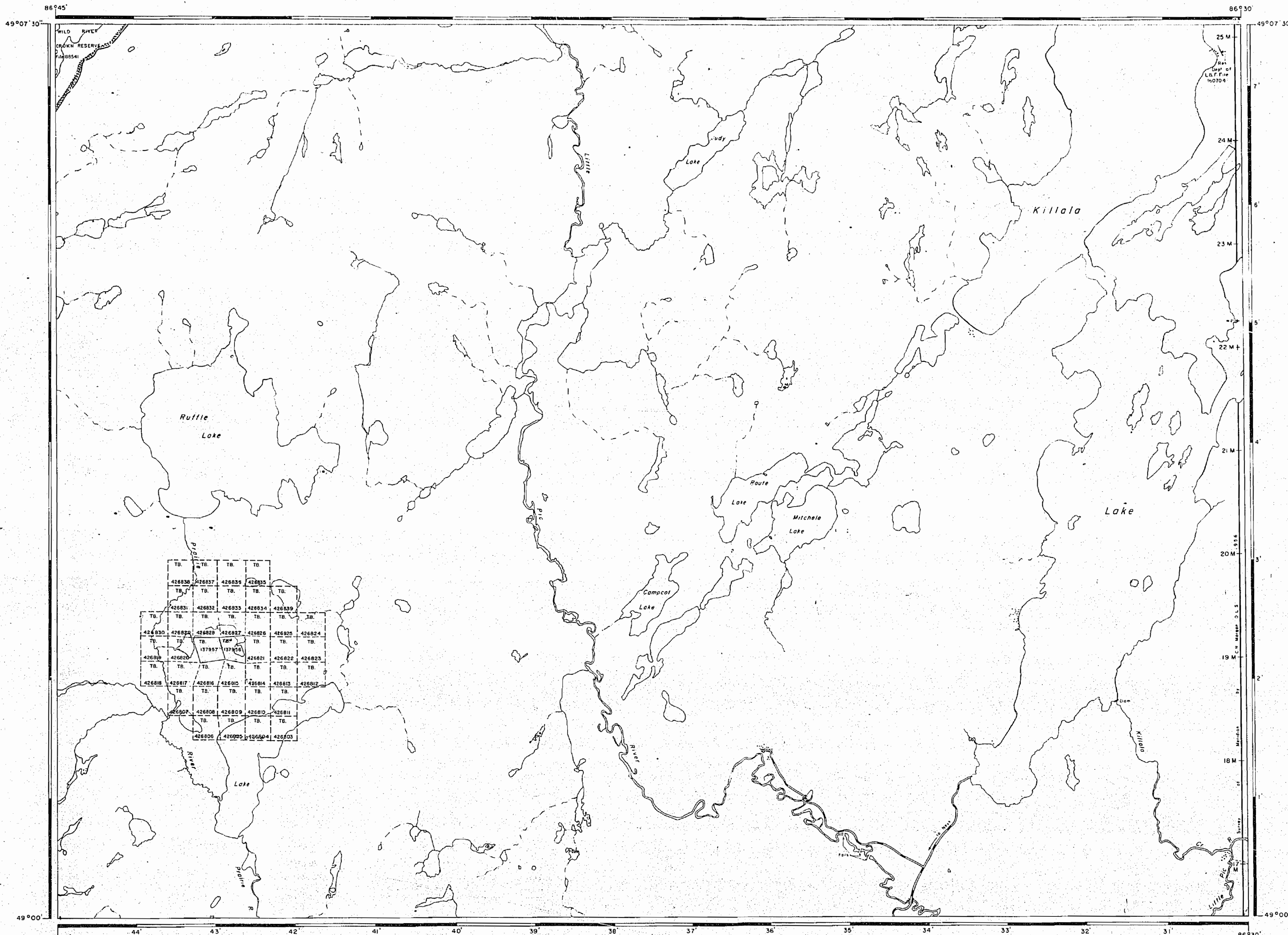
400' reserve around all lakes and rivers to Dept. of Lands & Forests.

1959



PLAN NO. M.2681





AREA OF  
**KILLALA LAKE**

DISTRICT OF  
THUNDER BAY

THUNDER BAY  
MINING DIVISION

SCALE: 1-INCH = 40 CHAINS

**LEGEND**

- PATENTED LAND Ⓟ
- CROWN LAND SALE C.S.
- LEASES Ⓛ
- LOCATED LAND Loc.
- LICENSE OF OCCUPATION L.O.
- MINING RIGHTS ONLY M.R.O.
- SURFACE RIGHTS ONLY S.R.O.
- ROADS —
- IMPROVED ROADS —
- KING'S HIGHWAYS —
- RAILWAYS —
- POWER LINES —
- MARSH OR MUSKEG —
- MINES ✕
- CANCELLED C

**NOTES**

400' reserve around all lakes and rivers  
to Dept. of Lands & Forests.

1977

MAR. 11/77

TERRACE BAY DIST.  
NATIONAL TOPOGRAPHIC. SERIES 42 E 2

PLAN NO. M.2681

ONTARIO  
MINISTRY OF NATURAL RESOURCES  
SURVEYS AND MAPPING BRANCH

ISLINGTON LAKE G-593

REFERENCES

AREAS WITHDRAWN FROM DISPOSITION

SR - SURFACE RIGHTS MR - MINING RIGHTS

Description Order No. Date Disposition File

\* Disposition by exploratory licence of occupation only

LEGEND

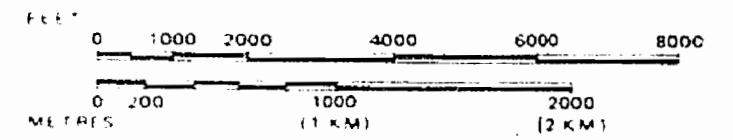
- HIGHWAY AND ROUTE No.
- OTHER ROADS
- TRAILS
- SURVEYED LINES
- TOWNSHIP BOUNDARIES, ETC.
- LOTS, MINING CLAIMS, PARCELS, ETC.
- UNSURVEYED LINES
- LOT LINES
- PARCEL BOUNDARIES
- MINING CLAIMS, ETC.
- RAILWAY AND RIGHT OF WAY
- UTILITY LINES
- NON PERENNIAL STREAM
- FLOODING OR FLOODING RIGHTS
- SUBDIVISION OR COMPOSITE PLAN
- RESERVATIONS
- ORIGINAL SHORELINE
- MARSH OR MUSKEG
- MINES
- TRAVERSE MONUMENT

DISPOSITION OF CROWN LANDS

TYPE OF DOCUMENT	SYMBOL
PATENT, SURFACE & MINING RIGHTS	●
" SURFACE RIGHTS ONLY	○
" MINING RIGHTS ONLY	○
LEASE, SURFACE & MINING RIGHTS	■
" SURFACE RIGHTS ONLY	■
" MINING RIGHTS ONLY	■
LICENCE OF OCCUPATION	◀
ORDER-IN-COUNCIL	OC
RESERVATION	⊙
CANCELLED	⊙
SAND & GRAVEL	⊙

NOTE: MINING RIGHTS IN PARCELS PATENTED PRIOR TO MAY 6 1913, VESTED IN ORIGINAL PATENTEE BY THE PUBLIC LANDS ACT, R.S.O. 1970, CHAP. 380, SEC. 63, SUBSEC. 1.

SCALE: 1 INCH = 40 CHAINS



AREA  
**KILLALA LAKE**

M.N.R. ADMINISTRATIVE DISTRICT  
**TERRACE BAY**  
MINING DIVISION  
**THUNDER BAY**  
LAND TITLES / REGISTRY DIVISION  
**THUNDER BAY**

Ministry of Natural Resources  
Land Management Branch  
Ontario

Date FEBRUARY, 1982

Number  
**G-596**

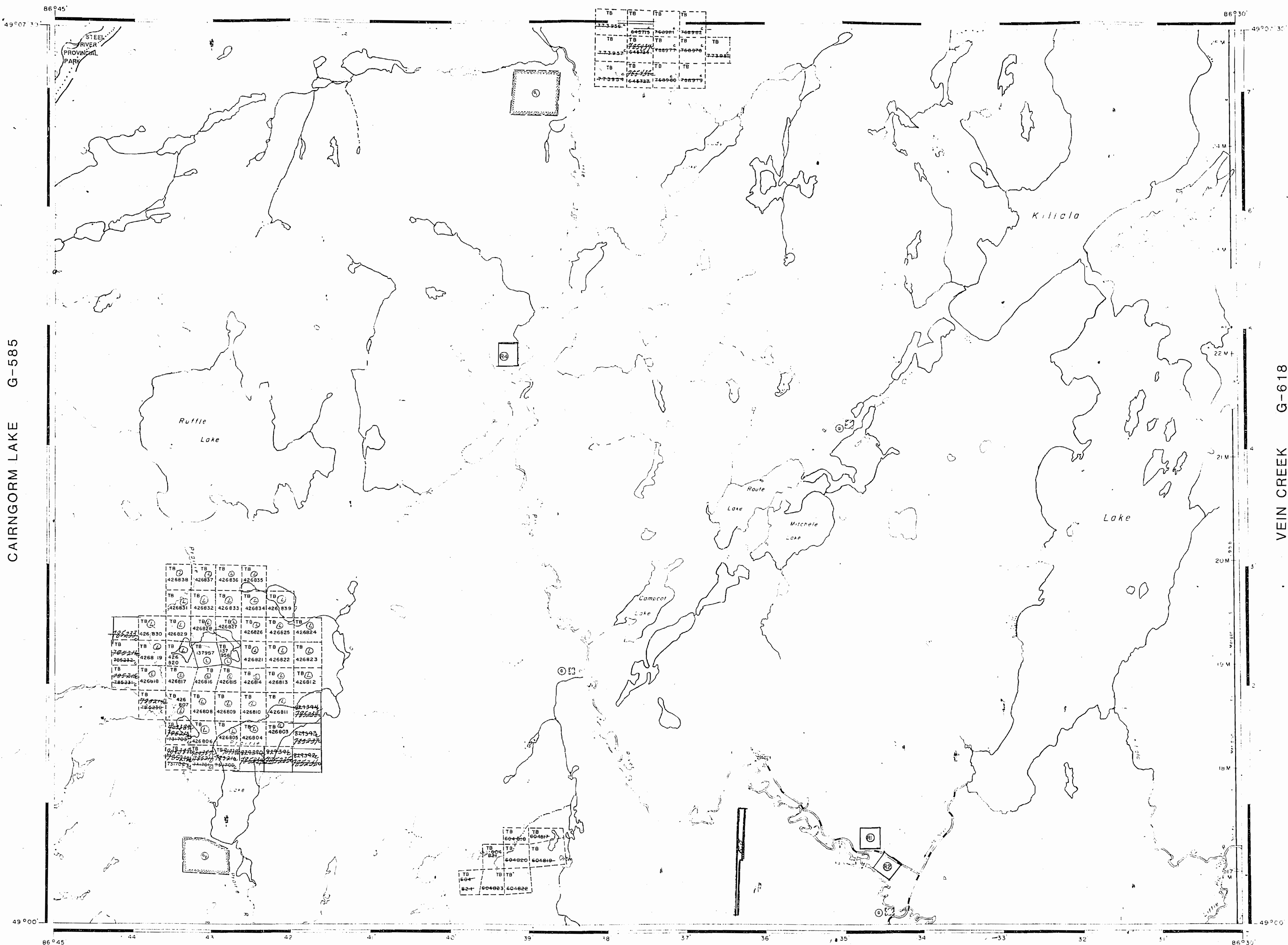
CAIRNGORM LAKE G-585

VEIN CREEK G-618

FOXTRAP LAKE G-592



ISLINGTON LAKE G-593



AREAS WITHDRAWN FROM DISPOSITION

S.R. - SURFACE RIGHTS M.R. - MINING RIGHTS

Description Order No. Date Disposition File

(11) Surface and mining rights withdrawn from staking Order W TB 30/95 95JUL26 NWR For Research Sample Plots

R3 Dec. 31/00 W51/8770R May 21/87 SLO. 188558 see Killala Lake Landfill.

(12) Surface and mining rights withdrawn from staking Order W TB 30/95 95JUL26 NWR For Research Sample Plots

(13) Surface and mining rights withdrawn from staking Order W TB 30/95 95JUL26 NWR For Research Sample Plots

**SAND AND GRAVEL**

(14) QUARRY PERMIT

(15) MNR GRAVEL RESERVE 20-5

**DATE OF ISSUE**

NOV 13 1998

PROVINCIAL RECORDING OFFICE - SUDBURY

THE INFORMATION THAT APPEARS ON THIS MAP HAS BEEN COMPILED FROM VARIOUS SOURCES, AND ACCURACY IS NOT GUARANTEED. THOSE WISHING TO STAKE MINING CLAIMS SHOULD CONSULT WITH THE MINING RECORDER, MINISTRY OF NORTHERN DEVELOPMENT AND MINES FOR ADDITIONAL INFORMATION ON THE STATUS OF THE LANDS SHOWN HEREON.

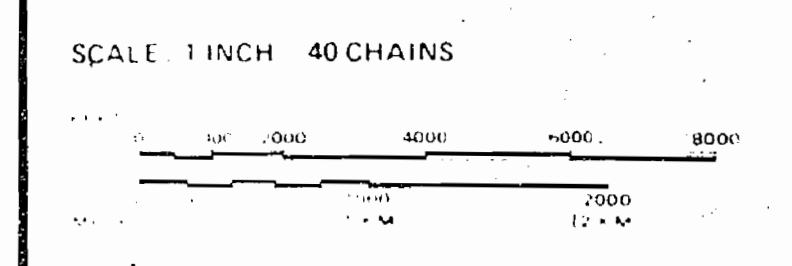
**LEGEND**

HIGHWAY AND ROUTE	---
OTHER ROAD	---
TRAIL	---
SURVEY LINES	---
TOWNSHIP BASE LINES ETC.	---
LOT LINES	---
UNSURVEYED	---
PAVED HIGHWAY	---
MINING CLAIM ETC.	---
RAILWAY AND RAILROAD	---
...	---
FLOODING OR FLOODING RIGHTS	---
SUBDIVISION OR COMPOSITE PLAN	---
RESERVATIONS	---
ORIGINAL SHORELINE	---
MARSH OR MIRE	---
MINES	---
TRAILER MONUMENT	---

**DISPOSITION OF CROWN LANDS**

TYPE OF DOCUMENT	SYMBOL
PATENT SURFACE & MINING RIGHTS	●
SURFACE RIGHTS ONLY	○
MINING RIGHTS ONLY	○
LEASE SURFACE & MINING RIGHTS	■
SURFACE RIGHTS ONLY	■
MINING RIGHTS ONLY	■
LICENCE OF OCCUPATION	▼
ORDER IN COUNCIL	OC
RESERVATION	○
CANCELLED	○
SAND & GRAVEL	○
LAND USE PERMITS FOR COMMERCIAL TOURISM, OUTPOST CAMPS	○

NOTE: MINING RIGHTS IN PARCELS PATENTED PRIOR TO MAY 6 1913 LISTED IN ORIGINAL PATENTEE BY THE PUBLIC LANDS ACT (R.S.O. 1970 CHAP. 390 SEC. 63 SUBSEC. 1)



**AREA**

**KILLALA LAKE**

M.N.R. ADMINISTRATIVE DISTRICT

**TERRACE BAY**

MINING DIVISION

**THUNDER BAY**

LAND TITLES / REGISTRY DIVISION

**THUNDER BAY**

Ministry of Natural Resources Ontario

Land Management Branch

DATE: MAY 24 1998

DATE: FEBRUARY, 1982

NUMBER: **G-596**

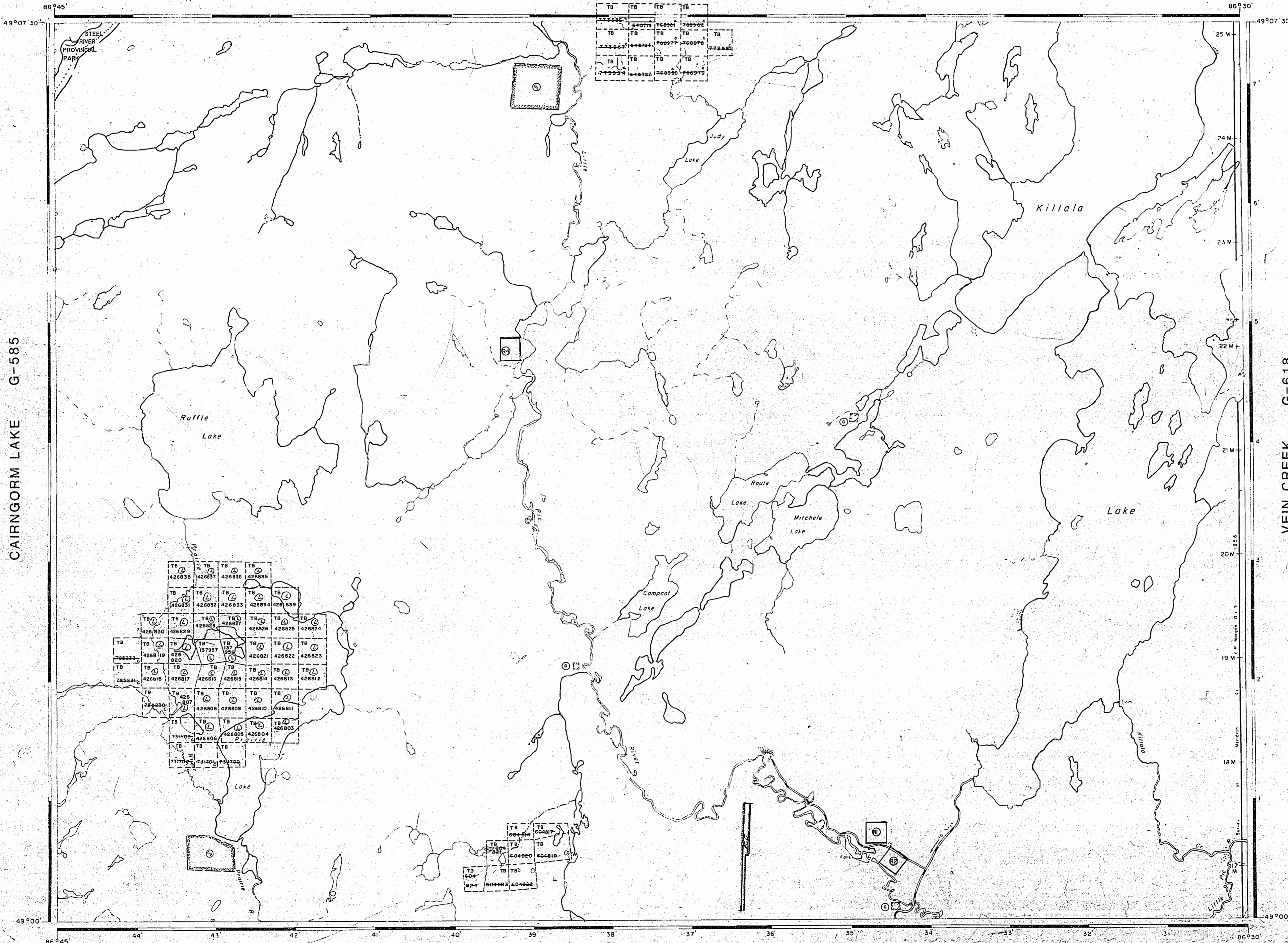
FOXTRAP LAKE G-592

CAIRNGORM LAKE G-585

VEIN CREEK G-618



ISLINGTON LAKE G-593



REFERENCES

AREAS WITHDRAWN FROM DISPOSITION

- S.R. - SURFACE RIGHTS M.R. - MINING RIGHTS
- Description Order No. Date Disposition File
- ① Surface and mining rights withdrawn from staking Order W TB 30/95 95JUL26 NWR For Research Sample Plots
  - ② R3 Dec. 30/80 W57187700C May 21/87 S.R. 18558 see Killala Lake Landroll.
  - ③ Surface and mining rights withdrawn from staking Order W TB 30/95 95JUL26 NWR For Research Sample Plots
  - ④ Surface and mining rights withdrawn from staking Order W TB 30/95 95JUL26 NWR For Research Sample Plots

SAND AND GRAVEL

- ⑤ QUARRY PERMIT
  - ⑥ MNR GRAVEL RESERVE 20-5
- ⑦ THE INFORMATION THAT APPEARS ON THIS MAP HAS BEEN COMPILED FROM VARIOUS SOURCES AND ACCURACY IS NOT GUARANTEED. THOSE WISHING TO STAKE MINING CLAIMS SHOULD CONSULT WITH THE MINING RECORDER, MINISTRY OF NORTHERN DEVELOPMENT AND MINES FOR ADDITIONAL INFORMATION ON THE STATUS OF THE LANDS SHOWN HEREON.

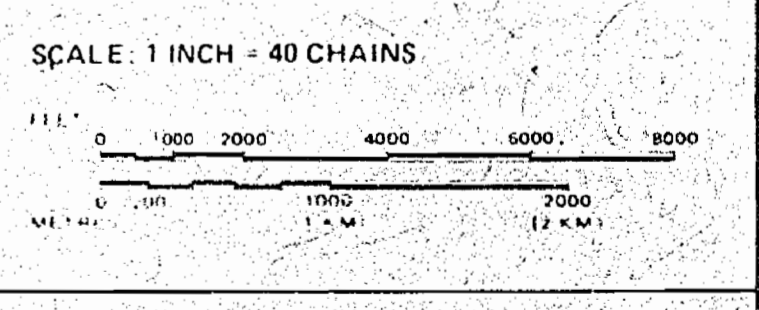
LEGEND

- HIGHWAY AND ROUTE NO.
- OTHER ROADS
- TRAILS
- SURVEYED LINES
  - TOWNSHIP BASE LINES, ETC.
  - LOTS MINING CLAIMS PARCELS, ETC.
- UNSURVEYED LINES
- LOT LINES
- PARCEL BOUNDARY
- MINING CLAIMS, ETC.
- RAILWAY AND RIGHT OF WAY
- UTILITY LINES
- NON PERMANENT STREAM
- FLOODING OR FLOODING RIGHTS
- SUBDIVISION OR COMPOSITE PLAN
- RESERVATIONS
- ORIGINAL SHORELINE
- MARSH OR MUSKEG
- MINES
- TRAVERSE MONUMENT

DISPOSITION OF CROWN LANDS

TYPE OF DOCUMENT	SYMBOL
PATENT, SURFACE & MINING RIGHTS	●
SURFACE RIGHTS ONLY	○
MINING RIGHTS ONLY	◐
LEASE, SURFACE & MINING RIGHTS	■
SURFACE RIGHTS ONLY	□
MINING RIGHTS ONLY	◻
LICENCE OF OCCUPATION	▽
ORDER-IN-COUNCIL	OC
RESERVATION	○
CANCELLED	⊙
SAND & GRAVEL	⊕
LAND USE PERMITS FOR COMMERCIAL TOURISM/OUTPOST CAMPS	⊗

NOTE: MINING RIGHTS IN PARCELS PATENTED PRIOR TO MAY 6, 1913 VESTED IN ORIGINAL PATENTEE BY THE PUBLIC LANDS ACT, R.S.O. 1970 CHAP. 380, SEC. 63, SUBSEC. 1.

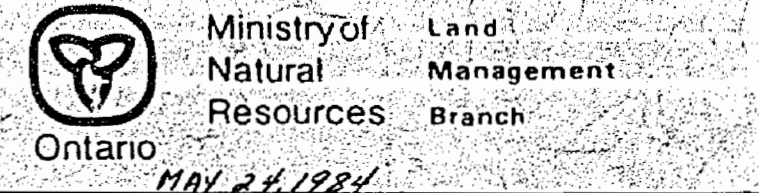


AREA  
**KILLALA LAKE**

M.N.R. ADMINISTRATIVE DISTRICT  
**TERRACE BAY**

MINING DIVISION  
**THUNDER BAY**

LAND TITLES / REGISTRY DIVISION  
**THUNDER BAY**



Date: FEBRUARY, 1982

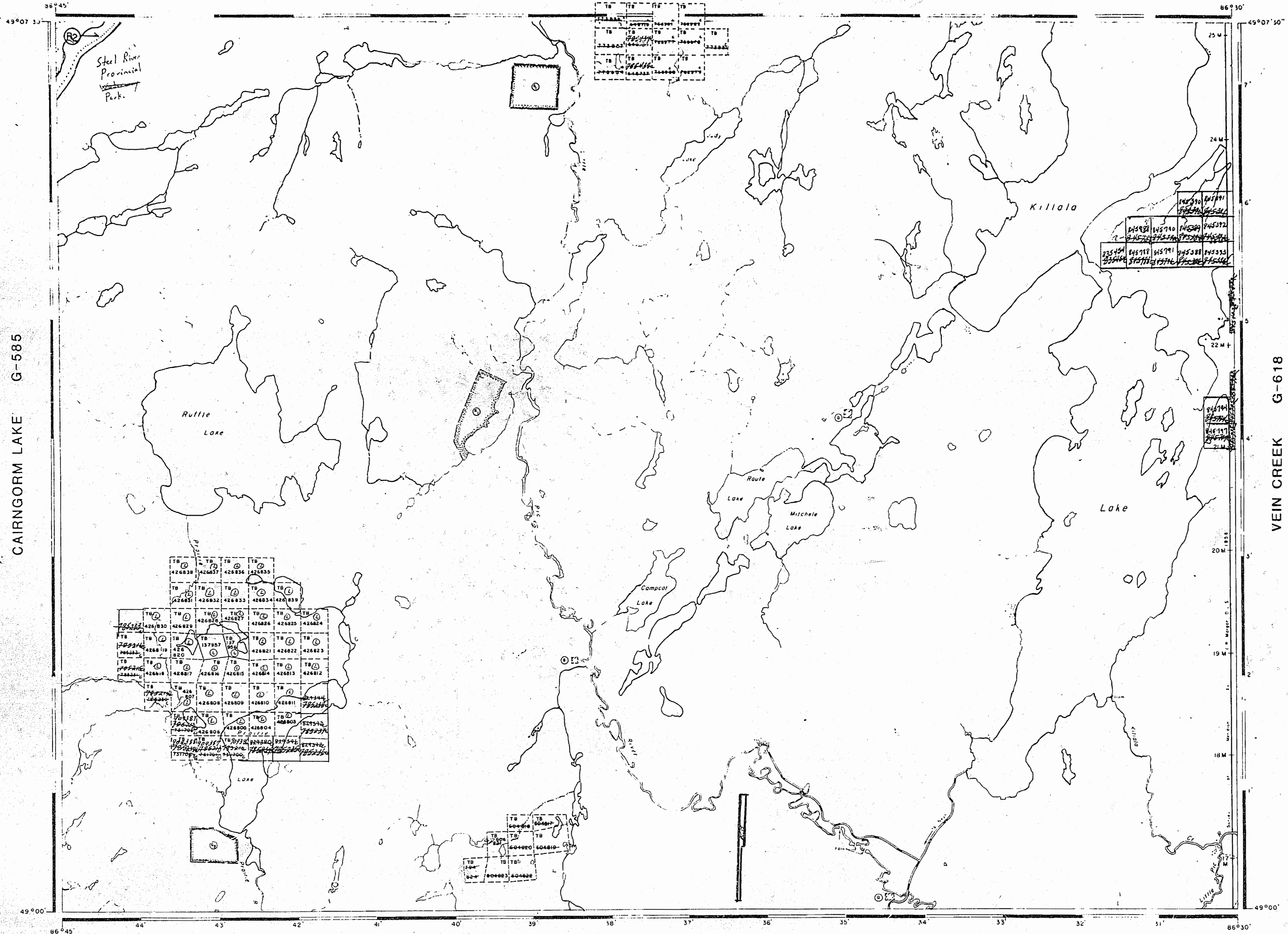
Number: **G-596**

FOXTRAP LAKE G-592

VEIN CREEK G-618

CAIRNGORM LAKE G-585





AREAS WITHDRAWN FROM DISPOSITIVE

Description	Order No.	Date	Disposition	1
SEC 36/82	W/12/82	28/10/82	S.R.	18
PARK RESERVE - W/1/82 6/9/82 U.S. 101 DISPOSITION BY EXPLORATORY LICENSE OF OCCUPY REG. DEC. 30/88 W/1/87/88 2/11/87 S.R. 18 See Killala Lake Lands Regulated Steel River Provincial Park - boundary OK.				

SAND AND GRAVEL

- ① QUARRY PERMIT
- ② MNR GRAVEL RESERVE 20-6
- ③

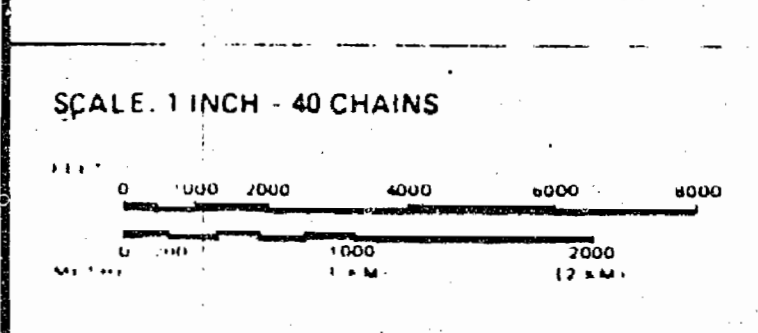
LEGEND

HIGHWAY AND HIGHWAY	—
OTHER ROADS	—
TRAILS	—
SURVEYED LINES	—
TOWNSHIP BASE LINES ETC.	—
LOTS MINING CLAIMS PARCELS ETC.	—
UNSURVEYED LINES	—
LOT LINES	—
PARCEL BOUNDARY	—
MINING CLAIMS ETC.	—
RAILWAY AND RIGHT OF WAY	—
UTILITY LINES	—
FLOODING (OR FLOODING RIGHTS)	—
SUBDIVISION OR COMPOSITE PLAN	—
RESERVATIONS	—
ORIGINAL SHORELINE	—
MARSH (OR MUSKEG)	—
MINES	—
TRAVERSE MONUMENT	—

DISPOSITION OF CROWN LANDS

TYPE OF DOCUMENT	SYMBOL
PATENT, SURFACE & MINING RIGHTS	●
" SURFACE RIGHTS ONLY	○
" MINING RIGHTS ONLY	○
LEASE, SURFACE & MINING RIGHTS	LI
" SURFACE RIGHTS ONLY	○
" MINING RIGHTS ONLY	○
LICENCE OF OCCUPATION	○
ORDER IN COUNCIL	OC
RESERVATION	○
CANCELLED	○
SAND & GRAVEL	○

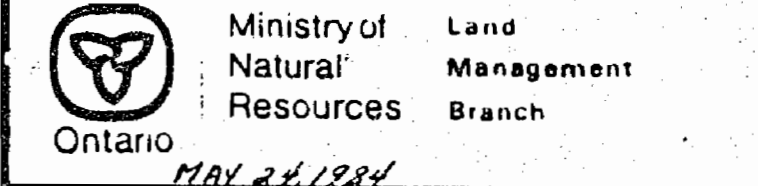
NOTE: MINING RIGHTS IN PARCELS PATENTED PRIOR TO MAY 6 1913 VESTED IN ORIGINAL PATENTEE BY THE PUBLIC LANDS ACT R.S.O. 1970 CHAP. 380, SEC. 63 SUBSEC. 1



AREA Steel River Provincial Park

# KILLALA LAKE

M.N.R. ADMINISTRATIVE DISTRICT  
**TERRACE BAY**  
 MINING DIVISION  
**THUNDER BAY**  
 LAND TITLES / REGISTRY DIVISION  
**THUNDER BAY**

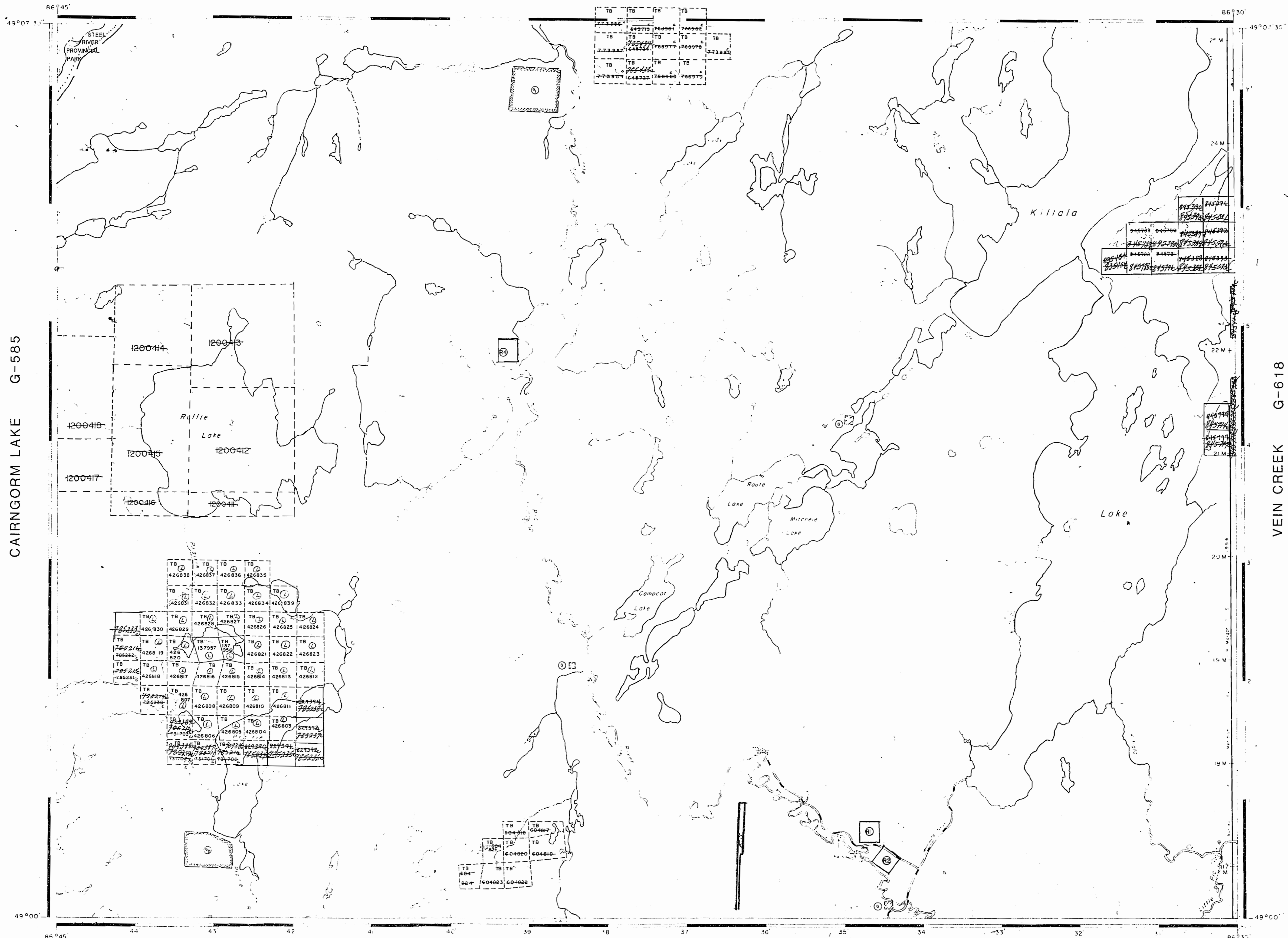


Date FEBRUARY, 1982 Number **G-596**

CAIRNGORM LAKE G-585

VEIN CREEK G-618

ISLINGTON LAKE G-593



REFERENCES

AREAS WITHDRAWN FROM DISPOSITION

S.R. - SURFACE RIGHTS M.R. - MINING RIGHTS

Description	Order No.	Date	Disposition	File
Surface and mining rights withdrawn from staking Order W TB 30/95				95JUL26 NWR For Research Sample Plots
R3 Dec. 30/88 W37/87 M.R. May 21/87 S.P.O. 18558 see Killala Lake Journal.				
Surface and mining rights withdrawn from staking Order W TB 30/95				95JUL26 NWR For Research Sample Plots
Surface and mining rights withdrawn from staking Order W TB 30/95				95JUL26 NWR For Research Sample Plots

SAND AND GRAVEL

QUARRY PERMIT  
MNR GRAVEL RESERVE 2D-5

THE INFORMATION THAT APPEARS ON THIS MAP HAS BEEN COMPILED FROM VARIOUS SOURCES, AND ACCURACY IS NOT GUARANTEED. THOSE WISHING TO STAKE MINING CLAIMS SHOULD CONSULT WITH THE MINING RECORDER, MINISTRY OF NORTHERN DEVELOPMENT AND MINES, FOR ADDITIONAL INFORMATION ON THE STATUS OF THE LANDS SHOWN HEREON.

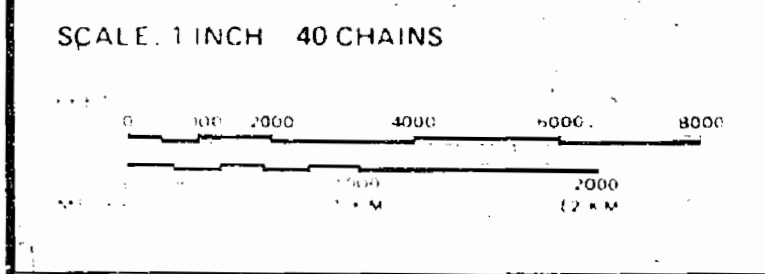
LEGEND

- HIGHWAY AND ROAD
- OTHER ROADS
- TRAILS
- SURVEYED LINES
- TOWNSHIP'S BASE LINES, ETC.
- LOT LINES, LAKE PARCELS, ETC.
- UNSURVEYED LINES
- LOT LINES
- PARCEL BOUNDARIES
- MINING CLAIMS, ETC.
- RAILWAY AND RAILWAY
- RESERVATIONS
- ORIGINAL SHORELINE
- MARSH OR MUCKEG
- MINES
- TRAVERSE MONUMENT

DISPOSITION OF CROWN LANDS

TYPE OF DOCUMENT	SYMBOL
PATENT SURFACE & MINING RIGHTS	●
SURFACE RIGHTS ONLY	○
MINING RIGHTS ONLY	◐
LEASE SURFACE & MINING RIGHTS	■
SURFACE RIGHTS ONLY	◼
MINING RIGHTS ONLY	◻
LICENCE OF OCCUPATION	▼
ORDER IN COUNCIL	OC
RESERVATION	⊙
CANCELLED	⊘
SAND & GRAVEL	⊕
LAND USE PERMITS FOR COMMERCIAL TOURISM, OUTPOST CAMPS	⊖

NOTE: MINING RIGHTS IN PARCELS PATENTED PRIOR TO MAY 1 1913 VESTED IN ORIGINAL PATENTEE BY THE PUBLIC LANDS ACT (R.S.O. 1910 CHAP. 390 SEC. 83 SUBSEC. 1)



AREA

# KILLALA LAKE

M.N.R. ADMINISTRATIVE DISTRICT

## TERRACE BAY

MINING DIVISION

## THUNDER BAY

LAND TITLES / REGISTRY DIVISION

## THUNDER BAY

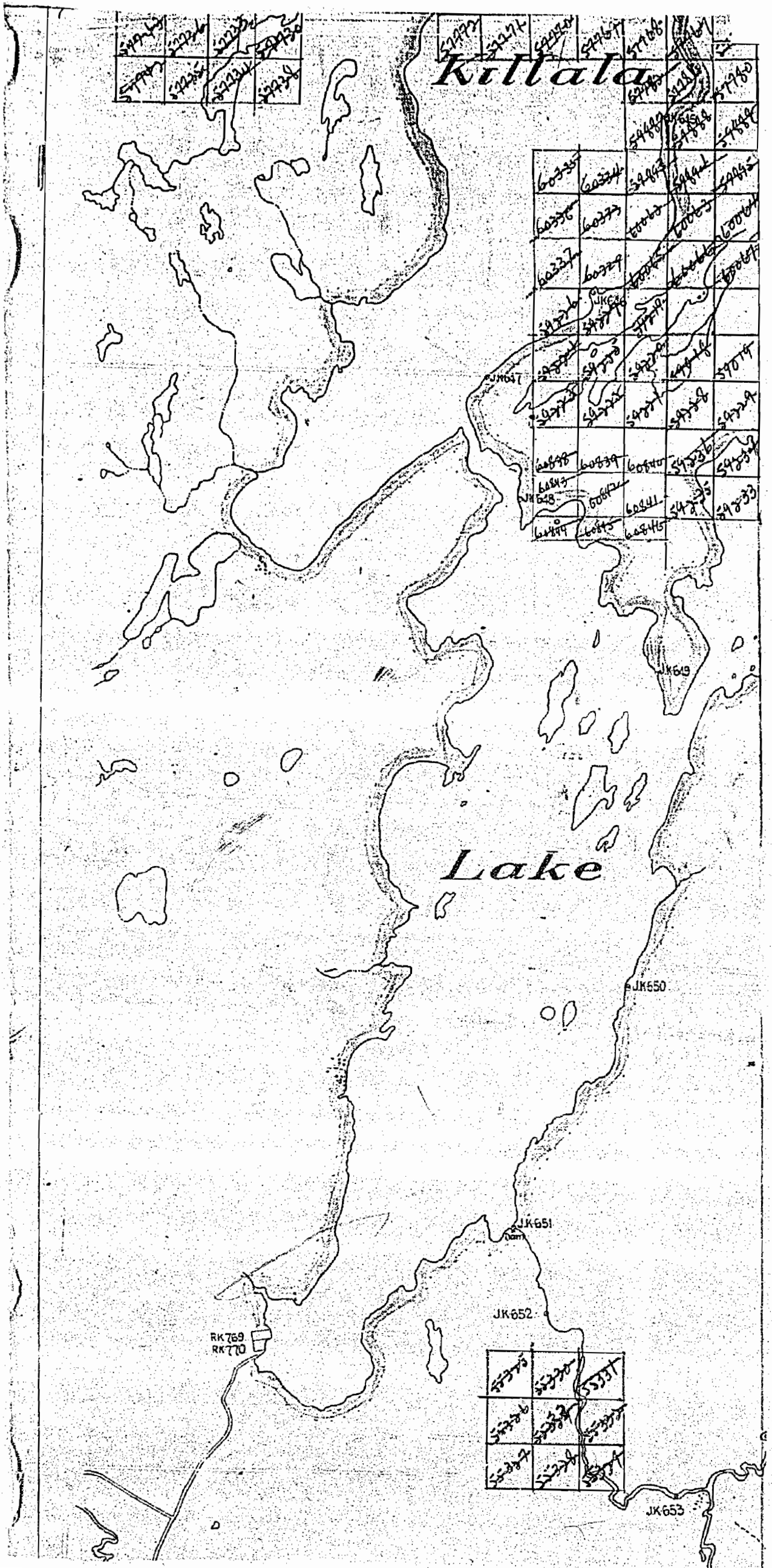
Ministry of Natural Resources  
Land Management Branch  
Ontario

Date: MAY 24 1984  
FEBRUARY, 1982  
Number: **G-596**

FOXTRAP LAKE G-592



2681





AREA OF  
**KILLALA LAKE**  
 DISTRICT OF THUNDER BAY  
 PORT ARTHUR MINING DIVISION  
 SCALE: 1-INCH = 40 CHAINS

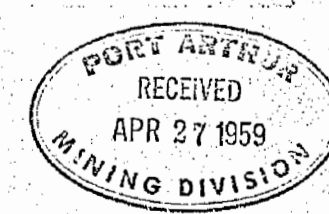
**LEGEND**

- |                        |        |
|------------------------|--------|
| PATENTED LAND          | Ⓟ      |
| CROWN LAND SALE LEASES | C.S.   |
| LOCATED LAND           | Ⓛ      |
| LICENSE OF OCCUPATION  | L.O.   |
| MINING RIGHTS ONLY     | M.R.O. |
| SURFACE RIGHTS ONLY    | S.R.O. |
| ROADS                  | —      |
| IMPROVED ROADS         | —      |
| KING'S HIGHWAYS        | —      |
| RAILWAYS               | —      |
| POWER LINES            | —      |
| MARSH OR MUSKEG        | —      |
| MINES                  | ⚡      |
| CANCELLED              | C.     |

**NOTES**

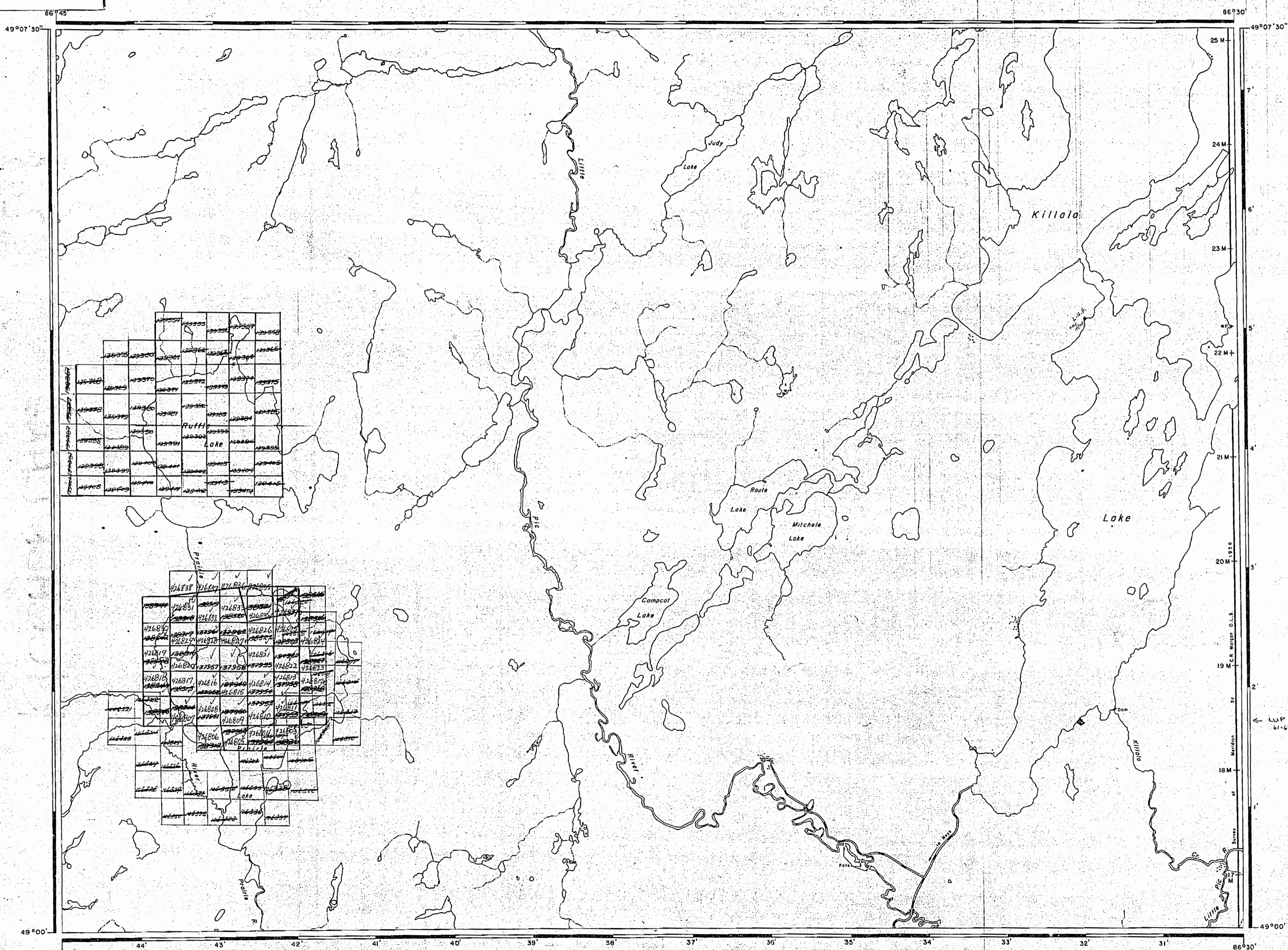
400' reserve around all lakes and rivers to Dept. of Lands & Forests.

1959

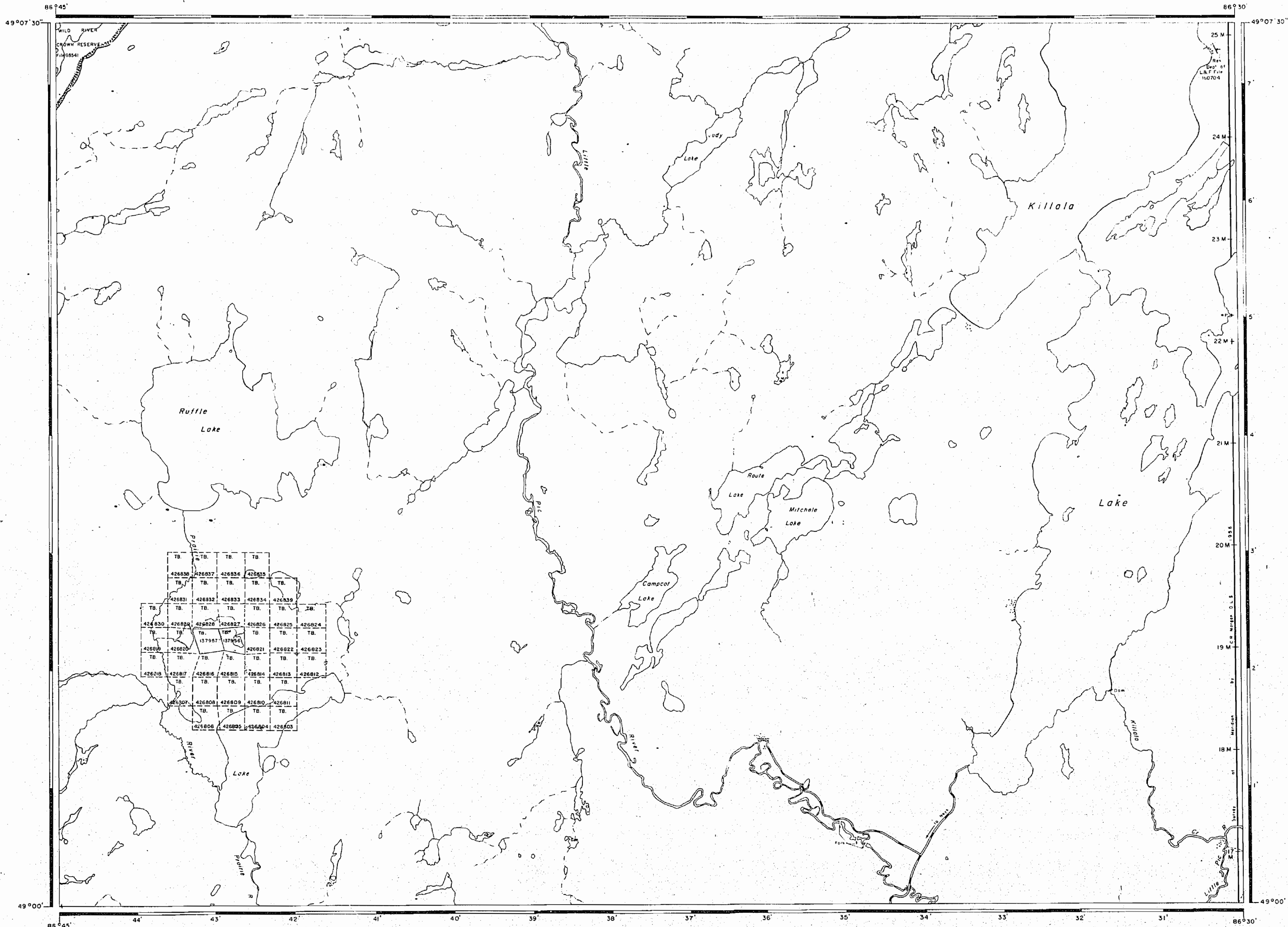


PLAN NO. M.2681

DEPARTMENT OF MINES







AREA OF  
**KILLALA LAKE**  
 DISTRICT OF  
 THUNDER BAY  
 THUNDER BAY  
 MINING DIVISION  
 SCALE: 1-INCH = 40 CHAINS

**LEGEND**

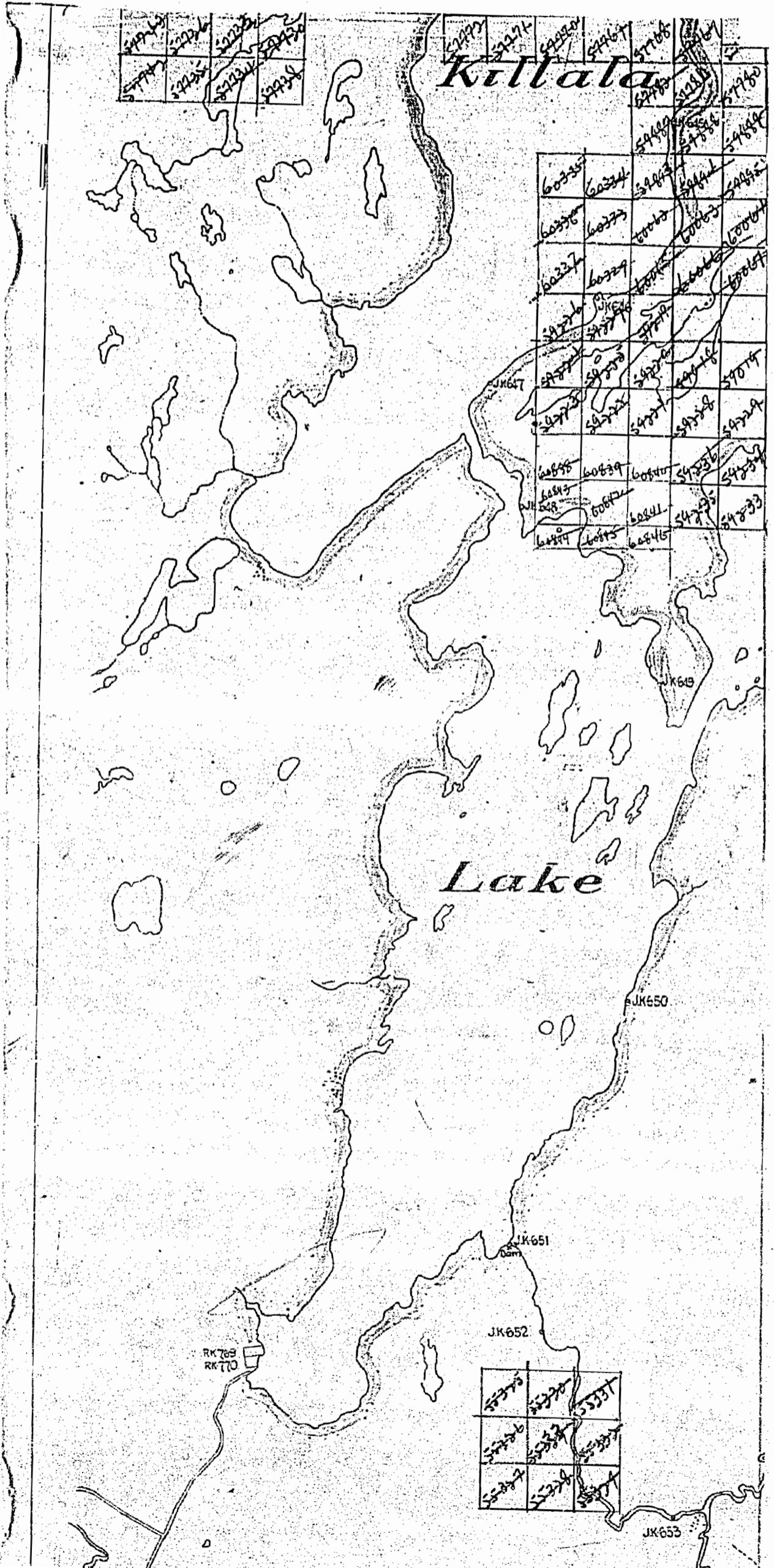
PATENTED LAND	Ⓟ
CROWN LAND SALE	C.S.
LEASES	Ⓞ
LOCATED LAND	L.C.
LICENSE OF OCCUPATION	L.O.
MINING RIGHTS ONLY	M.R.O.
SURFACE RIGHTS ONLY	S.R.O.
ROADS	—
IMPROVED ROADS	—
KING'S HIGHWAYS	—
RAILWAYS	—
POWER LINES	—
MARSH OR MUSKEG	—
MINES	✕
CANCELLED	C

**NOTES**

400' reserve around all lakes and rivers to Dept. of Lands & Forests.

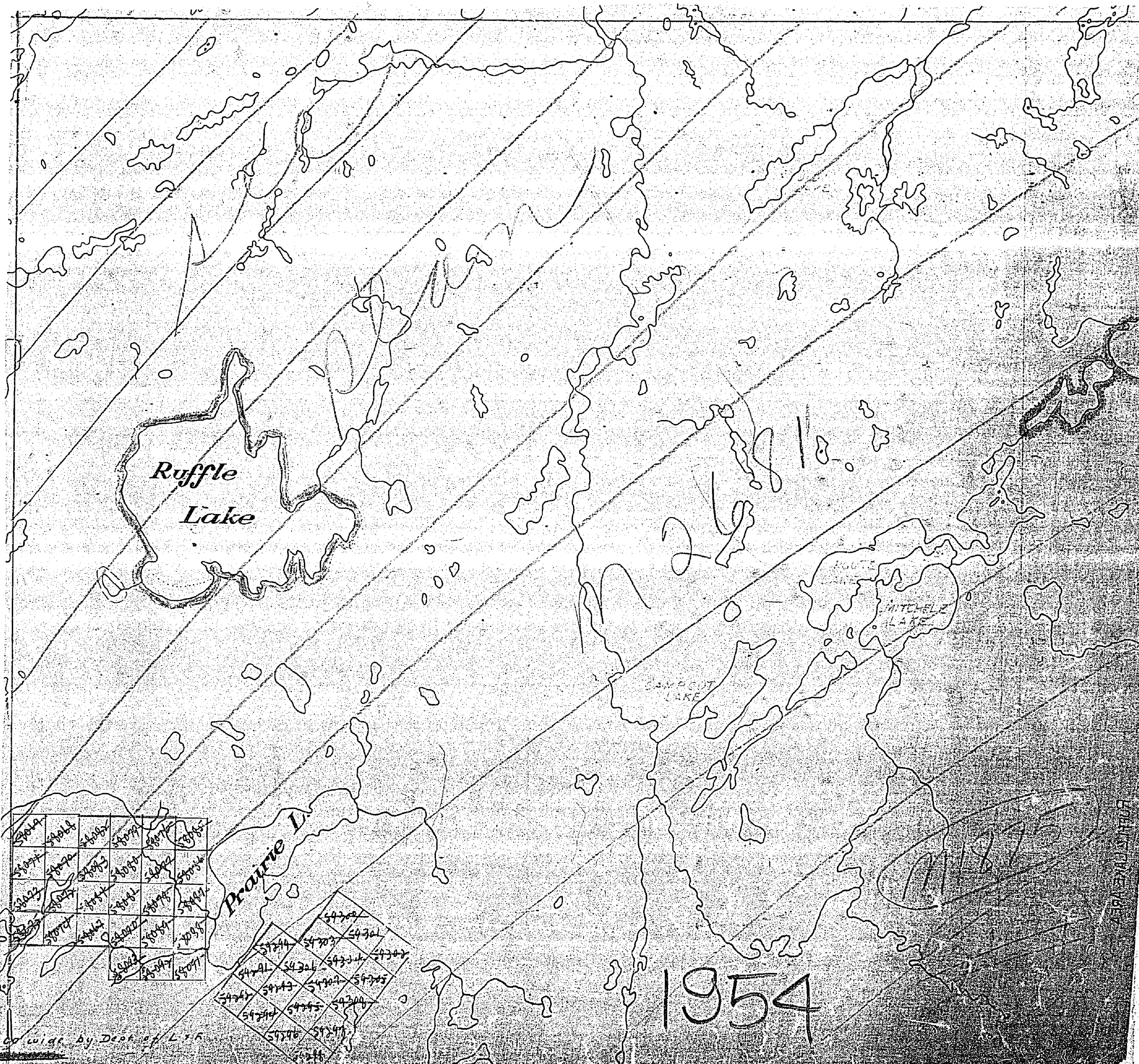
1977  
 MAR. 11/77  
 TERRACE BAY DIST.  
 NATIONAL TOPOGRAPHIC SERIES 42 E 2  
 PLAN NO. **M.2681**  
 ONTARIO  
 MINISTRY OF NATURAL RESOURCES  
 SURVEYS AND MAPPING BRANCH







2681



Copyright by Dept. of L & R

1954

EDWARDS & KELCEY



ISLINGTON LAKE G-593

CAIRNGORM LAKE G-585

VEIN CREEK G-618

FOXTRAP LAKE G-592

REFERENCES

AREAS WITHDRAWN FROM DISPOSITION

1. SURFACE RIGHTS  
 2. MINING RIGHTS  
 Description: Class No. Date: Description: Class No. Date:  
 1. 11/22/74 New for Eastern Sample Plots

23 Jan 1977 10/21/75 2000 Project 500, 15500  
 see Killala Lake Record.  
 3. Surface and mining rights withdrawn from Mining Order # TB 30/75  
 954225 MNR For Research Sample Plots  
 4. Surface and mining rights withdrawn from Mining Order # TB 30/75  
 954225 MNR For Research Sample Plots

LAND AND GRAVEL

1. QUARRY RESERVE  
 2. SAND RESERVE  
 3. THE INFORMATION THAT APPEARS ON THIS MAP HAS BEEN COMPILED FROM VARIOUS SOURCES AND ACCURACY IS NOT GUARANTEED. THOSE WISHING TO MAKE MINING CLAIMS SHOULD CONSULT WITH THE MINING RECORDER, MINISTRY OF NORTHERN DEVELOPMENT AND MINES, FOR ADDITIONAL INFORMATION ON THE STATUS OF THE LANDS SHOWN HEREBY.

LEGEND

- BOUNDARY LINE
- TRAIL
- SURFACE RIGHTS
- MINING RIGHTS
- UNRESERVED LAND
- PAVED ROAD
- MINING RESERVE
- RAILWAY AND HIGHWAY
- WATER COURSE
- FLOODING RIGHTS
- SUBDIVISION OR COMPOSITE PLAN
- RESERVATION
- ORIGINAL SURVEY LINE
- MANHOOD MARKER
- MINING TRAIL
- TRAIL
- TRAIL MONUMENT

DISPOSITION OF CROWN LANDS

TYPE OF DOCUMENT	SYMBOL
PATENT SURFACE & MINING RIGHTS	●
SURFACE RIGHTS ONLY	○
MINING RIGHTS ONLY	○
LEASE SURFACE & MINING RIGHTS	■
SURFACE RIGHTS ONLY	□
MINING RIGHTS ONLY	□
LICENSE OF OCCUPATION	▽
ORDER IN COUNCIL RESERVATION	OC
CANCELLED	○
SAND & GRAVEL	○
LAND USE PERMITS FOR COMMERCIAL DISPOSURE	○

DATE OF ISSUE  
 NOV 19 1998  
 PROVINCIAL RECORDING  
 NOTE: MINING RIGHTS IN THESE PATENTS PRIOR TO MAY 8 1975 EXIST IN ORIGINAL PATENTS BY THE PUBLIC LANDS ACT R.S.O. 1960, CHAP. 160, SEC. 43 SUBSEC. 1

SCALE 1 INCH = 40 CHAINS

AREA  
**KILLALA LAKE**  
 M.N.R. ADMINISTRATIVE DISTRICT  
**TERRACE BAY**  
 MINING DIVISION  
**THUNDER BAY**  
 LAND TITLES / REGISTRY DIVISION  
**THUNDER BAY**

Ministry of Natural Resources  
 Land Management Branch  
 Ontario

Date: FEBRUARY, 1982  
 Number: **G-596**

