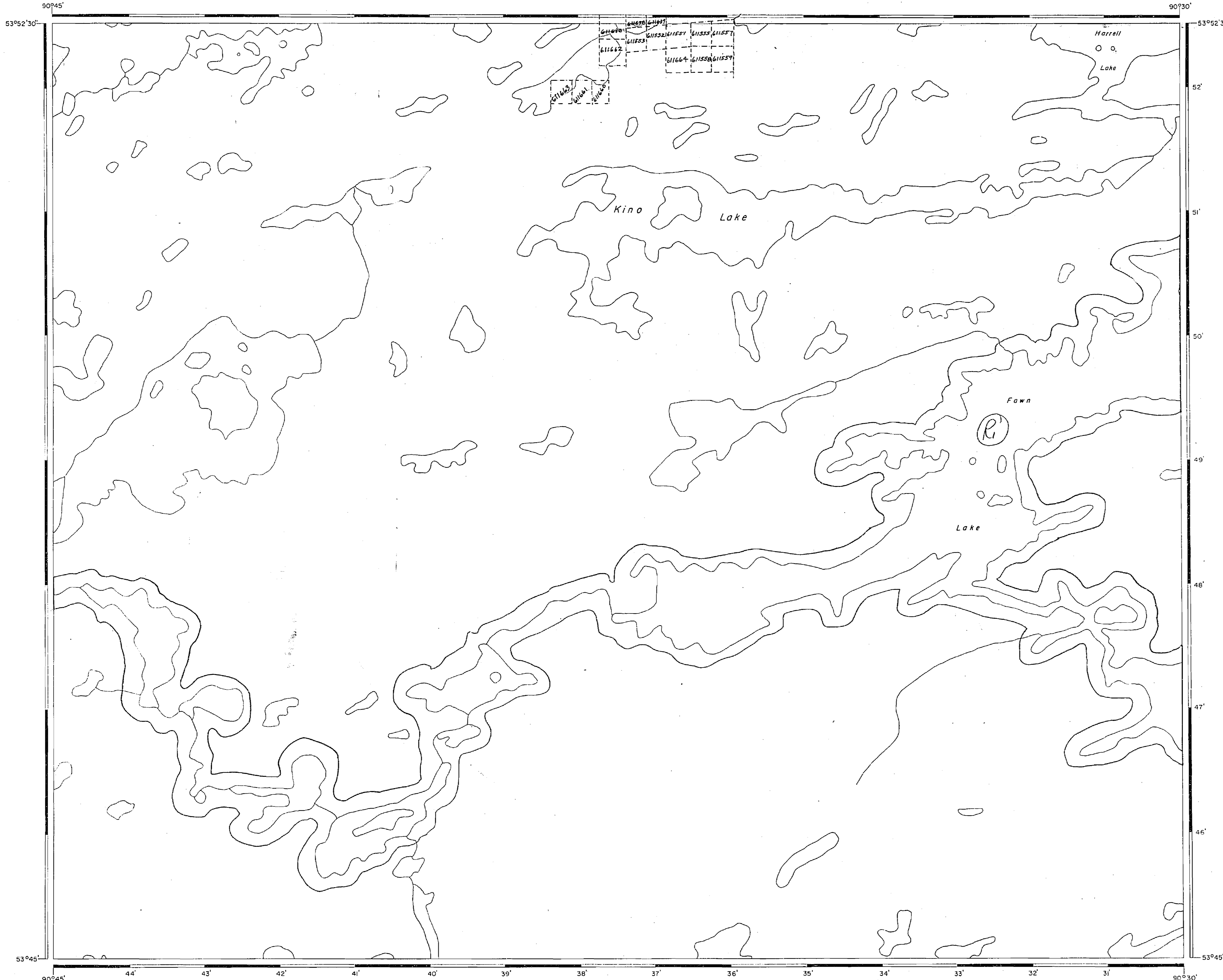


Tweddle Lake Area-M.2755



AREA OF
KINO LAKE
 DISTRICT OF
KENORA
 PATRICIA PORTION
 PATRICIA
 MINING DIVISION
 SCALE: 1-INCH = 40 CHAINS

LEGEND

PATENTED LAND	Ⓟ
CROWN LAND SALE	C.S.
LEASES	Ⓛ
LOCATED LAND	Loc.
LICENSE OF OCCUPATION	L.O.
MINING RIGHTS ONLY	M.R.O.
SURFACE RIGHTS ONLY	S.R.O.
ROADS	—
IMPROVED ROADS	—
KING'S HIGHWAYS	—
RAILWAYS	—
POWER LINES	—
MARSH OR MUSKEG	—
MINES	✕
CANCELLED	C.

NOTES
 400' Reserve around all Lakes & Rivers
 to Dept. of Lands & Forests

NOT TO BE USED FOR SURVEY PURPOSES
 Oct. 15, 1982
 (R) W40/83 Aug. 23/83 M+S 188538
 * Candidate Park
 * Mineral Exploration Allowed via Exploratory
 Licence of Occupation
 Updated Jan. 5, 1984

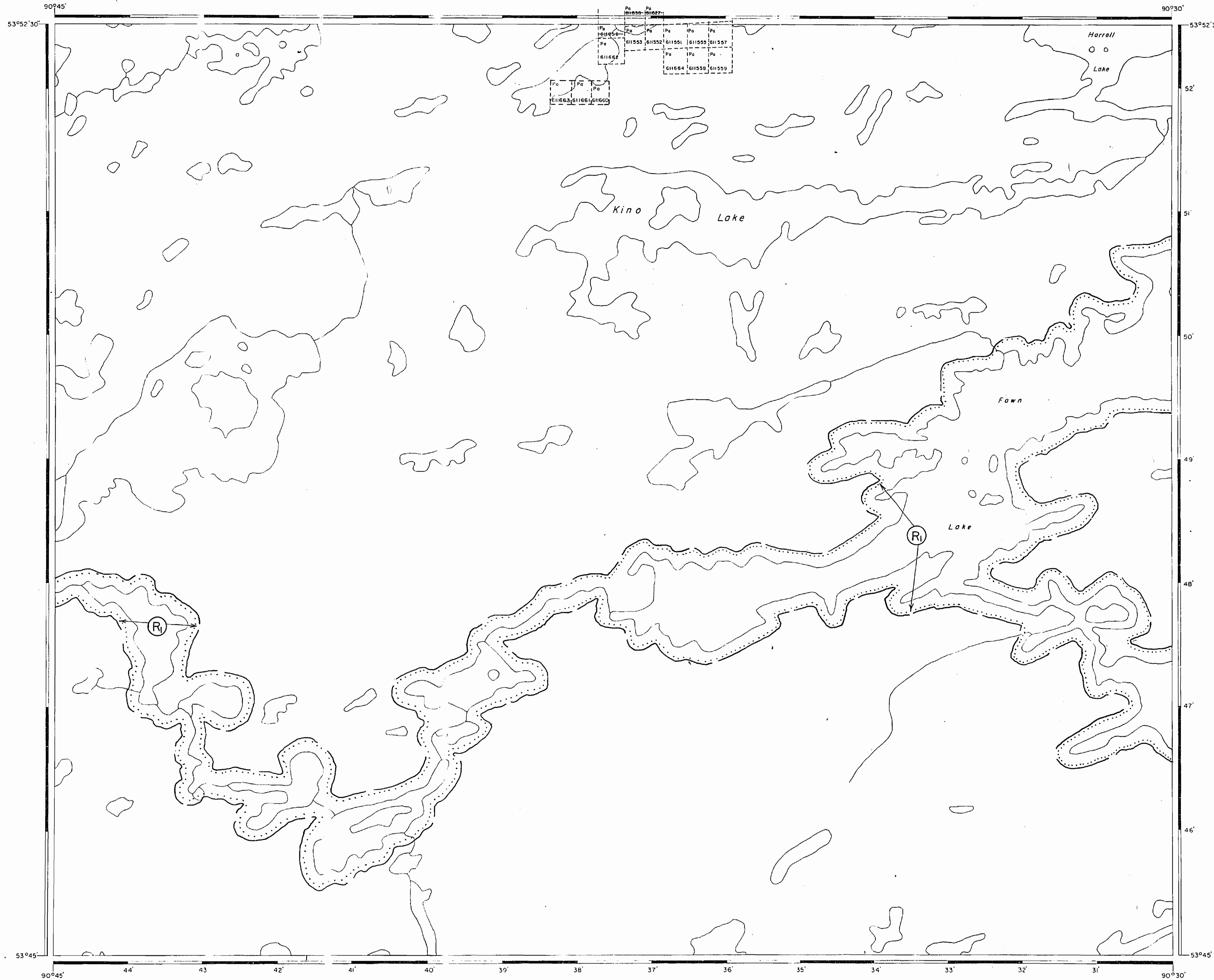
DATE OF ISSUE
 NOV 24 1976

9
 6-2091
 NATIONAL TOPOGRAPHIC SERIES 53 G

PLAN NO. **M.2754**

ONTARIO
 MINISTRY OF NATURAL RESOURCES
 SURVEYS AND MAPPING BRANCH

Tweddle Lake Area-M.2755



AREA OF

KINO LAKE

DISTRICT OF KENORA
PATRICIA PORTION

PATRICIA MINING DIVISION

SCALE: 1-INCH = 40 CHAINS

LEGEND

PATENTED LAND	Ⓟ
CROWN LAND SALE	C.S.
LEASES	Ⓞ
LOCATED LAND	Loc.
LICENSE OF OCCUPATION	L.O.
MINING RIGHTS ONLY	M.R.O.
SURFACE RIGHTS ONLY	S.R.O.
ROADS	— — — — —
IMPROVED ROADS	— — — — —
KING'S HIGHWAYS	— — — — —
RAILWAYS	— — — — —
POWER LINES	— — — — —
MARSH OR MUSKEG	⊗
MINES	X
CANCELLED	C.

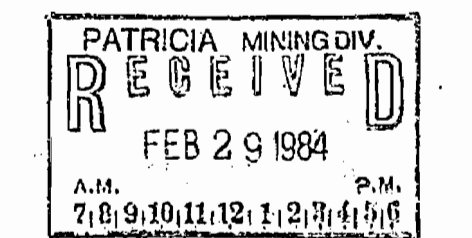
NOTES

400' Reserve around all Lakes & Rivers to Dept. of Lands & Forests.

NOT TO BE USED FOR SURVEY PURPOSES

AREAS WITHDRAWN FROM DISPOSITION

M.R.O. - MINING RIGHTS ONLY				
S.R.O. - SURFACE RIGHTS ONLY				
M.+S. - MINING AND SURFACE RIGHTS				
Description	Order No.	Date	Disposition	File
Ⓟ PARK RESERVE	W 40/83	8/23/83	M.B.S.	168538



G-2091

NATIONAL TOPOGRAPHIC SERIES 53 G

PLAN NO. M.2754

ONTARIO
MINISTRY OF NATURAL RESOURCES
SURVEYS AND MAPPING BRANCH



S. PT. SEVERN LAKE G-2221

S. OF NISEKEYASK LAKE G-2217

AREA NOT MAPPED

PATRICIA MANNING
 RECEIVED
 JULY 15 1984
 S.M. 2711
 10-10-11-12-1-3-7-4-5

LEGEND

HIGHWAY AND ROUTE No.	
OTHER ROADS	
TRAILS	
SURVEYED LINES:	
TOWNSHIPS, BASE LINES, ETC.	
LOTS, MINING CLAIMS, PARCELS, ETC.	
UNSURVEYED LINES:	
LOT LINES	
PARCEL BOUNDARY	
MINING CLAIMS ETC.	
RAILWAY AND RIGHT OF WAY	
UTILITY LINES	
NON-PERENNIAL STREAM	
FLOODING OR FLOODING RIGHTS	
SUBDIVISION OR COMPOSITE PLAN	
RESERVATIONS	
ORIGINAL SHORELINE	
MARSH OR MUSKEG	
MINES	
TRAVERSE MONUMENT	

DISPOSITION OF CROWN LANDS

TYPE OF DOCUMENT	SYMBOL
PATENT, SURFACE & MINING RIGHTS	
" SURFACE RIGHTS ONLY	
" MINING RIGHTS ONLY	
LEASE, SURFACE & MINING RIGHTS	
" SURFACE RIGHTS ONLY	
" MINING RIGHTS ONLY	
LICENCE OF OCCUPATION	
ORDER-IN-COUNCIL	
RESERVATION	
CANCELLED	
SAND & GRAVEL	

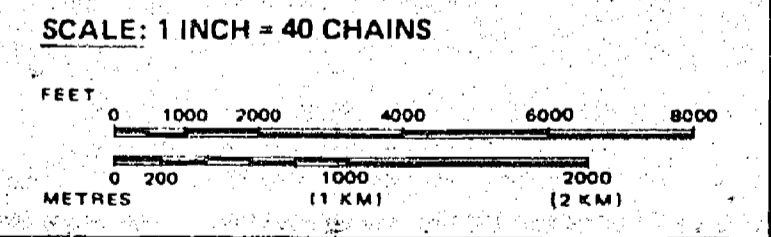
NOTE: MINING RIGHTS IN PARCELS PATENTED PRIOR TO MAY 6, 1913, VESTED IN ORIGINAL PATENTEE BY THE PUBLIC LANDS ACT, R.S.O. 1970, CHAP. 380, SEC. 63, SUBSEC. 1.

REFERENCES

AREAS WITHDRAWN FROM DISPOSITION

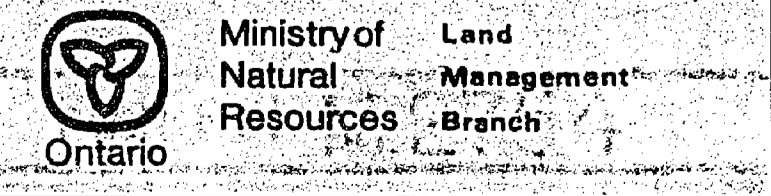
M.R.O. - MINING RIGHTS ONLY
 S.R.O. - SURFACE RIGHTS ONLY
 M.+S. - MINING AND SURFACE RIGHTS

Description	Order No.	Date	Disposition	File
PARK RESERVE	40/85	8/25/85	M & S	188538



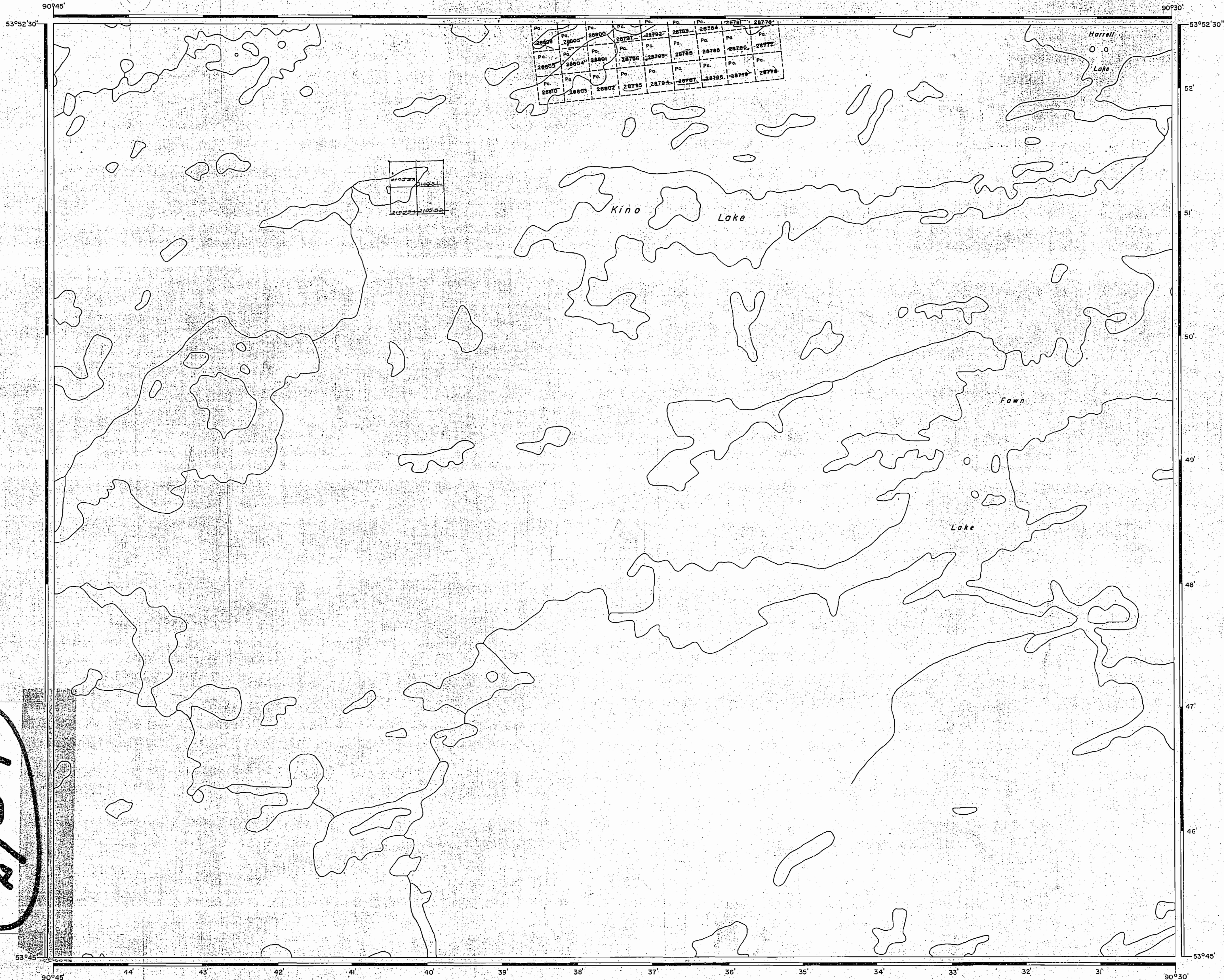
THE INFORMATION THAT APPEARS ON THIS MAP HAS BEEN COMPILED FROM VARIOUS SOURCES, AND ACCURACY IS NOT GUARANTEED. THOSE WISHING TO STAKE MINING CLAIMS SHOULD CONSULT WITH THE MINING RECORDER, MINISTRY OF NORTHERN DEVELOPMENT AND MINES, FOR ADDITIONAL INFORMATION ON THE STATUS OF THE LANDS SHOWN HEREON.

AREA
KINO LAKE
 M.N.R. ADMINISTRATIVE DISTRICT
SIOUX LOOKOUT
 MINING DIVISION
PATRICIA
 LAND TITLES / REGISTRY DIVISION
KENORA (PATRICIA PORTION)



Date JANUARY 1984 Number
G-2091

Tweddle Lake Area-M.2755



AREA OF

KINO LAKE

DISTRICT OF KENORA
PATRICIA PORTION

PATRICIA MINING DIVISION

SCALE: 1-INCH = 40 CHAINS

LEGEND

PATENTED LAND	Ⓟ
CROWN LAND SALE	C.S.
LEASES	Ⓛ
LOCATED LAND	Loc.
LICENSE OF OCCUPATION	L.O.
MINING RIGHTS ONLY	M.R.O.
SURFACE RIGHTS ONLY	S.R.O.
ROADS	—
IMPROVED ROADS	—
KING'S HIGHWAYS	—
RAILWAYS	—
POWER LINES	—
MARSH OR MUSKEG	—
MINES	ⓧ
CANCELLED	C.

NOTES

400' Reserve around all Lakes & Rivers
to Dept. of Lands & Forests.

NOT TO BE USED FOR SURVEY PURPOSES

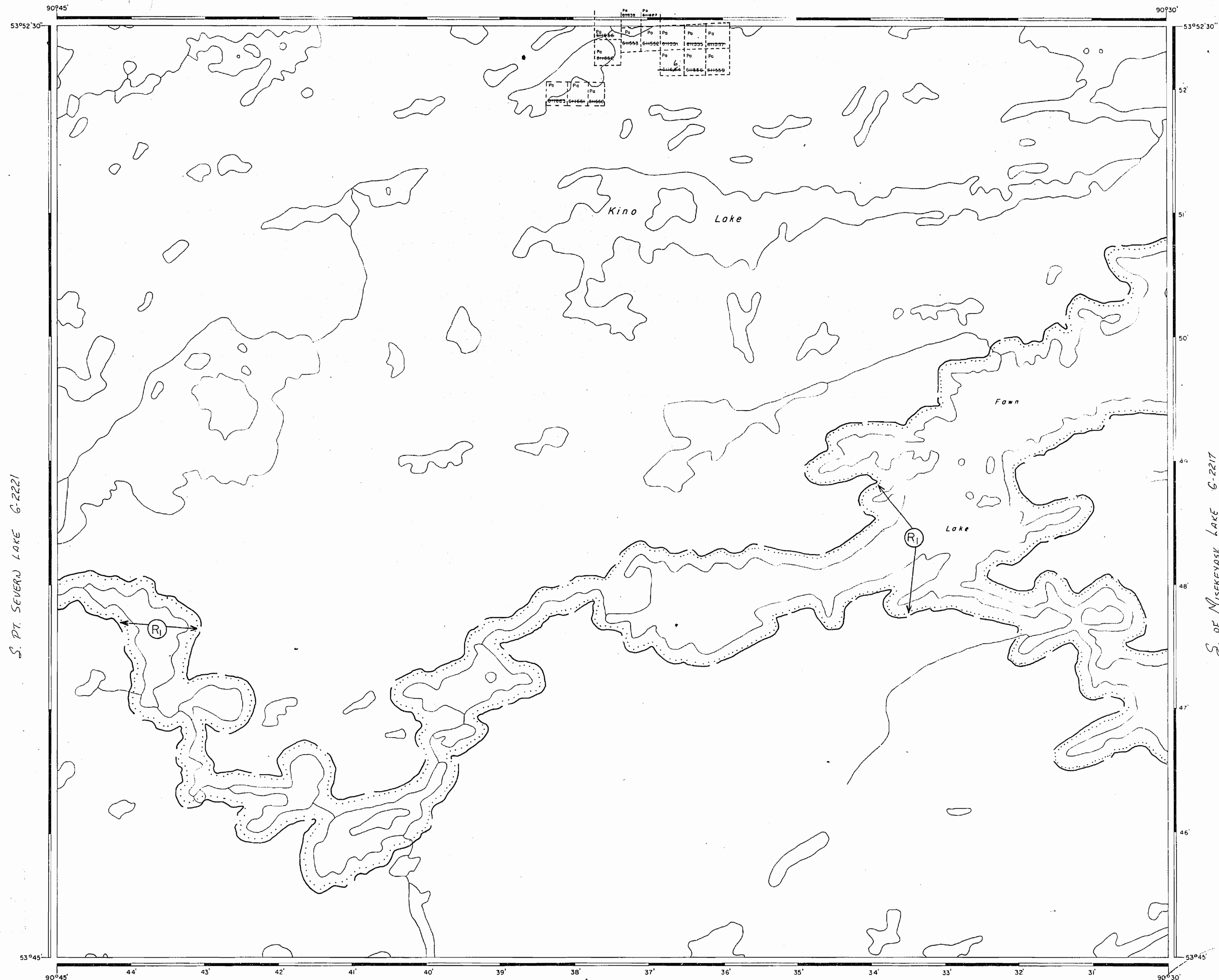
#1

G-2091

PLAN NO. M.2754

DEPARTMENT OF MINES
— ONTARIO —

TWEDDLE LAKE AREA G-2238



S. PT. SEVERN LAKE G-2221

S. OF MISEKEYASK LAKE G-2217

AREA NOT MAPPED

LEGEND

- HIGHWAY AND ROUTE No.
- OTHER ROADS
- TRAILS
- SURVEYED LINES:
 - TOWNSHIPS, BASE LINES, ETC.
 - LOTS, MINING CLAIMS, PARCELS, ETC.
- UNSURVEYED LINES:
 - LOT LINES
 - PARCEL BOUNDARY
 - MINING CLAIMS ETC.
- RAILWAY AND RIGHT OF WAY
- UTILITY LINES
- NON-PERENNIAL STREAM
- FLOODING OR FLOODING RIGHTS
- SUBDIVISION OR COMPOSITE PLAN RESERVATIONS
- ORIGINAL SHORELINE
- MARSH OR MUSKEG
- MINES
- TRAVERSE MONUMENT

DISPOSITION OF CROWN LANDS

TYPE OF DOCUMENT	SYMBOL
PATENT, SURFACE & MINING RIGHTS	●
" SURFACE RIGHTS ONLY	○
" MINING RIGHTS ONLY	○
LEASE, SURFACE & MINING RIGHTS	■
" SURFACE RIGHTS ONLY	■
" MINING RIGHTS ONLY	■
LICENCE OF OCCUPATION	○
ORDER-IN-COUNCIL	OC
RESERVATION	○
CANCELLED	○
SAND & GRAVEL	○

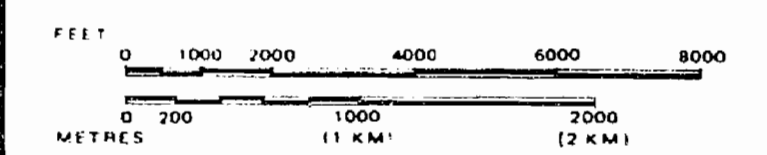
NOTE: MINING RIGHTS IN PARCELS PATENTED PRIOR TO MAY 6, 1913, VESTED IN ORIGINAL PATENTEE BY THE PUBLIC LANDS ACT, R.S.O. 1970, CHAP. 380, SEC. 63, SUBSEC. 1.

REFERENCES

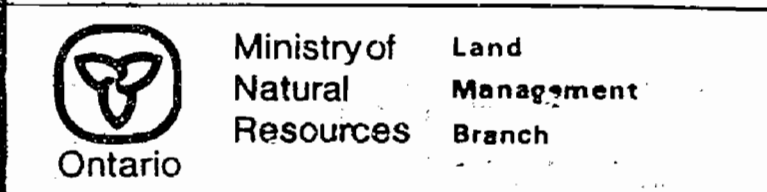
AREAS WITHDRAWN FROM DISPOSITION

Description	Order No.	Date	Disposition	File
Ⓜ PARK RESERVE	W 40/781	07/25/53	M.R.S.	188858
Dtd 2/1/81				

SCALE: 1 INCH = 40 CHAINS



AREA
KINO LAKE
 M.N.R. ADMINISTRATIVE DISTRICT
SIoux LOOKOUT
 MINING DIVISION
PATRICIA
 LAND TITLES / REGISTRY DIVISION
KENORA (PATRICIA PORTION)



Date JANUARY, 1984 Number **G-2091**