

Moody Twp.

THE TOWNSHIP OF

KNOX

DISTRICT OF COCHRANE

LARDER LAKE MINING DIVISION

SCALE: 1-INCH=40 CHAINS

LEGEND

- | | |
|-----------------------|--------|
| PATENTED LAND | (P) |
| CROWN LAND SALE | (C.S.) |
| LEASES | (L) |
| LOCATED LAND | (Loc.) |
| LICENSE OF OCCUPATION | (L.O.) |
| ROADS | — |
| IMPROVED ROADS | — |
| RAILWAYS | — |
| POWER LINES | — |
| MARSH OR MUSKEG | — |
| TRAILS | — |

NOTES

400' Surface Rights Reservation around all Lakes and Rivers.

Flooding rights along shores of Abitibi River.

License of Occupation 8674 covers land below 826' & 881' level along the shores of the Abitibi River.

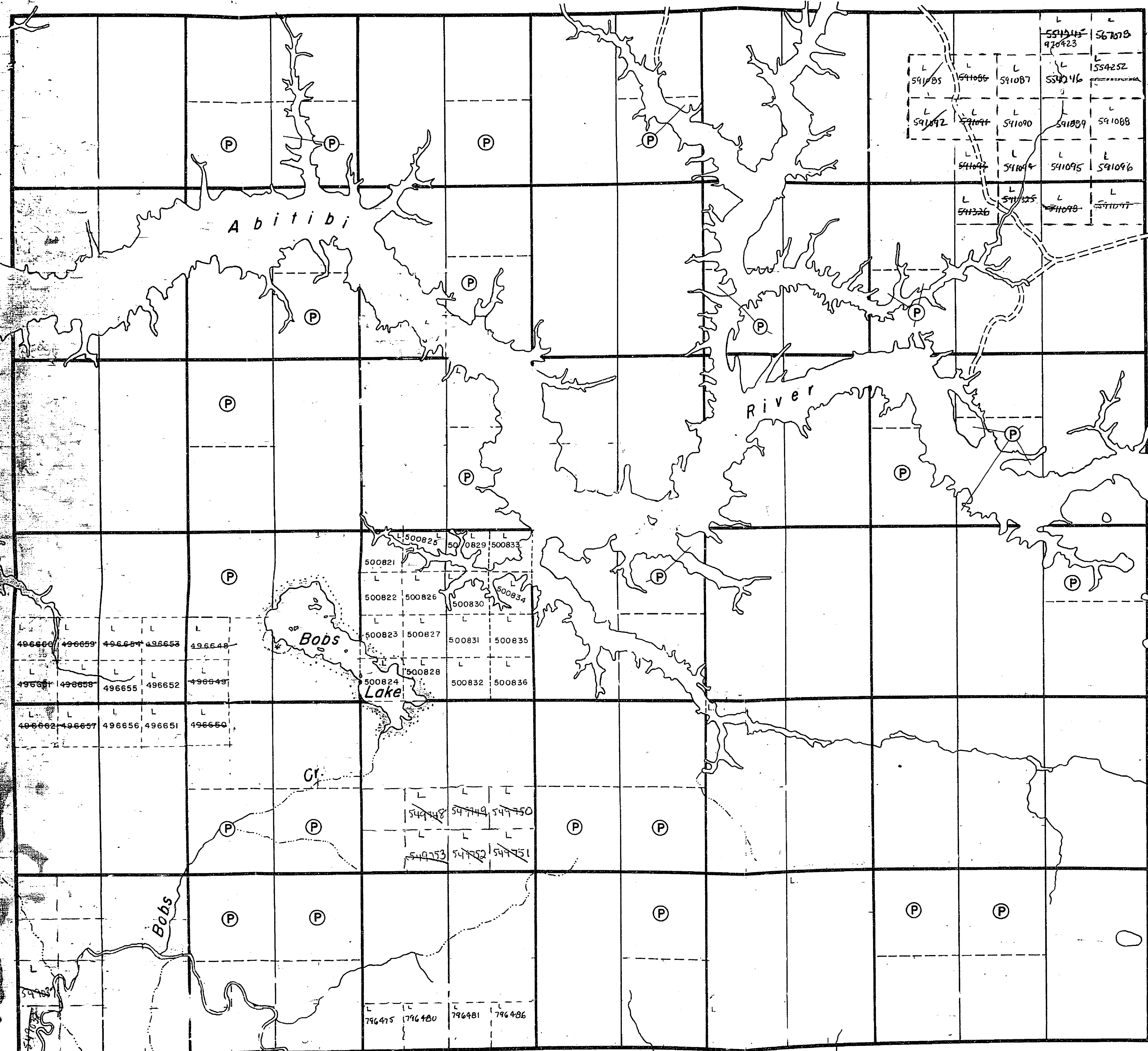
PLAN NO. — M. 525

ONTARIO
MINISTRY OF NATURAL RESOURCES
SURVEYS AND MAPPING BRANCH

Rickard Twp.

Kerrs Twp.

Coulson Twp.



VI

V

IV

III

II

I

13 12 11 10 9 8 7 6 5 4 3 2 1

Moody Twp.

THE TOWNSHIP OF

KNOX

DISTRICT OF COCHRANE

LARDER LAKE MINING DIVISION

SCALE: 1-INCH = 40 CHAINS

LEGEND.

- PATENTED LAND (P)
- CROWN LAND SALE (C.S.)
- LEASES (L)
- LOCATED LAND (Loc.)
- LICENSE OF OCCUPATION (L.O.)
- ROADS (—)
- IMPROVED ROADS (—)
- RAILWAYS (—)
- POWER LINES (—)
- MARSH OR MUSKEG (—)
- TRAILS (—)

NOTES

400' Surface Rights Reservation around all Lakes and Rivers.

Flooding rights along shores of Abitibi River.

License of Occupation 8674 covers land below 826' & 881' level along the shores of the Abitibi River.



See also notes relative to this reopened 01/31/87 apr. 0/87

NOTICE OF FORESTRY ACTIVITY

THIS TOWNSHIP / AREA FALLS WITHIN THE IROQUOIS FALLS MANAGEMENT UNIT

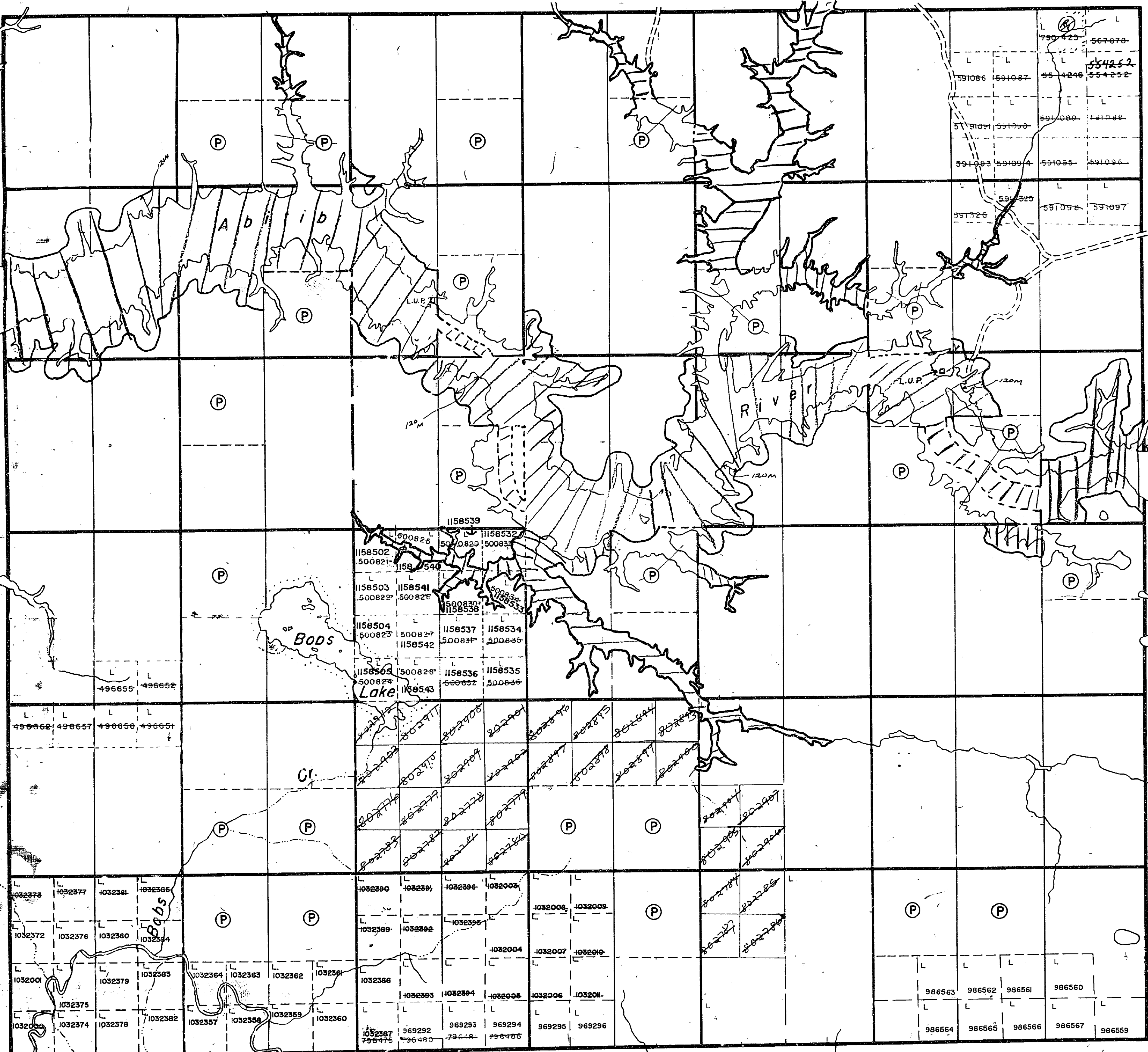
AND MAY BE SUBJECT TO FORESTRY OPERATIONS. THE MNR UNIT FORESTER FOR THIS AREA CAN BE CONTACTED AT: P.O. BOX 730 2 THIRD AVE. COCHRANE, ONT. P.O. BOX 730 705-272-4365

PLAN NO. - M. 525 #9

ONTARIO MINISTRY OF NATURAL RESOURCE SURVEYS AND MAPPING BRANCH

Rickard Twp.

Kerrs Twp.



13 12 11 10 9 8 7 6 5 4 3 2 1

Coulson Twp.

THE INFORMATION THAT APPEARS ON THIS MAP HAS BEEN COMPILED FROM VARIOUS SOURCES. THE ACCURACY IS NOT GUARANTEED. THOSE WISHING TO STAKE MINING CLAIMS SHOULD CONSULT WITH THE MINING RECORDER, MINISTRY OF NORTHERN DEVELOPMENT AND MINES, FOR ADDITIONAL INFORMATION ON THE STATUS OF THE LANDS SHOWN HEREON.

REMOVED FROM CIRCULATION AND ARCHIVED ON MAR.17/92

Moody Twp.

THE TOWNSHIP OF

KNOX

DISTRICT OF COCHRANE

LARDER LAKE MINING DIVISION

SCALE: 1-INCH=40 CHAINS

LEGEND

- PATENTED LAND (P)
- CROWN LAND SALE (C.S.)
- LEASES (L)
- LOCATED LAND (Loc.)
- LICENSE OF OCCUPATION (L.O.)
- ROADS
- IMPROVED ROADS
- RAILWAYS
- POWER LINES
- MARSH OR MUSKEG
- TRAILS

NOTES

400' Surface Rights Reservation around all Lakes and Rivers.

Flooding rights along shores of Abitibi River.

License of Occupation 8674 covers land below 826' & 881' level along the shores of the Abitibi River.



Sec 36/38 20/18/20 20/18/20 20/18/20 reopened 0/33/87 apr. 6/87

NOTICE OF FORESTRY ACTIVITY

THIS TOWNSHIP / AREA FALLS WITHIN THE IROQUOIS FALLS MANAGEMENT UNIT

AND MAY BE SUBJECT TO FORESTRY OPERATIONS. THE MNR UNIT FORESTER FOR THIS AREA CAN BE CONTACTED AT: P.O. BOX 730

2 THIRD AVE. COCHRANE, ONT. POL 1C0 705-272-4365

PLAN NO. - M. 525 #9

ONTARIO

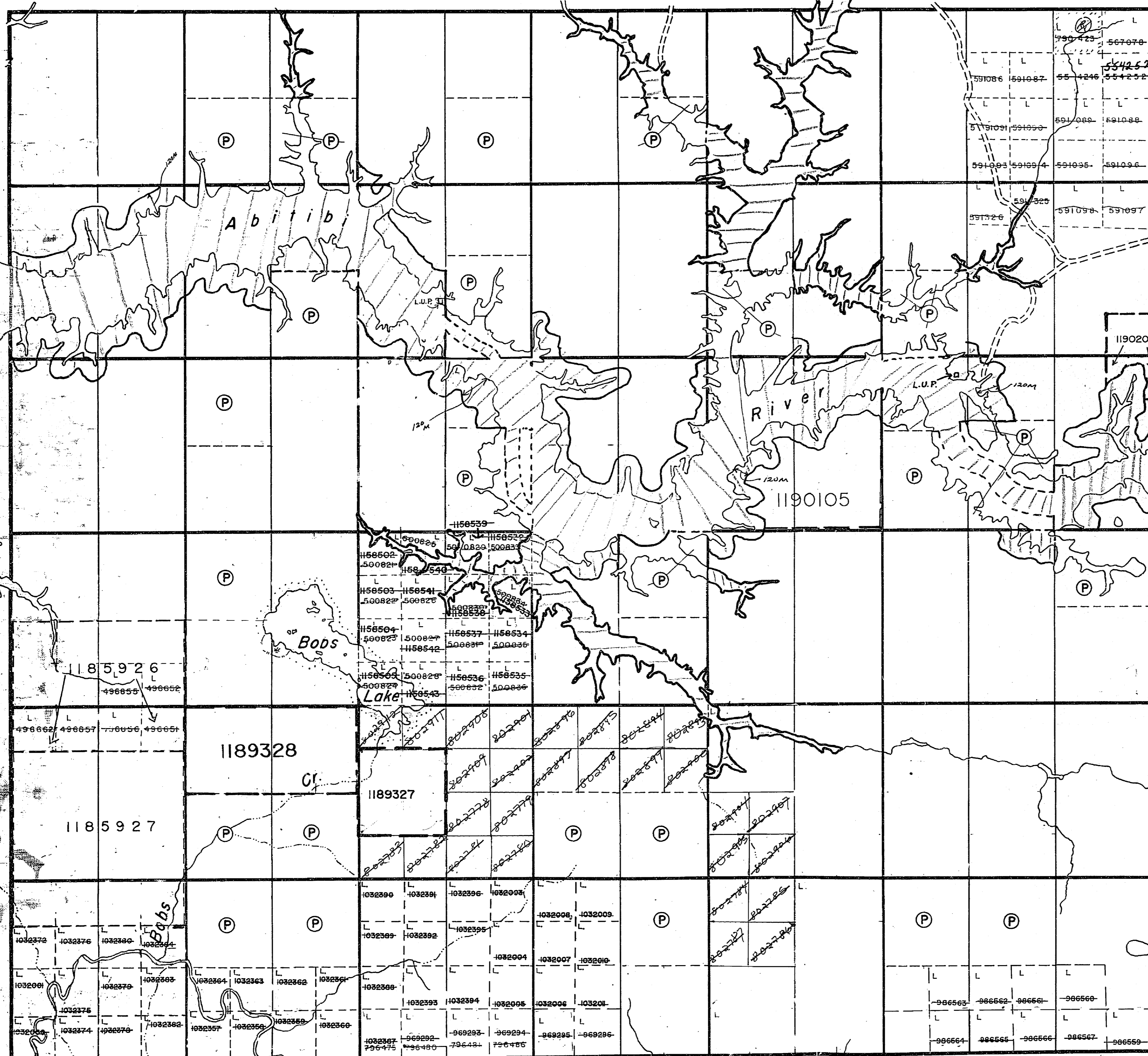
MINISTRY OF NATURAL RESOURCE

SURVEYS AND MAPPING BRANCH

Rickard Twp.

Kerrs Twp.

Coulson Twp.



VI
V
IV
III
II
I

13 12 11 10 9 8 7 6 5 4 3 2 1

THE INFORMATION THAT APPEARS ON THIS MAP HAS BEEN COMPILED FROM VARIOUS SOURCES, AND ACCURACY IS NOT GUARANTEED. THOSE WISHING TO STAKE MINING CLAIMS SHOULD CONSULT WITH THE MINING RECORDER, MINISTRY OF NORTHERN DEVELOPMENT AND MINES, FOR ADDITIONAL INFORMATION ON THE STATUS OF THE LANDS SHOWN HEREON.

COPY OF THIS MYLAR ARCHIVED MAR.17/92

REMOVED FROM CIRCULATION DEC. 21, 1993

J.G.

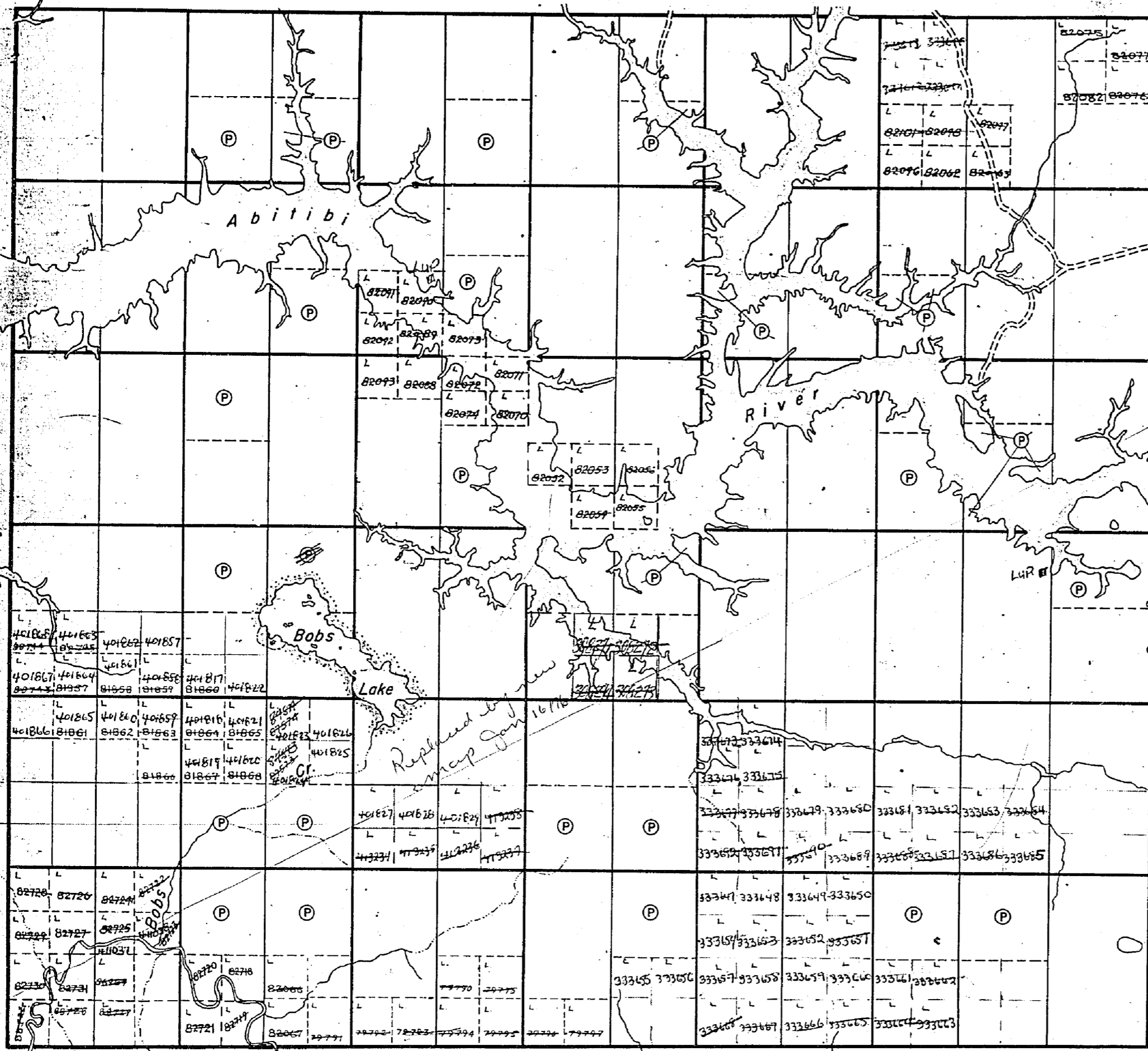
Moody Twp.

VI
V
IV
III
II
I

Rickard Twp.

Kerrs Twp.

Coulson Twp.



THE TOWNSHIP
OF
KNOX
DISTRICT OF
COCHRANE

LARDER LAKE
MINING DIVISION

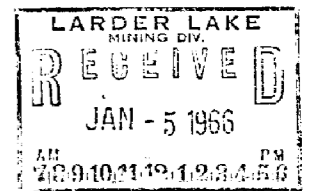
SCALE: 1-INCH= 40 CHAINS

LEGEND

- PATENTED LAND (P)
- CROWN LAND SALE (C.S.)
- LEASES (L)
- LOCATED LAND (Loc.)
- LICENSE OF OCCUPATION (L.O.)
- ROADS
- IMPROVED ROADS
- RAILWAYS
- POWER LINES
- MARSH OR MUSKEG
- TRAILS

NOTES

- 400' Surface Rights Reservation around all Lakes and Rivers.
- Flooding rights along shores of Abitibi River.
- License of Occupation No. 937 to cover all unpatented land along the shores of the Abitibi River.

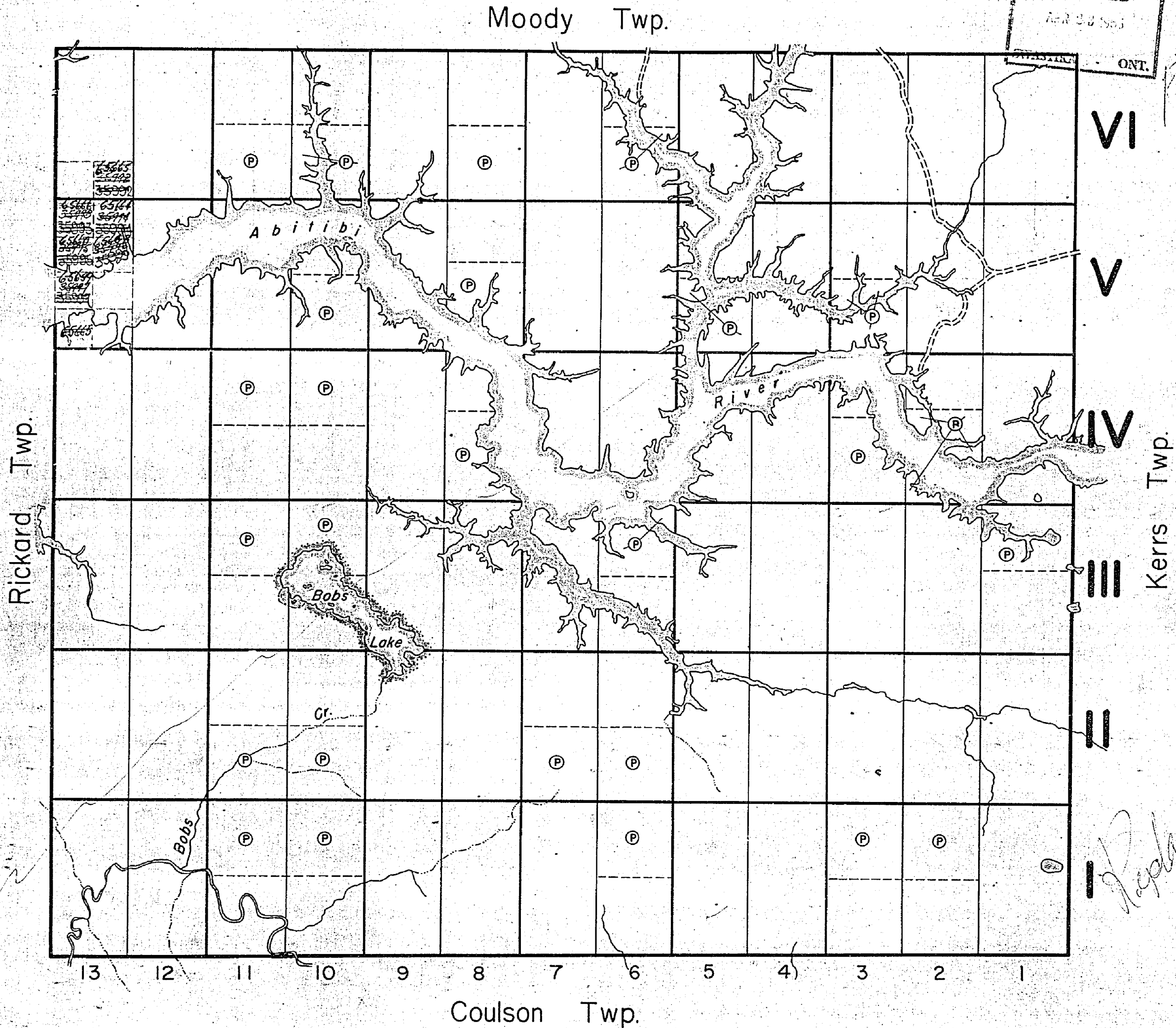


#9

PLAN NO. - M. 525

DEPARTMENT OF MINES
— ONTARIO —

RECEIVED
APR 30 1960
ONT.



THE TOWNSHIP
OF
KNOX
DISTRICT OF
COCHRANE
LARDER LAKE
MINING DIVISION
SCALE: 1-INCH=40 CHAINS

LEGEND

PATENTED LAND	(P)
CROWN LAND SALE	C.S.
LEASES	(L)
LOCATED LAND	Loc.
LICENSE OF OCCUPATION	L.O.
ROADS	—
IMPROVED ROADS	—
RAILWAYS	—
POWER LINES	—
MARSH OR MUSKEG	—
TRAILS	—

NOTES

400' Reserve to Dept. of Lands & Forests shown thus: —

Flooding rights along shores of Abitibi River.

License of Occupation No. 937 to cover all unpatented land along the shores of the Abitibi River.

*Replaced
April 11/1960*

PLAN NO. —/M. 525
DEPARTMENT OF MINES
— ONTARIO —

Moody Twp.

THE TOWNSHIP OF
OF

KNOX

DISTRICT OF
COCHRANE

LARDER LAKE
MINING DIVISION

SCALE: 1-INCH=40 CHAINS

LEGEND

- PATENTED LAND (P)
- CROWN LAND SALE (C.S.)
- LEASES (L)
- LOCATED LAND (Loc.)
- LICENSE OF OCCUPATION (L.O.)
- ROADS (---)
- IMPROVED ROADS (— — — — —)
- RAILWAYS (—+—+—+—+—)
- POWER LINES (—o—o—o—o—)
- MARSH OR MUSKEG (---)
- TRAILS (---)

NOTES

400' Reserve to Dept. of Lands & Forests shown thus: ---

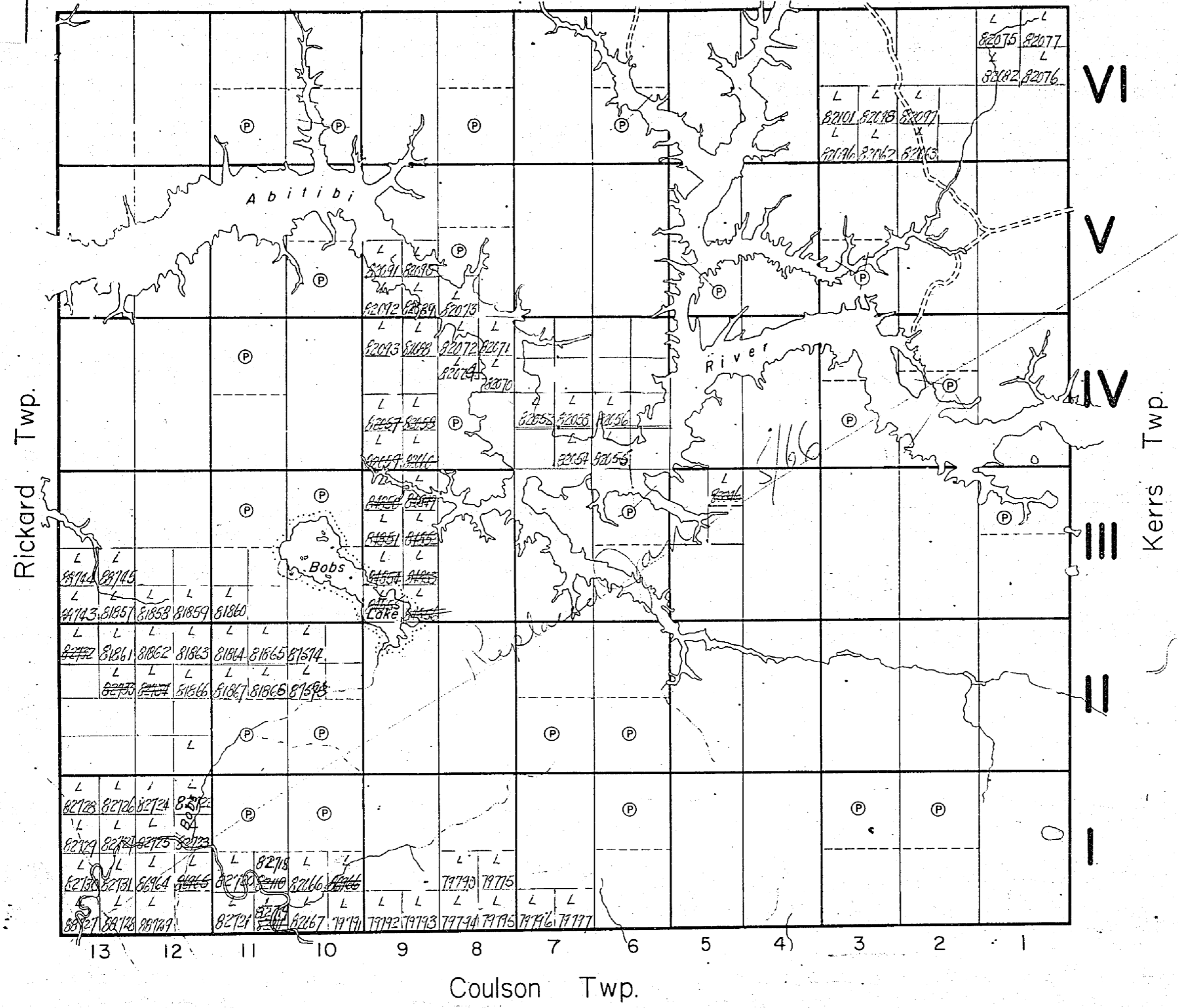
Flooding rights along shores of Abitibi River.

License of Occupation No. 937 to cover all unpatented land along the shores of the Abitibi River.

MINING RECORDER
RECEIVED
APR 11 1960
KIRKLAND LAKE - ONT.

PLAN NO. - M. 525

DEPARTMENT OF MINES
— ONTARIO —

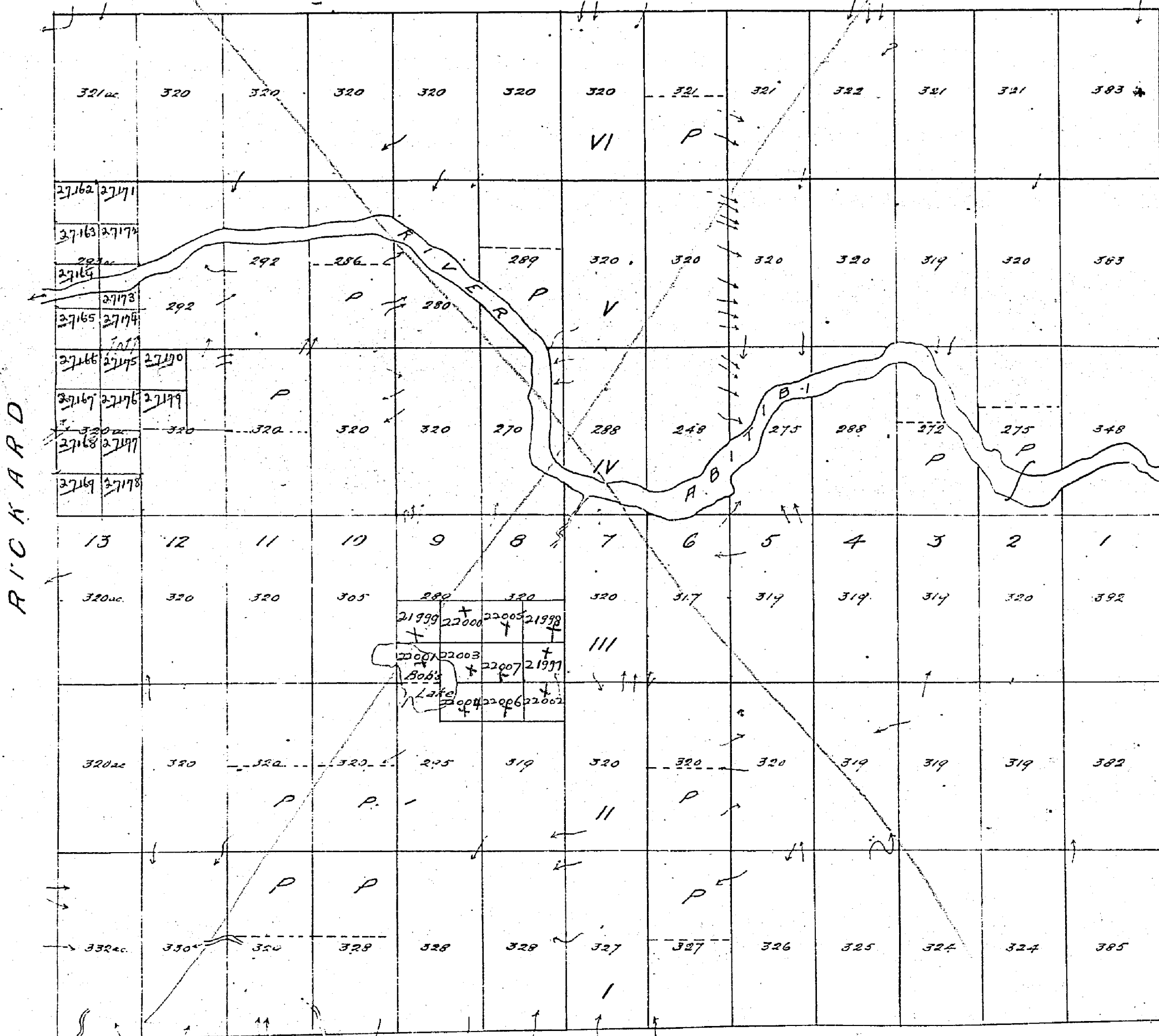


KNOX

District of Nipissing
 now Timiskaming
 Scale 40 chains to 1 inch

M-525

MOODY

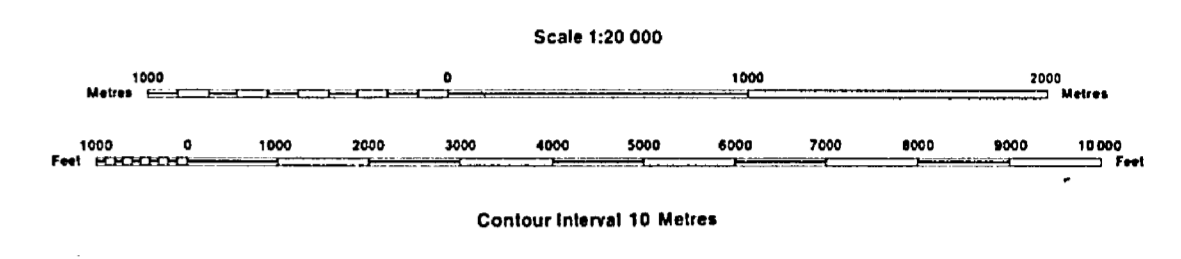


COULSON

INDEX TO LAND DISPOSITION

PLAN
G-3527
 TOWNSHIP
KNOX

M.N.R. ADMINISTRATIVE DISTRICT
KIRKLAND LAKE/COCHRANE
 MINING DIVISION
LARDER LAKE
 LAND TITLES/REGISTRY DIVISION
COCHRANE



AREAS WITHDRAWN FROM DISPOSITION

MRO - Mining Rights Only
 SRO - Surface Rights Only
 M+S - Mining and Surface Rights

Description	Order No.	Date	Disposition	File

SYMBOLS

- Boundary
 - Township, Meridian, Baseline
 - Road allowance; surveyed
 - shoreline
 - Lot/Concession; surveyed
 - unsurveyed
 - Parcel; surveyed
 - unsurveyed
 - Right-of-way; road
 - railway
 - utility
 - Reservation
 - Cliff, Pit, Pile
 - Contour
 - Interpolated
 - Approximate
 - Depression
 - Control point (horizontal)
 - Flooded land
 - Mine head frame
 - Pipeline (above ground)
 - Railway; single track
 - double track
 - abandoned
 - Road; highway, county, township
 - access
 - trail, bush
 - Shoreline (original)
 - Transmission line
 - Wooded area

DISPOSITION OF CROWN LANDS

- Patent
 - Surface & Mining Rights
 - Surface Rights Only
 - Mining Rights Only
- Lease
 - Surface & Mining Rights
 - Surface Rights Only
 - Mining Rights Only
- Licence of Occupation
- Order-in-Council
- Cancelled
- Reservation
- Sand & Gravel

CIRCULATED
 DEC. 21/1993.
 ARCHIVED JULY 8/97

Map base and land disposition drafting by Surveys and Mapping Branch, Ministry of Natural Resources. The disposition of land, location of lot fabric and parcel boundaries on this index was compiled for administrative purposes only.

