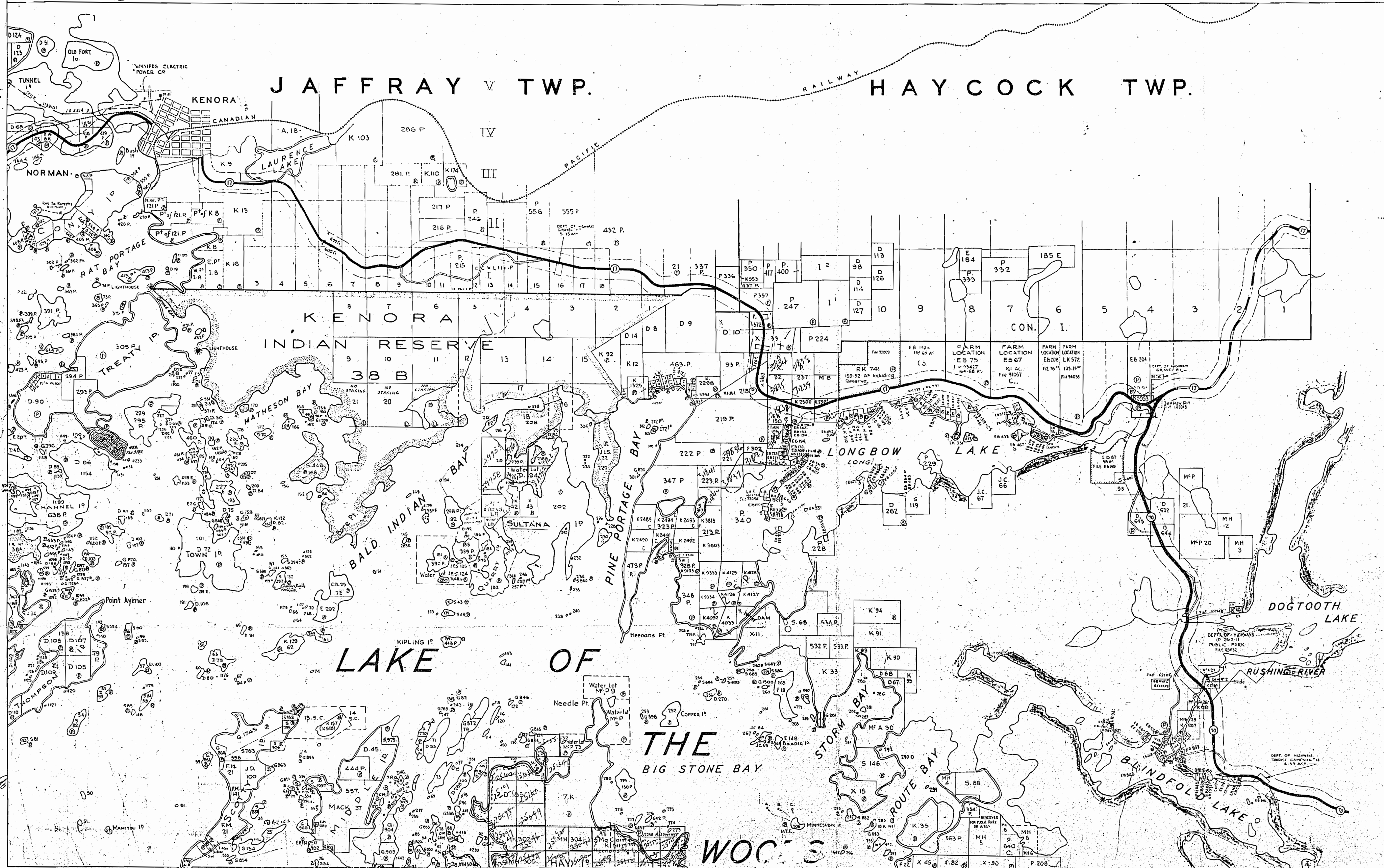


1996

1996

REFERENCE



FLOODING

In the disposition of Crown Lands, Reserve Flooding Rights, without compensation up to / Easement Contours 1051-20 and 1053-86 Geometric Survey of CANADA, DATUM, 1923 Adjustment. For detail of Contour, Refer to portfolio plans filed in PATENTS BRANCH AND SURVEYS Division, SEE FILE 4922. Contour 1051-20 is from the head of Dalles Rapids to controls Old Fort Island. Contour 1053-86 is from the Head of Controls Old Fort Island including DARLINGTON Bay and TRIBUTARIES Jan. 1940.

ROADS

Highway No 70, Dept. of Highways Plan P-2512 and P-2325-3. Highway No 17, Dept. of Highways Plans. P-2512-2, P-2325-10, P-2325-9 and P-2262-1. Old Highway, surveyed under instruction from Dept. of Lands and Forests, by O.L.S. Kirkup 1924. 600 feet on each side of certain high-ways has been reserved from disposition by Order in Council Dated Nov. 9th 1939 File 93427 & 123032. 100 feet on each side of the centre line of the Highway is vested in the Department of Highways, by Orders in Council, Dated Nov. 9th and Dec. 6th 1939. File 121757.

PARKS

Rushing River Park Reserve from Highways plan P 2512-1. File 123032.

TRANSMISSION LINES

Winnipeg Electric Power Transmission Line 1100' Wide. L.O. 4581 & 4414. File 113910.

LEGEND

- Railway
- Paved Highway
- Gravel Highway
- Other Motor Roads
- Wagon Road
- Trail or Path
- Highway Route Number
- Telephone or Telegraph Line
- Electric Power Line
- Lighthouse
- Dgm.
- 20' HIGHER SURFACE ETS. RES. P. R. RES. P. R. RES. P. R.

DISPOSITION OF CROWN LANDS

- PATENTED
- LEASE
- LICENSE OF OCCUPATION
- SALES

AREA PLAN #1

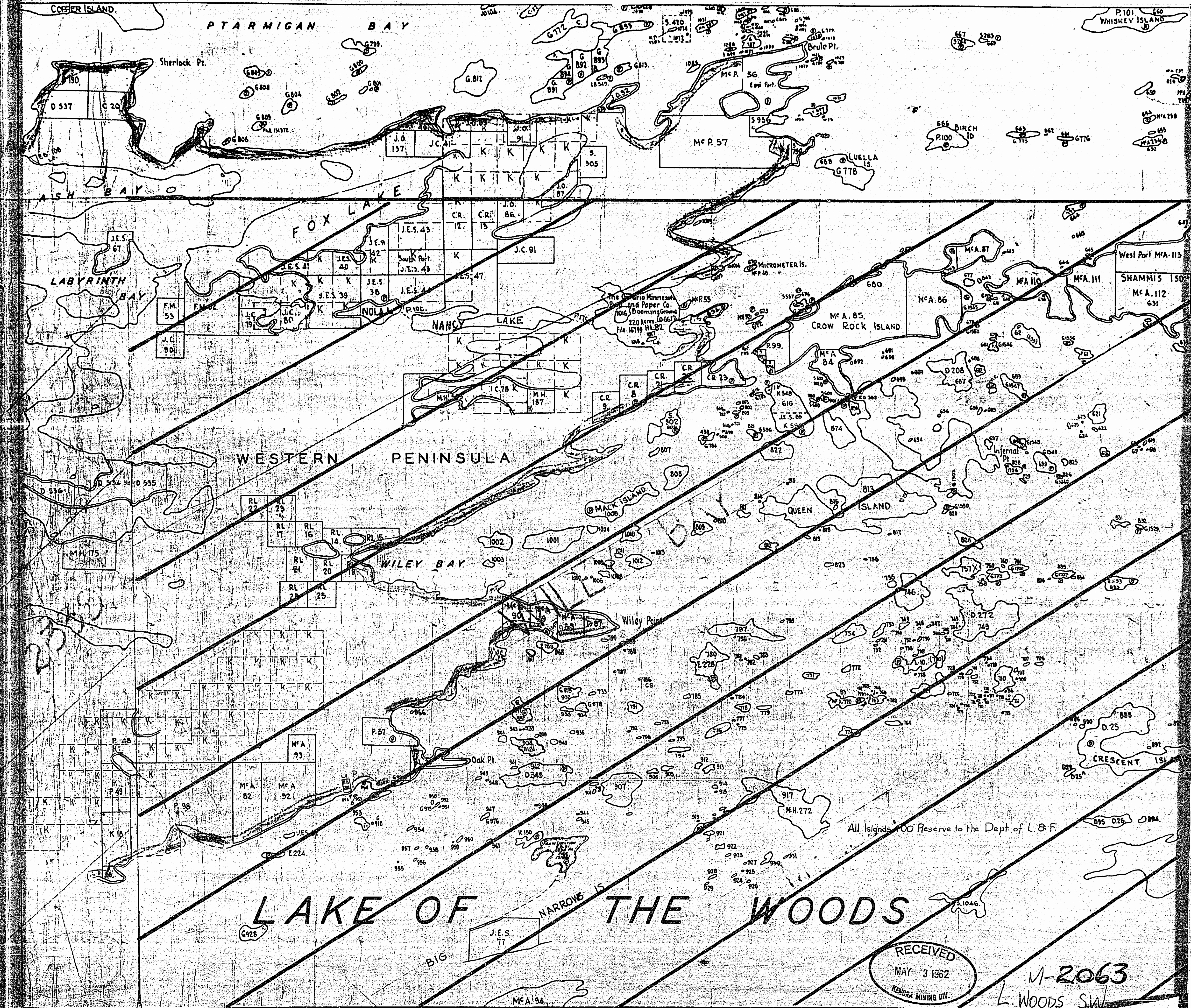
DISTRICT OF KENORA

| | | | |
|----------|----------|---------|-----------|
| TRACED | E. J. D. | CHECKED | E. J. D. |
| APPROVED | | SCALE | 1/4" = 1' |

TORONTO ONTARIO CANADA

Islands in Lake of the Woods withdrawn from staking under Sect. 39 Sub. NE BIGSTONE File: 67051.

1996



All Islands are Reserve to the Dept. of L. S. F.

RECEIVED
MAY 3 1962
KEMORA MINING DIV.

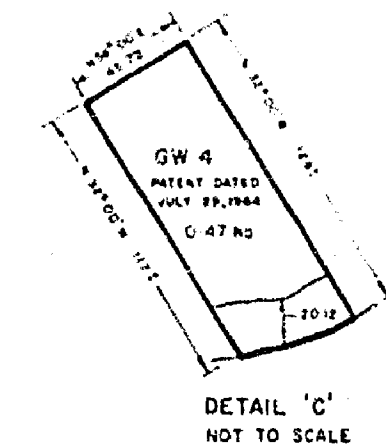
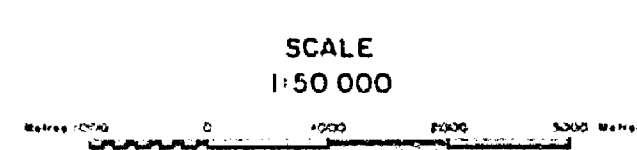
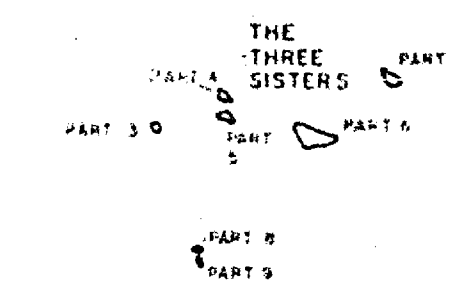
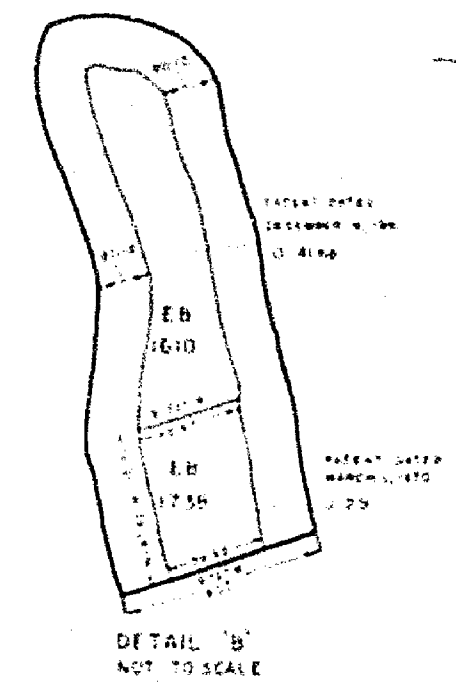
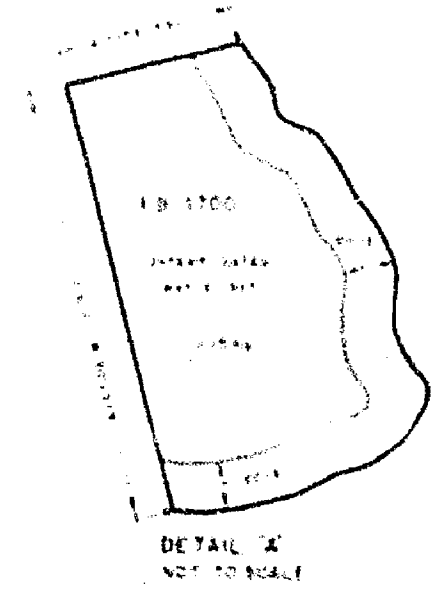
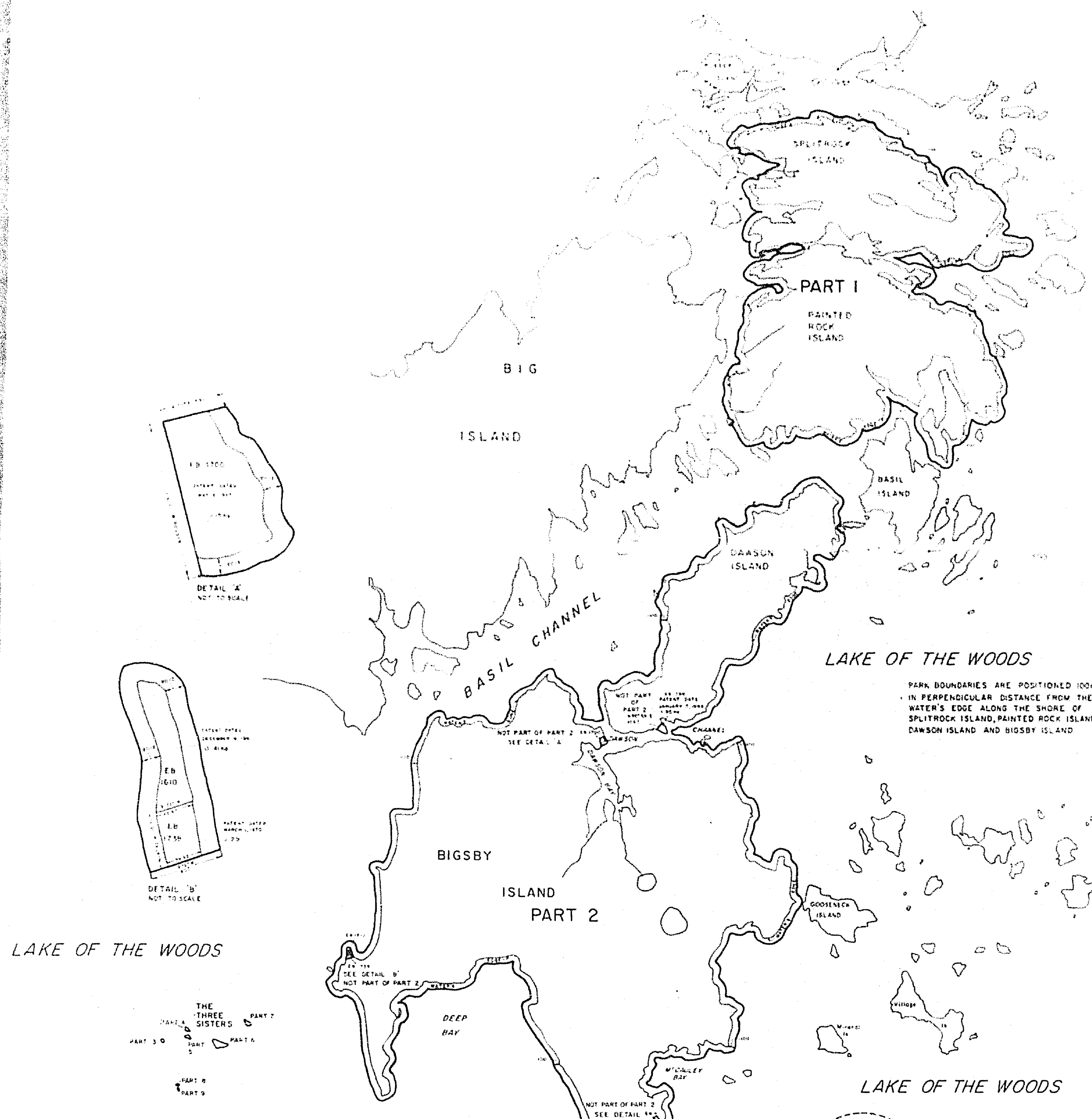
M-2063
L. WOODS SIA

Islands in Lake of the Woods withdrawn from staking under Sect. 39 Sub. C File 67051.

PLAN OF
LAKE OF THE WOODS
PROVINCIAL PARK
IN THE
TOWNSHIP OF M^cCROSSON
NOW IN THE TOWNSHIP OF M^cCROSSON AND TOVELL
DISTRICT OF RAINY RIVER
AND IN THE DISTRICT OF KENORA

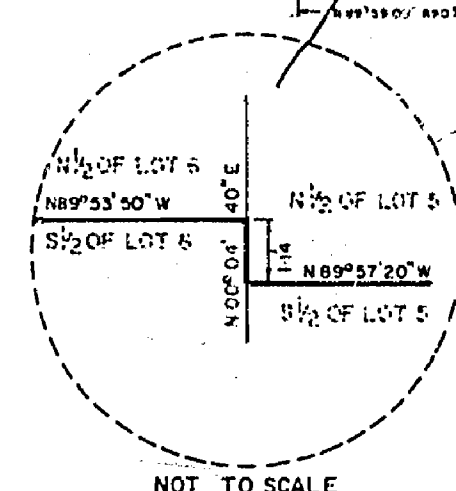
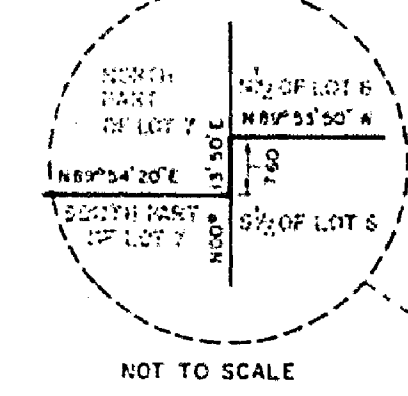
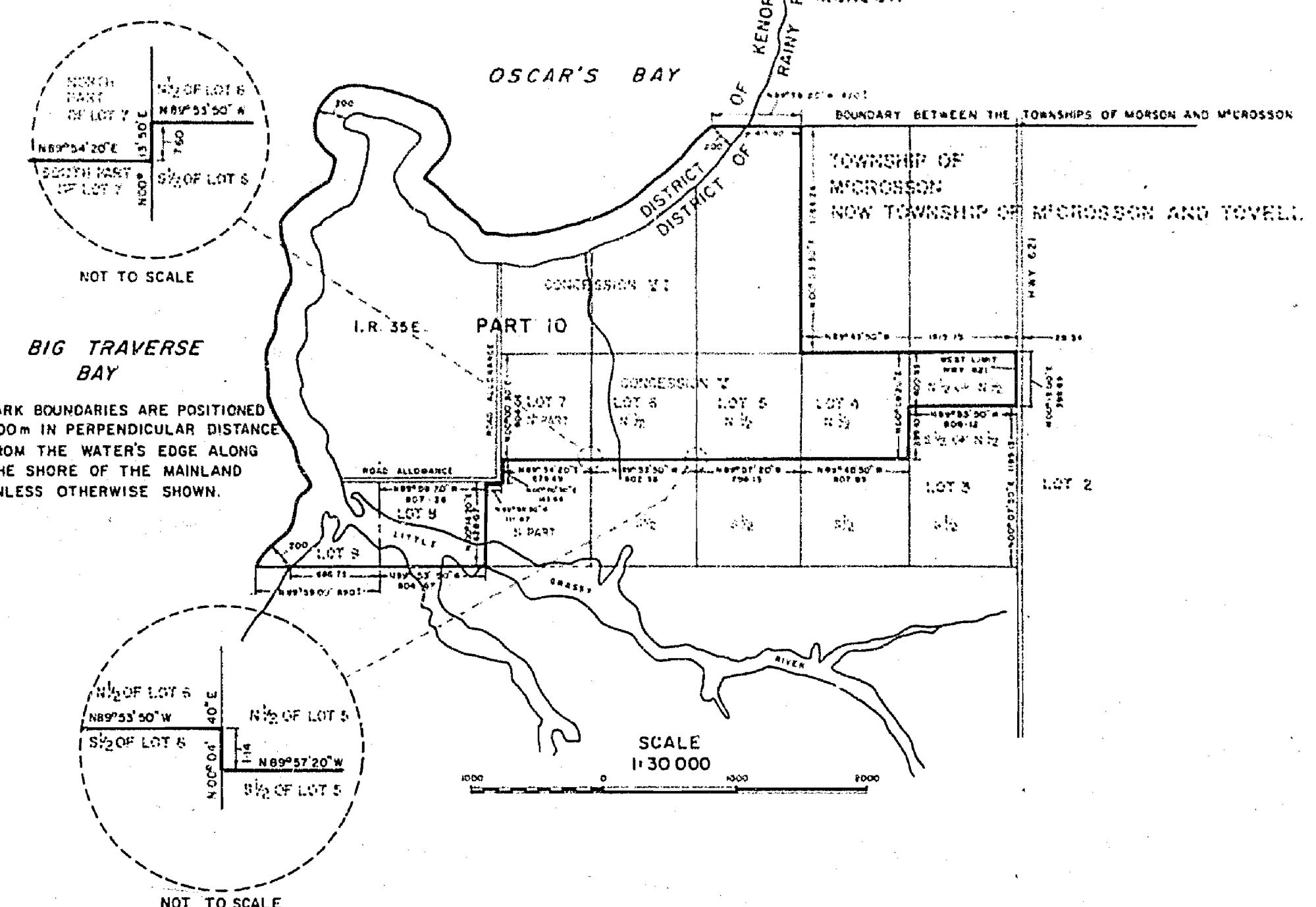
PARK BOUNDARIES ARE POSITIONED 100m
IN PERPENDICULAR DISTANCE FROM THE
WATER'S EDGE ALONG THE SHORE OF
SPLITROCK ISLAND, PAINTED ROCK ISLAND,
DAWSON ISLAND AND BIGSBY ISLAND

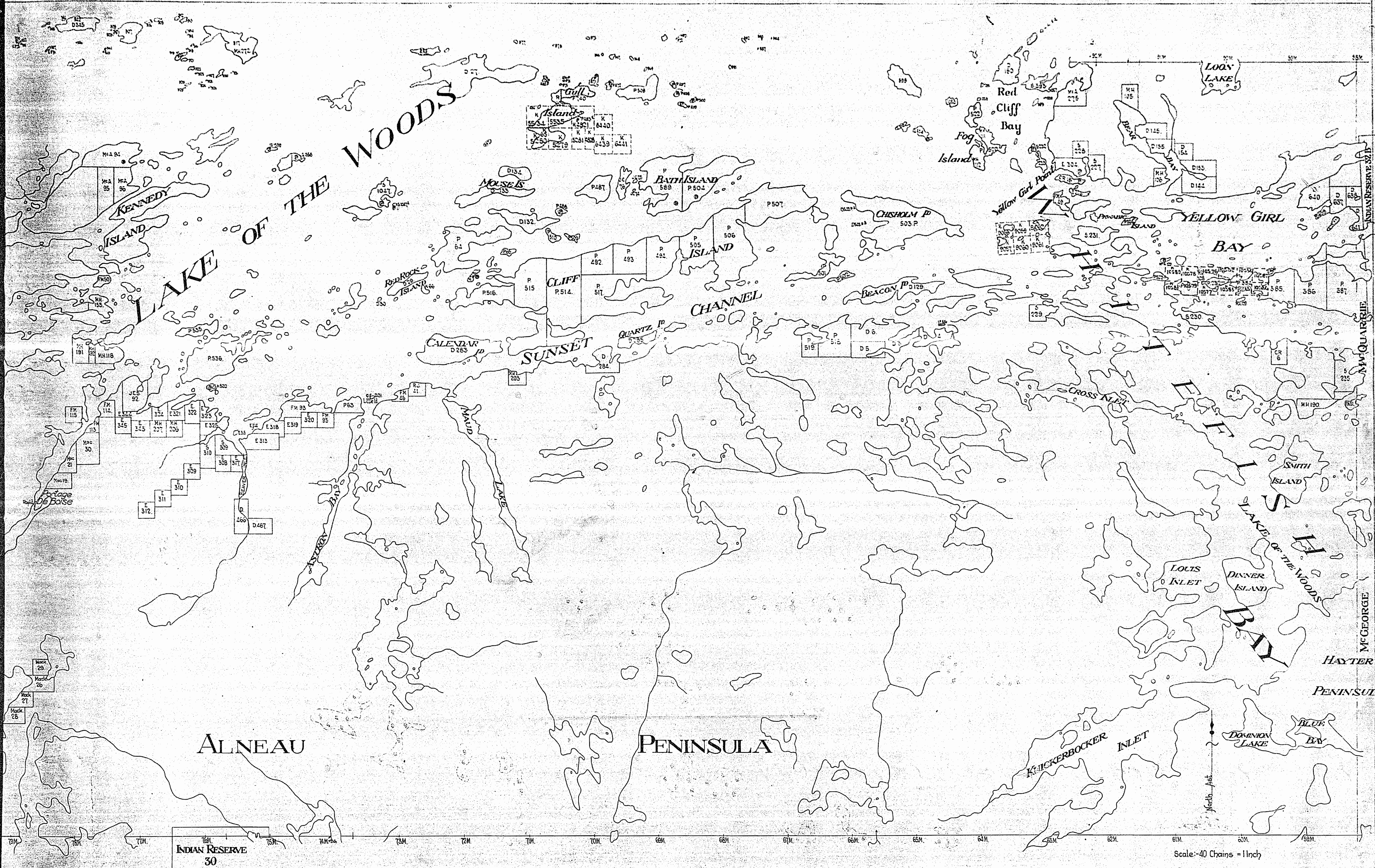
PARK BOUNDARIES ARE POSITIONED
200m IN PERPENDICULAR DISTANCE
FROM THE WATER'S EDGE ALONG
THE SHORE OF THE MAINLAND
UNLESS OTHERWISE SHOWN.



AREA

| | | |
|------------|---|--------------|
| PART 1 | = | 3792.00 ha |
| PART 2 | = | 8000.00 ha |
| PART 3 | = | 0.25 ha |
| PART 4 | = | 1.25 ha |
| PART 5 | = | 0.75 ha |
| PART 6 | = | 4.50 ha |
| PART 7 | = | 0.75 ha |
| PART 8 | = | 0.12 ha |
| PART 9 | = | 0.13 ha |
| PART 10 | = | 1100.00 ha |
| TOTAL AREA | = | 12 899.75 ha |





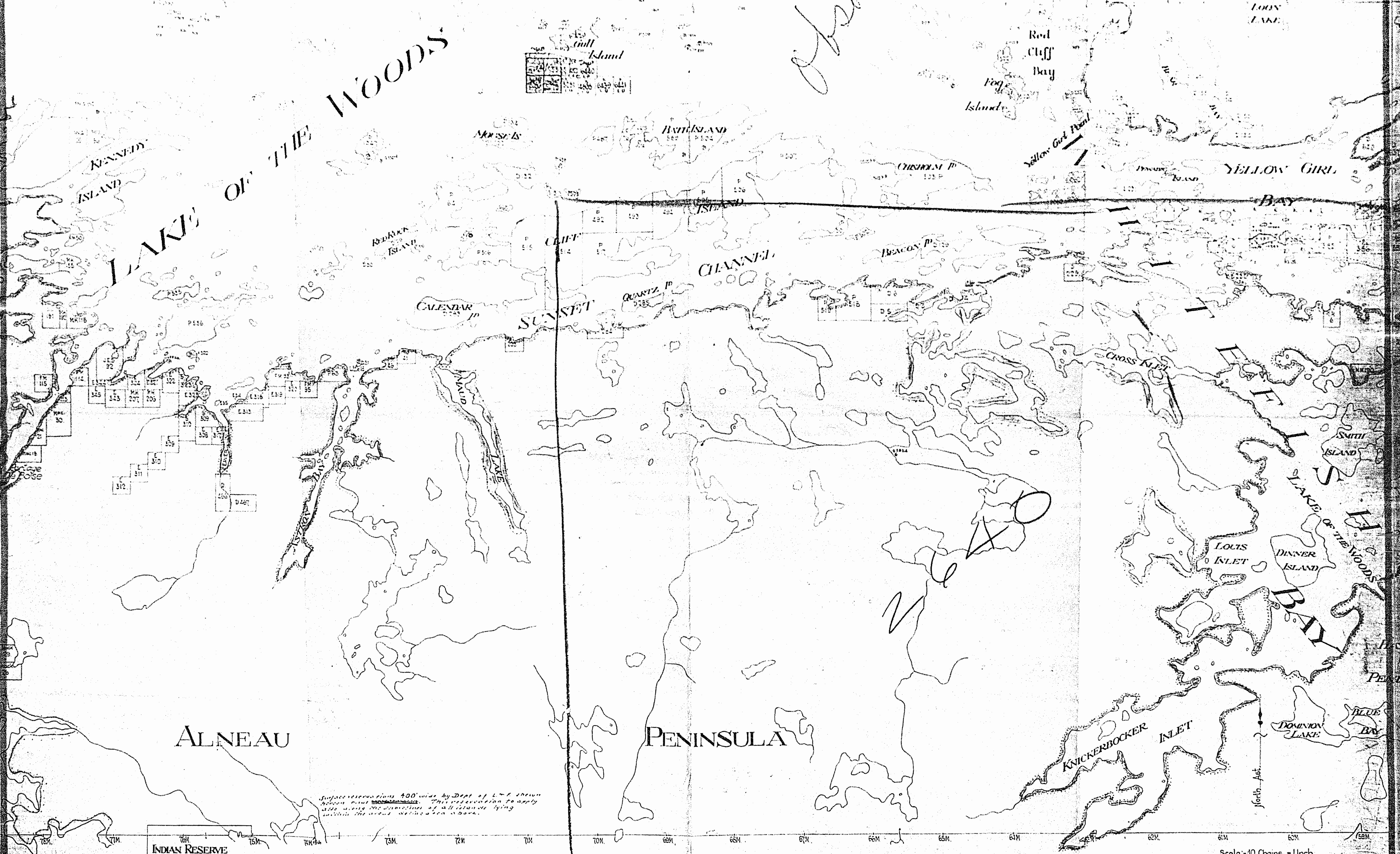
INDIAN RESERVE
30

Scale: -40 Chains = 1 Inch

INDIAN RESERVE 30
McGEORGIE

Isabela

LAKE OF THE WOODS

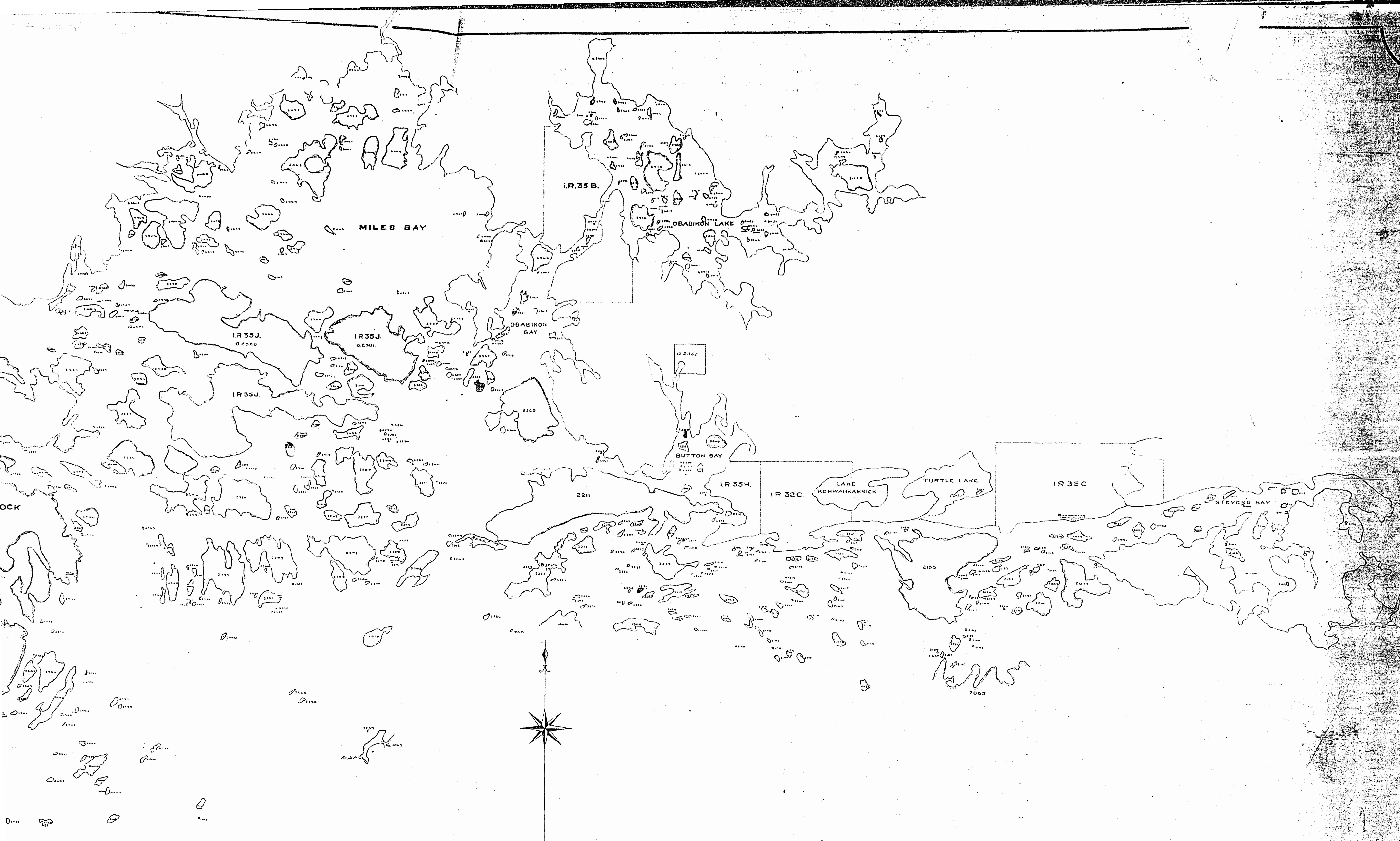


INDIAN RESERVE
30

Subject reserves from 400' wide by Dept. of L. & E. shown below are ~~not~~ shown. This reservation to apply also to the coastline of all islands lying within the area defined here above.

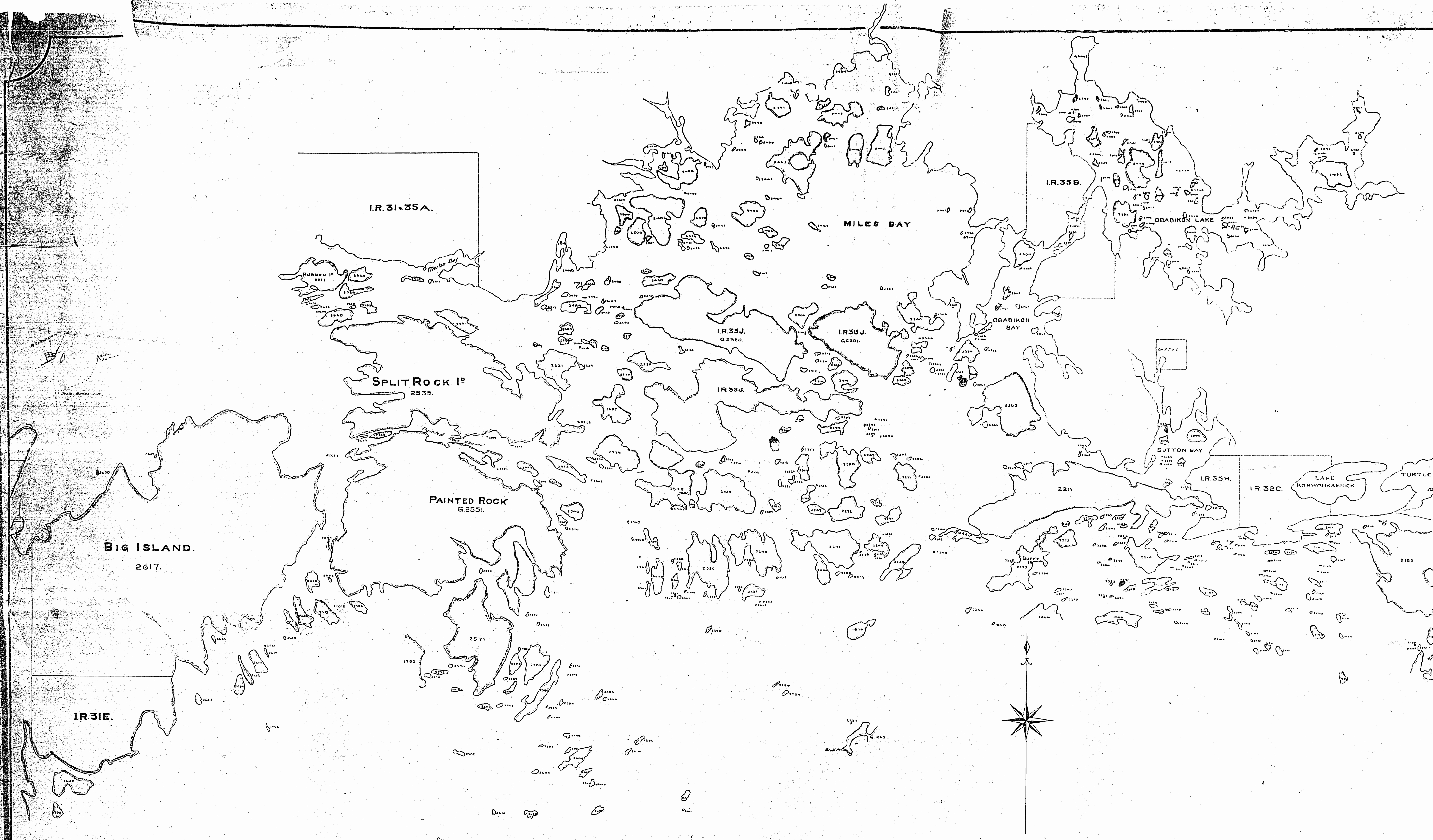
Scale: 40 Chains = 1 Inch

26 AD



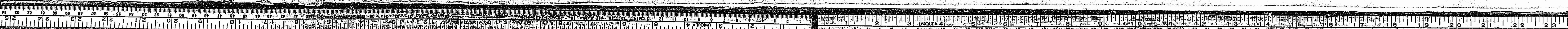
PLAN OF ISLANDS
— IN —
SOUTHERN PART OF LAKE OF WOODS

Surveyed by O. L. S. D. J. Gillon, in 1922.
Scale: 40 chains = 1 Inch.



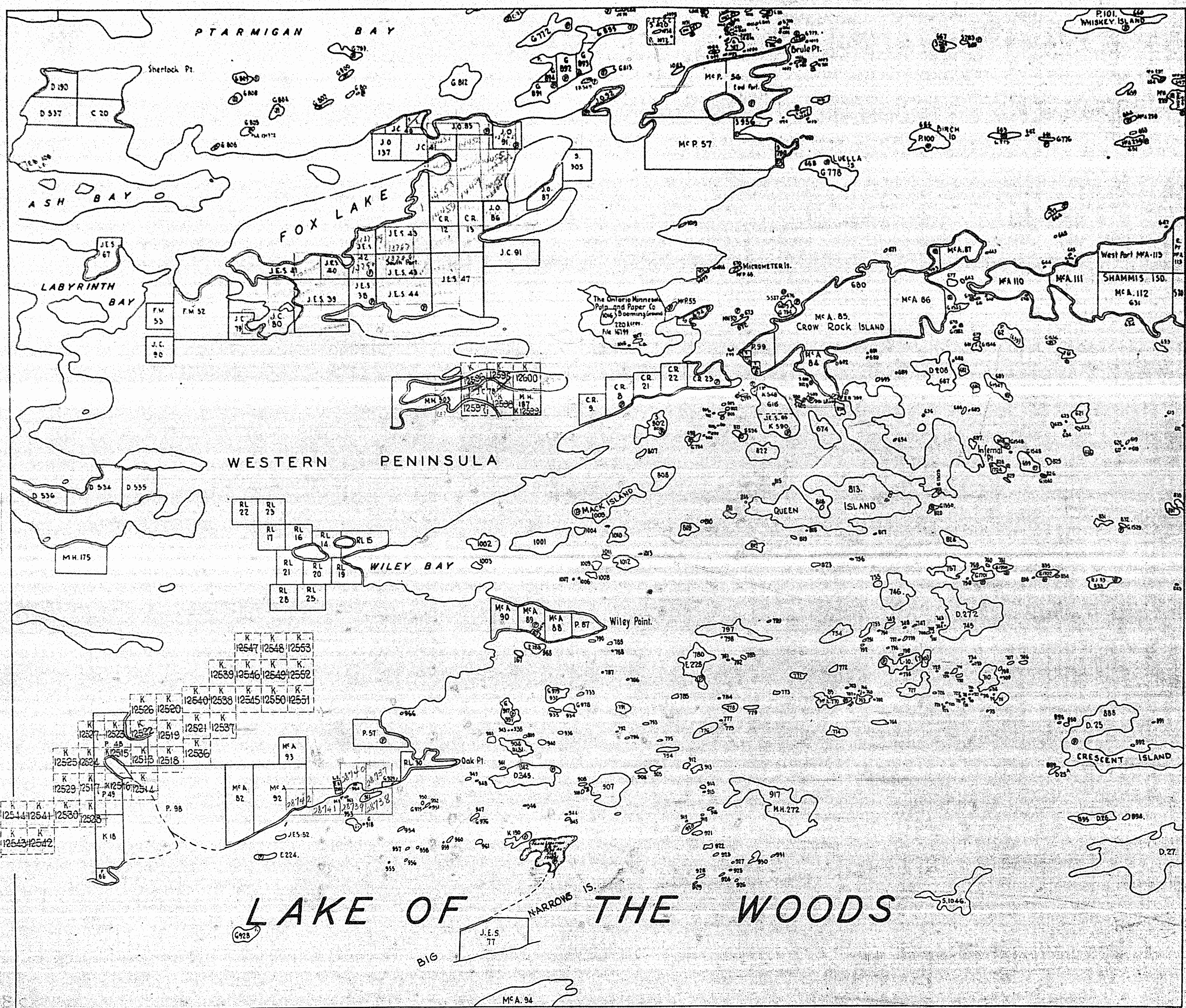
PLAN OF ISLANDS
 — IN —
SOUTHERN PART OF LAKE OF WOODS

Surveyed by O. L. S. D. J. Gillon, in 1922.
 Scale: 40 chains = 1 Inch.



FLOODING:-

In the disposition of Crown Lands, Reserve Flooding Rights, without compensation up to Estimation Contours 1051-20 and 1053-86 Geomatic Survey of CANADA, DATUM 1925 Adjustment.
 For detail of Contour, Refer to platfile plans filed in Patents Branch and Surveyors Division: see File #922
 Contour 1051-20 is from the head of Dalles Rapids to controls Old Fort Island
 Contour 1053-86 is from the Head of Controls Old Fort Island including Chalmerton Bay and Tributaries, Jan 1940.



2062

LEGEND

- Railway
- Paved Highway
- Gravel Highway
- Other Motor Roads
- Wagon Road
- Sleigh Road, Trail or Path
- Highway Route Number
- Telephone or Telegraph Line
- Electric Power Line

DISPOSITION OF CROWN LANDS
 PATENTED: P
 LEASE: L
 LICENSE OF OCCUPATION: L.O.
 SALES

AREA PLAN
 DISTRICT OF
KENORA
 TRACED: E.J.D. CHECKED: E.J.D.
 APPROVED: SCALE: 1 IN. = 40 CHS.

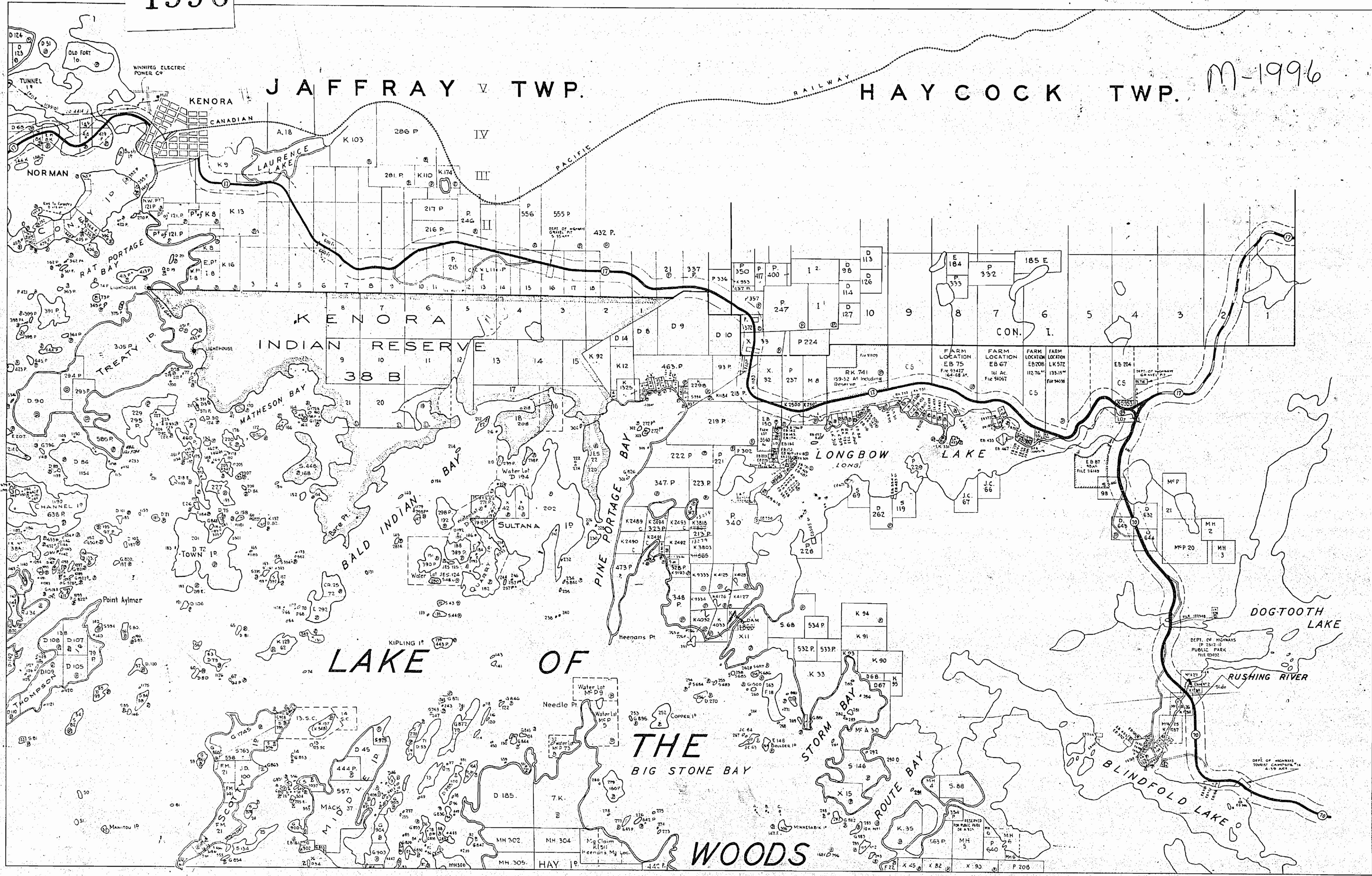


PLAN OF ISLANDS
SOUTHERN PART OF LAKE OF WOODS

Surveyed by O. L. S. D. J. Gillon in 1922.
Scale: 40 chains = 1 inch

1996

REFERENCES



FLOODING

In the disposition of Crown Lands, Reserve Flooding Rights, without compensation up to Easement Contours 1051-20 and 1053-86 Geodetic Survey of Canada, DATUM, 1923 Adjustment. For detail of Contour, Refer to portfolio plans filed in PATENTS BRANCH AND SURVEYS DIVISION, see File 4922. Contour 1051-20 is from the head of Dalles Rapids to controls Old Fort Island. Contour 1053-86 is from the Head of Controls Old Fort Island including Darlington Bay and Tributaries Jan 1940.

ROADS

Highway No 70, Dept. of Highways Plans P-2512 and P-2525-3.
 Highway No 17, Dept. of Highways Plans P-2512-2, P-2325-10, P-2325-9 and P-2262-1.
 Old Highway, surveyed under instructions from Dept. of Lands and Forests, by O.L.S. Kirkup 1924.
 600 feet on each side of certain highways has been reserved from disposition by Order in Council Dated Nov. 9th 1939 File 93427 & 123032.
 100 feet on each side of the centre line of the Highway is vested in the Department of Highways, by Orders in Council, Dated Nov. 9th and Dec. 6th 1939. File 121757.

PARKS

Rushing River Park Reserve from Highways plan P 2512-1 File 123032

TRANSMISSION LINES

Winnipeg Electric Power Transmission Line 100' Wide. L.O.4561 & 4414, File 113910

K-49

LEGEND

- Railway
- Paved Highway
- Gravel Highway
- Other Motor Roads
- Wagon-Road
- Trail or Path
- Highway Route Number
- Telephone or Telegraph Line
- Electric Power Line
- Lighthouse
- Dam

DISPOSITION OF CROWN LANDS
 PATENTED
 LEASE
 LICENSE OF OCCUPATION

AREA PLAN #2
 DISTRICT OF KENORA
 TRACED E.J.D. CHECKED E.J.D.
 APPROVED SCALE: 1 IN. = 40 CHS

LAKE OF THE WOODS (M.P.)

1996

JAFFRAY TWP.

For status please refer to Twp. plan M-1992

HAYCOCK TWP.

For status please refer to Twp plan M-1987

AREA OF
LAKE of the WOODS
(N.E. PART)
& KIRKUP TWP.
DISTRICT OF
KENORA

KENORA
MINING DIVISION

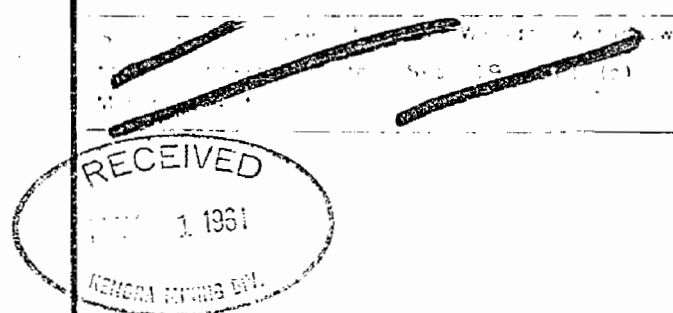
SCALE: 1-INCH = 40 CHAINS

LEGEND

- PATENTED LAND
- CROWN LAND SALE
- LEASES
- LOCATED LAND
- LICENSE OF OCCUPATION
- MINING RIGHTS ONLY
- SURFACE RIGHTS ONLY
- ROADS
- IMPROVED ROADS
- KING'S HIGHWAYS
- RAILWAYS
- POWER LINES
- MINING CLAIMS
- WATER

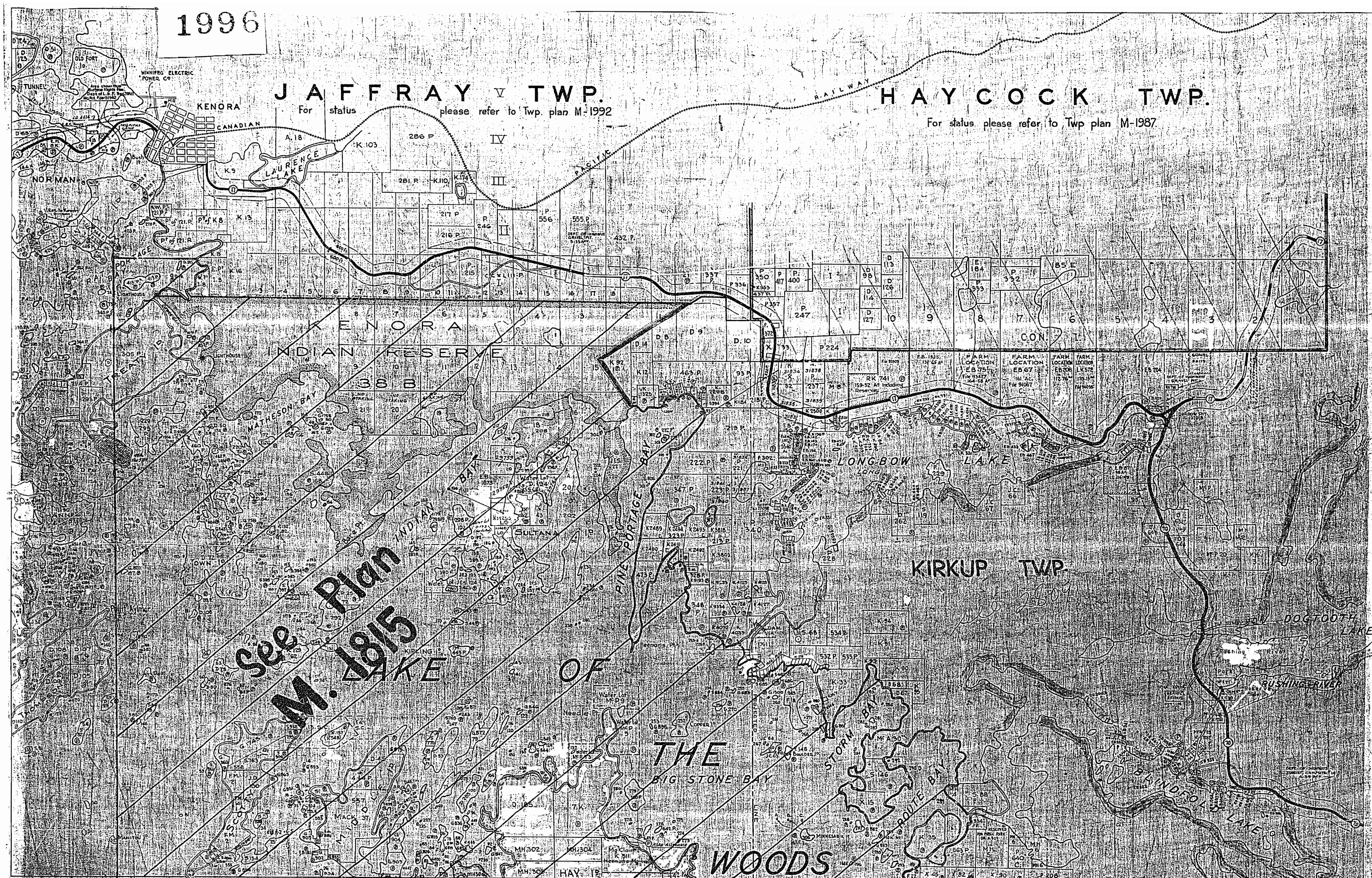
NOTES

400' reserve around all lakes and rivers to Dept. of Lands & Forests



See Plan M-1815

LAKE OF THE WOODS



#3

PLAN NO M-1996

DEPARTMENT OF MINES
ONTARIO

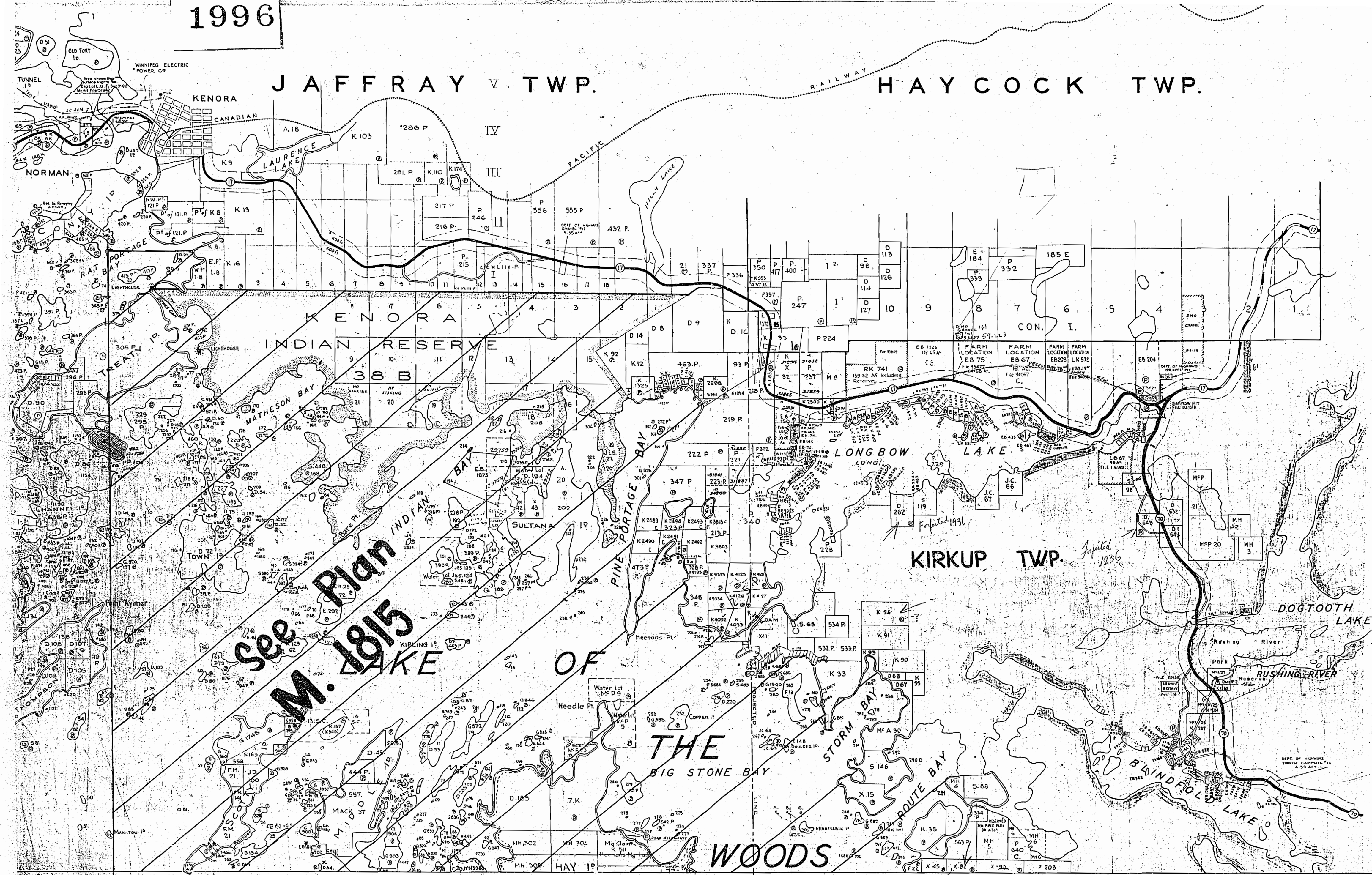
Islands in Lake of the Woods withdrawn from staking under Sect. 59, Sub. C
File 67/05

1996

JAFFRAY TWP.

HAYCOCK TWP.

LAKE OF WOODS
N.E. PART
KIRKUP TWP.



See Plan M. 1815

LAKE OF THE WOODS

KIRKUP TWP.

1936

Oct. 12/16.

#4
KIRKUP
M-1996

Islands in Lake of the Woods withdrawn from staking under Sect. 39 Sub C. File 67051.