

SURVEYS

C.N. Railway (formerly Canadian Northern Ontario Railway) by E. Fitzgerald O.L.S. 1919. Plan No. L2-20.

MINING & SURFACE RIGHTS WITHDRAWN FROM STAKING ORDER W-75-1102, NWR-83/01/09, PRESCRIBED-BURN REOPENED BY ORDER O-75-33/183/NWR 93/2/09

TOPOGRAPHY

LAKES, RIVERS, ETC., FROM FOREST RESOURCES INVENTORY SHEET No 495854

THE INFORMATION THAT APPEARS ON THIS MAP HAS BEEN COMPILED FROM VARIOUS SOURCES, AND ACCURACY IS NOT GUARANTEED. THOSE WISHING TO STAKE MINING CLAIMS SHOULD CONSULT WITH THE MINING RECORDER, MINISTRY OF NORTHERN DEVELOPMENT AND MINES, FOR ADDITIONAL INFORMATION ON THE STATUS OF THE LANDS SHOWN HEREON.

LEGEND

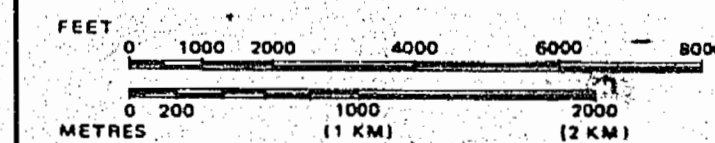
- HIGHWAY AND ROUTE No.
- OTHER ROADS
- TRAILS
- SURVEYED LINES:
 - TOWNSHIPS, BASE LINES, ETC.
 - LOTS, MINING CLAIMS, PARCELS, ETC.
- UNSURVEYED LINES:
 - LOT LINES
 - PARCEL BOUNDARY
 - MINING CLAIMS ETC.
- RAILWAY AND RIGHT OF WAY
- UTILITY LINES
- NON-PERENNIAL STREAM
- FLOODING OR FLOODING RIGHTS
- SUBDIVISION OR COMPOSITE PLAN
- RESERVATIONS
- ORIGINAL SHORELINE
- MARSH OR MUSKEG
- MINES
- TRAVERSE MONUMENT

DISPOSITION OF CROWN LANDS

TYPE OF DOCUMENT	SYMBOL
PATENT, SURFACE & MINING RIGHTS	
" SURFACE RIGHTS ONLY	
" MINING RIGHTS ONLY	
LEASE, SURFACE & MINING RIGHTS	
" SURFACE RIGHTS ONLY	
" MINING RIGHTS ONLY	
LICENCE OF OCCUPATION	
ORDER-IN-COUNCIL	
RESERVATION	
CANCELLED	
SAND & GRAVEL	
LAND USE PERMITS FOR COMMERCIAL TOURISM/OUTPOST CAMPS	

NOTE: MINING RIGHTS IN PARCELS PATENTED PRIOR TO MAY 6, 1919, VESTED IN ORIGINAL PATENTEE BY THE PUBLIC LANDS ACT, R.S.O. 1970, CHAP. 380, SEC. 63, SUBSEC. 1.

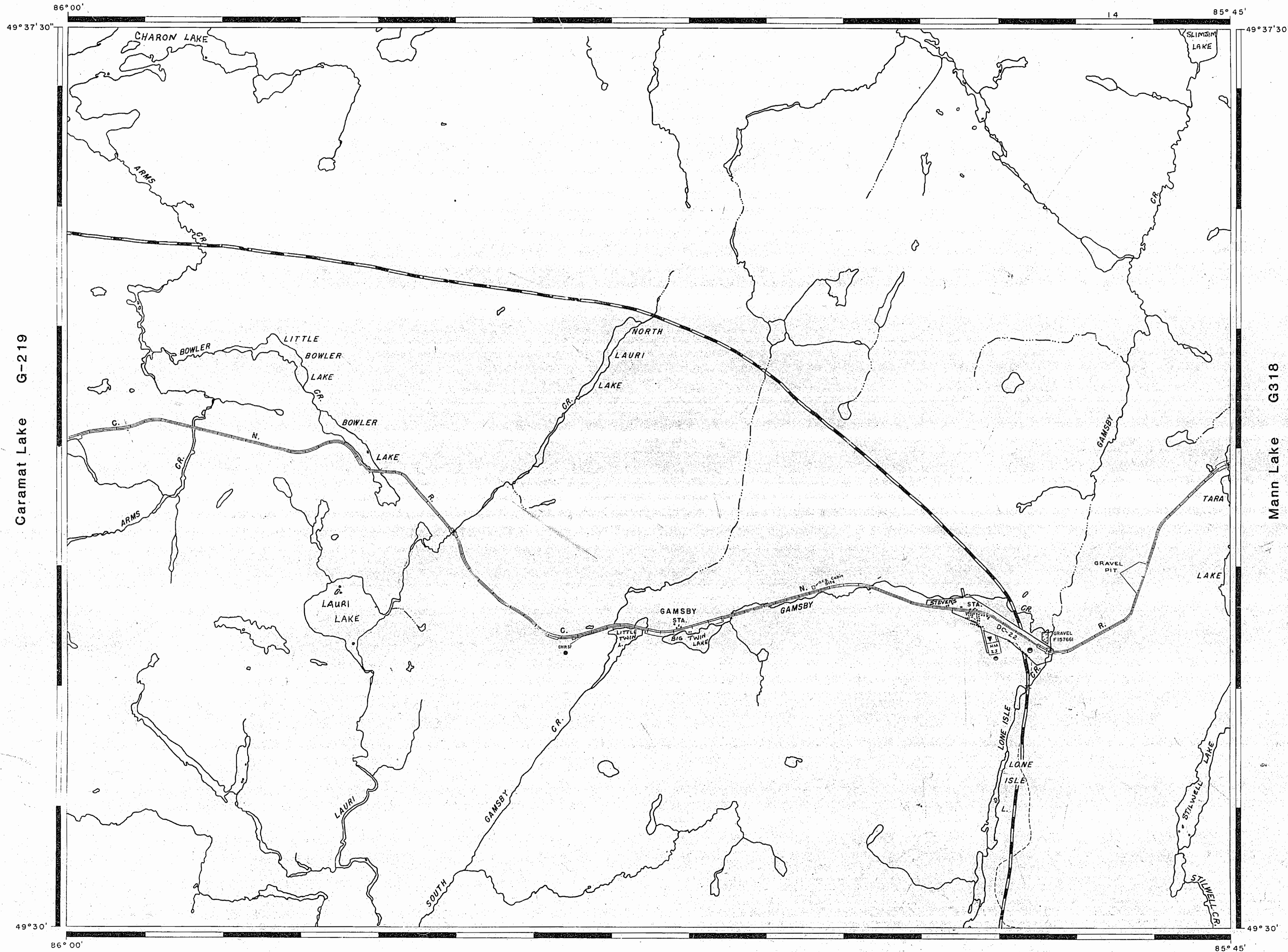
SCALE: 1 INCH = 40 CHAINS



AREA
LAURI LAKE
M.N.R. ADMINISTRATIVE DISTRICT
GERALDTON/TERRACE BAY
MINING DIVISION
THUNDER BAY
LAND TITLES / REGISTRY DIVISION
THUNDER BAY

Ministry of Land Management
Natural Resources Branch
Ontario
November 5, 1981

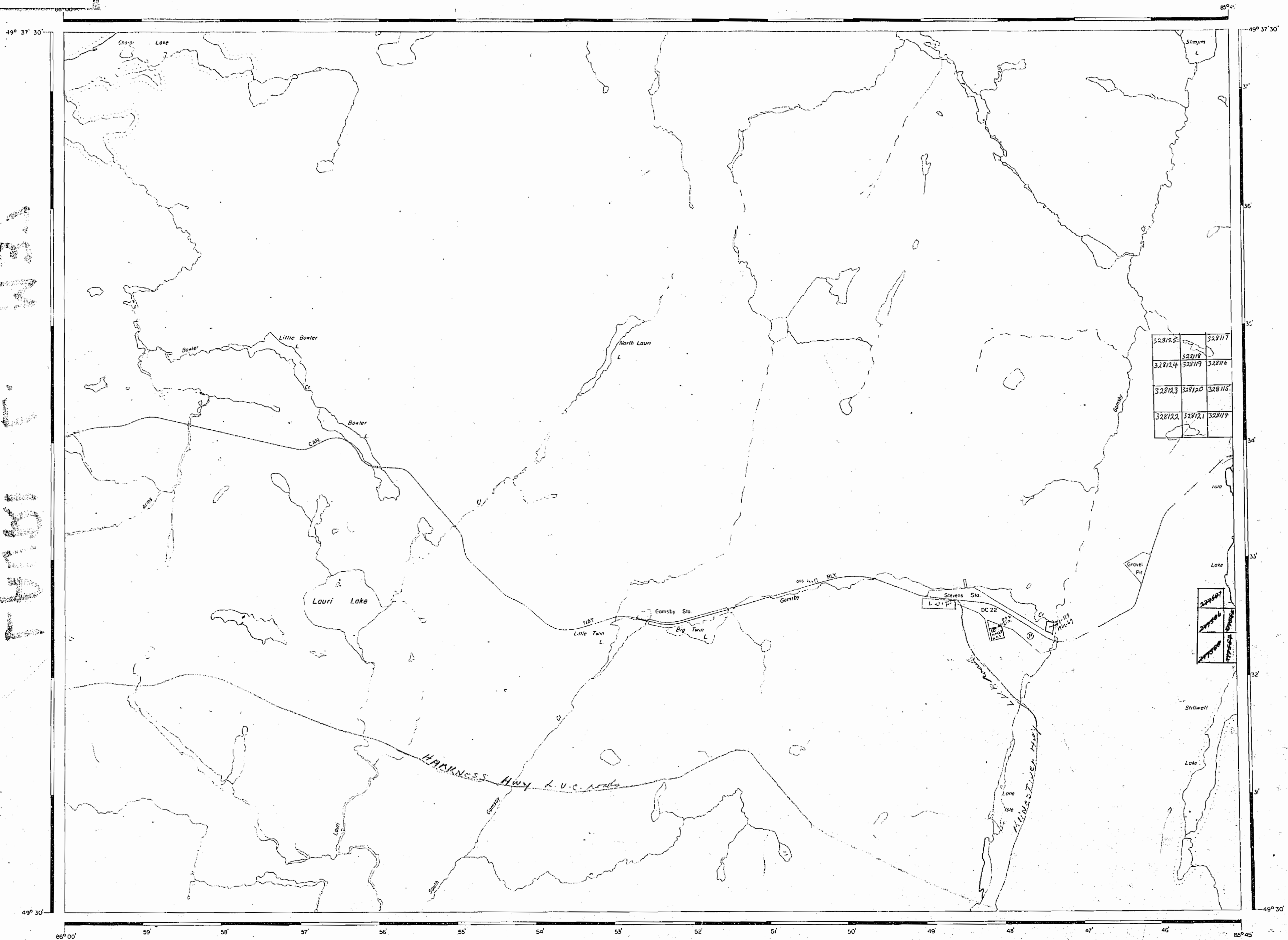
DATE: SEPT. 17, 1981. Number
G-303



Caramat Lake G-219

Mann Lake G318

L.A.M.S. 1957



328125	328117
328124	328116
328123	328115
328122	328114

328127	328119
328126	328118
328125	328117
328124	328116

AREA OF
LAURI LAKE
 DISTRICT OF THUNDER BAY
 PORT ARTHUR MINING DIVISION
 SCALE: 1-INCH = 40 CHAINS

LEGEND

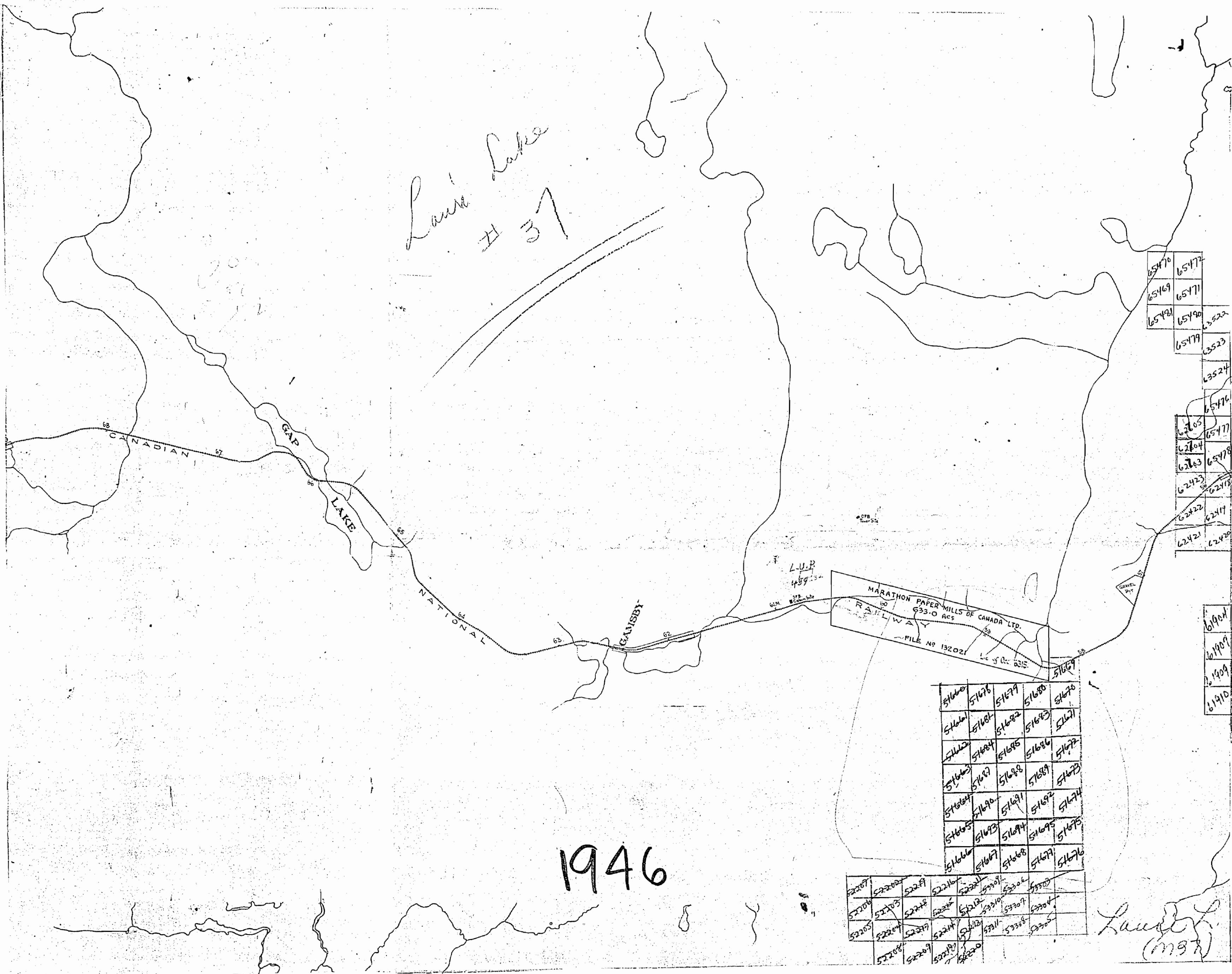
PATENTED LAND	⊙
CROWN LAND SALE	C.S.
LEASES	⊖
LOCATED LAND	Loc.
LICENSE OF OCCUPATION	L.O.
MINING RIGHTS ONLY	M.R.O.
SURFACE RIGHTS ONLY	S.R.O.
ROADS	—
IMPROVED ROADS	—
KING'S HIGHWAYS	—
RAILWAYS	—
POWER LINES	—
MARSH OR MUSKEG	—
MINES	⋈

NOTES
 400' Reserve to Dept. of Lands & Forests shown thus: —

L.V.P. Steam Str.
 ref. 5 Dec. 1957 of M. Dept. Guide

1957
 PORT ARTHUR RECEIVED
 12 1957
 MINING DIVISION

Laura Lake # 37



65470	65472
65469	65471
65481	65490
65479	65522
	65523
	65524
	65476

62103	65477
62104	65478
62103	65478
62423	62418
62422	62417
62421	62420

61904
61907
61909
61910

L.U.P.
459 234
MARATHON PAPER MILLS OF CANADA LTD.
633.0 ACS
RAILWAY
FILE NO 132021
Lic of Occ 6015

51660	51676	51679	51680	51670
51661	51681	51682	51683	51671
51662	51684	51685	51686	51672
51663	51687	51688	51689	51673
51664	51690	51691	51692	51674
51665	51693	51694	51695	51675
51666	51667	51668	51669	51676

52207	52202	52219	52216	52221	52208	52206	52203
52206	52203	52218	52215	52212	52210	52207	52204
52205	52204	52217	52214	52213	52211	52208	52205
52208	52209	52210	52211	52212	52213	52214	52215

1946

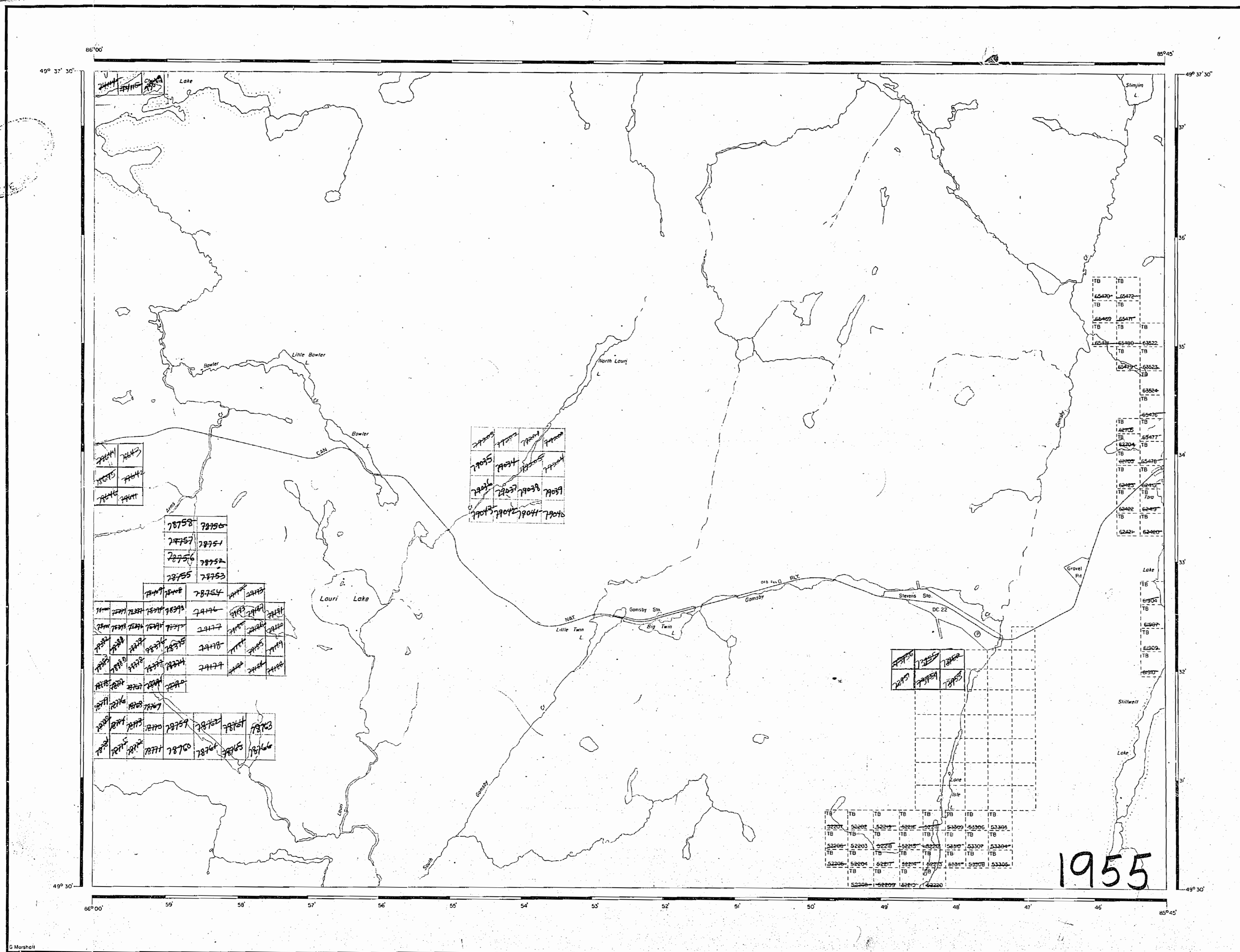
Laura Lake (MSK)

AREA OF
LAURI LAKE
 DISTRICT OF
 THUNDER BAY
 PORT ARTHUR
 MINING DIVISION
 SCALE: 1-INCH = 40 CHAINS

LEGEND

PATENTED LAND	Ⓟ
CROWN LAND SALE	C.S.
LEASES	Ⓞ
LOCATED LAND	Loc.
LICENSE OF OCCUPATION	L.O.
MINING RIGHTS ONLY	M.R.O.
SURFACE RIGHTS ONLY	S.R.O.
ROADS	—
IMPROVED ROADS	—
KING'S HIGHWAYS	—
RAILWAYS	—
POWER LINES	—
MARSH OR MUSKEG	—
MINES	Ⓜ

NOTES
 400' Reserve to Dept. of Lands & Forests
 shown thus: —



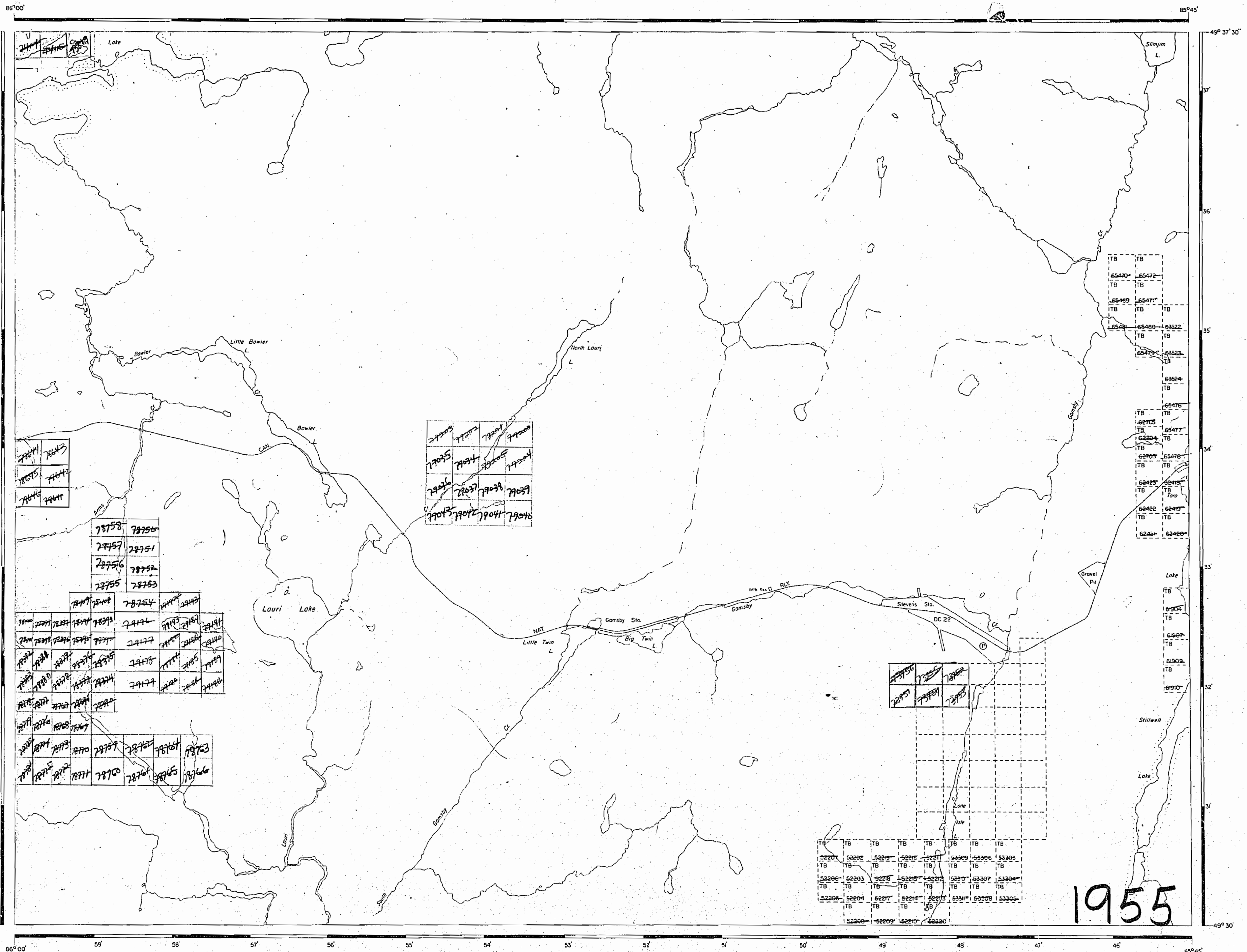
PLAN NO. **M-37**
 DEPARTMENT OF MINES
 - ONTARIO -

LAURI LAKE

LAURI LAKE

M-37

M-37



AREA OF
LAURI LAKE

DISTRICT OF
THUNDER BAY

PORT ARTHUR
MINING DIVISION

SCALE: 1-INCH = 40 CHAINS

LEGEND

- PATENTED LAND Ⓟ
- CROWN LAND SALE C.S.
- LEASES Ⓞ
- LOCATED LAND Loc.
- LICENSE OF OCCUPATION L.O.
- MINING RIGHTS ONLY M.R.O.
- SURFACE RIGHTS ONLY S.R.O.
- ROADS —
- IMPROVED ROADS —
- KING'S HIGHWAYS —
- RAILWAYS —
- POWER LINES —
- MARSH OR MUSKEG —
- MINES ⚡

NOTES

400' Reserve to Dept. of Lands & Forests shown thus: —

1955

PLAN NO. M-37

DEPARTMENT OF MINES
— ONTARIO —