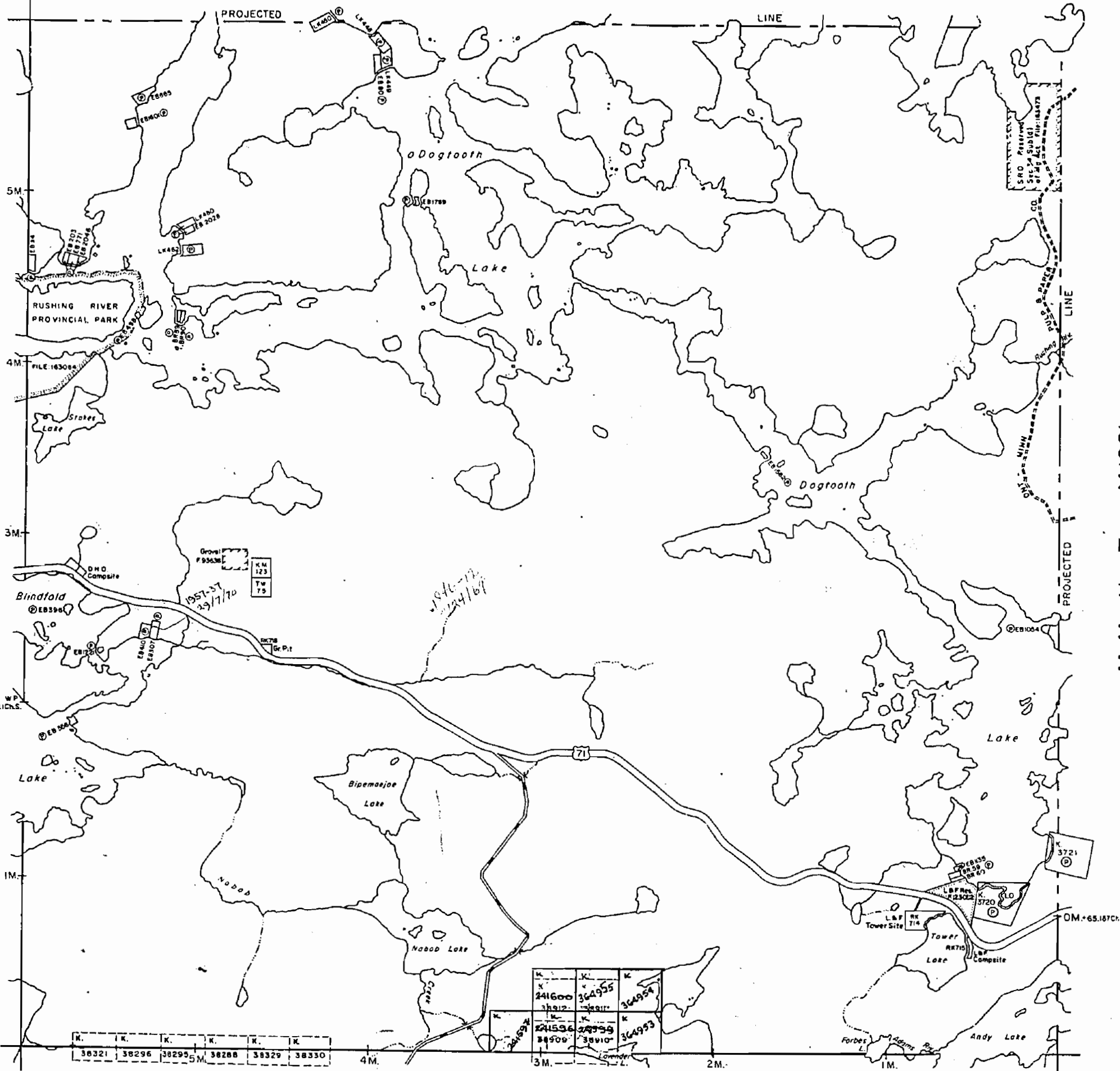


1841

Coyle Twp. - M.1970



Code Twp. - M.1962

THE TOWNSHIP OF

LE MAY

DISTRICT OF KENORA

KENORA MINING DIVISION

SCALE: 1-INCH 40 CHAINS

LEGEND

- PATENTED LAND (P)
- CROWN LAND SALE (C.S.)
- LEASES (L)
- LOCATED LAND (Loc.)
- LICENSE OF OCCUPATION (L.O.)
- MINING RIGHTS ONLY (M.R.O.)
- SURFACE RIGHTS ONLY (S.R.O.)
- ROADS
- IMPROVED ROADS
- KING'S HIGHWAYS
- RAILWAYS
- POWER LINES
- MARSH OR MUSKEG
- MINES
- CANCELLED (C)

NOTES

400' Surface Rights Reservation around all lakes and rivers.

Roads indicated Ontario-Minnesota Pulp & Paper Co. are private roads but may be used by prospectors only after permission is obtained from the Company office in Kenora.

KENORA
FILED:
REC'D. DEC 28 1966
RECEIPT No.
MINING DIVISION

JUNE 6/67
Dec. 7/73
May 2/74
June 18/74

PLAN NO. M.1841

DEPARTMENT OF MINES
— ONTARIO —

McMeekin Twp. - M.1981

Kirkup Twp. - M.2809

1841 LE MAY

Coyle Twp. - M.1970

THE TOWNSHIP OF
OF

LE MAY

DISTRICT OF
KENORA

KENORA
MINING DIVISION

SCALE: 1-INCH 40 CHAINS

LEGEND

- PATENTED LAND Ⓟ
- CROWN LAND SALE C.S.
- LEASES Ⓛ
- LOCATED LAND Loc.
- LICENSE OF OCCUPATION L.O.
- MINING RIGHTS ONLY M.R.O.
- SURFACE RIGHTS ONLY S.R.O.
- ROADS —
- IMPROVED ROADS —
- KING'S HIGHWAYS —
- RAILWAYS —
- POWER LINES —
- MARSH OR MUSKEG —
- MINES Ⓜ
- CANCELLED Ⓢ

NOTES

400' Surface Rights Reservation around all lakes and rivers.

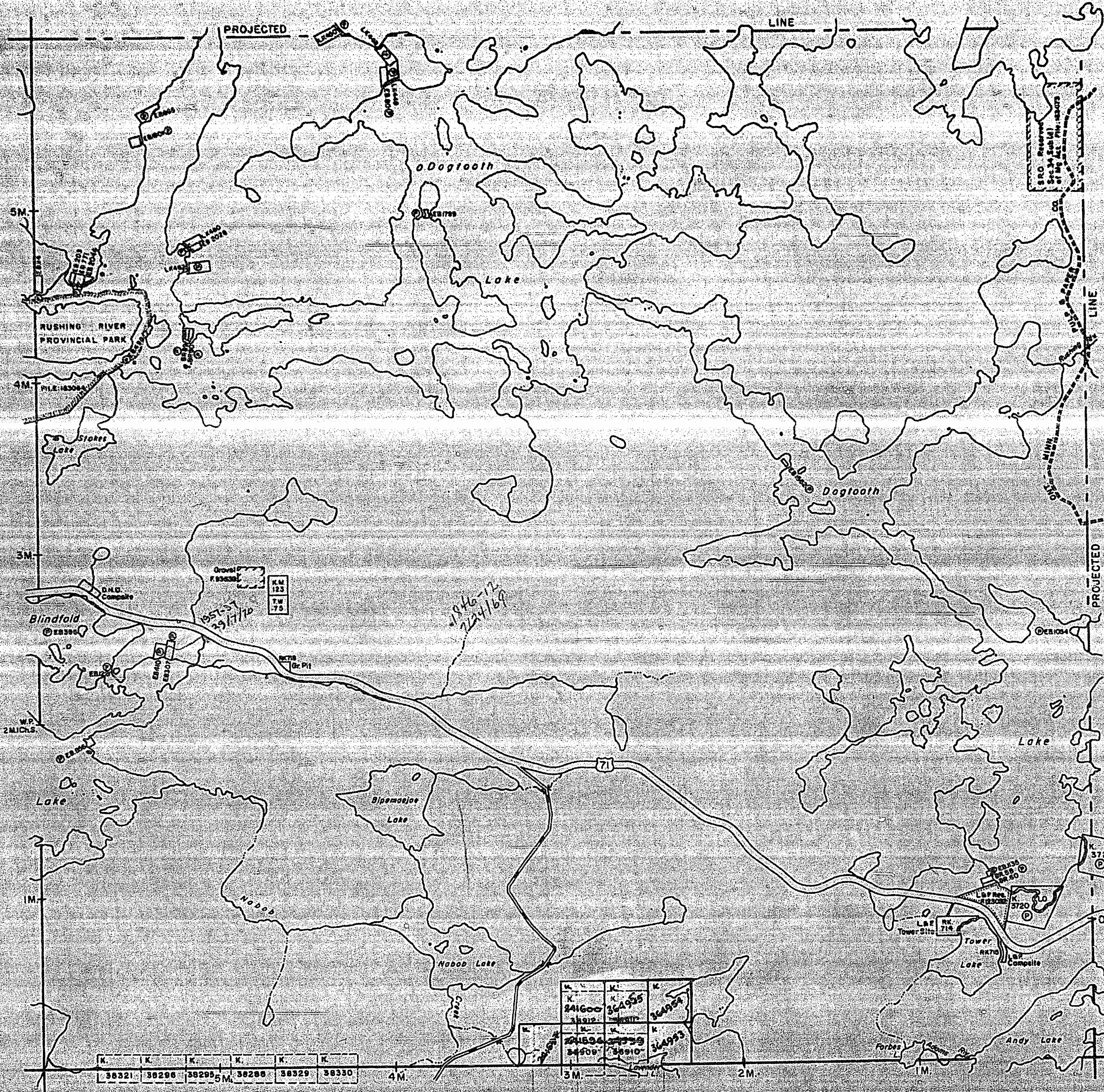
Roads indicated Ontario-Minnesota Pulp & Paper Co. are private roads but may be used by prospectors only after permission is obtained from the Company office in Kenora.

KENORA
FILED:
REC'D. DEC 28 1966
RECEIPT No.
MINING DIVISION

JUNE 6/67
Dec 7/73
May 2/74
June 18/74

PLAN NO. **M.1841**

DEPARTMENT OF MINES
—ONTARIO—



Kirkup Twp. - M.2809

McMeekin Twp. - M.1981

Code Twp. - M.1962

1841 LE MAY

Coyle Twp. - M.1970

THE TOWNSHIP OF
OF

LE MAY

DISTRICT OF
KENORA

KENORA
MINING DIVISION

SCALE: 1-INCH 40 CHAINS

LEGEND

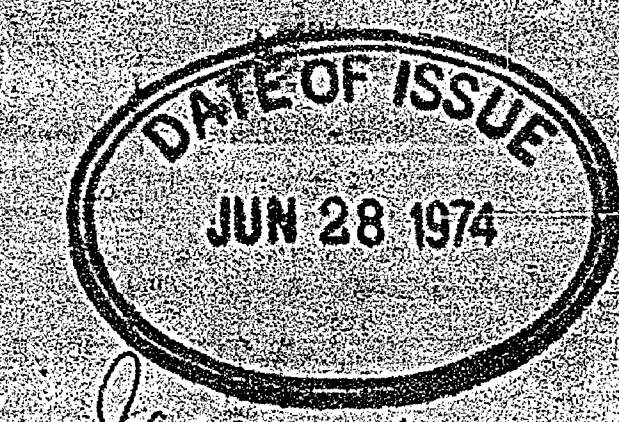
PATENTED LAND	Ⓟ
CROWN LAND SALE	C.S.
LEASES	Ⓞ
LOCATED LAND	Loc.
LICENSE OF OCCUPATION	L.O.
MINING RIGHTS ONLY	M.R.O.
SURFACE RIGHTS ONLY	S.R.O.
ROADS	—
IMPROVED ROADS	—
KING'S HIGHWAYS	—
RAILWAYS	—
POWER LINES	—
MARSH OR MUSKEG	—
MINES	Ⓜ
CANCELLED	C

NOTES

400' Surface Rights Reservation around all lakes and rivers.

Roads indicated Ontario-Minnesota Pulp & Paper Co. are private roads but may be used by prospectors only after permission is obtained from the Company office in Kenora.

52 E 9



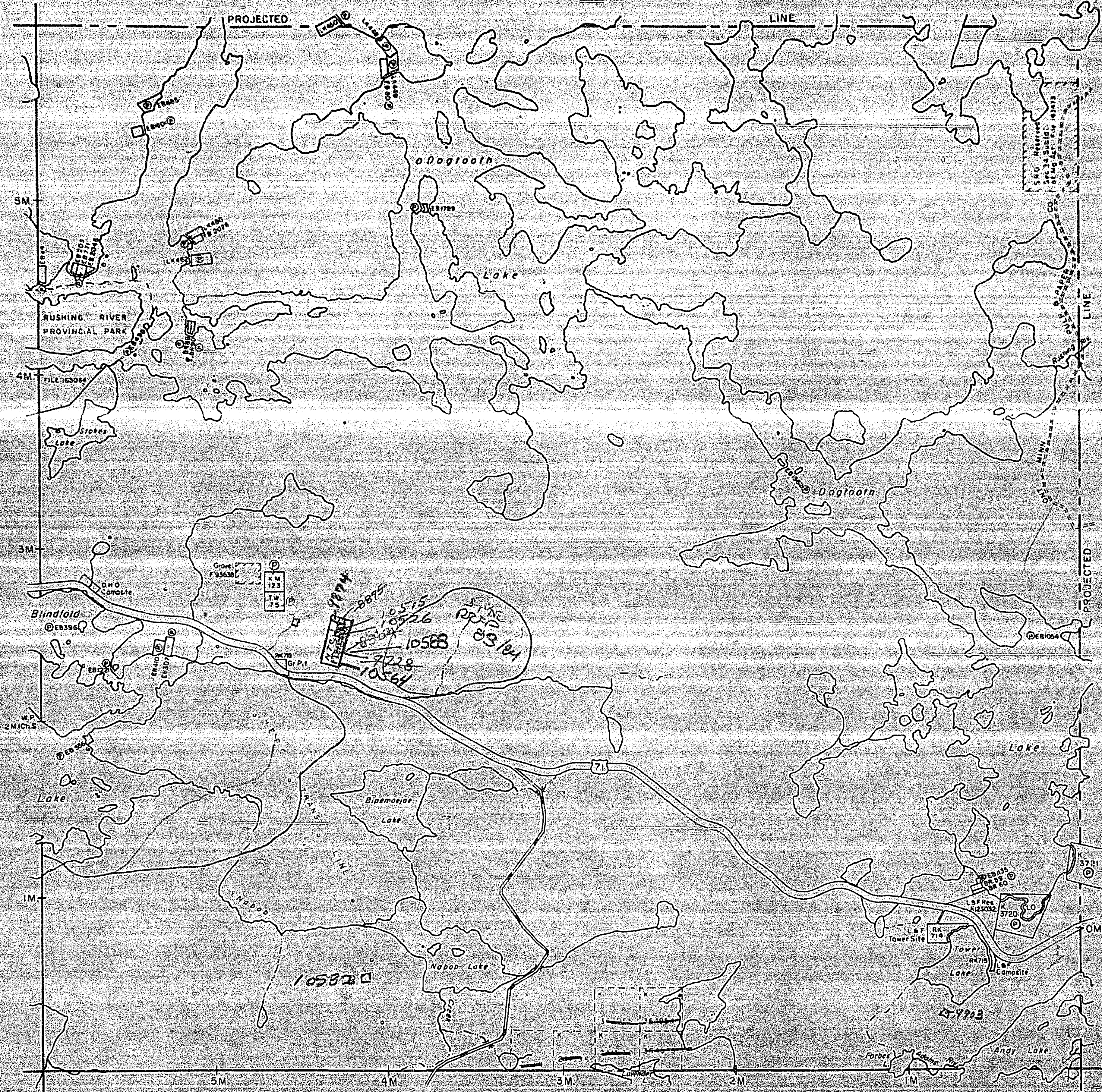
Jan. 21/75

PLAN NO M.1841

MINISTRY OF NATURAL RESOURCES
SURVEYS AND MAPPING BRANCH

Kirkup Twp. - M.2809

McMeekin Twp. - M.1981



LE MAY TWP.
M.1841

Code Twp. - M.1962

1841 LE MAY

Coyle Twp. - M.1970

THE TOWNSHIP OF
OF

LE MAY

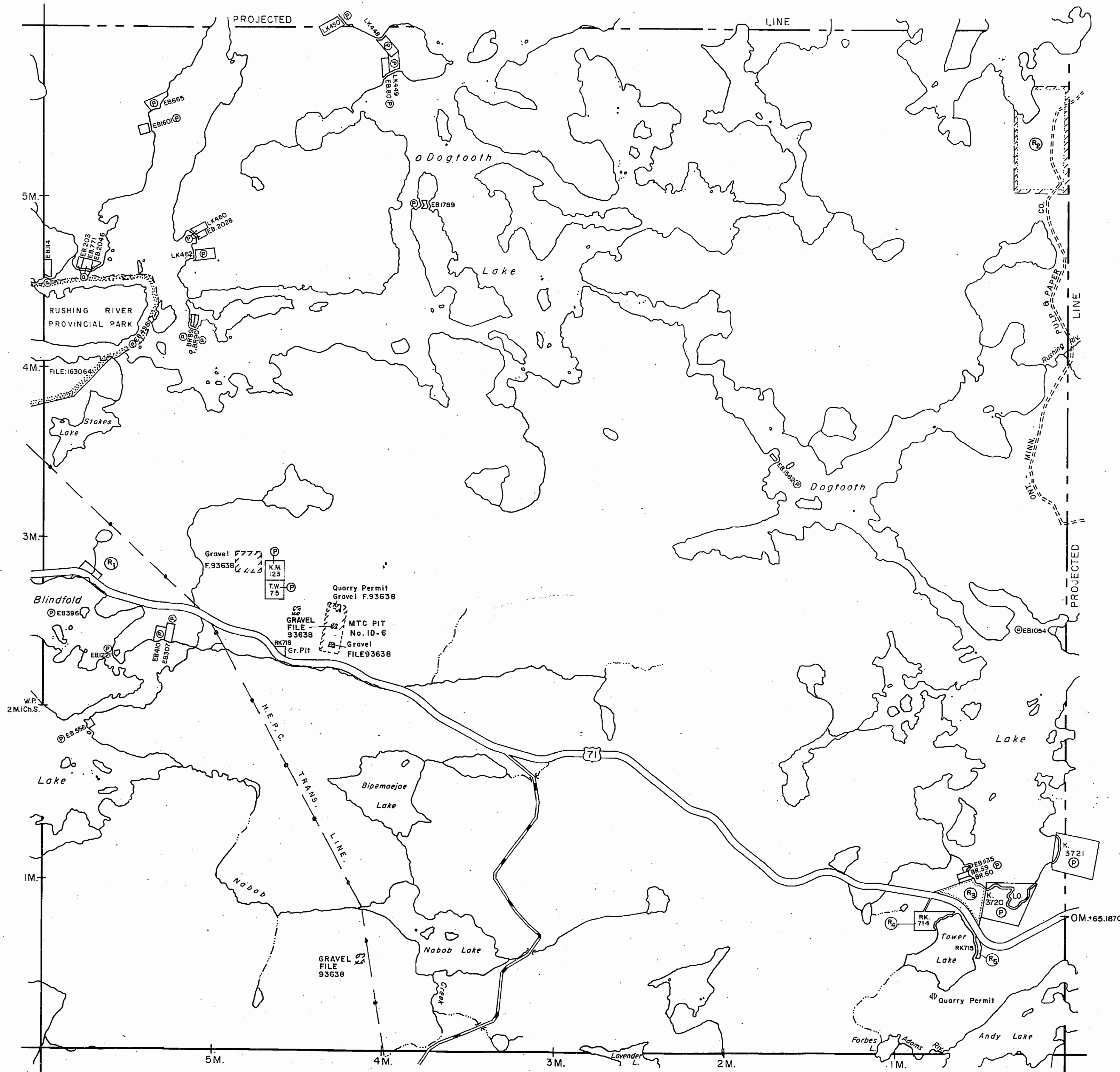
DISTRICT OF
KENORA

KENORA
MINING DIVISION

SCALE: 1-INCH = 40 CHAINS

Kirkup Twp. - M.2809

McMeekin Twp. - M.1981



LEGEND

PATENTED LAND	(P)
CROWN LAND SALE	C.S.
LEASES	(L)
LOCATED LAND	Loc.
LICENSE OF OCCUPATION	L.O.
MINING RIGHTS ONLY	M.R.O.
SURFACE RIGHTS ONLY	S.R.O.
ROADS	(—)
IMPROVED ROADS	(—)
KING'S HIGHWAYS	(—)
RAILWAYS	(—)
POWER LINES	(—)
MARSH OR MUSKEG	(+)
MINES	(M)
CANCELLED	(C)

NOTES

400' Surface Rights Reservation along the shores of all lakes and rivers.

Roads indicated Ontario - Minnesota Pulp & Paper Co. are private roads but may be used by prospectors only after permission is obtained from the Company office in Kenora.

AREAS WITHDRAWN FROM DISPOSITION

S.R. - SURFACE RIGHTS MAY 30 1983 MINING RIGHTS

Description	Order No.	Date	Disposition	File
(R1) MTC Compsite			Ministry of Natural Resources TORONTO	
(R2) Sec. 34 Sub (d) of Mg. Act Reserved			S.R.O.	163473
(R3) MNR Reserve				123032
(R4) MNR Tower Site				
(R5) MNR Compsite				

KENORA
MINING DIV.
RECEIVED
JUN 9 1983
AM 7 8 9 10 11 12 1 2 3 4 5 6 PM

Effective →
cus
Liner

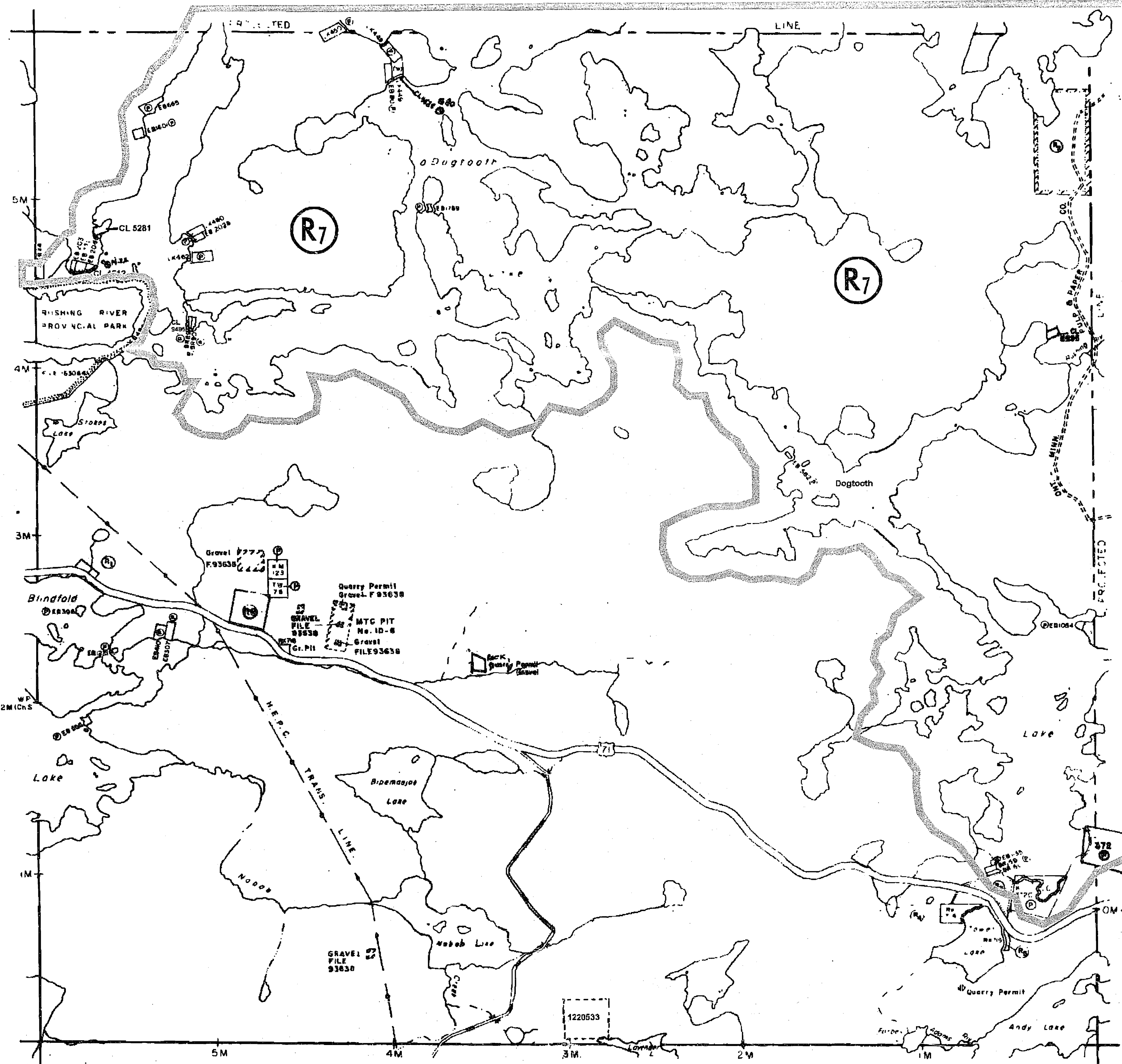
Obsolete Aug. 23/84

PLAN NO. **M.1841**

Code Twp. - M.1962

ONTARIO
MINISTRY OF NATURAL RESOURCES
SURVEYS AND MAPPING BRANCH

Coyle Twp. - G 1357



Code Twp. - G 1326

THE TOWNSHIP
OF

LE MAY

DISTRICT OF
KENORA

KENORA
MINING DIVISION

SCALE: 1-INCH 40 CHAINS

THE INFORMATION THAT APPEARS ON THIS MAP HAS BEEN COMPILED FROM VARIOUS SOURCES, AND ACCURACY IS NOT GUARANTEED. THOSE WISHING TO STAKE MINING CLAIMS SHOULD CONSULT WITH THE MINING RECORDER, MINISTRY OF NORTHERN DEVELOPMENT AND MINES, FOR ADDITIONAL INFORMATION ON THE STATUS OF THE LANDS SHOWN HEREON.

LEGEND

PATENTED LAND	(P)
CROWN LAND SALE	C.S.
LEASES	(L)
LOCATED LAND	Loc
LICENSE OF OCCUPATION	L.O.
MINING RIGHTS ONLY	M.R.O.
SURFACE RIGHTS ONLY	S.R.O.
ROADS	(---)
IMPROVED ROADS	(=)
KING'S HIGHWAYS	(=)
RAILWAYS	(=)
POWER LINES	(=)
MARSH OR MUSKEG	(=)
MINES	(M)
CANCELLED	(C)

NOTES

400' Surface Rights Reservation along the shores of all lakes and rivers.

Roads indicated Ontario-Minnesota Pulp & Paper Co. are private roads but may be used by prospectors only after permission is obtained from the Company office in Kenora.

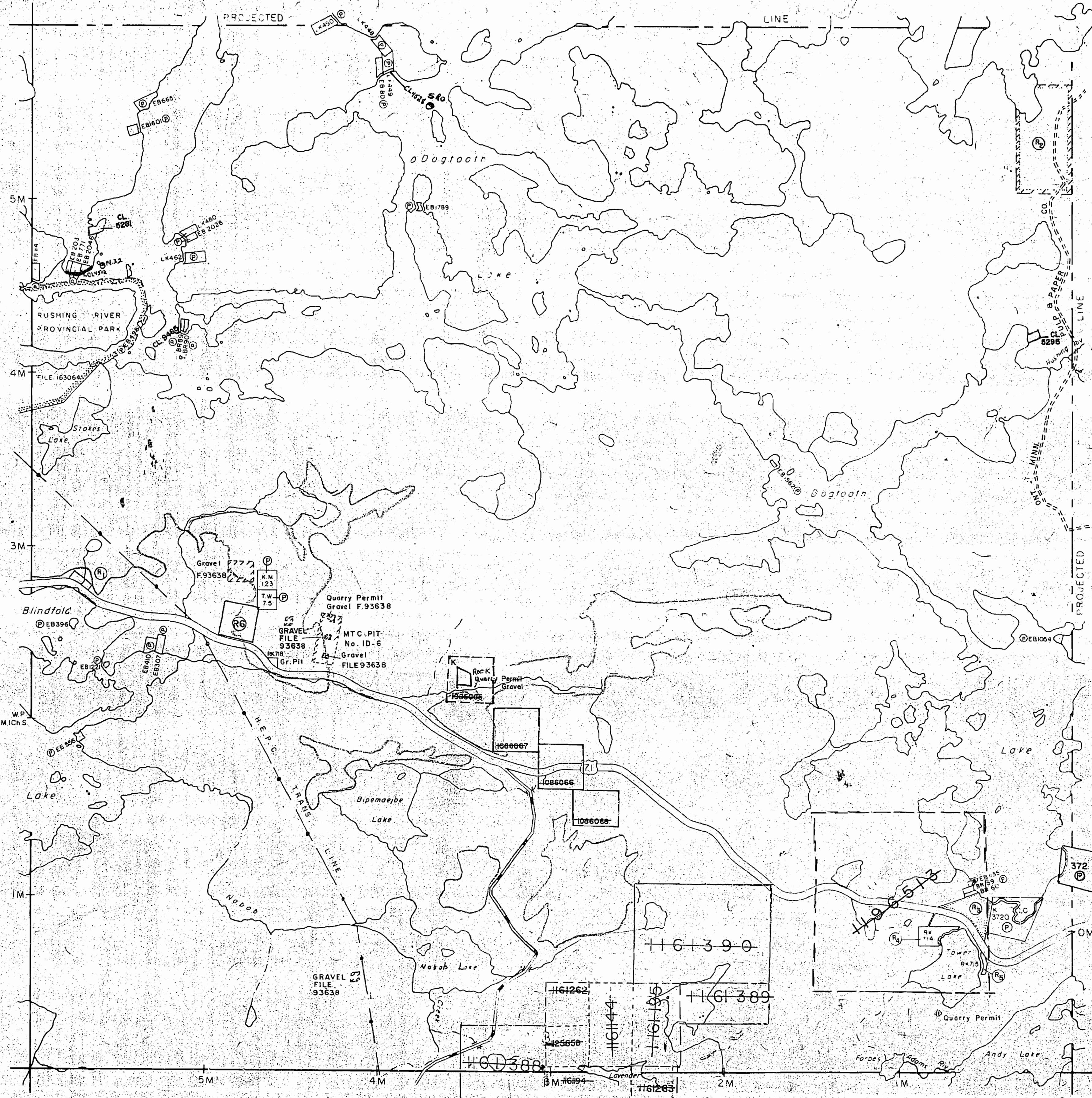
SEC.35 W-LL-P2363/99 ONT MAY 17/89 M&S
(200m FROM WATER'S EDGE IN DESIGNATED AREAS)
AREAS WITHDRAWN FROM DISPOSITION

S.R. - SURFACE RIGHTS		M.R. - MINING RIGHTS		
Description	Order No.	Date	Disposition	File
(R7) MTC Composite				
(R7) Sec 34 Subid of Mg Act Reserved			S R O	183473
(R7) MNR Reserve				123032
(R7) MNR Tower Site				
(R7) MNR Compsite				
(R7) 35275 W-K-60/95		JULY 25/98	S&M	185160
<p><i>Effective as shown</i></p> <p>Aug. 23, 1984</p>				
			AM 7:8 9:10:11:12:1:2:3 4:5:6	PM
G-1341				

PLAN NO. **M.1841**

ONTARIO
MINISTRY OF NATURAL RESOURCES
SURVEYS AND MAPPING BRANCH

G 1327
Coyle Twp. - M.1970



G 1339
Kirkup Twp. - M.2809

G 1347
McMeekin Twp. - M.1981

G 1326
Code Twp. - M.1962

THE TOWNSHIP
OF

LE MAY

DISTRICT OF
KENORA

KENORA
MINING DIVISION

THE INFORMATION THAT APPEARS ON THIS MAP HAS BEEN COMPILED FROM VARIOUS SOURCES, AND ACCURACY IS NOT GUARANTEED. THOSE WISHING TO STAKE MINING CLAIMS SHOULD CONSULT WITH THE MINING RECORDER, MINISTRY OF NORTHERN DEVELOPMENT AND MINES, FOR ADDITIONAL INFORMATION ON THE STATUS OF THE LANDS SHOWN HEREON.

SCALE: 1-INCH 40 CHAINS

LEGEND

PATENTED LAND	Ⓟ
CROWN LAND SALE	C.S.
LEASES	Ⓛ
LOCATED LAND	Loc
LICENSE OF OCCUPATION	L.O.
MINING RIGHTS ONLY	M.R.O.
SURFACE RIGHTS ONLY	S.R.O.
ROADS	
IMPROVED ROADS	
KING'S HIGHWAYS	
RAILWAYS	
POWER LINES	
MARSH OR MUSKEG	
MINES	
CANCELLED	

NOTES

400' Surface Rights Reservation along the shores of all lakes and rivers.

Roads indicated Ontario-Minnesota Pulp & Paper Co. are private roads but may be used by prospectors only after permission is obtained from the Company office in Kenora.

AREAS WITHDRAWN FROM DISPOSITION

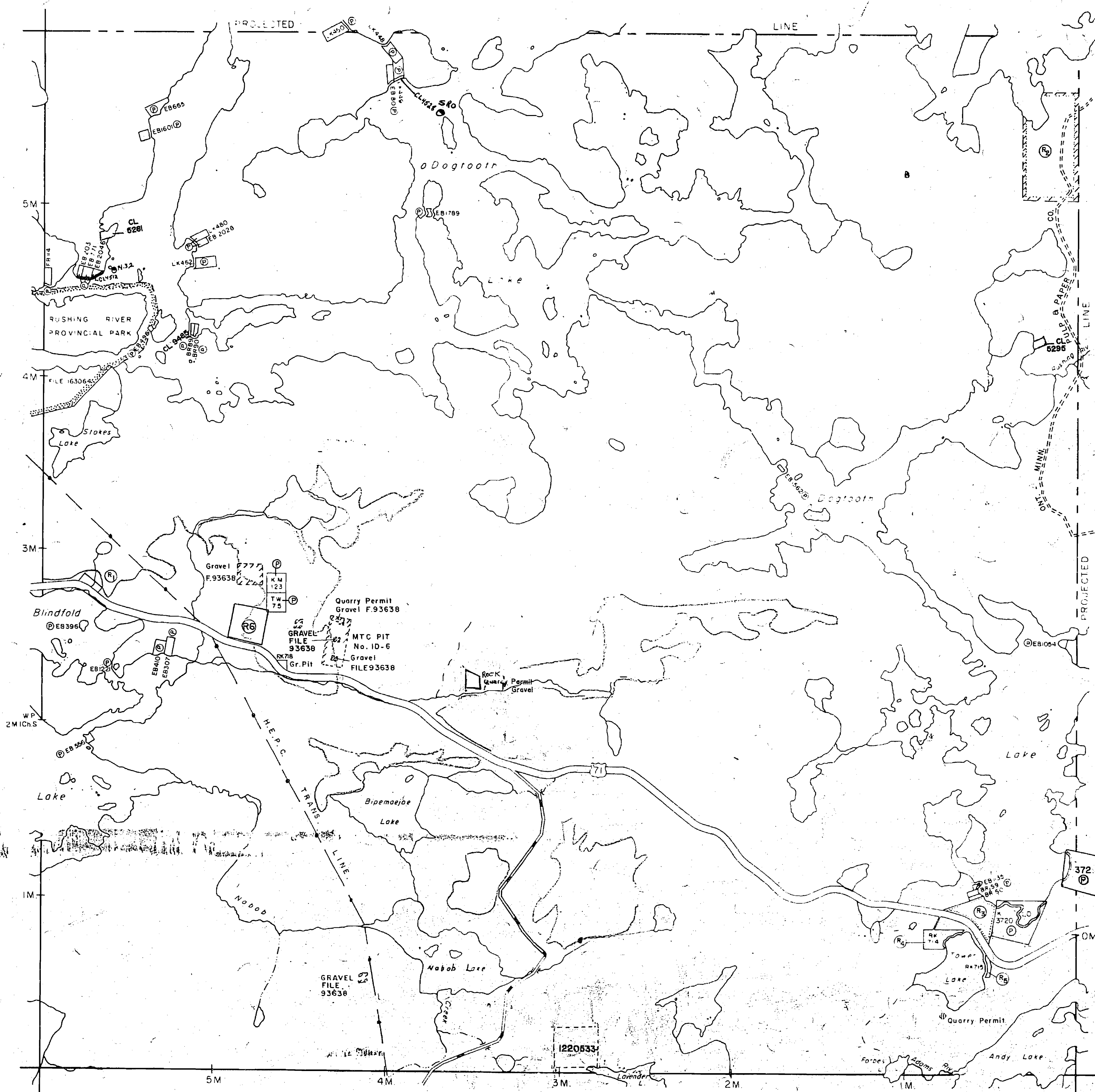
S.R. - SURFACE RIGHTS		M.R. - MINING RIGHTS		
Description	Order No.	Date	Disposition	File
Ⓡ ₁ MTC Composite				
Ⓡ ₂ Sec. 34 Sub (d) of Mg Act Reserved			S.R.O.	163473
Ⓡ ₃ MNR Reserve				123032
Ⓡ ₄ MNR Tower Site				
Ⓡ ₅ MNR Composite				
Ⓡ ₆ SECT 35 W-K-60/95		JULY 25/95	SBM	195150
		Effective as from		AUG 23 1984
		Aug. 23, 1984		

G-1341

PLAN NO. M.1841

ONTARIO
MINISTRY OF NATURAL RESOURCES
SURVEYS AND MAPPING BRANCH

G 1327
Coyle Twp. - M.1970



G 1339
Kirkup Twp. - M.2809

G 1347
McMeekin Twp. - M.1981

G 1326
Code Twp. - M.1962

THE TOWNSHIP
OF

LE MAY

DATE OF

DISTRICT OF
KENORA

FEB 04

PROVINCIAL RE
OFFICE - SU

KENORA
MINING DIVISION

THE INFORMATION THAT
APPEARS ON THIS MAP
HAS BEEN COMPILED
FROM VARIOUS SOURCES,
AND ACCURACY IS NOT
GUARANTEED. THOSE
WISHING TO STAKE MIN-
ING CLAIMS SHOULD CON-
SULT WITH THE MINING
RECORDER, MINISTRY OF
NORTHERN DEVELOP-
MENT AND MINES, FOR AD-
DITIONAL INFORMATION
ON THE STATUS OF THE
LANDS SHOWN HEREON.

SCALE: 1-INCH 40 CHAINS

LEGEND

- PATENTED LAND (P)
- CROWN LAND SALE (C.S.)
- LEASES (L)
- LOCATED LAND (Loc)
- LICENSE OF OCCUPATION (L.O.)
- MINING RIGHTS ONLY (M.R.O.)
- SURFACE RIGHTS ONLY (S.R.O.)
- ROADS
- IMPROVED ROADS
- KING'S HIGHWAYS
- RAILWAYS
- POWER LINES
- MARSH OR MUSKEG
- MINES
- CANCELLED

NOTES

400' Surface Rights Reservation along the shores of all lakes and rivers.

Roads indicated Ontario - Minnesota Pulp & Paper Co. are private roads but may be used by prospectors only after permission is obtained from the Company office in Kenora.

AREAS WITHDRAWN FROM DISPOSITION

S.R. - SURFACE RIGHTS		M.R. - MINING RIGHTS		
Description	Order No.	Date	Disposition	File
(R1) MTC Comsite				
(R2) Sec. 34 Sub (d) of Mg. Act Reserved			S R O	163473
(R3) MNR Reserve				123032
(R4) MNR Tower Site				
(R5) MNR Comsite				
(R6) SECT 75 W-K-60/95		JULY 25/95	S2M	195150

Effective as per
Aug. 23, 1984

Stamp: AUG 23 1984
18910112123456

G-1341

PLAN NO. M.1841

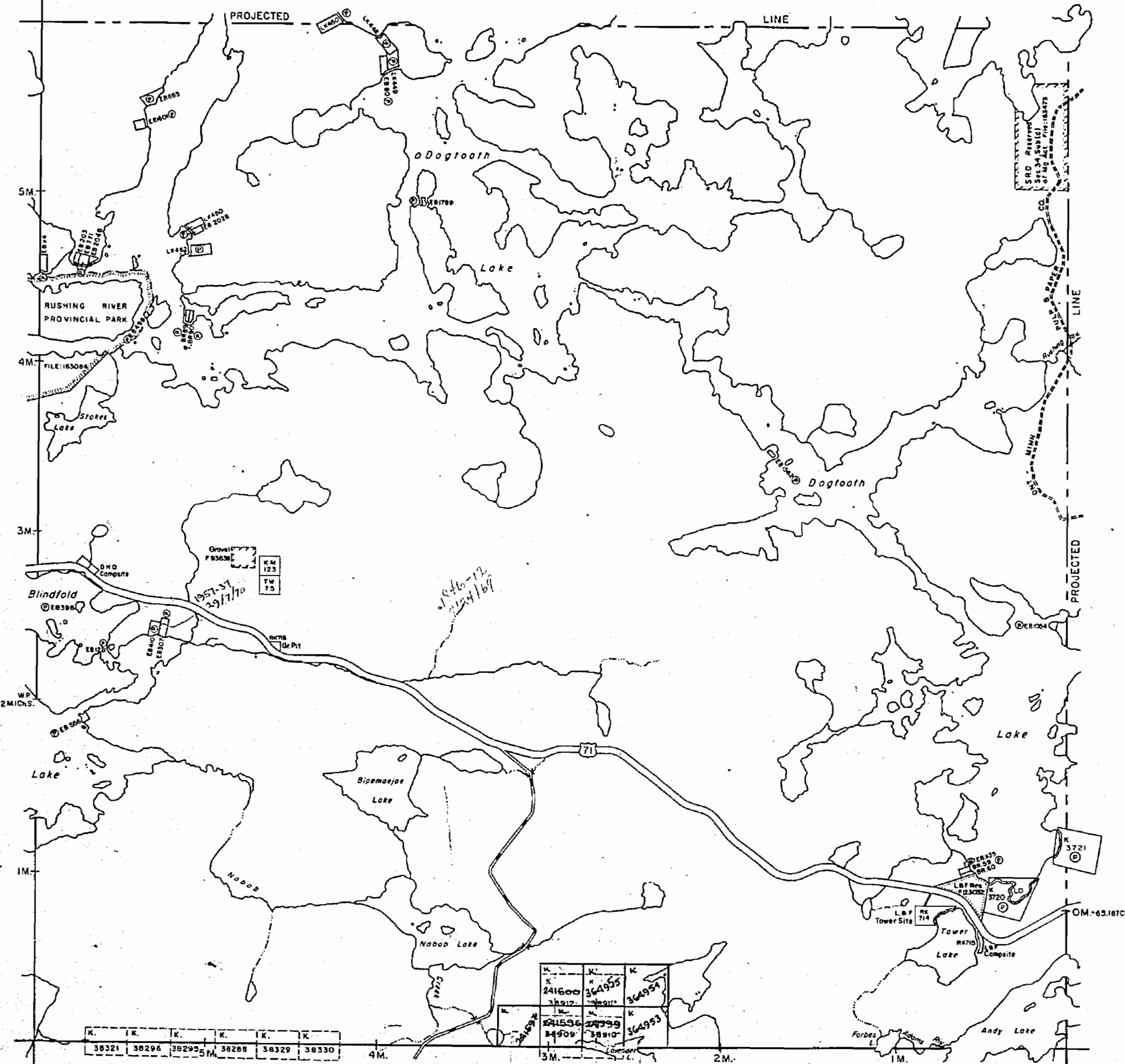
ONTARIO
MINISTRY OF NATURAL RESOURCES
SURVEYS AND MAPPING BRANCH

1841

Coyle Twp. - M.1970

Kirkup Twp. - M.2809

McMeekin Twp. - M.1981



Code Twp. - M.1962

THE TOWNSHIP OF

LE MAY

DISTRICT OF KENORA

KENORA MINING DIVISION

SCALE: 1-INCH 40 CHAINS

LEGEND

- PATENTED LAND Ⓟ
- CROWN LAND SALE C.S.
- LEASES Ⓛ
- LOCATED LAND Loc.
- LICENSE OF OCCUPATION L.O.
- MINING RIGHTS ONLY M.R.O.
- SURFACE RIGHTS ONLY S.R.O.
- ROADS — — — — —
- IMPROVED ROADS — — — — —
- KING'S HIGHWAYS — — — — —
- RAILWAYS — — — — —
- POWER LINES — — — — —
- MARSH OR MUSKEG — — — — —
- MINES X
- CANCELLED C.

NOTES

400' Surface Rights Reservation around all lakes and rivers.

Roads indicated Ontario-Minnesota Pulp & Paper Co. are private roads but may be used by prospectors only after permission is obtained from the Company office in Kenora.

KENORA

FILED:
REC'D. DEC 28 1966
RECEIPT No.
MINING DIVISION

JUNE 6/67
Dec. 2/63
May 2/74
June 18/74

PLAN NO. **M.1841**

DEPARTMENT OF MINES

— ONTARIO —

1841 LE MAY

G 1327
Coyle Twp. - M.1970

THE TOWNSHIP
OF

LE MAY

DISTRICT OF
KENORA

KENORA
MINING DIVISION

THE INFORMATION THAT APPEARS ON THIS MAP HAS BEEN COMPILED FROM VARIOUS SOURCES, AND ACCURACY IS NOT GUARANTEED. THOSE WISHING TO STAKE MINING CLAIMS SHOULD CONSULT WITH THE MINING RECORDER, MINISTRY OF NORTHERN DEVELOPMENT AND MINES, FOR ADDITIONAL INFORMATION ON THE STATUS OF THE LANDS SHOWN HEREON.

SCALE: 1-INCH 40 CHAINS

LEGEND

PATENTED LAND	(P)
CROWN LAND SALE	C.S.
LEASES	(L)
LOCATED LAND	Loc.
LICENSE OF OCCUPATION	L.O.
MINING RIGHTS ONLY	M.R.O.
SURFACE RIGHTS ONLY	S.R.O.
ROADS	—
IMPROVED ROADS	—
KING'S HIGHWAYS	—
RAILWAYS	—
POWER LINES	—
MARSH OR MUSKEG	—
MINES	X
CANCELLED	C

NOTES

400' Surface Rights Reservation along the shores of all lakes and rivers.

Roads indicated Ontario-Minnesota Pulp & Paper Co. are private roads but may be used by prospectors only after permission is obtained from the Company office in Kenora.

AREAS WITHDRAWN FROM DISPOSITION

S.R. — SURFACE RIGHTS M.R. — MINING RIGHTS

Description	Order No.	Date	Disposition	File
(R1) MTC Campsite				
(R2) Sec. 34 Sub (d) of Mg. Act Reserved			S R O	163473
(R3) MNR Reserve				123032
(R4) MNR Tower Site				
(R5) MNR Campsite				
(R6) SE 27 75 W-K-60/95		JULY 25/95 SBM 195150		
Effective as per		AUG 23 1984		
liner		7 8 9 10 11 12 1 2 3 4 5 6		
Aug. 23, 1984				

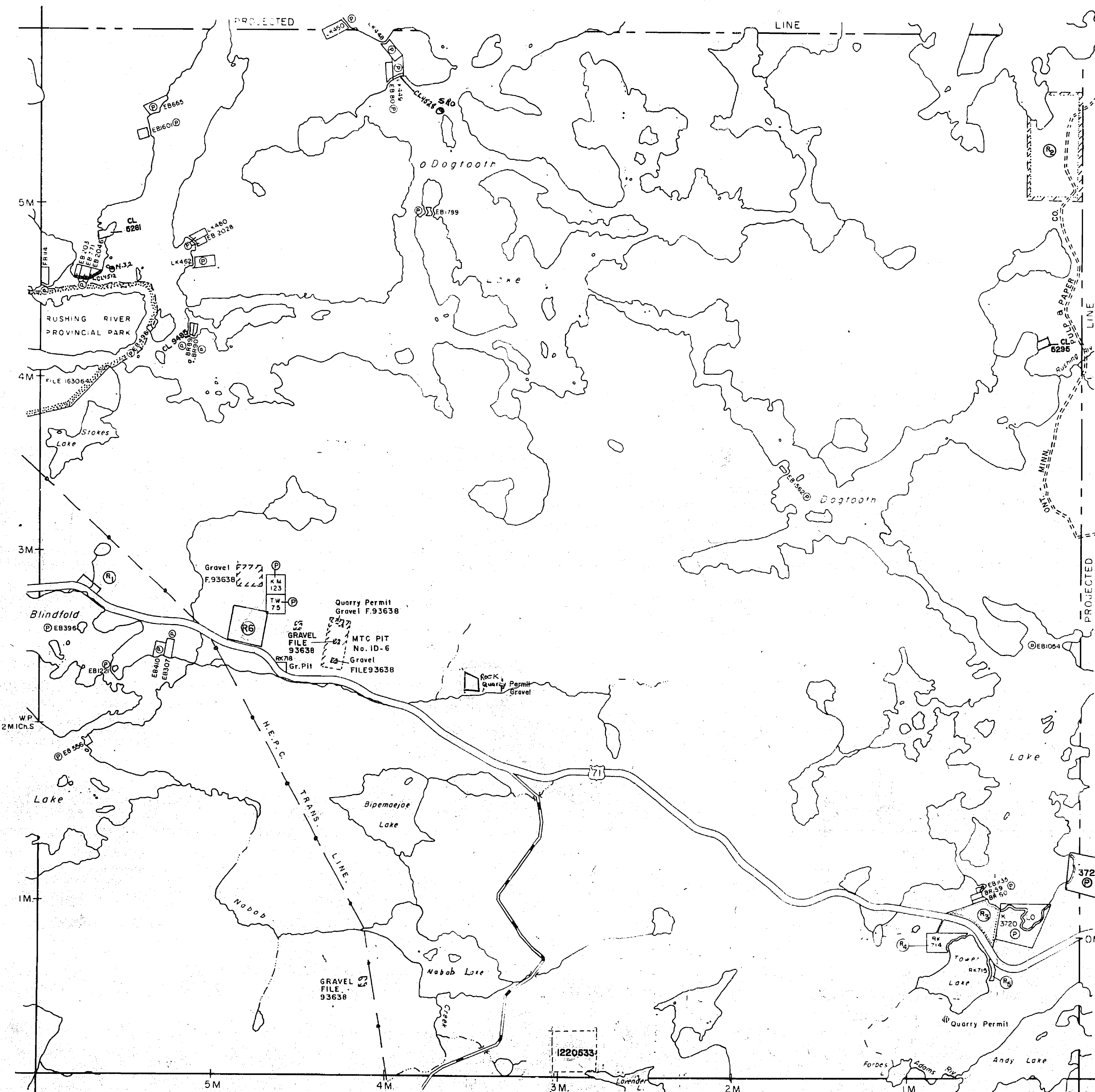
G-1341

PLAN NO. M.184

ONTARIO
MINISTRY OF NATURAL RESOURCES
SURVEYS AND MAPPING BRANCH

G 1339
Kirkup Twp. - M.2809

G 1347
McMeekin Twp. - M.1981



G 1326
Code Twp. - M.1962