

REFERENCES

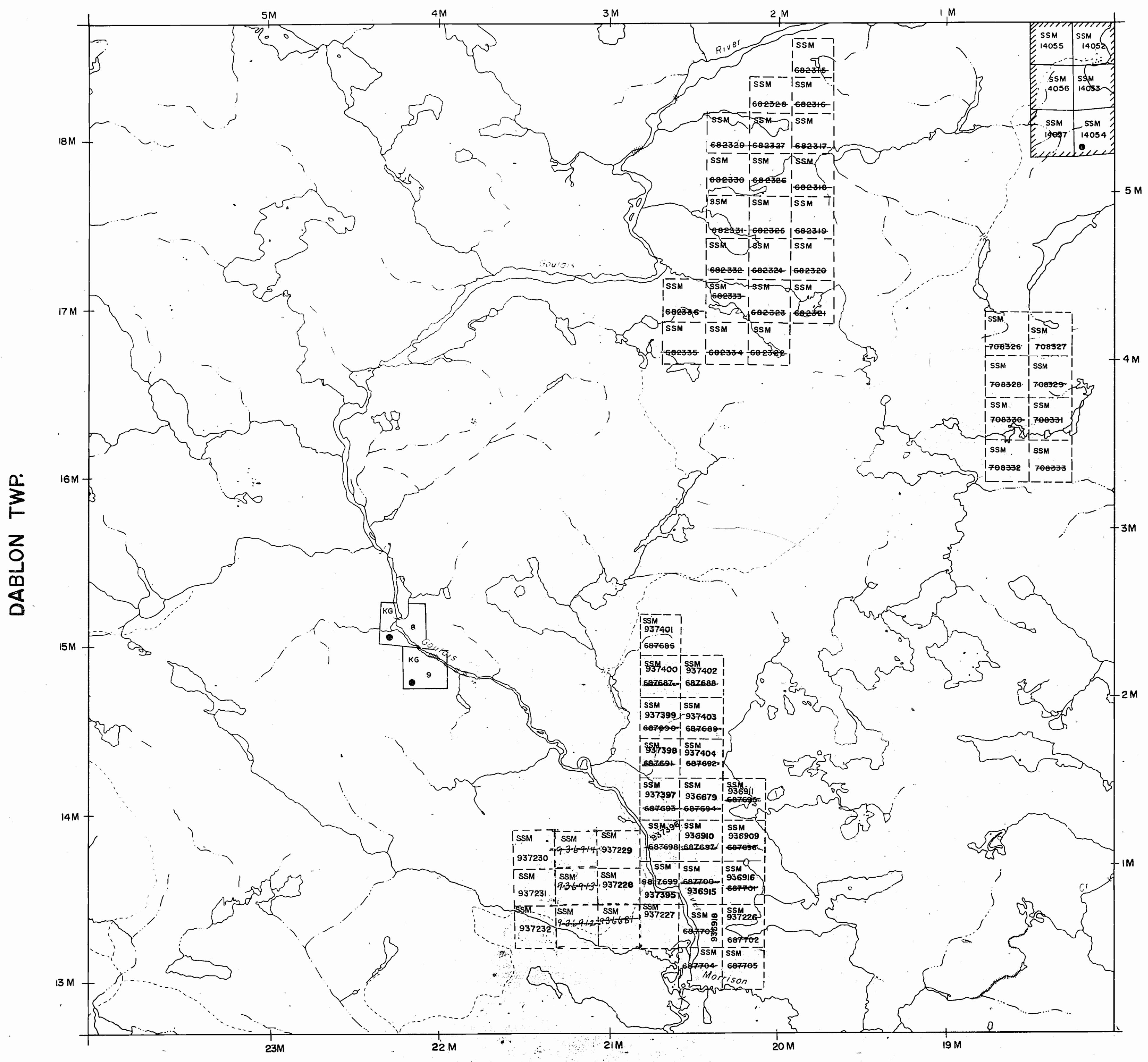
AREAS WITHDRAWN FROM DISPOSITION

- M.R.O. - MINING RIGHTS ONLY
- S.R.O. - SURFACE RIGHTS ONLY
- M.+S. - MINING AND SURFACE RIGHTS

Description Order No. Date Disposition File

Area shown thus patented to Algoma Ore Properties Ltd. File: 129586.

GAPP TWP.



LEGEND

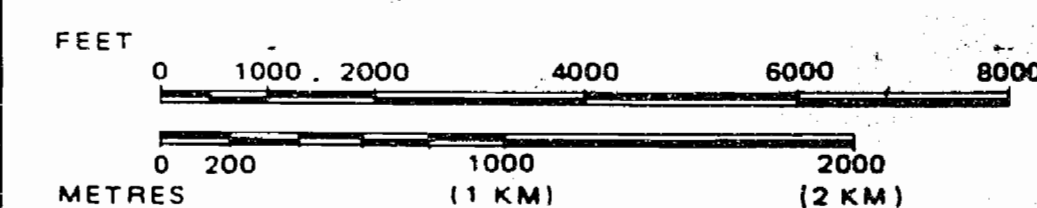
- HIGHWAY AND ROUTE No.
- OTHER ROADS
- TRAILS
- SURVEYED LINES:
 - TOWNSHIPS, BASE LINES, ETC.
 - LOTS, MINING CLAIMS, PARCELS, ETC.
- UNSURVEYED LINES:
 - LOT LINES
 - PARCEL BOUNDARY
 - MINING CLAIMS ETC.
- RAILWAY AND RIGHT OF WAY
- UTILITY LINES
- NON-PERENNIAL STREAM
- FLOODING OR FLOODING RIGHTS
- SUBDIVISION OR COMPOSITE PLAN RESERVATIONS
- ORIGINAL SHORELINE
- MARSH OR MUSKEG
- MINES
- TRAVERSE MONUMENT

DISPOSITION OF CROWN LANDS

TYPE OF DOCUMENT	SYMBOL
PATENT, SURFACE & MINING RIGHTS	
" SURFACE RIGHTS ONLY	
" MINING RIGHTS ONLY	
LEASE, SURFACE & MINING RIGHTS	
" SURFACE RIGHTS ONLY	
" MINING RIGHTS ONLY	
LICENCE OF OCCUPATION	
ORDER-IN-COUNCIL	
RESERVATION	
CANCELLED	
SAND & GRAVEL	

NOTE: MINING RIGHTS IN PARCELS PATENTED PRIOR TO MAY 6, 1913, VESTED IN ORIGINAL PATENTEE BY THE PUBLIC LANDS ACT, R.S.O. 1970, CHAP. 380, SEC. 63, SUBSEC 1.

SCALE: 1 INCH = 40 CHAINS



TOWNSHIP
LUNKIE
 M.N.R. ADMINISTRATIVE DISTRICT
SAULT STE. MARIE
 MINING DIVISION
SAULT STE. MARIE
 LAND TITLES / REGISTRY DIVISION
ALGOMA

Ministry of Natural Resources Land Management Branch

Date MARCH 9, 1983

Number

G-2379

HYNES TWP.

Produced by DBM - Nov. 9/88 CK

LUNKIE TP.

(T_p 23 R12)

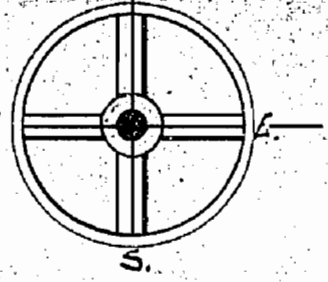
M147
G-2379

DATE OF ISSUE
AUG 19 1915

DISTRICT OF ALGOMA. SAULT STE. MARIE MINING DIVISION.

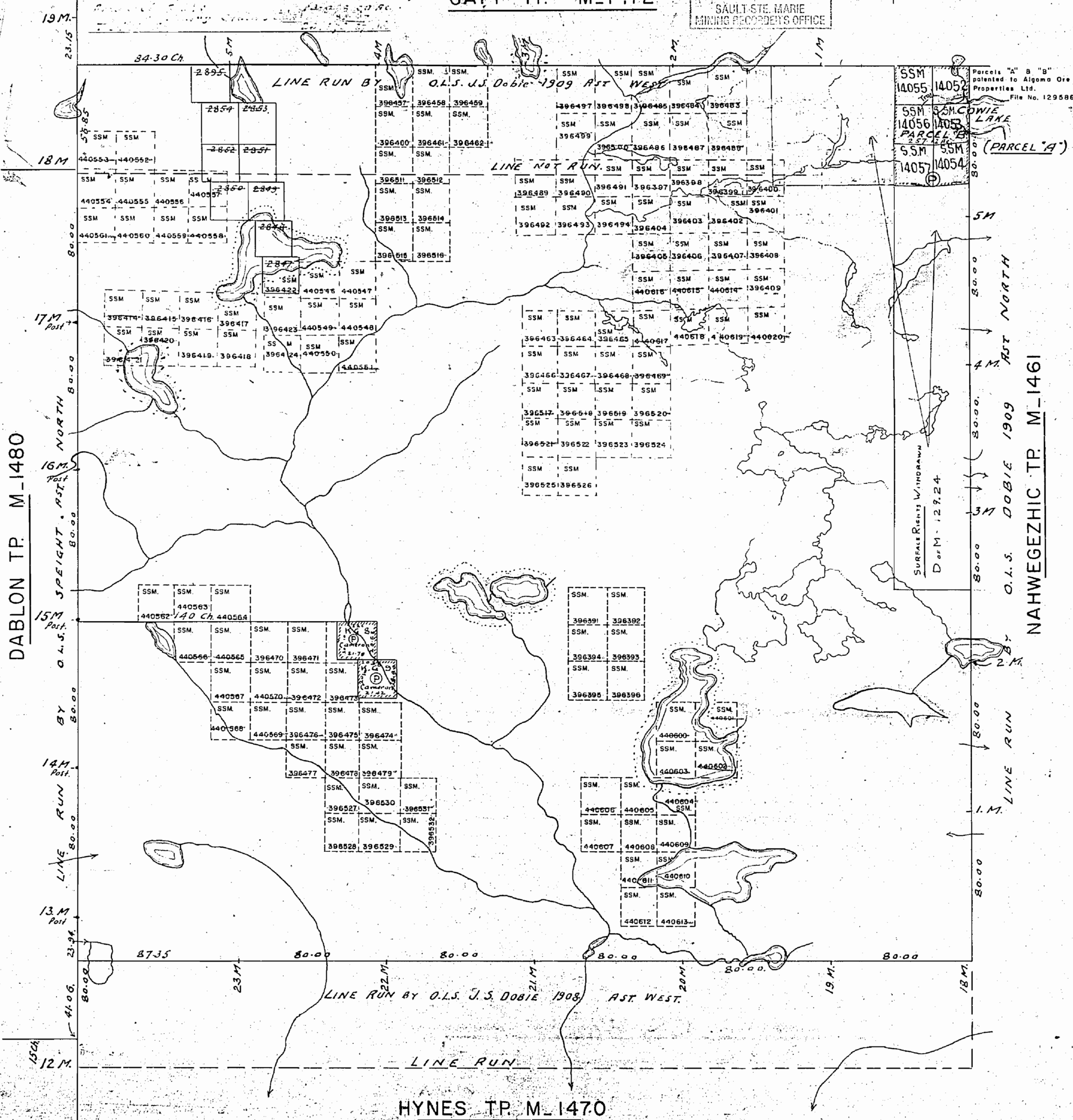
Scale, 40 chains to an inch.

DATE OF ISSUE
AUG 28 1915
SAULT STE. MARIE
MINING RECORDER'S OFFICE



Note - This Twp is covered by
Unspecified PT Permit No. 7001
Waldwood of Canada Ltd. (see
File for details)

GAPP TP. M-1472



400' SURFACE RIGHTS RESERVATION AROUND ALL LAKES & RIVERS.

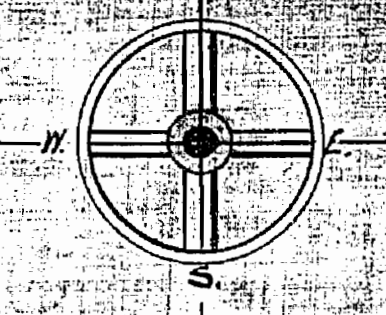
Boundary Lines as shown by solid lines
corrected from notes supplied by The Dept. of
Lands, Forests and Mines

Nov. 23rd 1918.

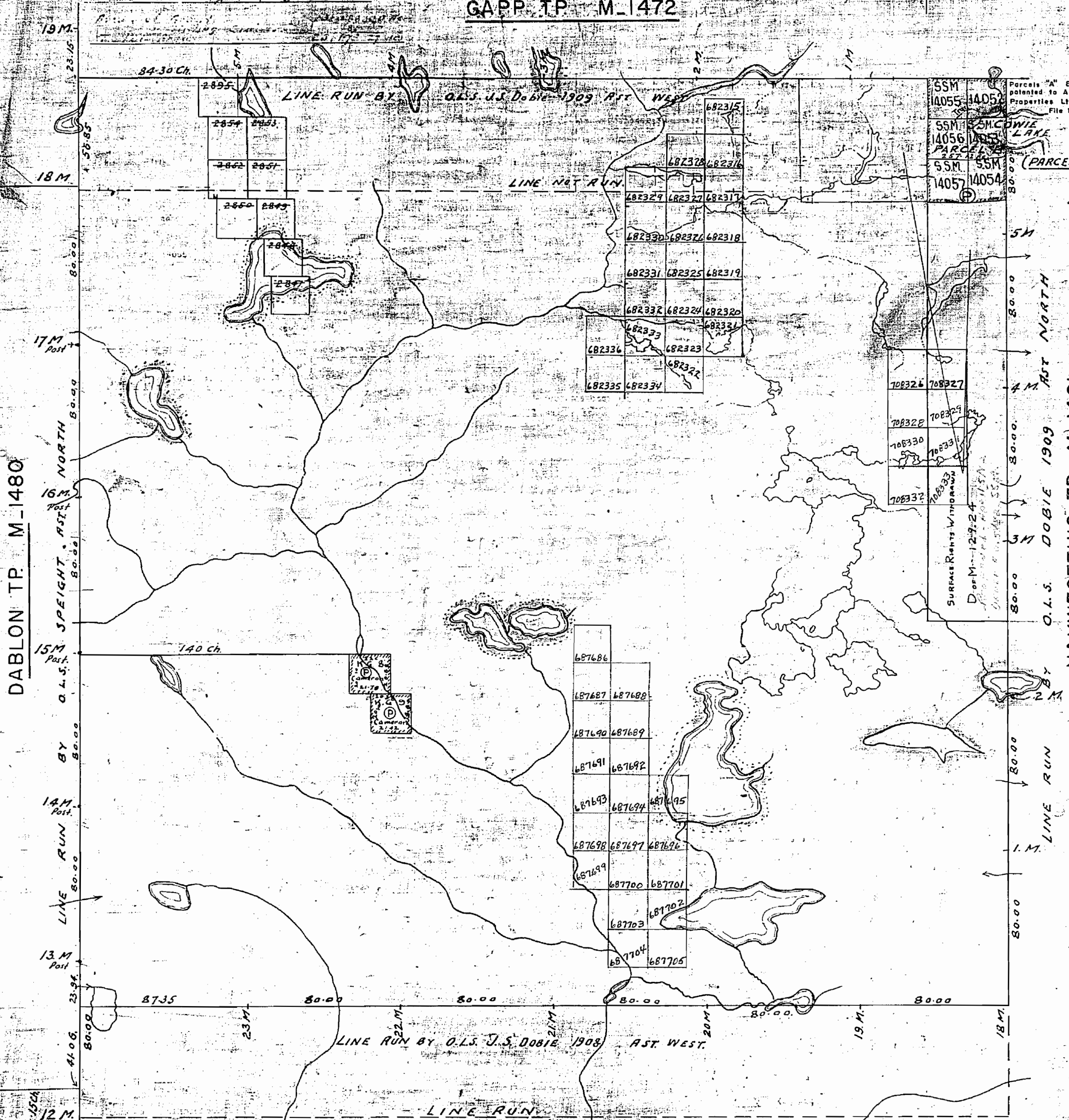
6237

RECEIVED
JAN 20 1918

DISTRICT OF ALGOMA.
SAULT STE. MARIE MINING DIVISION.
Scale, 40 chains to an inch.



GAPP TP. M-1472



DABLON TP. M-1480

NAHWEGEZHIC TP. M-1461

HYNES TP. M-1470

NOTE: This township covered by an
Unsurveyed Forest M.P. permit No 15177-82.
See also map of CAN. LTD.

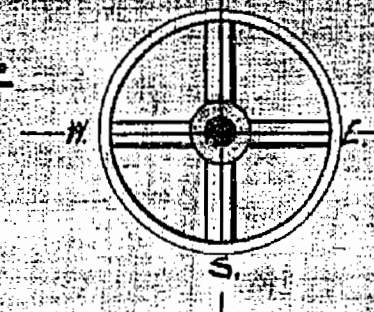
SURFACE RIGHTS RESERVATION AROUND ALL LAKES & RIVERS

Boundary Lines as shown by solid lines
corrected from notes supplied by The Dept. of
Lands, Forests and Mines
Nov. 23rd 1918

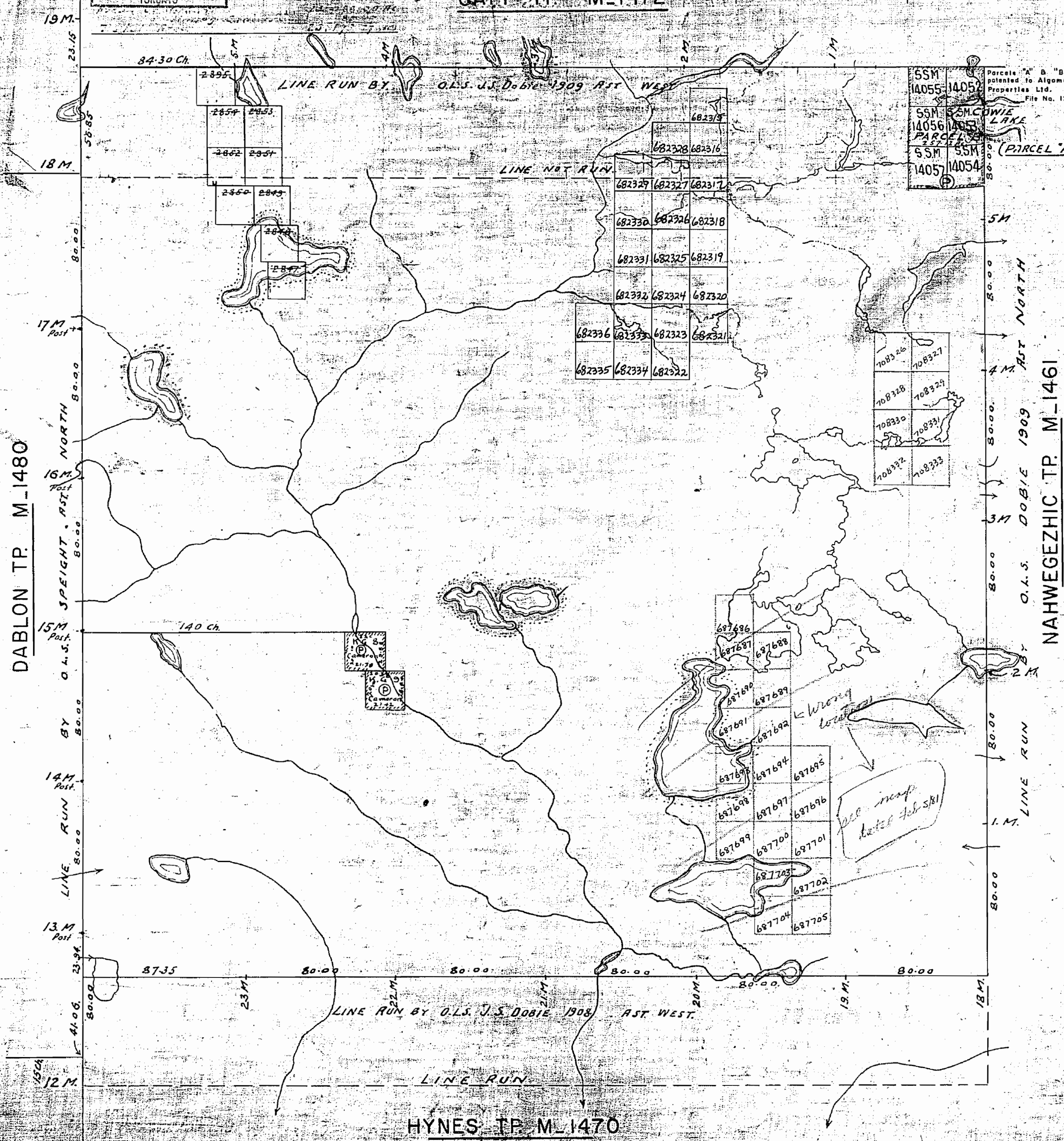
6-2374

DISTRICT OF ALGOMA
SAULT STE. MARIE MINING DIVISION.
Scale, 40 chains to an inch.

DATE OF ISSUE
MAY 12 1932
Ministry of Natural Resources
TORONTO



GAPP TP. M-1472



55M 14055 14052
55M 14056 14053
55M 14057 14054
Parcels "A" & "B" patented to Algoma Ore Properties Ltd. File No. 129586
S.M. COWIE LAKE
(PARCEL "A")

DABLON TP. M-1480

NAHWEGEZIC TP. M-1461

HYNES TP. M-1470

400' SURFACE RIGHTS RESERVATION AROUND ALL LAKES & RIVERS

Boundary Lines as shown by solid lines corrected from notes supplied by The Dept. of Lands, Forests and Mines
May 23rd 1932

REFERENCES

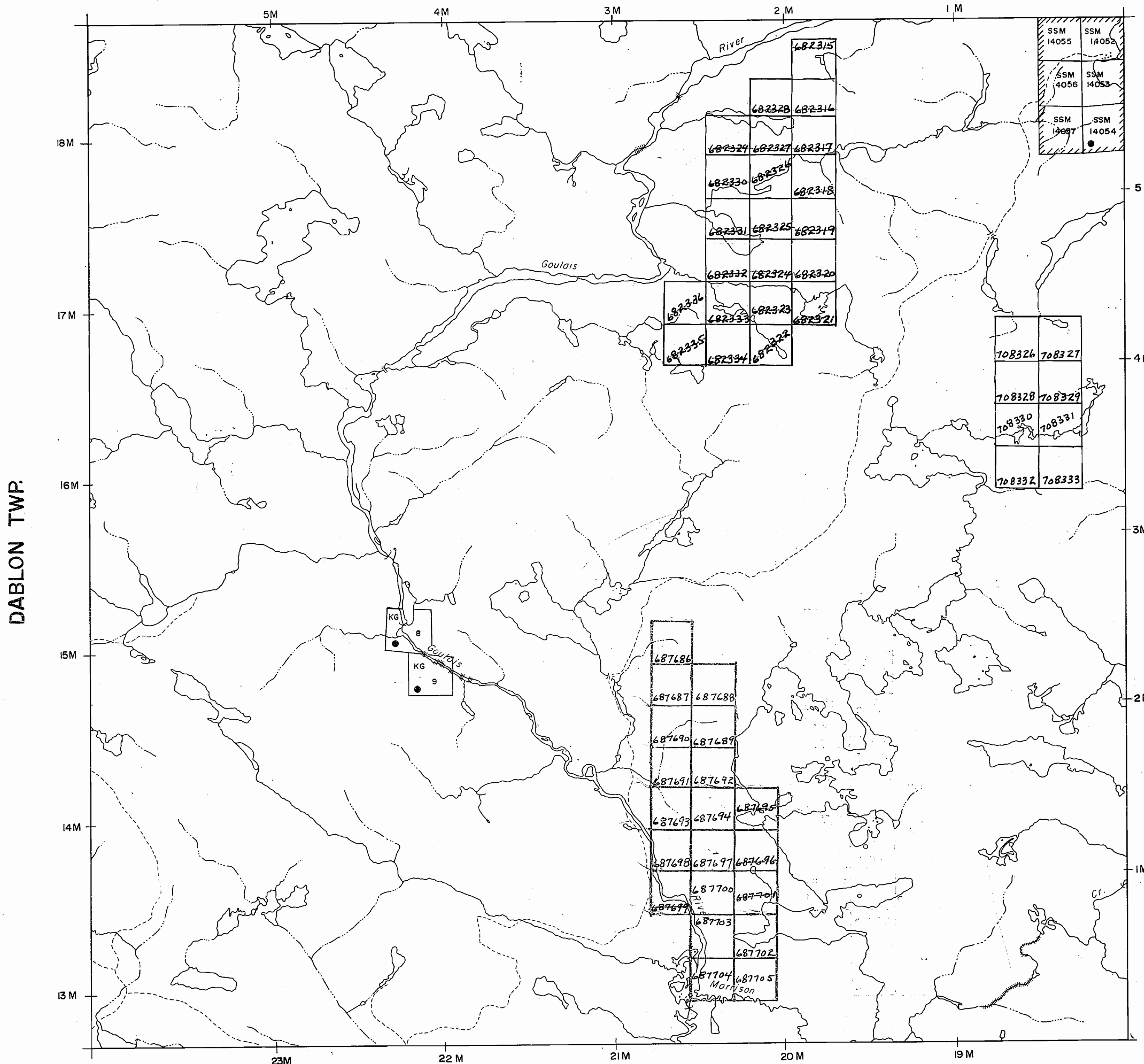
AREAS WITHDRAWN FROM DISPOSITION

- M.R.O. — MINING RIGHTS ONLY
- S.R.O. — SURFACE RIGHTS ONLY
- M.+S. — MINING AND SURFACE RIGHTS

Description Order No. Date Disposition File

Area shown thus patented to Algoma Ore Properties Ltd. File: I29586.

GAPP TWP.



LEGEND

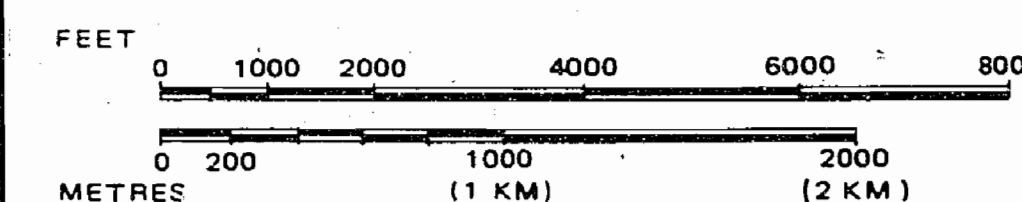
- HIGHWAY AND ROUTE No.
- OTHER ROADS
- TRAILS
- SURVEYED LINES:
 - TOWNSHIPS, BASE LINES, ETC.
 - LOTS, MINING CLAIMS, PARCELS, ETC.
- UNSURVEYED LINES:
 - LOT LINES
 - PARCEL BOUNDARY
 - MINING CLAIMS ETC.
- RAILWAY AND RIGHT OF WAY
- UTILITY LINES
- NON-PERENNIAL STREAM
- FLOODING OR FLOODING RIGHTS
- SUBDIVISION OR COMPOSITE PLAN
- RESERVATIONS
- ORIGINAL SHORELINE
- MARSH OR MUSKEG
- MINES
- TRAVERSE MONUMENT

DISPOSITION OF CROWN LANDS

TYPE OF DOCUMENT	SYMBOL
PATENT, SURFACE & MINING RIGHTS	
" SURFACE RIGHTS ONLY	
" MINING RIGHTS ONLY	
LEASE, SURFACE & MINING RIGHTS	
" SURFACE RIGHTS ONLY	
" MINING RIGHTS ONLY	
LICENCE OF OCCUPATION	
ORDER-IN-COUNCIL	
RESERVATION	
CANCELLED	
SAND & GRAVEL	

NOTE: MINING RIGHTS IN PARCELS PATENTED PRIOR TO MAY 6, 1913, VESTED IN ORIGINAL PATENTEE BY THE PUBLIC LANDS ACT, R.S.O. 1970, CHAP. 380, SEC. 63, SUBSEC 1.

SCALE: 1 INCH = 40 CHAINS



TOWNSHIP
LUNKIE
M.N.R. ADMINISTRATIVE DISTRICT
SAULT STE. MARIE
MINING DIVISION
SAULT STE. MARIE
LAND TITLES / REGISTRY DIVISION
ALGOMA

Ministry of Land Management
Natural Resources Branch
Ontario

Date MARCH 9, 1983

Number

G-2379

SAULT STE. MARIE
MINING DIV.
RECEIVED
OCT 5 - 1984
A.M. P.M.
7 8 9 10 11 12 1 2 3 4 5 6

RECEIVED
MAY 24 1983
A.M. P.M.
7 8 9 10 11 12 1 2 3 4 5 6

replaced by new milar



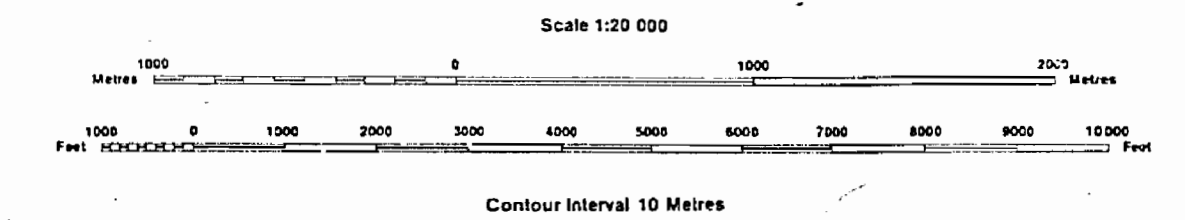
Ministry of Natural Resources
Ministry of Northern Development and Mines

INDEX TO LAND DISPOSITION

PLAN
G-2379
TOWNSHIP

M.N.R. ADMINISTRATIVE DISTRICT
SAULT STE. MARIE
MINING DIVISION
SAULT STE. MARIE
LAND TITLES/REGISTRY DIVISION
ALGOMA

LUNKIE



AREAS WITHDRAWN FROM DISPOSITION

- MRO - Mining Rights Only
- SRO - Surface Rights Only
- M+S - Mining and Surface Rights

SYMBOLS

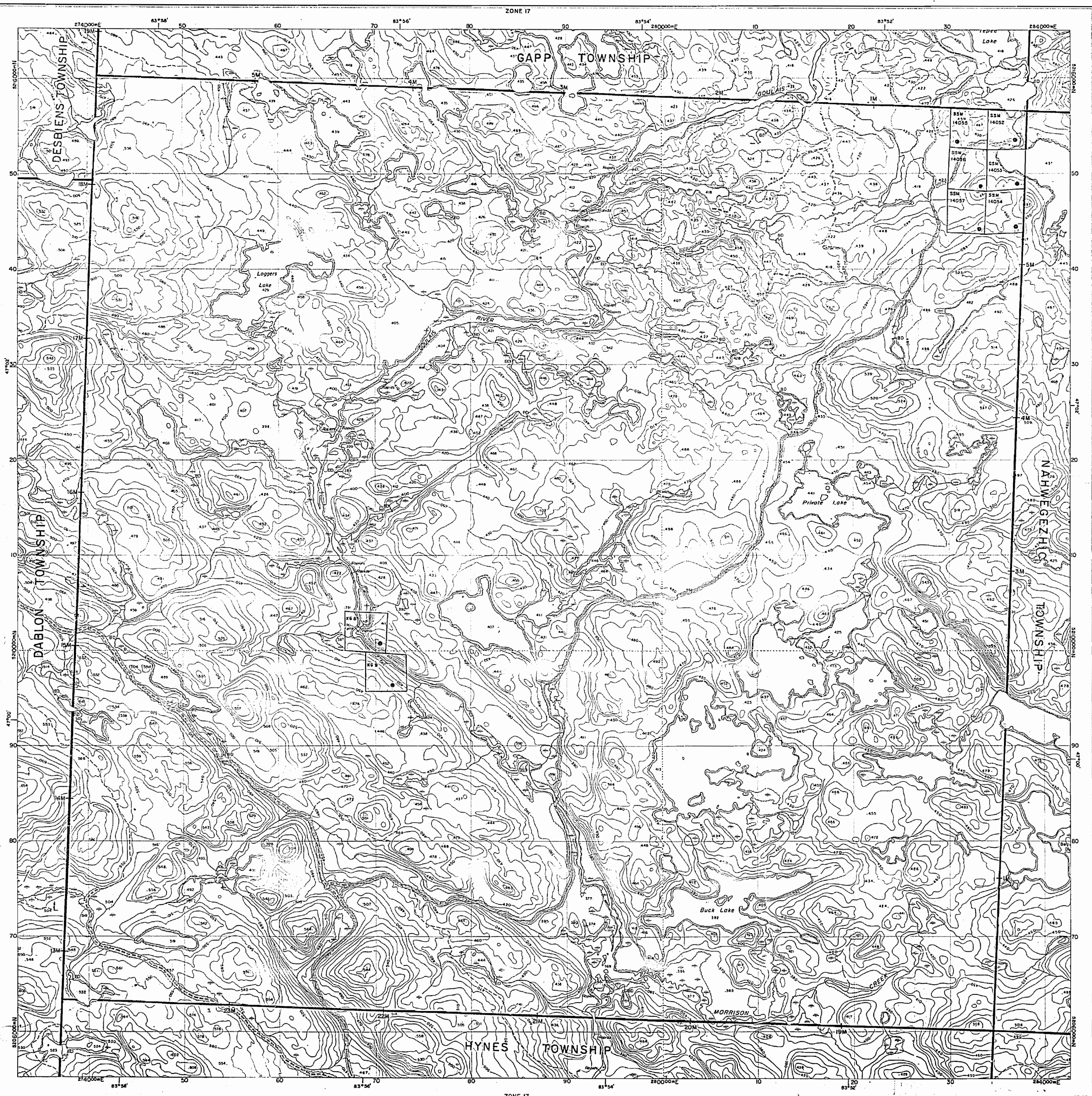
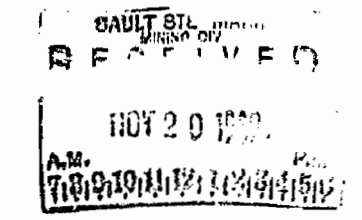
Description	Order No.	Date	Disposition	File
Boundary				
Township, Meridian, Baseline				
Road allowance; surveyed				
shoreline				
Lot/Concession; surveyed				
unsurveyed				
Parcel; surveyed				
unsurveyed				
Right-of-way; road				
railway				
utility				
Interpolation				
Cliff, Pit, Pile				
Contour				
Interpolated				
Approximate				
Depression				
Control point (horizontal)				
Flooded land				
Mine head frame				
Pipeline (above ground)				
Railway; single track				
double track				
abandoned				
Road; highway, county, township				
access				
trail, bush				
Shoreline (original)				
Transmission line				
Wooded area				

The 1975 Magnetic Bearing
Approx. 5°30' W. Annual Change
Increasing 2'

DISPOSITION OF CROWN LANDS

Patent	
Surface & Mining Rights	●
Surface Rights Only	○
Mining Rights Only	○
Lease	
Surface & Mining Rights	■
Surface Rights Only	□
Mining Rights Only	□
Licence of Occupation	▼
Order-in-Council	OC
Cancelled	○
Reservation	○
Sand & Gravel	○

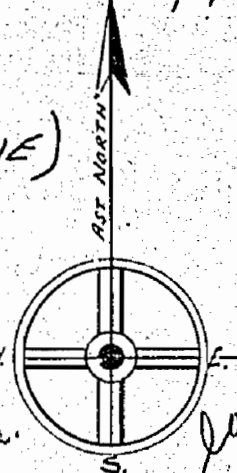
THE INFORMATION THAT APPEARS ON THIS MAP HAS BEEN COMPILED FROM VARIOUS SOURCES, AND ACCURACY IS NOT GUARANTEED. THOSE WISHING TO STAKE MINING CLAIMS SHOULD CONSULT WITH THE MINING RECORDER, MINISTRY OF NORTHERN DEVELOPMENT AND MINES, FOR ADDITIONAL INFORMATION ON THE STATUS OF THE LANDS SHOWN HEREON.



TP. 23. RANGE 12. (LUNKIE)

DISTRICT OF ALGOMA.
SAULT STE. MARIE MINING DIVISION.

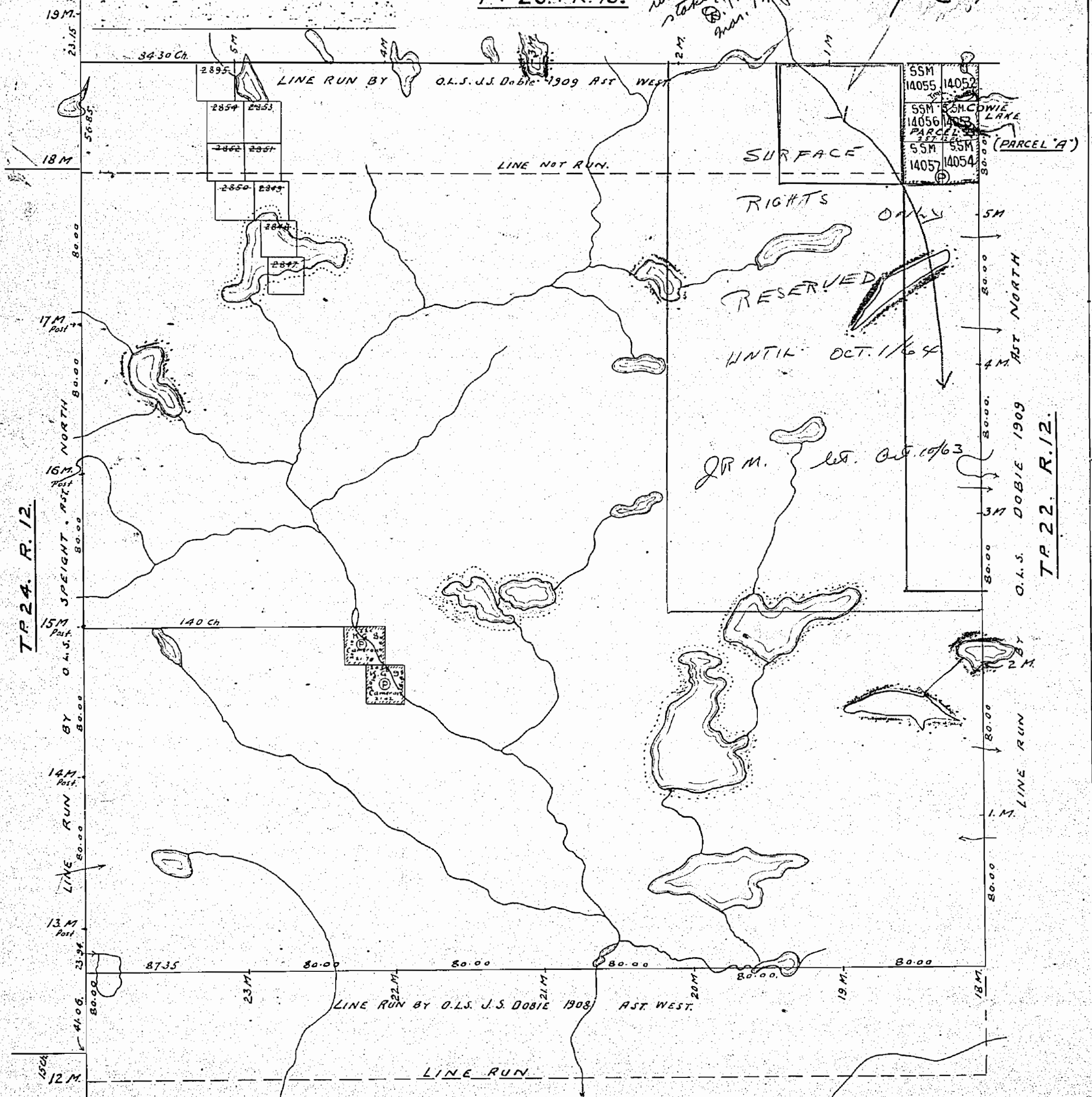
Scale, 40 chains to an inch.



*Area in blue
Surface Rights only
withdrawn from
staking Douglas etc
P. P. Douglas
Jan. 17/65
R. U.S. file.*

*no R. V. S. applies
19/64*

TR 23. R. 13.



TR 24. R. 12.

TR 22. R. 12.

Surface reservations 400' wide by Dept of L. & F. shown hereon thus

TR 23. R. 11.

Boundary Lines as shown by solid lines corrected from notes supplied by The Dept. of Lands, Forests and Mines
Nov. 23rd 1918.

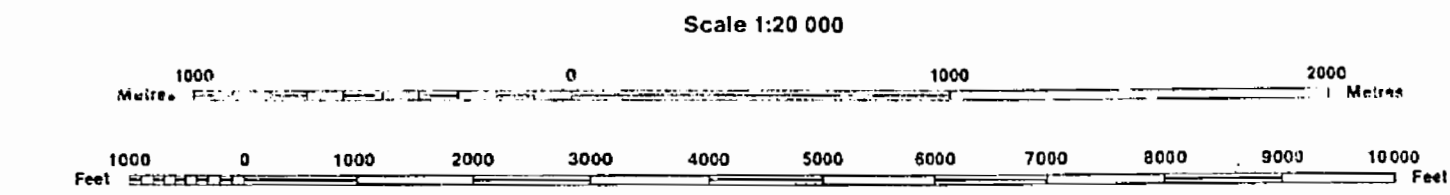


INDEX TO LAND DISPOSITION

PLAN
G-2379
 TOWNSHIP

M.N.R. ADMINISTRATIVE DISTRICT
SAULT STE. MARIE
 MINING DIVISION
SAULT STE. MARIE
 LAND TITLES/REGISTRY DIVISION
ALGOMA

LUNKIE



Contour Interval 10 Metres

AREAS WITHDRAWN FROM DISPOSITION

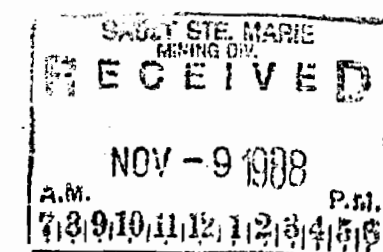
MRO - Mining Rights Only
 SRO - Surface Rights Only
 M+S - Mining and Surface Rights

SYMBOLS

Description	Order No.	Date	Disposition	File
Boundary				
Township, Meridian, Baseline				
Road allowance; surveyed				
shoreline				
Lot/Concession; surveyed				
unsurveyed				
Parcel; surveyed				
unsurveyed				
Right-of-way; road				
railway				
utility				
Reservation				
Cliff, Pit, Pile				
Contour				
Interpolated				
Approximate				
Depression				
Control point (horizontal)				
Flooded land				
Mine head frame				
Pipeline (above ground)				
Railway; single track				
double track				
abandoned				
Road; highway, county, township				
access				
trail, bush				
Shoreline (original)				
Transmission line				
Wooded area				

DISPOSITION OF CROWN LANDS

Patent	
Surface & Mining Rights	○
Surface Rights Only	○
Mining Rights Only	○
Lease	
Surface & Mining Rights	■
Surface Rights Only	■
Mining Rights Only	■
Licence of Occupation	▽
Order-in-Council	OC
Cancelled	⊙
Reservation	⊙
Sand & Gravel	⊙



Updated by new system Nov. 2017

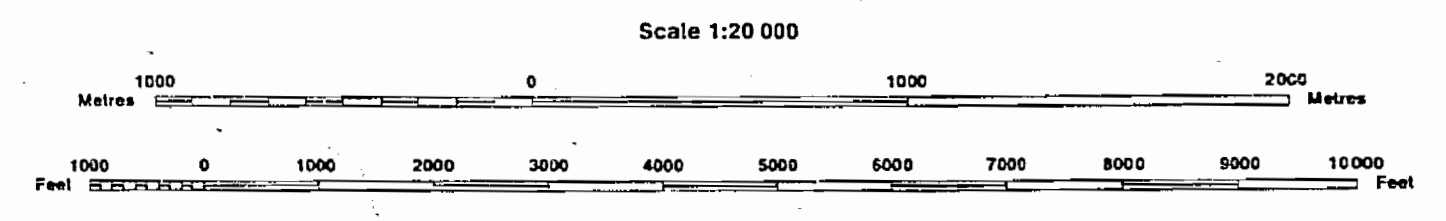


INDEX TO LAND DISPOSITION

PLAN
G-2379
 TOWNSHIP

M.N.R. ADMINISTRATIVE DISTRICT
SAULT STE. MARIE
 MINING DIVISION
SAULT STE. MARIE
 LAND TITLES/REGISTRY DIVISION
ALGOMA

LUNKIE



AREAS WITHDRAWN FROM DISPOSITION

- MRO - Mining Rights Only
- SRO - Surface Rights Only
- M + S - Mining and Surface Rights

SYMBOLS

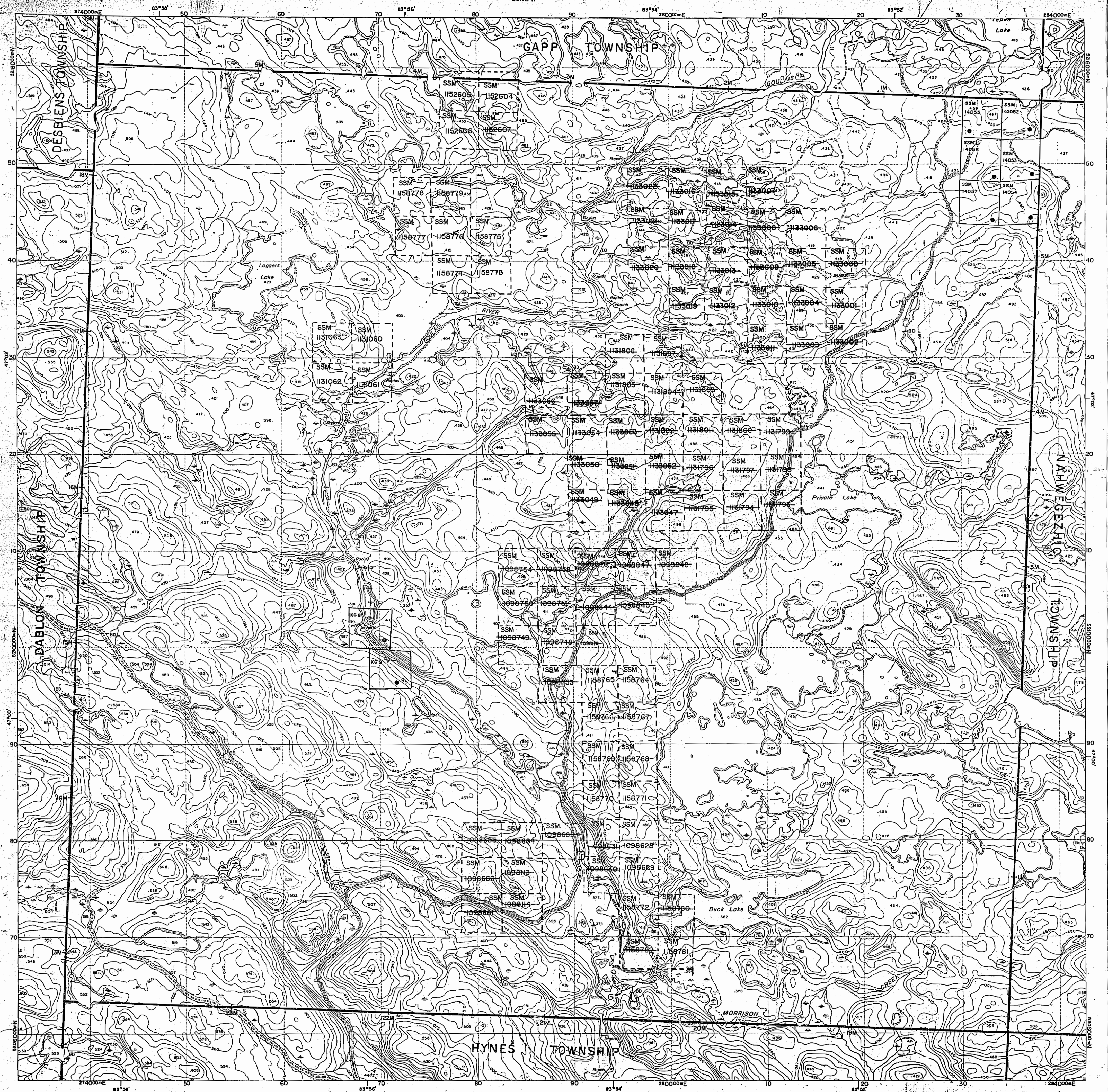
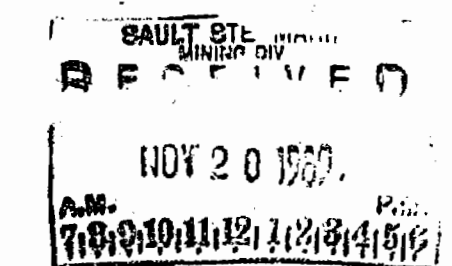
Description	Order No.	Date	Disposition	File
Boundary				
Township, Meridian, Baseline				
Road allowance; surveyed				
shoreline				
Lot/Concession; surveyed				
unsurveyed				
Parcel; surveyed				
unsurveyed				
Right-of-way; road				
railway				
utility				
Reservation				
Cliff, Pit, Pile				
Contour				
Interpolated				
Approximate				
Depression				
Control point (horizontal)				
Flooded land				
Mine head frame				
Pipeline (above ground)				
Railway; single track				
double track				
abandoned				
Road; highway, county, township				
access				
trail, bush				
Shoreline (original)				
Transmission line				
Wooded area				

The 1975 Magnetic Bearing
 Approx. 5.32% Annual Change
 Increasing 97

DISPOSITION OF CROWN LANDS

Patent	
Surface & Mining Rights	●
Surface Rights Only	○
Mining Rights Only	◐
Lease	
Surface & Mining Rights	■
Surface Rights Only	□
Mining Rights Only	◻
Licence of Occupation	▽
Order-in-Council	∇
Cancelled	⊙
Reservation	⊖
Sand & Gravel	⊕

THE INFORMATION THAT
 APPEARS ON THIS MAP
 HAS BEEN COMPILED
 FROM VARIOUS SOURCES,
 AND ACCURACY IS NOT
 GUARANTEED. THOSE
 WISHING TO STAKE MIN-
 ING CLAIMS SHOULD CON-
 SULT WITH THE MINING
 RECORDER, MINISTRY OF
 NORTHERN DEVELOP-
 MENT AND MINES, FOR AD-
 DITIONAL INFORMATION
 ON THE STATUS OF THE
 LANDS SHOWN HEREON.



1471

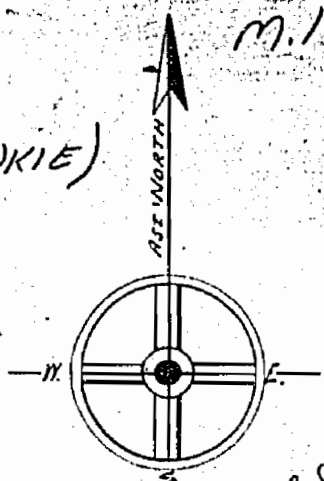
1MB 52 B 15 W 14 S 1

M. 1471

TP. 23. RANGE 12. (LUNKIE)

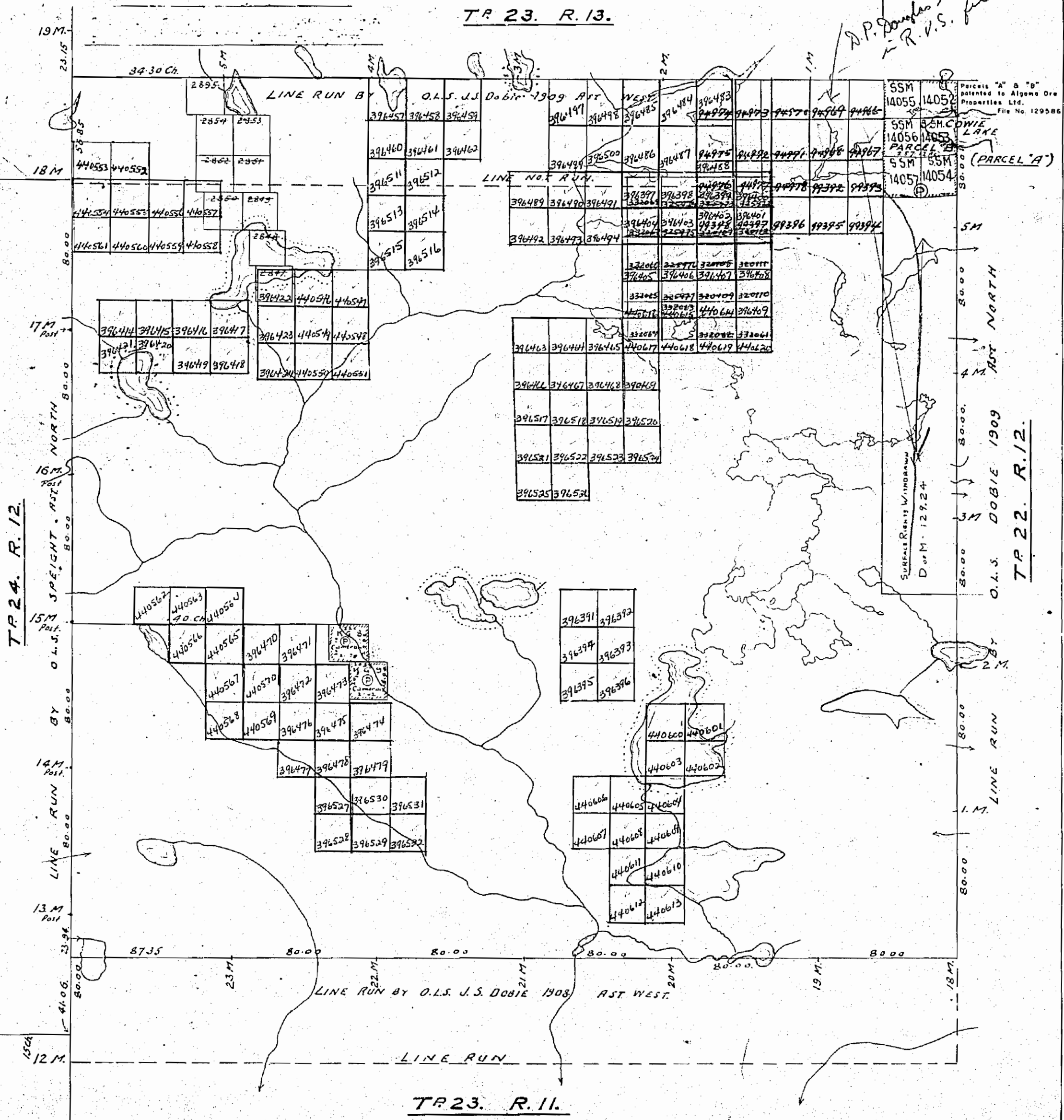
DISTRICT OF ALGOMA. SAULT STE. MARIE MINING DIVISION.

Scale, 40 chains to an inch.



*A.P. Douglas Les. from 1/2/65
R.V.S. file*

TR 23. R. 13.



TR 24. R. 12.

TR 22. R. 12.

400' SURFACE RIGHTS RESERVATION AROUND ALL LAKES & RIVERS.

Boundary Lines as shown by solid lines corrected from notes supplied by the Dept. of Lands, Forests and Mines
Nov. 23rd 1918.

1471

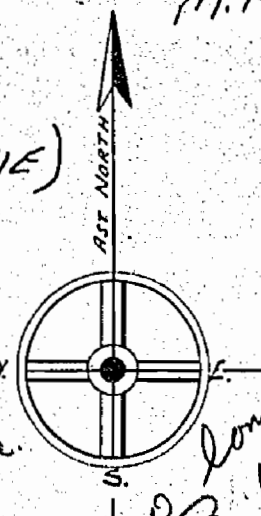
1MB 52 B15 W 1451

M. 1471

TP. 23. RANGE 12. (LUNKIE)

DISTRICT OF ALGOMA. SAULT STE. MARIE MINING DIVISION.

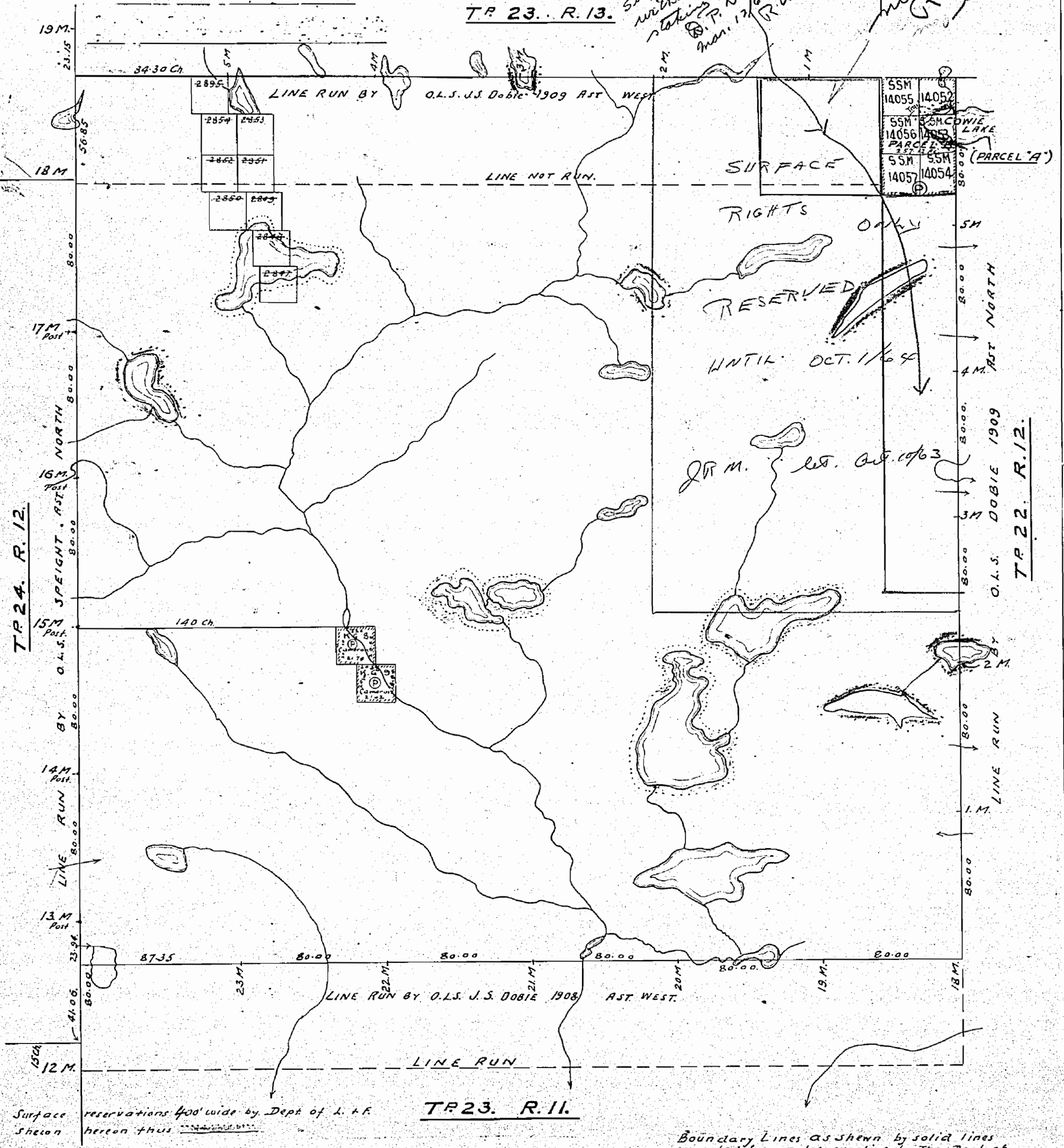
Scale, 40 chains to an inch.



*Area in blue
Surface Rights only
not shown from
stakings. Douglas
B.P. man. 12/65
R.U.S. file.*

*no longer applies
V.S. Oct 19/64*

TR 23. R. 13.



TR 24. R. 12.

BY O.L.S. SPEIGHT. AST. NORTH

BY O.L.S. J.S. DOBIE 1909

LINE RUN BY

LINE RUN

LINE RUN

TR 23. R. 11.

Surface reservations 400' wide by Dept of L. & F. hereon thus

Boundary Lines as Shewn by solid lines corrected from notes supplied by The Dept. of Lands, Forests and Mines
Nov. 23rd 1918.

