

LEGEND

CANCELLED
PATENTED LAND
CROWN LAND SALE
LEASES
LOCATED LAND
LICENSE OF OCCUPATION
MINING RIGHTS ONLY
SURFACE RIGHTS ONLY

C.
C.
C.S.
C.
LOC.
L.O.
M.R.O.
S.R.O.

MATAWATCHAN

Scale: 40 Chains = 1 Inch
GRIFFITH

MINING LANDS
DATE OF ISSUE
JAN 11 1973
MINISTRY
OF NATURAL RESOURCES

NOTE

AREAS OUTLINED THUS
ARE IN THE EASTERN
PROVINCIAL FOREST
(LEASES ONLY)

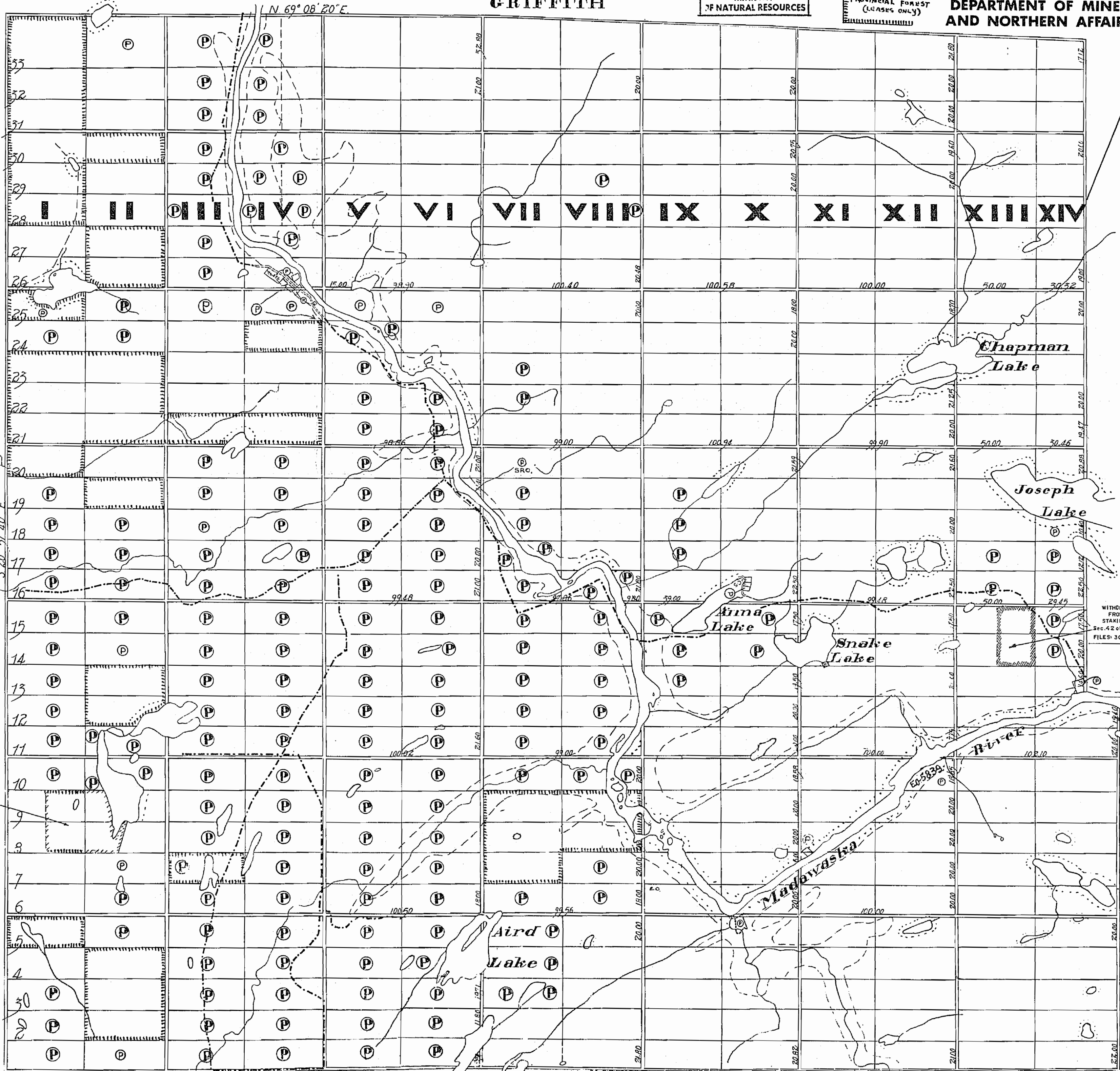
M. 123
ONTARIO

DEPARTMENT OF MINES
AND NORTHERN AFFAIRS

DENBIGH

BROUGHAM

CANANTO N.



NOTES

400' surface rights reservation along the shores
of all lakes and rivers.

MILLER

Flooding Rights to contours 817 Reserve to H.E.R.C.

WITHDRAWN
FROM
STAKING
Sec. 42 of the Mining Act,
FILES: 30889 & 62499

LEGEND

CANCELLED
PATENTED LAND
CROWN LAND SALE
LEASES
LOCATED LAND
LICENSE OF OCCUPATION
MINING RIGHTS ONLY
SURFACE RIGHTS ONLY

C.
P.
C.S.
D.
LOC.
L.O.
M.R.O.
S.R.O.

MATAWATCHAN

ONTARIO
MINISTRY OF NATURAL RESOURCES
SURVEYS AND MAPPING BRANCH

Scale: 40 Chains = 1 Inch
GRIFFITH

MINING LANDS
DATE OF ISSUE
NOV 19 1975
MINISTRY
OF NATURAL RESOURCES

NOTE

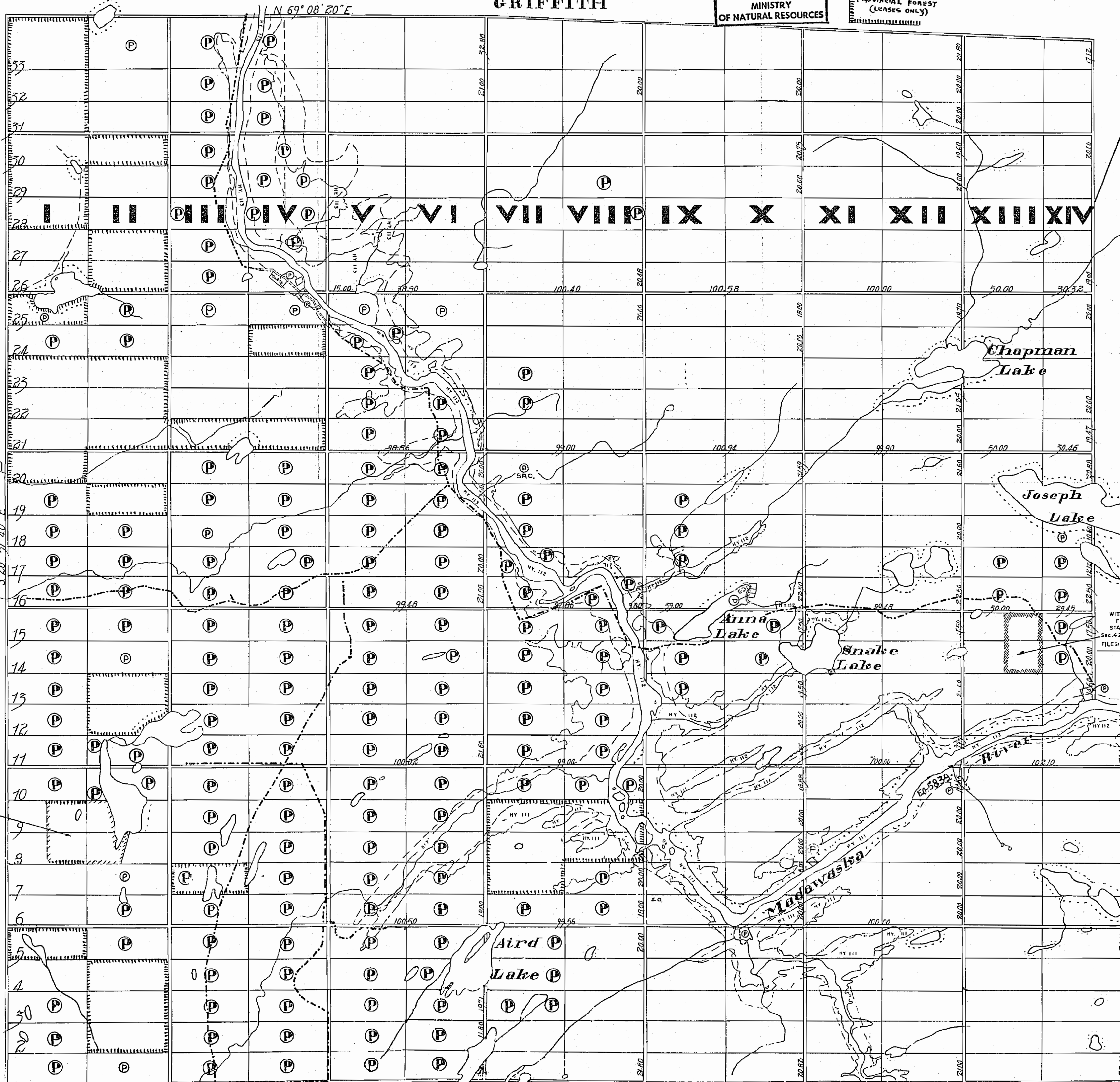
AREAS OUTLINED THUS
ARE IN THE EASTERN
PROVINCIAL FOREST
(LEASES ONLY)

M. 123

DENBIGH

BROUGHAM

CANANTO N.



NOTES

400' surface rights reservation along the shores of all lakes and rivers.

HY. 111, 112, 113 flooding to 817' G.S.C. covered by W.P.L.A. No 79. File: 83053.

MILLER

Flooding Rights to contours 817 Reserve to H.E.P.C. of Ont.

WITHDRAWN FROM STAKING Sec. 42 of the Mining Act. FILES: 30869 & 62499

LEGEND
CANCELLED
PATENTED LAND
CROWN LAND SALE
LEASES
LOCATED LAND
LICENSE OF OCCUPATION
MINING RIGHTS ONLY
SURFACE RIGHTS ONLY
C.
P.
C.S.
L.O.
M.R.O.
S.R.O.

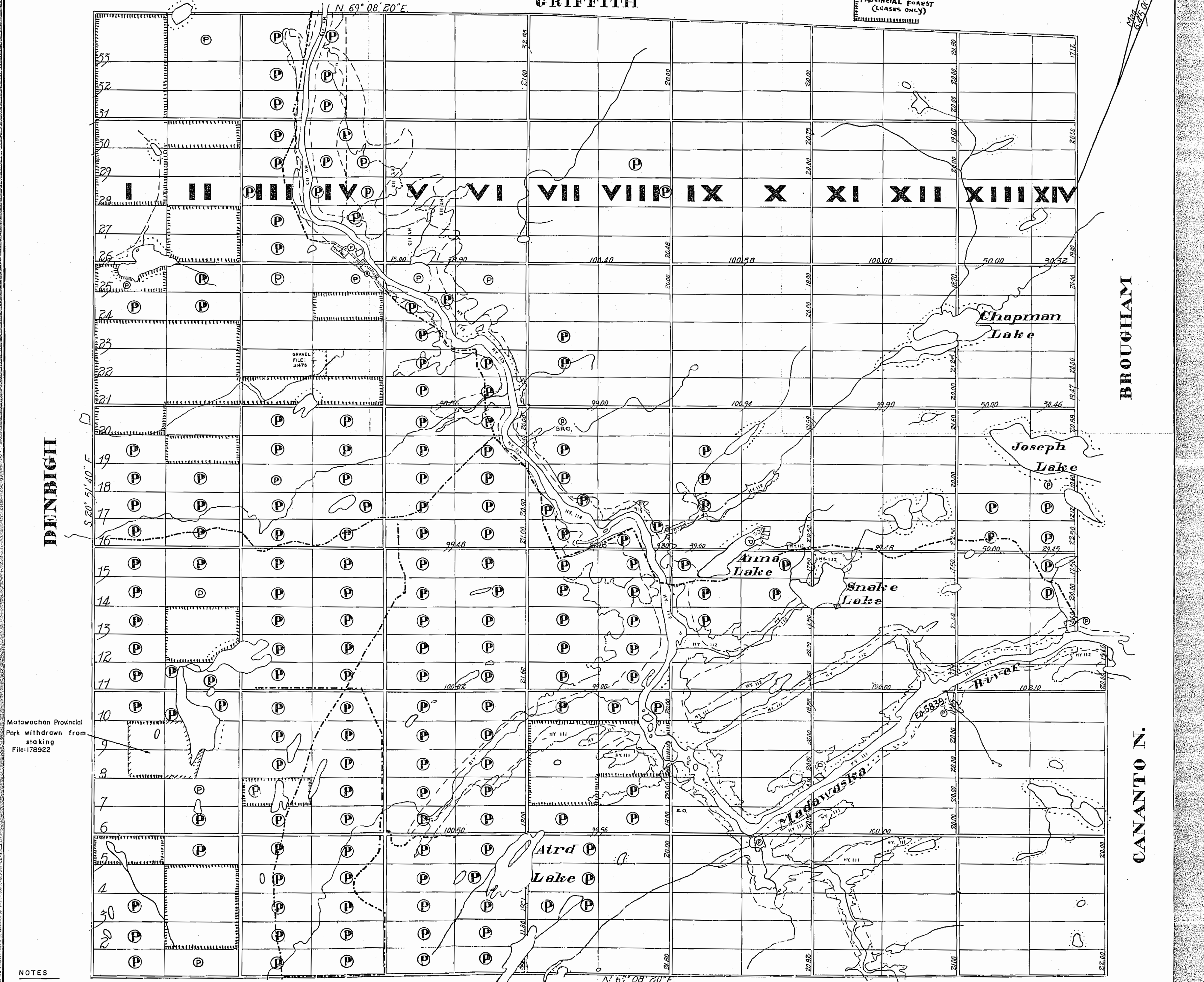
MATAWATCHAN

DATE OF ISSUE
JUL 31 1980
SURVEYS AND MAPPING
BRANCH

ONTARIO
MINISTRY OF NATURAL RESOURCES
SURVEYS AND MAPPING BRANCH

M-123
Scale: 40 Chains = 1 Inch
GRIFFITH

NOTE
AREAS OUTLINED THIS
MANNER ARE IN THE EASTERN
PROVINCIAL FOREST
(LEASES ONLY)
M.123



Matawatchan Provincial
Park withdrawn from
staking
File: 178922

NOTES
400' surface rights reservation along the shores
of all lakes and rivers.
HY. III, II2, II3 flooding to 817' G.S.C. covered by
W.P.L.A. No 79. File: 83053.

MILLER Flooding Rights to contours 817 Reserve to H.E.P.C
of Ont.



LEGEND
CANCELLED
PATENTED LAND
CROWN LAND SALE
LEASES
LOCATED LAND
LICENSE OF OCCUPATION
MINING RIGHTS ONLY
SURFACE RIGHTS ONLY

C.
©
C.S.
©
LOC.
L.O.
M.R.O.
S.R.O.

MATAWATCHAN

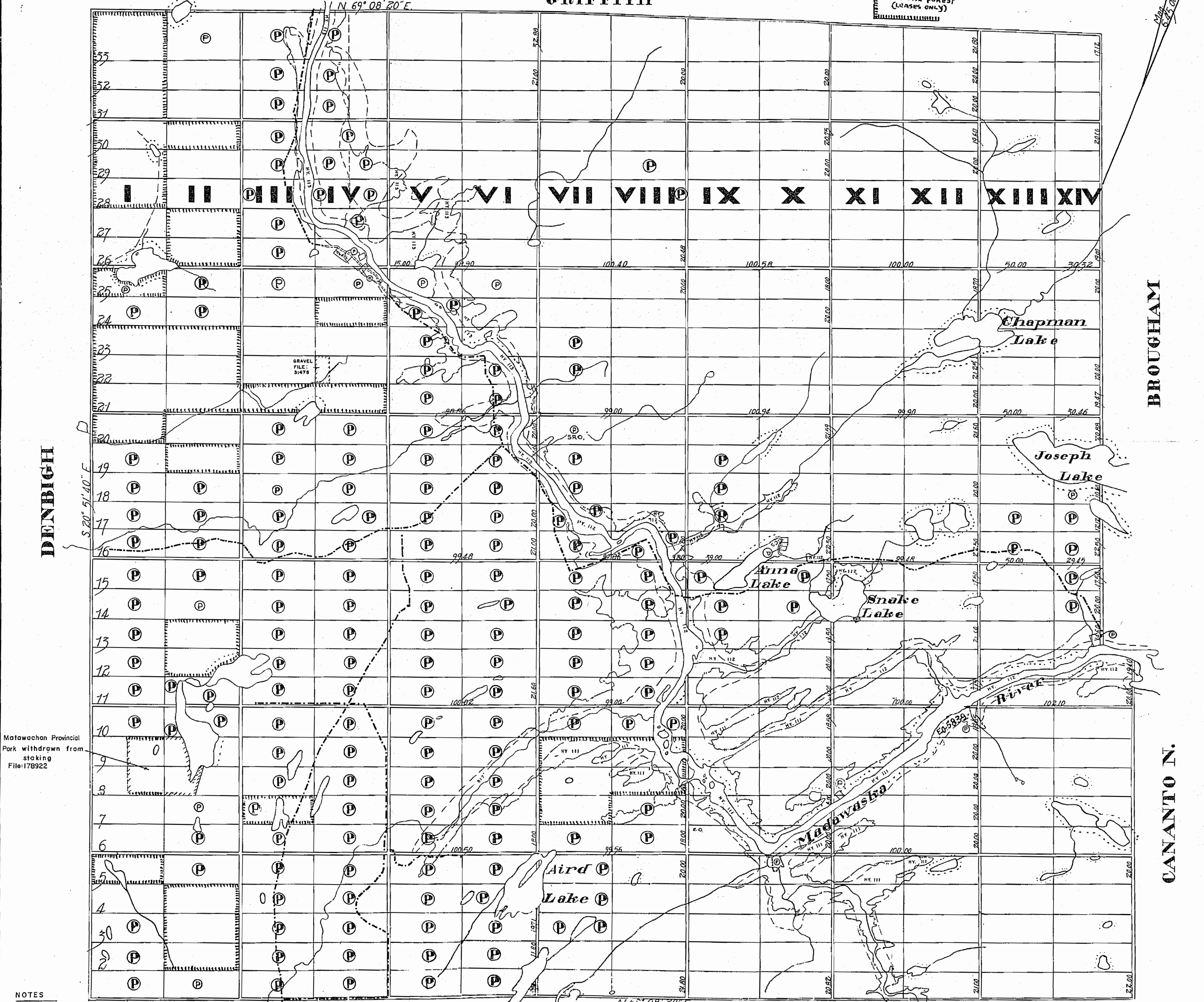
DATE OF ISSUE
JUL 19 1982
Ministry of Natural Resources
TORONTO

ONTARIO
MINISTRY OF NATURAL RESOURCES
SURVEYS AND MAPPING BRANCH

M-123
Scale: 40 Chains = 1 Inch
GRIFFITH

NOTE
AREAS OUTLINED THUS
ARE IN THE EASTERN
PROVINCIAL FOREST
(LEASES ONLY)

M.123



Matawatchan Provincial
Park withdrawn from
staking
File:178922

NOTES

400' surface rights reservation along the shores of all lakes and rivers.
HY. III, II2, II3 flooding to 817' G.S.C. covered by W.P.L.A. No 79. File: 83053.
MILLER Flooding Rights to contours 817 Reserve to H.E.P.C. of Ont.

LEGEND

CANCELLED
PATENTED LAND
CROWN LAND SALE
LEASES
LOCATED LAND
LICENSE OF OCCUPATION
MINING RIGHTS ONLY
SURFACE RIGHTS ONLY

C.
C.
C.S.
C.
LOC.
L.O.
M.R.O.
S.R.O.

MATAWATCHAN

ONTARIO
MINISTRY OF NATURAL RESOURCES
SURVEYS AND MAPPING BRANCH

SOUTHERN ONTARIO
Scale: 40 Chains = 1 Inch
GRIFFITH

NOTE

M.123

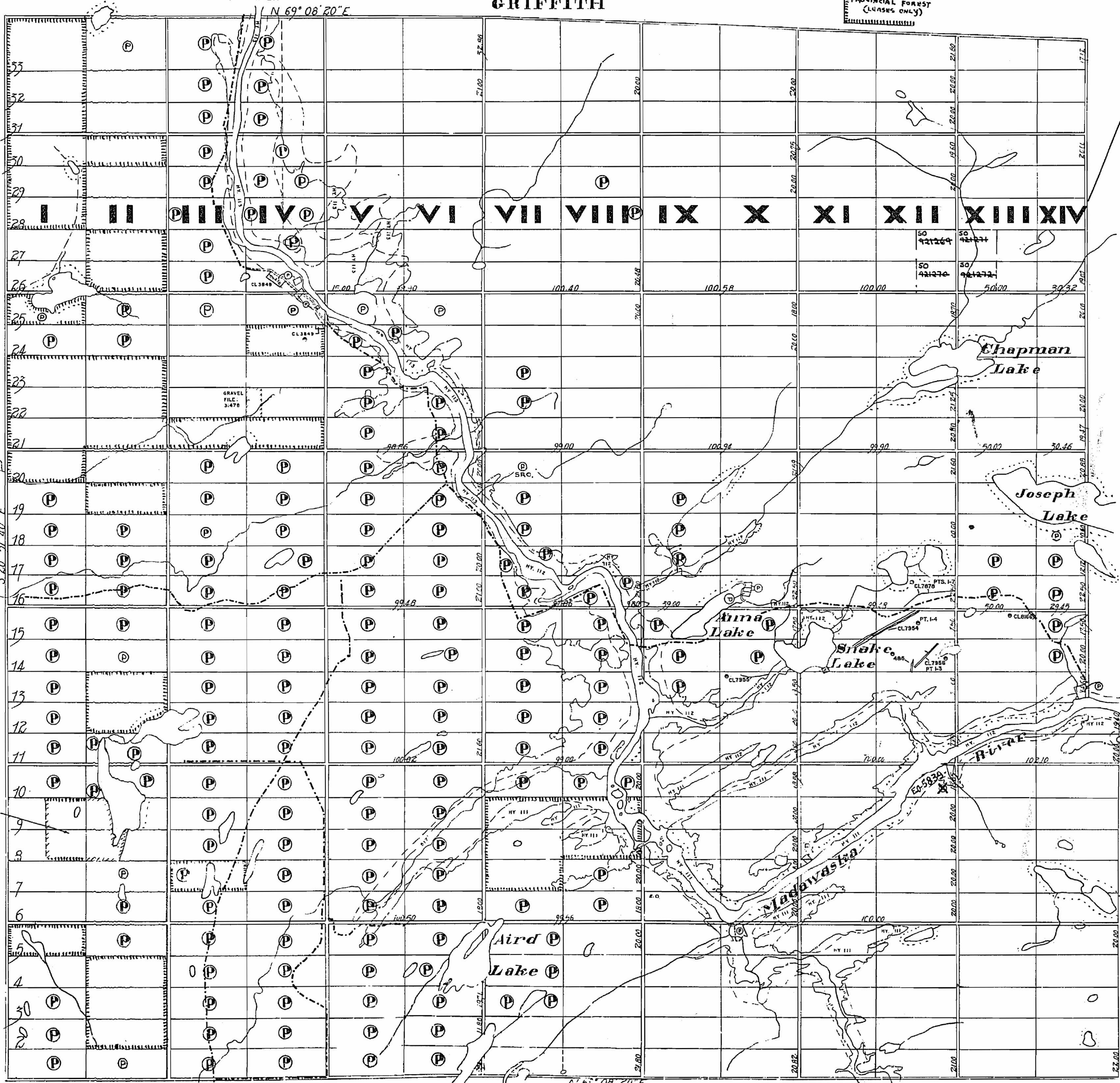
AREAS OUTLINED THUS
ARE IN THE EASTERN
PROVINCIAL FOREST
(LEASES ONLY)

THE INFORMATION THAT
APPEARS ON THIS MAP
HAS BEEN COMPILED
FROM VARIOUS SOURCES,
AND ACCURACY IS NOT
GUARANTEED. THOSE
WISHING TO STAKE MIN-
ING CLAIMS SHOULD CON-
SULT WITH THE MINING
RECORDER, MINISTRY OF
NORTHERN DEVELOP-
MENT AND MINES, FOR AD-
DITIONAL INFORMATION
ON THE STATUS OF THE
LANDS SHOWN HEREON.

DENBIGH

BROUGHAM

CANANTO N.



NOTES

400' surface rights reservation along the shores
of all lakes and rivers.

HY. 111, 112, 113 flooding to 817' G.S.C. covered by
W.P.L.A. No 79. File: 83053.

MILLER

Flooding Rights to contours 817 Reserve to HEPC

| | |
|-----------------------|--------|
| CANCELLED | C. |
| PATENTED LAND | Ⓢ |
| CROWN LAND SALE | C.S. |
| LEASES | Ⓛ |
| LOCATED LAND | LOC. |
| LICENSE OF OCCUPATION | L.O. |
| MINING RIGHTS ONLY | M.R.O. |
| SURFACE RIGHTS ONLY | S.R.O. |

Flooding Rights to contours 817 Reserve to H.E.P.C.

Flooding Rights to contours 817 Reserve to H.E.P.C.

MATAWATCHAN

Crown
Leases
Located Land
License of Occupation
Mining Rights Only
Surface Rights Only

C.S.
LOC
L.O.
M.Y.O.
S.R.O.

Scale: 40 Chains = 1 Inch
GRIFFITH

NOTE

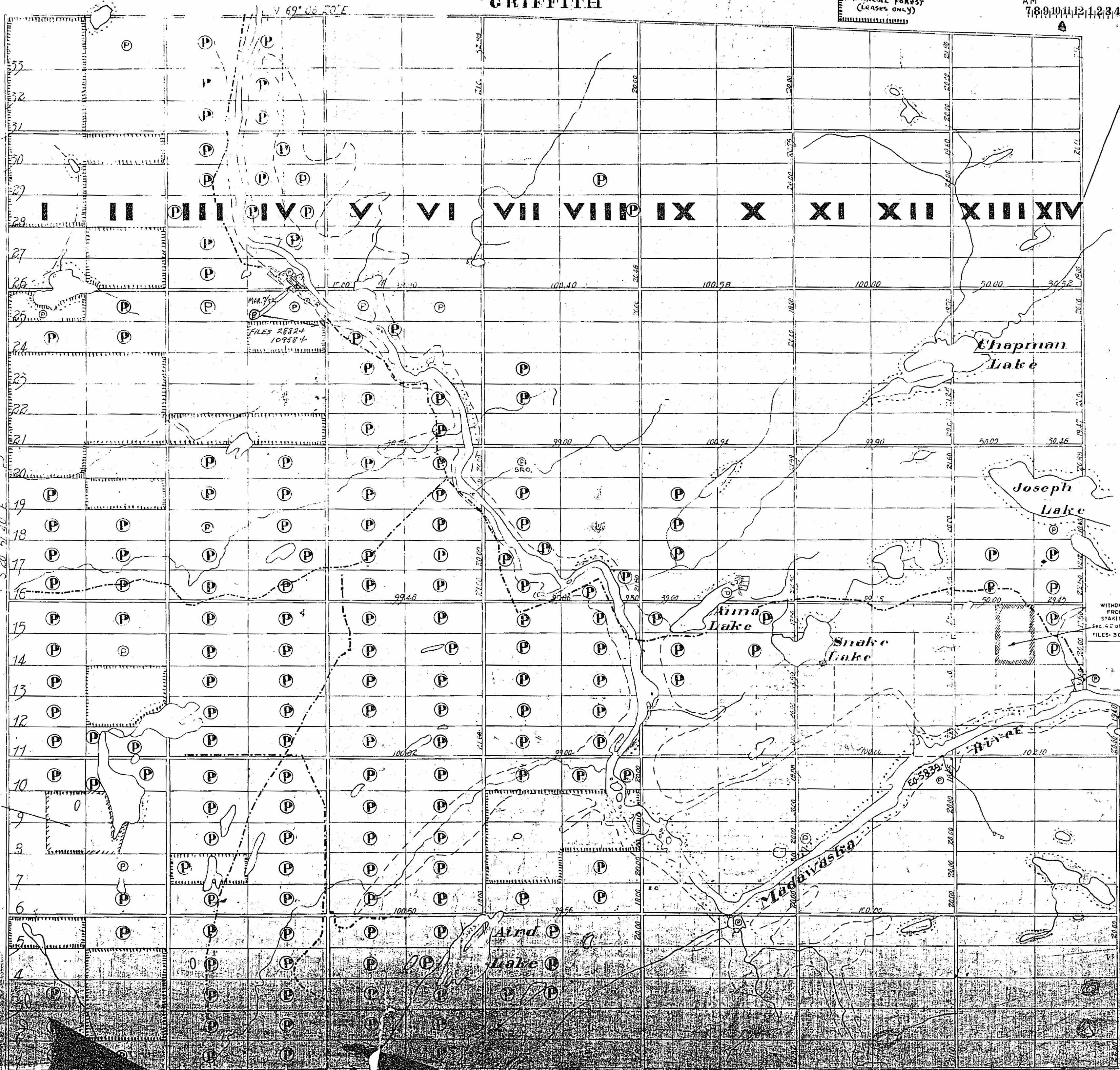
AREAS OUTLINED THUS
ARE IN THE EASTERN
PROVINCIAL FOREST
(LEASES ONLY)

MINING RECORDERS OFFICE—TORONTO
RECEIVED
JAN 20 1970
AM 7 8 9 10 11 12 1 2 3 4 5 6 PM

DENBIGH

BROUGHAM

CANANTO N.



Matawatchan Provincial
Park withdrawn from
staking
File 178922

WITHDRAWN
FROM
STAKING
Sec. 42 of the Mining Act
FILES: 30869 B. 62499

PLAN NO. 1