

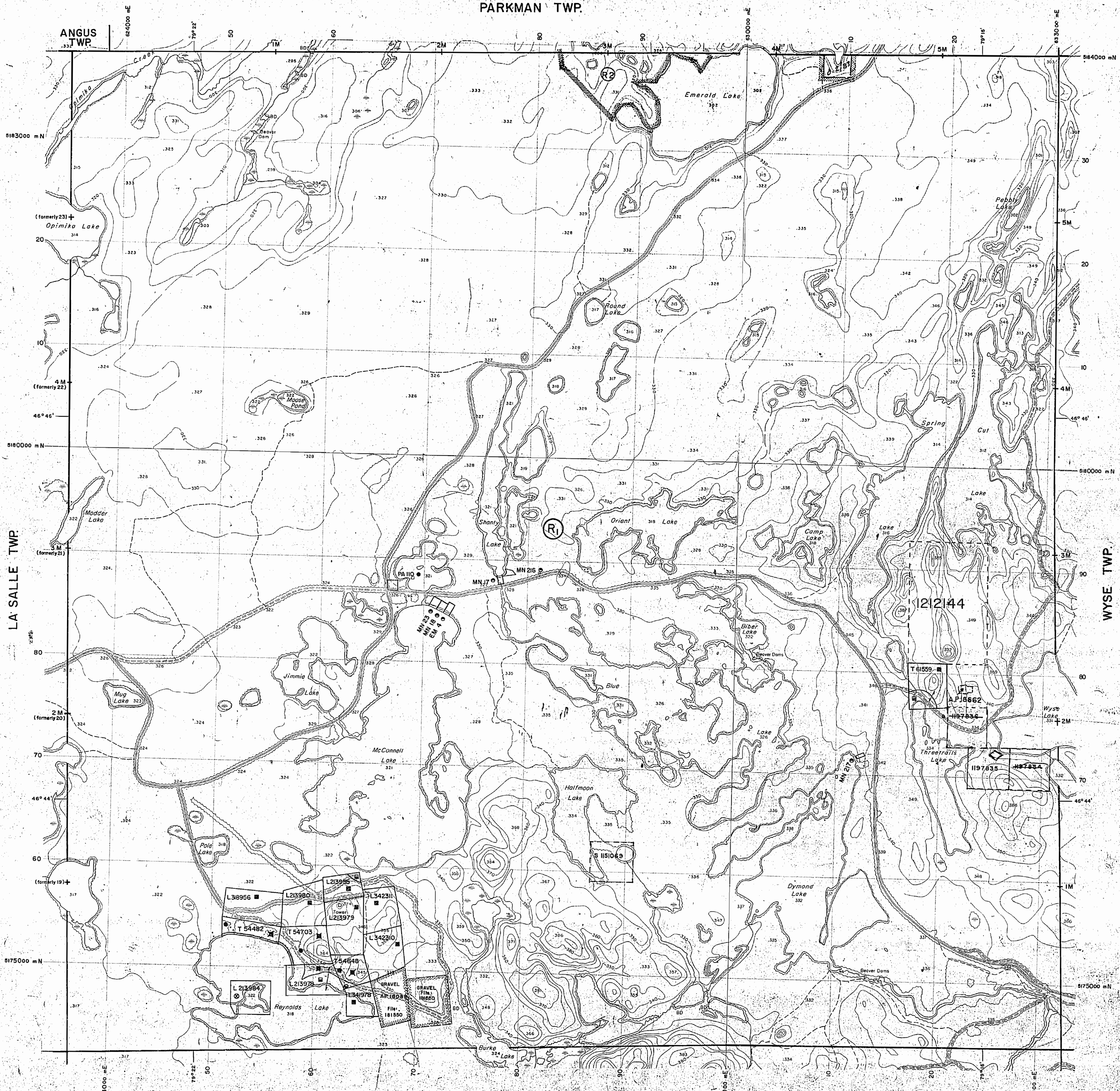
**MAP SYMBOLOGY**

<b>Aerial Cableway</b>	<b>Pipeline</b> (above ground)
<b>Boundary</b>	<b>Railroad</b>
<b>International</b>	Single Track
<b>Interprovincial</b>	Double Track
<b>District, Township</b>	Abandoned
<b>Indian Reserve</b>	<b>Road</b>
<b>Approximate</b>	Highway, County
<b>Lot, Concession</b>	Township
<b>Approximate</b>	Access (road of doubtful
<b>Park Boundary</b>	maintenance or
<b>Bridge</b>	significant driveway)
<b>Head, Railroad</b>	Trail, Back Road
<b>Building</b>	(garage, alley)
<b>Chimney</b>	<b>Rapids</b>
<b>Cliff, Pit, Pile</b>	Double line river
<b>Contours</b>	with multiple rapids
<b>Intermittent</b>	<b>Reservoir</b>
<b>Approximate</b>	Approximate
<b>Depression</b>	Assessment
<b>Control Points</b>	Direction of flow
Horizontal	<b>Rock</b>
Vertical	Significant
<b>Culvert</b>	Shoal
<b>Falls</b>	<b>Spot Elevation</b>
Double line river	(true elevations)
<b>Fence, Hedge,</b>	<b>Tower</b>
<b>Wall</b>	Transmission Line
<b>Feature Outline</b>	Poles
(Construction features,	Pylons
etc.)	<b>Tunnel</b>
<b>Flooded Land</b>	Utility Poles
<b>Lock</b>	Wharf, Dock, Pier
<b>Marsh or Swamp</b>	Wooded Area
<b>Mast</b>	
<b>Mine Head Frame</b>	
<b>Outcrop</b>	

**AREAS WITHDRAWN FROM DISPOSITION**

M.R.O. - MINING RIGHTS ONLY				
S.R.O. - SURFACE RIGHTS ONLY				
M.S. - MINING AND SURFACE RIGHTS				
Description	Order No.	Date	Disposition	File
Sec. 43 (R.S.O. 70)	W16/74	26/04/74	ENTIRE TWP S.R.O.	160707-4
Sec. 35/90	W-S-3/95	19/01/95	M.R.O.	195150

LA SALLE TWP.



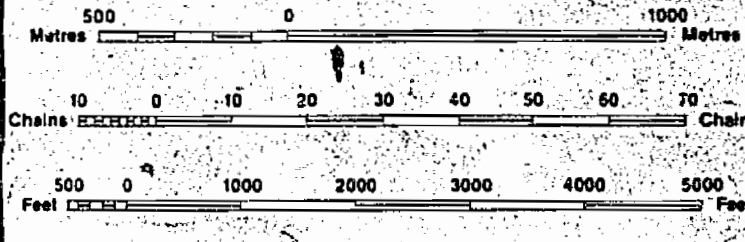
**LEGEND**

HIGHWAY AND ROUTE No.	
OTHER ROADS	
TRAILS	
SURVEYED LINES:	
TOWNSHIPS, BASE LINES, ETC.	
LOTS, MINING CLAIMS, PARCELS, ETC.	
UNSURVEYED LINES:	
LOT LINES	
PARCEL BOUNDARY	
MINING CLAIMS ETC.	
RAILWAY AND RIGHT OF WAY	
UTILITY LINES	
NON-PERENNIAL STREAM	
FLOODING OR FLOODING RIGHTS	
SUBDIVISION OR COMPOSITE PLAN	
RESERVATIONS	
ORIGINAL SHORELINE	
MARSH OR MUSKEG	
MINES	
TRAVERSE MONUMENT	

**DISPOSITION OF CROWN LANDS**

TYPE OF DOCUMENT	SYMBOL
PATENT, SURFACE & MINING RIGHTS	
SURFACE RIGHTS ONLY	
MINING RIGHTS ONLY	
LEASE, SURFACE & MINING RIGHTS	
SURFACE RIGHTS ONLY	
MINING RIGHTS ONLY	
LICENCE OF OCCUPATION	
ORDER-IN-COUNCIL	
RESERVATION	
CANCELLED	
SAND & GRAVEL	

NOTE: MINING RIGHTS IN PARCELS PATENTED PRIOR TO MAY 6, 1913, VESTED IN ORIGINAL PATENTEE BY THE PUBLIC LANDS ACT, R.S.O. 1977, CHAP. 380, SEC. 69, SUBSEC. 1.



0.2/83 reserved for staking  
83-08-03

A.P.18662 EXP24SEPI997

THE INFORMATION THAT APPEARS ON THIS MAP HAS BEEN COMPILED FROM VARIOUS SOURCES, AND ACCURACY IS NOT GUARANTEED. THOSE WISHING TO STAKE MINING CLAIMS SHOULD CONSULT WITH THE MINING RECORDER, MINISTRY OF NORTHERN DEVELOPMENT AND MINES, FOR ADDITIONAL INFORMATION ON THE STATUS OF THE LANDS SHOWN HEREON.

TOWNSHIP  
**MCAUSLAN**  
M.N.R. ADMINISTRATIVE DISTRICT  
NORTH BAY  
MINING DIVISION  
SUBURY  
LAND TITLES / REGISTRY DIVISION  
NIPISSING

MAP SYMBOLOLOGY

Aerial Cableway	Pipeline (above ground)
Boundary	Railroad
International	Single Track
Interprovincial	Double Track
District, Township, Indian Reserve	Abandonment
Accretions	Turntable
Lot, Concession	Road
Approximate	Highway, County Township
Park Boundary	Access (load of doubtful maintenance or significant driveway)
Bridge	Trail, Bush Road (private alley)
Road, Railroad	Rapids
Building	Double line river with multiple rapids
Chimney	Double line river with multiple rapids
Cliff, Pit, Pile	Reservoir
Contours	River, Stream, Canal
Interpreted	Approximate
Approximate	Approximate
Depression	Approximate
Control Points	Approximate
Horizontal	Approximate
Vertical	Approximate
Culvert	Approximate
Falls	Approximate
Double line river	Approximate
Fence, Hedge, Wall	Approximate
Feature Outline (Construction Features, etc.)	Approximate
Flooded Land	Approximate
Lock	Approximate
Marsh or Swamp	Approximate
Mast	Approximate
Mine Head Frame	Approximate
Outcrop	Approximate

AREAS WITHDRAWN FROM DISPOSITION

M.R.O. - MINING RIGHTS ONLY  
 S.R.O. - SURFACE RIGHTS ONLY  
 M.+S. - MINING AND SURFACE RIGHTS

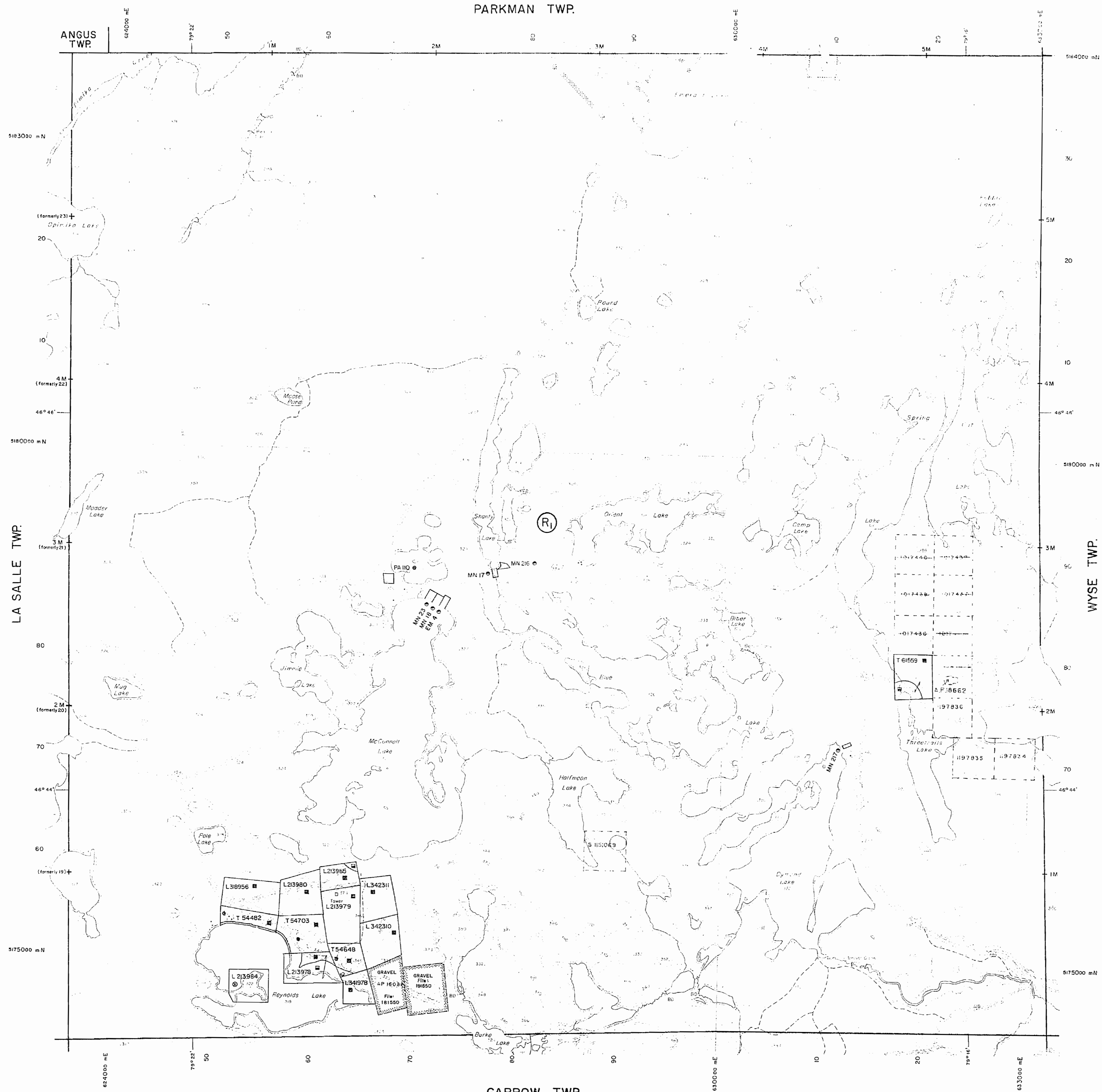
Description	Order No.	Date	Disposition	File
SEC. 43 (R.S.O. '70)	W.18/74	26/04/74	ENTIRE TWP S.R.O.	160702 v.4
S.4.35/90	W.2.3/85	12/1/85	M.R.O.	12/1/85

DATE OF ISSUE

SEP 03 1997

PROVINCIAL RECORDING OFFICE - SUDBURY

PARKMAN TWP.

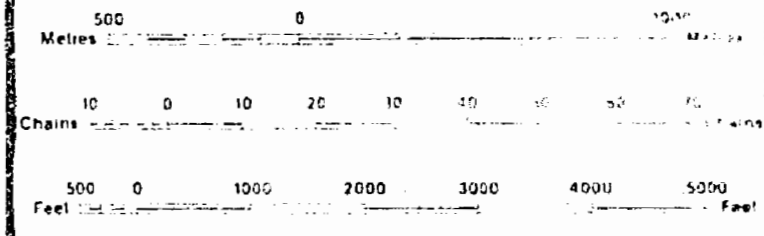


ROADWAY AND ROUTE No.	[Symbol]
OTHER ROADS	[Symbol]
TRAILS	[Symbol]
SURVEYED LINES	[Symbol]
TOWNSHIPS, BASE LINES, ETC.	[Symbol]
LOTS, MINING CLAIMS, PARCELS, ETC.	[Symbol]
UNSURVEYED LINES	[Symbol]
LOT LINES	[Symbol]
PARCEL BOUNDARY	[Symbol]
MINING CLAIMS ETC.	[Symbol]
RAILWAY AND RIGHT OF WAY	[Symbol]
UTILITY LINES	[Symbol]
NON-PERMANENT STREAM	[Symbol]
FLOODING OR FLOODING RIGHTS	[Symbol]
SUBDIVISION OR COMPOSITE PLAN	[Symbol]
RESERVE A FRONT	[Symbol]
ORIGINAL SHORELINE	[Symbol]
MARSH OR MUSKEG	[Symbol]
MINES	[Symbol]
TRAVERSE MONUMENT	[Symbol]

DISPOSITION OF CROWN LANDS

TYPE OF DOCUMENT	SYMBOL
PATENT, SURFACE & MINING RIGHTS	[Symbol]
SURFACE RIGHTS ONLY	[Symbol]
MINING RIGHTS ONLY	[Symbol]
LEASE, SURFACE & MINING RIGHTS	[Symbol]
SURFACE RIGHTS ONLY	[Symbol]
MINING RIGHTS ONLY	[Symbol]
LICENCE OF OCCUPATION	[Symbol]
ORDER IN COUNCIL	[Symbol]
RESERVATION	[Symbol]
CANCELLED	[Symbol]
SAND & GRAVEL	[Symbol]

NOTE: MINING RIGHTS IN PARCELS PATENTED PRIOR TO MAY 6, 1913, VESTED IN ORIGINAL PATENTEE BY THE PUBLIC LANDS ACT, R.S.O. 1970, CHAP. 390, SEC. 42, SUBSEC. 1



SCALE 1:20 000  
 GRID ZONE: 17

THE INFORMATION ON THIS MAP WAS OBTAINED FROM THE PUBLIC LANDS ACT, R.S.O. 1970, CHAP. 390, SEC. 42, SUBSEC. 1. THE PROVINCE OF ONTARIO DOES NOT WARRANT THE ACCURACY OF THE INFORMATION ON THIS MAP. THE PROVINCE OF ONTARIO DOES NOT WARRANT THE ACCURACY OF THE INFORMATION ON THIS MAP.

TOWNSHIP  
**MCAUSLAN**  
 M.N.R. ADMINISTRATIVE DISTRICT  
 NORTH BAY  
 MINING DIVISION  
 SUDBURY  
 LAND TITLES / REGISTRY DIVISION  
 NIPISSING

Ministry of Natural Resources  
 Land Management Branch  
 Ontario

Original Compilation: NOV. 1984  
 Revised:  
**G-1630**

GARROW TWP.

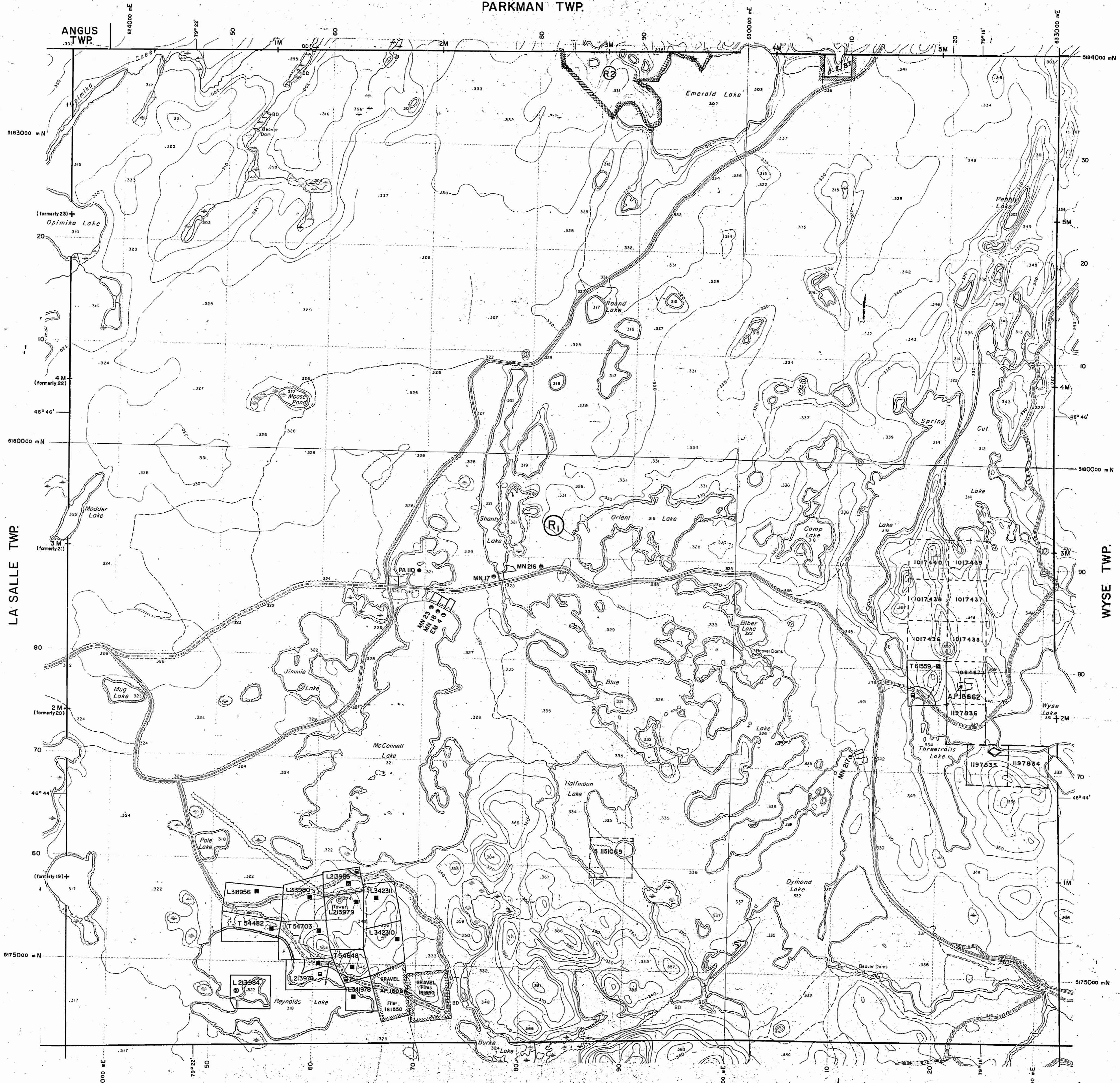
MAP SYMBOLOLOGY

Aerial Cableway	Pipeline (above ground)
Boundary	Railroad
International	Single Track
Provincial	Double Track
Abandoned	Abandoned
Approximate	Turbine
Lot, Concession	Road
Approximate	Highway, County
Park Boundary	Access (road of doubtful maintenance or significant detour)
Bridge	Trails, Beach Road (barge, alley)
Road, Railroad	Rapids
Building	Double line river with multiple rapids
Chimney	Double line river with multiple rapids
Cliff, Pit, Pile	Reservoir
Contours	River, Stream, Canal
Interpretation	Approximate season
Approximate	Direction of flow
Control Points	Rock
Horizontal	Shoal
Vertical	Spot Elevation (less elevational)
Culvert	Tower
Falls	Transmission Line
Double line river	Pole
Fence, Hedge, Wall	Pylon
Feature Outline (Construction features, etc.)	Tunnel
Flooded Land	Utility Poles
Lock	Wharf, Dock, Pier
Marsh or Swamp	Wooded Area
Mast	
Mine Head Frame	
Outcrop	

AREAS WITHDRAWN FROM DISPOSITION

M.R.O. - MINING RIGHTS ONLY			
S.R.O. - SURFACE RIGHTS ONLY			
M.+S. - MINING AND SURFACE RIGHTS			
Description	Order No.	Date	Disposition
SEC. 43 (R.S.D. 70)	W-19/74	25/04/74	ENTIRE TWP. S.R.O. 160707 v.4
SEC. 35/90	W-S-3/95	19/01/95	M.R.O. 195150

PARKMAN TWP.



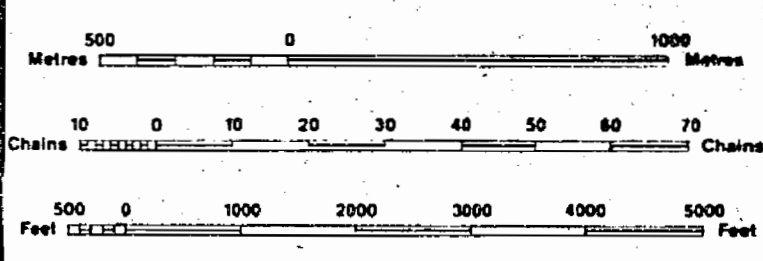
LEGEND

HIGHWAY AND ROUTE No.	
OTHER ROADS	
TRAILS	
SURVEYED LINES:	
TOWNSHIPS, BASE LINES, ETC.	
LOTS, MINING CLAIMS, PARCELS, ETC.	
UNSURVEYED LINES:	
LOT LINES	
PARCEL BOUNDARY	
MINING CLAIMS ETC.	
RAILWAY AND RIGHT OF WAY	
UTILITY LINES	
NON-PERENNIAL STREAM	
FLOODING OR FLOODING RIGHTS	
SUBDIVISION OR COMPOSITE PLAN	
RESERVATIONS	
ORIGINAL SHORELINE	
MARSH OR MUSKEG	
MINES	
TRAVERSE MONUMENT	

DISPOSITION OF CROWN LANDS

TYPE OF DOCUMENT	SYMBOL
PATENT, SURFACE & MINING RIGHTS	
" SURFACE RIGHTS ONLY	
" MINING RIGHTS ONLY	
LEASE, SURFACE & MINING RIGHTS	
" SURFACE RIGHTS ONLY	
" MINING RIGHTS ONLY	
LICENCE OF OCCUPATION	
ORDER-IN-COUNCIL	
RESERVATION	
CANCELLED	
SAND & GRAVEL	

NOTE: MINING RIGHTS IN PARCELS PATENTED PRIOR TO MAY 6, 1913, VESTED IN ORIGINAL PATENTEE BY THE PUBLIC LANDS ACT, R.S.O. 1910, CHAP. 360, SEC. 63, SUBSEC. 1.



SCALE 1:20 000  
GRID ZONE: 17

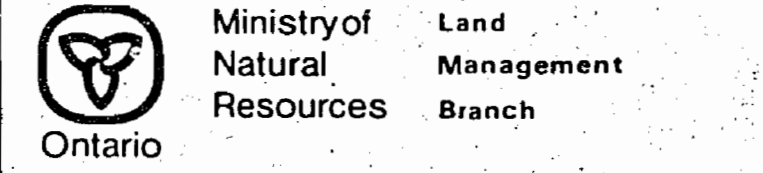
0.2/83 REOPENED FIRE STAKING  
83-08-03

A.P.18662 EXP24SEP1997

DATE OF ISSUE

APR 15 1997  
SUDBURY  
THE INFORMATION THAT APPEARS ON THIS MAP HAS BEEN COMPILED FROM VARIOUS SOURCES, AND ACCURACY IS NOT GUARANTEED. THOSE WISHING TO STAKE MINING CLAIMS SHOULD CONSULT WITH THE MINING RECORDER, MINISTRY OF NORTHERN DEVELOPMENT AND MINES, FOR ADDITIONAL INFORMATION ON THE STATUS OF THE LANDS SHOWN HEREON.

TOWNSHIP  
**MCAUSLAN**  
M.N.R. ADMINISTRATIVE DISTRICT  
NORTH BAY  
MINING DIVISION  
SUDBURY  
LAND TITLES / REGISTRY DIVISION  
NIPISSING



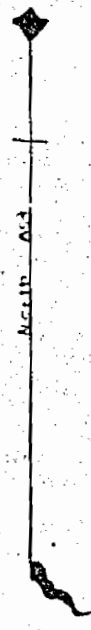
Original Compilation: NOV. 1984  
Number: G-1630

1003

# MC AUSLAN.

## DISTRICT OF NIPISSING

SCALE: 40 CHAINS · 1 INCH.



### PARKMAN

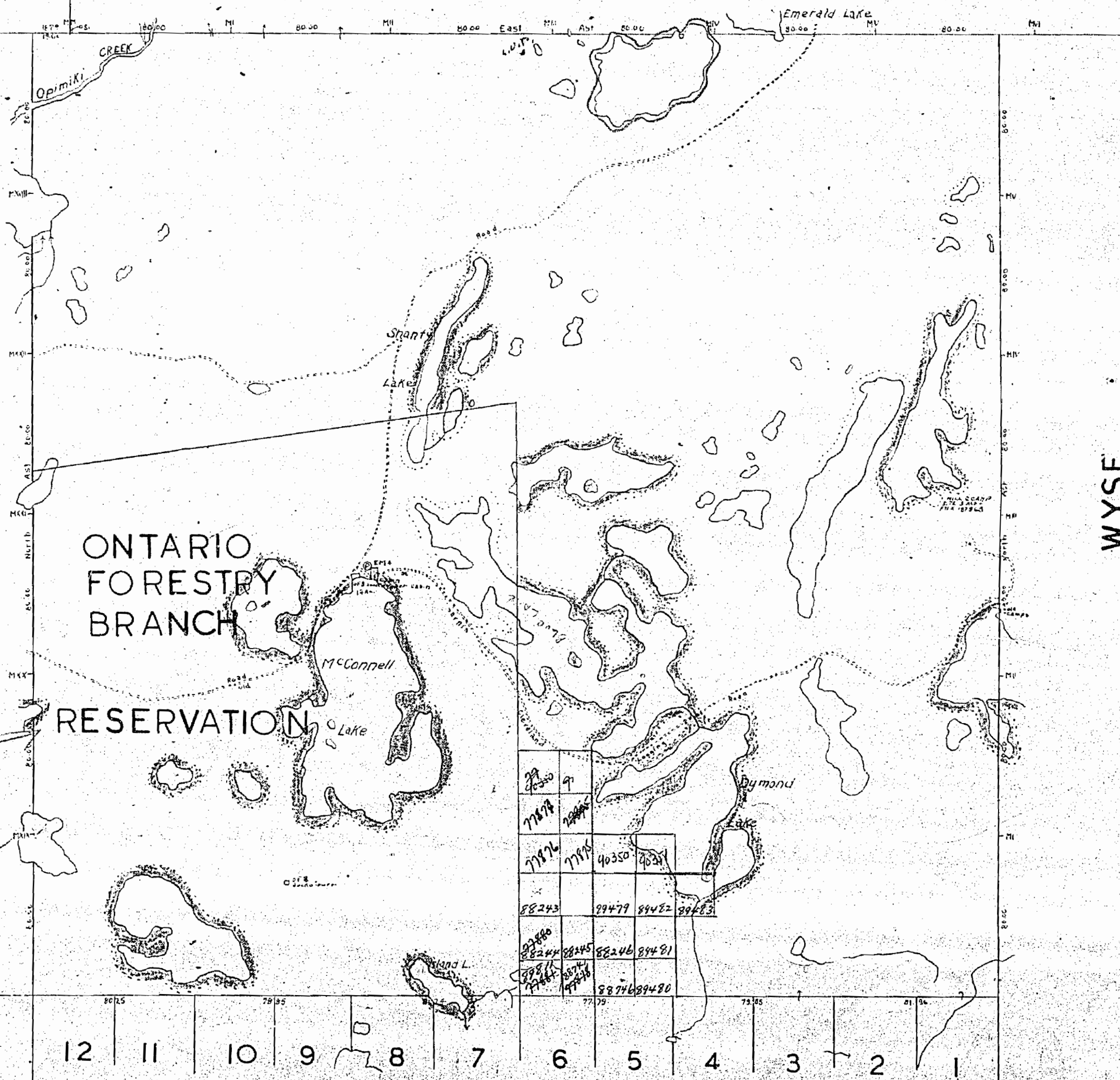
LA SALLE

WYSE

ONTARIO  
FORESTRY  
BRANCH

RESERVATION

GARROW



77350	77351		
77352	77353		
77354	77355	40350	40351
88243	88244	88245	88246
88247	88248	88249	88250
88251	88252	88253	88254
88255	88256	88257	88258
88259	88260	88261	88262
88263	88264	88265	88266
88267	88268	88269	88270
88271	88272	88273	88274
88275	88276	88277	88278
88279	88280	88281	88282
88283	88284	88285	88286
88287	88288	88289	88290
88291	88292	88293	88294
88295	88296	88297	88298
88299	88300		

*Reservation  
Cancelled.  
Class  
open for  
staking  
J.F.M. 5/12/55  
in Twp. 4th*

W. Bay by P.L.S.A. Niven 1851  
W. R. Burke 1850  
E. G.L.S. E.W. Neelands 1828

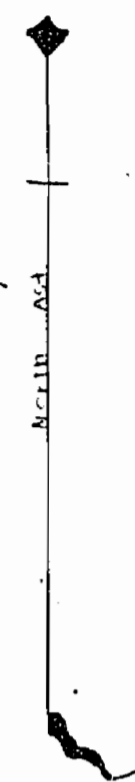
Surface reservations 300 wide by Dept. of L. & F.  
shown hereon thus

# M 1003

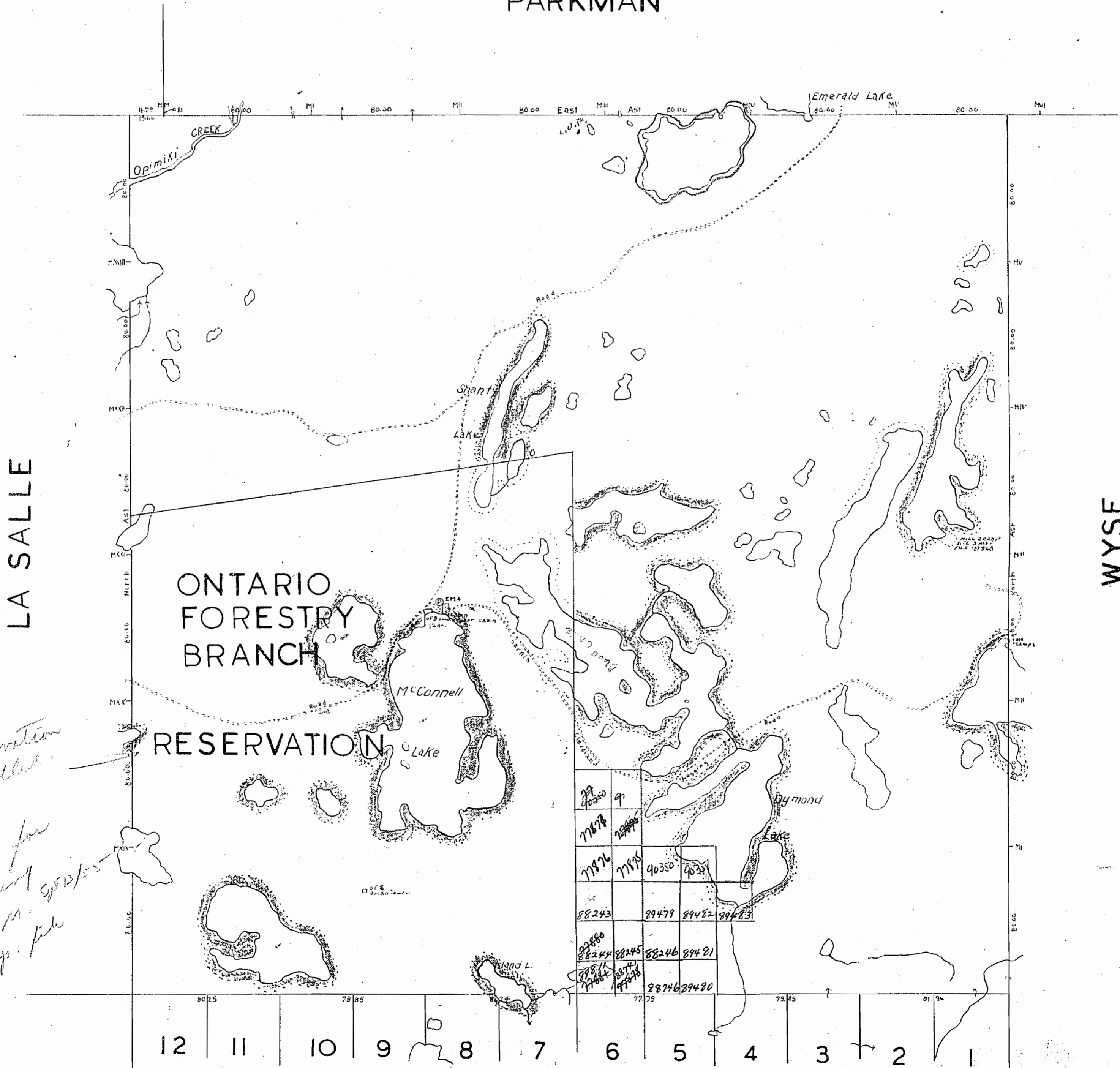
# MC AUSLAN.

DISTRICT OF NIPISSING

SCALE: 40 CHAINS = 1 INCH.



## PARKMAN



*Reservation  
Cancelled.  
Open for  
stocking  
J.F.M. 9/13/55  
Trapp. file*

77878	9			
77876	77875	40350	40351	
88243	89479	84482	89483	
82444	88245	88246	89481	
88746	89480			

W.Bdy by P.L.S.A. Niven 1881  
1883  
W.R. Burke 1890  
O.L.S. E.W. Neelands 1928

Surface reservations 400 wide. by Dept. of L. & F.  
shown hereon thus —————

### GARROW

# 1003M 1003

MAP SYMBOLOLOGY

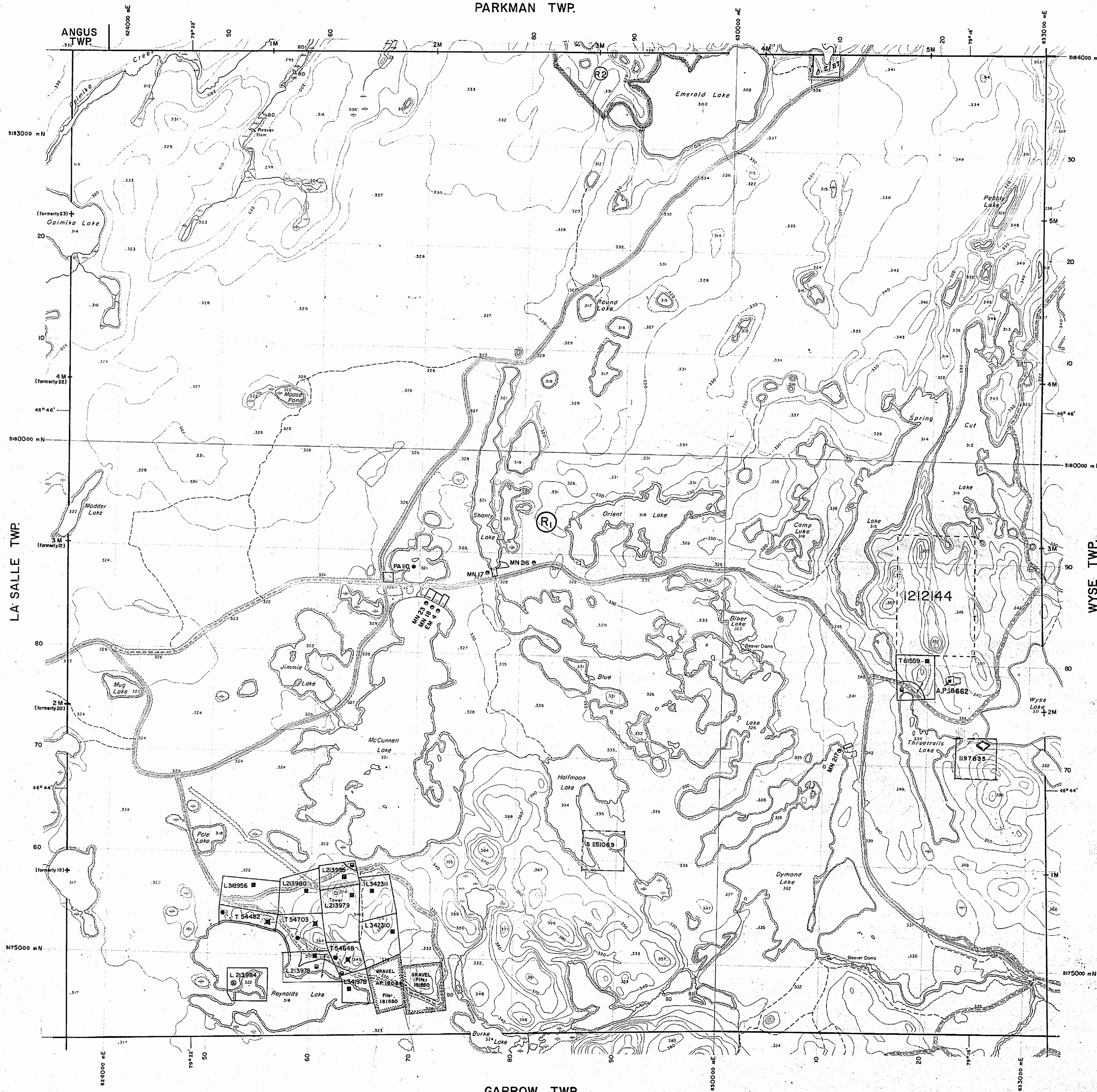
Aerial Cableway	Pipeline (above ground)
Boundary	Railroad
International	Single Track
Intraprovincial	Double Track
Dist. Township Section Boundary	Abandoned
Approximate	Turntable
Let. Concession	Road
Approximate	Highway, County
Park Boundary	Township
Bridge	Along Road of doubtful maintenance or significant driveway
Beam, Railroad	Trail, Back Road (swirly, wavy)
Building	Rapids
Chimney	Double line river with multiple rapids
Cliff, Pit, Pile	Double line river with multiple rapids
Contours	Reservoir
Interpreted	River, Stream, Canal
Depression	Approximate
Control Points	Horizontal
Horizontal	Vertical
Vertical	Rock
Culvert	Spot Elevation (base elevation)
Falla	Tower
Double line river	Transmission Line
Fence, Hedge, Wall	Pole
Feature Outline (Construction features, etc.)	Pylon
Flooded Land	Tunnel
Lock	Utility Poles
Marsh or Swamp	Wharf, Dock, Pier
Mast	Wooded Area
Mine Head Frame	
Outcrop	

AREAS WITHDRAWN FROM DISPOSITION

M.R.O. - MINING RIGHTS ONLY  
 S.R.O. - SURFACE RIGHTS ONLY  
 M.+S. - MINING AND SURFACE RIGHTS

Description	Order No.	Date	Disposition	File
SEC. 43 (R.S.O. 70)	W-18/74	26/04/74	ENTIRE TWP. S.R.O.	160707-4-4
SEC. 35/90	W-5-3/95	19/01/95	M.R.O.	195150

PARKMAN TWP.



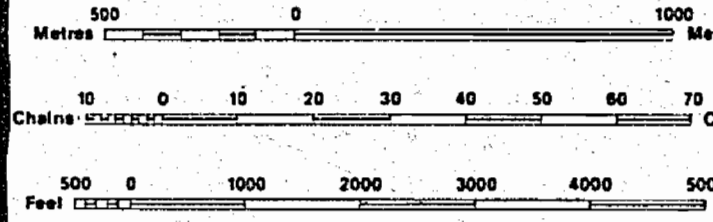
LEGEND

HIGHWAY AND ROUTE No.	
OTHER ROADS	
TRAILS	
SURVEYED LINES: TOWNSHIPS, BASE LINES, ETC.	
LOTS, MINING CLAIMS, PARCELS, ETC.	
UNSURVEYED LINES:	
LOT LINES	
PARCEL BOUNDARY	
MINING CLAIMS ETC.	
RAILWAY AND RIGHT OF WAY	
UTILITY LINES	
NON-PERENNIAL STREAM	
FLOODING OR FLOODING RIGHTS	
SUBDIVISION OR COMPOSITE PLAN RESERVATIONS	
ORIGINAL SHORELINE	
MARSH OR MUSKEG	
MINES	
TRANSVERSE MONUMENT	

DISPOSITION OF CROWN LANDS

TYPE OF DOCUMENT	SYMBOL
PATENT, SURFACE & MINING RIGHTS	
" SURFACE RIGHTS ONLY	
" MINING RIGHTS ONLY	
LEASE, SURFACE & MINING RIGHTS	
" SURFACE RIGHTS ONLY	
" MINING RIGHTS ONLY	
LICENCE OF OCCUPATION	
ORDER-IN-COUNCIL	
RESERVATION	
CANCELLED	
SAND & GRAVEL	

NOTE: MINING RIGHTS IN PARCELS PATENTED PRIOR TO MAY 6, 1913, VESTED IN ORIGINAL PATENTEE BY THE PUBLIC LANDS ACT, R.S.O. 1910, CHAP. 380, SEC. 43, SUBSEC. 1.



SCALE 1:20 000  
 GRID ZONE: 17

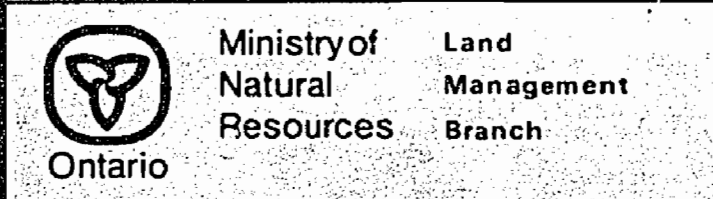
0.2/83 REOPENED FIRE STAKING  
 83-08-03

Application for A.P.  
 July 5, 1984

A.P.18662 EXP24SEP1997

THE INFORMATION THAT APPEARS ON THIS MAP HAS BEEN COMPILED FROM VARIOUS SOURCES, AND ACCURACY IS NOT GUARANTEED. THOSE WISHING TO STAKE MINING CLAIMS SHOULD CONSULT WITH THE MINING RECORDER, MINISTRY OF NORTHERN DEVELOPMENT AND MINES, FOR ADDITIONAL INFORMATION ON THE STATUS OF THE LANDS SHOWN HEREON.

TOWNSHIP  
**MC AUSLAN**  
 M.N.R. ADMINISTRATIVE DISTRICT  
**NORTH BAY**  
 MINING DIVISION  
**SUBBURY**  
 LAND TITLES / REGISTRY DIVISION  
**NIPISSING**



Original Compilation: NOV. 1984  
 Revised:  
 Number  
**G-1630**

GARROW TWP.

Parkman Twp.-M.563

THE TOWNSHIP OF  
OF  
**MCAUSLAN**

DISTRICT OF  
NIPISSING

**SUDBURY**  
MINING DIVISION

SCALE: 1-INCH=40 CHAINS

LEGEND

PATENTED LAND	⊙
CROWN LAND SALE	C.S.
LEASES	⊙
LOCATED LAND	Loc.
LICENSE OF OCCUPATION	L.O.
MINING RIGHTS ONLY	M.R.O.
SURFACE RIGHTS ONLY	S.R.O.
ROADS	—
IMPROVED ROADS	—
KING'S HIGHWAYS	—
RAILWAYS	—
POWER LINES	—
MARSH OR MUSKEG	—
MINES	⊙
CANCELLED	⊙
PATENTED FOR S. R. O.	⊙

NOTES

400' surface rights reservation along the shores of all lakes and rivers.

AREAS WITHDRAWN FROM STAKING

Section	Date	Disposition	File	Order No.

Ⓢ 43 (N.S.O.'70) 26/4/74 ALL of Tp. S.R.O. 160707, v.4. W.18.

\* IN SERVICE 1983 08 03 - 06

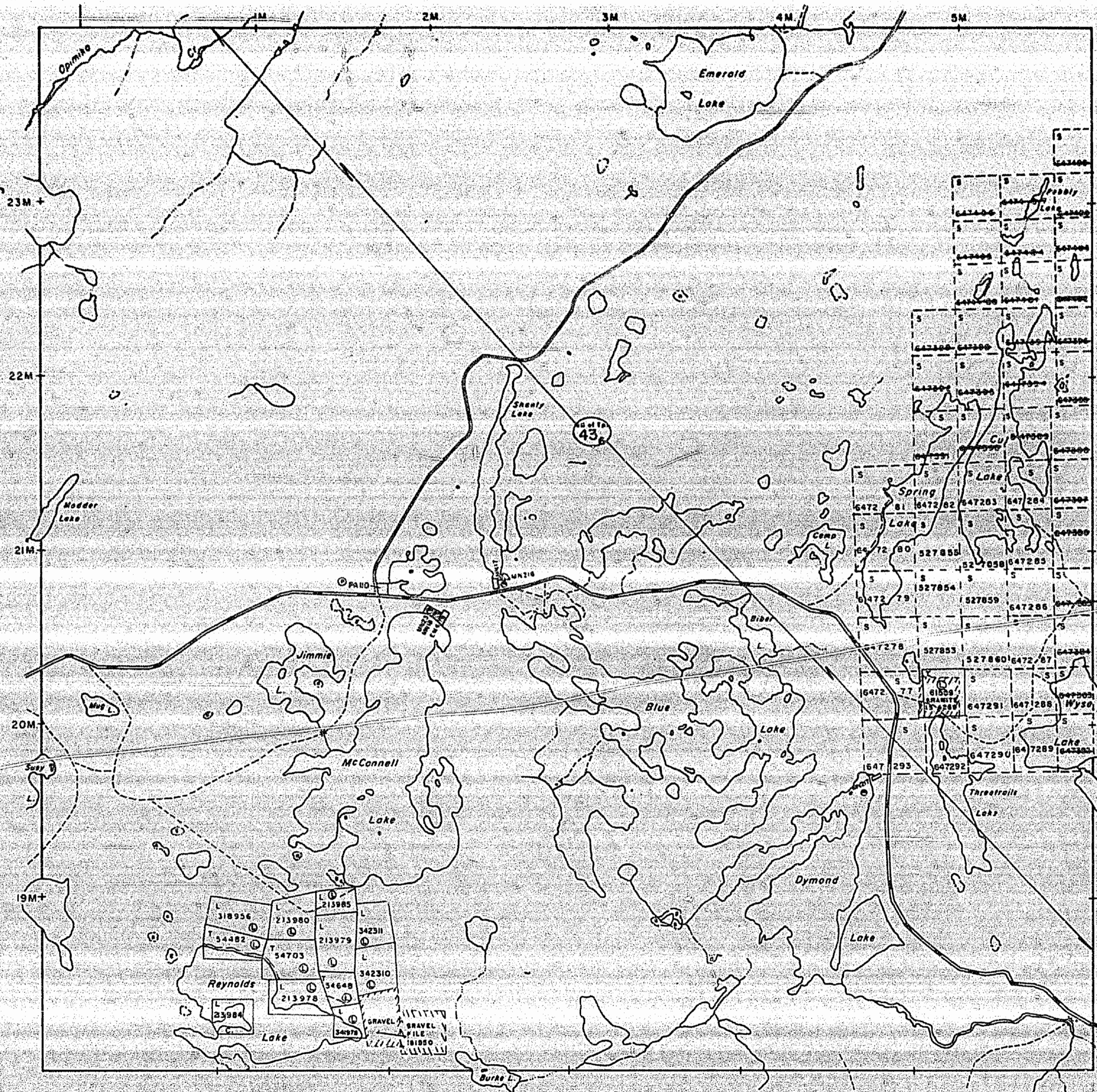
Garrow Twp.-M.830

PLAN NO.- **M.1003**

ONTARIO  
MINISTRY OF NATURAL RESOURCES  
SURVEYS AND MAPPING BRANCH

LaSalle Twp.-M.980

Wyse Twp.-M.1187



MAP SYMBOLOLOGY

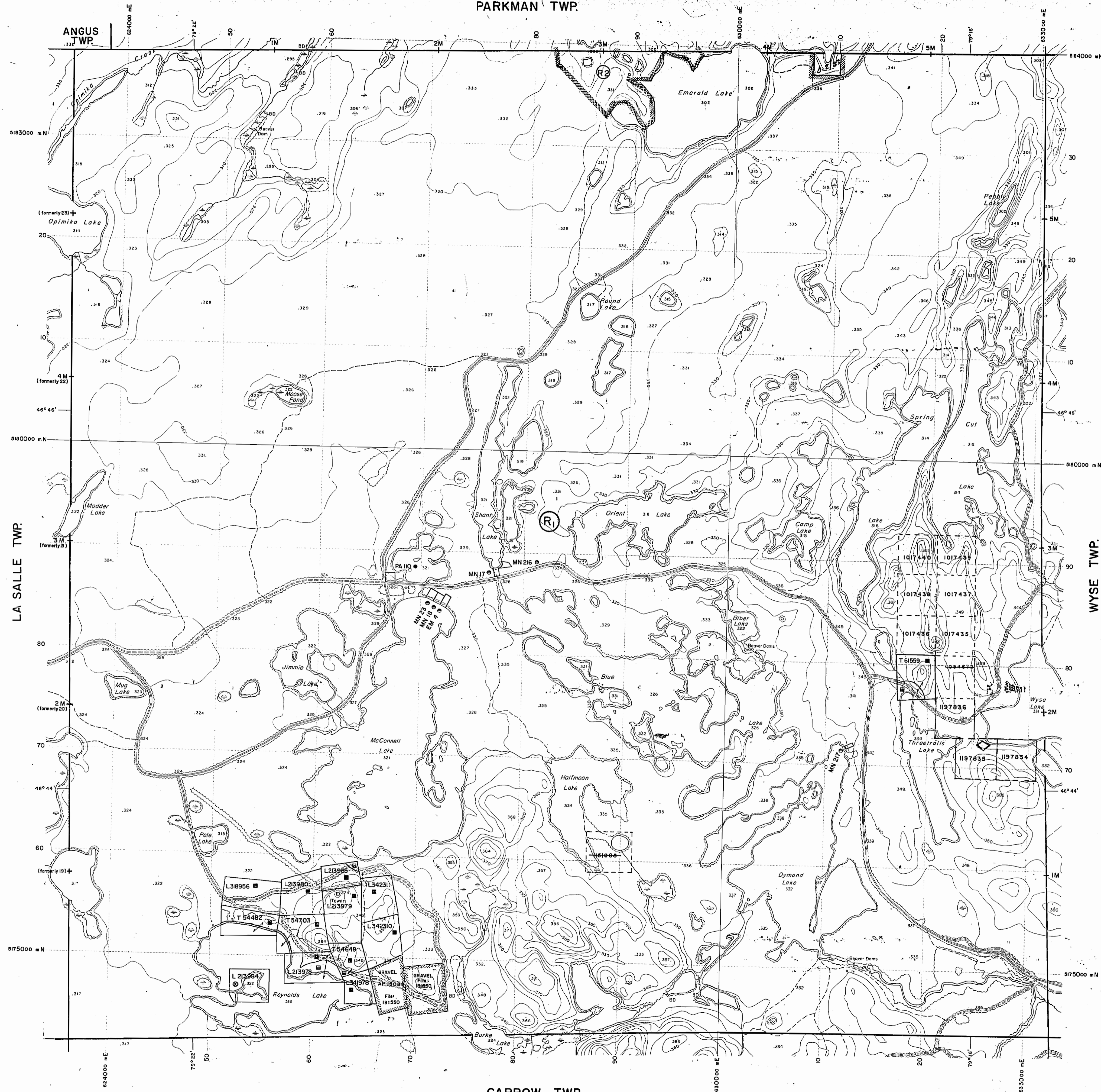
Aerial Cableway	Pipeline (above ground)
Boundary	Railroad
Intermittent	Single Track
Intermittent	Double Track
District, Township (Indian Reserve)	Abandoned
Apprentice	Turbine
Lot, Concession	Road
Apprentice	Highway, County
Park Boundary	Township
Bridge	Access (land of doubtful maintenance or significant driveway)
Road, Railroad	Trail, Bush Road (suitable - steep)
Building	Rapids
Chimney	Double line river with multiple rapids
Cliff, Pit, Pile	Double line river with multiple rapids
Contours	Reservoir
Intermittent	River, Stream, Canal
Apprentice	Approximate
Depression	Direction of flow
Control Points	Rock
Horizontal	Significant
Vertical	Shoal
Culvert	Spot Elevation (above elevation) 300.0
Falls	Tower
Double line river	Transmission Line
Fence, Hedge, Wall	Pole
Feature Outline (Construction features, etc.)	Patrol
Flooded Land	Tunnel
Lock	Utility Poles
Marsh or Swamp	Wharf, Dock, Pier
Mast	Wooded Area
Mine Head Frame	
Outcrop	

AREAS WITHDRAWN FROM DISPOSITION

- M.R.O. - MINING RIGHTS ONLY
- S.R.O. - SURFACE RIGHTS ONLY
- M.+S. - MINING AND SURFACE RIGHTS

Description	Order No.	Date	Disposition	File
SEC. 43 (R.S.O. 70)	W18/74	26/04/74	ENTIRE TWP. S.R.O.	160707 & 4
Sec. 35/90	W-5-3/95	19/01/95	M.R.O.	191510

PARKMAN TWP.



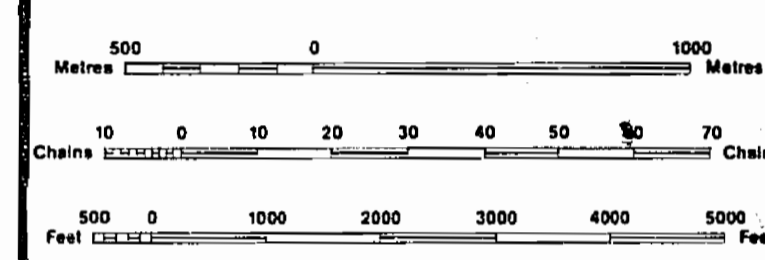
LEGEND

HIGHWAY AND ROUTE No.	
OTHER ROADS	
TRAILS	
SURVEYED LINES:	
TOWNSHIPS, BASE LINES, ETC.	
LOTS, MINING CLAIMS, PARCELS, ETC.	
UNSURVEYED LINES:	
LOT LINES	
PARCEL BOUNDARY	
MINING CLAIMS ETC.	
RAILWAY AND RIGHT OF WAY	
UTILITY LINES	
NON-PERENNIAL STREAM	
FLOODING OR FLOODING RIGHTS	
SUBDIVISION OR COMPOSITE PLAN	
RESERVATIONS	
ORIGINAL SHORELINE	
MARSH OR MUSKOGEE	
MINES	
TRAVERSE MONUMENT	

DISPOSITION OF CROWN LANDS

TYPE OF DOCUMENT	SYMBOL
PATENT, SURFACE & MINING RIGHTS	
" SURFACE RIGHTS ONLY	
" MINING RIGHTS ONLY	
LEASE, SURFACE & MINING RIGHTS	
" SURFACE RIGHTS ONLY	
" MINING RIGHTS ONLY	
LICENCE OF OCCUPATION	
ORDER-IN-COUNCIL	
RESERVATION	
CANCELLED	
SAND & GRAVEL	

NOTE: MINING RIGHTS IN PARCELS PATENTED PRIOR TO MAY 6, 1913, VESTED IN ORIGINAL PATENTEE BY THE PUBLIC LANDS ACT, R.S.O. 1970, CHAP. 380, SEC. 63, SUBSEC. 1.

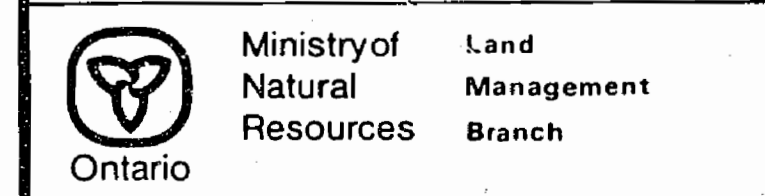


SCALE 1:20 000  
GRID ZONE: 17

0.2/83 REOPENED FOR STAKING  
83-08-03

THE INFORMATION THAT APPEARS ON THIS MAP HAS BEEN COMPILED FROM VARIOUS SOURCES, AND ACCURACY IS NOT GUARANTEED. THOSE WISHING TO STAKE MINING CLAIMS SHOULD CONSULT WITH THE MINING RECORDER, MINISTRY OF NORTHERN DEVELOPMENT AND MINES, FOR ADDITIONAL INFORMATION ON THE STATUS OF THE LANDS SHOWN HEREON.

TOWNSHIP  
**MCAUSLAN**  
M.N.R. ADMINISTRATIVE DISTRICT  
NORTH BAY  
MINING DIVISION  
SUDBURY  
LAND TITLES / REGISTRY DIVISION  
NIPISSING



Original Completion: NOV. 1984  
Revised:  
Number: G-1630

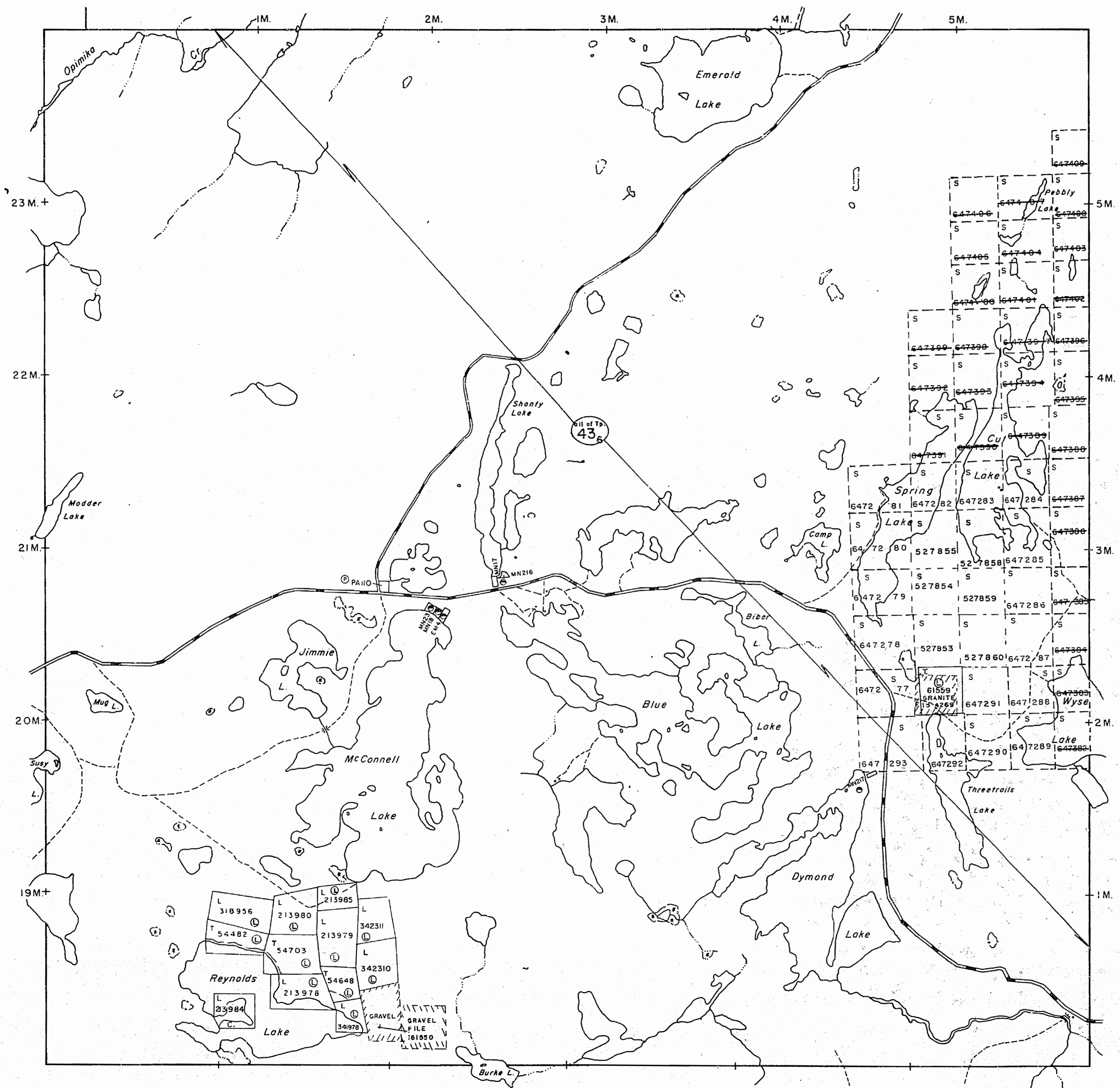


Parkman Twp. - M.563

LaSalle Twp. - M.980

Wyse Twp. - M.1187

Garrow Twp. - M.830



THE TOWNSHIP OF  
OF

**McAUSLAN**

DISTRICT OF  
NIPISSING

**SUDBURY**  
MINING DIVISION

SCALE: 1-INCH=40 CHAINS

LEGEND

PATENTED LAND	Ⓟ
CROWN LAND SALE	C.S.
LEASES	Ⓛ
LOCATED LAND	Loc.
LICENSE OF OCCUPATION	L.O.
MINING RIGHTS ONLY	M.R.O.
SURFACE RIGHTS ONLY	S.R.O.
ROADS	—
IMPROVED ROADS	—
KING'S HIGHWAYS	—
RAILWAYS	—
POWER LINES	—
MARSH OR MUSKEG	##
MINES	X
CANCELLED	C.
PATENTED FOR S. R. O.	Ⓟ

NOTES

400' surface rights reservation along the shores of all lakes and rivers.

AREAS WITHDRAWN FROM STAKING

Section	Date	Disposition	File	Order No.

Ⓟ 43 (R.S.O. '70) 26/4/74 ALL of Tp. S.R.O. 160707, v.4 - W.18 -

\* IN SERVICE 1983 08 03 - VW

PLAN NO. - **M.1003**

ONTARIO  
MINISTRY OF NATURAL RESOURCES  
SURVEYS AND MAPPING BRANCH

Parkman Twp. - M.563

THE TOWNSHIP OF  
OF

**MCAUSLAN**

DISTRICT OF  
NIPISSING

LARDER LAKE  
MINING DIVISION

SCALE: 1-INCH=40 CHAINS

LEGEND

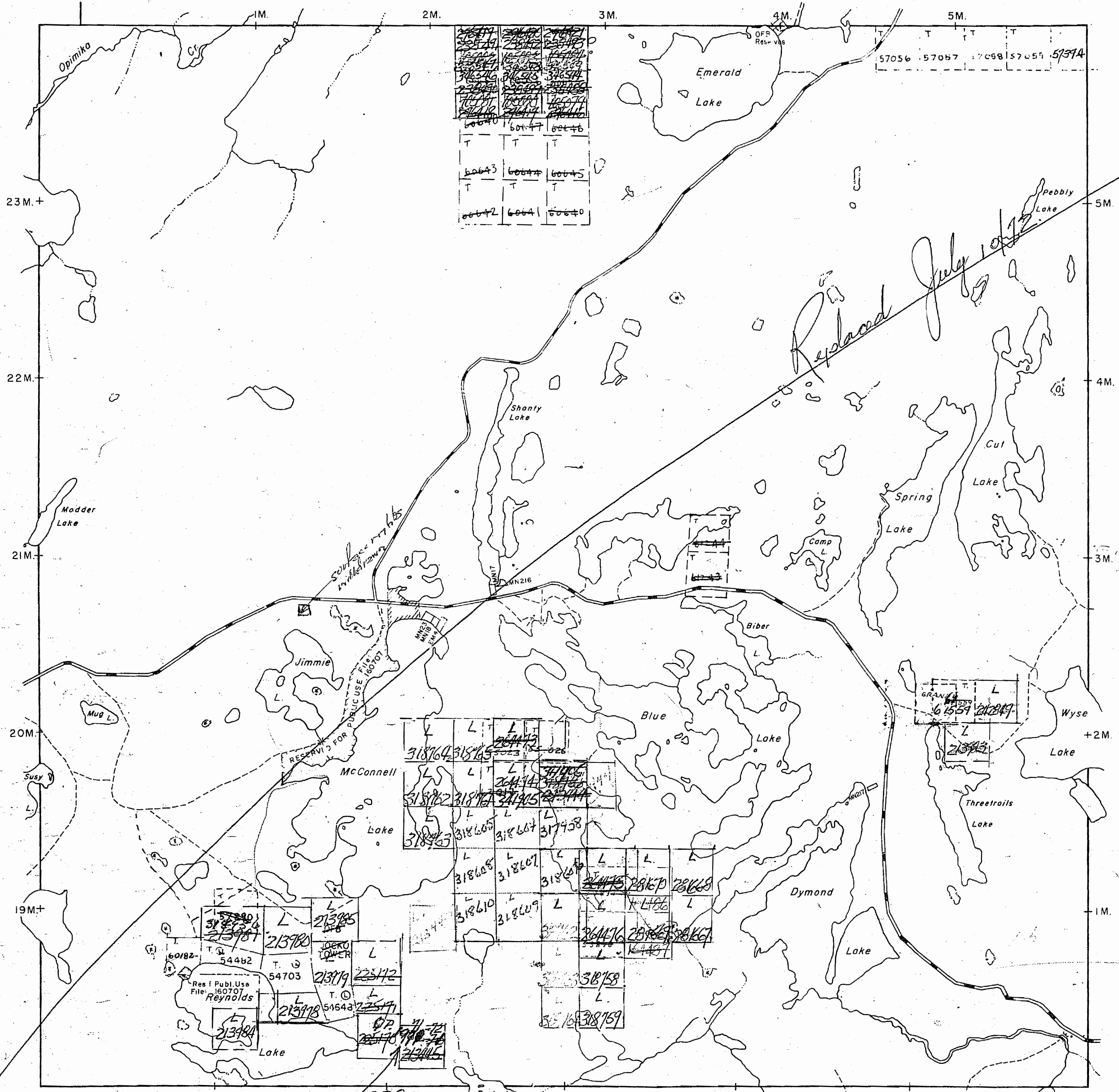
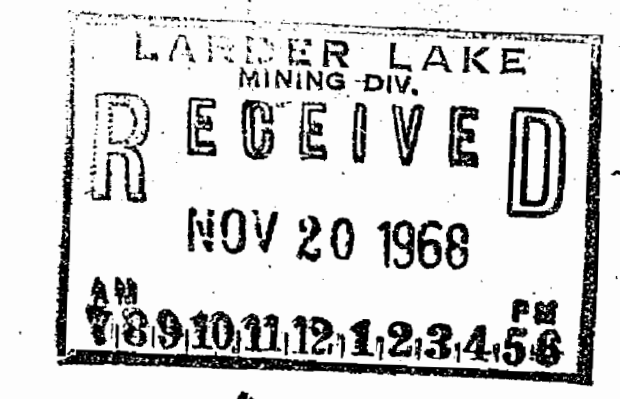
- PATENTED LAND Ⓟ
- CROWN LAND SALE C.S.
- LEASES Ⓞ
- LOCATED LAND Loc.
- LICENSE OF OCCUPATION L.O.
- MINING RIGHTS ONLY M.R.O.
- SURFACE RIGHTS ONLY S.R.O.
- ROADS
- IMPROVED ROADS =
- KING'S HIGHWAYS =
- RAILWAYS =
- POWER LINES =
- MARSH OR MUSKEG =
- MINES X
- CANCELLED C.

NOTES

100' surface rights reservation around all  
takes and dikes

---

Surface Rights reserved for Dept. of Lands  
& Forests under Sec 39 of the Mining Act  
shown thus   File 160707



LaSalle Twp. - M.980

Wyse Twp. - M.1187

QP.8-20-1972  
issued for removal of industrial rock  
Garrow Twp. - M.830

PLAN NO. - **M.1003**

DEPARTMENT OF MINES

— ONTARIO —

1003



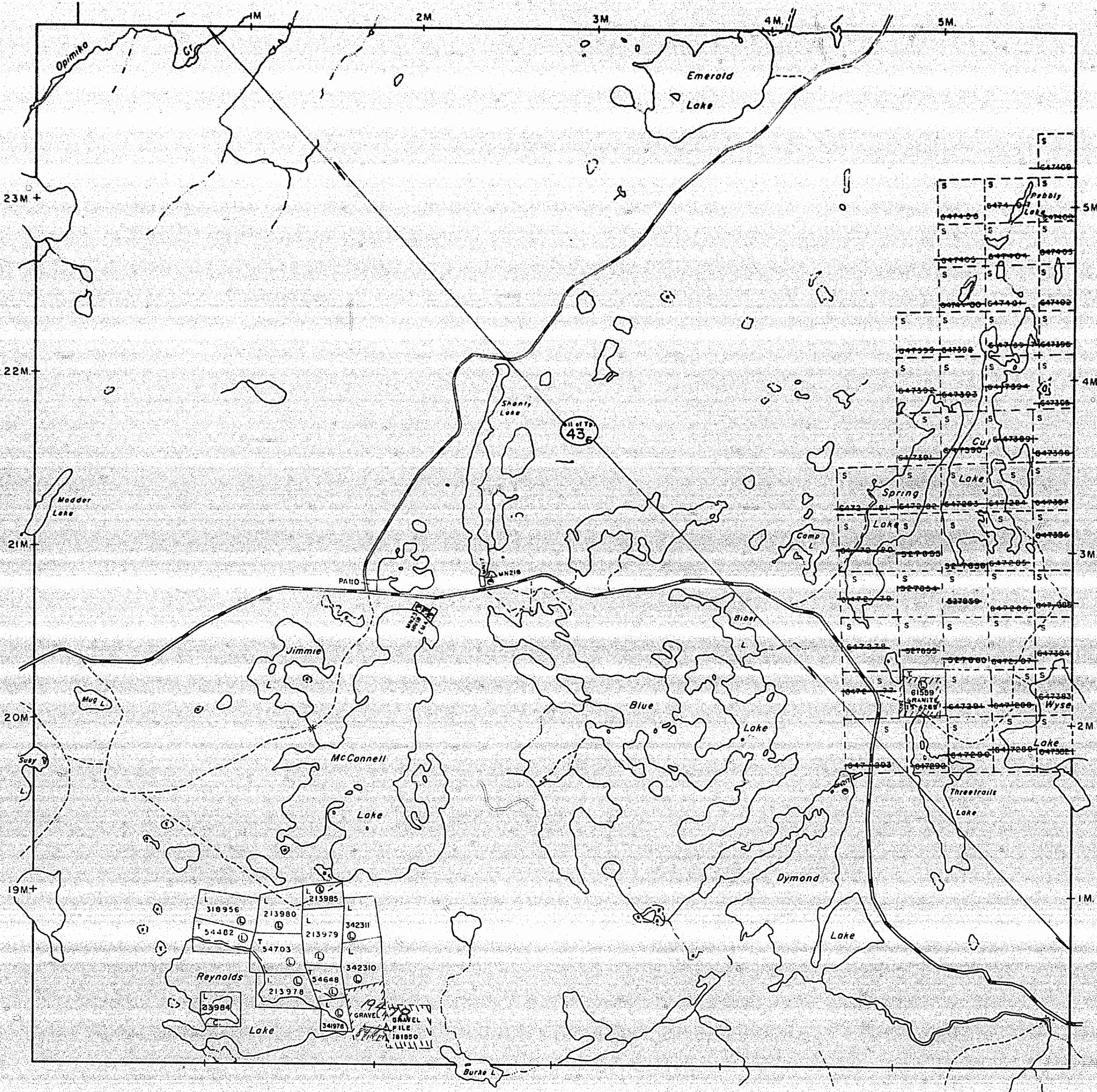
\* (Aug. 5/83)

Parkman Twp. - M.563

LaSalle Twp. - M.980

Wyse Twp. - M.1187

Garrow Twp. - M.830



THE TOWNSHIP  
OF  
**McAUSLAN**

DISTRICT OF  
NIPISSING

SUDBURY  
MINING DIVISION

SCALE: 1-INCH=40 CHAINS

LEGEND

PATENTED LAND	⊙
CROWN LAND SALE	C.S.
LEASES	⊖
LOCATED LAND	Loc.
LICENSE OF OCCUPATION	L.O.
MINING RIGHTS ONLY	M.R.O.
SURFACE RIGHTS ONLY	S.R.O.
ROADS	—
IMPROVED ROADS	—
KING'S HIGHWAYS	—
RAILWAYS	—
POWER LINES	—
MARSH OR MUSKEG	—
MINES	⋈
CANCELLED	C.
PATENTED FOR S.R.O.	⊖

NOTES

400' surface rights reservation along the shores of all lakes and rivers.

AREAS WITHDRAWN FROM STAKING

Section	Date	Disposition	File	Order No.

Ⓡ 43 (R.S.O.'70) 26/4/74 ALL of Tp. S.R.O. 160707, v.4 - W.18-74

\* IN SERVICE PRIOR TO 1983 - U.M.

*McAuslan*  
PLAN NO. - **M.1003**

ONTARIO  
MINISTRY OF NATURAL RESOURCES  
SURVEYS AND MAPPING BRANCH





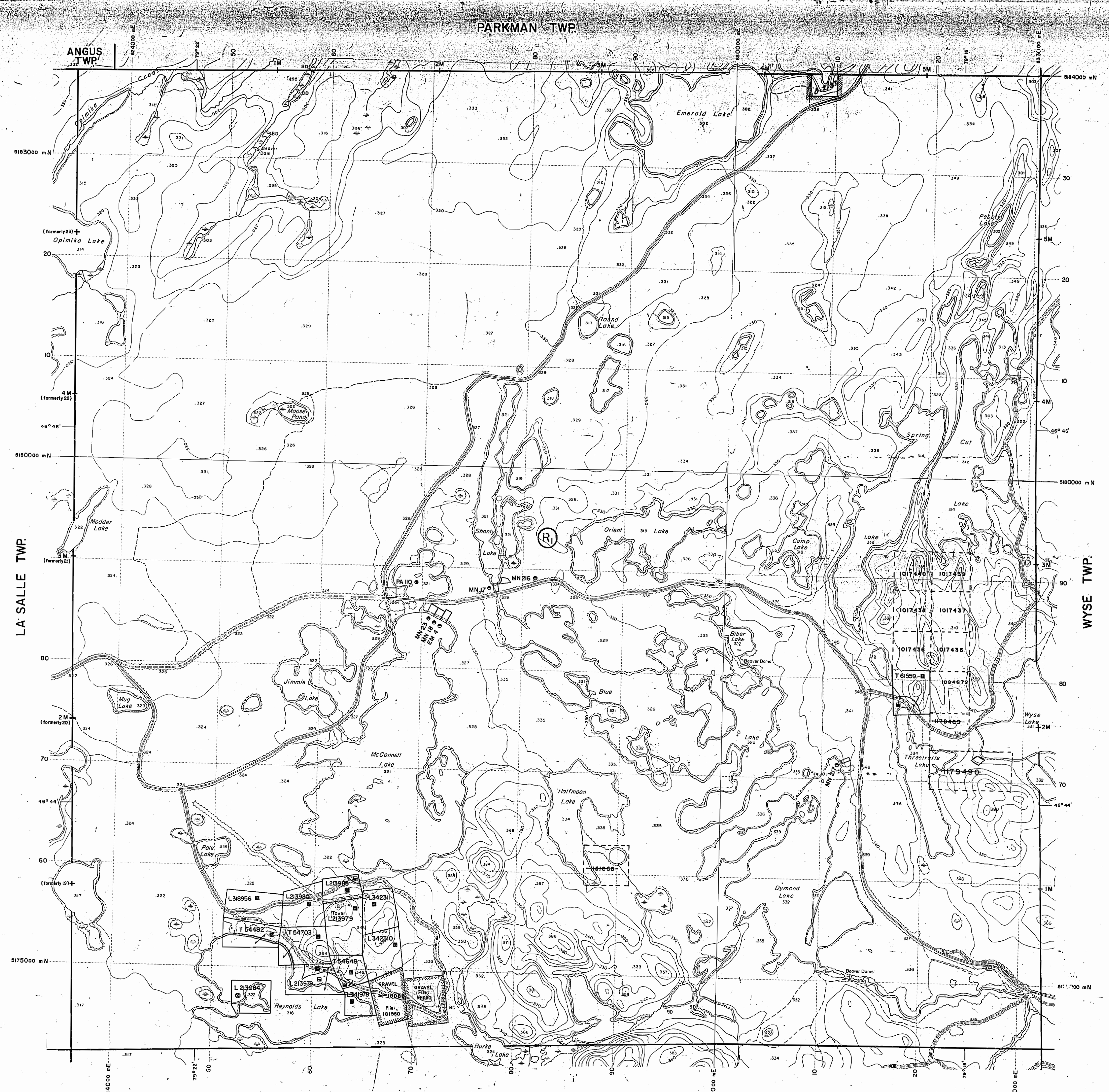
MAP SYMBOLS

<b>Aerial Cableway</b>	<b>Pipeline</b> (above ground)
<b>Boundary</b>	<b>Railroad</b>
<b>Intersecting</b>	<b>Single Track</b>
<b>Intermittent</b>	<b>Double Track</b>
<b>Ontario, Toronto</b>	<b>Abandoned</b>
<b>Indian Reserve</b>	<b>Turbine</b>
<b>Approximate</b>	<b>Road</b>
<b>Lot, Cancellation</b>	<b>Highway, County</b>
<b>Approximate</b>	<b>Township</b>
<b>Peak Boundary</b>	<b>Access (road of doubtful maintenance or significant driveway)</b>
<b>Bridge</b>	<b>Trail, Back Road (storage, alley)</b>
<b>Road, Railroad</b>	<b>Rapids</b>
<b>Building</b>	<b>Double line river with multiple rapids</b>
<b>Chimney</b>	<b>Double line river with multiple rapids</b>
<b>Cliff, Pit, Pile</b>	<b>Reservoir</b>
<b>Contours</b>	<b>River, Stream, Canal</b>
<b>Intersecting</b>	<b>Approximate</b>
<b>Approximate</b>	<b>Approximate</b>
<b>Depression</b>	<b>Approximate</b>
<b>Control Points</b>	<b>Approximate</b>
<b>Horizontal</b>	<b>Approximate</b>
<b>Vertical</b>	<b>Approximate</b>
<b>Culvert</b>	<b>Approximate</b>
<b>Falls</b>	<b>Approximate</b>
<b>Double line river</b>	<b>Approximate</b>
<b>Fence, Hedge, Wall</b>	<b>Approximate</b>
<b>Feature Outline (Construction Features, etc.)</b>	<b>Approximate</b>
<b>Flooded Land</b>	<b>Approximate</b>
<b>Lock</b>	<b>Approximate</b>
<b>Marsh or Swamp</b>	<b>Approximate</b>
<b>Mast</b>	<b>Approximate</b>
<b>Mine Head Frame</b>	<b>Approximate</b>
<b>Outcrop</b>	<b>Approximate</b>

**AREAS WITHDRAWN FROM DISPOSITION**

M.R.O. - MINING RIGHTS ONLY  
 S.R.O. - SURFACE RIGHTS ONLY  
 M.+S. - MINING AND SURFACE RIGHTS

Description	Order No.	Date	Disposition	File
SEC. 43 (R.S.O. 70)	W10/74	26/04/74	ENTIRE TWP S.R.O.	160707 v.4



**LEGEND**

HIGHWAY AND ROUTE No. OTHER ROADS

TRAILS

SURVEYED LINES:  
 TOWNSHIPS, BASE LINES, ETC.  
 LOTS, MINING CLAIMS, PARCELS, ETC.

UNSURVEYED LINES:  
 LOT LINES  
 PARCEL BOUNDARY  
 MINING CLAIMS ETC.

RAILWAY AND RIGHT OF WAY

UTILITY LINES

NON-PERENNIAL STREAM  
 FLOODING OR FLOODING PLANS  
 SUBDIVISION OR COMPOSITE PLAN

RESERVATIONS

ORIGINAL SHORELINE

MARSH OR MUSKEG

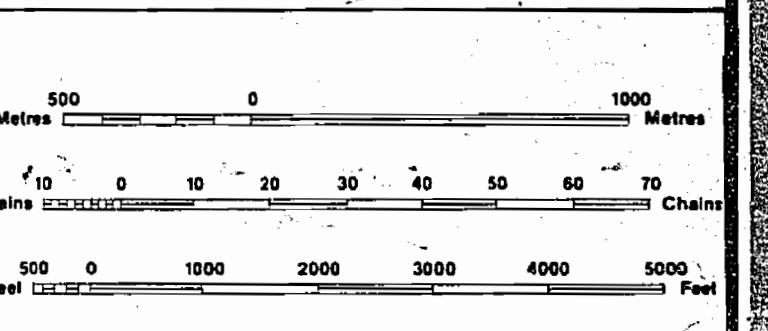
MINES

TRAVERSE MONUMENT

**DISPOSITION OF CROWN LANDS**

TYPE OF DOCUMENT	SYMBOL
PATENT, SURFACE & MINING RIGHTS	●
" SURFACE RIGHTS ONLY	○
" MINING RIGHTS ONLY	○
LEASE, SURFACE & MINING RIGHTS	■
" SURFACE RIGHTS ONLY	■
" MINING RIGHTS ONLY	■
LICENCE OF OCCUPATION	▼
ORDER-IN-COUNCIL	○
RESERVATION	○
CANCELLED	○
SAND & GRAVEL	○

NOTE: MINING RIGHTS IN PARCELS PATENTED PRIOR TO MAY 6, 1913, VESTED IN ORIGINAL PATENTEE BY THE PUBLIC LANDS ACT, R.S.O. 1910, CHAP. 380, SEC. 63, SUBSEC. 1.



SCALE 1:20 000  
 GRID ZONE: 17

0.2/83 REOPENED FIRE STAKING  
 83-08-03

THE INFORMATION THAT APPEARS ON THIS MAP HAS BEEN COMPILED FROM VARIOUS SOURCES, AND ACCURACY IS NOT GUARANTEED. THOSE WISHING TO STAKE MINING CLAIMS SHOULD CONSULT WITH THE MINING RECORDER, MINISTRY OF NORTHERN DEVELOPMENT AND MINES, FOR ADDITIONAL INFORMATION ON THE STATUS OF THE LANDS SHOWN HEREON.

TOWNSHIP  
**MCAUSLAN**  
 M.N.R. ADMINISTRATIVE DISTRICT  
 NORTH BAY  
 MINING DIVISION  
 SUDBURY  
 LAND TITLES / REGISTRY DIVISION  
 NIPISSING

Ministry of Natural Resources  
 Land Management Branch  
 Ontario

Original Compilation: NOV. 1984  
 Revised:

Number  
**G-1630**

OFFICE USE ONLY

Parkman Twp. - M.563

THE TOWNSHIP OF  
OF

**MCAUSLAN**

DISTRICT OF  
NIPISSING

SUDBURY  
MINING DIVISION

SCALE: 1-INCH=40 CHAINS

LEGEND

PATENTED LAND	Ⓟ
CROWN LAND SALE	C.S.
LEASES	Ⓞ
LOCATED LAND	Loc.
LICENSE OF OCCUPATION	L.O.
MINING RIGHTS ONLY	M.R.O.
SURFACE RIGHTS ONLY	S.R.O.
ROADS	—
IMPROVED ROADS	—
KING'S HIGHWAYS	—
RAILWAYS	—
POWER LINES	—
MARSH OR MUSKEG	—
MINES	ⓧ
CANCELLED	C.
PATENTED FOR S. R.O.	Ⓞ

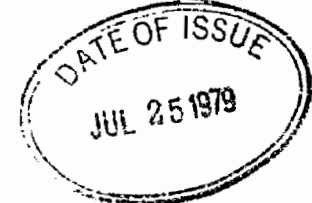
NOTES

400' surface rights reservation along the shores of all lakes and rivers.

AREAS WITHDRAWN FROM STAKING

Section	Date	Disposition	File	Order No.
Ⓟ	Reserved for Public use	—	160707	
Ⓞ	39 (R.S.O.'70) 10-M.H.R.	S.R.	"	
Ⓞ	Reserved for Public use	—	160707-2	
Ⓞ	M.N.R. Reserves	—		
Ⓞ	43 (R.S.O.'70) 26/4/74	ALL of Tp. S.R.O. 160707, v.4. W.18.		

Location PA 110 (Part 1) Plan 36R-6346 See In-A-Roll.



\* S.R.O. WITHDRAWN FROM STAKING. ALL OF MCAUSLAN TWP.

PLAN NO. - **M.1003**

ONTARIO

MINISTRY OF NATURAL RESOURCES

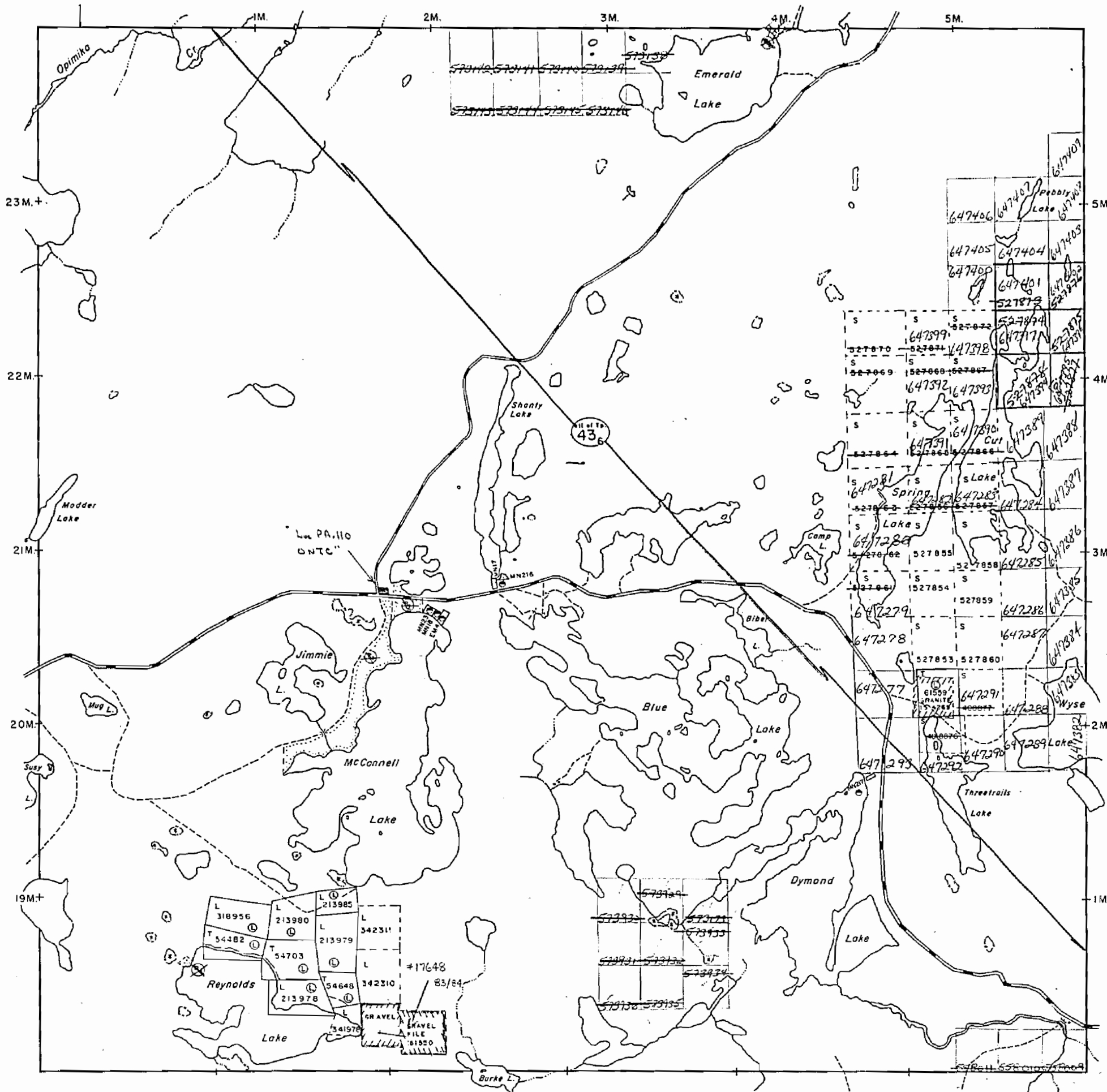
SURVEYS AND MAPPING BRANCH

LaSalle Twp. - M.980

Wyse Twp. - M.1187

Garrow Twp. - M.830

**MCAUSLAN**





Parkman Twp. - M.563

THE TOWNSHIP OF  
OF  
**MCAUSLAN**

DISTRICT OF  
NIPISSING

TIMISKAMING  
MINING DIVISION

SCALE: 1-INCH=40 CHAINS

LEGEND

- |                       |        |
|-----------------------|--------|
| FATENTED LAND         | Ⓟ      |
| CROWN LAND SALE       | C.S.   |
| LEASES                | Ⓞ      |
| LOCATED LAND          | Loc.   |
| LICENSE OF OCCUPATION | L.O.   |
| MINING RIGHTS ONLY    | M.R.O. |
| SURFACE RIGHTS ONLY   | S.R.O. |
| ROADS                 | —      |
| IMPROVED ROADS        | —      |
| KING'S HIGHWAYS       | —      |
| RAILWAYS              | —      |
| POWER LINES           | —      |
| MARSH OR MUSKEG       | —      |
| MINES                 | Ⓧ      |
| CANCELLED             | Ⓢ      |

NOTES

400' surface rights reservation around all lakes and rivers

Surface Rights reserved for Dept. of Lands & Forests under Sec.39(d) of the Mining Act shown thus: ~~XXXXXX~~ File: 60:07



PLAN NO. - **M.1003**

DEPARTMENT OF MINES

— ONTARIO —

LaSalle Twp. - M.980

Wyse Twp. - M.1187

Garrow Twp. - M.830

Parkman Twp. - M.563

THE TOWNSHIP OF  
OF

**MCAUSLAN**

DISTRICT OF  
NIPISSING

LARDER LAKE  
MINING DIVISION

SCALE: 1-INCH=40 CHAINS

**LEGEND**

PATENTED LAND	Ⓟ
CROWN LAND SALE	C.S.
LEASES	Ⓛ
LOCATED LAND	Loc.
LICENSE OF OCCUPATION	L.O.
MINING RIGHTS ONLY	M.R.O.
SURFACE RIGHTS ONLY	S.R.O.
ROADS	—
IMPROVED ROADS	—
KING'S HIGHWAYS	—
RAILWAYS	—
POWER LINES	—
MARSH OR MUSKEG	—
MINES	ⓧ
CANCELLED	C.

**NOTES**

42 of the Mining Act, 1967, is hereby reserved and all other provisions of the Act shall apply.

Surface Rights reserved for Dept. of Lands & Forests under Section 42 of the Mining Act shown thus [Symbol] File 160707

Areas withdrawn from staking under Section 42 of the Mining Act.

File	Date	Disposition
160707 Vol. 2	5/3/70	M.R.O.

S.R.O. WITHDRAWN FROM STAKING FOR ALL OF

LARDER LAKE MINING DIV. MCAUSLAN TWP. SEE LAND ROLL LETTER APRIL 24th LASALLE TWP

**RECEIVED**  
JUL 10 1972  
AM 7 18 19 10 11 12 13 14 15 16 PM

**MCAUSLAN**  
PLAN NO. - M.1003

ONTARIO  
DEPARTMENT OF MINES  
AND NORTHERN AFFAIRS

LaSalle Twp. - M.980

Wyse Twp. - M.1187

Garrow Twp. - M.830



Parkman Twp.-M.563

THE TOWNSHIP OF  
OF

**McAUSLAN**

DISTRICT OF  
NIPISSING

LARDER LAKE  
MINING DIVISION

SCALE: 1-INCH=40 CHAINS

LEGEND

PATENTED LAND	Ⓟ
CROWN LAND SALE	C.S.
LEASES	Ⓞ
LOCATED LAND	Loc.
LICENSE OF OCCUPATION	L.O.
MINING RIGHTS ONLY	M.R.O.
SURFACE RIGHTS ONLY	S.R.O.
ROADS	—
IMPROVED ROADS	—
KING'S HIGHWAYS	—
RAILWAYS	—
POWER LINES	—
MARSH OR MUSKEG	—
MINES	Ⓧ
CANCELLED	C

NOTES

and surface this reservation of and all  
other rights

Surface Rights reserved for Dept of Lands  
& Forests under Sec 34 of the Mining Act  
shown thus File 160707

Areas withdrawn from staking under Section  
42 of the Mining Act.

File	Date	Disposition
160707 Vol 2	3/3/70	M.R.O.

S.R.O. WITHDRAWN FROM  
STAKING FOR ALL OF

LARDER LAKE  
MINING DIV.  
**RECEIVED**  
JUL 10 1972  
AM 7 18 19 10 11 12 1 2 3 4 5 16 PM  
MCAUSLAN  
TWP.  
SEE LAND  
ROLL  
LETTER  
APRIL 26 1974  
LASALLE TWP

**McAUSLAN**  
PLAN NO.- M.1003

ONTARIO  
DEPARTMENT OF MINES  
AND NORTHERN AFFAIRS

LaSalle Twp.-M.980

Wyse Twp.-M.1187

Garrow Twp.-M.830

1003

# MC AUSLAN.

## DISTRICT OF NIPISSING

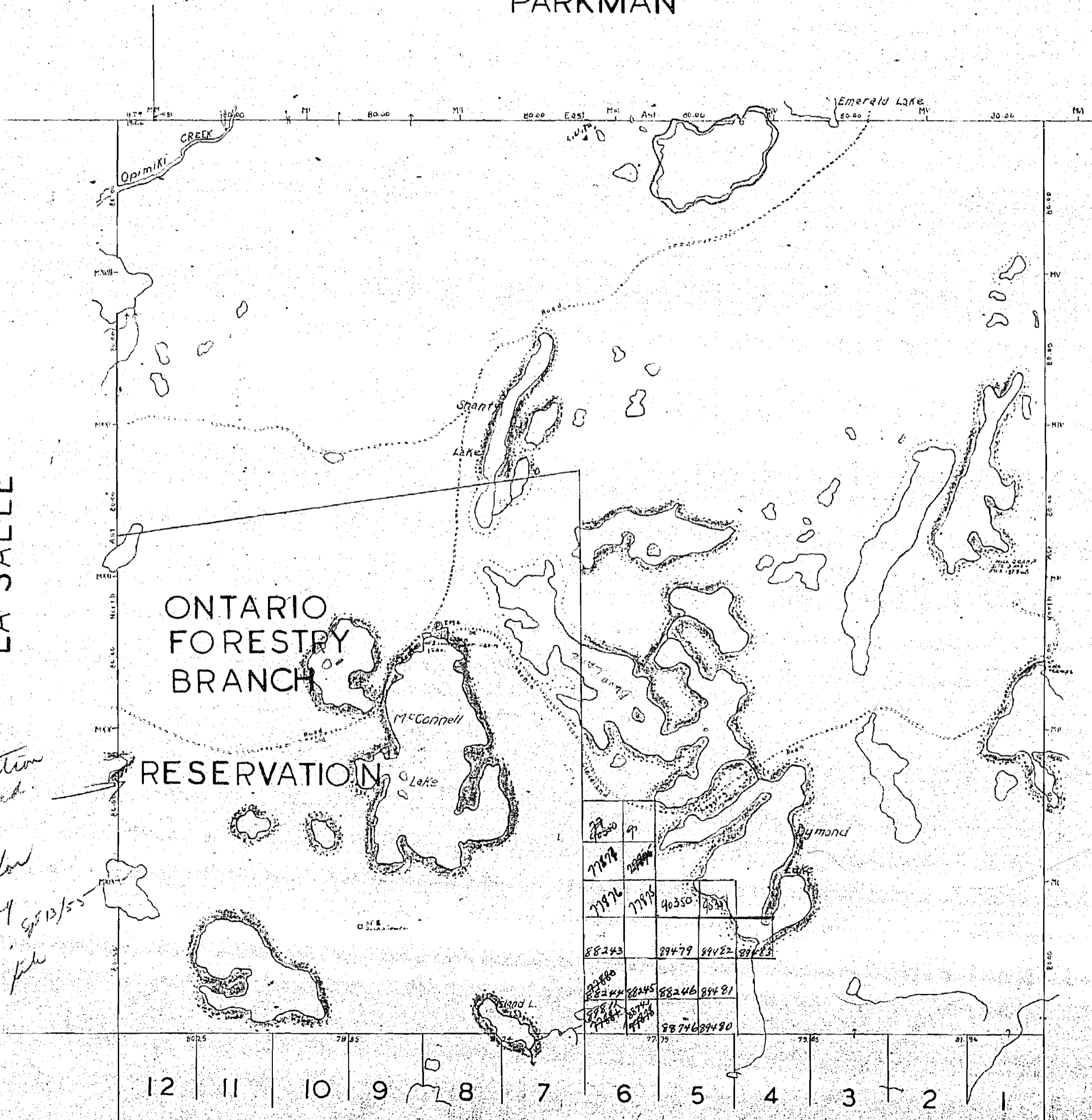
SCALE: 40 CHAINS = 1 INCH.



### PARKMAN

LA SALLE

WYSE



*Reservation  
Cancelled.*

*Open for  
stocking  
J.F.M. 5/13/55  
Jimp. file*

77030	97		
77078	75096		
77076	77076	90350	90351
88243	89479	89482	89483
82480	82444	82445	82446
82447	82448	82449	82450
82451	82452	82453	82454
82455	82456	82457	82458
82459	82460	82461	82462
82463	82464	82465	82466
82467	82468	82469	82470
82471	82472	82473	82474
82475	82476	82477	82478
82479	82480	82481	82482
82483	82484	82485	82486
82487	82488	82489	82490

### GARROW

Map by P.L.S.A. Niven 1891  
1883  
W.R. Burke 1890  
E.W. Neelands 1929

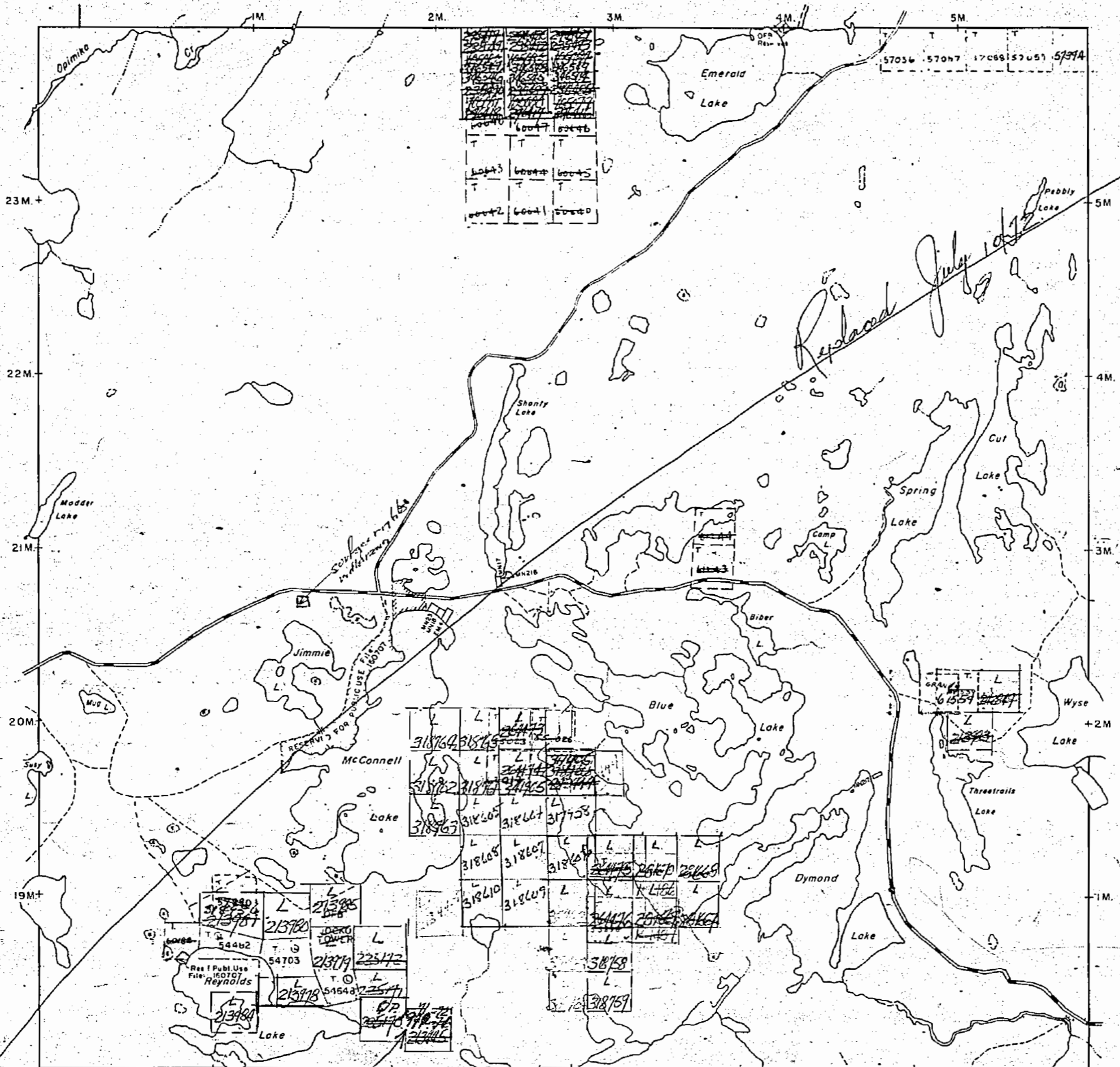
Surface Reservations ~~200~~ <sup>400</sup> wide. by Dept. of L.A.  
Shown hereon + this

# M 1003

Parkman Twp.-M.563

LaSalle Twp.-M.980

Wyse Twp.-M.1187



THE TOWNSHIP OF

MC AUSLAN

DISTRICT OF NIPISSING

LARDER LAKE MINING DIVISION

SCALE: 1-INCH=40 CHAINS

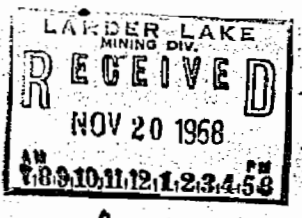
LEGEND

PATENTED LAND	⊙
CROWN LAND SALE	C.S.
LEASES	⊕
LOCATED LAND	Loc
LICENSE OF OCCUPATION	L.O.
MINING RIGHTS ONLY	M.R.O.
SURFACE RIGHTS ONLY	S.R.O.
ROADS	—
IMPROVED ROADS	—
KING'S HIGHWAYS	—
RAILWAYS	—
POWER LINES	—
MARSH, OR MUSKEG	—
MINES	X
CANCELLED	C.

NOTES

400' surface hole excavation around all lakes at 10' intervals

Surface Rights reserved for Dept. of Lands & Forests under Sec 39 of the Mining Act shown thus [Symbol] File 160707



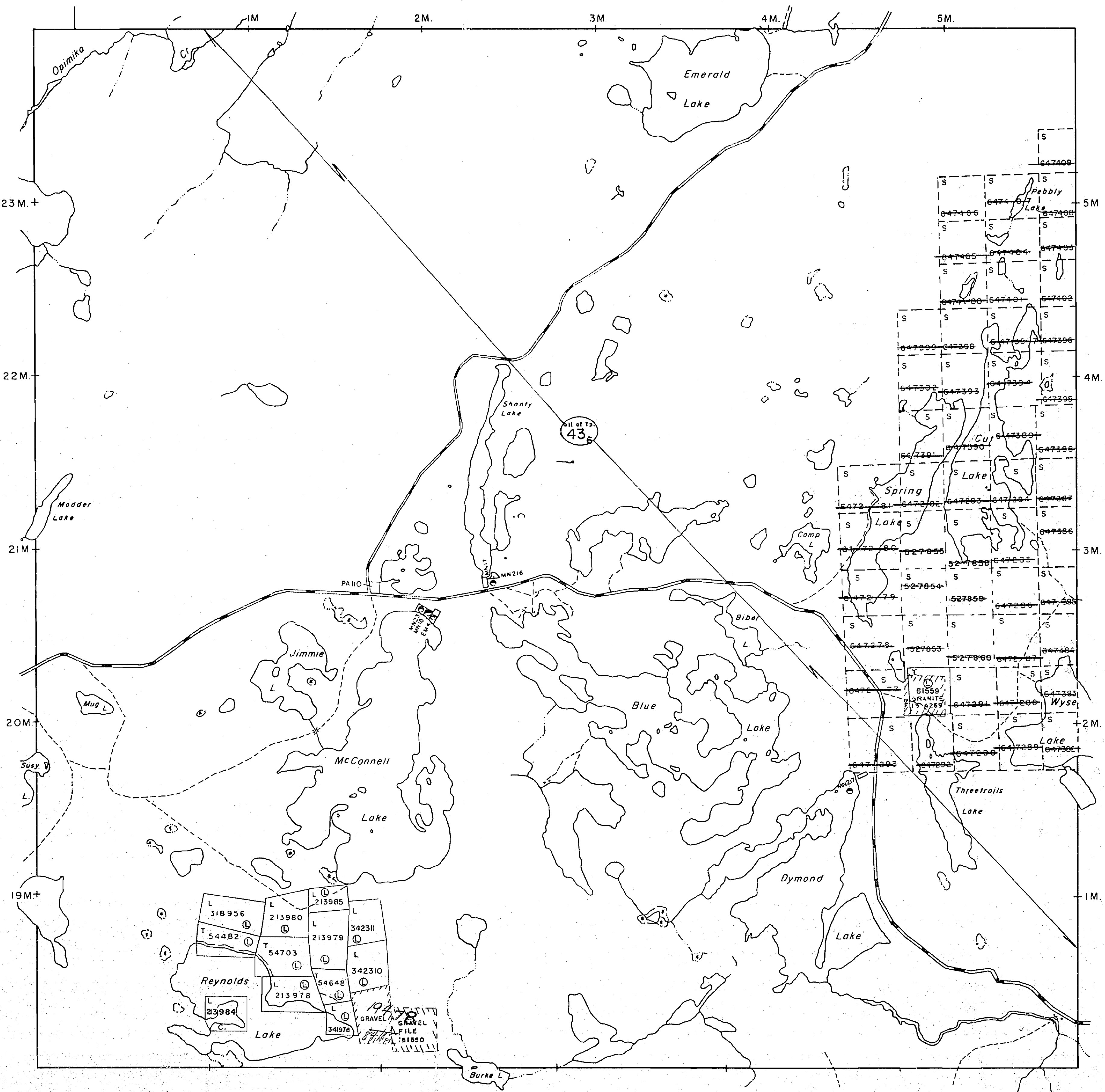
PLAN NO.- M.1003

DEPARTMENT OF MINES

— ONTARIO —

\* Aug. 3/83

Parkman Twp. - M.563



THE TOWNSHIP  
OF  
**McAUSLAN**

DISTRICT OF  
NIPISSING

**SUDBURY**  
MINING DIVISION

SCALE: 1-INCH=40 CHAINS

LEGEND

- |                       |        |
|-----------------------|--------|
| PATENTED LAND         | Ⓟ      |
| CROWN LAND SALE       | C.S.   |
| LEASES                | Ⓛ      |
| LOCATED LAND          | Loc.   |
| LICENSE OF OCCUPATION | L.O.   |
| MINING RIGHTS ONLY    | M.R.O. |
| SURFACE RIGHTS ONLY   | S.R.O. |
| ROADS                 | —      |
| IMPROVED ROADS        | —      |
| KING'S HIGHWAYS       | —      |
| RAILWAYS              | —      |
| POWER LINES           | —      |
| MARSH OR MUSKEG       | * *    |
| MINES                 | X      |
| CANCELLED             | C.     |
| PATENTED FOR S. R. O. | Ⓟ      |

NOTES

400' surface rights reservation along the shores of all lakes and rivers.

AREAS WITHDRAWN FROM STAKING

Section	Date	Disposition	File	Order No.

Ⓟ 43 (R.S.O. '70) 26/4/74 ALL of Tp. S.R.O. 160707, v.4 - W.18-74

\* IN SERVICE PRIOR TO 1983 - JCM

*McAuslan*

PLAN NO. - **M.1003**

ONTARIO  
MINISTRY OF NATURAL RESOURCES  
SURVEYS AND MAPPING BRANCH

Garrow Twp. - M.830

LaSalle Twp. - M.980

Wyse Twp. - M.1187

