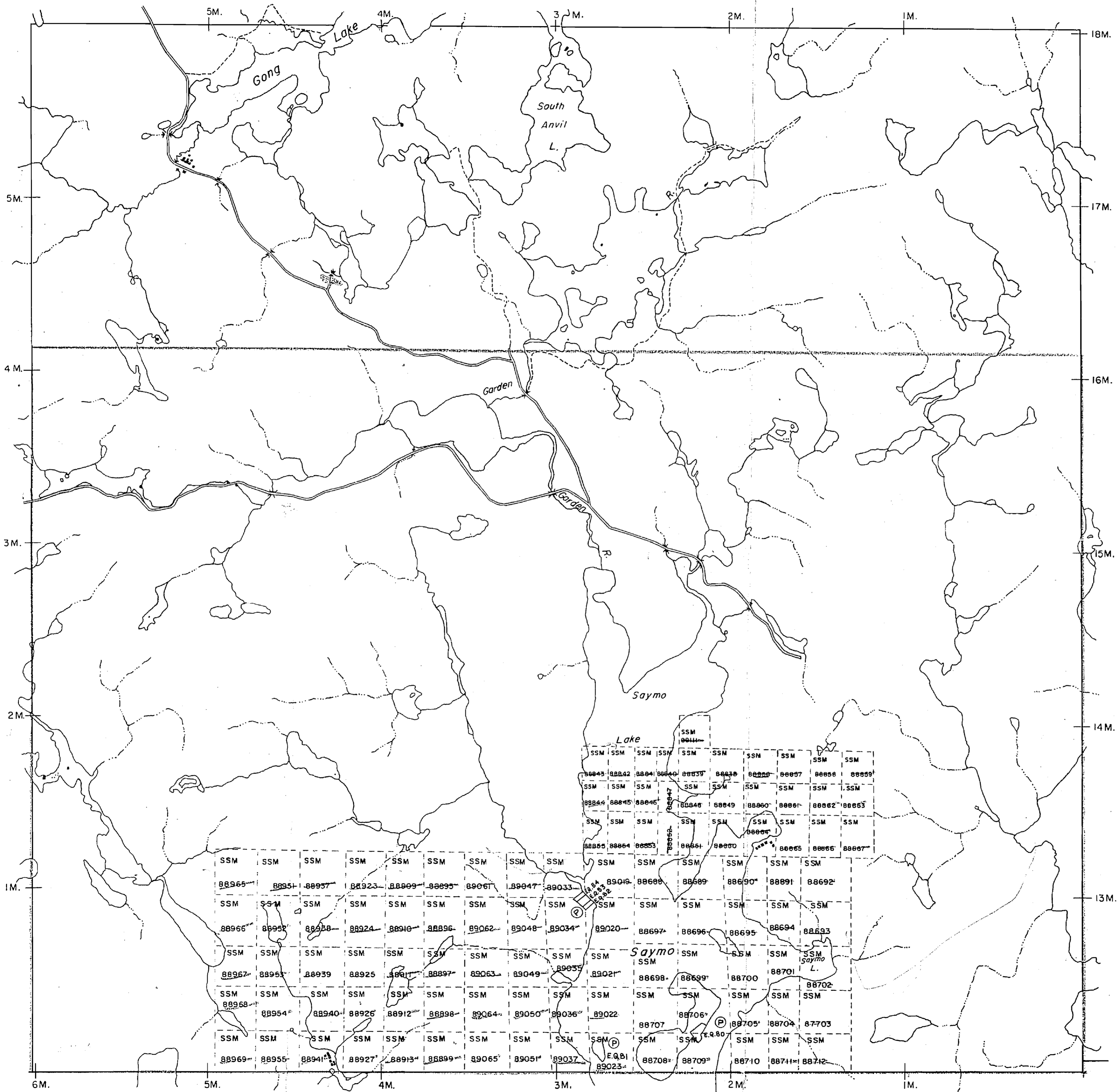


TWP. 6.G. M.1427



TWP. 5.H. M.1727

TWP. 5.F. M.1423

TWP. 4.G. M.1417

THE TOWNSHIP

5G (McLLVEEN)

DISTRICT OF ALGOMA

SAULT STE. MARIE MINING DIVISION

SCALE: 1-INCH = 40 CHAINS

LEGEND

PATENTED LAND	Ⓟ
CROWN LAND SALE	C.S.
LEASES	Ⓛ
LOCATED LAND	Loc.
LICENSE OF OCCUPATION	L.O.
MINING RIGHTS ONLY	M.R.O.
SURFACE RIGHTS ONLY	S.R.O.
ROADS	— — — — —
IMPROVED ROADS	— — — — —
KING'S HIGHWAYS	— — — — —
RAILWAYS	— — — — —
POWER LINES	— — — — —
MARSH OR MUSKEG	— — — — —
MINES	Ⓜ
CANCELLED	C.

NOTES

400' Surface Rights Reservation around all lakes and rivers.

Area outlined in red covered by O.P.# 1005-71 Weyerhaeuser Canada Ltd. - see files for more info.

DATE OF ISSUE
SEP 18 1967

ON ONTARIO DEPT. OF MINES
MINING LANDS BR.

THIS MAP FOR CHECKING PURPOSES ONLY - MUST NOT BE SOLD.

RECEIVED
2 1967

G. 3139
PLAN NO. ~~M.1427~~

DEPARTMENT OF MINES
- ONTARIO -

HANDLEMAN Tp. M.1427

THE TOWNSHIP

MCILVEEN

(Tp. 5G)

DISTRICT OF ALGOMA

SAULT STE. MARIE
MINING DIVISION

SCALE: 1-INCH = 40 CHAINS

LEGEND

PATENTED LAND	⊙
CROWN LAND SALE	⊙
LEASES	⊙
LOCATED LAND	⊙
LICENSE OF OCCUPATION	⊙
MINING RIGHTS ONLY	M.R.O.
SURFACE RIGHTS ONLY	S.R.O.
ROADS	—
IMPROVED ROADS	—
KING'S HIGHWAYS	—
RAILWAYS	—
POWER LINES	—
MARSH OR MUSKES	—
MINES	⊙
CANCELLED	⊙

NOTES

400' Surface Rights Reservation around all lakes and rivers.

Area outlined in red is covered by Unspecified Pit Permit # 2 issued NEVERHAUSER CANADA LTD. (See file for details.)

Ⓜ Surface Rights withdrawn on staking. See ORDER # 11752 - Sault Ste. Marie dated Feb. 11/53.



G.3139

PLAN NO. ~~M.1424~~

ONTARIO

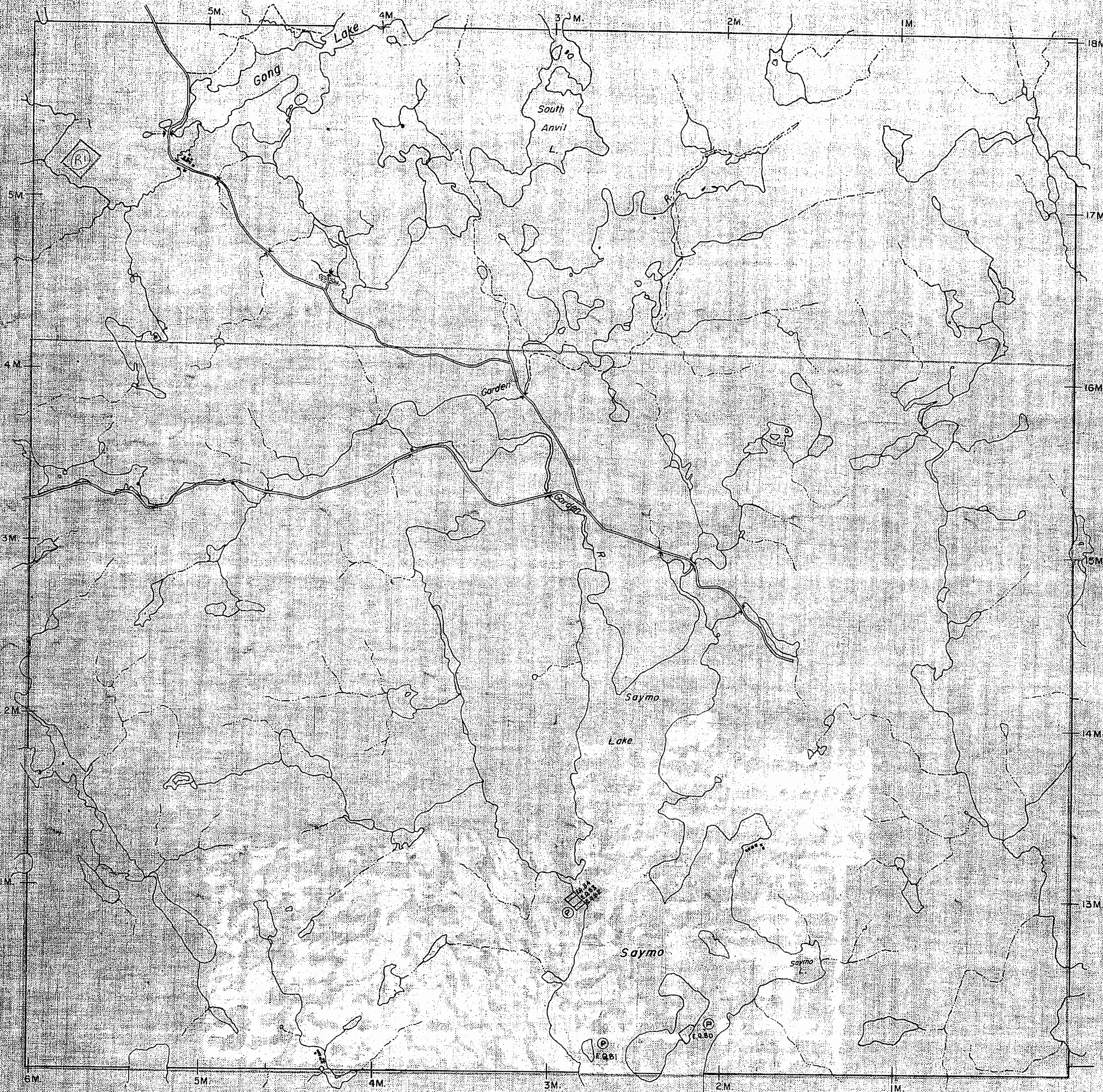
MINISTRY OF NATURAL RESOURCES

SURVEYS AND MAPPING BRANCH

MCILVEEN Tp. M.1423

PINE Tp. M.1727

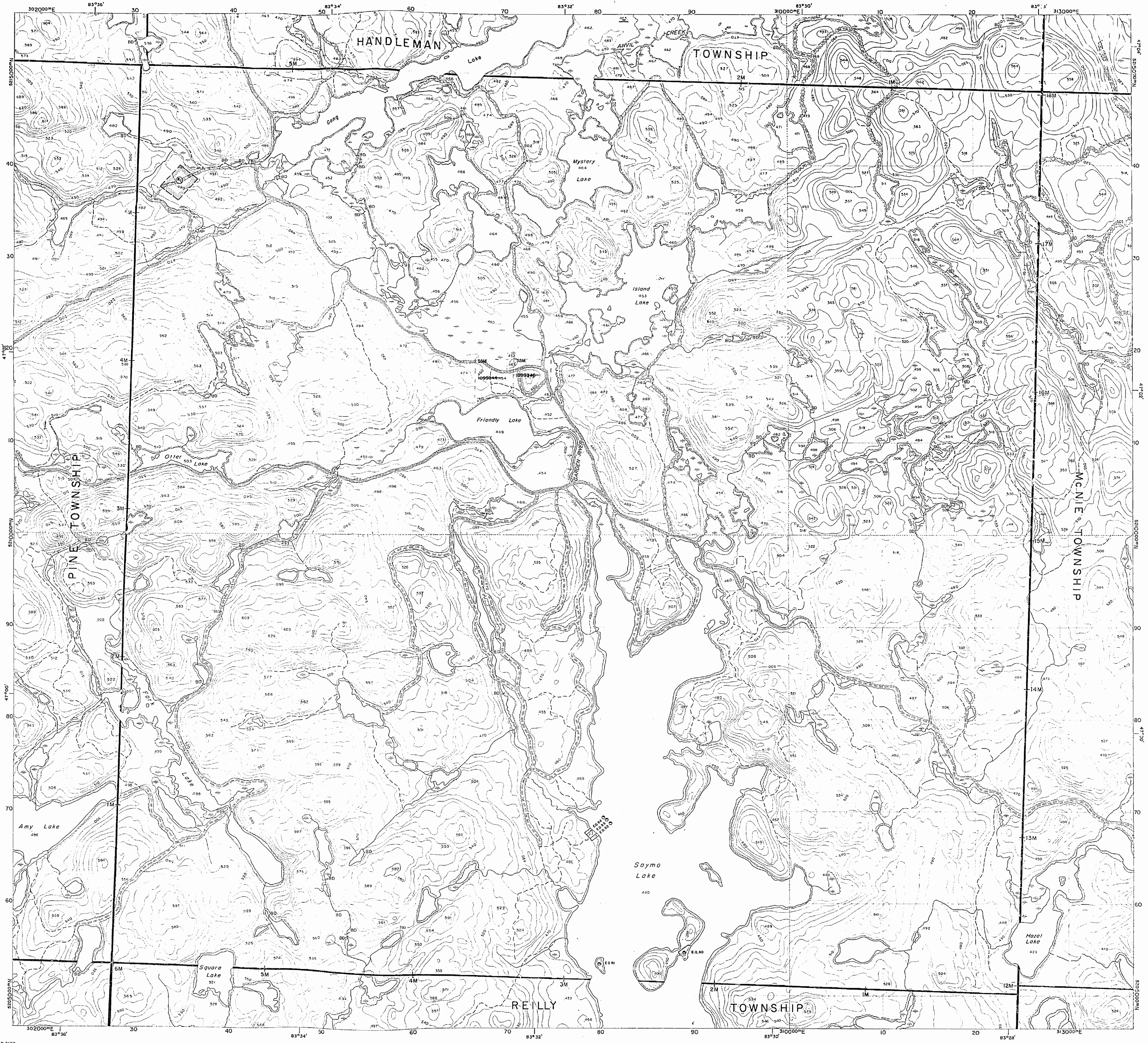
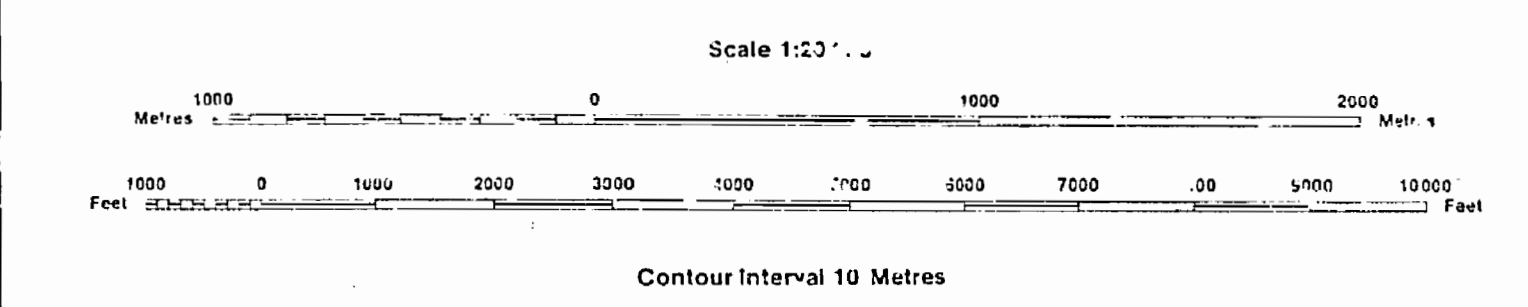
REILLY Tp. M.1417



INDEX TO LAND DISPOSITION

PLAN
G-3139
 TOWNSHIP
MCILVEEN

M.I.R. ADMINISTRATION DISTRICT
SAULT STE. MARIE
 MINING DIVISION
SAULT STE. MARIE
 LAND RIGHTS REGISTRY DIVISION
ALGOMA



AREAS WITHDRAWN FROM DISPOSITION

MRO - Mining Rights Only
 SRO - Surface Rights Only
 M+S - Mining and Surface Rights

Description	Order No.	Date	Disposition
	W 11/82	17/2/82	S.R.O.
			188536

SYMBOLS

- Boundary
- Township, Meridian, Baseline
- Road allowance; surveyed
- shoreline
- Lot/Concession; surveyed
- unsurveyed
- Parcel; surveyed
- unsurveyed
- Right-of-way; road
- railway
- utility
- Reservation
- Cliff, Fit, Pile
- Contour
- Interpolated
- Approximate
- Depression
- Control point (horizontal)
- Flooded land
- Mine head frame
- Pipeline (above ground)
- Railway; single track
- double track
- abandoned
- Road; highway, county, township
- access
- trail, bush
- Shoreline (original)
- Transmission line
- Wooded area

RECEIVED
 JUN 7 1988
 7:54 PM '88

DISPOSITION OF CROWN LANDS

- Patent
- Surface & Mining Rights
- Surface Rights Only
- Mining Rights Only
- Lease
- Surface & Mining Rights
- Surface Rights Only
- Mining Rights Only
- Licence of Occupation
- Order-in-Council
- Cancelled
- Reservation
- Sand & Gravel

RECEIVED
 JUN 7 1991
 1991-92

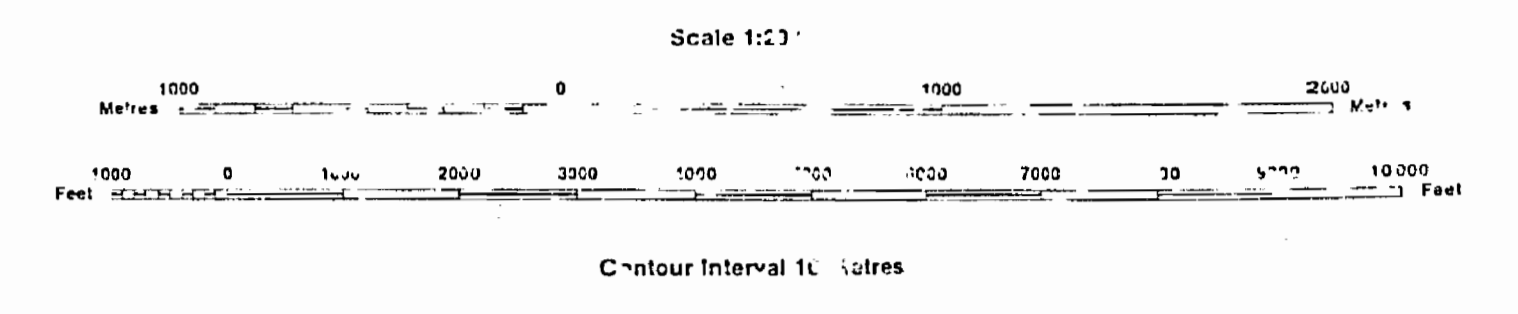
The 1975 Magnetic Bearing
 Approx. 6% Annual Change
 decreasing

THE INFORMATION THAT
 APPEARS ON THIS MAP
 HAS BEEN COMPILED
 FROM VARIOUS SOURCES.
 AND ACCURACY IS NOT
 GUARANTEED. THOSE
 WISHING TO STAKE MINING
 CLAIMS SHOULD CONSULT
 WITH THE MINING
 RECORDER, MINISTRY OF
 NORTHERN DEVELOPMENT
 AND MINES, FOR ADDITIONAL
 INFORMATION ON THE STATUS OF THE
 LANDS SHOWN HEREON.

INDEX TO LAND DISPOSITION

PLAN
G-3139
TOWNSHIP
MCILVEEN

SAULT STE. MARIE
MINING DIVISION
SAULT STE. MARIE
LAND TITLES/HISTORICAL DIVISION
ALGOMA



AREAS WITHDRAWN FROM DISPOSITION

MRO - Mining Rights Only
SRO - Surface Rights Only
M + S - Mining and Surface Rights

Description	Order No.	Date	Disposition
	1111	7/2/88	S.R.O.
			188536

SYMBOLS

- Boundary
- Township, Meridian, Baseline
- Road allowance; surveyed
- shoreline
- Lot/Concession; surveyed
- unsurveyed
- Parcel; surveyed
- unsurveyed
- Right-of-way; road
- railway
- utility
- Reservation
- Cliff, Fill, Pile
- Contour
- Interpolated
- Approximate
- Depression
- Control point (horizontal)
- Flooded land
- Mine head frame
- Pipeline (above ground)
- Railway; single track
- double track
- abandoned
- Road; highway, county, township
- access
- trail, bush
- Shoreline (original)
- Transmission line
- Wooded area

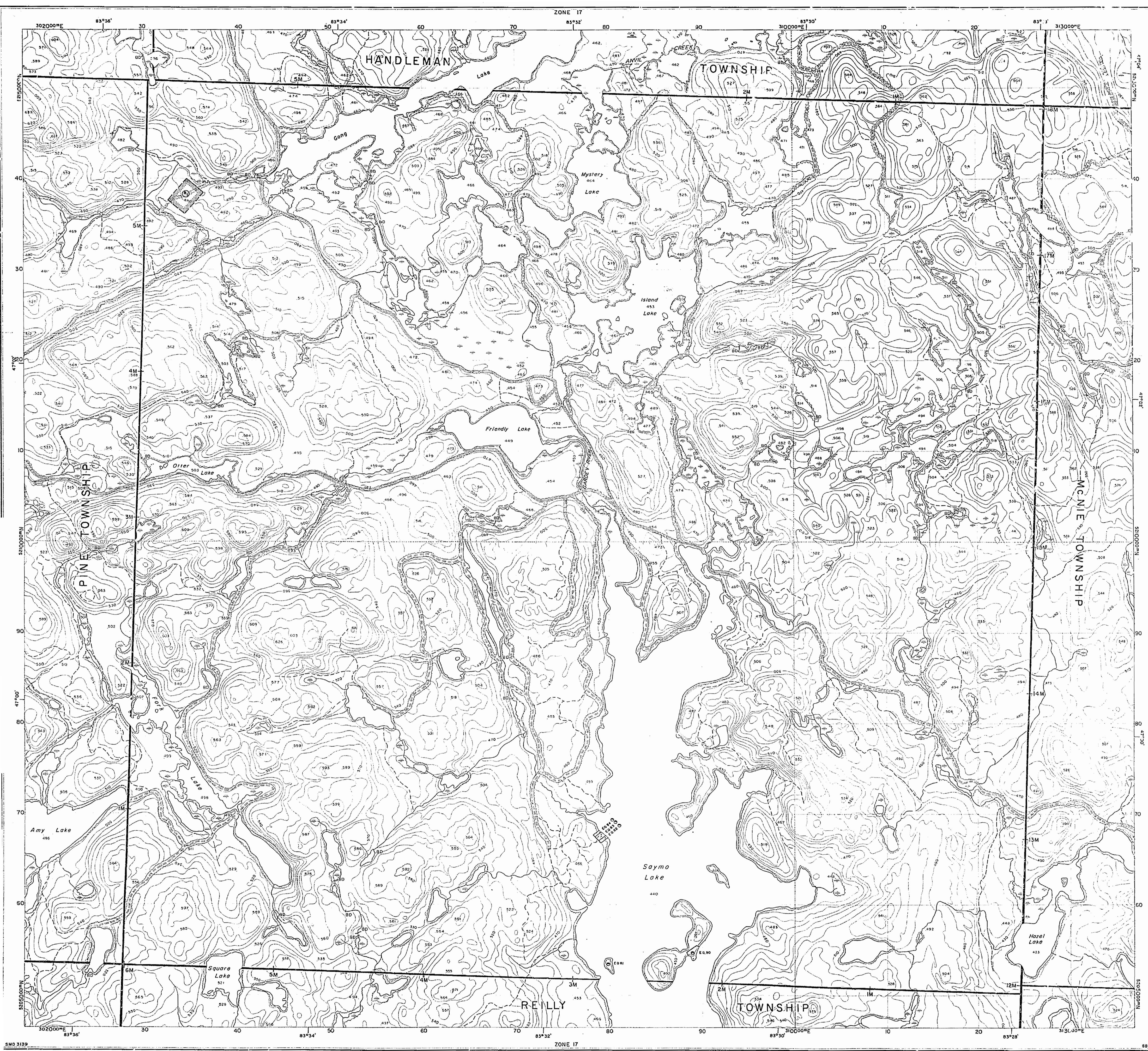
DISPOSITION OF CROWN LANDS

- Patent
- Surface & Mining Rights
 - Surface Rights Only
 - Mining Rights Only
- Lease
- Surface & Mining Rights
 - Surface Rights Only
 - Mining Rights Only
- Licence of Occupation
- Order-in-Council
- Cancelled
- Reservation
- Sand & Gravel

TOWNSHIP SUBJECT TO FORESTRY OPERATIONS
1991-92

THE INFORMATION THAT APPEARS ON THIS MAP HAS BEEN COMPILED FROM VARIOUS SOURCES, AND ACCURACY IS NOT GUARANTEED. THOSE WISHING TO STAKE MINING CLAIMS SHOULD CONSULT WITH THE MINING RECORDER, MINISTRY OF NORTHERN DEVELOPMENT AND MINES, FOR ADDITIONAL INFORMATION ON THE STATUS OF THE LANDS SHOWN HEREON.

The 1975 Magnetic Bearing Approx. 62W Annual Change decreasing 0.1



HANDLEMAN Tp. M.1427

THE TOWNSHIP
MCILVEEN

(Tp. 5G)

DISTRICT OF
ALGOMA

SAULT STE. MARIE
MINING DIVISION

SCALE: 1-INCH = 40 CHAINS

LEGEND

PATENTED LAND	⊙
CROWN LAND SALE	C.S.
LEASES	⊕
LOCATED LAND	Loc
LICENSE OF OCCUPATION	L.O.
MINING RIGHTS ONLY	M.R.O.
SURFACE RIGHTS ONLY	S.R.O.
ROADS	—
IMPROVED ROADS	—
KING'S HIGHWAYS	—
RAILWAYS	—
POWER LINES	—
MARSH OR MUSKEG	—
MINES	⊙
CANCELLED	⊙

NOTES

400 Surface Rights Reservation ground
all lakes and rivers.

Areas withdrawn from staking under Section
36 of the Mining Act (R.S.O. 1980)

Order No.	File	Date	Disposition
51	W.11/82	188536	17/2/82

G.3139

PLAN NO. ~~M.1424~~

ONTARIO

MINISTRY OF NATURAL RESOURCES

SURVEYS AND MAPPING BRANCH

PINE Tp. M.1727

MCNIE Tp. M.1423

REILLY Tp. M.1417

Replaced by mylar July 9/84

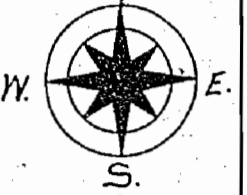
1424

PLAN OF
TWP. 5 G. (McLUGEN)

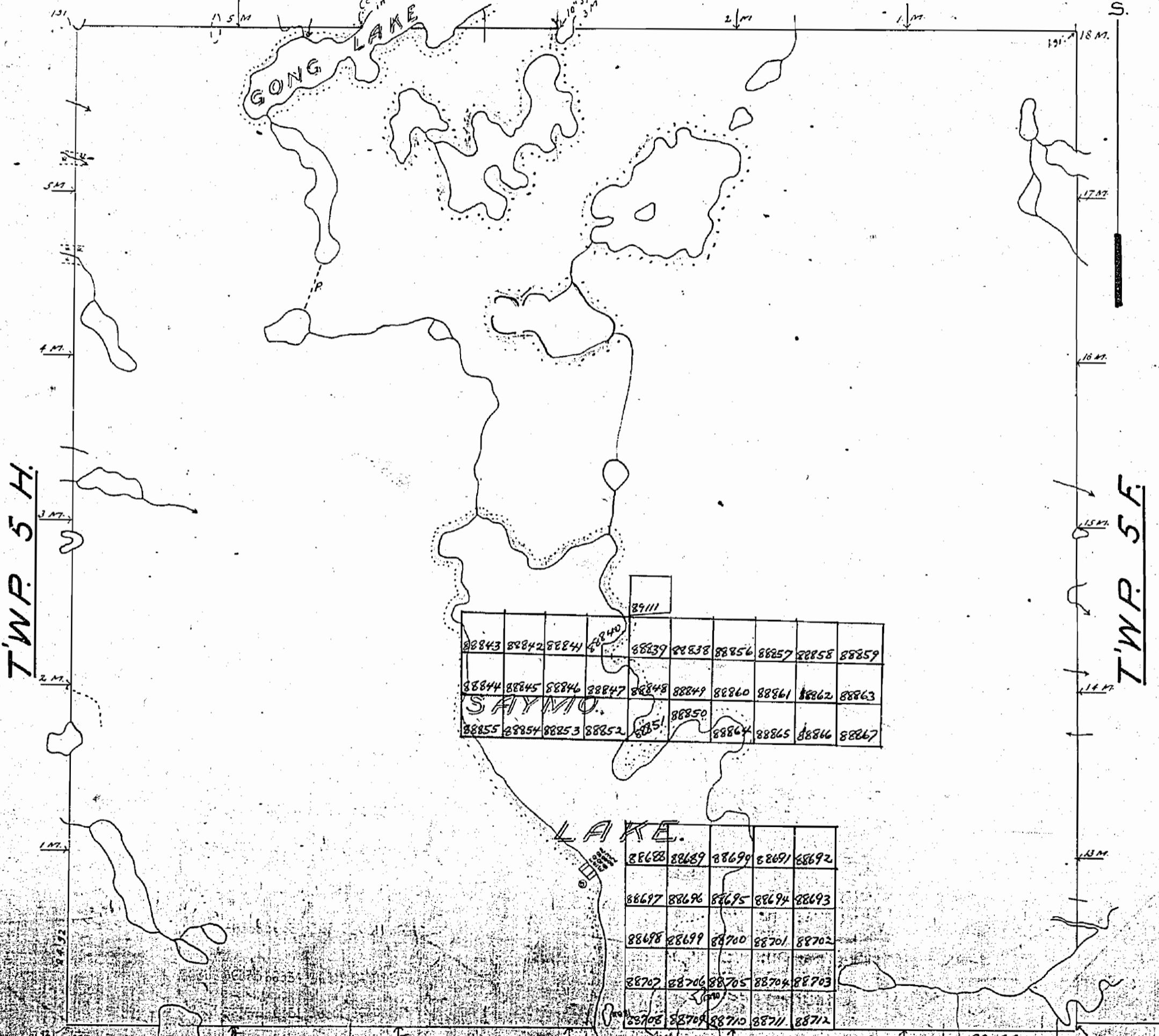
M. 1424

MISSISSAGI PROVINCIAL FOREST
SAULT STE. MARIE MINING DIVISION.
DISTRICT OF ALGOMA

Scale, 40 chains to an inch.



TWP. 6 G.



88843	88842	88841	88840	88839	88838	88836	88827	88828	88829
88844	88845	88846	88847	88848	88849	88850	88861	88862	88863
88855	88854	88853	88852	88851	88850	88864	88865	88866	88867

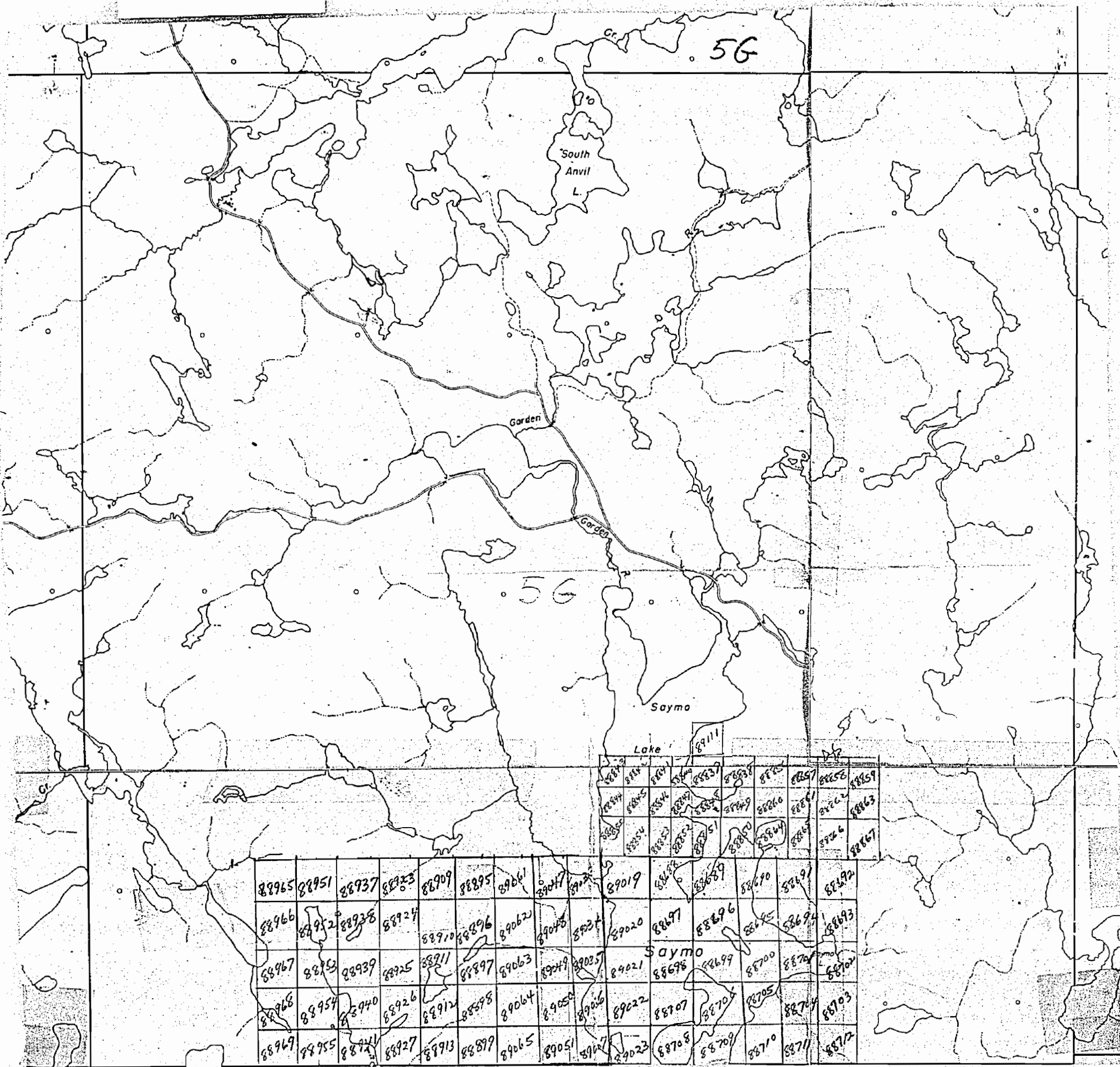
88698	88699	88700	88701	88702
88697	88696	88695	88694	88693
88707	88706	88705	88704	88703
88708	88709	88710	88711	88712

TWP. 4 G.

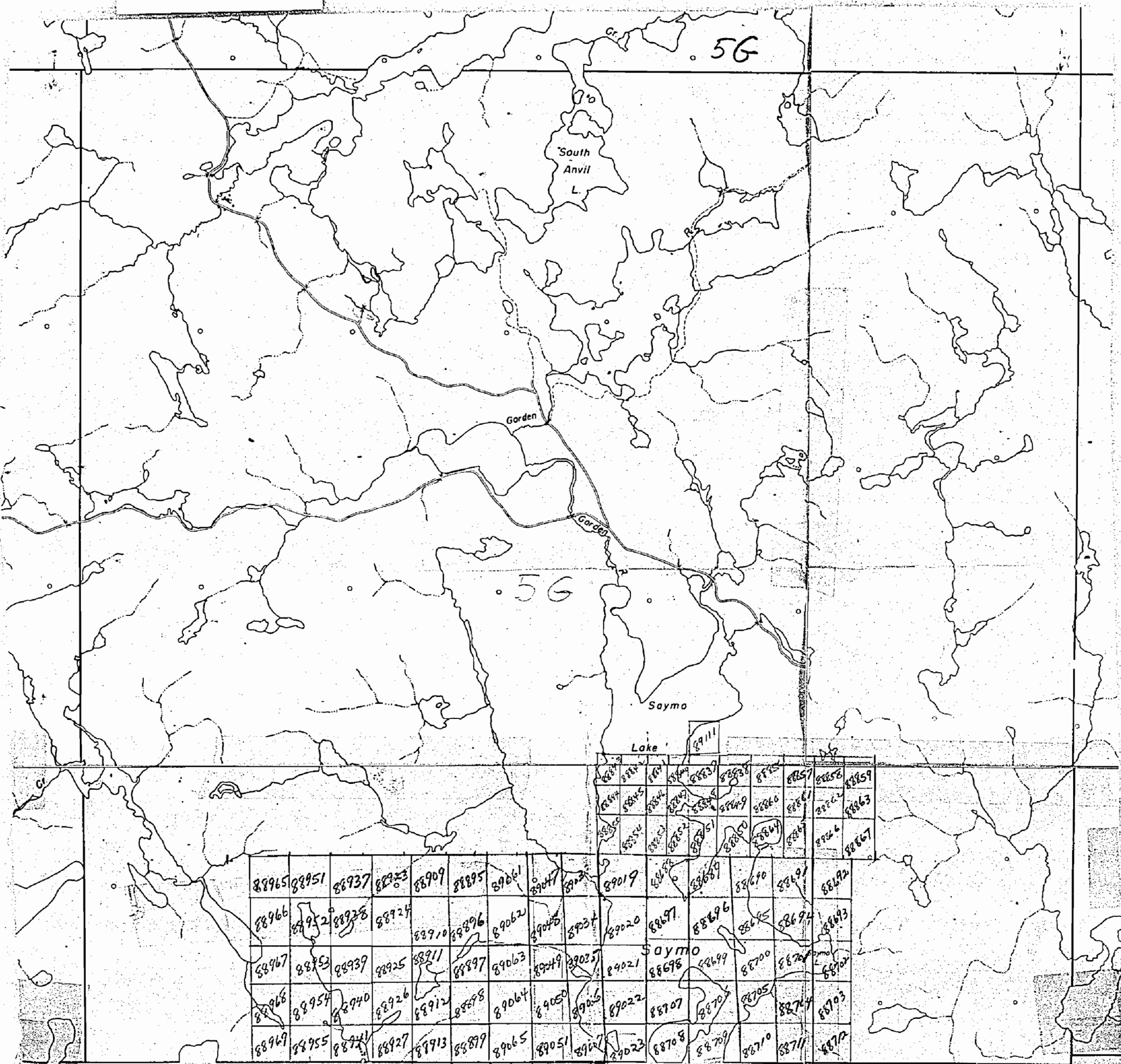
Surface reservations 400 wide by Dept of L.I.F.
shown in red on this map

TOWNSHIP 5 G. M. 1424

1424



1424



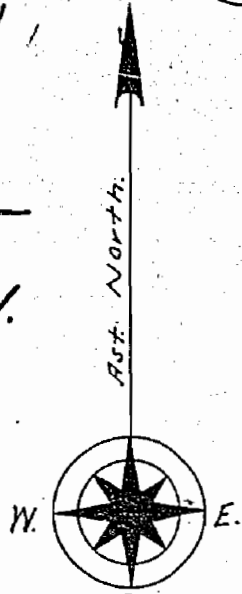
1424

PLAN OF
TWP. 5 G. (McLUGEN)

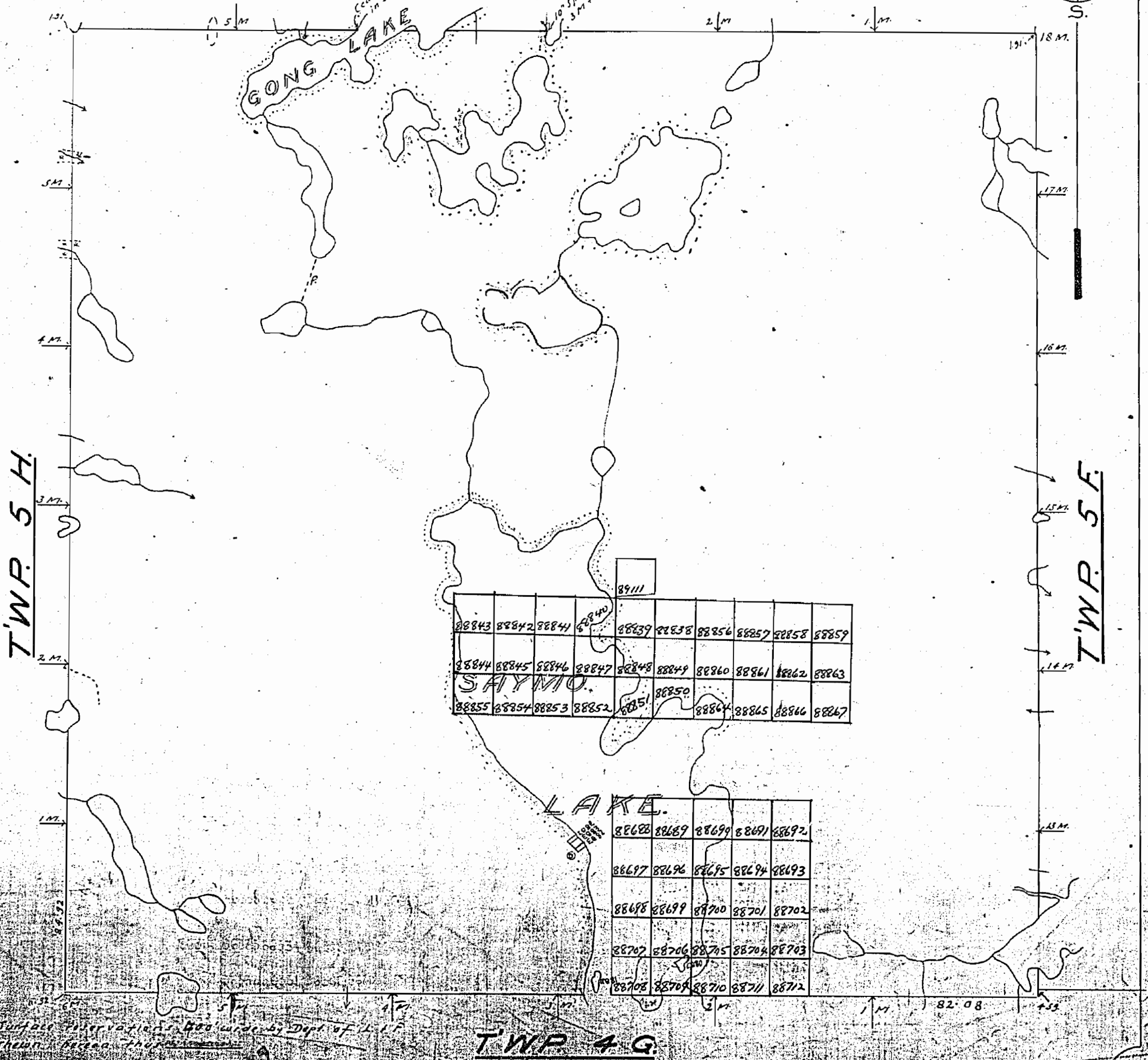
M. 1424

MISSISSAGI PROVINCIAL FOREST
SAULT STE. MARIE MINING DIVISION.
DISTRICT OF ALGOMA

Scale 40 chains to an inch.



TWP. 6 G.



88843	88842	88841	88840	88839	88838	88856	88857	88858	88859
88844	88845	88846	88847	88848	88849	88860	88861	88862	88863
88855	88854	88853	88852	88851	88850	88864	88865	88866	88867

88688	88689	88690	88691	88692
88697	88696	88695	88694	88693
88698	88699	88700	88701	88702
88707	88706	88705	88704	88703
88708	88709	88710	88711	88712

TWP. 4 G.

Surface elevations 400' wide by Dept of L.P.F.
shown based on the following

TOWNSHIP 5 G. M.L.S.

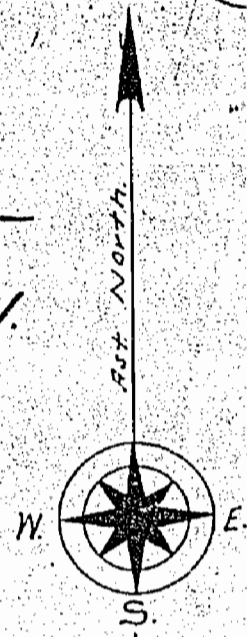
1424

PLAN OF TWP. 5 G.

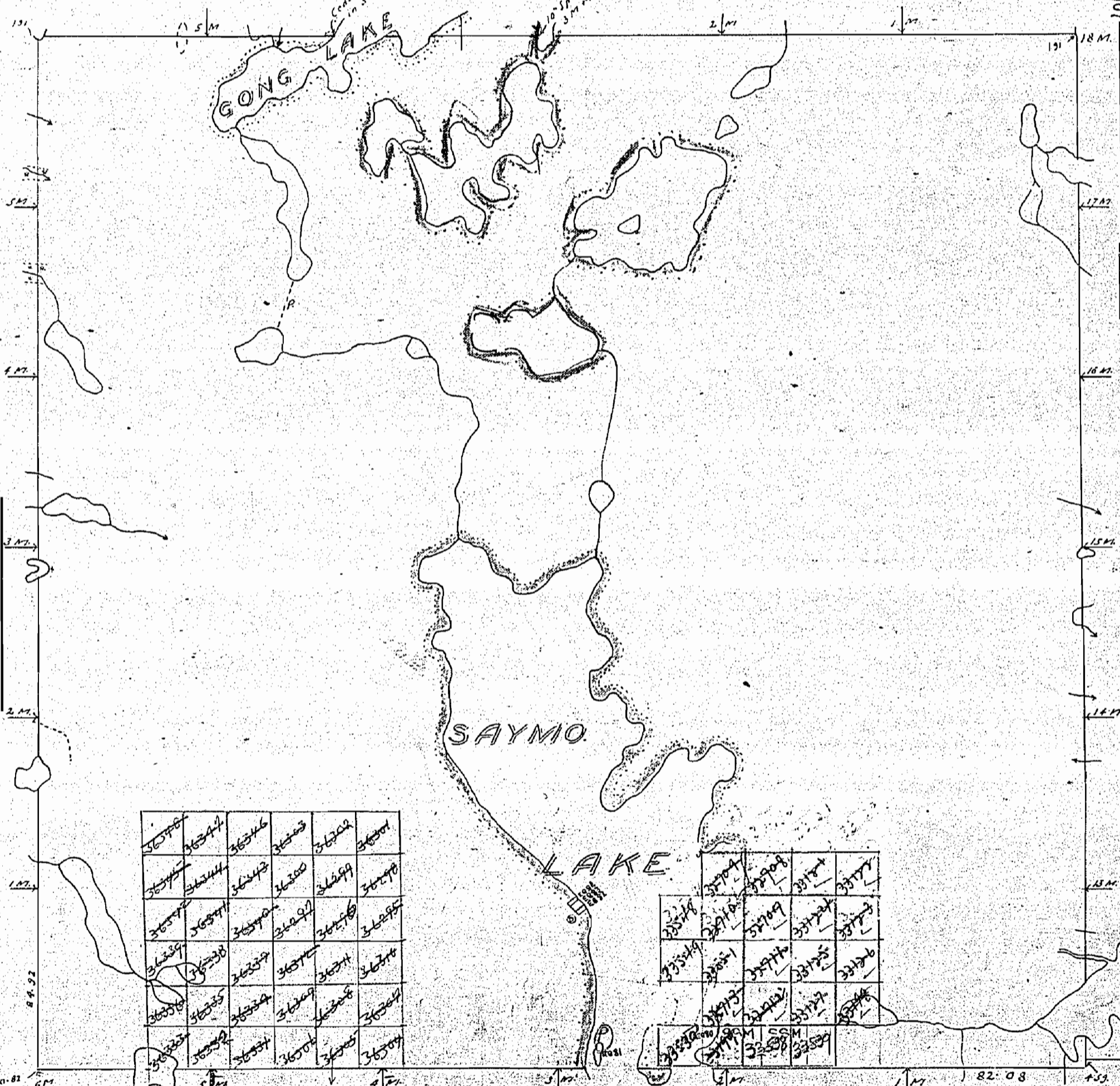
M. 1424
(McLUEEN)

MISSISSAGI PROVINCIAL FOREST
SAULT STE. MARIE MINING DIVISION
DISTRICT OF ALGOMA

Scale 40 chains to an inch.



TWP. 6 G.



36376	36344	36346	36353	36352	36351
36345	36344	36343	36350	36349	36348
36347	36347	36346	36347	36346	36345
36349	36338	36337	36340	36339	36338
36339	36335	36334	36339	36338	36337
36337	36332	36331	36334	36333	36332
36333	36331	36330	36331	36330	36329

33704	33708	33704	33704
33704	33704	33704	33704
33704	33704	33704	33704
33704	33704	33704	33704
33704	33704	33704	33704
33704	33704	33704	33704
33704	33704	33704	33704

Surface reservations 400' wide by Dept of L. & F.
shown hereon thus

ISLAND PAT.
IN SAIMO LAKE

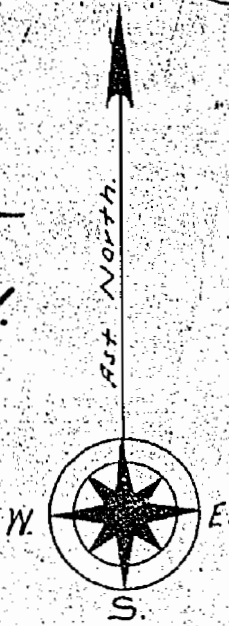
TWP. 4 G.

1424

PLAN OF
TWP. 5 G. m.1424
(McLUEEN)

MISSISSAGI PROVINCIAL FOREST
SAULT STE. MARIE MINING DIVISION.
DISTRICT OF ALGOMA

Scale 40 chains to an inch.



TWP. 6 G.

TWP. 5 H.

TWP. 5 F.

SAYMO.

LAKE

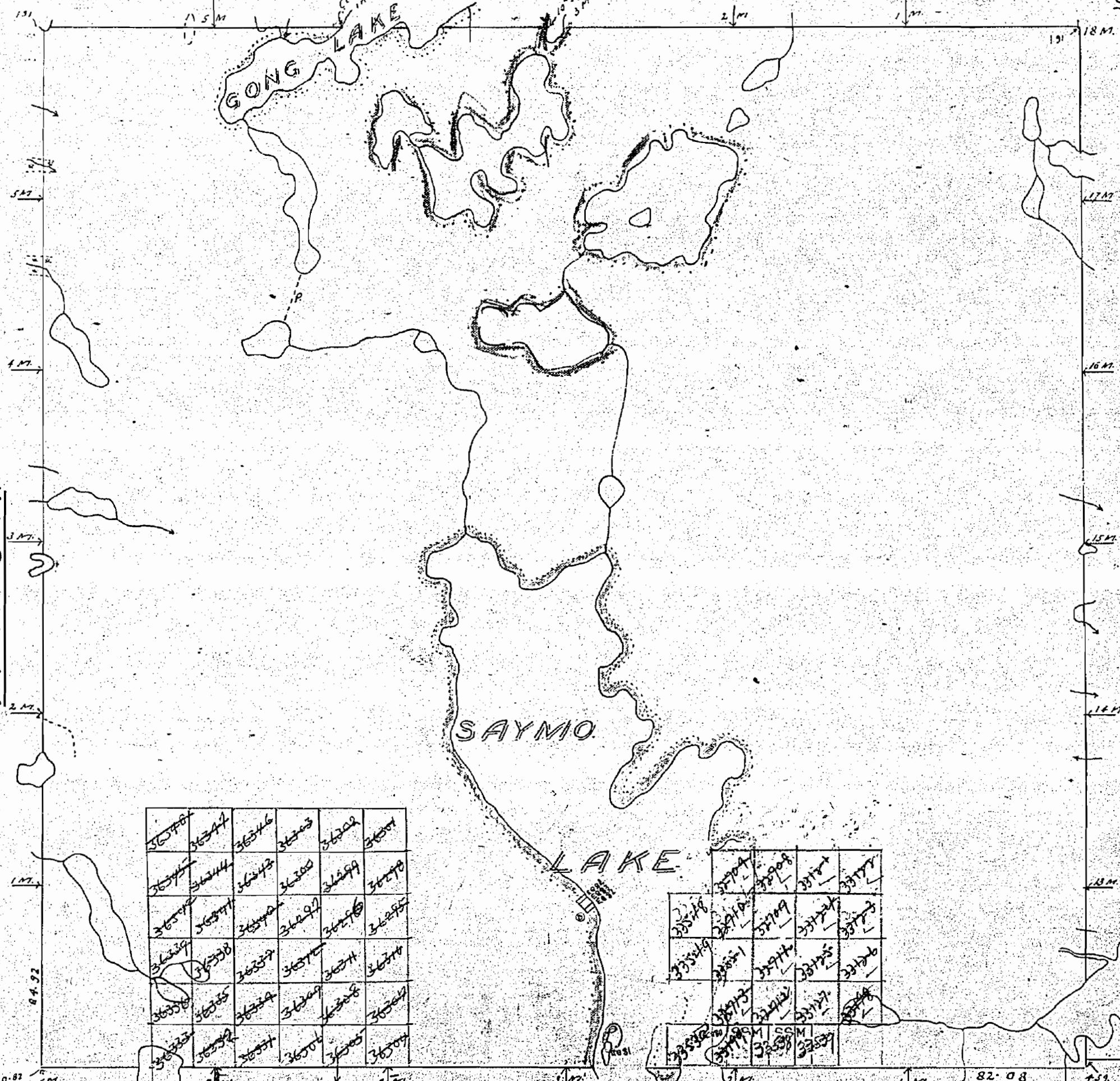
TWP. 4 G.

36378	36344	36346	36343	36342	36341
36347	36344	36343	36340	36339	36338
36345	36341	36339	36337	36336	36335
36349	36338	36337	36337	36334	36334
36350	36335	36334	36334	36333	36332
36353	36332	36331	36330	36329	36328

37004	37008	37007	37007
37008	37008	37008	37007
37009	37009	37009	37008
37010	37010	37010	37009
37011	37011	37011	37010
37012	37012	37012	37011
37013	37013	37013	37012
37014	37014	37014	37013
37015	37015	37015	37014
37016	37016	37016	37015
37017	37017	37017	37016
37018	37018	37018	37017
37019	37019	37019	37018
37020	37020	37020	37019
37021	37021	37021	37020
37022	37022	37022	37021
37023	37023	37023	37022
37024	37024	37024	37023
37025	37025	37025	37024
37026	37026	37026	37025
37027	37027	37027	37026
37028	37028	37028	37027
37029	37029	37029	37028
37030	37030	37030	37029
37031	37031	37031	37030
37032	37032	37032	37031
37033	37033	37033	37032
37034	37034	37034	37033
37035	37035	37035	37034
37036	37036	37036	37035
37037	37037	37037	37036
37038	37038	37038	37037
37039	37039	37039	37038
37040	37040	37040	37039
37041	37041	37041	37040
37042	37042	37042	37041
37043	37043	37043	37042
37044	37044	37044	37043
37045	37045	37045	37044
37046	37046	37046	37045
37047	37047	37047	37046
37048	37048	37048	37047
37049	37049	37049	37048
37050	37050	37050	37049
37051	37051	37051	37050
37052	37052	37052	37051
37053	37053	37053	37052
37054	37054	37054	37053
37055	37055	37055	37054
37056	37056	37056	37055
37057	37057	37057	37056
37058	37058	37058	37057
37059	37059	37059	37058
37060	37060	37060	37059
37061	37061	37061	37060
37062	37062	37062	37061
37063	37063	37063	37062
37064	37064	37064	37063
37065	37065	37065	37064
37066	37066	37066	37065
37067	37067	37067	37066
37068	37068	37068	37067
37069	37069	37069	37068
37070	37070	37070	37069
37071	37071	37071	37070
37072	37072	37072	37071
37073	37073	37073	37072
37074	37074	37074	37073
37075	37075	37075	37074
37076	37076	37076	37075
37077	37077	37077	37076
37078	37078	37078	37077
37079	37079	37079	37078
37080	37080	37080	37079
37081	37081	37081	37080
37082	37082	37082	37081
37083	37083	37083	37082
37084	37084	37084	37083
37085	37085	37085	37084
37086	37086	37086	37085
37087	37087	37087	37086
37088	37088	37088	37087
37089	37089	37089	37088
37090	37090	37090	37089
37091	37091	37091	37090
37092	37092	37092	37091
37093	37093	37093	37092
37094	37094	37094	37093
37095	37095	37095	37094
37096	37096	37096	37095
37097	37097	37097	37096
37098	37098	37098	37097
37099	37099	37099	37098
37100	37100	37100	37099

Surface reservations 400' wide by Dept. of L. & F. shown hereon thus

ISLAND Pt. IN SAYMO LAKE



THE TOWNSHIP

MCILVEEN

(Tp. 5G)

DISTRICT OF
ALGOMA

SAULT STE. MARIE
MINING DIVISION

SCALE: 1-INCH = 40 CHAINS

LEGEND

PATENTED LAND	Ⓟ
CROWN LAND SALE	CS
LEASES	Ⓞ
LOCATED LAND	Lo
LICENSE OF OCCUPATION	LO
MINING RIGHTS ONLY	M.R.O.
SURFACE RIGHTS ONLY	S.R.O.
ROADS	—
IMPROVED ROADS	—
KING'S HIGHWAYS	—
RAILWAYS	—
POWER LINES	—
MARSH OR MUSKEG	—
MINES	—
CANCELLED	—

NOTES

400' Surface Rights Reservation around all lakes and rivers.

Areas withdrawn from staking under Section 35 of the Mining Act (R.S.O. 1980).

Order No.	File	Date	Disposition
① W. 11/82	188536	17/2/82	S.R.O.

SAULT STE. MARIE
MINING DIVISION
RECEIVED
JUL 9 1994
A.M. P.M.
7 8 9 10 11 12 1 2 3 4 5 6

G.3139

PLAN NO. ~~M.1424~~

ONTARIO

MINISTRY OF NATURAL RESOURCES

SURVEYS AND MAPPING BRANCH

HANDLEMAN Tp. M.1427

PINE Tp.

M.1727

M.1423

MCNIE Tp.

REILLY Tp. M.1417

