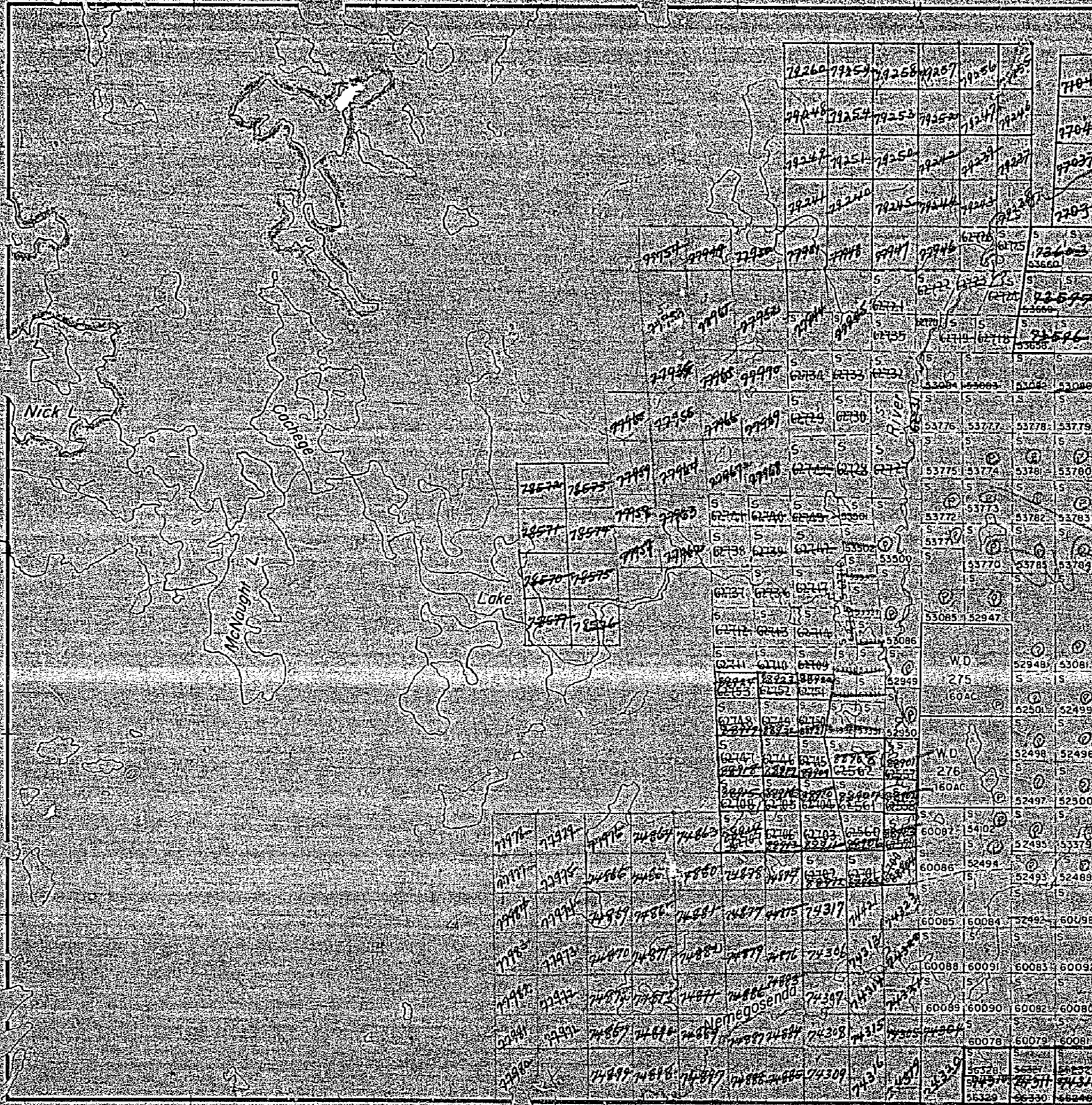


1019

BORDEN TWP

THE TOWNSHIP
OF
McNAUGHT
DISTRICT OF
SUDBURY
SUDBURY
MINING DIVISION
SCALE 1 INCH = 40 CHAINS

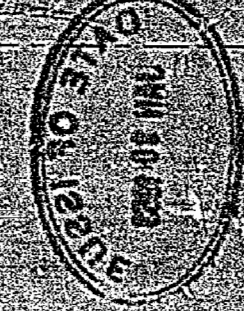


LEGEND

- PATENTED LAND
- CROWN LAND SALE
- LEASES
- LOCATED LAND
- LICENSE OF OCCUPATION
- MINING RIGHTS ONLY
- SURFACE RIGHTS ONLY
- ROADS
- IMPROVED ROADS
- KING'S HIGHWAYS
- RAILWAYS
- POWER LINES
- MARSH OR MUSKOG
- MINES

NOTES

200 Ft Reserve to Dept of Land & Forests
shown thus



PLAN NO - S 333
DEPARTMENT OF MINES
- ONTARIO -

TWP 27

BORDEN TWP.

SUDBURY MINING DIV.
RECEIVED
JUN 24 1970
A.M. 7,8,9,10,11,12,1,2,3,4 P.M. 5,6

THE TOWNSHIP OF

McNAUGHT

DISTRICT OF SUDBURY

SUDBURY MINING DIVISION

SCALE: 1-INCH = 40 CHAINS

LEGEND

- PATENTED LAND (P)
- CROWN LAND SALE (S) or (CS)
- LEASES (L)
- LOCATED LAND (Loc.)
- LICENSE OF OCCUPATION (L.O.)
- MINING RIGHTS ONLY (M.R.O.)
- SURFACE RIGHTS ONLY (S.R.O.)
- ROADS
- IMPROVED ROADS
- KING'S HIGHWAYS
- RAILWAYS
- POWER LINES
- MARSH OR MUSKEG
- MINES

NOTES

400' surface rights reservation around all lakes and rivers.

GALLAGHER TWP.

LACKNER TWP.



TWP. 27

PLAN NO.-M. 1019

DEPARTMENT OF MINES
— ONTARIO —

BORDEN TWP.

THE TOWNSHIP OF
OF

McNAUGHT

DISTRICT OF
SUDBURY

PORCUPINE
MINING DIVISION

SCALE: 1-INCH= 40 CHAINS

LEGEND

- | | |
|------------------------|---------------|
| PATENTED LAND | (P) |
| CROWN LAND SALE | (S) or (C.S.) |
| LEASES | (L) |
| LOCATED LAND | Loc. |
| LICENSE OF OCCUPATION | L.O. |
| MINING RIGHTS ONLY | M.R.O. |
| SURFACE RIGHTS ONLY | S.R.O. |
| ROADS | — |
| IMPROVED ROADS | — |
| KING'S HIGHWAYS | — |
| RAILWAYS | — |
| POWER LINES | — |
| MARSH OR MUSKEG | — |
| MINES | X |
| • D.P. | |
| ⊕ REMOTE TOURIST CAMPS | |

NOTES

400' surface rights reservation around all lakes and rivers

REPLACED OCTOBER 30, 1991

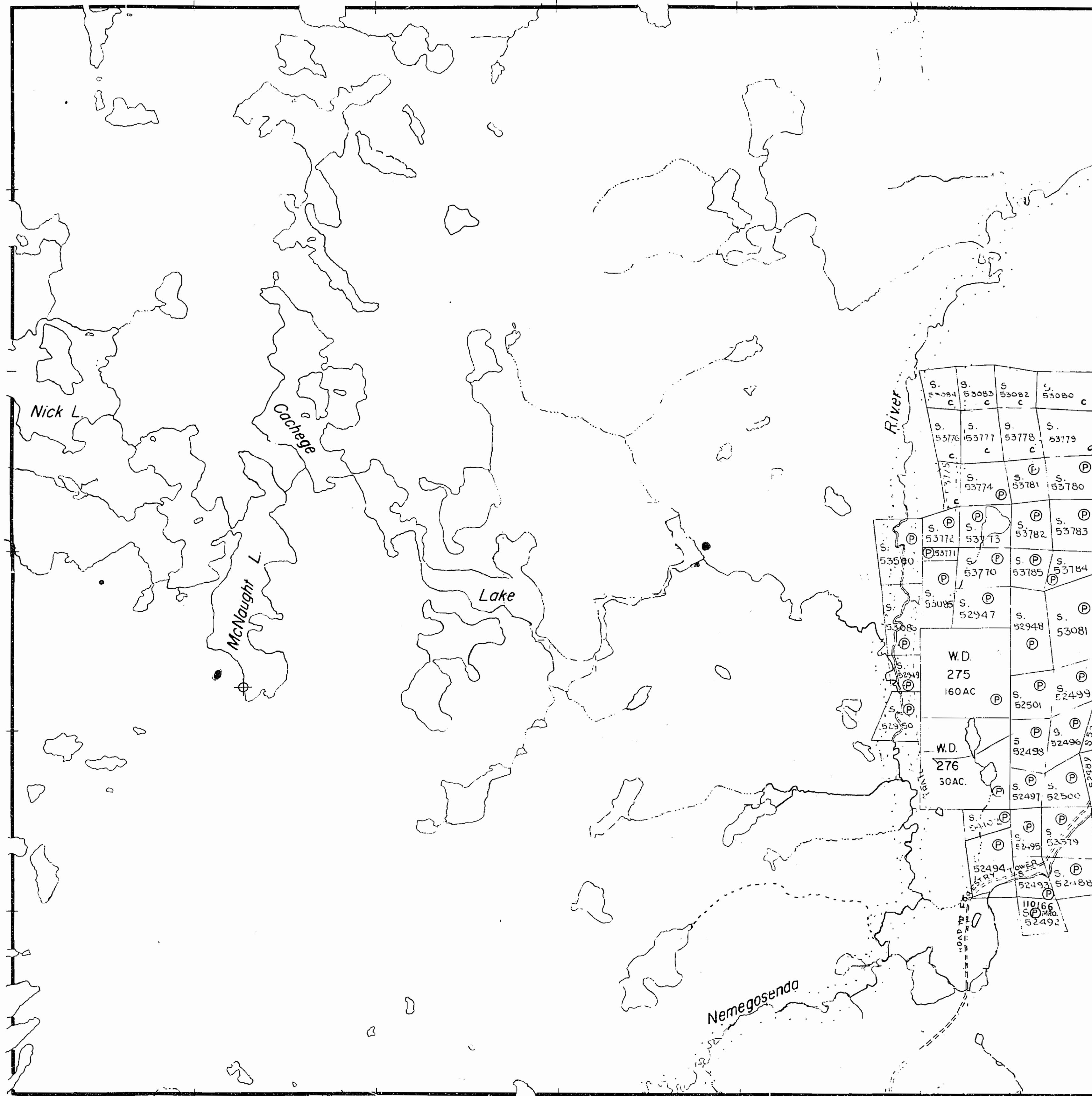
Received May 8/89

PLAN NO.-M. 1019

ONTARIO
MINISTRY OF NATURAL RESOURCES
SURVEYS AND MAPPING BRANCH

GALLAGHER TWP.

LACKNER TWP.



TWP. 27

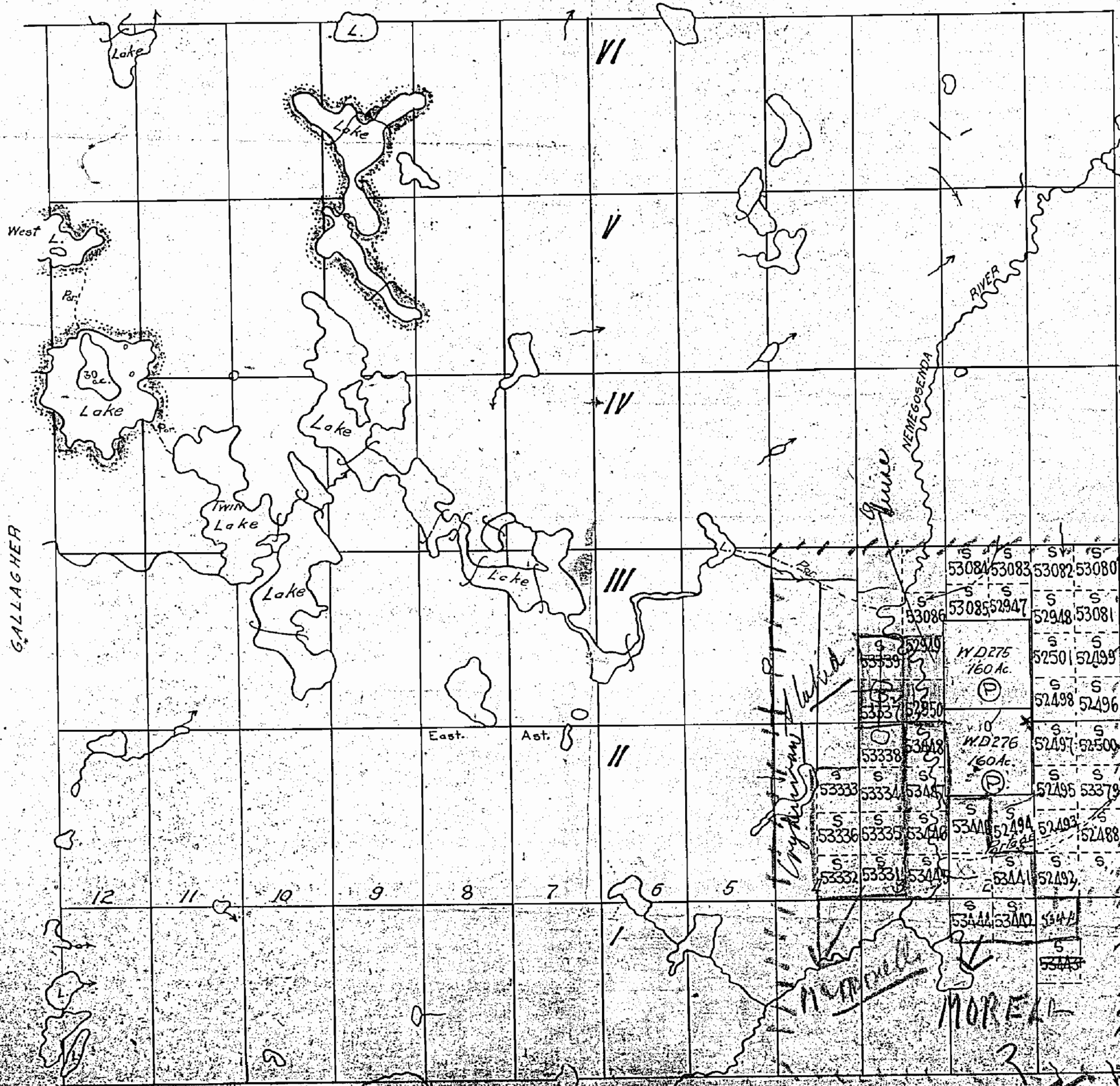
McNAUGHT

Sudbury District

SCALE 40 CHAINS TO 1 INCH

BORDEN

North Ast.
Mag. North.



GALLAGHER

North Ast. Run by O.L.S. L.V. Rorke 1905
LACKNER

100 reservation by Dept. of L. & E. ground...
lakes shown hereon thus

MIO19

1019

McNAUGHT

SUDBURY MINING DIVISION
DISTRICT OF SUDBURY

Scale: - 40 Chains - 1 Inch

Temp Lake

North Ast.

BORDEN

Slipper Lake

Nick Lake

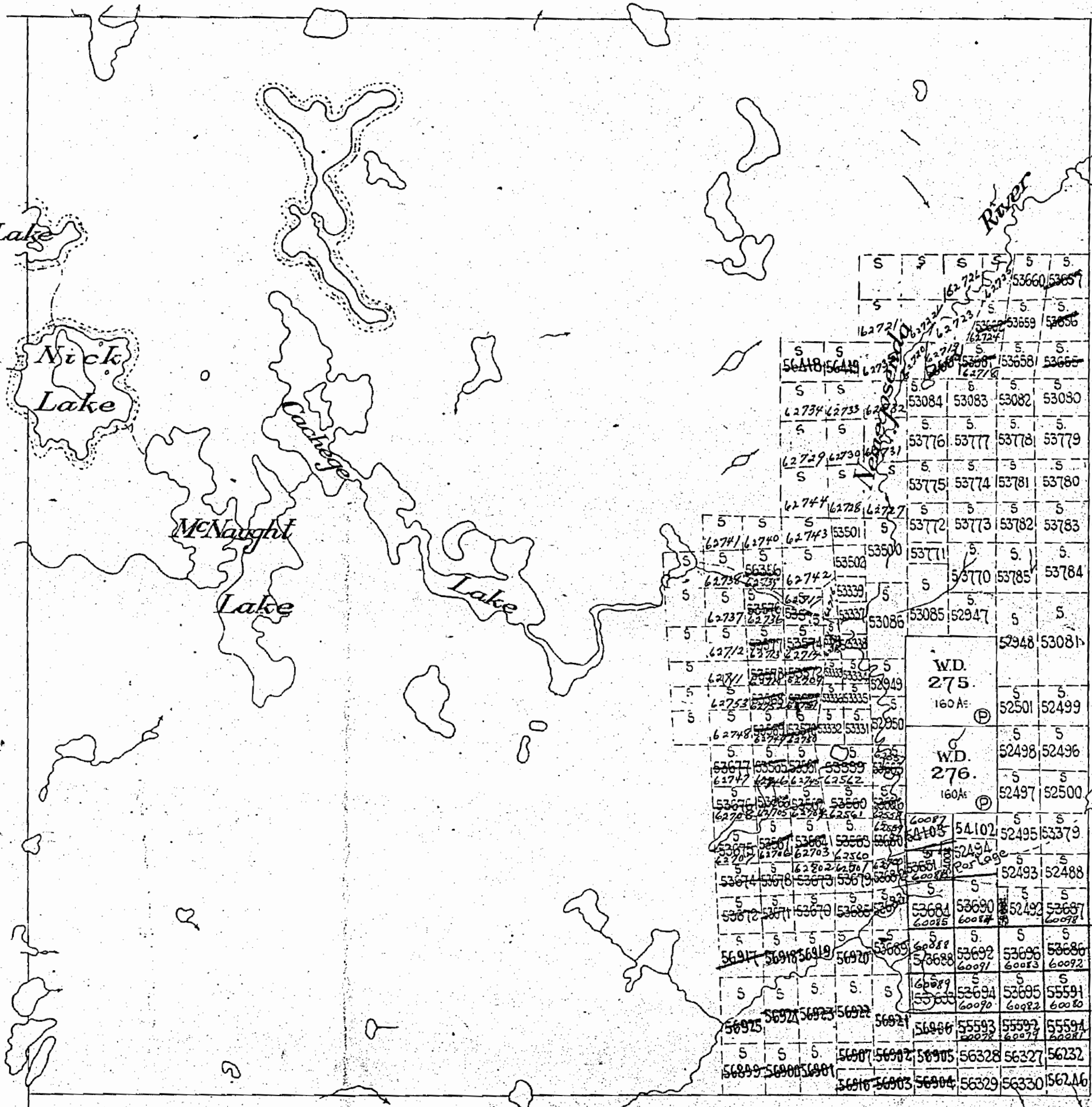
Cadogan Lake

McNaught Lake

Lake

GALLAGHER

LACKNER



TWP. 27.

M1019

Note: This township is to be staked and recorded as in unsubdivided territory - Section 52^A Mining Act.
Dept. of Lands and Forests request. 200 Ft. reservation on surface around Lakes shown hereon

McNAUGHT

SUDBURY MINING DIVISION

DISTRICT OF SUDBURY

Scale: - 40 Chains - 1 Inch

BORDEN

North Ast.

Slipper Lake

Nick Lake

GALLAGHER

McNaught Lake

Cachage

Lake

River

LACKNER

53618	53619	53620	53621	53622	53623	53624	53625	53626	53627	53628	53629	53630	53631	53632	53633	53634	53635	53636	53637	53638	53639	53640	53641	53642	53643	53644	53645	53646	53647	53648	53649	53650	53651	53652	53653	53654	53655	53656	53657	53658	53659	53660	53661	53662	53663	53664	53665	53666	53667	53668	53669	53670	53671	53672	53673	53674	53675	53676	53677	53678	53679	53680	53681	53682	53683	53684	53685	53686	53687	53688	53689	53690	53691	53692	53693	53694	53695	53696	53697	53698	53699	53700	53701	53702	53703	53704	53705	53706	53707	53708	53709	53710	53711	53712	53713	53714	53715	53716	53717	53718	53719	53720	53721	53722	53723	53724	53725	53726	53727	53728	53729	53730	53731	53732	53733	53734	53735	53736	53737	53738	53739	53740	53741	53742	53743	53744	53745	53746	53747	53748	53749	53750	53751	53752	53753	53754	53755	53756	53757	53758	53759	53760	53761	53762	53763	53764	53765	53766	53767	53768	53769	53770	53771	53772	53773	53774	53775	53776	53777	53778	53779	53780	53781	53782	53783	53784	53785	53786	53787	53788	53789	53790	53791	53792	53793	53794	53795	53796	53797	53798	53799	53800	53801	53802	53803	53804	53805	53806	53807	53808	53809	53810	53811	53812	53813	53814	53815	53816	53817	53818	53819	53820	53821	53822	53823	53824	53825	53826	53827	53828	53829	53830	53831	53832	53833	53834	53835	53836	53837	53838	53839	53840	53841	53842	53843	53844	53845	53846	53847	53848	53849	53850	53851	53852	53853	53854	53855	53856	53857	53858	53859	53860	53861	53862	53863	53864	53865	53866	53867	53868	53869	53870	53871	53872	53873	53874	53875	53876	53877	53878	53879	53880	53881	53882	53883	53884	53885	53886	53887	53888	53889	53890	53891	53892	53893	53894	53895	53896	53897	53898	53899	53900	53901	53902	53903	53904	53905	53906	53907	53908	53909	53910	53911	53912	53913	53914	53915	53916	53917	53918	53919	53920	53921	53922	53923	53924	53925	53926	53927	53928	53929	53930	53931	53932	53933	53934	53935	53936	53937	53938	53939	53940	53941	53942	53943	53944	53945	53946	53947	53948	53949	53950	53951	53952	53953	53954	53955	53956	53957	53958	53959	53960	53961	53962	53963	53964	53965	53966	53967	53968	53969	53970	53971	53972	53973	53974	53975	53976	53977	53978	53979	53980	53981	53982	53983	53984	53985	53986	53987	53988	53989	53990	53991	53992	53993	53994	53995	53996	53997	53998	53999	54000	54001	54002	54003	54004	54005	54006	54007	54008	54009	54010	54011	54012	54013	54014	54015	54016	54017	54018	54019	54020	54021	54022	54023	54024	54025	54026	54027	54028	54029	54030	54031	54032	54033	54034	54035	54036	54037	54038	54039	54040	54041	54042	54043	54044	54045	54046	54047	54048	54049	54050	54051	54052	54053	54054	54055	54056	54057	54058	54059	54060	54061	54062	54063	54064	54065	54066	54067	54068	54069	54070	54071	54072	54073	54074	54075	54076	54077	54078	54079	54080	54081	54082	54083	54084	54085	54086	54087	54088	54089	54090	54091	54092	54093	54094	54095	54096	54097	54098	54099	54100	54101	54102	54103	54104	54105	54106	54107	54108	54109	54110	54111	54112	54113	54114	54115	54116	54117	54118	54119	54120	54121	54122	54123	54124	54125	54126	54127	54128	54129	54130	54131	54132	54133	54134	54135	54136	54137	54138	54139	54140	54141	54142	54143	54144	54145	54146	54147	54148	54149	54150	54151	54152	54153	54154	54155	54156	54157	54158	54159	54160	54161	54162	54163	54164	54165	54166	54167	54168	54169	54170	54171	54172	54173	54174	54175	54176	54177	54178	54179	54180	54181	54182	54183	54184	54185	54186	54187	54188	54189	54190	54191	54192	54193	54194	54195	54196	54197	54198	54199	54200	54201	54202	54203	54204	54205	54206	54207	54208	54209	54210	54211	54212	54213	54214	54215	54216	54217	54218	54219	54220	54221	54222	54223	54224	54225	54226	54227	54228	54229	54230	54231	54232	54233	54234	54235	54236	54237	54238	54239	54240	54241	54242	54243	54244	54245	54246	54247	54248	54249	54250	54251	54252	54253	54254	54255	54256	54257	54258	54259	54260	54261	54262	54263	54264	54265	54266	54267	54268	54269	54270	54271	54272	54273	54274	54275	54276	54277	54278	54279	54280	54281	54282	54283	54284	54285	54286	54287	54288	54289	54290	54291	54292	54293	54294	54295	54296	54297	54298	54299	54300	54301	54302	54303	54304	54305	54306	54307	54308	54309	54310	54311	54312	54313	54314	54315	54316	54317	54318	54319	54320	54321	54322	54323	54324	54325	54326	54327	54328	54329	54330	54331	54332	54333	54334	54335	54336	54337	54338	54339	54340	54341	54342	54343	54344	54345	54346	54347	54348	54349	54350	54351	54352	54353	54354	54355	54356	54357	54358	54359	54360	54361	54362	54363	54364	54365	54366	54367	54368	54369	54370	54371	54372	54373	54374	54375	54376	54377	54378	54379	54380	54381	54382	54383	54384	54385	54386	54387	54388	54389	54390	54391	54392	54393	54394	54395	54396	54397	54398	54399	54400	54401	54402	54403	54404	54405	54406	54407	54408	54409	54410	54411	54412	54413	54414	54415	54416	54417	54418	54419	54420	54421	54422	54423	54424	54425	54426	54427	54428	54429	54430	54431	54432	54433	54434	54435	54436	54437	54438	54439	54440	54441	54442	54443	54444	54445	54446	54447	54448	54449	54450	54451	54452	54453	54454	54455	54456	54457	54458	54459	54460	54461	54462	54463	54464	54465	54466	54467	54468	54469	54470	54471	54472	54473	54474	54475	54476	54477	54478	54479	54480	54481	54482	54483	54484	54485	54486	54487	54488	54489	54490	54491	54492	54493	54494	54495	54496	54497	54498	54499	54500	54501	54502	54503	54504	54505	54506	54507	54508	54509	54510	54511	54512	54513	54514	54515	54516	54517	54518	54519	54520	54521	54522	54523	54524	54525	54526	54527	54528	54529	54530	54531	54532	54533	54534	54535	54536	54537	54538	54539	54540	54541	54542	54543	54544	54545	54546	54547	54548	54549	54550	54551	54552	54553	54554	54555	54556	54557	54558	54559	54560	54561	54562	54563	54564	54565	54566	54567	54568	54569	54570	54571	54572	54573	54574	54575	54576	54577	54578	54579	54580	54581	54582	54583	54584	54585	54586	54587	54588	54589	54590	54591	54592	54593	54594	54595	54596	54597	54598	54599	54600	54601	54602	54603	54604	54605	54606	54607	54608	54609	54610	54611	54612	54613	54614	54615	54616	54617	54618	54619	54620	54621	54622	54623	54624	54625	54626	54627	54628	54629	54630	54631	54632	54633	54634	54635	54636	54637	54638	54639	54640	54641	54642	54643	54644	54645	54646	54647	54648	54649	54650	54651	54652	54653	54654	54655	54656	54657	54658	54659	54660	54661	54662	54663	54664	54665	54666	54667	54668	54669	54670	54671	54672	54673	54674	54675	54676	54677	54678	54679	54680	54681	54682	54683	54684	54685	54686	54687	54688	54689	54690	54691	54692	54693	54694	54695	54696	54697	54698	54699	54700	54701	54702	54703	54704	54705	54706	54707	54708	54709	54710	54711	54712	54713	54714	54715	54716	54717	54718	54719	54720	54721	54722	54723	54724	54725	54726	54727	54728	54729	54730	54731	54732	54733	54734	54735	54736	54737	54738	54739	54740	54741	54742	54743	54744	54745	54746	54747	54748	54749	54750	54751	54752	54753	54754	54755	54756	54757	54758	54759	54760	54761	54762	54763	54764	54765	54766	54767	54768	54769	54770	54771	54772	54773	54774	54775	54776	54777	54778	54779	54780	54781	54782	54783	54784	54785	54786	54787	54788	54789	54790	54791	54792	54793	54794	54795
-------	-------	-------	-------	-------	-------	-------	-------	-------	-------	-------	-------	-------	-------	-------	-------	-------	-------	-------	-------	-------	-------	-------	-------	-------	-------	-------	-------	-------	-------	-------	-------	-------	-------	-------	-------	-------	-------	-------	-------	-------	-------	-------	-------	-------	-------	-------	-------	-------	-------	-------	-------	-------	-------	-------	-------	-------	-------	-------	-------	-------	-------	-------	-------	-------	-------	-------	-------	-------	-------	-------	-------	-------	-------	-------	-------	-------	-------	-------	-------	-------	-------	-------	-------	-------	-------	-------	-------	-------	-------	-------	-------	-------	-------	-------	-------	-------	-------	-------	-------	-------	-------	-------	-------	-------	-------	-------	-------	-------	-------	-------	-------	-------	-------	-------	-------	-------	-------	-------	-------	-------	-------	-------	-------	-------	-------	-------	-------	-------	-------	-------	-------	-------	-------	-------	-------	-------	-------	-------	-------	-------	-------	-------	-------	-------	-------	-------	-------	-------	-------	-------	-------	-------	-------	-------	-------	-------	-------	-------	-------	-------	-------	-------	-------	-------	-------	-------	-------	-------	-------	-------	-------	-------	-------	-------	-------	-------	-------	-------	-------	-------	-------	-------	-------	-------	-------	-------	-------	-------	-------	-------	-------	-------	-------	-------	-------	-------	-------	-------	-------	-------	-------	-------	-------	-------	-------	-------	-------	-------	-------	-------	-------	-------	-------	-------	-------	-------	-------	-------	-------	-------	-------	-------	-------	-------	-------	-------	-------	-------	-------	-------	-------	-------	-------	-------	-------	-------	-------	-------	-------	-------	-------	-------	-------	-------	-------	-------	-------	-------	-------	-------	-------	-------	-------	-------	-------	-------	-------	-------	-------	-------	-------	-------	-------	-------	-------	-------	-------	-------	-------	-------	-------	-------	-------	-------	-------	-------	-------	-------	-------	-------	-------	-------	-------	-------	-------	-------	-------	-------	-------	-------	-------	-------	-------	-------	-------	-------	-------	-------	-------	-------	-------	-------	-------	-------	-------	-------	-------	-------	-------	-------	-------	-------	-------	-------	-------	-------	-------	-------	-------	-------	-------	-------	-------	-------	-------	-------	-------	-------	-------	-------	-------	-------	-------	-------	-------	-------	-------	-------	-------	-------	-------	-------	-------	-------	-------	-------	-------	-------	-------	-------	-------	-------	-------	-------	-------	-------	-------	-------	-------	-------	-------	-------	-------	-------	-------	-------	-------	-------	-------	-------	-------	-------	-------	-------	-------	-------	-------	-------	-------	-------	-------	-------	-------	-------	-------	-------	-------	-------	-------	-------	-------	-------	-------	-------	-------	-------	-------	-------	-------	-------	-------	-------	-------	-------	-------	-------	-------	-------	-------	-------	-------	-------	-------	-------	-------	-------	-------	-------	-------	-------	-------	-------	-------	-------	-------	-------	-------	-------	-------	-------	-------	-------	-------	-------	-------	-------	-------	-------	-------	-------	-------	-------	-------	-------	-------	-------	-------	-------	-------	-------	-------	-------	-------	-------	-------	-------	-------	-------	-------	-------	-------	-------	-------	-------	-------	-------	-------	-------	-------	-------	-------	-------	-------	-------	-------	-------	-------	-------	-------	-------	-------	-------	-------	-------	-------	-------	-------	-------	-------	-------	-------	-------	-------	-------	-------	-------	-------	-------	-------	-------	-------	-------	-------	-------	-------	-------	-------	-------	-------	-------	-------	-------	-------	-------	-------	-------	-------	-------	-------	-------	-------	-------	-------	-------	-------	-------	-------	-------	-------	-------	-------	-------	-------	-------	-------	-------	-------	-------	-------	-------	-------	-------	-------	-------	-------	-------	-------	-------	-------	-------	-------	-------	-------	-------	-------	-------	-------	-------	-------	-------	-------	-------	-------	-------	-------	-------	-------	-------	-------	-------	-------	-------	-------	-------	-------	-------	-------	-------	-------	-------	-------	-------	-------	-------	-------	-------	-------	-------	-------	-------	-------	-------	-------	-------	-------	-------	-------	-------	-------	-------	-------	-------	-------	-------	-------	-------	-------	-------	-------	-------	-------	-------	-------	-------	-------	-------	-------	-------	-------	-------	-------	-------	-------	-------	-------	-------	-------	-------	-------	-------	-------	-------	-------	-------	-------	-------	-------	-------	-------	-------	-------	-------	-------	-------	-------	-------	-------	-------	-------	-------	-------	-------	-------	-------	-------	-------	-------	-------	-------	-------	-------	-------	-------	-------	-------	-------	-------	-------	-------	-------	-------	-------	-------	-------	-------	-------	-------	-------	-------	-------	-------	-------	-------	-------	-------	-------	-------	-------	-------	-------	-------	-------	-------	-------	-------	-------	-------	-------	-------	-------	-------	-------	-------	-------	-------	-------	-------	-------	-------	-------	-------	-------	-------	-------	-------	-------	-------	-------	-------	-------	-------	-------	-------	-------	-------	-------	-------	-------	-------	-------	-------	-------	-------	-------	-------	-------	-------	-------	-------	-------	-------	-------	-------	-------	-------	-------	-------	-------	-------	-------	-------	-------	-------	-------	-------	-------	-------	-------	-------	-------	-------	-------	-------	-------	-------	-------	-------	-------	-------	-------	-------	-------	-------	-------	-------	-------	-------	-------	-------	-------	-------	-------	-------	-------	-------	-------	-------	-------	-------	-------	-------	-------	-------	-------	-------	-------	-------	-------	-------	-------	-------	-------	-------	-------	-------	-------	-------	-------	-------	-------	-------	-------	-------	-------	-------	-------	-------	-------	-------	-------	-------	-------	-------	-------	-------	-------	-------	-------	-------	-------	-------	-------	-------	-------	-------	-------	-------	-------	-------	-------	-------	-------	-------	-------	-------	-------	-------	-------	-------	-------	-------	-------	-------	-------	-------	-------	-------	-------	-------	-------	-------	-------	-------	-------	-------	-------	-------	-------	-------	-------	-------	-------	-------	-------	-------	-------	-------	-------	-------	-------	-------	-------	-------	-------	-------	-------	-------	-------	-------	-------	-------	-------	-------	-------	-------	-------	-------	-------	-------	-------	-------	-------	-------	-------	-------	-------	-------	-------	-------	-------	-------	-------	-------	-------	-------	-------	-------	-------	-------	-------	-------	-------	-------	-------	-------	-------	-------	-------	-------	-------	-------	-------	-------	-------	-------	-------	-------	-------	-------	-------	-------	-------	-------	-------	-------	-------	-------	-------	-------	-------	-------	-------	-------	-------	-------	-------	-------	-------	-------	-------	-------	-------	-------	-------	-------	-------	-------	-------	-------	-------	-------	-------	-------	-------	-------	-------	-------	-------	-------	-------	-------	-------	-------	-------	-------	-------	-------	-------	-------	-------	-------	-------	-------	-------	-------	-------	-------	-------	-------	-------	-------	-------	-------	-------	-------	-------	-------	-------	-------	-------	-------	-------	-------	-------	-------	-------	-------	-------	-------	-------	-------	-------	-------	-------	-------	-------	-------	-------	-------	-------	-------	-------	-------	-------	-------	-------	-------	-------	-------	-------	-------	-------	-------	-------	-------	-------	-------	-------	-------	-------	-------	-------	-------	-------	-------	-------	-------	-------	-------	-------	-------	-------	-------	-------	-------	-------	-------	-------	-------	-------	-------	-------	-------	-------	-------	-------	-------	-------	-------	-------	-------	-------	-------	-------	-------	-------	-------	-------	-------	-------	-------	-------	-------	-------	-------	-------	-------	-------	-------	-------	-------	-------	-------	-------	-------	-------	-------	-------	-------	-------	-------	-------	-------	-------	-------	-------	-------	-------	-------	-------	-------	-------	-------	-------	-------	-------	-------	-------	-------	-------	-------	-------	-------	-------	-------	-------	-------	-------	-------	-------	-------	-------	-------	-------	-------	-------	-------	-------	-------	-------	-------	-------	-------	-------	-------	-------	-------	-------	-------	-------	-------	-------	-------	-------	-------	-------	-------	-------	-------	-------	-------	-------	-------	-------	-------	-------	-------

1019

BORDEN TWP.

plk

THE TOWNSHIP OF

McNAUGHT

DISTRICT OF SUDBURY

SUDBURY MINING DIVISION

SCALE: 1-INCH= 40 CHAINS

LEGEND

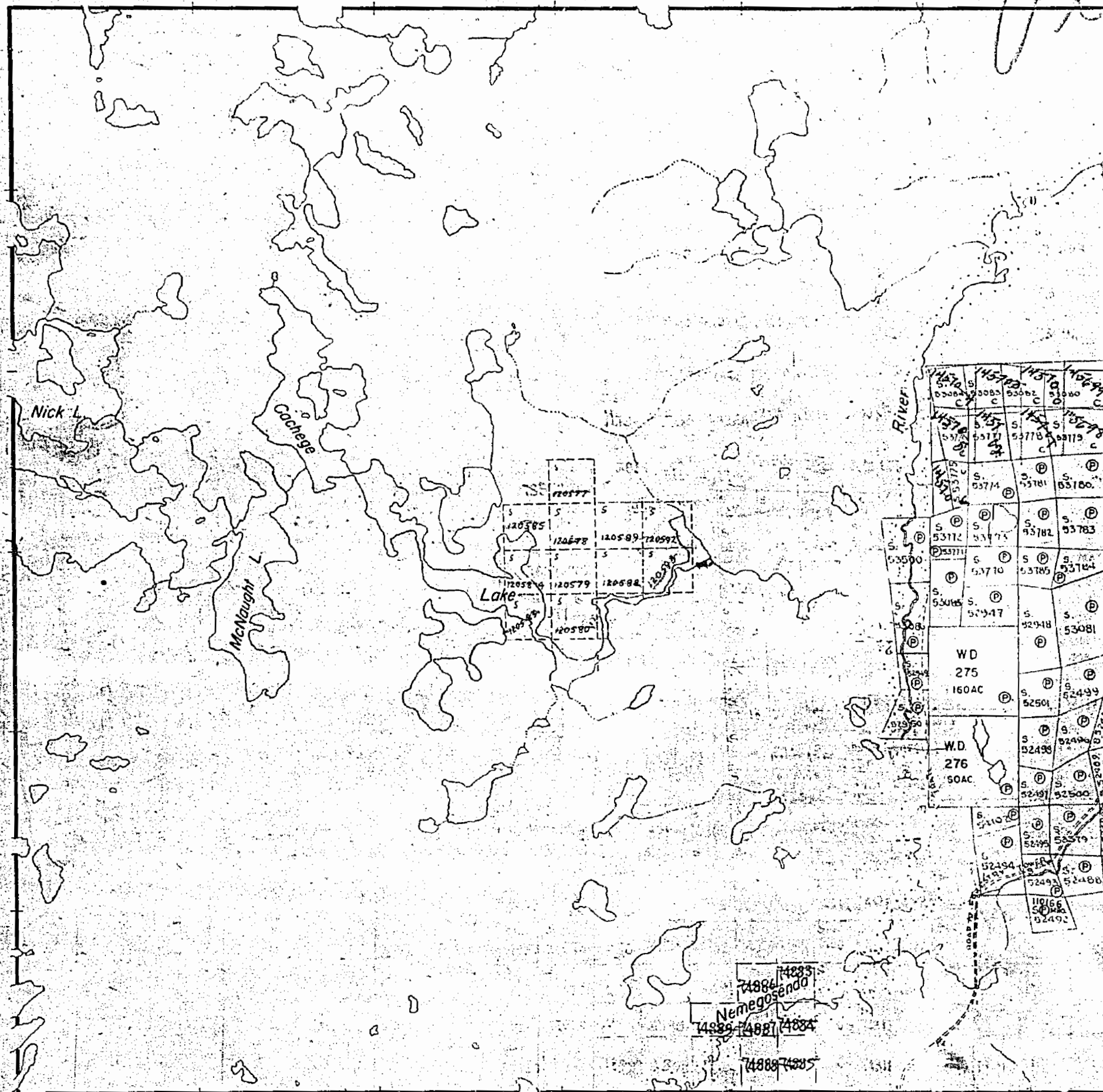
- PATENTED LAND (P)
- CROWN LAND SALE (S) or CS
- LEASES (L)
- LOCATED LAND Loc
- LICENSE OF OCCUPATION L.O.
- MINING RIGHTS ONLY M.R.O.
- SURFACE RIGHTS ONLY S.R.O.
- ROADS
- IMPROVED ROADS
- KING'S HIGHWAYS
- RAILWAYS
- POWER LINES
- MARSH OR MUSKEG
- MINES

NOTES

400' surface rights reservation around all lakes and rivers.

GALLAGHER TWP.

LACKNER TWP.



TWP. 27

PLAN NO.- M. 1019

DEPARTMENT OF MINES
— ONTARIO —

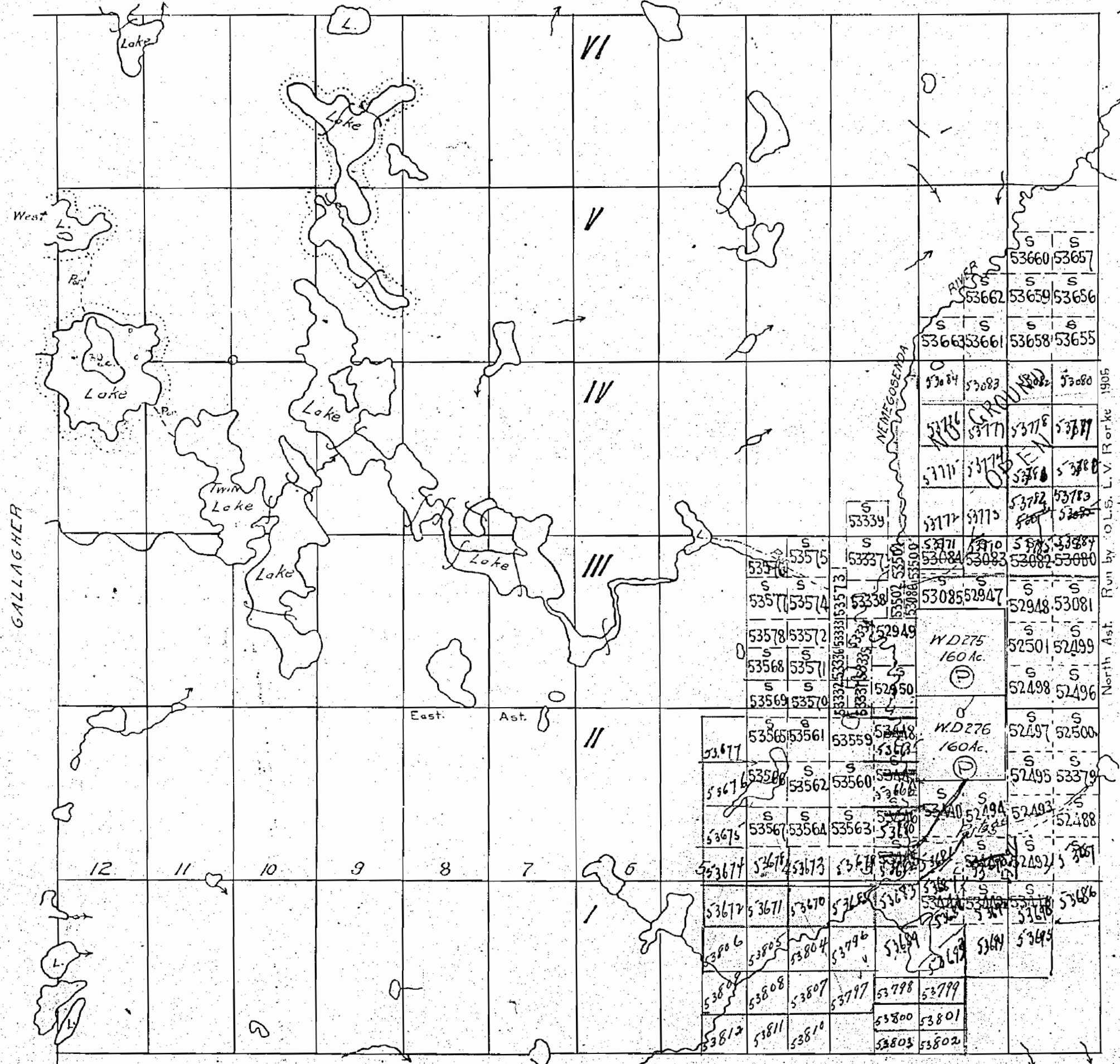
NOTE: This Twp is to be staked and recorded as unsubdivided territory Section 52^A Mining Act.

MENAUGHT

Sudbury District.

SCALE 40 CHAINS TO 1 INCH

BORDEN



200' reservation by Dept. of L. & F. round certain lakes shown hereon thus

M1019

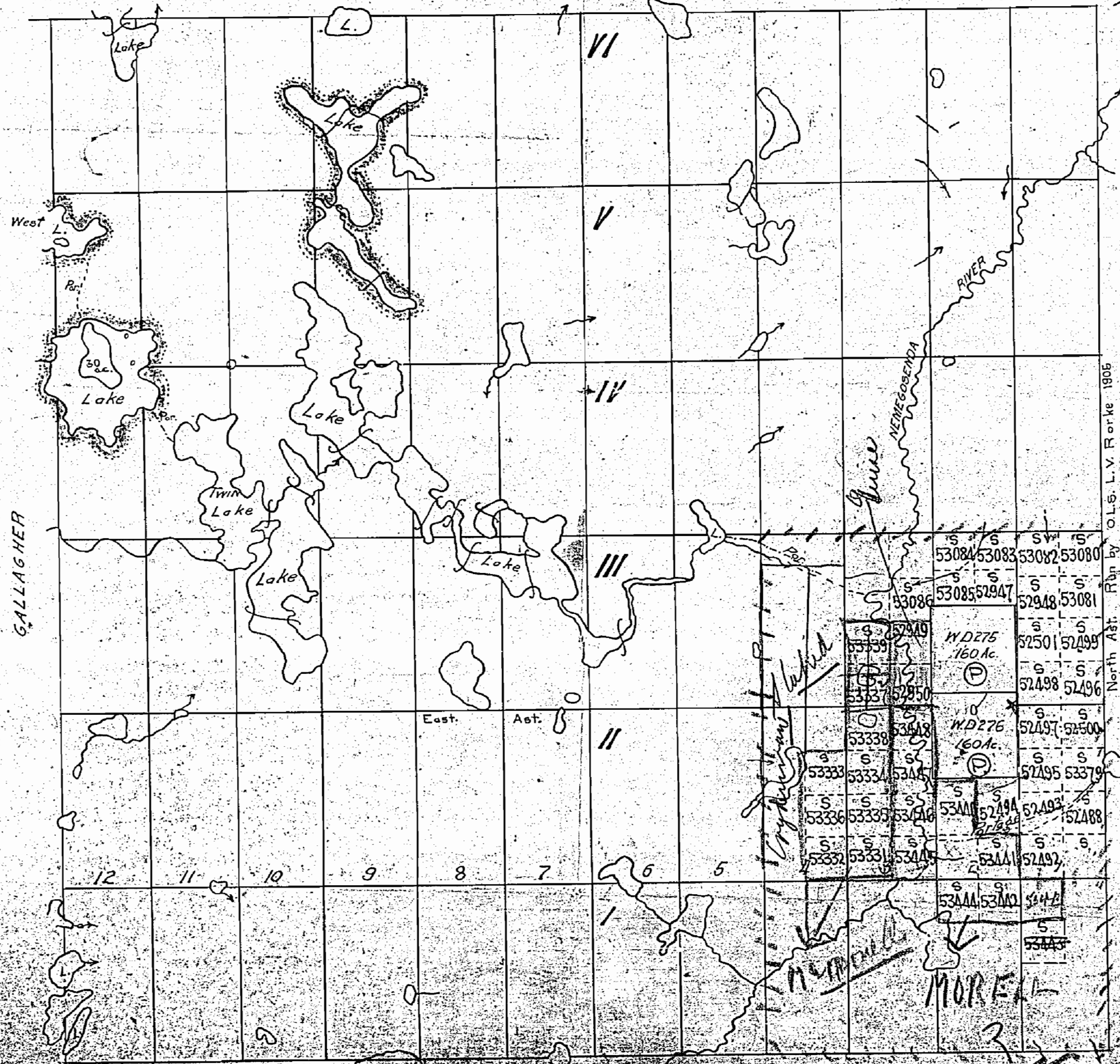
MENNAUGHT

Sudbury District

SCALE 40 CHAINS TO 1 INCH

BORDEN

North Ast.
Mag. North



GALLAGHER

North Ast. Run by O.L.S. L.V. Forke 1905
LACKNER

200 Reservation by Dept of L.V.E. dated 1905
copy shown herein thus

M1019

1019

McNAUGHT

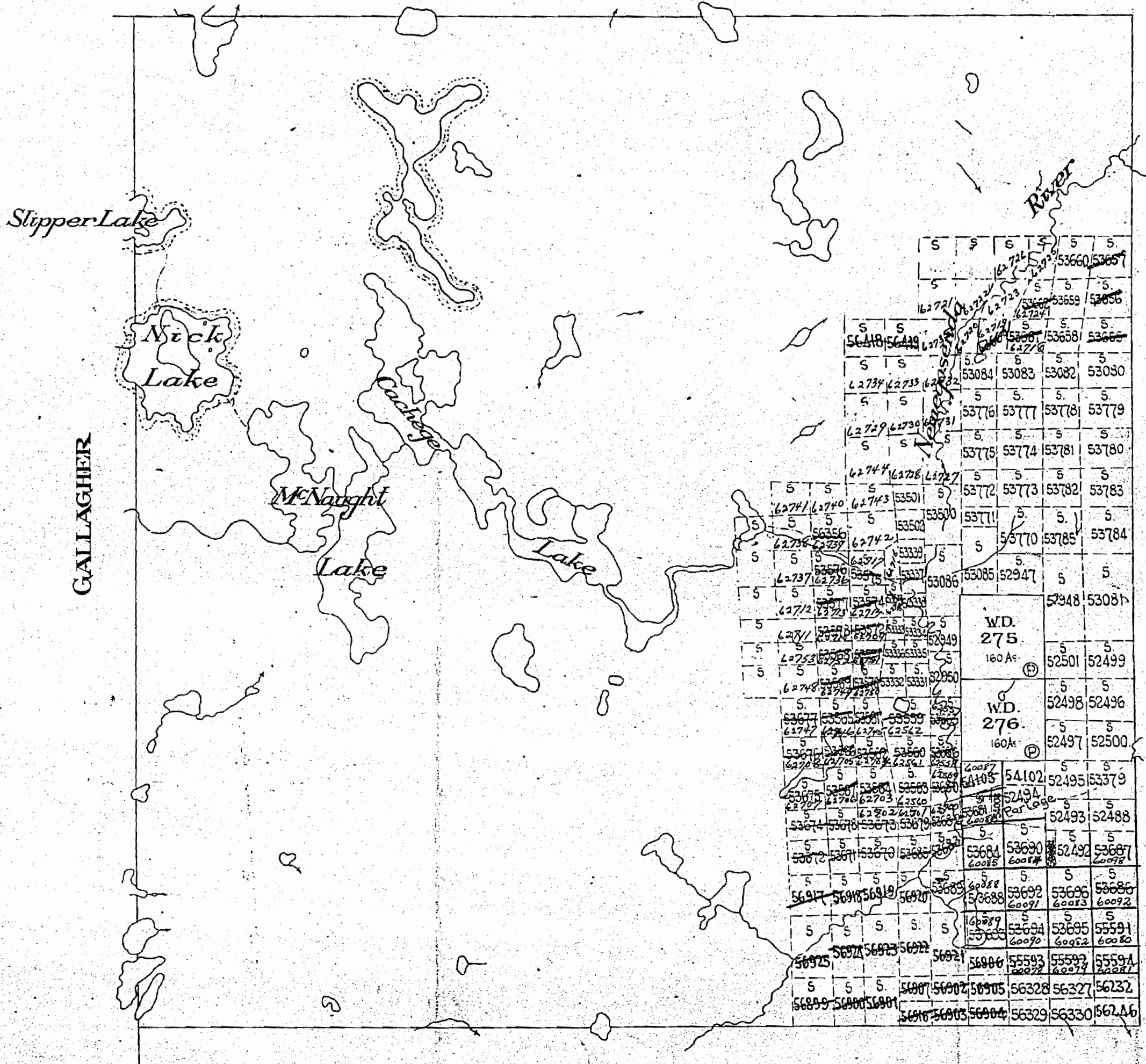
SUDBURY MINING DIVISION
DISTRICT OF SUDBURY

Scale: - 40 Chains - 1 Inch

Twp. 27

North Ast.

BORDEN



GALLAGHER

LACKNER

TWP. 27.

M1019

Note: This Township is to be staked and recorded as in unsubdivided territory - Section 52^A Mining Act.
Dept. of Lands and Forests request 200' Ft. reservation on surface around Lakes shown hereon

1019

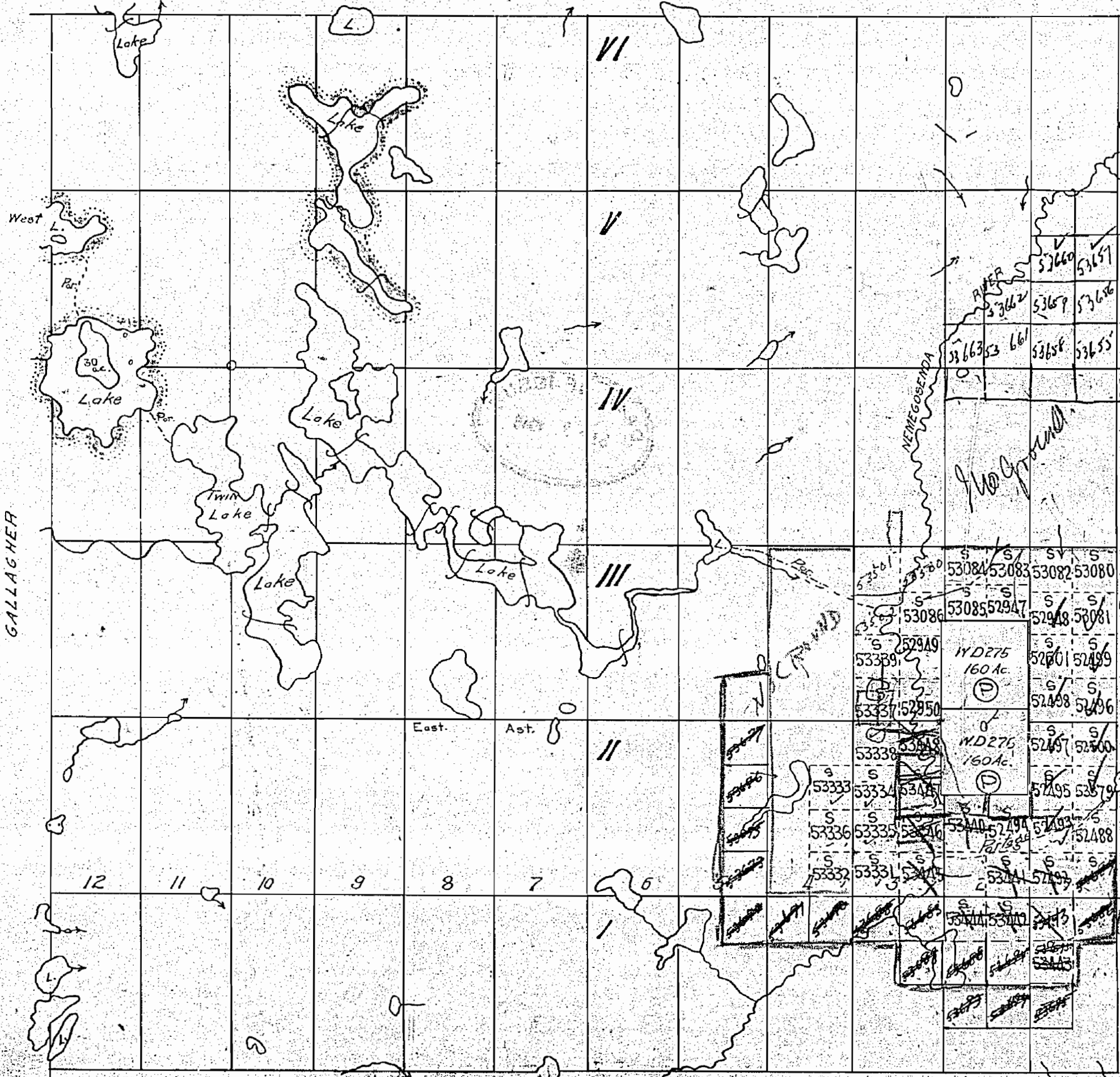
MENAUGHT

Sudbury District

SCALE 40 CHAINS TO 1 INCH

North As.
Mag. North.

BORDEN



North As. Run by O.L.S. L.V. Forke 1905
LACKNER

200' reservation by Dept. of L. & F. around certain lakes shown hereon thus

M1019

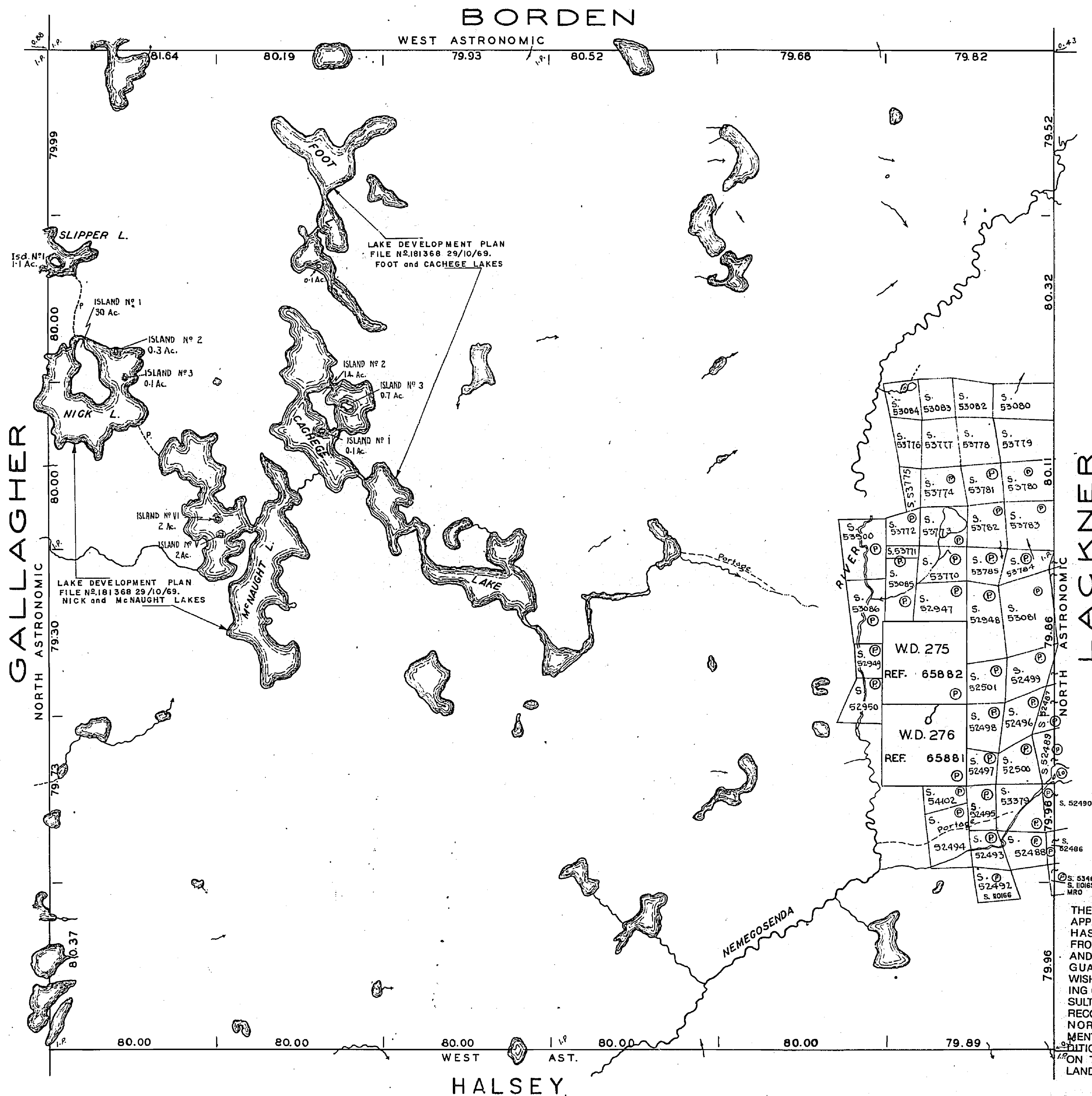
REFERENCES

BOUNDARIES

Township lines are projected from the original field notes.
 Bearings and distances shown in accordance with the original field note book
 South and West Boundaries by Herbert J. Beatty O.L.S. 1906. Field Note Book No 1563.
 North Boundary by Herbert J. Beatty O.L.S. Field Note Book No 965 1905
 East Boundary by L.V. Rorke O.L.S. 1905 Field Note Book No 2502

TOPOGRAPHY

Lakes, Rivers, Streams, etc., from original Field Notes.



THE INFORMATION THAT APPEARS ON THIS MAP HAS BEEN COMPILED FROM VARIOUS SOURCES, AND ACCURACY IS NOT GUARANTEED. THOSE WISHING TO STAKE MINING CLAIMS SHOULD CONSULT WITH THE MINING RECORDER, MINISTRY OF NORTHERN DEVELOPMENT AND MINES, FOR ADDITIONAL INFORMATION ON THE STATUS OF THE LANDS SHOWN HEREON.

REFERENCES

CERTIFICATE

The subdivision of the Township of McNaught as subdivided into Lots and Concessions by Herbert J. Beatty O.L.S. and shown on plan of survey dated October 26th 1906 is hereby annulled and superseded by this official plan.

F.A. MacDougal

Deputy Minister

Department of Lands and Forests
 Toronto, Ontario 9th November, 1949.

CERTIFICATE

Surveys performed henceforth within the former subdivision of the Township of McNaught shall be classified as being in unsubdivided territory, which means that each surveyed parcel must be designated by its mining claim number or if not a mining claim, then by the surveyor's official letters & number. Each survey made must adhere to the form of surveys made in any other unsubdivided township or unsurveyed area

H. J. Beatty

Surveyor General

Department of Lands and Forests
 Toronto, Ontario. 9th November, 1949

LEGEND

- Paved Highway
- Gravel Highway
- Other Roads
- Trail or Path
- Highway Route Number
- Electric Power Line
- Telephone Line
- Railway and Right of Way
- Rapids, Falls, Portage
- Non-Perennial Stream
- Edge of Clearing
- Treeless Muskeg or Marsh
- Bridge, Buildings

ACTIVATED OCTOBER 29, 1951

DISPOSITION OF CROWN LANDS

- PATENTED
- LEASED
- LICENSE OF OCCUPATION
- ORDER IN COUNCIL

Ministry of Natural Resources
 Ministry of Northern Development and Mines

TOWNSHIP
McNAUGHT
 M.N.R. ADMINISTRATIVE DISTRICT
CHAPLEAU
 MINING DIVISION
PORCUPINE
 LAND TITLES / REGISTRY DIVISION
SUDBURY

DR. D.G.M. | CH. H.A.S. | APP. E.J.O. | NOVEMBER 1949

SCALE | INCH = 40 CHS.

TORONTO CANADA

G-1178

1019

BORDEN TWP.

J.H.

THE TOWNSHIP OF

McNAUGHT

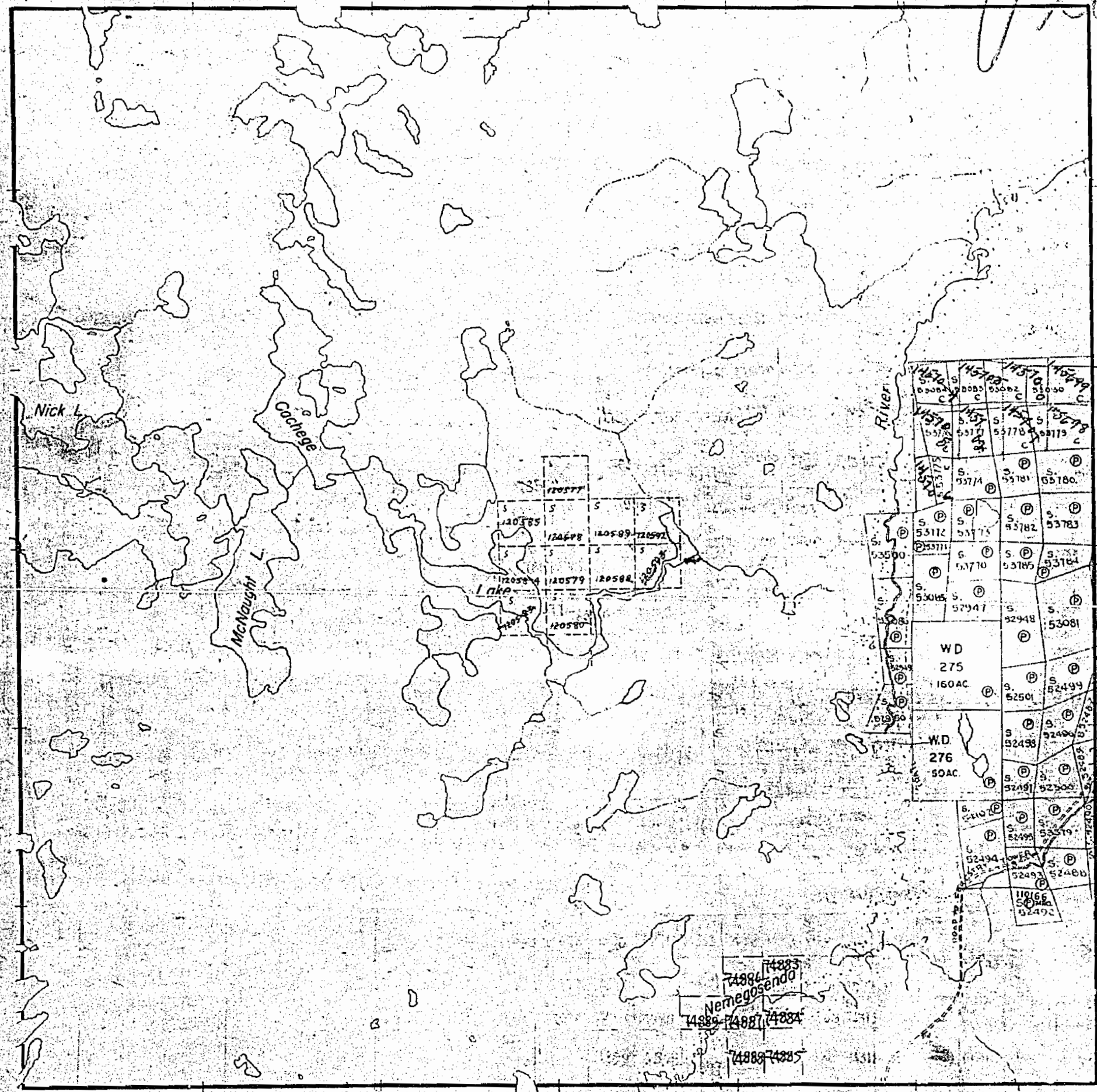
DISTRICT OF SUDBURY

SUDBURY MINING DIVISION

SCALE: 1-INCH= 40 CHAINS

GALLAGHER TWP.

LACKNER TWP.



LEGEND

- PATENTED LAND (P)
- CROWN LAND SALE (S) or C.S.
- LEASES (L)
- LOCATED LAND Loc.
- LICENSE OF OCCUPATION L.O.
- MINING RIGHTS ONLY M.R.O.
- SURFACE RIGHTS ONLY S.R.O.
- ROADS
- IMPROVED ROADS
- KING'S HIGHWAYS
- RAILWAYS
- POWER LINES
- MARSH OR MUSKEG
- MINES X

NOTES

400' surface rights reservation around all lakes and rivers

TWP. 27

PLAN NO.- M. 1019

DEPARTMENT OF MINES
— ONTARIO —

M'NAUGHT

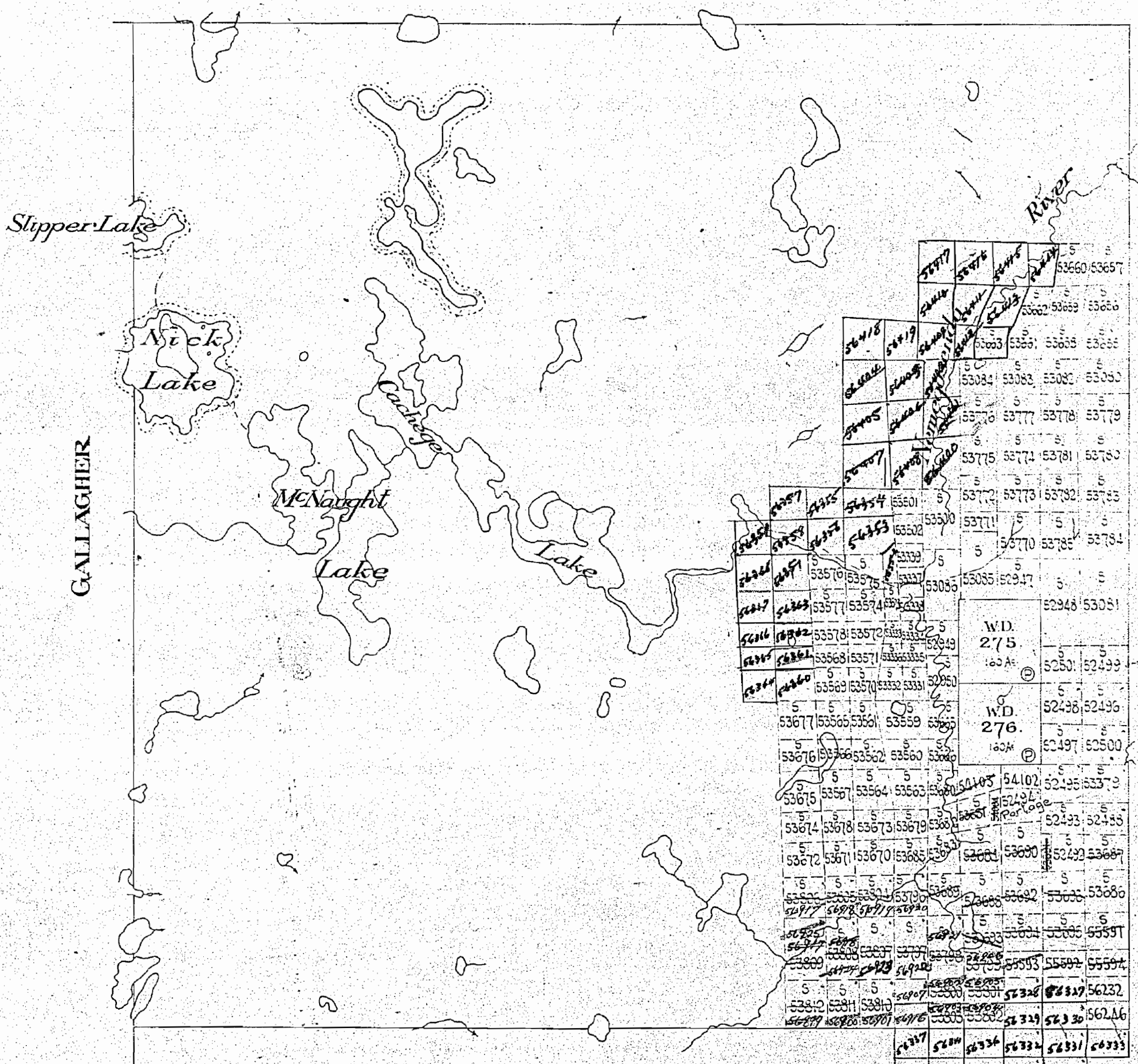
SUDBURY MINING DIVISION

DISTRICT OF SUDBURY

Scale:- 40 Chains - 1 Inch

North Ast.

BORDEN



GALLAGHER

LACKNER

TWP. 27.

HALSEY TWP.

M1019

Note: This township is to be staked and recorded as in unsubdivided territory - Section 52 Mining Act
Dept. of Lands and Forests request 200 Ft. reservation on surface around Lakes shown hereon

McNAUGHT TWP.

NOTE: This Twp is to be staked and recorded as in unsubdivided territory Section 52^A Mining Act.

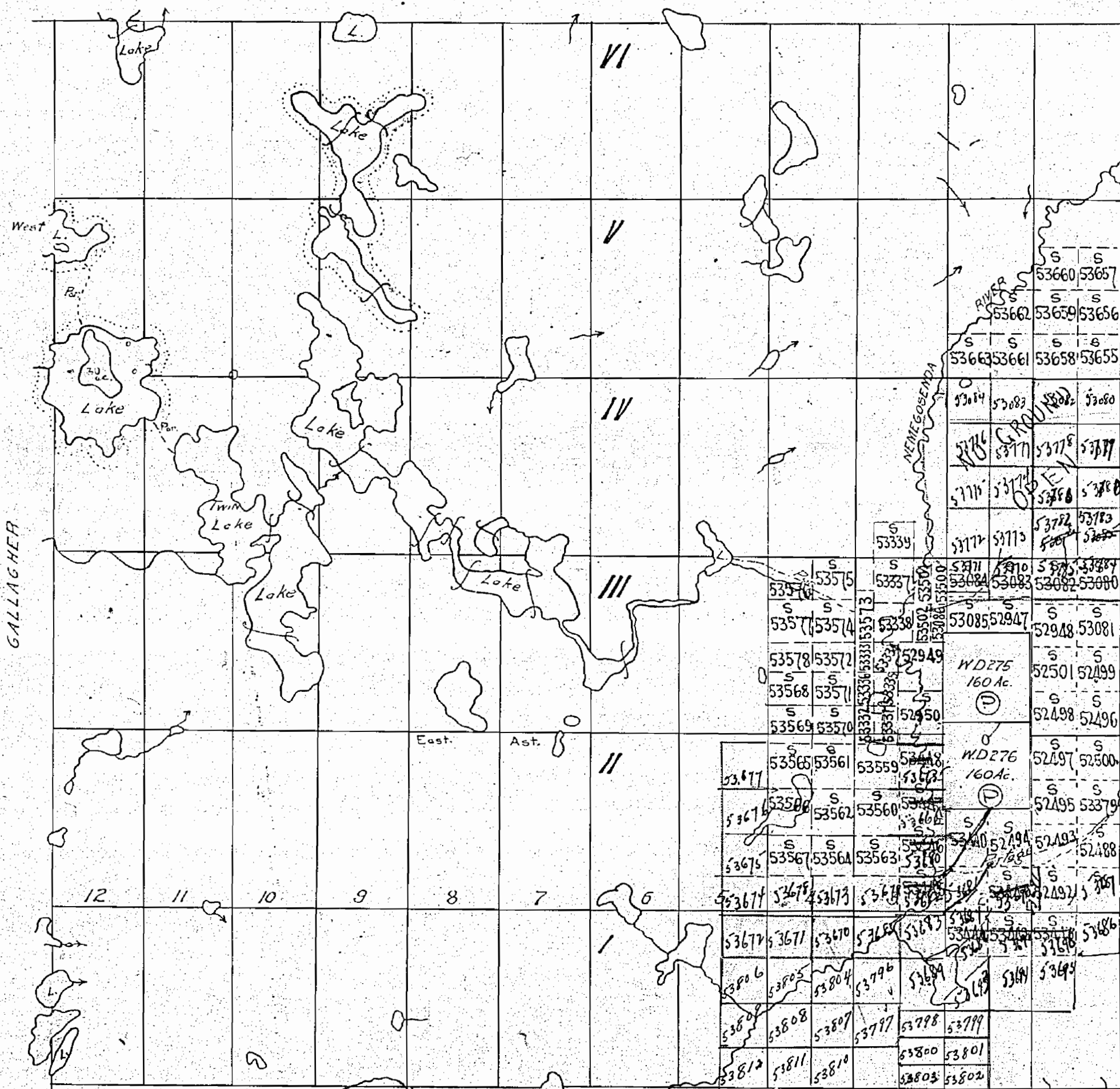
McNAUGHT

Sudbury District.

SCALE 40 CHAINS TO 1 INCH

BORDEN

North Ast.
Mag. North.



200' reservation by Dept. of L. & F. round certain lakes shown hereon thus

M1019

North Ast. Run by O.L.S. L.V. Forke 1905
LACKNER

1019

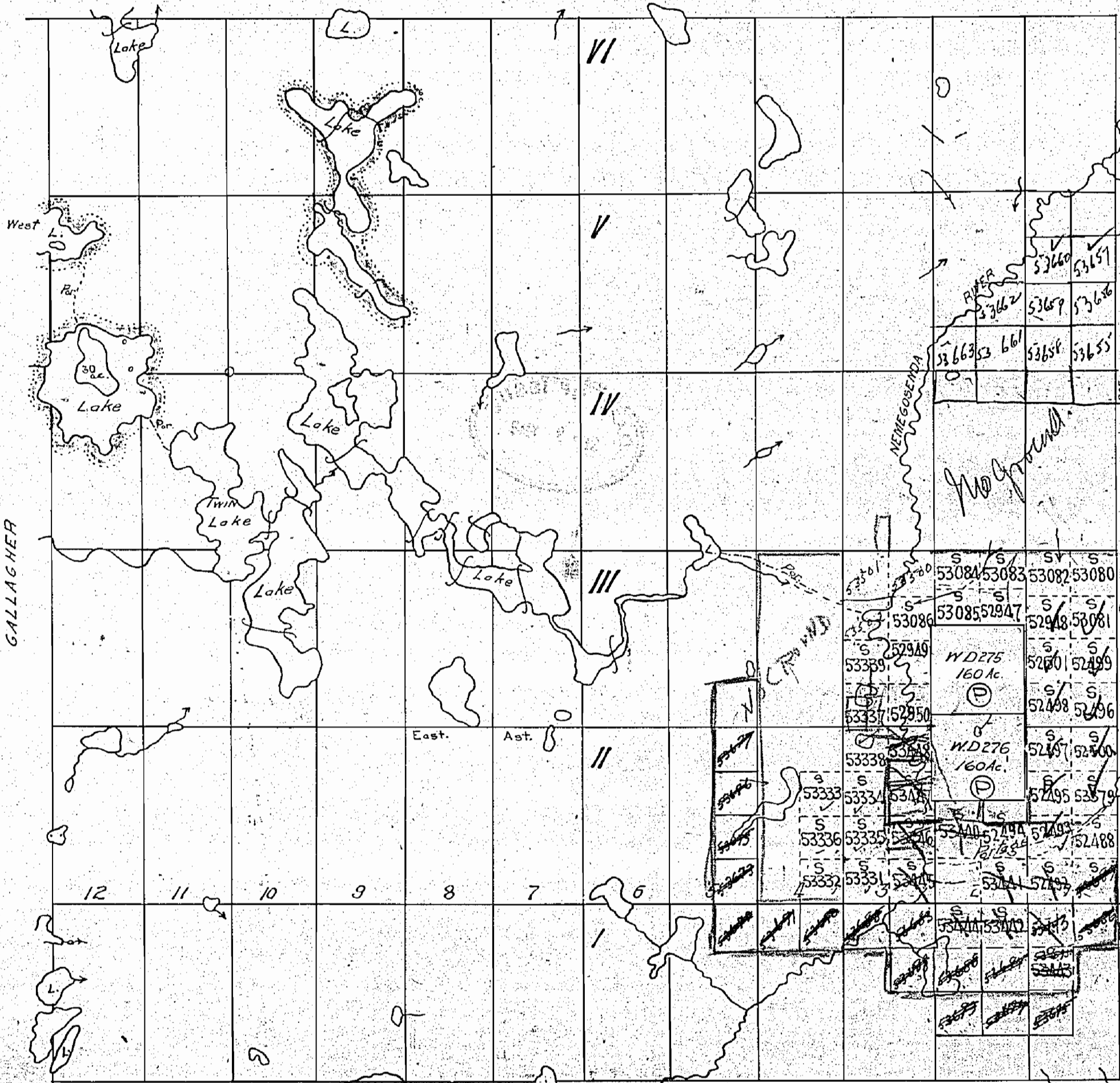
MENAUGHT

Sudbury District

SCALE 40 CHAINS TO 1 INCH

BORDEN

North Ast.
Mag. North.



GALLAGHER

North Ast. Run by O.L.S. L.V. Forke 1905
LACKNER

200' reservation by Dept. of L & F round certain lakes shown herein thus

M1019

10 19

BORDEN TWP

Twp 19

THE TOWNSHIP OF

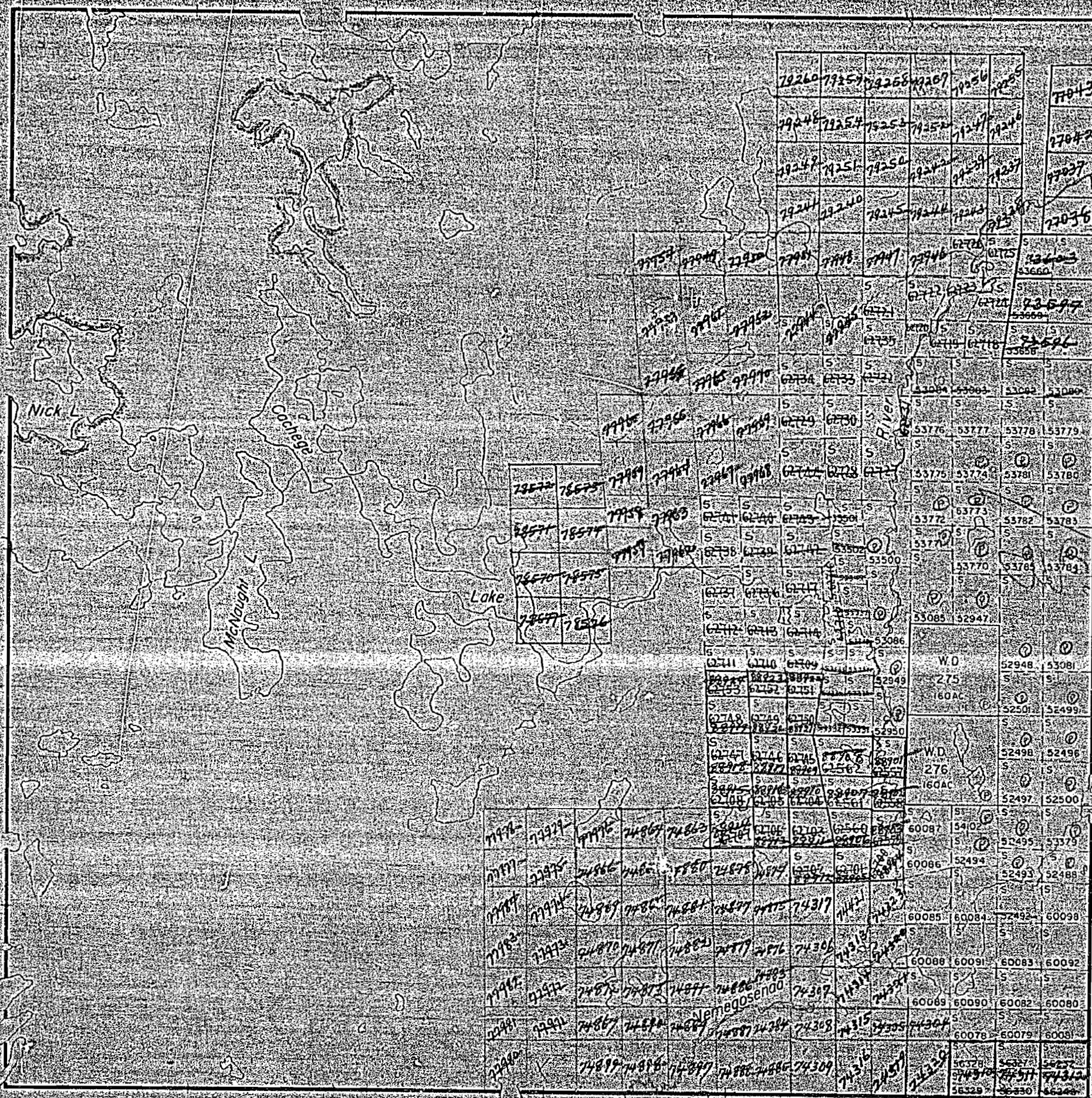
McNAUGHT

DISTRICT OF SUDBURY

SUDBURY MINING DIVISION

SCALE 1 INCH = 40 CHAINS

GALLAGHER TWP



LACKNER TWP

LEGEND

- PATENTED LAND
- CROWN LAND - SALE
- LEASES
- LOCATED LAND
- LICENSE OF OCCUPATION
- MINING RIGHTS ONLY
- SURFACE RIGHTS ONLY
- ROADS
- IMPROVED ROADS
- KING'S HIGHWAYS
- RAILWAYS
- POWER LINES
- MARSH OR MUSKEG
- MINES

NOTES

200 Ft Reserve to Dept of Land & Forests shown thus.



PLAN NO - 6 333

DEPARTMENT OF MINES - ONTARIO -

TWP 27

77-1019