

REFERENCES

AREAS WITHDRAWN FROM DISPOSITION

- M.R.O. - MINING RIGHTS ONLY
- S.R.O. - SURFACE RIGHTS ONLY
- M.+S. - MINING AND SURFACE RIGHTS

Description	Order No.	Date	Disposition	File

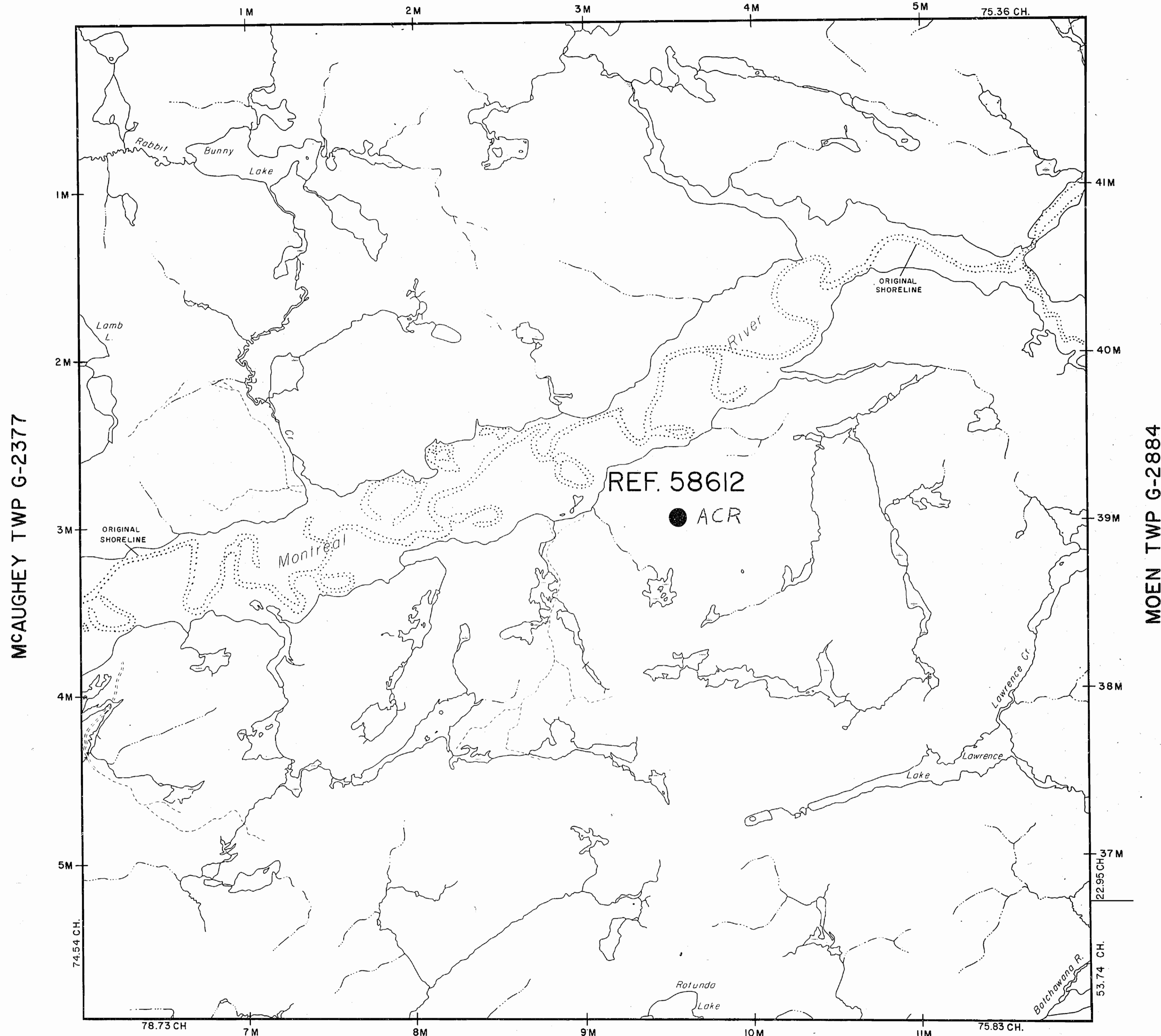
AREAS ADMINISTERED UNDER THE ONTARIO MINING ACT ARE SHOWN THUS



FOR STATUS OF THE REMAINDER OF THIS TOWNSHIP ENQUIRE AT THE ALGOMA CENTRAL RAILWAY OFFICES - SAULT STE. MARIE, ONTARIO.

ACR

HALLETT TWP G-2767



MCAUGHEY TWP G-2377

MOEN TWP G-2884

RUNNING TWP G-2423

LEGEND

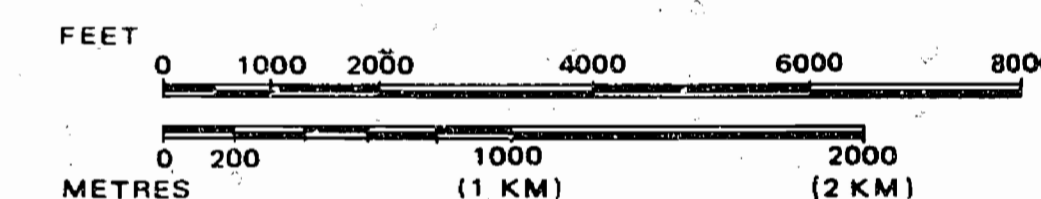
- HIGHWAY AND ROUTE No.
- OTHER ROADS
- TRAILS
- SURVEYED LINES:
  - TOWNSHIPS, BASE LINES, ETC.
  - LOTS, MINING CLAIMS, PARCELS, ETC.
- UNSURVEYED LINES:
  - LOT LINES
  - PARCEL BOUNDARY
  - MINING CLAIMS ETC.
- RAILWAY AND RIGHT OF WAY
- UTILITY LINES
- NON-PERENNIAL STREAM
- FLOODING OR FLOODING RIGHTS
- SUBDIVISION OR COMPOSITE PLAN
- RESERVATIONS
- ORIGINAL SHORELINE
- MARSH OR MUSKEG
- MINES
- TRAVERSE MONUMENT

DISPOSITION OF CROWN LANDS

TYPE OF DOCUMENT	SYMBOL
PATENT, SURFACE & MINING RIGHTS	
" SURFACE RIGHTS ONLY	
" MINING RIGHTS ONLY	
LEASE, SURFACE & MINING RIGHTS	
" SURFACE RIGHTS ONLY	
" MINING RIGHTS ONLY	
LICENCE OF OCCUPATION	
ORDER-IN-COUNCIL	
RESERVATION	
CANCELLED	
SAND & GRAVEL	

NOTE: MINING RIGHTS IN PARCELS PATENTED PRIOR TO MAY 6, 1913, VESTED IN ORIGINAL PATENTEE BY THE PUBLIC LANDS ACT, R.S.O. 1970, CHAP. 380, SEC. 63, SUBSEC 1.

SCALE: 1 INCH = 40 CHAINS



TOWNSHIP  
**MCPARLAND**  
 M.N.R. ADMINISTRATIVE DISTRICT  
**WAWA**  
 MINING DIVISION  
**SAULT STE. MARIE**  
 LAND TITLES / REGISTRY DIVISION  
**ALGOMA**

Ministry of Natural Resources  
 Land Management Branch  
 Ontario

Date: MARCH, 1984

Number  
**G-2796**

SAULT STE. MARIE  
 RECEIVED  
 JUN 6 1984  
 A.M. P.M.  
 7 8 9 10 11 12 1 2 3 4 5 6

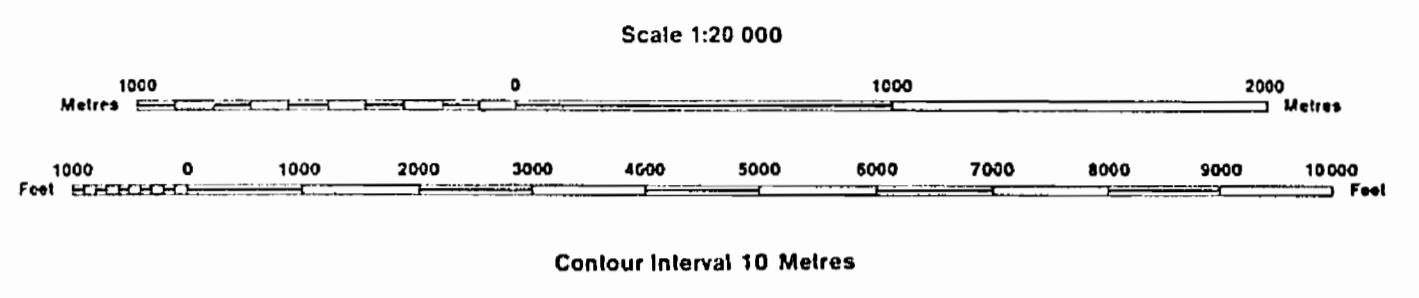
*Reopened Feb. 12/88 - CK*

### INDEX TO LAND DISPOSITION

PLAN  
**G-2796**  
 TOWNSHIP

M.N.R. ADMINISTRATIVE DISTRICT  
**WAWA**  
 MINING DIVISION  
**SAULT STE. MARIE**  
 LAND TITLES/REGISTRY DIVISION  
**ALGOMA**

## McPARLAND



#### AREAS WITHDRAWN FROM DISPOSITION

- MRO - Mining Rights Only
- SRO - Surface Rights Only
- M + S - Mining and Surface Rights

#### SYMBOLS

Description	Order No.	Date	Disposition	File
Boundary				
Township, Meridian, Baseline				
Road allowance; surveyed; shoreline				
Lot/Concession; surveyed; unsurveyed				
Parcel; surveyed; unsurveyed				
Right-of-way; road; railway; utility				
Reservation				
Cliff, Pit, Pile				
Contour				
Interpolated; Approximate; Depression				
Control point (horizontal)				
Flooded land				
Mine head frame				
Pipeline (above ground)				
Railway; single track; double track; abandoned				
Road; highway, county, township; access; trail, bush				
Shoreline (original); Transmission line				
Wounded area				

The 1980 Magnetic Bearing  
 Approx. Annual Change  
 is increasing

#### DISPOSITION OF CROWN LANDS

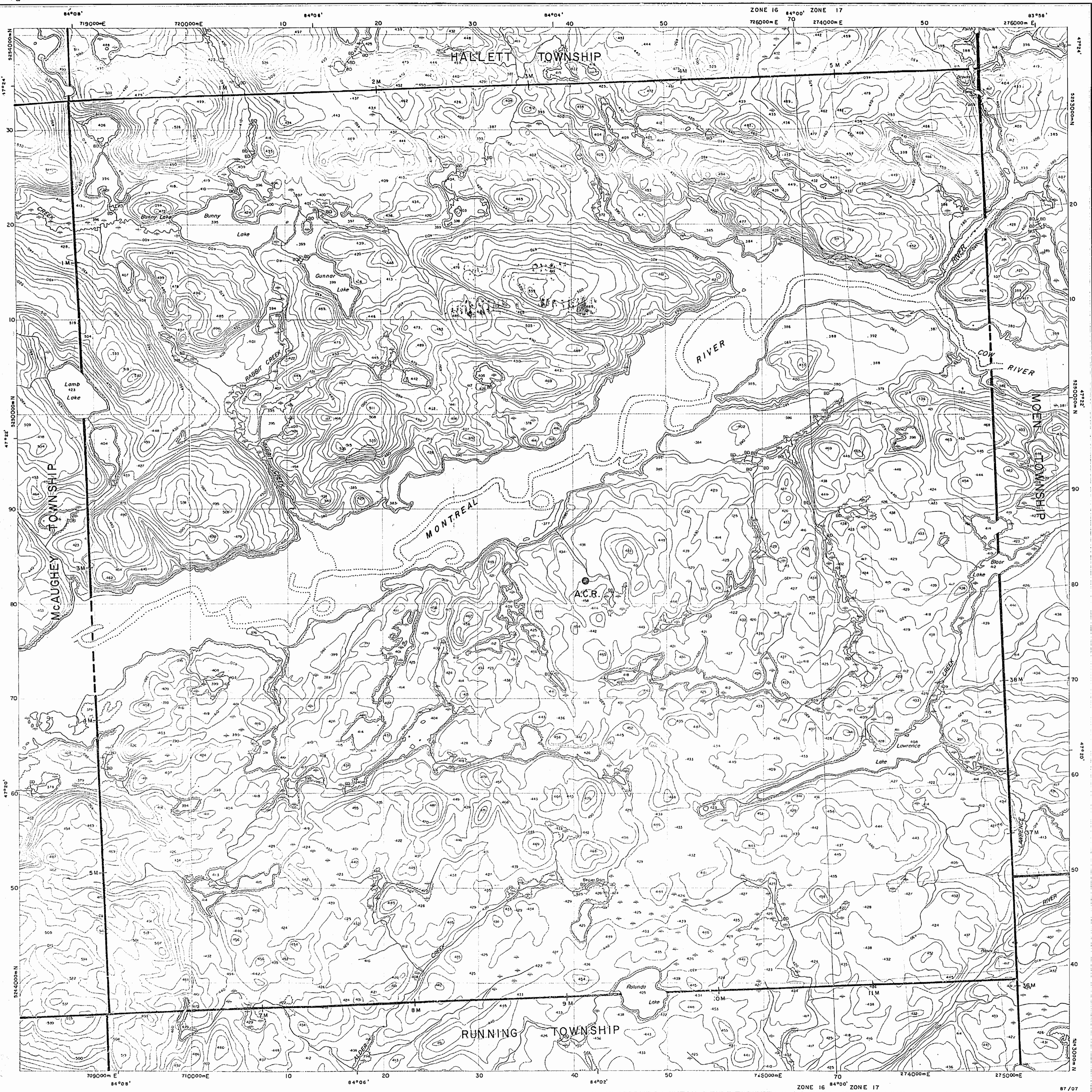
Patent	
Surface & Mining Rights	○
Surface Rights Only	○
Mining Rights Only	○
Lease	
Surface & Mining Rights	■
Surface Rights Only	■
Mining Rights Only	■
Licence of Occupation	▼
Order-in-Council	OC
Cancelled	⊙
Reservation	⊙
Sand & Gravel	⊙

THE INFORMATION THAT APPEARS ON THIS MAP HAS BEEN COMPILED FROM VARIOUS SOURCES, AND ACCURACY IS NOT GUARANTEED. THOSE WISHING TO STAKE MINING CLAIMS SHOULD CONSULT WITH THE MINING RECORDER, MINISTRY OF NORTHERN DEVELOPMENT AND MINES, FOR ADDITIONAL INFORMATION ON THE STATUS OF THE LANDS SHOWN HEREON.

**DATE OF ISSUE**  
**FEB 12 1986**  
 SAULT STE. MARIE  
 MINING RECORDERS' OFFICE

Map base and land disposition drafting by Surveys and Mapping Branch, Ministry of Natural Resources.

The disposition of land, location of lot fabric and parcel boundaries on this index was compiled for administrative purposes only.

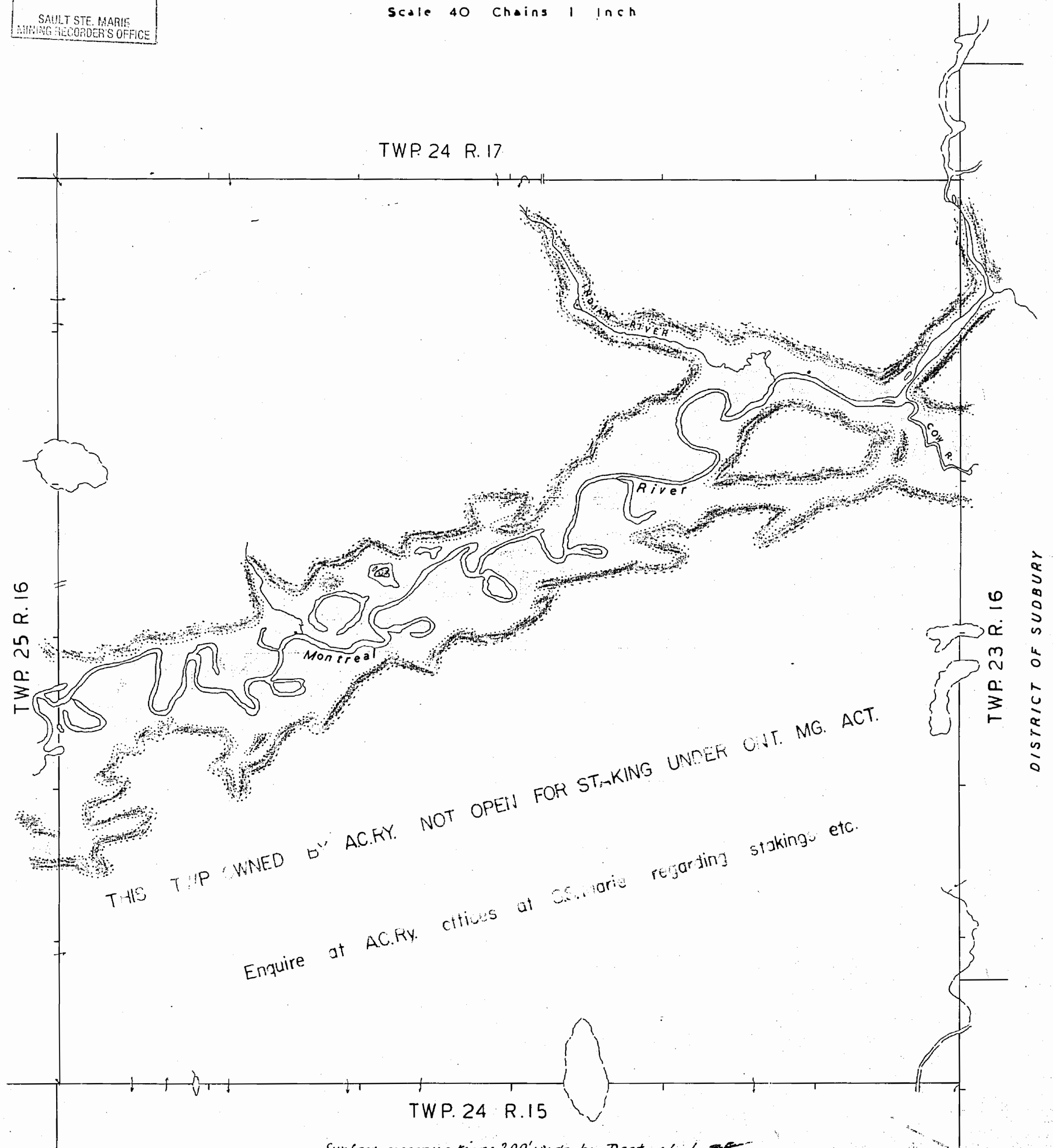


G. 2796

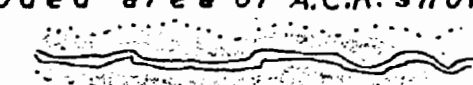

# TWP. 24 RANGE 16

Sault Ste. Marie Mining Division  
DISTRICT OF ALGOMA  
Scale 40 Chains 1 Inch

DATE OF ISSUE  
DEC 11 1958  
SAULT STE. MARIE  
MINING RECORDER'S OFFICE



THIS TWP OWNED BY AC.RY. NOT OPEN FOR STAKING UNDER ONT. MG. ACT.  
Enquire at AC.Ry. offices at Sault Ste. Marie regarding stakings etc.

Flooded area of A.C.R. shown thus:  Surface reservations 200' wide by Dept. of L. & P. shown hereon thus: 

Replaced by mylar July 6/84

G.S.