

1023

# Mc WILLIAMS

SUDBURY MINING DIVISION

SUDBURY  
MINING DIV.  
**RECEIVED**  
OCT 17 1969  
AM 7:20 PM 1:20

OLD  
Nov 10/72

HOBBS

SHALLOW LAKE

Beaverlooth Lake

VI

5+7

BEAVER CREEK  
Now  
Sinton

12

11

10

9

8

7

6

5

4

3

2

1

DANA

III

SUBDIVISION

POR.

POR.

3-86  
92-13 QUARTZ  
LILLIAN 105352

II

WILLED

5+7

1-4-72  
QUARTZ  
LILLIAN 105352

3-86

© T ©  
0410 5041

400 surface rights reservation around all lakes & rivers

GIBBONS

# M 1023

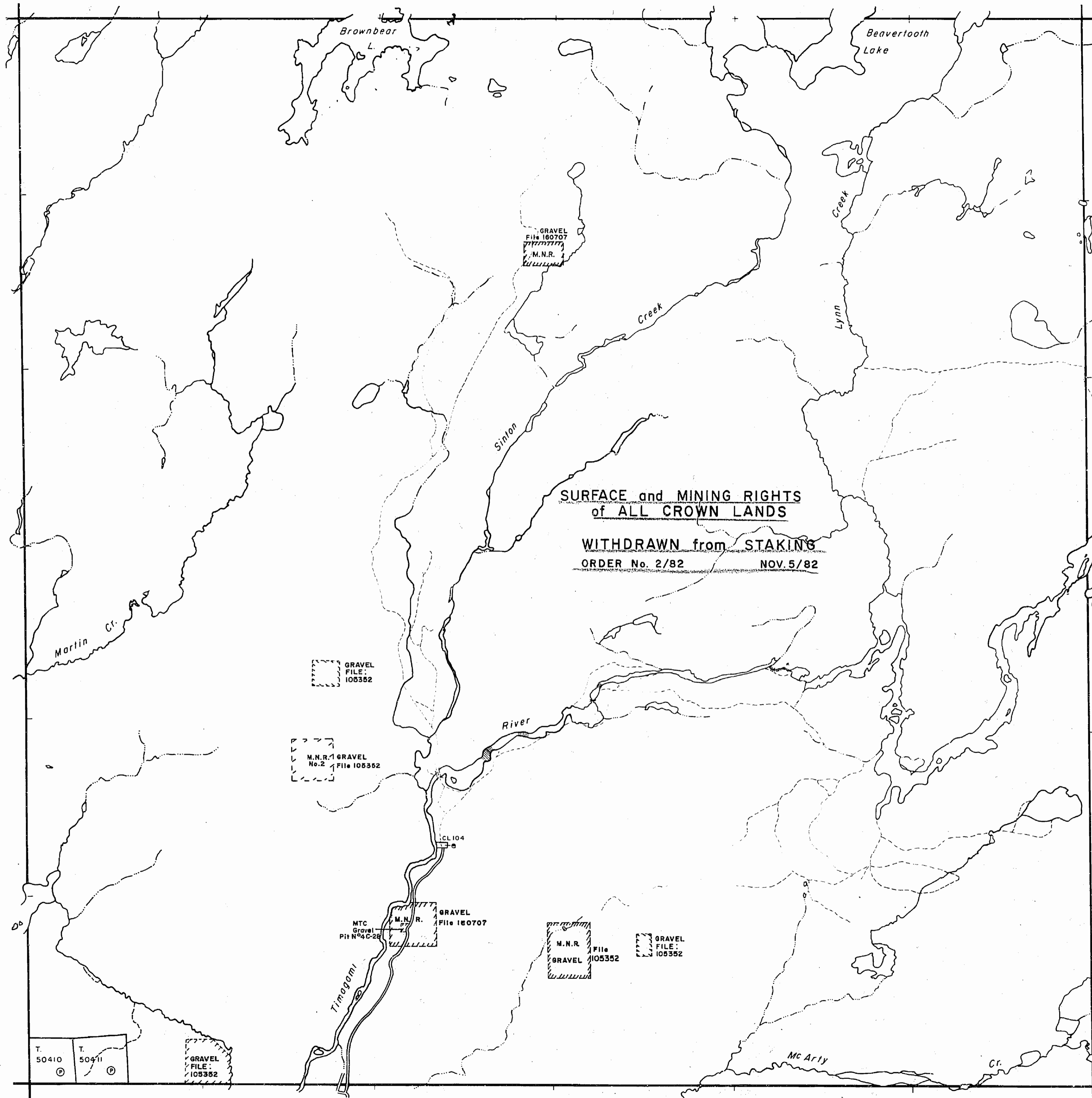


HOBBS TWP. M.932

DANA TWP. M-747

THISTLE TWP. M-1156

GIBBONS TWP. M.835



NOTES

400' surface rights reservation along the shores of all lakes and rivers.

Subdivision of this township into lots and concessions has been annulled.

Township closed to staking effective May 8 '78, Sec.38(f) of Mining Act.

\* IN SERVICE 1983 10 01 - JN

LEGEND

- PATENTED LAND Ⓟ or \*
- PATENTED FOR SURFACE RIGHTS ONLY Ⓞ
- LEASE Ⓛ
- LICENSE OF OCCUPATION L.O.
- CROWN LAND SALES C.S.
- LOCATED LAND Loc.
- CANCELLED C.
- MINING RIGHTS ONLY M.R.O.
- SURFACE RIGHTS ONLY S.R.O.
- HIGHWAY & ROUTE NO. 17
- ROADS — — — — —
- TRAILS - - - - -
- RAILWAYS + + + + +
- POWER LINES — — — — —
- MARSH OR MUSKEG Ⓜ
- MINES Ⓜ

\*used only with summer resort locations or when space is limited

TOWNSHIP OF

**MCWILLIAMS**

DISTRICT OF  
NIPISSING

SUDBURY  
MINING DIVISION

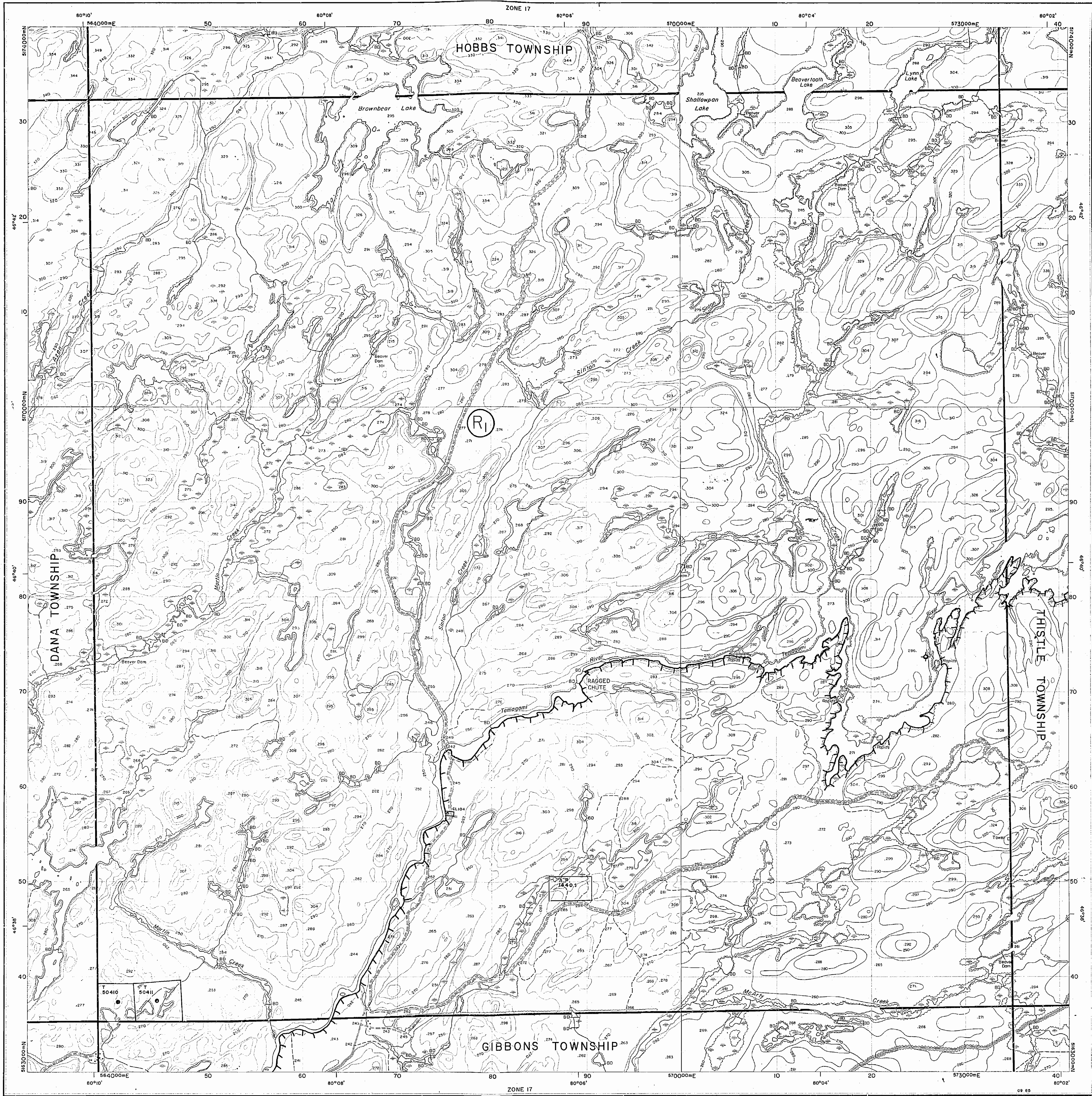
SCALE : 1 INCH = 40 CHAINS (1/2 MILE)

DR. Colin V. T  
DATE August/72

PLAN NO. **M.1023**

ONTARIO  
MINISTRY OF NATURAL RESOURCES  
SURVEYS AND MAPPING BRANCH



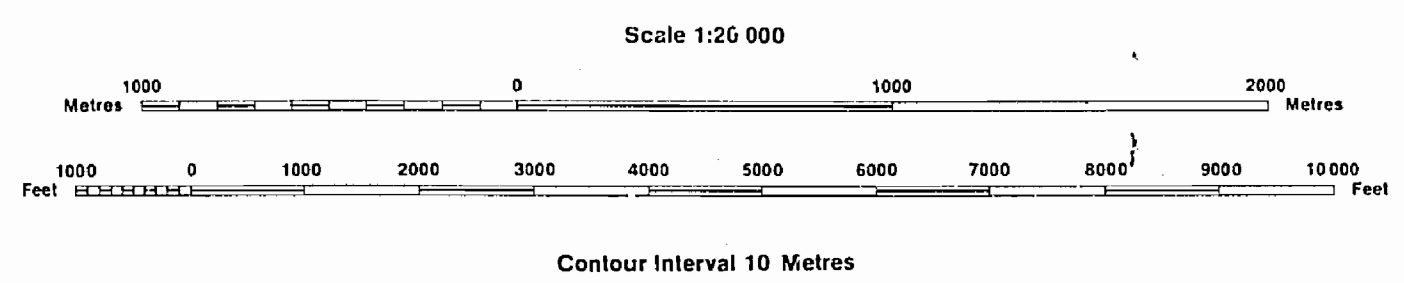


**INDEX TO LAND DISPOSITION**

PLAN  
 G-2910  
 TOWNSHIP

M.N.R. ADMINISTRATIVE DISTRICT  
**NORTH BAY**  
 MINING DIVISION  
**SUDBURY**  
 LAND TITLES/REGISTRY DIVISION  
**NIPISSING**

**McWILLIAMS**



**SYMBOLS**

Boundary	
Township, Meridian, Baseline	—
Road allowance; surveyed	—
shoreline	—
Lot/Concession; surveyed	—
unsurveyed	—
Parcel; surveyed	—
unsurveyed	—
Right-of-way; road	—
railway	—
utility	—
Reservation	—
Cliff, Pit, Pile	—
Contour	—
Interpolated	—
Approximate	—
Depression	—
Control point (horizontal)	—
Flooded land	—
Mine head frame	—
Pipeline (above ground)	—
Railway; single track	—
double track	—
abandoned	—
Road; highway, county, township	—
access	—
trail, bush	—
Shoreline (original)	—
Transmission line	—
Wooded area	—

**AREAS WITHDRAWN FROM DISPOSITION**

MRO - Mining Rights Only
SRO - Surface Rights Only
M+S - Mining and Surface Rights

Description	Order No.	Date	Disposition	File
Sec. 36/80	W.2/82	05/11/82	M+S	

Part of order W 2/82 REOPENED by order O-M. 01/90 NEA effective April 3, 1990 at 7:00 AM E.S.T.

**DATE OF ISSUE**  
 JUL 15 1986  
 SUDBURY  
 MINING RECORDER'S OFFICE

**NOTES**

SUBDIVISION OF THIS TOWNSHIP INTO LOTS AND CONCESSIONS WAS ANNULLED 8 DECEMBER, 1953.

"THIS MAP SHOWS THE APPROXIMATE LOCATION OF THE BOUNDARIES OF THE AREA WHICH IS THE SUBJECT OF CURRENT LITIGATION. THE EXACT LOCATION WILL BE CONFIRMED BY THE PARTIES TO THE ACTION"

**DISPOSITION OF CROWN LANDS**

Patent	
Surface & Mining Rights	●
Surface Rights Only	○
Mining Rights Only	○
Lease	
Surface & Mining Rights	■
Surface Rights Only	□
Mining Rights Only	□
Licence of Occupation	▼
Order-in-Council	OC
Cancelled	○
Reservation	○
Sand & Gravel	○
LAND USE PERMIT	○

THE INFORMATION THAT APPEARS ON THIS MAP HAS BEEN COMPILED FROM VARIOUS SOURCES, AND ACCURACY IS NOT GUARANTEED. THOSE WISHING TO STAKE MINING CLAIMS SHOULD CONSULT WITH THE MINING RECORDER, MINISTRY OF NORTHERN DEVELOPMENT AND MINES, FOR ADDITIONAL INFORMATION ON THE STATUS OF THE LANDS SHOWN HEREON.



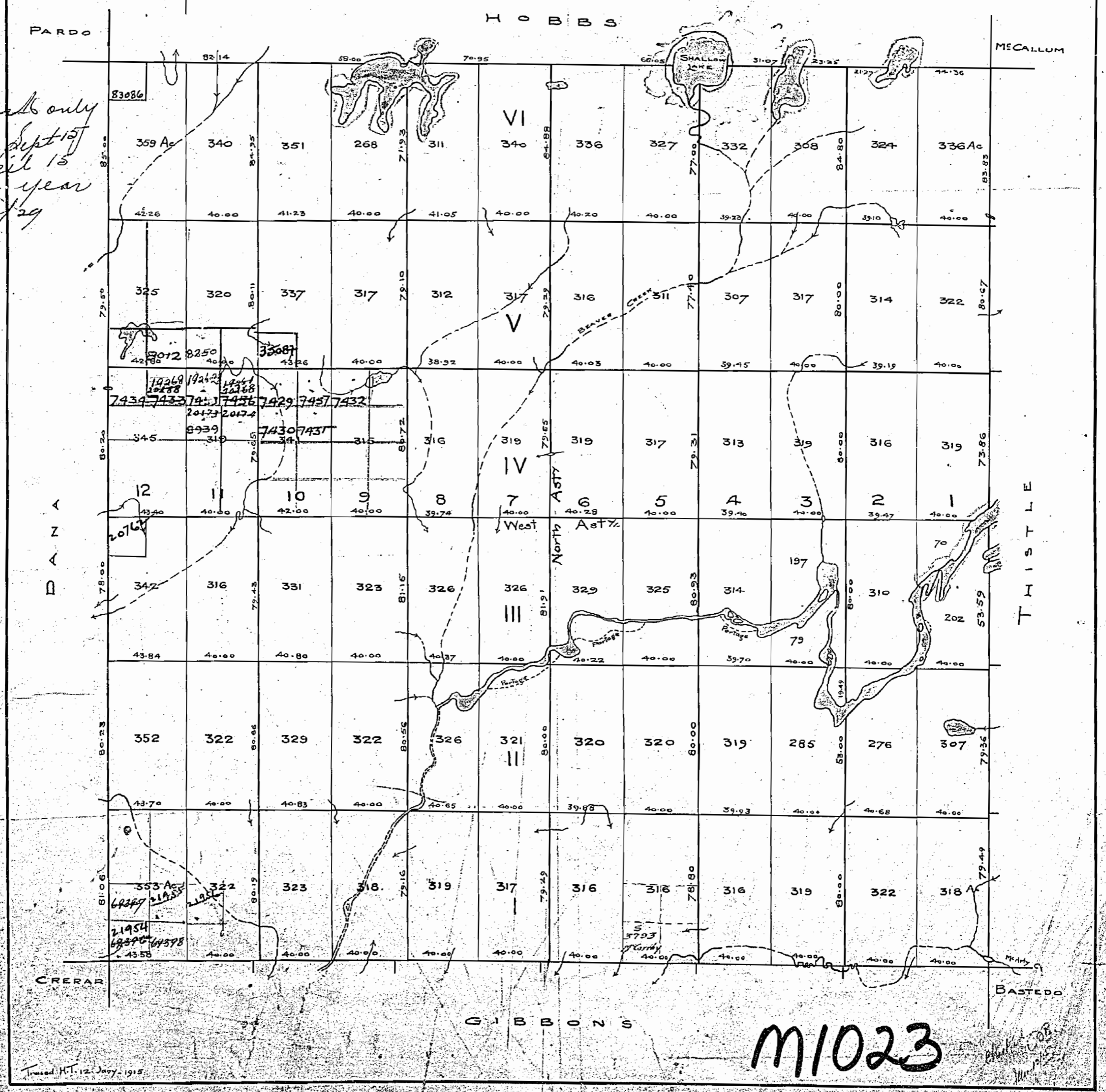
# M<sup>c</sup> WILLIAMS

DISTRICT OF NIPISSING

Surveyed by W<sup>m</sup> Mahlon Davis O.S. 1894.

- Scale 40 Chains = 1 Inch -

*Canada*  
*Res.*  
*2009*  
*4000*



*Can work only  
Between Sept 15  
and April 15  
in each year  
After Sept. 16/29  
(no number)*

**M1023**

Traced H.T. 12. July. 1915

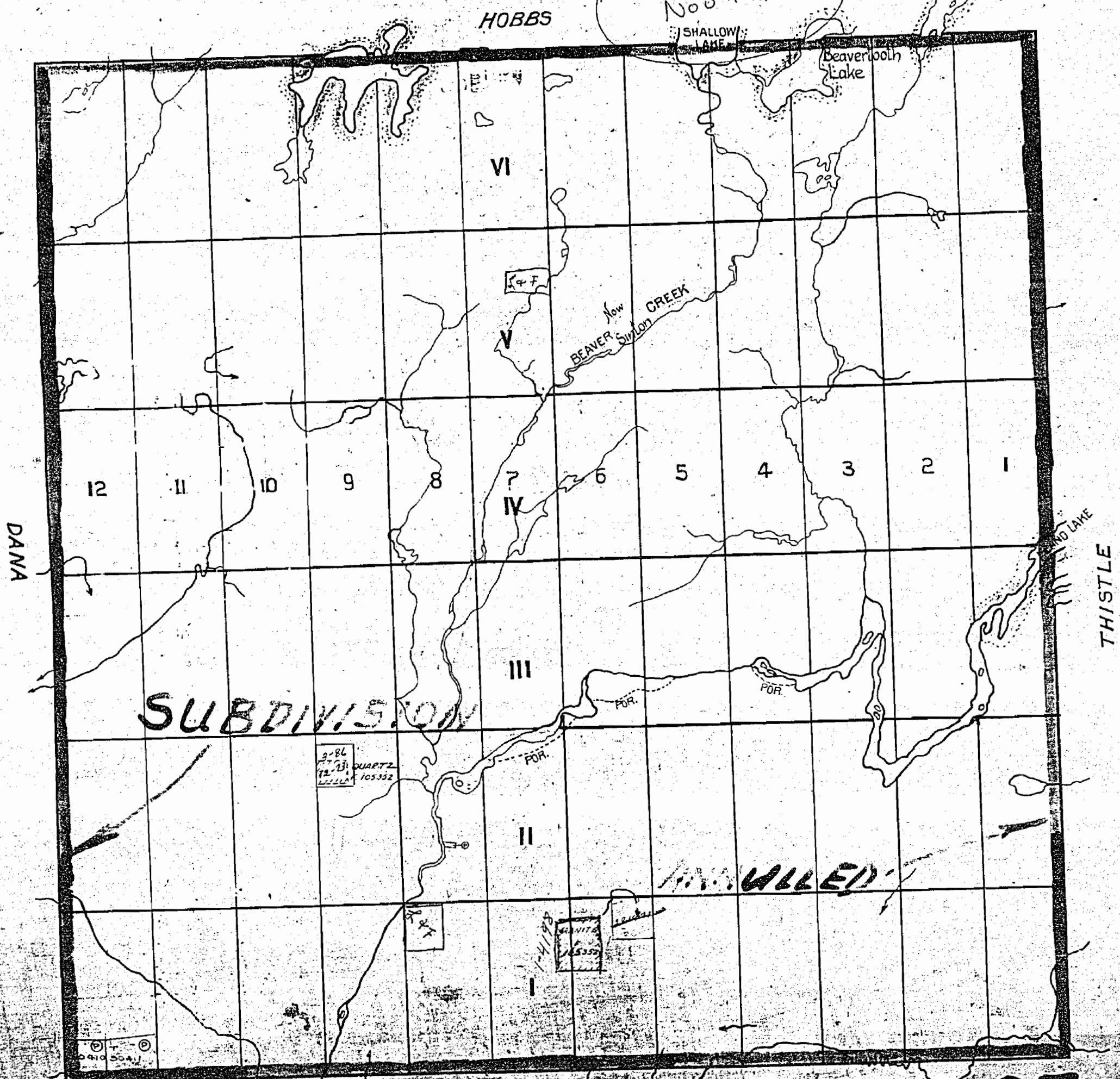
1023

# McWILLIAMS

SUDBURY MINING DIVISION

SUDBURY  
MINING DIV.  
**RECEIVED**  
OCT 17 1969  
AM 10:13:19 1969

OLD  
Nov 10/72



400 surface rights reservation around all lakes & rivers.

GIBBONS

# M 1023



0195-0  
PWT 2MALLIWM  
0195-0

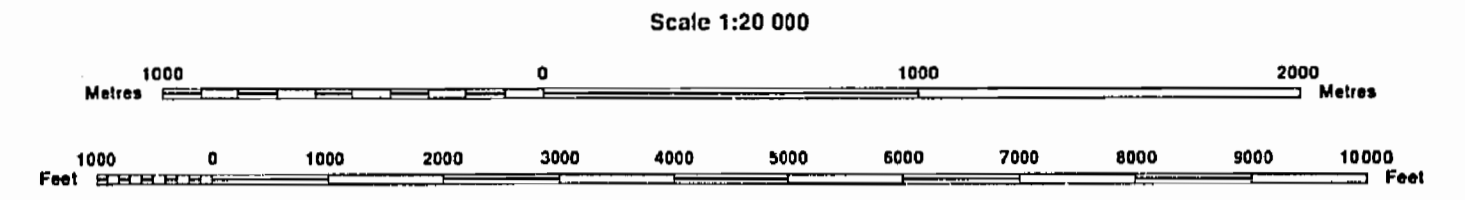


INDEX TO LAND DISPOSITION

PLAN  
G-2910  
TOWNSHIP

M.N.R. ADMINISTRATIVE DISTRICT  
NORTH BAY  
MINING DIVISION  
SUDBURY  
LAND TITLES/REGISTRY DIVISION  
NIPISSING

McWILLIAMS



AREAS WITHDRAWN FROM DISPOSITION

MRO - Mining Rights Only  
SRO - Surface Rights Only  
M+S - Mining and Surface Rights

Description	Order No.	Disposition	File
275.34.190	0-3-22/74	M+S	195-2
275.34.190	0-3-22/74	M+S	195-2

Part of order W 2/82 REOPENED by order  
O.M. 01/90 NER effective April 3/90 at 7:00 AM E.S.T.

SYMBOLS

Boundary	
Township, Meridian, Baseline	—
Road allowance; surveyed	—
shoreline	—
*Lot/Concession; surveyed	—
unsurveyed	—
Parcel; surveyed	—
unsurveyed	—
Right-of-way; road	—
railway	—
utility	—
Reservation	—
Cliff, Pit, Pile	—
Contour	—
Interpolated	—
Approximate	—
Depression	—
Control point (horizontal)	—
Flooded land	—
Mine head frame	—
Pipeline (above ground)	—
Railway; single track	—
double track	—
abandoned	—
Road; highway, county, township	—
access	—
trail, bush	—
Shoreline (original)	—
Transmission line	—
Wooded area	—

NOTES

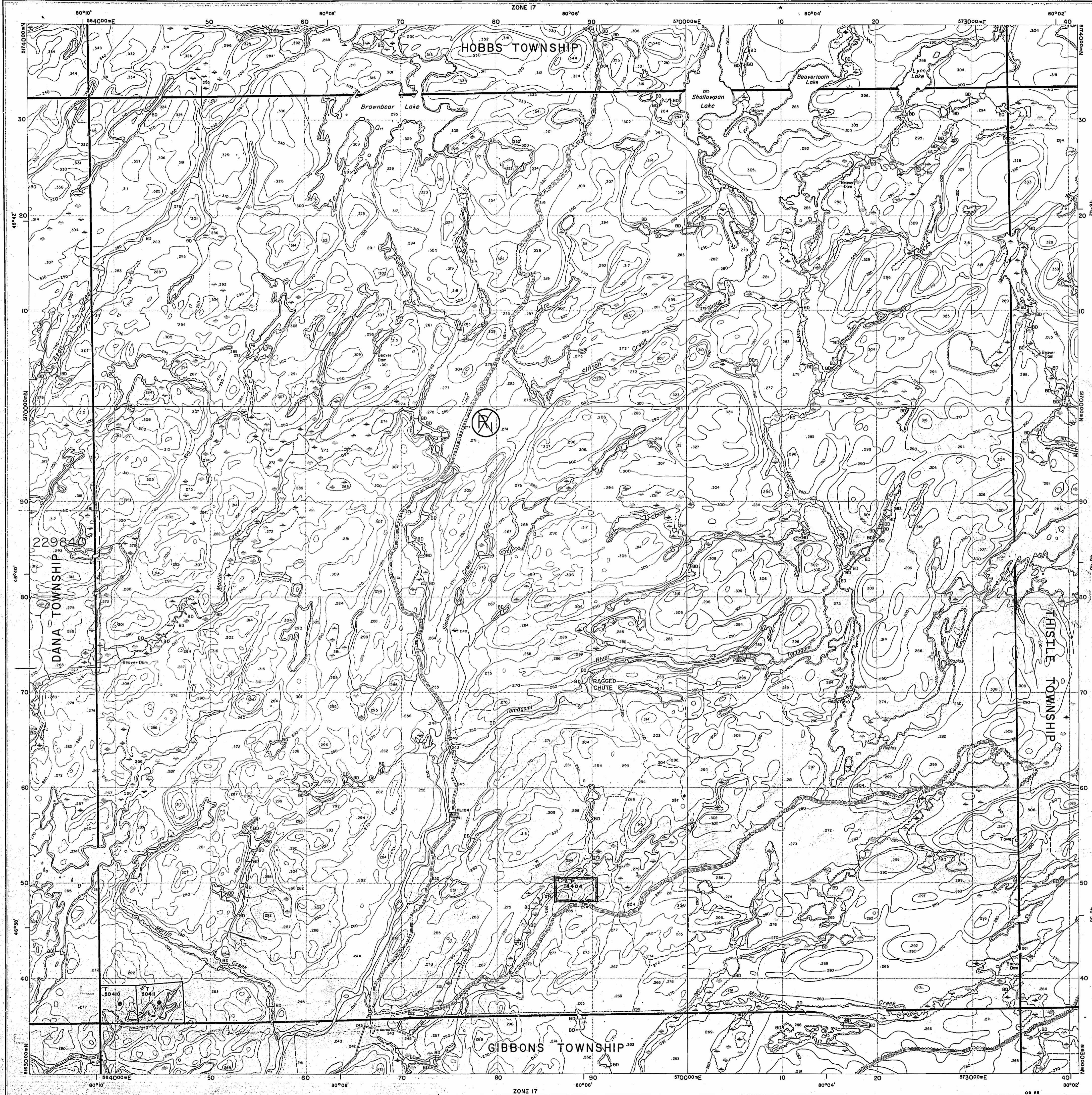
SUBDIVISION OF THIS TOWNSHIP INTO LOTS AND CONCESSIONS WAS  
ANNULLED 8 DECEMBER, 1953.

DISPOSITION OF CROWN LANDS

Patent	
Surface & Mining Rights	●
Surface Rights Only	○
Mining Rights Only	○
Lease	
Surface & Mining Rights	■
Surface Rights Only	□
Mining Rights Only	□
Licence of Occupation	▼
Order-in-Council	OC
Cancelled	⊙
Reservation	⊙
Sand & Gravel	⊙
LAND USE PERMIT	⊙

THE INFORMATION THAT  
APPEARS ON THIS MAP  
HAS BEEN COMPILED  
FROM VARIOUS SOURCES,  
AND ACCURACY IS NOT  
GUARANTEED. THOSE  
WISHING TO STAKE MINING  
CLAIMS SHOULD CONSULT  
WITH THE MINING  
RECORDER, MINISTRY OF  
NORTHERN DEVELOPMENT  
AND MINES, FOR ADDITIONAL  
INFORMATION ON THE STATUS OF THE  
LANDS SHOWN HEREON.

McWILLIAMS





# OFFICE USE ONLY

HOBBS TWP. M.932

## NOTES

400' surface rights reservation along the shores of all lakes and rivers.

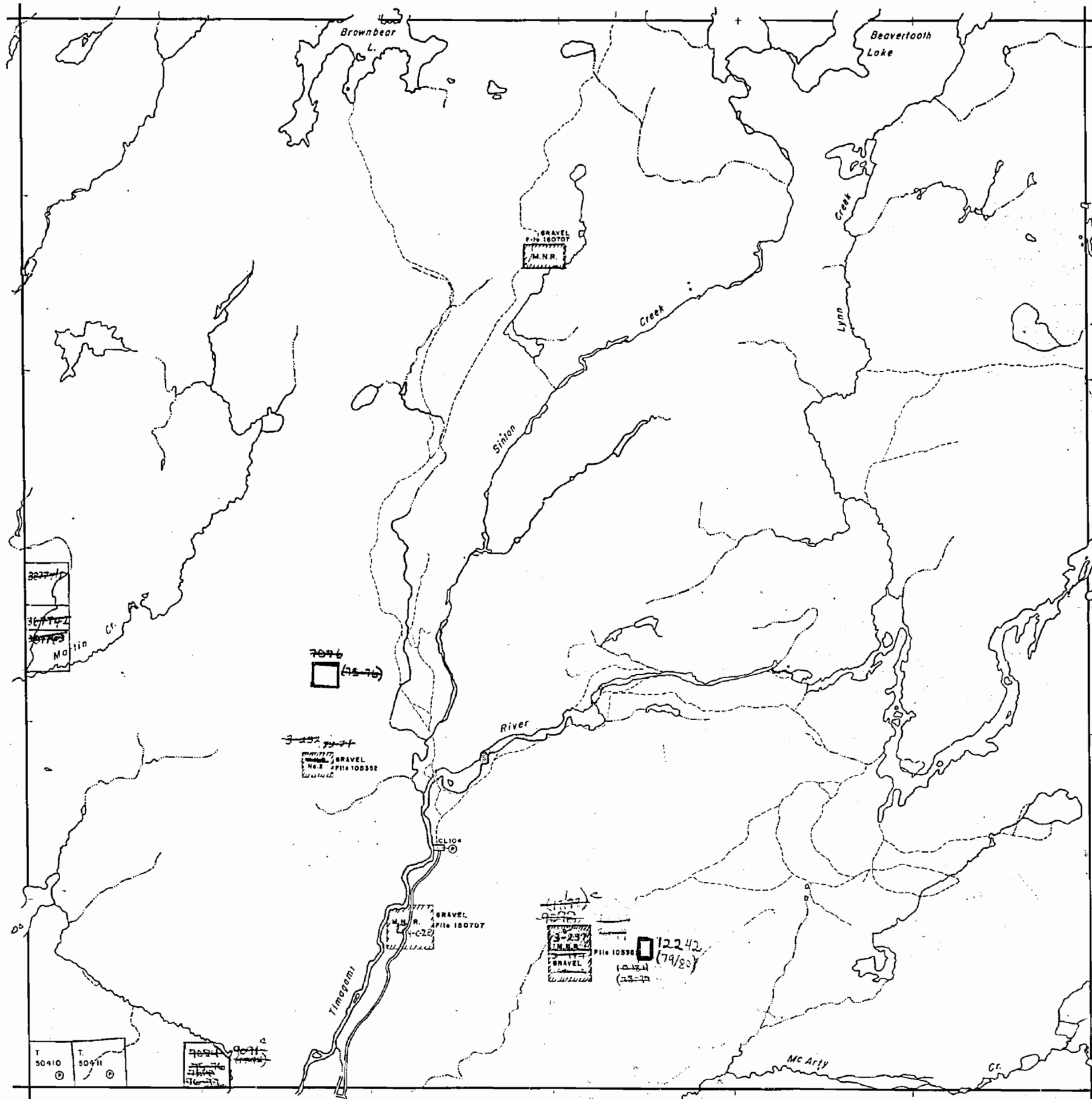
Subdivision of this township into lots and concessions has been annulled.

~~BLANKET QUARRY PERMIT  
No. 1021 COVERING PART  
OF MCWILLIAMS TOWNSHIP, C.~~

TOWNSHIP CLOSED TO STAKING  
EFFECTIVE MAY 8, 1978  
SECTION 38(f) THE MINING ACT.

DANA TWP. M-747

THISTLE TWP. M-1156



## LEGEND

PATENTED LAND	Ⓟ or Ⓢ
PATENTED FOR SURFACE RIGHTS ONLY	Ⓢ
LEASE	Ⓛ
LICENSE OF OCCUPATION	L.O.
CROWN LAND SALES	C.S.
LOCATED LAND	Loc.
CANCELLED	C.
MINING RIGHTS ONLY	M.R.O.
SURFACE RIGHTS ONLY	S.R.O.
HIGHWAY & ROUTE NO.	17
ROADS	—
TRAILS	---
RAILWAYS	—+—
POWER LINES	—+—+—
MARSH OR MUSKEG	~
MINES	Ⓧ

\*used only with summer resort locations or when space is limited

TOWNSHIP OF

# MCWILLIAMS

DISTRICT OF  
NIPISSING

SUDBURY  
MINING DIVISION

SCALE : 1 INCH = 40 CHAINS (1/2 MILE)

DR. Colin V. T.  
DATE August / 72

PLAN NO. **M.1023**

MINISTRY OF  
NATURAL RESOURCES  
ONTARIO

GIBBONS TWP. M-835

Township Closed to Staking  
Effective Nov. 5, 1982,  
Section 36(1)(a) The Mining  
Act.

80° 02' 27" approx.

46° 37' 29" approx.

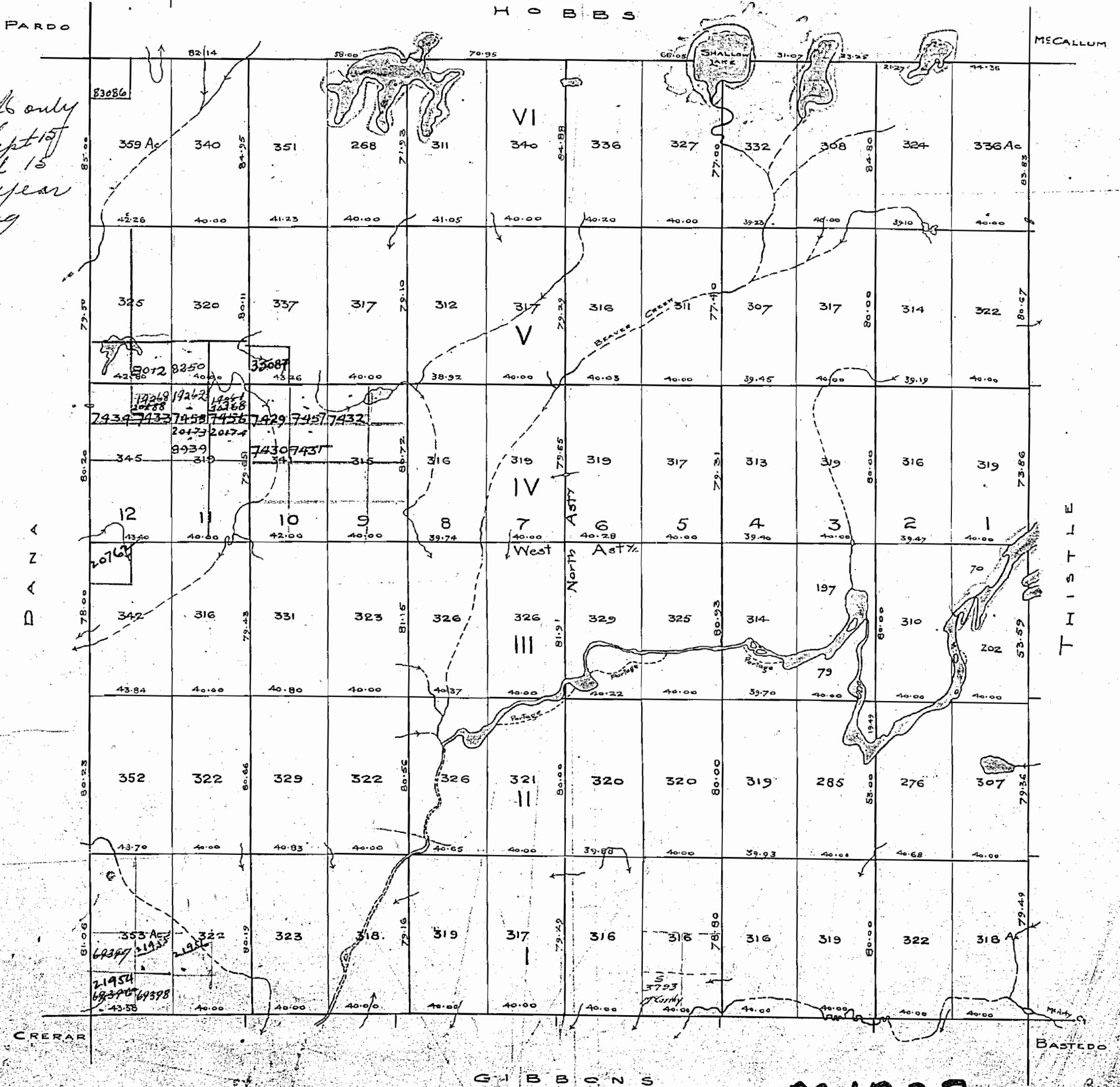
# M<sup>c</sup> WILLIAMS

DISTRICT OF NIPISSING

Surveyed by W<sup>m</sup> Mahlon Davis O.L.S. 1894.

- Scale 40 Chains = 1 Inch -

*Canada*  
*2009*  
*400*  
*Res*



*Can walk only  
Between Sept 1st  
and April 15  
in each year  
After Sept 16/29  
(no number)*

*12*  
*11*  
*10*  
*9*  
*8*  
*7*  
*6*  
*5*  
*4*  
*3*  
*2*  
*1*

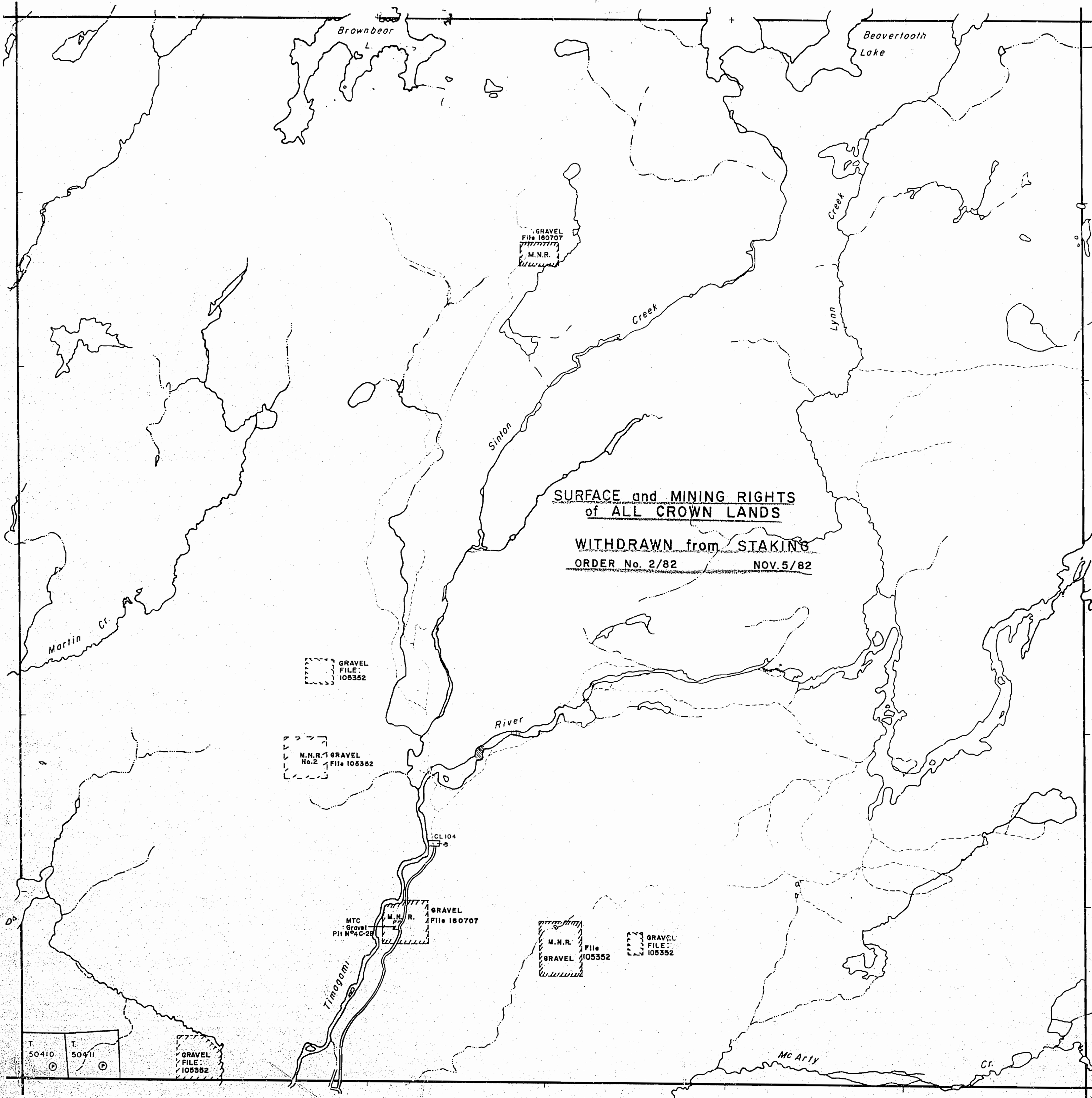
*353 Ac*  
*69399*  
*21954*  
*69390*  
*69398*  
*4358*

**M1023**



HOBBS TWP. M-932

DANA TWP. M-747



GIBBONS TWP. M-835

THISTLE TWP. M-1156

NOTES

400' surface rights reservation along the shores of all lakes and rivers.

Subdivision of this township into lots and concessions has been annulled.

Township closed to staking effective May 8 '78, Sec.38(f) of Mining Act.

\* IN SERVICE 1983 10 01 - J.W.

LEGEND

- PATENTED LAND (P or \*)
- PATENTED FOR SURFACE RIGHTS ONLY (P)
- LEASE (L)
- LICENSE OF OCCUPATION (L.O.)
- CROWN LAND SALES (C.S.)
- LOCATED LAND (Loc.)
- CANCELLED (C)
- MINING RIGHTS ONLY (M.R.O.)
- SURFACE RIGHTS ONLY (S.R.O.)
- HIGHWAY & ROUTE NO. (17)
- ROADS (— — — — —)
- TRAILS (— · — · — · —)
- RAILWAYS (— + — + — + —)
- POWER LINES (— — — — —)
- MARSH OR MUSKEG (— · — · — · —)
- MINES (M)

\*used only with summer resort locations or when space is limited

TOWNSHIP OF

**MCWILLIAMS**

DISTRICT OF NIPISSING

SUDBURY MINING DIVISION

SCALE: 1 INCH = 40 CHAINS (1/2 MILE)

DR. Colin V. T.  
DATE August /72

PLAN NO. **M.1023**

ONTARIO  
MINISTRY OF NATURAL RESOURCES  
SURVEYS AND MAPPING BRANCH



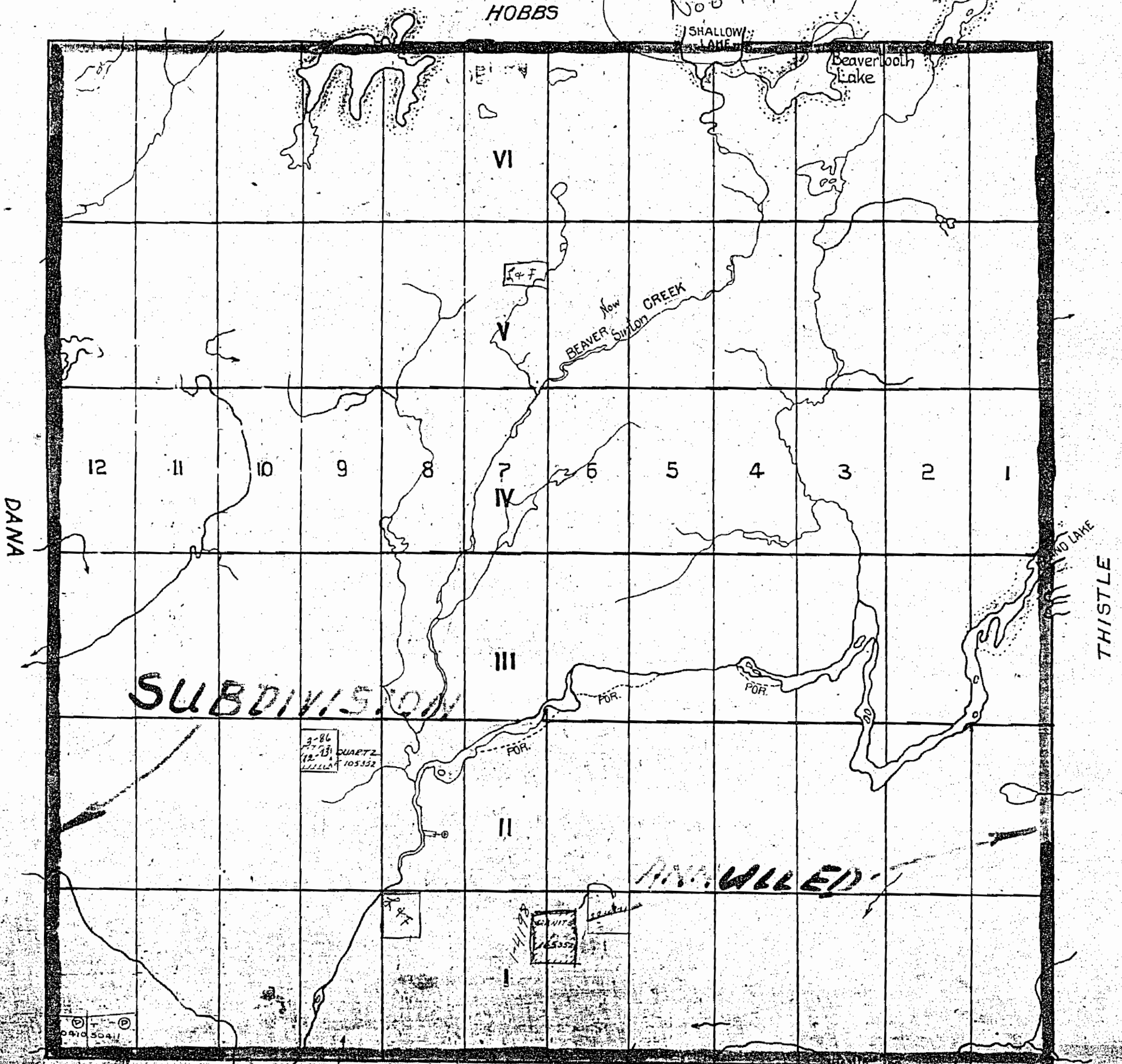
1023

# McWILLIAMS

SUDBURY MINING DIVISION

SUDBURY  
MINING DIV.  
**RECEIVED**  
OCT 17 1969  
AM 4:00 PM

OLD  
Nov 10/72



400 surface rights reservation around all lakes & rivers.

GIBBONS

# M 1023

McWilliams  
Twp.  
1023