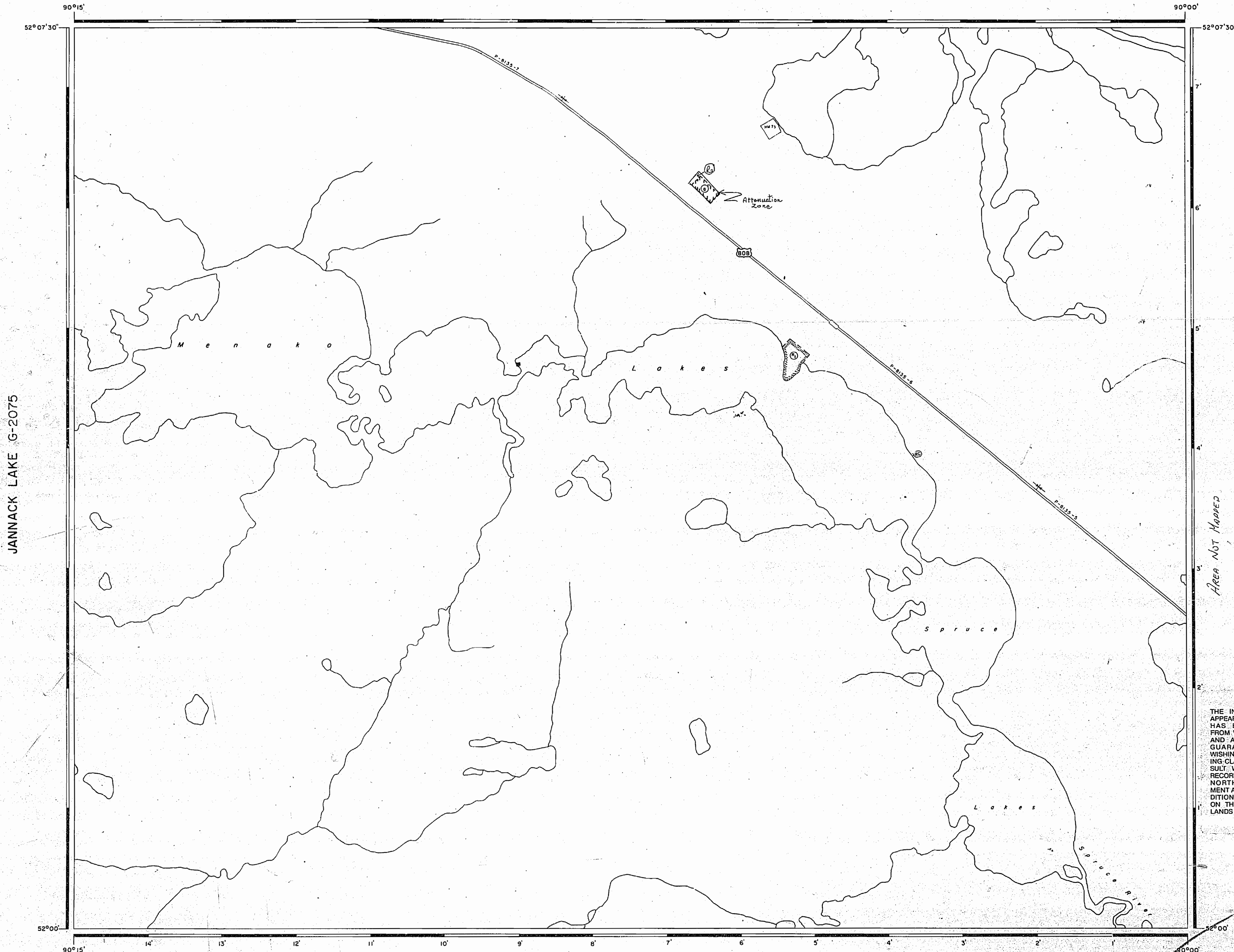


DOWDEN LAKE G-2011



JANNACK LAKE G-2075

Obustiga Lake G-2157

LEGEND

HIGHWAY AND ROUTE No.	
OTHER ROADS	
TRAILS	
SURVEYED LINES:	
TOWNSHIPS, BASE LINES, ETC.	
LOTS, MINING CLAIMS, PARCELS, ETC.	
UNSURVEYED LINES:	
LOT LINES	
PARCEL BOUNDARY	
MINING CLAIMS ETC.	
RAILWAY AND RIGHT OF WAY	
UTILITY LINES	
NON-FERRELLIAL STREAM	
FLOODING OR FLOODING RIGHTS	
SUBDIVISION OR COMPOSITE PLAN	
RESERVATIONS	
ORIGINAL SHORELINE	
MARSH OR MUSKEG	
MINES	
TRAVERSE MONUMENT	

DISPOSITION OF CROWN LANDS

TYPE OF DOCUMENT	SYMBOL
PATENT, SURFACE & MINING RIGHTS	
SURFACE RIGHTS ONLY	
MINING RIGHTS ONLY	
LEASE, SURFACE & MINING RIGHTS	
SURFACE RIGHTS ONLY	
MINING RIGHTS ONLY	
LICENCE OF OCCUPATION	
ORDER-IN-COUNCIL	
RESERVATION	
CANCELLED	
SAND & GRAVEL	

NOTE: MINING RIGHTS IN PARCELS PATENTED PRIOR TO MAY 6, 1913, VESTED IN ORIGINAL PATENTEE BY THE PUBLIC LANDS ACT, R.S.O. 1970, CHAP. 380, SEC. 63, SUBSEC. 1.

REFERENCES

AREAS WITHDRAWN FROM DISPOSITION

M.R.O. - MINING RIGHTS ONLY
 S.R.O. - SURFACE RIGHTS ONLY
 M.+S. - MINING AND SURFACE RIGHTS

Description	Order No.	Date	Disposition	File
①	44877	5/5/77	SR O	163474
②	Public Lands Act	20/2/84	SR O	
③	REMOTE COTTAGE			

SAND AND GRAVEL

④ QUARRY PERMIT

PATRICIA MINING DIV.
RECEIVED
 MAY 16 1984
 A.M. 7:00-11:30 P.M. 1:00-4:00

SCALE: 1 INCH = 40 CHAINS

FEET 0 1000 2000 4000 6000 8000
 METERS 0 200 400 600 800 (1 KM) (2 KM)

AREA **MENAKO LAKES**

M.N.R. ADMINISTRATIVE DISTRICT
SIoux LOOKOUT
 MINING DIVISION
PATRICIA
 LAND TITLES / REGISTRY DIVISION
KENORA (PATRICIA PORTION)

Ministry of Land Management
 Natural Resources Branch
 Ontario

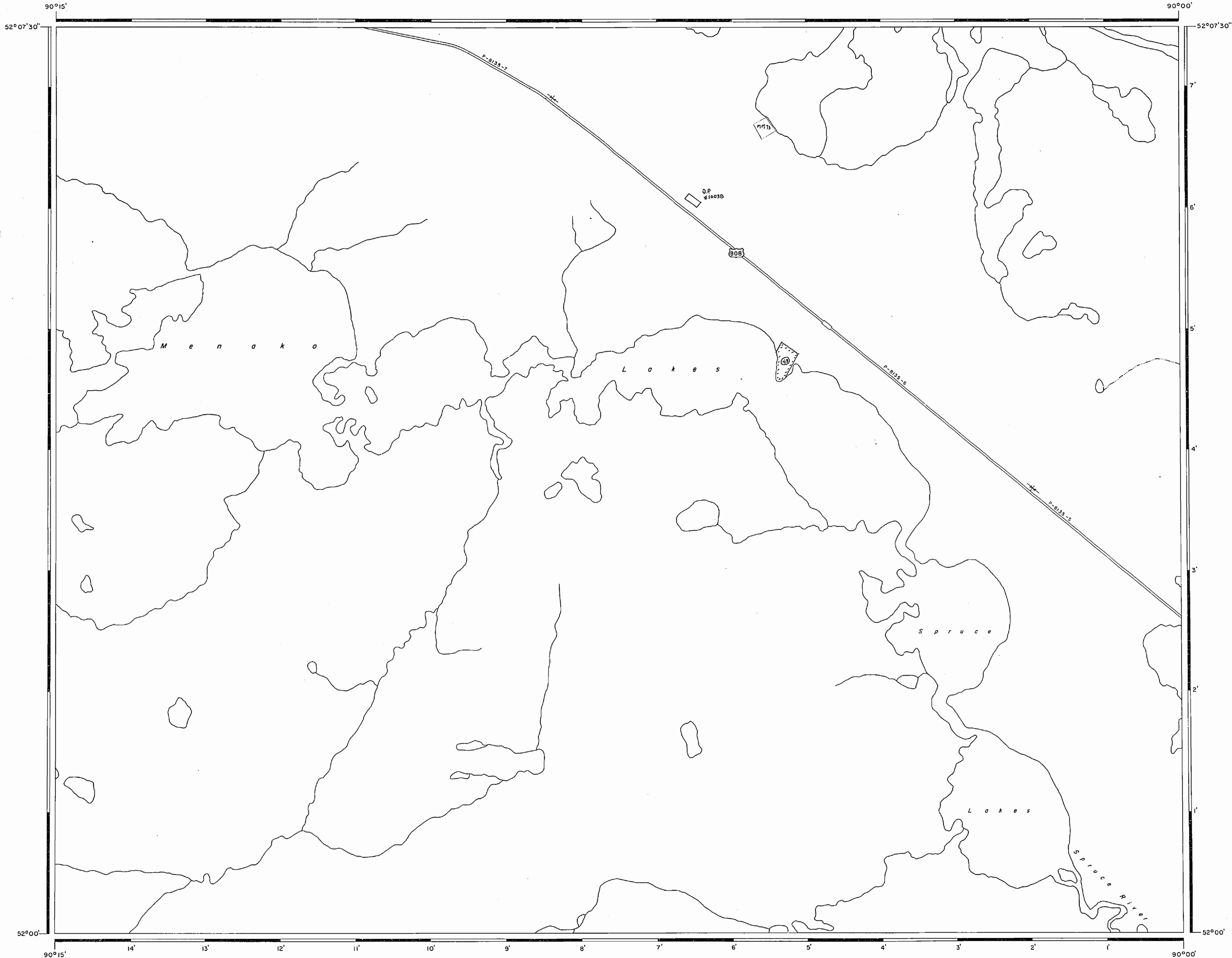
Date: JANUARY, 1984 Number: **G-2123**

Blow-up 521901

Area Not Mapped

THE INFORMATION THAT APPEARS ON THIS MAP HAS BEEN COMPILED FROM VARIOUS SOURCES, AND ACCURACY IS NOT GUARANTEED. THOSE WISHING TO STAKE MINING CLAIMS SHOULD CONSULT WITH THE MINING RECORDER, MINISTRY OF NORTHERN DEVELOPMENT AND MINES, FOR ADDITIONAL INFORMATION ON THE STATUS OF THE LANDS SHOWN HEREON.

DOWDEN LAKE M.3272



JANNACK LAKE M.3322

AREA OF
**MENAKO
LAKES**

DISTRICT OF
KENORA
PATRICIA PORTION
PATRICIA
MINING DIVISION

SCALE: 1-INCH = 40 CHAINS

LEGEND

- PATENTED LAND (P) or (●)
 - PATENTED FOR SURFACE RIGHTS ONLY (○)
 - LEASES (○)
 - LICENSE OF OCCUPATION (L.O.)
 - CROWN LAND SALE (C.S.)
 - LOCATED LAND SALE (Loc.)
 - CANCELLED (C.)
 - MINING RIGHTS ONLY (M.R.O.)
 - SURFACE RIGHTS ONLY (S.R.O.)
 - HIGHWAY & ROUTE No. (17)
 - ROADS (—)
 - TRAILS (---)
 - RAILWAYS (—+—)
 - POWER LINES (—+—)
 - MARSH OR MUSKEG (—+—)
 - MINES (X)
- *used only with summer resort locations or when space is limited

NOTES

400' Surface Rights Reservation Around the Shores of All Lakes and Rivers
 (43) 1948/47 S.R.O. withdrawn from prospecting, staking out sale or lease May 5, 1947

PATRICIA
MINING DIV.
RECEIVED
FEB -9 1973
AM 7 8 9 10 11 12 1 2 3 4 5 6 PM

6-2123

NATIONAL TOPOGRAPHIC SERIES 53B1

PLAN NO. **M.3321**

MINISTRY OF
NATURAL RESOURCES
ONTARIO