

MERRICK
Twp. File

MERRICK

6697/10 Con 2 C.S. 26
HER MAJESTY
SEP 27 1900
PLANNING DIVISION

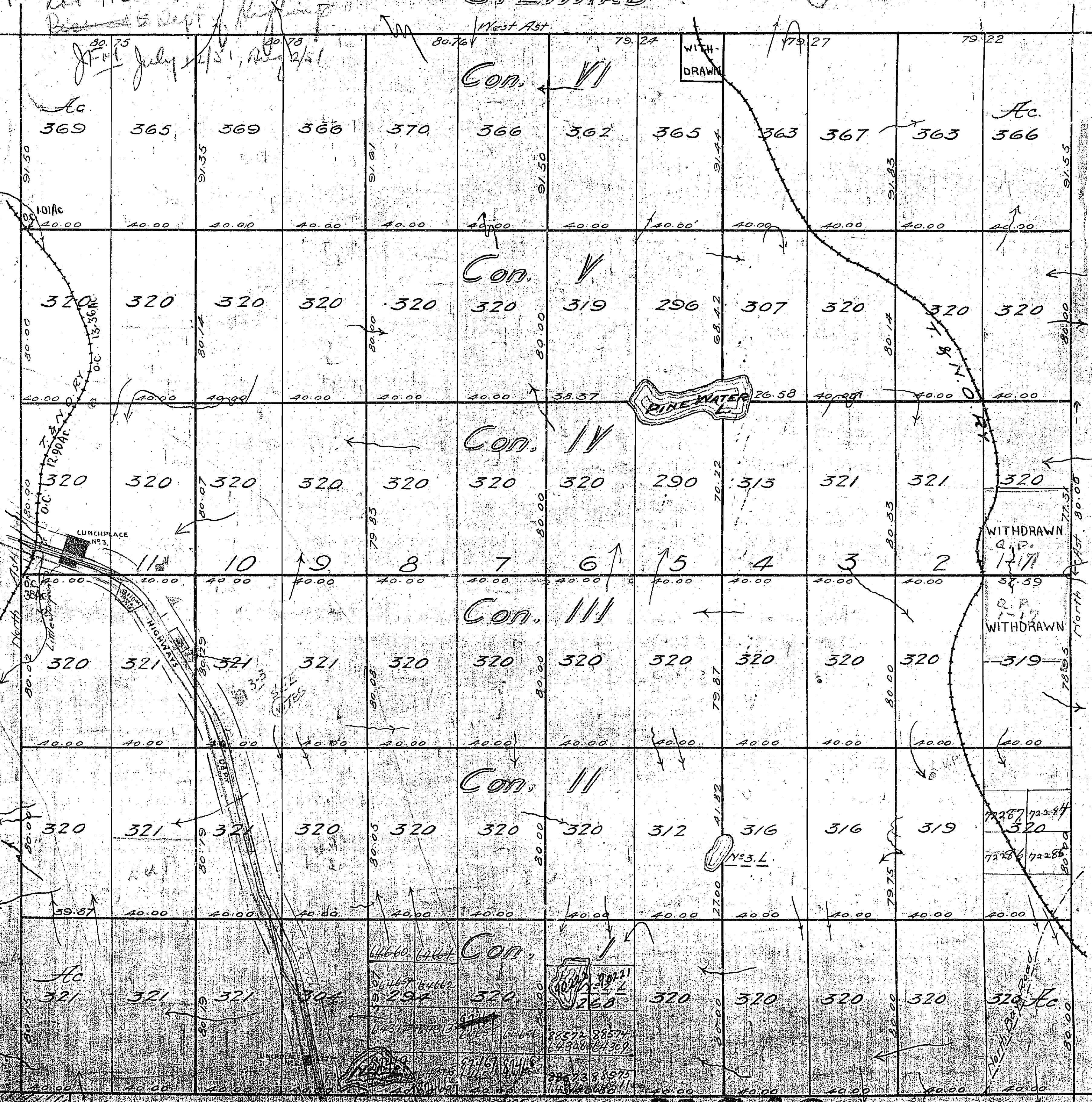
District of Nipissing

Scale: 40 chains to an inch

Lot 11 Con 3
4.82 acres
Pension Reserve Dept of Highways to remove
Ground J.F. 07 July 5/51
Lot 11 Con 4 to Pension Reserve
Pension Reserve Dept of Highways

C.P. 3-3
T. 40.125
M862

STEWARD



BLYTH

MULOCK

862

WIDDIFIELD

M862

Sgd. George Rambolt
Ottawa Nov 6th 1884

Improved Roads shown in Red
Surveyed under instructions by O.S. C.E. Bush, 1931
Limits of Reserve as surveyed by O.S. B. H., 1932

By Order of Council dated Nov 29/1939, 600 feet on each side of the centre line of certain
highways and being reserved from disposition
by Order in Council dated Dec 21/1939, 100 feet on each side of 4 of the
highways as vested in the Dept. of Highways
Limits of Reserve as shown hereon from plans on individual Lot Files of

Stewart Twp.

SUDBURY MINING DIV. RECEIVED JUN 24 1970

THE TOWNSHIP OF

MERRICK

DISTRICT OF NIPISSING

SUDBURY MINING DIVISION

SCALE: 1-INCH=40 CHAINS

LEGEND

PATENTED LAND	Ⓟ
CROWN LAND SALE	C.S.
LEASES	Ⓛ
LOCATED LAND	Loc.
LICENSE OF OCCUPATION	L.O.
MINING RIGHTS ONLY	M.R.O.
SURFACE RIGHTS ONLY	S.R.O.
ROADS	— — — — —
IMPROVED ROADS	— — — — —
KING'S HIGHWAYS	— II —
RAILWAYS	— + + + —
POWER LINES	— — — — —
MARSH OR MUSKEG	* * *
MINES	Ⓧ
CANCELLED	C.

NOTES

400' Surface Rights Reservation, ground all Lakes and Rivers.

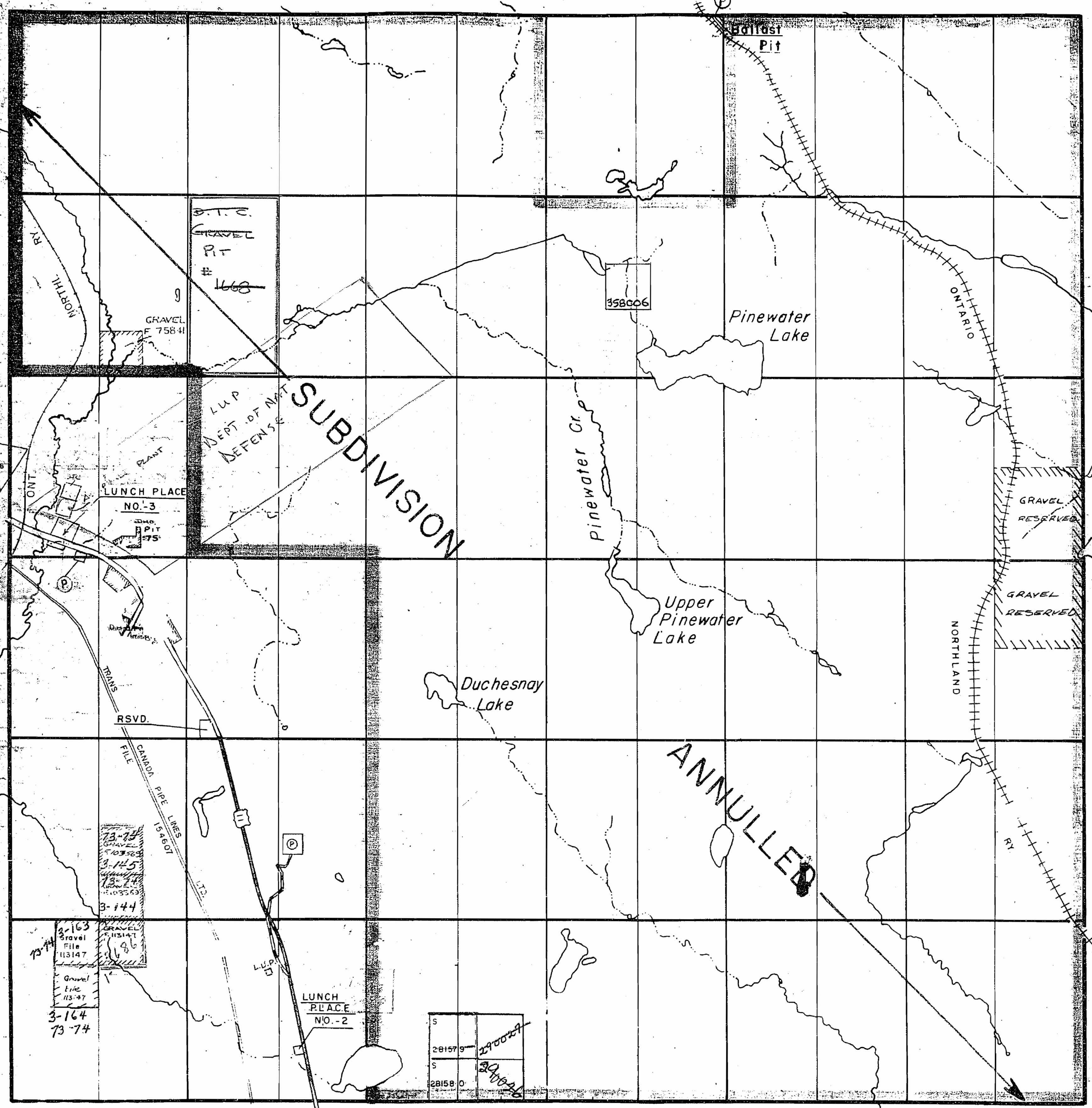
PLAN NO.- M-862

DEPARTMENT OF MINES

— ONTARIO —

Blyth Twp.

Mulock Twp.

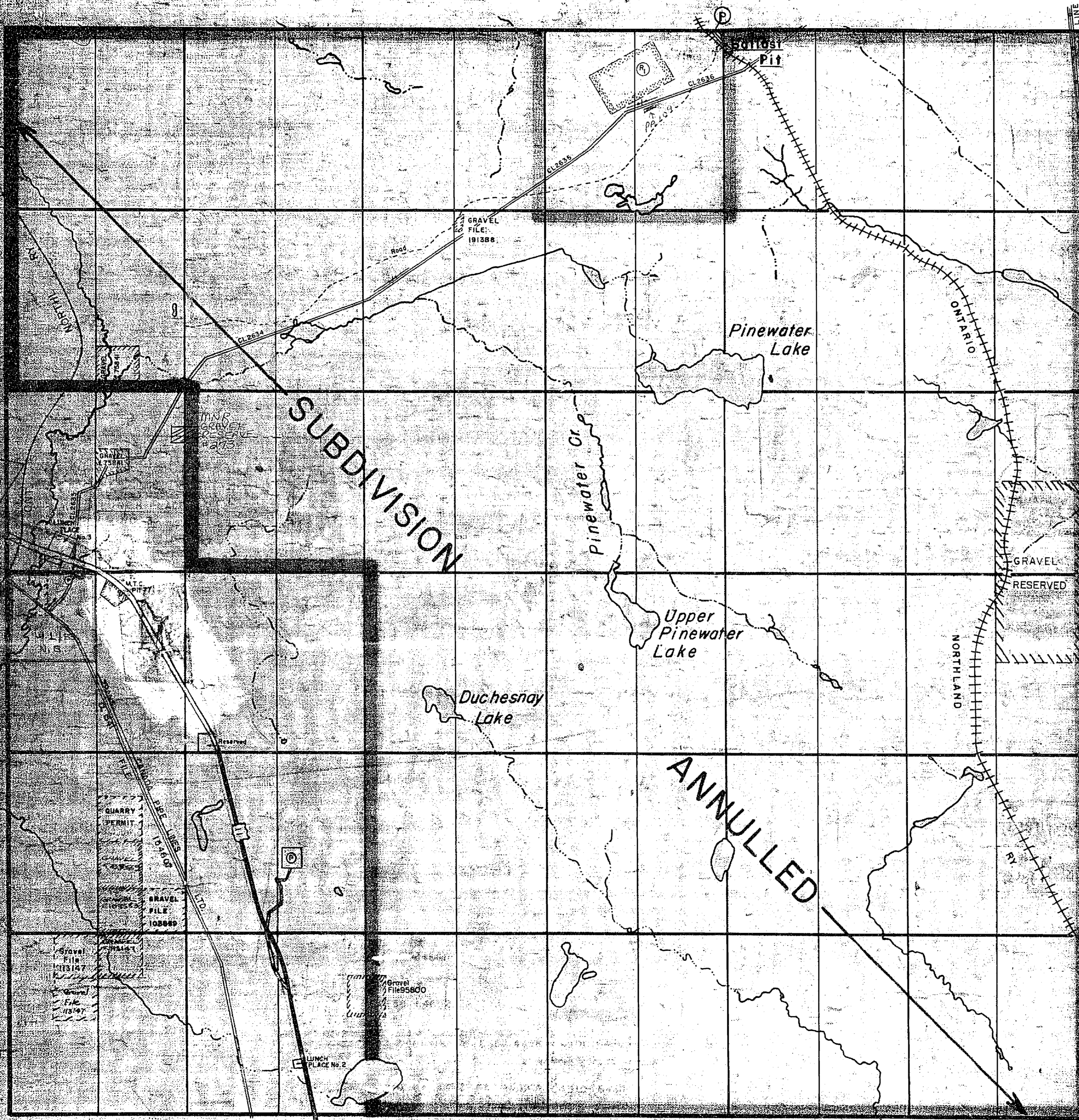


VI
V
IV
III
II
I

Widdifield Twp.

OFFICE USE ONLY

Stewart Twp.



Widdifield Twp.

THE TOWNSHIP OF
OF
MERRICK

DISTRICT OF
NIPISSING
SUBBURY
MINING DIVISION

SCALE: 1-INCH=40 CHAINS

LEGEND

PATENTED LAND	Ⓟ
CROWN LAND SALE	C.S.
LEASES	Ⓞ
LOCATED LAND	Loc
LICENSE OF OCCUPATION	L.O.
MINING RIGHTS ONLY	M.R.O.
SURFACE RIGHTS ONLY	S.R.O.
ROADS	—
IMPROVED ROADS	—
KING'S HIGHWAYS	—
RAILWAYS	—
POWER LINES	—
MARSH OR MUSKEG	—
MINES	—
CANCELLED	—

NOTES

GRANT OF EASEMENT 198 - TRANS CANADA PIPELINES LTD.
MINK GRAVEL RESERVE #273 (SEE LAND ROLL)
400' Surface Rights Reservation around all Lakes and Rivers.
* Order No. W.1/83 (North Bay) See Merrick Twp. Land Roll

Ⓟ W.1/81 NB.1
DATE OF ISSUE
1982 JUL 27 1982
Ministry of Natural Resources
TORONTO

MERRICK
PLAN NO. M-862

* *As of*

Stewart Twp.

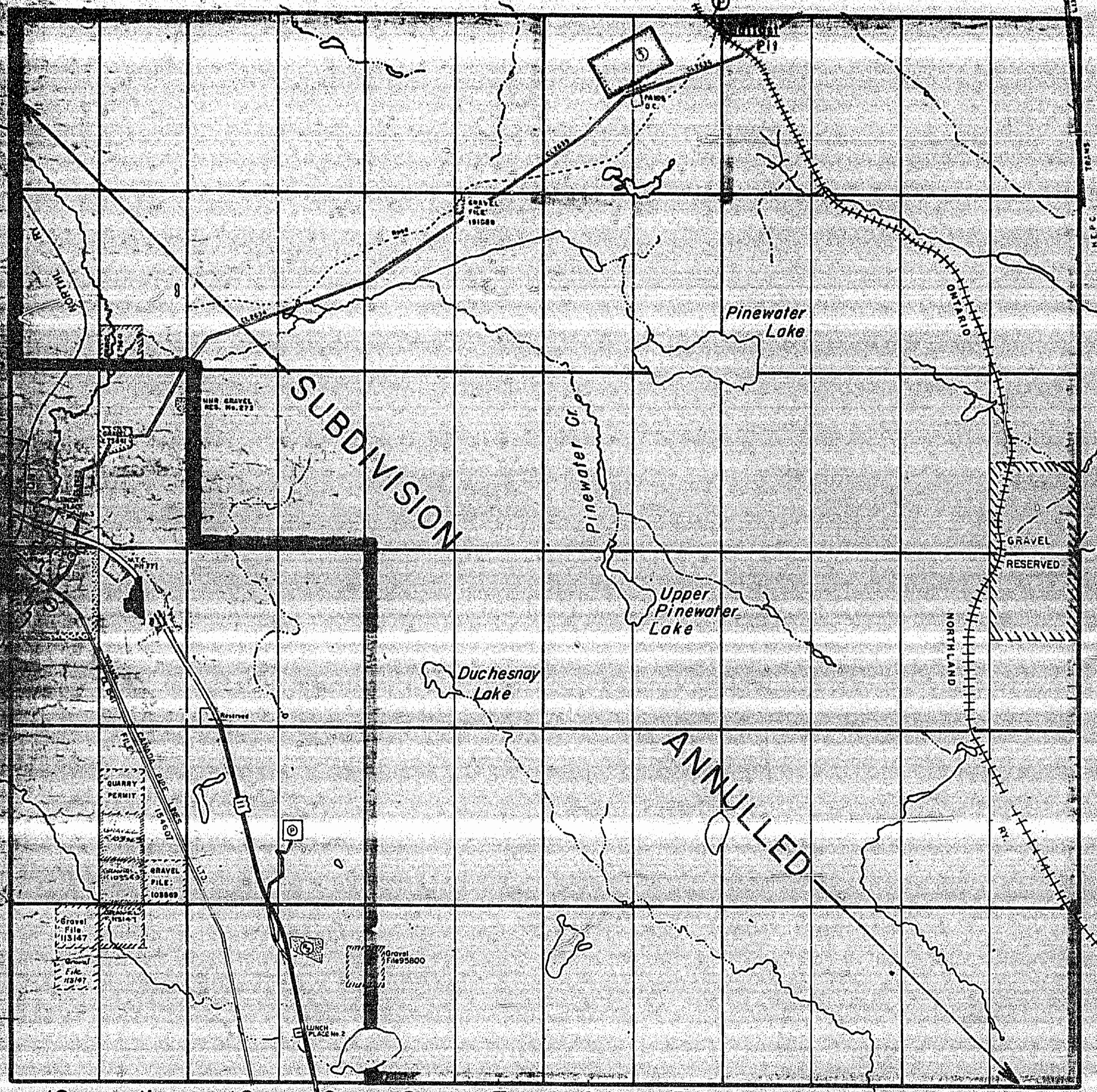
THE TOWNSHIP OF

MERRICK

DISTRICT OF
NIPISSING

SUDBURY
MINING DIVISION

SCALE: 1-INCH=40 CHAINS



VI

V

IV

III

II

I

Mullock Twp.

LEGEND

PATENTED LAND	Ⓟ
CROWN LAND SALE	C.S.
LEASES	Ⓞ
LOCATED LAND	Loc.
LICENSE OF OCCUPATION	L.O.
MINING RIGHTS ONLY	M.R.O.
SURFACE RIGHTS ONLY	S.R.O.
ROADS	—
IMPROVED ROADS	—
KING'S HIGHWAYS	—
RAILWAYS	—
POWER LINES	—
MARSH OR MUSKEG	—
MINES	—
CANCELLED	—

NOTES

* IN SERVICE (984080) - U

AREAS WITHDRAWN FROM DISPOSITION

S.R. - SURFACE RIGHTS		M.R. - MINING RIGHTS		
Description	Order No.	Date	Disposition	File
① W/1/81 NB	188530	4/2/81		S.R.O.
② MNR GRAVEL RESERVE 4C-13				
③ SEC. 31/80	W/1/83	2/8/83		S.R.O. M.R.

MERRICK

PLAN NO - M-862

ONTARIO
MINISTRY OF NATURAL RESOURCES
SURVEYS AND MAPPING BRANCH

Widdifield Twp.

MAP SYMBOLOLOGY

Table of map symbols including Aerial Cableway, Boundary, Contours, Control Points, Culvert, Falls, Flooded Land, Lock, Marsh or Swamp, Mine Head Frame, Outcrop, Pipeline, Railroad, Road, River, Stream, Canal, Rapids, Reservoir, River, Stream, Canal, Spot Elevation, Tower, Transmission Line, Utility Poles, Wharf, Dock, Pier, Wooded Area.

AREAS WITHDRAWN FROM DISPOSITION

- M.R.O. - MINING RIGHTS ONLY
S.R.O. - SURFACE RIGHTS ONLY
M.+S. - MINING AND SURFACE RIGHTS

Table with columns: Description, Order No., Date, Disposition, File. Lists various land parcels and their statuses.

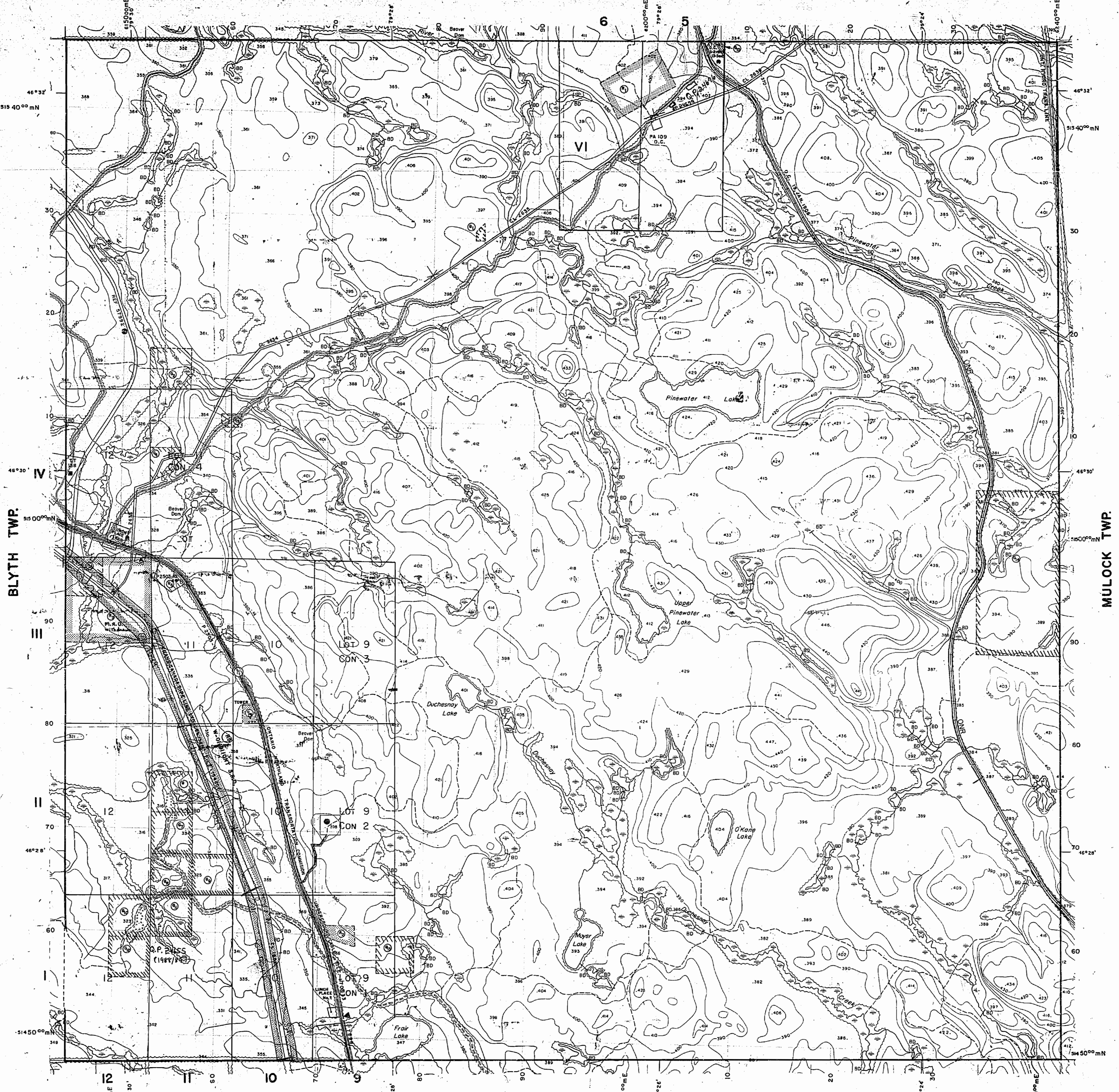
SAND AND GRAVEL

Table listing sand and gravel pits with columns for location, order number, date, and file number.

NOTE

THE SUBDIVISION OF THE TOWNSHIP OF MERRICK AS LAID OUT INTO LOTS AND CONCESSIONS AND SHOWN ON A PLAN OF SURVEY DATED NOVEMBER 6, 1884...

STEWART TWP.



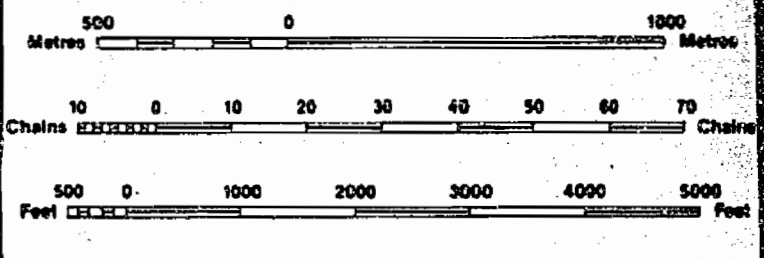
LEGEND

Legend table defining symbols for Highway and Route No., Other Roads, Trails, Surveyed Lines, Unsurveyed Lines, Railway and Right of Way, Utility Lines, Non-perennial Stream, Flooding or Flooding Rights, Subdivision or Composite Plan, Reservations, Original Shoreline, Marsh or Shrub, Mines, and Traverse Monument.

DISPOSITION OF CROWN LANDS

Table defining symbols for various types of documents: Patent, Surface & Mining Rights, Lease, Licence of Occupation, Order-in-Council, Reservation, Cancelled, Sand & Gravel.

NOTE: MINING RIGHTS IN PARCELS PATENTED PRIOR TO MAY 6, 1913, VESTED IN ORIGINAL PATENTEES BY THE PUBLIC LANDS ACT, R.S.O. 1970, CHAP. 296, SEC. 63, SUBSEC. 1.

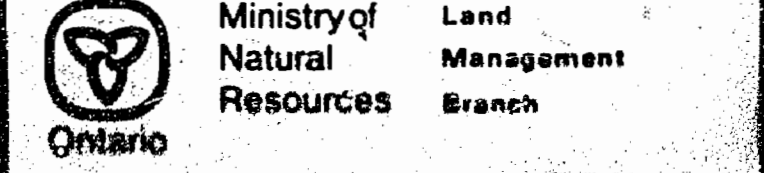


SCALE 1:20 000
GRID ZONE 17

THE INFORMATION THAT APPEARS ON THIS MAP HAS BEEN COMPILED FROM VARIOUS SOURCES, AND ACCURACY IS NOT GUARANTEED...

MAR 1 1984

TOWNSHIP
MERRICK
M.N.R. ADMINISTRATIVE DISTRICT
NORTH BAY
MINING DIVISION
SUDBURY
LAND TITLES / REGISTRY DIVISION
NIPISSING



Original: [blank]
Competition: JUNE 1988
Revised: [blank]
G-284

Q.P. 3-3 T. THOMPSON
AUG. 20/52

Stewart Twp.

CARDS

THE TOWNSHIP OF #1
OF

MERRICK

DISTRICT OF
NIPISSING
SUDBURY
MINING DIVISION

SCALE: 1-INCH=40 CHAINS

LEGEND

- | | |
|-----------------------|--------|
| PATENTED LAND | Ⓟ |
| CROWN LAND SALE | C.S. |
| LEASES | Ⓞ |
| LOCATED LAND | Loc. |
| LICENSE OF OCCUPATION | L.O. |
| MINING RIGHTS ONLY | M.R.O. |
| SURFACE RIGHTS ONLY | S.R.O. |
| ROADS | — |
| IMPROVED ROADS | — |
| KING'S HIGHWAYS | — |
| RAILWAYS | — |
| POWER LINES | — |
| MARSH OR MUSKEG | — |
| MINES | — |
| CANCELLED | C. |

NOTES



VI

V

IV

III

II

I

Mullock Twp.

Blyth Twp.

3
Z
AYS
AVEL
51

PIPELINE

Widdifield Twp.

PLAN NO.- M-862

DEPARTMENT OF MINES

— ONTARIO —

Stewart Twp.

SUBBURY
MINING DIV.
RECEIVED
JUN 24 1970
A.M. P.M.
7,8,9,10,11,12,1,2,3,4,5,6

THE TOWNSHIP OF

MERRICK

DISTRICT OF
NIPISSING

SUBBURY
MINING DIVISION

SCALE: 1-INCH=40 CHAINS

LEGEND

PATENTED LAND	Ⓟ
CROWN LAND SALE	C.S.
LEASES	Ⓛ
LOCATED LAND	Loc.
LICENSE OF OCCUPATION	LO.
MINING RIGHTS ONLY	M.R.O.
SURFACE RIGHTS ONLY	S.R.O.
ROADS	— — — — —
IMPROVED ROADS	— — — — —
KING'S HIGHWAYS	— — — — —
RAILWAYS	— — — — —
POWER LINES	— — — — —
MARSH OR MUSKEG	— — — — —
MINES	ⓧ
CANCELLED	C.

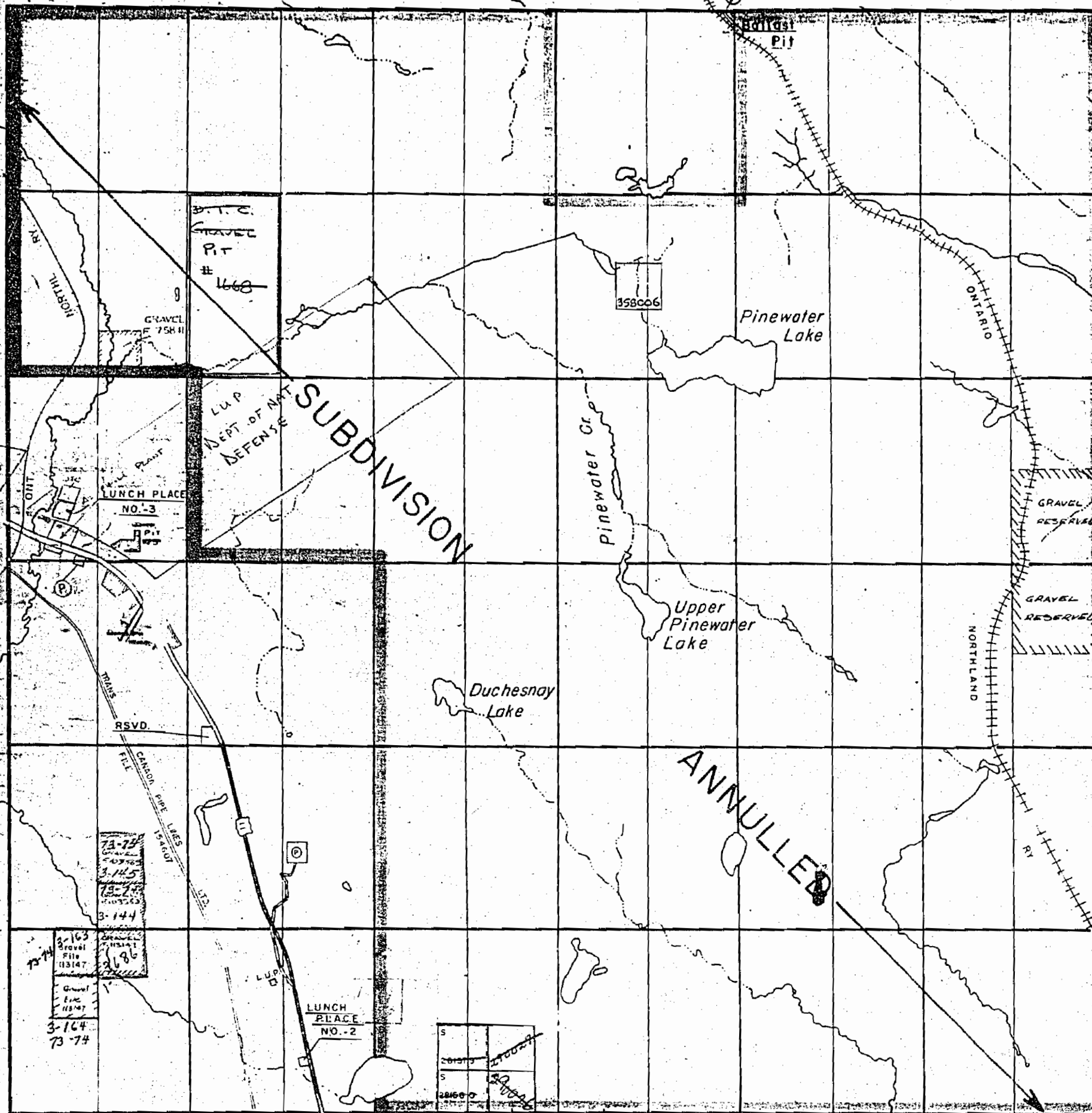
NOTES

400' Surface Rights Reservation, around
all Lakes and Rivers.

PLAN NO.- M-862

DEPARTMENT OF MINES

— ONTARIO —



VI *Al*

V

IV

III

II

I

Mullock Twp.

Blyth Twp.

12 11 10 9 8 7 6 5 4 3 2 1

Widdifield Twp.

Q.P. 3-3 T. THOMPSON
AUG. 30/52

Stewart Twp.

CARDS.

THE TOWNSHIP OF #1
OF

MERRICK

DISTRICT OF
NIPISSING
SUDBURY
MINING DIVISION

SCALE: 1-INCH=40 CHAINS

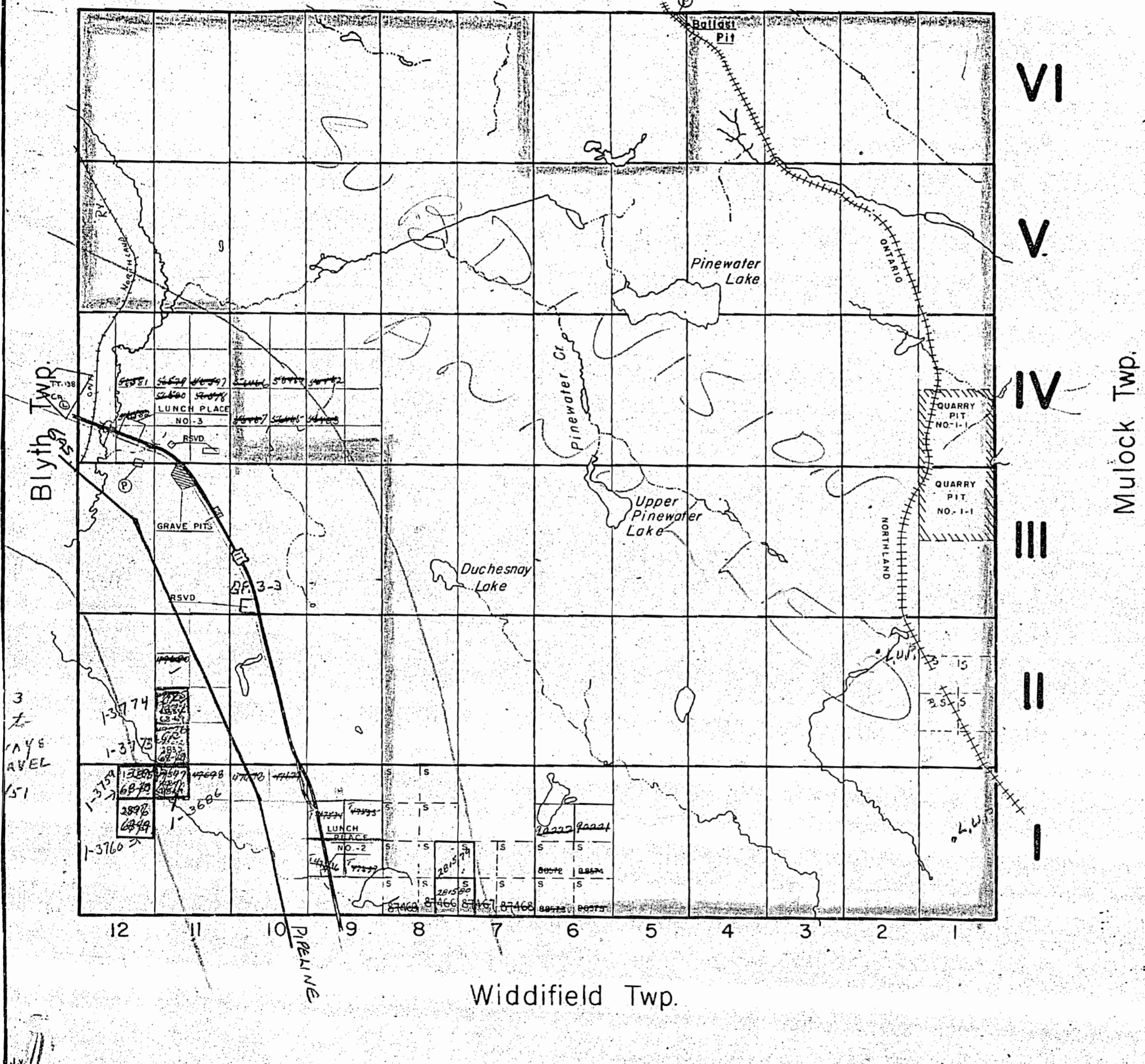
LEGEND

PATENTED LAND	⊕
CROWN LAND SALE	C.S.
LEASES	Ⓞ
LOCATED LAND	Loc.
LICENSE OF OCCUPATION	L.O.
MINING RIGHTS ONLY	M.R.O.
SURFACE RIGHTS ONLY	S.R.O.
ROADS	—
IMPROVED ROADS	—
KING'S HIGHWAYS	—
RAILWAYS	—
POWER LINES	—
MARSH OR MUSKEG	—
MINES	⊙
CANCELLED	C.

NOTES

PLAN NO.- M-862

DEPARTMENT OF MINES
— ONTARIO —



VI

V

IV

III

II

I

Mullock Twp.

3
t
AYE
AUEL
151



MERRICK



District of Nipissing

Scale: 40 chains to an inch

MERRICK
Twp. File

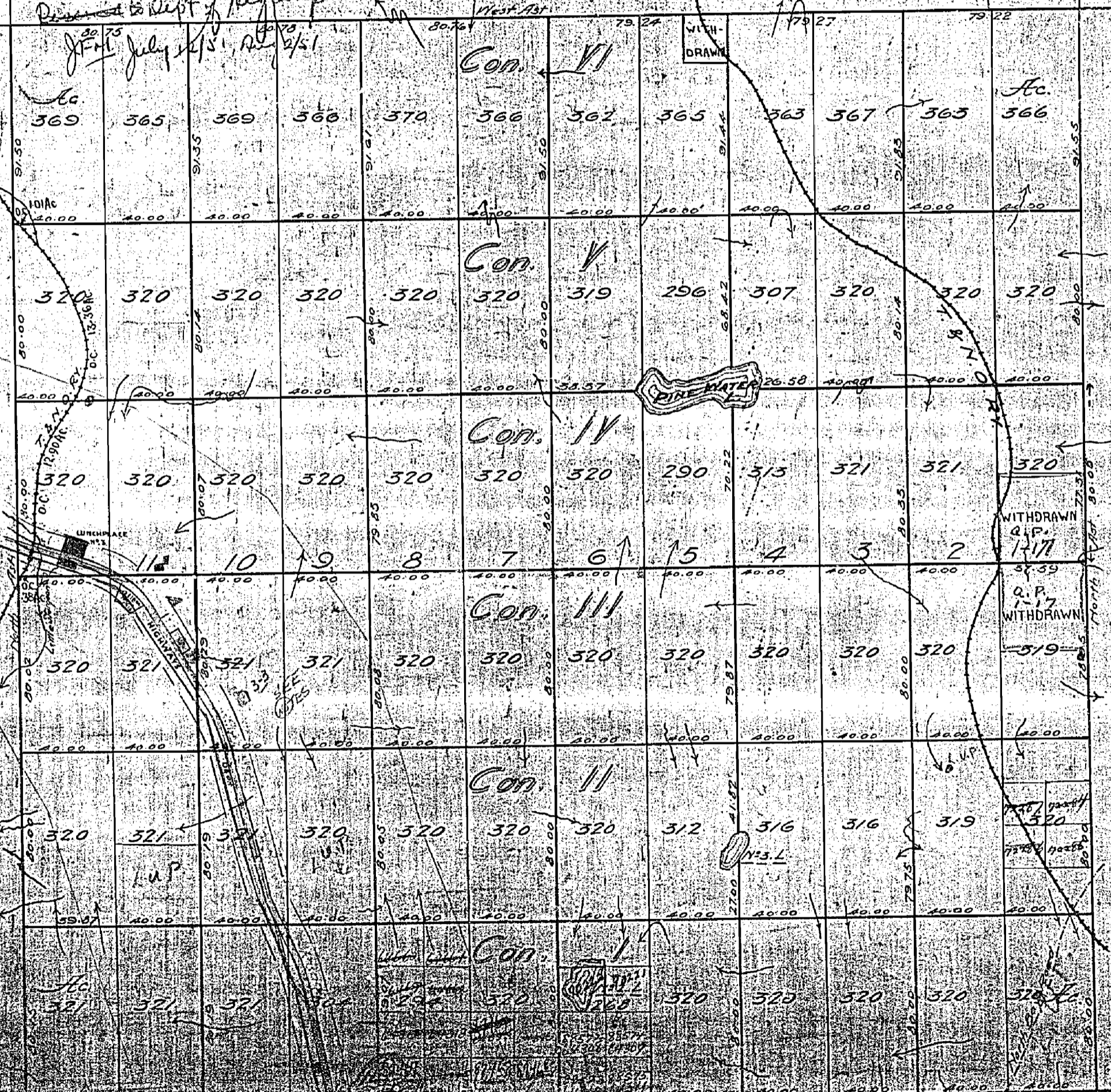
Lot 11 Con 3
482 acres

Perman. Reserve to Dept. of Highways to remain
J.F. 07 July 5/51

Merrick Twp.
file

Lot 11 Con 4 to
Perman. Reserve to Dept. of Highways

STEWARD



Proposed Natural
BLYTH

MULOCK

M862

WILSON FIELD

MERRICK

1897-10. Con 2 C.S. T. HER MAJESTY
 RECEIVED
 SEP 27 1944
 MINING DIVISION

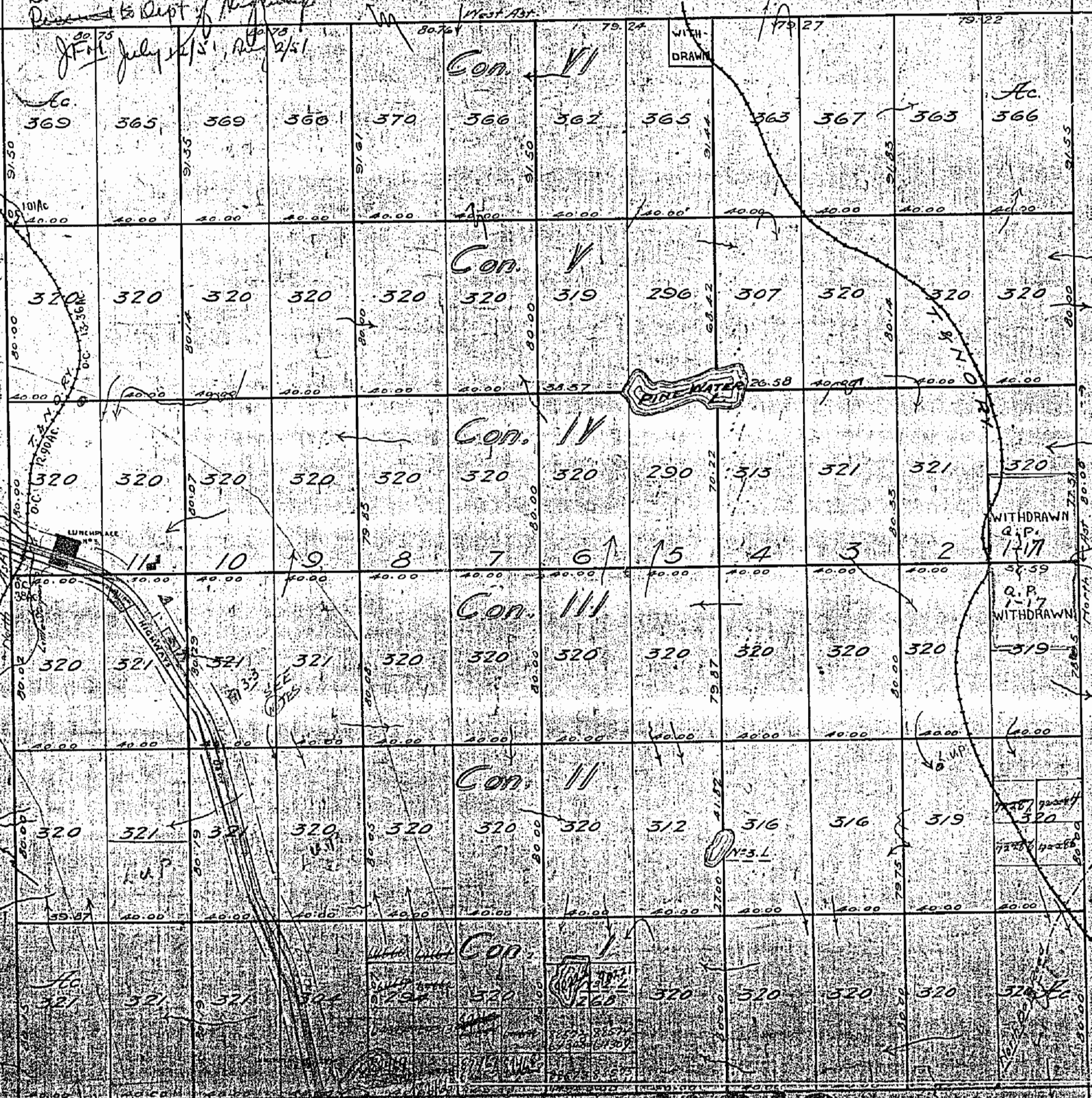
District of Nipissing

Scale: 40 chains to an inch

MERRICK
 Top File
 Let 11 Cons
 4.82 acres
 Permission Received Dept of Highways to remove
 gravel. J.F. 07 July 5/51
 Let 11 Cons 4 to
 Permission Received to Dept of Highways

C.P. 3-3
 T. THOMPSON
 ENG. 7/15

STEWARD



1/2 mile (right of way reserved) on
 west side of
 Proposed Natural
 BLYTH
 Mulock

M862

Copyright 1944 by the Registrar of Lands, Ontario
 This map is a reproduction of the original map of the same name
 deposited in the office of the Registrar of Lands, Ontario
 on the 15th day of July 1915 for the purpose of the
 Mining Act, 1915, and is published by the Registrar of Lands,
 Ontario, at the request of the Minister of Lands and Forests,
 Ontario.

Q.P. 3-3 T. THOMPSON
AUG. 29/52

Stewart Twp.

CARDS

THE TOWNSHIP OF #1
OF

MERRICK

DISTRICT OF
NIPISSING
SUDBURY
MINING DIVISION

SCALE: 1-INCH=40 CHAINS

LEGEND

PATENTED LAND	Ⓢ
CROWN LAND SALE	C.S.
LEASES	Ⓞ
LOCATED LAND	Loc.
LICENSE OF OCCUPATION	L.O.
MINING RIGHTS ONLY	M.R.O.
SURFACE RIGHTS ONLY	S.R.O.
ROADS	—
IMPROVED ROADS	—
KING'S HIGHWAYS	—
RAILWAYS	—
POWER LINES	—
MARSH OR MUSKEG	—
MINES	—
CANCELLED	C.

NOTES

PLAN NO. M-862

DEPARTMENT OF MINES

— ONTARIO —

VI

V

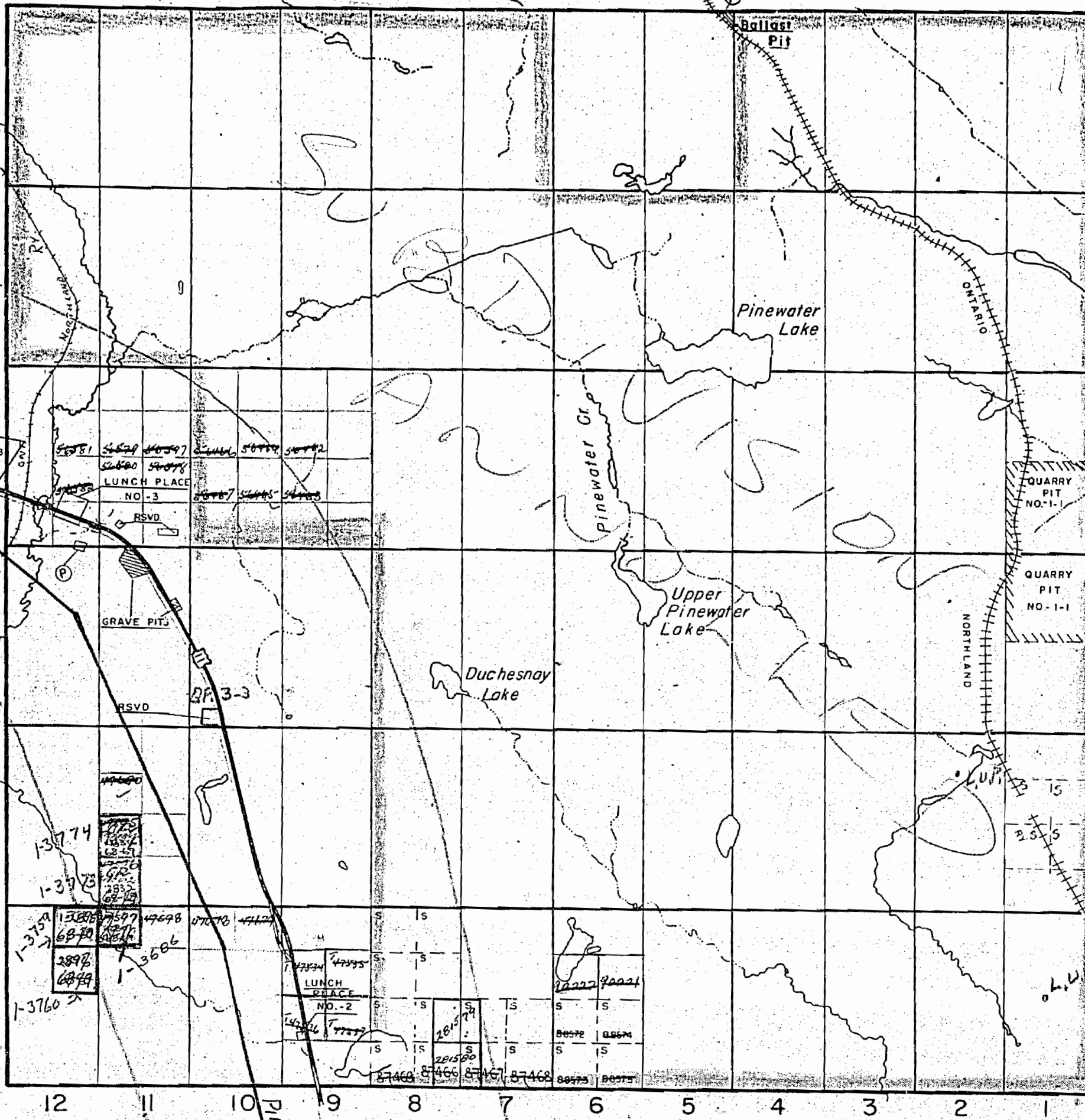
IV

III

II

I

Mulock Twp.



Blyth Twp.

3
L
AYE
AVENUE
151

Widdifield Twp.

J.W.



862

Stewart Twp.

SUDBURY
MINING DIV.
RECEIVED
JUN 24 1970
A.M. 7,8,9,10,11,12,1,2,3,4,5,6 P.M.

THE TOWNSHIP
OF

MERRICK

DISTRICT OF
NIPISSING

SUDBURY
MINING DIVISION

SCALE: 1-INCH=40 CHAINS

LEGEND

PATENTED LAND	Ⓟ
CROWN LAND SALE	C.S.
LEASES	Ⓛ
LOCATED LAND	L.O.
LICENSE OF OCCUPATION	M.R.O.
MINING RIGHTS ONLY	S.R.O.
SURFACE RIGHTS ONLY	
ROADS	—
IMPROVED ROADS	—
KING'S HIGHWAYS	—
RAILWAYS	—
POWER LINES	—
MARSH OR MUSKEG	—
MINES	Ⓧ
CANCELLED	C.

NOTES

400' Surface Rights Reservation around
all Lakes and Rivers.

PLAN NO.- M-862

DEPARTMENT OF MINES

— ONTARIO —

VI *Ol*

V

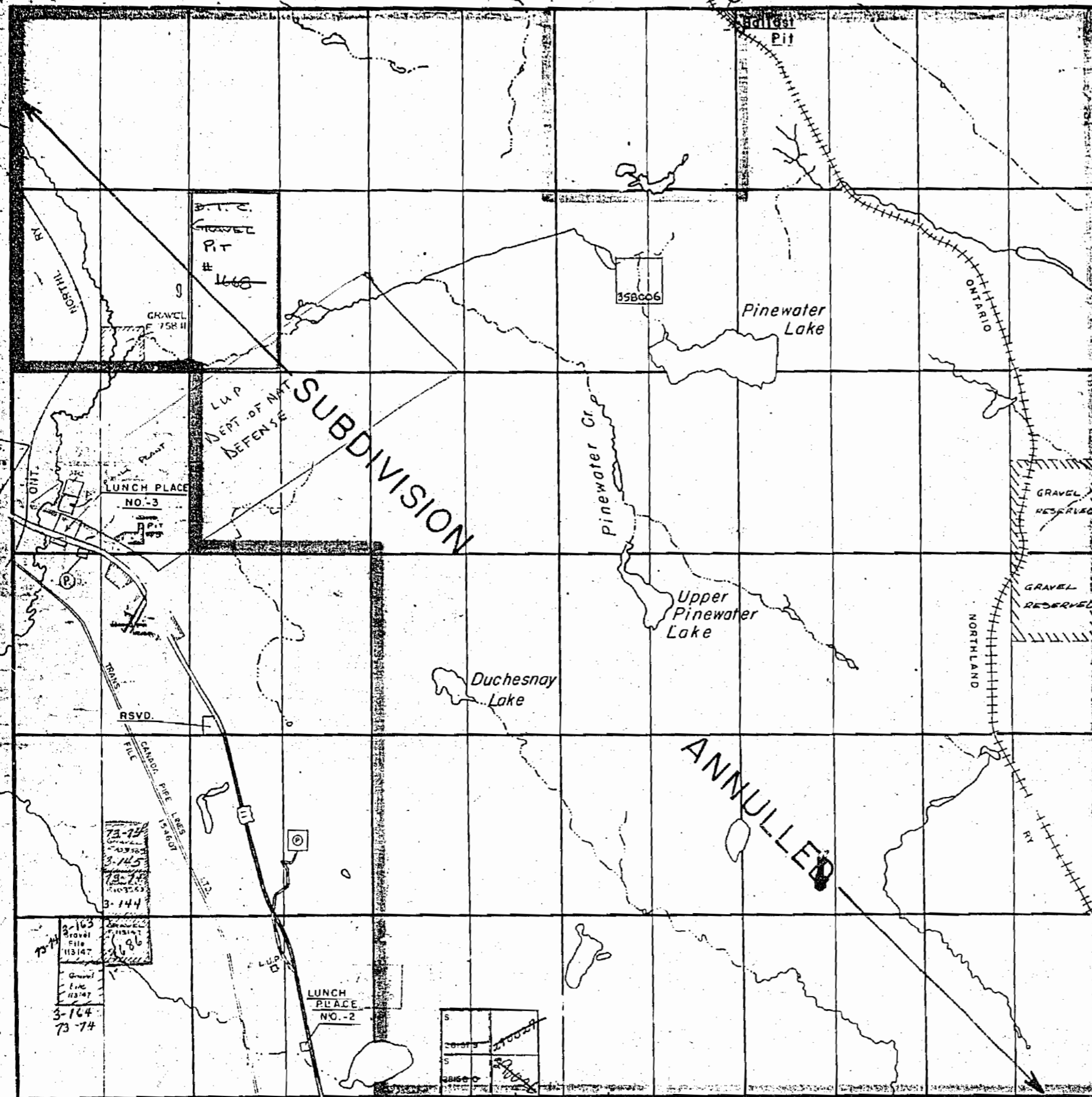
IV

III

II

I

Mulock Twp.



12 11 10 9 8 7 6 5 4 3 2 1

Widdifield Twp.

Stewart Twp.

THE TOWNSHIP OF
OF
MERRICK

DISTRICT OF
NIPISSING

SUDBURY
MINING DIVISION

SCALE: 1-INCH=40 CHAINS

LEGEND

PATENTED LAND	Ⓟ
CROWN LAND SALE	C.S.
LEASES	Ⓛ
LOCATED LAND	Loc.
LICENSE OF OCCUPATION	L.O.
MINING RIGHTS ONLY	M.R.O.
SURFACE RIGHTS ONLY	S.R.O.
ROADS	—
IMPROVED ROADS	—
KING'S HIGHWAYS	—
RAILWAYS	—
POWER LINES	—
MARSH OR MUSKEG	—
MINES	Ⓧ
CANCELLED	C.

NOTES

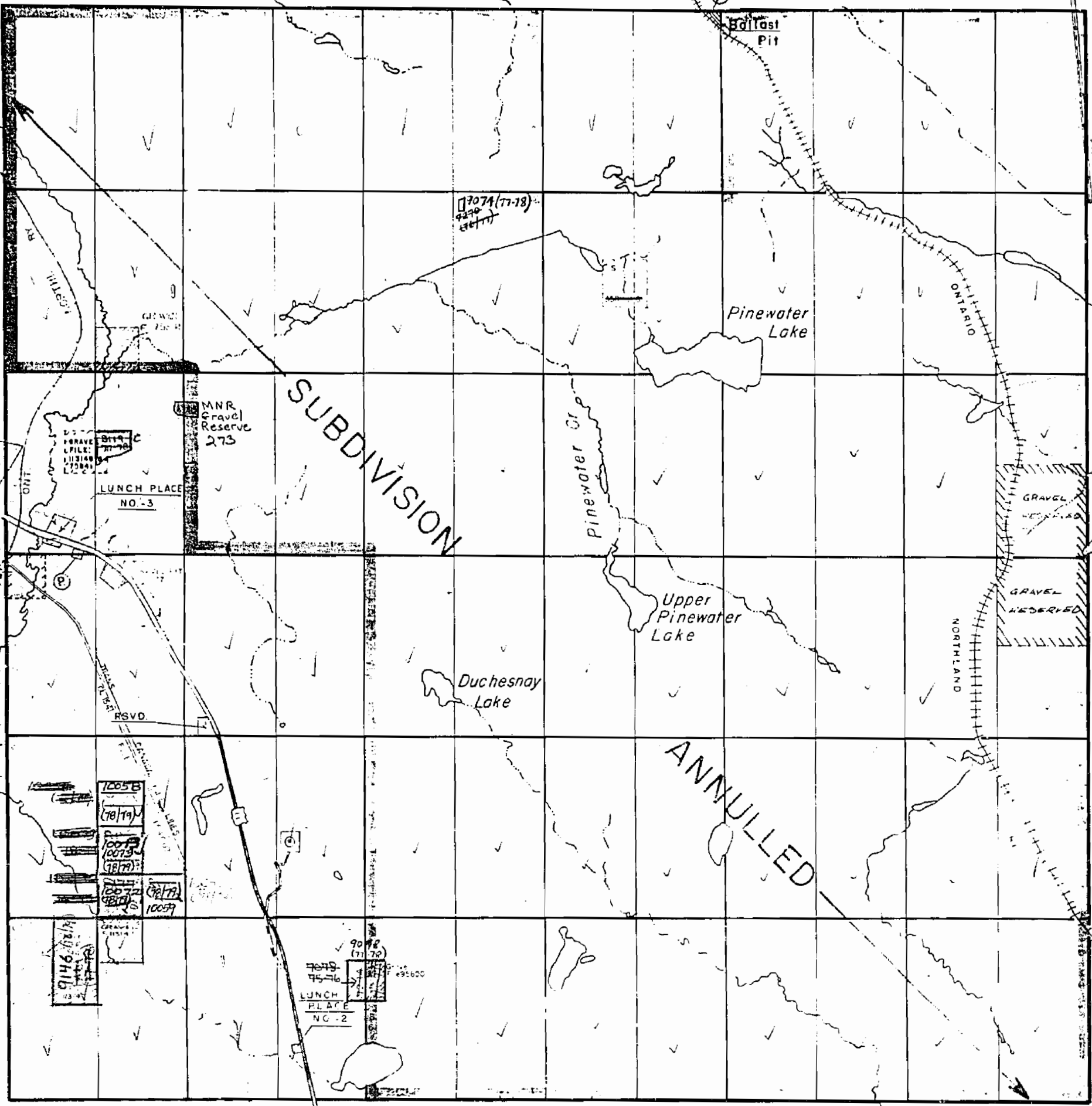
400' Surface Rights Reservation around
all Lakes and Rivers.

RECEIVED
NOV 1 1973
7,890,511,234,56

MERRICK

PLAN NO - M-862

MINISTRY OF NATURAL RESOURCES



VI

V

IV

III

II

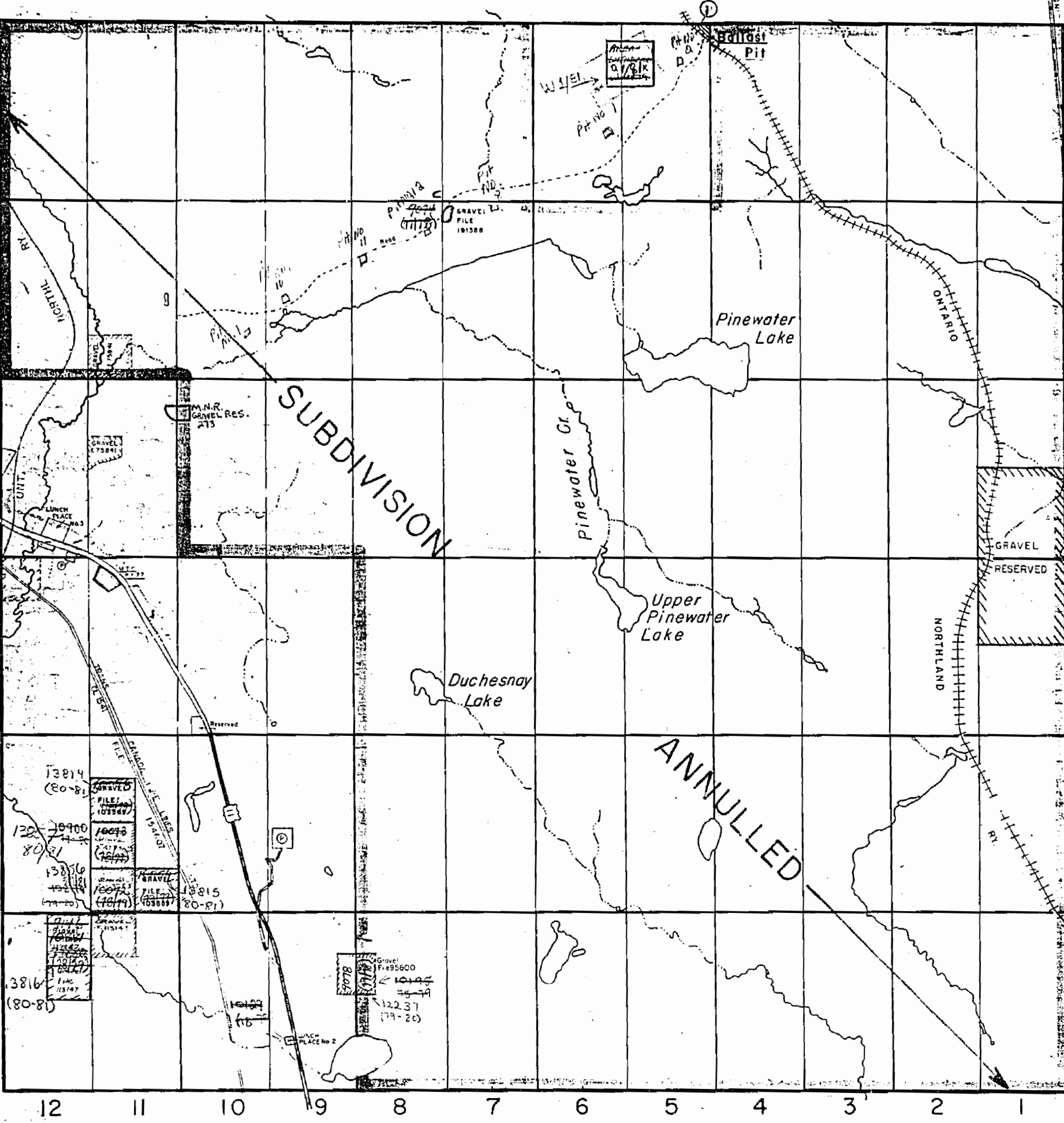
I

Mullock Twp.

Blyth Twp.

12 11 10 9 8 7 6 5 4 3 2 1

Widdifield Twp.



THE TOWNSHIP OF
OF
MERRICK

DISTRICT OF NIPISSING
SUDBURY MINING DIVISION
SCALE: 1-INCH=40 CHAINS

LEGEND

PATENTED LAND	Ⓟ
CROWN LAND SALE	C.S.
LEASES	Ⓛ
LOCATED LAND	Loc.
LICENSE OF OCCUPATION	L.O.
MINING RIGHTS ONLY	M.R.O.
SURFACE RIGHTS ONLY	S.R.O.
ROADS	—
IMPROVED ROADS	—
KING'S HIGHWAYS	—
RAILWAYS	—
POWER LINES	—
MARSH OR MUSKEG	—
MINES	Ⓧ
CANCELLED	C.

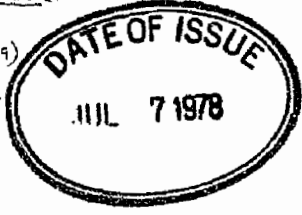
NOTES

* O.L./E.I. Reopen Pt of Centre Lots 5 & 6 Con VI (16 ha)
** W.L./S.I. Withdraws Part of Centre Lots 5 & 6 Con VI (29 ha)

400' Surface Rights Reservation around all Lakes and Rivers.

*** Grant of Easement No. 98 (TransCanada Pipelines Limited)
Location C.L. 2633 (Plan 36R-5706)
Location C.L. 2634 (Plan 36R-5707)
Location C.L. 2635 (Plan 36R-5708)

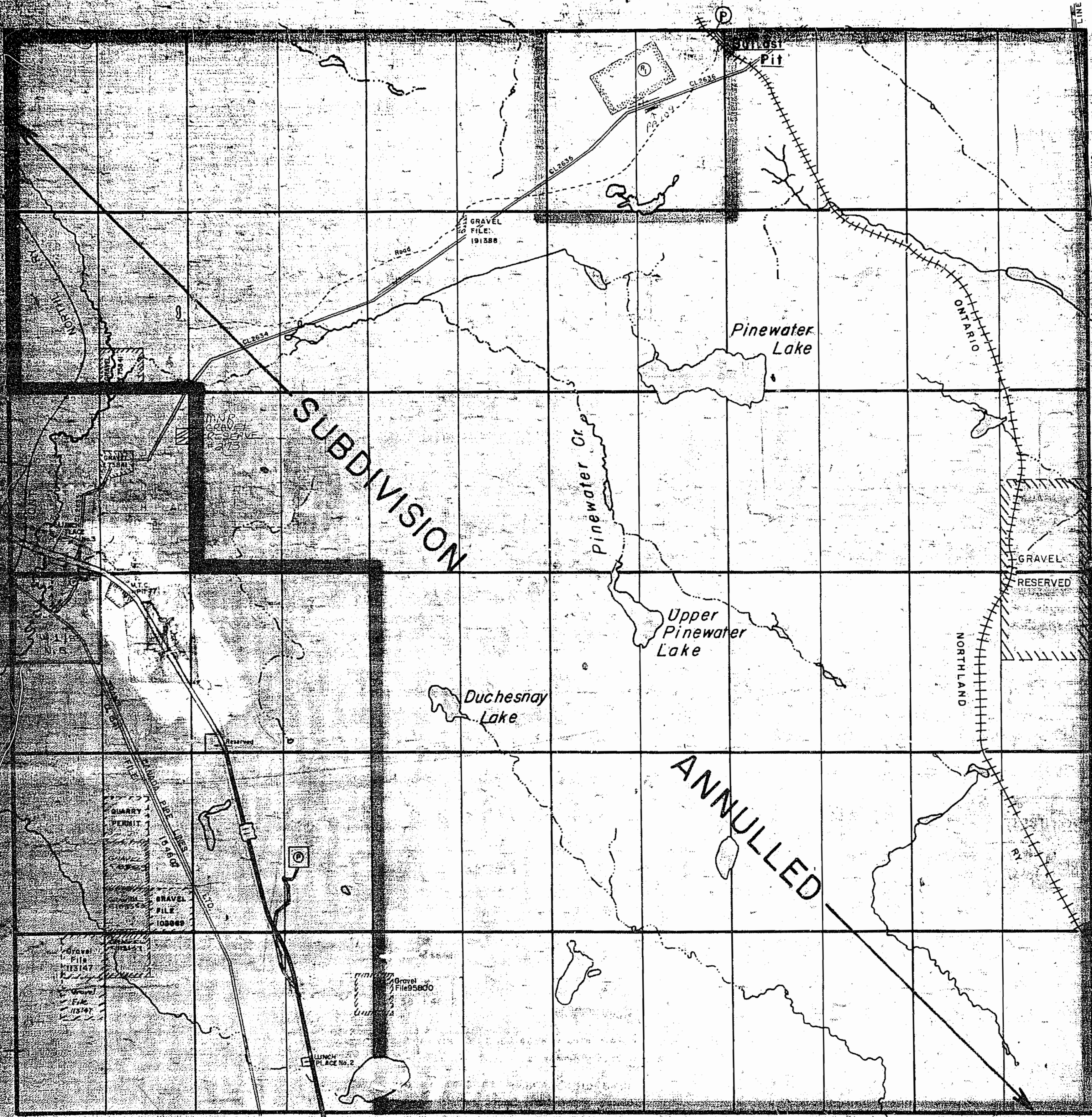
Location C.L. 2636 (Plan 36R-5709)
See Land Roll File



MERRICK
PLAN NO.- M-862

OFFICE USE ONLY

Stewart Twp



Widdifield Twp.

THE TOWNSHIP
OF
MERRICK

DISTRICT OF
NIPISSING
SUDBURY
MINING DIVISION

SCALE: 1-INCH=40 CHAINS

LEGEND

PATENTED LAND	Ⓟ
CROWN LAND SALE	C.S.
LEASES	Ⓛ
LOCATED LAND	Loc.
LICENSE OF OCCUPATION	L.O.
MINING RIGHTS ONLY	M.R.O.
SURFACE RIGHTS ONLY	S.R.O.
ROADS	—
IMPROVED ROADS	—
KING'S HIGHWAYS	—
RAILWAYS	—
POWER LINES	—
MARSH OR MUSKEG	—
MINES	—
CANCELLED	—

NOTES

GRANT OF EASEMENT 1998 - TRANS CANADA PIPELINES LTD.
MINK GRAVEL RESERVE #273 (SEE LAND ROLL)
400' Surface Rights Reservation around all Lakes and Rivers
* Order No. W.L./83 (North Bay) See Merrick Twp. Roll

Ⓟ W.L./81 NB. 1000000 S.R.O.

DATE OF ISSUE
JUL 27 1982
Ministry of Natural Resources
TORONTO

MERRICK
PLAN NO. M-862

ONTARIO
MINISTRY OF NATURAL RESOURCES
SURVEYS AND MAPPING BRANCH

* Aug 84

Stewart Twp.

THE TOWNSHIP OF

MERRICK

DISTRICT OF
NIPISSING

SUDBURY
MINING DIVISION

SCALE: 1-INCH=40 CHAINS

LEGEND

PATENTED LAND	Ⓟ
CROWN LAND SALE	C.S.
LEASES	Ⓞ
LOCATED LAND	Loc.
LICENSE OF OCCUPATION	L.O.
MINING RIGHTS ONLY	M.R.O.
SURFACE RIGHTS ONLY	S.R.O.
ROADS	—
IMPROVED ROADS	—
KING'S HIGHWAYS	—
RAILWAYS	—
POWER LINES	—
MARSH OR MUSKEG	* *
MINES	X
CANCELLED	C.

NOTES

* IN SERVICE 19840801 - 00

AREAS WITHDRAWN FROM DISPOSITION

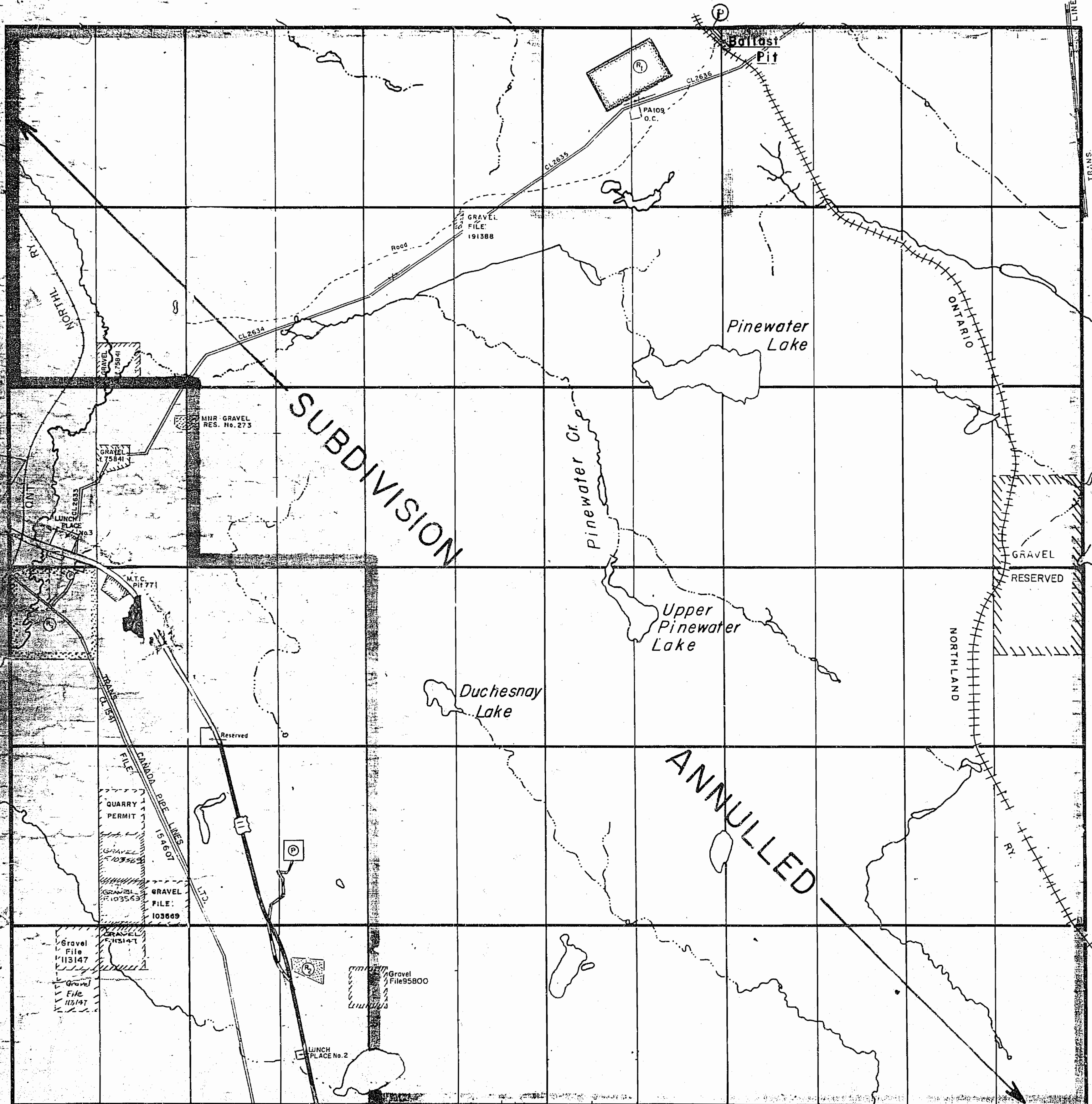
S.R. — SURFACE RIGHTS M.R. — MINING RIGHTS

Description	Order No.	Date	Disposition	File
① W.1/81 NB	188530	4/2/81		S.R.O.
② MNR GRAVEL RESERVE 4C-13				
③ SEC. 36/80	W1/83	2/8/83		S.R.B.M.R.

MERRICK

PLAN NO - M-862

ONTARIO
MINISTRY OF NATURAL RESOURCES
SURVEYS AND MAPPING BRANCH



VI

V

IV

III

II

I

Mullock Twp.

SUBDIVISION

ANNULLED

12 11 10 9 8 7 6 5 4 3 2 1

Widdifield Twp.

MAP SYMBOLOLOGY

Aerial Cableway	Pipeline (above ground)
Boundary	Railroad
Intermittent	Single Track
Intermittent	Double Track
District, Township	Abandoned
Indian Reserve	Turbine
Assessment	Road
Lot, Concession	Highway, County
Assessment	Township
Park Boundary	Access (road at daylight)
Boundary	Access (road at night)
Road, Railroad	Trail, Bush Road (portage, atty)
Building	Rapids
Chimney	Double line river with multiple rapids
Cliff, Pit, Pile	Double line river with multiple rapids
Contours	Reservoir
Intermittent	River, Stream, Canal
Assessment	Approximate
Depression	Approximate
Control Points	Approximate
Horizontal	Direction of flow
Vertical	Lock
0 01774001	Culvert
0 300.02	Falls
0 300.02	Double line river
0 300.02	Fence, Hedge, Wall
0 300.02	Feature Outline (contour lines, etc.)
0 300.02	Flooded Land
0 300.02	Lock
0 300.02	Marsh or Swamp
0 300.02	Moat
0 300.02	Mine Head Frame
0 300.02	Outcrop
0 300.02	Spot Elevation (feet above sea level)
0 300.02	Tower
0 300.02	Transmission Line
0 300.02	Pit
0 300.02	Pit
0 300.02	Tunnel
0 300.02	Utility Poles
0 300.02	Wharf, Dock, Pier
0 300.02	Wooded Area

AREAS WITHDRAWN FROM DISPOSITION

M.R.O. - MINING RIGHTS ONLY
 S.R.O. - SURFACE RIGHTS ONLY
 M+S. - MINING AND SURFACE RIGHTS

Description	Order No.	Date	Disposition	File
W-1/81 NB	188530	1/2/81	S.R.O.	
MNR GRAVEL RESERVE	4C-13			
SEC. 56/80	W-1/83	2/8/83	M.R.	
D.P.P. RADIO STATION	24/11/82		S.R.	95801
W-01810NT S.R.O.	SEP.20/91		L.R. FILE	

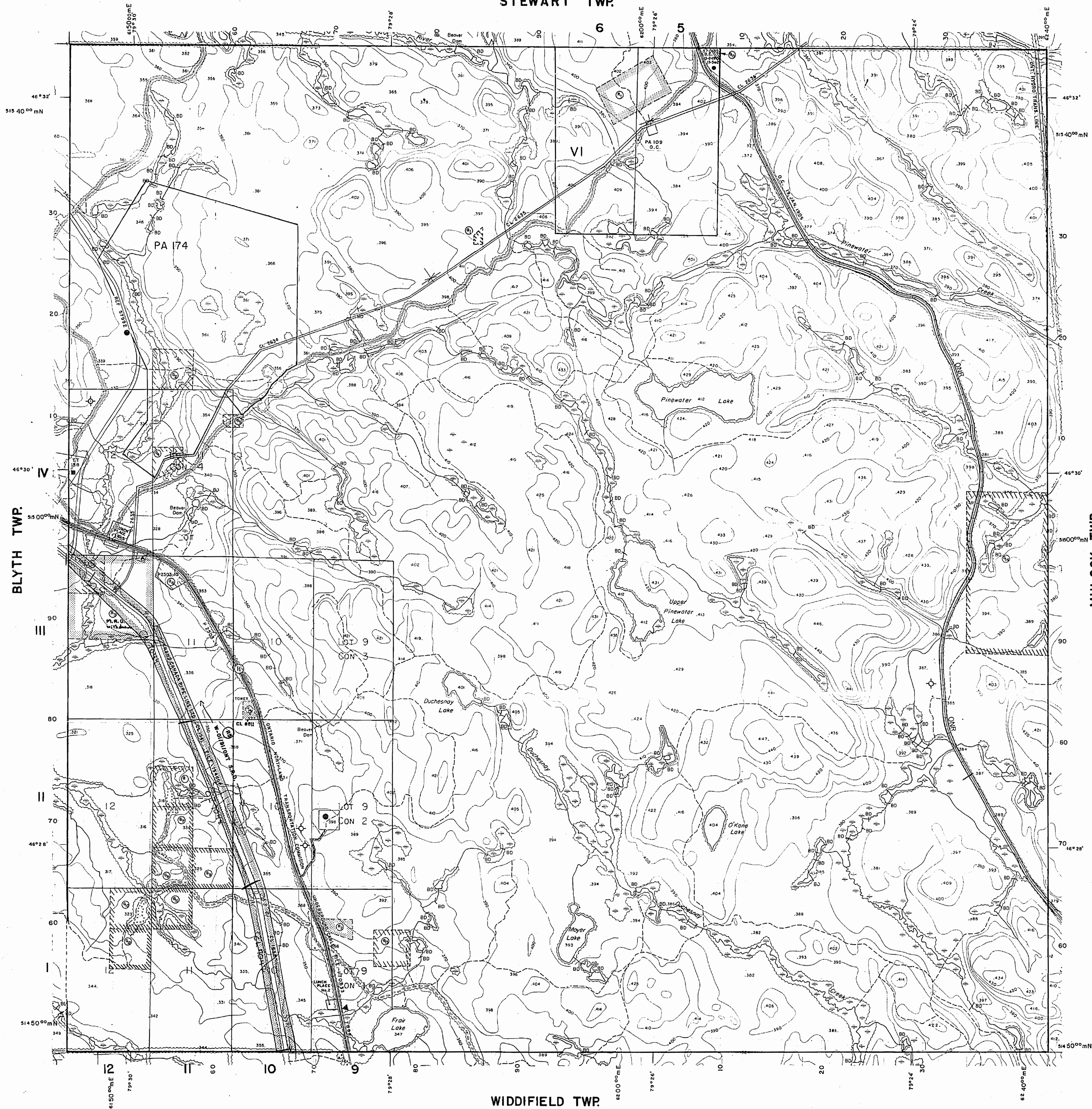
SAND AND GRAVEL

GRAVEL PIT	191388
GRAVEL PIT	75841
M.N.R. GRAVEL RES. N°273	
GRAVEL PIT	73541
GRAVEL PIT	123119
M.T.C. PIT 77	
QUARRY PERMIT	
GRAVEL PIT	103569
GRAVEL PIT	103569
GRAVEL PIT	103569
GRAVEL PIT	113147
GRAVEL PIT	113147
GRAVEL PIT	113147
GRAVEL PIT	95800
GRAVEL RESERVED	
BALLAST PIT	

NOTE

THE SUBDIVISION OF THE TOWNSHIP OF MERRICK AS LAID OUT INTO LOTS AND CONCESSIONS AND SHOWN ON A PLAN OF SURVEY DATED NOVEMBER 6, 1884, BY G RAINBOTH P.L.S. WITH THE EXCEPTION OF LOTS 9 TO 12 IN CONS. I TO 3, LOTS II AND 12 IN CONS. IV, AND LOTS 5 AND 6 IN CONS. VI INCLUSIVE WAS ANNULLED AUG. 6, 1964, UNDER AUTHORITY OF SUBSECTION 1 OF SECTION 11 OF THE PUBLIC LANDS ACT AND IS SUPERSEDED BY THIS AMENDED PLAN.

STEWART TWP.



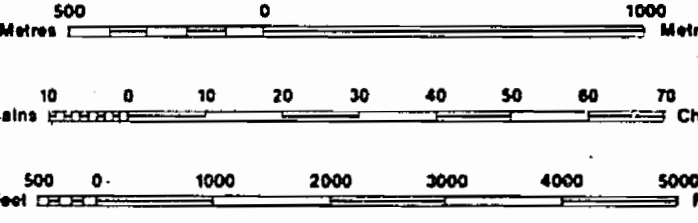
LEGEND

HIGHWAY AND ROUTE No.	
OTHER ROADS	
TRAILS	
SURVEYED LINES:	
TOWNSHIPS, BASE LINES, ETC.	
LOTS, MINING CLAIMS, PARCELS, ETC.	
UNSURVEYED LINES:	
LOT LINES	
PARCEL BOUNDARY	
MINING CLAIMS ETC.	
RAILWAY AND RIGHT OF WAY	
UTILITY LINES	
NON-PERENNIAL STREAM	
FLOODING OR FLOODING RIGHTS	
SUBDIVISION OR COMPOSITE PLAN	
RESERVATIONS	
ORIGINAL SHORELINE	
MARSH OR MUSKEG	
MINES	
TRAVERSE MONUMENT	

DISPOSITION OF CROWN LANDS

TYPE OF DOCUMENT	SYMBOL
PATENT, SURFACE & MINING RIGHTS	●
" SURFACE RIGHTS ONLY	○
" MINING RIGHTS ONLY	◐
LEASE, SURFACE & MINING RIGHTS	■
" SURFACE RIGHTS ONLY	□
" MINING RIGHTS ONLY	◑
LICENCE OF OCCUPATION	▽
ORDER-IN-COUNCIL	OC
RESERVATION	○
CANCELLED	○
SAND & GRAVEL	○
LAND USE PERMIT	○

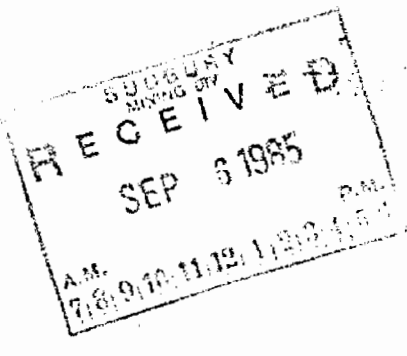
NOTE: MINING RIGHTS IN PARCELS PATENTED PRIOR TO MAY 6, 1912, VESTED IN ORIGINAL PATENTEES BY THE PUBLIC LANDS ACT, R.S.O. 1910, CHAP. 380, SEC. 63, SUBSEC. 1.



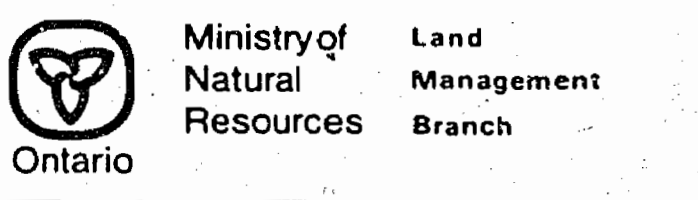
SCALE 1:20 000

GRID ZONE : 17

THE INFORMATION THAT APPEARS ON THIS MAP HAS BEEN COMPILED FROM VARIOUS SOURCES, AND ACCURACY IS NOT GUARANTEED. THOSE WISHING TO STAKE MINING CLAIMS SHOULD CONSULT WITH THE MINING RECORDER, MINISTRY OF NORTHERN DEVELOPMENT AND MINES, FOR ADDITIONAL INFORMATION ON THE STATUS OF THE LANDS SHOWN HEREON.



TOWNSHIP
MERRICK
 M.N.R. ADMINISTRATIVE DISTRICT
 NORTH BAY
 MINING DIVISION
 SUDBURY
 LAND TITLES / REGISTRY DIVISION
 NIPISSING



Original
 Compilation: JUNE 1985
 Revisé:
 Number
G-2844

WIDDIFIELD TWP.