

THE TOWNSHIP OF  
OF  
**MORTIMER**

DISTRICT OF  
COCHRANE  
LARDER LAKE  
MINING DIVISION

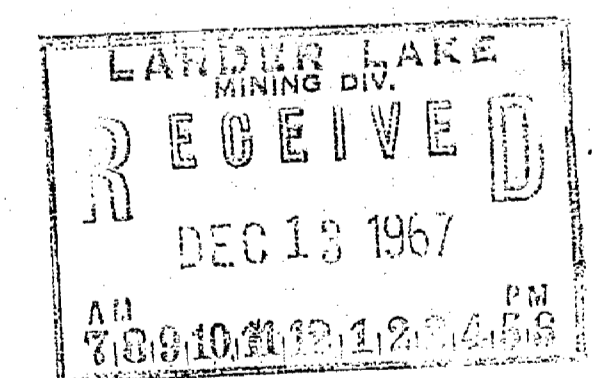
SCALE: 1-INCH=40 CHAINS

LEGEND

- |                       |      |
|-----------------------|------|
| PATENTED LAND         | Ⓟ    |
| CROWN LAND SALE       | C.S. |
| LEASES                | Ⓢ    |
| LOCATED LAND          | Loc. |
| LICENSE OF OCCUPATION | L.O. |
| ROADS                 | —    |
| IMPROVED ROADS        | —    |
| KING'S HIGHWAY        | —    |
| RAILWAYS              | —    |
| POWER LINES           | —    |
| MARSH OR MUSKEG       | —    |
| MINES                 | ⊗    |
| GEODETIC STATION      | △    |

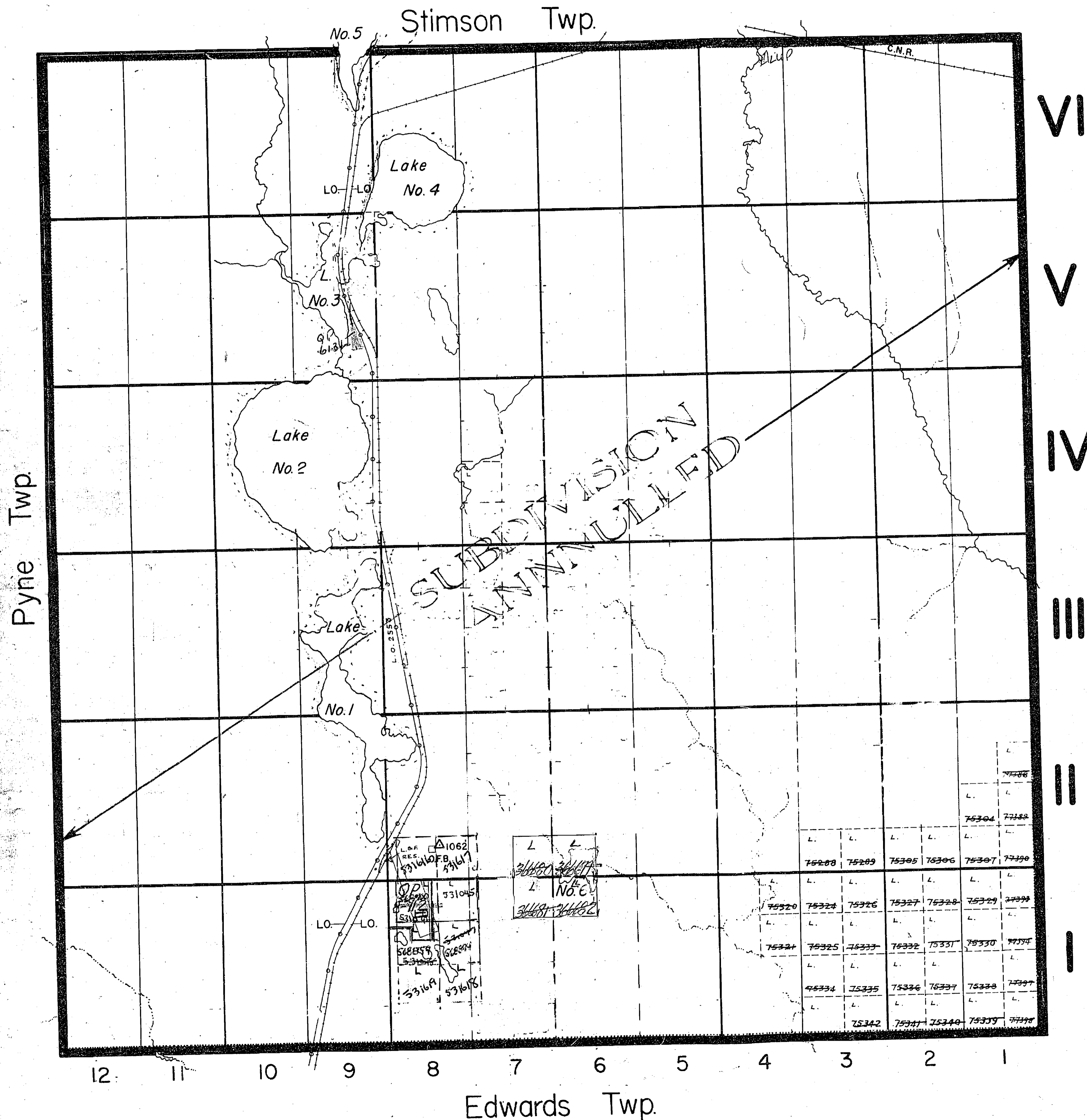
NOTES

- L.O.2553 to Abitibi Electric Development Co. Ltd.  
5 Feb. 1932, covers Power Line.
- L.O.5958 to Abitibi Power & Paper Co. Ltd.  
6 May. 1942, covers Railway & Gravel Pit.
- 400' Surface Rights Reservation around  
all Lakes and Rivers.



PLAN NO. - M. 553

DEPARTMENT OF MINES  
—ONTARIO— #33



*Railroad by High  
June 16/88*

THE TOWNSHIP OF  
OF  
**MORTIMER**

DISTRICT OF  
COCHRANE

LARDER LAKE  
MINING DIVISION

SCALE: 1-INCH=40 CHAINS

LEGEND

PATENTED LAND	⊙
CROWN LAND SALE	C.S.
LEASES	L
LOCATED LAND	Loc
LIGENSE OF OCCUPATION	L.O.
ROADS	—
IMPROVED ROADS	—
KING'S HIGHWAY	—
RAILWAYS	—
POWER LINES	—
MARSH OR MUSKEG	—
MINES	X
GEODETIC STATION	△

NOTES

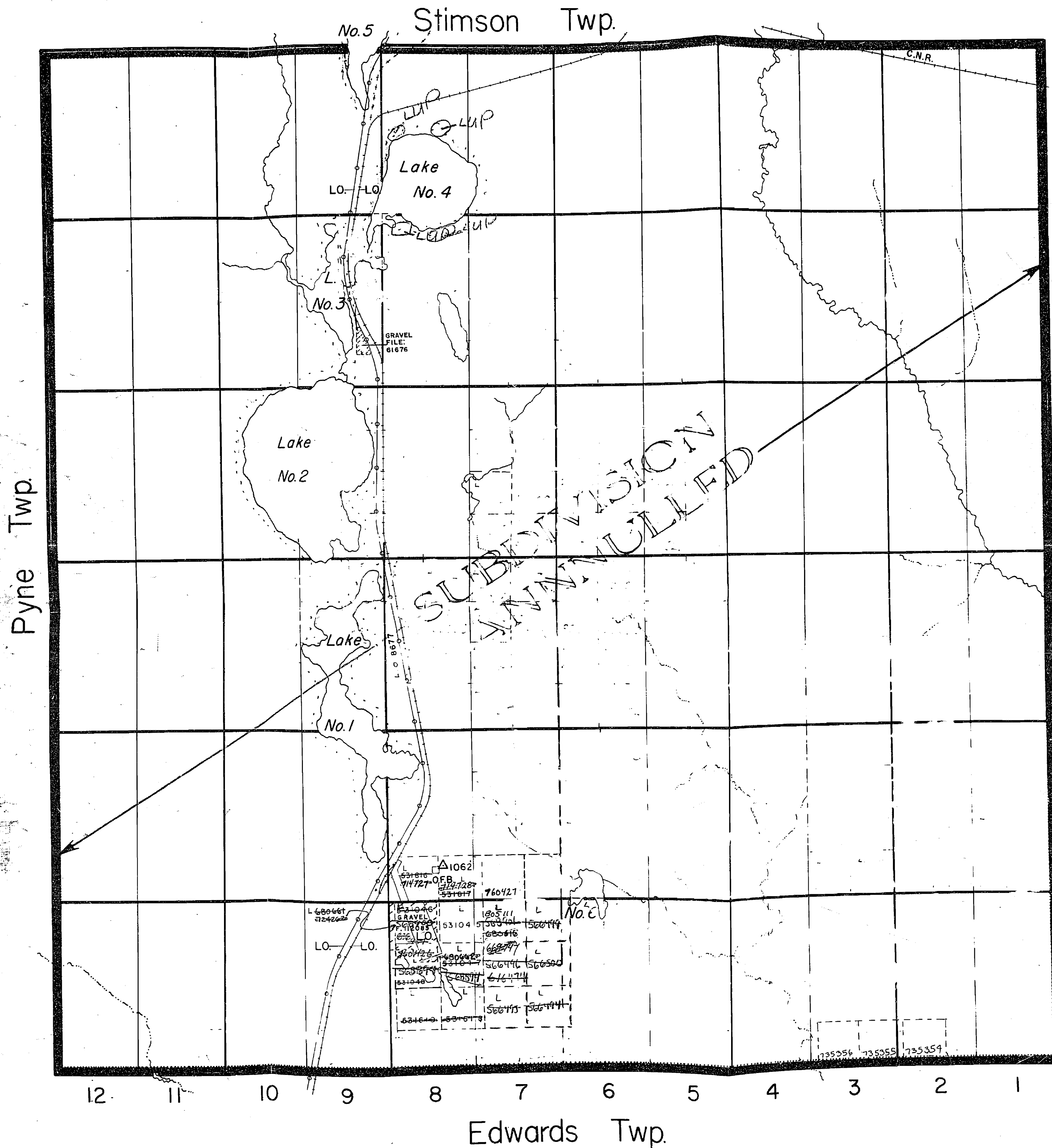
LO 2553 to Abitibi Electric Development Co. Ltd.  
5 Feb. 1932, covers Power Line.

LO 5958 to Abitibi Power & Paper Co. Ltd.  
6 May, 1942, covers Railway & Gravel Pit  
*Cancelled Nov. 12, 1973*

400' Surface Rights Reservation around  
all Lakes and Rivers.

PLAN NO. - M. 553

ONTARIO # 33  
MINISTRY OF NATURAL RESOURCES  
SURVEYS AND MAPPING BRANCH



G.E.M.

Replaced Aug 17/84 LP

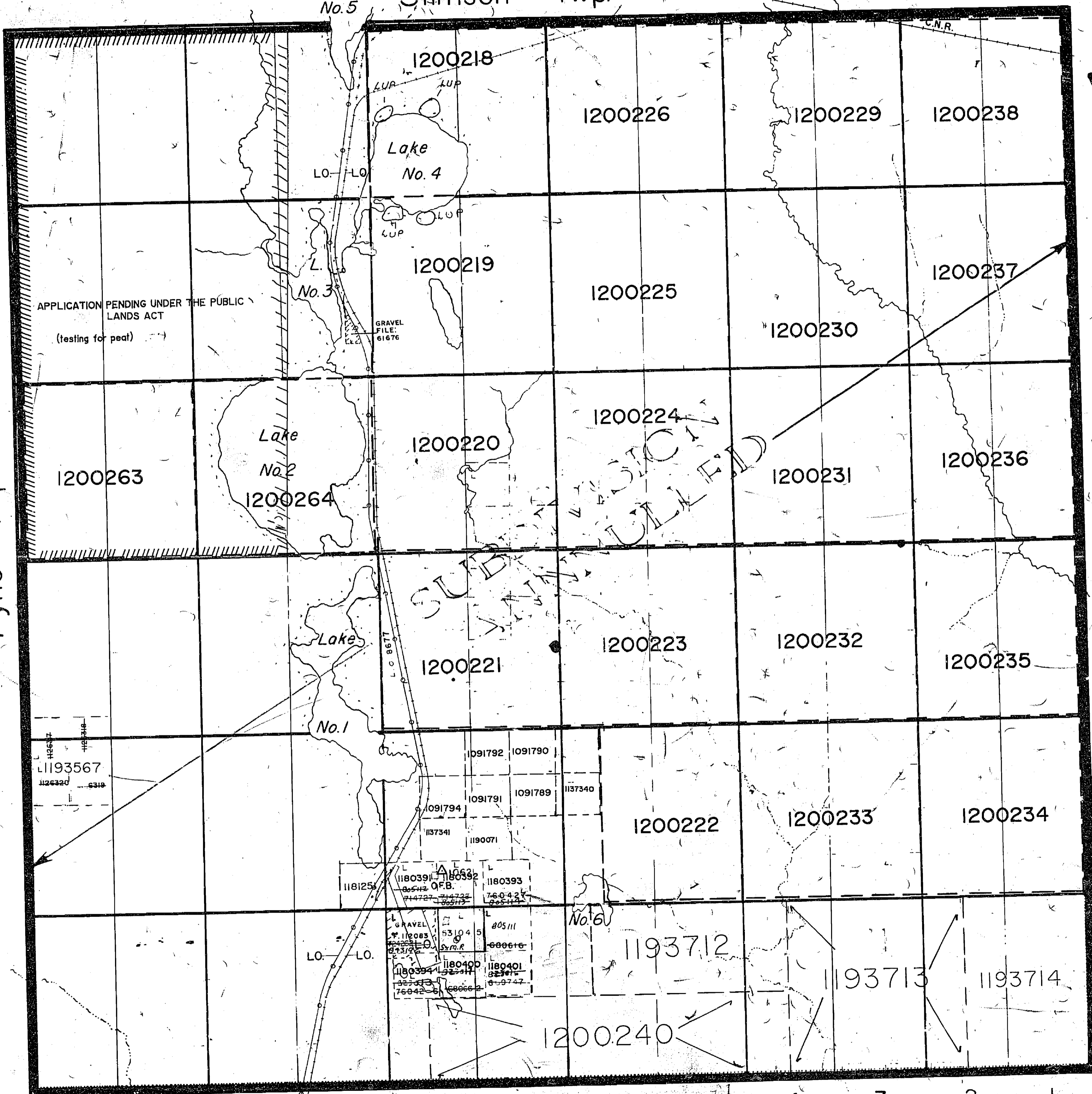
MORTIMER M-553

391

THE INFORMATION THAT APPEARS ON THIS MAP HAS BEEN COMPILED FROM VARIOUS SOURCES, AND ACCURACY IS NOT GUARANTEED. THOSE WISHING TO STAKE MINING CLAIMS SHOULD CONSULT WITH THE MINING RECORDER, MINISTRY OF NORTHERN DEVELOPMENT AND MINES, FOR ADDITIONAL INFORMATION ON THE STATUS OF THE LANDS SHOWN HEREON.

G.E.M.

Pyne Twp.



Edwards Twp.

COPY OF THIS MYLAR ARCHIVED JUN 13/93

*Rec'd August 17/87*

THE TOWNSHIP OF  
**MORTIMER**  
 DISTRICT OF COCHRANE  
 LARDER LAKE MINING DIVISION  
 SCALE: 1-INCH=40 CHAINS

VI  
V  
IV  
III  
II  
I

Sherring Twp.

**LEGEND**

- PATENTED LAND (P)
- CROWN LAND SALE (C.S.)
- LEASES (L)
- LOCATED LAND (Loc)
- LICENSE OF OCCUPATION (L.O.)
- ROADS (—)
- IMPROVED ROADS (—)
- KING'S HIGHWAY (—)
- RAILWAYS (—)
- POWER LINES (—)
- MARSH OR MUSKEG (—)
- MINES (—)
- GEODETIC STATION (△)

**NOTES**

L.O.2553 to Abitibi Electric Development Co. Ltd  
 5 Feb. 1932, covers Power Line.  
 Cancelled November 12, 1973

L.O.5958 to Abitibi Power & Paper Co. Ltd.  
 6 May. 1942, covers Railway & Gravel Pit.

400' Surface Rights Reservation around all Lakes and Rivers.

**NOTICE OF FORESTRY ACTIVITY**

THIS TOWNSHIP / AREA FALLS WITHIN THE IROQUOIS FALLS MANAGEMENT UNIT AND MAY BE SUBJECT TO FORESTRY OPERATIONS. THE MNR UNIT FORESTER FOR THIS AREA CAN BE CONTACTED AT: P.O. BOX 730, 2 THIRD AVE., COCHRANE, ONT. POL 1C0 705-272-4365 #33

PLAN NO. M. 553

MINISTRY OF NATURAL RESOURCES  
 SURVEYS AND MAPPING BRANCH

MORTIMER M-553 June 18/93

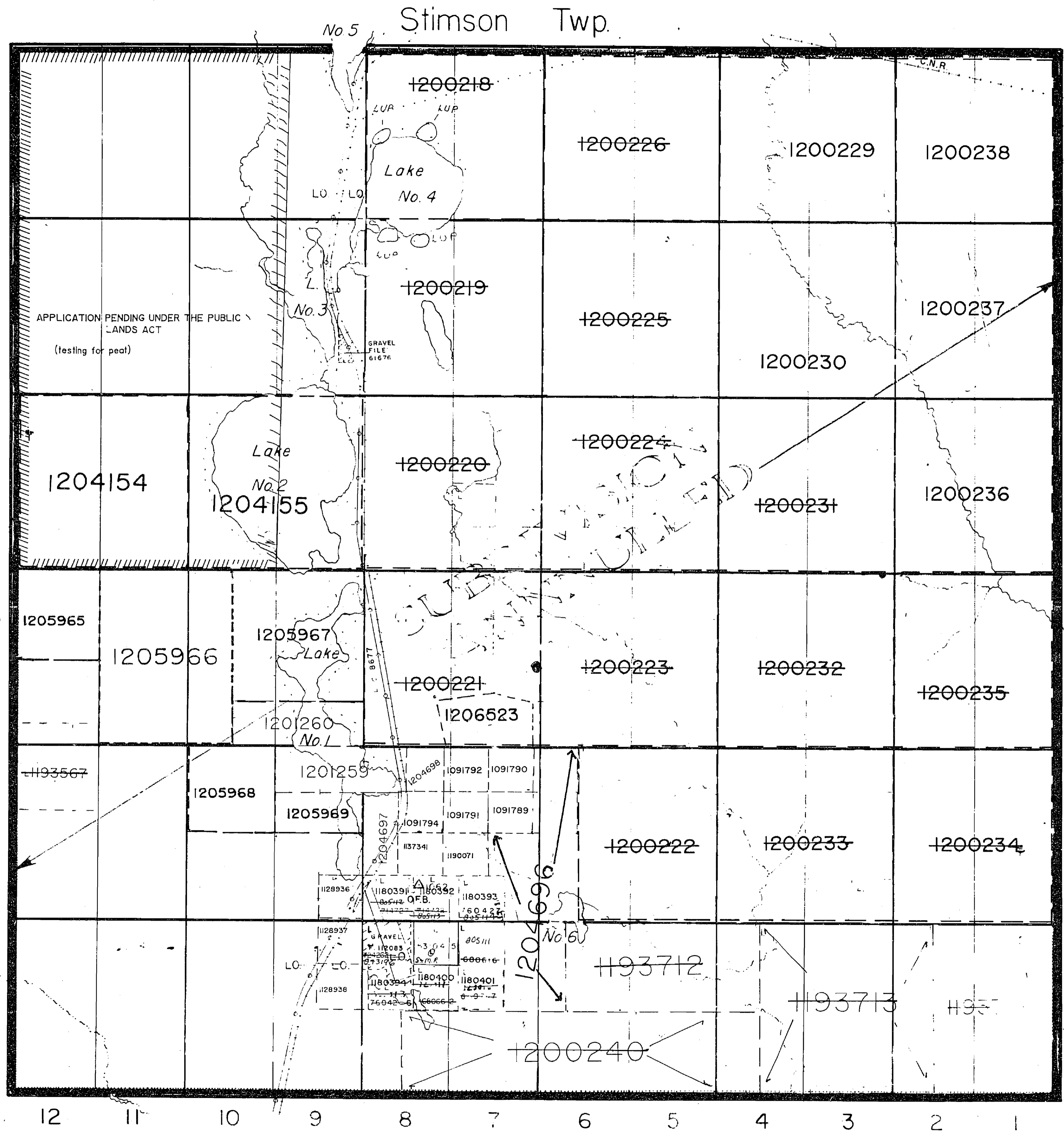
TWP. N. 223

TI

180391

Pyne Twp.

Sherring Twp.



THE TOWNSHIP OF  
OF  
**MORTIMER**  
DISTRICT OF COCHRANE  
LARDER LAKE  
MINING DIVISION

SCALE: 1-INCH=40 CHAINS

LEGEND

- PATENTED LAND (P)
- CROWN LAND SALE (C.S)
- LEASES (L)
- LOCATED LAND (Loc)
- LICENSE OF OCCUPATION (L.C)
- ROADS
- IMPROVED ROADS
- KING'S HIGHWAY
- RAILWAYS
- POWER LINES
- MARSH OR MUSKEG
- MINES
- GEODETIC STATION

NOTES

LO 2553 to Abitibi Electric Development Co. Lt.  
5 Feb 1932, covers Power Line.  
*Cancelled November 12/1973*  
LO 5958 to Abitibi Power & Paper Co Ltd  
6 May 1942, covers Railway & Gravel Pit.

400' Surface Rights Reservation around  
all Lakes and Rivers.

**NOTICE OF FORESTRY ACTIVITY**  
THIS TOWNSHIP / AREA FALLS WITHIN THE  
IROQUOIS FALLS MANAGEMENT UNIT  
AND MAY BE SUBJECT TO FORESTRY OPERATIONS.  
THE MNR UNIT FORESTER FOR THIS AREA CAN BE  
CONTACTED AT: P.O. BOX 730  
2 THIRD AVE.  
COCHRANE, ONT.  
POL ICO  
705-272-4365 #53

PLAN NO. - M. 553

MINISTRY OF NATURAL RESOURCES  
SURVEY AND MAPPING BRANCH

THE INFORMATION THAT APPEARS ON THIS MAP HAS BEEN COMPILED FROM VARIOUS SOURCES AND ACCURACY IS NOT GUARANTEED. THOSE WISHING TO STAKE MINING CLAIMS SHOULD CONSULT WITH THE MINING RECORDER, MINISTRY OF NORTHERN DEVELOPMENT AND MINES, FOR ADDITIONAL INFORMATION ON THE STATUS OF THE LANDS SHOWN HEREON.

G.E.M.

COPY OF THIS MYLAR ARCHIVED JUN 18/93

MORTIMER TOWNSHIP  
M-553  
July 14, 1995

L2B W 293

T1

80591

THE INFORMATION THAT APPEARS ON THIS MAP HAS BEEN COMPILED FROM VARIOUS SOURCES, AND ACCURACY IS NOT GUARANTEED. THOSE WISHING TO STAKE MINING CLAIMS SHOULD CONSULT WITH THE MINING RECORDER, MINISTRY OF NORTHERN DEVELOPMENT AND MINES, FOR ADDITIONAL INFORMATION ON THE STATUS OF THE LANDS SHOWN HEREON.

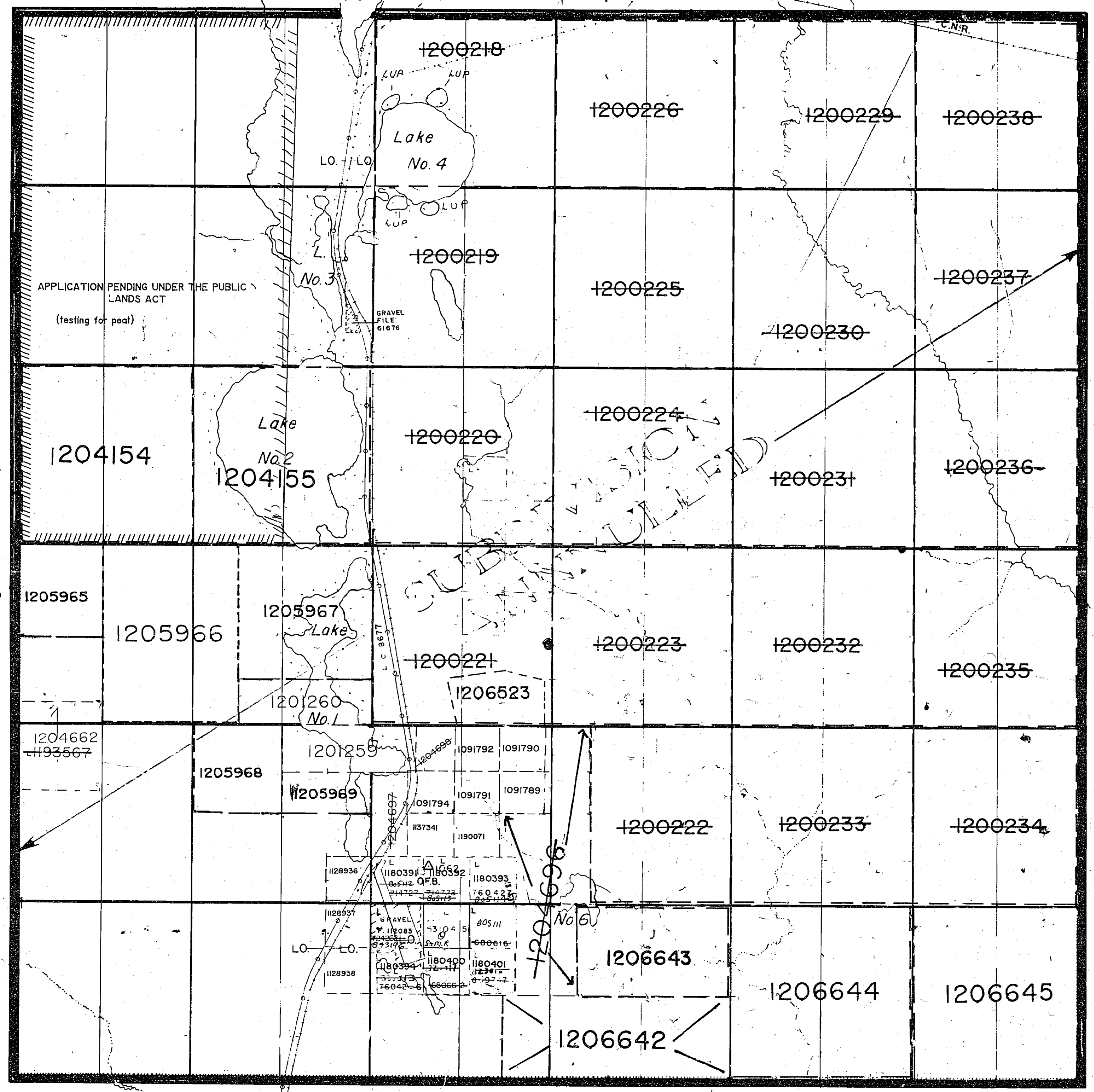
G.E.M.

Pyne Twp.

Stimson Twp.

Edwards Twp.

Sherring Twp.



THE TOWNSHIP OF  
**MORTIMER**  
 DISTRICT OF COCHRANE  
 LARDER LAKE MINING DIVISION

SCALE 1-INCH=40 CHAINS

**LEGEND**

PATENTED LAND	Ⓟ
CROWN LAND SALE	Ⓢ
LEASES	Ⓛ
LOCATED LAND	Loc
LICENSE OF OCCUPATION	L.O.
ROADS	—
IMPROVED ROADS	—
KING'S HIGHWAY	—
RAILWAYS	—
POWER LINES	—
MARSH OR MUSKEG	—
MINES	ⓧ
GEODETIC STATION	△

**NOTES**

L.O.2553 to Abitibi Electric Development Co. Ltd.  
 5 Feb. 1932, covers Power Line.  
 Cancelled November 12, 1973

L.O.5958 to Abitibi Power & Paper Co. Ltd.  
 6 May, 1942, covers Railway & Gravel Pit.

400' Surface Rights Reservation around all Lakes and Rivers.

**DATE OF ISSUE**  
 AUG 12 1996  
 LARDER LAKE MINING RECORDER'S OFFICE

**NOTICE OF FORESTRY ACTIVITY**  
 THIS TOWNSHIP / AREA FALLS WITHIN THE IROQUOIS FALLS MANAGEMENT UNIT AND MAY BE SUBJECT TO FORESTRY OPERATIONS. THE MNR UNIT FORESTER FOR THIS AREA CAN BE CONTACTED AT: P.O. BOX 730, 2 THIRD AVE., COCHRANE, ONT., P.O. 1C0, 705-272-4365 #33

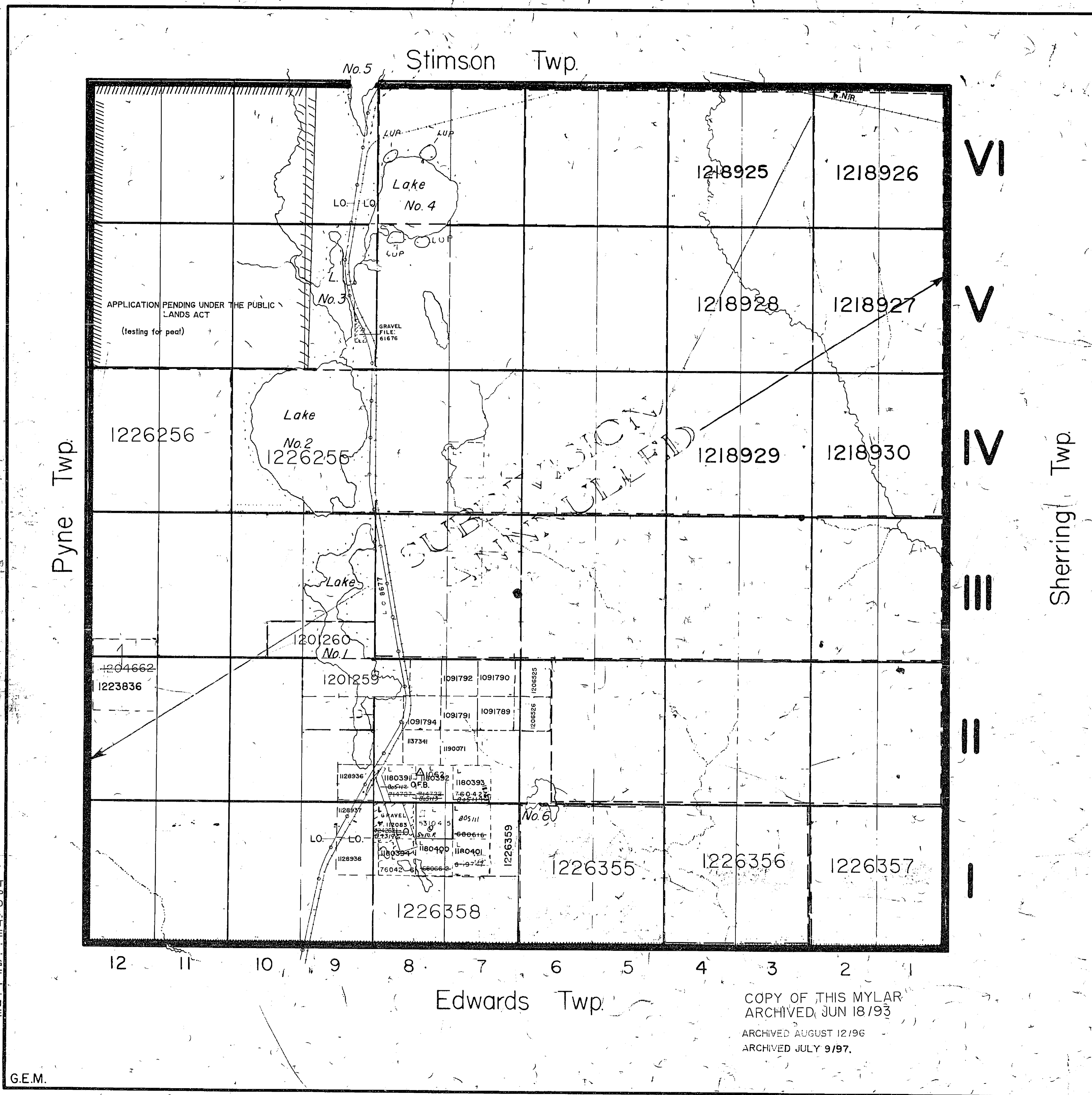
PLAN NO. - M. 553

ONTARIO  
 MINISTRY OF NATURAL RESOURCES  
 SURVEY AND MAPPING BRANCH

COPY OF THIS MYLAR  
 ARCHIVED JUN 18/93  
 ARCHIVED AUGUST 12/96

MORTIMER TOWNSHIP  
 M - 553  
 Archived 12, 1996

MORTIMER TWP. M. 553



DATE OF ISSUE  
 APR 28 1998  
 PROVINCIAL RECORDING OFFICE - SUDBURY

**LEGEND**

PATENTED LAND	(P)
CROWN LAND SALE	(C.S.)
LEASES	(L)
LOCATED LAND	(Loc)
LICENSE OF OCCUPATION	(L.O.)
ROADS	(---)
IMPROVED ROADS	(=)
KING'S HIGHWAY	(=)
RAILWAYS	(=)
POWER LINES	(=)
MARSH OR MUSKEG	(X)
MINES	(X)
GEODETIC STATION	(Δ)

**NOTES**

L.O. 2553 to Abitibi Electric Development Co. Ltd. 5 Feb. 1932, covers Power Line.  
 Cancelled November 12, 1973

L.O. 5958 to Abitibi Power & Paper Co. Ltd. 6 May. 1942, covers Railway & Gravel Pit.

400' Surface Rights Reservation around all Lakes and Rivers.

**NOTICE OF FORESTRY ACTIVITY**

THIS TOWNSHIP / AREA FALLS WITHIN THE IROQUOIS FALLS MANAGEMENT UNIT AND MAY BE SUBJECT TO FORESTRY OPERATIONS. THE MNR UNIT FORESTER FOR THIS AREA CAN BE CONTACTED AT: P.O. BOX 730, 2 THIRD AVE., COCHRANE, ONT., POL 1C0, 705-272-4365 #33

PLAN NO. - M. 553

MINISTRY OF NATURAL RESOURCES  
 SURVEY AND MAPPING BRANCH

THE INFORMATION THAT APPEARS ON THIS MAP HAS BEEN COMPILED FROM VARIOUS SOURCES, AND ACCURACY IS NOT GUARANTEED. THOSE WISHING TO STAKE MINING CLAIMS SHOULD CONSULT WITH THE MINING RECORDER, MINISTRY OF NORTHERN DEVELOPMENT AND MINES, FOR ADDITIONAL INFORMATION ON THE STATUS OF THE LANDS SHOWN HEREON.

COPY OF THIS MYLAR ARCHIVED JUN 18/93  
 ARCHIVED AUGUST 12/96  
 ARCHIVED JULY 9/97.

G.E.M.

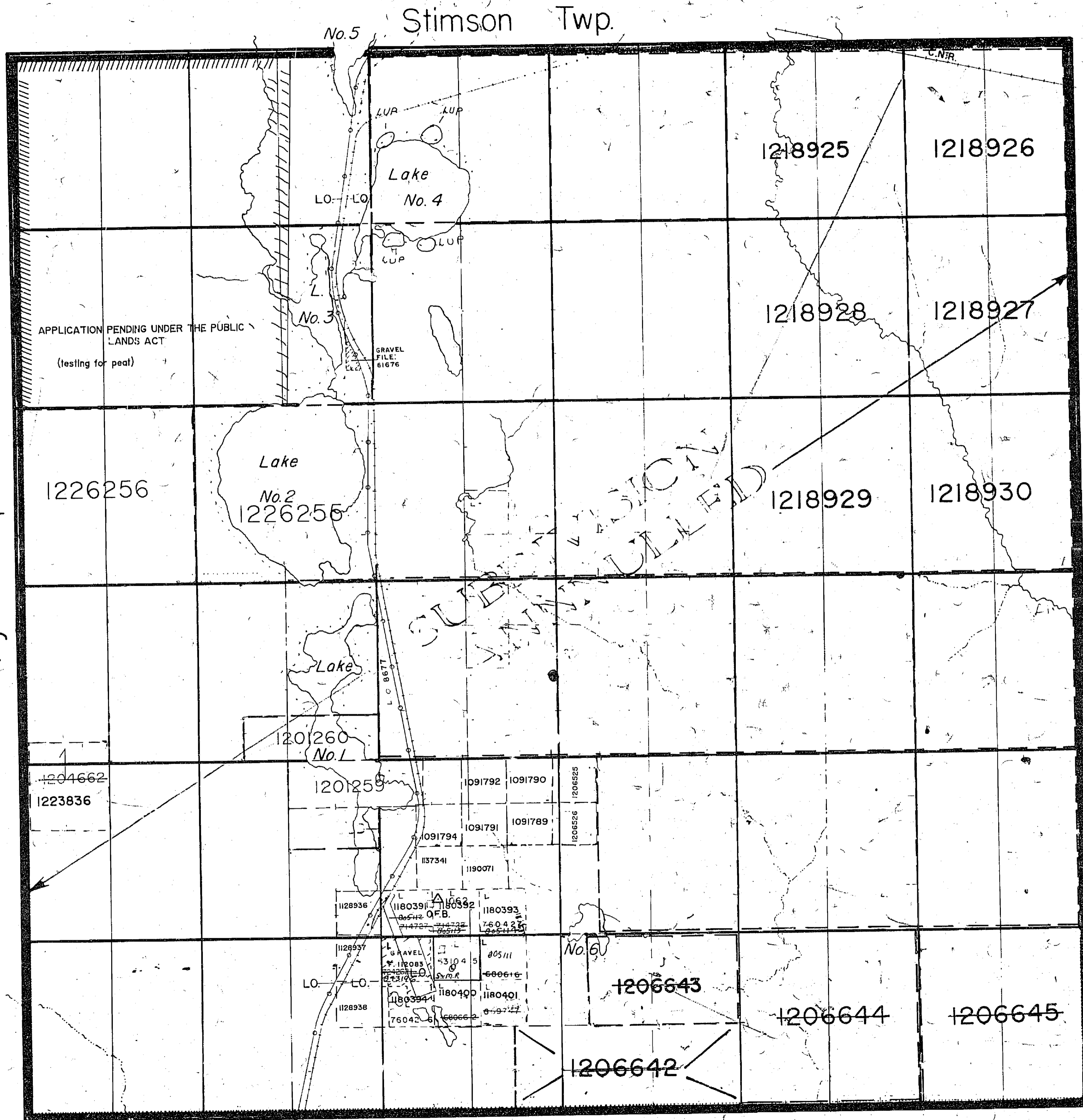
*Beard August 17/84*

MORTIMER TWP. M. 553

1180391

Pyne Twp.

Sherring Twp.



VI

V

IV

III

II

I

THE TOWNSHIP  
OF  
**MORTIMER**  
DISTRICT OF  
COCHRANE  
LARDER LAKE  
MINING DIVISION

SCALE: 1-INCH=40 CHAINS

LEGEND

- PATENTED LAND Ⓟ
- CROWN LAND SALE C.S.
- LEASES L
- LOCATED LAND Loc
- LICENSE OF OCCUPATION L.O.
- ROADS [Symbol]
- IMPROVED ROADS [Symbol]
- KING'S HIGHWAY [Symbol]
- RAILWAYS [Symbol]
- POWER LINES [Symbol]
- MARSH OR MUSKEG [Symbol]
- MINES ⚡
- GEODETIC STATION ⚓

NOTES

L.O. 2553 to Abitibi Electric Development Co. Ltd.  
5 Feb. 1932, covers Power Line.

L.O. 5958 to Abitibi Power & Paper Co. Ltd.  
6 May. 1942, covers Railway & Gravel Pit.

400' Surface Rights Reservation around  
all Lakes and Rivers.

DATE OF ISSUE

DEC 17 1993

PROVINCIAL RECORDING  
OFFICE - SUBBU

NOTICE OF FORESTRY ACTIVITY

THIS TOWNSHIP / AREA FALLS WITHIN THE  
IROQUOIS FALLS MANAGEMENT UNIT  
AND MAY BE SUBJECT TO FORESTRY OPERATIONS.  
THE MNR UNIT FORESTER FOR THIS AREA CAN BE  
CONTACTED AT: P.O. BOX 730  
2 THIRD AVE.  
COCHRANE, ONT.  
POL ICO  
705-272-4365 #33

PLAN NO. - M. 553

MINISTRY OF NATURAL RESOURCES  
SURVEYS AND MAPPING BRANCH

THE INFORMATION THAT  
APPEARS ON THIS MAP  
HAS BEEN COMPILED  
FROM VARIOUS SOURCES,  
AND ACCURACY IS NOT  
GUARANTEED. THOSE  
WISHING TO STAKE MIN-  
ING CLAIMS SHOULD CON-  
SULT WITH THE MINING  
RECORDER, MINISTRY OF  
NORTHERN DEVELOP-  
MENT AND MINES, FOR AD-  
DITIONAL INFORMATION  
ON THE STATUS OF THE  
LANDS SHOWN HEREON.

G.E.M.

COPY OF THIS MYLAR  
ARCHIVED JUN 18/93  
ARCHIVED AUGUST 12/96  
ARCHIVED JULY 9/97.

Edwards Twp.

*Beva August 17/94*

126 W 203

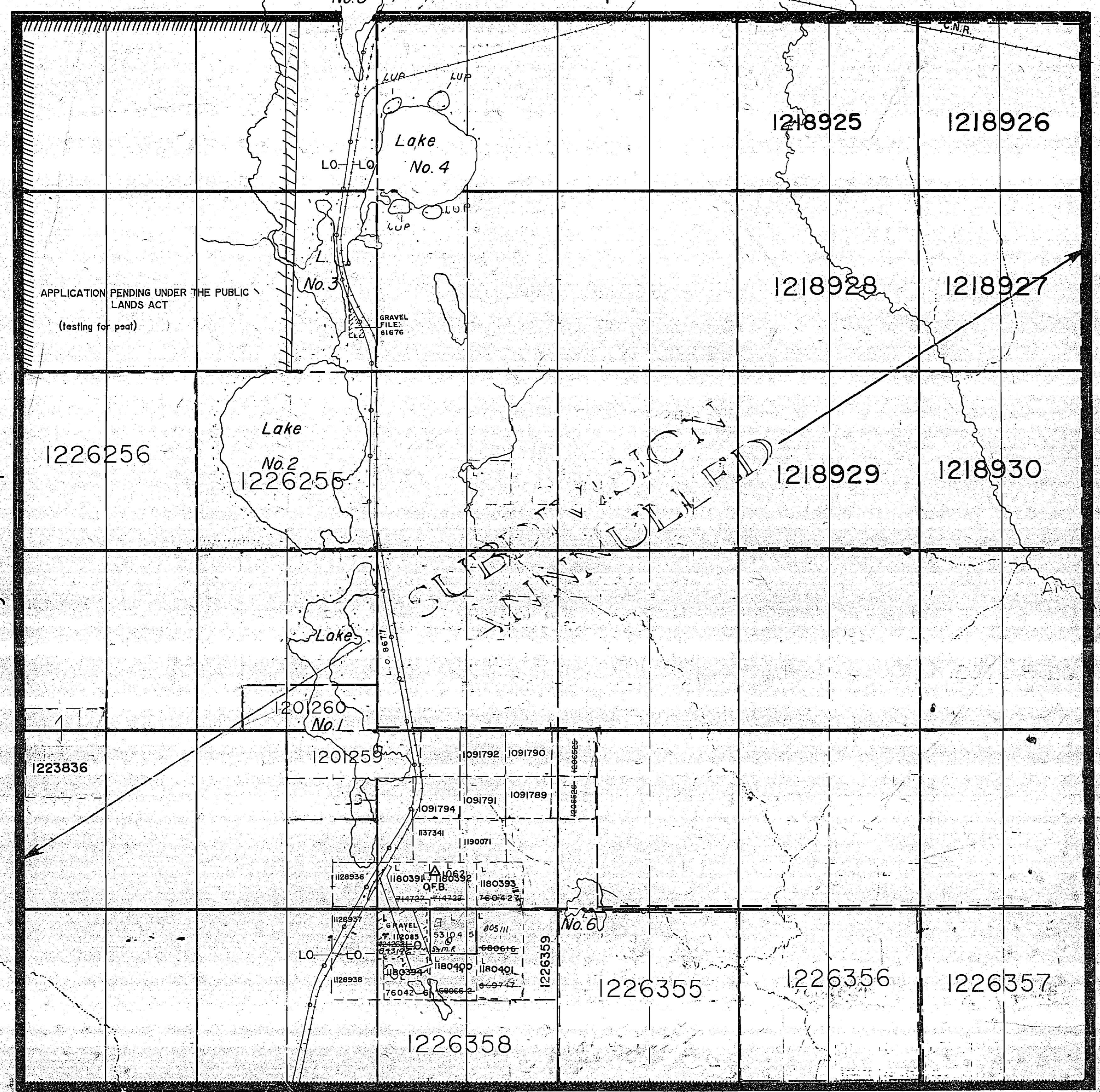
Pyne Twp.

Stimson Twp.

Sherring Twp.

Edwards Twp.

THE TOWNSHIP OF  
**MORTIMER**  
 DISTRICT OF COCHRANE  
 LARDER LAKE MINING DIVISION  
 SCALE: 1-INCH=40 CHAINS



VI

V

IV

III

II

I

**LEGEND**

- PATENTED LAND ⊙
- CROWN LAND SALE C.S.
- LEASES ⊖
- LOCATED LAND L.O.C.
- LICENSE OF OCCUPATION L.O.
- ROADS —
- IMPROVED ROADS —
- KING'S HIGHWAY —
- RAILWAYS —
- POWER LINES —
- MARSH OR MUSKEG —
- MINES X
- GEODETIC STATION Δ

**NOTES**

L.O.2553 to Abitibi Electric Development Co. Ltd  
 5 Feb. 1932, covers Power Line.  
 Canceled November 12, 1975  
 L.O.5958 to Abitibi Power & Paper Co. Ltd.  
 6 May, 1942, covers Railway & Gravel Pit.

400' Surface Rights Reservation around  
 all Lakes and Rivers.

**NOTICE OF FORESTRY ACTIVITY**

THIS TOWNSHIP / AREA FALLS WITHIN THE \_\_\_\_\_  
 IROQUOIS FALLS MANAGEMENT UNIT  
 AND MAY BE SUBJECT TO FORESTRY OPERATIONS.  
 THE MNR UNIT FORESTER FOR THIS AREA CAN BE  
 CONTACTED AT: P.O. BOX 730  
 2 THIRD AVE.  
 COCHRANE, ONT.  
 P.O. BOX 730  
 705-272-4365 #33

PLAN NO. - M. 553

ONTARIO  
 MINISTRY OF NATURAL RESOURCES  
 SURVEYS AND MAPPING BRANCH

THE INFORMATION THAT APPEARS ON THIS MAP HAS BEEN COMPILED FROM VARIOUS SOURCES, AND ACCURACY IS NOT GUARANTEED. THOSE WISHING TO STAKE MINING CLAIMS SHOULD CONSULT WITH THE MINING RECORDER, MINISTRY OF NORTHERN DEVELOPMENT AND MINES, FOR ADDITIONAL INFORMATION ON THE STATUS OF THE LANDS SHOWN HEREON.

G.E.M.

COPY OF THIS MYLAR  
 ARCHIVED JUN 18/93  
 ARCHIVED AUGUST 12/96  
 ARCHIVED JULY 9/97.

Rec'd. August 17/84. meB

MORTIMER TWP. M-553

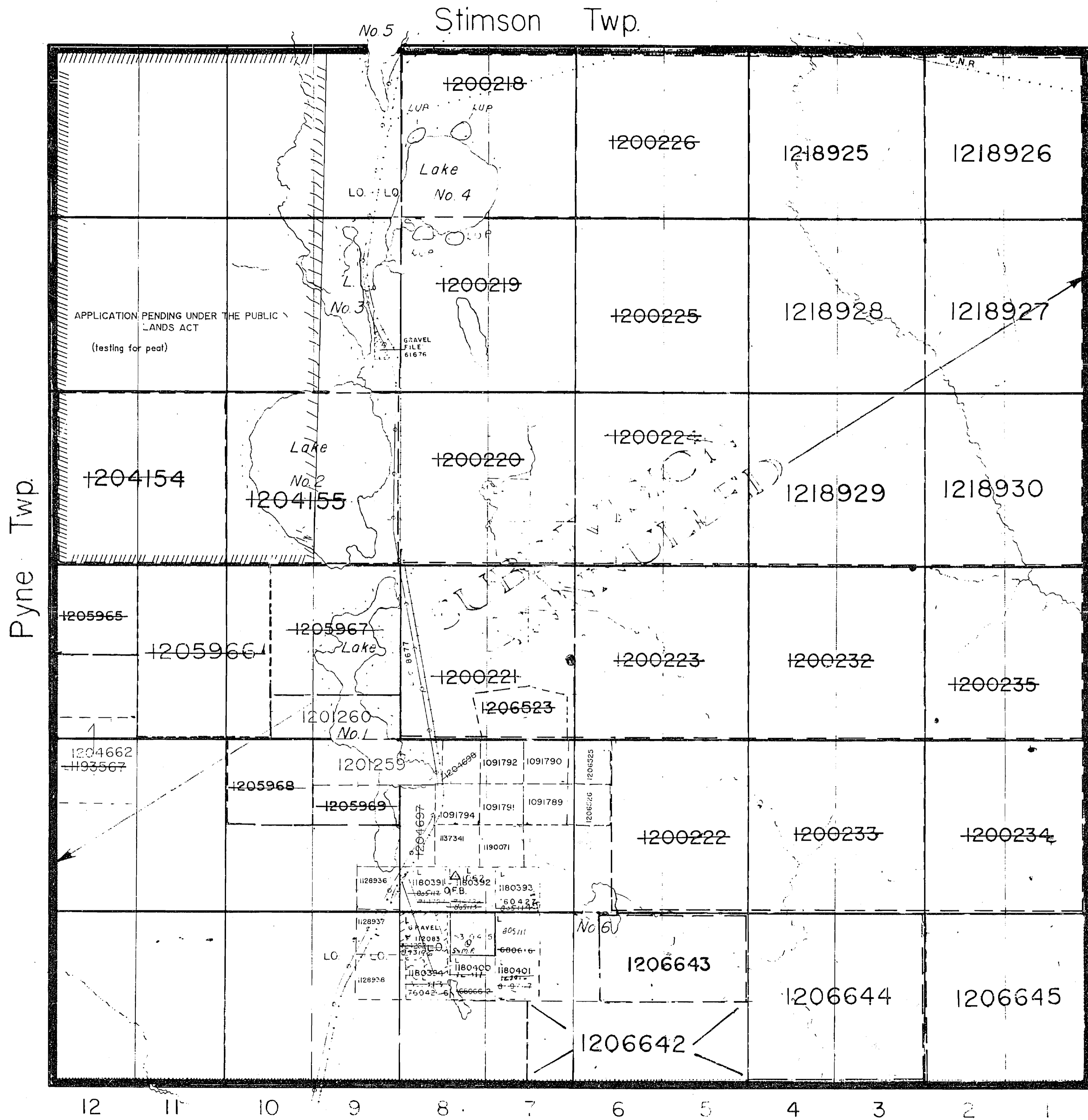


223 M.W. 223

MORTIMER

TI

180391



VI

V

IV

III

II

I

Sherring Twp.

THE TOWNSHIP OF  
MORTIMER

DISTRICT OF COCHRANE  
LARDER LAKE MINING DIVISION

SCALE: 1-INCH=40 CHAINS

LEGEND

- PATENTED LAND Ⓟ
- CROWN LAND SALE CS
- LEASES L
- LOCATED LAND Loc
- LICENSE OF OCCUPATION LC
- ROADS —
- IMPROVED ROADS —
- KING'S HIGHWAY —
- RAILWAYS —
- POWER LINES —
- MARSH OR MUSKEG —
- MINES X
- GEODETTIC STATION △

NOTES

LO 2553 to Abitibi Electric Development Co Ltd  
5 Feb 1932, covers Power Line  
LO 5958 to Abitibi Power & Paper Co Ltd  
6 May 1942, covers Railway & Gravel Pit

400' Surface Rights Reservation around  
all Lakes and Rivers.

NOTICE OF FORESTRY ACTIVITY  
THIS TOWNSHIP / AREA FALLS WITHIN THE \_\_\_\_\_  
IROQUOIS FALLS MANAGEMENT UNIT  
AND MAY BE SUBJECT TO FORESTRY OPERATIONS.  
THE MNR UNIT FORESTER FOR THIS AREA CAN BE  
CONTACTED AT: P.O. BOX 730  
2 THIRD AVE.  
COCHRANE, ONT.  
POL 1C0  
705-272-4365

PLAN NO. - M. 553

MINISTRY OF NATURAL RESOURCES

THE INFORMATION THAT APPEARS ON THIS MAP HAS BEEN COMPILED FROM VARIOUS SOURCES, AND ACCURACY IS NOT GUARANTEED. THOSE WISHING TO STAKE MINING CLAIMS SHOULD CONSULT WITH THE MINING RECORDER, MINISTRY OF NORTHERN DEVELOPMENT AND MINES, FOR ADDITIONAL INFORMATION ON THE STATUS OF THE LANDS SHOWN HEREON.

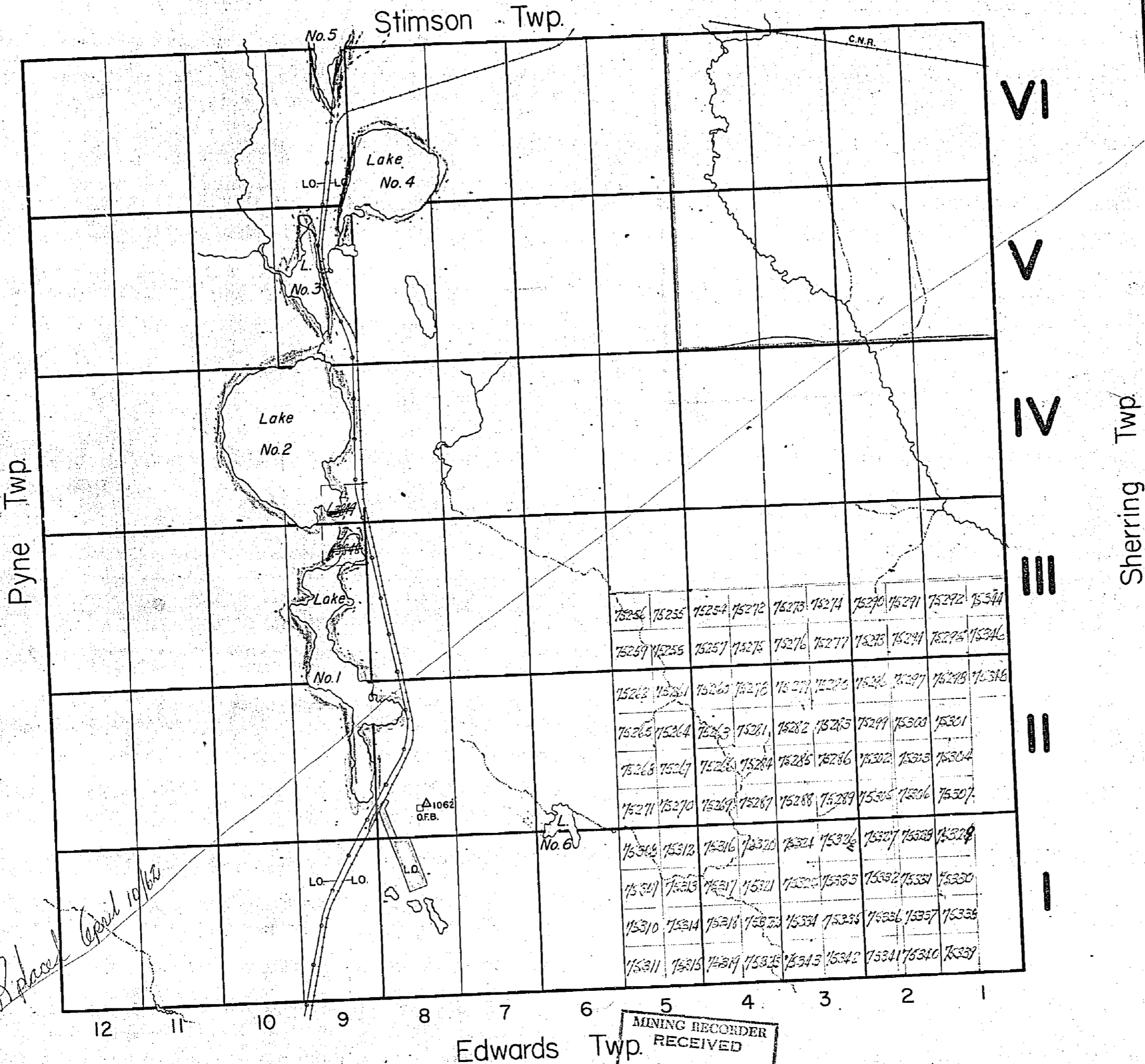
G.E.M.

COPY OF THIS MYLAP  
ARCHIVED JUN 18/93

ARCHIVED JULY 9/97

MORTIMER  
ARCHIVED JULY/1997

MORTIMER TWP. FROM



THE TOWNSHIP OF  
**MORTIMER**  
DISTRICT OF COCHRANE  
LARDER LAKE MINING DIVISION  
SCALE: 1-INCH=40 CHAINS

**LEGEND**

PATENTED LAND	Ⓟ
CROWN LAND SALE	Ⓞ
LEASES	Ⓛ
LOCATED LAND	Loc.
LICENSE OF OCCUPATION	L.O.
ROADS	
IMPROVED ROADS	
KING'S HIGHWAY	
RAILWAYS	
POWER LINES	
MARSH OR MUSKEG	
MINES	
GEODETIC STATION	

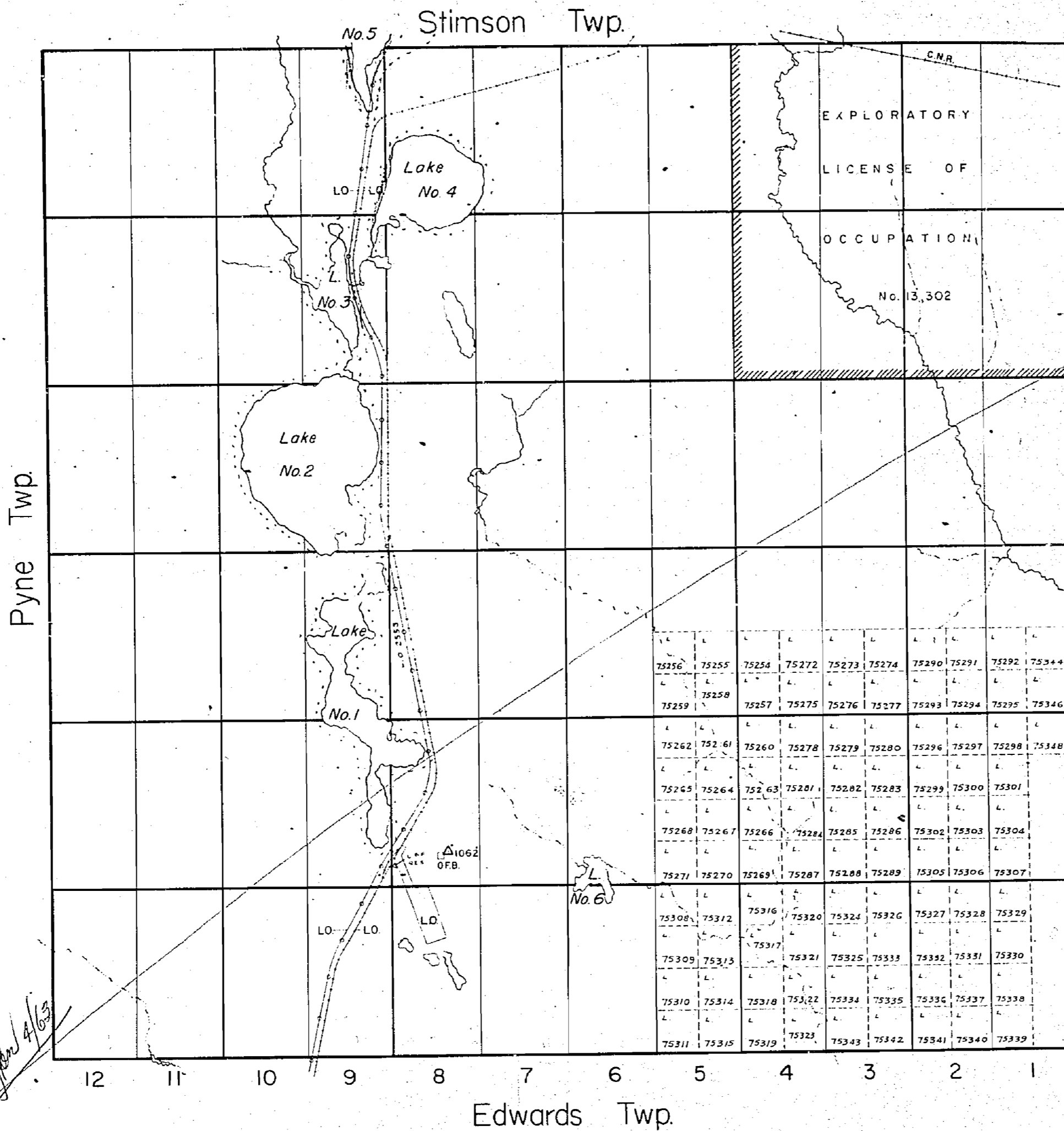
**NOTES**

L.O. 2553 to Abitibi Electric Development Co. Ltd.  
5 Feb. 1932, covers Power Line.

L.O. 5958 to Abitibi Power & Paper Co. Ltd.  
6 May. 1942, covers Railway & Gravel Pit.

400' Rsvd. to Dept. of L. & F.  
shown here: ~~map~~  
~~Area covered by Lic to prospect~~  
~~temporarily withdrawn~~  
revised Oct 20/42

MINING RECORDER  
RECEIVED  
APR 23 1953  
SWASTIKA - ONT.



**LEGEND**

PATENTED LAND	Ⓢ
CROWN LAND SALE	C.S.I.
LEASES	Ⓛ
LOCATED LAND	Loc
LICENSE OF OCCUPATION	L.O.
ROADS	—
IMPROVED ROADS	—
KING'S HIGHWAY	—
RAILWAYS	—
POWER LINES	—
MARSH OR MUSKEG	—
MINES	ⓧ
GEODETIC STATION	Δ

**NOTES**

L.O. 2553 to Abitibi Electric Development Co. Ltd. 5 Feb. 1932, covers Power Line

L.O. 5958 to Abitibi Power & Paper Co. Ltd. 6 May. 1942, covers Railway & Gravel Pit

400' Surface Rights Reservation around all Lakes and Rivers.

Area temporarily withdrawn from staking indicated thus: L.O. No. 13,302.

**MINING RECORDER**  
 RECEIVED  
 APR 10 1962  
 KIRKLAND LAKE - ONT.

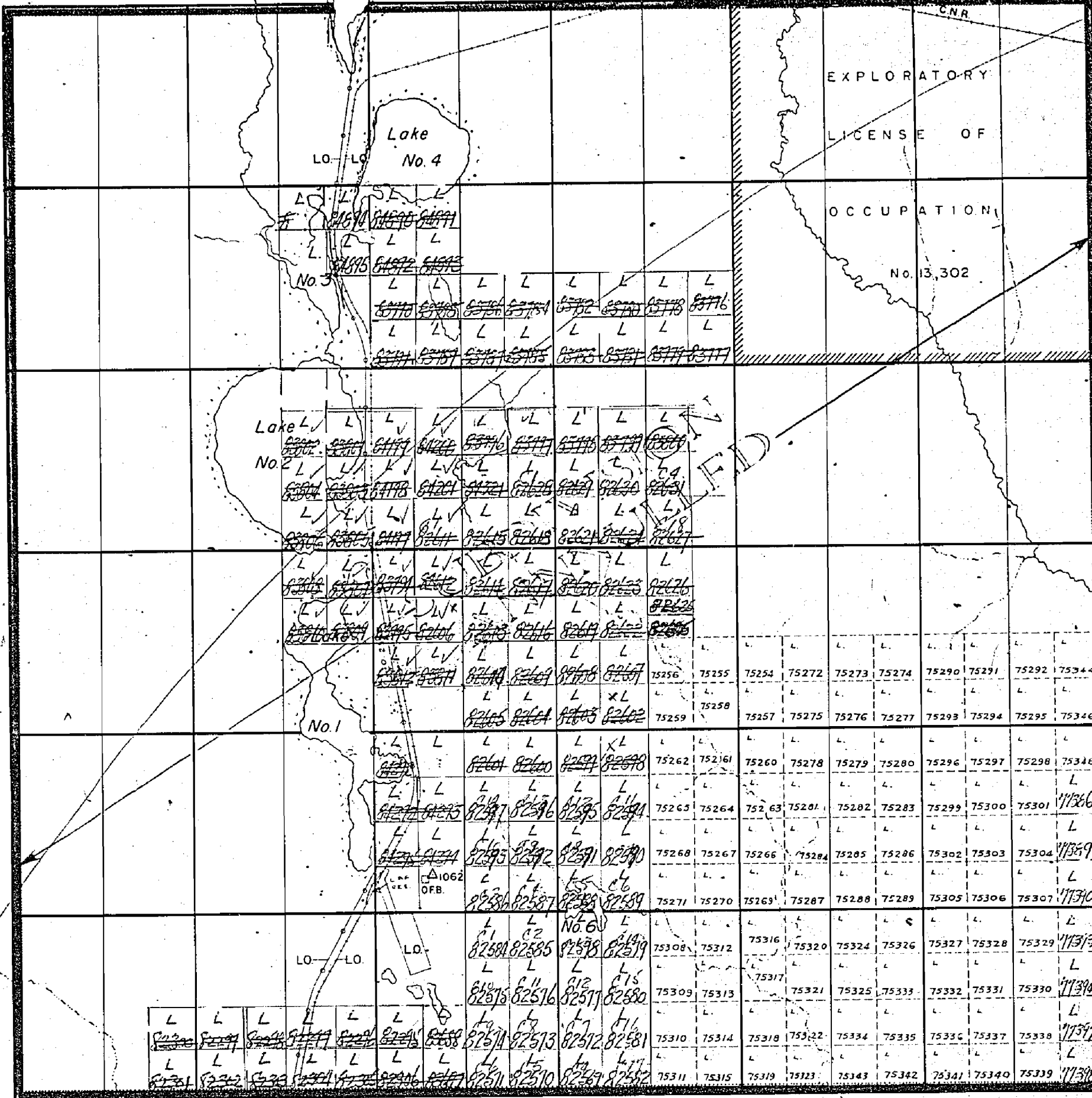
PLAN NO. - M. 553  
 DEPARTMENT OF MINES  
 - ONTARIO -

*Replaced Plan 4/63*

Pyne Twp.

Stimson Twp.

Sherring Twp.



*Replaced Jan 15/66*

VI  
V  
IV  
III  
II  
I

THE TOWNSHIP OF

# MORTIMER

DISTRICT OF COCHRANE

LARDER LAKE MINING DIVISION

SCALE: 1-INCH=40 CHAINS

### LEGEND

- PATENTED LAND Ⓟ
- CROWN LAND SALE C.S.
- LEASES Ⓛ
- LOCATED LAND Loc.
- LICENSE OF OCCUPATION L.O.
- ROADS ▬▬▬▬▬▬
- IMPROVED ROADS ▬▬▬▬▬▬
- KING'S HIGHWAY ▬▬▬▬▬▬
- RAILWAYS ▬▬▬▬▬▬
- POWER LINES ▬▬▬▬▬▬
- MARSH OR MUSKEG ▬▬▬▬▬▬
- MINES ⋈
- GEODETIC STATION △

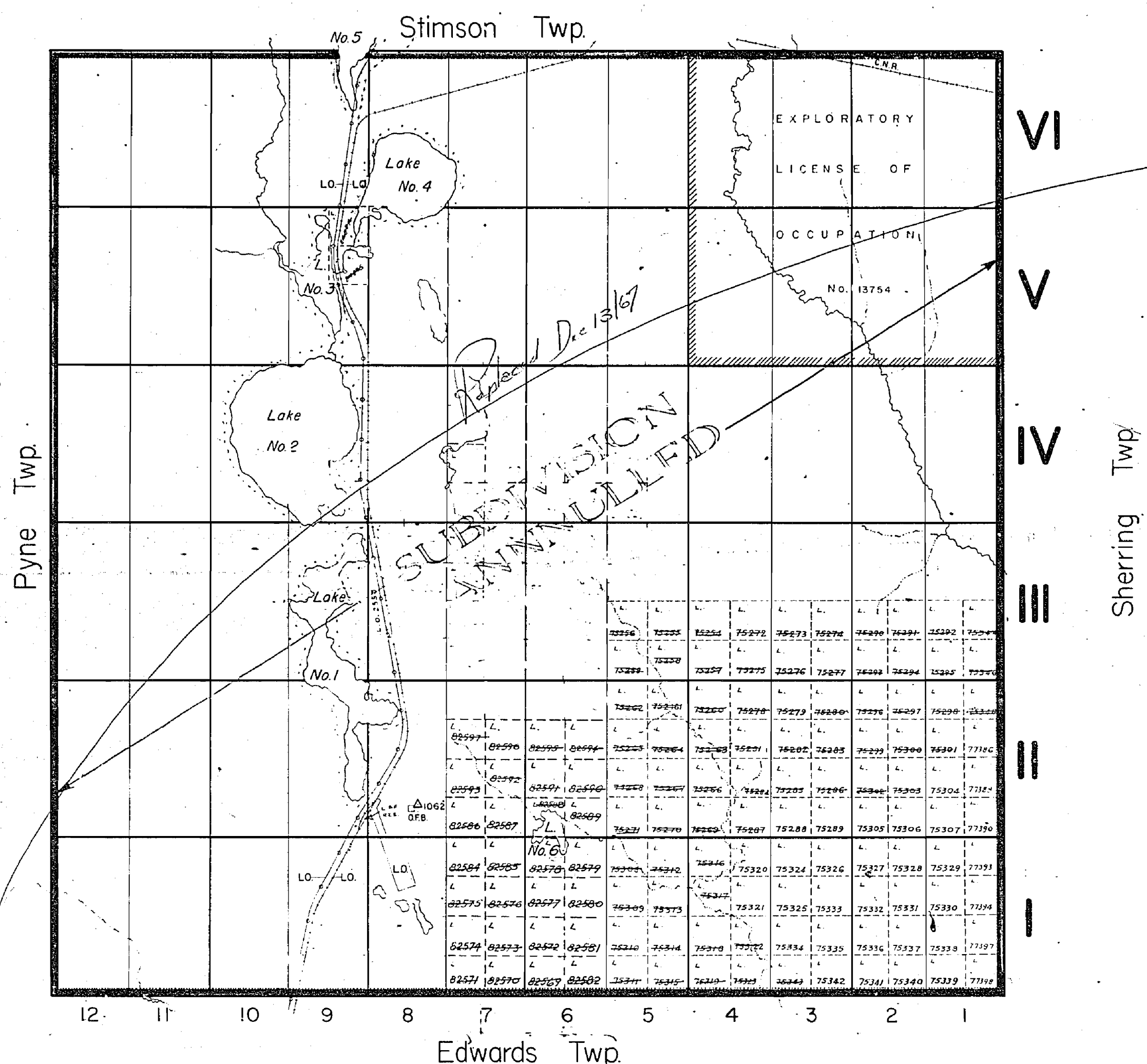
### NOTES

- L.O. 2553 to Abitibi Electric Development Co. Ltd. 5 Feb. 1932, covers Power Line
- L.O. 5958 to Abitibi Power & Paper Co. Ltd. 6 May, 1942, covers Railway & Gravel Pit
- 400' Surface Rights Reservation around all Lakes and Rivers.
- Area temporarily withdrawn from staking indicated thus:  , L.O. No. 13,302.

**MINING RECORDER**  
 RECEIVED  
 JAN 4 1963  
 KESWICK LAKE - ONT.

PLAN NO. - M. 553

DEPARTMENT OF MINES  
—ONTARIO—



THE TOWNSHIP OF  
**MORTIMER**  
 DISTRICT OF  
 COCHRANE  
 LARDER LAKE  
 MINING DIVISION  
 SCALE 1-INCH=40 CHAINS

**LEGEND**

PATENTED LAND	(P)
CROWN LAND SALE	CS
LEASES	L
LOCATED LAND	LOC
LICENSE OF OCCUPATION	L.O.
ROADS	
IMPROVED ROADS	
KING'S HIGHWAY	
RAILWAYS	
POWER LINES	
MARSH OR MUSKEG	
MINES	X
GEODETIC STATION	Δ

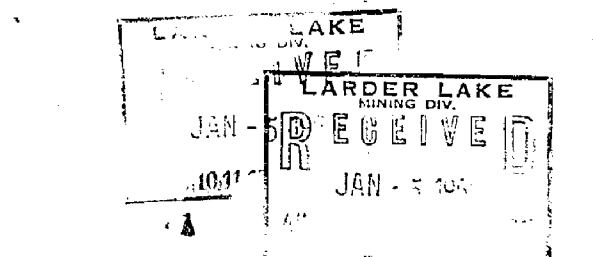
**NOTES**

L.O. 2553 to Abitibi Electric Development Co Ltd  
 5 Feb. 1932, covers Power Line

L.O. 5958 to Abitibi Power & Paper Co Ltd.  
 6 May, 1942, covers Railway & Gravel Pit

400' Surface Rights Reservation around  
 all Lakes and Rivers.

Area temporarily withdrawn from staking  
 indicated thus: [diagonal hatching], L.O. No 13754



PLAN NO. - M. 553  
 DEPARTMENT OF MINES  
 -ONTARIO-

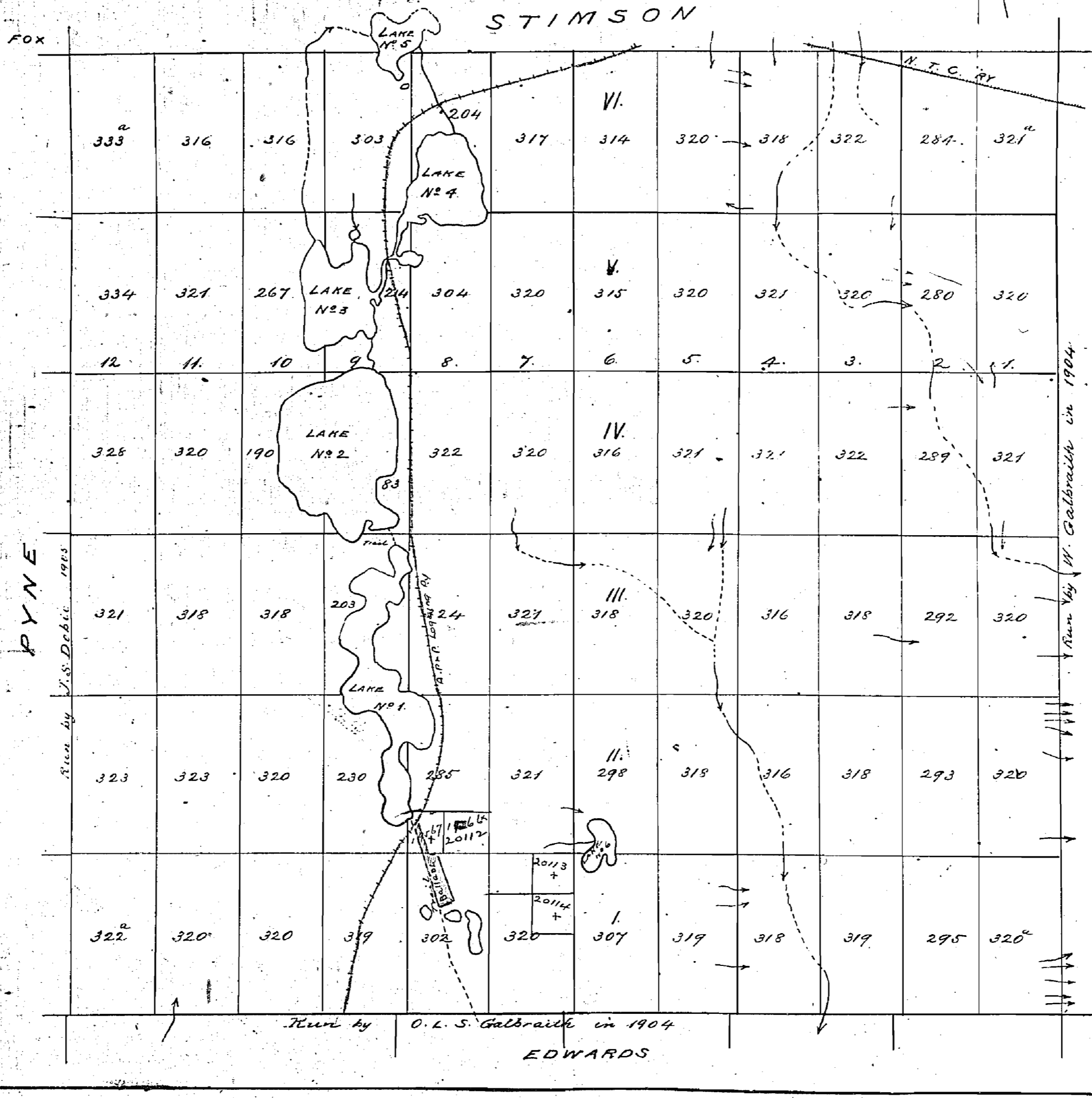
# MORTIMER.

DISTRICT OF NIPISSING.  
now Timistaming.

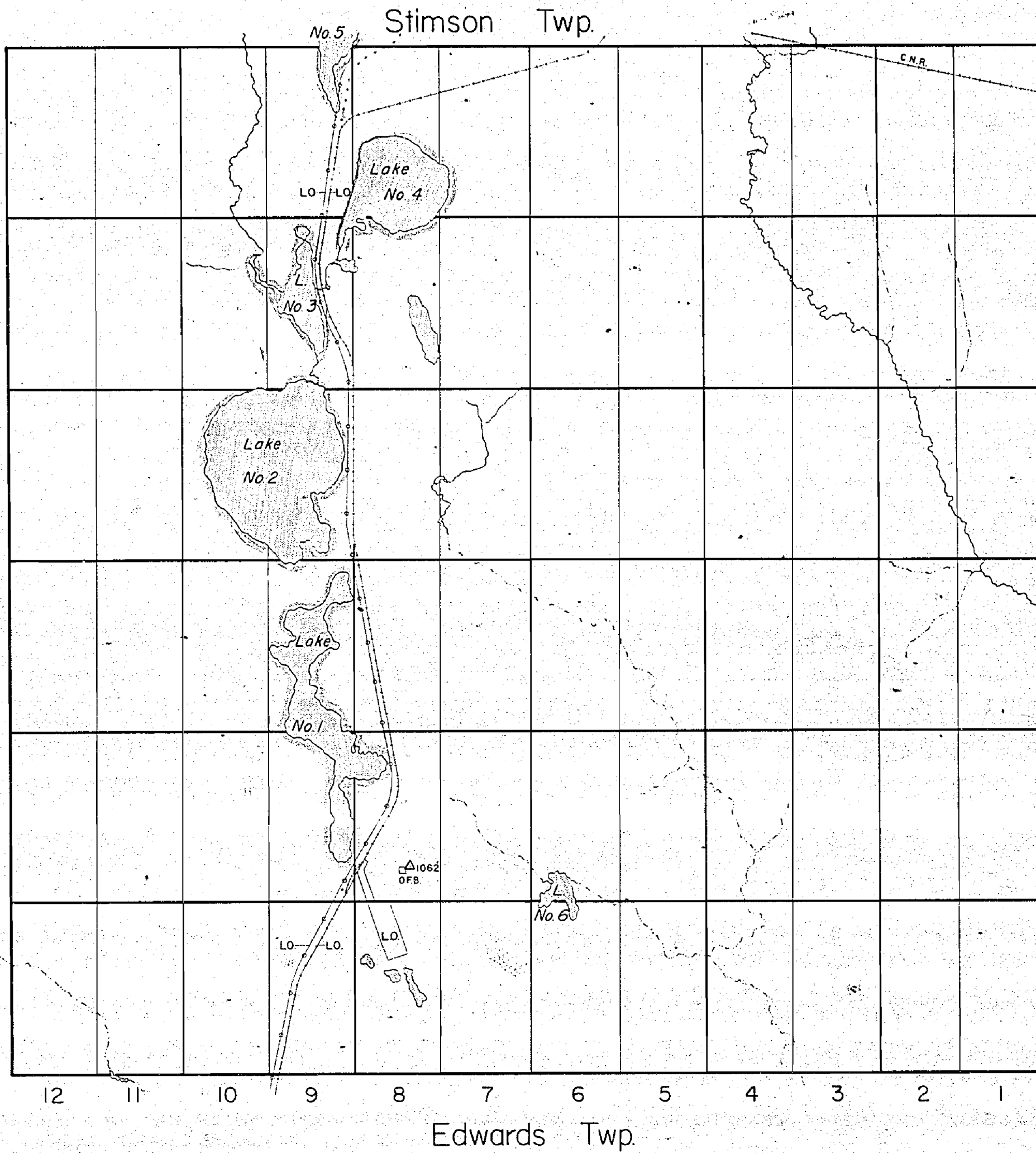
M-553

Scale: - 40 chains = 1 inch

STIMSON



Pyne Twp.



RECEIVED  
 JAN 22 1951  
 TIMISKAMING  
 MINING DIVISION

VI

V

IV

III

II

I

Sherring Twp.

THE TOWNSHIP OF  
 MORTIMER  
 DISTRICT OF COCHRANE  
 TIMISKAMING MINING DIVISION  
 SCALE: 1-INCH=40 CHAINS

**LEGEND**

PATENTED LAND	Ⓟ
CROWN LAND SALE	C.S.
LEASES	Ⓛ
LOCATED LAND	Loc.
LICENSE OF OCCUPATION	L.O.
ROADS	
IMPROVED ROADS	
KING'S HIGHWAY	
RAILWAYS	
POWER LINES	
MARSH OR MUSKEG	
MINES	
GEODETIC STATION	

**NOTES**

L.O.2553 to Abitibi Electric Development Co. Ltd.  
 5 Feb. 1932, covers Power Line.

L.O.5958 to Abitibi Power & Paper Co. Ltd.  
 6 May, 1942, covers Railway & Gravel Pit.

400' reservation surface rights

M-553

PLAN NO. ~~T-134a~~  
 DEPARTMENT OF MINES  
 —ONTARIO—