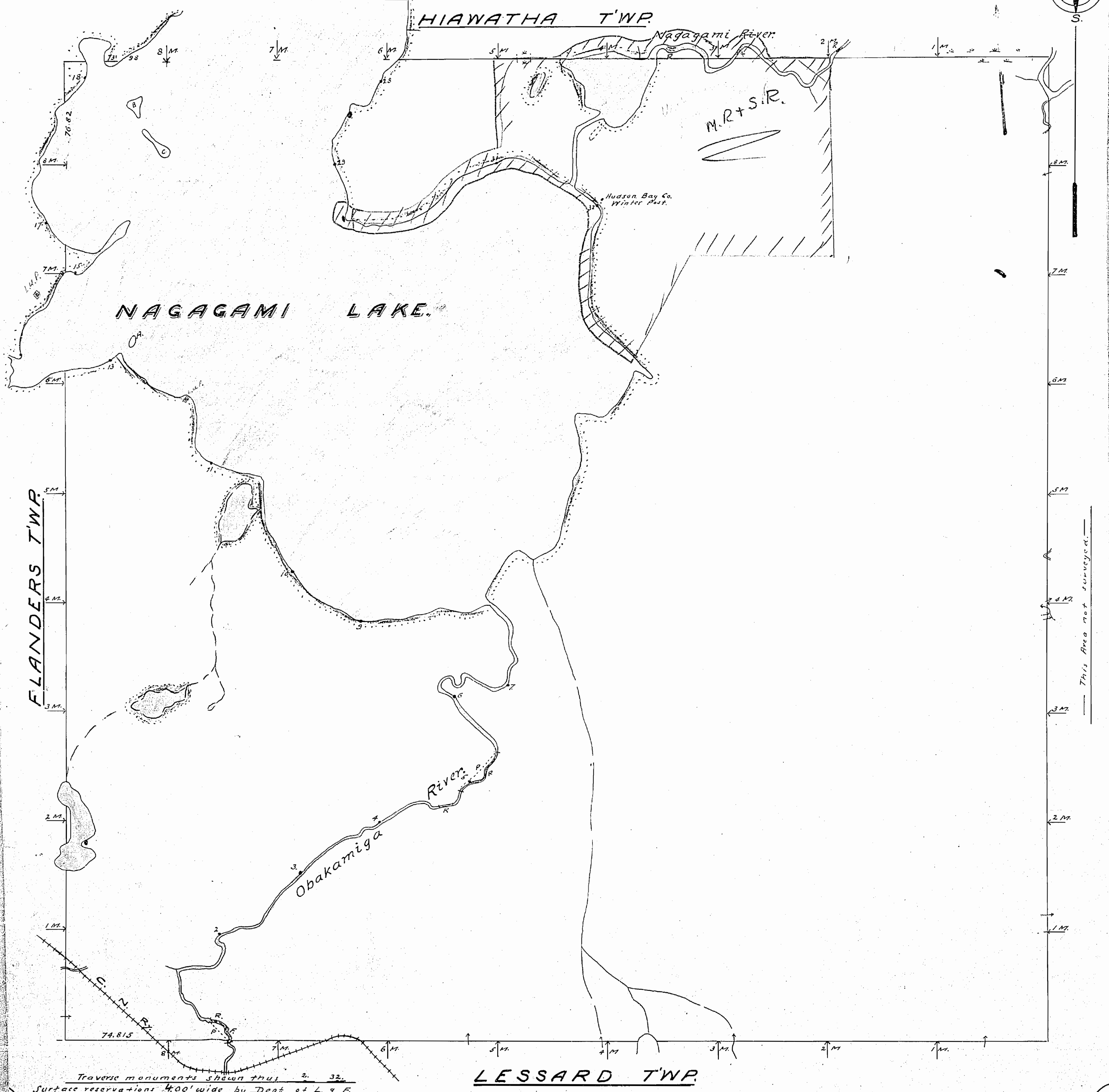
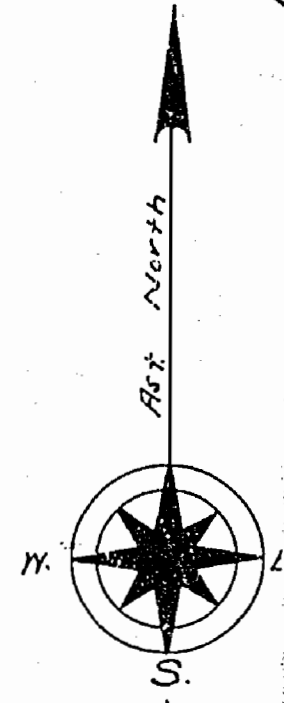


# PLAN OF NAGAGAMI TWP.

SAULT STE. MARIE MINING DIVISION.  
DISTRICT OF ALGOMA.

M-1321

— Scale, 40 chains to an inch. —



Traverse monuments shown thus 2. 32.  
Surface reservations 400' wide by Dept of L. & F.  
Shown hereon thus . L.U.P.

NAGAGAMI TWP. M-1321

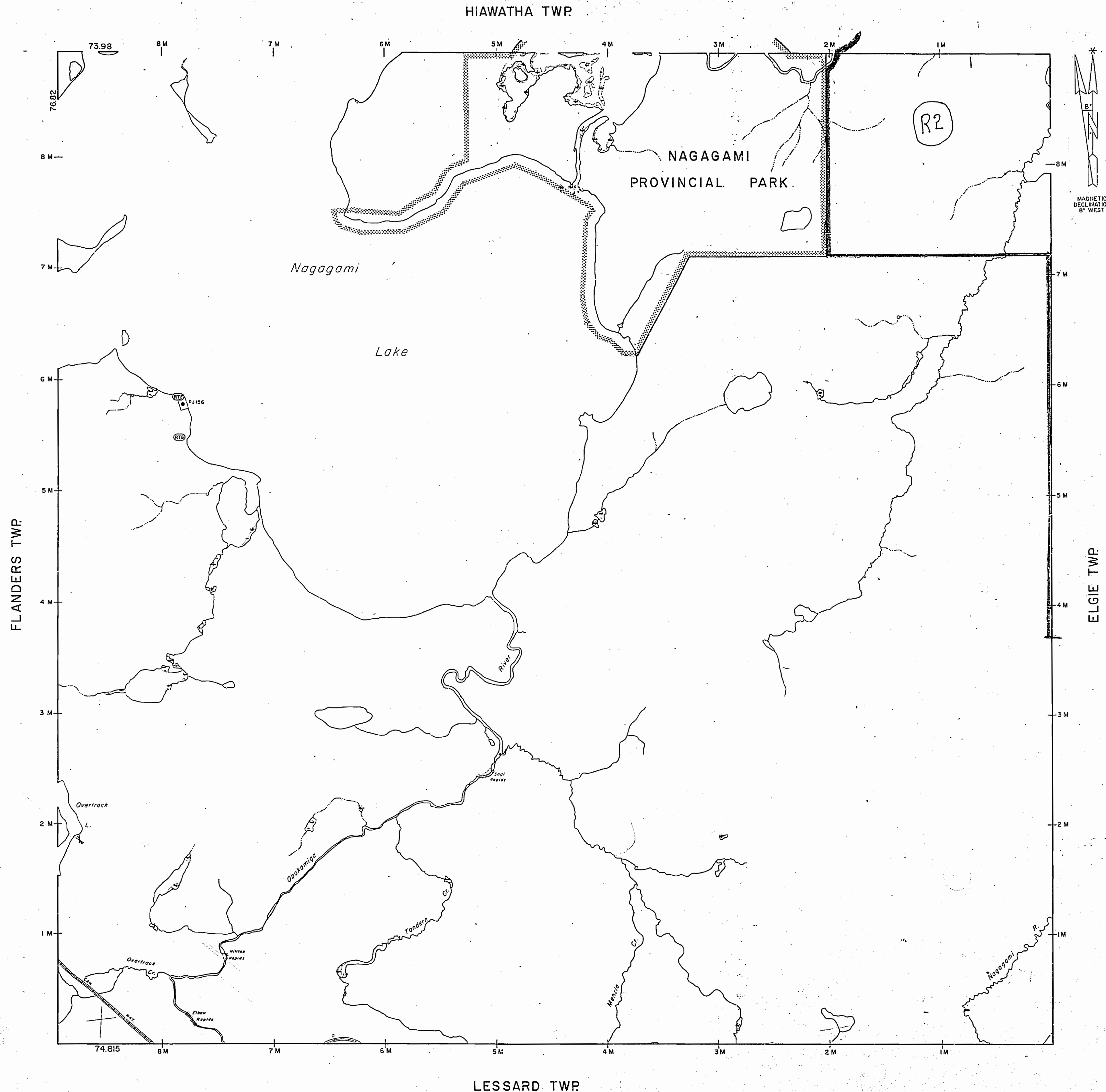
REFERENCES

AREAS WITHDRAWN FROM DISPOSITION

- M.R.O. - MINING RIGHTS ONLY
- S.R.O. - SURFACE RIGHTS ONLY
- M.+S. - MINING AND SURFACE RIGHTS

Description Order No. Date Disposition File

(R2) Sec. 35 W-L-1524/19 on T May 15/99 LRS



LEGEND

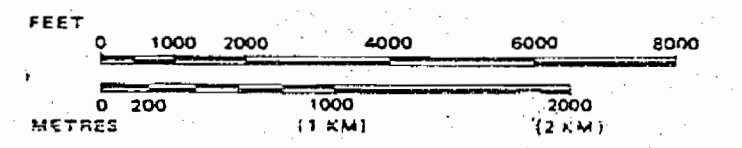
- HIGHWAY AND ROUTE No.
- OTHER ROADS
- TRAILS
- SURVEYED LINES:
  - TOWNSHIPS, BASE LINES, ETC.
  - LOTS, MINING CLAIMS, PARCELS, ETC.
- UNSURVEYED LINES:
  - LOT LINES
  - PARCEL BOUNDARY
  - MINING CLAIMS ETC.
- RAILWAY AND RIGHT OF WAY
- UTILITY LINES
- NON-PERENNIAL STREAM
- FLOODING OR FLOODING RIGHTS
- SUBDIVISION OR COMPOSITE PLAN
- RESERVATIONS
- ORIGINAL SHORELINE
- MARSH OR MUSKEG
- MINES
- TRAVERSE MONUMENT

DISPOSITION OF CROWN LANDS

TYPE OF DOCUMENT	SYMBOL
PATENT, SURFACE & MINING RIGHTS	
" SURFACE RIGHTS ONLY	
" MINING RIGHTS ONLY	
LEASE, SURFACE & MINING RIGHTS	
" SURFACE RIGHTS ONLY	
" MINING RIGHTS ONLY	
LICENCE OF OCCUPATION	
ORDER-IN-COUNCIL	
RESERVATION	
CANCELLED	
SAND & GRAVEL LAND USE PERMIT	

NOTE: MINING RIGHTS IN PARCELS PATENTED PRIOR TO MAY 6, 1913, VESTED IN ORIGINAL PATENTEES BY THE PUBLIC LANDS ACT, R.S.O. 1970, CHAP. 380, SEC. 63, SUBSEC. 1.

SCALE: 1 INCH = 40 CHAINS



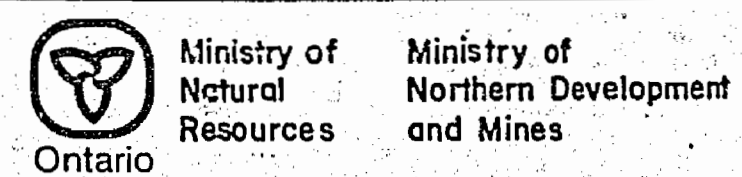
NOTES

- (X) THIS TWP. IS SUBJECT TO FOREST ACTIVITIES IN 92/93. FURTHER INFORMATION AVAILABLE ON FILE.
- (RTD) REMOTE TOURIST SET-UP

THE INFORMATION THAT APPEARS ON THIS MAP HAS BEEN COMPILED FROM VARIOUS SOURCES, AND ACCURACY IS NOT GUARANTEED. THOSE WISHING TO STAKE MINING CLAIMS SHOULD CONSULT WITH THE MINING RECORDER, MINISTRY OF NORTHERN DEVELOPMENT AND MINES, FOR ADDITIONAL INFORMATION ON THE STATUS OF THE LANDS SHOWN HEREON.

TOWNSHIP

**NAGAGAMI**  
 M.N.R. ADMINISTRATIVE DISTRICT  
**HEARST**  
 MINING DIVISION  
**PORCUPINE**  
 LAND TITLES / REGISTRY DIVISION  
**ALGOMA**



Date JULY, 1986. Number **G-2339**  
 ell. C.S. No. 6/86  
 ck. X.h. No. 7/86