

AREA OF
OF
NIPIGON RIVER

DISTRICT OF
THUNDER BAY

PORT ARTHUR
MINING DIVISION

SCALE: 1 INCH=40 CHAINS

LEGEND

- PATENTED LAND Ⓟ
- CROWN LAND SALE C.S.
- LEASES Ⓞ
- LOCATED LAND Loc.
- LICENSE OF OCCUPATION L.O.
- ROADS —
- IMPROVED ROADS —
- KING'S HIGHWAY —
- RAILWAYS —
- POWER LINES —
- MARSH OR MUSKEG —
- MINES X

NOTES

All claims staked adjoining Lake Nipigon are subject to a reservation of the surface rights 66' in perpendicular width from the present water level, approx. contour elevation 855'

Original Locations: 58 B.	159 T.	910 X.
59 B.	160 T.	911 X.
60 B.	161 T.	916 X.
61 B.	162 T.	

not this map by order of the Surveyor General.

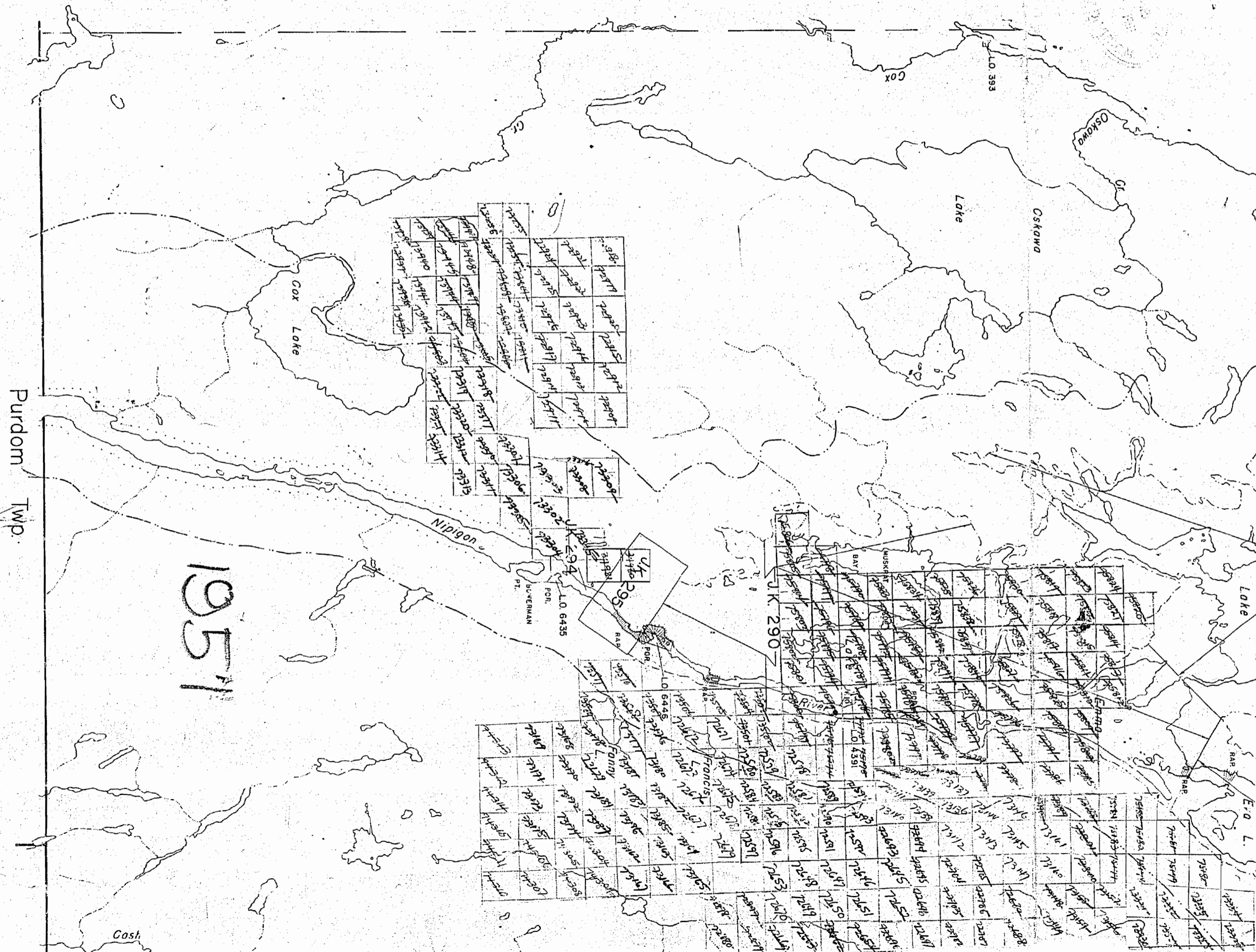
200' Reserve to Dept. of Lands & Forests shown thus: —

Temporary reservation limits for policing purposes revised 2nd. March, 1949. File No. 129479
H.E.P.C. Dwg. No. 82558 L.O. 6640
shown thus: —

Kings Highway No. 11, from Dept. of Highways
Plan No. P2544-21 & P2544-22. 200' R/W
By order in Council Nov. 9th, 1939. 100' on each side of the centre line of the highway is vested by the Dept. of Highways.
File 121757.

Virgin Falls Development. File 12198,
Florida. Contour 855' from H.E.P.C. plan 22-e-14 dated Apr. 8th, 1925
shown thus: —

*LAKE NIPIGON and
CASH BAY*



NIPIGON RIVER

AREA OF NIPIGON RIVER

DISTRICT OF THUNDER BAY

PORT ARTHUR MINING DIVISION

SCALE: 1 INCH = 40 CHAINS

LEGEND

- PATENTED LAND Ⓟ
- CROWN LAND SALE C.S.
- LEASES Ⓞ
- LOCATED LAND Loc.
- LICENSE OF OCCUPATION L.O.
- ROADS —
- IMPROVED ROADS —
- KING'S HIGHWAY —
- RAILWAYS —
- POWER LINES —
- MARSH OR MUSKEG —
- MINES X

400' SURFACE RIGHTS RESERVATION FLOODING NOTES

RESERVED TO DATUM 855'
All claims staked adjoining Lake Nipigon are to a reservation of the surface rights perpendicular width from the present level, approx. contour elevation 855'

Locations: 58 B.	159 T.	910 X.
59 B.	160 T.	911 X.
60 B.	161 T.	918 X.
61 B.	162 T.	

In this map by order of the Surveyor

Reserve to Dept. of Lands & Forests

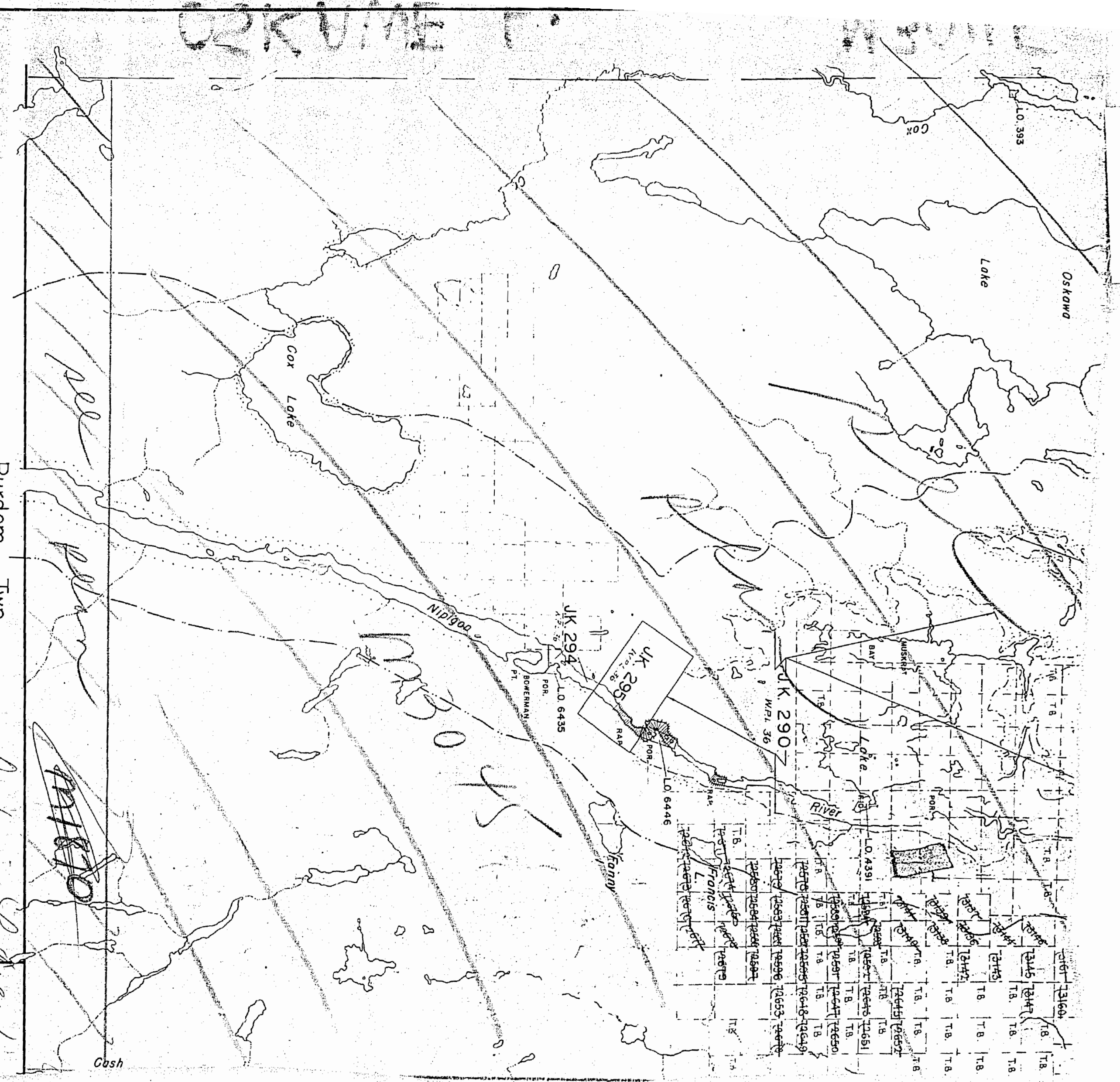
Temporary reservation limits for policing purposes
dated 2nd. March, 1949. File No. 129479
P.C. Dwg. No. 82s58 L.O. 6640

Highway No. 11, from Dept. of Highways
Plan No. P2544-21 & P2544-22. 200' R/W
by order in Council Nov 9th. 1939. 100' on
each side of the centre line of the highway
is vested by the Dept. of Highways.
File 121757.

Virgin Falls Development. File 12198,
Flooding Contour 855' from H.E.P.C. plan
32-e-14 dated Apr. 8th. 1925
shown thus: —

Purdum Twp.

M 3075



3045