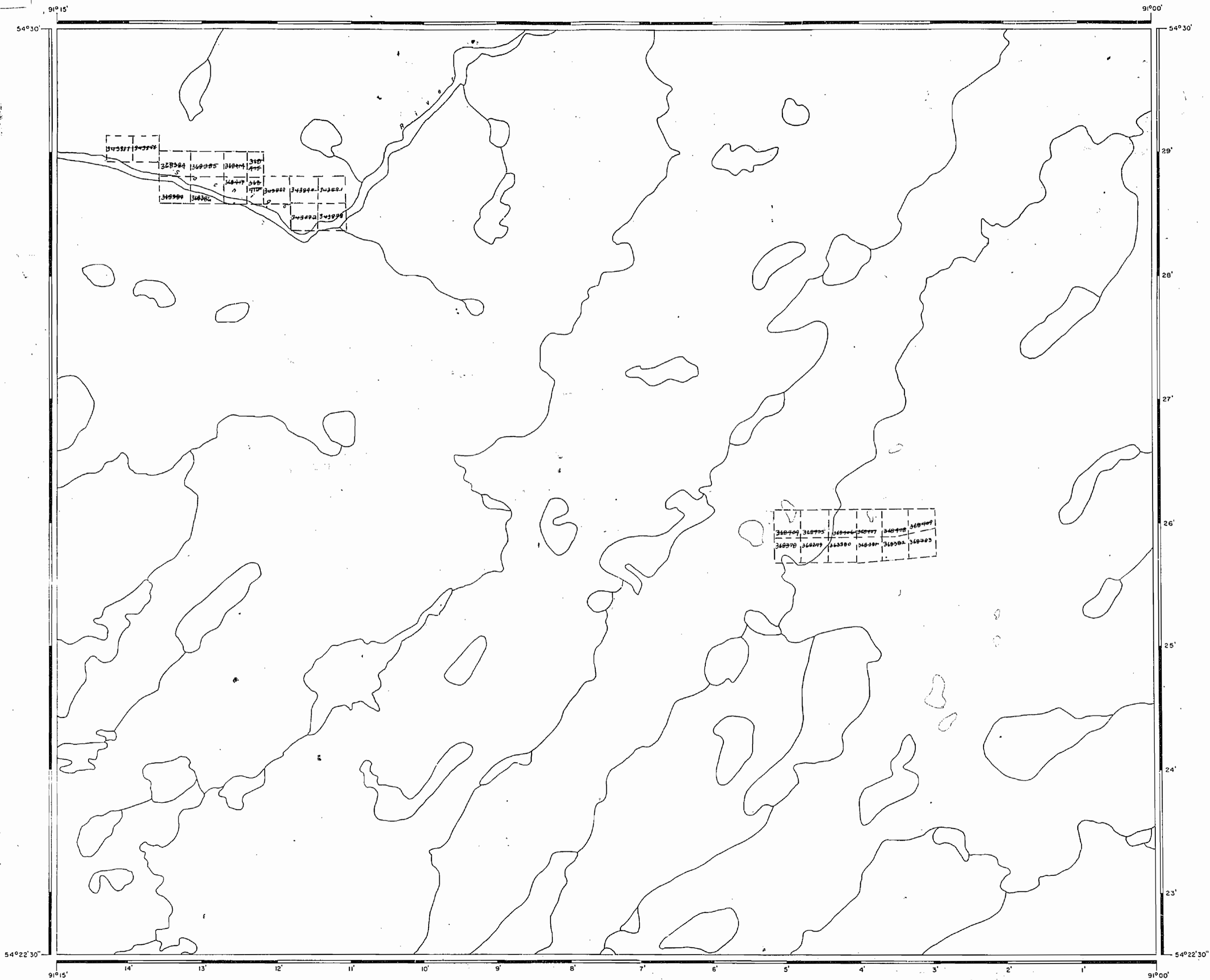


400 surface rights reservation along the shores of all lakes and rivers.

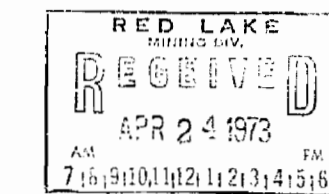
SHERMAN RIVER M.3345

NORTH OF HENDREN LAKE M.3344

LEVITT LAKE M.3324



HENDREN LAKE M.3278



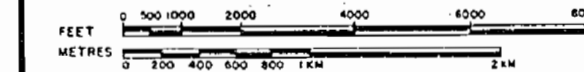
LEGEND

HIGHWAY AND ROUTE No.	
OTHER ROADS	
TRAILS	
SURVEYED LINES:	
TOWNSHIPS, BASE LINES, ETC.	
LOTS, MINING CLAIMS, PARCELS, ETC.	
UNSURVEYED LINES:	
LOT LINES	
PARCEL BOUNDARY	
MINING CLAIMS ETC.	
RAILWAY AND RIGHT OF WAY	
UTILITY LINES	
NON-PERENNIAL STREAM	
FLOODING OR FLOODING RIGHTS	
SUBDIVISION	
ORIGINAL SHORELINE	
MARSH OR MUSKEG	
MINES	

DISPOSITION OF CROWN LANDS

TYPE OF DOCUMENT	SYMBOL
PATENT, SURFACE & MINING RIGHTS	
SURFACE RIGHTS ONLY	
MINING RIGHTS ONLY	
LEASE, SURFACE & MINING RIGHTS	
SURFACE RIGHTS ONLY	
MINING RIGHTS ONLY	
LICENCE OF OCCUPATION	
CROWN LAND SALE	
ORDER-IN-COUNCIL	
RESERVATION	
CANCELLED	
SAND & GRAVEL	

SCALE: 1 INCH = 40 CHAINS



ACRES	HECTARES
40	16

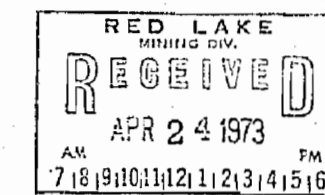
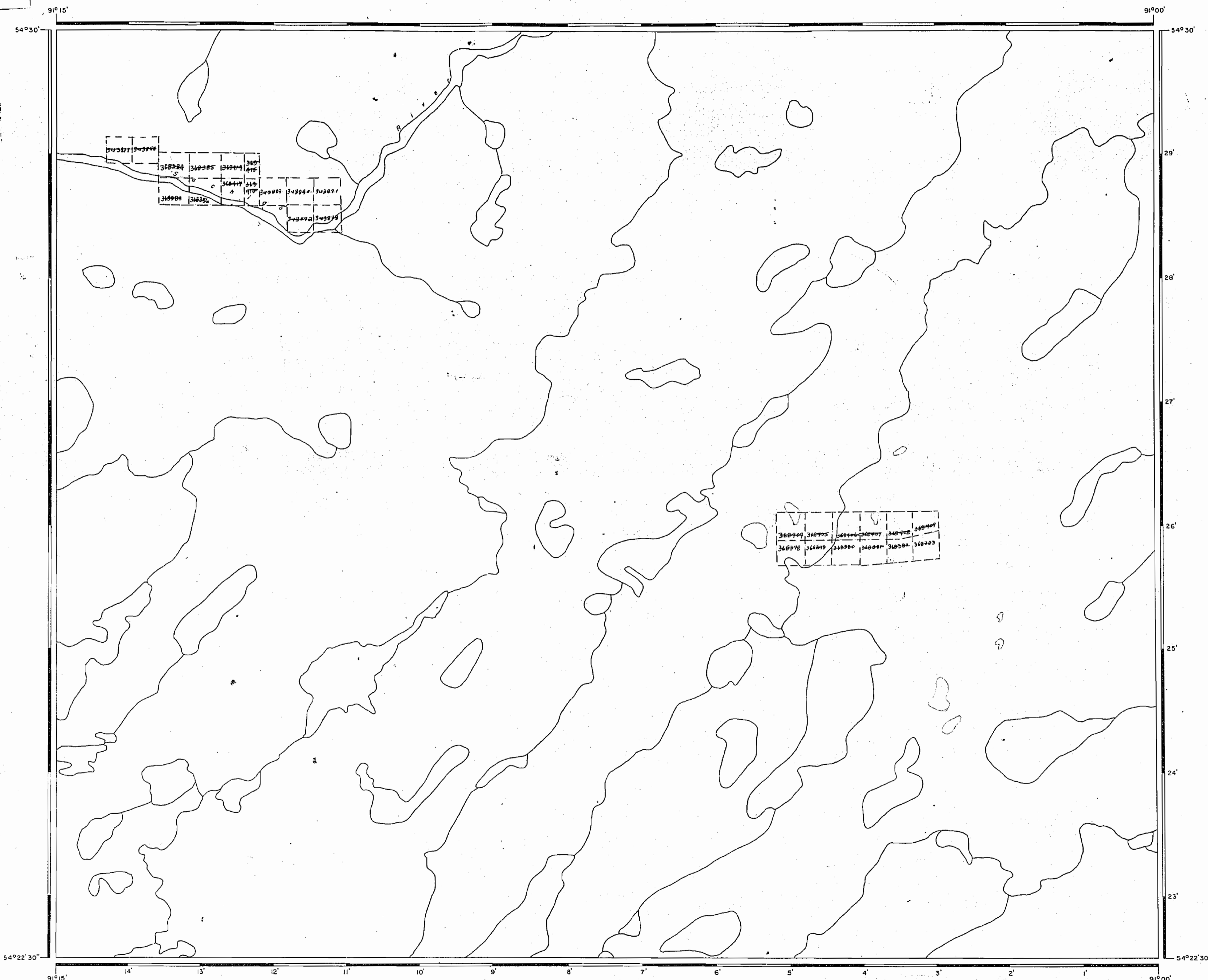
AREA  
**NORTH OF HENDREN LAKE**  
 DISTRICT  
 KENORA (PATRICIA PORTION)  
 MINING DIVISION  
 RED LAKE

Ministry of Natural Resources  
 Ontario Surveys and Mapping Branch

Date APRIL, 1973 Plan No. M.3344  
 National Topographical Series 53 J 6

400' surface rights reservation along the shores of all lakes and rivers.

SHERMAN RIVER M.3345

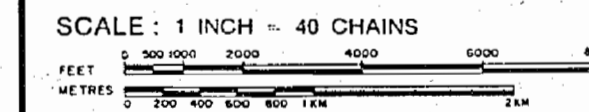


LEGEND

- HIGHWAY AND ROUTE No.
- OTHER ROADS
- TRAILS
- SURVEYED LINES:
  - TOWNSHIPS, BASE LINES, ETC.
  - LOTS, MINING CLAIMS, PARCELS, ETC.
- UNSURVEYED LINES:
  - LOT LINES
  - PARCEL BOUNDARY
  - MINING CLAIMS ETC.
- RAILWAY AND RIGHT OF WAY
- UTILITY LINES
- NON-PERENNIAL STREAM
- FLOODING OR FLOODING RIGHTS
- SUBDIVISION
- ORIGINAL SHORELINE
- MARSH OR MUSKEG
- MINES

DISPOSITION OF CROWN LANDS

TYPE OF DOCUMENT	SYMBOL
PATENT, SURFACE & MINING RIGHTS	
" SURFACE RIGHTS ONLY	
" MINING RIGHTS ONLY	
LEASE, SURFACE & MINING RIGHTS	
" SURFACE RIGHTS ONLY	
" MINING RIGHTS ONLY	
LICENCE OF OCCUPATION	
CROWN LAND SALE	C.S.
ORDER-IN-COUNCIL	OC
RESERVATION	
CANCELLED	
SAND & GRAVEL	



ACRES	HECTARES
40	16

AREA  
**NORTH OF HENDREN LAKE**  
 DISTRICT  
 KENORA (PATRICIA PORTION)  
 MINING DIVISION  
 RED LAKE

Ministry of Natural Resources  
 Ontario Surveys and Mapping Branch  
 Date APRIL, 1973  
 National Topographical Series 53 J 6  
**M.3344**

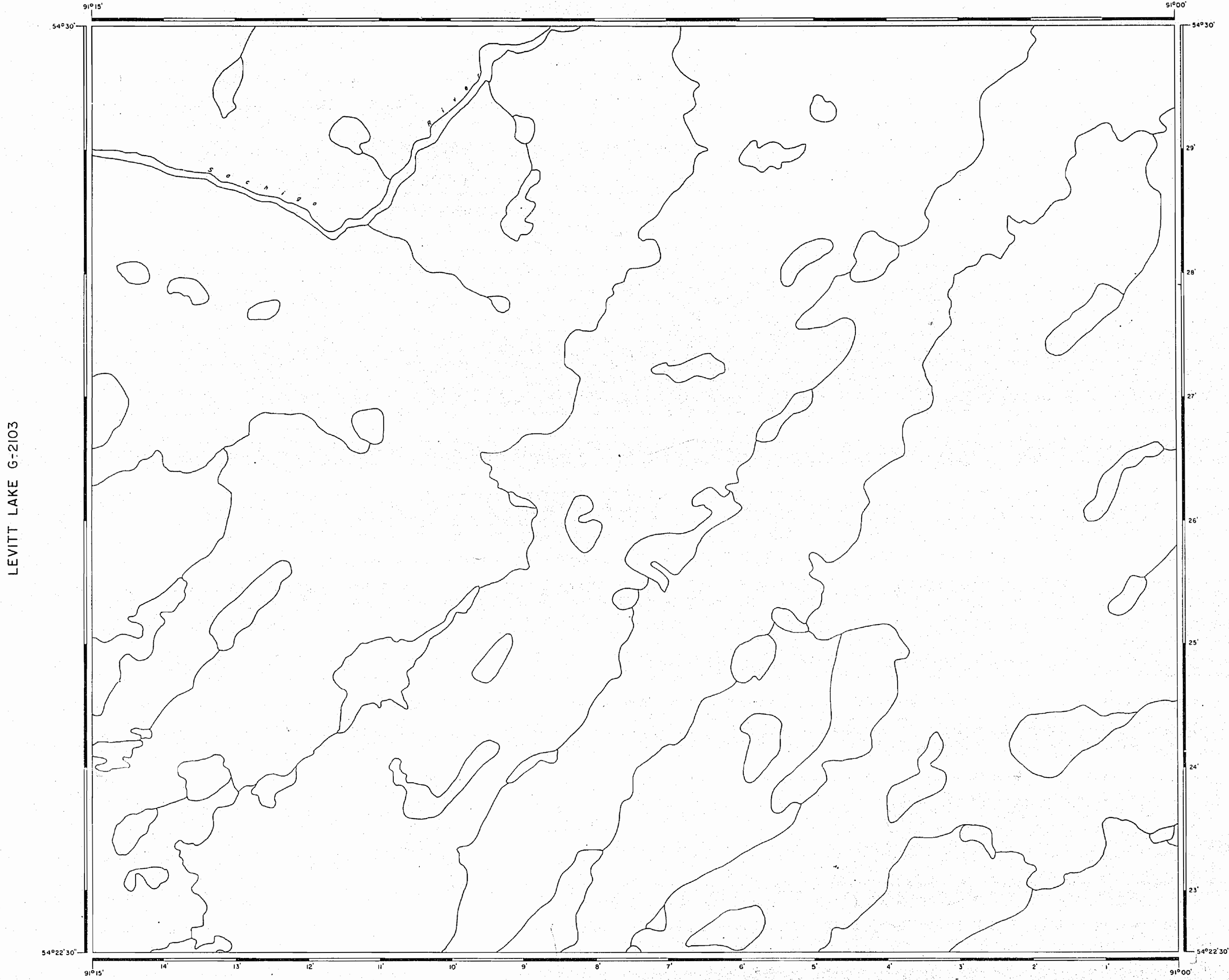
HENDREN LAKE M.3278

**REFERENCES**

**AREAS WITHDRAWN FROM DISPOSITION**

M.R.O. - MINING RIGHTS ONLY
S.R.O. - SURFACE RIGHTS ONLY
M.+S. - MINING AND SURFACE RIGHTS
Description    Order No.    Date    Disposition    File

**SHERMAN RIVER G-2208**



LEVITT LAKE G-2103

**HENDREN LAKE G-2064**

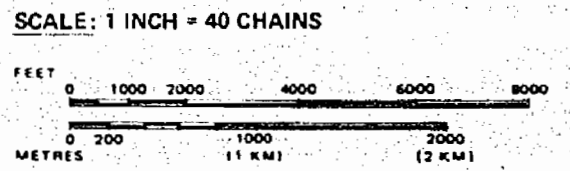
**LEGEND**

- HIGHWAY AND ROUTE No.
- OTHER ROADS
- TRAILS
- SURVEYED LINES:
  - TOWNSHIPS, BASE LINES, ETC.
  - LOTS, MINING CLAIMS, PARCELS, ETC.
- UNSURVEYED LINES:
  - LOT LINES
  - PARCEL BOUNDARY
  - MINING CLAIMS ETC.
- RAILWAY AND RIGHT OF WAY
- UTILITY LINES
- NON-PERENNIAL STREAM
- FLOODING OR FLOODING RIGHTS
- SUBDIVISION OR COMPOSITE PLAN RESERVATIONS
- ORIGINAL SHORELINE
- MARSH OR MUSKEG
- MINES
- TRAVERSE MONUMENT

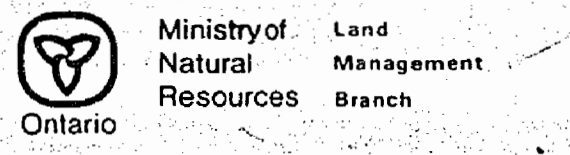
**DISPOSITION OF CROWN LANDS**

TYPE OF DOCUMENT	SYMBOL
PATENT, SURFACE & MINING RIGHTS	
" SURFACE RIGHTS ONLY	
" MINING RIGHTS ONLY	
LEASE, SURFACE & MINING RIGHTS	
" SURFACE RIGHTS ONLY	
" MINING RIGHTS ONLY	
LICENCE OF OCCUPATION	
ORDER-IN-COUNCIL	
RESERVATION	
CANCELLED	
SAND & GRAVEL	

NOTE: MINING RIGHTS IN PARCELS PATENTED PRIOR TO MAY 6, 1913, VESTED IN ORIGINAL PATENTEE BY THE PUBLIC LANDS ACT, R.S.O. 1970, CHAP. 360, SEC. 43, SUBSEC. 1.



AREA **NORTH OF HENDREN LAKE**  
 M.N.R. ADMINISTRATIVE DISTRICT  
**SIoux LOOKOUT**  
 MINING DIVISION  
**RED LAKE**  
 LAND TITLES / REGISTRY DIVISION  
**KENORA (PATRICIA PORTION)**



Date JANUARY, 1984    Number **G-2506**