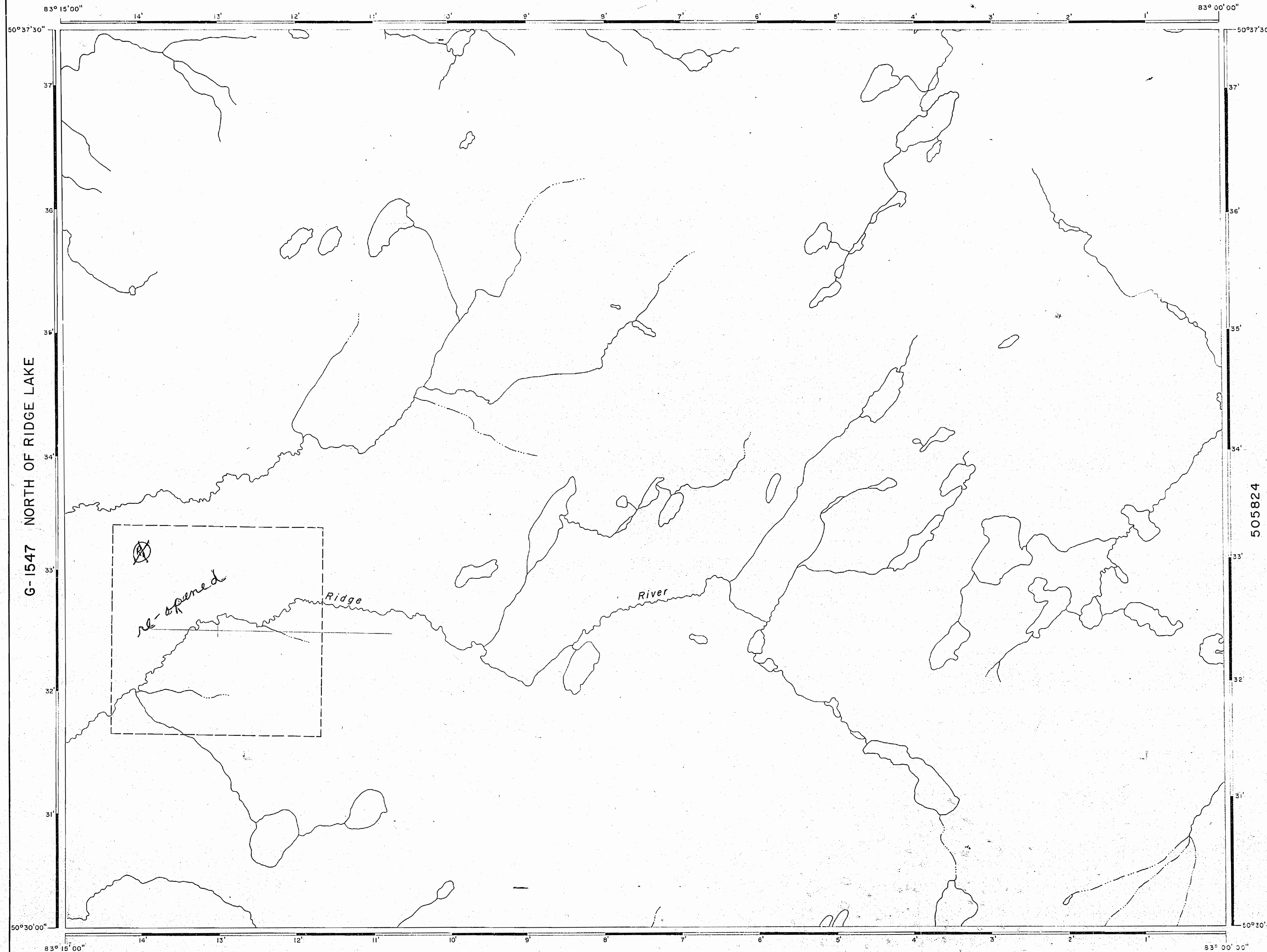


EAST OF CRAWFORD LAKE G-1472



G-1547 NORTH OF RIDGE LAKE

505824

MARTISON LAKE G-1725

AREAS WITHDRAWN FROM DISPOSITION

| Description | Order No. | Date | Disposition | File |
|-------------|-----------|--------|-------------|------|
| (R) | NRO 66/84 | MAR/84 | H+S | |
| (X) | NRO 86/84 | | | |

LEGEND

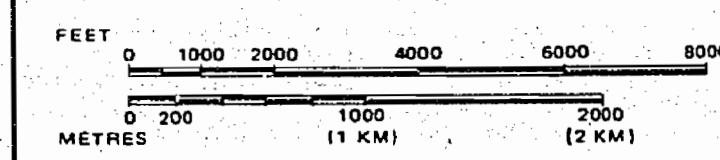
| | |
|------------------------------------|--|
| HIGHWAY AND ROUTE No. | |
| OTHER ROADS | |
| TRAILS | |
| SURVEYED LINES: | |
| TOWNSHIPS, BASE LINES, ETC. | |
| LOTS, MINING CLAIMS, PARCELS, ETC. | |
| UNSURVEYED LINES: | |
| LOT LINES | |
| PARCEL BOUNDARY | |
| MINING CLAIMS ETC. | |
| RAILWAY AND RIGHT OF WAY | |
| UTILITY LINES | |
| NON-PERENNIAL STREAM | |
| FLOODING OR FLOODING RIGHTS | |
| SUBDIVISION OR COMPOSITE PLAN | |
| RESERVATIONS | |
| ORIGINAL SHORELINE | |
| MARSH OR MUSKEG | |
| MINES | |
| TRAVERSE MONUMENT | |

DISPOSITION OF CROWN LANDS

| TYPE OF DOCUMENT | SYMBOL |
|---------------------------------|--------|
| PATENT, SURFACE & MINING RIGHTS | |
| " SURFACE RIGHTS ONLY | |
| " MINING RIGHTS ONLY | |
| LEASE, SURFACE & MINING RIGHTS | |
| " SURFACE RIGHTS ONLY | |
| " MINING RIGHTS ONLY | |
| LICENCE OF OCCUPATION | |
| ORDER-IN-COUNCIL | |
| RESERVATION | |
| CANCELLED | |
| SAND & GRAVEL | |

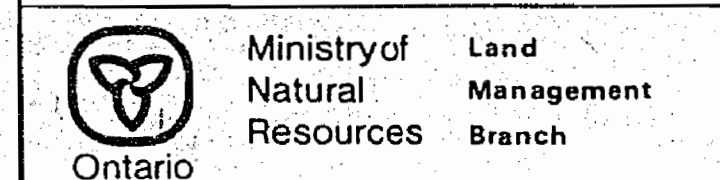
NOTE: MINING RIGHTS IN PARCELS PATENTED PRIOR TO MAY 6, 1913, VESTED IN ORIGINAL PATENTEE BY THE PUBLIC LANDS ACT, R.S.O. 1970, CHAP. 380, SEC. 63, SUBSEC. 1.

SCALE: 1 INCH = 40 CHAINS



TOWNSHIP

AREA
NORTH OF MARTISON LAKE
 M.N.R. ADMINISTRATIVE DISTRICT
MOOSONEE
 MINING DIVISION
PORCUPINE
 LAND TITLES / REGISTRY DIVISION
COCHRANE

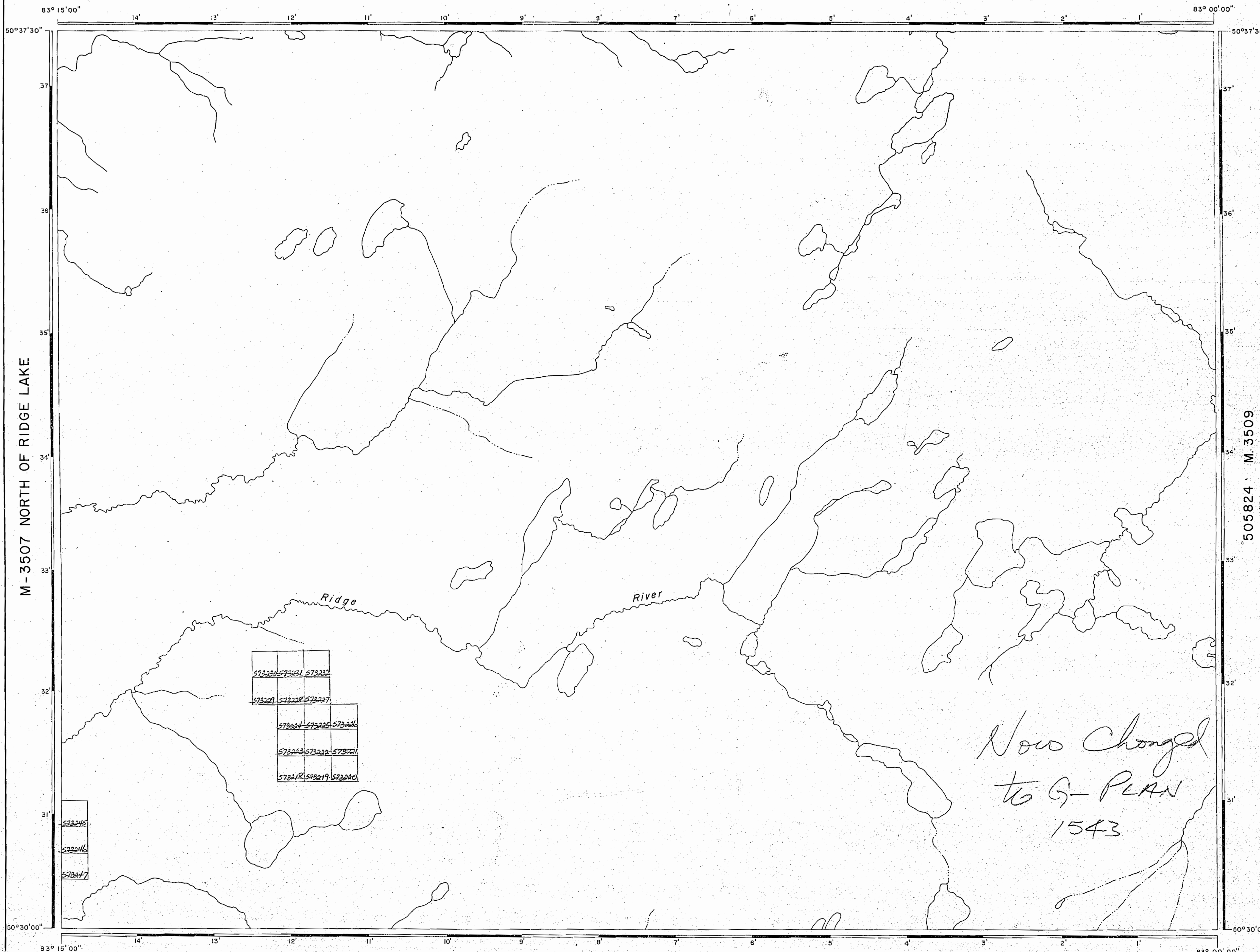


Date: DECEMBER, 1982
 Number: **G-1543**

REFERENCES

400' surface rights reservation along the shores of all lakes and rivers.

EAST OF CRAWFORD LAKE M. 3523



M-3507 NORTH OF RIDGE LAKE

505824 M. 3509

Replaced OCT 29/83

Now changed
to G-PLAN
1543

LEGEND

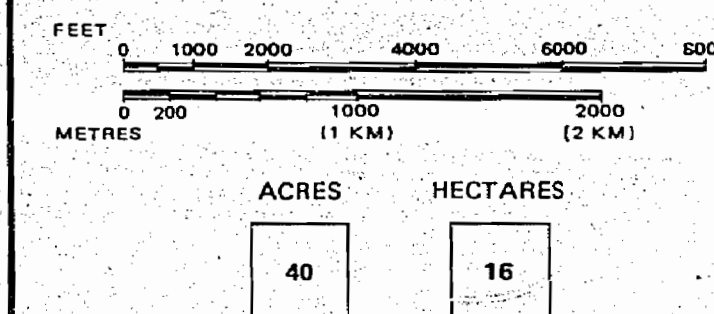
| | |
|------------------------------------|--|
| HIGHWAY AND ROUTE No. | |
| OTHER ROADS | |
| TRAILS | |
| SURVEYED LINES: | |
| TOWNSHIPS, BASE LINES, ETC. | |
| LOTS, MINING CLAIMS, PARCELS, ETC. | |
| UNSURVEYED LINES: | |
| LOT LINES | |
| PARCEL BOUNDARY | |
| MINING CLAIMS ETC. | |
| RAILWAY AND RIGHT OF WAY | |
| UTILITY LINES | |
| NON-PERENNIAL STREAM | |
| FLOODING OR FLOODING RIGHTS | |
| SUBDIVISION OR COMPOSITE PLAN | |
| RESERVATIONS: | |
| ORIGINAL SHORELINE | |
| MARSH OR MUSKEG | |
| MINES | |
| TRAVERSE MONUMENT | |

DISPOSITION OF CROWN LANDS

| TYPE OF DOCUMENT | SYMBOL |
|---------------------------------|--------|
| PATENT, SURFACE & MINING RIGHTS | |
| " SURFACE RIGHTS ONLY | |
| " MINING RIGHTS ONLY | |
| LEASE, SURFACE & MINING RIGHTS | |
| " SURFACE RIGHTS ONLY | |
| " MINING RIGHTS ONLY | |
| LICENCE OF OCCUPATION | |
| ORDER-IN-COUNCIL | |
| RESERVATION | |
| CANCELLED | |
| SAND & GRAVEL | |

NOTE: MINING RIGHTS IN PARCELS PATENTED PRIOR TO MAY 6, 1912, VESTED IN ORIGINAL PATENTEES BY THE PUBLIC LANDS ACT, R.S.O. 1970, CHAP. 390, SEC. 63, SUBSEC. 1.

SCALE: 1 INCH = 40 CHAINS

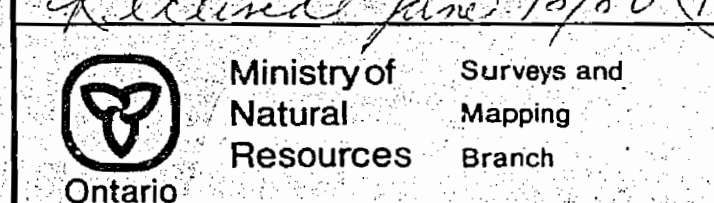


AREA NORTH OF MARTISON LAKE

DISTRICT COCHRANE

MINING DIVISION

PORCUPINE



Date MAY 30th, 1980

Plan No.

National Topographic Series

M-3508

M-2816 MARTISON LAKE