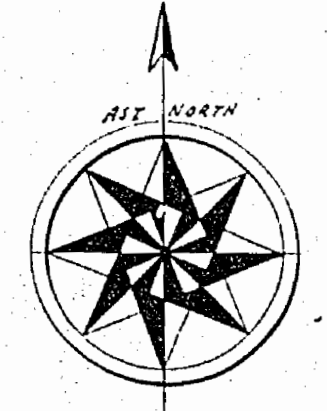


1857

PEARSON T.P.

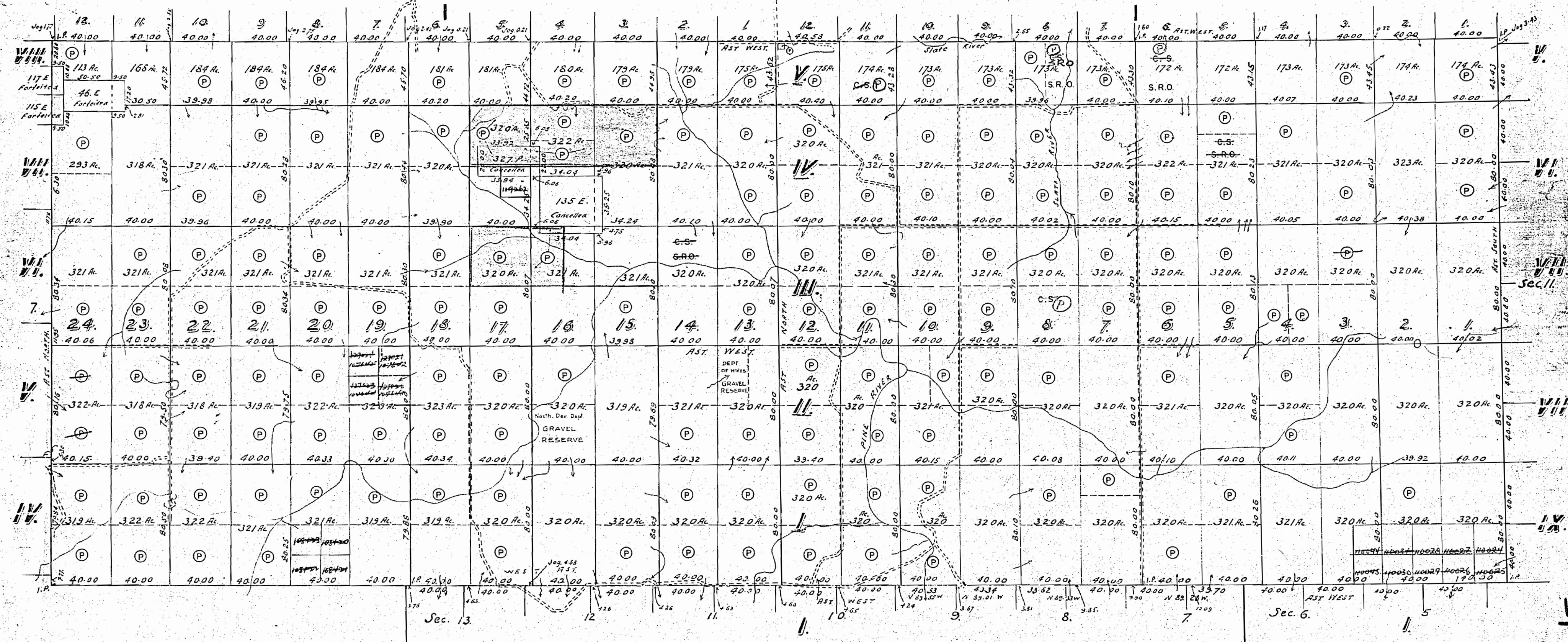
DISTRICT OF THUNDER BAY.
Port Arthur MINING DIVISION

Scale: 40 Chains = 1 Inch.



GILLIES T.P.

SCOBLE T.P.



DEVON T.P.

PARDEE T.P.

CROOKS T.P.

See Land Roll for
135 E & 327 P for
status.
- P
- Crown

1961

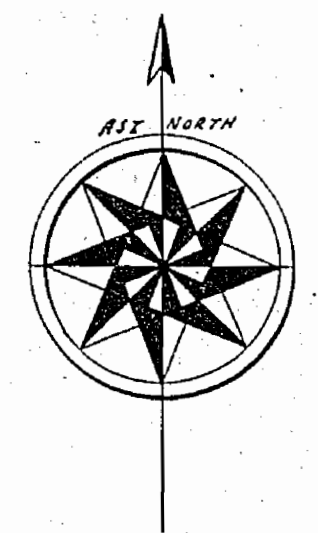
M1857

PEARSON T.P.

DISTRICT OF THUNDER BAY.

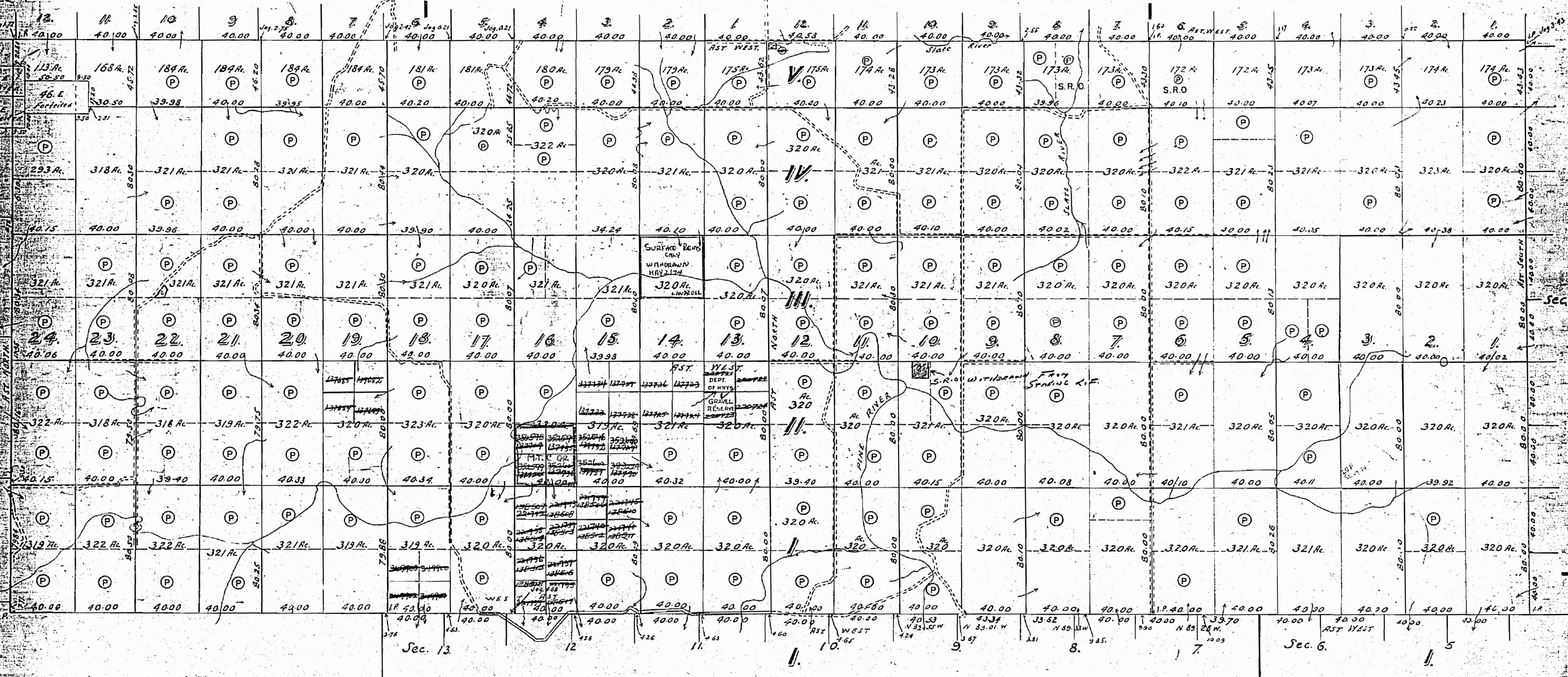
Port Arthur MINING DIVISION

Scale: 40 Chains = 1 Inch.



GILLIES T.P.

SCOBLE T.P.



FRALIGHT T.P.

BLAKE T.P.

DEVON T.P.

PARDEE T.P.

CROOKS T.P.

1968

M1857

1857

M.1857

ONTARIO

MINISTRY OF NATURAL RESOURCES

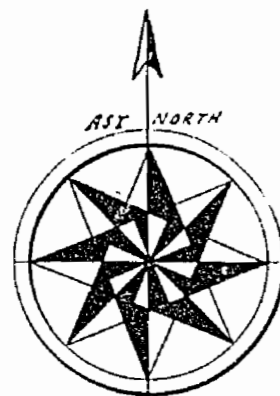
SURVEYS AND MAPPING BRANCH

PEARSON T.P.

DISTRICT OF THUNDER BAY.

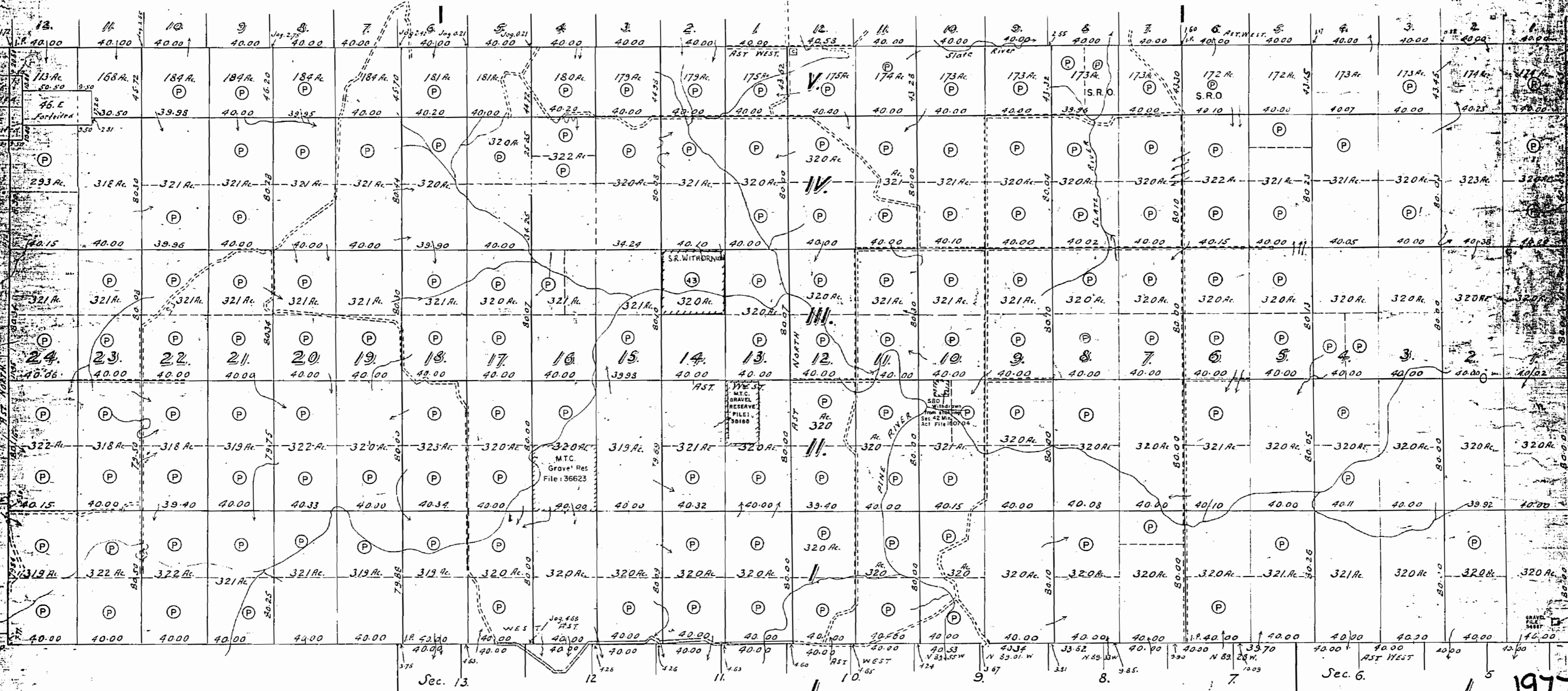
THUNDER BAY MINING DIVISION

Scale: 40 Chains = 1 Inch.



GILLIES T.P.

SCOBLE T.P.



DEVON T.P.

PARDEE T.P.

CROOKS T.P.

Areas withdrawn from staking under Section 43 of the Mining Act (R.S.O. 1973)

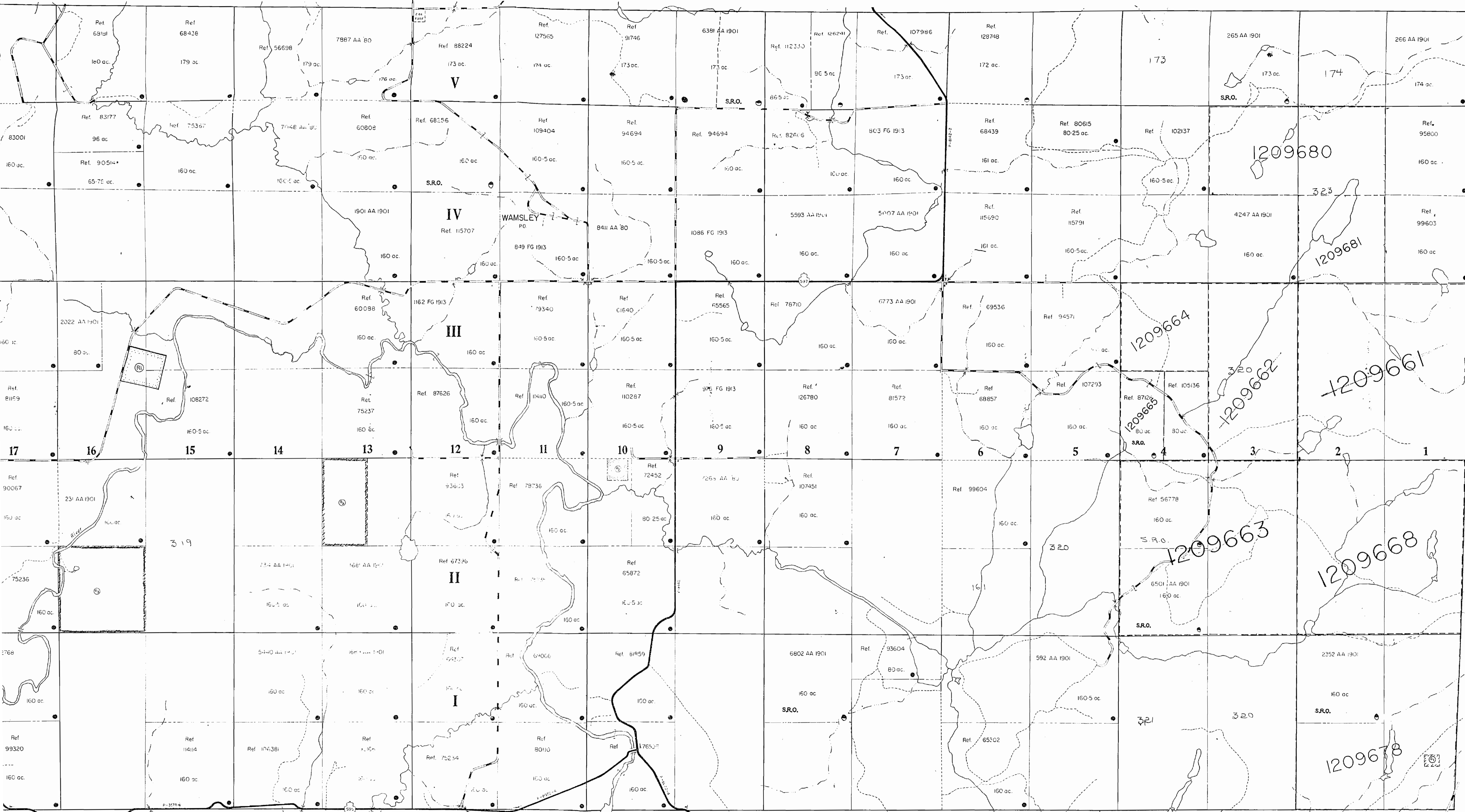
Order No	File	Date	Disposition
43	M.24	12/5/98	2/5/74 S.R.O.

Improved Roads surveyed under instructions by R.S. Kirkup, O.L.S. 1932 shown thus. =====

A.H. Macdougall O.L.S. 1904.

M.1857
Department of Surveys
Parliament Buildings
December 1934. Toronto, Ontario, Canada

SCOBLE G-637



PARDEE G-681

CROOKS G-648

REFERENCES

AREAS WITHDRAWN FROM DISPOSITION
 S.R. - SURFACE RIGHTS M.R. - MINING RIGHTS
 S.R.O. - SURFACE RIGHTS ONLY
 Description Order No. Date Disposition File
 © 1998 AND SURFACE RIGHTS WITHDRAWN FROM STAKING ORDER WITH 25/194/1998
 "LTD. SURFACE TO PROTECT "HONEY" RESERVE SERVICE #127"
 Sec. 43, Res. NCR W/681 2/22/81 S.R. 188542

Thunder Bay
 Mining Division
 AUG 27 1998
 RECEIVED

LEGEND

- HIGHWAY AND ROUTE No.
- OTHER ROADS
- TRAILS
- SURVEYED LINES
 TOWNSHIPS, BASE LINES, ETC.
- LOTS, MINING CLAIMS, PARCELS ETC.
- UNSURVEYED LINES
 LOT LINES
- PARCEL BOUNDARY
 MINING CLAIMS ETC.
- RAILWAY AND RIGHT OF WAY
- UTILITY LINES
- NON-PERENNIAL STREAM
- FLOODING OR FLOODING RIGHTS
- SUBDIVISION OR COMPOSITE PLAN
- RESERVATIONS
- ORIGINAL SHORELINE
- MARSH OR MUSKEG
- MINES
- TRAVERSE MONUMENT

DISPOSITION OF CROWN LANDS

TYPE OF DOCUMENT	SYMBOL
PATENT, SURFACE & MINING RIGHTS	
" SURFACE RIGHTS ONLY	
" MINING RIGHTS ONLY	
LEASE, SURFACE & MINING RIGHTS	
" SURFACE RIGHTS ONLY	
" MINING RIGHTS ONLY	
LICENCE OF OCCUPATION	
ORDER IN COUNCIL	
RESERVATION	
CANCELLED	
SAND & GRAVEL	

NOTE: MINING RIGHTS IN PARCELS PATENTED PRIOR TO MAY 6 1913, VESTED IN ORIGINAL PATENTEE BY THE PUBLIC LANDS ACT, R.S.O. 1910, CHAP. 380, SEC. 63, SUBSEC. 1

SCALE: 1 INCH : 20 CHAINS

TOWNSHIP
PEARSON
 M.N.R. ADMINISTRATIVE DISTRICT
THUNDER BAY
 MINING DIVISION
THUNDER BAY
 LAND TITLES / REGISTRY DIVISION
THUNDER BAY

Ministry of Natural Resources
 Land Management Branch
 Ontario
 June 22 1998
 APRIL 1982

G-682

#682

1904

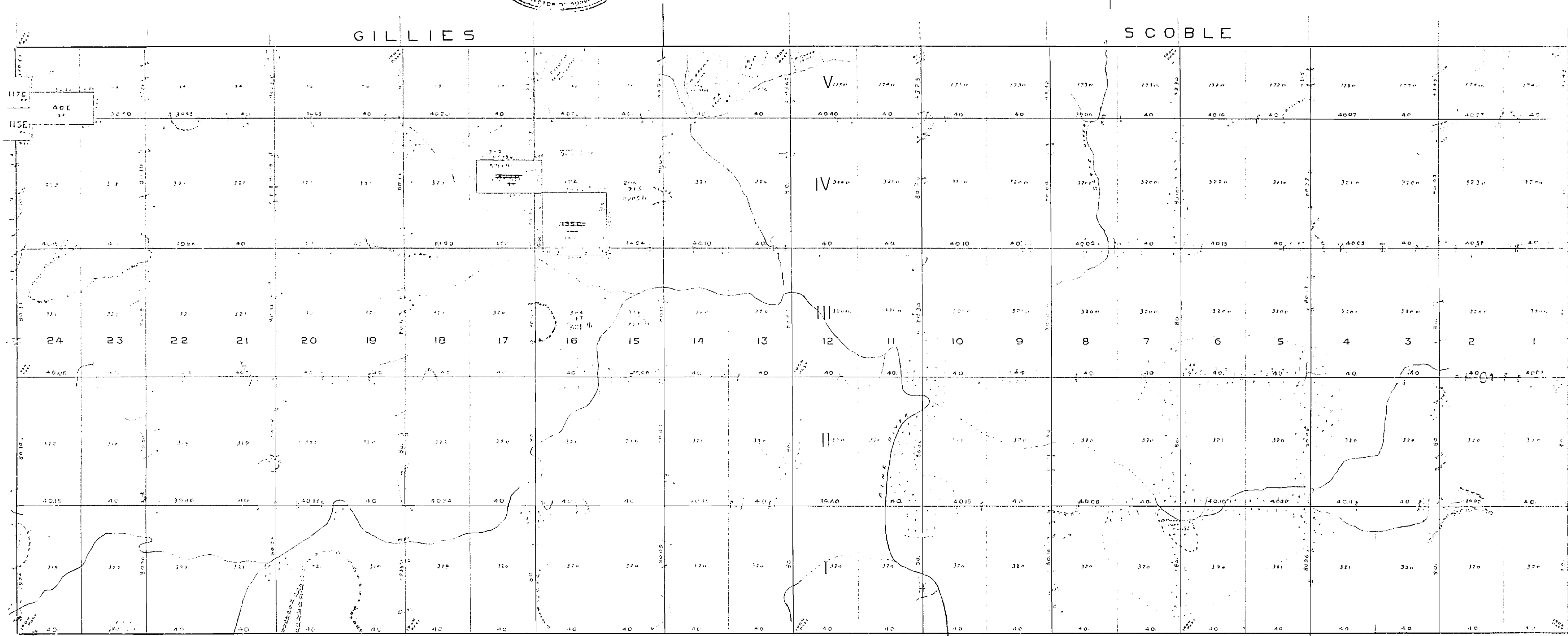
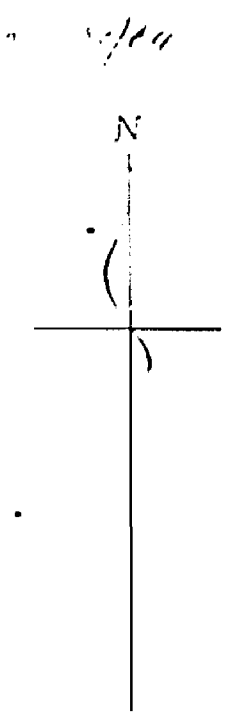
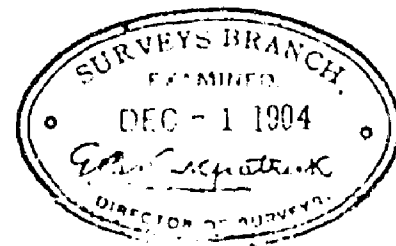
PEARSON

DISTRICT OF THUNDER BAY

ALLIANCE TOWNSHIP

1904

Scale 40 chains to an inch

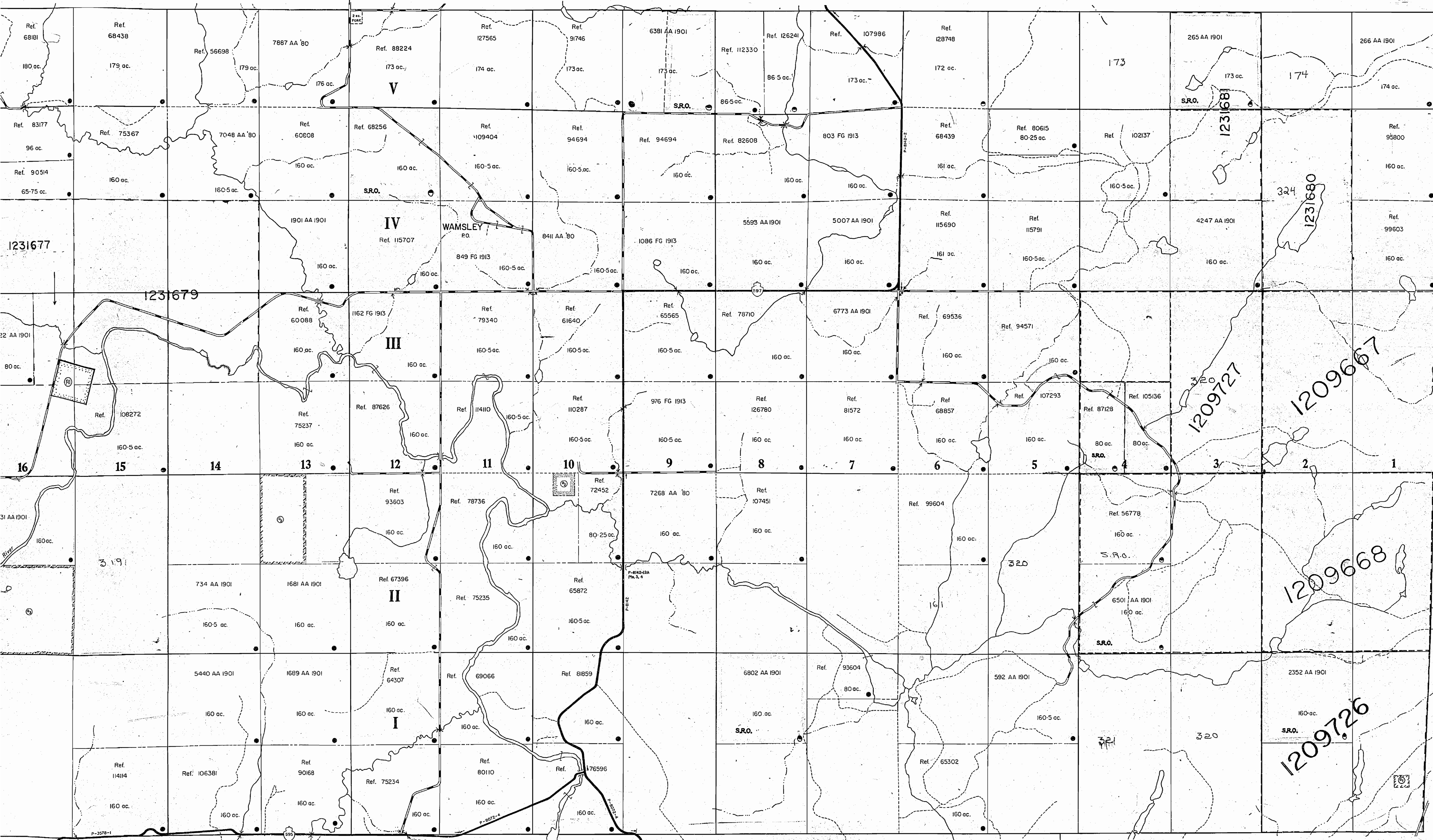


Returned to Sales & Free Grants Dec 16 1904 JHT
Copied for Local Master Dec 14 1904 DSB
Office 17 1904
Tracing made for Agent Summary 18 1904

AREA	
LOTS	= 34.657
MINING LOCATIONS	= 558
TOTAL	35.015

A.H. Macdonnell O.S.
Per [Signature]
Nov 25th 1904

SCOBLE G-687



REFERENCES

AREAS WITHDRAWN FROM DISPOSITION

S.R. - SURFACE RIGHTS		M.R. - MINING RIGHTS	
Description	Order No.	Date	Disposition
MINING AND SURFACE RIGHTS WITHDRAWN FROM STAMPS ORDER WITH 23/84 MNR DATED 06/05/84 TO PROTECT FOREST RESEARCH SAMPLE PLOTS			
Sec. 43	Res. HCR W.36/81	27/2/81	S.R. 188542

LEGEND

HIGHWAY AND ROUTE No.	
OTHER ROADS	
TRAILS	
SURVEYED LINES:	
TOWNSHIPS, BASE LINES, ETC.	
LOTS, MINING CLAIMS, PARCELS, ETC.	
UNSURVEYED LINES:	
LOT LINES	
PARCEL BOUNDARY	
MINING CLAIMS ETC.	
RAILWAY AND RIGHT OF WAY	
UTILITY LINES	
NON-PERENNIAL STREAM	
FLOODING OR FLOODING RIGHTS	
SUBDIVISION OF COMPOSITE PLAN	
RESERVATIONS	
ORIGINAL SHORELINE	
MARSH OR MUSKEG	
MINES	
TRAVERSE MONUMENT	

DISPOSITION OF CROWN LANDS

TYPE OF DOCUMENT	SYMBOL
PATENT, SURFACE & MINING RIGHTS	
" SURFACE RIGHTS ONLY	
" MINING RIGHTS ONLY	
LEASE, SURFACE & MINING RIGHTS	
" SURFACE RIGHTS ONLY	
" MINING RIGHTS ONLY	
LICENCE OF OCCUPATION	
ORDER-IN-COUNCIL	
RESERVATION	
CANCELLED	
SAND & GRAVEL	

NOTE: MINING RIGHTS IN PARCELS PATENTED PRIOR TO MAY 6 1913, VESTED IN ORIGINAL PATENTEE BY THE PUBLIC LANDS ACT, R.S.O. 1910, CHAP. 380, SEC. 63, SUBSEC. 1.

SCALE: 1 INCH : 20 CHAINS

TOWNSHIP
PEARSON
 M.N.R. ADMINISTRATIVE DISTRICT
THUNDER BAY
 MINING DIVISION
THUNDER BAY
 LAND TITLES / REGISTRY DIVISION
THUNDER BAY

Ministry of Land Management
 Natural Resources Branch
 Ontario

Date: APRIL 1982
 Number: 18857
G-682

PARDEE G-681

F-1

CROOKS G-648

BLAKE G-645

REFERENCES

NOTE

LOT AND CONCESSION LINES SHOWN HEREON ARE PROJECTED FROM THE BEST INFORMATION AVAILABLE BUT THEIR TRUE POSITION IS NOT GUARANTEED.

FOR LEGAL SURVEY PURPOSES CONSULT THE ORIGINAL PLAN AND FIELD NOTES OF RECORD IN THE MINISTRY OF NATURAL RESOURCES AT TORONTO.

AGES SHOWN FOR ORIENTED LOTS ACCORDANCE WITH AREA GRANTED.

SAND & GRAVEL

GRAVEL FILE 34667
MTC GRAVEL FILE 35165
36623

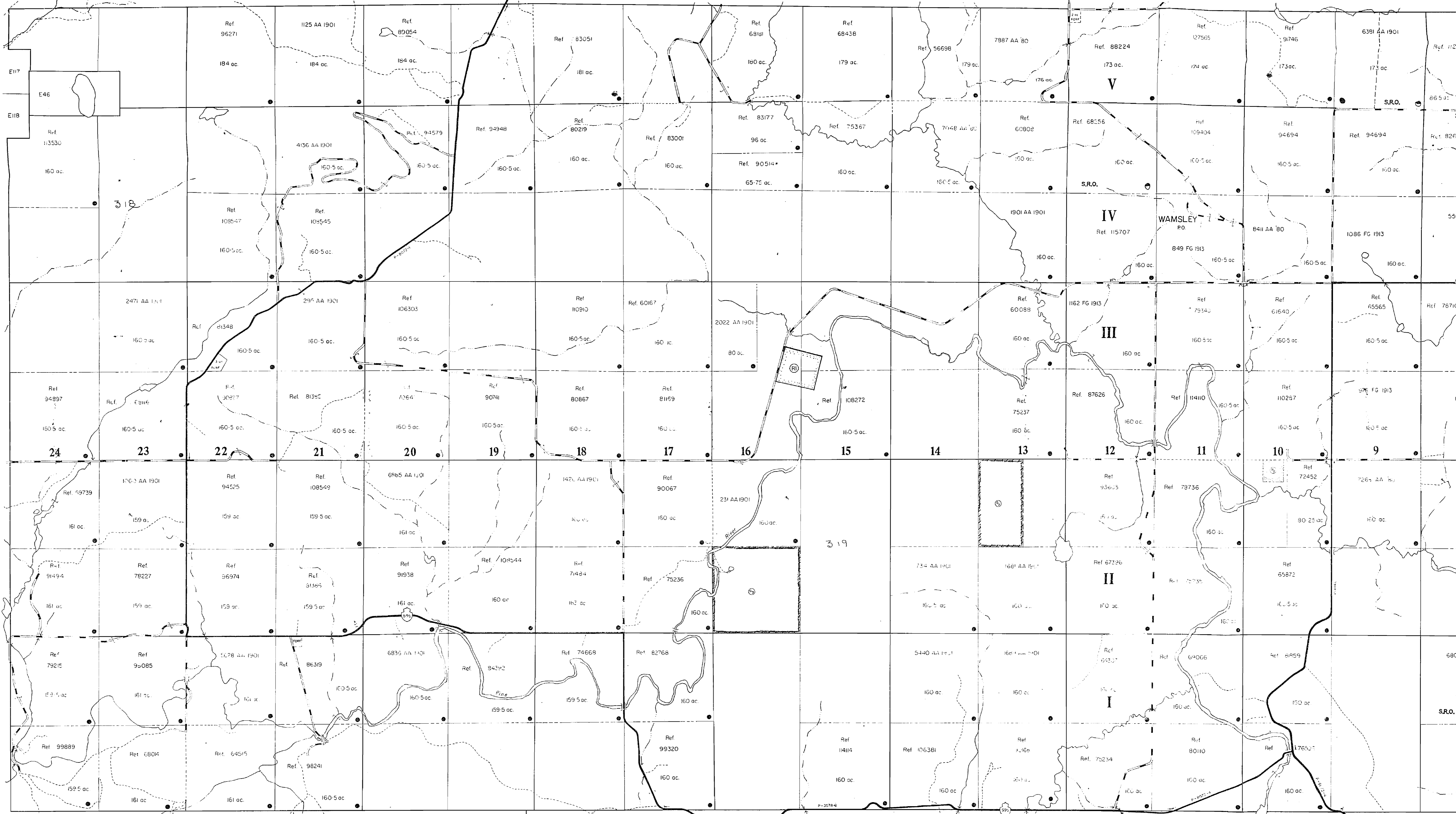
THE INFORMATION THAT APPEARS ON THIS MAP HAS BEEN COMPILED FROM VARIOUS SOURCES AND ACCURACY IS NOT GUARANTEED. THOSE WISHING TO STAKE MINING CLAIMS SHOULD CONSULT WITH THE MINING RECORDER, MINISTRY OF NORTHERN DEVELOPMENT AND MINES, FOR ADDITIONAL INFORMATION ON THE STATUS OF THE LANDS SHOWN HEREON.

GILLIES G-657

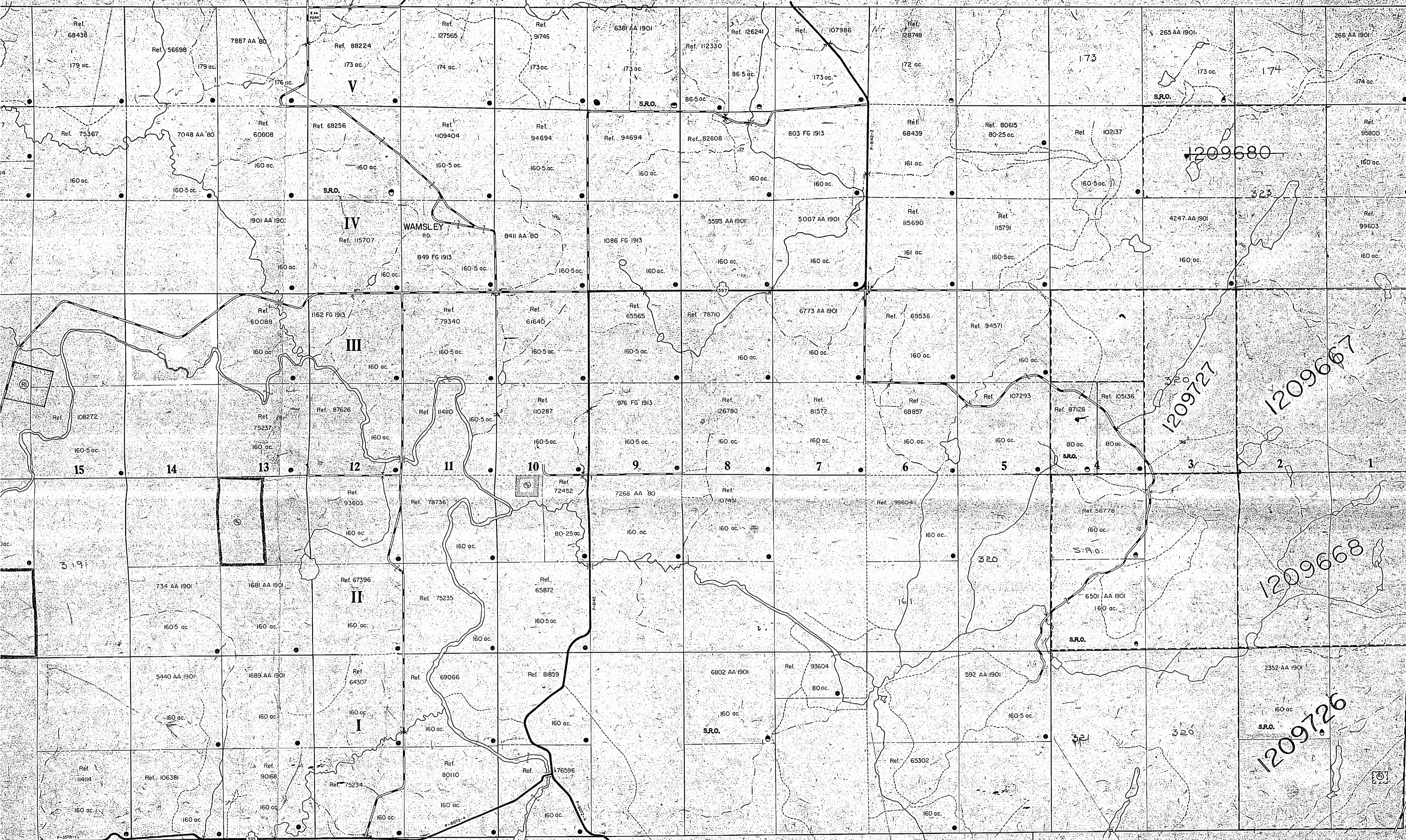
FRALEIGH G-656

DEVON G-650

PARDEE G-681



SCOBLE G-687



PARDEE G-681

CROOKS G-648

AREAS WITHDRAWN FROM DISPOSITION

S.R.O. SURFACE RIGHTS ONLY
 S.R.O. SURFACE RIGHTS ONLY
 Description Order No. Date of Disposition File No.
 (1) LAND AND SURFACE RIGHTS WITHDRAWN FROM STAGGS UNDER VTA 21/24/1984
 (2) 1970 06/09/84 TO PROTECT ENERGY RESOURCES ACT, PL. 111
 (3) Sec. 43 Reg. 1/1/81 27/2/81 1/81 1/85/82

LEGEND

- HIGHWAY AND ROUTE No.
- OTHER ROADS
- TRAILS
- SURVEYED LINES
- TOWNSHIP, BASE LINES, ETC.
- LOTS, MINING CLAIMS, PARCELS, ETC.
- UNSURVEYED LINES
- LOT LINES
- PARCEL BOUNDARY
- MINING CLAIMS ETC.
- RAILWAY AND RIGHT OF WAY
- UTILITY LINES
- NON-PERENNIAL STREAM
- FLOODING OR FLOODING RIGHTS
- SUBDIVISION OR COMPOSITE PLAN
- RESERVATIONS
- ORIGINAL SHORELINE
- MARSH OR MUSKEG
- MINES
- TRAVERSE MONUMENT

DISPOSITION OF CROWN LANDS

TYPE OF DOCUMENT	SYMBOL
PATENT, SURFACE & MINING RIGHTS	●
SURFACE RIGHTS ONLY	○
MINING RIGHTS ONLY	○
LEASE, SURFACE & MINING RIGHTS	○
SURFACE RIGHTS ONLY	○
MINING RIGHTS ONLY	○
LICENCE OF OCCUPATION	○
ORDER IN COUNCIL	○
RESERVATION	○
CANCELLED	○
SAND & GRAVEL	○

NOTE: MINING RIGHTS IN PARCELS PATENTED PRIOR TO MAY 6, 1912, VESTED IN ORIGINAL PATENTEES BY THE PUBLIC LANDS ACT, R.S.O. 1970, CHAP. 380, SEC. 63, SUBSEC. 1.

SCALE: 1" INCH = 20 CHAINS

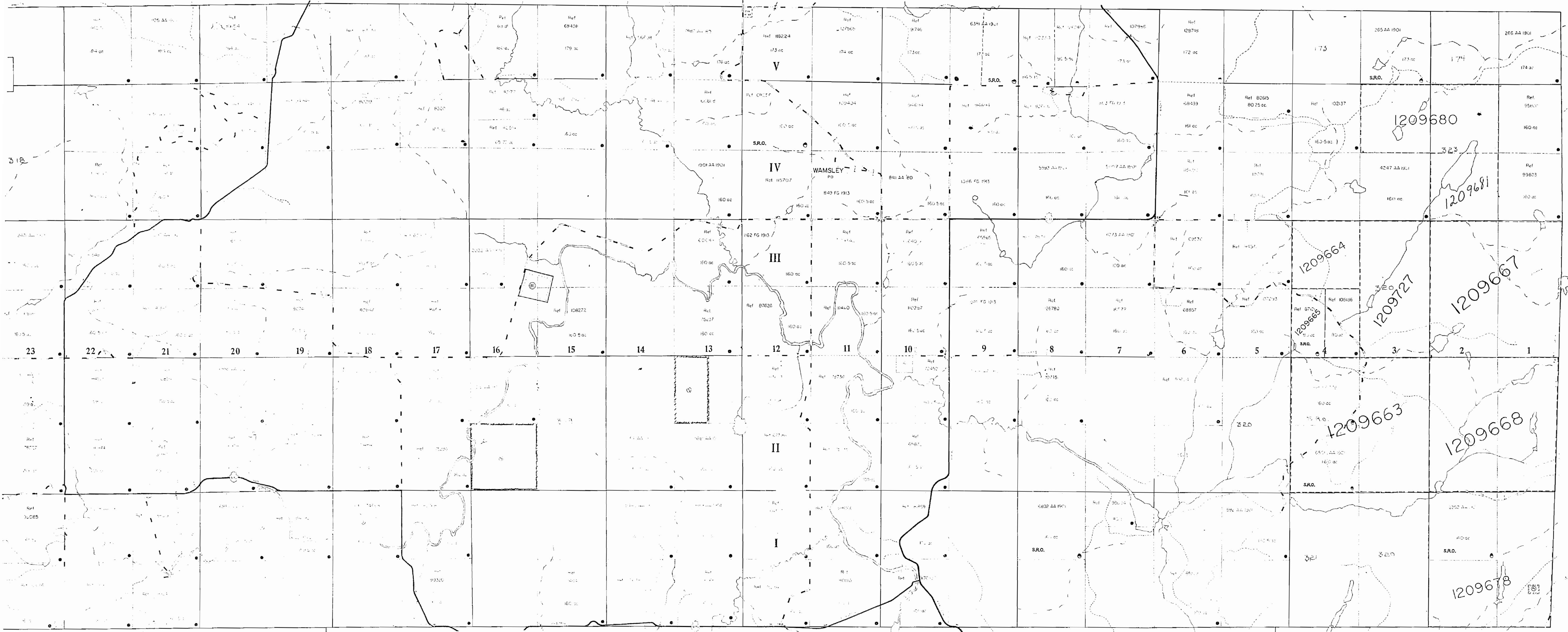
TOWNSHIP
PEARSON
 M.N.R. ADMINISTRATIVE DISTRICT
THUNDER BAY
 MINING DIVISION
THUNDER BAY
 LAND TITLES / REGISTRY DIVISION
THUNDER BAY



APRIL 1982
 G-682

GILLIES G-657

SCOBLE G-687



DEVON G-650

PARDEE G-681

CROOKS G-648

REFERENCES

AREAS WITHDRAWN FROM DISPOSITION

S.R. - SURFACE RIGHTS	M.R. - MINING RIGHTS
S.R.O. - SURFACE RIGHTS ONLY	
Order No.	Date
Disposition	Fee

© 1982 H.M. NOR W/81 27/2/81 S.R. 188542

LEGEND

HIGHWAY AND ROUTE No.	
OTHER ROADS	
TRAILS	
SURVEYED LINES	
TOWNSHIPS, BASE LINES, ETC.	
LOTS, MINING CLAIMS, PARCELS ETC.	
UNSURVEYED LINES	
LOT LINES	
PARCEL BOUNDARY	
MINING CLAIMS ETC.	
RAILWAY AND RIGHT OF WAY	
UTILITY LINES	
NON-PERENNIAL STREAM	
FLOODING OR FLOODING RIGHTS	
SUBDIVISION OF COMPOSITE PLAN	
RESERVATIONS	
ORIGINAL SHORELINE	
MARSH OR MUSKEG	
MINES	
TRAVERSE MONUMENT	

DISPOSITION OF CROWN LANDS

TYPE OF DOCUMENT	SYMBOL
PATENT, SURFACE & MINING RIGHTS	
... SURFACE RIGHTS ONLY	
... MINING RIGHTS ONLY	
LEASE, SURFACE & MINING RIGHTS	
... SURFACE RIGHTS ONLY	
... MINING RIGHTS ONLY	
LICENCE OF OCCUPATION	
ORDER IN COUNCIL	
RESERVATION	
CANCELLED	
SAND & GRAVEL	

NOTE: MINING RIGHTS IN PARCELS PATENTED PRIOR TO MAY 6 1913, VESTED IN ORIGINAL PATENTEE BY THE PUBLIC LANDS ACT, R.S.O. 1910, CHAP. 380, SEC. 63 SUBSEC. 1

SCALE: 1 INCH : 20 CHAINS

TOWNSHIP
PEARSON
 M.H.R. ADMINISTRATIVE DISTRICT
THUNDER BAY
 MINING DIVISION
THUNDER BAY
 LAND TITLES / REGISTRY DIVISION
THUNDER BAY

Ministry of Natural Resources
 Land Management Branch
 Ontario
 Date: APRIL 1982
G-682

BLAKE G-645

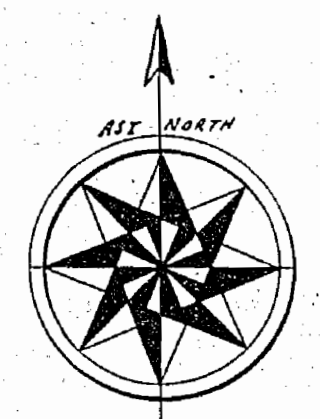
NOV 4, 1996
G-682

PEARSON T.P.

DISTRICT OF THUNDER BAY.

Port Arthur MINING DIVISION

Scale: 40 Chains = 1 Inch.

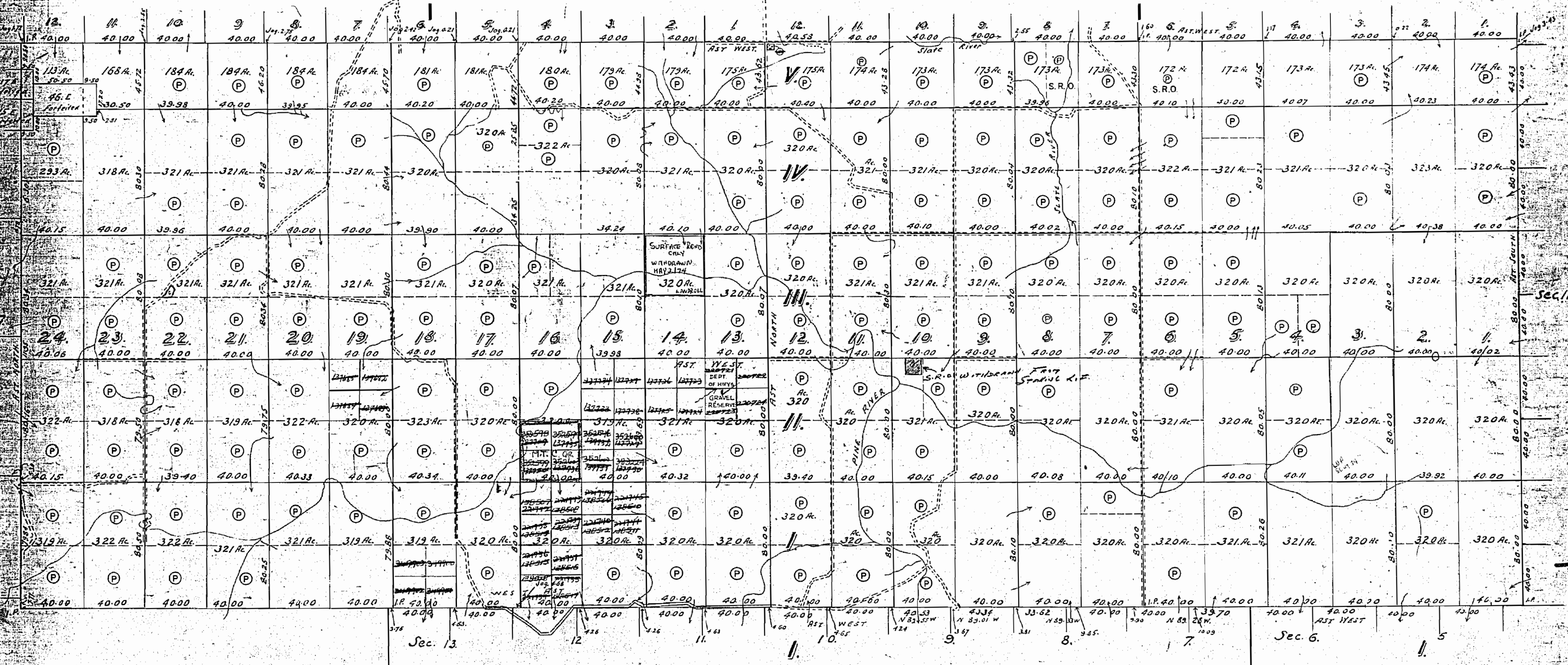


GILLIES T.P.

SCOBLE T.P.

FRALEIGH T.P.

BLAKE T.P.



DEVON T.P.

PARDEE T.P.

CROOKS T.P.

1968

1857

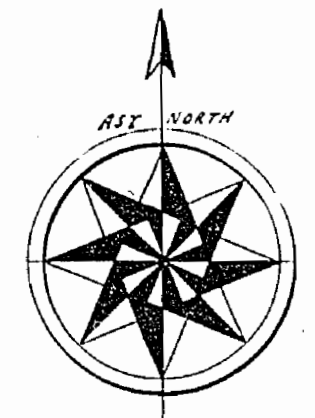
PEARSON T.P.

M.1857

ONTARIO
MINISTRY OF NATURAL RESOURCES
SURVEYS AND MAPPING BRANCH

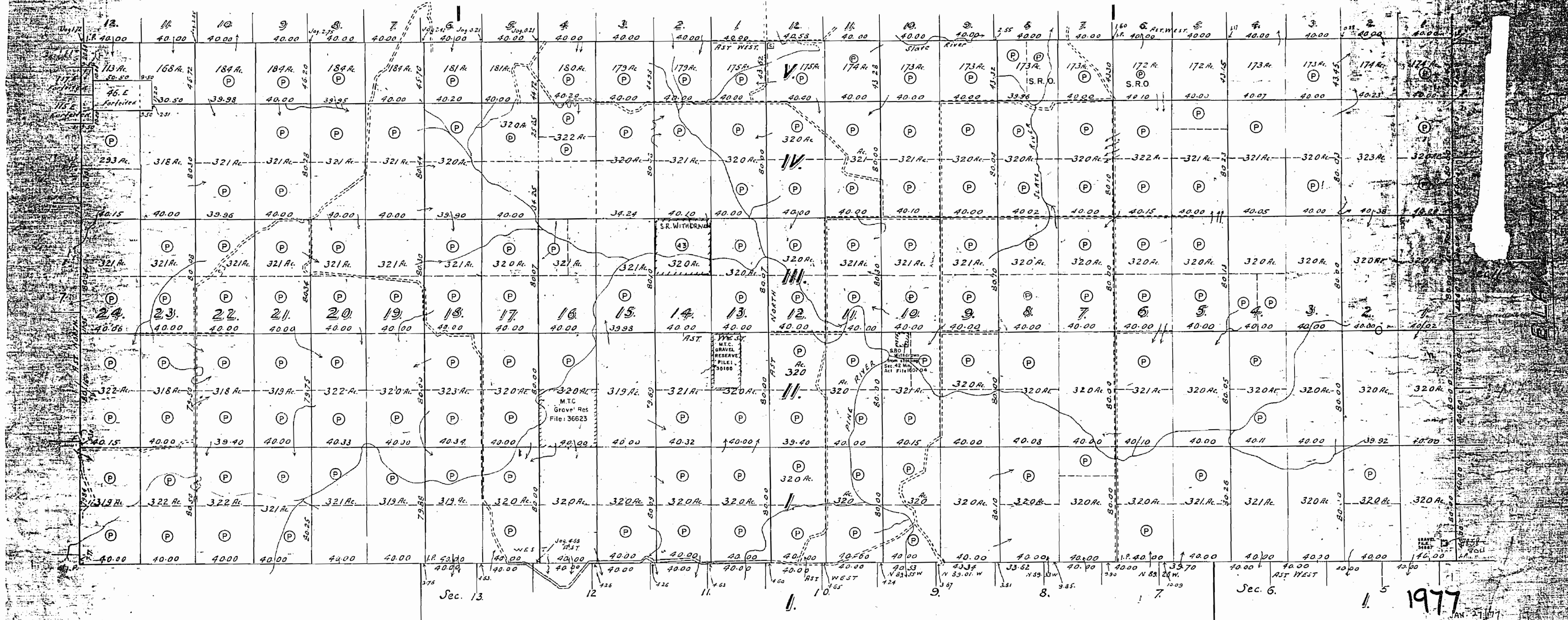
DISTRICT OF THUNDER BAY
THUNDER BAY MINING DIVISION

Scale: 40 Chains = 1 Inch.



GILLIES T.P.

SCOBLE T.P.



DEVON T.P.

PARDEE T.P.

CROOKS T.P.

Order No	File	Date	Disposition
43	W.24	12/23/38	2/5/74 S.R.O.

A.H. Macdougall O.L.S. 1904.

Improved Roads surveyed under instructions
by R.S. Kirkup, O.L.S. 1932 shown thus. =====

M.1857
Department of Surveys
Parliament Buildings
December 1934. Toronto, Ontario, Canada

1857

PEARSON T.P.

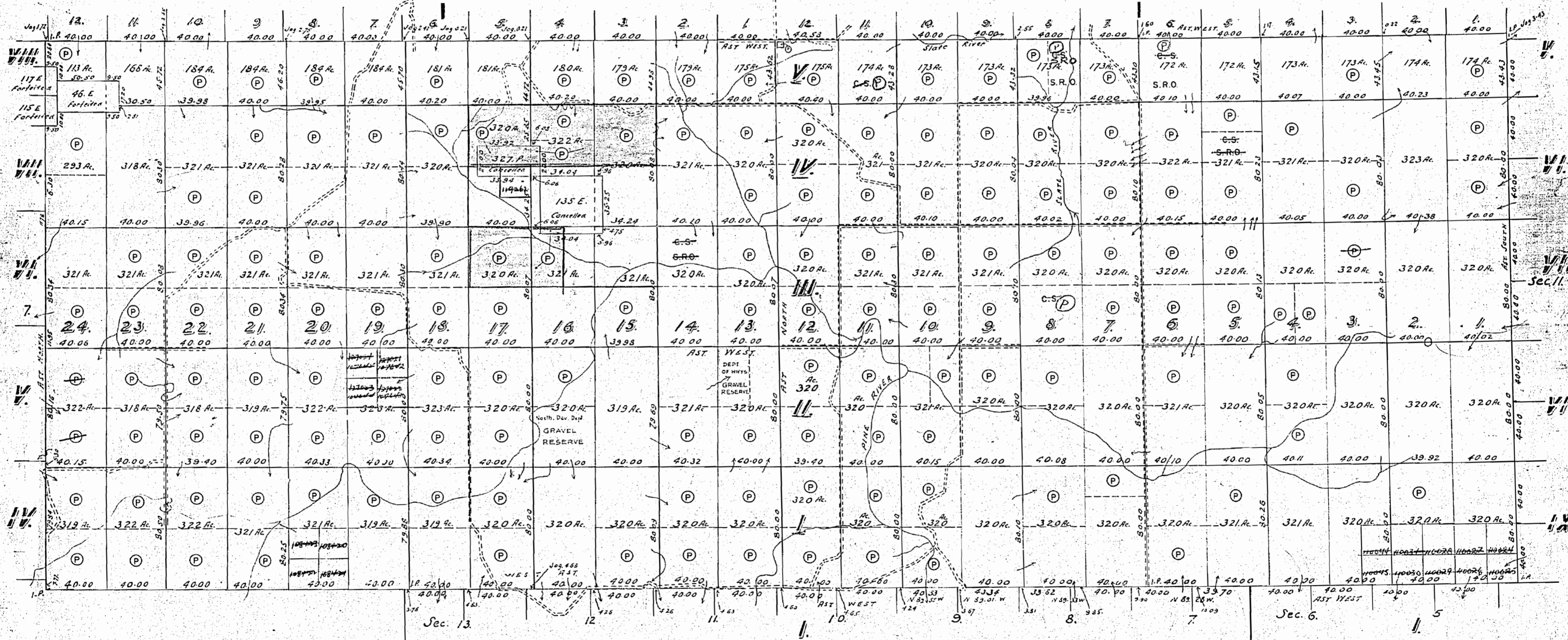
DISTRICT OF THUNDER BAY
Port Arthur MINING DIVISION

Scale: 40 Chains = 1 Inch.



GILLIES T.P.

SCOBLE T.P.



DEVON T.P.

PARDEE T.P.

CROOKS T.P.

See Land Roll for
135 E & 327 P for
status.
- P
- Crown

1961

Surveyed by A.H. Macdougall O.L.S. 1904.

Improved Roads surveyed under instructions
by R.S. Kirkup, O.L.S. 1932 shown thus: =====

Department of Surveys,
Parliament Buildings,
December 1934, Toronto, Ontario, Canada.

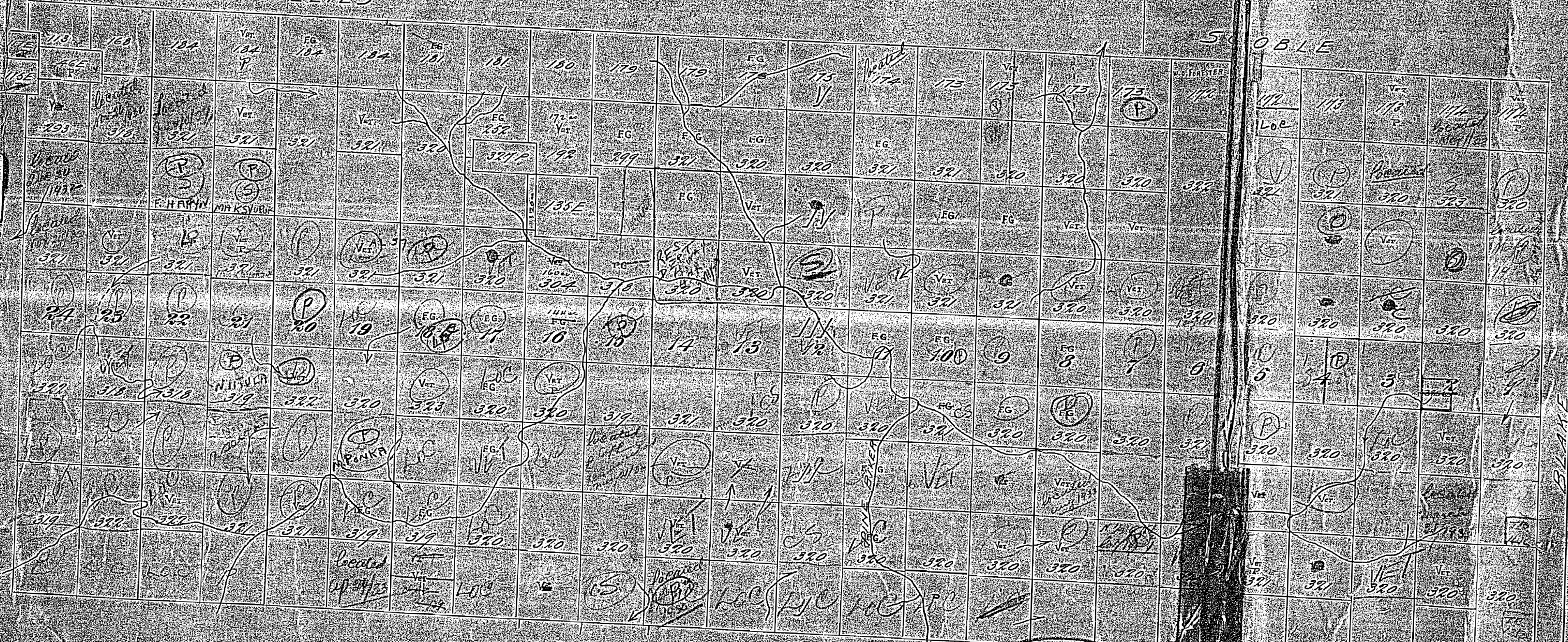
M1857

PEARSON

Scale 40 Chains = 1 inch

GILLIES

SCOBLE



PARDEE

M 1857

232

CROOKS

FB 175

GILLIES G-657

3 SHOWN
FROM THE
THEIR TR.
IS NOT
GUARANTEED.
FOR LEGAL SURVEY PURPOSES CONSULT
THE ORIGINAL PLAN AND FIELD NOTES
OF RECORD IN THE MINISTRY OF
NATURAL RESOURCES AT TORONTO.

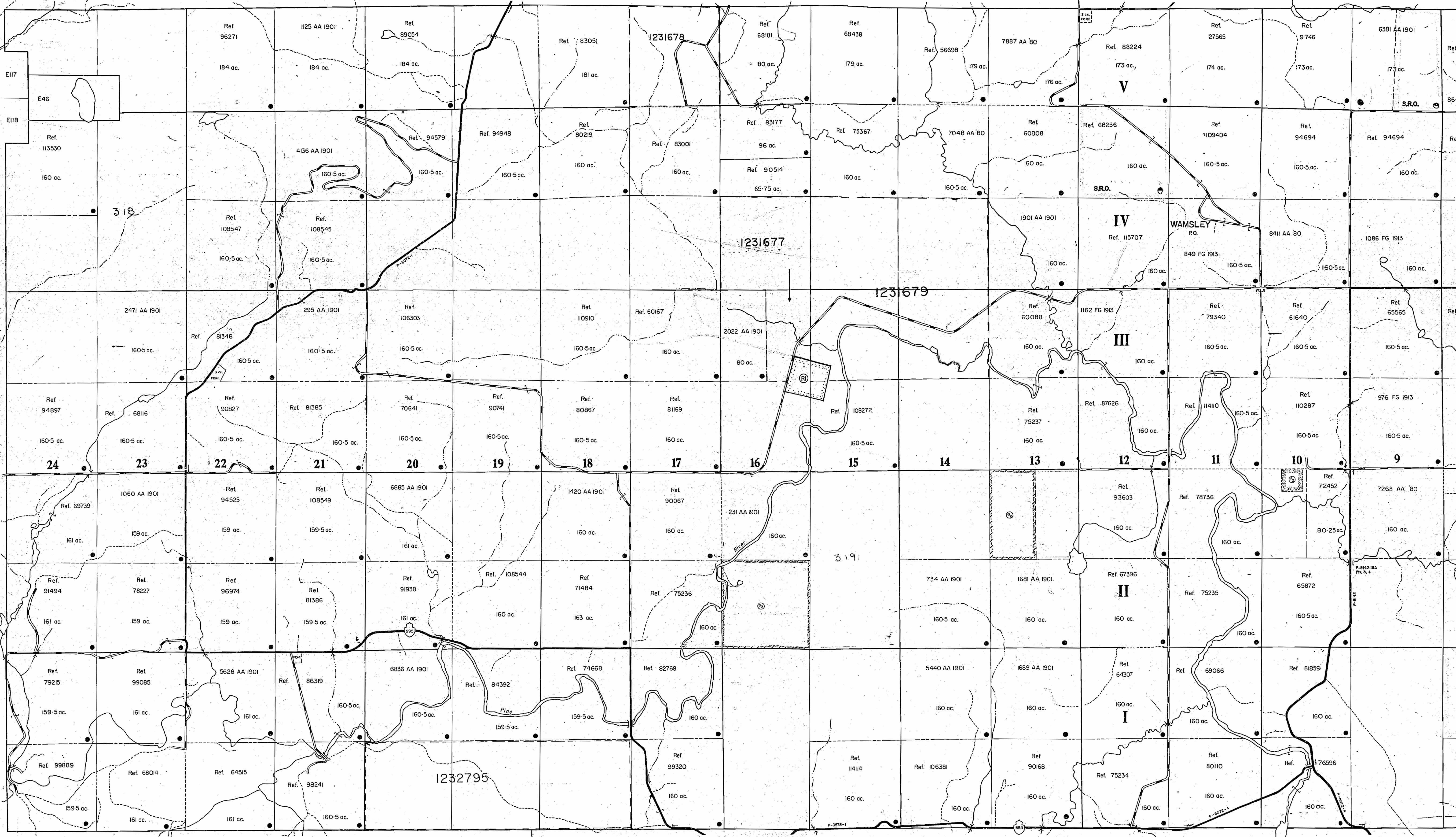
ACREAGES SHOWN FOR PATENTED LOTS
ARE IN ACCORDANCE WITH AREA GRANTED.

SAND & GRAVEL

GRAVEL FILE 34667
M.T.C. GRAVEL FILE 35185
36623

THE INFORMATION THAT
APPEARS ON THIS MAP
HAS BEEN COMPILED
FROM VARIOUS SOURCES,
AND ACCURACY IS NOT
GUARANTEED. THOSE
WISHING TO STAKE MIN-
ING CLAIMS SHOULD CON-
SULT WITH THE MINING
RECORDER, MINISTRY OF
NORTHERN DEVELOP-
MENT AND MINES, FOR AD-
DITIONAL INFORMATION
ON THE STATUS OF THE
LANDS SHOWN HEREON.

FRALEIGH G-656



DEVON G-650

F-2

PARDEE G-681