

REFERENCES

AREAS WITHDRAWN FROM DISPOSITION

M.R.O. - MINING RIGHTS ONLY

S.R.O. - SURFACE RIGHTS ONLY

M.+ S. - MINING AND SURFACE RIGHTS

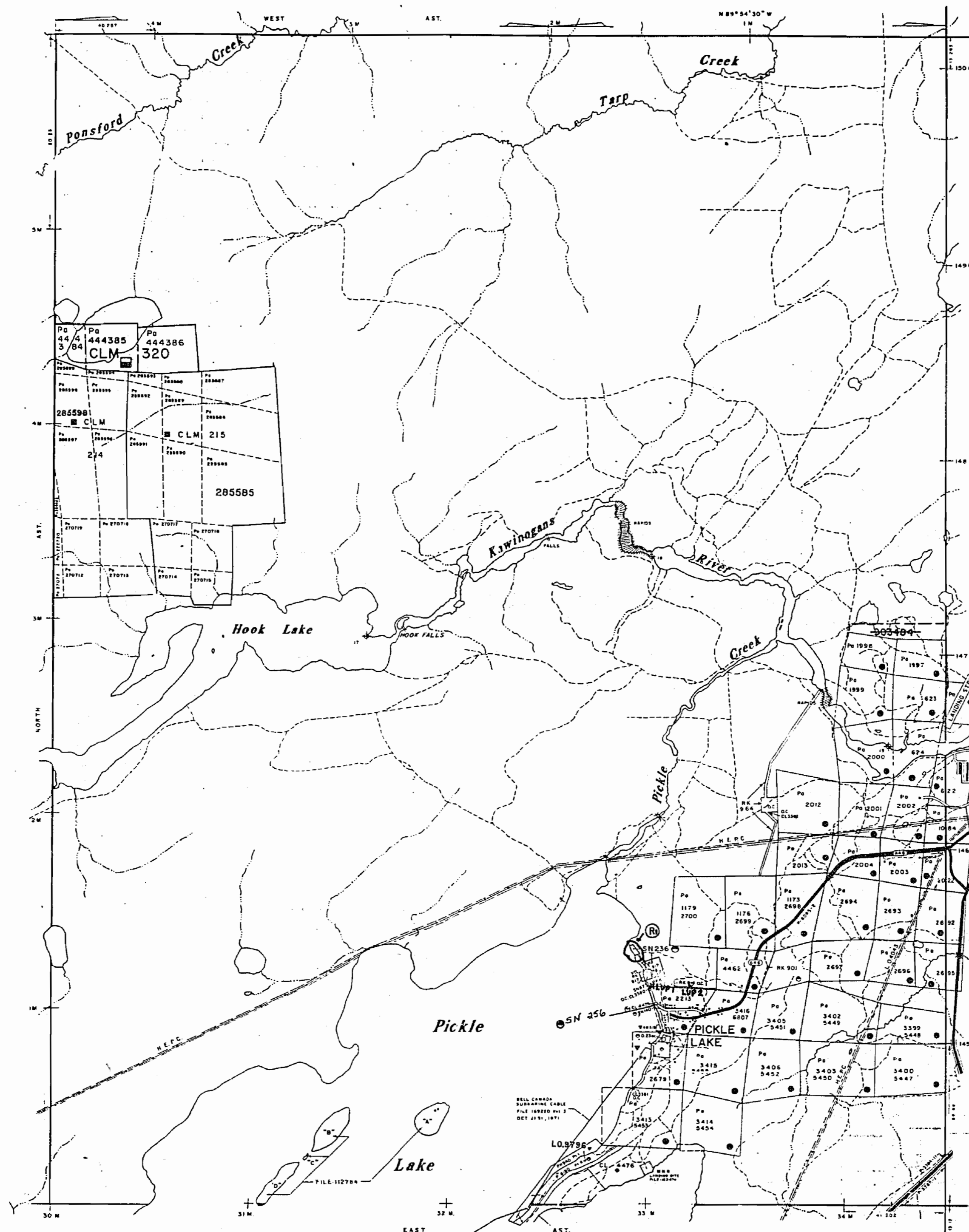
Description	Order No.	Date	Disposition	File
-------------	-----------	------	-------------	------

® BEACH PARK W-SL-01/90 NWR

L.U.P. 1 - SEAPLANE BASE

L.U.P. 2 --BELL CANADA

NOTE: THE WHOLE OF PONSFORD TOWNSHIP HAS BEEN INCORPORATED INTO THE TOWNSHIP OF PICKLE LAKE



(CONNELL TOWNSHIP) Tarp Lake Gaa31

LEGEND

- HIGHWAY AND ROUTE No.
- OTHER ROADS
- TRAILS
- SURVEYED LINES:
 - TOWNSHIPS, BASE LINES, ETC.
 - LOTS, MINING CLAIMS, PARCELS, ETC.
- UNSURVEYED LINES:
 - LOT LINES
 - PARCEL BOUNDARY
 - MINING CLAIMS ETC.
- RAILWAY AND RIGHT OF WAY
- UTILITY LINES
- NON-PERENNIAL STREAM
- FLOODING OR FLOODING RIGHTS
- SUBDIVISION OR COMPOSITE PLAN
- RESERVATIONS
- ORIGINAL SHORELINE
- MARSH OR MUSKEG
- MINES
- TRAVERSE MONUMENT

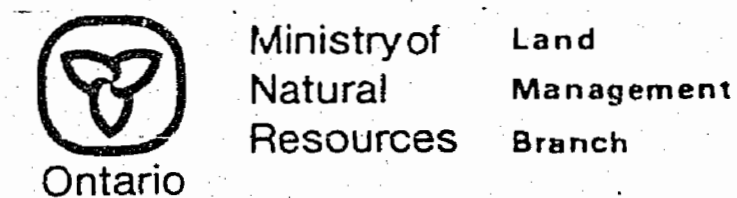
DISPOSITION OF CROWN LANDS

TYPE OF DOCUMENT	SYMBOL
PATENT, SURFACE & MINING RIGHTS	
" SURFACE RIGHTS ONLY	
" MINING RIGHTS ONLY	
LEASE, SURFACE & MINING RIGHTS	
" SURFACE RIGHTS ONLY	
" MINING RIGHTS ONLY	
LICENCE OF OCCUPATION	
ORDER-IN-COUNCIL	
RESERVATION	
CANCELLED	
SAND & GRAVEL	

NOTE: MINING RIGHTS IN PARCELS PATENTED PRIOR TO MAY 6, 1913, VESTED IN ORIGINAL PATENTEE BY THE PUBLIC LANDS ACT, R.S.O. 1970, CHAP. 380, SEC. 63, SUBSEC. 1.

SCALE: 1 INCH = 40 CHAINS

TOWNSHIP
PONSFORD
 M.N.R. ADMINISTRATIVE DISTRICT
 SIOUX LOOKOUT
 MINING DIVISION
 PATRICIA
 LAND TITLES / REGISTRY DIVISION
 KENORA (PATRICIA PORTION)



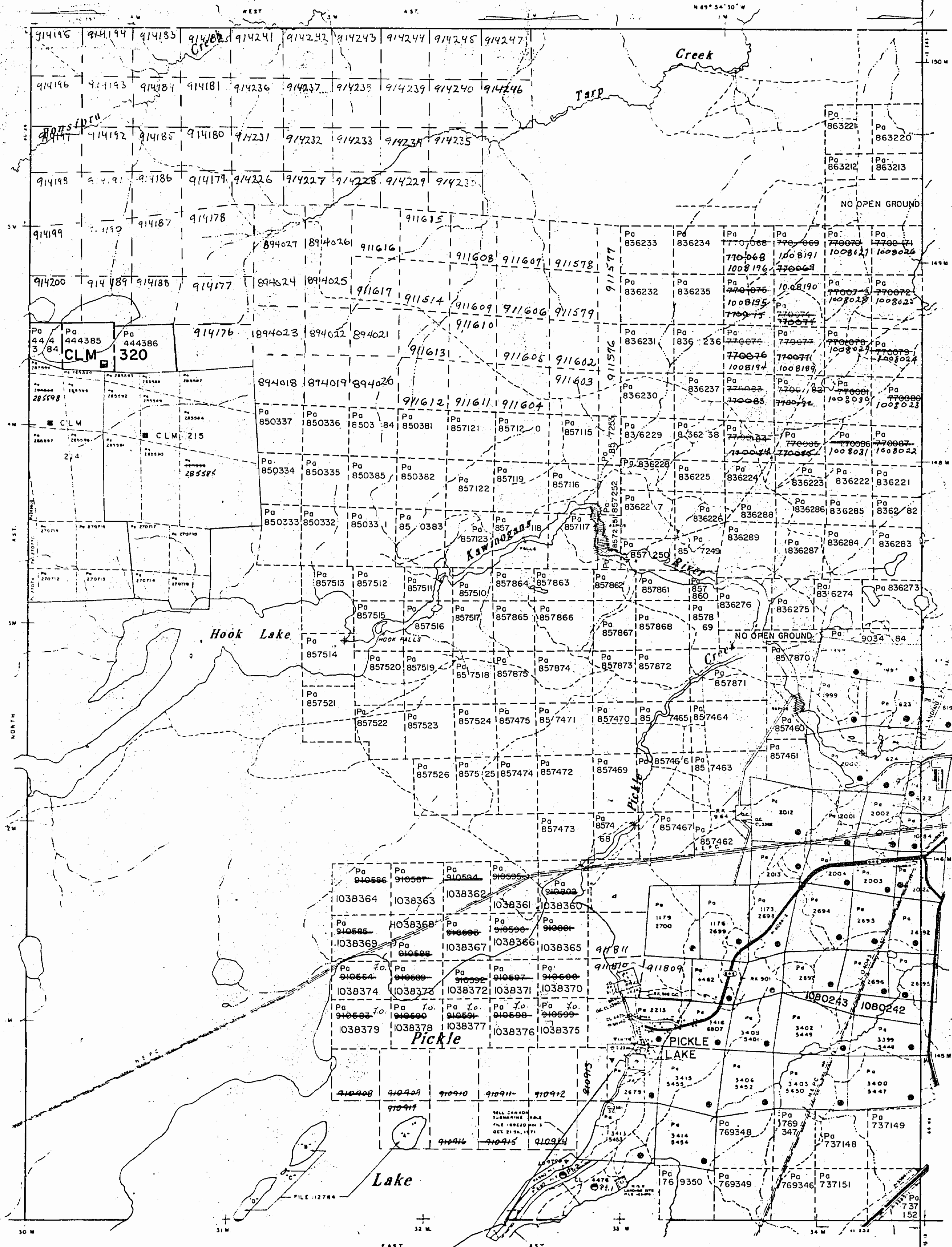
Date SEPTEMBER 1986

Number

G-2181

AREAS WITHDRAWN FROM DISPOSITION

- M.R.C. - MINING RIGHTS ONLY
- S.F.C. - SURFACE RIGHTS ONLY
- M.S. - MINING AND SURFACE RIGHTS



- HIGHWAY AND ROUTE NO.
- OTHER ROAD
- TRAILS
- SURVEYED LINES
- TOWNSHIP BASE LINES ETC.
- LOTS, MINING CLAIMS PARCELS ETC.
- UNIMPROVED LINES
- LOT LINES
- PARCEL BOUNDARY
- MINING CLAIMS ETC.
- RAILWAY AND RIGHT OF WAY
- UTILITY LINES
- NON-PERENNIAL STREAM
- FLOODING OR FLOODING RIGHTS
- SUBDIVISION OR COMPOSITE PLAN
- RESERVATIONS
- ORIGINAL SHORELINE
- MARSH OR MUSKEG
- MINES
- TRAPSE MEASUREMENT

DISPOSITION OF CROWN LANDS

TYPE OF DOCUMENT	SYMBOL
PATENT, SURFACE & MINING RIGHTS	●
- SURFACE RIGHTS ONLY	○
- MINING RIGHTS ONLY	○
LEASE, SURFACE & MINING RIGHTS	■
- SURFACE RIGHTS ONLY	■
- MINING RIGHTS ONLY	■
LICENCE OF OCCUPATION	□
ORDER-IN-COUNCIL	CC
RESERVATION	○
CANCELLED	○
SAND & GRAVEL	○

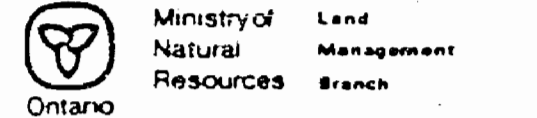
NOTE: MINING RIGHTS IN PARCELS PATENTED PRIOR TO MAY 4 1878 VESTED IN ORIGINAL PATENTEE BY THE PUBLIC LANDS ACT 430 1878 CHAP 38A SEC 43 SUBSEC 1

SCALE 1 INCH = 40 CHAINS

TWP CONNELL

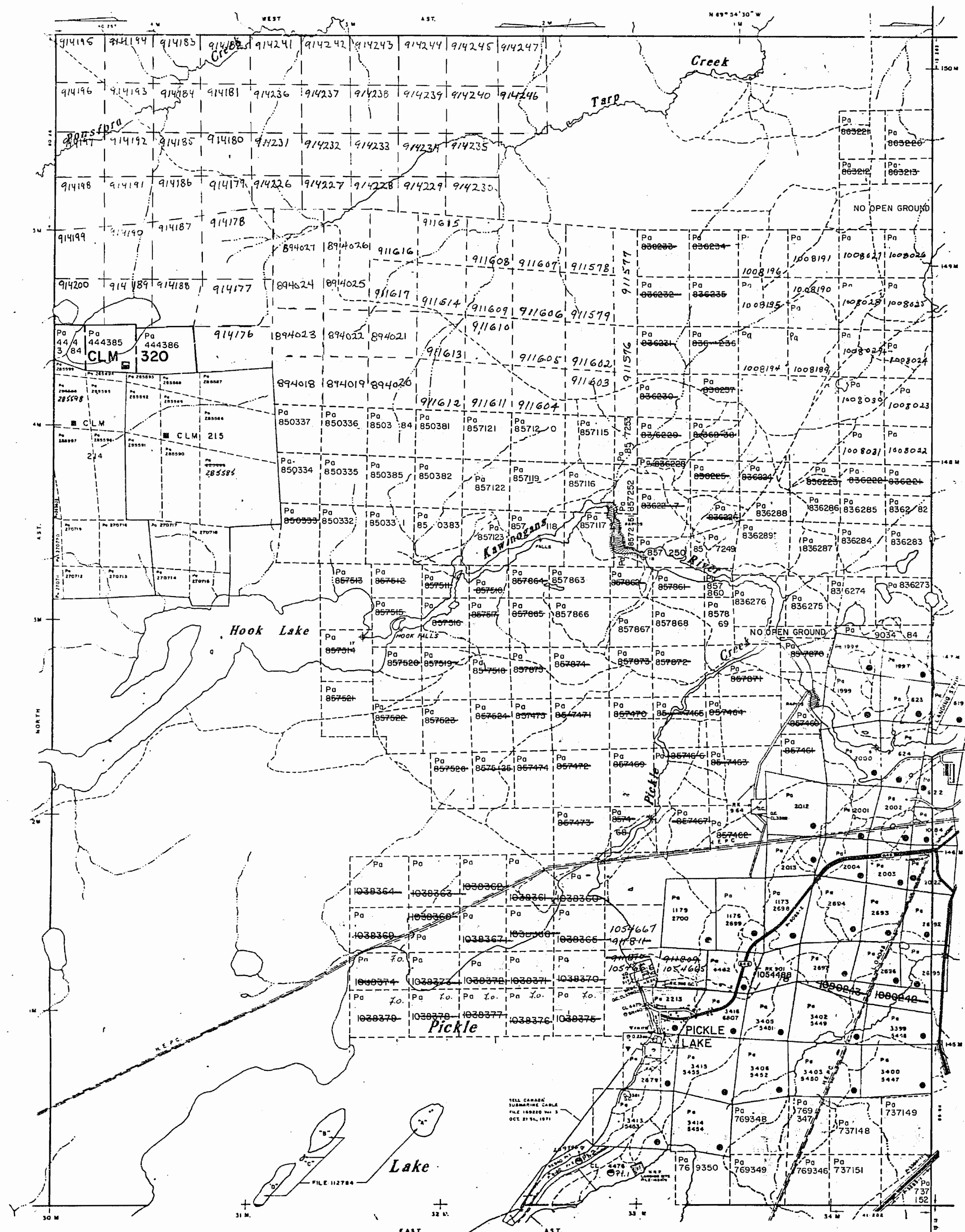
- Oct 31/86
- Oct 16/86
- Feb 2/87
- Mar 12/87
- JUNE 4/87
- Sept. 24/87
- Oct. 5/87

TOWNSHIP
PONSFORD
 M.R.A. ADMINISTRATIVE DISTRICT
SIoux LOOKOUT
 MINING DIVISION
PATRICIA
 LAND TITLES / REGISTRY DIVISION
KENORA (PATRICIA PORTION)



AREAS WITHDRAWN DISPOSITION

M.R.C. - MINING RIGHTS ONLY
 S.R.O. - SURFACE RIGHTS ONLY
 M.S. - MINING AND SURFACE RIGHTS



LEG

HIGHWAY AND ROUTE NO.	
OTHER ROAD	
TRAILS	
SURVEYED LINES	
TOWNSHIP, RANGE LINES, ETC.	
LOTS, MINING CLAIMS, PARCELS, ETC.	
UNSURVEYED LINES	
LOT LINES	
PARCEL BOUNDARY	
MINING CLAIMS ETC.	
RAILWAY AND RIGHT OF WAY	
UTILITY LINES	
NON-PERENNIAL STREAM	
FLOODING OR FLOODING RIGHTS	
SUBDIVISION OR COMPOSITE PLAN	
RESERVATIONS	
ORIGINAL SHORELINE	
MARSH OR MUSKIEG	
MINES	
TRAVERSE DOCUMENT	

DISPOSITION OF CROWN LANDS

TYPE OF DOCUMENT	SYMBOL
PATENT, SURFACE & MINING RIGHTS	
- SURFACE RIGHTS ONLY	
- MINING RIGHTS ONLY	
LEASE, SURFACE & MINING RIGHTS	
- SURFACE RIGHTS ONLY	
- MINING RIGHTS ONLY	
LICENCE OF OCCUPATION	
ORDER-IN-COUNCIL	
RESERVATION	
CANCELLED	
SAND & GRAVEL	

NOTE: MINING RIGHTS IN PARCELS PATENTED PRIOR TO MAY 1, 1915 VESTED IN ORIGINAL PATENTEE BY THE PUBLIC LANDS ACT, R.S.O. 1914, CHAP. 300, SEC. 48 SUBSECTION 1.

SCALE 1 INCH = 40 CHAINS

TWP.
 CONNELL

Oct 31/86
 Oct 16/86
 Feb 2/87
 May 27/87
 JUNE 4/87
 Sept 24/87
 Oct 5/87
 Aug 31/88
 Sept 8/88
 Sept 23/88
 Oct 1/88
 Mar 7/89
 Mar 20/89
 June 23/89

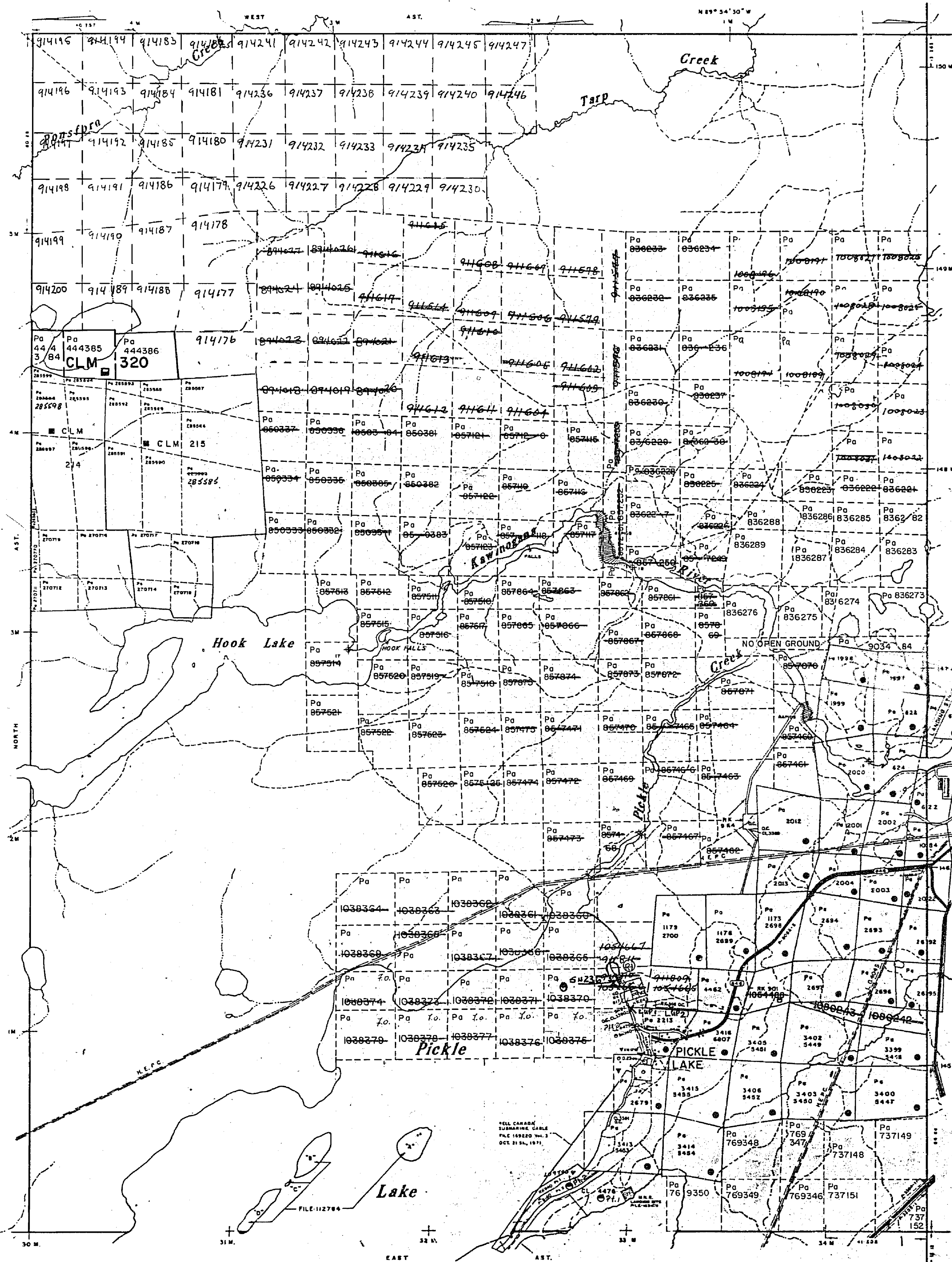
TOWNSHIP
PONSFORD
 M.R.R. ADMINISTRATIVE DISTRICT
SIoux LOOKOUT
 MINING DIVISION
PATRICIA
 LAND TITLES / REGISTRY DIVISION
KENORA (PATRICIA PORTION)

Ministry of Natural Resources
 Land Management Branch
 Ontario

AREAS WITHDRAWN FROM DISPOSITION

- M.R.C. - MINING RIGHTS ONLY
- S.R.D. - SURFACE RIGHTS ONLY
- M.S.E. - MINING AND SURFACE RIGHTS

(RI) - BEACH/PARK W-SL-01/90 NRW



THE INFORMATION THAT APPEARS ON THIS MAP HAS BEEN COMPILED FROM VARIOUS SOURCES, AND ACCURACY IS NOT GUARANTEED. THOSE WISHING TO STAKE MINING CLAIMS SHOULD CONSULT WITH THE MINING RECORDER, MINISTRY OF NORTHERN DEVELOPMENT AND MINES, FOR ADDITIONAL INFORMATION ON THE STATUS OF THE LANDS SHOWN HEREON.

LEGEND

- HIGHWAY AND ROUTE NO.
- OTHER HIGHWAY
- TRAILS
- SURVEYED LINES
- TOWNSHIPS, BASE LINES, ETC.
- LOTS, MINING CLAIMS, PARCELS, ETC.
- UNSURVEYED LINES
- LOT LINES
- PARCEL BOUNDARY
- MINING CLAIMS, ETC.
- RAILWAY AND RIGHT OF WAY
- UTILITY LINES
- NON-PERMANENT STREAM
- FLOODING OR FLOODING RIGHTS
- SUBDIVISION OR COMPOSITE PLAN
- RESERVATIONS
- ORIGINAL SHORELINE
- MARSH OR MUSKEG
- MINES
- TRAVERSE MONUMENT

DISPOSITION OF CROWN LANDS

TYPE OF DOCUMENT	SYMBOL
PATENT, SURFACE & MINING RIGHTS	●
- SURFACE RIGHTS ONLY	○
- MINING RIGHTS ONLY	◐
LEASE, SURFACE & MINING RIGHTS	■
- SURFACE RIGHTS ONLY	◼
- MINING RIGHTS ONLY	◻
LICENSE OF OCCUPATION	▽
ORDER-IN-COUNCIL	◌
RESERVATION	◊
CANCELLED	◌
SAND & GRAVEL	○

NOTE: MINING RIGHTS IN PARCELS PATENTED PRIOR TO MAY 1, 1912, VESTED IN ORIGINAL PATENTEE BY THE PUBLIC LABOUR ACT, R.S.O. 1970, CHAP. 300, SEC. 42, SUBSEC. 1.

SCALE 1 INCH = 40 CHAINS

TWP. CONNELL

- Oct 31/86
- Oct 16/86
- Feb. 2/87
- May 27/87
- JUNE 4/87
- Sept. 24/87
- Oct. 5/87
- Aug 21/88
- Sept. 8/88
- Sept 23/88
- Oct 1/88
- Mar 7/89
- Mar 24/89
- June 23/89
- Sept 7/89
- Sept 26/89
- Oct 1/89
- Dec 1/89
- JUNE 22/90

L.U.P. 1 - SEAPLANE BASE

L.U.P. 2 - BELL CANADA

TOWNSHIP
PONSFORD
M.R.A. ADMINISTRATIVE DISTRICT
SIoux LOOKOUT
MINING DIVISION
PATRICIA
LAND TITLES / REGISTRY DIVISION
KENORA (PATRICIA PORTION)



Date JULY, 1988

Number

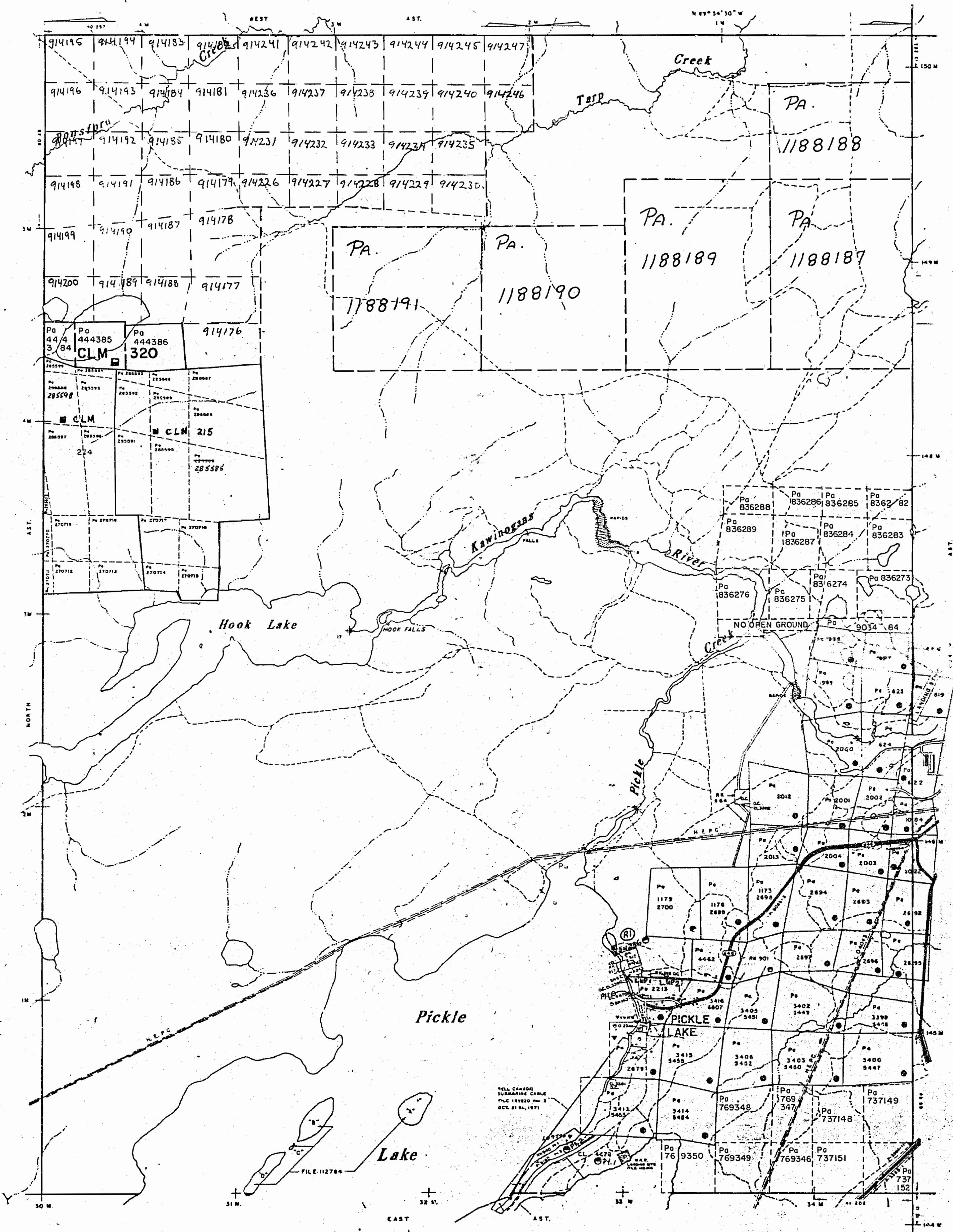
G-2181

REFERENCES

AREAS WITHDRAWN FROM DISPOSITION

- M.R.O. - MINING RIGHTS ONLY
- S.R.O. - SURFACE RIGHTS ONLY
- M.S.E. - MINING AND SURFACE RIGHTS

(R1) - BEACH/PARK W-SL-01/90 NRW



THE INFORMATION THAT APPEARS ON THIS MAP HAS BEEN COMPILED FROM VARIOUS SOURCES, AND ACCURACY IS NOT GUARANTEED. THOSE WISHING TO STAKE MINING CLAIMS SHOULD CONSULT WITH THE MINING RECORDER, MINISTRY OF NORTHERN DEVELOPMENT AND MINES, FOR ADDITIONAL INFORMATION ON THE STATUS OF THE LANDS SHOWN HEREON.

LEGEND

- HIGHWAY ROUTE No.
- OTHER ROAD
- TRAILS
- SURVEYED LINES
- TOWNSHIP, BASE LINES, ETC.
- LOTS, MINING CLAIMS, PARCELS, ETC.
- UNSURVEYED LINES
- PARCEL BOUNDARY
- MINING CLAIMS, ETC.
- RAILWAY AND RIGHT OF WAY
- UTILITY LINES
- NON-PERENNIAL STREAM
- FLOODING OR FLOODING RIGHTS
- SUBDIVISION OR ZONING PLAN
- RESERVATIONS
- ORIGINAL SURVEY
- MARSH OR MUSKIE
- WATER
- TRAVERSE MONUMENT

DISPOSITION OF CROWN LANDS

- | TYPE OF DOCUMENT | SYMBOL |
|--------------------------------|--------|
| PATENT SURFACE & MINING RIGHTS | |
| SURFACE RIGHTS ONLY | |
| MINING RIGHTS ONLY | |
| LEASE, SURFACE & MINING RIGHTS | |
| SURFACE RIGHTS ONLY | |
| MINING RIGHTS ONLY | |
| LICENCE OF OCCUPATION | |
| ORDER-IN-COUNCIL | |
| RESERVATION | |
| CANCELLED | |
| SAND & GRAVEL | |

NOTE: MINING RIGHTS IN PARCELS PATENTED PRIOR TO MAY 1, 1915 VESTED IN ORIGINAL PATENTEE BY THE PUBLIC LANDS ACT, R.S.O. 1914, CHAP. 206, SEC. 22 SUBSEC. 1

SCALE 1 INCH = 40 CHAINS

TWP. CONNELL

- Oct 31/86
- Oct. 16/86
- Feb. 2/87
- May 27/87
- JUNE 4/87
- Sept. 24/87
- Oct. 5/87
- Aug. 21/87
- Sept. 8/88
- Sept. 23/88
- Oct. 1/88
- Mar 7/89
- Mar 11/89
- June 23/89
- Sept 7/89
- Sept 26/89
- Oct 1/89
- Dec 13/89
- JUNE 22/90
- Oct. 23/91

L.U.P. 1 - SEAPLANE BASE
L.U.P. 2 - BELL CANADA

TOWNSHIP
PONSFORD
M.R.N. ADMINISTRATIVE DISTRICT
SIoux LOOKOUT
MINING DIVISION
PATRICIA
LAND TITLES / REGISTRY DIVISION
KENORA (PATRICIA PORTION)

Ministry of Natural Resources
Land Management Branch
Ontario

DATE JULY, 1996

Sheet
G-2181

REFER

AREAS WITHDRAWN FROM DISPOSITION

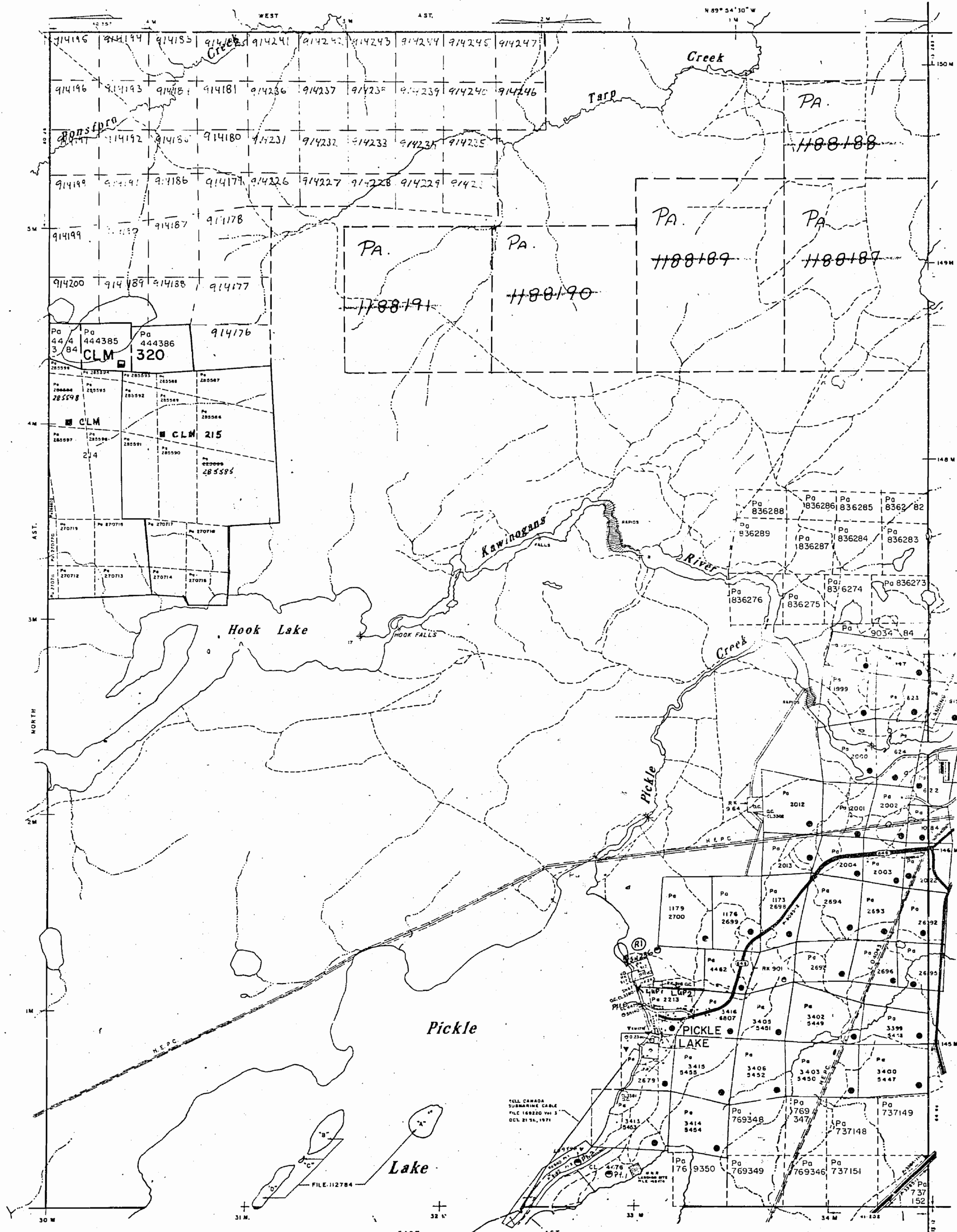
- M.R.C. - MINING RIGHTS ONLY
- S.R.O. - SURFACE RIGHTS ONLY
- M.S. - MINING AND SURFACE RIGHTS

Disposition Order No. Date Disposition File
 (RI) - BEACH/PARK W-SL-01/90 NRW

NOTE: THE WHOLE OF PONSFORD TOWNSHIP HAS BEEN INCORPORATED INTO THE TOWNSHIP OF PICKLE LAKE

November 25/93

THE INFORMATION THAT APPEARS ON THIS MAP HAS BEEN COMPILED FROM VARIOUS SOURCES. AND ACCURACY IS NOT GUARANTEED. THOSE WISHING TO STAKE MINING CLAIMS SHOULD CONSULT WITH THE MINING RECORDER, MINISTRY OF NORTHERN DEVELOPMENT AND MINES, FOR ADDITIONAL INFORMATION ON THE STATUS OF THE LANDS SHOWN HEREON.



LEGEND

HIGHWAY AND ROUTE NO.	[Symbol]
OTHER ROAD	[Symbol]
TRAILS	[Symbol]
SURVEY LINES	[Symbol]
TOWNSHIP BASE LINES, ETC.	[Symbol]
LOTS, MINING CLAIMS, PARCELS, ETC.	[Symbol]
UNSURVEYED LINES	[Symbol]
LOT LINES	[Symbol]
PARCEL BOUNDARY	[Symbol]
MINING CLAIMS, ETC.	[Symbol]
RAILWAY AND RIGHT OF WAY	[Symbol]
UTILITY LINES	[Symbol]
NON-PERENNIAL STREAM	[Symbol]
FLOODING OR FLOODING RIGHTS	[Symbol]
SUBDIVISION OR COMPOSITE PLAN RESERVATIONS	[Symbol]
ORIGINAL SHORELINE	[Symbol]
MARSH OR MUSKEG	[Symbol]
MINES	[Symbol]
TRAVERSE ALIGNMENT	[Symbol]

DISPOSITION OF CROWN LANDS

TYPE OF DOCUMENT	SYMBOL
PATENT SURFACE & MINING RIGHTS	[Symbol]
- SURFACE RIGHTS ONLY	[Symbol]
- MINING RIGHTS ONLY	[Symbol]
LEASE, SURFACE & MINING RIGHTS	[Symbol]
- SURFACE RIGHTS ONLY	[Symbol]
- MINING RIGHTS ONLY	[Symbol]
LICENCE OF OCCUPATION	[Symbol]
ORDER-IN-COUNCIL	[Symbol]
RESERVATION	[Symbol]
CANCELLED	[Symbol]
SAND & GRAVEL	[Symbol]

NOTE: MINING RIGHTS IN PARCELS PATENTED PRIOR TO MAY 1, 1913, VESTED IN ORIGINAL PATENTEE BY THE PUBLIC LANDS ACT, R.S.O. 1960, CHAP. 306, SEC. 43, SUBSEC. 1

SCALE 1 INCH = 40 CHAINS

TWP. CONNELL

L.U.P. 1 - SEAPLANE BASE
 L.U.P. 2 - BELL CANADA

TOWNSHIP
PONSFORD
 M.M.R. ADMINISTRATIVE DISTRICT
SIoux LOOKOUT
 MINING DIVISION
PATRICIA
 LAND TITLES / REGISTRY DIVISION
KENORA (PATRICIA PORTION)

Ministry of Natural Resources
 Land Management Branch
 Ontario

REFERENCES

AREAS WITHDRAWN FROM DISPOSITION

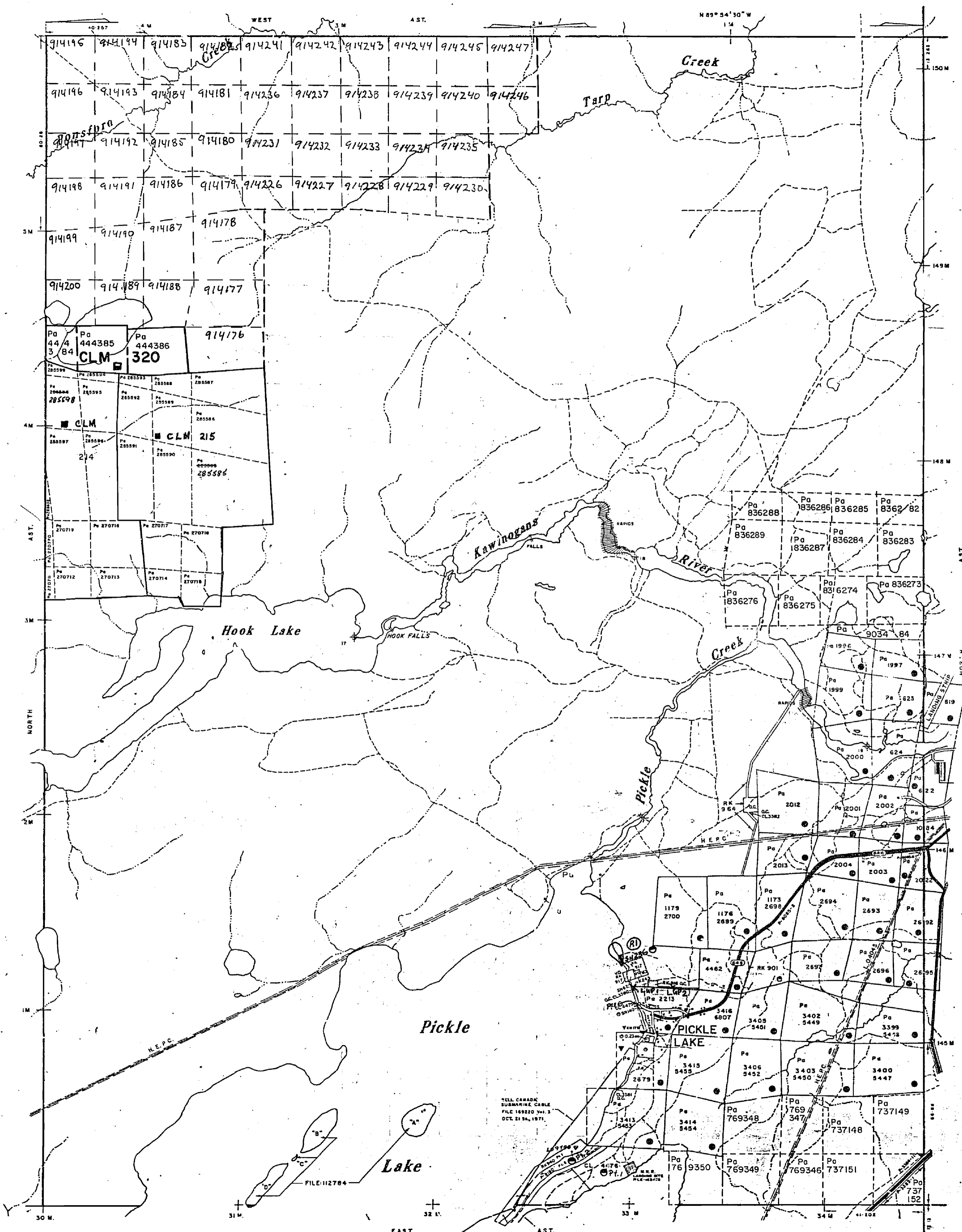
- M.R.O. - MINING RIGHTS ONLY
- S.R.S. - SURFACE RIGHTS ONLY
- M.S. - MINING AND SURFACE RIGHTS

(R1) - BEACH/PARK W-SL-01/90 NRW

NOTE: THE WHOLE OF PONSFORD TOWNSHIP HAS BEEN INCORPORATED INTO THE TOWNSHIP OF PICKLE LAKE

34 MAR 22 P 1:13
 (HISTORICAL)
 MINING RECORDER
 PATRICIA
 MINING DIVISION

THE INFORMATION THAT APPEARS ON THIS MAP HAS BEEN COMPILED FROM VARIOUS SOURCES, AND ACCURACY IS NOT GUARANTEED. THOSE WISHING TO STAKE MINING CLAIMS SHOULD CONSULT WITH THE MINING RECORDER, MINISTRY OF NORTHERN DEVELOPMENT AND MINES, FOR ADDITIONAL INFORMATION ON THE STATUS OF THE LANDS SHOWN HEREON.



LEGEND

- ROAD AND ROUTE NO.
- RAILROAD
- SURVEYED LINES
- TOWNSHIP, BASE LINES, ETC.
- LOTS, MINING CLAIMS, PARCELS, ETC.
- UNSURVEYED LINES
- LOT LINES
- PARCEL BOUNDARY
- MINING CLAIMS ETC.
- RAILWAY AND RIGHT OF WAY
- UTILITY LINES
- NON-PERMANENT STREAM
- FLOODING OR FLOODING RIGHTS
- SUBDIVISION OR COMPOSITE PLAN
- RESERVATIONS
- ORIGINAL SHORELINE
- MARSH OR MUSKEG
- MINES
- TRAVERSE DOCUMENT

DISPOSITION OF CROWN LANDS

TYPE OF DOCUMENT	SYMBOL
PATENT, SURFACE & MINING RIGHTS	●
- SURFACE RIGHTS ONLY	○
- MINING RIGHTS ONLY	○
LEASE, SURFACE & MINING RIGHTS	■
- SURFACE RIGHTS ONLY	■
- MINING RIGHTS ONLY	■
LICENCE OF OCCUPATION	□
ORDER-IN-COUNCIL	CC
RESERVATION	○
CANCELLED	○
SAND & GRAVEL	○

NOTE: MINING RIGHTS IN PARCELS PATENTED PRIOR TO MAY 4, 1915, VESTED IN ORIGINAL PATENTEE BY THE PUBLIC LANDS ACT, R.S.O. 1910, CHAP. 200, SEC. 43, SUBSEC. 1.

SCALE 1 INCH = 40 CHAINS

TWP CONNELL

L.U.P. 1 - SEAPLANE BASE

L.U.P. 2 - BELL CANADA

TOWNSHIP
PONSFORD
 M.R.A. ADMINISTRATIVE DISTRICT
SIoux LOOKOUT
 MINING DIVISION
PATRICIA
 LAND TITLES' REGISTRY DIVISION
KENORA (PATRICIA PORTION)

Ministry of Natural Resources
 Land Management Branch

Date JULY, 1988

Number

G-2181

REFERENCES

AREAS WITHDRAWN FROM DISPOSITION

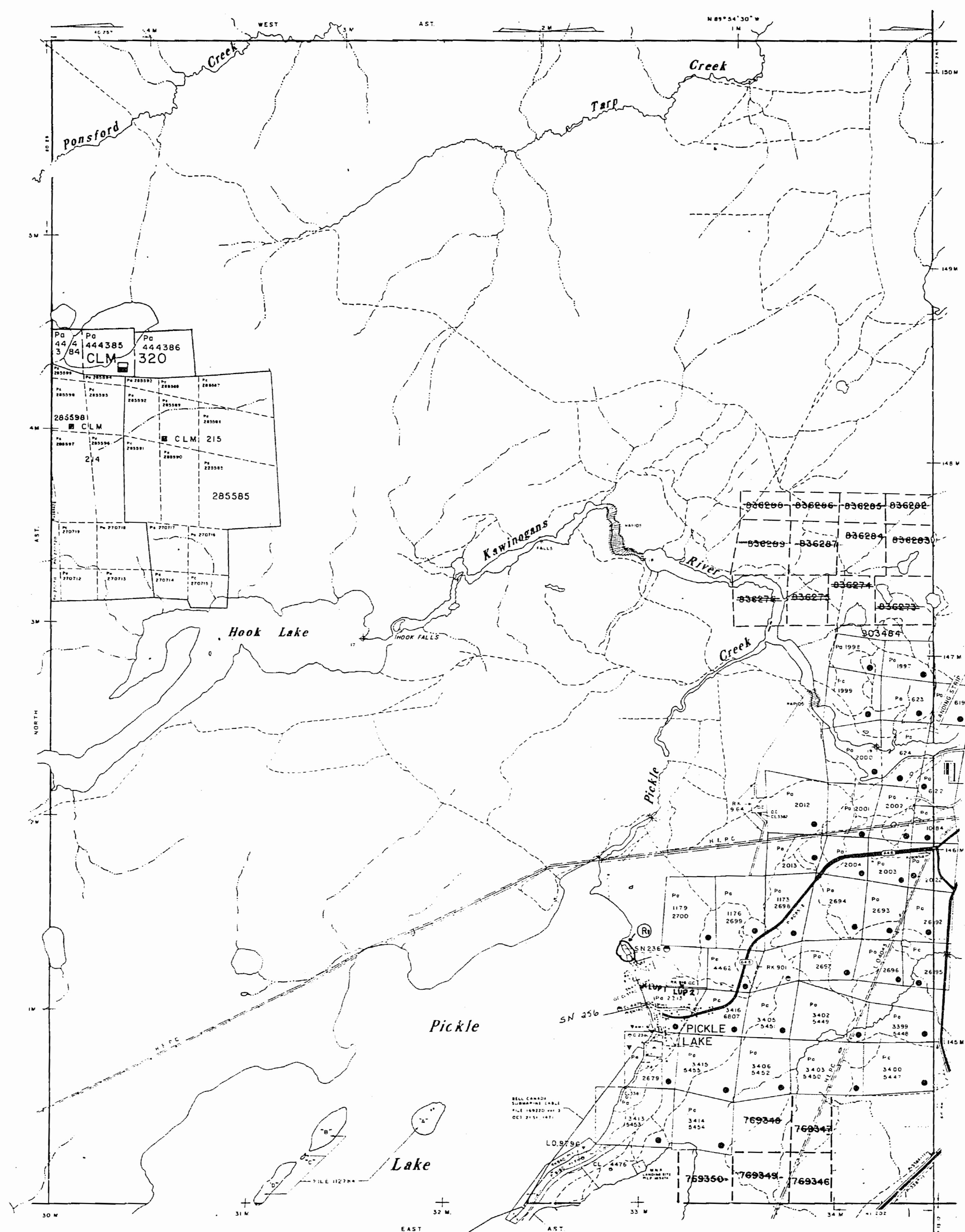
- M.R.O. - MINING RIGHTS ONLY
- S.R.O. - SURFACE RIGHTS ONLY
- M.+S. - MINING AND SURFACE RIGHTS

Description	Order No.	Date	Disposition	File
-------------	-----------	------	-------------	------

Ⓡ BEACH PARK W-SL-01/90 NWR

L.U.P. 1 - SEAPLANE BASE
L.U.P. 2 --BELL CANADA

NOTE: THE WHOLE OF PONSFORD TOWNSHIP HAS BEEN INCORPORATED INTO THE TOWNSHIP OF PICKLE LAKE



CONNELL TOWNSHIP
Tarp Lake
Gaasi

LEGEND

- HIGHWAY AND ROUTE No.
- OTHER ROADS
- TRAILS
- SURVEYED LINES:
 - TOWNSHIPS, BASE LINES, ETC.
 - LOTS, MINING CLAIMS, PARCELS, ETC.
- UNSURVEYED LINES:
 - LOT LINES
 - PARCEL BOUNDARY
 - MINING CLAIMS ETC.
- RAILWAY AND RIGHT OF WAY
- UTILITY LINES
- NON-PERENNIAL STREAM
- FLOODING OR FLOODING RIGHTS
- SUBDIVISION OR COMPOSITE PLAN
- RESERVATIONS
- ORIGINAL SHORELINE
- MARSH OR MUSKEG
- MINES
- TRAVERSE MONUMENT

DISPOSITION OF CROWN LANDS

TYPE OF DOCUMENT	SYMBOL
PATENT, SURFACE & MINING RIGHTS	●
" SURFACE RIGHTS ONLY	○
" MINING RIGHTS ONLY	◐
LEASE, SURFACE & MINING RIGHTS	■
" SURFACE RIGHTS ONLY	◼
" MINING RIGHTS ONLY	◻
LICENCE OF OCCUPATION	▼
ORDER-IN-COUNCIL	OC
RESERVATION	⊙
CANCELLED	⊗
SAND & GRAVEL	⊕

NOTE: MINING RIGHTS IN PARCELS PATENTED PRIOR TO MAY 6, 1913, VESTED IN ORIGINAL PATENTEE BY THE PUBLIC LANDS ACT, R.S.O. 1970, CHAP. 380, SEC. 63, SUBSEC. 1

SCALE: 1 INCH = 40 CHAINS

TOWNSHIP
PONSFORD
M.N.R. ADMINISTRATIVE DISTRICT
SIOUX LOOKOUT
MINING DIVISION
PATRICIA
LAND TITLES / REGISTRY DIVISION
KENORA (PATRICIA PORTION)



Date SEPTEMBER 1986 Number

G-2181

REFERENCES

AREAS WITHDRAWN FROM DISPOSITION

- M.R.O. - MINING RIGHTS ONLY
- S.R.O. - SURFACE RIGHTS ONLY
- M. & S. - MINING AND SURFACE RIGHTS

Disposition Order No Date Disposition File

Ⓢ BEACH PARK W-3L-01/90 NW4

L.U.P. 1 - SEAPLANE BASE

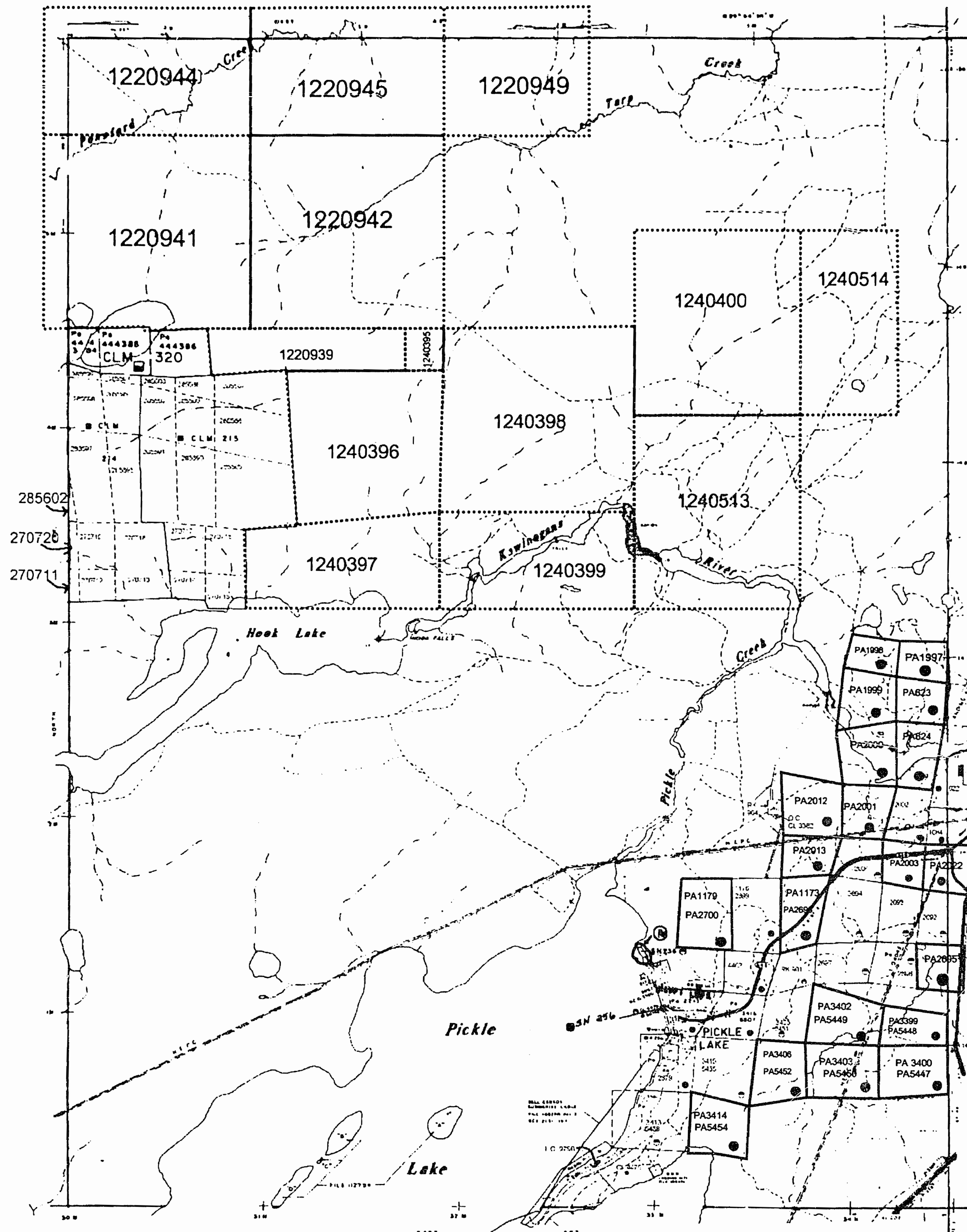
L.U.P. 2 - BELL CANADA

NOTE: THE WHOLE OF PONSFORD TOWNSHIP HAS BEEN INCORPORATED INTO THE TOWNSHIP OF PICKLE LAKE

THE INFORMATION THAT APPEARS ON THIS MAP HAS BEEN COMPILED FROM VARIOUS SOURCES AND ACCURACY IS NOT GUARANTEED

MAY 30 2000

THOSE WISHING TO STAKE MINING CLAIMS SHOULD CONSULT WITH THE MINING RECORDER, MINISTRY OF NORTHERN DEVELOPMENT AND MINES FOR ADDITIONAL INFORMATION ON THE STATUS OF THE LANDS SHOWN HEREON



CONNELL TOWNSHIP) Twp Lake G2831

LEGEND

HIGHWAY AND ROUTE No	
OTHER ROADS	
TRAILS	
SURVEYED LINES	
TOWNSHIPS, BASE LINES, ETC	
LOTS, MINING CLAIMS PARCELS, ETC	
UNSURVEYED LINES	
LOT LINES	
PARCEL BOUNDARY	
MINING CLAIMS ETC	
RAILWAY AND RIGHT OF WAY	
UTILITY LINES	
NON PERENNIAL STREAM	
FLOODING OR FLOODING RIGHTS	
SUBDIVISION OR COMPOSITE PLAN	
RESERVATIONS	
ORIGINAL SHORELINE	
MARSH OR MUSKEG	
MINES	
TRAVERSE MONUMENT	

DISPOSITION OF CROWN LANDS

TYPE OF DOCUMENT	SYMBOL
PATENT SURFACE & MINING RIGHTS	●
" SURFACE RIGHTS ONLY	○
" MINING RIGHTS ONLY	◌
LEASE SURFACE & MINING RIGHTS	■
" SURFACE RIGHTS ONLY	□
" MINING RIGHTS ONLY	◻
LICENCE OF OCCUPATION	▼
ORDER IN COUNCIL	○C
RESERVATION	○R
CANCELLED	○X
SAND & GRAVEL	○S

NOTE: MINING RIGHTS IN PARCELS PATENTED PRIOR TO MAY 8 1913 VESTED IN ORIGINAL PATENTEE BY THE PUBLIC LANDS ACT R.S.O. 1970 CHAP 300 SEC 63 SUBSEC 1

SCALE: 1 INCH = 40 CHAINS

TOWNSHIP
PONSFORD
 M.N.R. ADMINISTRATIVE DISTRICT
 SIOUX LOOKOUT
 MINING DIVISION
 PATRICIA
 LAND TITLES / REGISTRY DIVISION
 KENORA (PATRICIA PORTION)

Ministry of Natural Resources Land Management Branch

REFERENCES

AREAS WITHDRAWN FROM DISPOSITION

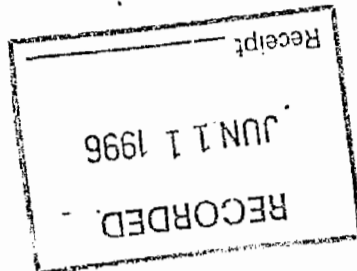
- M.R.O. — MINING RIGHTS ONLY
- S.R.O. — SURFACE RIGHTS ONLY
- M.+S. — MINING AND SURFACE RIGHTS

Description Order No. Date Disposition File

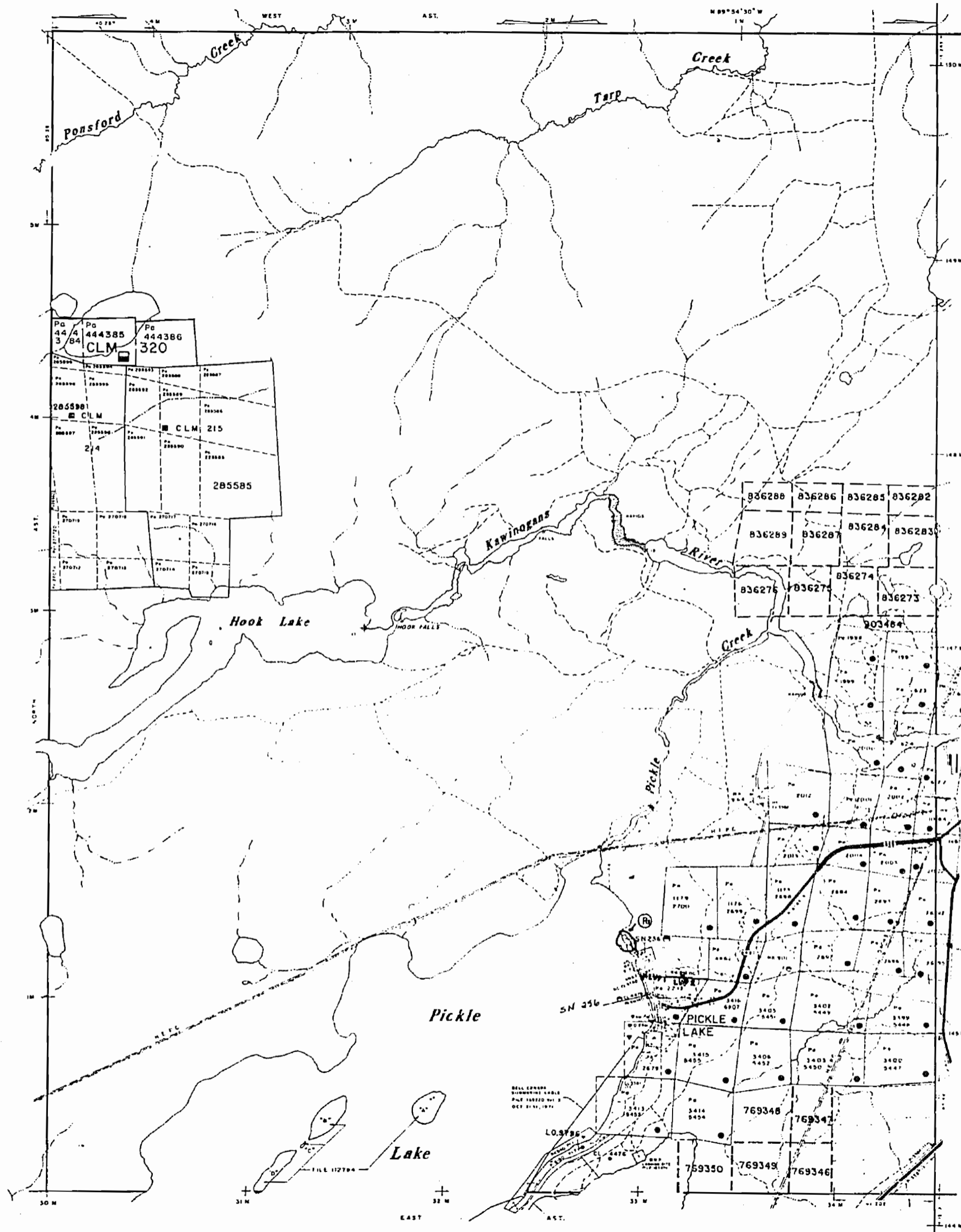
® BEACH PARK W-SL-01/90 NWR

L.U.P. 1 - SEAPLANE BASE

L.U.P. 2 - BELL CANADA



NOTE: THE WHOLE OF PONSFORD TOWNSHIP HAS BEEN INCORPORATED INTO THE TOWNSHIP OF PICKLE LAKE



LEGEND

HIGHWAY AND ROUTE No.	
OTHER ROADS	
TRAILS	
SURVEYED LINES:	
TOWNSHIPS, BASE LINES, ETC.	
LOTS, MINING CLAIMS, PARCELS, ETC.	
UNSURVEYED LINES:	
LOT LINES	
PARCEL BOUNDARY	
MINING CLAIMS ETC.	
RAILWAY AND RIGHT OF WAY	
UTILITY LINES	
NON-PERENNIAL STREAM	
FLOODING OR FLOODING RIGHTS	
SUBDIVISION OR COMPOSITE PLAN	
RESERVATIONS	
ORIGINAL SHORELINE	
MARSH OR MUSKIEG	
MINES	
TRAVERSE MONUMENT	

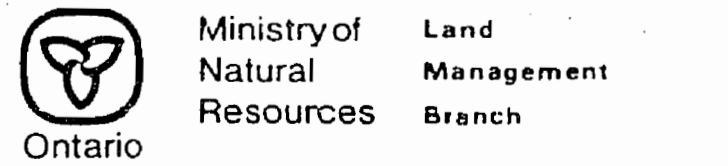
DISPOSITION OF CROWN LANDS

TYPE OF DOCUMENT	SYMBOL
PATENT, SURFACE & MINING RIGHTS	●
" SURFACE RIGHTS ONLY	○
" MINING RIGHTS ONLY	◐
LEASE, SURFACE & MINING RIGHTS	■
" SURFACE RIGHTS ONLY	◼
" MINING RIGHTS ONLY	◽
LICENCE OF OCCUPATION	▼
ORDER-IN-COUNCIL	OC
RESERVATION	◎
CANCELLED	⊙
SAND & GRAVEL	⊖

NOTE: MINING RIGHTS IN PARCELS PATENTED PRIOR TO MAY 6 1913 VESTED IN ORIGINAL PATENTEE BY THE PUBLIC LANDS ACT, R.S.O. 1970 CHAP 380, SEC 63, SUBSEC 1

SCALE: 1 INCH = 40 CHAINS

TOWNSHIP
PONSFORD
M.N.R. ADMINISTRATIVE DISTRICT
SIoux LOOKOUT
MINING DIVISION
PATRICIA
LAND TITLES / REGISTRY DIVISION
KENORA (PATRICIA PORTION)



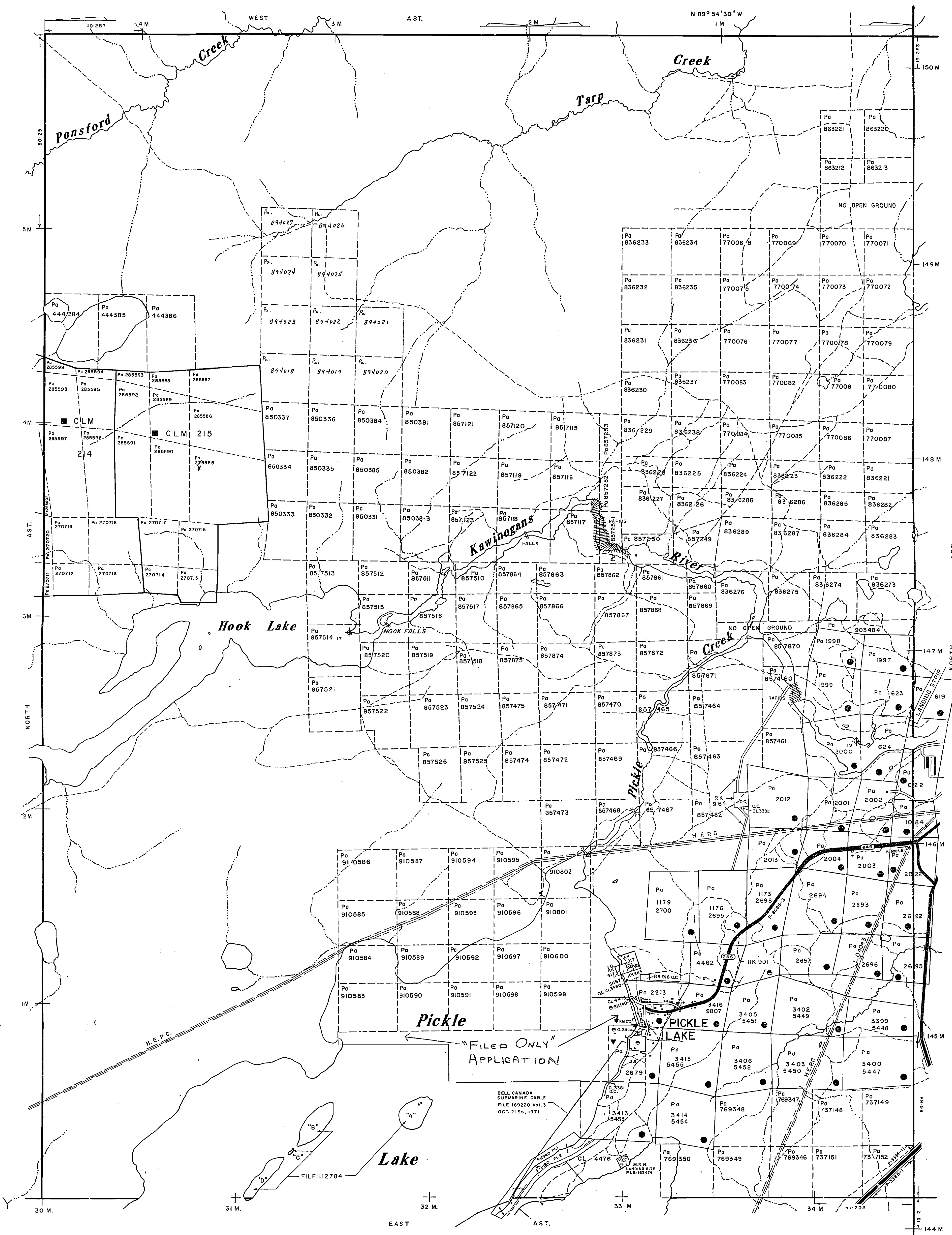
Date SEPTEMBER 1986 Number **G-2181**

REFERENCES

AREAS WITHDRAWN FROM DISPOSITION

M.R.O. - MINING RIGHTS ONLY
 S.R.O. - SURFACE RIGHTS ONLY
 M.+S. - MINING AND SURFACE RIGHTS

Description	Order No.	Date	Disposition	File
New Mylar	Rec'd	Oct 29/86		



LEGEND

- HIGHWAY AND ROUTE No.
- OTHER ROADS
- TRAILS
- SURVEYED LINES:
 - TOWNSHIPS, BASE LINES, ETC.
 - LOTS, MINING CLAIMS, PARCELS, ETC.
- UNSURVEYED LINES:
 - LOT LINES
 - PARCEL BOUNDARY
 - MINING CLAIMS ETC.
- RAILWAY AND RIGHT OF WAY
- UTILITY LINES
- NON-PERENNIAL STREAM
- FLOODING OR FLOODING RIGHTS
- SUBDIVISION OR COMPOSITE PLAN
- RESERVATIONS
- ORIGINAL SHORELINE
- MARSH OR MUSKEG
- MINES
- TRAVERSE MONUMENT

DISPOSITION OF CROWN LANDS

TYPE OF DOCUMENT	SYMBOL
PATENT, SURFACE & MINING RIGHTS	
" SURFACE RIGHTS ONLY	
" MINING RIGHTS ONLY	
LEASE, SURFACE & MINING RIGHTS	
" SURFACE RIGHTS ONLY	
" MINING RIGHTS ONLY	
LICENCE OF OCCUPATION	
ORDER-IN-COUNCIL	
RESERVATION	
CANCELLED	
SAND & GRAVEL	

NOTE: MINING RIGHTS IN PARCELS PATENTED PRIOR TO MAY 6, 1913, VESTED IN ORIGINAL PATENTEE BY THE PUBLIC LANDS ACT, R.S.O. 1970, CHAP. 300, SEC. 63, SUBSEC. 1.

SCALE: 1 INCH = 20 CHAINS

1" = 1320'
 1" = 1/4 MILE
 2" = 1/2 MILE
 4" = 1 MILE

TWP.

CONNELL

TOWNSHIP
PONSFORD
 M.N.R. ADMINISTRATIVE DISTRICT
SIoux LOOKOUT
 MINING DIVISION
PATRICIA
 LAND TITLES / REGISTRY DIVISION
KENORA (PATRICIA PORTION)

Ministry of Natural Resources
 Land Management Branch
 Ontario

REFERENCES

AREAS WITHDRAWN FROM DISPOSITION

- M.R.O. - MINING RIGHTS ONLY
- S.R.O. - SURFACE RIGHTS ONLY
- M.+S. - MINING AND SURFACE RIGHTS

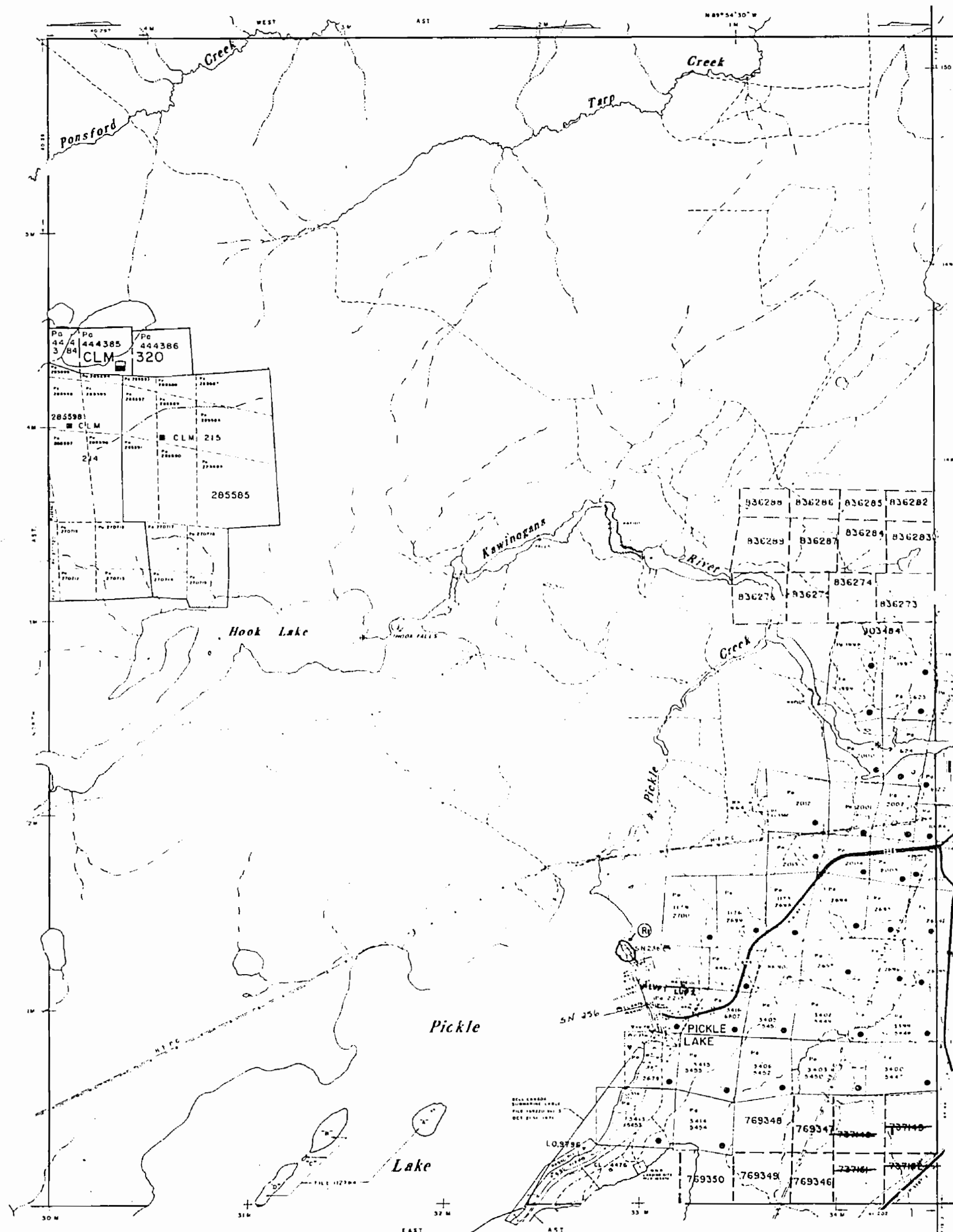
Description	Order No.	Date	Disposition	File
-------------	-----------	------	-------------	------

Ⓡ BEACH PARK W-5L-01/90 NWR

L.U.P. 1 - SEAPLANE BASE

L.U.P. 2 --BELL CANADA

NOTE: THE WHOLE OF PONSFORD TOWNSHIP HAS BEEN INCORPORATED INTO THE TOWNSHIP OF PICKLE LAKE



LEGEND

HIGHWAY AND ROUTE No.	
OTHER ROADS	
TRAILS	
SURVEYED LINES	
TOWNSHIPS, BASE LINES, ETC	
LOTS, MINING CLAIMS, PARCELS, ETC	
UNSURVEYED LINES	
LOT LINES	
PARCEL BOUNDARY	
MINING CLAIMS ETC	
RAILWAY AND RIGHT OF WAY	
UTILITY LINES	
NON PERENNIAL STREAM	
FLOODING OR FLOODING RIGHTS	
SUBDIVISION OR COMPOSITE PLAN	
RESERVATIONS	
ORIGINAL SHORELINE	
MARSH OR MUSKEG	
MINES	
TRAVERSE MONUMENT	

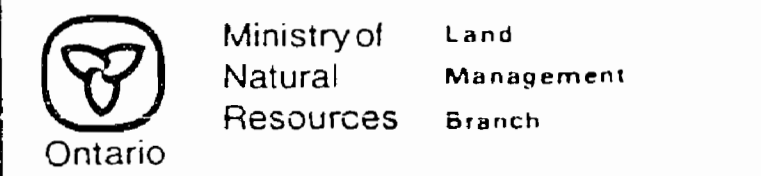
DISPOSITION OF CROWN LANDS

TYPE OF DOCUMENT	SYMBOL
PATENT, SURFACE & MINING RIGHTS	
" SURFACE RIGHTS ONLY	
" MINING RIGHTS ONLY	
LEASE, SURFACE & MINING RIGHTS	
" SURFACE RIGHTS ONLY	
" MINING RIGHTS ONLY	
LICENCE OF OCCUPATION	
ORDER IN COUNCIL	
RESERVATION	
CANCELLED	
SAND & GRAVEL	

NOTE: MINING RIGHTS IN PARCELS PATENTED PRIOR TO MAY 6 1913 VESTED IN ORIGINAL PATENTEE BY THE PUBLIC LANDS ACT R.S.O. 1970 CHAP. 380, SEC. 63 SUBSEC. 1

SCALE 1 INCH = 40 CHAINS

TOWNSHIP
PONSFORD
 M.N.R. ADMINISTRATIVE DISTRICT
 SIOUX LOOKOUT
 MINING DIVISION
 PATRICIA
 LAND TITLES / REGISTRY DIVISION
 KENORA (PATRICIA PORTION)



Date SEPTEMBER 1986
 Number **G-2181**

REFERENCES

AREAS WITHDRAWN FROM DISPOSITION

- M.R.O. - MINING RIGHTS ONLY
- S.R.O. - SURFACE RIGHTS ONLY
- M.+S. - MINING AND SURFACE RIGHTS

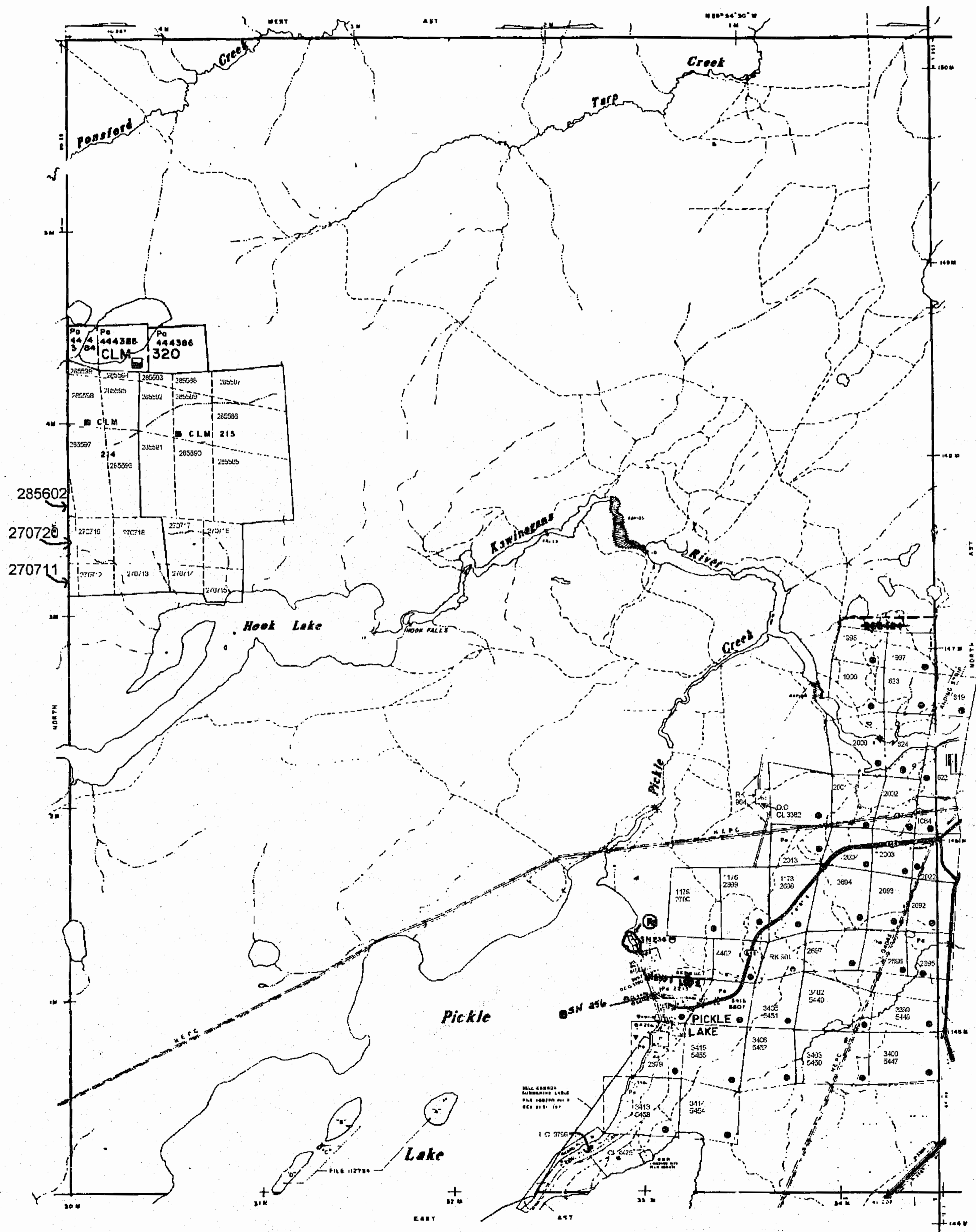
Description	Order No.	Date	Disposition	File
BEACH PARK W-8L-01/90 NWR				

BEACH PARK W-8L-01/90 NWR

L.U.P. 1 - SEAPLANE BASE

L.U.P. 2 - BELL CANADA

NOTE: THE WHOLE OF PONSFORD TOWNSHIP HAS BEEN INCORPORATED INTO THE TOWNSHIP OF PICKLE LAKE



(CONNELL TOWNSHIP) Tarp Lake G2831

LEGEND

HIGHWAY AND ROUTE No	
OTHER ROADS	
TRAILS	
SURVEYED LINES	
TOWNSHIPS, BASE LINES, ETC	
LOTS, MINING CLAIMS, PARCELS, ETC	
UNSURVEYED LINES	
LOT LINES	
PARCEL BOUNDARY	
MINING CLAIMS ETC	
RAILWAY AND RIGHT OF WAY	
UTILITY LINES	
NON-PERENNIAL STREAM	
FLOODING OR FLOODING RIGHTS	
SUBDIVISION OR COMPOSITE PLAN	
RESERVATIONS	
ORIGINAL SHORELINE	
MARSH OR MUSKEG	
MINES	
TRAVERSE MONUMENT	

DISPOSITION OF CROWN LANDS

TYPE OF DOCUMENT	SYMBOL
PATENT, SURFACE & MINING RIGHTS	
" SURFACE RIGHTS ONLY	
" MINING RIGHTS ONLY	
LEASE, SURFACE & MINING RIGHTS	
" SURFACE RIGHTS ONLY	
" MINING RIGHTS ONLY	
LICENCE OF OCCUPATION	
ORDER-IN-COUNCIL	
RESERVATION	
CANCELLED	
SAND & GRAVEL	

NOTE: MINING RIGHTS IN PARCELS PATENTED PRIOR TO MAY 8 1912, VESTED IN ORIGINAL PATENTEE BY THE PUBLIC LANDS ACT R.S.O. 1970 CHAP 380 SEC 63, SUBSEC 1

SCALE: 1 INCH = 40 CHAINS

TOWNSHIP

PONSFORD

M.N.R. ADMINISTRATIVE DISTRICT

SIoux LOOKOUT

MINING DIVISION

PATRICIA

LAND TITLES / REGISTRY DIVISION

KENORA (PATRICIA PORTION)



Date SEPTEMBER 1986

Number

G-2181

REFERENCES

AREAS WITHDRAWN FROM DISPOSITION

- M.R.O. - MINING RIGHTS ONLY
- S.R.O. - SURFACE RIGHTS ONLY
- M.+S. - MINING AND SURFACE RIGHTS

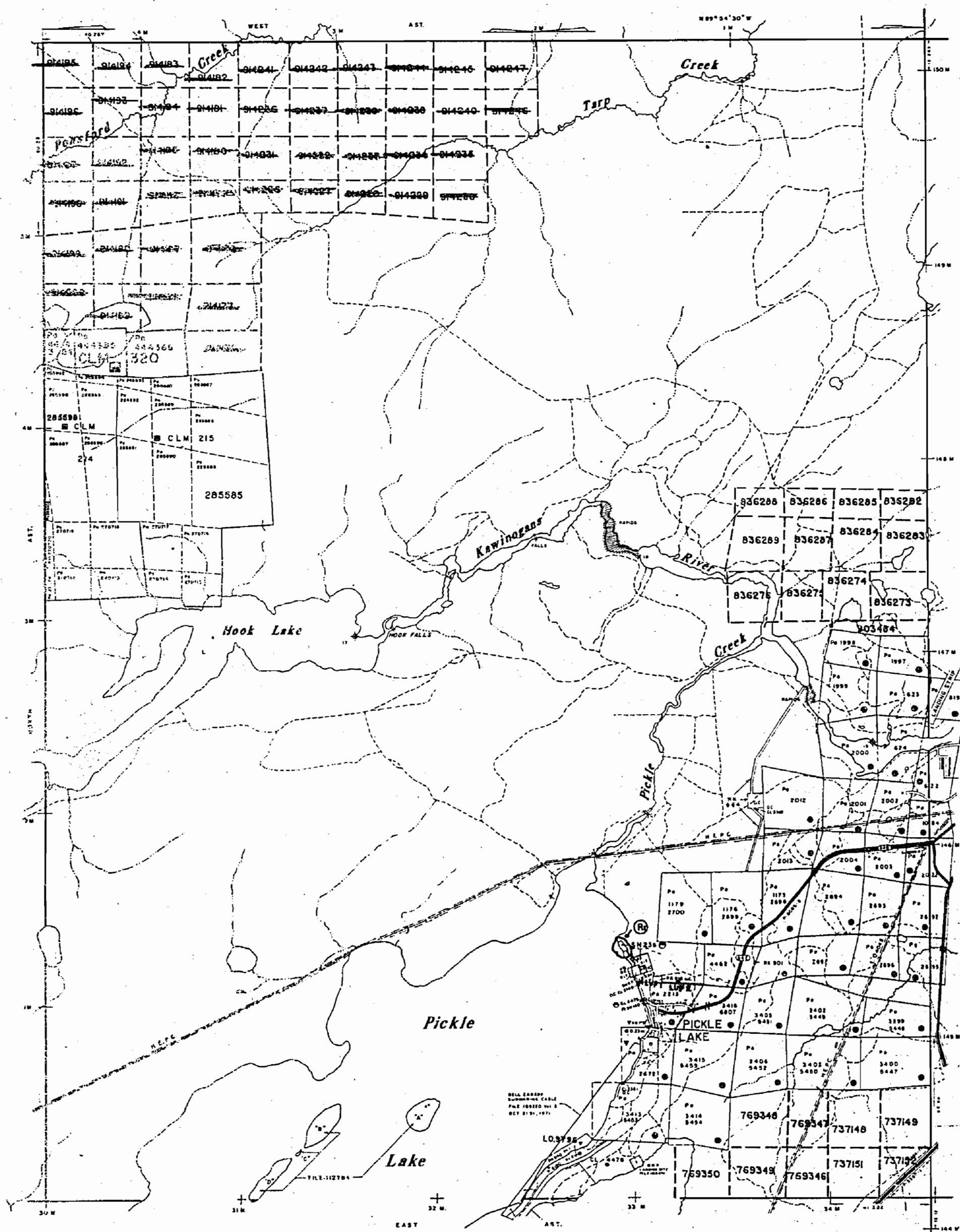
Description	Order No.	Date	Disposition	File
-------------	-----------	------	-------------	------

SEARCH PARK W-31-01/50 N.P.S.

L.U.P. 1 - SEAPLANE BASE

L.U.P. 2 - BELL CANADA

NOTE: THE WHOLE OF PONSFORD TOWNSHIP HAS BEEN INCORPORATED INTO THE TOWNSHIP OF PICKLE LAKE



(CONNELL TOWNSHIP) Tarp Lake G-2181

LEGEND

- HIGHWAY AND ROUTE No.
- OTHER ROADS
- TRAILS
- SURVEYED LINES:
 - TOWNSHIPS, BASE LINES, ETC.
 - LOTS, MINING CLAIMS, PARCELS, ETC.
- UNSURVEYED LINES:
 - LOT LINES
 - PARCEL BOUNDARY
 - MINING CLAIMS ETC.
- RAILWAY AND RIGHT OF WAY
- UTILITY LINES
- NON-PERENNIAL STREAM
- FLOODING OR FLOODING RIGHTS
- SUBDIVISION OR COMPOSITE PLAN
- RESERVATIONS
- ORIGINAL SHORELINE
- MARSH OR MUSKEG
- MINES
- TRAVERSE MONUMENT

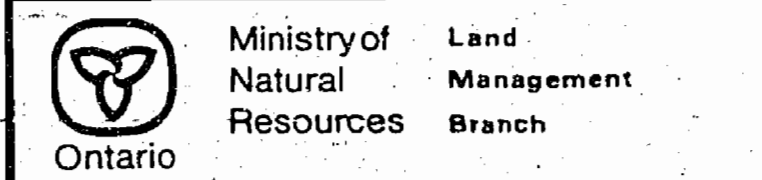
DISPOSITION OF CROWN LANDS

TYPE OF DOCUMENT	SYMBOL
PATENT, SURFACE & MINING RIGHTS	
" SURFACE RIGHTS ONLY	
" MINING RIGHTS ONLY	
LEASE, SURFACE & MINING RIGHTS	
" SURFACE RIGHTS ONLY	
" MINING RIGHTS ONLY	
LICENCE OF OCCUPATION	
ORDER-IN-COUNCIL	
RESERVATION	
CANCELLED	
SAND & GRAVEL	

NOTE: MINING RIGHTS IN PARCELS PATENTED PRIOR TO MAY 6, 1913, VESTED IN ORIGINAL PATENTEE BY THE PUBLIC LANDS ACT, R.S.O. 1970, CHAP. 380, SEC. 63, SUBSEC 1.

SCALE: 1 INCH = 40 CHAINS.

TOWNSHIP
PONSFORD
 M.N.R. ADMINISTRATIVE DISTRICT
 SIOUX LOOKOUT
 MINING DIVISION
 PATRICIA
 LAND TITLES / REGISTRY DIVISION
 KENORA (PATRICIA PORTION)



Date SEPTEMBER 1986
 Number **G-2181**