

WUNNUMMIN LAKE - M.2595

AREA OF

RITZER LAKE

DISTRICT OF
KENORA
PATRICIA PORTION

PATRICIA
MINING DIVISION

SCALE: 1-INCH = 40 CHAINS

LEGEND

PATENTED LAND	Ⓟ or Ⓠ
PATENTED FOR SURFACE RIGHTS ONLY	Ⓟ
LEASES	Ⓛ
LICENSE OF OCCUPATION	L.O.
CROWN LAND SALE	C.S.
LOCATED LAND	Loc.
CANCELLED	C.
MINING RIGHTS ONLY	M.R.O.
SURFACE RIGHTS ONLY	S.R.O.
HIGHWAY & ROUTE No.	17
ROADS	—
TRAILS	- - - -
RAILWAYS	—+—+—+—+—
POWER LINES	—+—+—+—+—
MARSH OR MUSKEG	⊘
MINES	✕

*used only with summer resort locations or when space is limited

NOTES

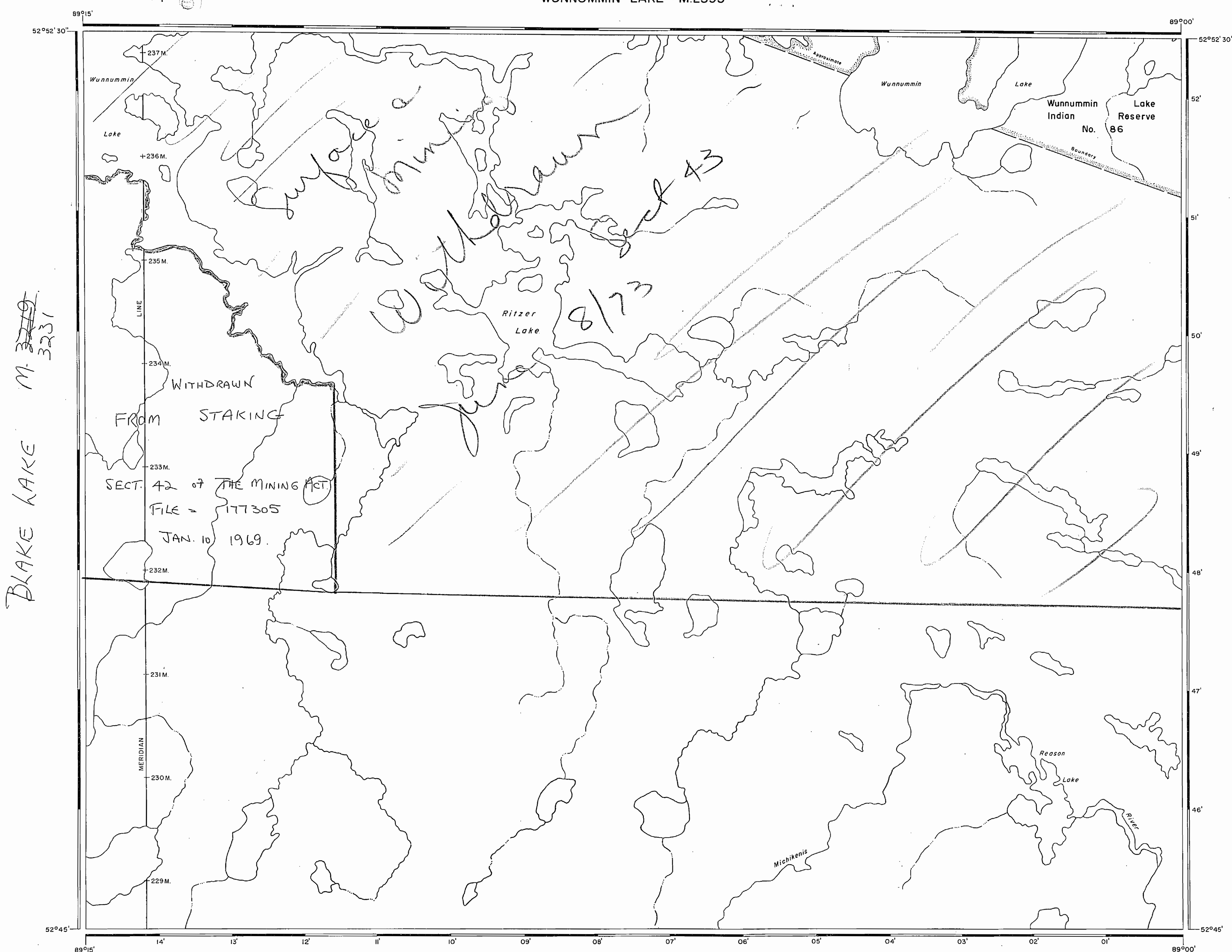
400' Surface Rights Reservation Around the Shores of All Lakes and Rivers

PATRICIA
MINING DIV.
RECEIVED
OCT 20 1970
AM 10:09 10:11 12:12 3:45 5:53 PM

62186

PLAN NO. M.3219

DEPARTMENT OF MINES
— ONTARIO —



WINISK RIVER (WEST PART) - M.2556

MICHIKENIS RIVER - M.3216

Blow-up

WUNNUMMIN LAKE - M.2595

AREA OF

RITZER LAKE

DISTRICT OF
KENORA
PATRICIA PORTION

PATRICIA
MINING DIVISION

SCALE: 1-INCH = 40 CHAINS

LEGEND

PATENTED LAND	Ⓟ or Ⓠ
PATENTED FOR SURFACE RIGHTS ONLY	Ⓟ or Ⓠ
LEASES	Ⓟ or Ⓠ
LICENSE OF OCCUPATION	L.O.
PROSPECTING AND SALE	C.S.
LOCATED LAND	Loc.
CANCELLED	C.
MINING RIGHTS ONLY	M.R.O.
SURFACE RIGHTS ONLY	S.R.O.
HIGHWAY & ROUTE No.	17
ROADS	—
TRAILS	---
RAILWAYS	—+—
POWER LINES	—+—
MARSH OR MUSKEG	⊗
MINES	⊗

used only with summer resort locations or when
quartz is found

NOTES

200 Surface Rights Reservations Around the Shores of All Lakes
in Ontario

DATE OF ISSUE
NOV 24 1973

2

6-2186

NATIONAL TOPOGRAPHIC SERIES 53 A

PLAN NO. M.3219

MINISTRY OF NATURAL RESOURCES
SURVEY AND MAPPING BRANCH

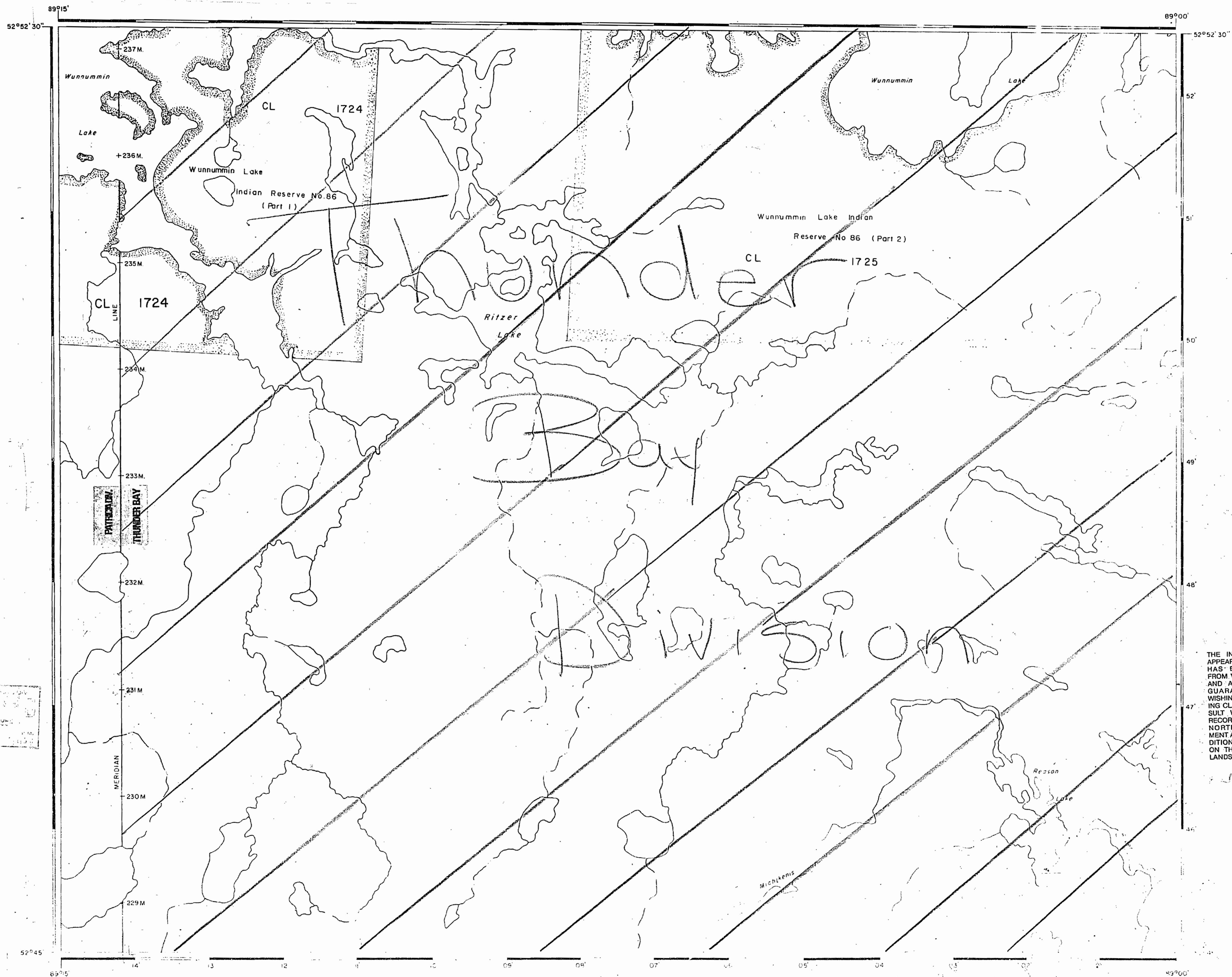
BLAKE LAKE - M.3231

WINISK RIVER (WEST PART) - M.2556

MICHIKENIS RIVER - M.3216

Blow-up

WUNNUMMIN LAKE - G-2272



BLAKE LAKE G-1960

WINISK RIVER (WEST PART) - G-461

MICHIKENIS RIVER - G-2125

PATRICIA / THUNDER BAY
MAY 26 1984

LEGEND

- HIGHWAY AND ROUTE No.
- OTHER ROADS
- TRAILS
- SURVEYED LINES
- TOWNSHIPS, BASE LINES, ETC.
- LOTS, MINING CLAIMS, PARCELS, ETC.
- UNSURVEYED LINES
- LOT LINES
- PARCEL BOUNDARY
- MINING CLAIMS, ETC.
- RAILWAY AND RIGHT OF WAY
- UTILITY LINES
- NON PERENNIAL STREAM
- FLOODING OR FLOODING RIGHTS
- SUBDIVISION OR COMPOSITE PLAN RESERVATIONS
- ORIGINAL SHORELINE
- MARSH OR MUSKEG
- MINES
- TRAVERSE MONUMENT

DISPOSITION OF CROWN LANDS

TYPE OF DOCUMENT	SYMBOL
PATENT, SURFACE & MINING RIGHTS	
SURFACE RIGHTS ONLY	
MINING RIGHTS ONLY	
LEASE, SURFACE & MINING RIGHTS	
SURFACE RIGHTS ONLY	
MINING RIGHTS ONLY	
LICENCE OF OCCUPATION	
ORDER IN COUNCIL	
RESERVATION	
CANCELLED	
SAND & GRAVEL	

NOTE: MINING RIGHTS IN PARCELS PATENTED PRIOR TO MAY 6 1913, VESTED IN ORIGINAL PATENTEE BY THE PUBLIC LANDS ACT, R.S.O. 1970, CHAP. 380, SEC. 63, SUBSEC. 1

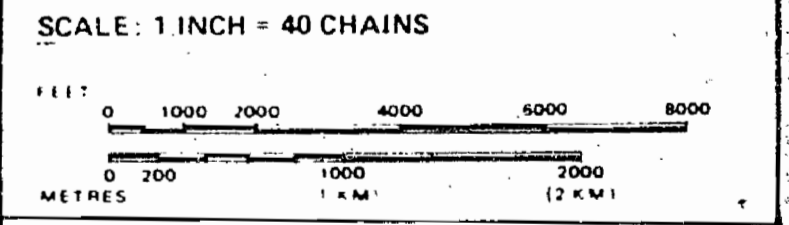
REFERENCES

AREAS WITHDRAWN FROM DISPOSITION

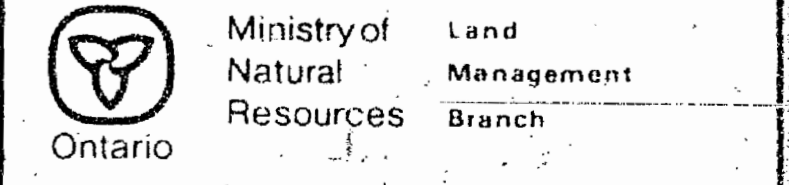
- M.R.O. - MINING RIGHTS ONLY
- S.R.O. - SURFACE RIGHTS ONLY
- M.+S. - MINING AND SURFACE RIGHTS

Description	Order No.	Date	Disposition	File

THE INFORMATION THAT APPEARS ON THIS MAP HAS BEEN COMPILED FROM VARIOUS SOURCES, AND ACCURACY IS NOT GUARANTEED. THOSE WISHING TO STAKE MINING CLAIMS SHOULD CONSULT WITH THE MINING RECORDER, MINISTRY OF NORTHERN DEVELOPMENT AND MINES, FOR ADDITIONAL INFORMATION ON THE STATUS OF THE LANDS SHOWN HEREON.

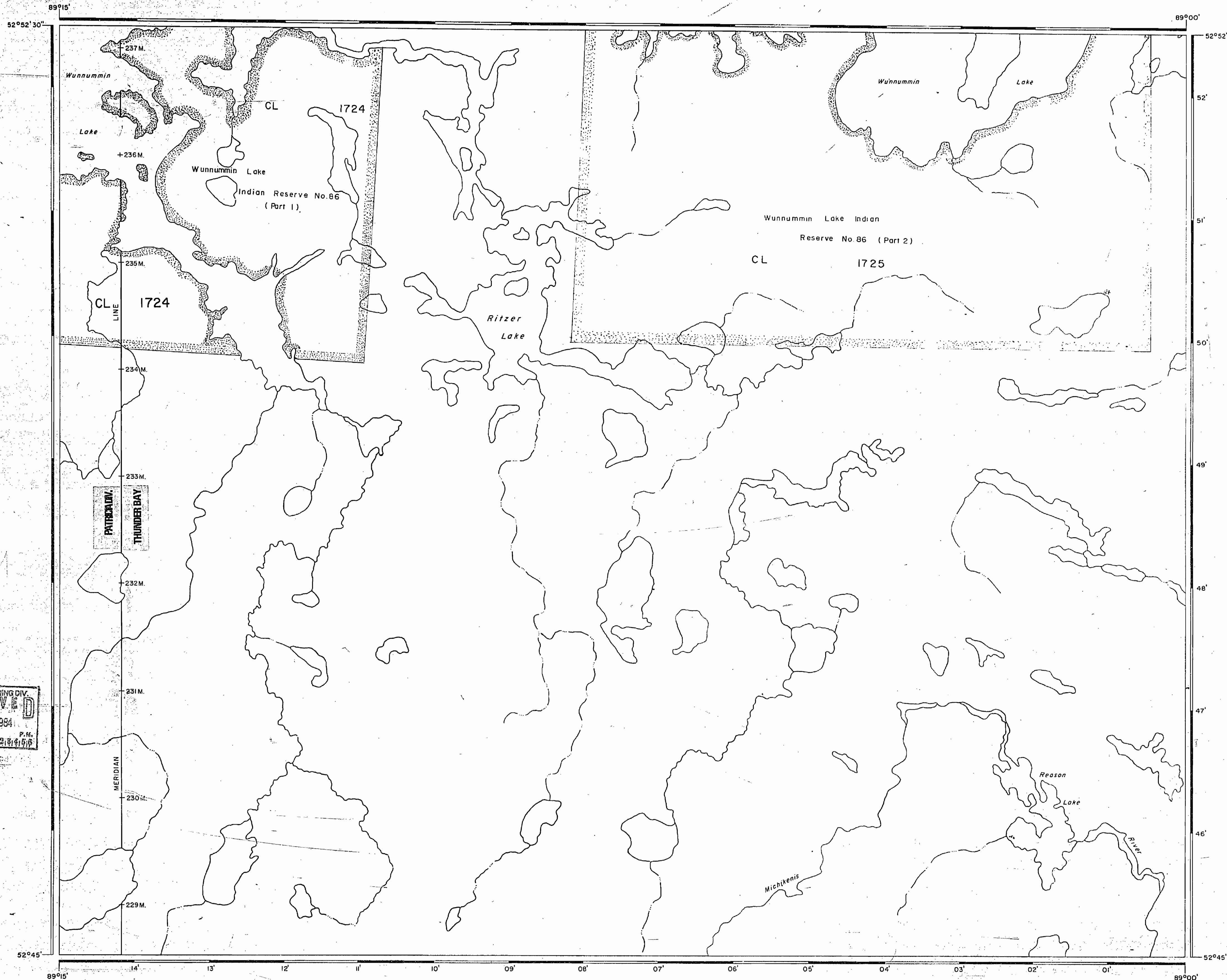


AREA
RITZER LAKE
M.N.R. ADMINISTRATIVE DISTRICT
SIOUX LOOKOUT
MINING DIVISION
PATRICIA / THUNDER BAY
LAND TITLES / REGISTRY DIVISION
KENORA (PATRICIA PORTION)



Date: JANUARY, 1984
Number: **G-2186**

WUNNUMMIN LAKE - G-2272



BLAKE LAKE - G-1960

WINISK RIVER (WEST PART) - G-461

PATRICIA MINING DIV.
RECEIVED
 MAY 25 1984
 P.M.
 71619101112113141516

LEGEND

- HIGHWAY AND ROUTE No.
- OTHER ROADS
- TRAILS
- SURVEYED LINES:
 TOWNSHIPS, BASE LINES, ETC.
- LOTS, MINING CLAIMS, PARCELS, ETC.
- UNSURVEYED LINES:
 LOT LINES
- PARCEL BOUNDARY
- MINING CLAIMS ETC.
- RAILWAY AND RIGHT OF WAY
- UTILITY LINES
- NON-PERENNIAL STREAM
- FLOODING OR FLOODING RIGHTS
- SUBDIVISION OR COMPOSITE PLAN
- RESERVATIONS
- ORIGINAL SHORELINE
- MARSH OR MUSKEG
- MINES
- TRAVERSE MONUMENT

DISPOSITION OF CROWN LANDS

TYPE OF DOCUMENT	SYMBOL
PATENT, SURFACE & MINING RIGHTS	
" SURFACE RIGHTS ONLY	
" MINING RIGHTS ONLY	
LEASE, SURFACE & MINING RIGHTS	
" SURFACE RIGHTS ONLY	
" MINING RIGHTS ONLY	
LICENCE OF OCCUPATION	
ORDER-IN-COUNCIL	
RESERVATION	
CANCELLED	
SAND & GRAVEL	
LAND USE PERMITS FOR COMMERCIAL TOURISM/OUTPOST CAMPS	

NOTE: MINING RIGHTS IN PARCELS PATENTED PRIOR TO MAY 6, 1913, VESTED IN ORIGINAL PATENTEES BY THE PUBLIC LANDS ACT, R.S.O. 1970, CHAP. 380, SEC. 83, SUBSEC. 1.

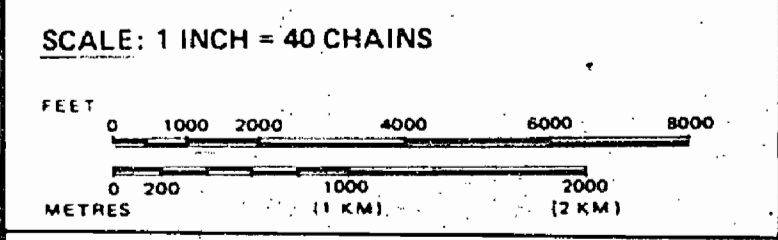
REFERENCES

AREAS WITHDRAWN FROM DISPOSITION

- M.R.O. - MINING RIGHTS ONLY
- S.R.O. - SURFACE RIGHTS ONLY
- M.+S. - MINING AND SURFACE RIGHTS

Description	Order No.	Date	Disposition	File
NOTICE:				
This map falls within the Shigogama Interim Planning Board Area.				
For more information please contact the Mining Recorder.				

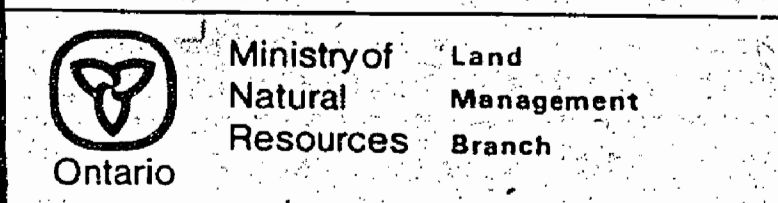
THE INFORMATION THAT APPEARS ON THIS MAP HAS BEEN COMPILED FROM VARIOUS SOURCES, AND ACCURACY IS NOT GUARANTEED. THOSE WISHING TO STAKE MINING CLAIMS SHOULD CONSULT WITH THE MINING RECORDER, MINISTRY OF NORTHERN DEVELOPMENT AND MINES, FOR ADDITIONAL INFORMATION ON THE STATUS OF THE LANDS SHOWN HEREON.



AREA

RITZER LAKE

M.N.R. ADMINISTRATIVE DISTRICT
 SIOUX LOOKOUT
 MINING DIVISION
 PATRICIA / THUNDER BAY
 LAND TITLES / REGISTRY DIVISION
 KENORA (PATRICIA PORTION)



Date: JANUARY, 1984 Number: **G-2186**

MICHIKENIS RIVER - G-2125