

G. 3323
M. 1377

(Sayer)
TOWNSHIP 1D

SAULT STE MARIE MINING DIVISION

DISTRICT OF ALGOMA

Scale: 40 Chains = 1 Inch.

ONTARIO

MINISTRY OF NATURAL RESOURCES

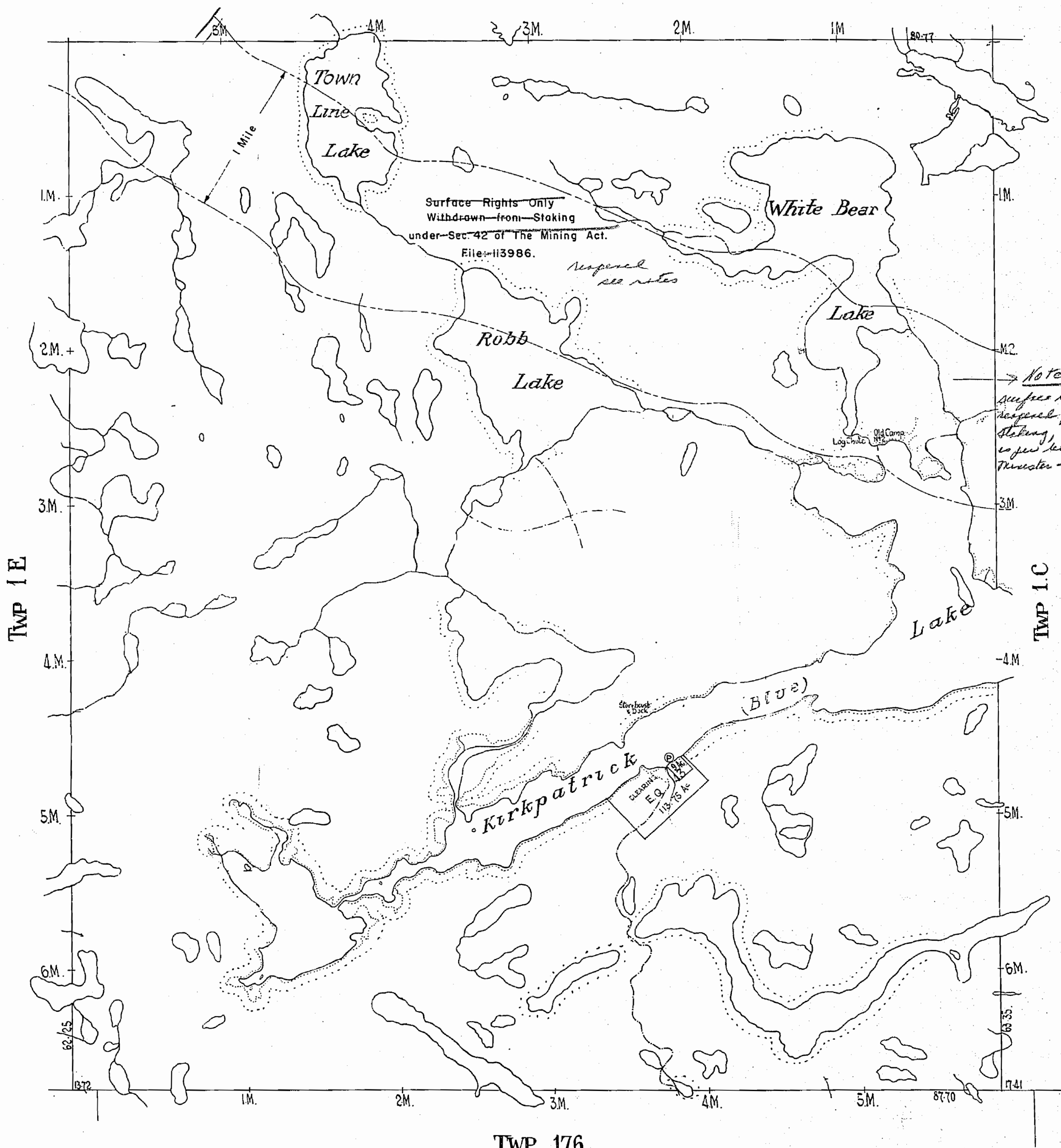
SURVEYS AND MAPPING BRANCH

TWP. 2.D.

NOTE: This twp is covered by Multiple Pit Permit #4077 issued to Midway Lumber Mills Ltd. ISSUED Nov 10/78

PORCUPINE MINING DIVISION
RECEIVED
NOV 15 1973
AM 7 18 19 10 11 12 1 1 2 1 3 1 4 1 5 1 6 PM

North Ast.



TWP 176

SAND AND GRAVEL ON ALL UNPATENTED MINING CLAIMS IN THIS TOWNSHIP RESERVED TO THE CROWN.

400' SURFACE RIGHTS RESERVATION AROUND ALL LAKES & RIVERS

DATE OF ISSUE
DEC 31 1981
Ministry of Natural Resources
TORONTO

TOWNSHIP OF

SAYER

(TP. 1D)

SAULT STE MARIE MINING DIVISION

~~M.1377~~
G. 3323

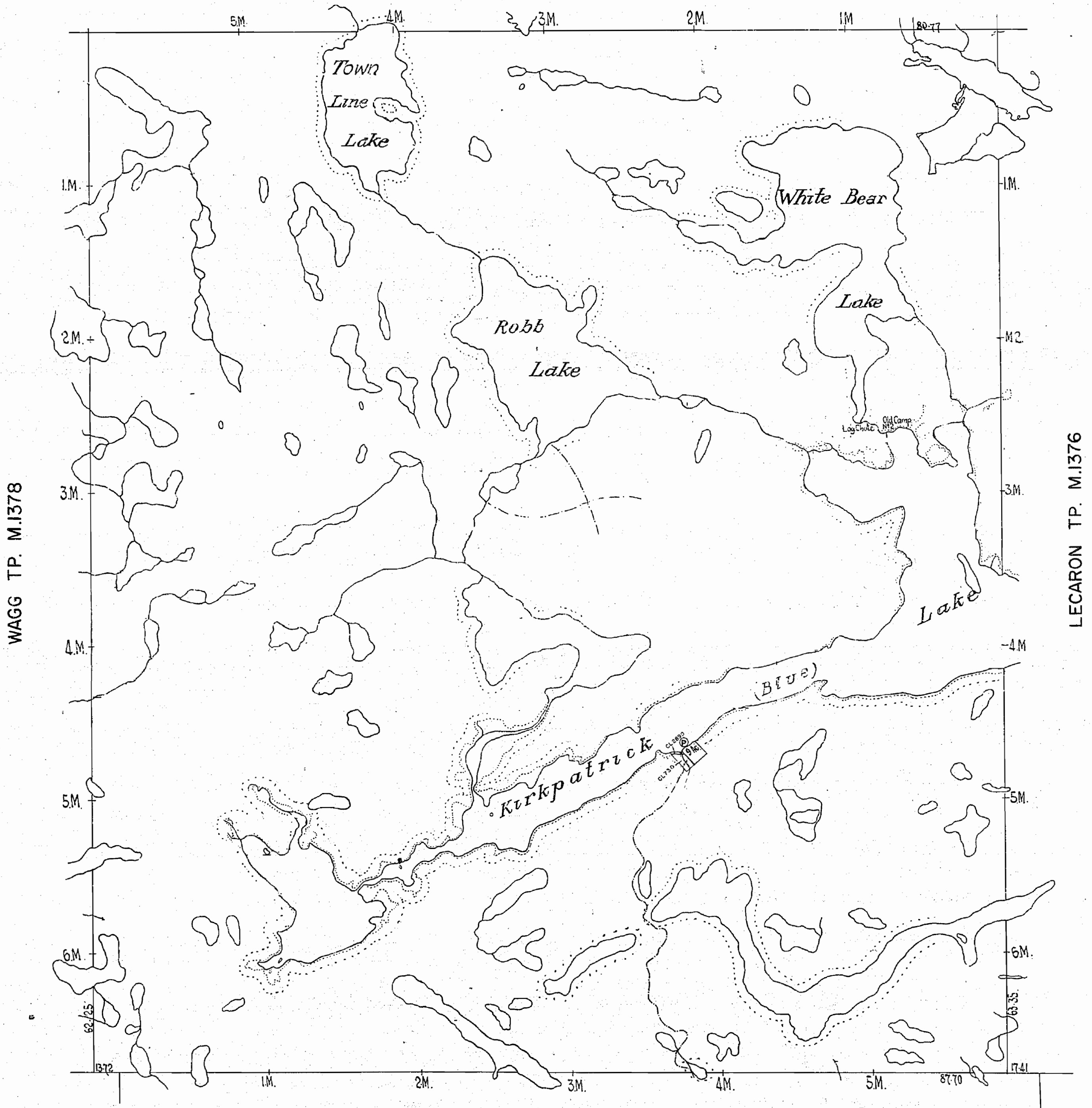
DISTRICT OF ALGOMA

Scale - 40 Chains = 1 Inch.

ONTARIO
MINISTRY OF NATURAL RESOURCES
SURVEYS AND MAPPING BRANCH

SIMONS TP. M.1383

North Ast.



VARLEY TP. M.1613

SAND AND GRAVEL ON ALL UNPATENTED MINING CLAIMS IN THIS TOWNSHIP RESERVED TO THE CROWN.

400' SURFACE RIGHTS RESERVATION AROUND ALL LAKES & RIVERS

Revised by mylar Sept 4/84.

SAULT STE MARIE
RECEIVED
SEP 04 1984
A.M. P.M.
7:00 9:10 11:12 1:2 3:4 5:6

M.1377
G. 3323

TOWNSHIP OF
SAYER
(TP. 1D)
SAULT STE MARIE MINING DIVISION

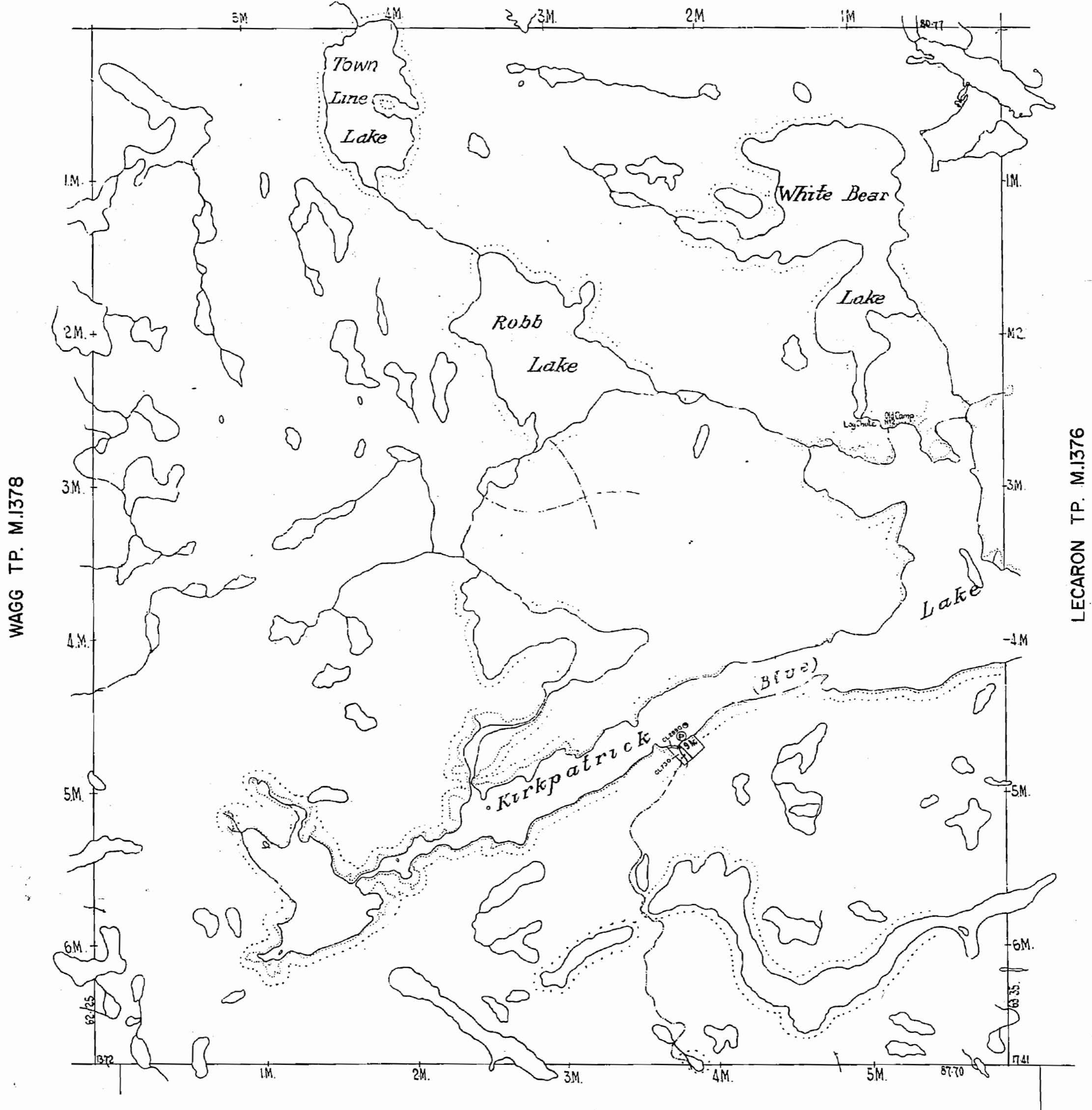
DISTRICT OF ALGOMA

Scale: 40 Chains - 1 Inch.

ONTARIO
MINISTRY OF NATURAL RESOURCES
SURVEYS AND MAPPING BRANCH

North - Ast.

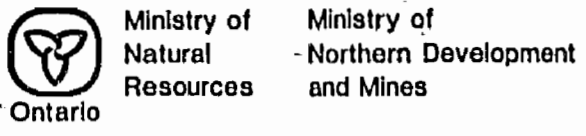
SIMONS TP. M.1383



400' SURFACE RIGHTS RESERVATION AROUND ALL LAKES & RIVERS

SAND AND GRAVEL ON ALL UNPATENTED MINING CLAIMS IN THIS TOWNSHIP RESERVED TO THE CROWN.

Replaced by G. 3323 - May 1984 M.S.



SYMBOLS

Boundary
Township, Meridian, Baseline
Road allowance; surveyed
shoreline
Lot/Concession; surveyed
unsurveyed
Parcel; surveyed
unsurveyed
Right-of-way; road
railway
utility
Reservation
Cliff, Pit, Pile
Contour
Interpolated
Approximate
Depression
Control point (horizontal)
Flooded land
Mine bond frame
Pipeline (above ground)
double track
abandoned
Road; highway, county, township
access
trail, bush
Shoreline (original)
Transmission line
Wooded area

DISPOSITION OF CROWN LANDS

Patent
Surface & Mining Rights
Surface Rights Only
Mining Rights Only
Lease
Surface & Mining Rights
Surface Rights Only
Mining Rights Only
Licence of Occupation
Order-in-Council
Cancelled
Reservation
Sand & Gravel

AREAS WITHDRAWN FROM DISPOSITION

- MRO - Mining Rights Only
- SRO - Surface Rights Only
- M + S - Mining and Surface Rights

Description	Order No.	Date	Disposition	File
-------------	-----------	------	-------------	------

INDEX TO LAND DISPOSITION

PLAN
G-3323

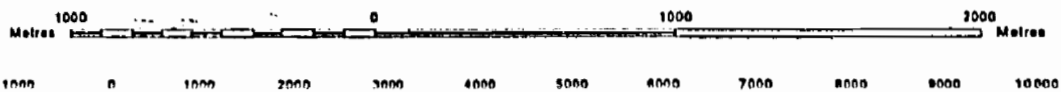
TOWNSHIP
SAYER

M.N.R. ADMINISTRATIVE DISTRICT
BLIND RIVER

MINING DIVISION
SAULT STE. MARIE

LAND TITLES/REGISTRY DIVISION
ALGOMA

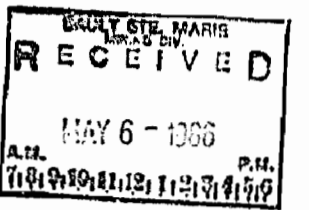
Scale 1:20 000



Contour Interval 10 Metres

Map base and land disposition drafting by Surveys and Mapping Branch, Ministry of Natural Resources.

The disposition of land, location of lot fabric and parcel boundaries on this index was compiled for administrative purposes only.





INDEX TO LAND DISPOSITION

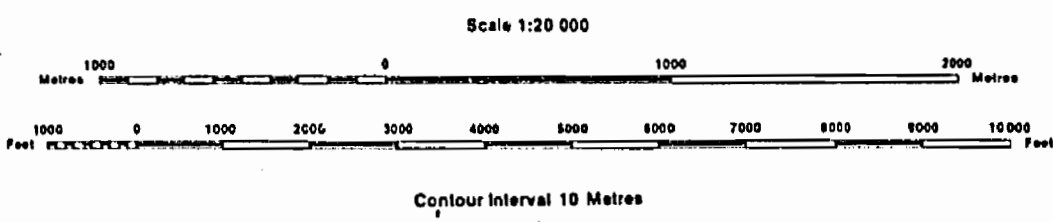
PLAN

G-3323

TOWNSHIP

SAYER

M.N.R. ADMINISTRATIVE DISTRICT
BLIND RIVER
 MINING DIVISION
SAULT STE. MARIE
 LAND TITLES/REGISTRY DIVISION
ALGOMA



Map base and land disposition drafted by Surveys and Mapping Branch, Ministry of Natural Resources.

The disposition of land, location of lot fabric and parcel boundaries on this index was compiled for administrative purposes only.

SYMBOLS

Boundary
Township, Meridian, Baseline
Road allowance; surveyed, shoreline
Lot/Concession; surveyed, unsurveyed
Parcel; surveyed, unsurveyed
Right-of-way; road, railway, utility
Reservation
Cliff, Pit, Pile
Contour
Interpolated, Approximate, Depression
Control point (horizontal)
Flooded land
Mine head frame
Pipeline (above ground)
Railway; single track, double track, abandoned
Road; highway, county, township access, trail, bush
Shoreline (original)
Transmission line
Wooded area

DISPOSITION OF CROWN LANDS

Patent
Surface & Mining Rights
Surface Rights Only
Mining Rights Only
Lease
Surface & Mining Rights
Surface Rights Only
Mining Rights Only
Licence of Occupation
Order-in-Council
Cancelled
Reservation
Sand & Gravel

AREAS WITHDRAWN FROM DISPOSITION

MRO - Mining Rights Only
SRO - Surface Rights Only
M + S - Mining and Surface Rights

THE INFORMATION THAT APPEARS ON THIS MAP HAS BEEN COMPILED FROM VARIOUS SOURCES, AND ACCURACY IS NOT GUARANTEED. THOSE WISHING TO STAKE MINING CLAIMS SHOULD CONSULT WITH THE REGULAR MINISTRY OF NORTHERN DEVELOPMENT AND MINES, FOR ADDITIONAL INFORMATION ON THE STATUS OF THE LANDS SHOWN HEREON.

The 1980 Magnetic Bearing is approximately 2% Annual Change Decreasing



1377

TOWNSHIP 1.D. (SAYER)

SAULT STE MARIE MINING DIVISION

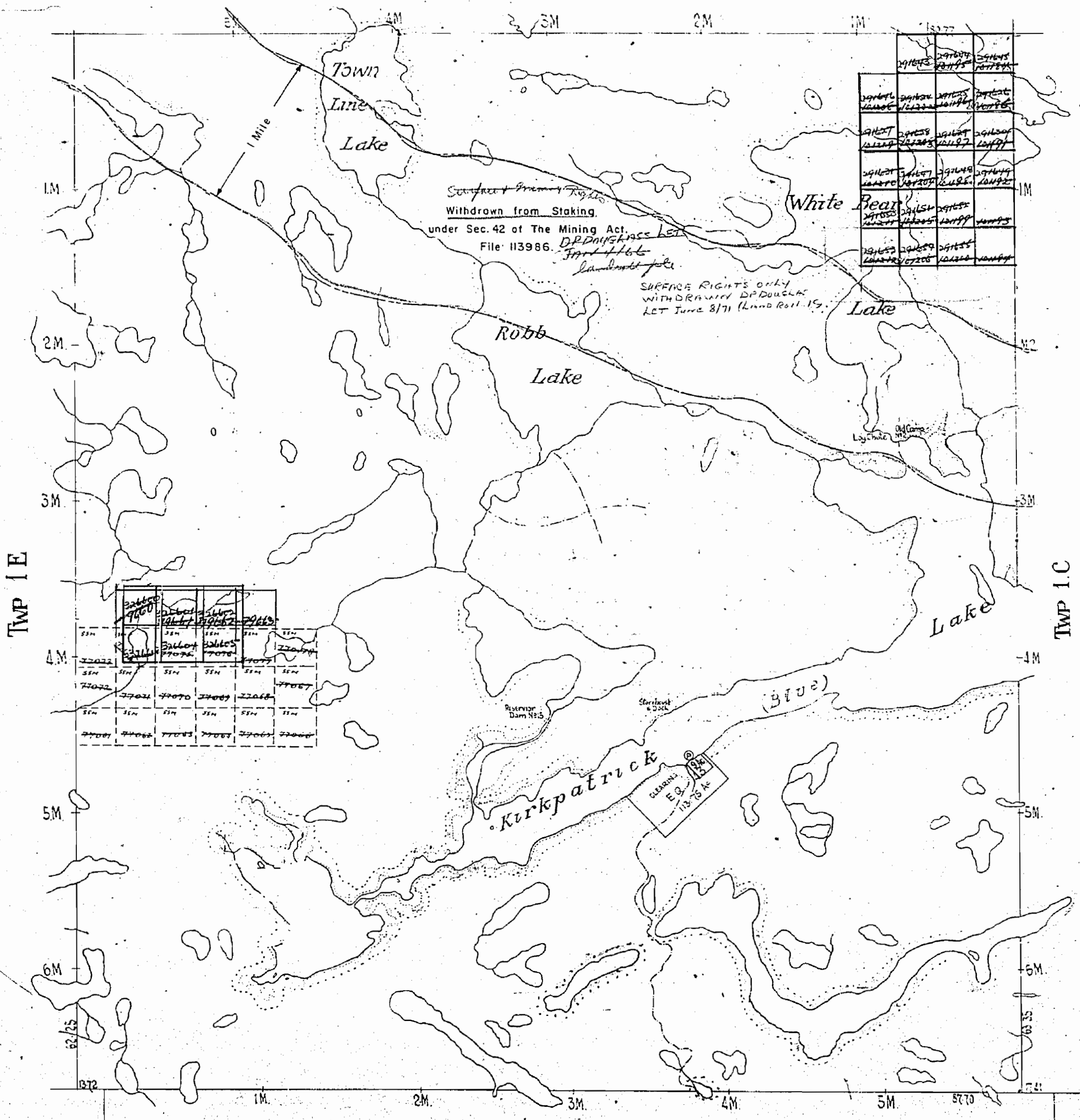
DISTRICT OF ALGOMA

Scale - 40 Chains - 1 Inch.

M. 1377

TWP. 2.D.

North Ast.



TWP 176

SAND AND GRAVEL ON ALL UNPATENTED MINING CLAIMS IN THIS TOWNSHIP RESERVED TO THE CROWN

100' SURFACE RIGHTS RESERVATION AROUND ALL LAKES & RIVERS

1377

TOWNSHIP 1 D

SAULT STE MARIE MINING DIVISION

(SAYER)

DISTRICT OF ALGOMA

Scale - 40 Chains - 1 inch

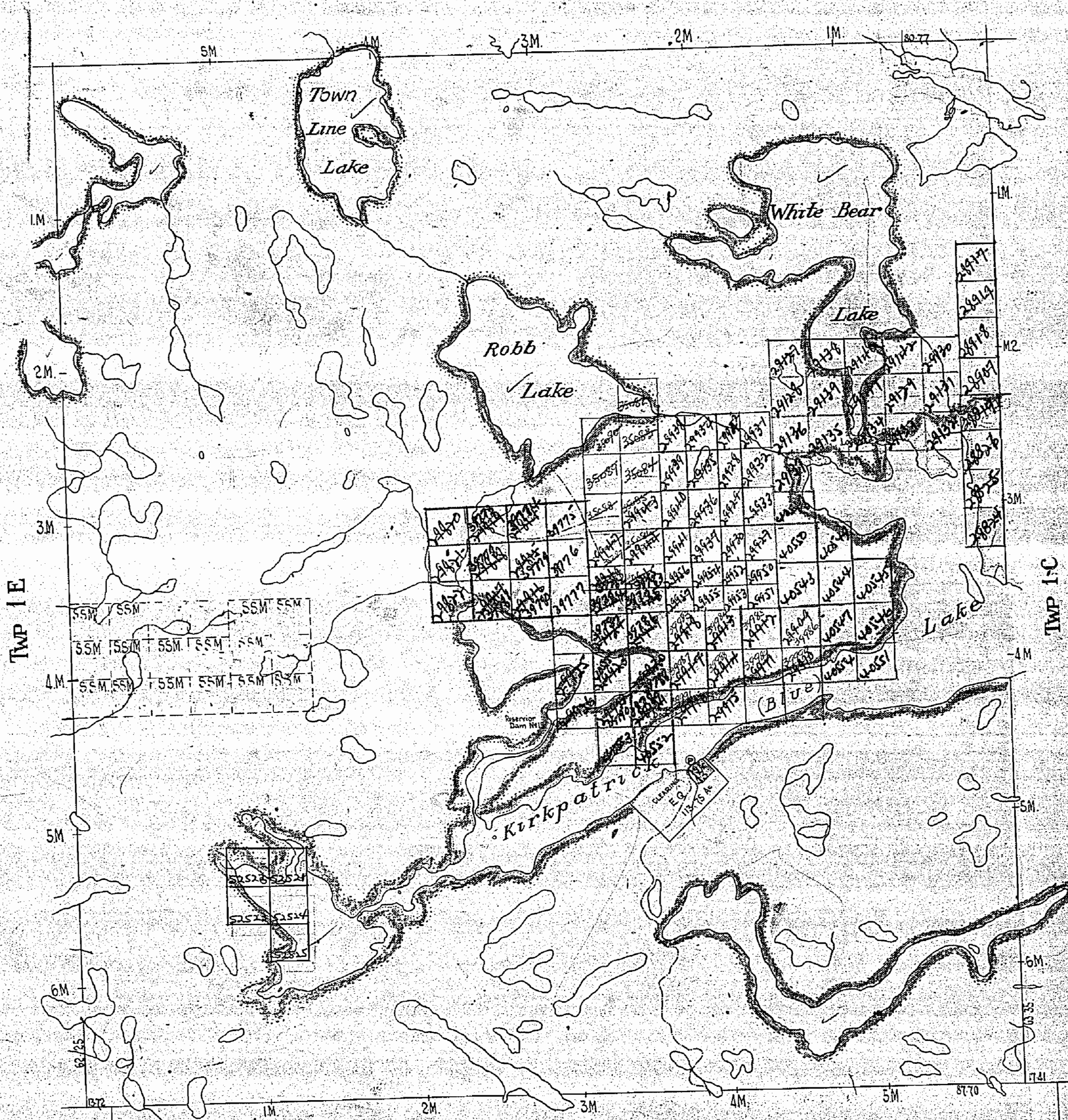
all claims accepted exclusive of sand & gravel
P.M. letter Aug 9/56

OFFICE MAP

M. 1377

TWP. 2 D.

North Arrow



Surface reservations 200' wide by Dept of L. & F. shown hereon thus ~~-----~~

M 22

D. 1 97

1377

TOWNSHIP 1 D

TOWNSHIP 1.D.

SAULT STE MARIE MINING DIVISION (SAYER)

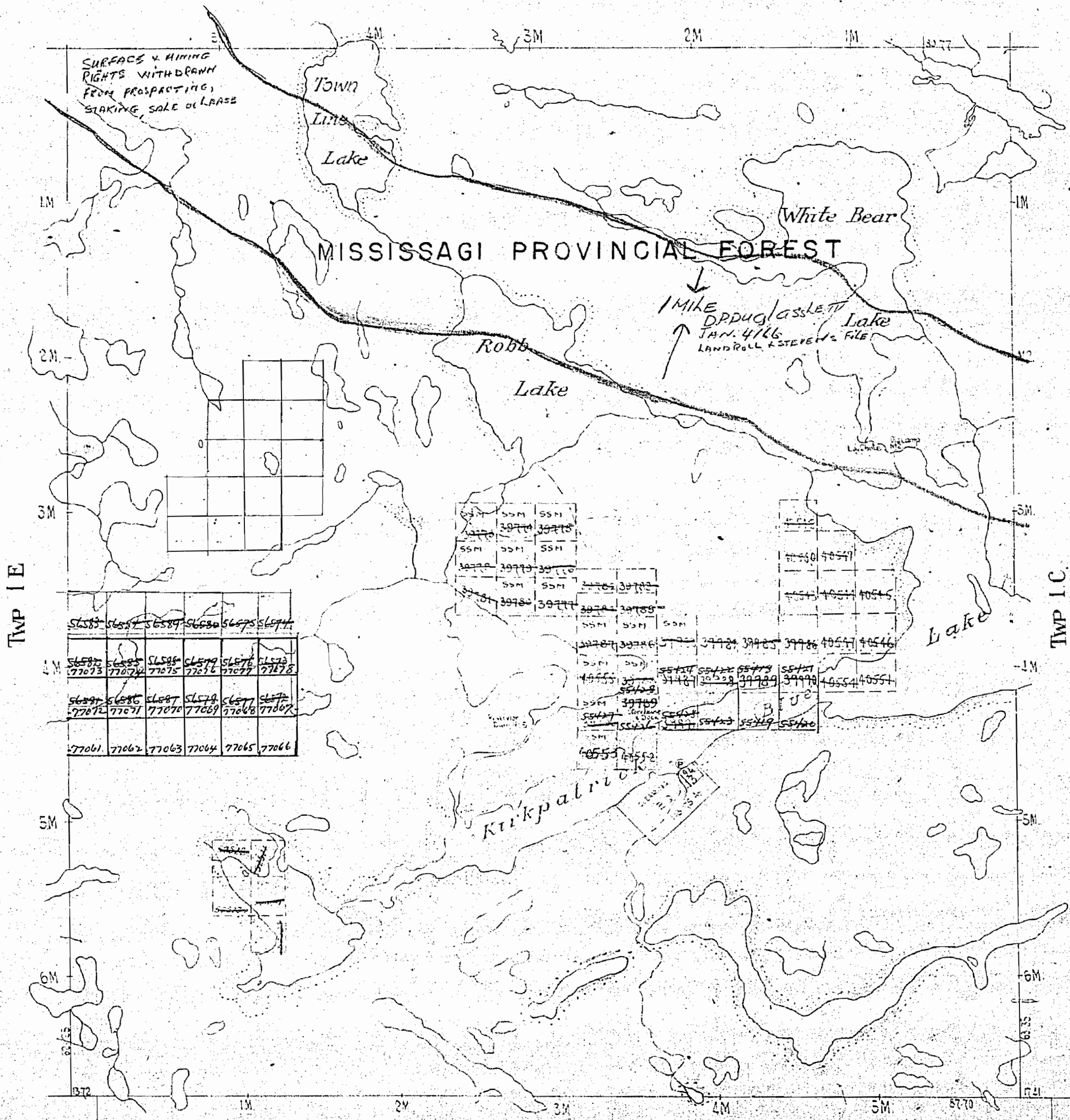
DISTRICT OF ALGOMA

M. 1377

Scale - 40 Chains - 1 Inch.

*All claims accepted
exclusive of Sand & Gravel
JRM letter Aug 9/86*

TWP. 2.D.



TWP 176

SAND AND GRAVEL ON ALL UNPATENTED MINING CLAIMS IN THIS TOWNSHIP RESERVED TO THE CROWN

Surface reservations 400' wide by Dept of L. & C. shown hereon thus

1377

TOWNSHIP 1.D. (SAYER)

SAULT STE MARIE MINING DIVISION

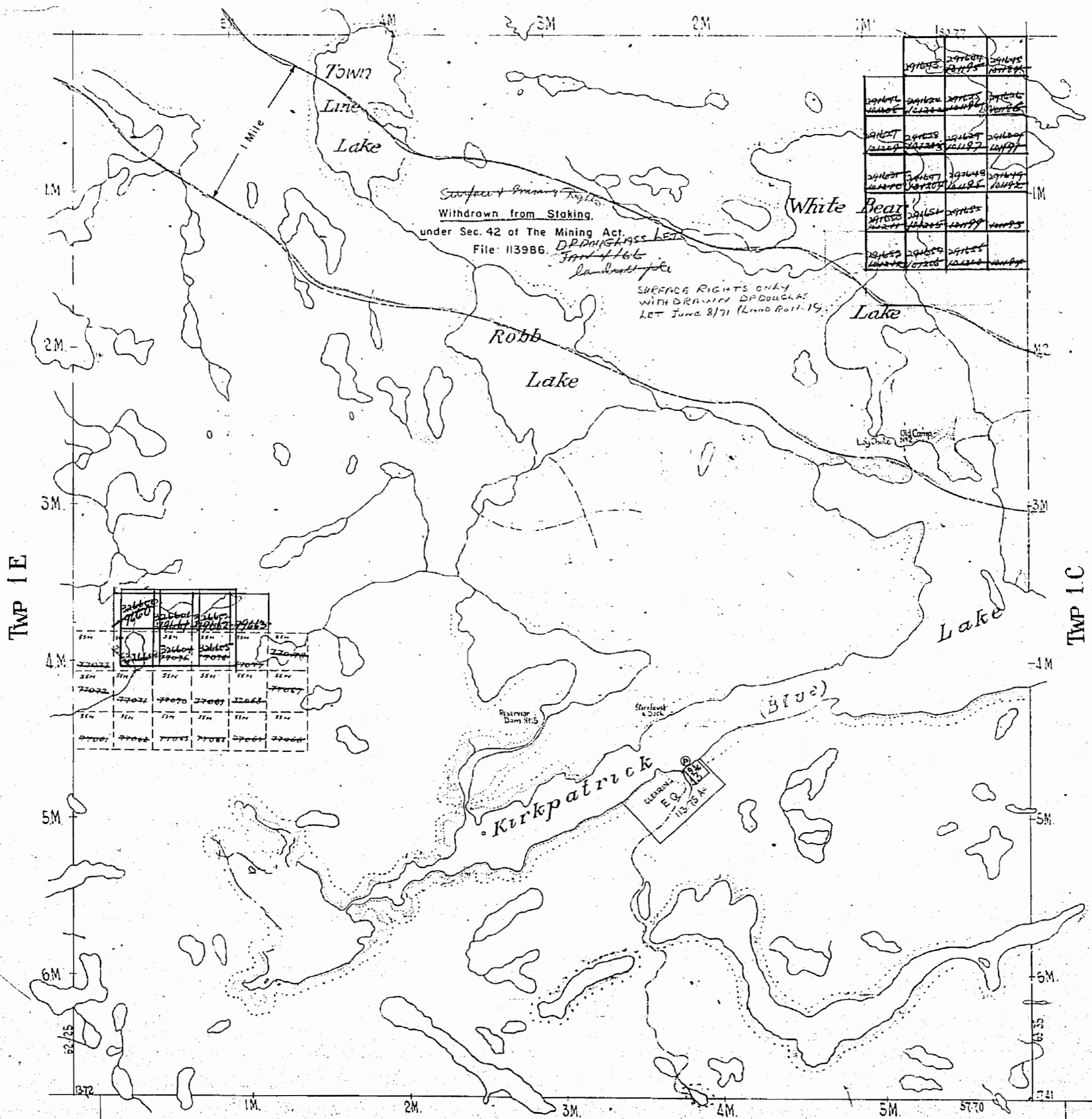
M. 1377

DISTRICT OF ALGOMA

Scale - 40 Chains - 1 Inch.

TWP. 2.D.

North Ast.



TWP 176

SAND AND GRAVEL ON ALL UNPATENTED MINING CLAIMS IN THIS TOWNSHIP RESERVED TO THE CROWN

400' SURFACE RIGHTS RESERVATION AROUND ALL LAKES & RIVERS

1377

TOWNSHIP 1 D

SAULT STE MARIE MINING DIVISION

(SAYER)

DISTRICT OF ALGOMA

Scale - 40 Chans - 1 Inch

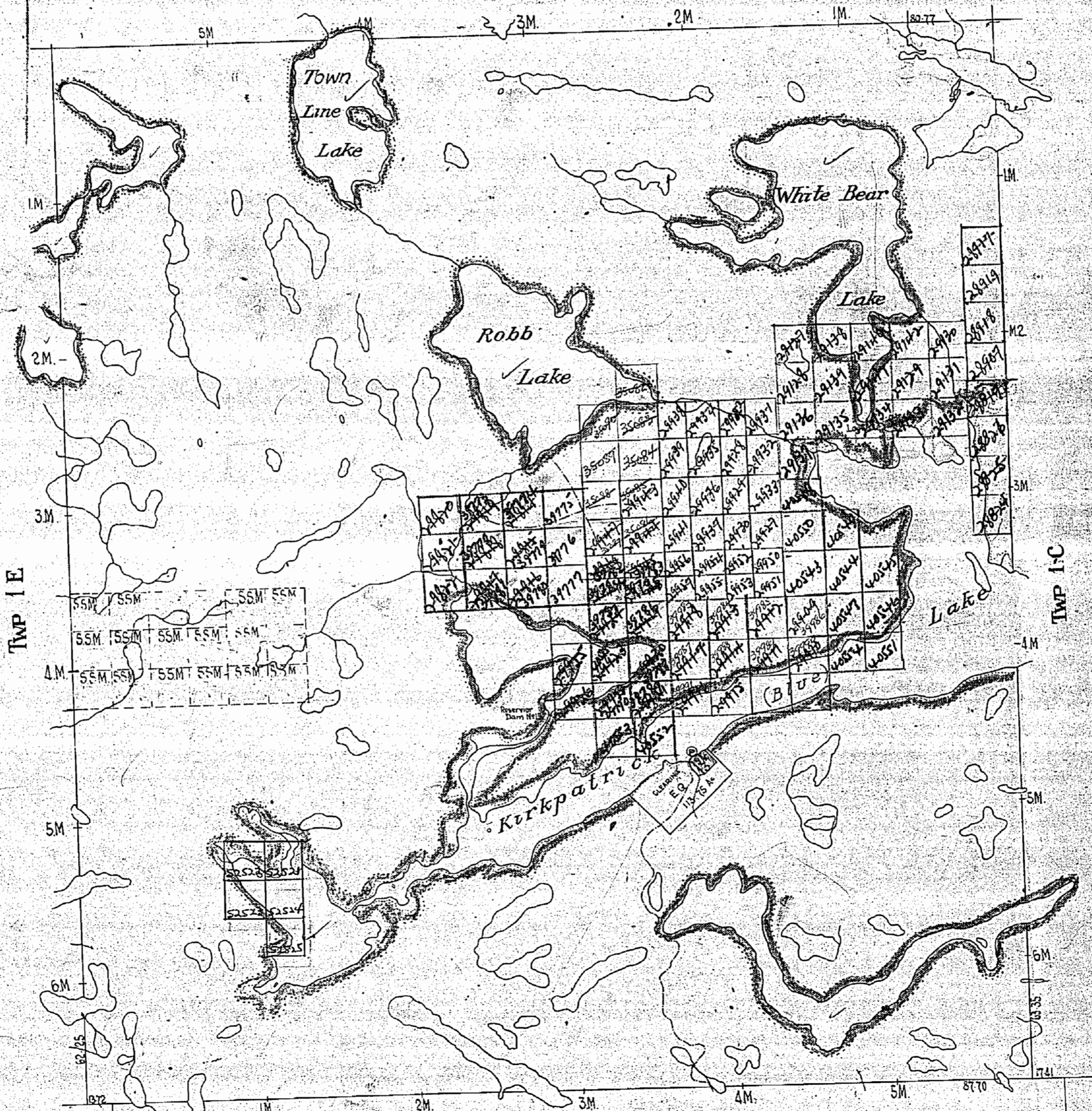
all claims of sand & gravel accepted exclusive of sand & gravel
P.M. letter Aug. 9/5-6

OFFICE MAP

M. 1377

TWP. 2.D

North Ast 6



Surface reservations 200' wide by Dept of L. & F. shown hereon thus ~~-----~~

M. 22

D. I. 9WT

1377

TOWNSHIP 1.D.

TOWNSHIP 1.D.

SAULT STE MARIE MINING DIVISION (SAYER)

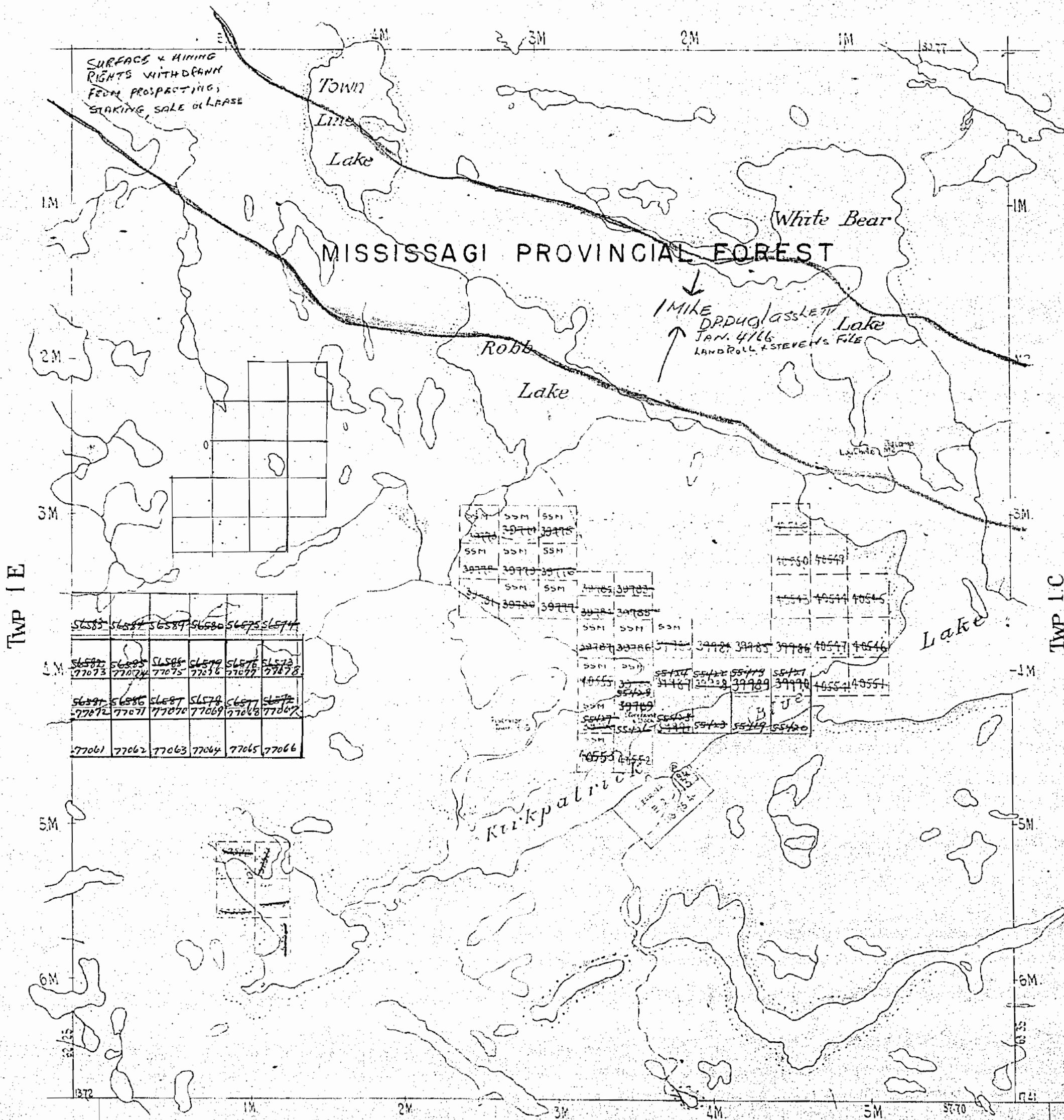
DISTRICT OF ALGOMA

M. 1377

Scale - 40 Chains - 1 Inch.

*All claims accepted
exclusive of Sand & Gravel
J.R. letter Aug 9/86*

TWP. 2.D.



TWP 1.E

TWP 1.C

TWP 176

*Surface reservations 400' wide by Dept of L. & F.
shown hereon thus*

SAND AND GRAVEL ON ALL UNPATENTED MINING CLAIMS IN THIS TOWNSHIP RESERVED TO THE CROWN