

DATE OF ISSUE
OCT 20 1910

M.1093
ONTARIO
MINISTRY OF NATURAL RESOURCES
SURVEYS AND MAPPING BRANCH

SCOLLARD

DISTRICT of SUDBURY

Scale: 40 Chains = 1 inch.

OFFICE USE ONLY

MARTLAND

FALCONER

LATCHFORD



ISLANDS IN FRENCH RIVER, WITHDRAWN FROM STAKING (FILE 61051)
 400' surface rights reservation around all lakes & rivers
 Area marked thus: [diagonal hatching] withdrawn from staking File 122285
 Flooding shown thus: [wavy line] contour 645 H.E.P.C.

parcels PATENTED Surface Rights Only

BLAIR

McDONKEY

SCOLLARD

14 12 10 8 6 4 2 2 4 6 8 10 12 14

SCOLLARD

DISTRICT of NIPISSING

Scale: 40 Chains = 1 inch.

Book

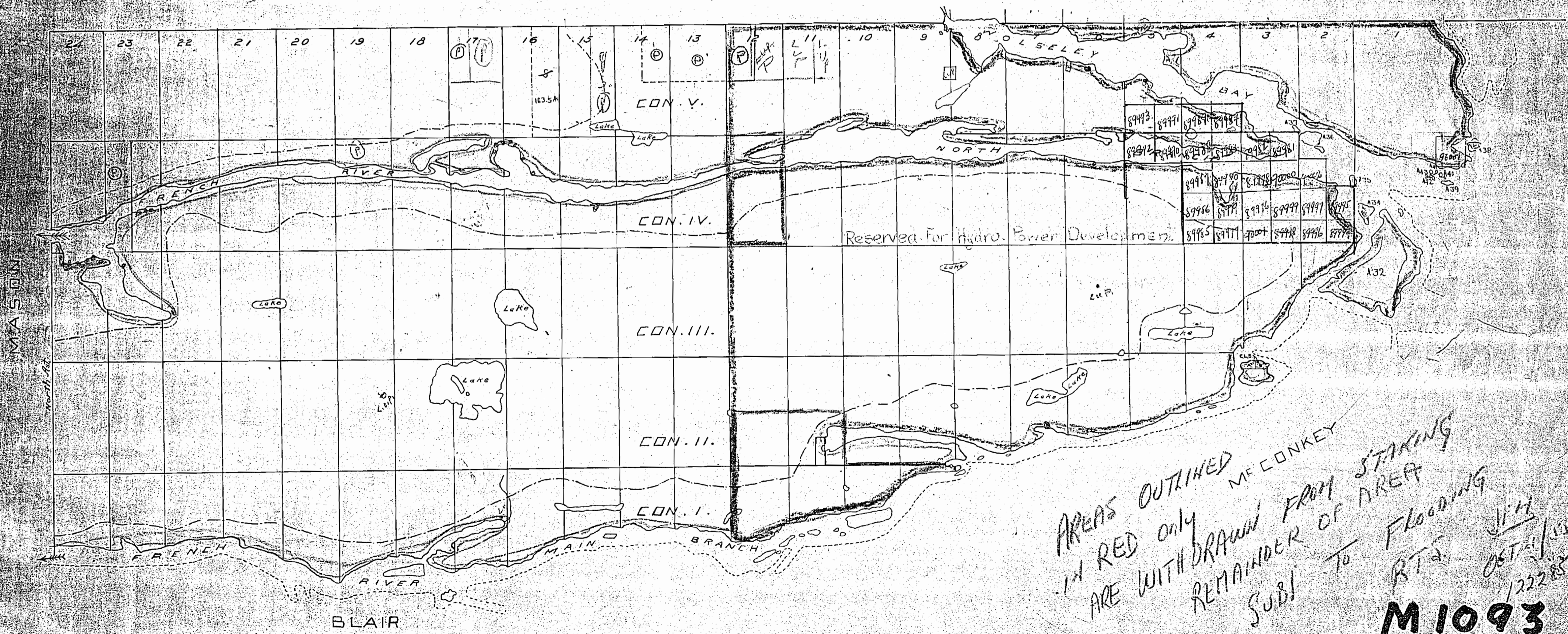
400' Res

200' Res

MARTLAND

FALCONER

LATCHFORD



Reserved for Hydro. Power Development

AREAS OUTLINED
 IN RED only
 ARE WITH DRAWN FROM STAKING
 REMAINDER OF AREA
 SUBJ. TO FLOODING
 ME CONKEY
 BTG
 1222'85
M1093

SCOLLARD

DISTRICT of NIPISSING

Scale: 40 Chains = 1 inch.

Book

Old

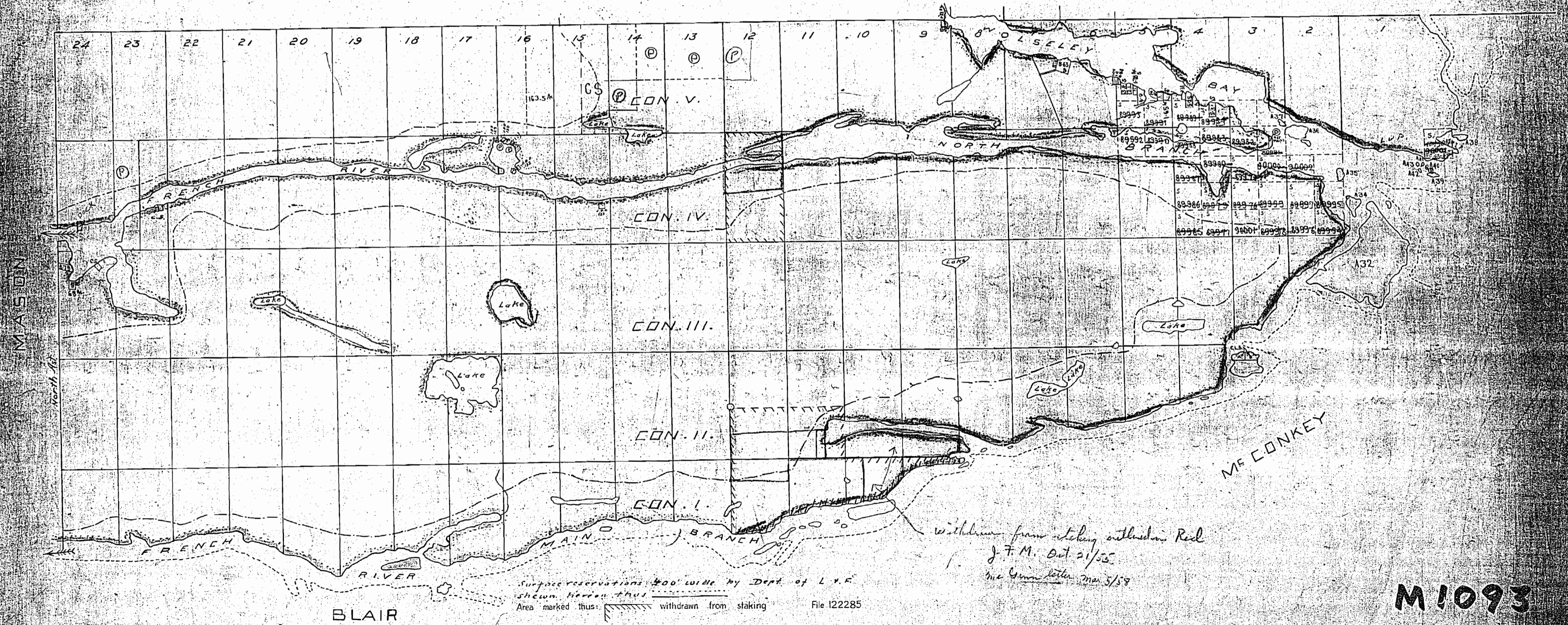
400' res

Islands in French River withdrawn from staking Nov. 23/26 Sect. 31 Sub. (E)

MARTLAND

FALCONER

LATCHFORD



*withdrawn from staking outlosure Res
J. F. M. Oct 21/55
the same letter Mar 5/59*

Surface reservations 400' wide by Dept. of L.V.E.
shown hereon thus [hatched pattern] withdrawn from staking
File 122285

M1093

SCOLLARD

DISTRICT of SUDBURY

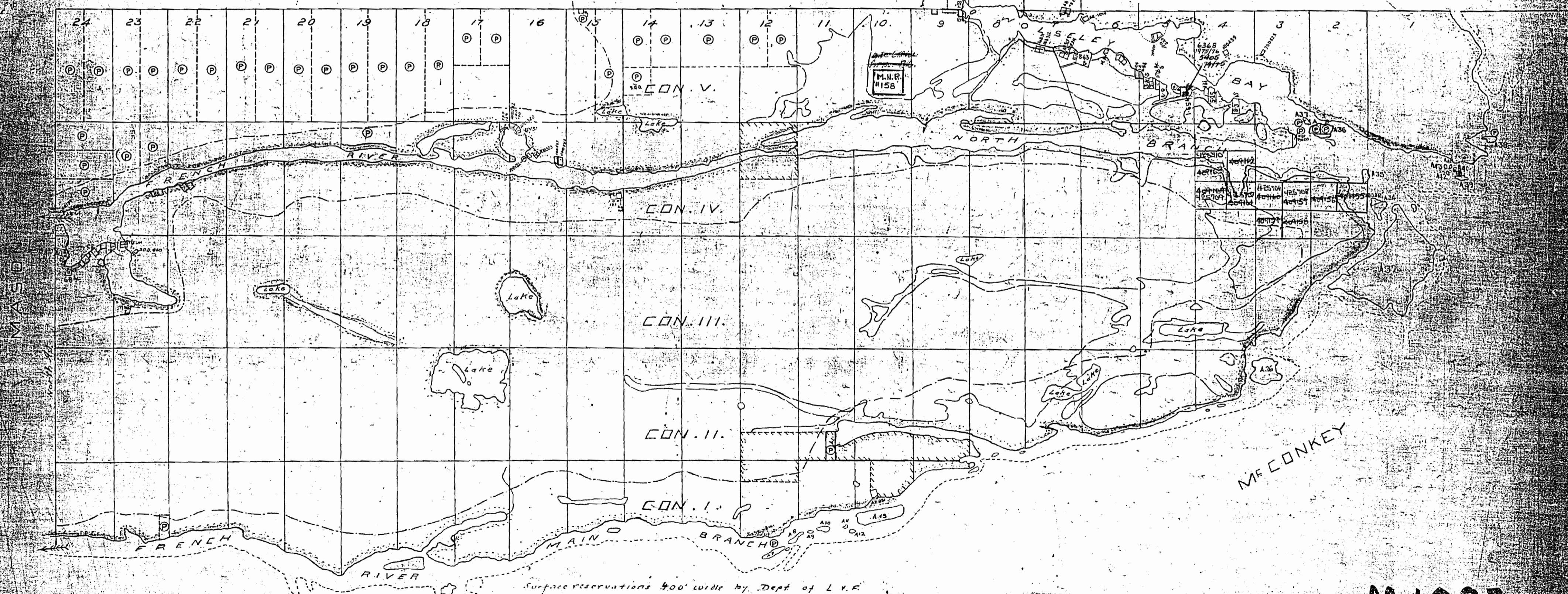
Scale: 40 Chains = 1 inch.

*Islands in French River
withdrawn from staking, Nov 27/56
Act 37 Act (C)*

MARTLAND

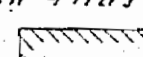

FALCONER

LATCHFORD



BLAIR

Mc CONKEY

Surface reservations 400' wide by Dept of L.V.E.
 shown hereon thus  withdrawn from staking File 122285
 Flooding shown thus:  contour 645 H.E.P.C.

M1093
SCOLLARD

SCOLLARD

DISTRICT OF SUDBURY

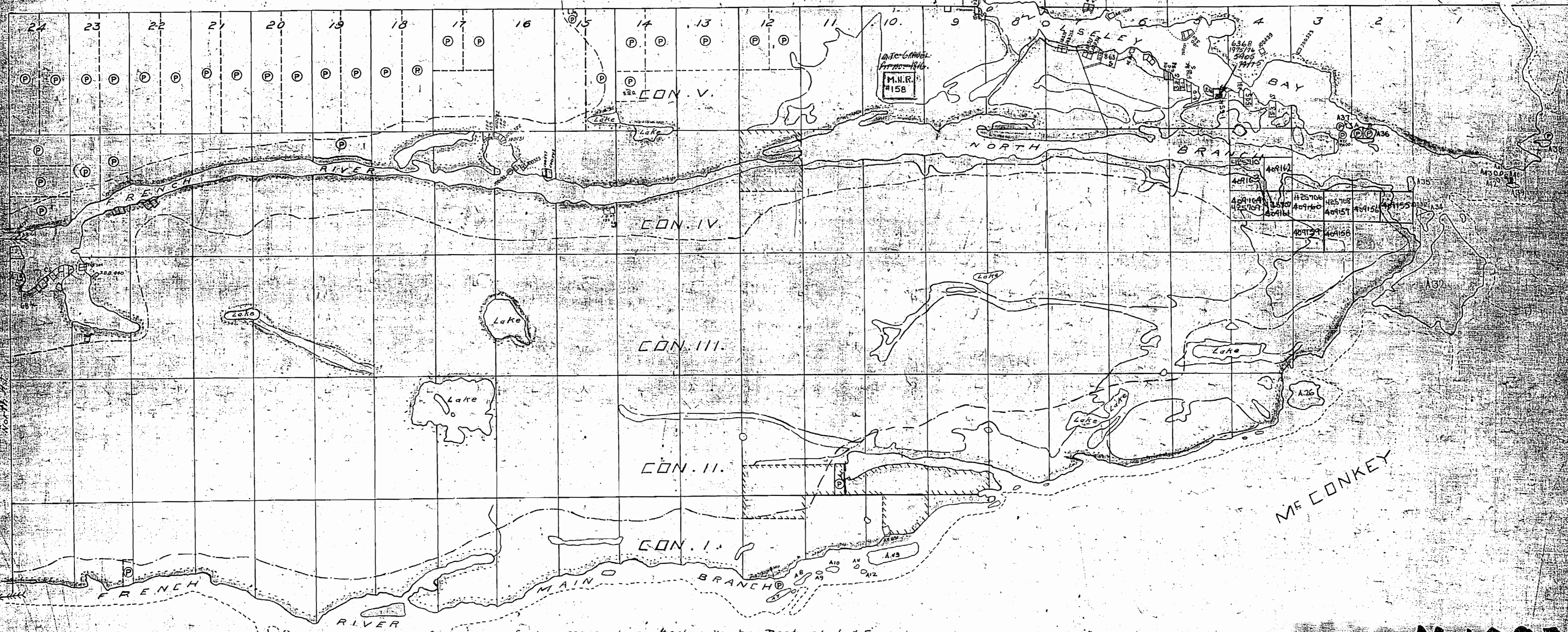
Scale: 40 Chains = 1 inch.

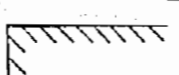

*Delimited in French River
with lines from staking, Nov 1/16
sheet 34 4-16-16*

MARTLAND

FALCONER

LATCHFORD



Surface reservations 400' wide by Dept of L & E
shown hereon thus  withdrawn from staking File 122285
Flooding shown thus:  contour 545 H.E.P.C.

M 1093

SCOLLARD

14 12 10 8 6 4 2 2 4 6 8 10 12 14

Aug 22/87

M1093
ONTARIO

MINISTRY OF NATURAL RESOURCES
SURVEYS AND MAPPING BRANCH

SCOLLARD

DISTRICT OF SUDBURY

Scale: 40 Chains = 1 inch.

(R1) FRENCH RIVER PROVINCIAL PARK ONTARIO REGULATION
NO.210/89 APRIL 25, 1989 SCHEDULE NO.216

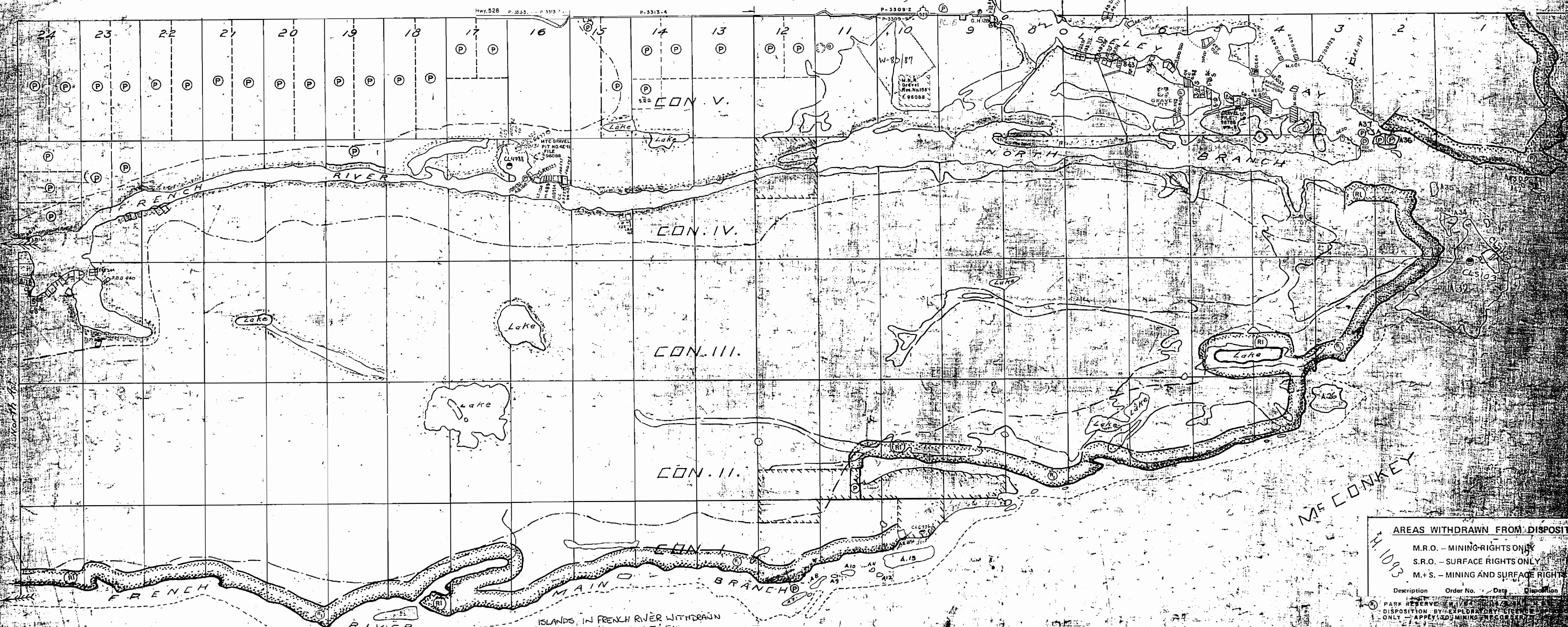
THE INFORMATION THAT APPEARS ON THIS MAP HAS BEEN COMPILED FROM VARIOUS SOURCES, AND ACCURACY IS NOT GUARANTEED. THOSE WISHING TO STAKE MINING CLAIMS SHOULD CONSULT WITH THE MINING RECORDER, MINISTRY OF NORTHERN DEVELOPMENT AND MINES, FOR ADDITIONAL INFORMATION ON THE STATUS OF THE LANDS SHOWN HEREON.

MARTLAND

* ORDER NO. W-80/87 NER - SECTION 36, RSO, 1990
SURFACE + MINING RIGHTS WITHDRAWN FROM STAKING
(SEE SCOLLARD LAND ROLL)

FALCONER

LATCH



AREAS WITHDRAWN FROM DISPOSITION			
M.R.O.	- MINING RIGHTS ONLY		
S.R.O.	- SURFACE RIGHTS ONLY		
M.+S.	- MINING AND SURFACE RIGHTS		
Description	Order No.	Date	Disposition

ISLANDS IN FRENCH RIVER WITHDRAWN FROM STAKING FILE 67051
400 surface rights reservation around all lakes & rivers.

Area marked thus: withdrawn from staking

Flooding shown thus: contour 645 H.E.P.C.

parcels PATENTED Surface Rights Only
Islands in French River withdrawn from staking, File: 67051

QUARRY PERMIT

SCOLLARD

SCOLLARD

DISTRICT OF NIPISSING

Scale: 40 Chains = 1 inch.

Book

Old

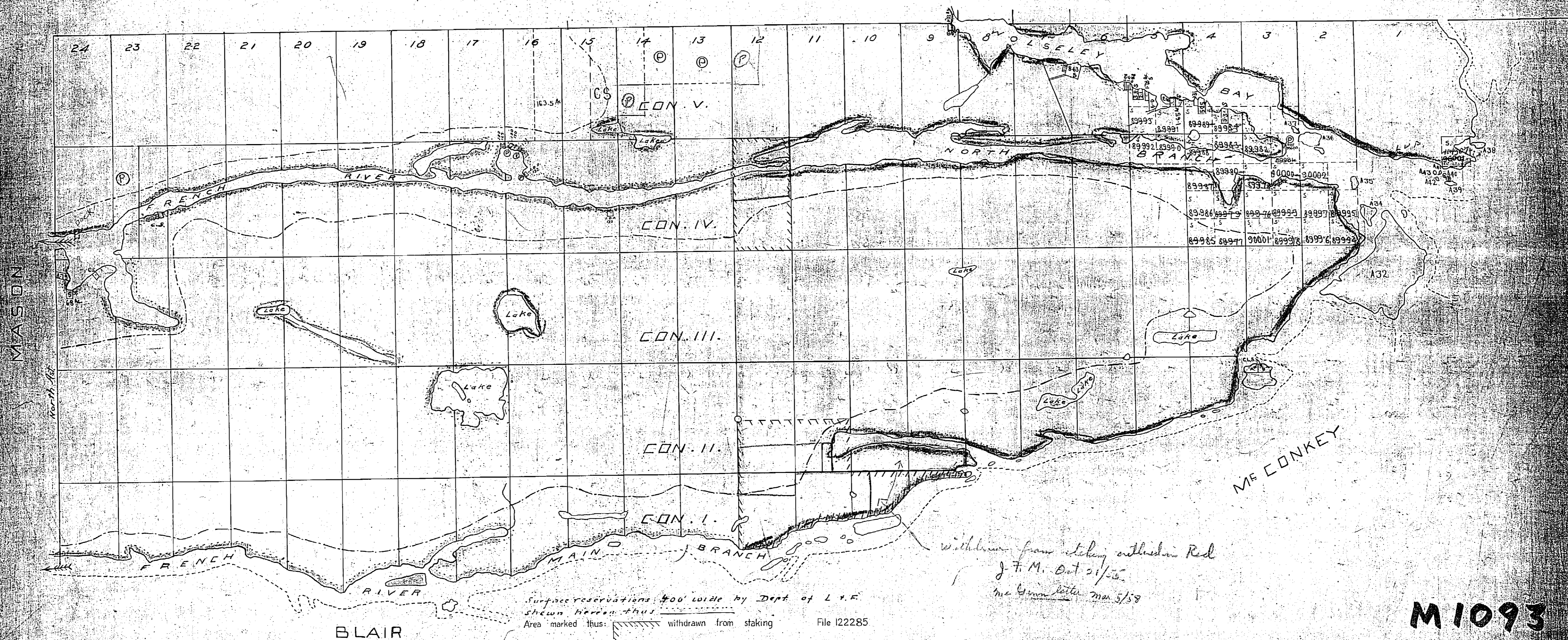
400' res

Islands in French River withdrawn from staking Nov. 23/26 Sect. 31 Sub. (C)

MARTLAND

FALCONER

LATCHFORD



*Withdrawn from staking on 12/26
J. F. M. Oct 21/26
McGinn letter Mar 5/28*

Surface reservations 400' wide by Dept. of L.V.E.
shown hereon thus
Area marked thus: [hatched symbol] withdrawn from staking File 122285

M1093

SCOLLARD

DISTRICT of NIPISSING

Scale: 40 Chains = 1 inch.

Book

400' Res

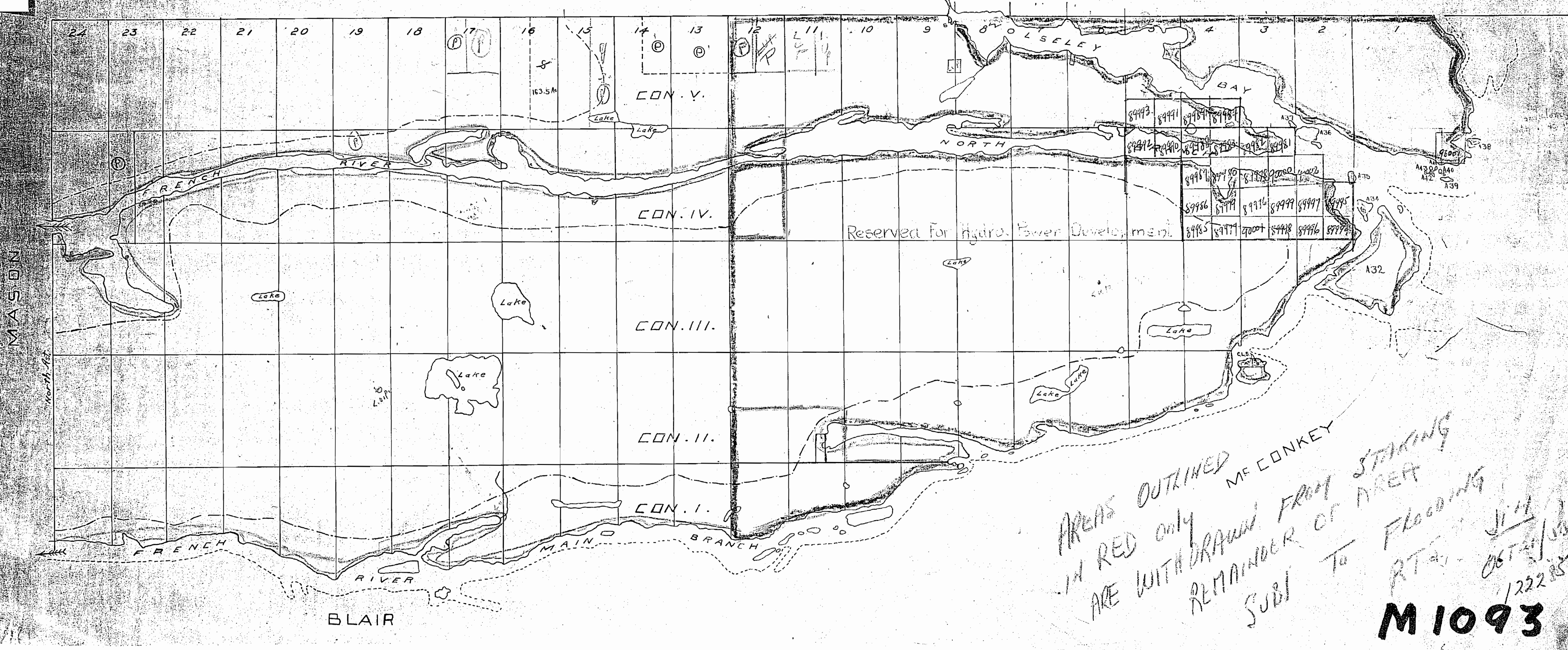
200' Res

MARTLAND

FALCONER

LATCHFORD

1093



AREAS OUTLINED
IN RED only
ARE WITH DRAWING FROM STARTING
REMAINDER OF AREA
SUBJ TO FLOODING
M. CONKEY
RTA
JIM
COSTA
1/22/28

M 1093



SCOLLARD

DISTRICT OF NIPISSING

Scale: 40 Chains = 1 inch.

Bank

Old

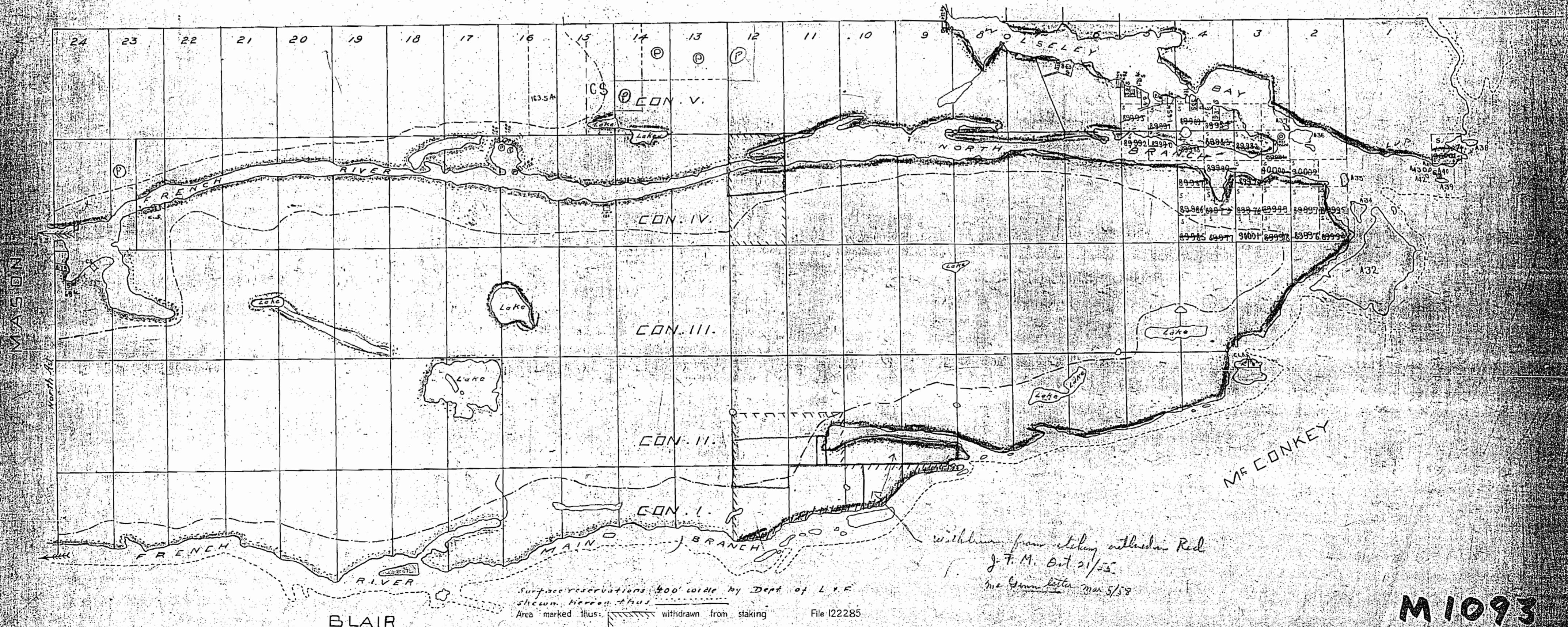
400' res

Islands in French River withdrawn from staking Nov. 23/26 Sect. 37 Sub. (C)

MARTLAND

FALCONER

LATCHFORD



BLAIR

Surface reservations 400' wide by Dept of L & E shown hereon thus: Area marked thus: withdrawn from staking File 122285

within from staking withdrawn Red J. F. M. Oct 21/25 Mc Conn letter Mar 5/28

M1093

SCOLLARD

DISTRICT OF SUDBURY

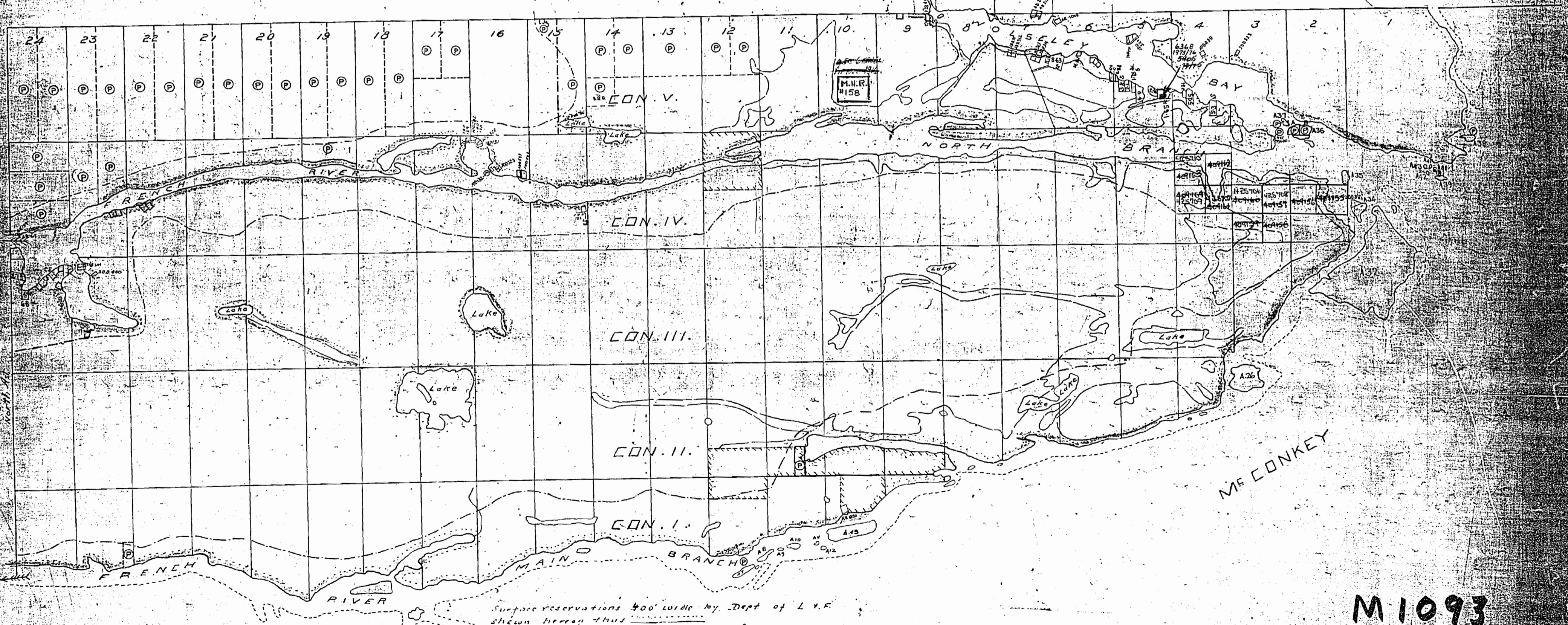
Scale: 40 Chains = 1 inch.

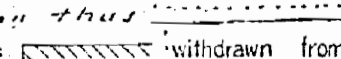


*Adjusted on French River
withdrawing from staking, Nov 27/26
Sheet 39 of 60*

MARTLAND

FALCONER

LATCHFORD



Surface reservations 400' wide by Dept of L.F.
 shown hereon thus 
 Area marked thus:  withdrawn from staking File 122285
 Flooding shown thus:  contour 645 H.E.R.C.

M1093
SCOLLARD

1093

SCOLLARD

DISTRICT OF NIPISSING

Scale: 40 Chains = 1 inch.

Book

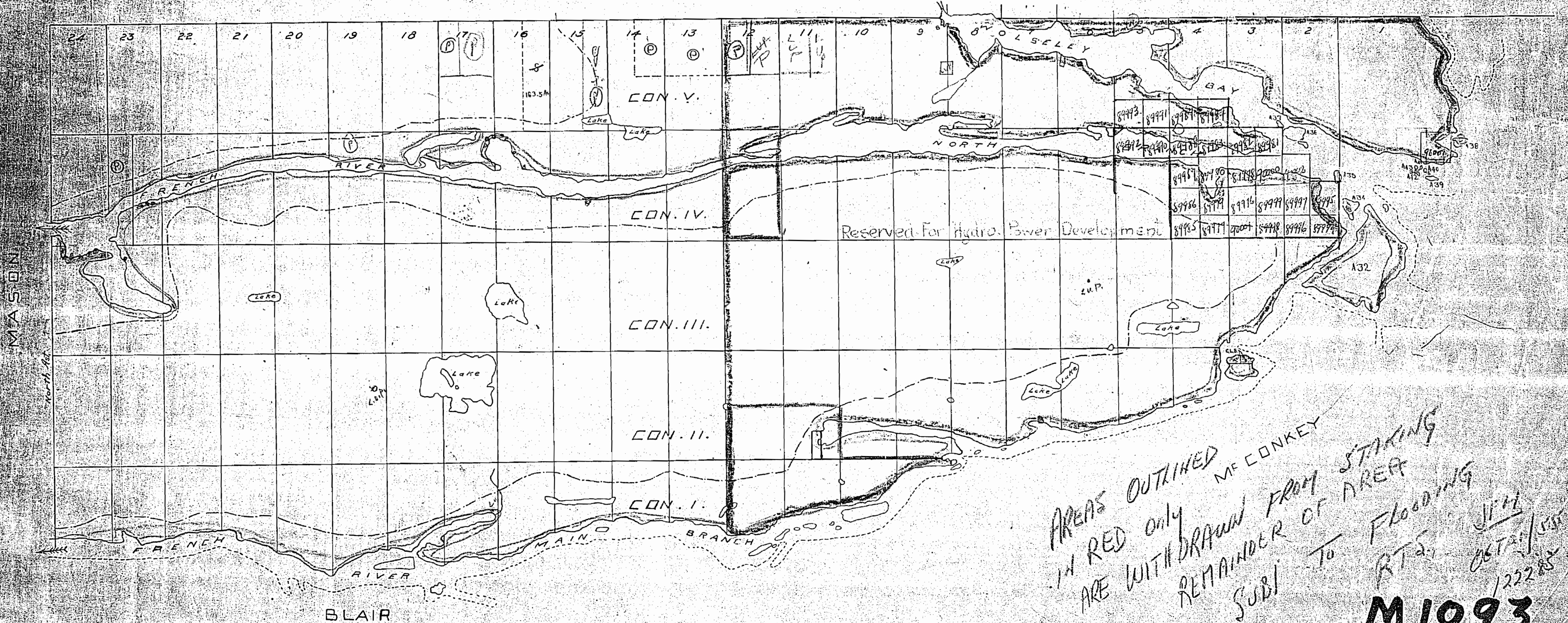
400' Res

200' Res

MARTLAND

FALCONER

LATEHFORD



AREAS OUTLINED
 IN RED ONLY
 ARE WITHDRAWN FROM STAKING
 REMAINDER OF AREA
 SUBJ. TO FLOODING
 MFC CONKEY
 JFM
 OCT 11/58
 122283

M1093

DATE OF ISSUE
OCT 20 1915

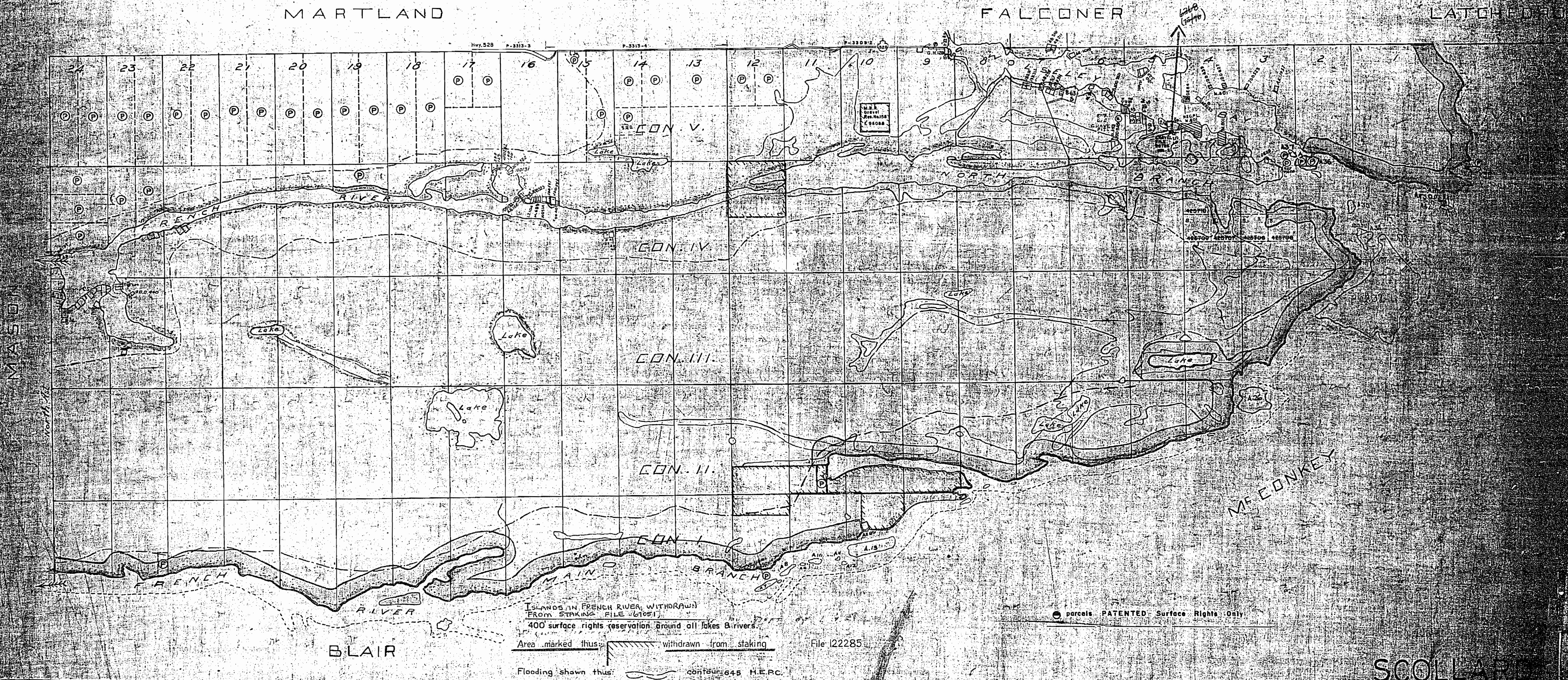
SCOLLARD

DISTRICT of SUDBURY

Scale: 40 Chains = 1 inch.

OFFICE USE ONLY

M1093
ONTARIO
MINISTRY OF NATURAL RESOURCES
SURVEYS AND MAPPING BRANCH



Islands in French River withdrawn
from staking file 61051
400 surface rights reservation around all lakes & rivers
Area marked thus: [hatched symbol] withdrawn from staking File 122285
Flooding shown thus: [wavy line symbol] contour 645 H.E.P.C.

● parcels PATENTED Surface Rights Only

SCOLLARD