

# SHETLAND TWP.

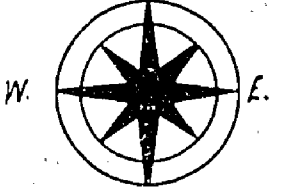
PORCUPINE MINING DIVISION  
DISTRICT OF ALGOMA.

ONTARIO  
MINISTRY OF NATURAL RESOURCES  
SURVEYS AND MAPPING BRANCH

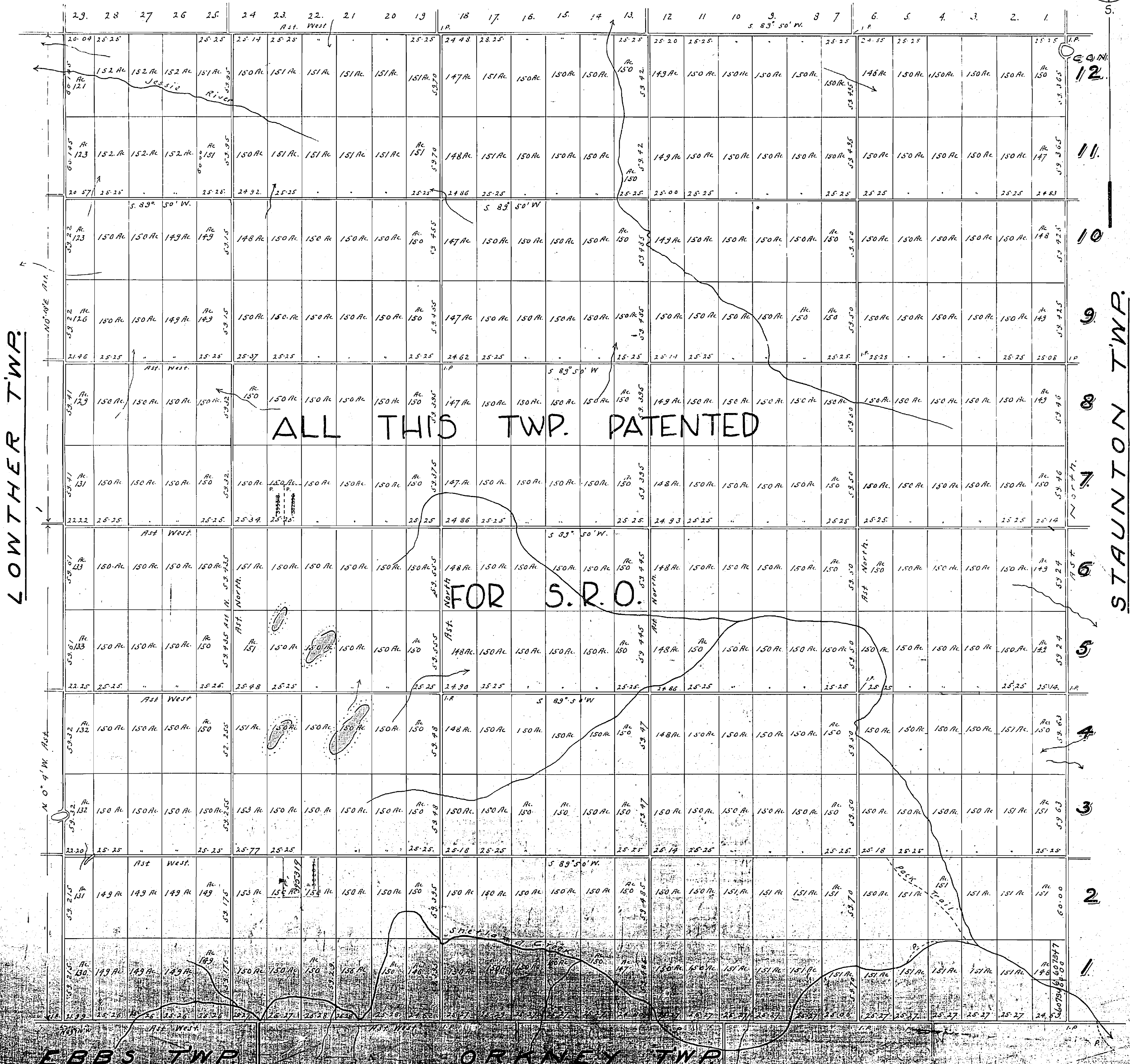
DATE OF ISSUE  
OCT 22 1974

691

Scale, 40 chains to an inch.



## KENDALL TWP.



REFERENCES

AREAS WITHDRAWN FROM DISPOSITION

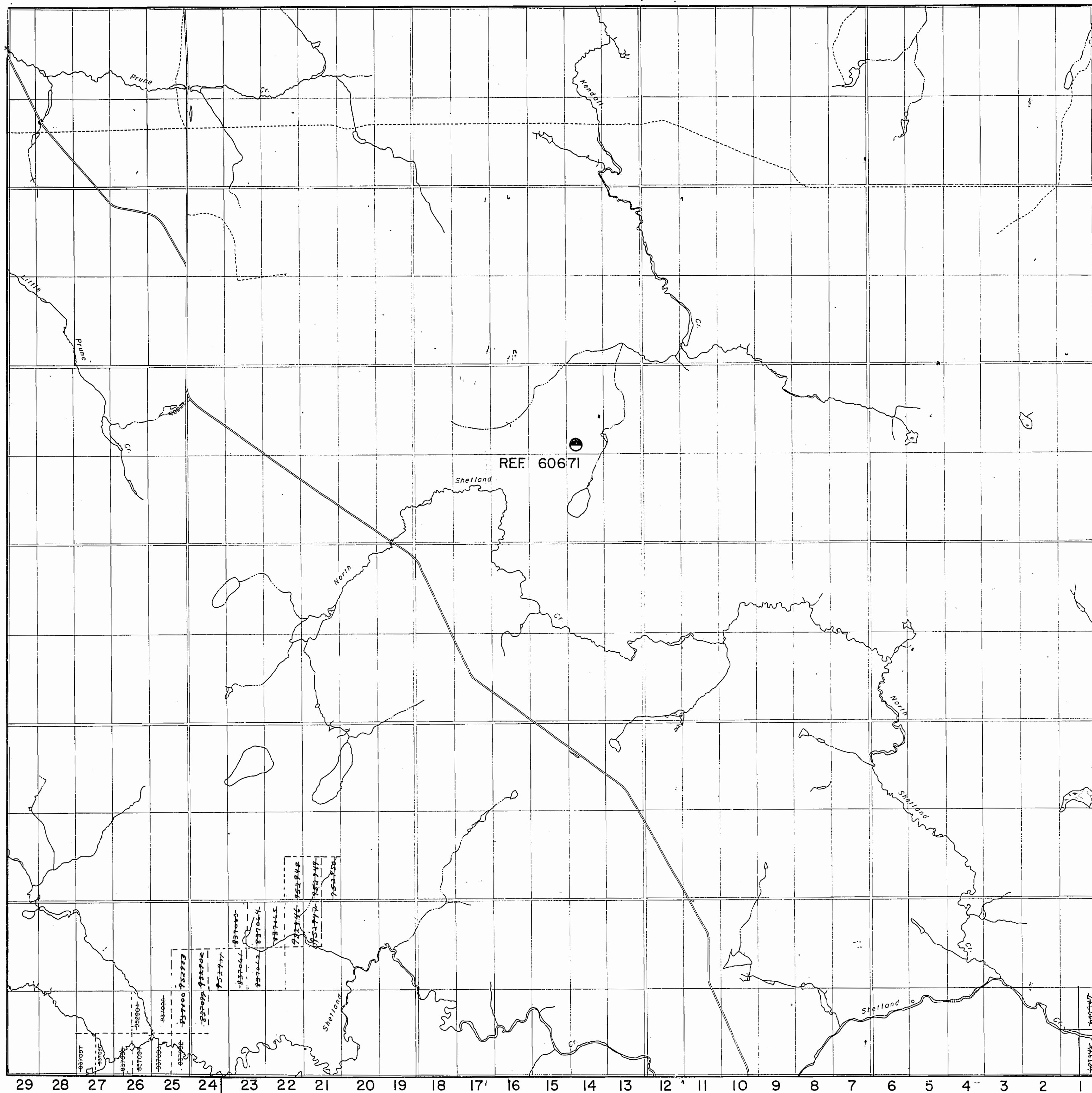
M.R.O. - MINING RIGHTS ONLY  
 S.R.O. - SURFACE RIGHTS ONLY  
 M.+S. - MINING AND SURFACE RIGHTS

Description	Order No.	Date	Disposition	File

KENDALL TWP G-2890

LOWTHER TWP G-2329

STAUNTON TWP G-2353



EBBS TWP G-2305

ORKNEY TWP G-2342

LEGEND

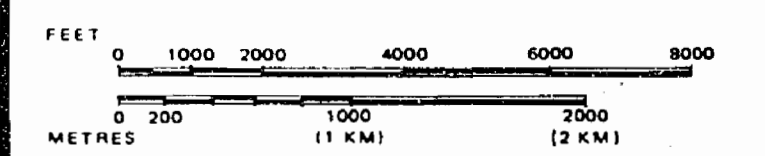
- HIGHWAY AND ROUTE NO.
- OTHER ROADS
- TRAILS
- SURVEYED LINES:
  - TOWNSHIPS, BASE LINES, ETC.
  - LOTS, MINING CLAIMS, PARCELS, ETC.
- UNSURVEYED CLAIMS:
  - LOT LINES
  - PARCEL BOUNDARY
  - MINING CLAIMS, ETC.
- RAILWAY AND RIGHT OF WAY
- UTILITY LINES
- NON-PERENNIAL STREAM
- FLOODING OR FLOODING RIGHTS
- SUBDIVISION OR COMPOSITE PLAN RESERVATIONS
- ORIGINAL SHORELINE
- MARSH OR MUSKEG
- MINES
- TRAVERSE MONUMENT

DISPOSITION OF CROWN LANDS

TYPE OF DOCUMENT	SYMBOL
PATENT, SURFACE & MINING RIGHTS	●
" SURFACE RIGHTS ONLY	○
" MINING RIGHTS ONLY	◐
LEASE, SURFACE & MINING RIGHTS	■
" SURFACE RIGHTS ONLY	◼
" MINING RIGHTS ONLY	◑
LICENCE OF OCCUPATION	◔
ORDER-IN-COUNCIL	OC
RESERVATION	⊙
CANCELLED	⊖
SAND & GRAVEL	⊕

NOTE: MINING RIGHTS IN PARCELS PATENTED PRIOR TO MAY 6, 1913, VESTED IN ORIGINAL PATENTEE BY THE PUBLIC LANDS ACT, R.S.O. 1970, CHAP. 360, SEC. 63, SUBSEC. 1.

SCALE: 1 INCH = 40 CHAINS



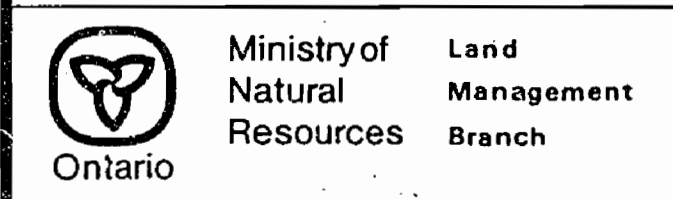
DATE OF ISSUE

MAY 25 1998

PROVINCIAL RECORDING OFFICE - SUDBURY

THE INFORMATION THAT APPEARS ON THIS MAP HAS BEEN COMPILED FROM VARIOUS SOURCES, AND ACCURACY IS NOT GUARANTEED. THOSE WISHING TO STAKE MINING CLAIMS SHOULD CONSULT WITH THE MINING RECORDER, MINISTRY OF NORTHERN DEVELOPMENT AND MINES, FOR ADDITIONAL INFORMATION ON THE STATUS OF THE LANDS SHOWN HEREON.

TOWNSHIP  
**SHETLAND**  
 M.N.R. ADMINISTRATIVE DISTRICT  
**HEARST**  
 MINING DIVISION  
**PORCUPINE**  
 LAND TITLES / REGISTRY DIVISION  
**COCHRANE**



Date: MARCH, 1984  
 Number: **G-2351**  
 Revised: May 31/84

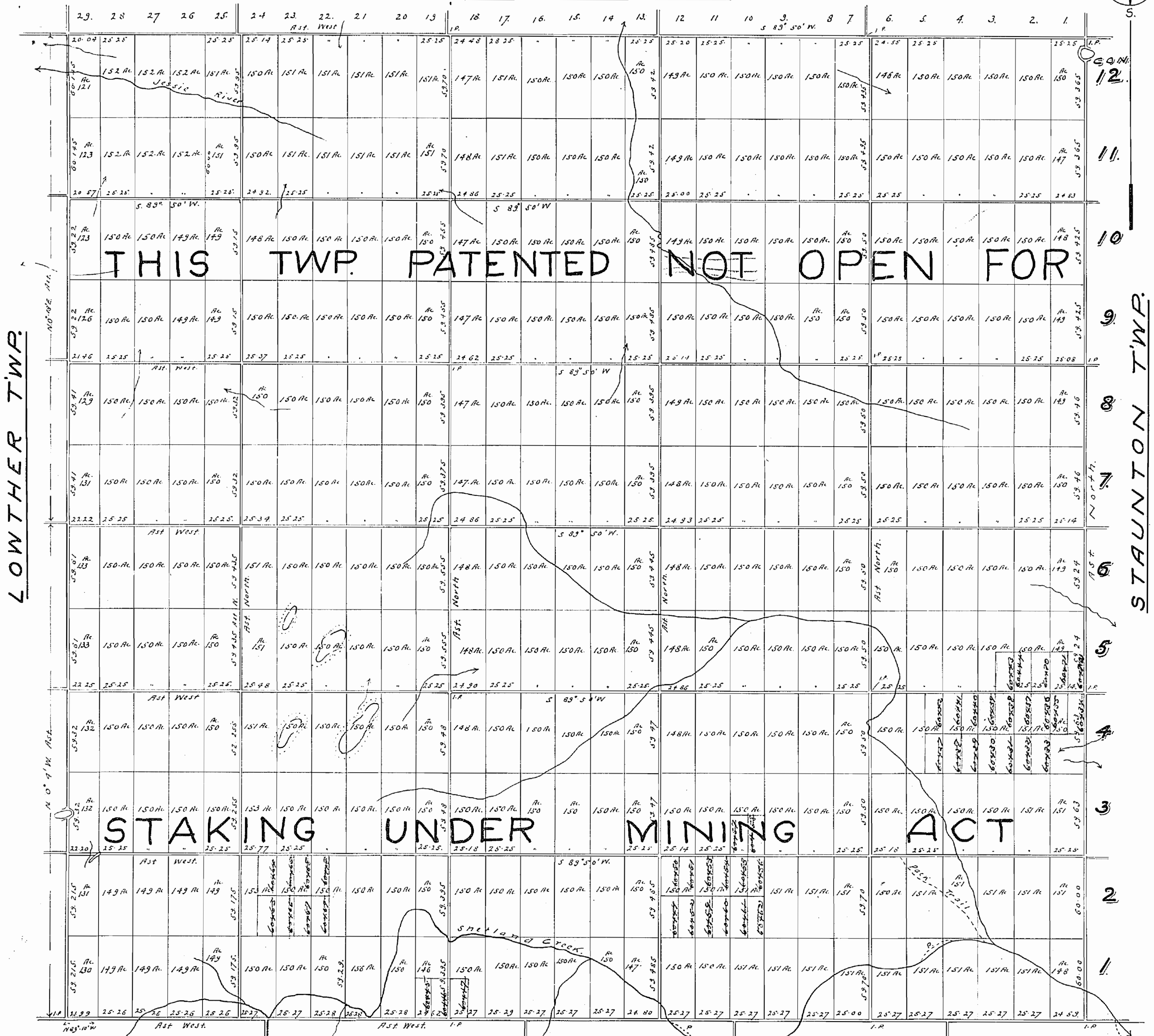
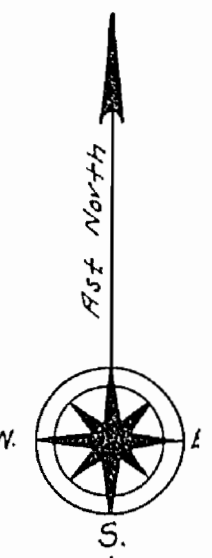
1343

# PLAN OF SHETLAND TWP. M. 1343

## SAULT STE. MARIE MINING DIVISION DISTRICT OF ALGOMA.

Scale, 40 chains to an inch.

### KENDALL TWP.



**THIS TWP. PATENTED NOT OPEN FOR**

**STAKING UNDER MINING ACT**

EBBS TWP.

ORKNEY TWP.

Surface reservations 400' wide by Dept. of L. & E. shown hereon thus

1343

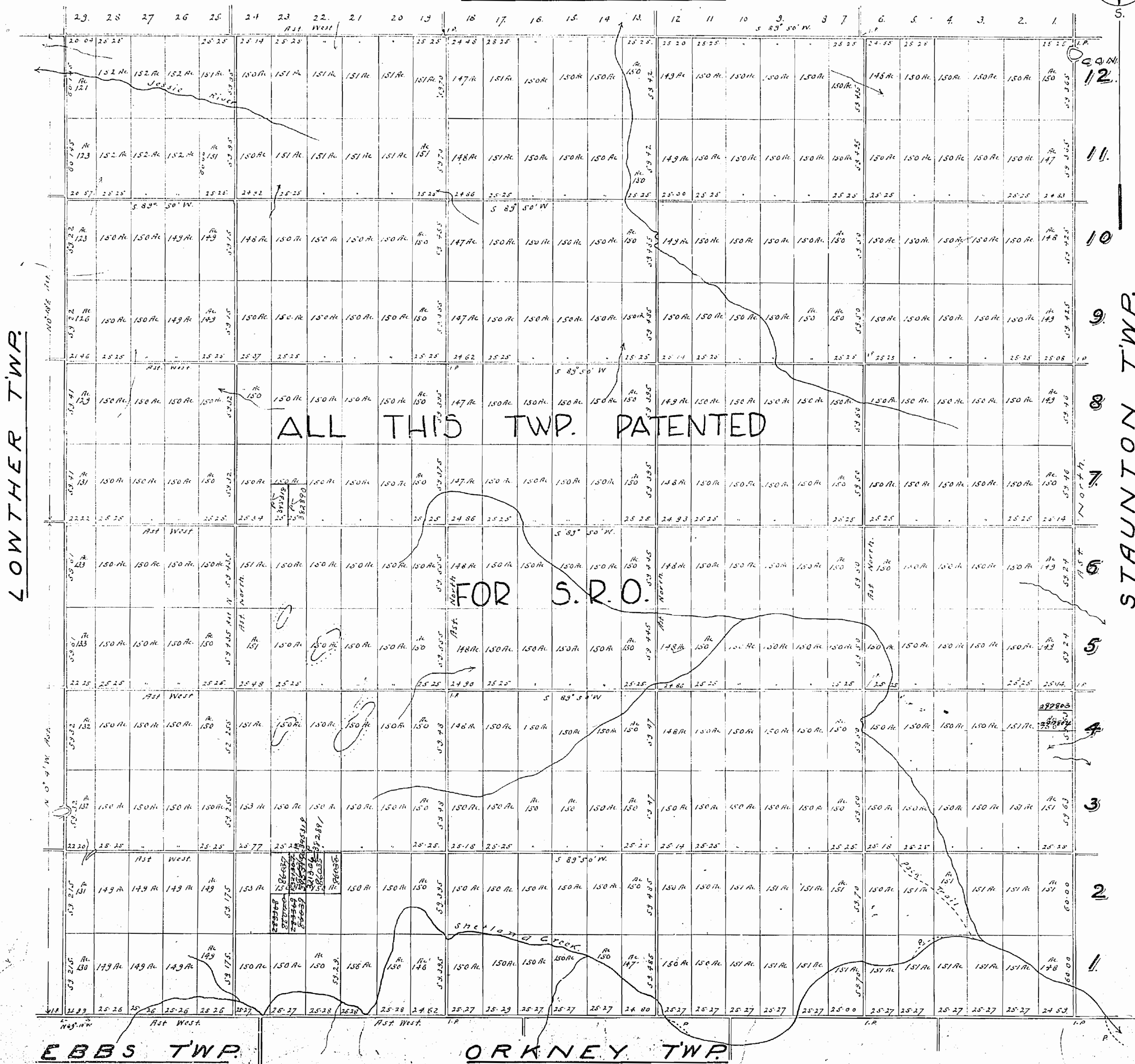
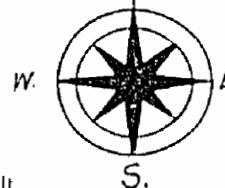
# PLAN OF SHETLAND TWP. M-1343

## SAULT STE. MARIE MINING DIVISION. DISTRICT OF ALGOMA.

M.R.O. given June 1/59  
as amended May 7/59

Scale, 40 chains to an inch.

### KENDALL TWP.



ALL THIS TWP. PATENTED  
FOR S.R.O.

LOWTHER TWP.

STAUNTON TWP.

EBBES TWP.

ORKNEY TWP.

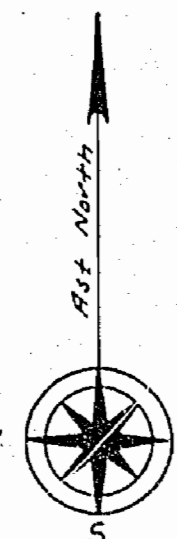
400' surface rights reservation around all lakes & rivers.

# PLAN OF SHETLAND TWP. M. 1343

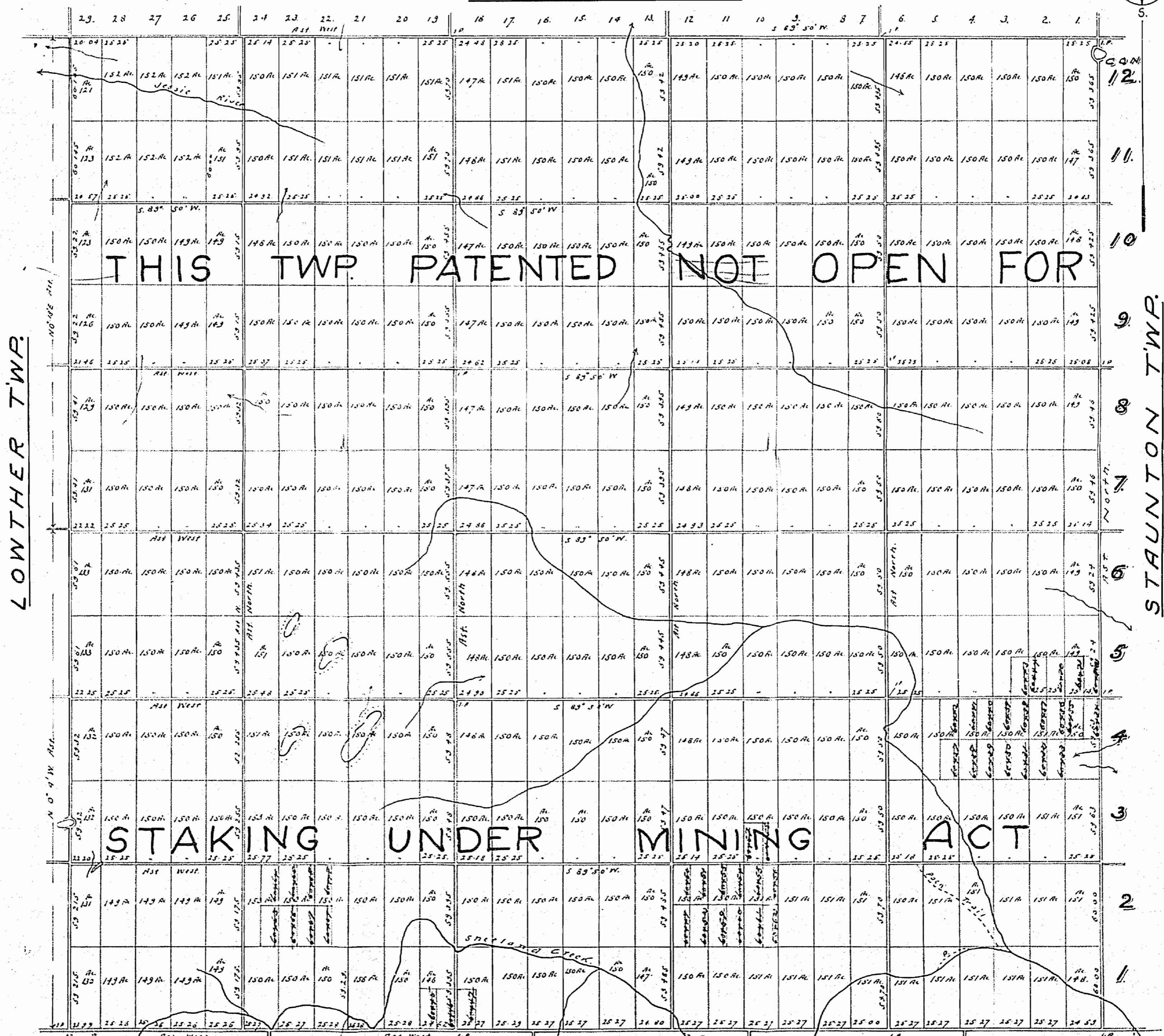
## SAULT STE. MARIE MINING DIVISION. DISTRICT OF ALGOMA.

—Scale, 40 chains to an inch.—

### KENDALL TWP.



*M.R. O. June 1/59  
G.P.S. 1/59*



**THIS TWP. PATENTED NOT OPEN FOR**

**STAKING UNDER MINING ACT**

EBBS TWP.

ORKNEY TWP.

Surface reservations 400' wide by Dept of L. & C. shown hereon thus

1343

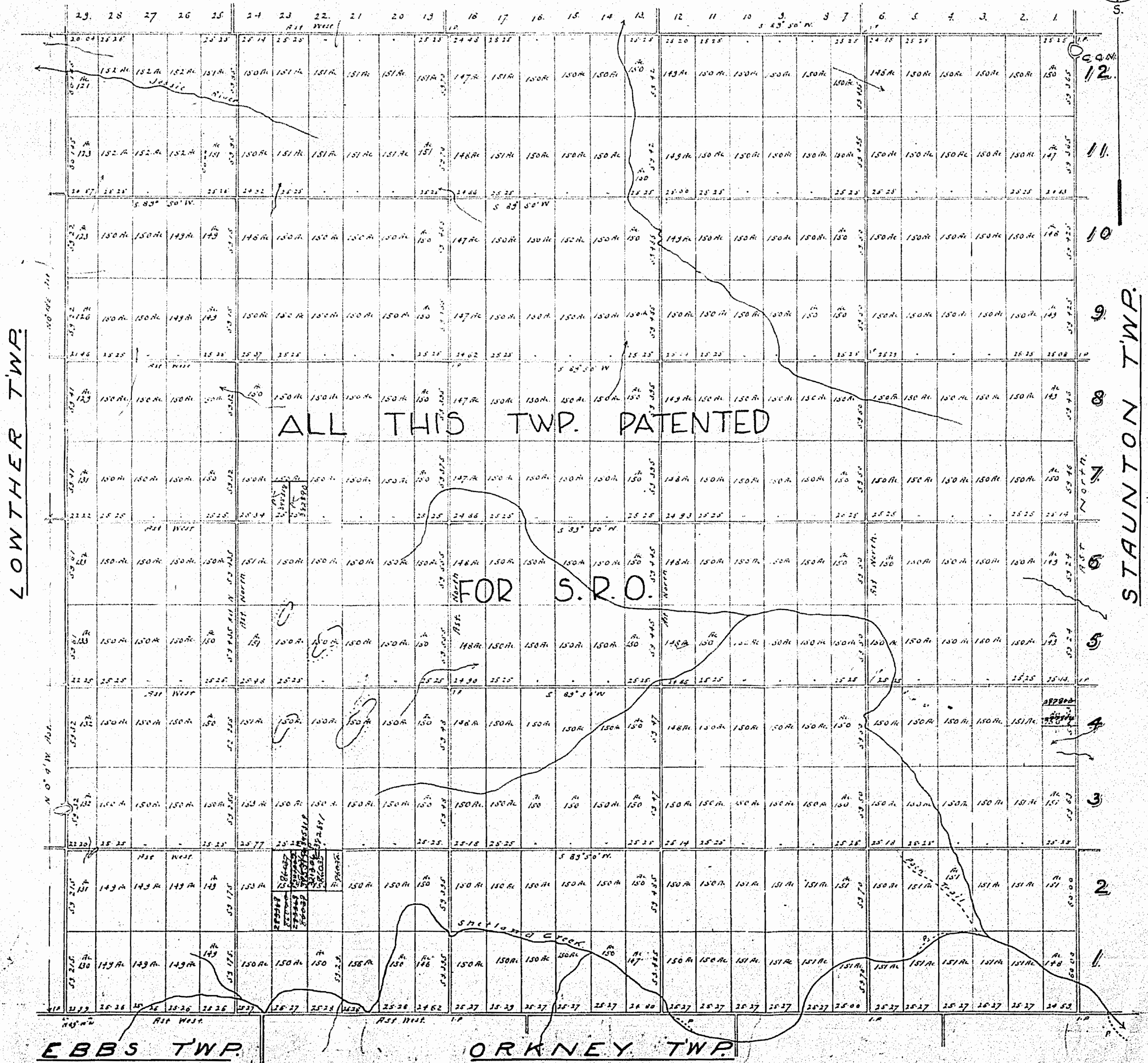
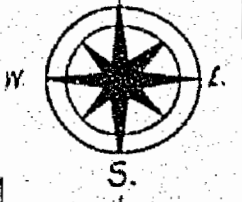
# PLAN OF SHETLAND TWP. M-1343

## SAULT STE. MARIE MINING DIVISION DISTRICT OF ALGOMA.

M.R.O. open June 1/59  
and Amended Aug 9/59

Scale, 40 chains to an inch.

### KENDALL TWP.



ALL THIS TWP. PATENTED  
FOR S.R.O.

EBBS TWP.

ORKNEY TWP.

400' surface rights reservation around all lakes & rivers.

SHETLAND TWP. M-1343

1343

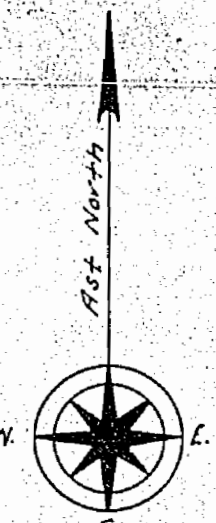
# PLAN OF SHETLAND TWP. M-1343

## SAULT STE. MARIE MINING DIVISION DISTRICT OF ALGOMA.

M.R.O. open June 1/59  
and May 9/59

Scale, 40 chains to an inch.

### KENDALL TWP.



ALL THIS TWP. PATENTED

FOR S.R.O.

400' surface rights reservation around all lakes & rivers.

LOWTHER TWP.

STAUNTON TWP.

EBBES TWP.

ORKNEY TWP.

SHETLAND TWP. M-1343

1343

# PLAN OF SHETLAND TWP. M. 1343

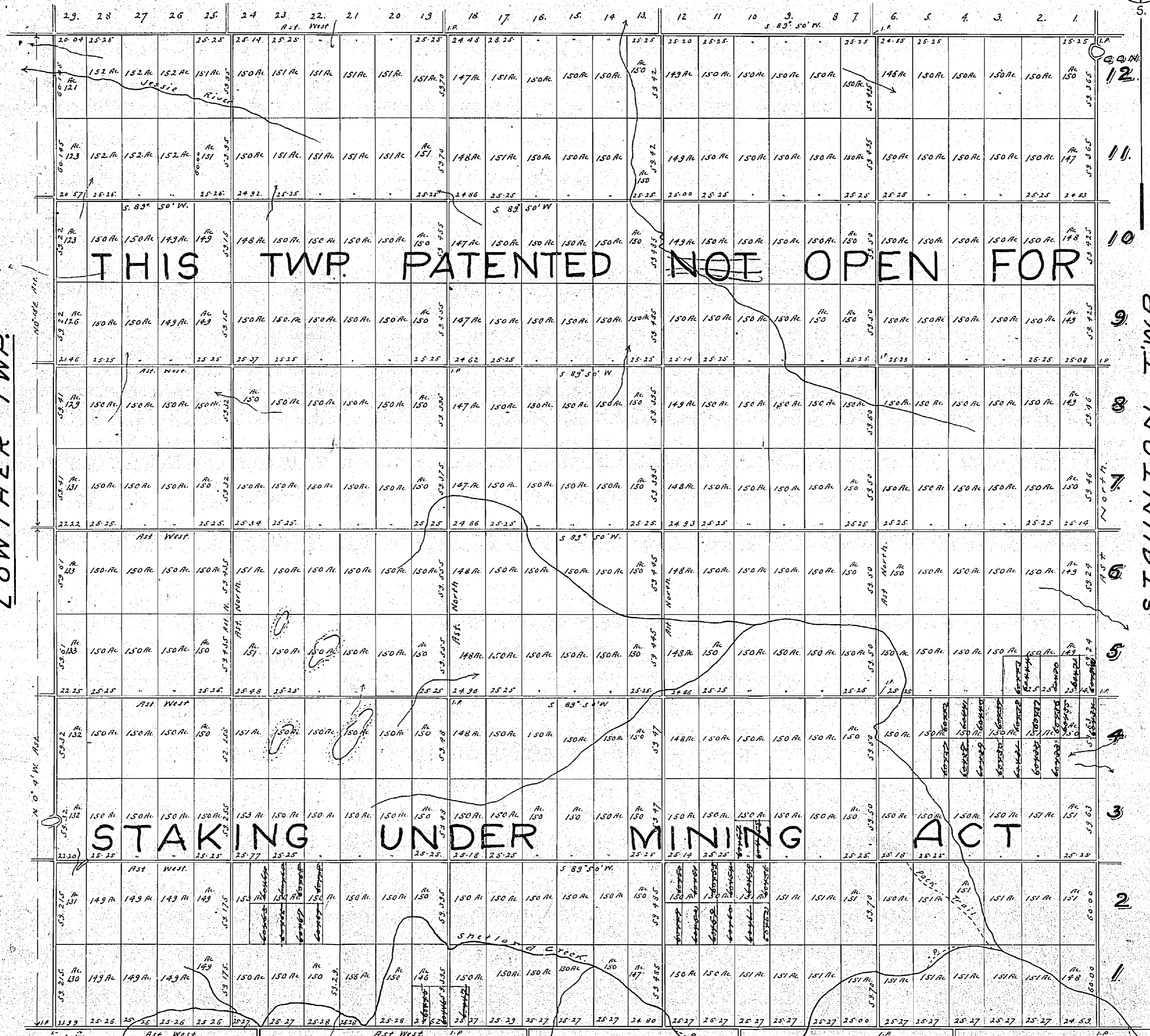
## SAULT STE. MARIE MINING DIVISION DISTRICT OF ALGOMA.

Scale, 40 chains to an inch.

### KENDALL TWP.



M.R.D.  
June 1/59  
Sept 9/59



THIS TWP. PATENTED NOT OPEN FOR

STAKING UNDER MINING ACT

LOWTHER TWP.

STAUNTON TWP.

EBBS TWP.

ORKNEY TWP.

Surface reservations 400' wide by Dept. of L. & F.  
Shewn hereon thus



**REFERENCES**

**AREAS WITHDRAWN FROM DISPOSITION**

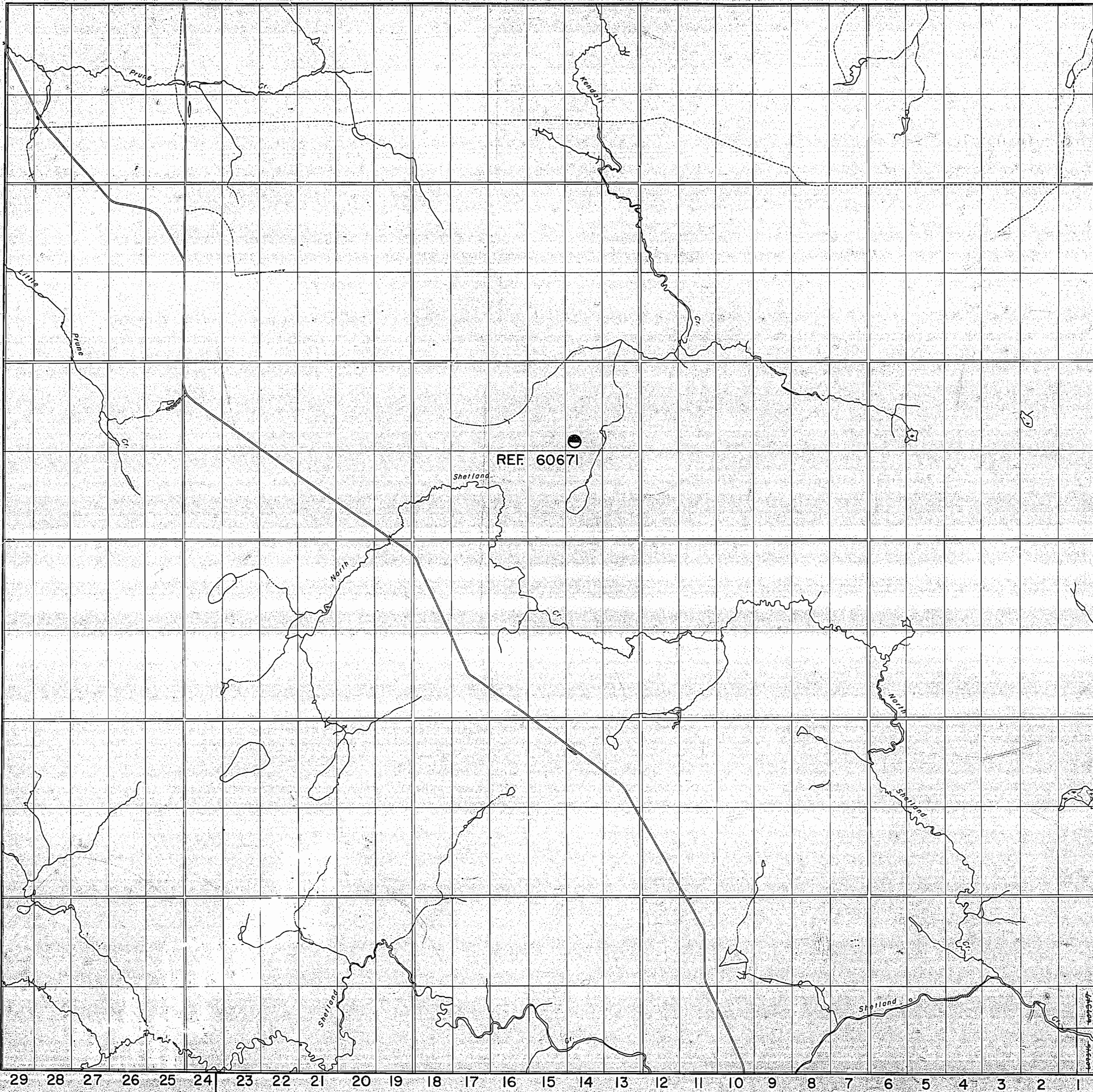
M.R.O. - MINING RIGHTS ONLY  
 S.R.O. - SURFACE RIGHTS ONLY  
 M.+S. - MINING AND SURFACE RIGHTS

Description	Order No.	Date	Disposition	File

KENDALL TWP G-2890

LOWTHER TWP G-2329

STAUNTON TWP G-2353



EBBS TWP G-2305

ORKNEY TWP G-2342

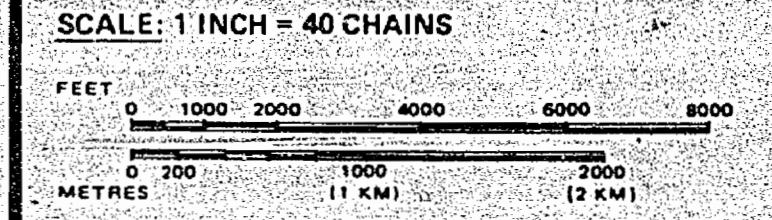
**LEGEND**

- HIGHWAY AND ROUTE No.
- OTHER ROADS
- TRAILS
- SURVEYED LINES:
  - TOWNSHIPS, BASE LINES, ETC.
  - LOTS, MINING CLAIMS, PARCELS, ETC.
- UNSURVEYED LINES:
  - LOT LINES
  - PARCEL BOUNDARY
  - MINING CLAIMS ETC.
- RAILWAY AND RIGHT OF WAY
- UTILITY LINES
- NON-PERENNIAL STREAM
- FLOODING OR FLOODING RIGHTS
- SUBDIVISION OR COMPOSITE PLAN
- RESERVATIONS
- ORIGINAL SHORELINE
- MARSH OR MUSKEG
- MINES
- TRAVERSE MONUMENT

**DISPOSITION OF CROWN LANDS**

TYPE OF DOCUMENT	SYMBOL
PATENT, SURFACE & MINING RIGHTS	
" SURFACE RIGHTS ONLY	
" MINING RIGHTS ONLY	
LEASE, SURFACE & MINING RIGHTS	
" SURFACE RIGHTS ONLY	
" MINING RIGHTS ONLY	
LICENCE OF OCCUPATION	
ORDER-IN-COUNCIL	
RESERVATION	
CANCELLED	
SAND & GRAVEL	

NOTE: MINING RIGHTS IN PARCELS PATENTED PRIOR TO MAY 6, 1912, VESTED IN ORIGINAL PATENTEE BY THE PUBLIC LANDS ACT, R.S.O. 1970, CHAP. 380, SEC. 63, SUBSEC. 1.



THE INFORMATION THAT APPEARS ON THIS MAP HAS BEEN COMPILED FROM VARIOUS SOURCES, AND ACCURACY IS NOT GUARANTEED. THOSE WISHING TO STAKE MINING CLAIMS SHOULD CONSULT WITH THE MINING RECORDER, MINISTRY OF NORTHERN DEVELOPMENT AND MINES, FOR ADDITIONAL INFORMATION ON THE STATUS OF THE LANDS SHOWN HEREON.

TOWNSHIP  
**SHETLAND**  
 M.N.R. ADMINISTRATIVE DISTRICT  
**HEARST**  
 MINING DIVISION  
**PORCUPINE**  
 LAND TITLES / REGISTRY DIVISION  
**COCHRANE**

Ministry of Natural Resources  
 Land Management Branch  
 Ontario

Date: MARCH, 1984  
 Number: **G-2351**  
 Revised: May 31, 1984

# PLAN OF SHETLAND TWP.

M.1343

PORCUPINE MINING DIVISION  
DISTRICT OF ALGOMA.

ONTARIO  
MINISTRY OF NATURAL RESOURCES  
SURVEYS AND MAPPING BRANCH

Scale, 40 chains to an inch.

## KENDALL TWP.



LOWTHER TWP.

STAUNTON TWP.

ALL THIS TWP. PATENTED

FOR S.R.O.

12

11

10

9

8

7

6

5

4

3

2

1