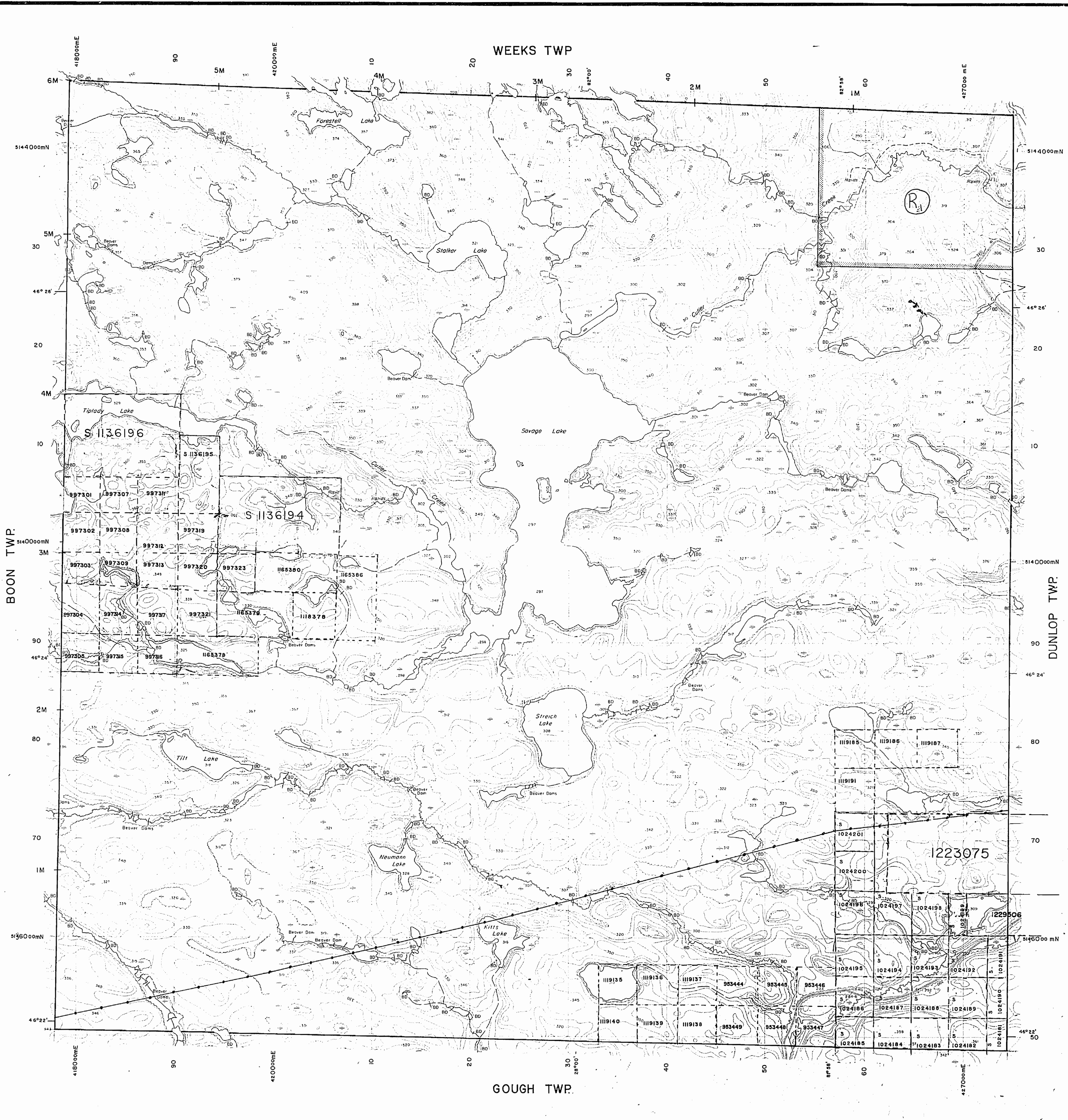


MAP SYMBOLOLOGY

Aerial Cableway	Pipeline (lease ground)
Boundary	Railroad
Intermittent	Single Track
Disturbance	Double Track
Intermittent	Abandoned
Approximate	Turntable
Lot, Concession	Road
Approximate	Highway, County
Path Boundary	Tennessee
Bridge	Access (road of doubtful maintenance or unimproved driveway)
Mass, Railroad	Trail, Bush Road (portage, alley)
Building	Rapids
Chimney	Double line river with multiple rapids
Cliff, Pit, Pile	Double line river with multiple rapids
Contours	Double line river with multiple rapids
Intermittent	Reservoir
Approximate	River, Stream, Canal
Disruption	Approximate
Control Points	Approximate
Horizontal	Direction of flow
Vertical	Fork
Culvert	Spot Elevation (less elevation)
Falls	Tower
Double line river	Transmission Line
Fence, Hedge, Wall	Pylon
Feature Outline (Constructive features, etc.)	Tunnel
Flooded Land	Utility Poles
Lock	Wharf, Dock, Pier
Marsh or Swamp	Wooded Area
Mast	
Mine Head Frame	
Outcrop	

AREAS WITHDRAWN FROM DISPOSITION

M.R.O. - MINING RIGHTS ONLY				
S.R.O. - SURFACE RIGHTS ONLY				
M+S.S. - MINING AND SURFACE RIGHTS				
Description	Order No.	Date	Disposition	File
(R) SEC.185(1) 0-5-38/94 94/11/01 M+S 195150		11/1/84	S.R.O.	137485
(R) SEC.185(1) W-5-50/93 93/10/02 M.R.S 195150				



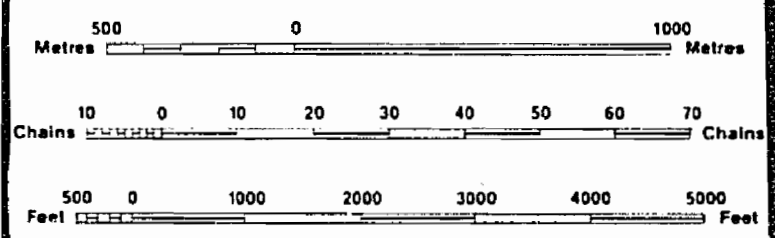
LEGEND

HIGHWAY AND ROUTE No.	
OTHER ROADS	
TRAILS	
SURVEYED LINES:	
TOWNSHIPS, BASE LINES, ETC.	
LOTS, MINING CLAIMS, PARCELS, ETC.	
UNSURVEYED LINES	
LOT LINES	
PARCEL BOUNDARY	
MINING CLAIMS ETC.	
RAILWAY AND RIGHT OF WAY	
UTILITY LINES	
NON-PERENNIAL STREAM	
FLOODING OR FLOODING RIGHTS	
SUBDIVISION OR COMPOSITE PLAN	
RESERVATIONS	
ORIGINAL SHORELINE	
MARSH OR MUSKEG	
MINES	
TRAVERSE MONUMENT	

DISPOSITION OF CROWN LANDS

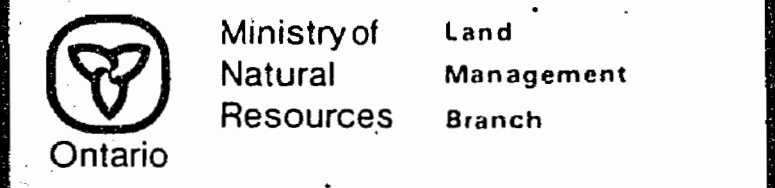
TYPE OF DOCUMENT	SYMBOL
PATENT, SURFACE & MINING RIGHTS	
" SURFACE RIGHTS ONLY	
" MINING RIGHTS ONLY	
LEASE, SURFACE & MINING RIGHTS	
" SURFACE RIGHTS ONLY	
" MINING RIGHTS ONLY	
LICENCE OF OCCUPATION	
ORDER-IN-COUNCIL	
RESERVATION	
CANCELLED	
SAND & GRAVEL	

NOTE: MINING RIGHTS IN PARCELS PATENTED PRIOR TO MAY 6, 1913, VESTED IN ORIGINAL PATENTEE BY THE PUBLIC LANDS ACT, R.S.O. 1910, CHAP. 380, SEC. 63, SUBSEC. 1.



THE INFORMATION THAT APPEARS ON THIS MAP HAS BEEN COMPILED FROM VARIOUS SOURCES, AND ACCURACY IS NOT GUARANTEED. THOSE WISHING TO STAKE MINING CLAIMS SHOULD CONSULT WITH THE MINING RECORDER, MINISTRY OF NORTHERN DEVELOPMENT AND MINES, FOR ADDITIONAL INFORMATION ON THE STATUS OF THE LANDS SHOWN HEREON.

TOWNSHIP  
**SHIBANANING**  
M.N.R. ADMINISTRATIVE DISTRICT  
ESPANOLA  
MINING DIVISION  
SUDBURY  
LAND, TITLES / REGISTRY DIVISION  
SUDBURY

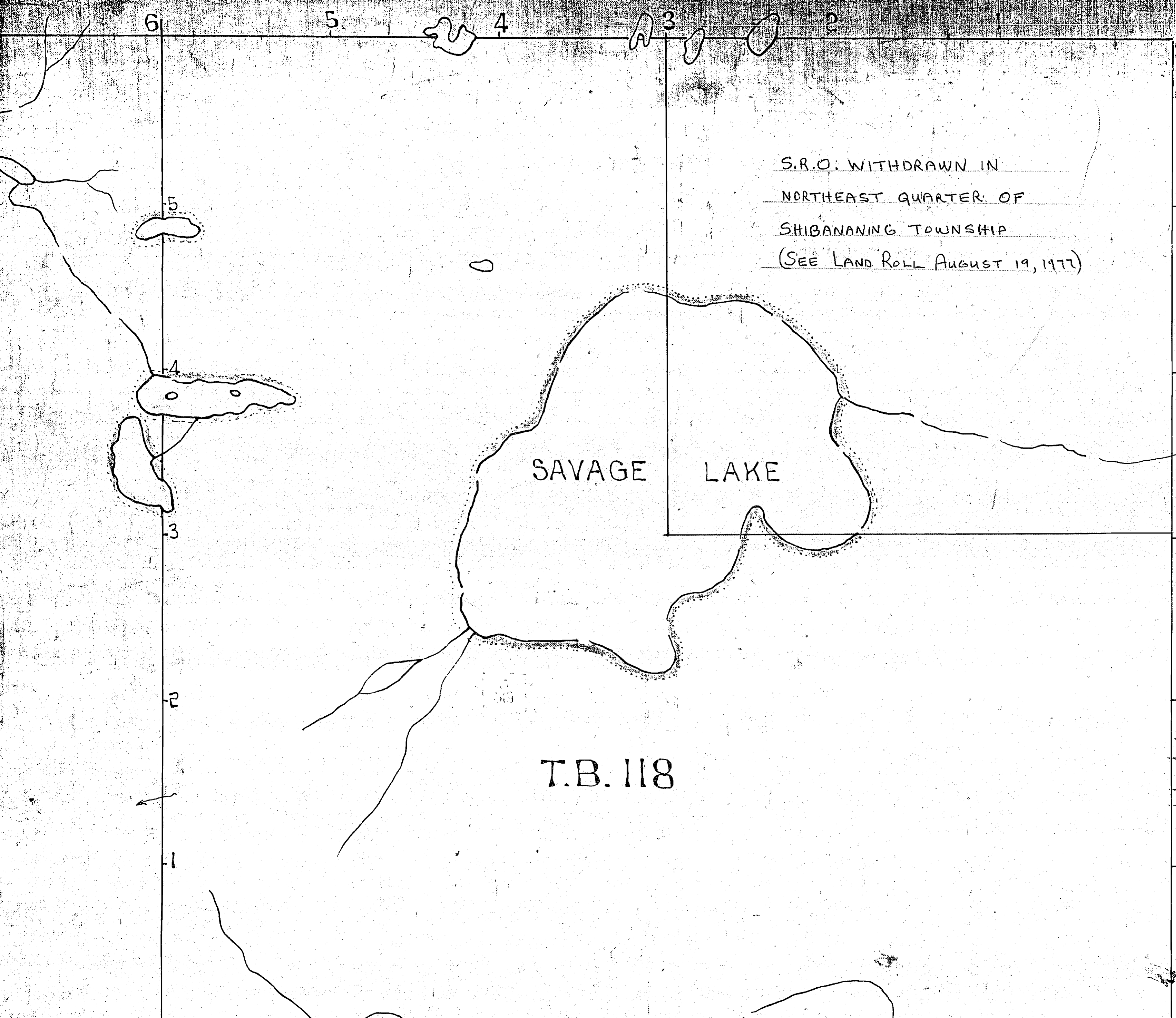


ORIGINAL COMPILATION NOVEMBER 1984  
REVISED: **G-2866**

1202

M1202

T.B. 119



S.R.O. WITHDRAWN IN  
 NORTHEAST QUARTER OF  
 SHIBANANING TOWNSHIP  
 (SEE LAND ROLL AUGUST 19, 1977)

SUDBURY  
 MINING DIV.  
**RECEIVED**  
 JUL 8 1971  
 A.M. P.M.  
 7, 8, 9, 10, 11, 12, 1, 2, 3, 4, 5, 6

DUNLOP

T.B. 118

S.R.O. WITHDRAWN IN  
 ALL OF SHIBANANING  
 TOWNSHIP  
 (SEE LAND ROLL  
 AUGUST 5, 1976)

BLANKET QUARRY  
 PERMIT # 7289  
 COVERS PART  
 OF SHIBANANING  
 TWP.

400' wide reservations on surface by Dept. of L. & F.  
 shown hereon thus

GOUGH

Sand & Gravel on all unpatented mining claims  
 in this Township reserved to the Crown.

SHIBANANING  
 formerly TWP 118  
 M1202  
 TWP 118

Areas withdrawn from staking under Section 43 of the Mining Act (R.S.O. 1970)

Order No.	File	Date	Disposition
W. 4182	137685	22/6/78	S.R.O. REOPENED
		22/8/86	SEC. 36 # 81182

(See Acheson Land Roll)

WEEKS TP. M.1203



M.202

ONTARIO

MINISTRY OF NATURAL RESOURCES  
SURVEYS AND MAPPING BRANCH

TOWNSHIP OF SHIBANANING OFFICE USE ONLY  
(TP. 118)

S.R.O. WITHDRAWN FROM STAKING  
SEC. 36 of The Mining Act.  
W. 4182 (See Acheson Land Roll)

SAVAGE LAKE

DUNLOP TP. M.771

BLANKET QUARRY  
10634  
PERMIT # 10190  
COVERS PART OF  
SHIBANANING TWP.  
(See DUNLOP LAND ROLL)

SHIBANANING

GOUGH TP. M.890

400' wide reservations on surface by Dept. of L. & F. shown hereon thus

Sand & Gravel on all unpatented mining claims in this Township reserved to the Crown.

Areas withdrawn from staking under Section 43 of the Mining Act (R.S.O. 1970)

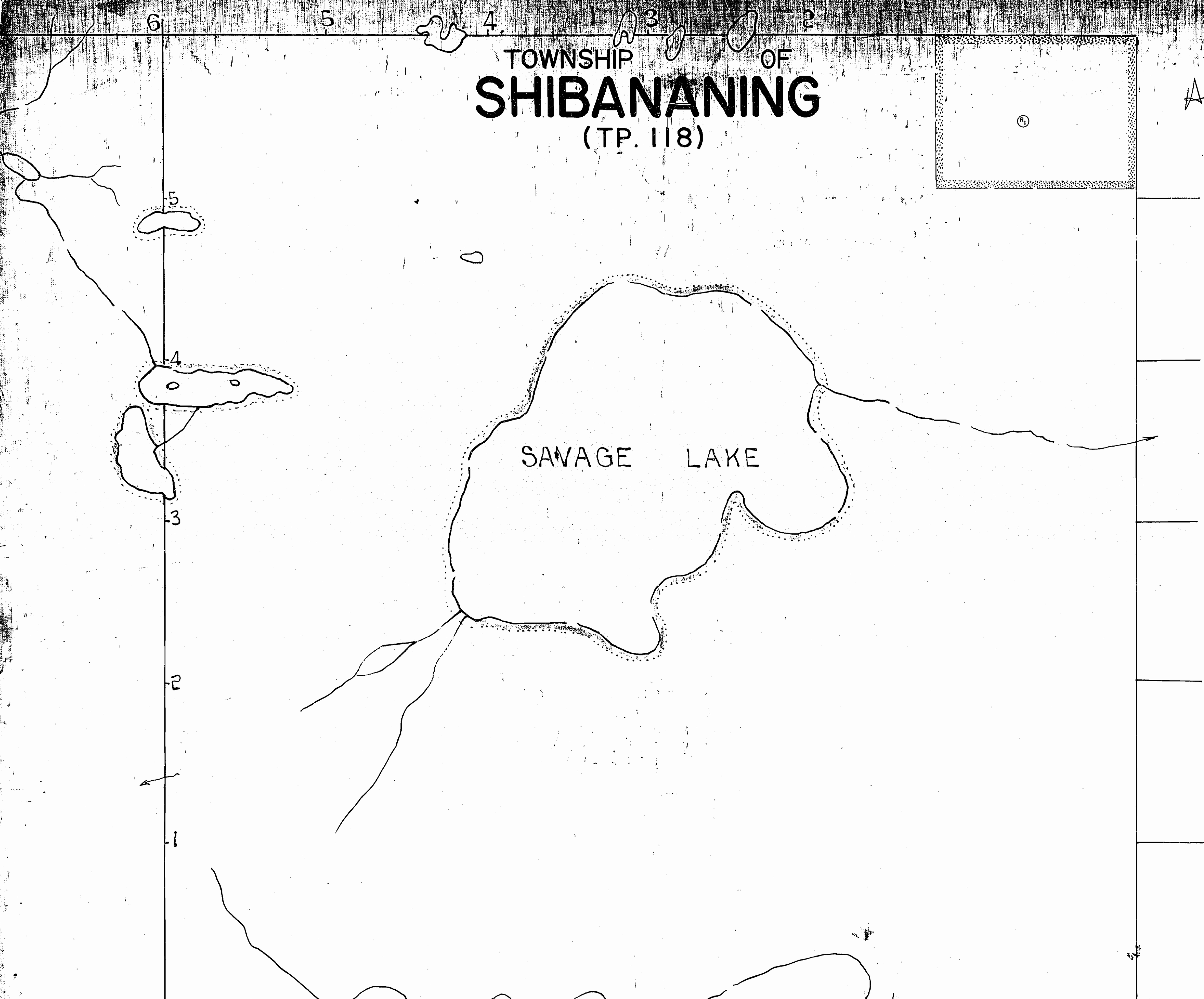
Order No. File Date Disposition  
W. 4/82 137685 14/6/82 S.R.O.

WEEKS TP. M. 203

M. 202  
ONTARIO  
MINISTRY OF NATURAL RESOURCES  
SURVEYS AND MAPPING BRANCH

TOWNSHIP OF  
**SHIBANANING**  
(TP. 118)

Aug 22/84



DUNLOP TP. M. 771

400' wide reservations on surface by Dept. of L. & F. shown hereon thus

Sand & Gravel on all unpatented mining claims in this Township reserved to the Crown.

GOUGH TP. M. 890

**SHIBANANING**

8 6 4 2 2 4 6 8

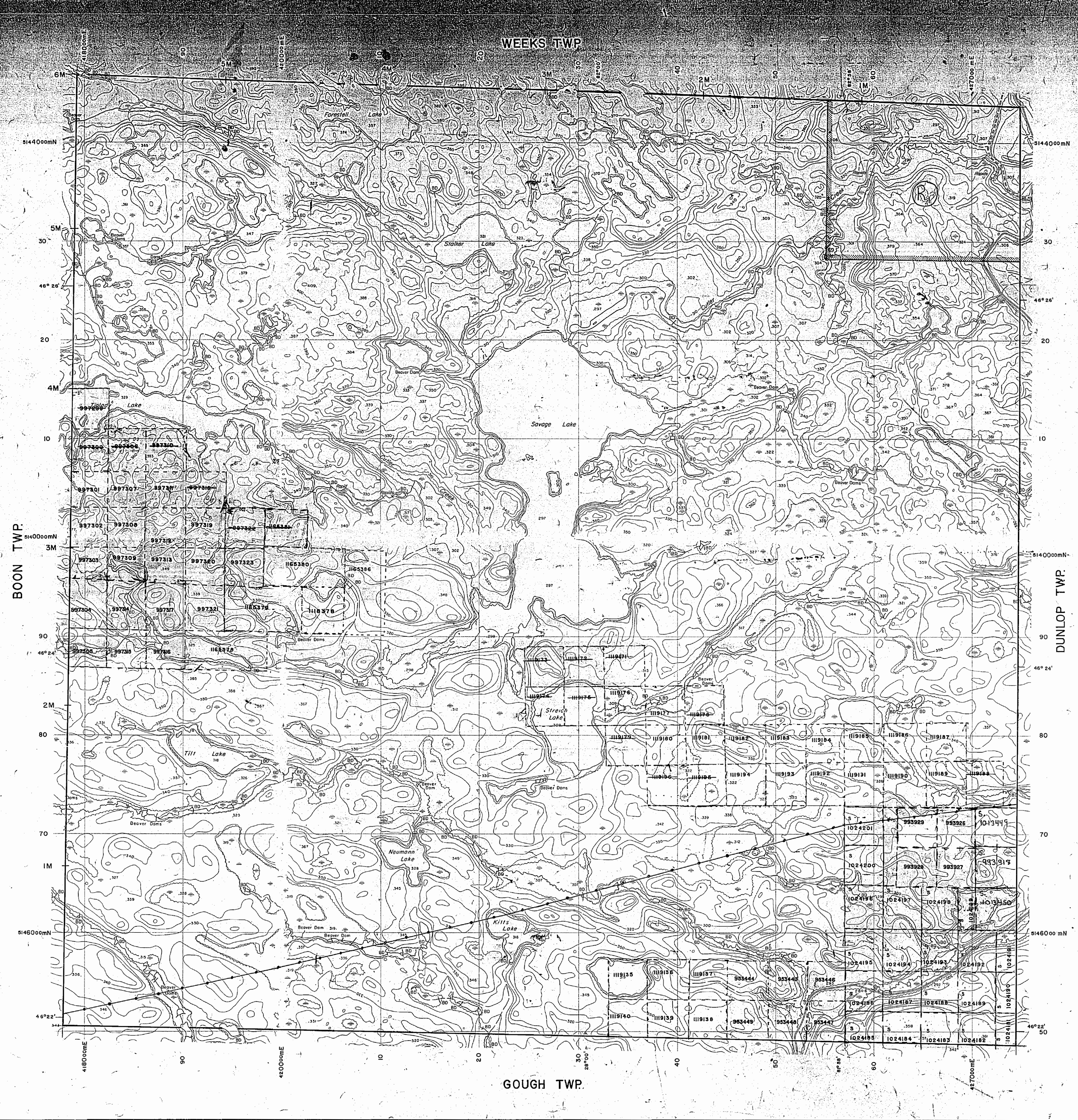
**MAP SYMBOLS**

<b>Aerial Cableway</b>	<b>Pipeline</b> (above ground)
<b>Boundary</b>	<b>Railroad</b>
<b>International</b>	<b>State Road</b>
<b>Interprovincial</b>	<b>County Road</b>
<b>Provincial</b>	<b>Local Road</b>
<b>Dist. Territory</b>	<b>Trail, Back Road</b> (outlook, street)
<b>Water Reserve</b>	<b>Road</b>
<b>Approach</b>	<b>Highway, County</b>
<b>Lot, Concession</b>	<b>Township</b>
<b>Approach</b>	<b>Access (road or doubtful)</b>
<b>Part Boundary</b>	<b>Access (road or doubtful)</b>
<b>Bridge</b>	<b>Access (road or doubtful)</b>
<b>Road, Railroad</b>	<b>Access (road or doubtful)</b>
<b>Building</b>	<b>Access (road or doubtful)</b>
<b>Chimney</b>	<b>Access (road or doubtful)</b>
<b>Cliff, Pit, Pile</b>	<b>Access (road or doubtful)</b>
<b>Contours</b>	<b>Access (road or doubtful)</b>
<b>Interpreted</b>	<b>Access (road or doubtful)</b>
<b>Approximate</b>	<b>Access (road or doubtful)</b>
<b>Depression</b>	<b>Access (road or doubtful)</b>
<b>Control Points</b>	<b>Access (road or doubtful)</b>
<b>Horizontal</b>	<b>Access (road or doubtful)</b>
<b>Vertical</b>	<b>Access (road or doubtful)</b>
<b>Culvert</b>	<b>Access (road or doubtful)</b>
<b>Falls</b>	<b>Access (road or doubtful)</b>
<b>Double line river</b>	<b>Access (road or doubtful)</b>
<b>Fence, Hedge, Wall</b>	<b>Access (road or doubtful)</b>
<b>Feature Outline</b> (contour feature, etc.)	<b>Access (road or doubtful)</b>
<b>Flooded Land</b>	<b>Access (road or doubtful)</b>
<b>Lock</b>	<b>Access (road or doubtful)</b>
<b>Marsh or Swamp</b>	<b>Access (road or doubtful)</b>
<b>Mast</b>	<b>Access (road or doubtful)</b>
<b>Mine Head Frame</b>	<b>Access (road or doubtful)</b>
<b>Outcrop</b>	<b>Access (road or doubtful)</b>

**AREAS WITHDRAWN FROM DISPOSITION**

M.R.O. - MINING RIGHTS ONLY  
 S.R.O. - SURFACE RIGHTS ONLY  
 M.+S. - MINING AND SURFACE RIGHTS

Description	Order No.	Date	Disposition	File
(K)	4/82	10/1/84	S.R.O.	137485
SEC.185(1) G-3-38194	94/11/01	M & S	195150	
SEC.185(1) W-5-50193	93/09/02	M & S	132150	



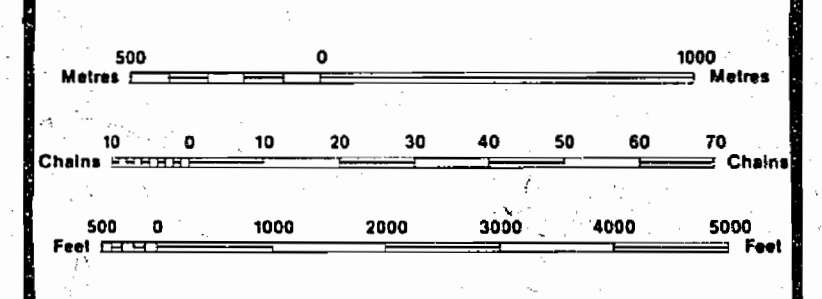
**LEGEND**

<b>HIGHWAY AND ROUTE NO.</b>	
<b>OTHER ROADS</b>	
<b>TRAILS</b>	
<b>SURVEYED LINES</b>	
<b>TOWNSHIPS, BASE LINES, ETC.</b>	
<b>LOTS, MINING CLAIMS, PARCELS, ETC.</b>	
<b>UNSURVEYED LINES</b>	
<b>LOT LINES</b>	
<b>PARCEL BOUNDARY</b>	
<b>MINING CLAIMS ETC.</b>	
<b>RAILWAY AND RIGHT OF WAY</b>	
<b>UTILITY LINES</b>	
<b>NON-PERENNIAL STREAM</b>	
<b>FLOODING OR FLOODING RIGHTS</b>	
<b>SUBDIVISION OR COMPOSITE PLAN</b>	
<b>RESERVATIONS</b>	
<b>ORIGINAL SHORELINE</b>	
<b>MARSH OR MUSKEG</b>	
<b>MINES</b>	
<b>TRAVERSE MONUMENT</b>	

**DISPOSITION OF CROWN LANDS**

TYPE OF DOCUMENT	SYMBOL
PATENT, SURFACE & MINING RIGHTS	
" SURFACE RIGHTS ONLY	
" MINING RIGHTS ONLY	
LEASE, SURFACE & MINING RIGHTS	
" SURFACE RIGHTS ONLY	
" MINING RIGHTS ONLY	
LICENCE OF OCCUPATION	
ORDER-IN-COUNCIL	
RESERVATION	
CANCELLED	
SAND & GRAVEL	

NOTE: MINING RIGHTS IN PARCELS PATENTED PRIOR TO MAY 6, 1912, VESTED IN ORIGINAL PATENTEE BY THE PUBLIC LANDS ACT, R.S.O. 1970, CHAP. 380, SEC. 63, SUBSEC. 1.



DATE OF ISSUE  
 JUN 20 1985  
 SHIBANANING  
 MINING RECORDER'S OFFICE

THE INFORMATION THAT APPEARS ON THIS MAP HAS BEEN COMPILED FROM VARIOUS SOURCES, AND ACCURACY IS NOT GUARANTEED. THOSE WISHING TO STAKE MINING CLAIMS SHOULD CONSULT WITH THE MINING RECORDER, MINISTRY OF NORTHERN DEVELOPMENT AND MINES, FOR ADDITIONAL INFORMATION ON THE STATUS OF THE LANDS SHOWN HEREON.

TOWNSHIP  
**SHIBANANING**  
 M.N.R. ADMINISTRATIVE DISTRICT  
 ESPANOLA  
 MINING DIVISION  
 SUDBURY  
 LAND, TITLES / REGISTRY DIVISION  
 SUDBURY

Ministry of Natural Resources  
 Land Management Branch  
 Ontario

ORIGINAL NOVEMBER 1984  
 REVISIONS: Number  
**G-2866**

G-5866

SHIBANANING TWP

G-5866

MAP SYMBOLOLOGY

Aerial Cableway	Pipeline (above ground)
Boundary	Railroad
Contour Interval	Single Track
District, Township	Double Track
Decision Reserve	Abandoned
Approximate	Turbine
Lot, Concession	Road
Approximate	Highway, County
Park Boundary	Township
Bridge	Access (road of doubtful maintenance or significant driveway)
Road, Railroad	Traffic, Beach Road (bridge, alley)
Building	Rapids
Chimney	Double line river with multiple rapids
Cliff, Pit, Pile	Doubt line river with multiple rapids
Contours	Reservoir
Intermittent	River, Stream, Canal
Approximate	Approximate
Depression	Direction of flow
Control Points	Rock
Horizontal	Spot Elevation (like elevations)
Vertical	Tower
Culvert	Transmission Line
Falls	Pole
Doubt line river	Pyram
Fence, Hedge, Wall	Tunnel
Feature Outline (Construction features, etc.)	Utility Poles
Flooded Land	Wharf, Dock, Pier
Lock	Wooded Area
Marsh or Swamp	
Mast	
Mine Head Frame	
Outcrop	

AREAS WITHDRAWN FROM DISPOSITION

M.R.O. - MINING RIGHTS ONLY				
S.R.O. - SURFACE RIGHTS ONLY				
M.+S. - MINING AND SURFACE RIGHTS				
Description	Order No.	Date	Disposition	File
SEC.185(1)	W-3-50/93	93/09/02	M.R.S	195150

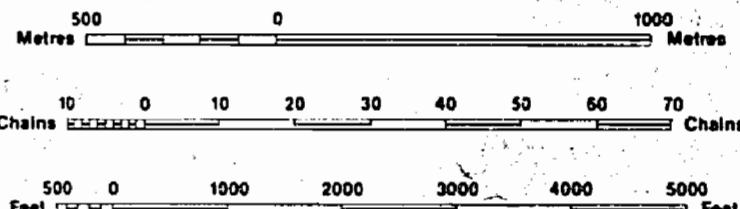
LEGEND

HIGHWAY AND ROUTE No.	
OTHER ROADS	
TRAILS	
SURVEYED LINES:	
TOWNSHIPS, BASE LINES, ETC.	
LOTS, MINING CLAIMS, PARCELS, ETC.	
UNSURVEYED LINES:	
LOT LINES	
PARCEL BOUNDARY	
MINING CLAIMS ETC.	
RAILWAY AND RIGHT OF WAY	
UTILITY LINES	
NON-PERENNIAL STREAM	
FLOODING OR FLOODING RIGHTS	
SUBDIVISION OR COMPOSITE PLAN	
RESERVATIONS	
ORIGINAL SHORELINE	
MARSH OR MUSKEL	
MINES	
TRAVERSE MONUMENT	

DISPOSITION OF CROWN LANDS

TYPE OF DOCUMENT	SYMBOL
PATENT, SURFACE & MINING RIGHTS	●
" SURFACE RIGHTS ONLY	○
" MINING RIGHTS ONLY	○
LEASE, SURFACE & MINING RIGHTS	■
" SURFACE RIGHTS ONLY	■
" MINING RIGHTS ONLY	■
LICENCE OF OCCUPATION	▼
ORDER-IN-COUNCIL	○
RESERVATION	○
CANCELLED	○
SAND & GRAVEL	○

NOTE: MINING RIGHTS IN PARCELS PATENTED PRIOR TO MAY 6, 1913, VESTED IN ORIGINAL PATENTEE BY THE PUBLIC LANDS ACT, R.S.O. 1910, CHAP. 380, SEC. 63, SUBSEC. 1.



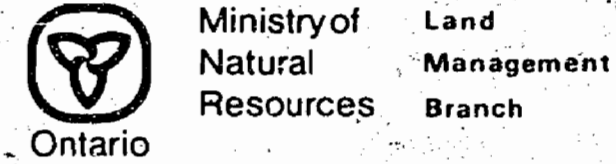
SCALE 1:20 000  
GRID ZONE 17

DATE OF ISSUE  
JAN 1 1994  
SUDBURY  
MINING RECORDER'S OFFICE

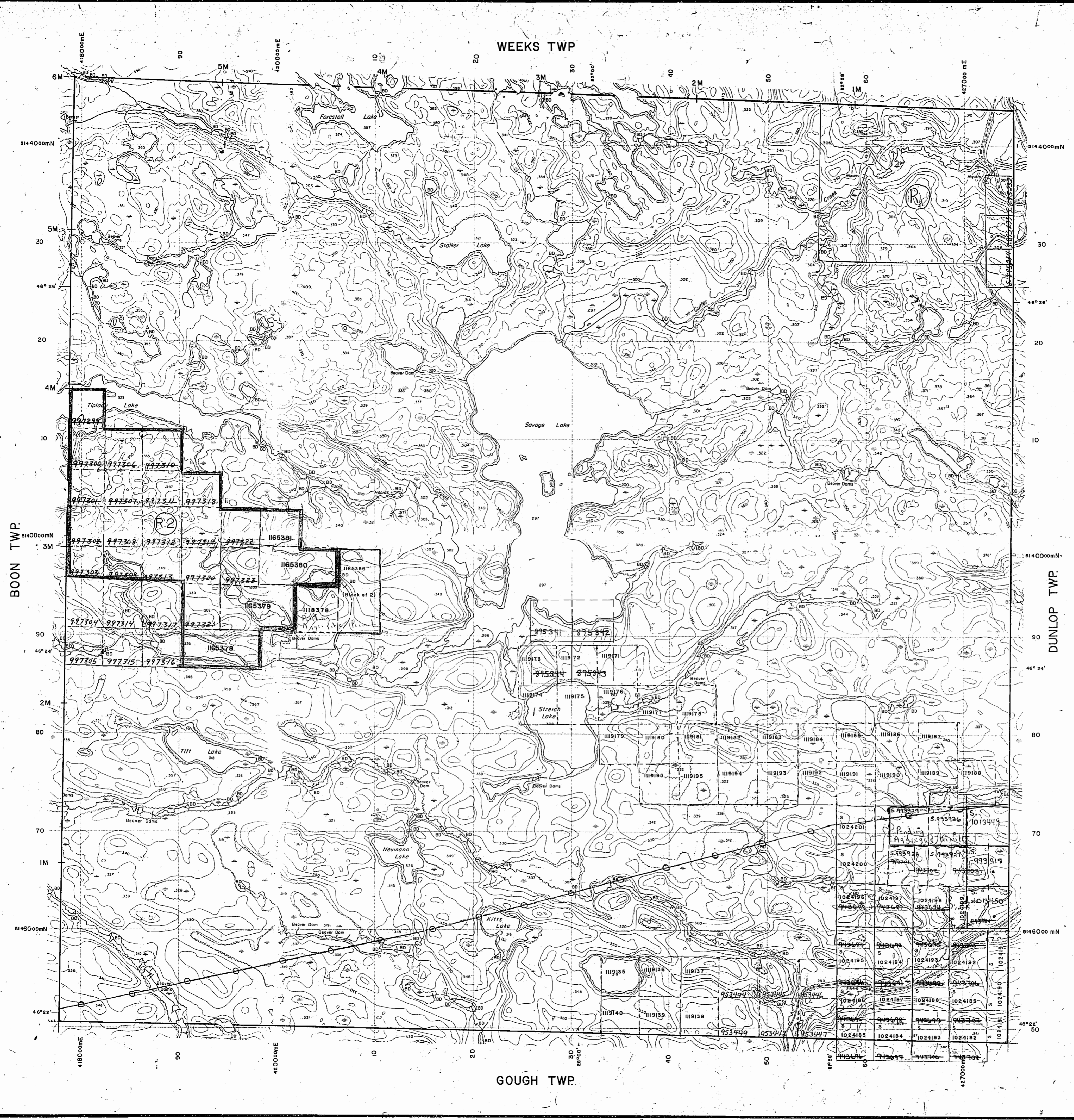
Pending App Permit Dec 9/92

THE INFORMATION THAT APPEARS ON THIS MAP HAS BEEN COMPILED FROM VARIOUS SOURCES, AND ACCURACY IS NOT GUARANTEED. THOSE WISHING TO STAKE MINING CLAIMS SHOULD CONSULT WITH THE MINING RECORDER, MINISTRY OF NORTHERN DEVELOPMENT AND MINES, FOR ADDITIONAL INFORMATION ON THE STATUS OF THE LANDS SHOWN HEREON.

TOWNSHIP  
**SHIBANANING**  
M.N.R. ADMINISTRATIVE DISTRICT  
ESPANOLA  
MINING DIVISION  
SUDBURY  
LAND TITLES / REGISTRY DIVISION  
SUDBURY



ORIGINAL COMPILATION NOVEMBER 1984  
REVISED:  
Number  
**G-2866**



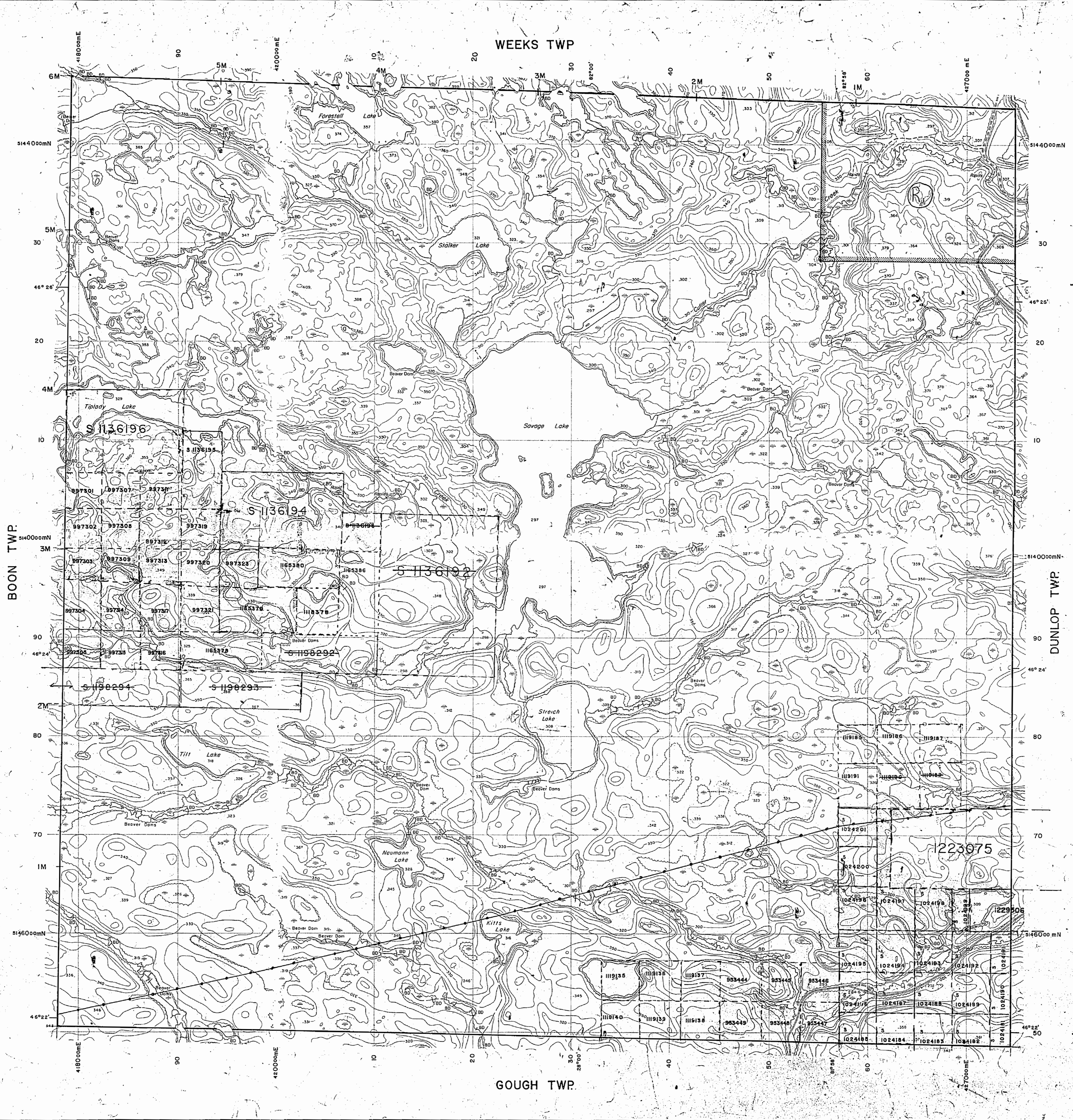
**MAP SYMBOLOLOGY**

<b>Aerial Cableway</b>	<b>Pipeline</b> (above ground)
<b>Boundary</b>	<b>Railroad</b>
Intermittent	Single Track
Intermittent	Double Track
District, Township	Abandoned
Index Reserve	Turbidite
Approximate	<b>Road</b>
Lot, Concession	Highway, County
Approximate	Township
<b>Park Boundary</b>	Access (road of doubtful
<b>Bridge</b>	existence or
Wood, Railroad	width)
<b>Building</b>	Trail, Bush Road
Chimney	(garage, alley)
Cliff, Pit, Pile	<b>Rapids</b>
<b>Contours</b>	Double line river
Intermittent	with multiple rapids
Approximate	Double line river
Depression	with multiple rapids
<b>Control Points</b>	<b>Reservoir</b>
Horizontal	Approximate
Vertical	Location
<b>Culvert</b>	Direction of flow
<b>Falls</b>	Rock
Double line river	significant
Fence, Hedge, Wall	Shoal
<b>Feature Outline</b> (Construction features, etc.)	Spot Elevation (See elevations)
<b>Flooded Land</b>	Tower
<b>Lock</b>	Transmission Line
<b>Marsh or Swamp</b>	Feasible
<b>Mast</b>	Project
<b>Mine Head Frame</b>	Tunnel
<b>Outcrop</b>	Utility Poles
	Wharf, Dock, Pier
	Wooded Area

**AREAS WITHDRAWN FROM DISPOSITION**

M.R.O. - MINING RIGHTS ONLY  
 S.R.O. - SURFACE RIGHTS ONLY  
 M.+S. - MINING AND SURFACE RIGHTS

Description	Order No.	Date	Disposition	File
SEC.185(1) O-3-38/94	94/11/01	M & S	195150	
SEC.185(1) W-5-50/93	93/10/02	M.R.S.	122500	



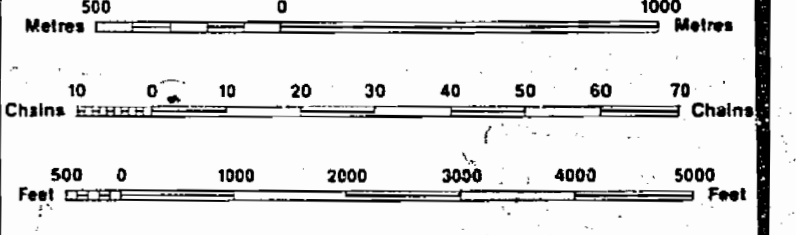
**LEGEND**

HIGHWAY AND ROUTE No.	
OTHER ROADS	
TRAILS	
SURVEYED LINES:	
TOWNSHIPS, BASE LINES, ETC.	
LOTS, MINING CLAIMS, PARCELS, ETC.	
UNSURVEYED LINES:	
LOT LINES	
PARCEL BOUNDARY	
MINING CLAIMS ETC.	
RAILWAY AND RIGHT OF WAY	
UTILITY LINES	
NON-PERENNIAL STREAM	
FLOODING OR FLOODING RIGHTS	
SUBDIVISION OR COMPOSITE PLAN	
RESERVATIONS	
ORIGINAL SHORELINE	
MARSH OR MUSKOG	
MINES	
TRAVERSE MONUMENT	

**DISPOSITION OF CROWN LANDS**

TYPE OF DOCUMENT	SYMBOL
PATENT, SURFACE & MINING RIGHTS	
" SURFACE RIGHTS ONLY	
" MINING RIGHTS ONLY	
LEASE, SURFACE & MINING RIGHTS	
" SURFACE RIGHTS ONLY	
" MINING RIGHTS ONLY	
LICENCE OF OCCUPATION	
ORDER-IN-COUNCIL	
RESERVATION	
CANCELLED	
SAND & GRAVEL	

NOTE: MINING RIGHTS IN PARCELS PATENTED PRIOR TO MAY 6, 1973, VESTED IN ORIGINAL PATENTEE BY THE PUBLIC LANDS ACT, R.S.O. 1970, CHAP. 380, SEC. 63, SUBSEC 1.



SCALE 1:20,000  
 GRID ZONE 17

THE INFORMATION THAT APPEARS ON THIS MAP HAS BEEN COMPILED FROM VARIOUS SOURCES, AND ACCURACY IS NOT GUARANTEED. THOSE WISHING TO STAKE MINING CLAIMS SHOULD CONSULT WITH THE MINING RECORDER, MINISTRY OF NORTHERN DEVELOPMENT AND MINES, FOR ADDITIONAL INFORMATION ON THE STATUS OF THE LANDS SHOWN HEREON.

**DATE OF ISSUE**  
 OCT 24 1998

PROVINCIAL RECORDING  
 OFFICE - SUDBURY

TOWNSHIP

# SHIBANANING

M.N.R. ADMINISTRATIVE DISTRICT

ESPANOLA  
 MINING DIVISION

SUDBURY  
 LAND TITLES / REGISTRY DIVISION

SUDBURY

Ontario Ministry of Natural Resources Land Management Branch

ORIGINAL NOVEMBER 1984  
 REVISIONS: 1

Number  
**G-2866**

Areas withdrawn from staking under Section 43 of the Mining Act (R.S.O. 1970).

Order No. File Date Disposition

137685	22/10/72	S.R.O.
W. 4182	22/10/72	S.R.O. REOPENED
		Sec. 36 of 1972

(See Acton Land Roll)

WEEKS TP. M.203



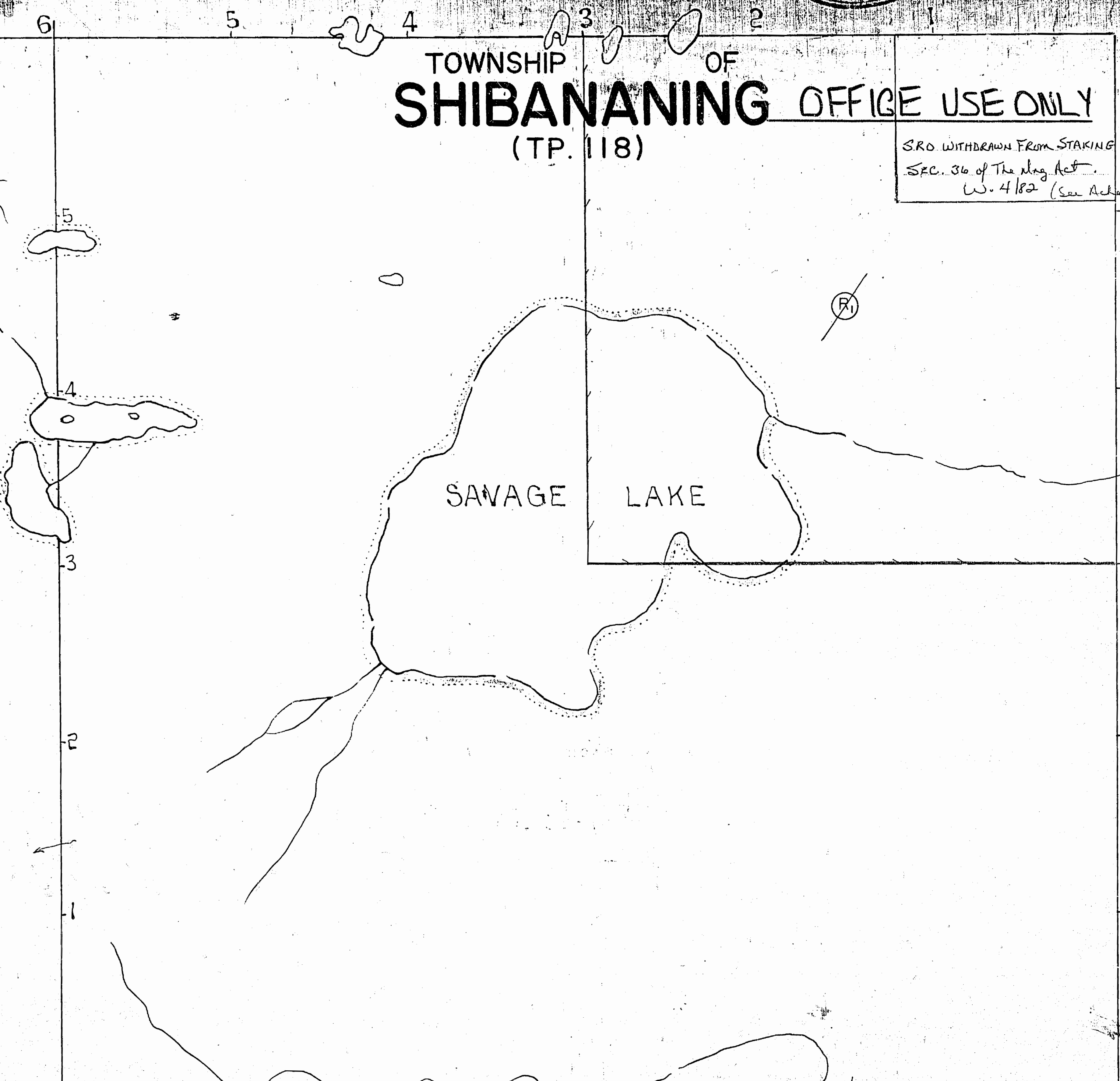
M.202

ONTARIO

MINISTRY OF NATURAL RESOURCES  
SURVEYS AND MAPPING BRANCH

TOWNSHIP OF SHIBANANING OFFICE USE ONLY  
(TP. 118)

S.R.O. WITHDRAWN FROM STAKING  
SEC. 36 of The Mining Act  
W. 4182 (See Acton Land Roll)



DUNLOP TP. M.771

BLANKET QUARRY  
10634  
PERMIT # 10490  
COVERS PART OF  
SHIBANANING TWP.  
(See DUNLOP LAND ROLL)

400' wide reservations on surface by Dept. of L. & F.  
shown hereon thus

SHIBANANING

GOUGH TP. M.890

Sand & Gravel on all unpatented mining claims  
in this Township reserved to the Crown.



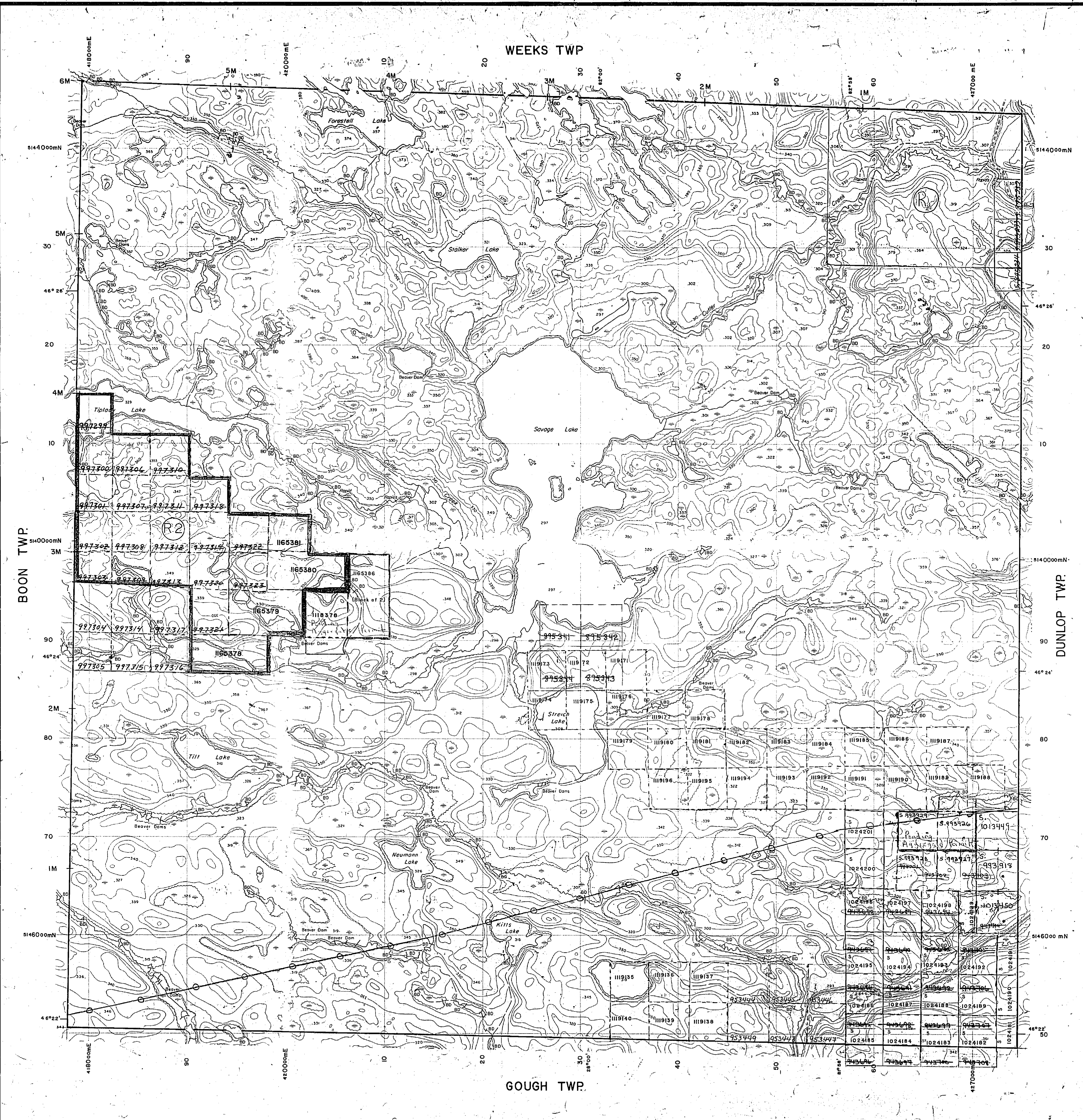
### MAP SYMBOLOLOGY

Aerial Cableway	Pipeline (above ground)
Boundary	Railroad
Intermittent	Single Track
District, Township, Indian Reserve	Double Track
Approximate	Abandoned
Lot, Concession, Approximate	Turntable
Park Boundary	Road
Bridge	Highway, County, Township
Road, Railroad, Building	Access (road of doubtful maintenance or significant driveway)
Chimney	Trail, Bush Road (Garage, etc.)
Contours	Rapids
Intermittent	Double line river with multiple rapids
Approximate	Reservoir
Depression	River, Stream, Canal
Control Points	Approximate seasonal, Direction of flow
Horizontal	Rock
Vertical	Significant
Culvert	Spot Elevation (base elevations) -300.0
Falls	Tower
Double line river	Transmission Line
Fence, Hedge, Well	Pole
Feature Outline (Construction Features, etc.)	Pit
Flooded Land	Tunnel
Lock	Utility Poles
Marsh or Swamp	Wharf, Dock, Pier
Mast	Wooded Area
Mine Head Frame	
Outcrop	

### AREAS WITHDRAWN FROM DISPOSITION

M.R.O. - MINING RIGHTS ONLY  
 S.R.O. - SURFACE RIGHTS ONLY  
 M.+S. - MINING AND SURFACE RIGHTS

Description	Order No.	Date	Disposition	File
(R2) SEC.165(I) W-5-50/93. 93/09/02 M.B.S. 195150	W.4/82	11/1/84	S.R.O.	137485



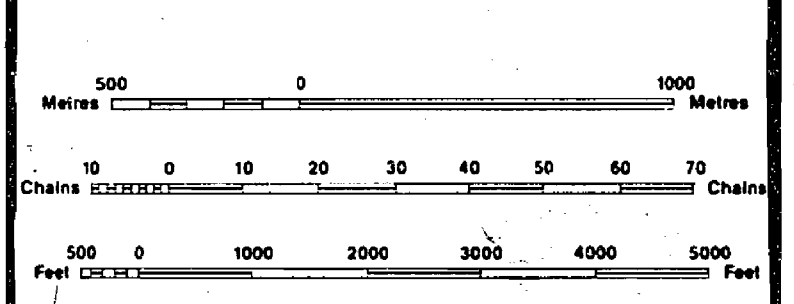
### LEGEND

HIGHWAY AND ROUTE No.	OTHER ROADS
TRAILS	SURVEYED LINES:
	TOWNSHIPS, BASE LINES, ETC.
	LOTS, MINING CLAIMS, PARCELS, ETC.
	UNSURVEYED LINES:
	LOT LINES
	PARCEL BOUNDARY
	MINING CLAIMS ETC.
	RAILWAY AND RIGHT OF WAY
	UTILITY LINES
	NON-PERENNIAL STREAM
	FLOODING OR FLOODING RIGHTS
	SUBDIVISION OR COMPOSITE PLAN
	RESERVATIONS
	ORIGINAL SHORELINE
	MARSH OR MUSKIEG
	MINES
	TRAVERSE MONUMENT

### DISPOSITION OF CROWN LANDS

TYPE OF DOCUMENT	SYMBOL
PATENT, SURFACE & MINING RIGHTS	
" SURFACE RIGHTS ONLY	
" MINING RIGHTS ONLY	
LEASE, SURFACE & MINING RIGHTS	
" SURFACE RIGHTS ONLY	
" MINING RIGHTS ONLY	
LICENCE OF OCCUPATION	
ORDER-IN-COUNCIL	
RESERVATION	
CANCELLED	
SAND & GRAVEL	

NOTE: MINING RIGHTS IN PARCELS PATENTED PRIOR TO MAY 6, 1913, VESTED IN ORIGINAL PATENTEE BY THE PUBLIC LANDS ACT, R.S.O. 1970, CHAP. 380, SEC. 63, SUBSEC. 1.



SCALE 1:20 000  
 GRID ZONE: 17

DATE OF ISSUE  
 JAN 18 1984  
 SUDBURY  
 MINING RECORDERS' OFFICE

Pending App. Point Dec 9/82

THE INFORMATION THAT APPEARS ON THIS MAP HAS BEEN COMPILED FROM VARIOUS SOURCES, AND ACCURACY IS NOT GUARANTEED. THOSE WISHING TO STAKE MINING CLAIMS SHOULD CONSULT WITH THE MINING RECORDER, MINISTRY OF NORTHERN DEVELOPMENT AND MINES, FOR ADDITIONAL INFORMATION ON THE STATUS OF THE LANDS SHOWN HEREON.

TOWNSHIP  
**SHIBANANING**  
 M.N.R. ADMINISTRATIVE DISTRICT  
 ESPANOLA  
 MINING DIVISION  
 SUDBURY  
 LAND TITLES / REGISTRY DIVISION  
 SUDBURY

ORIGINAL COMPILATION NOVEMBER 1984  
 REVISED: **G-2866**

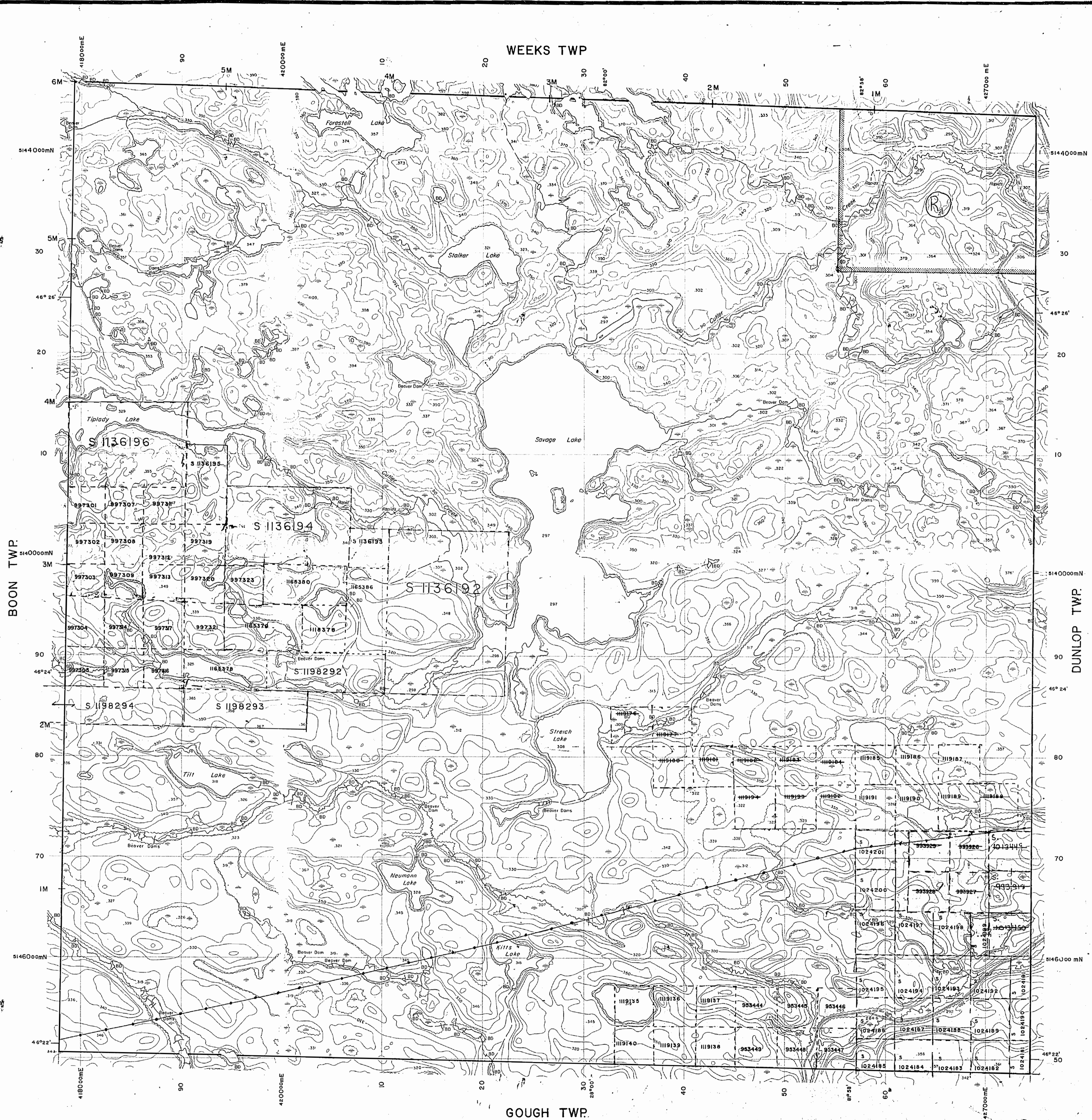
MAP SYMBOLOGY

<b>Aerial Cableway</b>	<b>Pipeline</b> (above ground)
<b>Boundary</b>	<b>Railroad</b>
International	Single Track
Dist. Res. Boundary	Double Track
Approximate	Abandoned
Lot, Concession	Turbidite
Approximate	<b>Road</b>
Park Boundary	Highway, County
<b>Bridge</b>	Township
Road, Railroad	Access Road at doubtful
<b>Building</b>	maintenance or
Chimney	significant driveway
Contours	Trail, Back Road
Interpolated	(postage, utility)
Approximate	<b>Rapids</b>
Depression	Double line river
<b>Control Points</b>	with multiple rapids
Horizontal	Double line river
Vertical	with multiple rapids
Culvert	<b>Reservoir</b>
Falls	River, Stream, Canal
Double line river	Approximate
Fence, Hedge, Wall	Direction of flow
<b>Feature Outline</b>	<b>Spot Elevation</b>
(Construction features, etc.)	(above contours) 300.0
Flooded Land	<b>Tower</b>
Lock	Palisade
Marsh or Swamp	Palisade
Mast	<b>Transmission Line</b>
Mine Head Frame	Tunnel
Outcrop	Utility Poles
	Wharf, Dock, Pier
	Wooded Area

AREAS WITHDRAWN FROM DISPOSITION

M.R.O. - MINING RIGHTS ONLY  
 S.R.O. - SURFACE RIGHTS ONLY  
 M+S - MINING AND SURFACE RIGHTS

Description	Order No.	Date	Disposition	File
SEC.185(1) 0-3-38/94	94/11/01	M+S	195150	137485
SEC.185(1) 0-3-38/94	94/11/01	M+S	195150	137485



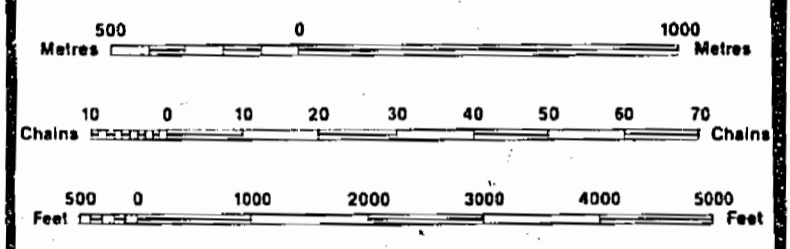
LEGEND

Highway and Route No.	
Other Roads	
Trails	
Surveyed Lines:	
Townships, Base Lines, Etc.	
Lots, Mining Claims, Parcels, Etc.	
Unsurveyed Lines:	
Lot Lines	
Parcel Boundary	
Mining Claims Etc.	
Railway and Right of Way	
Utility Lines	
Non-perennial Stream	
Flooding or Flooding Rights	
Subdivision or Composite Plan	
Reservations	
Original Shoreline	
Marsh or Muskeg	
Mines	
Traverse Monument	

DISPOSITION OF CROWN LANDS

TYPE OF DOCUMENT	SYMBOL
PATENT, SURFACE & MINING RIGHTS	
" SURFACE RIGHTS ONLY	
" MINING RIGHTS ONLY	
LEASE, SURFACE & MINING RIGHTS	
" SURFACE RIGHTS ONLY	
" MINING RIGHTS ONLY	
LICENCE OF OCCUPATION	
ORDER-IN-COUNCIL	
RESERVATION	
CANCELLED	
SAND & GRAVEL	

NOTE: MINING RIGHTS IN PARCELS PATENTED PRIOR TO MAY 6, 1913, VESTED IN ORIGINAL PATENTEE BY THE PUBLIC LANDS ACT, R.S.O. 1970, CHAP. 380, SEC. 43, SUBSEC. 1.



SCALE 1:20 000  
 GRID ZONE: 17

DATE OF ISSUE  
 JUN 01 1998  
 PROVINCIAL RECORDING  
 OFFICE - SUDBURY

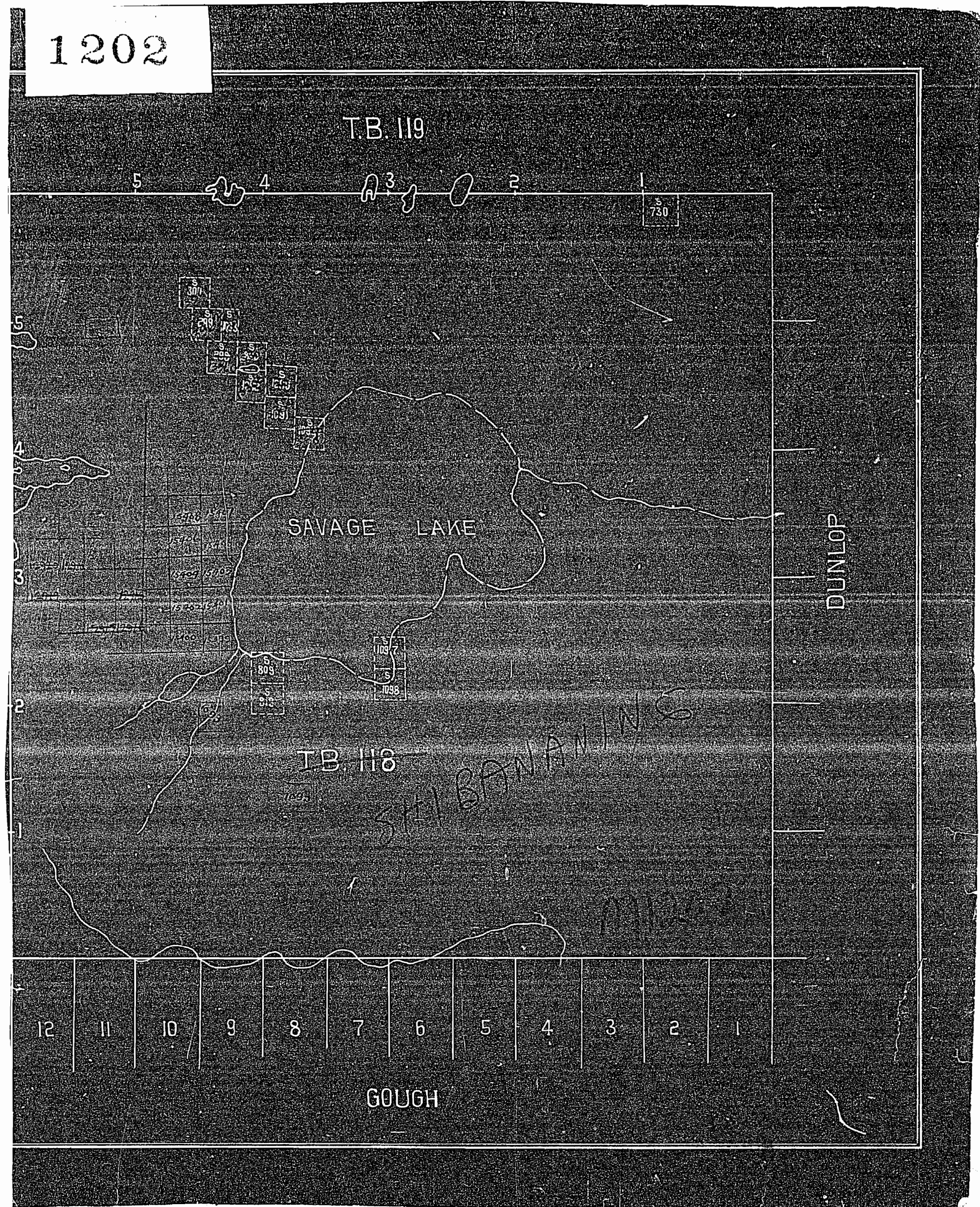
THE INFORMATION THAT APPEARS ON THIS MAP HAS BEEN COMPILED FROM VARIOUS SOURCES, AND ACCURACY IS NOT GUARANTEED. THOSE WISHING TO TAKE MINING CLAIMS SHOULD CONSULT WITH THE MINING RECORDER, MINISTRY OF NORTHERN DEVELOPMENT AND MINES, FOR ADDITIONAL INFORMATION ON THE STATUS OF THE LANDS SHOWN HEREON.

TOWNSHIP  
**SHIBANANING**  
 M.N.R. ADMINISTRATIVE DISTRICT  
 ESPANOLA  
 MINING DIVISION  
 SUDBURY  
 LAND TITLES / REGISTRY DIVISION  
 SUDBURY

Ministry of Natural Resources  
 Land Management Branch  
 Ontario

ORIGINAL COMPILATION NOVEMBER 1984  
 REVISED:  
 Number  
**G-2866**

1202



MAP SYMBOLOLOGY

<b>Aerial Cableway</b>	<b>Pipeline</b>
<b>Boundary</b>	<b>Railroad</b>
<b>International</b>	<b>Single Track</b>
<b>Interprovincial</b>	<b>Double Track</b>
<b>Classical, Domestic</b>	<b>Abandoned</b>
<b>Water Reserve</b>	<b>Turbine</b>
<b>Approximate</b>	<b>Road</b>
<b>Lot, Concession</b>	<b>Highway, County</b>
<b>Approximate</b>	<b>Yearship</b>
<b>Park Boundary</b>	<b>Access (road of doubtful</b>
<b>Bridge</b>	<b>maintenance or</b>
<b>Road, Railroad</b>	<b>significant driveway)</b>
<b>Building</b>	<b>Trait, Bush Road</b>
<b>Chimney</b>	<b>(portage, alley)</b>
<b>Cliff, Pit, Pile</b>	<b>Rapids</b>
<b>Contours</b>	<b>Double line river</b>
<b>Interpreted</b>	<b>with multiple rapids</b>
<b>Approximate</b>	<b>Reservoir</b>
<b>Depression</b>	<b>River, Stream, Canal</b>
<b>Control Points</b>	<b>Approximate</b>
<b>Horizontal</b>	<b>Assessment</b>
<b>Vertical</b>	<b>Direction of flow</b>
<b>Culvert</b>	<b>Rock</b>
<b>Falls</b>	<b>Significant</b>
<b>Double line river</b>	<b>Spot Elevation</b>
<b>Fence, Hedge,</b>	<b>(also elevations) -300.0</b>
<b>Wall</b>	<b>Tower</b>
<b>Feature Outline</b>	<b>Transmission Line</b>
<b>(Construction features,</b>	<b>Palis</b>
<b>etc.)</b>	<b>Palis</b>
<b>Flooded Land</b>	<b>Tunnel</b>
<b>Lock</b>	<b>Utility Poles</b>
<b>Marsh or Swamp</b>	<b>Wharf, Dock, Pier</b>
<b>Mast</b>	<b>Wooded Area</b>
<b>Mine Head Frame</b>	
<b>Outcrop</b>	

AREAS WITHDRAWN FROM DISPOSITION

- M.R.O. - MINING RIGHTS ONLY
- S.R.O. - SURFACE RIGHTS ONLY
- M+S - MINING AND SURFACE RIGHTS

Description	Order No.	Date	Disposition	File
32	38C.185(1)	W-5-50/93	93/09/02	M & S 195150
31		4/82	11/184	C.R.O. 137485

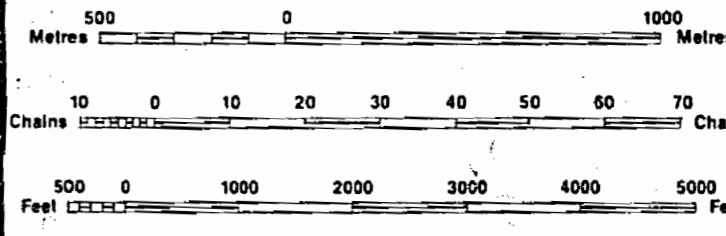
LEGEND

<b>HIGHWAY AND ROUTE No.</b>	
<b>OTHER HOADS</b>	
<b>TRAILS</b>	
<b>SURVEYED LINES:</b>	
<b>TOWNSHIPS, BASE LINES, ETC.</b>	
<b>LOTS, MINING CLAIMS, PARCELS, ETC.</b>	
<b>UNSURVEYED LINES:</b>	
<b>LOT LINES</b>	
<b>PARCEL BOUNDARY</b>	
<b>MINING CLAIMS ETC.</b>	
<b>RAILWAY AND RIGHT OF WAY</b>	
<b>UTILITY LINES</b>	
<b>NON-PERENNIAL STREAM</b>	
<b>FLOODING OR FLOODING RIGHTS</b>	
<b>SUBDIVISION OR COMPOSITE PLAN</b>	
<b>RESERVATIONS</b>	
<b>ORIGINAL SHORELINE</b>	
<b>MARSH OR MUSKEG</b>	
<b>MINES</b>	
<b>TRAVERSE MONUMENT</b>	

DISPOSITION OF CROWN LANDS

TYPE OF DOCUMENT	SYMBOL
PATENT, SURFACE & MINING RIGHTS	
" SURFACE RIGHTS ONLY	
" MINING RIGHTS ONLY	
LEASE, SURFACE & MINING RIGHTS	
" SURFACE RIGHTS ONLY	
" MINING RIGHTS ONLY	
LICENCE OF OCCUPATION	
ORDER-IN-COUNCIL	
RESERVATION	
CANCELLED	
SAND & GRAVEL	

NOTE: MINING RIGHTS IN PARCELS PATENTED PRIOR TO MAY 6, 1913, VESTED IN ORIGINAL PATENTEE BY THE PUBLIC LANDS ACT, R.S.O. 1970, CHAP. 380, SEC. 63, SUBSEC. 1.



SCALE 1:20 000  
GRID ZONE: 17

DATE OF ISSUE  
MAY 6 1984  
SUDBURY

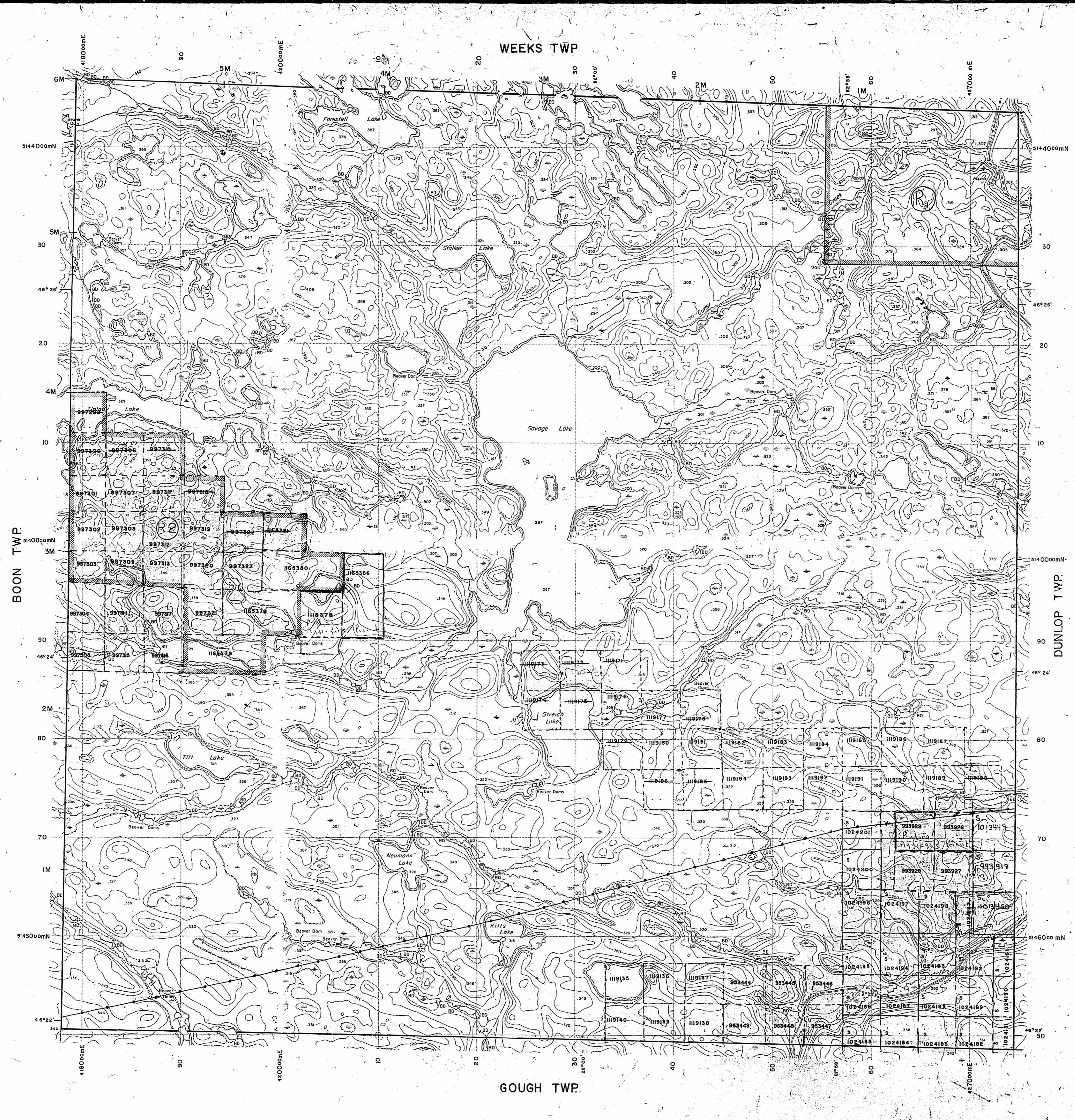
Reviewing App. Permit Dec 9/92

THE INFORMATION THAT APPEARS ON THIS MAP HAS BEEN COMPILED FROM VARIOUS SOURCES, AND ACCURACY IS NOT GUARANTEED. THOSE WISHING TO STAKE MINING CLAIMS SHOULD CONSULT WITH THE MINING RECORDER, MINISTRY OF NORTHERN DEVELOPMENT AND MINES, FOR ADDITIONAL INFORMATION ON THE STATUS OF THE LANDS SHOWN HEREON.

TOWNSHIP  
**SHIBANANING**  
M.N.R. ADMINISTRATIVE DISTRICT  
ESPANOLA  
MINING DIVISION  
SUDBURY  
LAND, TITLES / REGISTRY DIVISION  
SUDBURY

Ministry of Natural Resources  
Land Management Branch  
Ontario

ORIGINAL NOVEMBER 1984  
REVISÉ: G-2866



0-5856

SHIBANANING TWP

0-5856

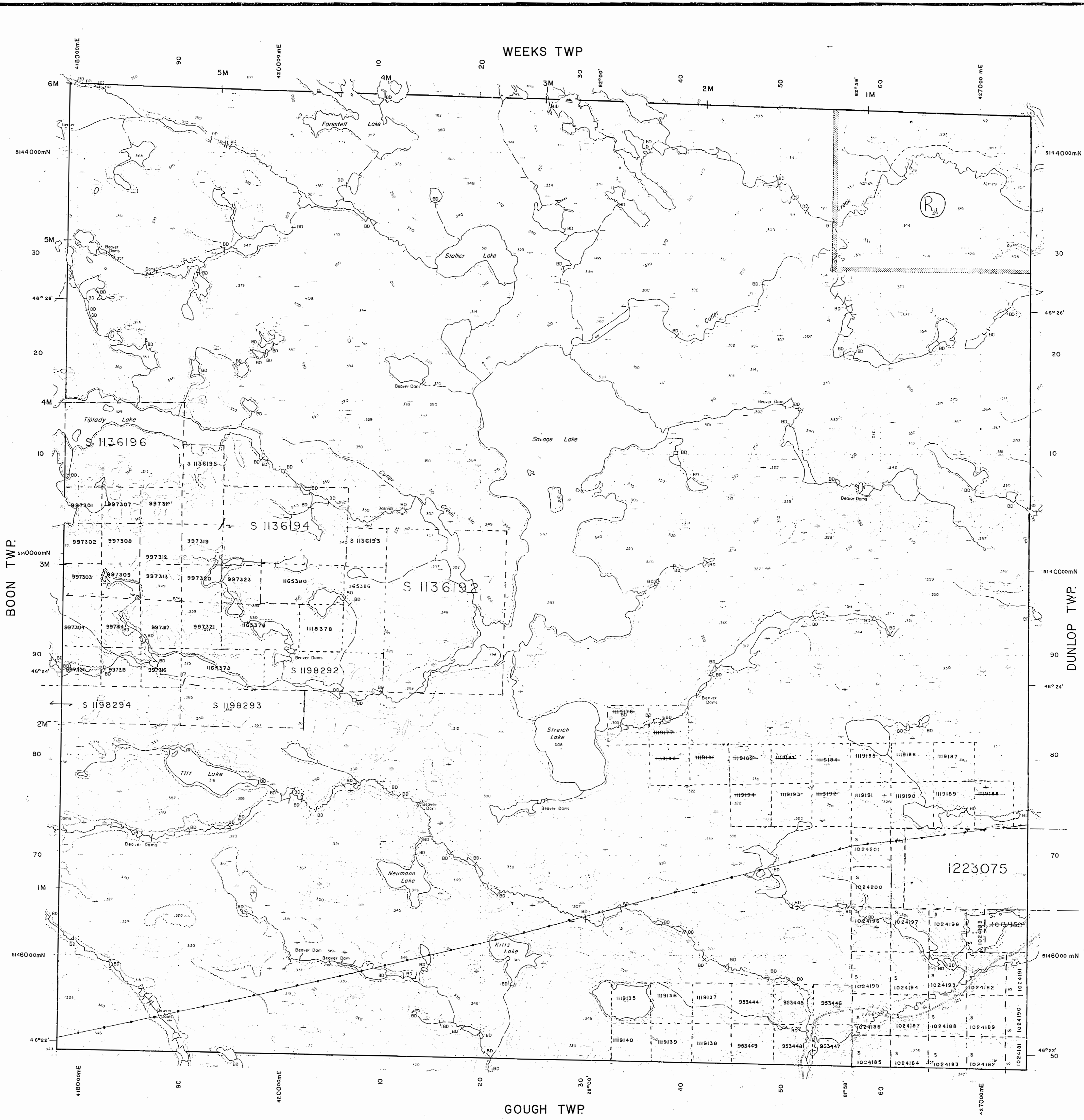
MAP SYMBOLOGY

Aerial Cableway	Pipeline (above ground)
Boundary	Railroad
Interprovincial	Single Track
Interterritorial	Double Track
District, Township	Abandoned
Indian Reserve	Turbidite
Approximate	Road
Lot, Concession	Highway, County
Approximate	Township
Park Boundary	Access (road of doubtful
Bridge	importance or
Road, Railroad	significant driveway)
Building	Trail, Back Road
Chimney	(burial, utility)
Cliff, Pit, Pile	Rapids
Contours	Double line river
Intermittent	with multiple rapids
Approximate	Double line river
Depression	with multiple rapids
Control Points	Reservoir
Horizontal	River, Stream, Canal
Vertical	Approximate
Culvert	Seasonal
Falls	Direction of flow
Double line river	Lock
Fence, Hedge, Wall	Significant
Feature Outline	Pool
(Construction features, etc.)	Spot Elevation
Flooded Land	(spot elevations) 300.0
Lock	Tower
Marsh or Swamp	Transmission Line
Mast	Pole
Mine Head Frame	Pylon
Outcrop	Tunnel
	Utility Poles
	Wharf, Dock, Pier
	Wooded Area

AREAS WITHDRAWN FROM DISPOSITION

M.R.O. - MINING RIGHTS ONLY  
 S.R.O. - SURFACE RIGHTS ONLY  
 M.+S. - MINING AND SURFACE RIGHTS

Description	Order No.	Date	Disposition	File
(R)	W 4/82	12/1/84	S.R.O.	1374-85
(R)	SEC.185(1) O-5-38/94	94/11/01	M & S	195180
(R)	SEC.185(1) W-5-50/93	93/09/02	M & S	195180



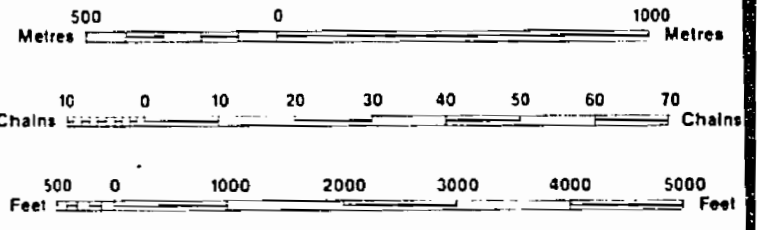
LEGEND

HIGHWAY AND ROUTE No.	
OTHER ROADS	
TRAILS	
SURVEYED LINES:	
TOWNSHIPS, BASE LINES, ETC.	
LOTS, MINING CLAIMS, PARCELS, ETC.	
UNSURVEYED LINES:	
LOT LINES	
PARCEL BOUNDARY	
MINING CLAIMS ETC	
RAILWAY AND RIGHT OF WAY	
UTILITY LINES	
NON PERENNIAL STREAM	
FLOODING OR FLOODING RIGHTS	
SUBDIVISION OR COMPOSITE PLAN	
RESERVATIONS	
ORIGINAL SHORELINE	
MARSH OR MUSKEG	
MINES	
TRAVERSE MONUMENT	

DISPOSITION OF CROWN LANDS

TYPE OF DOCUMENT	SYMBOL
PATENT, SURFACE & MINING RIGHTS	
" SURFACE RIGHTS ONLY	
" MINING RIGHTS ONLY	
LEASE, SURFACE & MINING RIGHTS	
" SURFACE RIGHTS ONLY	
" MINING RIGHTS ONLY	
LICENCE OF OCCUPATION	
ORDER-IN-COUNCIL	
RESERVATION	
CANCELLED	
SAND & GRAVEL	

NOTE: MINING RIGHTS IN PARCELS PATENTED PRIOR TO MAY 6, 1915, VESTED IN ORIGINAL PATENTEE BY THE PUBLIC LANDS ACT, R.S.O. 1970, CHAP. 380, SEC. 63, SUBSEC. 1.

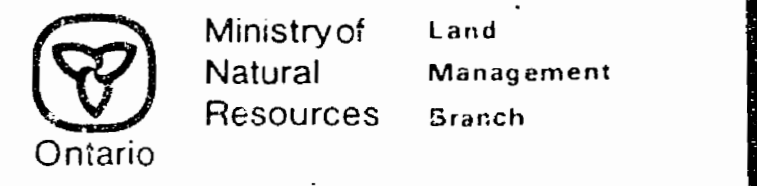


SCALE 1:20 000  
 GRID ZONE: 17

DATE OF ISSUE  
 JUN 22 1989  
 PROVINCIAL RECORDING  
 OFFICE - SUDBURY

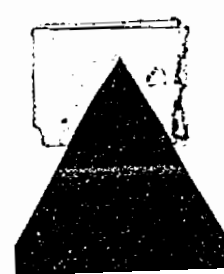
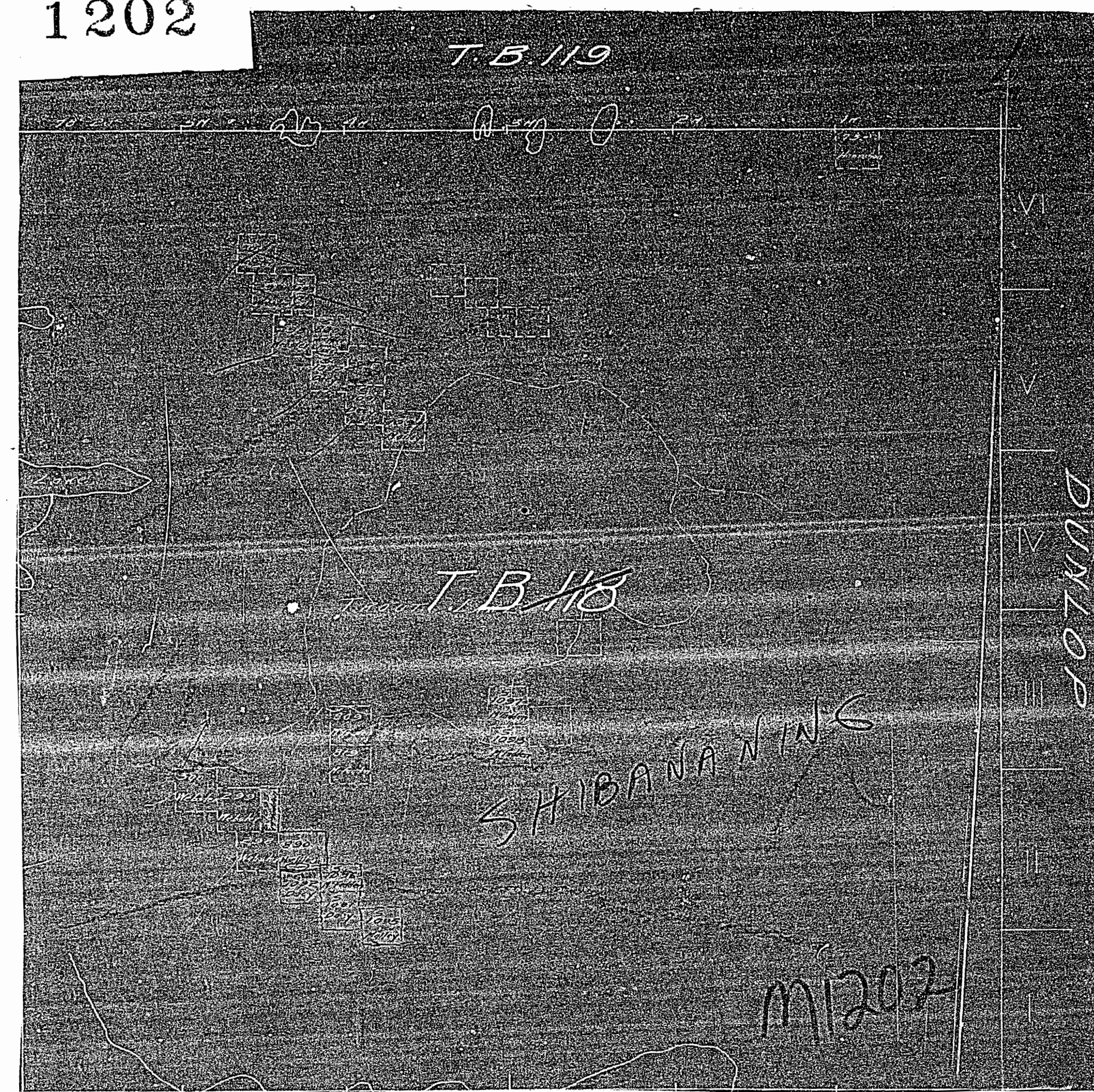
THE INFORMATION THAT APPEARS ON THIS MAP HAS BEEN COMPILED FROM VARIOUS SOURCES, AND ACCURACY IS NOT GUARANTEED. THOSE WISHING TO STAKE MINING CLAIMS SHOULD CONSULT WITH THE MINING RECORDER, MINISTRY OF NORTHERN DEVELOPMENT AND MINES, FOR ADDITIONAL INFORMATION ON THE STATUS OF THE LANDS SHOWN HEREON.

TOWNSHIP  
**SHIBANANING**  
 M.N.R. ADMINISTRATIVE DISTRICT  
 ESPANOLA  
 MINING DIVISION  
 SUDBURY  
 LAND TITLES / REGISTRY DIVISION  
 SUDBURY



ORIGINAL NOVEMBER 1984  
 REVISIONS: Number  
 G-2866

1202



1202

M1202

T.B. 119

6

5

4

3

2

S.R.O. WITHDRAWN IN  
NORTHEAST QUARTER OF  
SHIBANANING TOWNSHIP  
(SEE LAND ROLL AUGUST 19, 1972)

SUDBURY  
MINING DIV.  
**RECEIVED**  
JUL 8 1971  
A.M. P.M.  
7,8,9,10,11,12,1,2,3,4,5,6

DUNLOP

SAVAGE LAKE

T.B. 118

~~S.R.O. WITHDRAWN IN  
ALL OF SHIBANANING  
TOWNSHIP  
(SEE LAND ROLL  
AUGUST 5, 1971)~~

BLANKET QUARRY  
PERMIT # 7289  
COVERS PART  
OF SHIBANANING  
TWP.

*All title reservations on surface by Dept. of L. & F.  
shown hereon thru*

GOUGH

Sand & Gravel on all unpatented mining claims  
in this Township reserved to the Crown.

SHIBANANING M1202  
formerly TWP 118 TWP 118

2

1

12

11

10

9

8

7

6

5

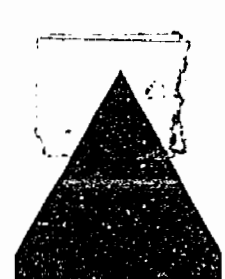
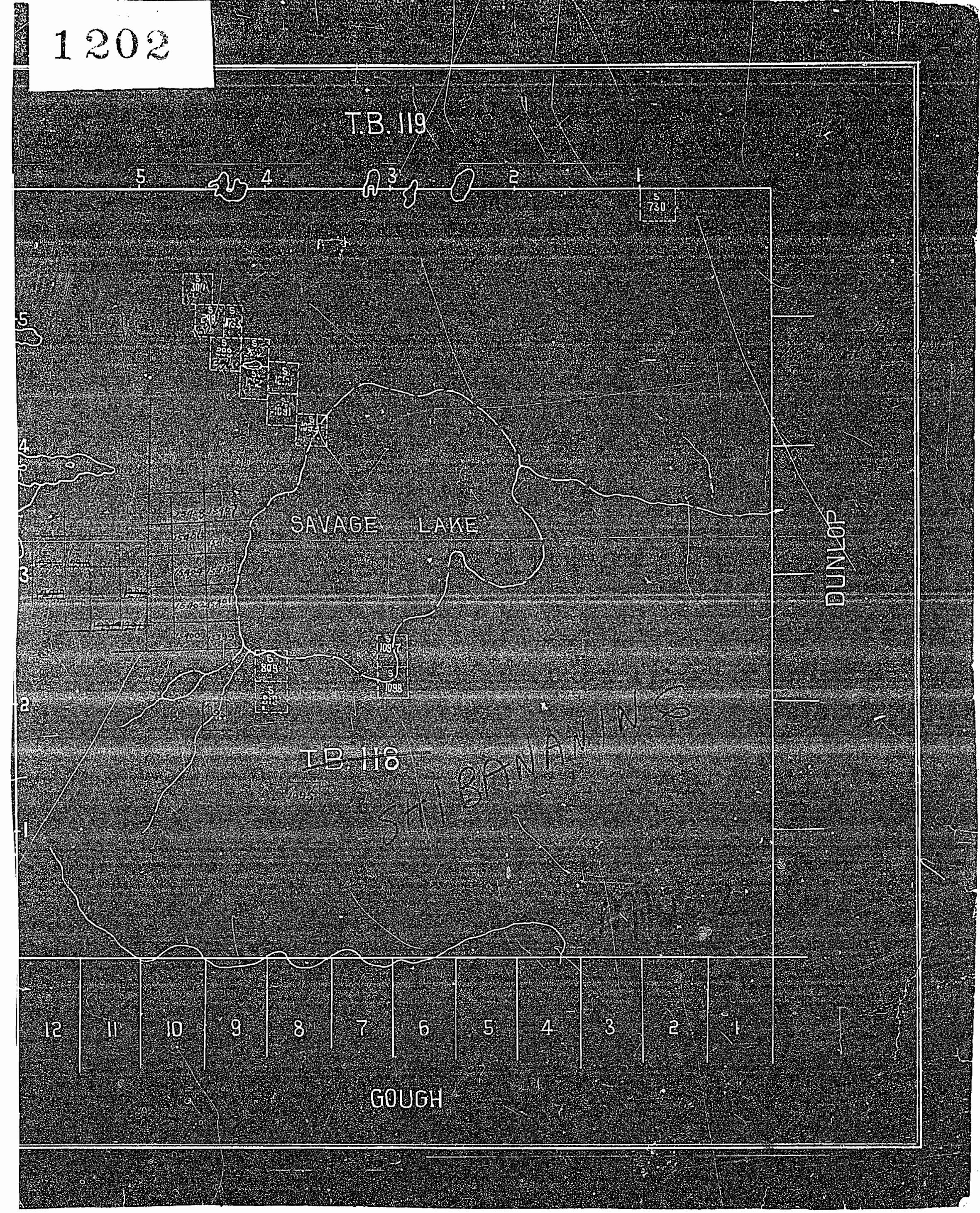
4

3

2

1

1202

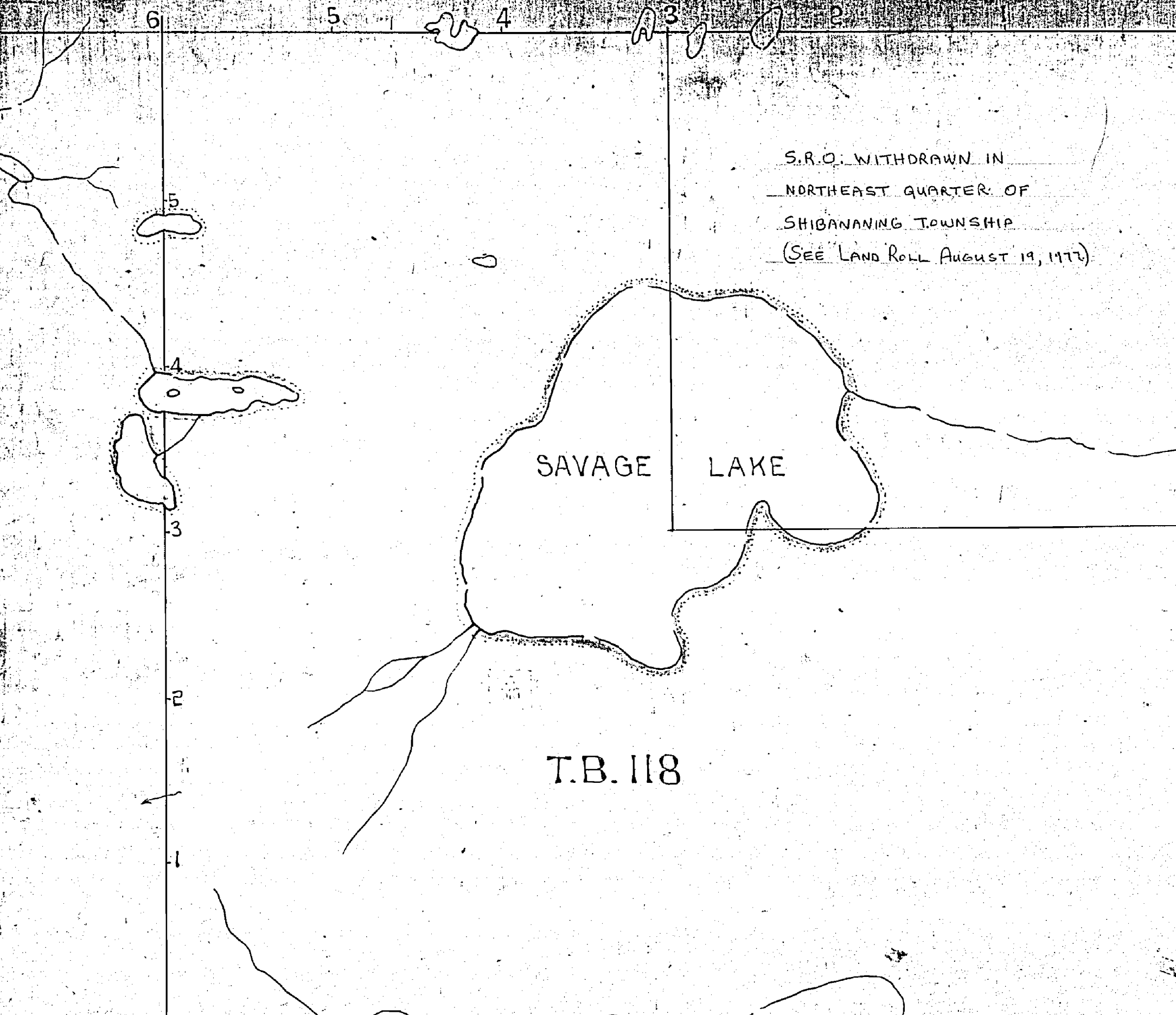




1202

M1202

T.B. 110



SUBBURY  
MINING DIV.  
**RECEIVED**  
JUL 8 1971  
A.M. P.M.  
7 8 9 10 11 12 1 2 3 4 5 6

SAVAGE LAKE

DUNLOP

T.B. 118

~~S.R.O. WITHDRAWN IN  
N.E. QUARTER OF SHIBANANING  
TOWNSHIP  
(SEE LAND ROLL  
AUGUST 5, 1971)~~

BLANKET QUARRY  
PERMIT # 7289  
COVERS PART  
OF SHIBANANING  
TWP.

All wide reservations on surface by Dept. of L. & F.  
shown herein this ~~is~~

GOUGH

SHIBANANING

M1202

Sand & Gravel on all unpatented mining claims  
in this Township reserved to the Crown.

formerly

TWP 118

TWP 118

Area withdrawn from staking under Section  
of the Mining Act (R.S.O. 1970)

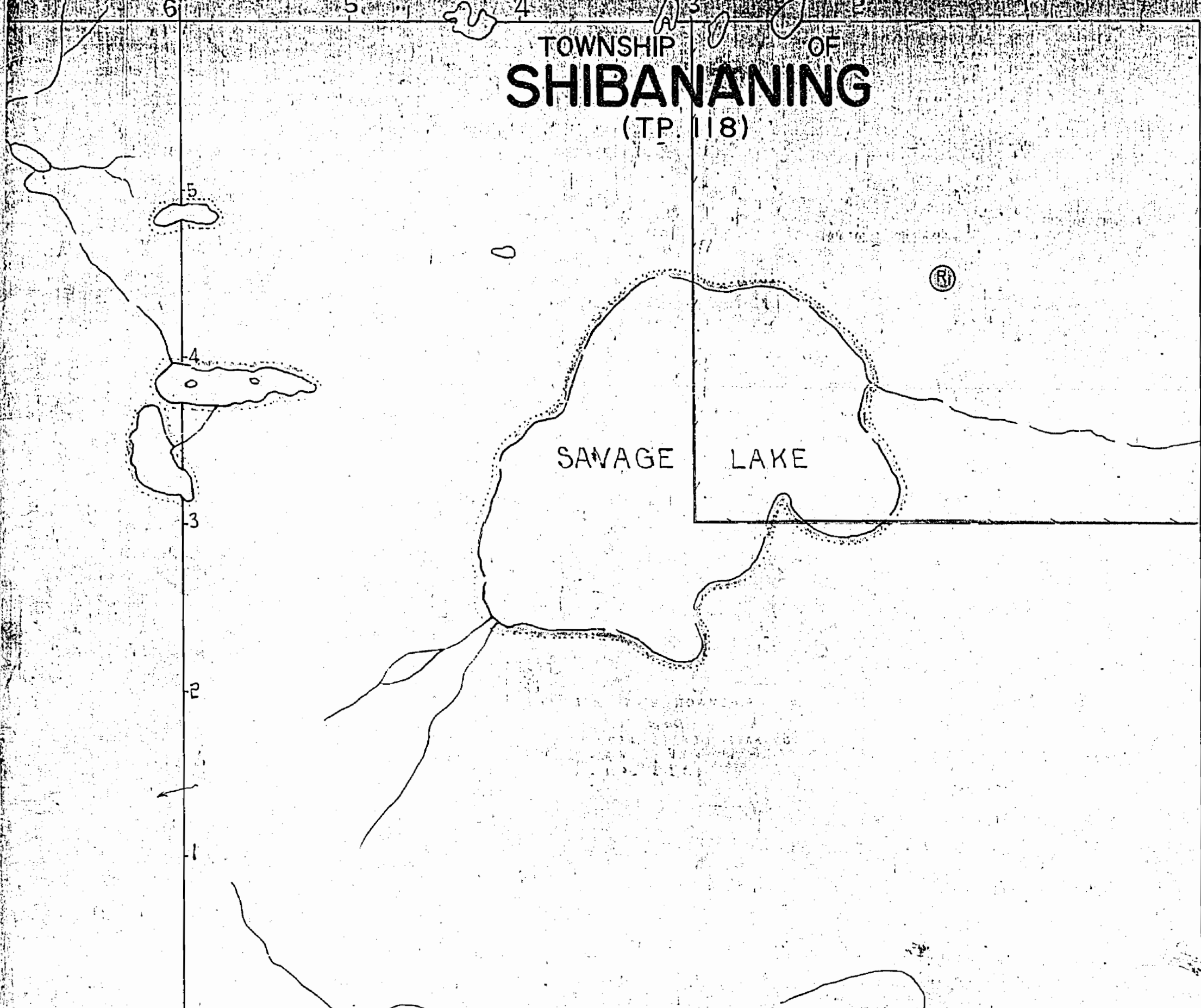
Order No.	File No.	Date	Disposition
1	137685	10/8/77	S.R.D.
2	140/78	10/22/78	S.R.D.

WEEKS TP. M.1203

ONTARIO  
MINISTRY OF NATURAL RESOURCES  
SURVEYS AND MAPPING BRANCH

DATE OF ISSUE  
AUG 31 1977

# TOWNSHIP OF SHIBANANING (TP. 118)



DUNLOP TP. M.771

BLANKET QUARRY  
PERMIT # 9051  
COVERS PART  
OF SHIBANANING  
TWP.

400' wide reservations on surface by Dept. of L. & F.  
shown hereon that

Sand & Gravel on all unpatented mining claims  
in this Township reserved to the Crown.

SHIBANANING  
GOUGH TP. M.890