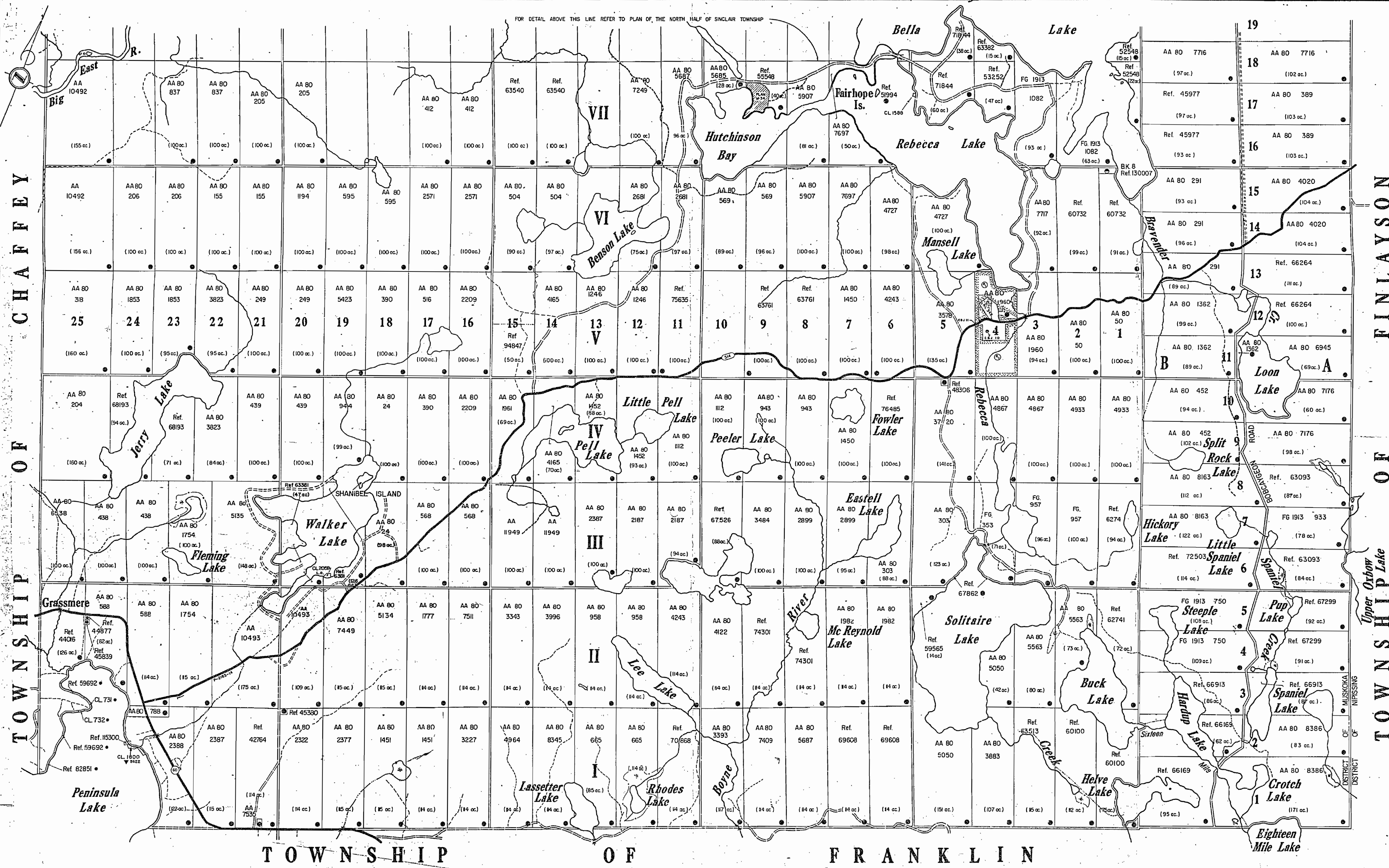


REFERENCES

AREAS WITHDRAWN FROM DISPOSITION				
M.R.O. - MINING RIGHTS ONLY				
S.R.O. - SURFACE RIGHTS ONLY				
M. & S. - MINING AND SURFACE RIGHTS				
Description	Order No.	Date	Disposition	File
SEC. 36/80	W.15/88	7/2/88	S.R.O.	108549



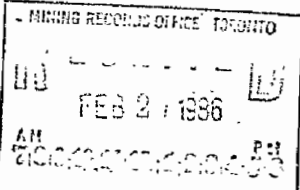
LEGEND

HIGHWAY AND ROUTE No.	
SECONDARY ROADS	
OTHER ROADS, TRAILS	
SURVEYED LINES	
TOWNSHIP, BASE LINES, ETC.	
LOTS, MINING CLAIMS, PARCELS, ETC.	
UNSURVEYED LINES	
LOT LINES	
PARCEL BOUNDARY	
MINING CLAIMS ETC.	
RAILWAY AND RIGHT OF WAY	
UTILITY LINES	
NON-PERENNIAL STREAM	
FLOODING OR FLOODING RIGHTS	
SUBDIVISION OR COMPOSITE PLAN	
RESERVATIONS	
ORIGINAL SHORELINE	
MARSH OR MUSKEG	
MINES	
TRAVERSE MONUMENT	
PORTAGES	

DISPOSITION OF CROWN LANDS

TYPE OF DOCUMENT	SYMBOL
PATENT, SURFACE & MINING RIGHTS	
SURFACE RIGHTS ONLY	
MINING RIGHTS ONLY	
LEASE, SURFACE & MINING RIGHTS	
SURFACE RIGHTS ONLY	
MINING RIGHTS ONLY	
LICENCE OF OCCUPATION	
ORDER-IN-COUNCIL	
RESERVATION	
CANCELLED	
SAND & GRAVEL	

NOTE: MINING RIGHTS IN PARCELS PATENTED PRIOR TO MAY 1, 1915, VESTED IN ORIGINAL PATENTEE BY THE PUBLIC LANDS ACT, R.S.O. 1910, CHAP. 380, SEC. 63, SUBSEC. 1.



TOWNSHIP SINCLAIR
(SOUTH PART)
M.N.R. ADMINISTRATIVE DISTRICT
BRACEBRIDGE
MINING DIVISION
SOUTHERN ONTARIO
LAND TITLES / REGISTRY DIVISION
MUSKOKA RESIDENT GEOLOGIST
DORSET

Ministry of Natural Resources
Ontario

Date DEC. 1985

Number
G-2458

REFERENCES

AREAS WITHDRAWN FROM DISPOSITION

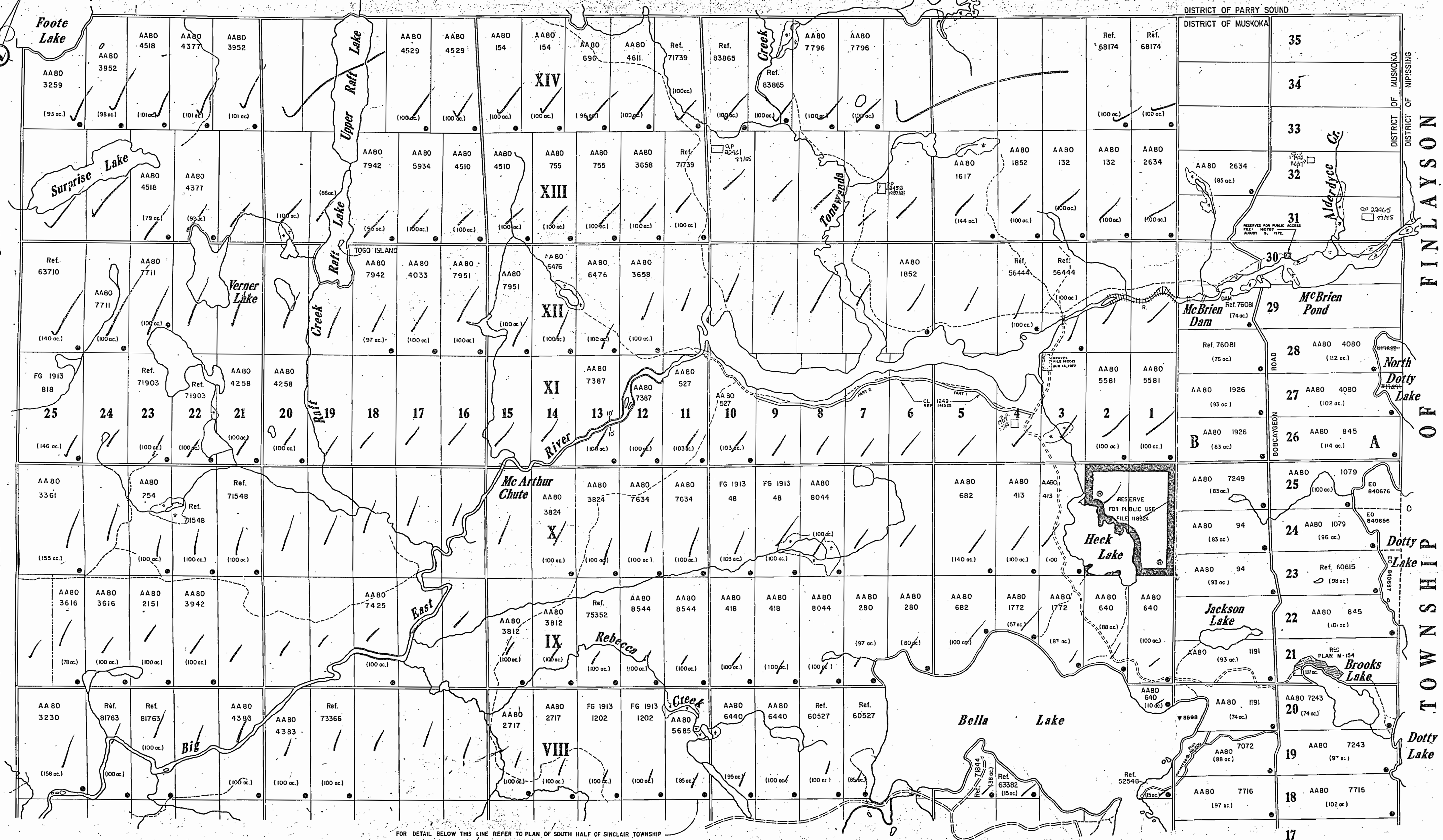
M.R.O. - MINING RIGHTS ONLY
S.R.O. - SURFACE RIGHTS ONLY
M.F.S. - MINING AND SURFACE RIGHTS

Description	Order No.	Date	Disposition	File

TOWNSHIP

OF

BETHUNE

CHAFFEY
OF
TOWNSHIP

FOR DETAIL BELOW THIS LINE REFER TO PLAN OF SOUTH HALF OF SINCLAIR TOWNSHIP

MINING RECORDS OFFICE - TORONTO
FEB 27 1986
AN
72000011-15-000000

LEGEND

PROVINCIAL BOUNDARY
COUNTY AND DISTRICT BOUNDARY
TOWNSHIP BOUNDARY SURVEYED
TOWNSHIP BOUNDARY PROJECTED
SURVEYED LINES LAND
SURVEYED LINES WATER
BLIND LINES
UNSURVEYED PARCEL BOUNDARY
HIGHWAY AND ROUTE No.
MAIN ROAD
OTHER ROADS
TRAIL OR PATH
ELECTRIC TRANSMISSION LINE
TELEPHONE LINE
PIPE LINE
RAILWAY AND RIGHT-OF-WAY
RESERVATION
SUBDIVISION OR COMPOSITE PLAN
BRIDGE
DAM, RAPIDS, FALLS, PORTAGE
NON-PERENNIAL STREAM
FLOODING
TRAVERSE POST
PORTAGES

DISPOSITION OF CROWN LANDS

TYPE OF DOCUMENT

PATENT, SURFACE & MINING RIGHTS
" SURFACE RIGHTS ONLY
" MINING RIGHTS ONLY
LEASE, SURFACE & MINING RIGHTS
" SURFACE RIGHTS ONLY
" MINING RIGHTS ONLY
LICENCE OF OCCUPATION
ORDER-IN-COUNCIL
RESERVATION
CANCELLED
SAND & GRAVEL

SYMBOL

NOTE: MINING RIGHTS IN PARCELS PATENTED PRIOR TO MAY 6, 1912, VESTED IN ORIGINAL PATENTEE BY THE PUBLIC LANDS ACT, R.S.O. 1912, CHAP. 380, SEC. 82, SUBSEC. 1.

TOWNSHIP
SINCLAIR (NORTH PART)

M.N.R. ADMINISTRATIVE DISTRICT
BRACEBRIDGE
MINING DIVISION

SOUTHERN ONTARIO
LAND TITLES / REGISTRY DIVISION
MUSKOKA RESIDENT GEOLOGIST
DORSET

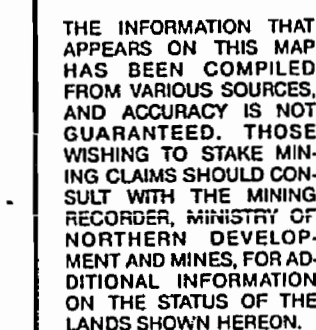
Ministry of
Natural Resources
Land Management
Branch

Date DEC. 1985

Number
G-2457

TOWNSHIP OF CHAFFEY

① QUARRY PERMIT



SCALE: 1 INCH = 20 CHAINS

LEGEND

PROVINCIAL BOUNDARY
COUNTY AND DISTRICT BOUNDARY
TOWNSHIP BOUNDARY SURVEYED
TOWNSHIP BOUNDARY PROJECTED
SURVEYED LINES LAND
SURVEYED LINES WATER
BLIND LINES
UNSURVEYED PARCEL BOUNDARY
HIGHWAY AND ROUTE No.
MAIN ROAD
OTHER ROADS
TRAIL OR PATH
ELECTRIC TRANSMISSION LINE
TELEPHONE LINE
PIPE LINE
RAILWAY AND RIGHT-OF-WAY
RESERVATION
SUBDIVISION OR COMPOSITE PLAN
BRIDGE
DAM, RAPIDS, FALLS, PORTAGE
NON - PERENNIAL STREAM
FLOODING
TRAVERSE POST

DISPOSITION OF CROWN LANDS

TYPE OF DOCUMENT	SYMBOL
PATENT, SURFACE & MINING RIGHTS	C
" SURFACE RIGHTS ONLY	C
" MINING RIGHTS ONLY	C
LEASE, SURFACE & MINING RIGHTS	L
" SURFACE RIGHTS ONLY	L
" MINING RIGHTS ONLY	L
LICENCE OF OCCUPATION	O
ORDER-IN-COUNCIL	O
RESERVATION	R
CANCELLED	C
SAND & GRAVEL	C

NOTE: MINING RIGHTS IN PARCELS PATENTED PRIOR TO MAY 1, 1913, VESTED IN ORIGINAL PATENTEE BY THE PUBLIC LANDS ACT, P.L. 86-3, CHAP. 380, SEC. 63, SUBSEC.

TOWNSHIP
SINCLAIR (NORTH PART)
M.N.R. ADMINISTRATIVE DISTRICT
BRACEBRIDGE
MINING DIVISION
SOUTHERN ONTARIO
LAND TITLES / REGISTRY DIVISION
MUSKOKA

Ministry of Land
Natural Management
Resources Branch

Date DEC 19

Number	G-2457
--------	--------

RES. GEOL. SUDBURY
M.N.R. DIST. BRACEBRIDGE